

# **AT-LP2D-USB**

Detailed Software Installation Guide

For Cakewalk pyro Audio Creator™

On the Windows Vista Operating system

# Contents

A note about the installation .....	3
Installing Cakewalk pyro Audio Creator .....	4
Registering the software for full use .....	26
Configuring your computer and the software .....	37

This guide will help you install, register and configure Cakewalk Pyro Audio Creator . The guide will take you step-by-step , screen -by-screen through the process.

Make sure you follow the guide and do exactly what it tells you one page at a time.

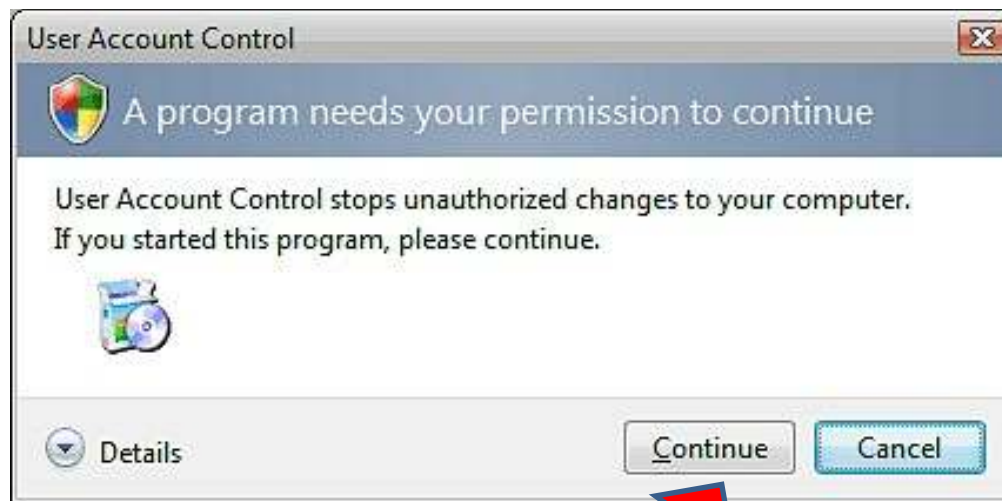
**Important note** –This guide assumes that your CD drive is set to automatically start the installation when the CD is inserted. If your CD is not set to automatically start the installation, close any windows that open and proceed to page 6 and begin with that step.

Good luck and enjoy your AT-LP2D-USB system!

## Cakewalk Audio Creator LE Installation on a Vista Operating System

Insert the Cakewalk Pyro Audio Creator LE Disk into your CD Drive.

If the AutoRun feature is turned on for your CD Drive you should see a window similar to the following :



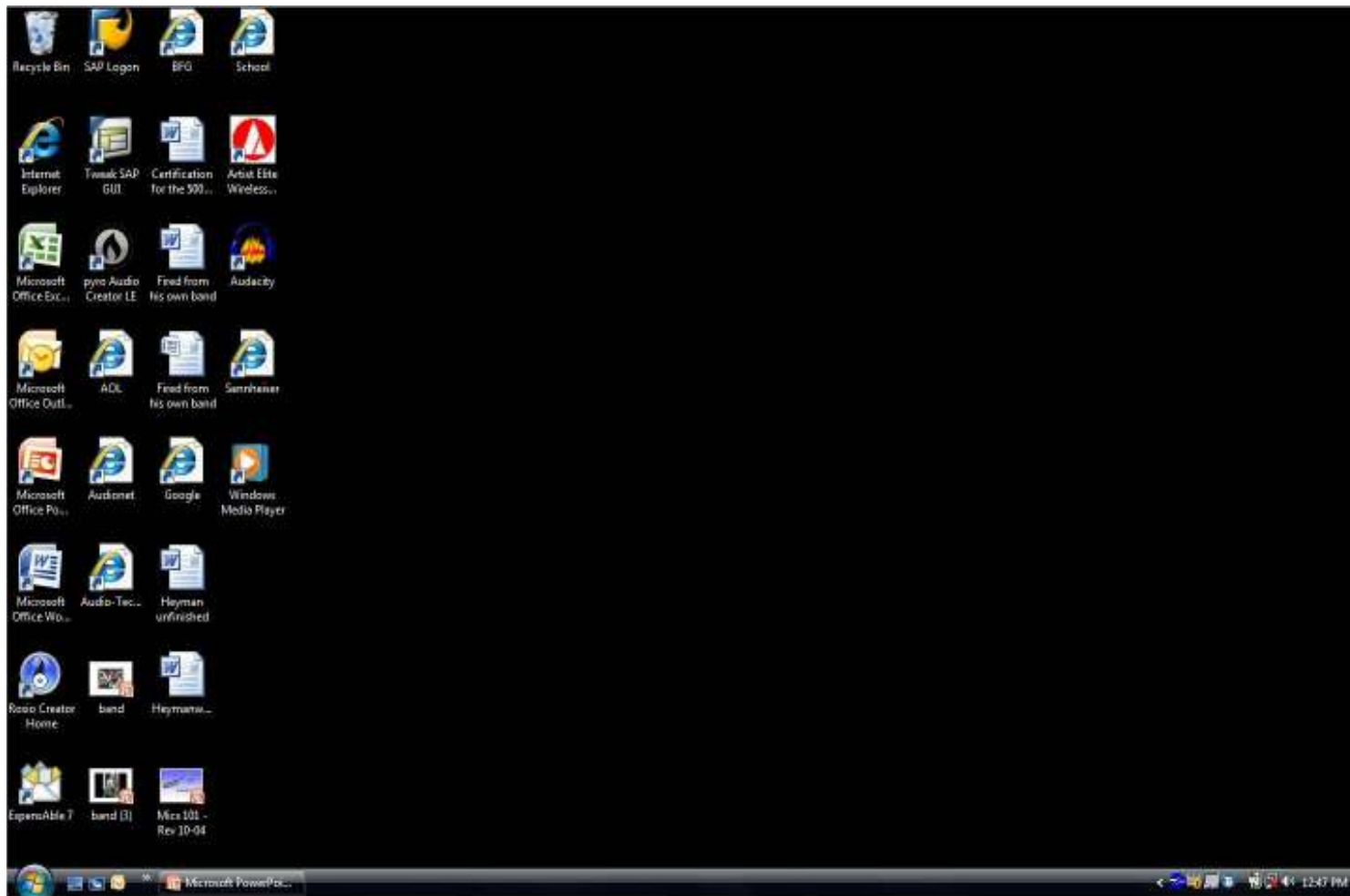
Select the Continue button.

You should see a window similar to the following :



Select the Cancel button.

You will then be at your main computer screen



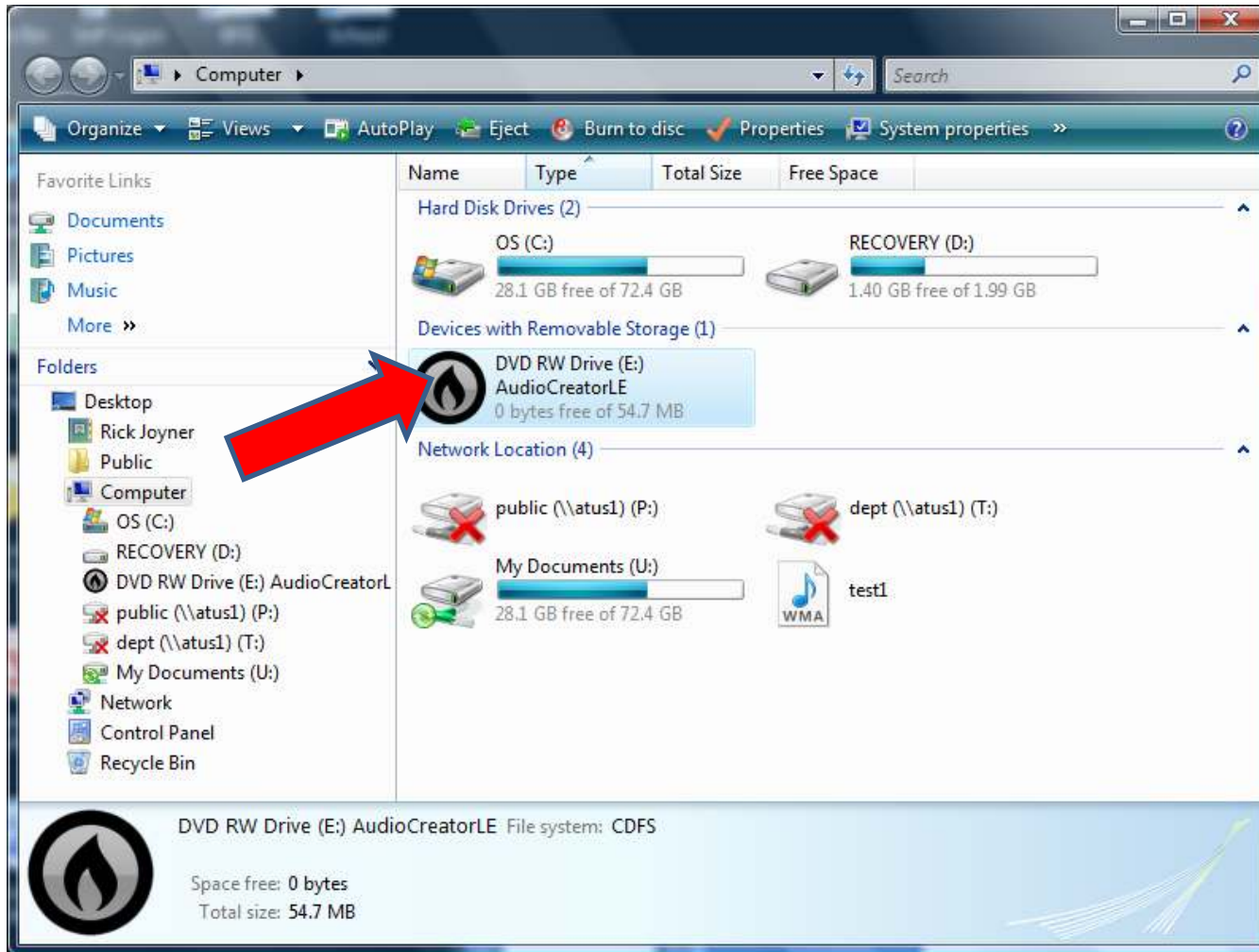
Select the Start button

You should see a window similar to the following :



Select the Computer button.

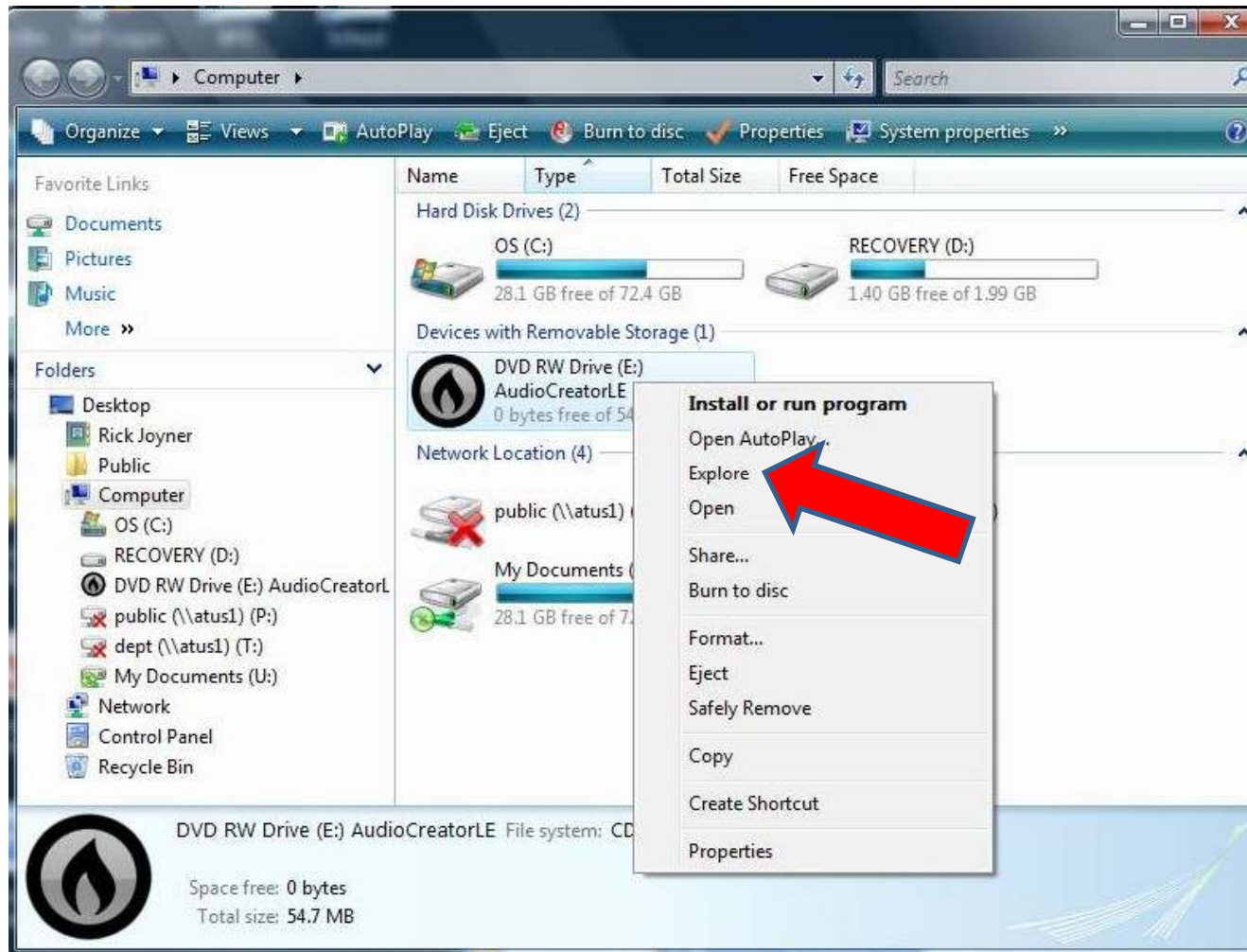
You should see a window similar to the following :



**Right click** with your mouse the CD drive. (It should say AudioCreator LE)

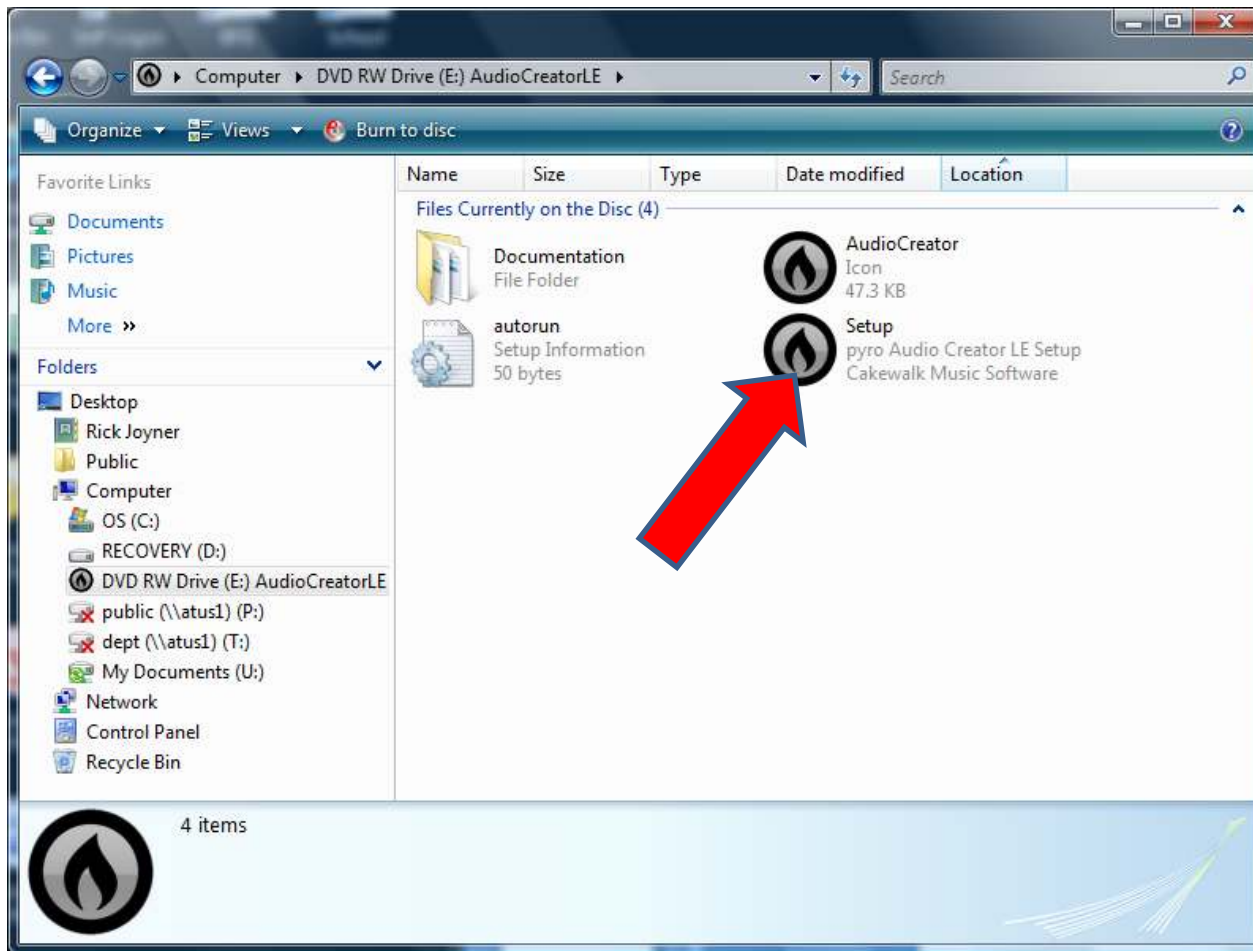


You should see a window similar to the following :



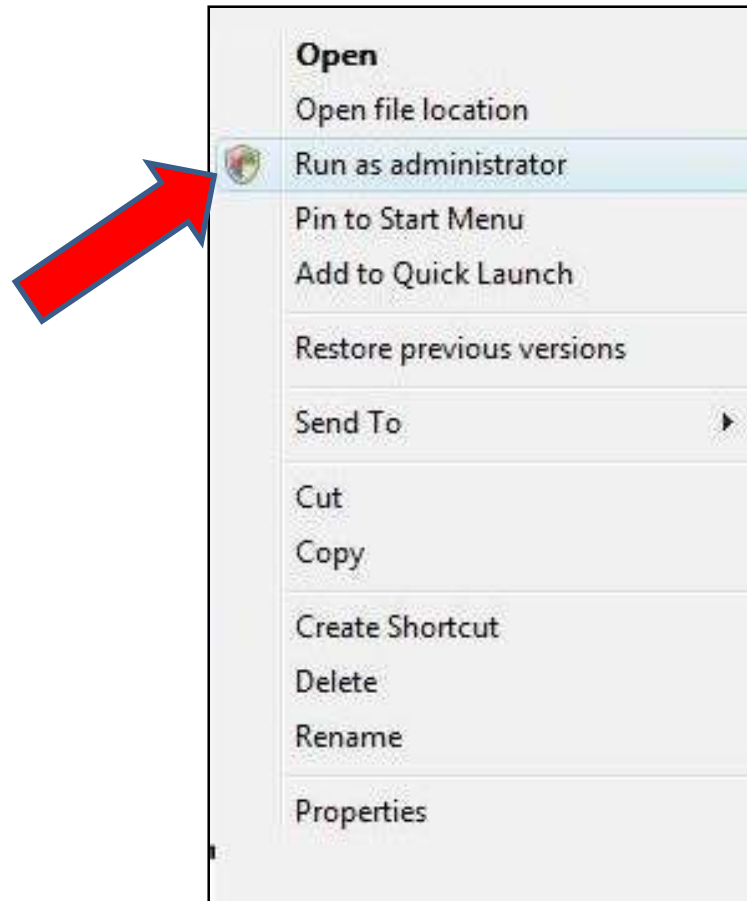
Select Explore.

You should see a window similar to the following :



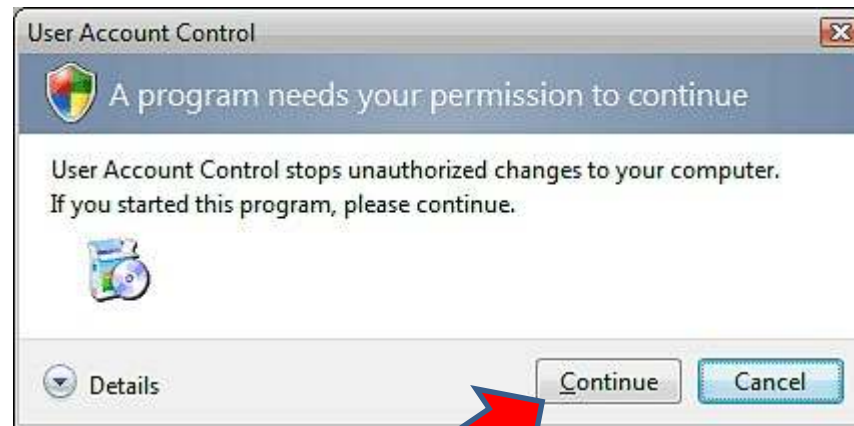
**Right Click** with your mouse the Setup program.

You should see a window similar to the following :



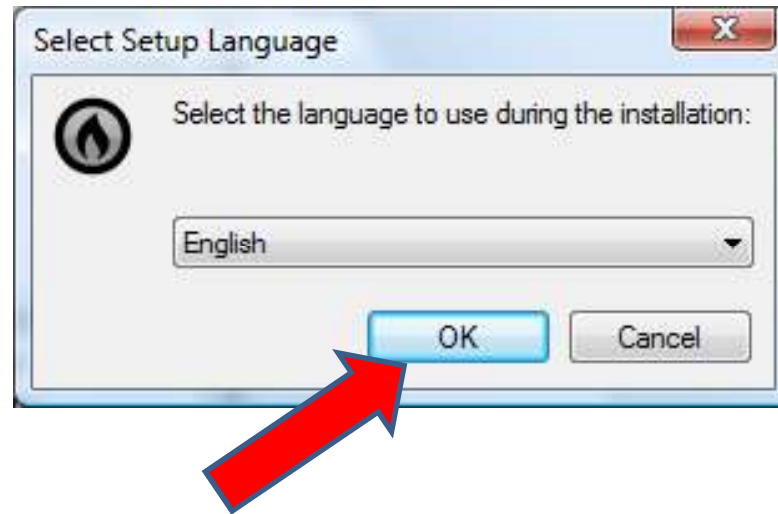
Select “Run as administrator”

You should see a window similar to the following :



Select the "Continue" button.

You should see a window similar to the following :



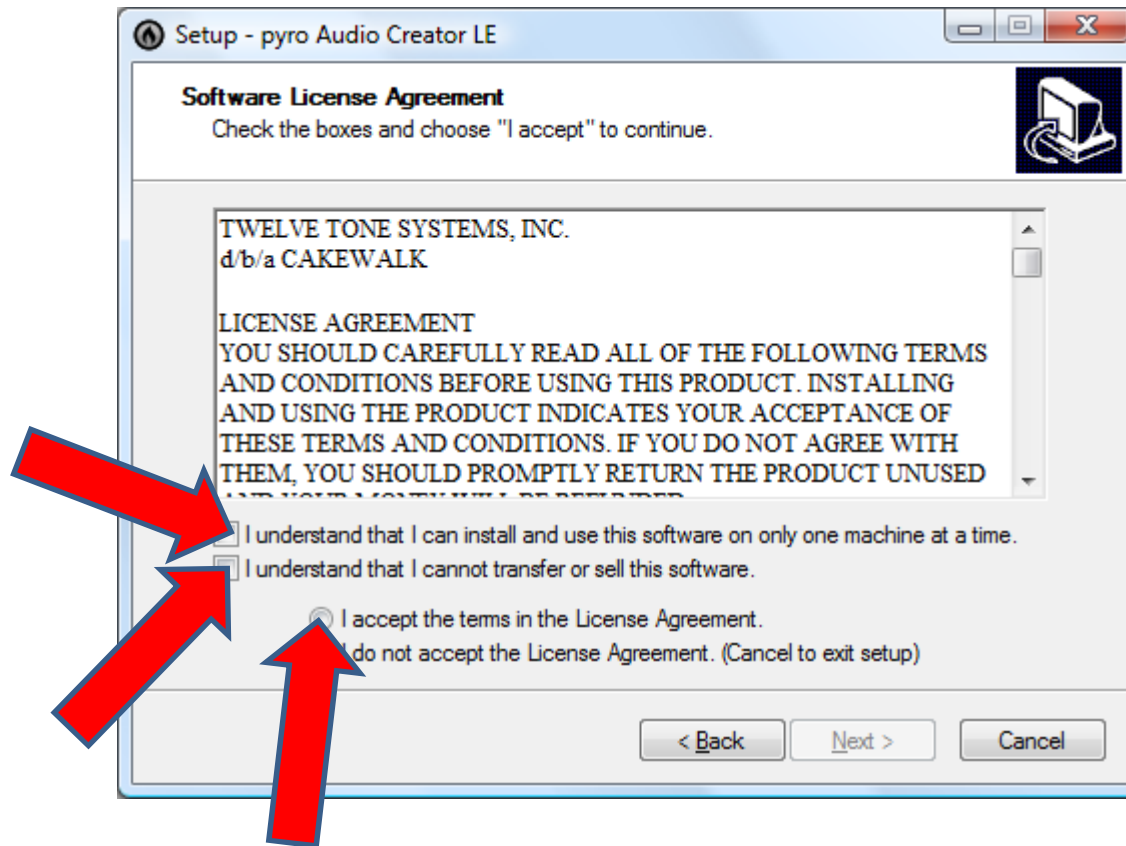
Select the "OK" button.

You should see a window similar to the following :



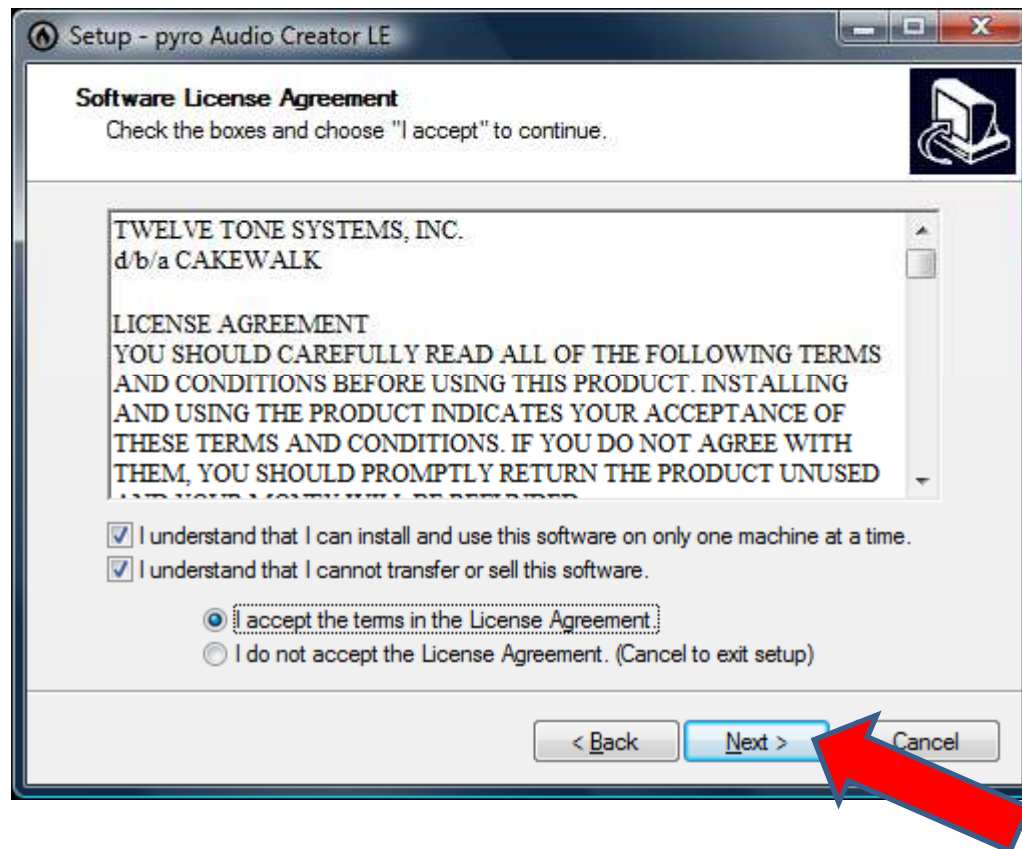
Select the "Next" button.

You should see a window similar to the following :



Select all three of the above noted boxes to place a check mark and accept the conditions.

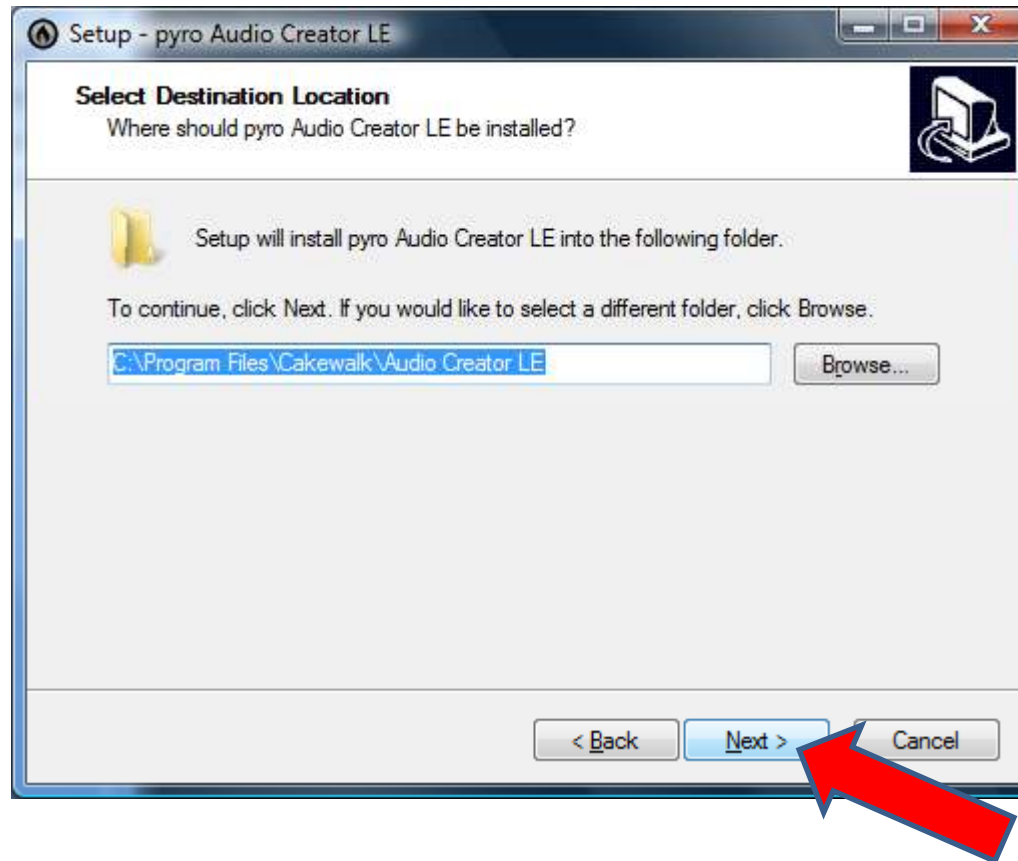
Notice after placing the check marks that the next button is now available for selection.



Select the “Next” button.

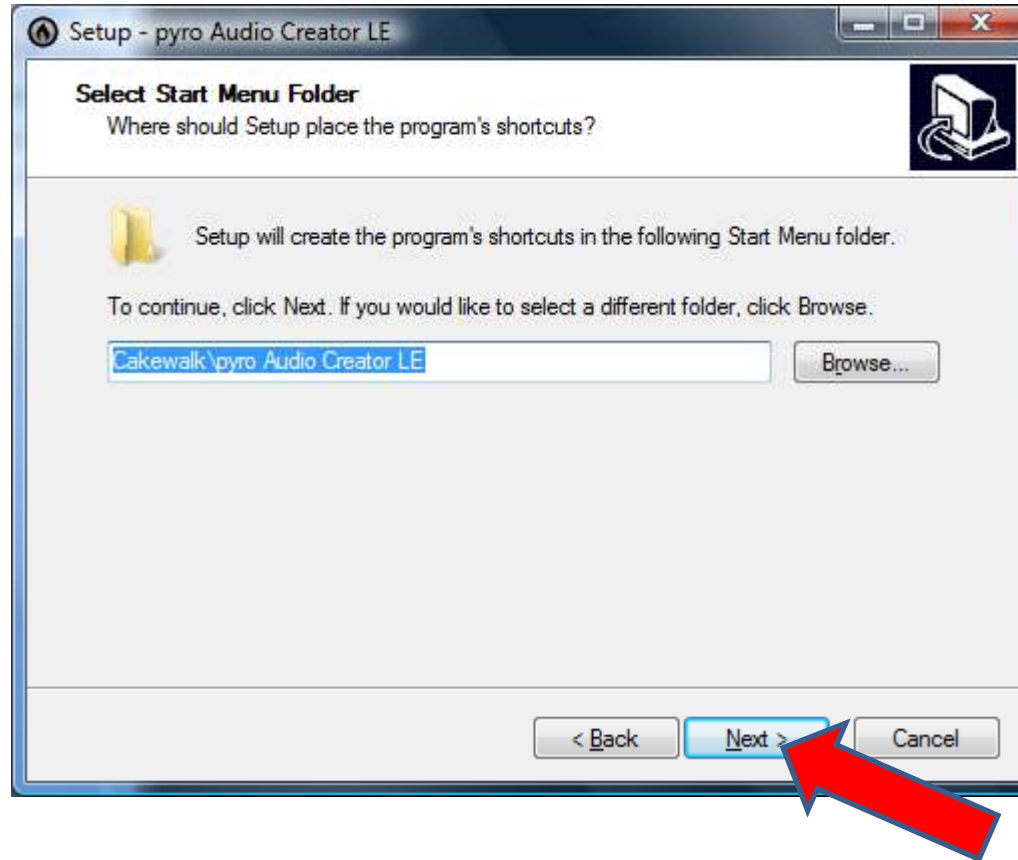


You should see a window similar to the following :



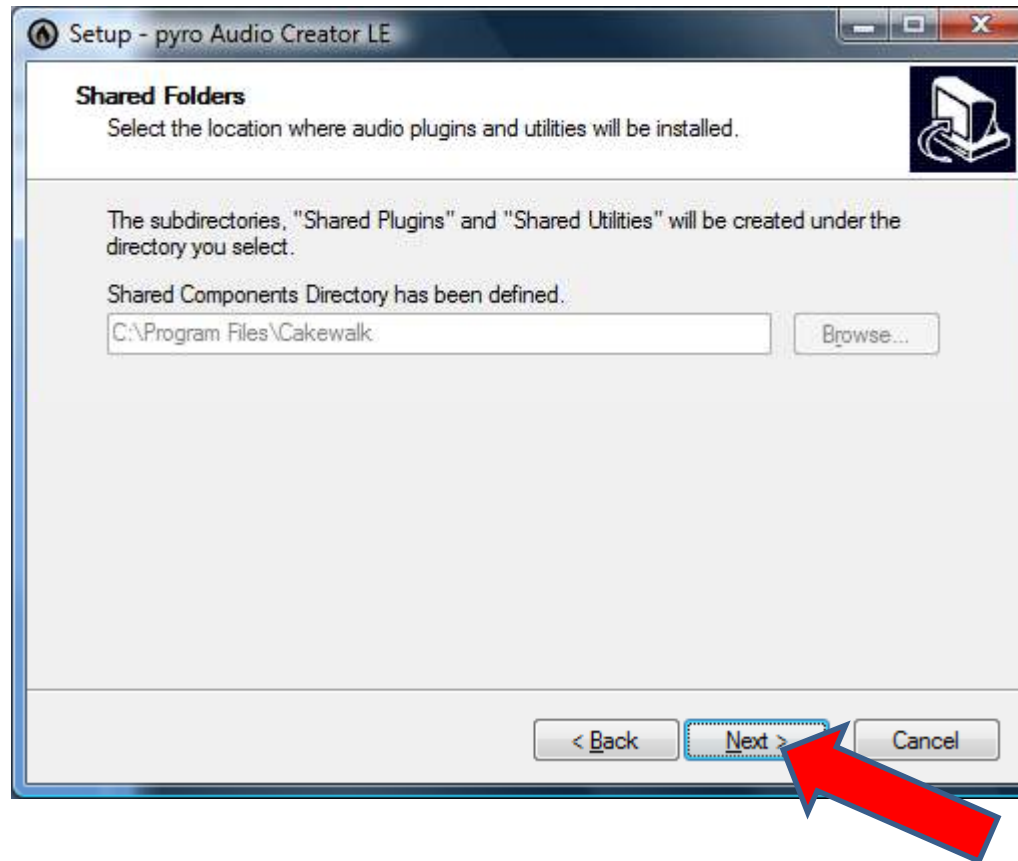
Then select the "Next" button.

You should see a window similar to the following :



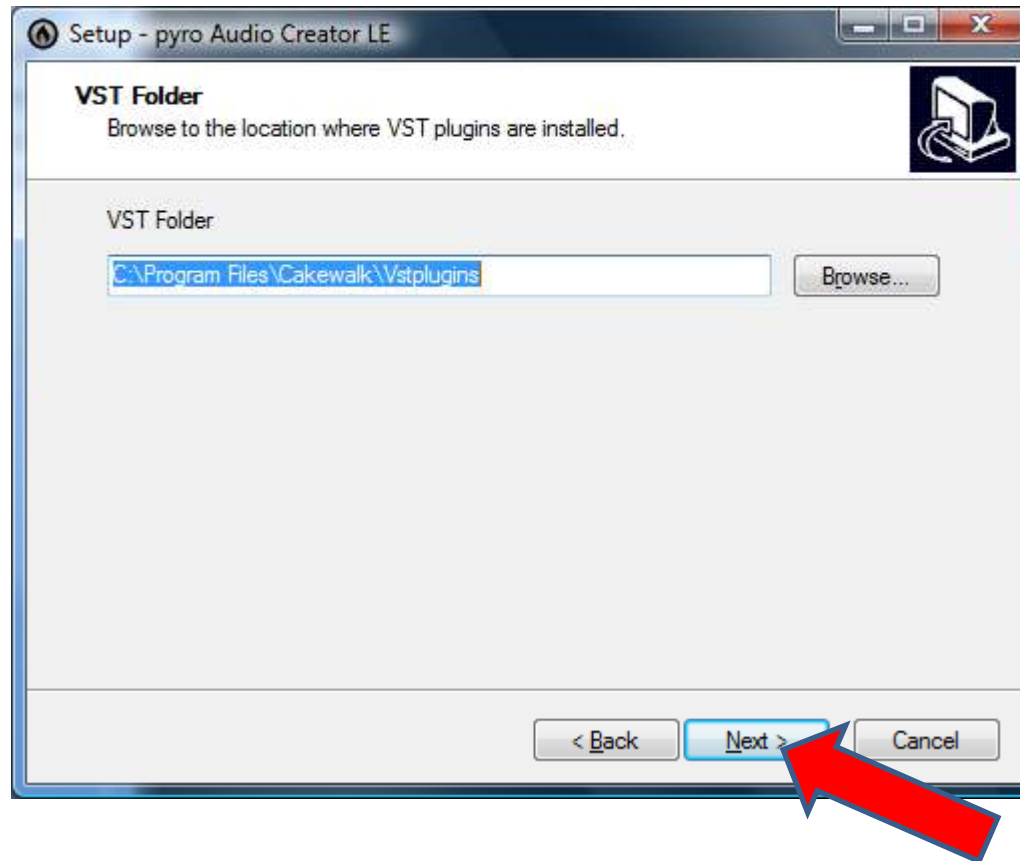
Then select the "Next" button.

You should see a window similar to the following :



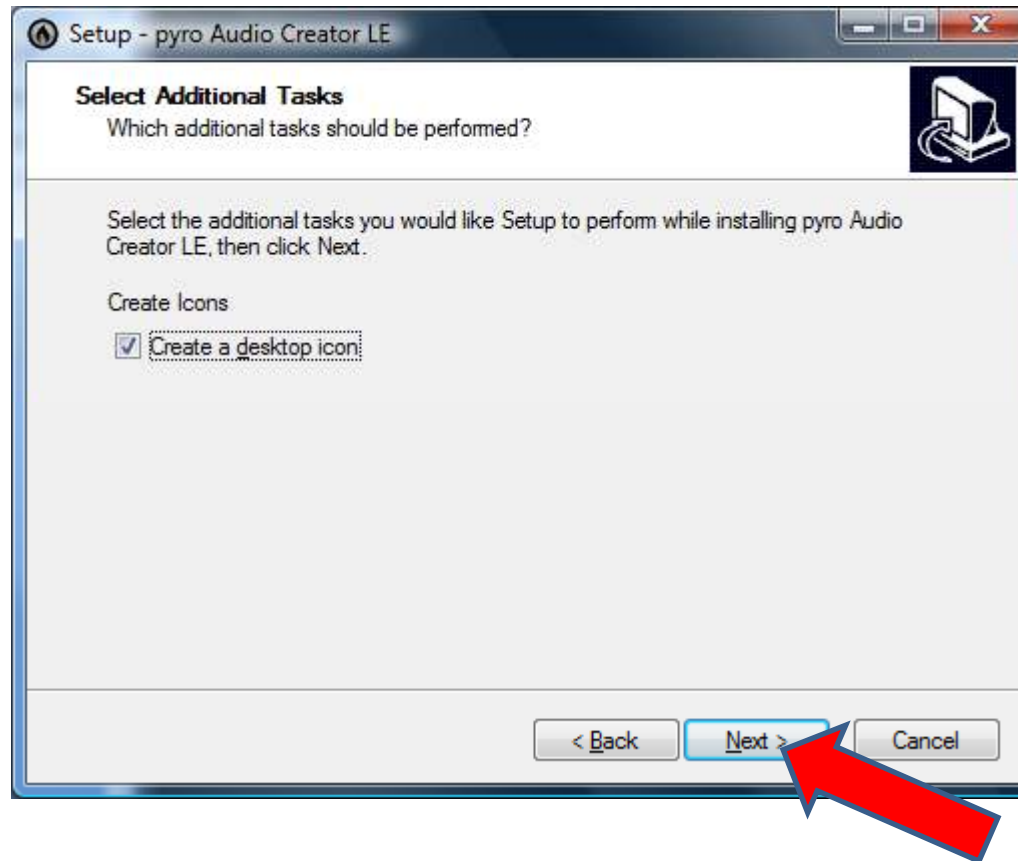
Then select the "Next" button.

You should see a window similar to the following :



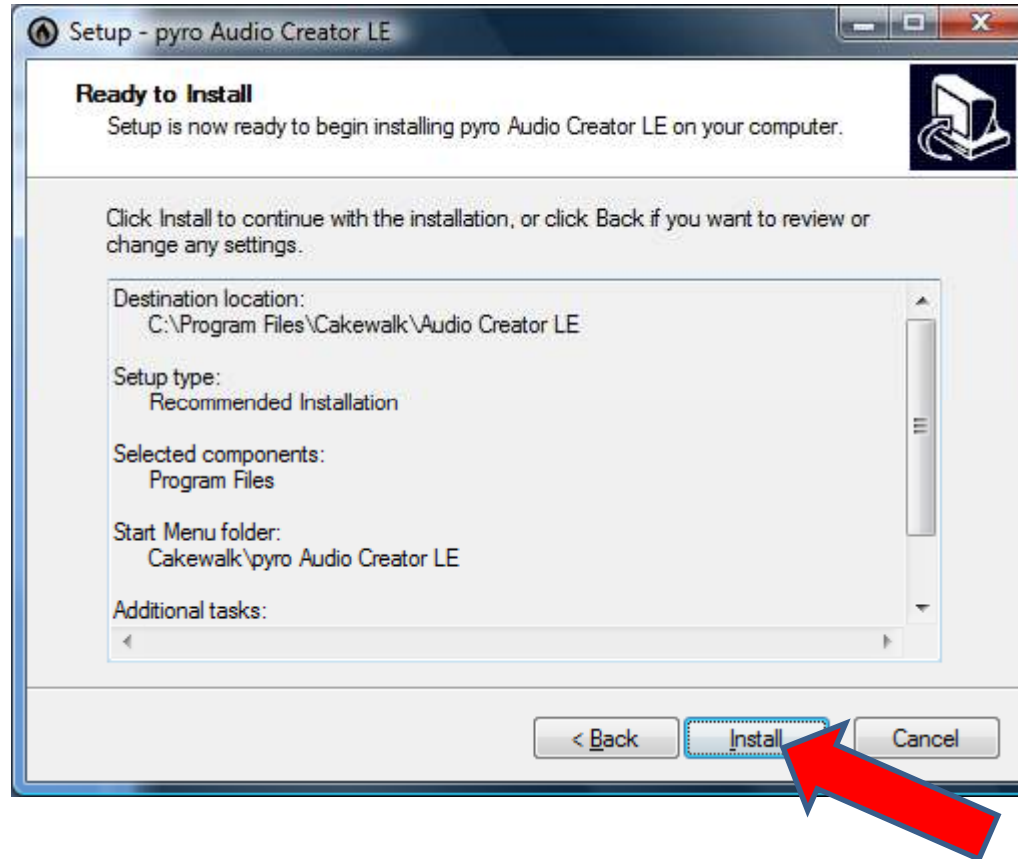
Then select the "Next" button.

You should see a window similar to the following :



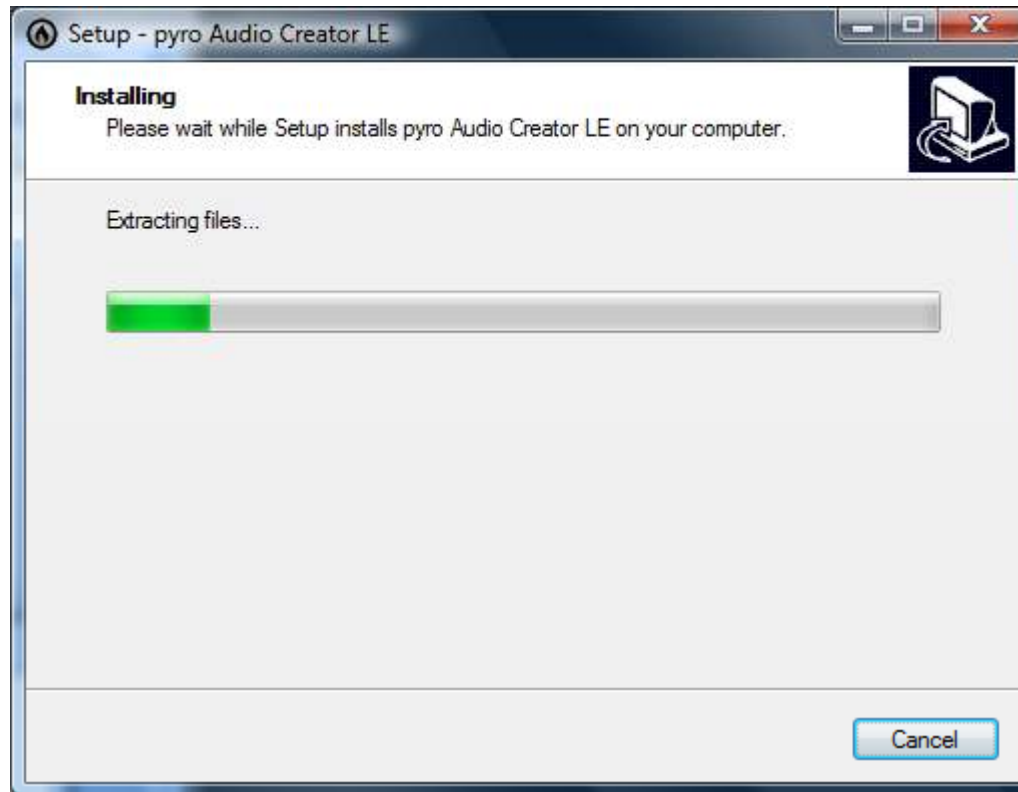
Then select the “Next” button.

You should see a window similar to the following :



Then select the “Install” button.

You should see a window similar to the following :



You will see progress as the program is extracted and installed  
Wait for the installation to complete. This could take several minutes.

You should see a window similar to the following :



Deselect both check boxes



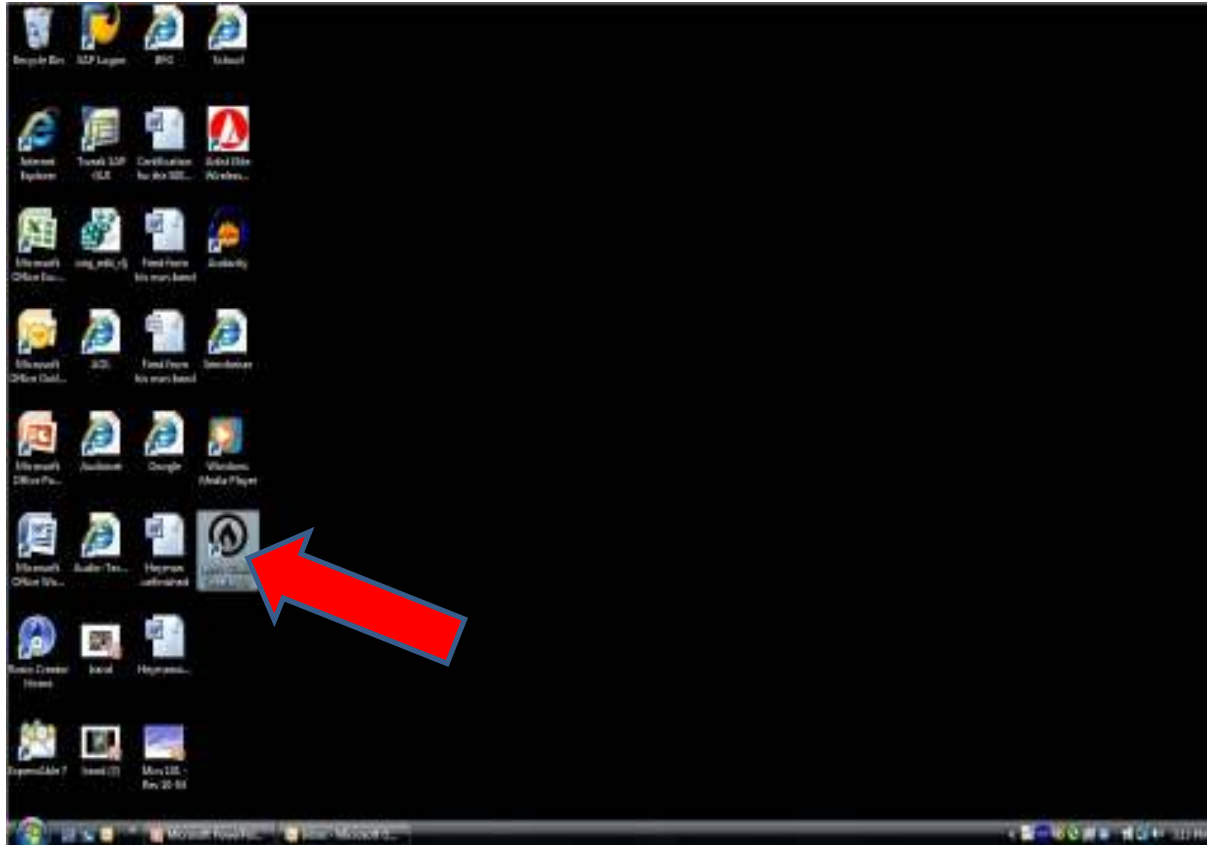
You should see a window similar to the following :



Select the "Finish" button

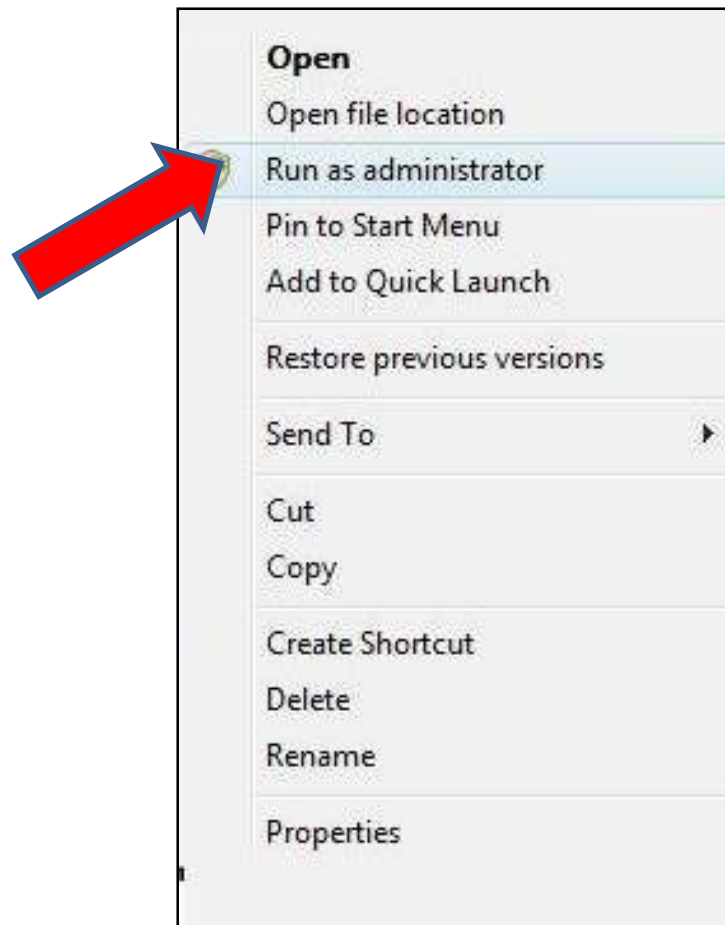
You should be returned to your main screen.

Please note there is now an icon for Audio Creator LE on your desktop



**Right click** the Audio Creator LE icon

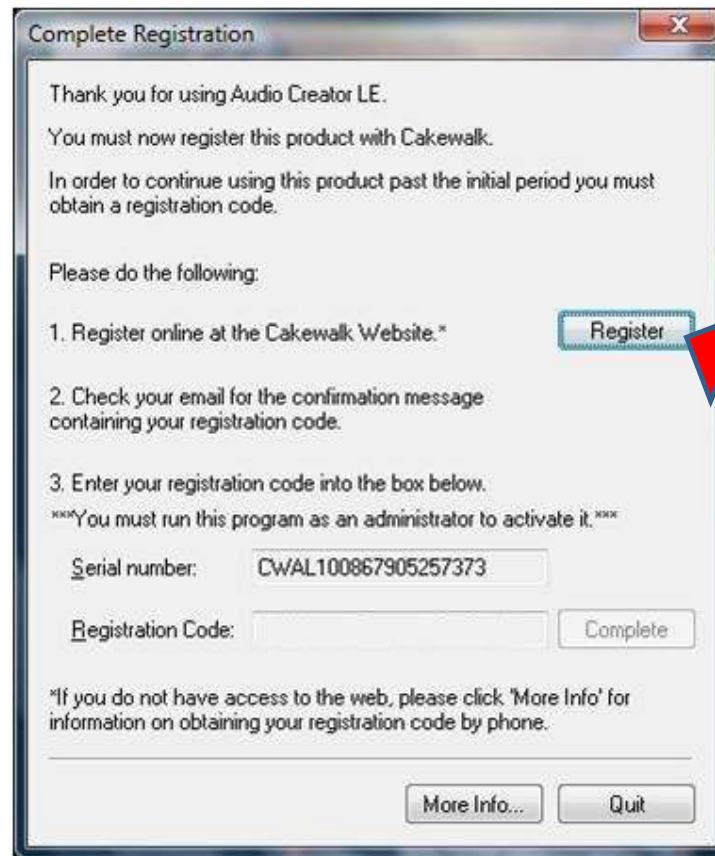
You should see a window similar to the following :



Select “Run as administrator”

You should see a window similar to the following. This begins the processes to register the product and receive full functionality

*Please note that your computer must be connected to the internet to complete this step.*



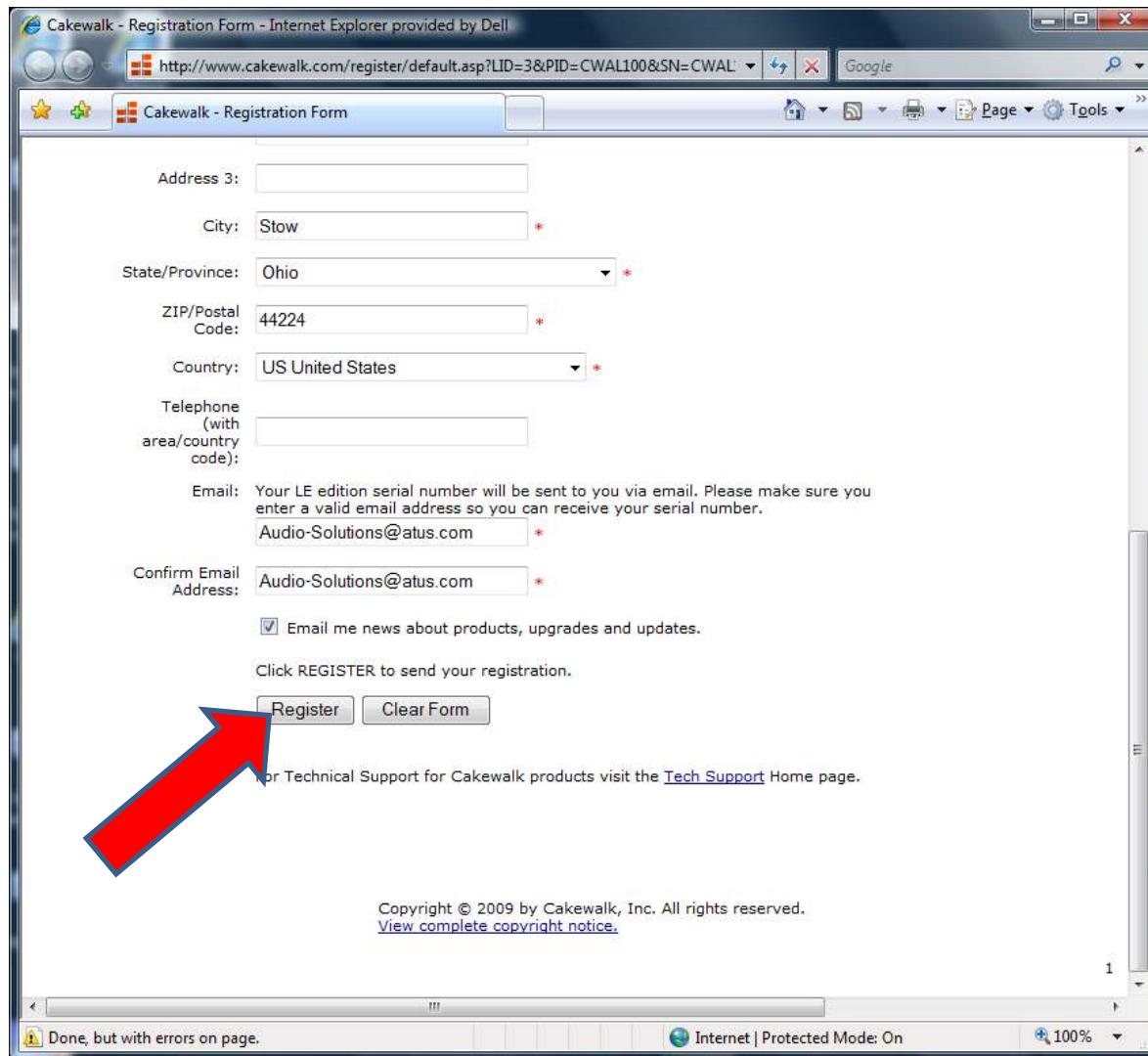
Select the "Register" button

You will be taken to the internet and presented with a form similar to the one below

The screenshot shows a web browser window titled "Cakewalk - Registration Form - Internet Explorer provided by Dell". The address bar shows the URL: <http://www.cakewalk.com/register/default.asp?LID=38&PD=CWAL1008524+CWAL1008679&Q237373>. The page features a navigation menu with links for PURCHASE, NEWS, EVENTS, FORUMS, SUPPORT, and ABOUT. Below the menu, there are product categories: PRODUCTS, SAWS/Sequencers, Integrated Hardware/Software, Instruments & Effects, and Consumer Software. The main content area contains a welcome message and instructions for registration. A red asterisk note states: "Please Note: Fields with asterisks are REQUIRED." The form fields are as follows:

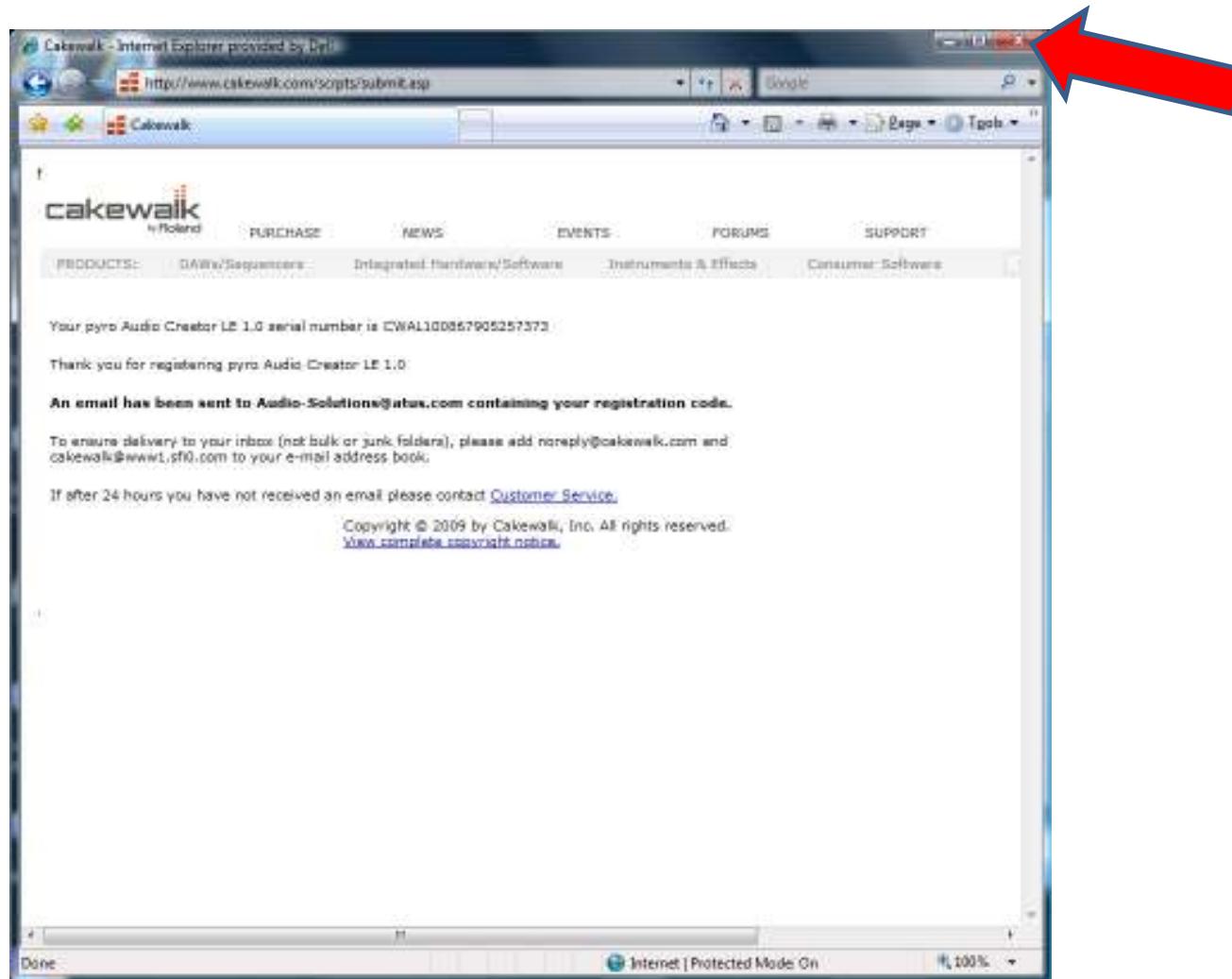
- Product: pyro Audio Creator LE 1.0
- Serial number: CWAL100867905257373
- Operating System: Windows
- First Name: [Empty field]
- Last Name: [Empty field]
- Address 1: [Empty field]
- Address 2: [Empty field]
- Address 3: [Empty field]
- City: [Empty field]
- State/Province: Select State
- ZIP/Postal Code: [Empty field]
- Country: Select Country
- Telephone: [Empty field]

Complete the form making sure to provide the required data.



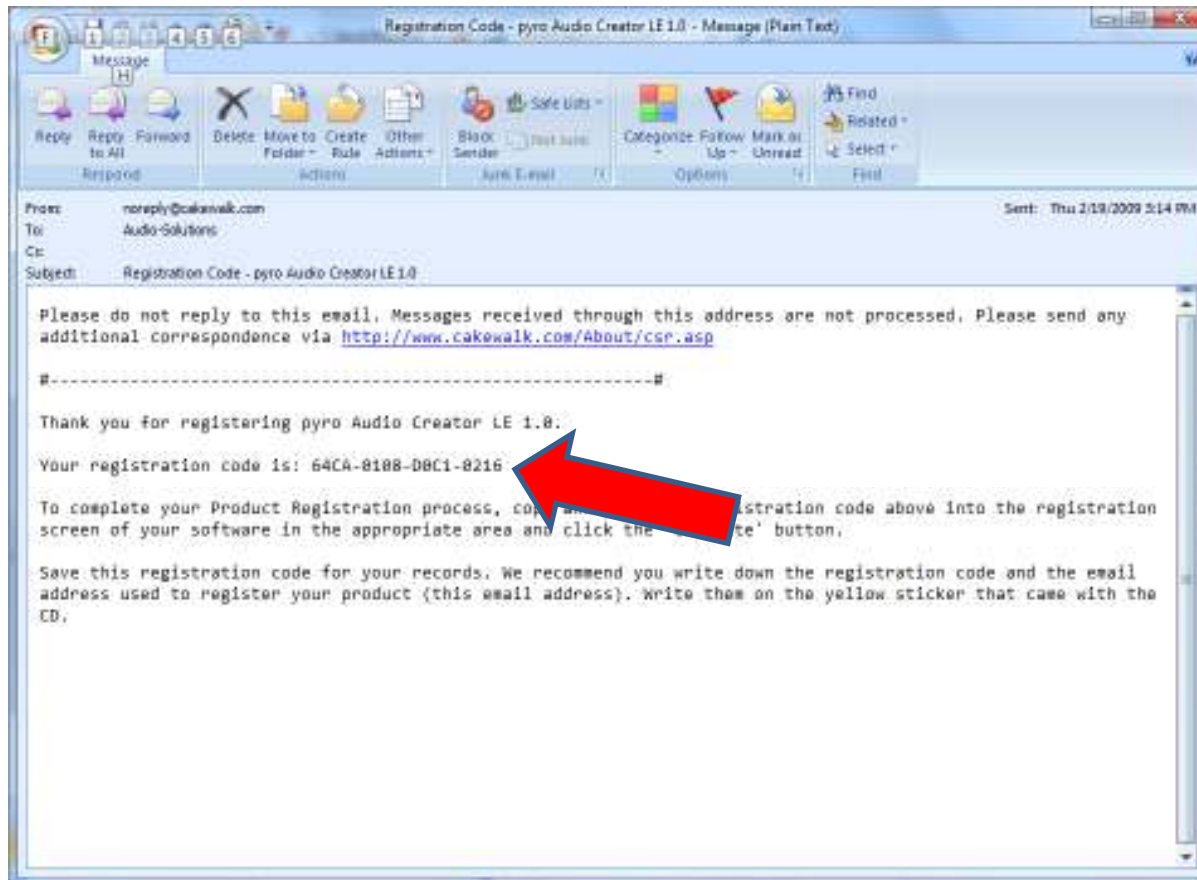
After completing the form select the “Register” button

You should see a window similar to the following :



Close the window

An email message will be sent to the address you provided containing your registration code

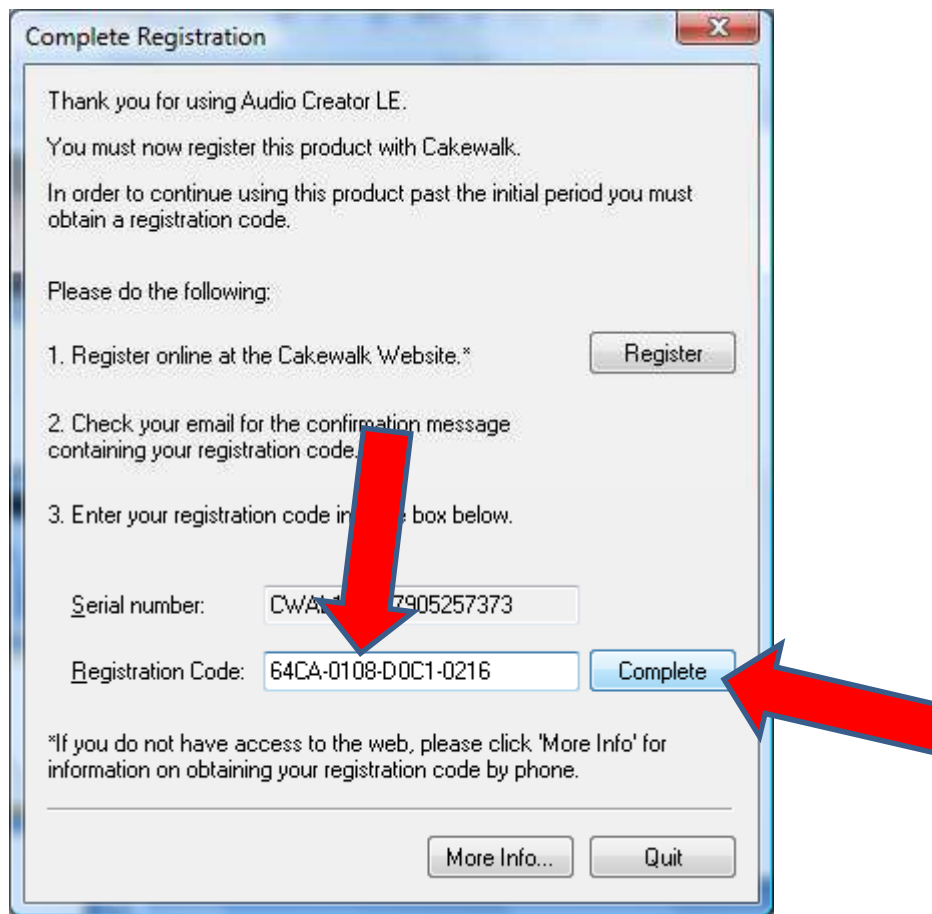


Open your email application and note the registration code.

*Note : make sure to save or print this message for future reference*

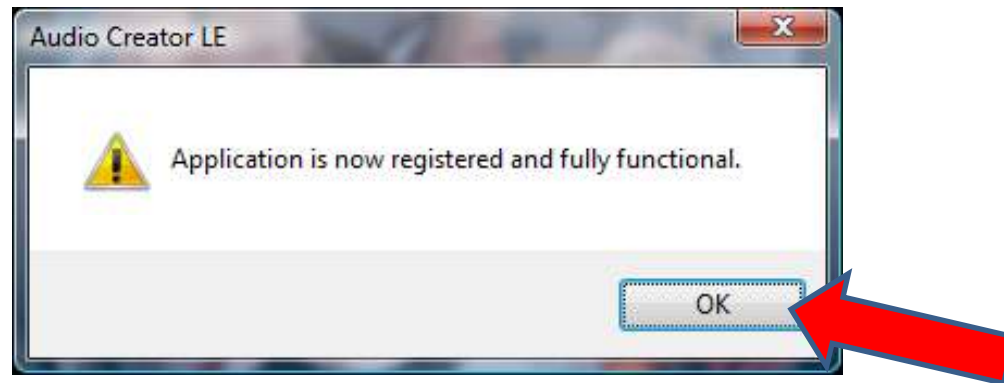


Return to your Audio Creator LE registration window.



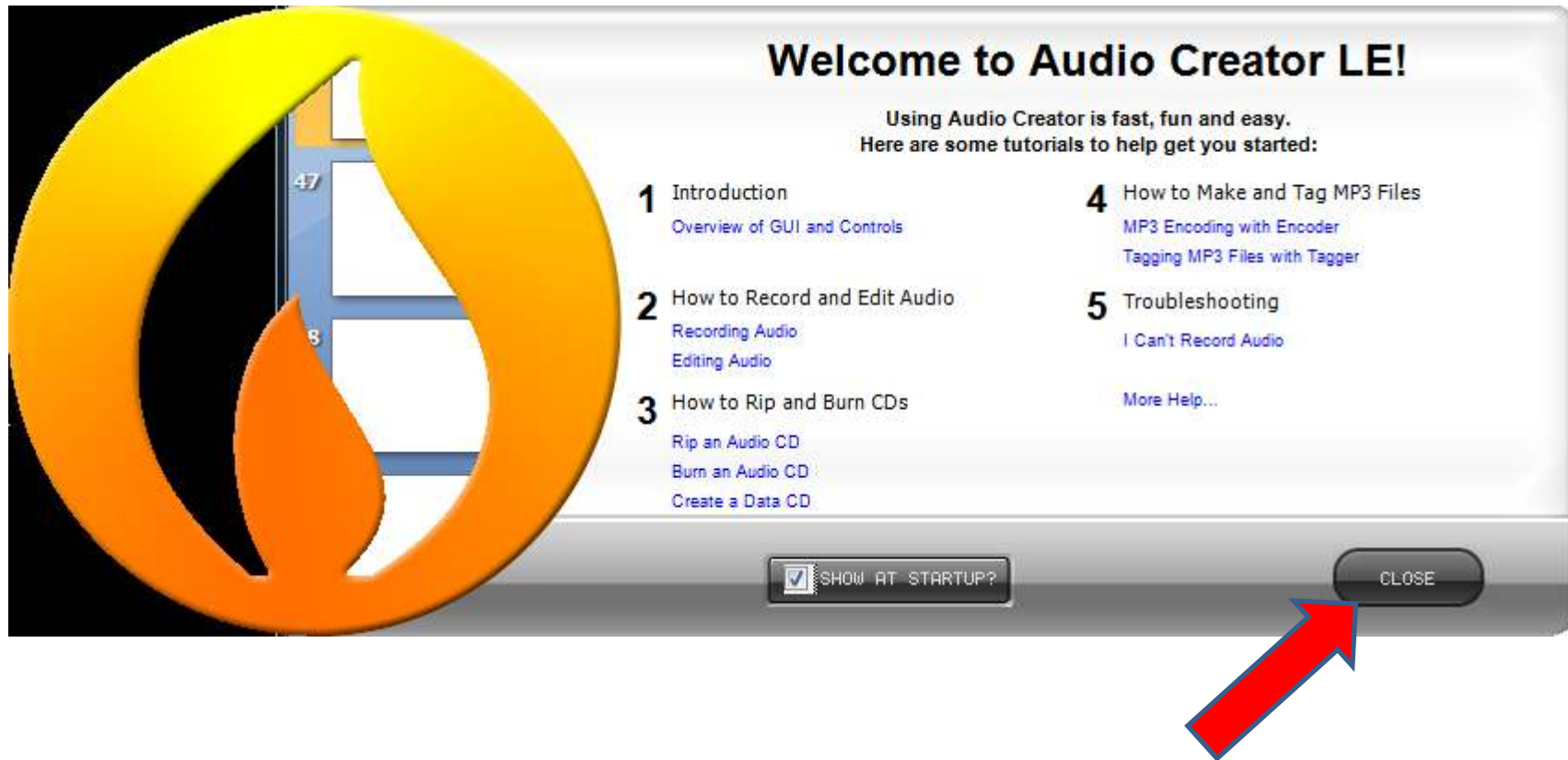
Enter the registration code. Make sure to enter all "-". Also, please note that all "0"s are numbers. Select the "Complete" button.

You should see a window similar to the following :



Select the "OK" button.

You should see a window similar to the following :



Select the “Close” button to close the window.

You should see a window similar to the following :



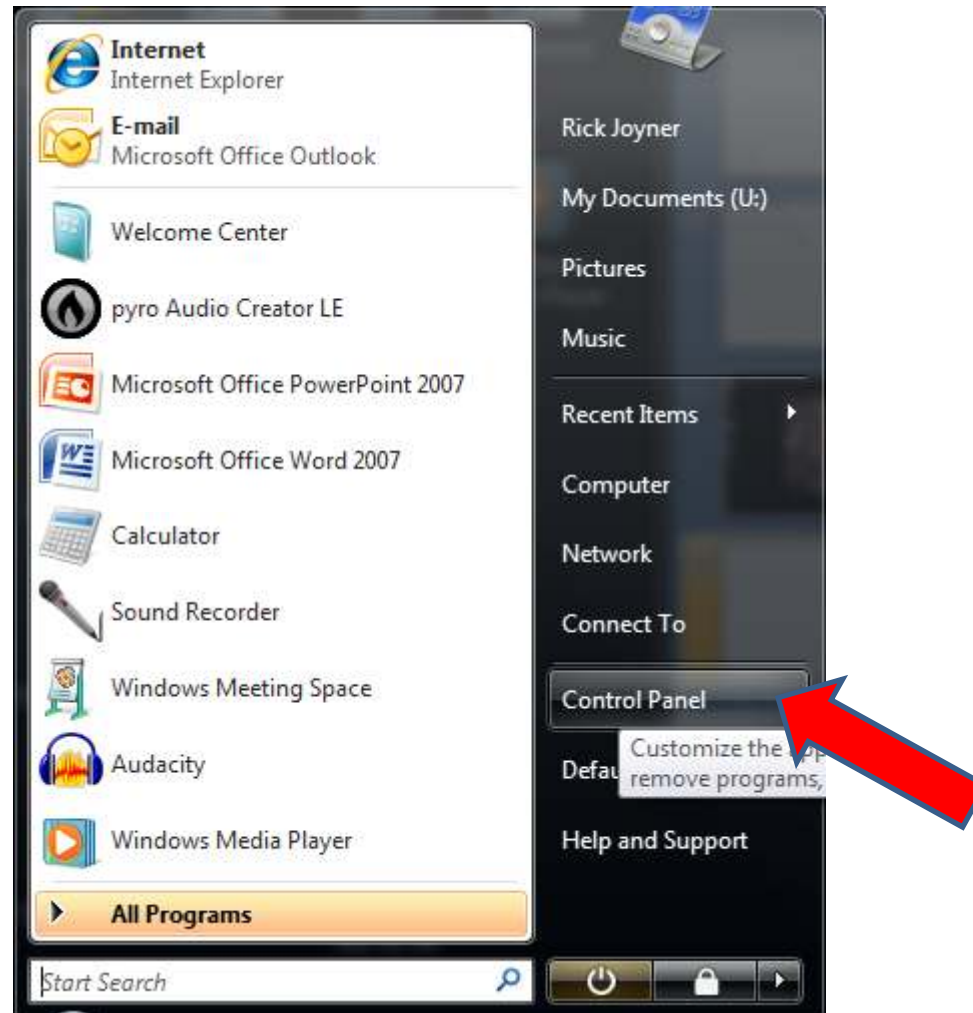
Close the window.

You should be returned to your main screen.



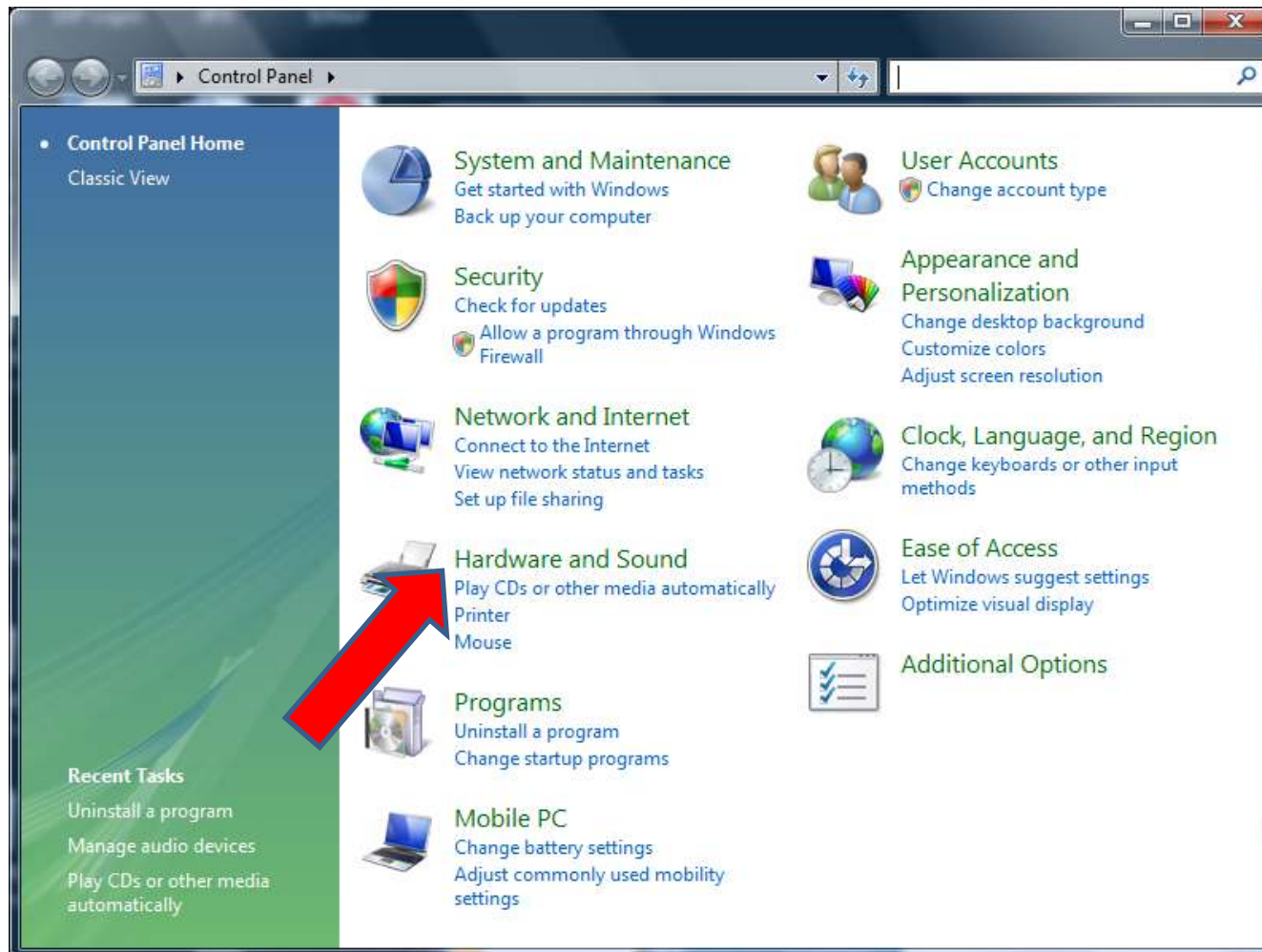
Select the start button.

You should see a window similar to the following :



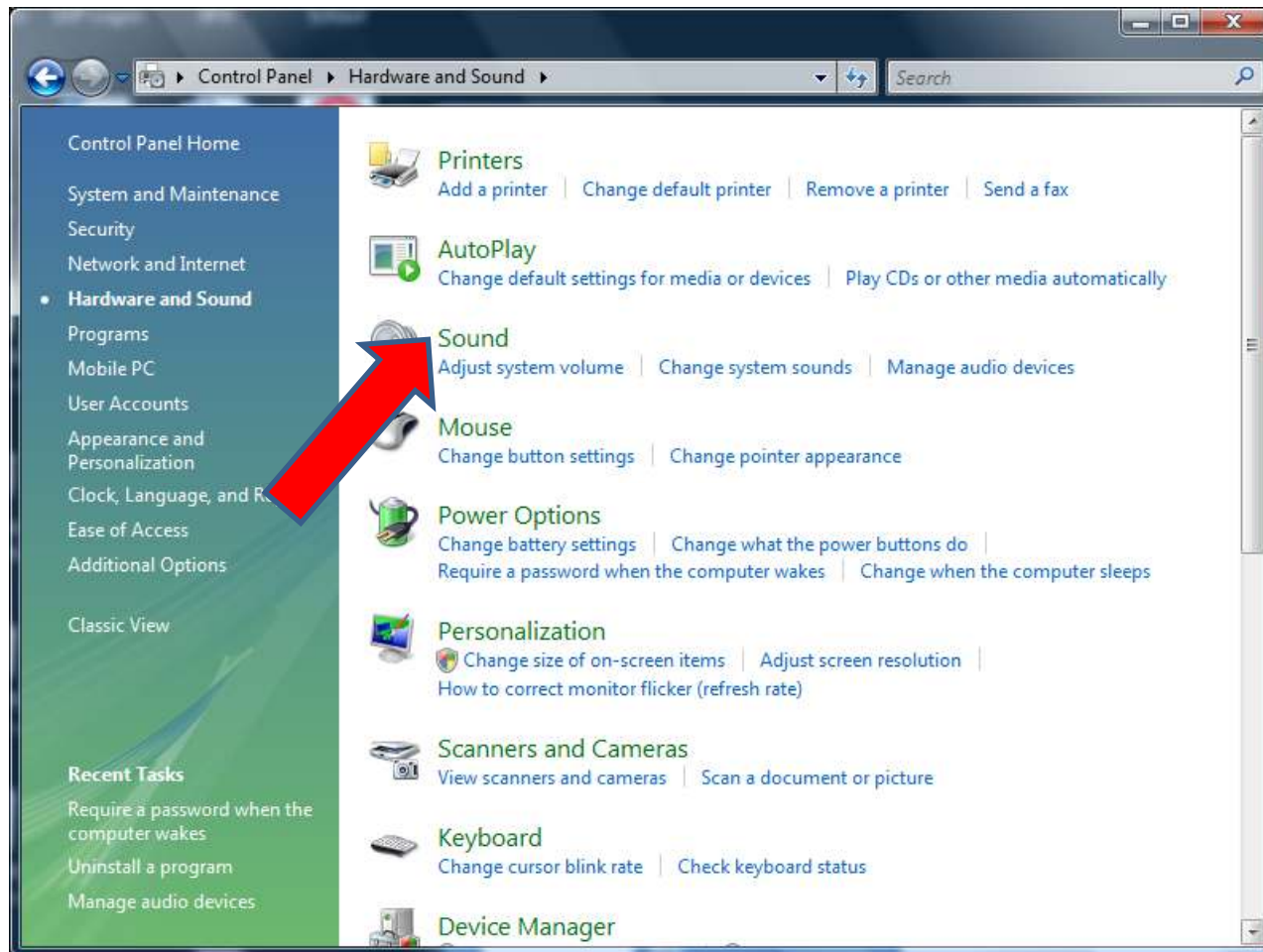
Select the Control Panel Button

You should see a window similar to the following :



Select "Hardware and Sound"

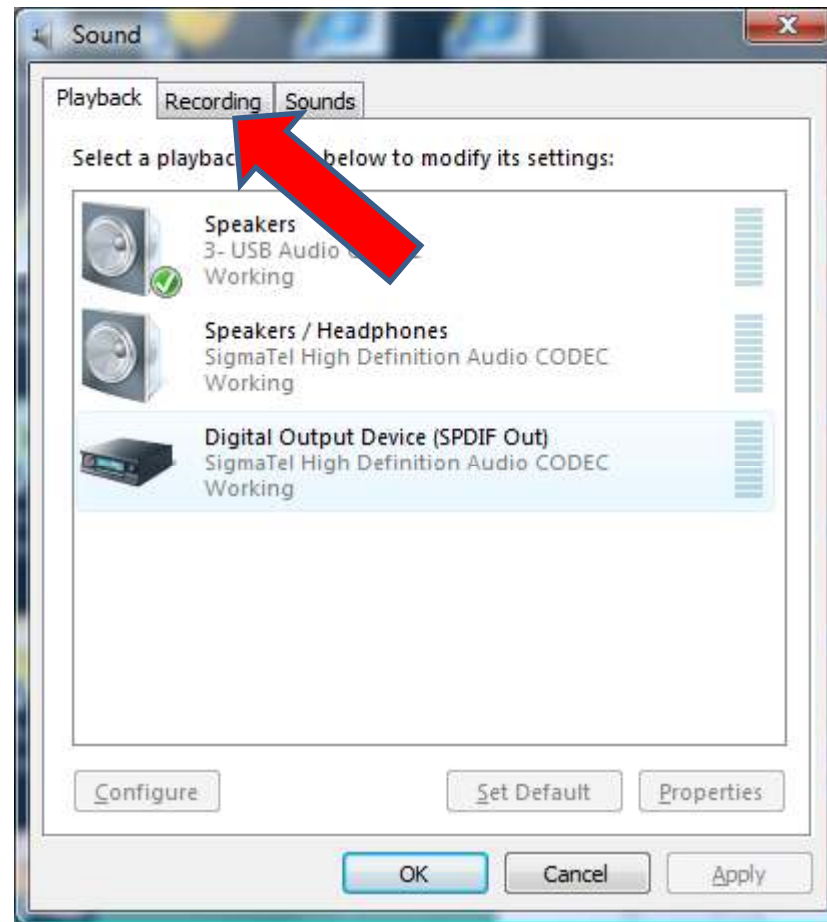
You should see a window similar to the following :



Select "Sound"

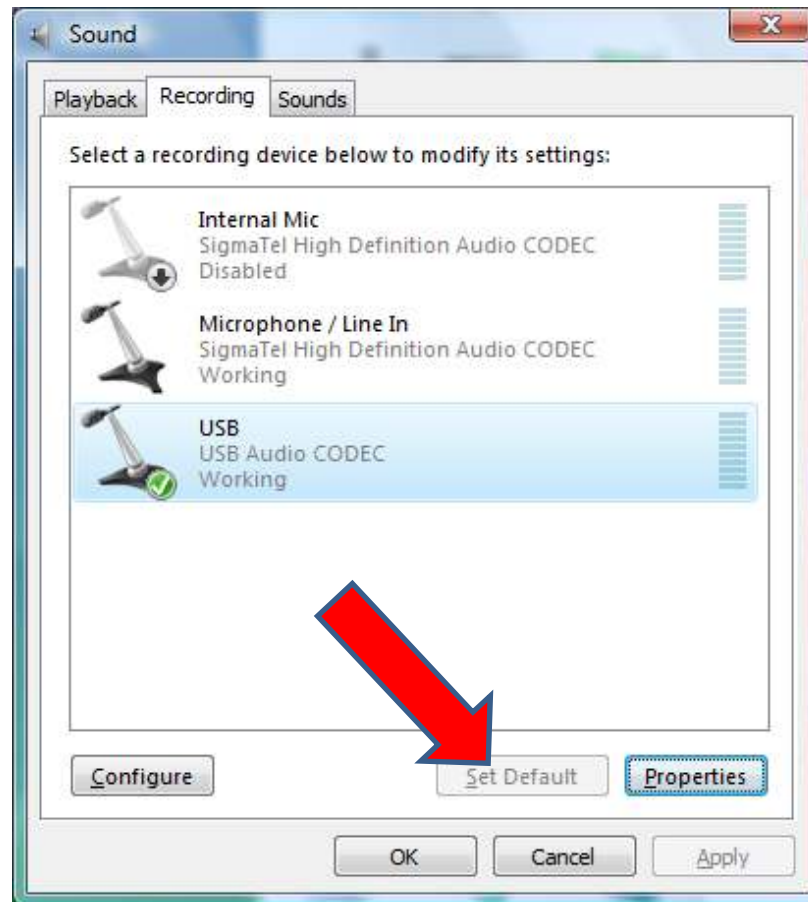


You should see a window similar to the following :

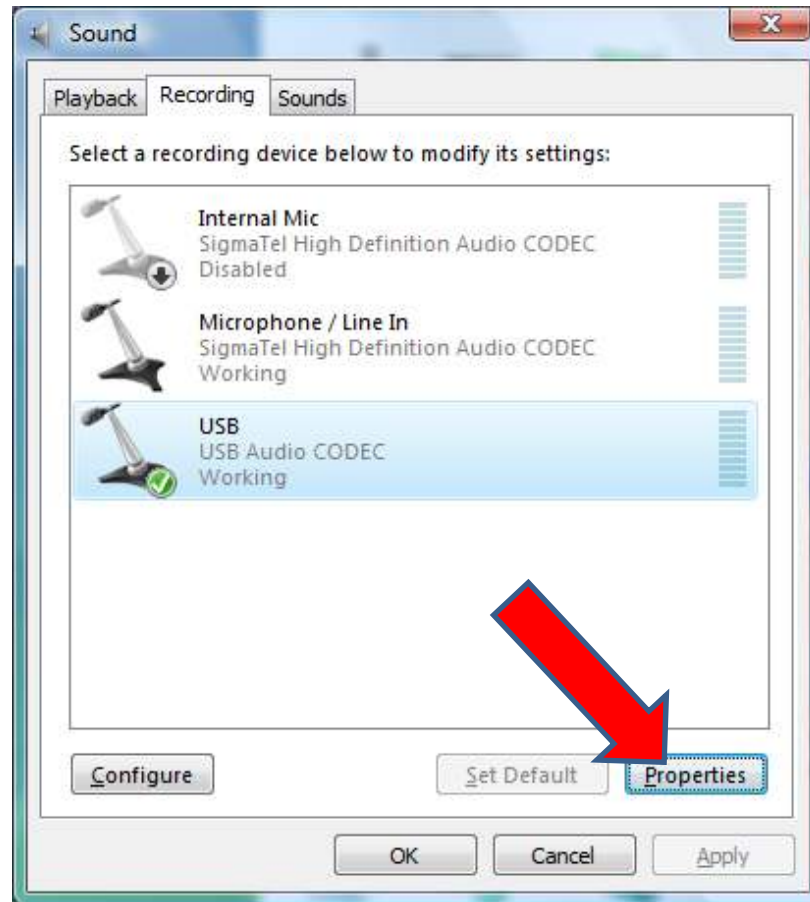


Select the "Recording" tab

You should see a window similar to the following :

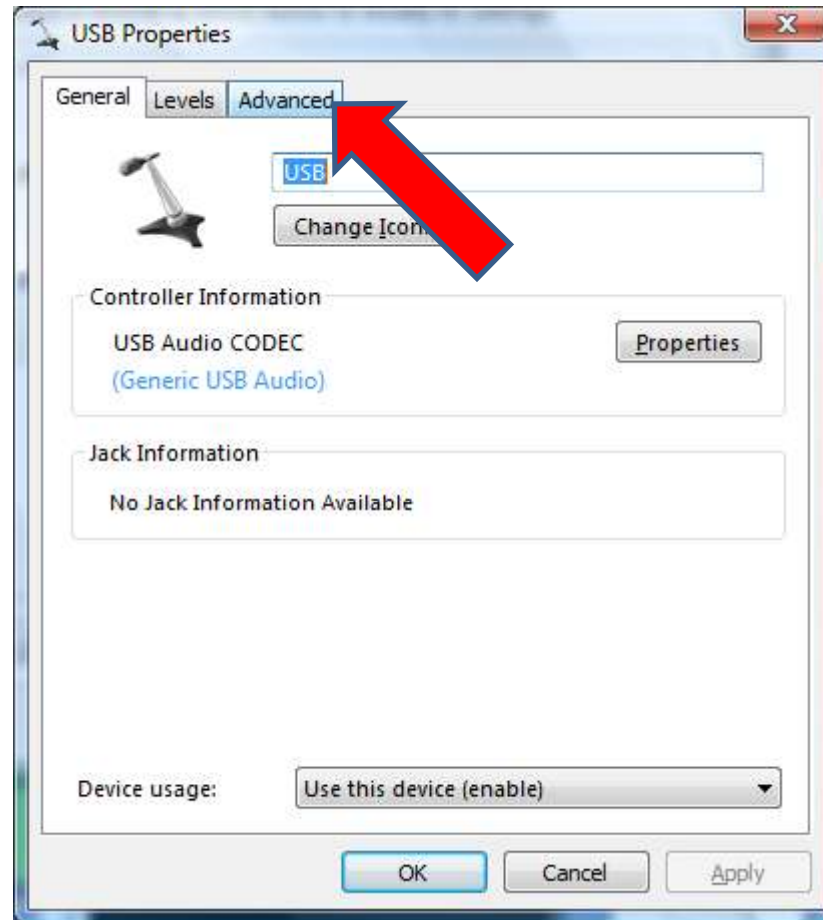


Make sure that the USB Audio Codec is the default device. If it is not select it then select the “Set Default” button



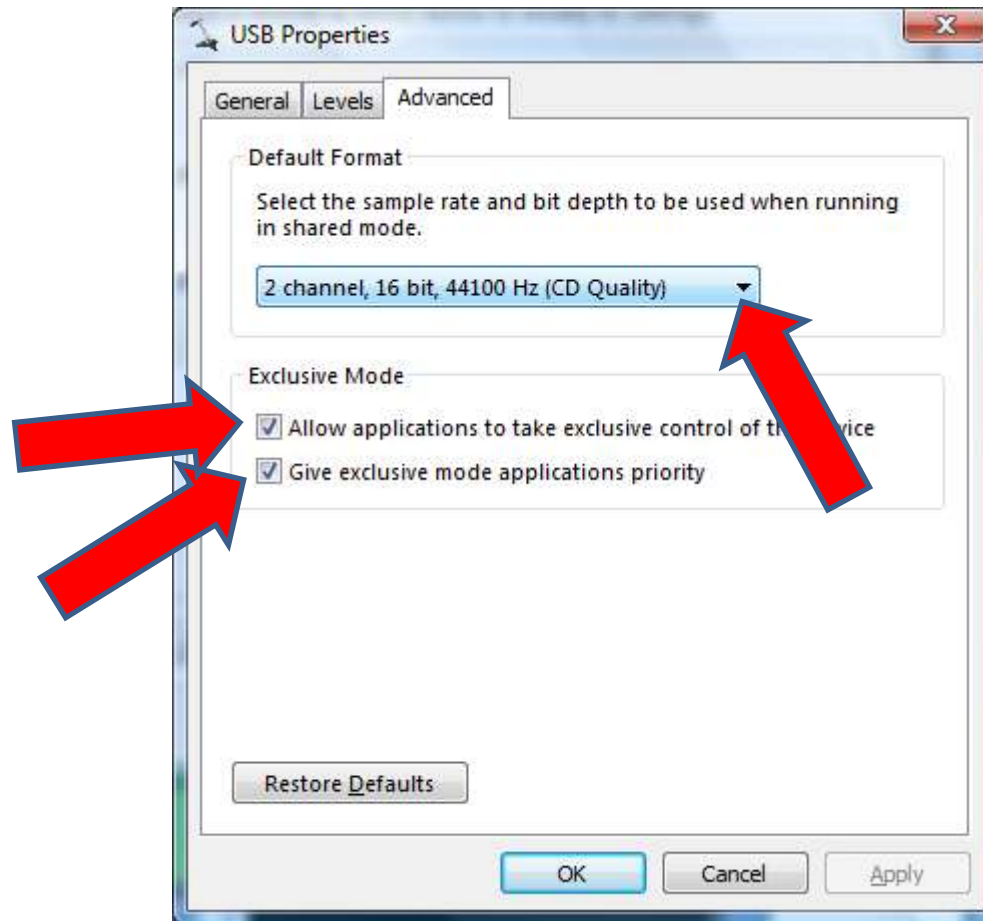
Select the USB Audio Codec and then select the “Properties” button

You should see a window similar to the following :



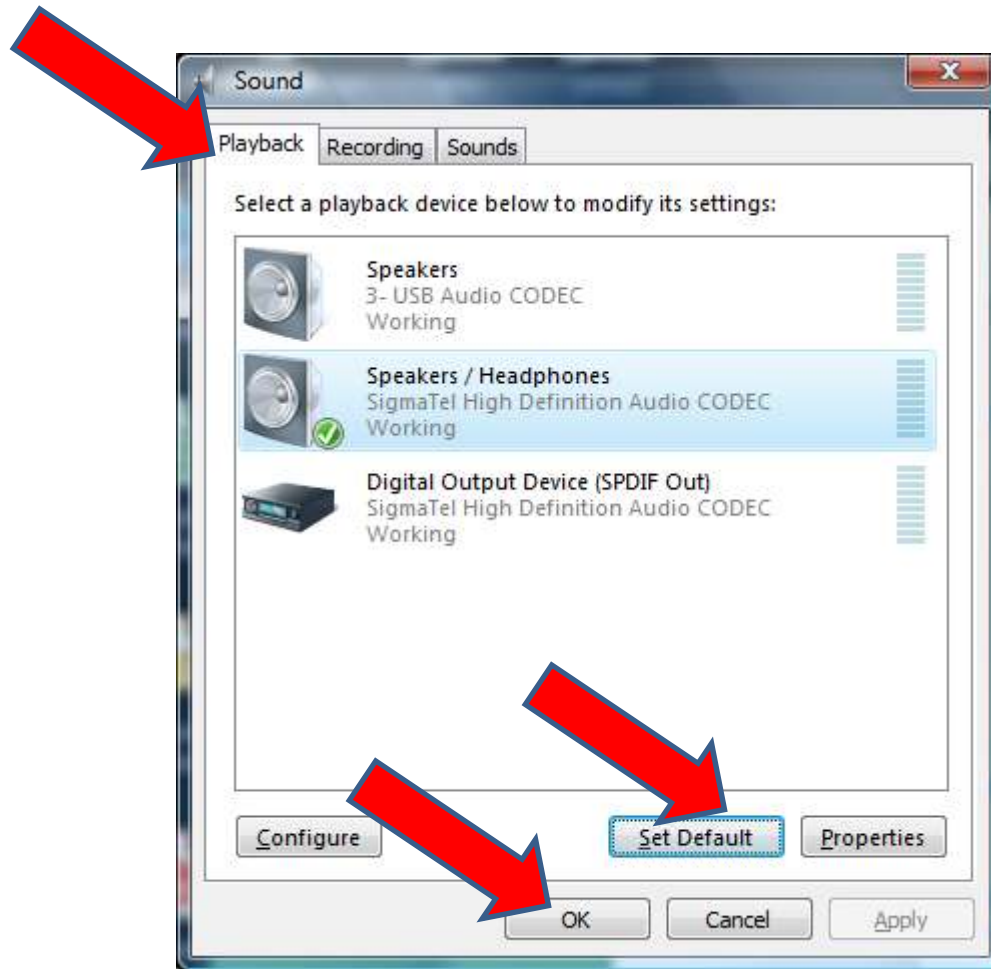
Select the “Advanced” tab

You should see a window similar to the following :



Select from the pull down menu “2 channel, 16 bit, 44100 Hz (CD Quality)”  
Make sure that all check boxes are selected.

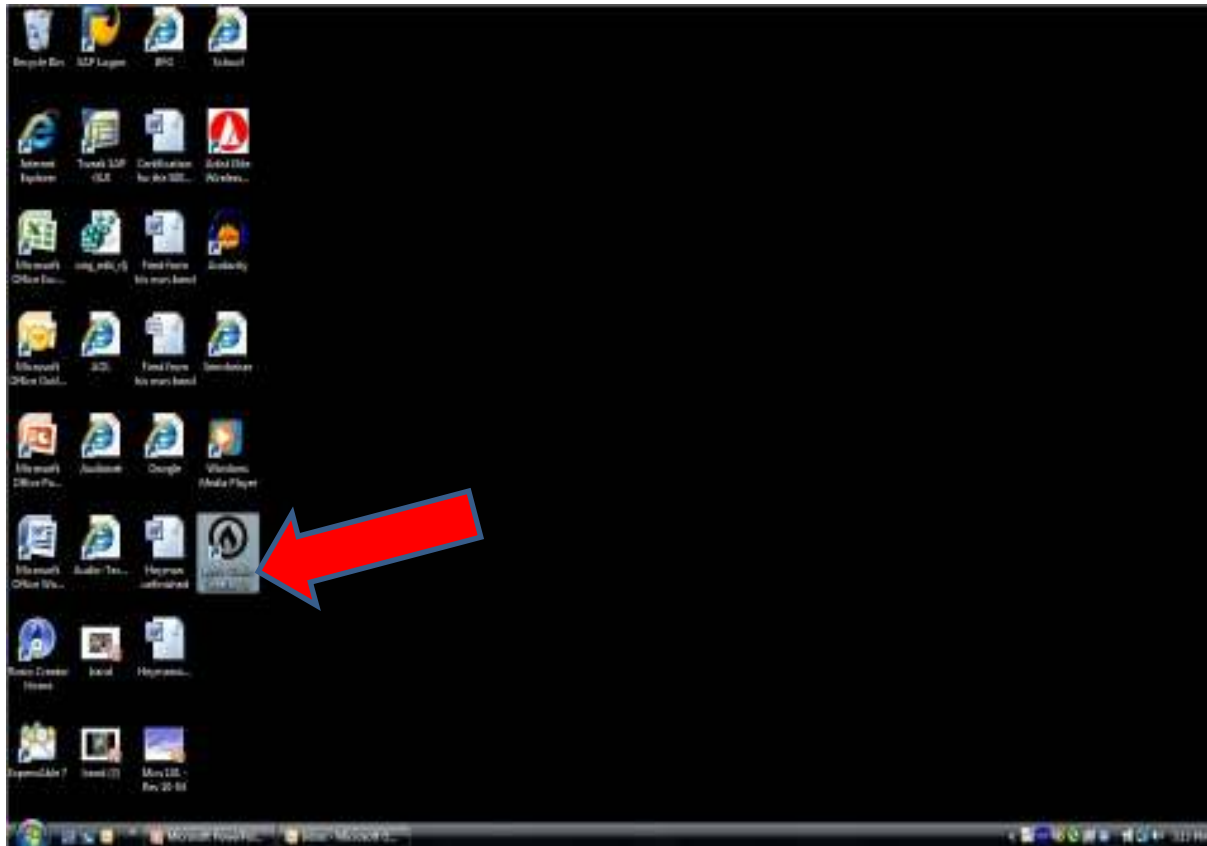
Select the “OK” button. Then close the Control Panel program



From the “Sound” window select the “Playback” tab.  
Make sure your sound card is the default device. If it is not,  
Select it and then select the “Set Default” button.

Select the “OK” button

You should be returned to your main screen.



Double click the Audio Creator LE icon to launch the application.

You should see a window similar to the following :



Select the "Close" button

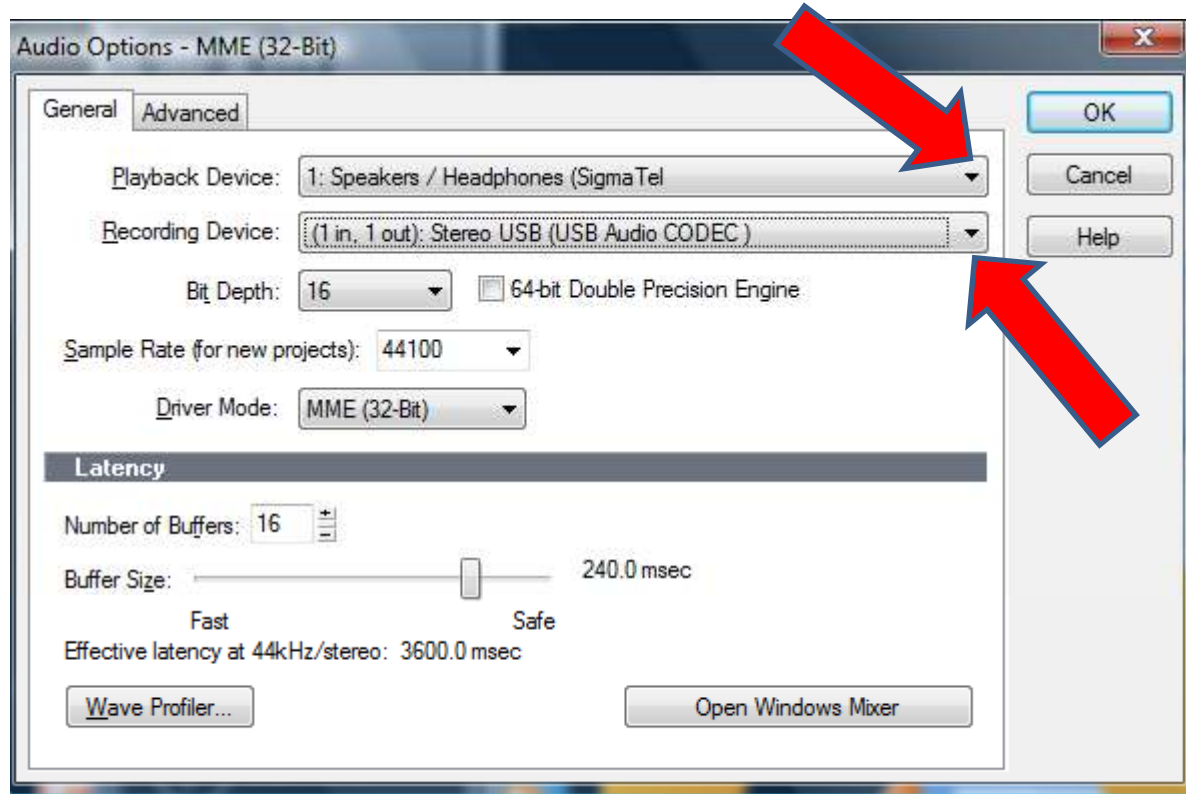


You should see a window similar to the following :



Select the “Options” button

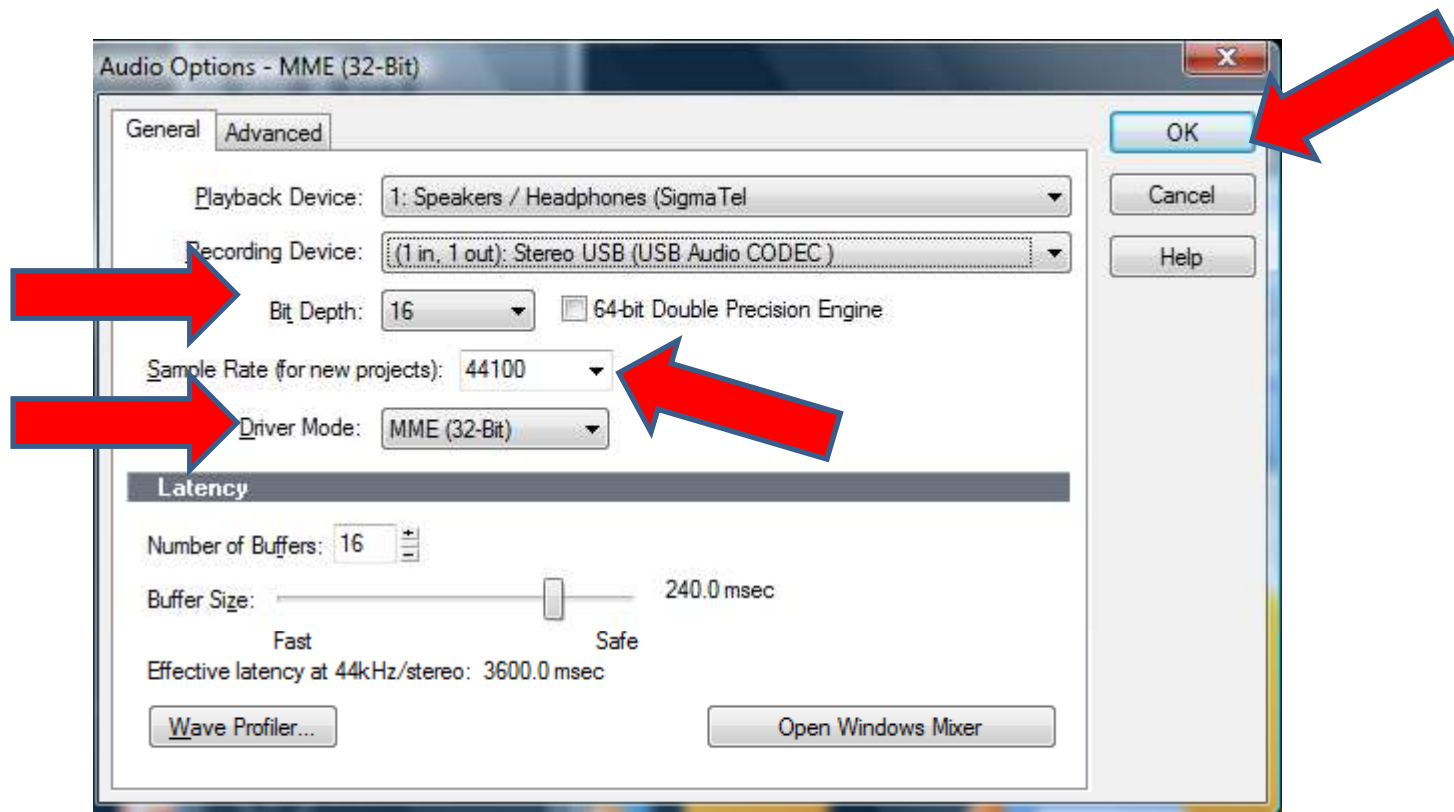
You should see a window similar to the following :



Select your sound card from the Playback Device pull down menu

Select (1 in, 1out) Stereo USB (USB Audio CODEC) from the Recording Device pull Down menu

*Continued on next page*



Make sure the following is set this way:

Bit Depth - 16

Sample Rate (for new projects) - 44100

Driver Mode - MME (32 Bit)

Select the "OK" button