

AURORA FIRE PUMPS

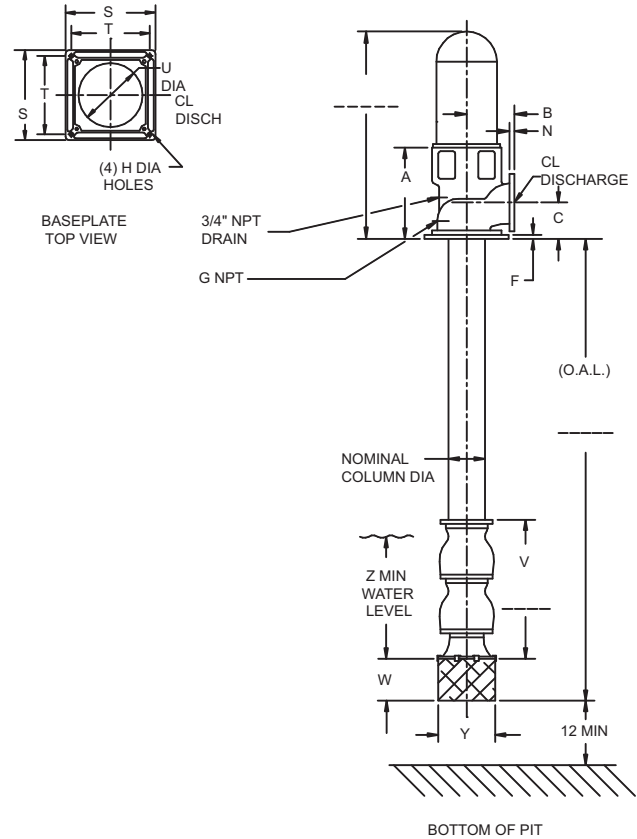
VERTICAL TURBINE

Use the following table to determine which discharge head should be used on vertical turbine fire pumps.
Both style discharge heads are shown on the setting plans where applicable.

Rated Capacity (GPM)	Bowl Design	Discharge Head Design		
		100-175 PSI Working Pressure		176-300 PSI Working Pressure
		U.L. Listed	FM Approved	U.L. Listed or FM Approved
250	10 FEM	16-1/2 x 6 SDC	16-1/2 x 6 SDC	16-1/2 x 6 LAD
300	10 FEM	16-1/2 x 6 SDC	16-1/2 x 6 SDC	16-1/2 x 6 LAD
400	10 FEM	16-1/2 x 6 SDC	16-1/2 x 6 SDC	16-1/2 x 6 LAD
500	11 FGM	16-1/2 x 6 LAD	16-1/2 x 6 LAD	16-1/2 x 6 LAD
750	12 FCM	16-1/2 x 6 LAD	16-1/2 x 6 LAD	16-1/2 x 6 LAD
750	14 FGM	16-1/2 x 8 SDC	16-1/2 x 8 SDC	16-1/2 x 8 LAD
1000	12 FCM	16-1/2 x 6 LAD	16-1/2 x 6 LAD	16-1/2 x 6 LAD
1000	14 FGM	16-1/2 x 8 SDC	16-1/2 x 8 SDC	16-1/2 x 8 LAD
1250	13 FGH	16-1/2 x 8 SDC	16-1/2 x 8 SDC	16-1/2 x 8 LAD
1500	13 FGH	16-1/2 x 8 SDC	16-1/2 x 8 SDC	16-1/2 x 8 LAD
1500	15 FGH	20 x 10 LAD	20 x 10 LAD	20 x 10 LAD
2000	15 FGH	20 x 10 LAD	20 x 10 LAD	20 x 10 LAD
2000	17 FGM	20 x 10 LAD	20 x 10 LAD	20 x 10 LAD
2500	15 FGH	20 x 10 LAD	20 x 10 LAD	20 x 10 LAD
3000	19 FGM	24-1/2 x 12 SDH	24-1/2 x 12 SDH	24-1/2 x 12 SDH
3500	19 FGM	24-1/2 x 12 SDH	24-1/2 x 12 SDH	24-1/2 x 12 SDH
4000	19 FGH	24-1/2 x 12 SDH	24-1/2 x 12 SDH	24-1/2 x 12 SDH
4500	19 FGH	24-1/2 x 12 SDH	24-1/2 x 12 SDH	24-1/2 x 12 SDH

AURORA FIRE PUMPS

ELECTRIC DRIVEN VERTICAL TURBINE



NOTES

1. Flange ratings are either 125# or 250# and will be designated in the certification block below for each order submittal.
2. Not for construction, installation, or application purposes unless certified. Dimensions shown are typical and may vary due to various tolerances.
3. All bases are designed to have full contact with either grout or a soleplate grouted in place.
4. Limited to maximum working pressure of 175 PSI.
5. For 250 GPM Z = 21". For 300 GPM and 400 GPM Z = 24".

BOWL ASSEMBLY, COLUMN & SHAFTING								
Size & Model	# of Stages	Nominal Column Dia.		V		W	Y	Z
		UL & FM Water Lube Only	All Others	UL & FM Water Lube Only	All Others			
10 FEM	4	6	6	41	41	6	10	(5)
	Total Stages		Add 8.25 for each additional stage over 4 stages					
11 FGM	4	6	8	44-13/16	47-9/16	9	11-1/2	34
	Total Stages		Add 9-1/2 for each additional stage over 4 stages					
12 FCM	3	8	8	40	42-3/4	7	13	34
	Total Stages		Add 10-3/4 for each additional stage over 3 stages					

DISCHARGE HEADS & BASEPLATES											
Size		A	B	C	F	G	H	N	S	T	U
12	6 SDH	20	11-1/2	7	1	3/4	1	1-3/8	21-1/2	17-5/32	14-1/2
16-1/2	6 SDC	23	11-3/8	10	1-1/2	1	7/8	1-1/16	24	21	17-1/8
16-1/2	6 LAD	23	10-1/4	10	1-1/2	1	7/8	1-1/16	24	21	17-1/8
16-1/2	6 SDH	20	11-1/2	7	1	3/4	1	1-3/8	21-1/2	17-5/32	14-1/2

(4)

Customer:				P.O.#:				Dwg.#			
Job Name:						<input type="checkbox"/> UL <input type="checkbox"/> FM <input type="checkbox"/> CUL			Flange Rating: <input type="checkbox"/> 125# <input type="checkbox"/> 250#		
Model:		# Stages:		GPM:		PSI:		Max. Lift:			
Motor Mfg.:		HP:	Frame:			Ph:	Hz:	V:	Encl.:		
Certified By:					Date:						

AURORA FIRE PUMPS

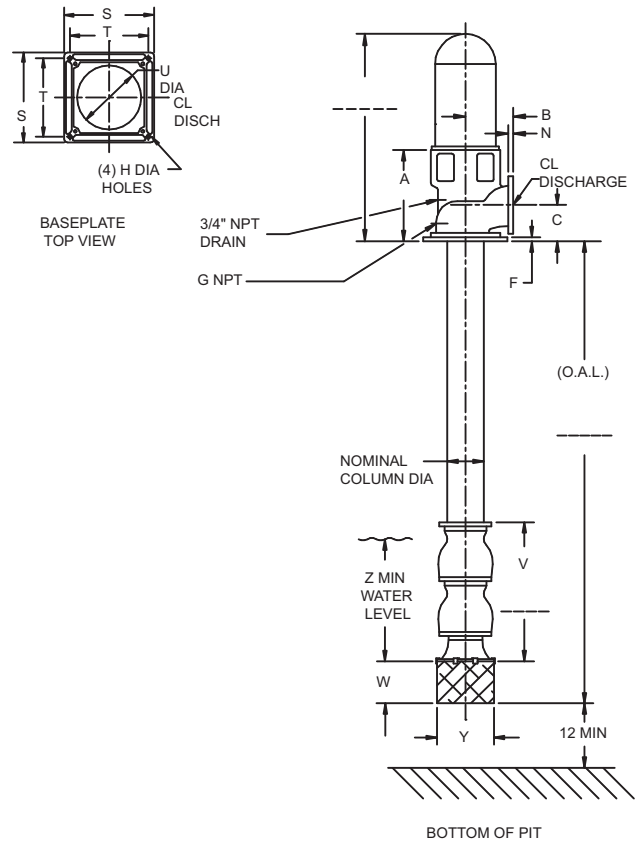
ELECTRIC DRIVEN VERTICAL TURBINE

Section **914** Page **203**

Date **May 1, 2004**

Supersedes Section 914 Page 203

Dated June 1, 2002



NOTES

1. Flange ratings are either 125# or 250# and will be designated in the certification block below for each order submittal.
2. Not for construction, installation, or application purposes unless certified. Dimensions shown are typical and may vary due to various tolerances.
3. All bases are designed to have full contact with either grout or a soleplate grouted in place.
4. Limited to maximum working pressure of 175 PSI.

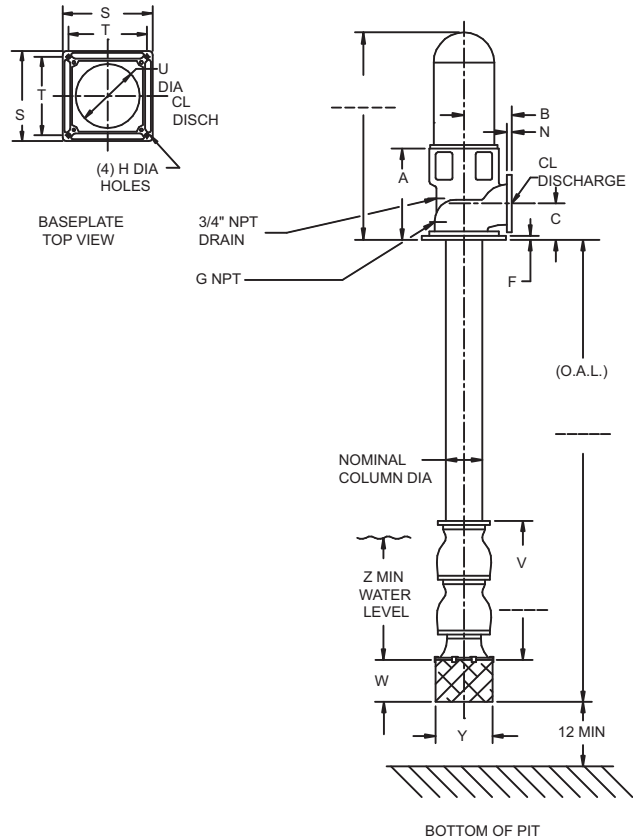
BOWL ASSEMBLY, COLUMN & SHAFTING								
Size & Model	# of Stages	Nominal Column Dia.		V		W	Y	Z
		UL & FM Water Lube Only	All Others	UL & FM Water Lube Only	All Others			
13 FGH	4	8	10	61-13/16	65-1/4	11	13	34
	Total Stages		Add 13-1/16 for each additional stage over 4 stages					
14 FGM	3	8	10	44-15/16	49-1/4	13	14-3/4	30
	Total Stages		Add 12-3/16 for each additional stage over 3 stages					
15 FGH	3	10	12	54-1/16	57-7/16	13	14-3/4	34 - 2000 GPM 46 - 2500 GPM
	Total Stages		Add 14-1/2 for each additional stage over 3 stages					

DISCHARGE HEADS & BASEPLATES											
Size											
BD	DISCH	A	B	C	F	G	H	N	S	T	U
16-1/2	8 SDH	23	11-3/8	10	1-1/2	1	7/8	1-3/16	24	21	17-1/8
16-1/2	8 LAD	23	11-3/8	10	1-1/2	1	7/8	1-3/16	24	21	17-1/8
20	10 LAD	23	13-7/8	10-1/2	1-1/2	1	7/8	1-1/4	24	21	17-1/8

Customer:				P.O.#:				Dwg.#			
Job Name:						<input type="checkbox"/> UL <input type="checkbox"/> FM <input type="checkbox"/> CUL			Flange Rating: <input type="checkbox"/> 125# <input type="checkbox"/> 250#		
Model:			# Stages:			GPM:		PSI:		Max. Lift:	
Motor Mfg.:			HP:		Frame:		Ph:	Hz:	V:	End.:	
Certified By:						Date:					

AURORA FIRE PUMPS

ELECTRIC DRIVEN VERTICAL TURBINE



NOTES

1. Flange ratings are either 125# or 250# and will be designated in the certification block below for each order submittal.
2. Not for construction, installation, or application purposes unless certified. Dimensions shown are typical and may vary due to various tolerances.
3. All bases are designed to have full contact with either grout or a soleplate grouted in place.

BOWL ASSEMBLY, COLUMN & SHAFTING								
Size & Model	# of Stages	Nominal Column Dia.		V		W	Y	Z
		UL & FM Water Lube Only	All Others	UL & FM Water Lube Only	All Others			
17 FGM	3	12	N/A	49-7/8	N/A	9	18	28
	Total Stages		Add 13-1/2 for each additional stage over 3 stages					
19 FGM	2	12	N/A	47-5/8	N/A	12	23-1/2	32
	Total Stages		Add 17-5/8 for each additional stage over 2 stages					
19 FGH	2	12	N/A	47-5/8	N/A	12	23-1/2	32
	Total Stages		Add 17-5/8 for each additional stage over 2 stages					

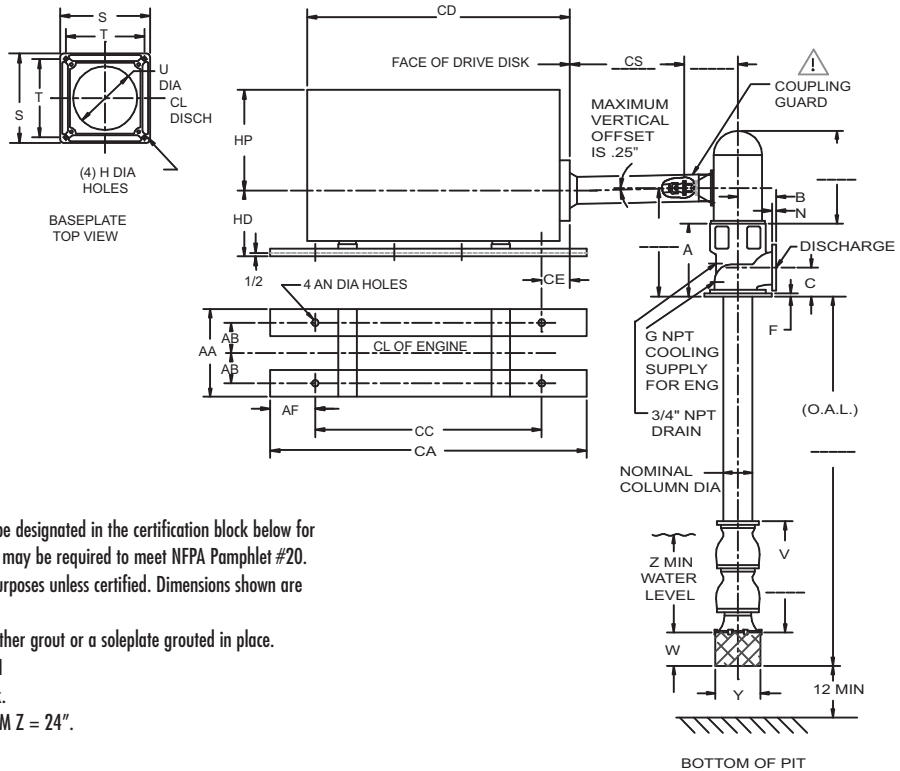
DISCHARGE HEADS & BASEPLATES											
Size		A	B	C	F	G	H	N	S	T	U
BD	DISCH										
20	10 LAD	23	13-7/8	10-1/2	1-1/2	1	7/8	1-1/4	24	21	19
24-1/2	12 SDH	28	17	13-1/2	2	3/4	1-1/8	1-7/8	32-1/2	26-5/32	24-1/2

Customer:				P.O.#:				Dwg.#			
Job Name:								<input type="checkbox"/> UL <input type="checkbox"/> FM <input type="checkbox"/> CUL		Flange Rating: <input type="checkbox"/> 125# <input type="checkbox"/> 250#	
Model:			# Stages:			GPM:		PSI:		Max. Lift:	
Motor Mfg.:			HP:		Frame:		Ph:		Hz:	V:	Encl.:
Certified By:						Date:					

AURORA FIRE PUMPS

DIESEL DRIVEN VERTICAL TURBINE

Section **914** Page **205**
 Date **September 2011**
 Supersedes Section 914 Page 205
 Dated May 2004



GEAR		
Mfg.	Ratio	Model

NOTES

1. Flange ratings are either 125# or 250# and will be designated in the certification block below for each order submittal. Reducers and/or increasers may be required to meet NFPA Pamphlet #20.
2. Not for construction, installation, or application purposes unless certified. Dimensions shown are typical and may vary due to various tolerances.
3. All bases are designed to have full contact with either grout or a soleplate grouted in place.
4. Limited to maximum working pressure of 175 PSI
5. CD, CE & CS are dimensioned to face of drive disk.
6. For 250 GPM Z = 21". For 300 GPM and 400 GPM Z = 24".

BOWL ASSEMBLY, COLUMN & SHAFTING								
Size & Model	# of Stages	Nominal Column Dia.		V		W	Y	Z
		UL & FM Water Lube Only	All Others	UL & FM Water Lube Only	All Others			
10 FEM	4	6	6	41	41	6	10	(6)
	Total Stages		Add 8-1/4 for each additional stage over 4 stages					
11 FGM	4	6	8	44-13/16	47-9/16	9	11-1/2	34
	Total Stages		Add 9-1/2 for each additional stage over 4 stages					

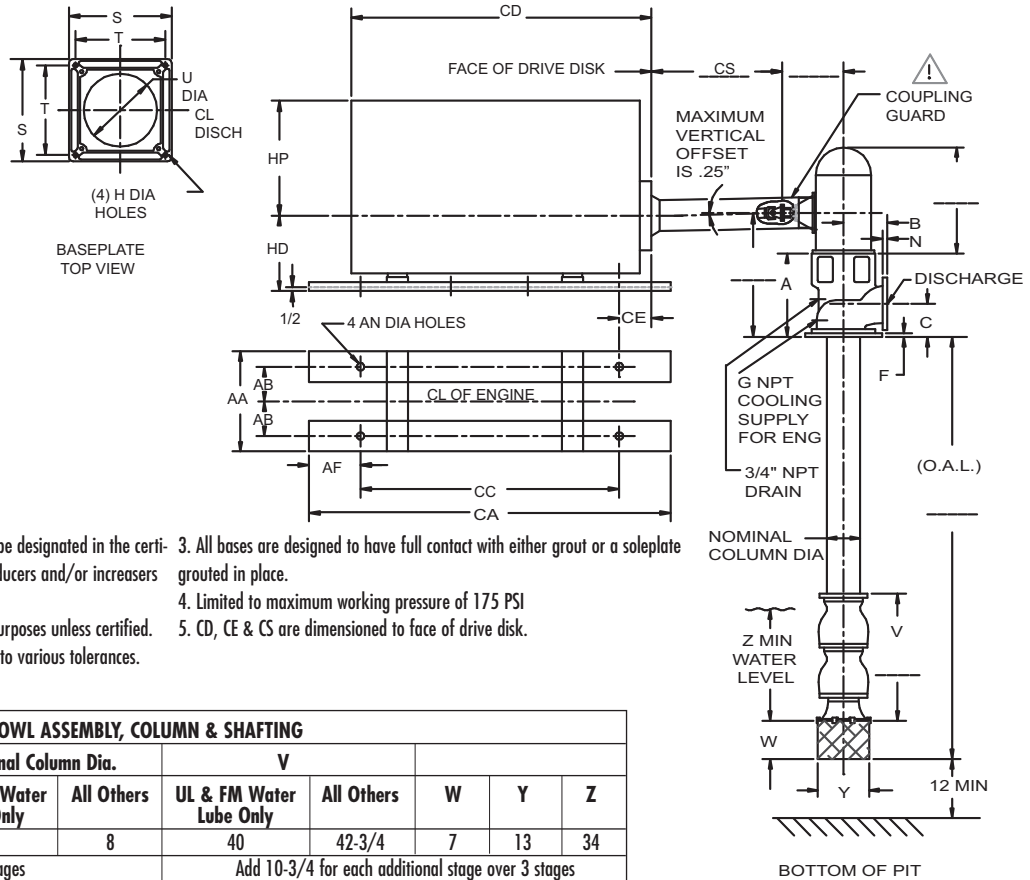
DISCHARGE HEADS & BASEPLATES											
Size		A	B	C	F	G	H	N	S	T	U
16-1/2	6 SDC	23	11-3/8	10	1-1/2	1	7/8	1-1/16	24	21	17-1/8
16-1/2	6 LAD	23	10-1/4	10	1-1/2	1	7/8	1-1/16	24	21	17-1/8

CLARKE JU4H DIESEL ENGINES												
MODEL	AA	AB	AF	AN	CA	CB	CC	CD	CE	CS	HD	HP
JU4HUF10	32	15	5	1 x 2	40	N/A	30	35.75	2.26	10	20.25	40.5
JU4HUF20	32	15	5	1 x 2	40	N/A	30	35.75	2.26	10	20.25	40.5
JU4HUF30	32	15	5	1 x 2	40	N/A	30	35.75	2.26	10.5	20.25	45
JU4HUF40	32	15	5	1 x 2	40	N/A	30	35.75	2.26	10.5	20.25	45

Customer:				P.O.#:				Dwg.#			
Job Name:						<input type="checkbox"/> UL <input type="checkbox"/> FM <input type="checkbox"/> CUL			Flange Rating: <input type="checkbox"/> 125# <input type="checkbox"/> 250#		
Model:			# Stages:			GPM:		PSI:		Max. Lift:	
Engine Mfg.:			Engine Model:			RPM:		HP:			
Certified By:					Date:						

AURORA FIRE PUMPS

DIESEL DRIVEN VERTICAL TURBINE



GEAR		
Mfg.	Ratio	Model

NOTES

1. Flange ratings are either 125# or 250# and will be designated in the certification block below for each order submittal. Reducers and/or increasers may be required to meet NFPA Pamphlet #20.
2. Not for construction, installation, or application purposes unless certified. Dimensions shown are typical and may vary due to various tolerances.
3. All bases are designed to have full contact with either grout or a soleplate grouted in place.
4. Limited to maximum working pressure of 175 PSI
5. CD, CE & CS are dimensioned to face of drive disk.

BOWL ASSEMBLY, COLUMN & SHAFTING								
Size & Model	# of Stages	Nominal Column Dia.		V		W	Y	Z
		UL & FM Water Lube Only	All Others	UL & FM Water Lube Only	All Others			
12 FCM	3	8	8	40	42-3/4	7	13	34
	Total Stages		Add 10-3/4 for each additional stage over 3 stages					
13 FGH	4	8	10	61-13/16	65-1/4	11	13	34
	Total Stages		Add 13-1/16 for each additional stage over 4 stages					

DISCHARGE HEADS & BASEPLATES											
Size		A	B	C	F	G	H	N	S	T	U
12	6 SDH	23	11-1/2	8-1/2	1-1/2	3/4	1	1-3/8	21-1/4	17-5/32	14-1/2
16-1/2	8 SDC	23	11-3/8	10	1-1/2	1	7/8	1-3/16	24	21	17-1/8
16-1/2	8 LAD	23	11-3/8	10	1-1/2	1	7/8	1-3/16	24	21	17-1/8
16-1/2	6 LAD	23	10-1/4	10	1-1/2	1	7/8	1-1/16	24	21	17-1/8
16-1/2	6 SDH	21-1/2	11-1/2	8-1/2	1-1/2	3/4	1	1-3/8	21-1/4	17-5/32	14-1/2

CLARKE JU4H DIESEL ENGINES												
MODEL	AA	AB	AF	AN	CA	CB	CC	CD	CE	CS	HD	HP
JU4HUF10	32	15	5	1 x 2	40	N/A	30	35.75	2.26	10	20.25	40.5
JU4HUF20	32	15	5	1 x 2	40	N/A	30	35.75	2.26	10	20.25	40.5
JU4HUF30	32	15	5	1 x 2	40	N/A	30	35.75	2.26	10.5	20.25	45
JU4HUF40	32	15	5	1 x 2	40	N/A	30	35.75	2.26	10.5	20.25	45
JU4HUF50	32	15	5	1 x 2	40	N/A	30	35.75	2.26	15.2	20.25	45

Customer:				P.O.#:				Dwg.#			
Job Name:				<input type="checkbox"/> UL <input type="checkbox"/> FM <input type="checkbox"/> CUL				Flange Rating: <input type="checkbox"/> 125# <input type="checkbox"/> 250#			
Model:		# Stages:		GPM:		PSI:		Max. Lift:			
Engine Mfg.:		Engine Model:		RPM:		HP:					
Certified By:				Date:							



AURORA FIRE PUMPS

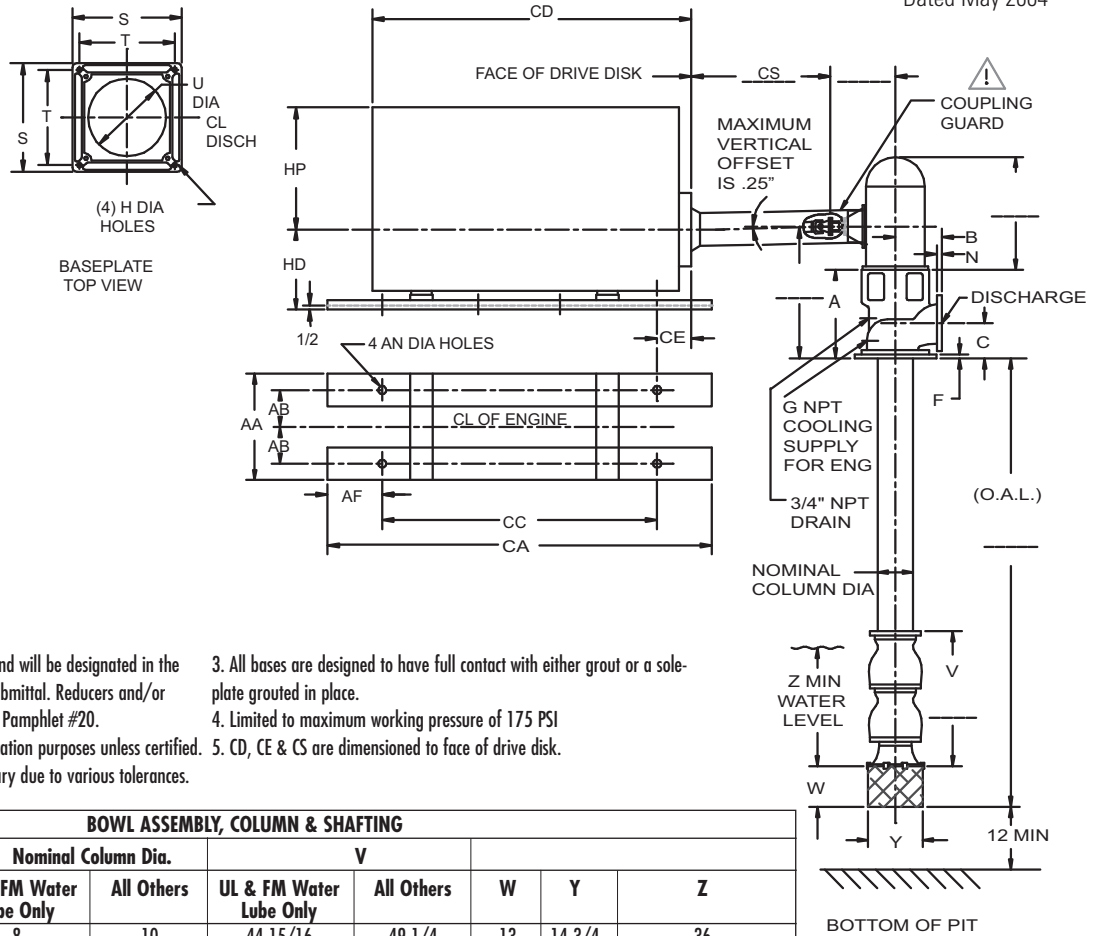
DIESEL DRIVEN VERTICAL TURBINE

Section **914** Page **207**

Date **September 2011**

Supersedes Section 914 Page 207

Dated May 2004



GEAR		
Mfg.	Ratio	Model

NOTES

1. Flange ratings are either 125# or 250# and will be designated in the certification block below for each order submittal. Reducers and/or increasers may be required to meet NFPA Pamphlet #20.
2. Not for construction, installation, or application purposes unless certified. Dimensions shown are typical and may vary due to various tolerances.
3. All bases are designed to have full contact with either grout or a sole-plate grouted in place.
4. Limited to maximum working pressure of 175 PSI
5. CD, CE & CS are dimensioned to face of drive disk.

BOWL ASSEMBLY, COLUMN & SHAFTING								
Size & Model	# of Stages	Nominal Column Dia.		V		W	Y	Z
		UL & FM Water Lube Only	All Others	UL & FM Water Lube Only	All Others			
14 FGM	3	8	10	44-15/16	49-1/4	13	14-3/4	36
		Total Stages		Add 12-3/16 for each additional stage over 3 stages				
15 FGH	3	10	12	54-1/16	57-7/16	13	14-3/4	34 - 2000 GPM 46 - 2500 GPM
		Total Stages		Add 14-1/2 for each additional stage over 3 stages				

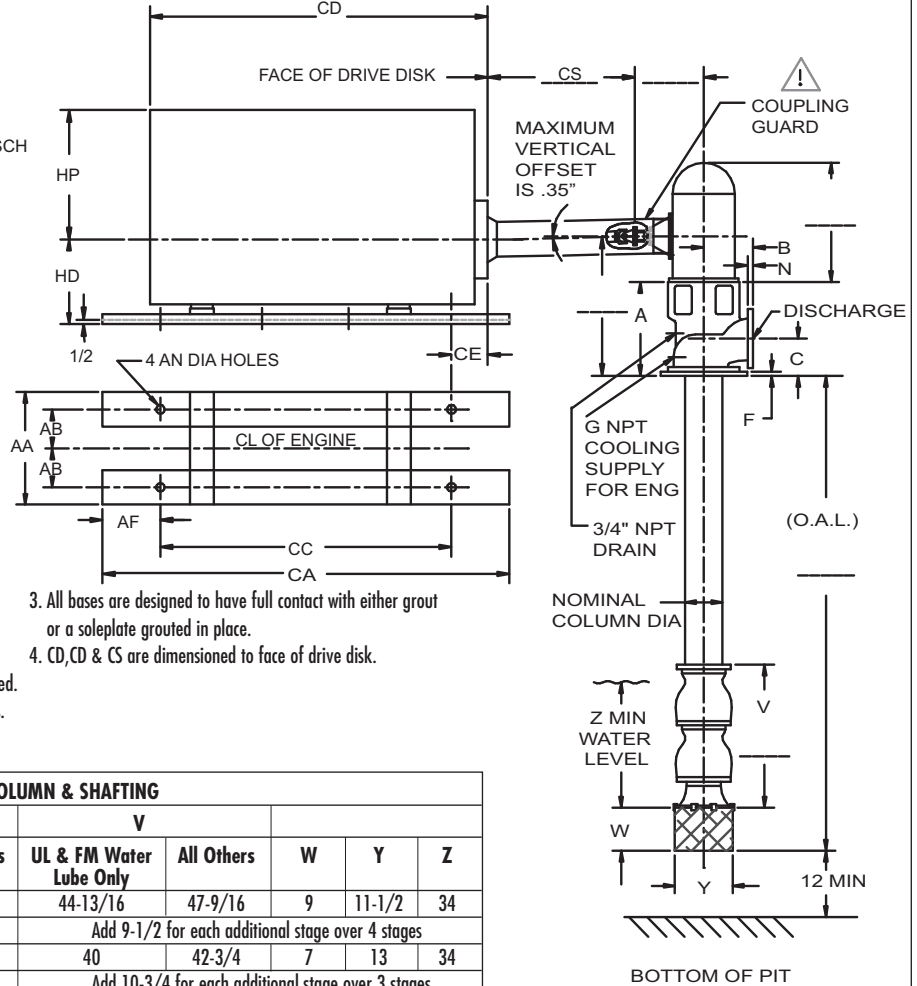
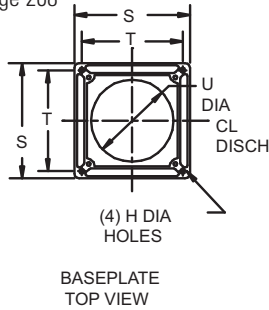
DISCHARGE HEADS & BASEPLATES											
Size		A	B	C	F	G	H	N	S	T	U
16-1/2	8 SDC	23	11-3/8	10	1-1/2	1	7/8	1-3/16	24	21	17-1/8
16-1/2	8 LAD	23	11-3/8	10	1-1/2	1	7/8	1-3/16	24	21	17-1/8
20	10 LAD	23	13-7/8	10-1/2	1-1/2	1	7/8	1-1/4	24	21	17-1/8

CLARKE JU4H DIESEL ENGINES												
MODEL	AA	AB	AF	AN	CA	CB	CC	CD	CE	CS	HD	HP
JU4HUF40	32	15	5	1 x 2	40	N/A	30	35.75	2.26	10.5	20.25	45
JU4HUF50	32	15	5	1 x 2	40	N/A	30	35.75	2.26	15.2	20.25	45

Customer:				P.O.#:				Dwg.#			
Job Name:						<input type="checkbox"/> UL <input type="checkbox"/> FM <input type="checkbox"/> CUL			Flange Rating: <input type="checkbox"/> 125# <input type="checkbox"/> 250#		
Model:			# Stages:			GPM:		PSI:		Max. Lift:	
Engine Mfg.:			Engine Model:			RPM:		HP:			
Certified By:					Date:						

AURORA FIRE PUMPS

DIESEL DRIVEN VERTICAL TURBINE



GEAR		
Mfg.	Ratio	Model

- NOTES**
- Flange ratings are either 125# or 250# and will be designated in the certification block below for each order submittal. Reducers and/or increasers may be required to meet NFPA Pamphlet #20.
 - Not for construction, installation, or application purposes unless certified. Dimensions shown are typical and may vary due to various tolerances.

- All bases are designed to have full contact with either grout or a soleplate grouted in place.
- CD, CD & CS are dimensioned to face of drive disk.

BOWL ASSEMBLY, COLUMN & SHAFTING								
Size & Model	# of Stages	Nominal Column Dia.		V		W	Y	Z
		UL & FM Water Lube Only	All Others	UL & FM Water Lube Only	All Others			
11 FGM	4	6	8	44-13/16	47-9/16	9	11-1/2	34
	Total Stages		Add 9-1/2 for each additional stage over 4 stages					
12 FCM	3	8	8	40	42-3/4	7	13	34
	Total Stages		Add 10-3/4 for each additional stage over 3 stages					

DISCHARGE HEADS & BASEPLATES											
Size		A	B	C	F	G	H	N	S	T	U
12	6 SDH	23	11-1/2	8-1/2	1-1/2	3/4	1	1-3/8	21-1/4	17-5/32	14-1/2
16-1/2	6 LAD	23	10-1/4	10	1-1/2	1	7/8	1-1/16	24	21	17-1/8

CLARKE JU6H DIESEL ENGINES												
MODEL	AA	AB	AF	AN	CA	CB	CC	CD	CE	CS	HD	HP
JU6HUF30	32	15	5	1 x 2	46	N/A	36	45.9	.88	15.2	20.35	45.8
JU6HUF50	32	15	5	1 x 2	46	N/A	36	45.9	.88	15.2	20.35	45.8
JU6HUF60	32	15	5	1 x 2	46	N/A	36	48	.88	15.2	20.35	45.8

Customer:				P.O.#:				Dwg.#			
Job Name:						<input type="checkbox"/> UL <input type="checkbox"/> FM <input type="checkbox"/> CUL			Flange Rating: <input type="checkbox"/> 125# <input type="checkbox"/> 250#		
Model:			# Stages:		GPM:		PSI:		Max. Lift:		
Engine Mfg.:			Engine Model:			RPM:		HP:			
Certified By:					Date:						

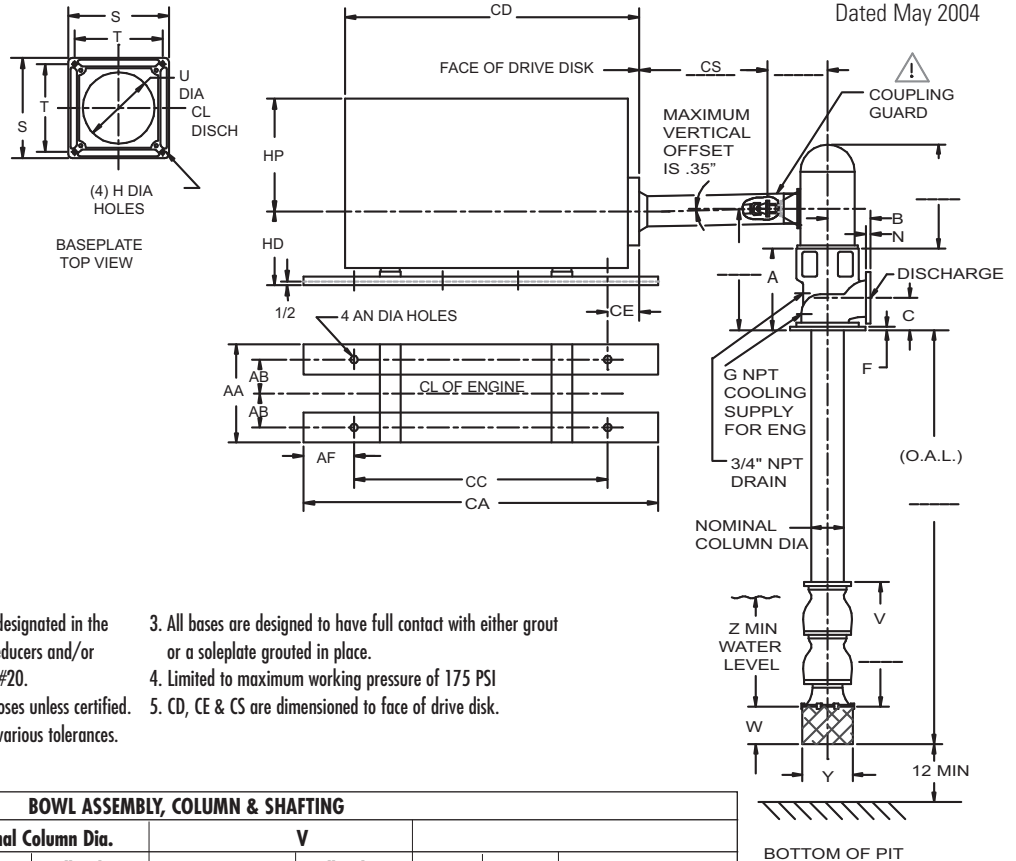
AURORA FIRE PUMPS

DIESEL DRIVEN VERTICAL TURBINE

Section **914** Page **209**

Date **September 2011**

Supersedes Section 914 Page 209
Dated May 2004



GEAR		
Mfg.	Ratio	Model

NOTES

- Flange ratings are either 125# or 250# and will be designated in the certification block below for each order submittal. Reducers and/or increasers may be required to meet NFPA Pamphlet #20.
- Not for construction, installation, or application purposes unless certified. Dimensions shown are typical and may vary due to various tolerances.
- All bases are designed to have full contact with either grout or a soleplate grouted in place.
- Limited to maximum working pressure of 175 PSI
- CD, CE & CS are dimensioned to face of drive disk.

BOWL ASSEMBLY, COLUMN & SHAFTING								
Size & Model	# of Stages	Nominal Column Dia.		V		W	Y	Z
		UL & FM Water Lube Only	All Others	UL & FM Water Lube Only	All Others			
13 FGH	4	8	10	61-13/16	65-1/4	11	13	34
	Total Stages		Add 13-1/16 for each additional stage over 4 stages					
15 FGH	3	10	12	54-1/16	57-7/16	13	14-3/4	34 - 2000 GPM 46 - 2500 GPM
	Total Stages		Add 14-1/2 for each additional stage over 3 stages					

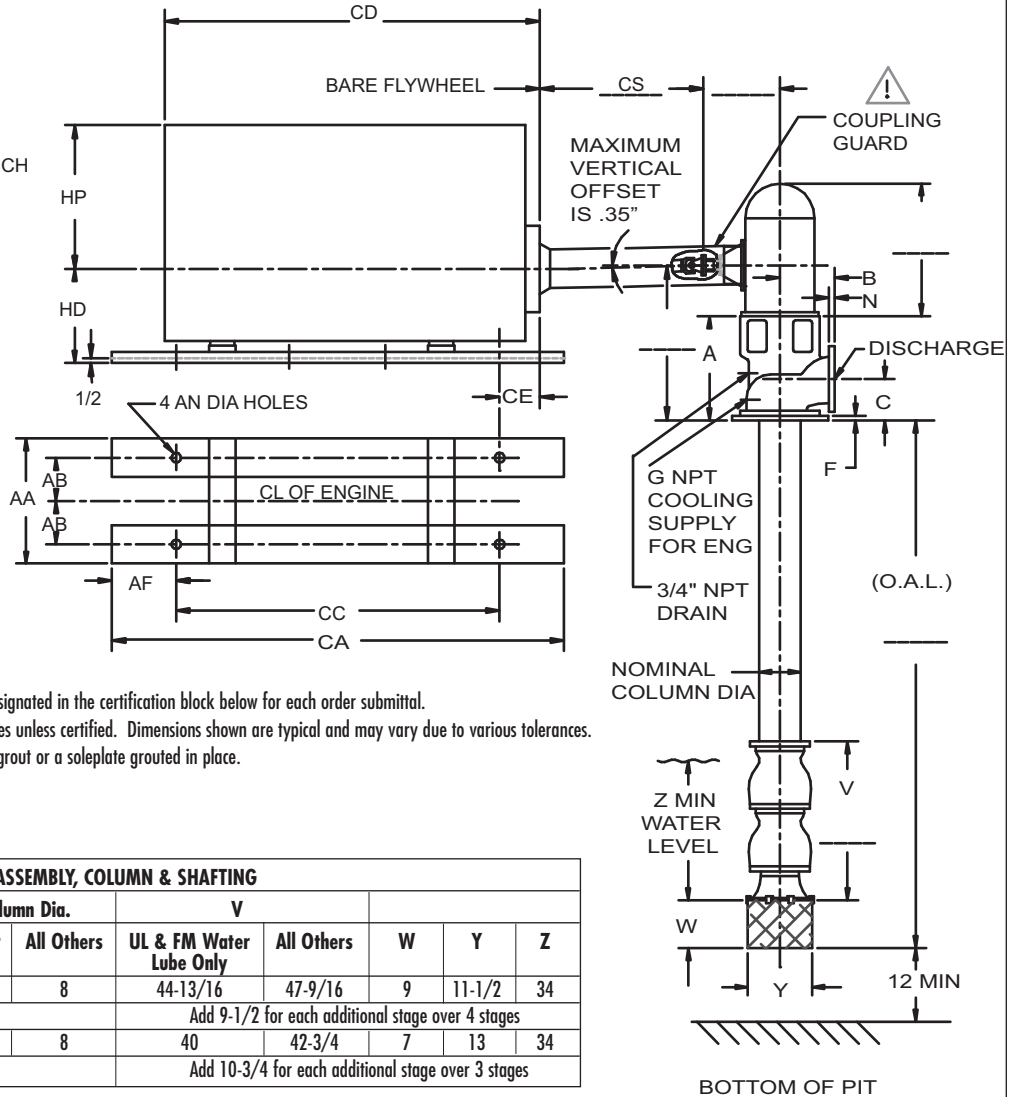
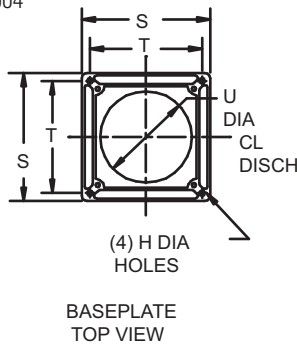
DISCHARGE HEADS & BASEPLATES											
Size		A	B	C	F	G	H	N	S	T	U
16-1/2	8 SDC	23	11-3/8	10	1-1/2	1	7/8	1-3/16	24	21	17-1/8
16-1/2	8 LAD	23	11-3/8	10	1-1/2	1	7/8	1-3/16	24	21	17-1/8
20	10 LAD	23	13-7/8	10-1/2	1-1/2	1	7/8	1-1/4	24	21	17-1/8

CLARKE JU6H DIESEL ENGINES												
MODEL	AA	AB	AF	AN	CA	CB	CC	CD	CE	CS	HD	HP
JU6HUF30	32	15	5	1 x 2	46	N/A	36	45.9	.88	15.2	20.35	45.8
JU6HUF50	32	15	5	1 x 2	46	N/A	36	45.9	.88	15.2	20.35	45.8
JU6HUF60	32	15	5	1 x 2	46	N/A	36	48	.88	15.2	20.35	45.8

Customer:				P.O.#:				Dwg.#			
Job Name:						<input type="checkbox"/> UL <input type="checkbox"/> FM <input type="checkbox"/> CUL			Flange Rating: <input type="checkbox"/> 125# <input type="checkbox"/> 250#		
Model:			# Stages:			GPM:			PSI:		Max. Lift:
Engine Mfg.:			Engine Model:				RPM:		HP:		
Certified By:						Date:					

AURORA FIRE PUMPS

DIESEL DRIVEN VERTICAL TURBINE



GEAR		
Mfg.	Ratio	Model

- NOTES**
1. Flange ratings are either 125# or 250# and will be designated in the certification block below for each order submittal.
 2. Not for construction, installation, or application purposes unless certified. Dimensions shown are typical and may vary due to various tolerances.
 3. All bases are designed to have full contact with either grout or a soleplate grouted in place.
 4. CD, CE & CS are dimensioned to bare flywheel.

BOWL ASSEMBLY, COLUMN & SHAFTING								
Size & Model	# of Stages	Nominal Column Dia.		V		W	Y	Z
		UL & FM Water Lube Only	All Others	UL & FM Water Lube Only	All Others			
11 FGM	4	6	8	44-13/16	47-9/16	9	11-1/2	34
	Total Stages		Add 9-1/2 for each additional stage over 4 stages					
12 FCM	3	8	8	40	42-3/4	7	13	34
	Total Stages		Add 10-3/4 for each additional stage over 3 stages					

DISCHARGE HEADS & BASEPLATES											
Size		A	B	C	F	G	H	N	S	T	U
BD	DISCH	23	10-1/4	10	1-1/2	1	7/8	1-1/16	24	21	17-1/8
16-1/2	6 LAD										

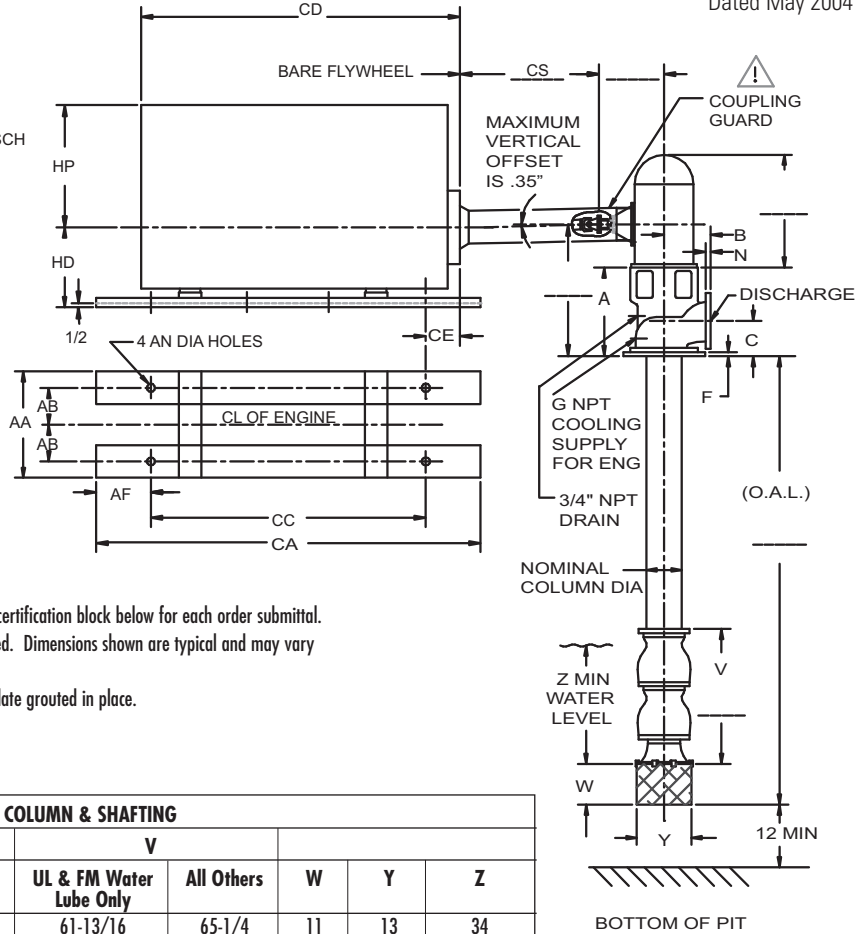
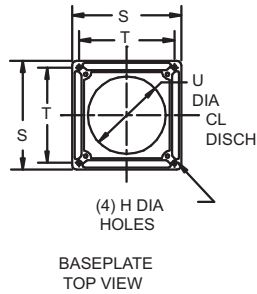
CLARKE JW6H DIESEL ENGINES												
MODEL	AA	AB	AF	AN	CA	CB	CC	CD	CE	CS	HD	HP
JW6HUF30	36	17	5	1 x 2	46	N/A	36	47.52	2.9	14.1	24	50.11
JW6HUF50	36	17	5	1 x 2	46	N/A	36	47.52	2.9	14.1	24	50.11
JW6HUF60	36	17	5	1 x 2	46	N/A	36	47.52	2.9	14.1	24	50.11

Customer:				P.O.#:				Dwg.#			
Job Name:						<input type="checkbox"/> UL <input type="checkbox"/> FM <input type="checkbox"/> CUL			Flange Rating: <input type="checkbox"/> 125# <input type="checkbox"/> 250#		
Model:			# Stages:		GPM:		PSI:		Max. Lift:		
Engine Mfg.:				Engine Model:			RPM:		HP:		
Certified By:					Date:						

AURORA FIRE PUMPS

DIESEL DRIVEN VERTICAL TURBINE

Section **914** Page **211**
 Date **September 2011**
 Supersedes Section 914 Page 211
 Dated May 2004



GEAR		
Mfg.	Ratio	Model

NOTES

1. Flange ratings are either 125# or 250# and will be designated in the certification block below for each order submittal.
2. Not for construction, installation, or application purposes unless certified. Dimensions shown are typical and may vary due to various tolerances.
3. All bases are designed to have full contact with either grout or a soleplate grouted in place.
4. Limited to maximum working pressure of 175 PSI
5. CD, CE & CS are dimensioned to bare flywheel.

BOWL ASSEMBLY, COLUMN & SHAFTING								
Size & Model	# of Stages	Nominal Column Dia.		V		W	Y	Z
		UL & FM Water Lube Only	All Others	UL & FM Water Lube Only	All Others			
13 FGH	4	8	10	61-13/16	65-1/4	11	13	34
	Total Stages		Add 13-1/16 for each additional stage over 4 stages					
14 FGM	3	8	10	44-15/16	49-1/4	13	14-3/4	36
	Total Stages		Add 12-3/16 for each additional stage over 3 stages					

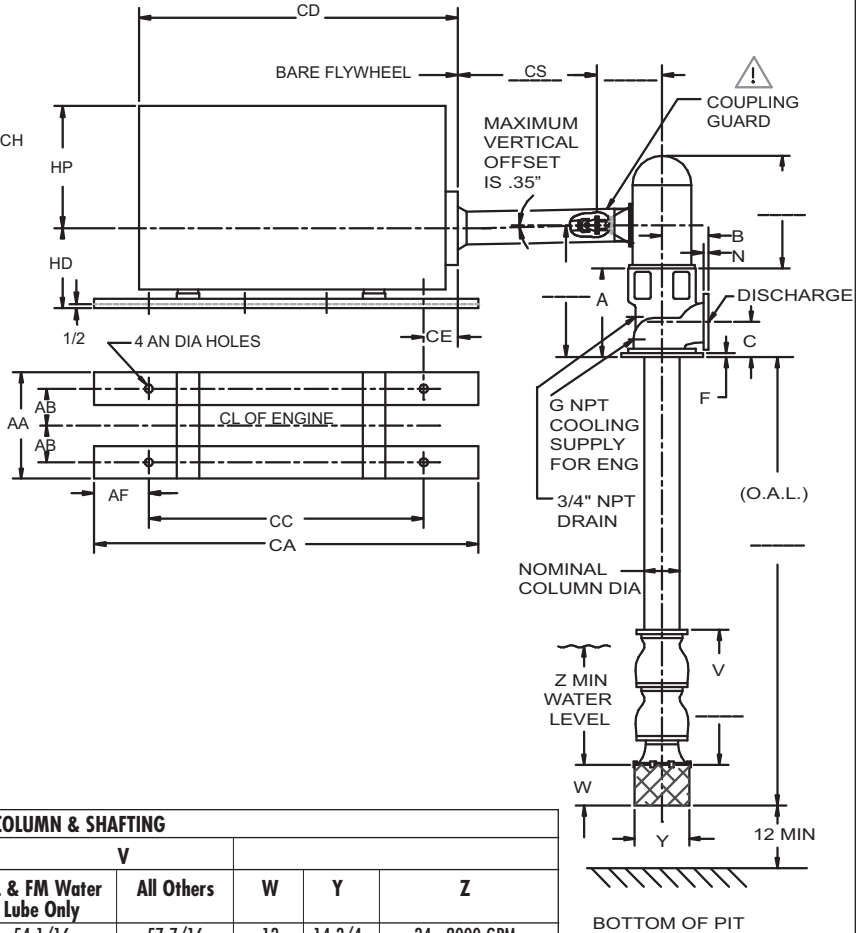
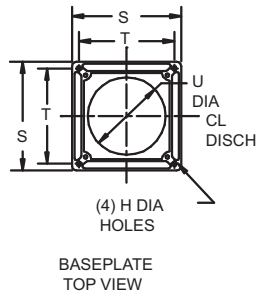
DISCHARGE HEADS & BASEPLATES											
Size		A	B	C	F	G	H	N	S	T	U
16-1/2	8 SDC	23	11-3/8	10	1-1/2	1	7/8	1-3/16	24	21	17-1/8
16-1/2	8 LAD	23	11-3/8	10	1-1/2	1	7/8	1-3/16	24	21	17-1/8
20	10 LAD	23	13-7/8	10-1/2	1-1/2	1	7/8	1-1/4	24	21	17-1/8

CLARKE JW6H DIESEL ENGINES												
MODEL	AA	AB	AF	AN	CA	CB	CC	CD	CE	CS	HD	HP
JW6HUF30	36	17	5	1 x 2	46	N/A	36	49.4	4.6	19.7	24	50.1
JW6HUF40	36	17	5	1 x 2	46	N/A	36	49.4	4.6	19.7	24	50.1
JW6HUF50	36	17	5	1 x 2	46	N/A	36	49.4	4.6	19.7	24	50.1
JW6HUF60	36	17	5	1 x 2	46	N/A	36	49.4	4.6	19.7	24	50.1

Customer:				P.O.#:				Dwg.#			
Job Name:						<input type="checkbox"/> UL <input type="checkbox"/> FM <input type="checkbox"/> CUL			Flange Rating: <input type="checkbox"/> 125# <input type="checkbox"/> 250#		
Model:		# Stages:		GPM:		PSI:		Max. Lift:			
Engine Mfg.:			Engine Model:			RPM:		HP:			
Certified By:				Date:							

AURORA FIRE PUMPS

DIESEL DRIVEN VERTICAL TURBINE



GEAR		
Mfg.	Ratio	Model

NOTES

1. Flange ratings are either 125# or 250# and will be designated in the certification block below for each order submittal.
2. Not for construction, installation, or application purposes unless certified. Dimensions shown are typical and may vary due to various tolerances.
3. All bases are designed to have full contact with either grout or a soleplate grouted in place.
4. CD, CE & CS are dimensioned to bare flywheel.

BOWL ASSEMBLY, COLUMN & SHAFTING								
Size & Model	# of Stages	Nominal Column Dia.		V		W	Y	Z
		UL & FM Water Lube Only	All Others	UL & FM Water Lube Only	All Others			
15 FGH	3	10	12	54-1/16	57-7/16	13	14-3/4	34 - 2000 GPM 46 - 2500 GPM
	Total Stages		Add 14-1/2 for each additional stage over 3 stages					
19 FGM	2	12	N/A	47-5/8	N/A	12	23-1/2	32
	Total Stages		Add 17-5/8 for each additional stage over 2 stages					

DISCHARGE HEADS & BASEPLATES											
Size		A	B	C	F	G	H	N	S	T	U
BD	DISCH										
20	10 LAD	23	13-7/8	10-1/2	1-1/2	1	7/8	1-1/4	24	21	17-1/8
24-1/2	12 SDH	28	17	13-1/2	2	3/4	1-1/8	1-7/8	32-1/4	26-5/32	24-1/2

CLARKE JW6H DIESEL ENGINES												
MODEL	AA	AB	AF	AN	CA	CB	CC	CD	CE	CS	HD	HP
JW6HUF30	36	17	5	1 x 2	46	N/A	36	49.4	4.6	19.7	24	50.1
JW6HUF40	36	17	5	1 x 2	46	N/A	36	49.4	4.6	19.7	24	50.1
JW6HUF50	36	17	5	1 x 2	46	N/A	36	49.4	4.6	19.7	24	50.1
JW6HUF60	36	17	5	1 x 2	46	N/A	36	49.4	4.6	19.7	24	50.1

Customer:				P.O.#:				Dwg.#			
Job Name:						<input type="checkbox"/> UL <input type="checkbox"/> FM <input type="checkbox"/> CUL			Flange Rating: <input type="checkbox"/> 125# <input type="checkbox"/> 250#		
Model:			# Stages:			GPM:			PSI:		Max. Lift:
Engine Mfg.:			Engine Model:				RPM:		HP:		
Certified By:					Date:						

THIS PAGE LEFT INTENTIONALLY BLANK

THIS PAGE LEFT INTENTIONALLY BLANK

THIS PAGE LEFT INTENTIONALLY BLANK

Section **914** Page **216**
Date **April 2006**

Supersedes Section 914 Page 216
Dated May 1, 2004

THIS PAGE LEFT INTENTIONALLY BLANK

THIS PAGE LEFT INTENTIONALLY BLANK

Section **914** Page **218**
Date **April 2006**

Supersedes Section 914 Page 218
Dated May 1, 2004

THIS PAGE LEFT INTENTIONALLY BLANK

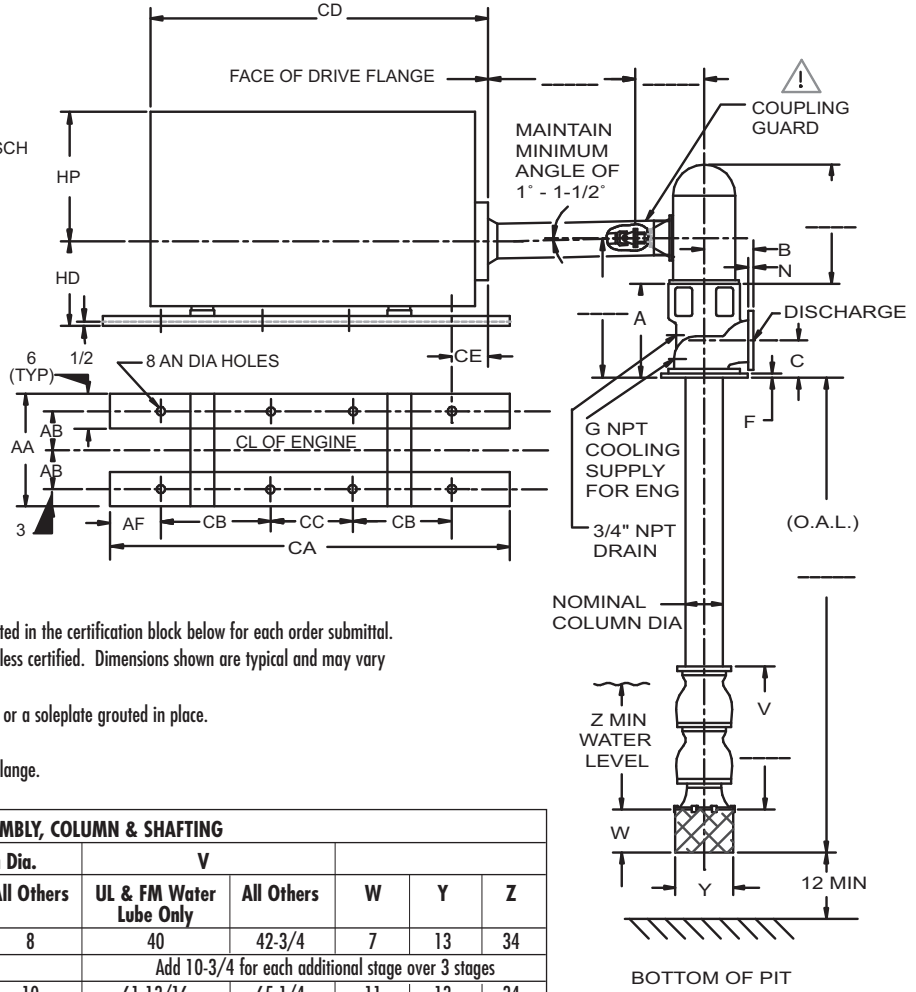
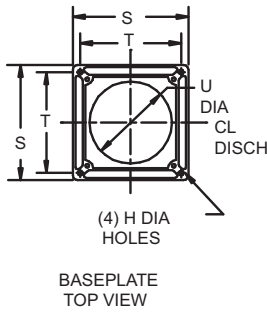
THIS PAGE LEFT INTENTIONALLY BLANK

THIS PAGE LEFT INTENTIONALLY BLANK

THIS PAGE LEFT INTENTIONALLY BLANK

AURORA FIRE PUMPS

DIESEL DRIVEN VERTICAL TURBINE



GEAR		
Mfg.	Ratio	Model

- NOTES**
1. Flange ratings are either 125# or 250# and will be designated in the certification block below for each order submittal.
 2. Not for construction, installation, or application purposes unless certified. Dimensions shown are typical and may vary due to various tolerances.
 3. All bases are designed to have full contact with either grout or a soleplate grouted in place.
 4. Limited to maximum working pressure of 175 PSI.
 5. CD, CD & shafting length are dimensioned to face of drive flange.

BOWL ASSEMBLY, COLUMN & SHAFTING								
Size & Model	# of Stages	Nominal Column Dia.		V		W	Y	Z
		UL & FM Water Lube Only	All Others	UL & FM Water Lube Only	All Others			
12 FCM	3	8	8	40	42-3/4	7	13	34
	Total Stages		Add 10-3/4 for each additional stage over 3 stages					
13 FGH	4	8	10	61-13/16	65-1/4	11	13	34
	Total Stages		Add 13-1/16 for each additional stage over 4 stages					

DISCHARGE HEADS & BASEPLATES											
Size		A	B	C	F	G	H	N	S	T	U
BD	DISCH										
16-1/2	6 LAD	23	10-1/4	10	1-1/2	1	7/8	1-1/16	24	21	17-1/8
16-1/2	8 SDC	23	11-3/8	10	1-1/2	1	7/8	1-3/16	24	21	17-1/8
16-1/2	8 LAD	23	11-3/8	10	1-1/2	1	7/8	1-3/16	24	21	17-1/8

CATERPILLAR DIESEL ENGINES											
MODEL	AA	AB	AF	AN	CA	CB	CC	CD	CE	HD	HP
3406DIT	28-1/2	10-1/4	10-3/4	13/16	76	16-3/4	16-3/4	78-5/8	15-1/8	19-1/2	34-3/4

Customer:				P.O.#:				Dwg.#			
Job Name:						<input type="checkbox"/> UL <input type="checkbox"/> FM <input type="checkbox"/> CUL			Flange Rating: <input type="checkbox"/> 125# <input type="checkbox"/> 250#		
Model:		# Stages:		GPM:		PSI:		Max. Lift:			
Motor Mfg.:		HP:	Frame:		Ph:	Hz:	V:	End.:			
Certified By:					Date:						

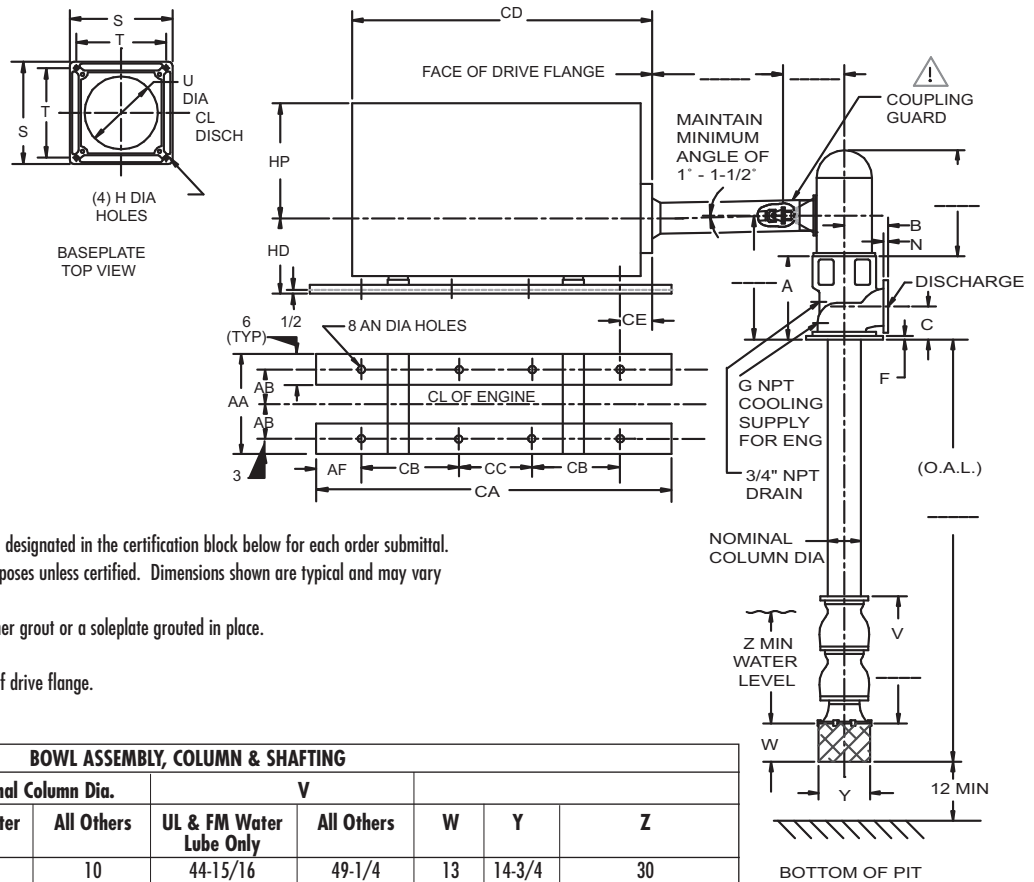
AURORA FIRE PUMPS

DIESEL DRIVEN VERTICAL TURBINE

Section **914** Page **223**

Date **February 2008**

Supersedes Section 914 Page 223
Dated May 2004



GEAR		
Mfg.	Ratio	Model

NOTES

1. Flange ratings are either 125# or 250# and will be designated in the certification block below for each order submittal.
2. Not for construction, installation, or application purposes unless certified. Dimensions shown are typical and may vary due to various tolerances.
3. All bases are designed to have full contact with either grout or a soleplate grouted in place.
4. Limited to maximum working pressure of 175 PSI.
5. CD, CE & shafting length are dimensioned to face of drive flange.
6. When used with a 17FGM, U=19 (483).

BOWL ASSEMBLY, COLUMN & SHAFTING								
		Nominal Column Dia.		V				
Size & Model	# of Stages	UL & FM Water Lube Only	All Others	UL & FM Water Lube Only	All Others	W	Y	Z
14 FGM	3	8	10	44-15/16	49-1/4	13	14-3/4	30
	Total Stages		Add 12-3/16 for each additional stage over 3 stages					
15 FGH	3	10	12	54-1/16	57-7/16	13	14-3/4	34 - 2000 GPM 46 - 2500 GPM
	Total Stages		Add 14-1/2 for each additional stage over 3 stages					
17 FGM	3	12	N/A	49-7/8	N/A	9	18	28
	Total Stages		Add 13-1/2 for each additional stage over 3 stages					

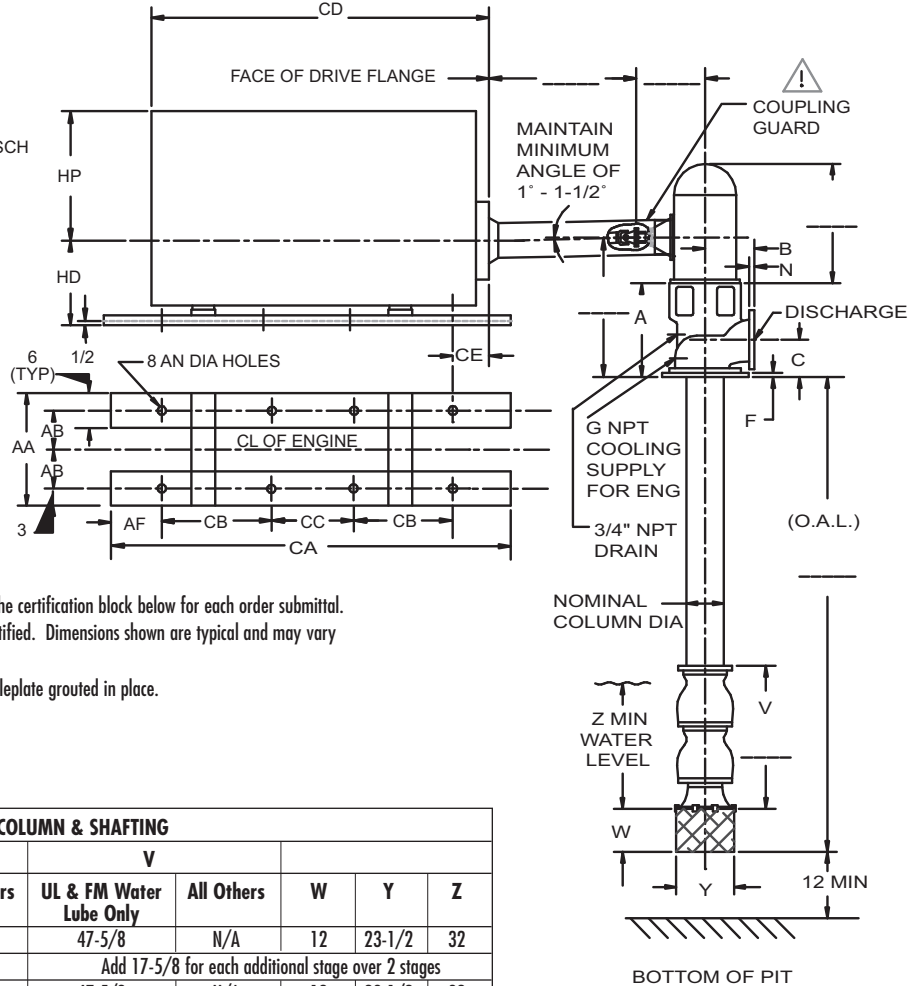
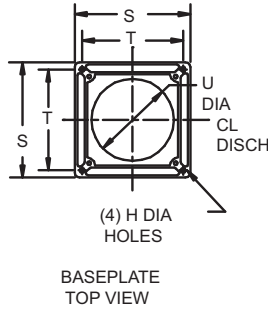
DISCHARGE HEADS & BASEPLATES											
Size											
BD	DISCH	A	B	C	F	G	H	N	S	T	U
16-1/2	8 SDC	23	11-3/8	10	1-1/2	1	7/8	1-3/16	24	21	17-1/8 (4)
16-1/2	8 LAD	23	11-3/8	10	1-1/2	1	7/8	1-3/16	24	21	17-1/8
20	10 LAD	23	13-7/8	10-1/2	1-1/2	1	7/8	1-1/4	24	21	17-1/8 (6)

CATERPILLAR DIESEL ENGINES											
MODEL	AA	AB	AF	AN	CA	CB	CC	CD	CE	HD	HP
3406DIT	28-1/2	10-1/4	10-3/4	13/16	76	16-3/4	16-3/4	78-5/8	15-1/8	19-1/2	32-3/4
3406DITA	28-1/2	10-1/4	10-3/4	13/16	76	16-3/4	16-3/4	78-5/8	15-1/8	19-1/2	35-1/8

Customer:				P.O.#:				Dwg.#			
Job Name:						<input type="checkbox"/> UL <input type="checkbox"/> FM <input type="checkbox"/> CUL			Flange Rating: <input type="checkbox"/> 125# <input type="checkbox"/> 250#		
Model:			# Stages:			GPM:		PSI:		Max. Lift:	
Motor Mfg.:			HP:		Frame:			Ph:		Hz: V: Encl.:	
Certified By:						Date:					

AURORA FIRE PUMPS

DIESEL DRIVEN VERTICAL TURBINE



GEAR		
Mfg.	Ratio	Model

NOTES

1. Flange ratings are either 125# or 250# and will be designated in the certification block below for each order submittal.
2. Not for construction, installation, or application purposes unless certified. Dimensions shown are typical and may vary due to various tolerances.
3. All bases are designed to have full contact with either grout or a soleplate grouted in place.
4. CD, CD & shafting length are dimensioned to face of drive flange.

BOWL ASSEMBLY, COLUMN & SHAFTING								
Size & Model	# of Stages	Nominal Column Dia.		V		W	Y	Z
		UL & FM Water Lube Only	All Others	UL & FM Water Lube Only	All Others			
19 FGM	2	12	N/A	47-5/8	N/A	12	23-1/2	32
	Total Stages		Add 17-5/8 for each additional stage over 2 stages					
19 FGH	2	12	N/A	47-5/8	N/A	12	23-1/2	32
	Total Stages		Add 17-5/8 for each additional stage over 2 stages					

DISCHARGE HEADS & BASEPLATES											
Size		A	B	C	F	G	H	N	S	T	U
BD	DISCH	28	17	13-1/2	2	3/4	1-1/8	1-7/8	32-1/2	26-5/32	24-1/2

CATERPILLAR DIESEL ENGINES											
MODEL	AA	AB	AF	AN	CA	CB	CC	CD	CE	HD	HP
3406DITA	28-1/2	10-1/4	10-3/4	13/16	76	16-3/4	16-3/4	78-5/8	15-1/8	19-1/2	35-1/8
3408DITA	RTF	RTF	RTF	RTF	RTF	RTF	RTF	RTF	RTF	RTF	RTF
3412DIT	RTF	RTF	RTF	RTF	RTF	RTF	RTF	RTF	RTF	RTF	RTF
3412DITA	RTF	RTF	RTF	RTF	RTF	RTF	RTF	RTF	RTF	RTF	RTF

Customer:				P.O.#:				Dwg.#			
Job Name:						<input type="checkbox"/> UL <input type="checkbox"/> FM <input type="checkbox"/> CUL			Flange Rating: <input type="checkbox"/> 125# <input type="checkbox"/> 250#		
Model:			# Stages:			GPM:		PSI:		Max. Lift:	
Motor Mfg.:			HP:		Frame:		Ph:		Hz:	V:	Encl.:
Certified By:						Date:					