

AutoCAD LT 2014 Preview Guide



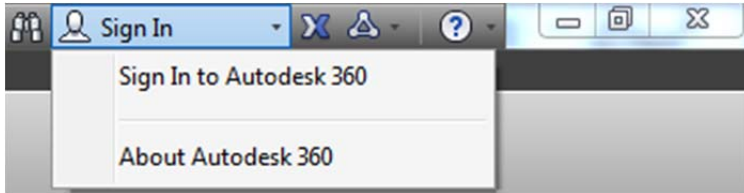
Capture your 2D concepts with the connected design tools of Autodesk® AutoCAD LT® drafting software. Use powerful documentation tools to produce more precise technical drawings that you can efficiently edit, repurpose, and share with confidence. Help ensure accurate dimensions and technical details that faithfully convey the specifics of your design. With the genuine DWG™ technology in AutoCAD LT, you can produce drawing files that are compatible with other AutoCAD®-based software and utilize sharing options for smoother workflow integration with project stakeholders and colleagues. With a focus on drafting productivity, AutoCAD LT is built for effective design documentation.

Table of Contents

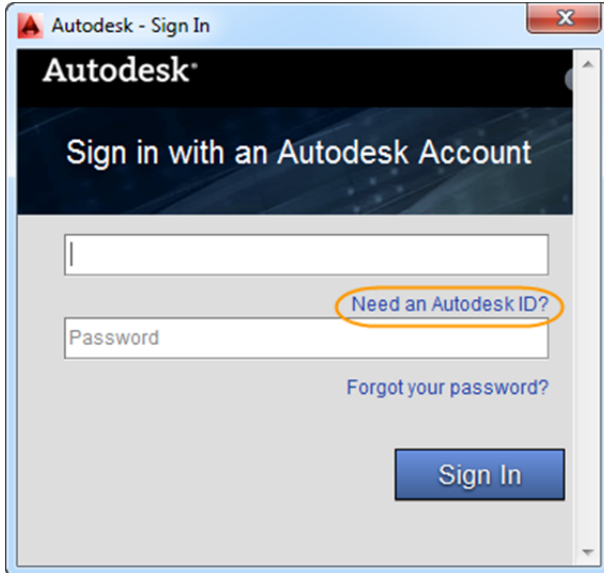
- User Interaction 4
 - Help system..... 4
 - Command line 5
 - File tabs 8
 - Layer management 10
 - Xref enhancements 11
- Documentation 12
 - Geographic location 12
 - Drawing enhancements 18
 - Annotation enhancements 18
- Connection 19
 - Design Feed..... 19
- Customization 21
 - Operating systems 21

Introduction

AutoCAD LT continues its transformation into a connected design application, accessing the power of cloud, social, and mobile. With AutoCAD LT 2014 you can work across platforms, collaborate with project stakeholders, and bring the power of AutoCAD LT with you wherever you go. Sign into your Autodesk® account to share and access documents online.



If you do not yet have an Autodesk account, choose Need an Autodesk ID from the Sign In dialog box and provide the necessary information. It's free*!



Take further advantage of the power of connection with access to command line Internet search, Live Map Data, and integrated Design Feed.

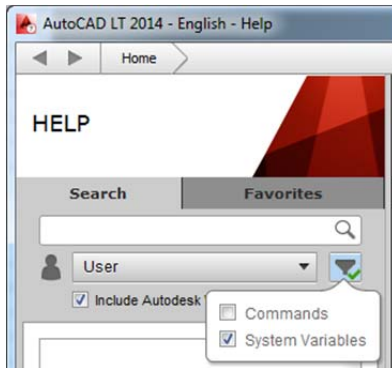
* Free products and services are subject to the terms and conditions of the end-user license and services agreement that accompanies them.

User Interaction

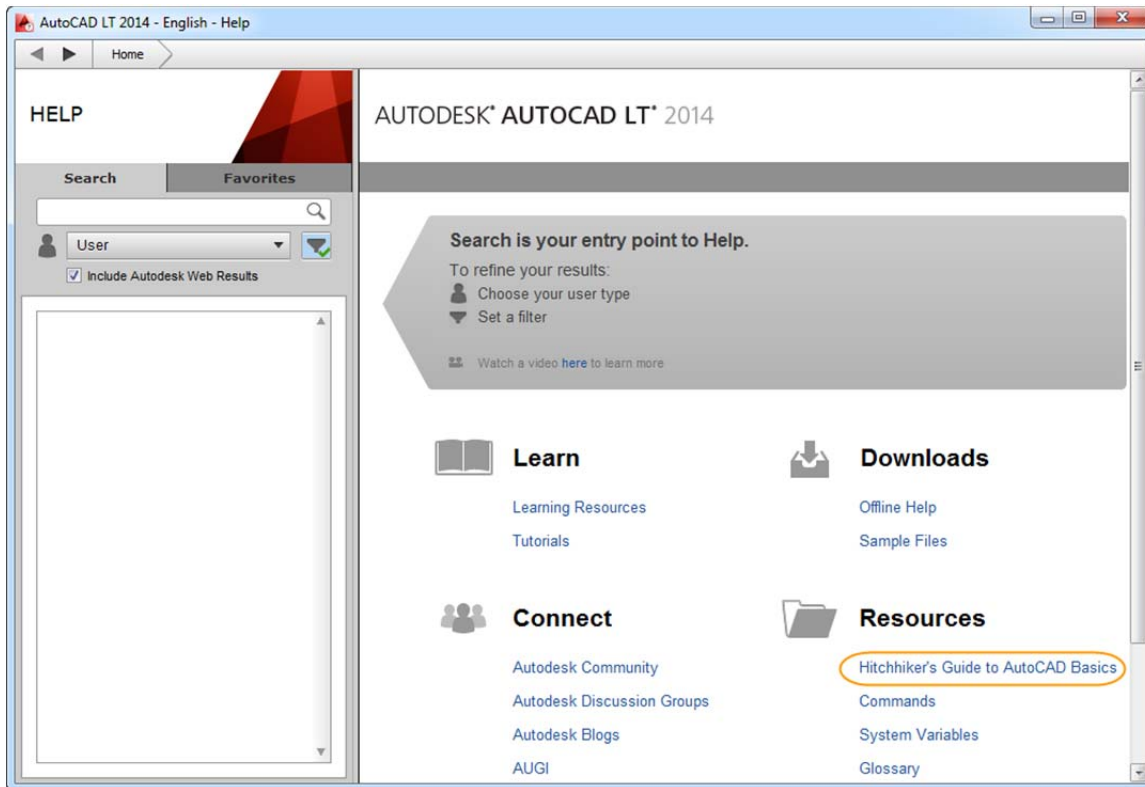
Help system

AutoCAD LT 2014 software includes enhancements to the Help system.

New search filters enable you to narrow your search results based on the type of user. For example, if you choose User, you can filter on commands or system variables.



The Hitchhiker's Guide to AutoCAD Basics is included in the Resources section and has been updated for AutoCAD LT 2014.



The AutoCAD LT Help System also offers improved access to online Help, particularly when using proxy servers.

Command line

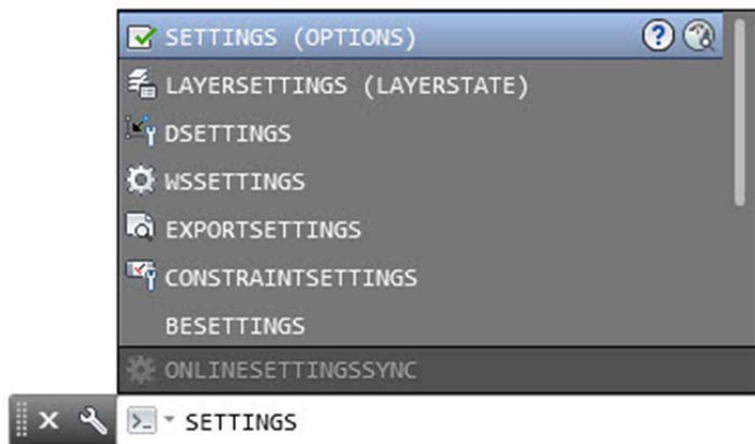
The Command Line interface is enhanced in AutoCAD LT 2014 to provide smarter, more efficient access to commands and system variables. And you can use the command line to find other content, such as hatch patterns and Internet help.

AutoCorrect

The command line in AutoCAD LT 2014 supports AutoCorrect. If you mistype a command, instead responding with “Unknown command,” AutoCAD autocorrects to the most relevant and valid AutoCAD command. For example, if you accidentally type TABEL, the TABLE command is automatically launched.

AutoComplete

AutoComplete command entry is enhanced in AutoCAD LT 2014 to support mid-string search. For example, if you type SETTING on the command line, the suggestion list displays commands containing the word SETTING anywhere within it, not just at the beginning.



Adaptive suggestions

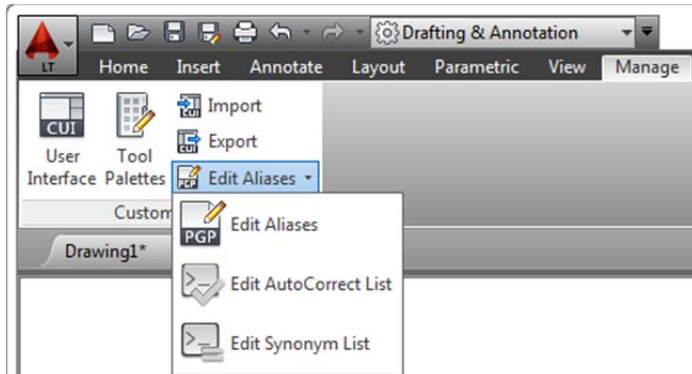
Commands in the suggestion list are initially displayed in the order of their usage, based on general customer data. As you continue to use AutoCAD LT 2014, the order of commands in the suggestion list will adapt to your own usage habits. The command usage data is stored in the profile and adapts to each user.

Synonym suggestions

The command line has a built in synonym list. Enter a word at the command line and it will return a command if a match is found in the synonym list. For example, if you enter Symbol, AutoCAD finds the INSERT command so you can insert a block. Or if you enter Round, AutoCAD finds the FILLET command so you can add a fillet to a corner.

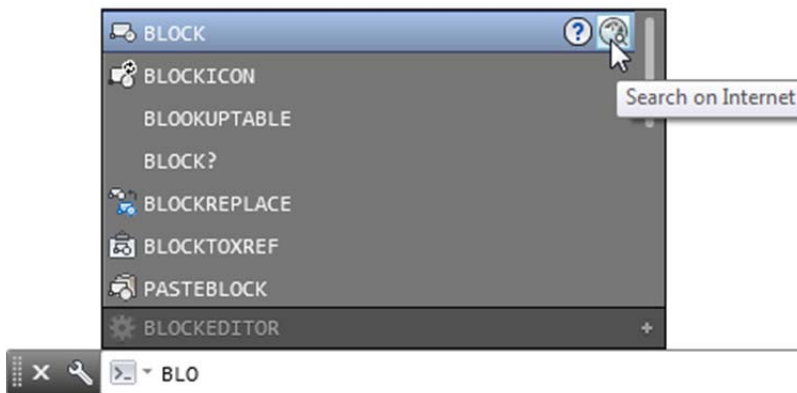


You can add your own words to the AutoCorrect and Synonym lists using the Edit Aliases tool from the Manage ribbon tab.



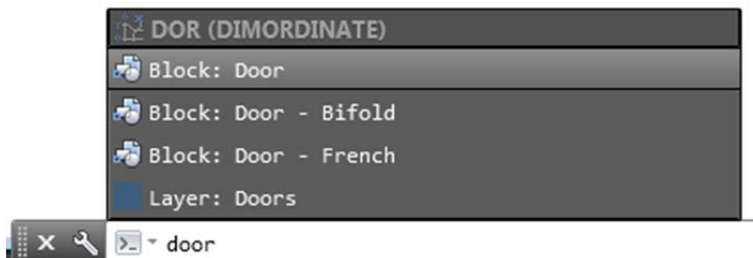
Internet search

In AutoCAD LT 2014, you can quickly search for more information on a command or system variable in the suggestion list. Move the cursor over the command or system variable in the list and choose the Help or Internet icons to search for relevant information. The term AutoCAD is automatically prepended to the current term for searching the Internet.



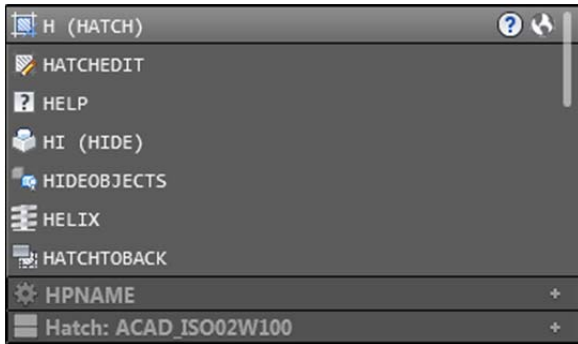
Content

In AutoCAD LT 2014, you can use the command line to access layers, blocks, hatch patterns/gradients, text styles, dimension styles, and visual styles. For example, if you enter Door at the command line and the current drawing has a block definition with the name Door, you can quickly insert it right from the suggestion list.



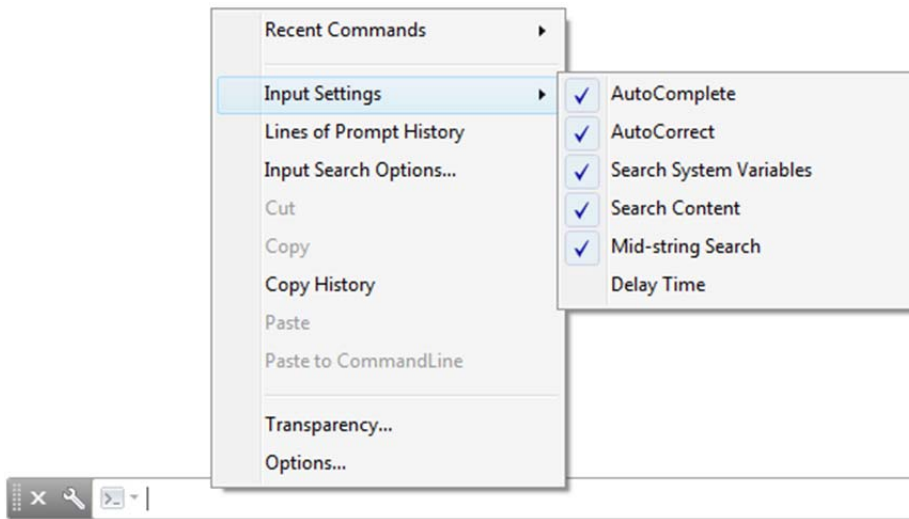
Categories

To make the suggestion list easier to navigate, system variables and other content are organized into expandable categories. You can expand a category to see the results or press the Tab key to cycle through each category.

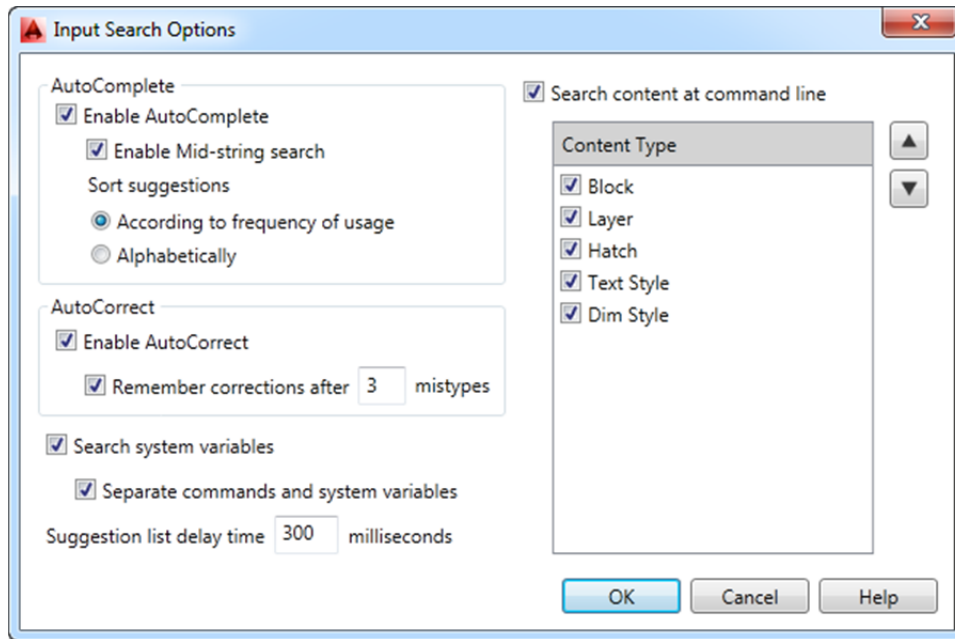


Input settings

You can customize the behavior of the command line using controls in the Input Settings menu when you right-click on the command line. In addition to the previous options to enable AutoComplete and search for system variables, you can enable AutoCorrect, Search Content, and Mid-string Search. All of these options are turned on by default.



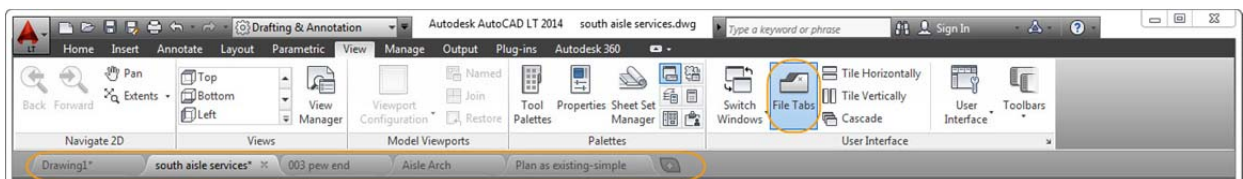
Another right-click option provides access to the new Input Search Options dialog box.



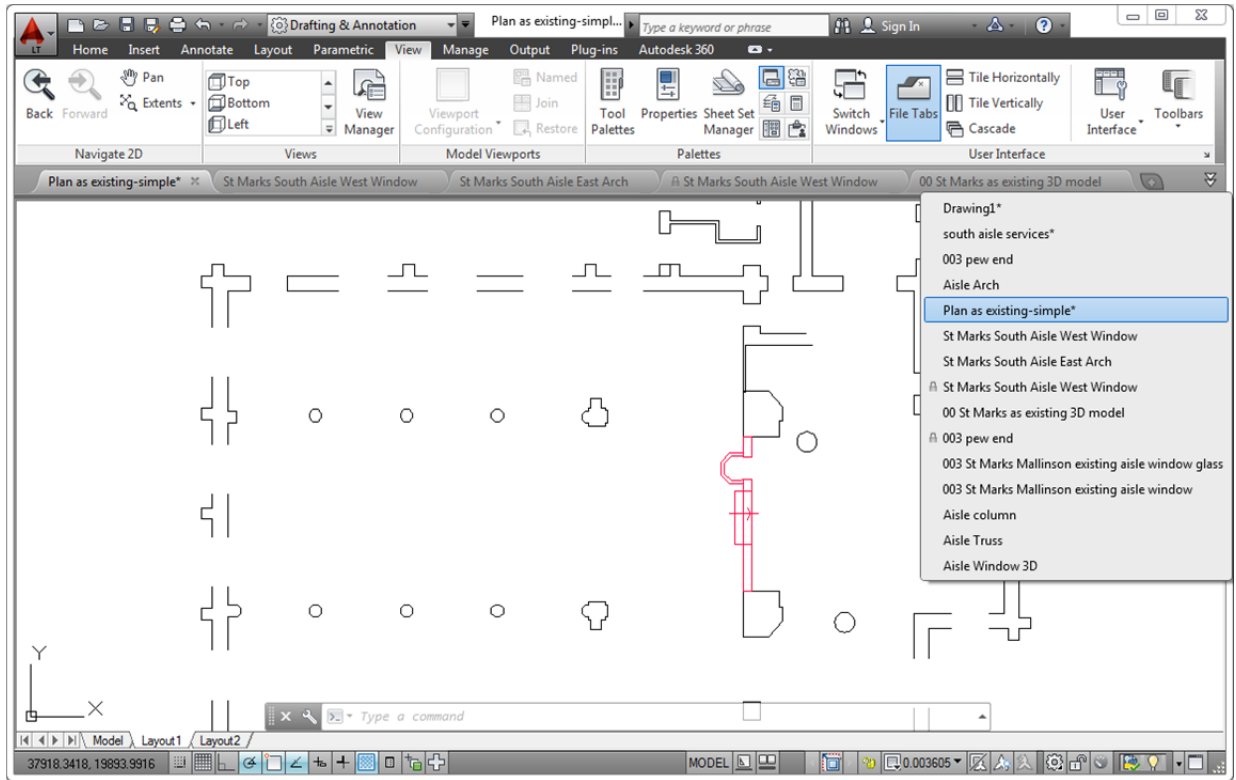
Much of the new command line functionality, including AutoCorrect, mid-string search, and adaptive suggestions, is also available using dynamic input.

File tabs

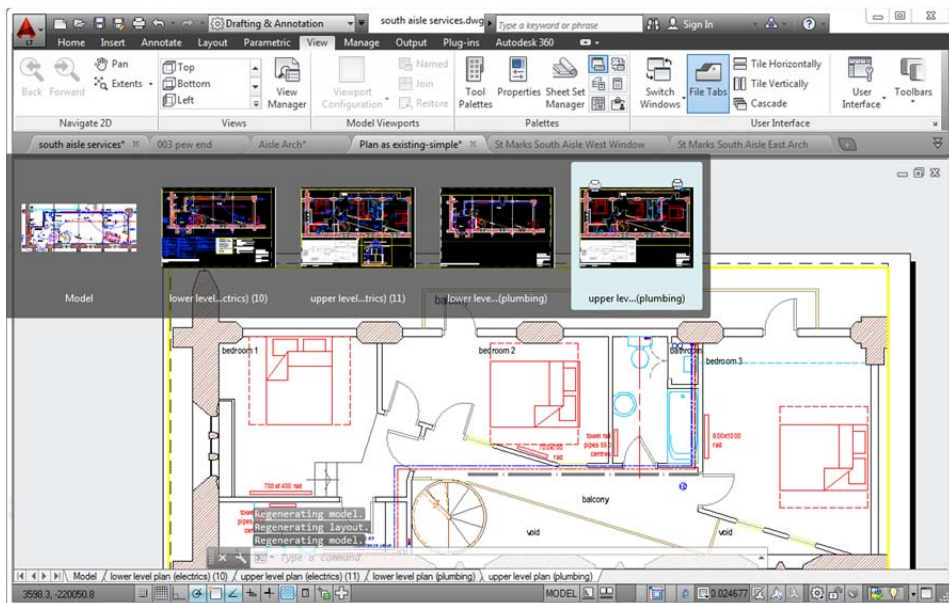
The AutoCAD LT 2014 release offers drawing tabs as a fast and visual way to switch between open drawings or to create new ones. You can turn the file tabs bar on or off using the File Tabs control on the View ribbon tab. When File Tabs are turned on, a tab for each open drawing is displayed at the top of the drawing area.



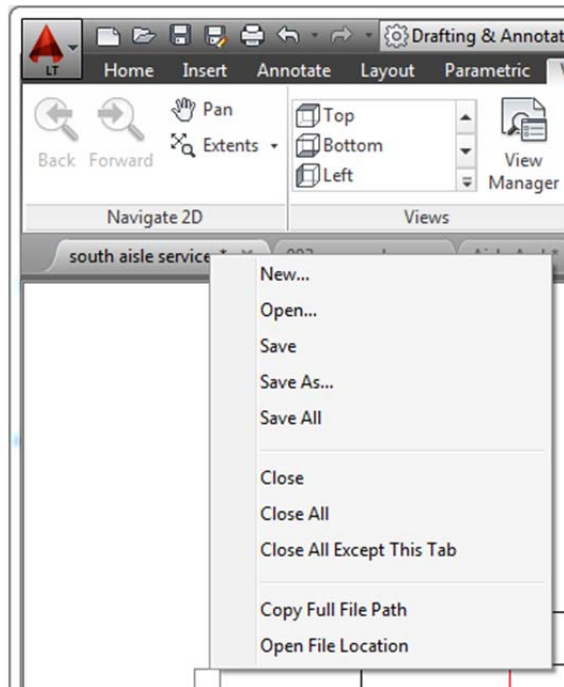
File tabs are displayed in the order they were opened. You can drag tabs to change their order. If there is not enough room for all the file tabs to display across the area, an overflow menu at the right end of the file tabs bar provides access to the additional files.



A lock icon on a tab indicates that the file is open as read-only, and an asterisk indicates that the file has been modified since its last save. When you pass the cursor over a file tab, preview images of the model and layouts are displayed. If you pass the cursor over one of the preview images, the corresponding model or layout is temporarily displayed in the drawing area and Plot and Publish tools are accessible from the preview image.



The right-click menu for file tabs enables you to create, open, save, and close files—including the ability to close all open files except the one on which you right-clicked. You can also copy the full file path to the clipboard or open the file location in Windows® Internet Explorer®.



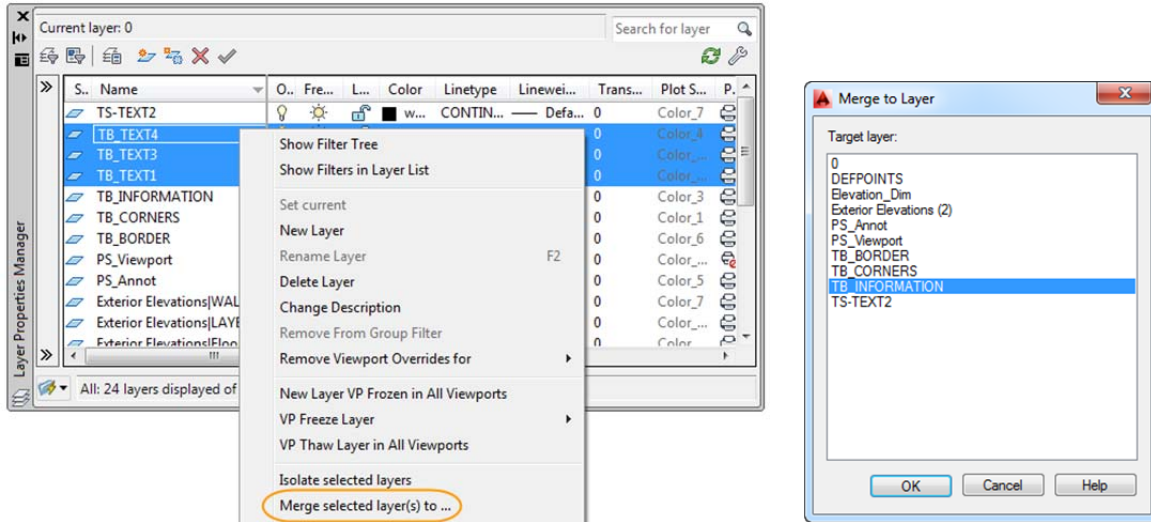
A Plus (+) icon to the right of the drawing tabs enables you to easily create new drawings, automatically adding their tabs as they're created.



Layer management

The number of layers displayed on the ribbon has been increased. Layers are now displayed using natural ordered sort. For example, the layer names 1, 4, 25, 6, 21, 2, 10 are sorted as 1, 2, 4, 6, 10, 21, 25 instead of as 1, 10, 2, 25, 21, 4, 6.

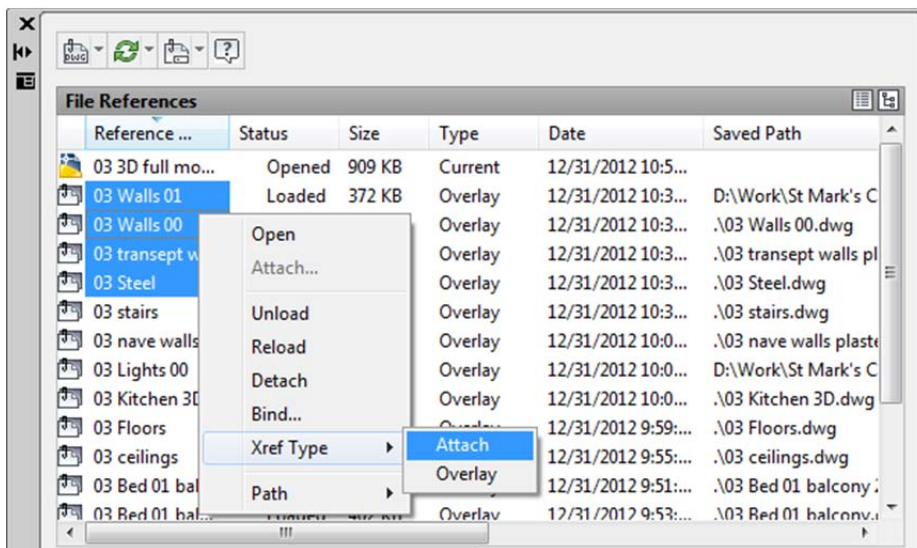
A new Merge option in the Layer Manager enables you to select one or more layers from the layer list and merge the objects from those layers onto a different layer. The original layers are automatically purged from the drawing.



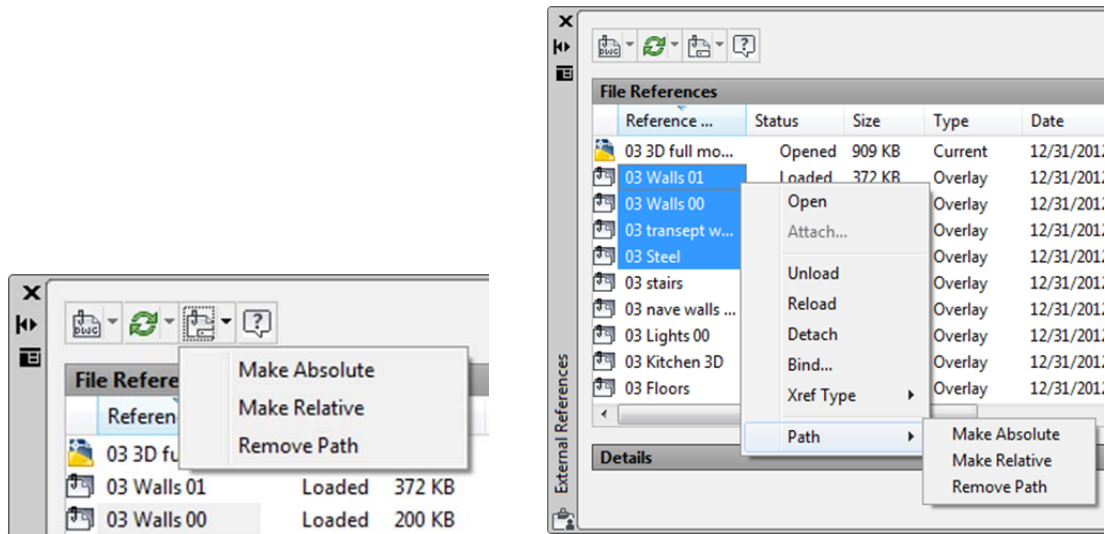
Xref enhancements

The display of linetypes and layers from externally referenced drawings is enhanced in AutoCAD LT 2014. Xref linetypes are not displayed in the linetype list of the ribbon or Properties palette. Xref layers are still displayed in the ribbon so you can control their visibility, but they are not displayed in the Properties palette.

You can easily change the attachment type for an xref between Attach and Overlay by double-clicking in the Type column. A new option in the right-click menu enables you to change the xref type for multiple selected xrefs at the same time.



The External References palette includes new tools to easily change the path of selected xrefs between Absolute and Relative. You can also remove the path completely. The `-XREF` command includes a new `PATHTYPE` option that enables you to automate these path changes through scripting.



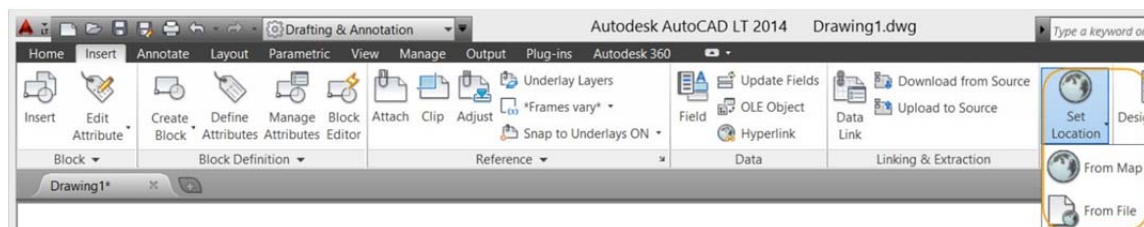
Documentation

Geographic location

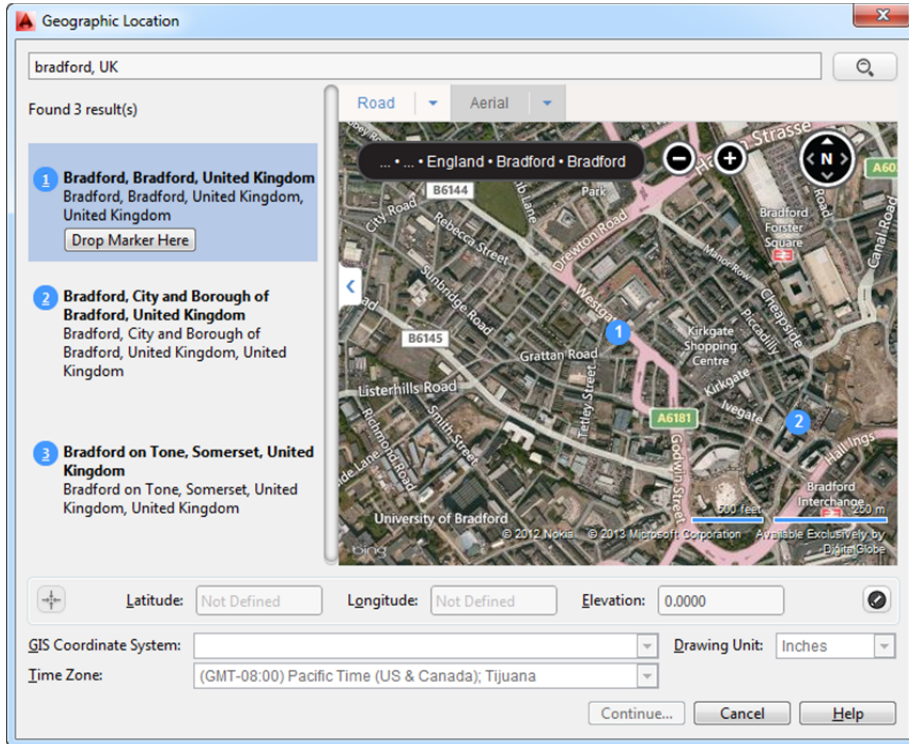
Support for geographic location functionality is significantly enhanced in AutoCAD LT 2014. It includes the same Coordinate System Library as Autodesk® AutoCAD® Map 3D software and the Live Map Data tool.

There are many benefits to defining a location in your drawing. When you import geolocated data into a geolocated drawing, AutoCAD transforms the data based on the drawing's geographic location. You can see your design within the context of its location and if you render the model, it will have the correct sun angle. If you export the drawing to a map service like Google® Earth, it will automatically display at the correct location. When you insert georeferenced images or blocks into your georeferenced drawing, they are automatically placed in the correct location and at the correct scale. For example, imagine a large project where multiple designers are working separately on the same design, such as a housing project. If each designer uses the same coordinate system, all the drawings will insert at their appropriate locations when combined into a single file. You can mark specific point of interest in your drawings, knowing that those points correspond to logical geographic locations. And if you have a GPS device enabled on your computer you can see your current position in the drawing, and you can even mark positions as you walk around. For example, landscape architects can visit a site and take notes about the surroundings by marking them on the drawing.

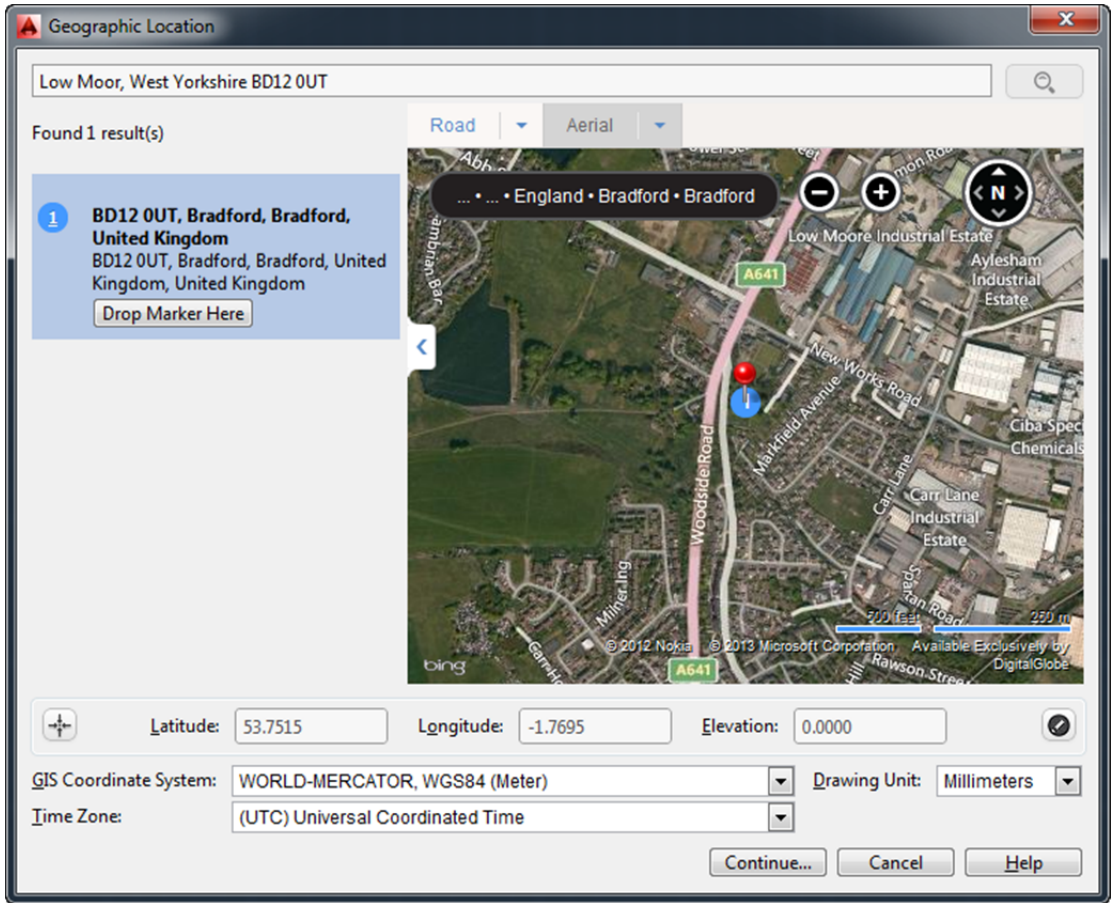
You can set a geographic location in your drawing using the Set Location tool on the Insert ribbon tab. Choose to set the location from a map or by selecting a KML or KMZ file.



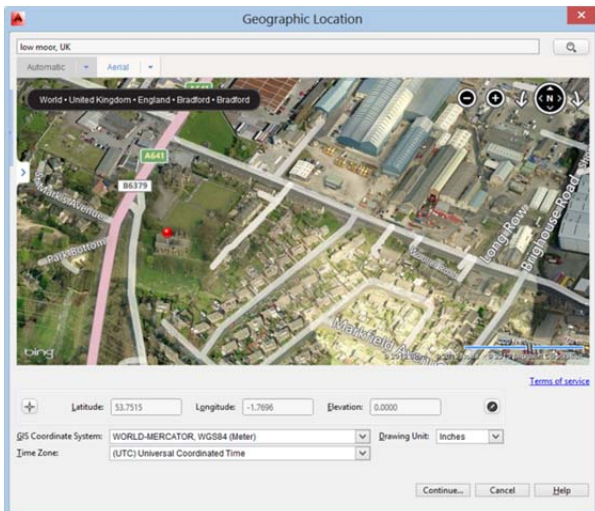
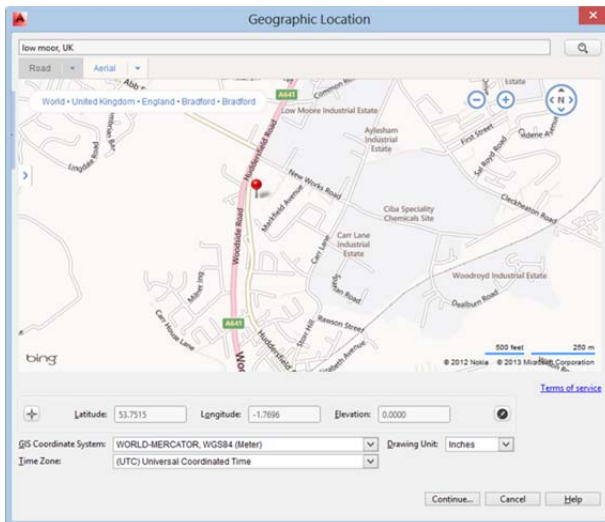
Live Map Data is automatically available from AutoCAD LT 2014 when you are signed into your Autodesk account. When specifying a geographic location from a map, you can search for an address or latitude and longitude. If multiple results are found, you can click on each one in the results list to view the corresponding map and you can display the map as road or aerial data.



When you find the correct location, you can drop a marker to select it. A pin is placed on the map and corresponding latitude, longitude, and time zone are automatically applied. You can move the pin, updating the latitude and longitude automatically. An icon to the right of the elevation unlocks the latitude and longitude for manual editing.

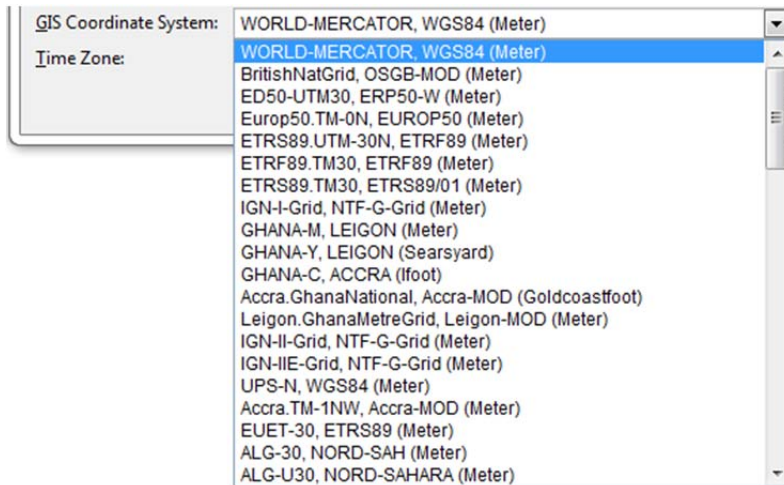


Collapse the Results panel to maximize the map. You can display a standard road map or automatically display the best map style as you zoom.

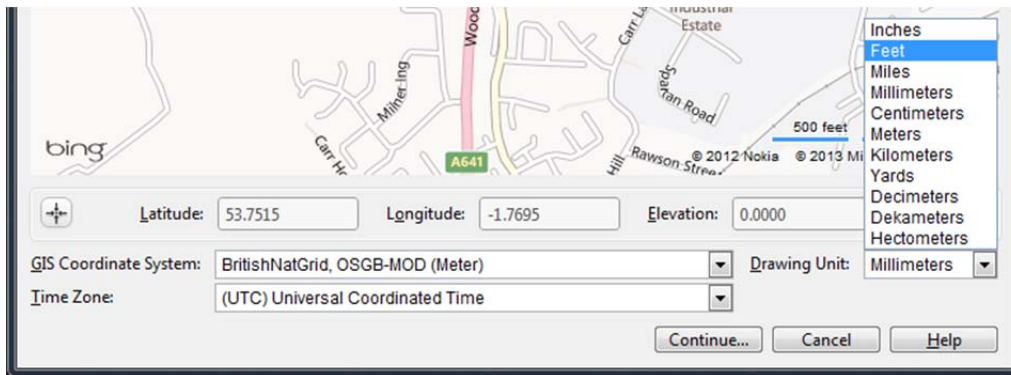


AutoCAD LT 2014 assigns World Mercator as the default coordinate system, or you can choose from the list of filtered coordinate systems. The coordinate system list is filtered based on the entered latitude and longitude, so it only displays the coordinate systems relevant to the specified area. To get more accurate

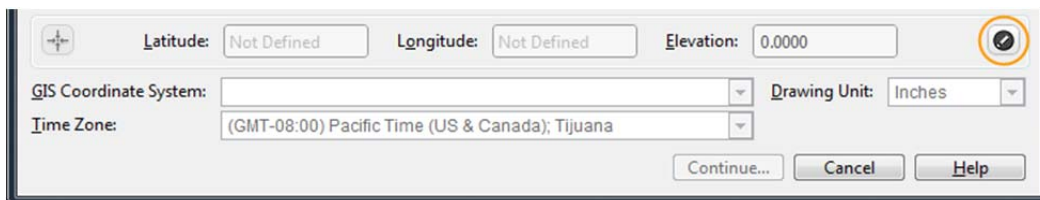
results, it is recommended to use a local coordinate system rather than a global coordinate system. Local coordinate systems are considered more accurate because they align more closely with the earth's surface in that locality, in comparison to an earth-centric datum, e.g., World Mercator. Often, more than one coordinate system may cover the location you are interested in. As a general rule of thumb, the coordinate system with its datum closest to that location is considered to be the most accurate.



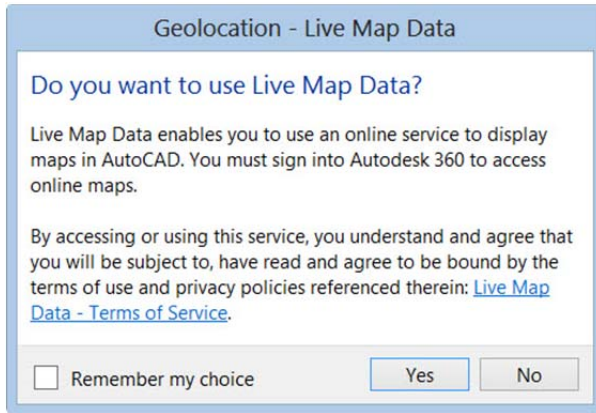
The coordinate system defines the scale of the map. The current drawing unit is automatically displayed in the Geographic Location dialog box or you can choose from a list of standard units. The inserted map is automatically scaled appropriately for the specified drawing units.



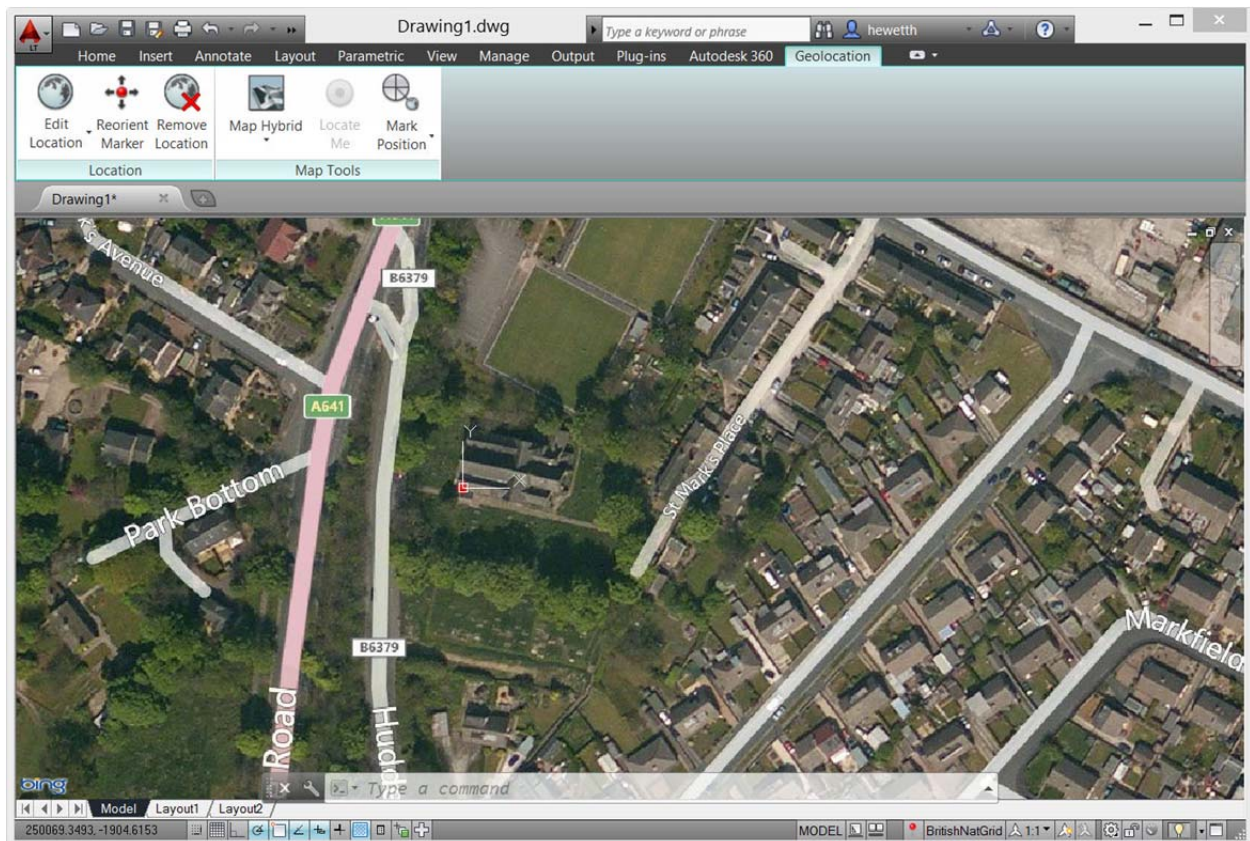
Live Map Data is only available when you are working online. If you are working offline or choose not to use Live Map Data, no map is displayed, but you can manually enter the latitude and longitude by unlocking them for editing. After you accept the latitude and longitude, the relevant coordinate systems are automatically filtered.



If you choose not to use Live Map Data, it will no longer be available to you in the current session of AutoCAD. If you close AutoCAD LT and begin a new session, you can, once again, choose to use Live Map Data.

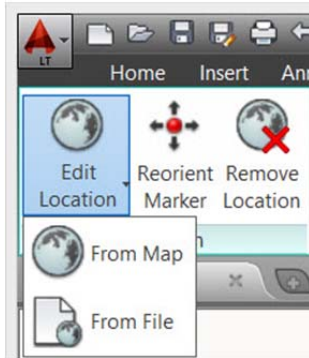


When a map is applied to a drawing it is always displayed below drawing geometry. Whether you apply a geographic location using a map, entering latitude and longitude, or selecting a KML/KMZ file, the geolocation marker is displayed in the drawing at a point you specify and a new Geolocation tab is added to the ribbon.

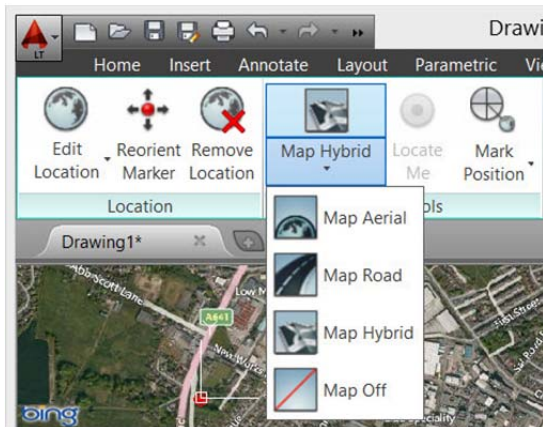


The Geolocation ribbon tab includes tools for modifying the geolocation and map display. You can specify a different location using Live Map Data or by selecting a KML or KMZ file. Pick a new location

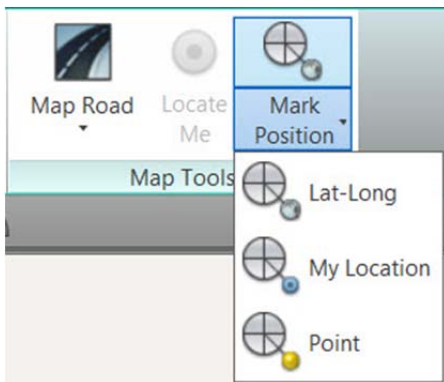
and north direction to reorient the geographic marker. Or completely remove the location data and assigned coordinate system from the drawing.



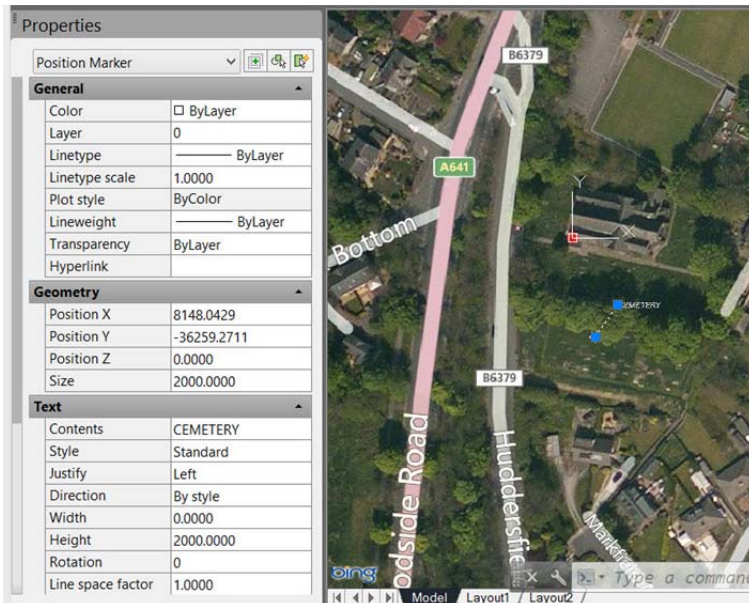
Easily switch between an aerial, road, or hybrid map, or turn off the map display while maintaining the geographic location and coordinate system data.



If you are working on a GPS-enabled laptop, you can use the Locate Me tool to identify your current location in the map. You can mark positions in the drawing by entering lat-long data, either by using your current location (for GPS enabled devices) or by picking points.



For each position, you can enter text to describe the position. The new GEOMARKPOSITIONSIZE system variable controls the initial size of the marker. You can modify the size, contents, and other properties of selected position markers using the Properties palette.



Drawing enhancements

AutoCAD LT 2014 includes a variety of drawing enhancements to help you produce drawings more efficiently.

Arcs

Easily draw an arc in either direction by holding the Ctrl key to switch directions as you draw.

Polylines

The #11 AUGI wishlist request for the ability to fillet a polyline to itself, creating a closed polyline, is implemented in AutoCAD LT 2014.

Sheet sets

When creating a new sheet in a sheet set, the CreateDate field stored in the associated template (.dwt) displays the creation date of the new sheet rather than the creation date of the template file.

Plot styles

The CONVERTPSTYLES command enables you to convert the current drawing to either named or color-dependent plot styles. In AutoCAD LT 2014, the command is enhanced to support style names with spaces.

Annotation enhancements

Attributes

The default behavior for inserting blocks with attributes displays the dialog box. ATTDIA is set to 1.

Text

Single line text is enhanced to maintain the last justification setting until it's changed.

Dimensions

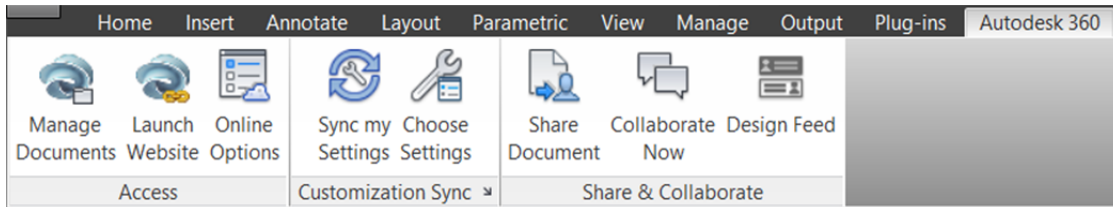
The new DIMCONTINUEMODE system variable provides you with more control when creating continued and baseline dimensions. When DIMCONTINUE is set to 0, the DIMCONTINUE and DIMBASELINE commands create dimensions based on the current dimension style. When set to 1, they apply the dimension style of the selected dimension.

Hatch

The Hatch tool on the ribbon maintains the previous method for selecting objects to hatch: Pick internal point or Select objects. The Undo option is added to the command line.

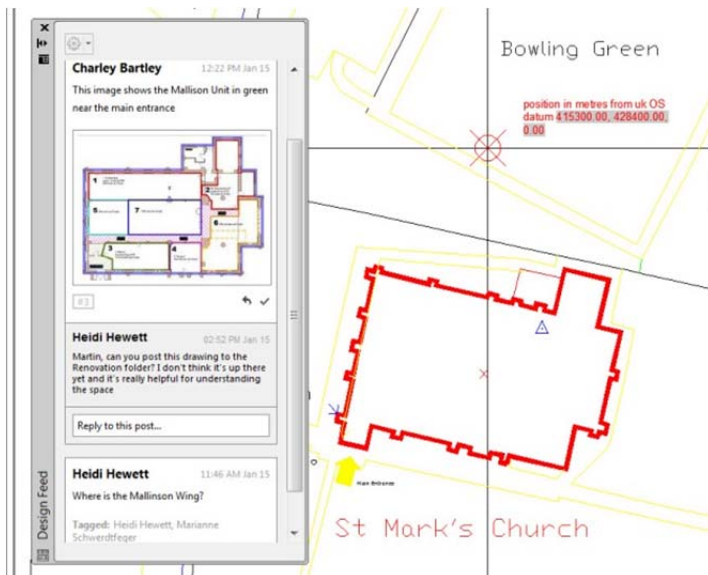
Connection

In AutoCAD LT 2014 the Online ribbon tab is renamed Autodesk® 360. It includes a new Manage Documents tool for easy access to the Autodesk 360 folder on your local machine, and the new Design Feed enables you to enter posts and images for a drawing that can be shared online.



Design Feed

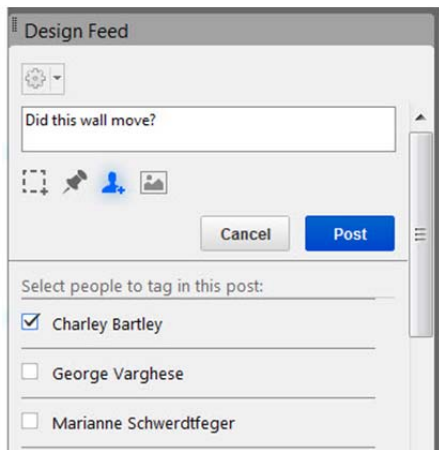
Design Feed, accessible from the Autodesk 360 ribbon tab, displays a palette in which you can enter text messages and attach images to be shared online with colleagues, clients, and consultants through Autodesk 360. Posts appear with related drawings on the desktop, on the web, and across mobile devices. Turn on Design Feed from the Autodesk 360 ribbon tab.



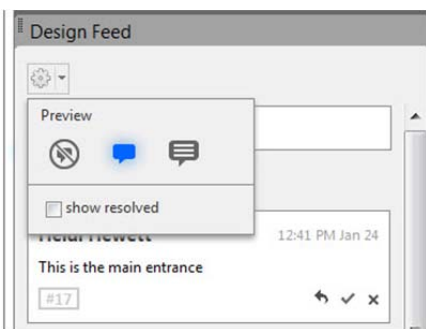
If you associate your message with a location or area within the drawing, a corresponding bubble is displayed. When you select a post in Design Feed, AutoCAD zooms to the corresponding part of the drawing. If you select a bubble in the drawing, the corresponding post is selected in Design Feed. The settings button on the Design Feed palette lets you control the display of the bubbles.



You can tag colleagues, clients, and consultants to notify them of your post; notifications will be sent to them by email and will also appear within AutoCAD LT.



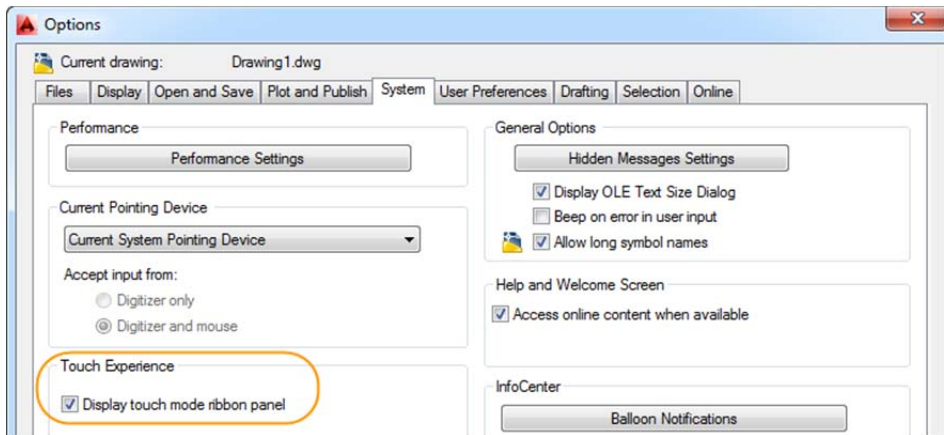
After you finish creating a post, it is saved to your Autodesk account with the drawing, along with any images that you attached. Using Autodesk 360, the people that you have authorized can view the drawing and its associated posts, and the people that you have tagged can post replies. When the questions in a post and its replies are no longer active, you can resolve the thread to hide it in the Design Feed palette.



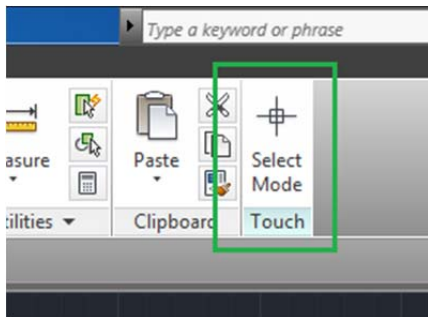
Customization

Operating systems

AutoCAD LT 2014 supports Windows® 8, Windows 7, and Windows XP. If you are using a Windows 8 touch-enabled device, you can benefit from smoother pan and zoom performance. A new control on the System tab of the Options dialog box displays a touch mode ribbon panel when a touch screen device is detected.



The Touch ribbon panel enables you cancel the current command and returns you to the Select/Command prompt.



Autodesk, AutoCAD, AutoCAD LT, Autodesk Inventor, Inventor, and Revit are registered trademarks or trademarks of Autodesk, Inc., and/or its subsidiaries and/or affiliates in the USA and/or other countries. All other brand names, product names, or trademarks belong to their respective holders. Autodesk reserves the right to alter product and services offerings, and specifications and pricing at any time without notice, and is not responsible for typographical or graphical errors that may appear in this document.

© 2013 Autodesk, Inc. All rights reserved.