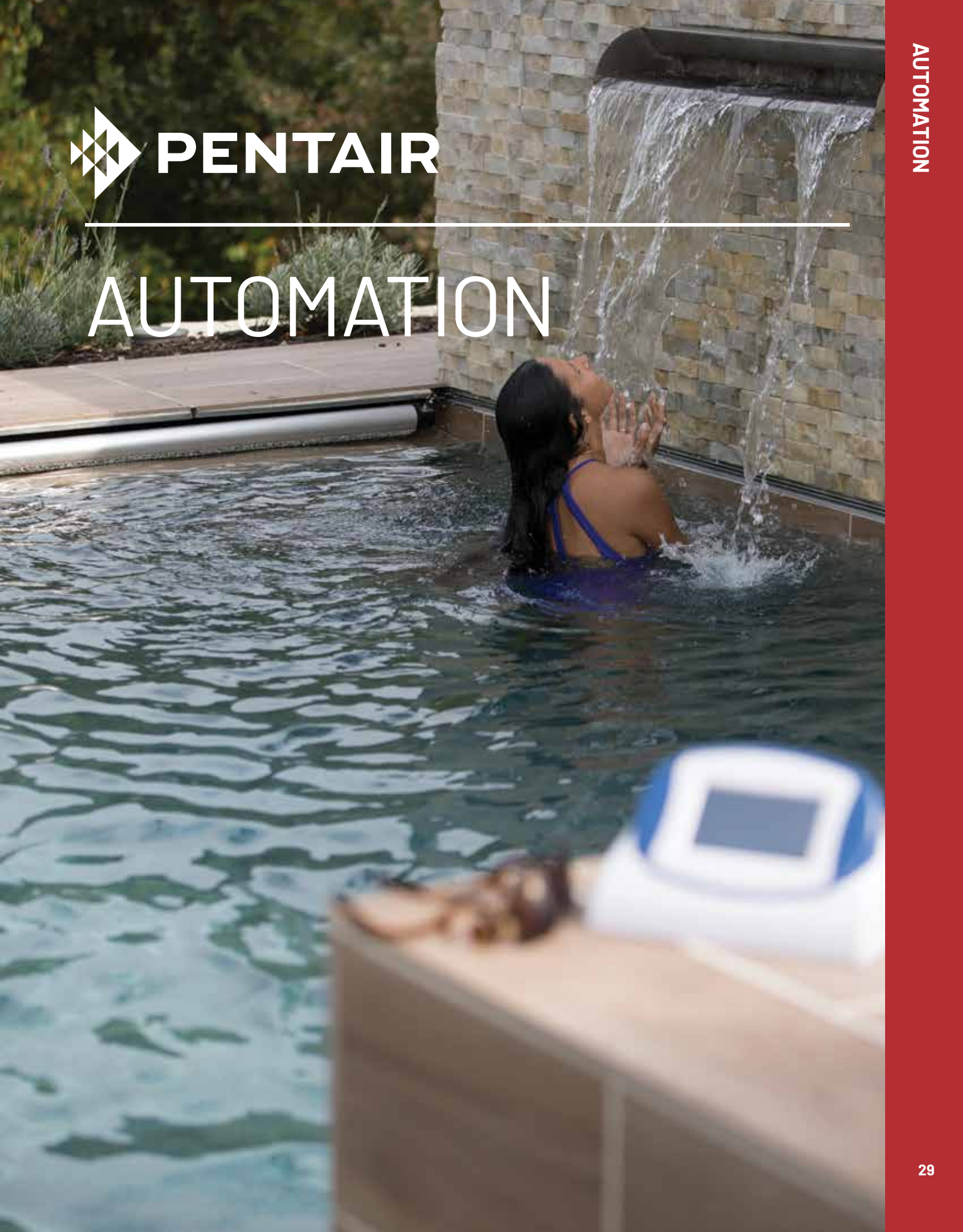




AUTOMATION



INTELLICENTER®

CONTROL SYSTEM FOR POOLS AND SPAS

TRADEGRADE



IntelliCenter is Pentair's highest-capacity and most service-friendly control system ever. Communication with this system can be done on a wide range of devices and platforms. Many important service, programming and monitoring tasks can be done without an on-location service call. Order popular bundled systems and receive everything in one box or build systems a la carte.

Featured Highlights

- Easy to program, with step-by-step, on screen instructions
- Color touchscreen interface displays intuitive instructions in clear text and rich colors
- Convenient control from inside and outside the home via outdoor and indoor control panels and wireless remotes
- Remote control from anywhere: Android® and iOS® device, Web browsers on Mac® and PC computers and voice command with smart speaker devices like Amazon Echo®

CALIFORNIA PROPOSITION 65 WARNING

⚠ **WARNING:** Cancer and Reproductive Harm.
 ⚠ **AVERTISSEMENT:** Peut Causer le Cancer et des Dommages au Système Reproducteur.
 ⚠ **ADVERTENCIA:** Cáncer y Daño Reproductivo.
www.p65warnings.ca.gov

Ordering Information

| Product | Country | Description | Includes IntelliChlor® Cell | Includes SCG Transformer | Includes two (2) IntelliValves |
|--|---------|---|-----------------------------|--------------------------|--------------------------------|
| BUNDLED SYSTEMS (COMMON LOAD AND PERSONALITY KIT) | | | | | |
| 523448 | USA | IntelliCenter System (Load Center with i5P Personality Kit) | No | No | No |
| 521903 | USA | IntelliCenter System (Load Center with i8PS Personality Kit) | Yes, IC40 | Yes | Yes |
| 521904 | USA | IntelliCenter System (Load Center with i8PS Personality Kit) | No | No | Yes |
| 521905 | USA | IntelliCenter System (Load Center with i5P Personality Kit) | Yes, IC40 | Yes | No |
| 521906 | USA | IntelliCenter System (Load Center with i5PS Personality Kit) | Yes, IC40 | Yes | Yes |
| 521907 | USA | IntelliCenter System (Load Center with i5PS Personality Kit) | No | No | Yes |
| 521908 | USA | IntelliCenter System (Load Center with i10PS Personality Kit) | Yes, IC40 | Yes | Yes |
| 523125 | Canada | IntelliCenter System (Load Center with 5P-C/Personality Kit) | No | Yes | No |
| 523126 | Canada | IntelliCenter System with 5PS-C | No | Yes | Yes |
| 523127 | Canada | IntelliCenter System with 8PS-C | No | Yes | Yes |

Note: Each system includes an outdoor wireless antenna. Pool/spa systems above include two IntelliValve® Valve Actuators.

INTELLICENTER UPGRADE KITS FOR EASYTOUCH AND INTELLITOUCH CONTROL SYSTEMS

| | | |
|--------|---|---|
| 522045 | IntelliTouch/EasyTouch to Next Gen Upgrade Kit - i10P, for LC/PC | Systems manufactured prior to 2012 (2003 to 2012) |
| 522046 | IntelliTouch/EasyTouch to Next Gen Upgrade Kit - i10PS, for LC/PC | Systems manufactured prior to 2012 (2003 to 2012) |
| 523218 | IntelliTouch to Next Gen Upgrade Kit - i10D, for LC/PC (was 523048) | Systems manufactured prior to 2012 (2003 to 2012) |
| 522047 | IntelliTouch/EasyTouch to Next Gen Upgrade Kit - i10P, for CLC/CPC | Systems manufactured after 2012 |
| 522048 | IntelliTouch/EasyTouch to Next Gen Upgrade Kit - i10PS for CLC/CPC | Systems manufactured after 2012 |
| 522049 | IntelliTouch to Next Gen Upgrade Kit - i10D, for CLC/CPC | Systems manufactured after 2012 |
| 523529 | IntelliCenter Expansion Upgrade Kit CLC/CPC | |
| 523530 | IntelliCenter Expansion Upgrade Kit Legacy | |

Android® is a registered trademark of Google, Inc. iOS® is a registered trademark of Cisco Technology in the United States and/or other countries. Mac® is a registered trademark of Apple, Inc. in the United States and/or other countries. Amazon Echo® is a registered trademark of Amazon Technologies, Inc. in the United States and/or other countries.

INTELLICENTER®

CONTROL SYSTEM FOR POOLS AND SPAS

AL A CARTE ORDERING STEP 1: PICK YOUR LOAD AND POWER CENTER

Ordering Information

| Product | Description | IntelliChlor Transformer |
|-------------------------------|--|--------------------------|
| LOAD AND POWER CENTERS | | |
| 522041 | Load Center (with Salt Chlorine Generator support) | Included |
| 522042 | Power Center (with Salt Chlorine Generator support) | Included |
| 522043 | Load Center (without Salt Chlorine Generator support) | Not Included |
| 522044 | Power Center (without Salt Chlorine Generator support) | Not Included |

STEP 2: PICK YOUR PERSONALITY KIT

| Product | Description | Body of Water Style | Motherboard | Daughter Card | No. of Additional Relays** |
|---------------------------------------|-------------------------------------|---------------------|-------------|---------------|----------------------------|
| INTELLICENTER PERSONALITY KITS | | | | | |
| 521909 | IntelliCenter Personality Kit i5P | Single | i5P | N/A | 0 |
| 521910 | IntelliCenter Personality Kit i8P | Single | i5P | i8P | 3 |
| 521911 | IntelliCenter Personality Kit i10P | Single | i5P | i10P | 5 |
| 521912 | IntelliCenter Personality Kit i5PS | Shared Equipment | i5P | i5PS | 0 |
| 521913 | IntelliCenter Personality Kit i8PS | Shared Equipment | i5P | i8PS | 3 |
| 521914 | IntelliCenter Personality Kit i10PS | Shared Equipment | i5P | i10PS | 5 |
| 521915 | IntelliCenter Personality Kit i10D | Dual Equipment | i5P | i10D | 5 |
| 522033* | IntelliCenter i5X Expansion Kit | — | i5X | N/A | 0 |
| 522034* | IntelliCenter i10X Expansion Kit | — | i5X | i10x | 5 |

*Expansion kits use an i5X motherboard. i5P motherboards cannot be used in expansion panels.

** Load center comes with five (5) 3 HP relays.

STEP 3: PICK YOUR ACCESSORIES

| Product | Description | Notes |
|--|---|---|
| LOAD AND POWER CENTERS / SPACOMMAND REMOTES | | |
| 522035 | IntelliCenter Indoor Control Panel, White Faceplate | |
| 523058 | IntelliCenter Indoor Control Panel, Tan Faceplate | |
| 523059 | IntelliCenter Indoor Control Panel, Black Faceplate | |
| 522036 | IntelliCenter Wireless Remote with Transceiver | |
| 522038Z | IntelliCenter Valve Expansion Module | Adds six actuator ports to system (on main load center). |
| 522039Z | Pool Cover Interface Expansion Board | Supports two covers. |
| 522475Z | Wi-Fi Antenna (primary client bridge) | Included in the bundled systems above but must be ordered separately when building a system a la carte. |
| 521176 | SpaCommand Remote, Black with 150 ft. cable | |
| 521177 | SpaCommand Remote, Black with 250 ft. cable | |
| 521178 | SpaCommand Remote, White with 150 ft. cable | |
| 521179 | SpaCommand Remote, White with 250 ft. cable | |
| 521180 | Mudbox Accessory for recessing SpaCommand Remote into deck or tile. Includes cover plate and bezel. | |
| INTELLICENTER TRAINING AID | | |
| 523248 | IntelliCenter Laptop Trainer | |

See page 362 for replacement parts.

INTELLISYNC™

PUMP CONTROL AND MONITORING SYSTEM



Featured Highlights

- Affordable pool automation
- 24/7 pump control and monitoring via the Pentair Home App
- Easy Installation, plugs into a 120V outlet
- Freeze protection, safeguards the pump in cold weather conditions
- Pool owners receive maintenance alerts or have them sent to their pool professional*

The IntelliSync Pump Control and Monitoring System gives pool owners smart device control of Pentair pumps such as IntelliFlo®¹ and SuperFlo® Variable Speed Pumps. Through the convenience of the Pentair Home app, this pool pump controller lets you adjust the pool pump, plus get monitoring alerts on select models.

Ordering Information

| Product | Description |
|--|--|
| INTELLISYNC POOL PUMP CONTROL AND MONITORING SYSTEM | |
| 523404 | IntelliSync Control Unit |
| 350122 | IntelliFlo ¹ Communication Cable (Not Included) |
| 353129Z | SuperFlo Communication Cable (Not Included) |

*Ability to send information to pool professional is optional an subject to availability.

¹ Not compatible with IntelliFlo VF pumps. Connects with other IntelliFlo pump models and SuperFlo Variable Speed pumps.

CHEMCHECK™

WATER QUALITY MONITORING SYSTEM

Featured Highlights

- Allows pool owners to stay informed and stay ahead of fluctuating pool chemistry
- Identifies and alerts home owner's and pool professionals of water quality issues before they become a problem
- Gives pool owners confidence in their water quality
- Easily installed at the equipment pad
- NSF 50 Certified

TRADEGRADE



Give your customers more confidence in their water quality. Through the Pentair Home App, the ChemCheck Water Quality Monitoring System allows pool owners to use their smart device to instantly check their pool water chemistry and monitor pH levels, sanitizer performance and temperature. Your customers will spend less time testing and more time resting.

Ordering Information

| Product | Description | Weight | Dimensions |
|--|--------------------------------|--------|-------------------------------|
| CHEMCHECK WATER QUALITY MONITORING SYSTEM | | | |
| 523402 | ChemCheck Battery Control Unit | 8 lbs | 16.25" L x 13.375" W x 9.5" H |
| 523476 | ChemCheck 120V Control Unit | 8 lbs | 16.25" L x 13.375" W x 9.5" H |

SCREENLOGIC2® INTERFACE

FOR INTELLITOUCH® AND EASYTOUCH® AUTOMATION SYSTEMS

TRADEGRADE



Add an ScreenLogic2 Interface to Pentair automation systems and gain pool access from practically anywhere at anytime using your smartphone, computer, mobile digital device, Apple Watch wrist wearable device, and now on the Amazon Echo.

Featured Highlights

- Use a smartphone, computer, mobile digital device, Apple Watch® wrist wearable device and now Amazon Echo® to control pool functions from practically anywhere
- Remotely manage using the ScreenLogic2 Interface Application
- Easily change, track and monitor history of pH and ORP levels when using IntelliChem® Chemical Control System with IntelliTouch or EasyTouch Automation
- ScreenLogic2 Interface app now allows full color lighting control for both IntelliBrite® LED Pool/Spa/Landscape Lights and MagicStream® Laminars
- All ScreenLogic2 Interface Kits come with a protocol adapter and ScreenLogic2 Interface PC program on CD

ScreenLogic2 Interface allows you to control the key functions of your pool and spa using the IntelliTouch and EasyTouch control systems, using controllers such your smartphone, mobile digital device, Apple Watch wrist wearable device, and computer. The ScreenLogic Bundle conveniently includes the Protocol Adapter (520500) and the ScreenLogic Interface Wireless Connection Kit (522620).

Ordering Information

| Product | Description |
|---|--|
| SCREENLOGIC2 INTERFACE CONTROL SYSTEMS | |
| 522104 | ScreenLogic Bundle (includes 520500 and 522620) |
| 520500 | Protocol Adapter Only |
| 522620 | Wireless Connection Kit Complete, antenna and transceiver |
| 520639 | High Powered ScreenLogic Interface Wireless Connection Kit – Includes two radio transmitters that eliminate the need to run cable from the Load Center into the home where the protocol adapter and wireless router are located. This is for large properties where the standard 522620 does not work. |

* All ScreenLogic2 Interface Kits come with a protocol adapter

Macintosh®, iPhone®, and iPad®, and Apple Watch® are registered trademarks of Apple Inc. in the United States and/or other countries. Alexa® and Amazon Echo® are trademark of Amazon Technologies, Inc., in the United States and/or other countries.

NOTE: THE PENTAIR SCREENLOGIC INTERFACE FOR MACINTOSH® DESKTOP COMPUTERS IS NOT COMPATIBLE WITH THE RECENTLY RELEASED 64BIT SPEED MACINTOSH CATALINA OPERATING SYSTEM. CUSTOMERS WHO UPDATE THEIR MAC® DESKTOP COMPUTERS TO THE NEW CATALINA MacOS WILL NO LONGER BE ABLE TO USE SCREENLOGIC DESKTOP INTERFACE. THIS CHANGE DOES NOT AFFECT IPHONE®, IPAD®, ALEXA® OR ANY OTHER SCREENLOGIC INTERFACES. ONLY MAC COMPUTER DESKTOPS WITH SCREENLOGIC WHO UPDATE TO THE NEW CATALINA OS.

CALIFORNIA PROPOSITION 65 WARNING

⚠ **WARNING:** Cancer and Reproductive Harm.
⚠ **AVERTISSEMENT:** Peut Causer le Cancer et des Dommages au Système Reproducteur.
⚠ **ADVERTENCIA:** Cáncer y Daño Reproductivo.

www.p65warnings.ca.gov
P65BTR-A

SCREENLOGIC2® INTERFACE (CONT'D)

CONNECTION DIAGRAM

The ScreenLogic2 Interface allows EasyTouch® and IntelliTouch® Automation users to control the key functions of their pool and spa using a smartphone, mobile digital device, computer, Apple Watch® wrist wearable device and now Amazon Echo® to control pool functions from practically anywhere.

ScreenLogic2 Interface is easy to setup. A wireless connection kit is provided to eliminate the need to run cable where impossible or impractical to do so.

Personal Computer - A PC or Laptop. Connects to a wireless router and the ScreenLogic2 Interface Protocol adapter for control of IntelliTouch and EasyTouch Automation pool/spa systems. Requires a PC/Laptop (Windows XP® or later) with Ethernet/RJ45 adapter installed.

Smartphone/Mobile Digital Device/Apple Watch wrist wearable device - Enables you to control your pool and spa features using the ScreenLogic2 Interface.

Indoor Control Panel - This control panel for IntelliTouch and EasyTouch systems consists of a backlit LCD and connects into the Load Center for control of IntelliTouch or EasyTouch pool and spa systems.

MobileTouch® Wireless or EasyTouch Wireless Remote - This wireless control panel has a backlit LCD. Receives and transmits commands via the Transceiver antenna located at the Load Center.

Existing Wireless Router - Connects to the PC or Laptop via Ethernet connection.

Protocol Adapter - Connects to wireless router via Ethernet connection and to Personality board (Load/Power Center) via a four-wire 22-AWG cable or provided wireless connection kit.

IntelliTouch or EasyTouch Automation Load Center or Power Center - The main control center, located at the equipment pad controls pump, heater, and light relays. It receives commands via Protocol adapter, and wireless and wired control panels connected to the Personality board.

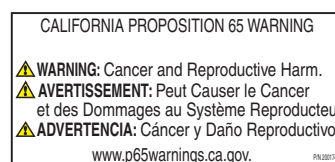
MobileTouch Wireless and EasyTouch Wireless Remote Transceiver Antenna - This antenna sends and receives commands to and from the MobileTouch Wireless control panel.

Windows XP® is a registered trademark of Microsoft Corporation.

Macintosh®, iPhone®, and iPad®, and Apple Watch® are registered trademarks of Apple Inc. in the United States and/or other countries.

Alexa® and Amazon Echo® are trademark of Amazon Technologies, Inc., in the United States and/or other countries.

NOTE: THE PENTAIR SCREENLOGIC INTERFACE FOR MACINTOSH® DESKTOP COMPUTERS IS NOT COMPATIBLE WITH THE RECENTLY RELEASED 64BIT SPEED MACINTOSH CATALINA OPERATING SYSTEM. CUSTOMERS WHO UPDATE THEIR MAC® DESKTOP COMPUTERS TO THE NEW CATALINA MacOS WILL NO LONGER BE ABLE TO USE SCREENLOGIC DESKTOP INTERFACE. THIS CHANGE DOES NOT AFFECT IPHONE®, IPAD®, ALEXA® OR ANY OTHER SCREENLOGIC INTERFACES. ONLY MAC COMPUTER DESKTOPS WITH SCREENLOGIC WHO UPDATE TO THE NEW CATALINA OS.



INTELLITOUCH® AUTOMATION SYSTEMS

ADVANCED AUTOMATION SYSTEMS FOR POOL AND SPA

TRADEGRADE



Featured Highlights

- UltraTemp® Heat Pump Cooling Support
- SpaCommand® Spa-Side Remote Control of IntelliFlo® Pump
- MagicStream® Laminar support
- IntelliChem® Controller support
- ColorVision® Bubbler support

IntelliTouch Automation offers superior control systems from small to the most ambitious pool and spa designs including water features and spectacular lighting effects. IntelliTouch Automation Systems offer innovative technology and a wide range of wireless and wired control panels that are easy to program with simple menus to enable pool owners to create and change programs without complication. Users can choose to access their pool from practically anywhere using their smartphone, computer, mobile digital device, Apple Watch® wrist wearable device and now on Amazon Echo®, or the MobileTouch® Wireless (900MHz) Control Panel to complete their pool and spa automation system.

IntelliTouch Automation offers advanced control technology to suite individual needs including:

- **ScreenLogic2® Interfaces** – Enables IntelliTouch Automation users to control their pool and spa features using wireless color touch screen devices including a smartphone, computer, mobile digital device or Apple Watch. ScreenLogic2 Interface systems now have advanced features such as remote monitoring and control over the internet and email alerts for specific events. Other wired interface options are also available to control pool and spa features via a desktop or laptop PC from within the home or on the road.
- **Salt Chlorine Feature** – Enables IntelliTouch Automation to control and monitor popular Salt Chlorine Generators including Pentair Aquatic Systems' IntelliChlor® Salt Generator, Goldline Controls®, AutoPilot®, and AutoClear® from many of the available user interfaces. Users do not have to adjust the salt chlorine generator at the equipment pad.
- **Support for IntelliFlo® Pumps** – The IntelliFlo Pump is the intelligent swimming pool pump that is changing all the rules. Adaptable to any application up 230 volts and 160 gallons per minute, you simply program the pump speed to suit the application. The IntelliFlo Pump then dials in the perfect power factor. IntelliFlo Pumps constantly monitor water flow and electrical current, making sure that the filtration system is operating at peak efficiency. And that means energy savings never before possible – up to 90% over conventional pumps.
- **Advanced Color Lighting** – Enables users to experience a world of lighting animation when teamed up with IntelliBrite® 5g Color Lights, GloBrite® LED Lights, MagicStream Laminars, ColorCascade and ColorVision Bubbblers. One of the most dramatic innovations is the Swimming Colors feature in which colors appear to swim through the water, pouring into one another.

Technical Note: Lights must be connected to separate Auxiliary Circuits for Swimming Colors to function.

IntelliTouch Automation systems offer the flexibility to handle from 5 to 40 circuits that can be used to control any combination of pumps, lights, water features, etc. As an added benefit, user-configurable circuits (Feature Circuits) can also be used to control these combinations of features and more. Feature Circuits even add Macro possibilities, where any number of circuits can be combined on a single button. This gives the pool owner the ability to set up “themes” with custom names all with one press of a single button.

IntelliTouch Automation users can also dim any high voltage incandescent light such as Pentair Amerlite® and SpaBrite® Lights up to eight levels using the IntelliTouch Automation Controller Dimmer Module (P/N 520406). The dimmer module supports multiple lights from 100 watts up to 1,000 watts and installs in a standard relay location. Any number of dimmers (up to 10 maximum) may be used with a maximum combined load of 4,000W in a single Load Center.

Goldline Controls® is a registered trademark of Hayward Industries, Inc.
 AutoPilot® is a registered trademark of Aquacal AutoPilot, Inc.
 AutoClear® is a registered trademark of Zodiac Pool Systems, Inc.

Amazon Echo® is a trademark of Amazon Technologies, Inc., in the United States and/ or other countries.

Apple Watch® is a registered trademark of Apple, Inc. in the United States and other countries.

INTELLITOUCH® AUTOMATION ENCLOSURE KITS

ORDERING AN INTELLITOUCH AUTOMATION SYSTEM – STEP 1:

TRADEGRADE

Featured Highlights

- **Load Center** – Includes built-in sub panel (150 AMPS) breaker base capable of holding up to ten 1 inch breakers. Also includes five 25 AMP 3 HP relays, 120V/240V transformer with secondary side circuit protection. Multiple knockouts for 1/2 inch to 1-1/4 inch conduit are supplied as well as a GFCI receptacle side knock out. The Load Center provides ample space for all high and low voltage wiring needs.
- **Power Center** – Offers a smaller footprint than the Load Center. The Power Center does not include a circuit breaker base. Users should choose this enclosure if they already have existing circuit breakers/sub-panel for their equipment.



Power Center



Load Center
(Shown with Personality Kit)

Pentair Aquatic Systems' Load Center and Power Center features more knockouts and 150 Amps limit as well as space for 10 breakers on the Load Center. For added convenience, IntelliTouch Automation enclosures can be ordered and integrated with the IntelliChlor® Salt Chlorine Generator transformer so a separate power center is not required.

Ordering Information

| Product | Description | 3 HP Relays Std. / Max. | Number of Circuit Breaker Spaces | Transformer Voltage | Size |
|--|--------------|----------------------------|-------------------------------------|------------------------|-----------------------------------|
| INTELLITOUCH AUTOMATION ENCLOSURE KITS WITH INTELLICHLOR TRANSFORMER | | | | | |
| 521213 | Load Center | 5 / 10 | 10 | 115V / 230V | 26 in. H x 17 in. W x 5-1/4 in. D |
| 521214 | Power Center | 5 / 10 | None | 115V / 230V | 20 in. H x 17 in. W x 5-1/4 in. D |
| INTELLITOUCH AUTOMATION ENCLOSURE KITS WITHOUT INTELLICHLOR TRANSFORMER | | | | | |
| 521215 | Load Center | 5 / 10 | 10 | 115V / 230V | 26 in. H x 17 in. W x 5-1/4 in. D |
| 521216 | Power Center | 5 / 10 | None | 115V / 230V | 20 in. H x 17 in. W x 5-1/4 in. D |

CALIFORNIA PROPOSITION 65 WARNING
 ⚠️ **WARNING:** Cancer and Reproductive Harm.
 ⚠️ **AVERTISSEMENT:** Peut Causer le Cancer et des Dommages au Système Reproducteur.
 ⚠️ **ADVERTENCIA:** Cáncer y Daño Reproductivo.
www.p65warnings.ca.gov PN 202114

See page 363 for replacement parts.

INTELLITOUCH® AUTOMATION PERSONALITY KITS

ORDERING AN INTELLITOUCH AUTOMATION SYSTEM – STEP 2:

TRADEGRADE

i5+3S Personality Kit
(for single body of water)



i9+3 Personality Kit
(shared equipment)



Featured Highlights

- Shared Equipment: Pool and spa combinations with shared filtration system – Pool owners can enjoy the convenience of motorized valves for water flow separation between pool and spa
- Dual Equipment: Pool and Spa Dual Sets of Equipment – The IntelliTouch Control System i10+3D provides advanced automation for a pool and spa using two separate sets of equipment. The IntelliTouch Automation Personality Kit controls ten pump and/or lighting circuits and two heaters.
- Single Equipment: Pool Only or Spa Only Applications – The IntelliTouch Automation i5+3S and i9+3S provide advanced automation for a single body of water

There are six Personality Kit models available for various pool and spa combinations. Each Personality Kit provides complete pool and spa controls that are fully programmable. Every circuit has a countdown timer, ability to do one-time-use programs, salt generation interface for popular salt chlorinators, spectacular colored pool/spa lighting effects, along with solar control capabilities. In addition, there are various options available including light dimming, smart home interface, spa-side remote switches, valve actuators for water flow control, additional indoor wired or wireless user interface control panels, and even telephone remote control.

Ordering Information

| Product | Model Number | High Voltage Circuits | 3 HP Relays Kit / Total * | Feature Circuits | Valve Actuators Std. / Opt. / w/Valve Expansion Module** |
|---|--------------------|-----------------------|---------------------------|------------------|--|
| POOL/SPA – SHARED EQUIPMENT | | | | | |
| <i>Pump, Filter & Heater shared between Pool and Spa by two automated 3-Way Valves.</i> | | | | | |
| 521219 | i5+3 | Filter + 4 Aux | 0 / 5 | 10 | 2 / 4 / 7 |
| 521220 | i7+3 | Filter + 6 Aux | 2 / 7 | 10 | 2 / 4 / 7 |
| 521221 | i9+3 | Filter + 8 Aux | 4 / 9 | 10 | 2 / 4 / 7 |
| POOL/SPA – DUAL EQUIPMENT | | | | | |
| <i>Two Pumps, Two Filters & Two Heaters for separate Pool and Spa.</i> | | | | | |
| 521222 | i10+3D | 2 Filters + 8 Aux | 5 / 10 | 10 | 0 / 2 / 5 |
| POOL OR SPA – SINGLE BODY OF WATER | | | | | |
| <i>Pump, Filter & Heater for an individual Pool or Spa.</i> | | | | | |
| 521223 | i5+3S | Filter + 4 Aux | 0 / 5 | 10 | 0 / 2 / 5 |
| 521224 | i9+3S | Filter + 8 Aux | 4 / 9 | 10 | 0 / 2 / 5 |
| EXPANSION KITS | | | | | |
| 521225 | i5X Expansion Kit | | 0 / 5 | 0 | 0 / 2 / 5 |
| 521226 | i10X Expansion Kit | | 5 / 10 | 0 | 0 / 2 / 5 |

* Load Center or Power Center, purchased separately, includes five 3 HP relays.

** Valve expansion module adds three additional valves to be used (P/N 520285).

Note: i5 and i5S are now i5+3 and i5+3S.

Note: Valve actuators now come with 25 ft. cables for wiring convenience.

CALIFORNIA PROPOSITION 65 WARNING

▲ **WARNING:** Cancer and Reproductive Harm.
▲ **AVERTISSEMENT:** Peut Causer le Cancer et des Dommages au Système Reproducteur.
▲ **ADVERTENCIA:** Cáncer y Daño Reproductivo.

www.p65warnings.ca.gov
PN20171A

See page 363 for replacement parts.

INTELLITOUCH® AUTOMATION INTERFACE KITS

ORDERING AN INTELLITOUCH AUTOMATION SYSTEM – STEP 3:



MobileTouch® Wireless Remote



Indoor Control Panel



Apple Watch® Wrist Wearable Device



Amazon Echo®



Mobile Digital Devices

CALIFORNIA PROPOSITION 65 WARNING

⚠️ **WARNING:** Cancer and Reproductive Harm.
 ⚠️ **AVERTISSEMENT:** Peut Causer le Cancer et des Dommages au Système Reproducteur.
 ⚠️ **ADVERTENCIA:** Cáncer y Daño Reproductivo.
www.p65warnings.ca.gov

One or more of the following Standard or ScreenLogic2® Interface Kits can be used with IntelliTouch Automation Personality Kits. For example, smartphones, mobile digital devices, Apple Watch wrist wearable device, Amazon Echo or Indoor Control Panels can be mixed or matched throughout the home. ScreenLogic2 Interface systems now have advanced features such as remote monitoring and control over the internet and email alerts for specific events. The Interface options include:

Ordering Information

| Product | Description |
|---|---|
| STANDARD INTERFACES | |
| 520138 | Indoor Control Panel – 3-3/4 in. monochrome backlit LCD. Wired to the Load or Power Center. |
| 520906 | MobileTouch Wireless – Wireless control panel with transceiver. 3-3/4 in. monochrome backlit LCD. |
| SCREENLOGIC2 INTERFACES | |
| 522104 | ScreenLogic Bundle (includes 520500 and 522620 in one box). |
| 520500 | Protocol Adapter Only |
| SCREENLOGIC2 INTERFACE ACCESSORIES | |
| 522620 | Wireless Connection Kit Complete, antenna and transceiver |

Apple Watch® is a registered trademark of Apple, Inc. in the United States and other countries.

Amazon Echo® is a trademark of Amazon Technologies, Inc., in the United States and/or other countries.

INTELLITOUCH® AUTOMATION ACCESSORIES

TRADEGRADE



SpaCommand® Spa-Side Remote (also available in black)



QuickTouch® II Remote



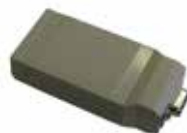
IntelliTouch Controller Dimmer Module



Outdoor Control Panel (installs in the Load or Power Center)



Load Center



i-Link Home Automation Adapter

CALIFORNIA PROPOSITION 65 WARNING
 ⚠️ WARNING: Cancer and Reproductive Harm.
 ⚠️ AVERTISSEMENT: Peut Causer le Cancer et des Dommages au Système Reproducteur.
 ⚠️ ADVERTENCIA: Cáncer y Daño Reproductivo.
www.p65warnings.ca.gov PH.201714

Ordering Information

| Product | Description |
|--|--|
| INTELLITOUCH ACCESSORIES | |
| 520442 | i-Link Home Automation Adapter Interface for IntelliTouch Automation – Enables homeowners using Home Automation systems such as Elan Home Systems®, Crestron®, AMX®, Vantage®, Lutron®, Control4® and others to control IntelliTouch Automation basic features via their Home Automation control interface. Call for other Home Automation system compatibility. |
| 520406 | IntelliTouch Controller Dimmer Module – Enables users to dim their Amerilite® and SpaBrite® Lights up to eight levels (30% to 100%). Each dimmer module supports multiple lights from 100 watts up to 1,000 watts combined load using 120VAC (220VAC not supported). For example, a 500W and a 100W Amerilite Light (total 600W) could be used with one dimmer module. Installs in a standard relay location. Any number of dimmers (up to 10 maximum) may be used with a maximum combined load of 4,000W. Note: Expansion Center Kit(s) may be required to house multiple dimmer modules (models i5x (P/N 521225) or i10x (P/N 521226). The IntelliTouch Controller Dimmer Module is only designed to be used with pool and spa lights and not backyard lighting systems. |
| 521209 | QuickTouch II Remote – Four-function wireless remote for pool and spa functions. Operated within 250 feet range of the Load or Power Center. |
| 520403 | Dual Heater Kit – This kit is for use with IntelliTouch systems and enables homeowners to utilize a gas heater and heat pump. The IntelliTouch system determines which heat source is appropriate given the conditions. This kit disables most solar heating controls. The kit includes a heater relay and temperature sensor. |
| SPACOMMAND TEN-FUNCTION SPA-SIDE REMOTE | |
| 521178 | SpaCommand Remote, White with 150 ft. cable |
| 521176 | SpaCommand Remote, Black with 150 ft. cable |
| 521179 | SpaCommand Remote, White with 250 ft. cable |
| 521177 | SpaCommand Remote, Black with 250 ft. cable |
| 521180 | Mudbox Accessory for recessing SpaCommand Remote into deck or tile. Includes cover plate and bezel. |

| Product | Description |
|---|---|
| ACCESSORIES FOR INTELLITOUCH SYSTEMS | |
| 521485 | IntelliValve® Valve Actuator |
| 520199 | 1000 ft. cable, four conductor, 22 AWG |
| 520106 | 3HP Relay for IntelliTouch |
| RCS1 | Additional Spa Jets Switch (for multiple jet pumps) |
| ESO3 | Emergency Shut-Off Switch w/Audible Alarm |
| 520138 | Indoor Control Panel for IntelliTouch® (White), additional |
| 520967 | Light Direct Connect Kit (eliminates need for j-box) |
| 6870002 | Telephone remote control for any single circuit, usually Spa mode |

| Product | Description |
|---|---|
| ACCESSORIES FOR INTELLITOUCH SYSTEMS | |
| 520272 | Air & Water Temperature Sensor (white) |
| 522101 | Solar Temperature Sensor (black) |
| 520198 | Two-Speed 3HP Relay |
| 263045 | Valve Actuator |
| 520285 | Valve module for adding up to 3 valve actuators |
| 520818 | Com Port Expansion Module |
| AI101 | Surge Suppressor for 115V transformer wiring |
| AI201 | Surge Suppressor for 230V transformer wiring |

Elan Home Systems® is a registered trademark of Core Brands, LLC.
 Crestron® is a registered trademark of Crestron Electronics, Inc.
 AMX® is a registered trademark of AMX, L.L.C., LTD.

Vantage® is a trademark of Legrand Home Systems, Inc.
 Lutron® is a registered trademark of Lutron Electronics, Inc.
 Control4® is a registered trademark of Control4 Corp.

INTELLITOUCH® AUTOMATION ACCESSORIES (CONT'D)

Featured Highlights

- **MobileTouch® Wireless Remote Accessory** – Allows any IntelliTouch Automation System to have a wireless remote with all capabilities of the indoor control panel. With an average range of 500 feet, pool owners have system control anywhere around the home or yard. Installation is simple, and requires no high voltage wiring. Powered by a replaceable rechargeable lithium-ion battery. Includes an AC/DC adapter for recharging. Water resistant, wireless user interface control panel with high-resolution 3-3/4 in. monochrome backlit LCD. Rechargeable lithium-ion battery. Easy to use control buttons with customizing feature for naming circuits.
- **iS4 Four-Function Spa-side Remote** – Provides control of any four functions, such as pool, spa, auxiliary circuits (AUX 1-8), Feature Circuits, Macros, Heater Enable and Heat Boost. Available in White, Black and Gray. Four cable lengths are available:
- **Expansion Kits** – Models i5X and i10X, offer five or ten additional Auxiliary Circuits for systems i9+3, i9+3S and i10+3D. Each IntelliTouch Automation Expansion Kit requires a Load Center (P/N 521215) or Power Center (P/N 521216). Up to three Expansion Kits and Load or Power Centers may be added to a system, for control of up to 38 Auxiliary Circuits (40 auxiliary circuits for i10+3D).



iS4 Remote Control



MobileTouch Wireless Remote & Cradle

CALIFORNIA PROPOSITION 65 WARNING
 ⚠️ **WARNING:** Cancer and Reproductive Harm.
 ⚠️ **AVERTISSEMENT:** Peut Causer le Cancer et des Dommages au Système Reproducteur.
 ⚠️ **ADVERTENCIA:** Cáncer y Daño Reproductivo.
 www.p65warnings.ca.gov. P/N 202174

Ordering Information

| Product | Description |
|--|-------------|
| MOBILETOUCH WIRELESS REMOTE ACCESSORIES | |

| | |
|--------|--|
| 520906 | MobileTouch Wireless Accessory Kit includes wireless remote and transceiver module with antenna. |
| 520907 | Additional MobileTouch Wireless remote only |

| Product | Color | Product | Color | Product | Color | Product | Color |
|-------------------------------------|-------|--------------------------------------|-------|--------------------------------------|-------|--------------------------------------|-------|
| iS4 REMOTE WITH 50 FT. CABLE | | iS4 REMOTE WITH 100 FT. CABLE | | iS4 REMOTE WITH 150 FT. CABLE | | iS4 REMOTE WITH 250 FT. CABLE | |
| 521883 | White | 521885 | White | 521887 | White | 521889 | White |
| 521884 | Gray | 521886 | Gray | 521888 | Gray | 521890 | Gray |
| 521891 | Black | 521892 | Black | 521893 | Black | 521894 | Black |

| Product | Description | 3 HP Relays Kit / Total * | Feature Circuits | Valve Actuators Std. / Opt. / w/Module |
|-----------------------|--------------------|---------------------------|------------------|--|
| EXPANSION KITS | | | | |
| 521225 | i5X Expansion Kit | 0 / 5 | 0 | 0 / 2 / 5 |
| 521226 | i10X Expansion Kit | 5 / 10 | 0 | 0 / 2 / 5 |

* Expansion Kit requires Load or Power Center to be purchased separately, which includes five 3HP relays.

INTELLITOUCH® AUTOMATION SALES & SERVICE TOOLS

| Product | Description |
|--|--|
| INTELLITOUCH AUTOMATION SALES AND SERVICE TOOLS | |
| 520396 | Service Panel for IntelliTouch Automation – If access to the Indoor Control Panel is not available, this service panel can be used by service personnel to help setup, customize, or troubleshoot an IntelliTouch Automation system from the control panel at the equipment pad. Includes an attached 6-foot cable for easy connection to the Personality board. |
| 520456 | IntelliTouch Automation Indoor Control Panel POP Display – A non-functional Indoor Control Panel. Make sure all of your dealers have plenty of these for their showrooms. Intended for display and product promotion purposes only. |
| 520400 | IntelliTouch Automation Laptop Trainer – Perfect for use in dealer showrooms or by sales personnel to demonstrate complete system functionality to prospective customers. |
| 520352 | IntelliTouch Automation Demo Unit – Perfect for use in dealer showrooms or by sales personnel to demonstrate IntelliTouch Automation system functionality with Indoor Control Panel interface option to prospective customers. Fully functioning control panel. |
| 520957 | Automation Flash Programming Kit |
| 520461 | Quick Reference Card – Credit card size reference guide. Includes step-by-step instructions to set a House Address for Indoor and MobileTouch® control panels, iS10 Spa-Side remote, and Expansion Load or Power Center. |



IntelliTouch Automation Demo Unit



IntelliTouch Automation Laptop Trainer



IntelliTouch Automation Service Panel



IntelliTouch Automation ICP POP Display



Quick Reference Card

EASYTOUCH® CONTROL SYSTEMS

POOL/SPA CONTROL SYSTEMS

TRADEGRADE



EasyTouch System



Use your smartphone, mobile digital device, Apple Watch® wrist wearable device and now Amazon Echo® to access your pool from practically anywhere

Featured Highlights

EasyTouch Features include:

- UltraTemp® Heat Pump integration
- Supports 2 IntelliFlo® Pumps
- Supports 8 Feature circuits
- MagicStream® Laminar support
- IntelliChem® Controller support
- Works with ScreenLogic2® Interface
- IntelliBrite® Pool and Spa Light support
- SpaCommand® Spa-Side Remote support and control of IntelliFlo® Pump
- Optional Controllers for added convenience: Indoor Control Panel (for 4 or 8 circuit systems), a Wireless controller (for 4 or 8 circuit systems), a QuickTouch® II 4-function wireless remote, a 4-button spa side remote, and SpaCommand spa-side remote.
- All functions controlled with easy, one-button access from the self-contained load center or optional controllers. No need to memorize operating sequences, open and close valves, or reset time clocks and thermostats.
- Built-in diagnostics include automatic verification of the display, microprocessor, switches, indicators, relay outputs, valve outputs, sensor inputs, and communication ports as well as a diagnostic screen that reports failures for troubleshooting and repair purposes
- Includes 150 amp breaker base with space for ten 1-inch breakers
- UL and cUL approved
- Dimensions: 26 in. H x 17 in. W x 5-1/4 in. D

The EasyTouch Control System family offers control for homeowner's looking for an easy to use pool/spa control system. EasyTouch allows full control of all pool/spa features including advanced features such as colored lighting and IntelliChlor® Salt Chlorine Generator support. Every EasyTouch system includes an easy to use control panel that is built into the outdoor enclosure. This control panel allows for full system setup, programmability, and everyday operation. In addition, there are several other available remote interface choices. The EasyTouch systems come in a variety of configurations: Pool only or Spa only, Pool/Spa with shared equipment, and also integrated with Pentair Aquatic Systems' IntelliChlor Salt Chlorine Generator.

CALIFORNIA PROPOSITION 65 WARNING
 ⚠️ **WARNING:** Cancer and Reproductive Harm.
 ⚠️ **AVERTISSEMENT:** Peut Causer le Cancer et des Dommages au Système Reproducteur.
 ⚠️ **ADVERTENCIA:** Cáncer y Daño Reproductivo.
www.p65warnings.ca.gov PN1202171A

Ordering Information

| Product | Model |
|--|---|
| EASYTOUCH SYSTEMS WITHOUT INTELLICHLOR TRANSFORMER BUILT-IN | |
| 520591 | EasyTouch 4P – Single Body (base system - no ICP, no actuators) |
| 520703 | EasyTouch 8P – Single Body (base system - no ICP, no actuators) |
| 520538 | EasyTouch 4 – Pool/Spa (base system - no ICP, 2 actuators) |
| 520540 | EasyTouch 8 – Pool/Spa (base system - no ICP, 2 actuators) |
| EASYTOUCH SYSTEMS WITH INTELLICHLOR TRANSFORMER AND INTELLICHLOR CELL | |
| 520592 | EasyTouch 4PSC-IC20 – Single Body (includes SCG integration & IC20 cell) |
| 520593 | EasyTouch 4PSC-IC40 – Single Body (includes SCG integration & IC40 cell) |
| 520704 | EasyTouch 8PSC-IC20 – Single Body (includes SCG integration & IC20 cell) |
| 520705 | EasyTouch 8PSC-IC40 – Single Body (includes SCG integration & IC40 cell) |
| 520542 | EasyTouch 4SC-IC20 – Pool/Spa (includes SCG integration & IC20 cell, 2 actuators) |
| 520543 | EasyTouch 4SC-IC40 – Pool/Spa (includes SCG integration & IC40 cell, 2 actuators) |
| 520544 | EasyTouch 8SC-IC20 – Pool/Spa (includes SCG integration & IC20 cell, 2 actuators) |
| 520545 | EasyTouch 8SC-IC40 – Pool/Spa (includes SCG integration & IC40 cell, 2 actuators) |
| 521150 | EasyTouch 8SC-IC60 – Pool/Spa (includes SCG integration & IC60 cell, 2 actuators) |
| CANADIAN EASYTOUCH SYSTEMS | |
| 520914 | EasyTouch 4P-C – Single Body (salt ready system, cell must be ordered separately) |
| 520915 | EasyTouch 8-C – Pool/Spa (salt ready system, cell must be ordered separately) |
| 520911 | IntelliChlor IC20 cell for Canada |
| 520912 | IntelliChlor IC40 cell for Canada |

See page 364 for replacement parts.

EASYTOUCH® CONTROL SYSTEMS ACCESSORIES

POOL/SPA CONTROL SYSTEMS

| Product | Description | Product | Description |
|--|---|---------|--|
| ACCESSORIES FOR EASYTOUCH SYSTEMS | | | |
| 521485 | IntelliValve® Valve Actuator | 521885 | iS4 Spa-side Remote, White 100 ft. |
| 522104 | ScreenLogic Bundle (includes 520500 and 522620) | 521209 | QuickTouch II Wireless Remote Kit for 4 circuit systems |
| 520500 | Protocol Adapter Only | AI101 | Surge Suppressor for 115V transformer wiring |
| 522620 | Wireless Connection Kit Complete, Antenna and Transceiver | AI201 | Surge Suppressor for 230V transformer wiring |
| 520639 | ScreenLogic High Power Wireless Link for large properties | 520272 | Air & Water Temperature Sensor (white) |
| 520660 | EasyTouch Laptop trainer | 522101 | Solar Temperature Sensor (black) |
| 520199 | 1000 ft. COM cable, four conductor, 22 AWG | 520198 | Two-Speed 3HP Relay |
| 520106 | 3HP Relay for IntelliTouch or EasyTouch | 263045 | Valve Actuator |
| 520548 | EasyTouch ICP (Indoor Control Panel) for 4 circuit systems | 520818 | COM Port Expansion Module with 1 ft. cable |
| 520549 | EasyTouch ICP (Indoor Control Panel) for 8 circuit systems | RCS1 | Additional Spa Jets Switch (for multiple jet pumps) |
| 520546 | EasyTouch Wireless Controller Kit for 4 circuit system, including transceiver | ESO3 | Emergency Shut-Off Switch w/Audible Alarm |
| 520547 | EasyTouch Wireless Controller Kit for 8 circuit system, including transceiver | 520967 | Light Direct Connect Kit (eliminates need for j-box) |
| 520588 | IntelliChlor® Sanitizer Pass-through Cell for Winter or start-up | 521178 | SpaCommand Remote, White with 150 ft. cable |
| 520594 | IntelliChlor Diagnostic Wand | 521176 | SpaCommand Remote, Black with 150 ft. cable |
| 520595 | IntelliChlor replacement unions (contains 2 o-rings, 2 couplers, 2 nuts) | 521179 | SpaCommand Remote, White with 250 ft. cable |
| 520670 | IntelliChlor acid washing kit (contains closed end union cap, o-ring, & coupling nut) | 521177 | SpaCommand Remote, Black with 250 ft. cable |
| 520734 | IntelliChlor 15 foot extension power cord | 521180 | SpaCommand Remote Mudbox Accessory |
| 520736 | IntelliChlor Flow Switch replacement kit | 521500 | SpaCommand Replacement Plastics (black & white trim ring, mounting bracket, screws and O-ring) |

CALIFORNIA PROPOSITION 65 WARNING

⚠ **WARNING:** Cancer and Reproductive Harm.
 ⚠ **AVERTISSEMENT:** Peut Causer le Cancer et des Dommages au Système Reproducteur.
 ⚠ **ADVERTENCIA:** Cáncer y Daño Reproductivo.
www.p65warnings.ca.gov

521209 - QuickTouch® II Wireless Remote Kit



520818 - COM Port Expansion Module



521885 - iS4 Remote Control



520548 - EasyTouch ICP for 4 circuit systems
 520549 - EasyTouch ICP for 8 circuit systems
 520546 - EasyTouch wireless for 4 circuit systems
 520547 - EasyTouch wireless for 8 circuit systems



520554 - IntelliChlor IC20 Cell
 520555 - IntelliChlor IC40 Cell
 521105 - IntelliChlor IC60 Cell



SpaCommand® Remote
TRADEGRADE

See page 364 for replacement parts.

EASYTOUCH® PL4/PSL4 CONTROL SYSTEMS

ENTRY LEVEL POOL/SPA CONTROL SYSTEMS

TRADEGRADE



EasyTouch PL4/PSL4 System

The EasyTouch PL4/PSL4 Control Systems offers a new level of control for homeowner's looking for an affordable, easy to use pool/spa control system. EasyTouch PL4/PSL4 allows control pools with a smaller number of features including pumps, filters, lighting, water features, spa control, heaters and heat pumps, chemical control and sanitizing. The EasyTouch PL4 control system is a 4-circuit system, designed for a single body of water. The EasyTouch PLS4 is designed to control a pool/spa combination. Both options are available bundled with our ScreenLogic Interface Kit that allows for remote operation on a computer, smartphone, mobile digital device or right at the Power Center on the equipment pad. For more advanced features and up to 8 feature circuits, please see previous page for the EasyTouch Control System options.

CALIFORNIA PROPOSITION 65 WARNING

⚠️ **WARNING:** Cancer and Reproductive Harm.
 ⚠️ **AVERTISSEMENT:** Peut Causer le Cancer et des Dommages au Système Reproducteur.
 ⚠️ **ADVERTENCIA:** Cáncer y Daño Reproductivo.
www.p65warnings.ca.gov

Featured Highlights

EasyTouch PL4/PSL4 Features include:

- Supports 1 IntelliFlo® Pump
- Supports 2 Feature circuits
- Supports 4 IntelliFlo Pump speeds
- Supports 4 scheduled programs
- Supports ScreenLogic2® Interface
- IntelliChem® Chemical Controller support
- IntelliChlor® Sanitizer support (must use optional 520556 power center)
- Supports IntelliBrite® Lights, MagicStream® Laminars and ColorVision® Bubblers

Note: EasyTouch PL4/PSL4 Systems use the power center enclosure that does not contain a breaker base.



Use your smartphone, mobile digital device, Apple Watch® wrist wearable device or Amazon Echo® and access your pool from practically anywhere

Ordering Information

| Product | Model |
|-----------------------------------|---|
| EASYTOUCH PL4/PSL4 SYSTEMS | |
| 522352 | EasyTouch PL4 - Single Body (base system - no ICP, no actuators) |
| 522353 | EasyTouch PL4 - Single Body with ScreenLogic Wireless Bundle (base system - no ICP, no actuators) |
| 522354 | EasyTouch PSL4 - Pool/Spa (base system - no ICP, 2 actuators) |
| 522355 | EasyTouch PSL4 - Pool/Spa with ScreenLogic Wireless Bundle (base system - no ICP, 2 actuators) |
| ACCESSORIES | |
| 522464 | EasyTouch PL4/PSL4 Wireless Remote |
| 522465 | EasyTouch PL4/PSL4 Indoor Control Panel |
| 522104 | ScreenLogic Wireless Bundle |
| 520639 | ScreenLogic High Power Wireless Link for large properties |

EASYTOUCH® PS4/PSL4 CONTROL SYSTEMS

ACCESSORIES

| Product | Description | Product | Description |
|---|---|---------|---|
| ACCESSORIES FOR EASYTOUCH PS4/PSL4 SYSTEMS | | | |
| 521485 | IntelliValve® Valve Actuator | 520736 | IntelliChlor Flow Switch Replacement Kit |
| 522464 | EasyTouch PL4/PSL4 Wireless Remote | 521885 | iS4 Spa-side Remote, White 100 ft. |
| 522465 | EasyTouch PL4/PSL4 Indoor Control Panel | 521209 | QuickTouch II Wireless Remote Kit for 4 circuit systems |
| 522104 | ScreenLogic Bundle (includes 520500 and 522620) | AI101 | Surge Suppressor for 115V transformer wiring |
| 520500 | Protocol Adapter Only | AI201 | Surge Suppressor for 230V transformer wiring |
| 522620 | Wireless Connection Kit Complete, antenna and transceiver | 520272 | Air & Water Temperature Sensor (white) |
| 520199 | 1000 ft. COM cable, four conductor, 22 AWG | 522101 | Solar Temperature Sensor (black) |
| 520106 | 3HP Relay for IntelliTouch or EasyTouch | 520198 | Two-Speed 3HP Relay |
| 520588 | IntelliChlor Sanitizer Pass-through Cell for Winter or start-up | 263045 | Valve Actuator |
| 520594 | IntelliChlor Diagnostic Wand | 520818 | COM Port Expansion Module with 1 ft. cable |
| 520595 | IntelliChlor replacement unions (contains 2 o-rings, 2 couplers, 2 nuts) | RCS1 | Additional Spa Jets Switch (for multiple jet pumps) |
| 520670 | IntelliChlor acid washing kit (contains closed end union cap, o-ring, & coupling nut) | ESO3 | Emergency Shut-Off Switch w/Audible Alarm |
| 520734 | IntelliChlor 15 foot extension power cord | 520967 | Light Direct Connect Kit (eliminates need for j-box) |

CALIFORNIA PROPOSITION 65 WARNING
 ⚠️ **WARNING:** Cancer and Reproductive Harm.
 ⚠️ **AVERTISSEMENT:** Peut Causer le Cancer et des Dommages au Système Reproducteur.
 ⚠️ **ADVERTENCIA:** Cáncer y Daño Reproductivo.
www.p65warnings.ca.gov PA82873.4



520556 - IC20, IC40, IC60 Power Center



521209 - QuickTouch® II Wireless Remote Kit



520818 - COM Port Expansion Module



521885 - iS4 Remote Control



522465 - EasyTouch PS4/PSL4 ICP for 4 circuit systems



522464 - EasyTouch PS4/PSL4 wireless for 4 circuit systems



520554 - IntelliChlor IC20 Cell
 520555 - IntelliChlor IC40 Cell
 521105 - IntelliChlor IC60 Cell



523009 - iChlor® 30 Cell Only
 523010 - iChlor 15 Cell Only

See page 364 for replacement parts.

INTELLICONNECT®

CONTROL AND MONITORING SYSTEM

TRADEGRADE



IntelliConnect Control and Monitoring System

Featured Highlights

- Enables smart connections to any of these Pentair devices: IntelliFlo® or IntelliPro® Pumps, IntelliChlor® or iChlor® Sanitizers
- Allows for two relay connections to equipment like pool or landscape lights, pool cleaner booster pumps, or single-speed pumps including competitive models
- Provides real-time information on the status of the filtration systems and other pool equipment
- Easily sets up and schedules automatic operation of connected equipment

IntelliConnect allows pool owners to monitor and control various devices, including pumps, lights, sanitizers and more, all through an app on a smart device, for easy, convenient control. IntelliConnect provides real-time information on the status of the filtration system and other pool equipment. Pool owners can command the system to work a little harder when extra filtration is needed.

| Product | Description |
|---|--|
| INTELLICONNECT CONTROL AND MONITORING SYSTEM | |
| 523317 | IntelliConnect Control and Monitoring System |



IntelliFlo Pump Speed



IntelliChlor Chlorine Output

CALIFORNIA PROPOSITION 65 WARNING
 ⚠️ **WARNING:** Cancer and Reproductive Harm.
 ⚠️ **AVERTISSEMENT:** Peut Causer le Cancer et des Dommages au Système Reproducteur.
 ⚠️ **ADVERTENCIA:** Cáncer y Daño Reproductivo.
www.p65warnings.ca.gov PA 201714

COMPOOL® CONTROL SYSTEMS TO EASYTOUCH® AUTOMATION UPGRADE

Featured Highlights

- Works with ScreenLogic2® Interface
- Allows easy upgrade to EasyTouch® Automation functionality for the following Compool® Systems: CP3400, CP3600, CP3800, CP3810, CP1000*, CP2000*, CP3000, CP30*, CP100*, LX100EZT*, LX100EZTL*, 520348*, 520349*, TimeMaster* with LX-10 power center
- Filter pump + 7 Auxiliaries
- AUX Extra Support
- Works with EasyTouch Automation Indoor Control Panel (520549) and EasyTouch Wireless Remote (520547)
- Supports 2 VS or 2 VF IntelliFlo® Pumps, iS4 and SpaCommand® Spa Side Remotes, IntelliChlor® Salt Chlorine Generator, IntelliBrite® LED Lights, UltraTemp® Heat Pumps, and MagicStream® Laminar Jets
- 8 Feature Circuits
- Supports IntelliChem® Chemical Controller pH/ORP Control System**

* Requires Compool System to EasyTouch Automation Upgrade System with New System Transformer Kit (P/N 521247).

** Requires v2.100 firmware or higher. Visit www.pentairpool.com for the latest firmware updates.



Compool to EasyTouch Upgrade

CALIFORNIA PROPOSITION 65 WARNING
 ⚠️ **WARNING:** Cancer and Reproductive Harm.
 ⚠️ **AVERTISSEMENT:** Peut Causer le Cancer et des Dommages au Système Reproducteur.
 ⚠️ **ADVERTENCIA:** Cáncer y Daño Reproductivo.
www.p65warnings.ca.gov PS 202514

TRADEGRADE



Use your smartphone, mobile digital device, Apple Watch® wrist wearable device or Amazon Echo® and access your pool from practically anywhere

Ordering Information

| Product | Description | Product | Description |
|---|--|----------|--|
| COMPOOL TO EASYTOUCH UPGRADE | | | |
| 521107 | Compool to EasyTouch Upgrade without transformer Kit | | |
| 521247 | Compool to EasyTouch Upgrade with new system transformer Kit | | |
| COMPOOL TO EASYTOUCH UPGRADE ACCESSORIES | | | |
| 522104 | ScreenLogic Bundle (includes 520500 protocol adapter and 522620 wireless connection kit) | 522101 | Solar Temp Sensor (black) |
| 520500 | Protocol Adapter Only | 520554 | IntelliChlor IC20 Cell* |
| 522620 | Wireless Connection Kit Complete, antenna and transceiver | 520555 | IntelliChlor IC40 Cell* |
| 520549 | EasyTouch Indoor Control Panel (8 circuits) | 521105 | IntelliChlor IC60 Cell* |
| 520547 | EasyTouch Wireless Remote (8 circuits) | 520556 | IntelliChlor Power Center |
| 521209 | QuickTouch II Wireless Remote (4 circuits) | 523009 | iChlor 30 Cell Only-Retail |
| 521885 | iS4 Spa-side Remote, White 100 ft. | 523010 | iChlor 15 Cell Only-Retail |
| 521178 | SpaCommand Remote, White, 150 ft. cable | 523080 | iChlor 15 PWR PCK 110 Bundle |
| 521179 | SpaCommand Remote, White, 250 ft. cable | 523081 | iChlor 30 PWR CTR Bundle |
| 521176 | SpaCommand Remote, Black, 150 ft. cable | 523108 | iChlor 30 Cell Only - Canada |
| 521177 | SpaCommand Remote, Black, 250 ft. cable | 523109 | iChlor 15 PWR PCK Bundle - Canada |
| 521180 | Mudbox Accessory | RLYLXD | Relay Kit for 2 Speed Pumps |
| 263045 | Valve Actuator | RLYLX3HP | Additional 25 Amp, 3 HP Power Relay |
| 521485 | IntelliValve® Valve Actuator | 521099Z | Compool to EasyTouch Replacement Circuit Board |
| 520272 | Air & Water Temp Sensor (black) | 520818 | COM port expansion Module |

*** Requires the 520556 IntelliChlor® Salt Chlorine Generator Power Center when used with the Compool to EasyTouch System.

See pages 365–367 for replacement parts.

SUNTOUCH® CONTROL SYSTEM

TRADEGRADE



SunTouch System

SunTouch Control System is the easy way to keep your pool and spa clean, comfortable, and ready to enjoy. With the touch of a few buttons, you can quickly program your pool and spa filtration and heating cycles to fit your schedule. And it's just as simple to change programs or switch to manual mode for those unplanned, spontaneous plunges. With SunTouch Control System, your pump and heater automatically run whenever you want, for as long as you want so your pool and spa are always warm and inviting.

In addition to controlling your pump and heater, the standard SunTouch Control System package has the ability to schedule operation of additional functions, such as your lights or automatic cleaner. You can also add a third valve actuator to automate a solar heating system or water feature.

Featured Highlights

- One touch function – no complicated routine to memorize
- Ability to program pool and spa and two additional features. All circuits in the system can control four operating schedules (maximum six total schedules per system)
- Supports 4 feature circuits for programming convenience
- Compatible with gas or electric heaters, heat pumps, and solar systems
- Temperature control can be set in one degree increments
- Supports one IntelliFlo® Pump and IntelliChlor® Salt Chlorine Generator

CALIFORNIA PROPOSITION 65 WARNING

⚠ **WARNING:** Cancer and Reproductive Harm.
 ⚠ **AVERTISSEMENT:** Peut Causer le Cancer et des Dommages au Système Reproducteur.
 ⚠ **ADVERTENCIA:** Cáncer y Daño Reproductivo.
www.p65warnings.ca.gov

Ordering Information

| Product | Description |
|---|---|
| SUNTOUCH CONTROL SYSTEMS | |
| 520820 | SunTouch Control System (pool/spa) – Includes 2 actuators, 2 temp sensors (20 ft. water, 40 in. air) and 3 relays |
| 520819 | SunTouch Solar Control System – Includes 1 actuator, 1 solar valve, and 2 temp sensors (20 ft. water, 40 in. solar) |
| 520859 | SunTouch Single Body Control System – Includes temp sensors (20 ft. water, 40 in. air) and 3 relays |
| 520856 | SunTouch Solar with 3-way valve – Includes 1 actuator, 3-way valve, and 2 temp sensors (20 ft. water, 40 in. solar) |
| 520857 | SunTouch Booster Pump Version – Includes 1 relay, and 2 temp sensors (20 ft. water, 40 in. solar) |
| ACCESSORIES FOR SUNTOUCH SOLAR CONTROL SYSTEMS | |
| 521209 | QuickTouch® II Wireless Remote Kit, including transceiver |
| 520106 | 3HP Relay |
| 520272 | Air & Water Temperature Sensor (white) |
| 522101 | Solar Temperature Sensor (black) |
| 520198 | 2 Speed Pump Relay |
| ES03 | Emergency Shut-Off Switch w/Audible Alarm |
| 521485 | IntelliValve® Valve Actuator |
| 263045 | Valve Actuator |
| 520967 | Light Direct Connect Kit (eliminates need for J-box) |

SOLARTOUCH®

SOLAR CONTROL SYSTEM

TRADEGRADE



Featured Highlights

- Digital calibration of water and solar temperature in one degree increments
- Integrates with **IntelliFlo® and IntelliPro® Variable Speed pumps**
- Set pool temperatures and solar temperature differentials with the touch of a button
- Solar valve automatically drains the solar collectors when pump shuts off
- Durable PTFE seal is maintenance-free for years of dependable service
- LCD display provides sharp, clear readings
- LED indicator lights confirm SolarTouch automation is working. Service indicator LED shows when attention is required.
- Motorized valve actuator is built to last with sturdy steel gears; highly efficient low-voltage motor; service switch for flow direction
- Weatherproof composite enclosure
- Nocturnal cooling and recirculation freeze protection with filter-pump timer override
- 3-year warranty



SolarTouch System

The SolarTouch Solar Control System offers full digital control for the most precise, efficient, swimming pool heating possible. The digital thermostat is set with the touch of a button and will monitor the temperature of the pool water and solar collectors. SolarTouch Control System integrates with IntelliFlo and IntelliPro Variable Speed pumps for unparalleled efficiency.

Ordering Information

| PRODUCT | DESCRIPTION |
|--|---|
| SOLARTOUCH SOLAR CONTROL SYSTEM | |
| 521592 | SolarTouch Solar Control System with 3-way solar drain down valve, valve actuator, and 2 temp sensor (20 ft. water, 40 in. solar) |
| 521632 | SolarTouch Solar Control System with 3-way Valve, valve actuator and 2 temp sensors (20 ft. water, 40 in. solar) |
| 521590 | SolarTouch Solar Control only |
| 521942 | SolarTouch Booster Pump |
| 521606 | SolarTouch Flash Programmer (USB) |

CALIFORNIA PROPOSITION 65 WARNING
 ⚠️ **WARNING:** Cancer and Reproductive Harm.
 ⚠️ **AVERTISSEMENT:** Peut Causer le Cancer et des Dommages au Système Reproducteur.
 ⚠️ **ADVERTENCIA:** Cáncer y Daño Reproductivo.
www.p65warnings.ca.gov

See page 365 for replacement parts.

INTELLIVALVE®

VALVE ACTUATOR

TRADEGRADE

Featured Highlights

- Thirteen (13) LEDs give precise, easy-to-read indication of valve position
- Built-in interface allows quick and simple set-up of water flow
- Sleek, minimalist design is compact and fits easily within any equipment pad
- Sealed, maintenance-free design is weatherproofed for maximum reliability and extended service life
- Suitable for 1.5", 2", 2.5" and 3" valve sizes.
- 24-volt operation for use with standard automation systems, 750 mA max amp draw
- Adjustable 3.75-degree increments within the maximum 180-degree swing



**IntelliValve
Valve Actuator**

The revolutionary IntelliValve Valve Actuator lets you set just the right flow for water features. Its intuitive controls and LED position indicator lights make operation fast and push-button easy. Thirteen (13) bright LEDs provide a clear visual indication of the valve position from fully open to fully closed and everywhere in between. Simply use the left/right and Save buttons to set the perfect flow rate in just seconds.

CALIFORNIA PROPOSITION 65 WARNING
 ⚠️ **WARNING:** Cancer and Reproductive Harm.
 ⚠️ **AVERTISSEMENT:** Peut Causer le Cancer et des Dommages au Système Reproducteur.
 ⚠️ **ADVERTENCIA:** Cáncer y Daño Reproductivo.
www.p65warnings.ca.gov PB20151A

Ordering Information

| Product | Description |
|---------------------|--|
| INTELLIVALVE | |
| 521485 | For any Pentair Automation System Compatible with control systems that use standard actuators |

INTELLILEVEL®

AUTOMATIC WATER LEVELING SYSTEM

TRADEGRADE

Featured Highlights

- Monitors fill amount and fill time and indicates current water level in pool
- Maintains weighted average fill rate
- Eliminates jumper settings
- Alerts if fill fails
- Fills desired amount with a single fill
- Can be used on a static line
- No sensor wires to run to skimmer
- Recommended for **New** Pool Construction

**IntelliLevel
Leveling System**



Ordering Information

| Product | Description |
|---------------------|--|
| INTELLILEVEL | |
| 523265 | IntelliLevel Automatic Water Leveling System |



CALIFORNIA PROPOSITION 65 WARNING
 ⚠️ **WARNING:** Cancer and Reproductive Harm.
 ⚠️ **AVERTISSEMENT:** Peut Causer le Cancer et des Dommages au Système Reproducteur.
 ⚠️ **ADVERTENCIA:** Cáncer y Daño Reproductivo.
www.p65warnings.ca.gov PB20151A

VALVE ACTUATOR

VALVE CONTROL SYSTEMS

TRADEGRADE



Valve Actuator

Designed for use with 2-port and 3-port valves. Features maximum torque, 24VAC bi-directional motor.

Featured Highlights

CVA24 Valve Actuator

- Helps Prevent dead-heading of pumps
- Corrosion-proof enclosure
- Service switch (for flow direction)
- ETL recognized
- UL listed for use with IntelliTouch® Automation
- Operates Compool, Ortega® or Jandy® Valves
- Compatible with all 24VAC Control Systems

CALIFORNIA PROPOSITION 65 WARNING
 ⚠️ **WARNING:** Cancer and Reproductive Harm.
 ⚠️ **AVERTISSEMENT:** Peut Causer le Cancer et des Dommages au Système Reproducteur.
 ⚠️ **ADVERTENCIA:** Cáncer y Daño Reproductivo.
www.p65warnings.ca.gov PH201714

Ordering Information

| Product | Model | Voltage | Cable | Rotation | Compatibility | Motor |
|-----------------------|--------|---------|--------|----------|------------------------------------|----------------|
| VALVE ACTUATOR | | | | | | |
| 263043 | CVA24L | 24 VAC | 3-wire | 90 deg. | 2-port Compool/Ortega/Jandy Valves | Bi-directional |
| 263044 | CVA24Y | 24 VAC | 3-wire | 120 deg. | 3-port Compool PTV2Y Valve | Bi-directional |
| 263045 | CVA24T | 24 VAC | 3-wire | 180 deg. | 3-port Compool/Ortega/Jandy Valves | Bi-directional |

Jandy® is a registered trademark of Jandy Industries, Inc.

GFCI CIRCUIT BREAKERS



GFCI Circuit Breakers

Featured Highlights

- Personnel Protection GFCI
- Meets 2008 to current NEC Standards for Pool Pumps
- Compatible with IntelliTouch® and EasyTouch® Control System
- Designed to protect personnel exposed to ground faults in AC, DC, and mixed AC/DC systems where levels exceed 6 milliamps

Ordering Information

| Product | Description | Carton Qty. | Carton Wt (Lbs.) |
|------------------------------|--------------------|-------------|------------------|
| GFCI CIRCUIT BREAKERS | | | |
| PA215GF | 2-pole 15 amp GFCI | 10 | 11.50 |
| PA220GF | 2-pole 20 amp GFCI | 10 | 11.50 |

CALIFORNIA PROPOSITION 65 WARNING
 ⚠️ **WARNING:** Cancer and Reproductive Harm.
 ⚠️ **AVERTISSEMENT:** Peut Causer le Cancer et des Dommages au Système Reproducteur.
 ⚠️ **ADVERTENCIA:** Cáncer y Daño Reproductivo.
www.p65warnings.ca.gov PH201714

LX80 & LX820 SYSTEMS

COMMERCIAL POOL/SPA CONTROL SYSTEMS

TRADEGRADE

Featured Highlights

LX802 Commercial Pool/Spa Control System

- Emergency Shut-off Switch (disables all pumps)
- Audio Alarm
- Power Center available at the equipment site, features: mechanical time clocks for the Pool and Spa Filter Pumps, power relays (3) for Pool and Spa Filter Pumps and Spa jet Pump, electronic cool-down cycle for pool and spa heaters and equipment service switches

LX8202 Emergency Shut-off System

- Emergency Shut-off Switch
- Audio Alarm
- Power Center at the equipment site with equipment status lights and power relays (2) for Spa Filter Pump and Jet Booster Pump



LX802

Designed for a commercial pool and spa application. Provides Remote Spa Jets switch (suitable for outdoor locations) with electronic countdown timer (15/30 minutes).

CALIFORNIA PROPOSITION 65 WARNING
 ⚠️ **WARNING:** Cancer and Reproductive Harm.
 ⚠️ **AVERTISSEMENT:** Peut Causer le Cancer et des Dommages au Système Reproducteur.
 ⚠️ **ADVERTENCIA:** Cáncer y Daño Reproductivo.
www.p65warnings.ca.gov

Ordering Information

| Product | Circuits | Power Relays Std/Max | Circuit Breaker Capacity | Voltage | Relay Amp Inductive |
|---|-------------------------------------|----------------------|--------------------------|-----------|---------------------|
| LX80 & LX820 COMMERCIAL POOL/SPA CONTROL SYSTEMS | | | | | |
| LX802* | Pool Filter, Spa Filter, Jet1, Jet2 | 3 / 8 | N/A | 115V/230V | 20 |
| LX8202 | *Spa Filter, Jet1, Jet2 | 2 / 3 | N/A | 115V/230V | 20 |

* LX80 and LX820 systems standard relays included are 20 amp 2HP. Part number RLYLX3HP can be ordered if installing a 3HP pump.



LX8202

Designed for retrofitting commercial spas where an emergency shut-off switch is required.

ACCESSORIES FOR LX80 COMMERCIAL POOL/SPA CONTROL SYSTEM

| | |
|----------|---|
| 263045 | Valve Actuator |
| RCS1 | Additional Spa Jets Switch (for multiple jet pumps) |
| ES03 | Emergency Shut-Off Switch w/Audible Alarm |
| RLYLX | Additional Power Relay (for auxiliary equipment) |
| RLYLX3HP | Additional 25 Amp, 3 HP Power Relay (for auxiliary equipment) |
| RYALX | Harness to operate 2 Power Relays from one control circuit |
| TS5L | Solar Temperature Sensor |

ACCESSORIES FOR LX8202 COMMERCIAL POOL/SPA CONTROL SYSTEM

| | |
|----------|---|
| RLYSC | Additional Power Relay (for second jet pump or filter pump) |
| RLYSC3HP | Additional 25 Amp, 3 HP Power Relay (for auxiliary equipment) |

INTELLICHEM® CHEMICAL CONTROLLER

TRADEGRADE



IntelliChem Chemical Controller



Chemical Tanks with on board pumps

The IntelliChem Chemical Controller automatically monitors pool pH and sanitizing levels and delivers just the right amount of chemicals. IntelliChem Chemical Controller can work independently or in conjunction with other Pentair automation products. It's built-in Langelier Saturation Index calculator lets pool owners know when the water is in or out of balance. IntelliChem Chemical Controller uses the same technology found in commercial installations, water parks, hotel and community pools.

Featured Highlights

- Auto Setup/Configuration wizard makes start-up quick and easy
- Programmable chemical feed cycle and mix times for precise water balance
- Assures safe water conditions by preventing excess chemical addition
- Built-in Langelier Saturation Index calculator lets you know when your water chemistry is perfectly in or out of balance
- Minimizes chemical costs by adding chemicals with precision
- Flow sensor ensures chemicals won't feed without system flow
- Password-protected access prevents tampering or accidental program change
- Seamless interface with IntelliTouch®, EasyTouch®, SunTouch® Automation Systems and ScreenLogic2® Interface for superior chemical management
- Compatible with IntelliChlor® Salt Chlorine Generators, external dosing pumps, and CO₂ systems

CALIFORNIA PROPOSITION 65 WARNING

⚠ **WARNING:** Cancer and Reproductive Harm.
 ⚠ **AVERTISSEMENT:** Peut Causer le Cancer et des Dommages au Système Reproducteur.
 ⚠ **ADVERTENCIA:** Cáncer y Daño Reproductivo.
www.p65warnings.ca.gov

Ordering Information

| Product | Description | Application |
|--|---|--|
| INTELLICHEM CHEMICAL CONTROLLER | | |
| 521357 | Controller Only | For systems using external feed pumps, IntelliChlor, or CO ₂ . Containers ordered separately. The 521357 Controller is NSF Listed. |
| 522621 | Controller and Acid Tank with Tank Mounted Pump ^{1,2} | For systems requiring a tank and pump for feeding liquid acid |
| 522622 | Controller and Acid and Chlorine Tanks with Tank Mounted Pumps ^{1,2} | For systems requiring tanks and pumps for feeding liquid acid and chlorine |
| INTELLICHEM CHEMICAL CONTROLLER ACCESSORIES | | |
| 522472 | Acid Tank with Tank Mounted Pump ^{1,2} | Convenient and innovative container for storing and feeding liquid acid. No external pump required. |
| 522473 | Chlorine Tank with Tank Mounted Pump ^{1,2} | Convenient and innovative container for storing and feeding liquid chlorine. No external pump required |
| 521378 | Acid Container ¹ without pump | Convenient and innovative container for storing muriatic acid (must provide separate external pump or can be upgraded with the new pump on tank PN 522474) |
| 521397 | Chlorine Container without pump | Convenient and innovative container for storing chlorine (must provide separate external pump or can be upgraded with the new pump on tank PN 522474) |
| 522480 | Stenner Blue Pump on Tank Tube ² Replacement (2/pk) | Replacement tubes for blue tank mounted pump |
| 522474 | Upgrade Kit for IntelliChem Container | Upgrade older non-pump containers (521378 & 521397) with the new tank mounted pump |
| 522478Z | Upgrade Kit for IntelliChem Controller | Upgrade controller only systems to use the new tank mounted pumps |
| 714000070 | CO ₂ Kit w/Diffuser, Solenoid, Regulator | For systems using CO ₂ to lower pH levels. |
| 521622 | IntelliChem Winterizing Kit | Includes protective end caps and solution for storing pH and ORP probes in freezing climates |
| 521498 | IntelliChem Flash Programming Kit | Upgrade IntelliChem Chemical Controllers to the latest firmware for added functionality and improved performance |

¹Pentair always recommends 1:1 dilution when using full strength muriatic acid.

When mixing, remember to always add acid to water.

²Pentair recommends replacing peristaltic pump tubes every 6 months.

Note: Always try to position container off the equipment pad (if possible).



See page 368–369 for replacement parts.

COMMERCIAL INTELLICHEM®

COMMERCIAL CHEMICAL CONTROLLER

Featured Highlights

- Dual sanitizer support
- Programmable chemical feed cycle and mix times for precise water balance
- Assures safe water conditions by preventing excess chemical addition in a 24 hour period
- Built-in Langelier Saturation Index calculator lets you know when your water chemistry is perfectly in or out of balance
- Flow sensor ensures chemicals won't feed without system flow
- Password-protected access prevents tampering or accidental program change
- Use of ScreenLogic2® on iOS® device offers the ability to keep track of pH, ORP, Temperature and Calculated PPM (cPPM) levels and make adjustments locally or remotely
- Compatible with IntelliChlor® Salt Chlorine Generators, external dosing pumps, and CO₂ systems
- Title-22 Compliant
- IntelliChem Commercial iOS device is available on Apple® App Store®
- 30-day data log storage of pH, ORP, cPPM and temperature
- Battery backup for RealTime Clock (RTC)



Commercial IntelliChem
Chemical Controller

CALIFORNIA PROPOSITION 65 WARNING

⚠️ **WARNING:** Cancer and Reproductive Harm.
 ⚠️ **AVERTISSEMENT:** Peut Causer le Cancer et des Dommages au Système Reproducteur.
 ⚠️ **ADVERTENCIA:** Cáncer y Daño Reproductivo.
www.p65warnings.ca.gov

Ordering Information

| Product | Description | Application |
|--|---|---|
| COMMERCIAL INTELLICHEM CHEMICAL CONTROLLER | | |
| 523478 | IntelliChem Commercial System No pump | The 523478 Controller is ETL Listed to NSF 50 Standard |
| 522577 | IntelliChem Commercial System 1 pump ^{1,2} | Dual sanitization support w/standalone ScreenLogic remote PC and iOS device connectivity. Pre-mounted and pre-wired on 2x2 plastic backboard. Containers ordered separately. The 522577 Controller is ETL Listed to NSF 50 Standard. |
| 522578 | IntelliChem Commercial System 2 pumps ^{1,2} | Dual sanitization support w/standalone ScreenLogic remote PC and iOS device connectivity. Pre-mounted and pre-wired on 2'x2' plastic backboard. Containers ordered separately. The 522578 Controller is ETL Listed to NSF 50 Standard |
| INTELLICHEM CHEMICAL CONTROLLER ACCESSORIES | | |
| 523492Z | Stenner 50GPD External Pump ^{1,2} | 50GPD Stenner pump for feeding liquid acid or chlorine |
| 523493 | Stenner 50GPD Pump Tube 2 pk. ^{1,2} | 50GPD Stenner pump tubes for every 6-month replacement |
| 523494 | Stenner 50GPD Pump Tube 5 pk. ^{1,2} | 50GPD Stenner pump tube for every 6-month replacement |

¹ Pentair always recommends 1:1 dilution when using full strength muriatic acid. When mixing, remember to always add acid to water.

² Pentair recommends replacing peristaltic pump tubes every 6 months. Note: Always try to position container off the equipment pad (if possible).

iOS® is a registered trademark of Cisco Technology, Inc. in the United States and/or other countries.

Apple® and App Store® are registered trademarks of Apple Inc., in the United States and/or other countries.



See page 371 for replacement parts.

INTELLIPH® PH CONTROLLER

CHEMICAL CONTROLLER

TRADEGRADE

eco select®



IntelliPH Controller
Requires IntelliChlor Generator
Version 3 (2010 +)

Featured Highlights

- Protects your pool equipment from corrosion when pH swings in and out of balance
- Acid dispensing rate adjusts with the touch of a button
- Makes sanitizing more effective by eliminating fluctuations in pH level
- Pump style lid seals securely assuring safe operation
- Bolts securely to the equipment pad to prevent poolside acid spills
- Powered by either IntelliChlor® Salt Chlorine Generator Power Center or EasyTouch® or IntelliTouch® Automation system with IntelliChlor Generator support for easy wiring and installation
- UL and cUL listed
- One-year limited warranty on electronics and metering pump
- New pump design allows for tool-less pump tube replacement

IntelliPH Controller is a safe and convenient way to regulate a swimming pool's pH level. It automatically dispenses muriatic acid into the pool to eliminate fluctuations in the pH level. IntelliPH is the perfect companion for the IntelliChlor Salt Chlorine Generator and together they help sanitize and balance pool water to keep it sparkling clear.

Ordering Information

| Product | Description |
|------------------|---|
| INTELLIPH | |
| 521377 | IntelliPH controller with acid container ¹ |
| 522480 | Stenner replacement head pump tubes 2-pk (replace annually) |

¹ Pentair always recommends 1:1 dilution when using full strength muriatic acid. When mixing, remember to always add acid to water.

Note: Always try to position container off the equipment pad (if possible).

*Pentair recommends replacing peristaltic pump tubes every 6 months.



CALIFORNIA PROPOSITION 65 WARNING

- ⚠ **WARNING:** Cancer and Reproductive Harm.
 ⚠ **AVERTISSEMENT:** Peut Causer le Cancer et des Dommages au Système Reproducteur.
 ⚠ **ADVERTENCIA:** Cáncer y Daño Reproductivo.

www.p65warnings.ca.gov

PK 2017-1A

ACU-TROL®

COMMERCIAL CHEMICAL CONTROLLER



Featured Highlights

- AcuCom Software
- Multiple control for 1, 2, or 3 bodies of water
- Programmable pH, ORP and temperature set points
- Programmable proportional fee for precise chemical feed
- Programmable acid, CO₂ or base feed for pH control
- Relay configuration shortcuts with Acu-Trol Controller Wizards
- Auto backwash filters for up to two bodies of water
- Flow cell with built-in flow switch, shut-off valves, inlet strainer and sampling port
- 16 relays with three (3) voltage configurations



AK600

Acu-Trol Chemical Controller is the advanced choice for aquatic facilities worldwide. These efficient systems interface seamlessly to protect, monitor, and manage water chemical balance in aquatic environments and infrastructures. The Acu-Trol Chemical Controller is compatible with the commercial IntelliChlor® Salt Chlorine Generator, Rainbow erosion feeder and/or liquid feed pumps.

Ordering Information

| Part Number | Product Name | Description |
|--|--------------|---|
| AK600 PUMP ROOM CONTROLLER | | |
| 701000170 | AK600PS-A1 | Controller, AK600, 1 Body, pH, ORP, Temp, FC |
| 701000180 | AK600PS-A2 | Controller, AK600, 2 Body, pH, ORP, Temp, FC |
| 701000190 | AK600PS-A3 | Controller, AK600, 3 Body, pH, ORP, Temp, FC |
| TESTING EQUIPMENT | | |
| 755000240 | Duo Check | Test meter, pH/ORP input output |
| SENSORS | | |
| 744000260 | AKpH-FB | Sensor, pH, Blue, BNC, Sensor Only |
| 744000330 | AKORP-FB | Sensor, ORP, Red, BNC, Sensor Only |
| 744000390 | AKORG-FB | Sensor, ORP, Gold Tip, BNC, Sensor Only |
| STENNER PUMPS - STENNER 45 SERIES - SINGLE HEAD | | |
| 751000470 | 45M3-1/4B | Pump, Adj. 1/4 in. Blk tubing 120V 25PSI #3 22GPD |
| STENNER TANKS | | |
| 751002600 | STS15GC | Storage Tank, Chem, 15 gal, UV Gray |
| 751002610 | STS30GC | Storage Tank, Chem, 30 gal, UV Gray |

For proper controller selection, application assistance, technical support, and pricing, please contact your local Pentair Aquatic Systems Representative or contact the factory at 800-831-7133.

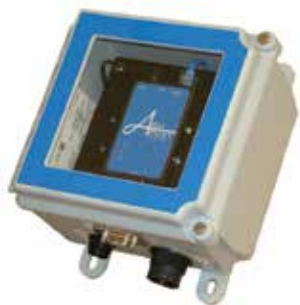
CALIFORNIA PROPOSITION 65 WARNING

⚠️ **WARNING:** Cancer and Reproductive Harm.
 ⚠️ **AVERTISSEMENT:** Peut Causer le Cancer et des Dommages au Système Reproducteur.
 ⚠️ **ADVERTENCIA:** Cáncer y Daño Reproductivo.

www.p65warnings.ca.gov

ACUPORT™ WIRELESS COMMUNICATION

COMMERCIAL CHEMICAL CONTROLLER



AcuPort Wireless Communication

Featured Highlights

- Ethernet, WiFi, or RS-422/485 connectivity options
- Interfaces with the AK110 and AK600
- Easy Windows based installation and configuration
- Dedicated communication with a single controller
- 120VAC power adapter
- Ready-to-use RS-232 serial cable
- Waterproof and corrosion-resistant, easy-to-install enclosures and connectors
- Bidirectional communication and control

Ordering Information

| Part Number | Product Name | Description |
|------------------------------------|--------------|--|
| ACUPORT CHEMICAL CONTROLLER | | |
| 731000010 | AP1000 | AcuPort 1000 RS232 to Ethernet |
| 731000020 | AP1100 | AcuPort 1100 RS232 to wireless or Ethernet |

AKCOLOR™ COLORIMETRIC CHEMICAL FEEDER

COMMERCIAL CHEMICAL CONTROLLER



AKColor Colorimetric Chemical Feeder

Featured Highlights

- Available in Single (compatible with AK110™ and AK600™) or Dual, compatible with AK600 multi-pool water chemistry sensor
- Measures free, total and combined chlorine
- DPD colorimetric measurement technology
- Selectable sample rates
- Compatible with salt chlorine generators
- Interfaces with the AK110 and AK600
- Upgrades available

Ordering Information

| Part Number | Product Name | Description |
|---|--------------|---|
| AKCOLOR COLORIMETRIC CHEMICAL FEEDER | | |
| 741000000 | AKCF * | AKColor Complete Free (Needs 615 Sensor Card) |
| 741000010 | AKCT * | AKColor, Total, Complete Free (Needs 615 Sensor Card) |
| 741000030 | AKDF * | AKColor, Dual Free (Needs 615 and 616 Sensor Card) |

* No Sensor Card