

Available Electronically Only



Automatic Lubrication for Off-Road Equipment

Lubricating Vital Components While Your Vehicle Works



PROVEN QUALITY. LEADING TECHNOLOGY.

Keep Your Machines Working and Maximize Uptime!



A complete range of products for a variety of off-road applications:

- Mining
- Construction
- Forestry
- Quarry
- Scrap Yards
- Concrete
- Asphalt
- Agriculture
- And More!

Fast Payback



Graco® Off-Road Lubrication Systems deliver precise and proportioned amounts of lubricant at frequent intervals, ensuring your pins and chassis components have an optimal grease film at all times.

Increases Uptime and Productivity

- Equipment stays on-site working instead of sitting idle
- Cuts down on unplanned component failure and repair time

Extends Equipment Component Life

- Precise amounts of grease at frequent intervals helps equipment run smoothly and last longer
- Lubrication is applied while your equipment is working—pushing out contaminants and moisture while it works

Saves Time and Lowers Operating Costs

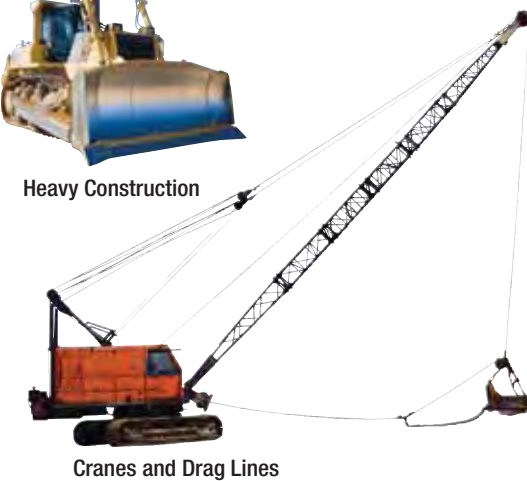
- Reduces labor costs by eliminating manual greasing
- Reduces replacement part and labor costs by extending grease-able component life



Fill it and go!

Easy, Economical Lubrication choice!

Graco equipment keeps you moving!



Equipment designed for the way you work

| Solution | Pump Packages | Metering Technology | | | Standard-Duty | Heavy-Duty | Extreme-Duty |
|-----------------------|---------------|---------------------|---------------|---------------|---------------|------------|--------------|
| | | Injectors | Divider Block | Pump-to-Point | | | |
| MLX | | | | ✓ | ✓ | | |
| Grease Jockey® | ✓ | | | | ✓ | | |
| Tri-Lube™ HD Electric | | | ✓ | | ✓ | ✓ | |
| Fire-Ball® Pneumatic | ✓ | ✓ | ✓ | | ✓ | ✓ | |
| Dyna-Star® Hydraulic | ✓ | ✓ | ✓ | | ✓ | ✓ | |

Standard-Duty

Electric Lubrication System

Designed for simplicity and performance

The Graco 24VDC, MLX system is a compact and rugged pump-to-point system designed for lubricating small and intermediate sized vehicles with up to 12 lube points. Durable, impact-proof and corrosion resistant enclosure for years of dependable operation. Complete packages with all the hardware included to make installation easy. We even provide a reservoir full of NLGI #00 grease to get you moving fast!

Features

- Delivers the right amount of grease at the right time
- Space saving design puts everything in one unit
- Internal controller for simple installation and ease of use
- Standard kits come with pre-charged tubing attached to the pump manifolds
- Electrical connections and harness included for trouble free installation

MLX



Choose the reliable grease reservoir or a convenient, disposable grease cartridge



Skid Steers Forklifts Agriculture

Keep It Moving
With Graco Automatic Lubrication Equipment

Heavy to Extreme-Duty

Electric Lubrication System

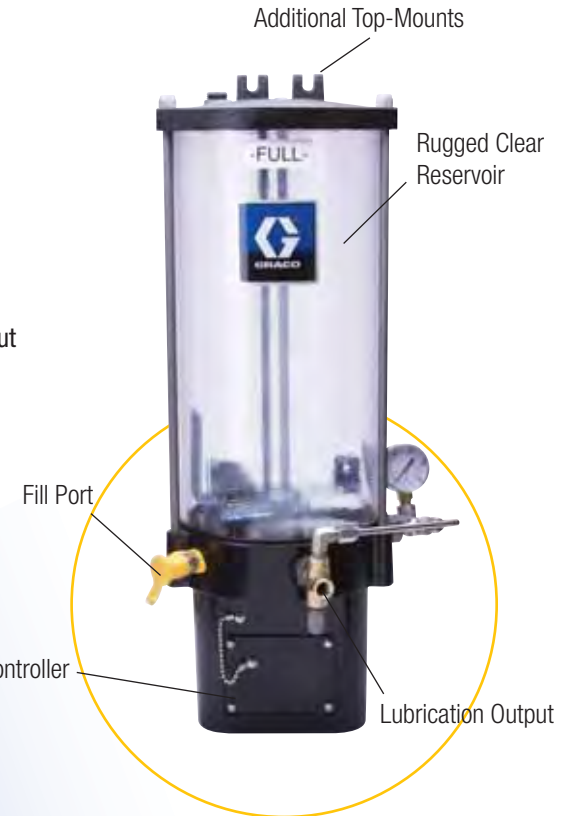
Scalable for all your off-road equipment

The Tri-Lube HD is a heavy-duty, 24 VDC electric grease pump package designed specifically for the off-road market and is ideal for series progressive centralized lubrication systems. Lubricate your machine while it's working to reduce wear and increase component life.

Features

- Pump body can be configured to operate one to three fixed displacement pump cartridges that can feed three different zones or be combined for maximum output
- Reservoir capacities of 13 lb (6 kg), 20 lb (9 kg) and 30 lb (14 kg)
- Designed to deliver up to NLGI #2 at pressures of 3500 psi (238 bar, 23.8 MPa)
- Integral controller for easy system installation, or a remote controller connection offers even more functionality and options
- Low level indicator option stops the pump before the reservoir is empty
- Additional top mounts enable both top and bottom mounting for exceptional strength

Tri-Lube HD



GLC 4400 Controller Optional



LSV, Lean Lube or MSP Divider Blocks



Loaders Haul Trucks Excavators Dozers Dump Trucks

Built Tough
Minimize Unexpected Breakdowns

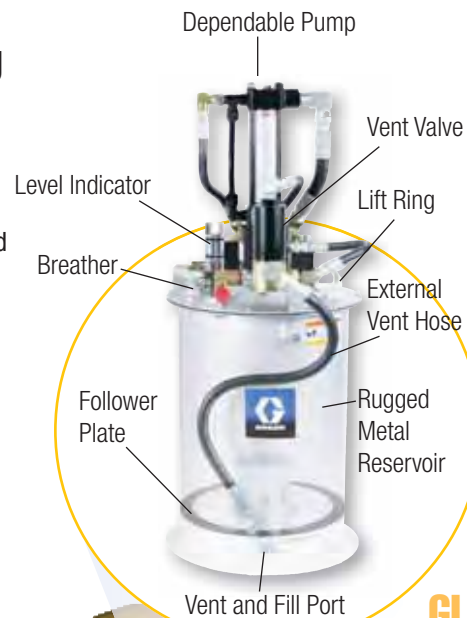
Hydraulic Lubrication System

Dyna-Star 10:1 & 5:1

Long lasting, high pressure performance by tapping into low or high pressure hydraulic circuits

Features

- A wide variety of 60 lb (27 kg), 120 lb (54 kg) and 400 lb (181 kg) pump lengths and 60 lb (27 kg) and 90 lb (41 kg) reservoir options to fit all your off-road equipment
- Pre-configured pumps kits for injector or divider valve-based systems give you maximum flexibility
- Optional Graco controller, level indicator, pressure switch, follower plates and drum covers put you in control of your system—no more second guessing
- Convenient pressure and flow control built-in
- Hydraulic control module—all your controls in one package for easy system setup and maintenance



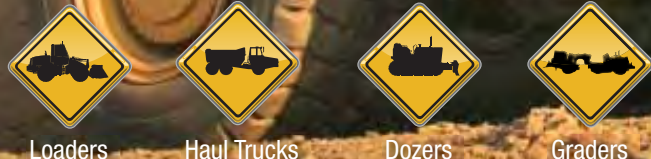
Pressure Switch



GLC 4400 Controller



GL-1 Injectors



Pneumatic Lubrication System

Fire-Ball 300 50:1

Rugged pneumatic pump for years of dependable operation

Graco's pneumatic, mechanical double-acting pump gives you smooth fluid flow and is ideal for equipment with pneumatic engine starters or another on-board pneumatic power source.

Features

- Fewer moving parts for less maintenance, minimal pump wear and low ownership cost
- 90 lb (41 kg) reservoir with convenient bottom fill and vent port for trouble-free filling and venting
- Vent valve included for trouble-free GL injector operation
- Optional Graco controller, level indicator, follower plate, pneumatic solenoid and pressure switch to optimize your system's performance and give added flexibility



GL-1 and GL-11

Injectors

Field-adjustable, high pressure injectors for single line parallel automatic lubrication systems

Fine tune your system with Graco's field adjustable GL-1 and GL-11 high pressure injectors. Combine the output from two to five GL-1 injectors using an output adapter kit or step up to a GL-11 for maximum grease volume.

Features

- Standard visual indicator pins easily monitor injector function
- External grease fitting on the injectors enables convenient troubleshooting and supply line charging
- Uses NLGI #2 grease down to 32° F (0° C)



LSV, Lean Lube™ and MSP

Divider Valves

Options to fit every application and budget

From exact volume delivery to scalable divider blocks, Graco's divider valves give you the flexibility you need. All blocks use NLGI #2 grease or lower viscosities to fit your lubrication needs.

LSV Modular Divider Valves

- Solid blocks offering 6 to 18 outlets for outstanding scalability
- Cycle indicator pins for visual indication of system operation
- Easy system design and installation—simply plug outlets to cross-port output to the next outlet
- Compact for installations with limited space

Lean Lube Modular Divider Valves

- No assembly required with its one piece construction
- 6 to 20 fluid outlets for a wide variety of applications
- Compatible with off-the-shelf fittings and Trabon MSP accessories for full monitoring capability
- Each piston can be singled to double the output to one side of the piston section
- External cross porting on the valve face for additional flexibility
- Minimum operating pressure 350 (20 bar), maximum pressure 4500 psi (310 bar)

MSP Modular Divider Valves

- Fine tune up to 16 grease outputs per block for precise volume delivery
- Monitoring accessories such as cycle and performance indicators for complete monitoring and positive feedback



Controller

GLC 4400 Controller

- Rugged controller to withstand harsh outdoor environments as well as in-plant applications
- Password protected, multi-mode setup to customize operation
- Simple, icon-based interface makes programming easy
- LEDs provide critical feedback at a glance
- Fault indication for low level, cycle indication and machine count
- Diagnostic mode for troubleshooting your system
- Multi-operation modes including pump pulse, continuous or manual run, and pump jog

GLC 4400



MLX 24VDC Kits

| Part Number | Description | # of Points | Output/Cycle 0.015 cu in | Output/Cycle 0.010 cu in | Output/Cycle 0.005 cu in |
|-------------|------------------------------------|-------------|--------------------------|--------------------------|--------------------------|
| 24B309 | MLX Kit with Replaceable Cartridge | 8 | 5 | 3 | |
| 24B307 | MLX Kit with Replaceable Cartridge | 9 | | 6 | 3 |
| 24B310 | MLX Kit with Replaceable Cartridge | 10 | | 6 | 4 |
| 24B308 | MLX Kit with Replaceable Cartridge | 11 | | 6 | 5 |
| 24B313 | MLX Kit with Replaceable Cartridge | 12 | | 4 | 8 |
| 24B311 | MLX Kit with Fill Port | 8 | 5 | 3 | |
| 24B316 | MLX Kit with Fill Port | 9 | | 6 | 3 |
| 24B312 | MLX Kit with Fill Port | 10 | | 6 | 4 |
| 24B315 | MLX Kit with Fill Port | 11 | | 6 | 5 |
| 24B314 | MLX Kit with Fill Port | 12 | | 4 | 8 |

Tri-Lube HD Pump and MSP Divider Valve Kits

Ordering order your Tri-Lube HD in the following configurations:

| Part Number | Description | Pump | Filter | Master Block | Secondary 1 & 2 | Secondary 3 | Secondary 4 | Secondary 5 |
|-------------|---|--------|--------|-----------------|---------------------|---------------------|-------------------------|----------------|
| 563533 | Lubrication Kit, C980G Loader—25 Points | 563531 | 214570 | MSP-20T-15S-30T | MSP-35T-25S-15S | MSP-40T-35T-10T-10S | MSP-40T-10T-30S | MSP-40T-35T-5S |
| 563534 | Lubrication Kit, C988F Loader—25 Points | 563531 | 214570 | MSP-20T-15S-30T | MSP-35T-25S-15S | MSP-40T-35T-10T-10S | MSP-40T-10T-30S | MSP-40T-35T-5S |
| 563535 | Lubrication Kit, C773D Haul Truck—25 Points | 563531 | 214570 | MSP-35T-15S-35S | MSP-20S-25T-15S-25T | MSP-10S-10S-20S | MSP-40T-20T-20T-15T-30T | N/A |

Tri-Lube HD Pump Kits

For greater flexibility, order your Tri-Lube HD pump from the following:

| Part Number | Reservoir Size | Number of Pump Elements | Controller Option | Low Level Sensing |
|-------------|----------------|-------------------------|------------------------------|-------------------|
| 563529 | 13 lb. | 3 | Remote Controller Connection | No |
| 563528 | 20 lb. | 1 | Integral Controller | Yes |
| 564407 | 20 lb. | 1 | None | Yes |
| 563531 | 20 lb. | 2 | Integral Controller | Yes |
| 563532 | 20 lb. | 3 | Integral Controller | No |
| 563530 | 30 lb. | 3 | Integral Controller | No |

Tri-Lube HD Components and Accessories

Mix and match for custom installations from the following:

| Part Number | Description |
|-------------|----------------------------------|
| 563536 | Base Pump Drive Assembly |
| 563538 | Pump Element |
| 563543 | Reservoir Kit - 13 lbs |
| 563541 | Reservoir Kit - 20 lbs |
| 563542 | Reservoir Kit - 30 lbs |
| 563544 | Integral Controller Kit |
| 563545 | Remote Controller Connection Kit |
| 563548 | Scraper with Low Level Sensor |
| 214570 | Lubrication Filter |

LSV Series Ordering Information

LSV Modular Divider Valves

| Part Number | Maximum Outlets | Inlet/Outlet Size | Cycle Indicator Pin |
|-------------|-----------------|-------------------|---------------------|
| 24B158 | 6 | 1/8" BSPP | No |
| 24B159 | 6 | 1/8" BSPP | Yes |
| 24B160 | 6 | 1/8" NPTF | Yes |
| 24B161 | 8 | 1/8" BSPP | No |
| 24B162 | 8 | 1/8" BSPP | Yes |
| 24B163 | 8 | 1/8" NPTF | Yes |
| 24B164 | 10 | 1/8" BSPP | No |
| 24B165 | 10 | 1/8" BSPP | Yes |
| 24B166 | 10 | 1/8" NPTF | Yes |
| 24B167 | 12 | 1/8" BSPP | No |
| 24B168 | 12 | 1/8" BSPP | Yes |
| 24B169 | 12 | 1/8" NPTF | Yes |
| 24B170 | 14 | 1/8" BSPP | No |
| 24B251 | 14 | 1/8" BSPP | Yes |
| 24B252 | 14 | 1/8" NPTF | Yes |
| 24B171 | 16 | 1/8" BSPP | No |
| 24B253 | 16 | 1/8" BSPP | Yes |
| 24B254 | 16 | 1/8" NPTF | Yes |
| 24B172 | 18 | 1/8" BSPP | No |
| 24B255 | 18 | 1/8" BSPP | Yes |
| 24B256 | 18 | 1/8" NPTF | Yes |

Technical Specifications

| | |
|------------------------------------|--|
| Minimum/Maximum Operating Pressure | 350/5076 psi (24/350 bar) |
| Output per Cycle per Outlet | 0.012 in ³ (0.2 cm ³) |

Note: Outlets 1 and 2 must be used to allow proper system functionality.

LSV Accessories

| | |
|--|---|
| 123145 | Outlet Cross Port Plug |
| Outlet Adapters for 1/4" OD Steel or Nylon Tubing Compression Style with Check Valve | |
| 24B746 | Complete Assembly |
| Components | |
| 123054 | Ferrule 1/4" |
| 123055 | Compression Nut |
| 123056 | Check Valve Body |
| 123057 | Clamping Rings |
| Outlet Adapters for 1/4" OD Steel or Nylon Tubing Compression Style without Check Valve | |
| 24B747 | Complete Assembly |
| Components | |
| 123057 | Clamping Ring |
| 123058 | Compression Nut |
| Outlet Adapters for 1/8" NPT Female | |
| 123059 | Outlet Adapter with Check Valve |
| 123060 | Outlet Adapter w/o Check Valve |
| 123057 | Clamping Ring |
| Outlet Adapters Push-to-Connect Style for 1/4" OD Nylon Tubing | |
| 123061 | Outlet Adapter with Check Valve |
| 123062 | Outlet Adapter w/o Check Valve |
| Outlet Adapters Push-to-Connect Style for 1/8" Hose | |
| 123063 | Outlet Adapter for 1/8" Hose with Check Valve |

Lean Lube Series Ordering Information

| Part Number | | | | | | Maximum Outlets | Inlet/Outlet Size | Cycle Pin Indicator |
|-------------------|-----------------|-------------------|-----------------|-------------------|-----------------|-----------------|-------------------|---------------------|
| 10T* | | 15T** | | 20T*** | | | | |
| Zinc Plated Steel | Stainless Steel | Zinc Plated Steel | Stainless Steel | Zinc Plated Steel | Stainless Steel | | | |
| 257175 | 258454 | 257206 | 258470 | 257236 | 258486 | 6 | 1/8" BSPP | No |
| 257167 | 258446 | 257198 | 258462 | 257228 | 258478 | 6 | 1/8" NPTF | No |
| - | - | 257265 | 258502 | 257280 | 258518 | 6 | 1/8" BSPP | Yes |
| - | - | 257258 | 258494 | 257272 | 258510 | 6 | 1/8" NPTF | Yes |
| 257176 | 258455 | 257207 | 258471 | 257237 | 258487 | 8 | 1/8" BSPP | No |
| 257168 | 258447 | 257199 | 258463 | 257229 | 258479 | 8 | 1/8" NPTF | No |
| - | - | 257266 | 258503 | 257281 | 258519 | 8 | 1/8" BSPP | Yes |
| - | - | 257259 | 258495 | 257273 | 258511 | 8 | 1/8" NPTF | Yes |
| 257177 | 258456 | 257208 | 258472 | 257238 | 258488 | 10 | 1/8" BSPP | No |
| 257169 | 258448 | 257200 | 258464 | 257230 | 258480 | 10 | 1/8" NPTF | No |
| - | - | 257267 | 258504 | 257282 | 258520 | 10 | 1/8" BSPP | Yes |
| - | - | 257260 | 258496 | 257274 | 258512 | 10 | 1/8" NPTF | Yes |
| 257178 | 258457 | 257209 | 258473 | 257239 | 258489 | 12 | 1/8" BSPP | No |
| 257170 | 258449 | 257201 | 258465 | 257231 | 258481 | 12 | 1/8" NPTF | No |
| - | - | 257268 | 258505 | 257283 | 258521 | 12 | 1/8" BSPP | Yes |
| - | - | 257261 | 258497 | 257275 | 258513 | 12 | 1/8" NPTF | Yes |
| 257179 | 258458 | 257210 | 258474 | 257240 | 258490 | 14 | 1/8" BSPP | No |
| 257171 | 258450 | 257202 | 258466 | 257232 | 258482 | 14 | 1/8" NPTF | No |
| - | - | 257269 | 258506 | 257284 | 258522 | 14 | 1/8" BSPP | Yes |
| - | - | 257262 | 258498 | 257276 | 258514 | 14 | 1/8" NPTF | Yes |
| 257180 | 258459 | 257211 | 258475 | 257241 | 258491 | 16 | 1/8" BSPP | No |
| 257172 | 258451 | 257203 | 258467 | 257233 | 258483 | 16 | 1/8" NPTF | No |
| - | - | 257270 | 258507 | 257285 | 258523 | 16 | 1/8" BSPP | Yes |
| - | - | 257263 | 258499 | 257277 | 258515 | 16 | 1/8" NPTF | Yes |
| 257181 | 258460 | 257212 | 258476 | 257242 | 258492 | 18 | 1/8" BSPP | No |
| 257173 | 258452 | 257204 | 258468 | 257234 | 258484 | 18 | 1/8" NPTF | No |
| - | - | 257271 | 258508 | 257286 | 258524 | 18 | 1/8" BSPP | Yes |
| - | - | 257264 | 258500 | 257278 | 258516 | 18 | 1/8" NPTF | Yes |
| 257182 | 258461 | 257213 | 258477 | 257243 | 258493 | 20 | 1/8" BSPP | No |
| 257174 | 258453 | 257205 | 258469 | 257235 | 258485 | 20 | 1/8" NPTF | No |
| - | - | 257294 | 258509 | 257287 | 258525 | 20 | 1/8" BSPP | Yes |
| - | - | 257293 | 258501 | 257279 | 258517 | 20 | 1/8" NPTF | Yes |

* 10T - Twin Output 0.010 cm³ Per Each Outlet / Singled Output 0.020 cm³ One Outlet
 ** 15T - Twin Output 0.015 cm³ Per Each Outlet / Singled Output 0.030 cm³ One Outlet
 *** 20T - Twin Output 0.020 cm³ Per Each Outlet / Singled Output 0.040 cm³ One Outlet

Technical Specifications

| | |
|------------------------------------|---------------------------|
| Minimum/Maximum Operating Pressure | 350/4500 psi (24/310 bar) |
|------------------------------------|---------------------------|

Lean Lube Accessories

| Part Number | Description |
|-------------|---------------------------------------|
| 24B607 | Cross Porting Kit - Zinc Plated Steel |
| 24B909 | Cross Porting Kit - Stainless Steel |
| 122831 | Outlet Plug - Zinc Plated Steel |
| 123205 | Outlet Plug - Stainless Steel |

Note: MSP accessories will work with Lean Lube

Dyna-Star 10:1 Modules and Kits

| | |
|--------|--|
| 247574 | 60 lb (27 kg) Pump Module - Injector - Overall height 35.15 in (842mm). Includes pump (247540), reservoir assembly (247575), hydraulic control assembly (247538) and vent valve assembly (243170) fully assembled. |
| 247706 | 60 lb (27 kg) Pump Kit - Divider Valve (DV) - Overall height 35.15 in (842mm). Includes pump (247540), reservoir assembly (247575) and hydraulic control assembly (247538) not assembled. |
| 247444 | 90 lb (41 kg) Pump Module - Injector - Overall height 42.75 in (1086 mm). Includes pump (247443), reservoir assembly (241486), hydraulic control assembly (247538) and vent valve assembly (243170) fully assembled. |
| 247707 | 90 lb (41 kg) Pump Kit - DV - Overall height 42.75 in (1086 mm). Includes pump (247443), reservoir assembly (241486) and hydraulic control assembly (247538) not assembled. |
| 247902 | Pressure Relief Kit for 247706 and 247707 hydraulic pumps |
| 312349 | Instruction, repair and parts manual for 247574, 247706, 247444, 247707 |

Dyna-Star 10:1 Refinery Drum And Custom Tank Applications

| Description | Refinery Drums | | Custom Tank Applications | | | | | |
|--------------------------------------|-----------------|-----------------|--------------------------|-----------------|-----------------|-----------------|-----------------|-----------------|
| | Weight lbs (kg) | Weight lbs (kg) | Weight lbs (kg) | Weight lbs (kg) | Weight lbs (kg) | Weight lbs (kg) | Weight lbs (kg) | Weight lbs (kg) |
| Divider Valve (DV) or Injector Based | DV | DV | Injector | DV | Injector | DV | Injector | DV |
| Pump | 247443 | 247450 | 247540 | 247540 | 247443 | 247443 | 247450 | 247450 |
| Hydraulic Control ⁽¹⁾ | 247705 | 247705 | 247538 | 247538 | 247538 | 247538 | 247538 | 247538 |
| Vent Valve | | | 243170 | | 243170 | | 243170 | |
| Cover | 247703 | 247704 | | | | | | |
| Follower Plate | 247701 | 247702 | | | | | | |
| Pump Gasket | 15M442 | 15M442 | 15M442 | 15M442 | 15M442 | 15M442 | 15M442 | 15M442 |
| Custom Tank Kit ⁽²⁾ | | | 247970 | | 247456 | | 247457 | |

⁽¹⁾ Hydraulic control assembly (247705) includes longer hoses to enable remote mounting.

⁽²⁾ Kits include pump (24750, 247443 or 247450), hydraulic control assembly (247538), vent valve (243170) and pump gasket (15M442).

Dyna-Star Module and Kit Accessories

| | |
|--------|--|
| 247700 | Follower plate for 60 lb (27 kg) and 90 lb (41 kg) modules |
| 244023 | Level indicator for 60 lb (27 kg) and 90 lb (41 kg) modules* |
| 24B591 | GLC 4400 12/24 VDC Controller |
| 115124 | Pressure switch |

* Follower plate 247700 required for level indicator 244023 to function

Fire-Ball 300 and Dyna-Star 5:1 Modules and Accessories

| | |
|--------|---|
| 241573 | Fire-Ball 300, 50:1 90 lb (41 kg) Pump Module. Includes pump (239887), reservoir assembly (241486) and vent valve assembly (241572). |
| 241485 | Follower plate (fits 241573). |
| 243159 | Dyna-Star 5:1 90 lb (41 kg) Pump Module. Includes pump (224751), reservoir assembly (241486), hydraulic control assembly (243501) and vent valve assembly (243170). |
| 243191 | Follower plate (fits 243159). |

MSP Working Sections

| Part Number | Description | |
|-------------|-----------------------------|-------------------------------------|
| | Without Cycle Pin Indicator | With Right Hand Cycle Pin Indicator |
| 562720 | MSP-5T | - |
| 562711 | MSP-5S | - |
| 562721 | MSP-10T | - |
| 562712 | MSP-10S | - |
| 562722 | MSP-15T | - |
| 562713 | MSP-15S | - |
| 562723 | MSP-20T | 562739 |
| 562714 | MSP-20S | 562729 |
| 562724 | MSP-25T | 562740 |
| 562715 | MSP-25S | 562730 |
| 562725 | MSP-30T | 562741 |
| 562716 | MSP-30S | 562731 |
| 562726 | MSP-35T | 562742 |
| 562717 | MSP-35S | 562732 |
| 562727 | MSP-40T | 562743 |
| 562718 | MSP-40S | 562733 |

Must be ordered in multiples of 5

GL Injectors

| Part Number | Description |
|-------------|-----------------------------------|
| 114901 | One GL-1 Injector and Manifold |
| 114902 | Two GL-1 Injectors and Manifold |
| 114903 | Three GL-1 Injectors and Manifold |
| 114904 | Four GL-1 Injectors and Manifold |
| 114905 | Five GL-1 Injectors and Manifold |
| 114909 | Replacement GL-1 Injector |
| 24A918 | GL-11 Injector |

GL Injectors Technical Specifications

| | |
|----------------------------|--|
| Reset Pressure | 600 psi (41 bar) |
| Minimum Operating Pressure | |
| GL-1 | 1,850 psi (127 bar) |
| GL-11 | 1,000 psi (69 bar) |
| Normal Operating Pressure | 2,500 psi (172 bar) |
| Maximum Pressure | 3,500 psi (241 bar) |
| Output Range* | |
| GL-1 | 0.05 - 0.500 in ³ (0.82 - 8.2 cm ³) |
| GL-11 | 0.008 - 0.8 in ³ (0.13 - 13.1 cm ³) |

* Limited by operating temperatures and lubricant additives

MSP Tie Rods, Nuts and Accessories

| Part Number | Description |
|-------------|--------------------------------------|
| 557731 | 3 - Section Tie Rod for MSP |
| 557732 | 4 - Section Tie Rod for MSP |
| 557733 | 5 - Section Tie Rod for MSP |
| 557734 | 6 - Section Tie Rod for MSP |
| 557735 | 7 - Section Tie Rod for MSP |
| 557736 | 8 - Section Tie Rod for MSP |
| 556371 | Tie Rod Nut |
| 557349 | Outlet Plug, Dry seal 1/8 NPTF |
| 563175 | Pressure Relief - 2500 psi (172 bar) |

Three tie rods are needed for each block assembly

MSP Inlet, Intermediate & Base Sections

| Part Number | Description |
|-------------|--------------------------------------|
| 560919 | MSP Inlet, 1/4 - 18 NPSF Ports (NPT) |
| 563419 | MSP Intermediate Base 18 - 27 |
| 563428 | MSP Standard End |

Must be ordered in multiples of 5



Graco Now Offers a Bigger Line of Products to Serve You Better.



GL Injector Accessories

| Part Number | Description |
|-------------|---|
| 115120 | GL-1 Injector Outlet Adaptor Kit |
| 115119 | GL-1 Clear Plastisol Injector Cover |
| 114906 | GL-1 and GL-11 Zerk Fitting and Cap Kit |



ABOUT GRACO

PROVEN QUALITY. LEADING TECHNOLOGY.

Founded in 1926, Graco is a world leader in fluid handling systems and components. Graco products move, measure, control, dispense and apply a wide range of fluids and viscous materials used in vehicle lubrication, commercial and industrial settings.

The company's success is based on its unwavering commitment to technical excellence, world-class manufacturing and unparalleled customer service. Working closely with qualified distributors, Graco offers systems, products and technology that set the quality standard in a wide range of fluid handling solutions. Graco provides equipment for spray finishing, protective coating, paint circulation, lubrication, and dispensing sealants and adhesives, along with power application equipment for the contractor industry. Graco's ongoing investment in fluid management and control will continue to provide innovative solutions to a diverse global market.

GRACO LOCATIONS

MAILING ADDRESS

P.O. Box 1441
Minneapolis, MN 55440-1441
Tel: 612-623-6000
Fax: 612-623-6777

AMERICAS

MINNESOTA

Worldwide Headquarters
Graco Inc.
88-11th Avenue N.E.
Minneapolis, MN 55413

EUROPE

BELGIUM

European Headquarters
Graco N.V.
Industrieterrein-Oude Bunders
Slakweidestraat 31
3630 Maasmechelen,
Belgium
Tel: 32 89 770 700
Fax: 32 89 770 777

ASIA PACIFIC

AUSTRALIA

Graco Australia Pty Ltd.
Suite 17, 2 Enterprise Drive
Bundoora, Victoria 3083
Australia
Tel: 61 3 9467 8558
Fax: 61 3 9467 8559

CHINA

Graco Hong Kong Ltd.
Shanghai Representative Office
Room 118 1st Floor
No.2 Xin Yuan Building
No.509 Cao Bao Road
Shanghai, 200233
The People's Republic of China
Tel: 86 21 649 50088
Fax: 86 21 649 50077

INDIA

Graco Hong Kong Ltd.
India Liaison Office
Room 432, Augusta Point
Regus Business Centre 53
Golf Course Road
Gurgaon, Haryana
India 122001
Tel: 91 124 435 4208
Fax: 91 124 435 4001

JAPAN

Graco K.K.
1-27-12 Hayabuchi
Tsuzuki-ku
Yokohama City, Japan 2240025
Tel: 81 45 593 7300
Fax: 81 45 593 7301

KOREA

Graco Korea Inc.
Shinhan Bank Building
4th Floor #1599
Gwanyang-Dong, Dongan-Ku,
Anyang-si, Korea 431-060
Tel: 82 31 476 9400
Fax: 82 31 476 9801

SALES/ DISTRIBUTION/ SERVICE

Call today for product information or to request a demonstration.

800-533-9655 or visit us at www.graco.com.

Graco Inc. is registered to I.S. EN ISO 9001

North America
Customer Service
800-533-9655
Fax 800-533-9656