

CO HOSTS:



# AVCJ ESG Forum

15 November 2021, Hong Kong and Online

## FORUM REVIEW



Lead Sponsor



Co-Sponsors



The 7th annual **AVCJ ESG Forum** successfully took place in-person in Hong Kong and virtually on 15 November.

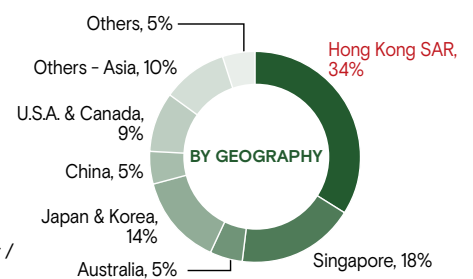
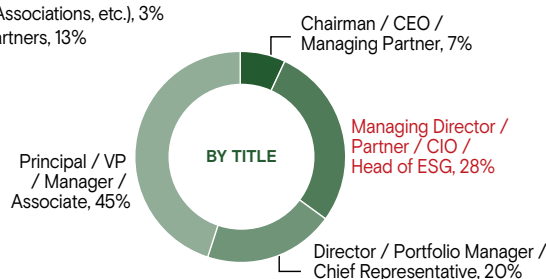
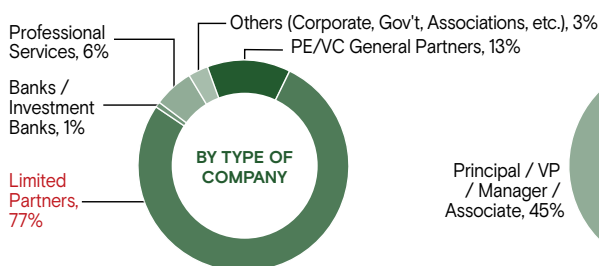
The event brought together over 640+ private equity professionals including 500+ LPs, representing 355+ different organizations from 28 geographies. The forum was opened by a fireside chat with David Yeung, Founder & CEO of Green Monday Group, offering insights into the conversion of sustainability, investment and business.

The forum covered topics including drivers for ESG integration in Asia, climate change and private equity, carbon neutral opportunities in China, how to enable better corporate governance, human capital, net zero commitments and LP expectations on ESG.

The AVCJ ESG Forum returns in November 2022.

## 2021 Delegate composition

- **500+** Limited Partners from Hong Kong and overseas
- **36** Speakers
- **640+** participants from **28** geographies and **355+** companies



# Speakers

## Keynote

- **David Yeung**  
Founder & CEO  
**GREEN MONDAY**



## Senior Industry Professionals

- **Hoda Abou-Jamra**  
Founding Partner  
**TVM CAPITAL**  
**HEALTHCARE**
- **Adam Black**  
Partner, Head of ESG & Sustainability  
**COLLER CAPITAL**
- **Tim Burroughs**  
Managing Editor  
**ASIAN VENTURE CAPITAL**  
**JOURNAL**
- **Kushal Chadha**  
Partner & Asia Pacific ESG Lead for Deals & Private Equity  
**PWC**
- **Doug Coulter**  
Partner  
**LGT CAPITAL PARTNERS**
- **Pratima Divgi**  
Regional Director  
**CDP**
- **Peter Dunbar**  
Private Equity Senior Specialist  
**PRINCIPLES FOR RESPONSIBLE INVESTMENT**
- **Robert G. Eccles**  
Visiting Professor of Management Practice-Saïd Business School  
**UNIVERSITY OF OXFORD**
- **Frankie Fang**  
Founding Managing Partner  
**STARQUEST CAPITAL**
- **Pamela Fung**  
Executive Director  
**MORGAN STANLEY INVESTMENT MANAGEMENT**
- **Purnima Gandhi**  
Vice President  
**TEMASEK INTERNATIONAL**
- **Bart Gombert**  
Managing Director & Asia General Counsel Private Equity  
**BAIN CAPITAL**
- **Jie Gong**  
Partner  
**PANTHEON**
- **Jana Jevcakova**  
Managing Director, Corporate Governance  
**MORROW SODALI**
- **David Katz**  
Director of Public Affairs, Asia Pacific  
**KKR**
- **Alex Lui**  
Managing Director  
**OLYMPUS CAPITAL**
- **Shirley Ma**  
Senior Portfolio Manager, Private Equity  
**APG ASSET MANAGEMENT**



- **Liza McDonald**  
Head of Responsible Investments  
**AWARE SUPER**
- **Olivier Menard**  
Head of the Green & Sustainable Hub, Asia Pacific  
**NATIXIS**
- **Carmela Mondino**  
Head of the ESG & Sustainability  
**PARTNERS GROUP**
- **Natasha Morris**  
Director  
**ADAMANTEM CAPITAL**
- **Loretta Ng**  
Partner, ESG – Climate and Sustainability  
**PWC**
- **Steven Okun**  
Southeast Asia Senior Advisor  
**GPCA**
- **Joel Posters**  
Head of Investment Stewardship and ESG  
**FUTURE FUND**
- **Mukund Rajan**  
Chairman  
**ECUBE INVESTMENT ADVISORS**
- **Scott Reinhart**  
Founder & Managing Director  
**BRAWN CAPITAL**
- **Jo Saleeba**  
Head of Sustainability  
**NEW FORESTS**
- **Jaclyn Seow**  
Head of ESG & Impact  
**OPENSOURCE VENTURES**
- **Anders Strömlad**  
Head of Alternative Investments  
**AP2**
- **Jun Tsusaka**  
CEO, CIO and Chairperson of the ESG Committee  
**NSSK**
- **Sophie Walker**  
Head of Sustainability – Private Capital  
**EQT**
- **Paul Yett**  
Director of ESG & Sustainability  
**HAMILTON LANE**
- **Martin Yung**  
Principal  
**HARBOURVEST PARTNERS (ASIA) LIMITED**
- **Nakul Zaveri**  
Managing Partner  
**RELATIVITY INVESTMENT MANAGEMENT**
- **Ian Zhu**  
Managing Partner  
**NIO CAPITAL**



# Delegate Companies

- 18 Salisbury Capital
- Allianz Capital Partners
- Alpine Capital Advisors
- Alternative Investment Capital
- Alys Capital
- Amcor
- AMP Capital
- Anbang Group
- Anchor Equity Partners
- Antarctica Asset Management
- Aozora Bank
- AP2
- APES Pongo LP I
- APG Asset Management
- Ardian
- Ares SSG Capital Management
- Arete Capital Asia
- Ascendent Capital Partners
- Asia Alpha
- Asia Capital Advisor
- Asia Clean Tech Energy Investments
- Asia Heritage
- Asian Development Bank
- Asian Infrastructure Investment Bank
- Asset Management One
- Assicurazioni Generali
- Aster Capital
- Atlas Asset Management
- Aware Super
- AXA Life Insurance
- Axiom Asia Private Capital
- Azalea Asset Management
- Azalea Investment Management
- B Capital Group
- Bain & Company
- Bain Capital
- Bank of Singapore
- Banque Cantonale de Geneve
- Baring Private Equity Asia
- Beijing Equity Investment Development Management
- Benli Capital
- Bessemer Trust
- Bin Zayed Venture
- BlackRock
- BNP Paribas
- Boston University
- Boyu Capital
- Brawn Capital
- British Columbia Investment Management Corporation
- Brunswick Group
- CA Indosuez
- Cabot Capital Partners
- Cambiata Schweiz
- Capital Dynamics
- Caravel Group
- Cathay Life
- CDC Group
- CDP
- CDPQ
- Charles Stewart Mott Foundation
- China Asean Fund
- China Grand Prosperity Investment
- China Investment Corporation
- China Life Capital Investment Company Limited
- China Life Investment Holding Company Limited
- China Tourism Group
- China-UAE Investment Cooperation Fund
- Chiomenti
- Chow Tai Fook Enterprises
- ChrysCapital
- CIFIC Asset Management
- CIGP
- City of Stamford
- CM Capital Advisors
- Colgate University
- Collier Capital
- Concordia University
- CPPIB
- CRE Alliance
- CreditEase
- CreditEase Fintech Investment Fund
- Cross Harbour
- Daido Life Insurance Company
- Dai-ichi Life Insurance
- DBJ Asset Management
- DBJ Investment Consulting
- Dentons
- Destra Investment Advisory
- Development Bank of Japan
- Development Finance Corporation (DFC)
- Eastspring Investments
- EBRD
- ECube Investment Advisors
- EDBI
- Eight Rivers Group
- EmergeVest
- Empire Holdings Worldwide
- Employees Provident Fund
- EQT
- Evergreen Sonamu Partners
- Exelon Corporation Pension
- Finsbury Glover Hering
- Flexstone Partners
- Fort Worth Employees' Retirement Fund
- FountainVest Partners
- Foxconn
- Franklin Templeton Private Equity
- Frontier Advisors
- Fubon Life
- Fullerton Fund Management
- FUNCEF – Fundação dos Economiaros federais
- Future Fund
- FWD Life Insurance
- Gaw Capital
- GCM Grosvenor
- Generali
- Georgieff Capital
- German Investment Corporation (DEG)
- GGV Capital
- Global Alternative Funds
- Goldman Sachs
- Good Point Development
- Gopher Asset Management
- GPCA
- Great Wall AMC
- Green Monday
- Gunung Capital
- Hamilton Lane
- Hana Financial Group
- Hanwha Asset Management
- HarbourVest Partners
- Harvest Investments
- Hectoron Global Capital Management
- Heliconia Capital Management
- Hendale
- Heritage Group
- HESTA
- Hogan Lovells Lee & Lee
- Hong Kong Housing Society
- Hong Kong Investment Funds Association
- Hong Kong Monetary Authority (HKMA)
- HT Capital
- Huatai International
- IA Partners
- IDG Capital
- IDI Emerging Markets Partners
- IFC Asset Management Company
- Indiana University Health
- Innovative Directions
- International Finance Corporation
- J.P. Morgan Asset Management
- Japan Investment Corporation
- Japan Post Life Insurance
- JP Morgan Private Equity Group
- JRT Partners
- Juno Capital
- KAUST Investment Management
- KB Securities
- Khazanah Nasional
- KHK & Partners
- Kibo Invest
- KIC
- Kimera
- KKR
- Korea Growth Investment
- KPMG
- KTB Private Equity
- Kumpulan Wang Persaraan (Diperbadankan)
- LCY Group
- Legend Capital Management
- LFX Digital
- LGT Capital Partners
- Liberty Mutual Investments
- LionRock Capital
- LKK Health Products
- Los Angeles Fire and Police Pensions
- Macalester College
- Manulife Investment Management
- Manulife Private Markets



- Marubeni Corporation
- Maryland State Retirement and Pension System
- Max Planck Foundation
- Maxdo Finance
- Mayer Brown
- MCP Asset Management
- Meketa Investment
- Mercer
- MetLife
- Metrics Credit Partners
- Mitsubishi UFJ Trust and Banking
- Mitsui & Co
- Miven Family Office
- Mizuho Capital
- Mizuho Securities
- Moment Fintech
- Monarch Holdings
- Moravia Capital Investments
- Mordril Investments
- Morgan Creek
- Morgan Stanley Investment Management
- Morrison & Foerster
- Morrow Sodali
- MPM Capital
- Mueller Asia
- MUFG Bank
- National Credit Union Federation of Korea (NCUFOK)
- National Investment Corporation of the National Bank of Kazakhstan
- National Pension Service
- Natixis
- New Forests
- New World Development
- NF Trinity
- NH Investment & Securities
- NIO Capital
- Nippon Wealth Life Insurance
- Nissay Asset Management
- Noah Holdings
- Nomura Asset Management
- Nomura Funds Research and Technologies
- Norinchukin Zenkyoren Asset Management
- North East Private Equity
- Northwestern University
- Novo Holdings
- NSSK
- Nullabor Holdings
- Nuri Holdings
- Old Mutual
- Olympus Capital
- OneVentures
- Ontario Teachers' Pension Plan
- Openspace Ventures
- Opticrest SA
- ORIX Asia Capital
- ORIX Corporation
- ORIX Life Insurance Corporation
- Oropos GmbH
- Pacific Equity Partners
- PAG
- Pagoda Capital
- Pantheon
- Partners Group
- Pathway Capital Management
- Pavilion Capital
- Peninsula House
- Pennsylvania Public School Employees' Retirement System
- Permodalan Nasional Berhad (PNB)
- Petiole Asset Management
- PGGM Private Equity
- Phillips Academy Andover
- PineBridge
- Ping An
- Pioneer Generation Group of Companies
- Potentum Partners
- Preqin
- Primavera Capital
- Principles for Responsible Investment
- Privos Capital
- Prodigy Capital Management
- Prudential Corporation Asia
- PwC
- QIC
- Quantum
- Relativity Investment Management
- Resona Bank
- Restaurant Brands International (RBI)
- Riviera Investments
- ROC Partners
- Rothschild & Co
- Royal Fund Management
- RS Group
- SCA
- Scatec
- SeaTown Holdings
- SEDCO Capital
- Sen Family Office
- Shanda Group
- ShawKwei & Partners
- Shinhan Bank
- Shun Hing Capital
- Siguler Guff
- Silk Road Fund
- Sime Darby Motor
- Simpson Thacher & Bartlett
- Sinochem Capital
- Smithsonian Institution
- SMTB
- Sofina Group
- SOMPO Asset Management
- Stahl Associates
- Starquest Capital
- State Street Global Advisors
- Stepstone Global
- StepStone Group
- Sterling Private Management
- Strategic Advantage
- Strong Grace
- Sudarskis & Partners
- Sumitomo Corporation
- Sumitomo Life Insurance Company
- Sumitomo Mitsui Banking Corporation
- Sumitomo Mitsui DS Asset Management
- Sumitomo Mitsui Finance and Leasing
- Sumitomo Mitsui Trust Bank
- Sun Hung Kai & Co
- Sun Hung Kai Properties Direct Investments
- SunSuper
- Taiping Securities
- Taiwan Life Insurance
- Talisman Global
- Tattarang
- TAU Investment Management
- Telenor Group
- Temasek International
- Terry Gou's Family Office
- Texas Tech University System Office of Investments
- The Andrew W. Mellon Foundation
- The Carlyle Group
- The Cross-Harbour Holdings
- The David & Lucile Packard Foundation
- The Export Import Bank of Korea
- The Great Eastern Life Assurance
- The Guardian Life Insurance Company of America
- The Industrial Bank of Kuwait KSC
- The Kresge Foundation
- The New Amsterdam Group
- The Nomura Trust and Banking
- Ti Holdings
- Tockington Capital
- Tokio Marine & Nichido Fire Insurance
- Tokyo Metropolitan Government
- Tokyo University of Science
- Tor Investment Management
- TPG
- Transdale Investment
- Trinity Health
- Trinity Capital
- TVM Capital Healthcare Partners
- UBS Alternative Portfolio
- Unigestion
- UniGlobe Capital
- Uniting Financial Services
- University of Oxford
- UTM Management
- Vision Super
- Vistra
- Wah Hin & Co
- Wells Fargo Strategic Capital
- West Japan Machinery Pension Fund
- Wilshire Associates
- Wishland Capital
- Woori Bank
- WSIB
- XCap Partners
- Yonghe Investments

## AVCJ ESG Forum will return in 2022