

Avigilon Control Centre – Software Guide



AVIGILON

Installing 'Avigilon Control Centre Server'

To use Avigilon Control Centre (ACC), you will first need to download and install the software for this application.

1. Go to <http://avigilon.com/support-and-downloads/for-software/software-updates-and-downloads/>
2. Select '**ACC Server 5**' install file (702 MB)
3. Your PC will now download '**AvigilonControlCenterServer-5.8.4.16.exe**'
4. Once downloaded, run the application
5. You will then be taken to an install wizard, follow the steps to complete the installation
6. After the installation completes, launch 'Avigilon Control Center Server Setup'
7. Follow the steps outlined in the program to verify your ACC Server Licence. You will be required to enter your Licence Key in this step

Installing 'Avigilon Control Centre Client'

After Installing the Avigilon Control Center Server Software, you will need to install the client software for you to setup and manage your site

1. Go to <http://avigilon.com/support-and-downloads/for-software/software-updates-and-downloads/>
2. Select '**ACC Client 5**' install file (702 MB)
3. Your PC will now download '**AvigilonControlCenterClient-5.8.4.16.exe**'
4. Once downloaded, run the application.
5. You will then be taken to an install wizard, follow the steps to complete the installation
6. After the installation completes, launch 'Avigilon Control Center 5 Client'

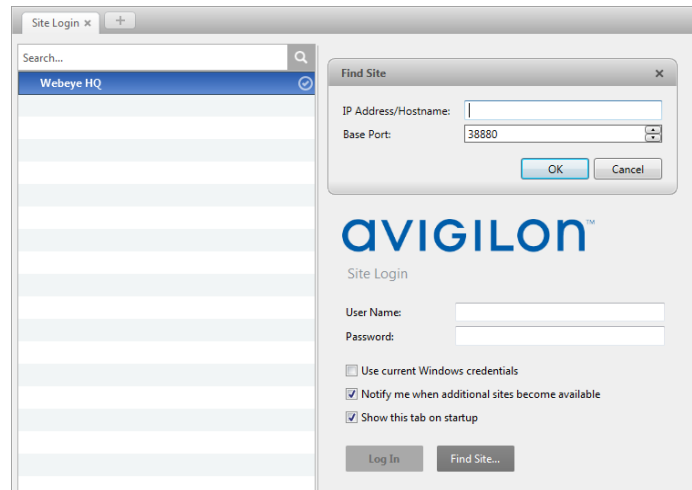
Finding the Site

When launching ACC 5 Client, you will be prompted to log in. If your site is not already displayed, you will need to find your server on the network.

1: Click 'Find Site'

2: Enter the IP address or host name of the ACC Server

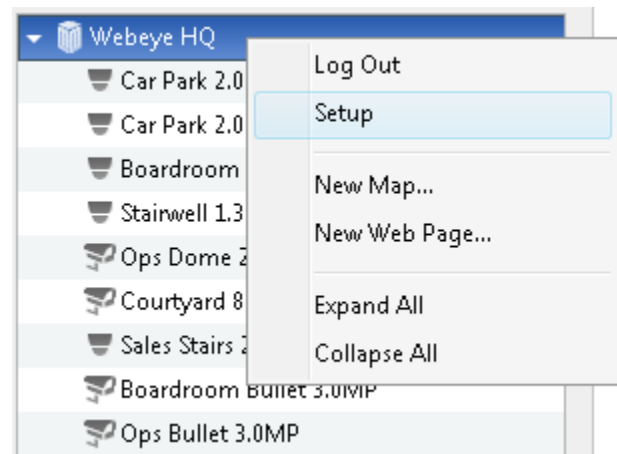
3: Press OK




Adding Cameras

1) To add a camera, right click on the server and select 'Setup'

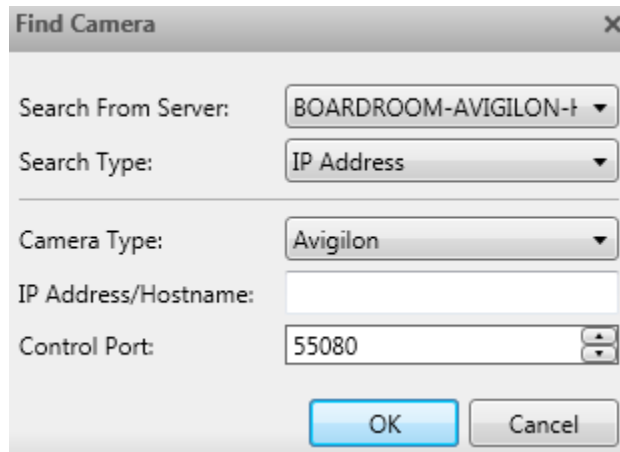
2) Select 'Connect/Disconnect Cameras' from the popup menu



3) Any automatically discovered cameras will be displayed and can be added by selecting the entry in the list and clicking 

4) If the camera you wish to add is not displayed in the list, click 



Enter the IP address details and any other relevant details of the camera in the popup menu and press 'OK'



The image shows a 'Find Camera' dialog box with the following fields and options:

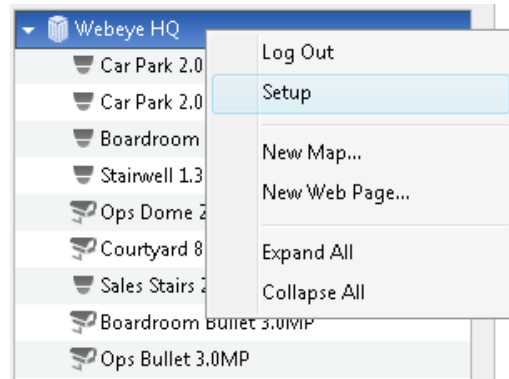
- Search From Server: BOARDROOM-AVIGILON-1
- Search Type: IP Address
- Camera Type: Avigilon
- IP Address/Hostname: (empty text box)
- Control Port: 55080
- Buttons: OK, Cancel




Configuring Analytics Events

- 1) To configure analytics events, right click on a connected camera and select 'setup'
- 2) From the popup menu, select 'Video Analytics Configuration'
- 3) Change the location settings and alter additional settings as necessary
- 4) Click the  button at the bottom of the menu to add a new analytics event
- 5) Select the activity and objects to be monitored, and adjust the detection fields as necessary
- 6) Press  to confirm all settings and save the analytics event

Configuring Alarms

- 1) To add an alarm, right click on the server and select 'Setup'
- 2) Select 'Alarms' from the popup menu



- 3) Any preconfigured alarms will be displayed. New alarms can be added by clicking 
- 4) Select the alarm trigger source. This is set to motion detection by default, but can be changed to use Analytics Events
- 5) Select any camera in the list that will be used in association with the alarm
- 6) Select any cameras that will be used to record footage during the event, adjust the pre-record time and recording duration as necessary
- 7) Add the alarm recipients, these users can be configured by going through the site setup options
- 8) Select an alarm acknowledgement action, and whether a comment is required when closing alarms
- 9) Name the alarm and assign a schedule, schedules can be edited by pressing 
- 10) Enable as necessary and press  to complete

Commissioning onto Webeye

To enable Webeyecms Monitoring, you will need to commission the device on the Webeyecms platform, setup external notifications through ACC and configure an ACC rule to send notifications through to the platform.


Commissioning the device on the Webeyecms platform:

Instructions on how to add the device to Webeye can be found at vdomain.co.uk under Support > Product Downloads > Webeyecms > Browser Guides

Configuring the notifications:

- 1) Right click on the server and select 'Setup'
- 2) Select 'External Notifications' from the popup menu, this will open a new window
- 3) Click on the 'Central Station Monitoring' tab on this window
- 4) Click the checkbox to enable monitoring
- 5) Set the options below as follows:


Recipient Email Address	acc@webeyecms.com
Sender Name	<u>The Quick Code of the ACC device on Webeye</u>
Sender Email Address	acc@webeyecms.com
SMTP server	acc.webeyecms.com
Port	25
Timeout	600
Use secure connection	no
Server requires authentication	no





The screenshot shows the 'Boardroom Avigilon Control Centre' interface. It displays device information: Serial: XX.252.XXX.56:38880, Account: 2XXXXX6, Type: Avigilon Control Centre (S...), State: Enabled, Connection Token, and Customer Ref. On the right side, there are buttons for 'Edit', 'Peripherals', 'Disable', and 'Suspend'. A red circle highlights the 'QUY8' quick code in the top right corner of the interface, with a red arrow pointing from the 'Sender Name' field in the table above to this code.

- 6) Click 'Apply' to save these settings

Configuring the rule:

- 1) Right click on the server and select 'Setup'
- 2) Select 'Rules' from the popup menu, this will open a new window
- 3) Any preconfigured rules will be displayed. Add a new rule can be added by clicking 
- 4) Select the events you want to be sent to Webeye. You must check at least the following options:

Recording started (under Device Events subcategory)
Recording ended (under Device Events subcategory)
Alarm triggered (under Alarm Events subcategory)

- 5) Click 
- 6) Ensure that 'Send notification to Central Monitoring Station' is checked
- 7) Alter any additional settings and proceed through the wizard
- 8) Click  to save the Rule and apply these settings

Testing with Webeye

Follow the below steps to ensure your server unit can connect to Webeyecms.

- 1) Open command prompt on your Avigilon server
- 2) Type 'telnet acc.webeyecms.com 25' exactly as shown
- 3) Press enter

You should get the result '220 AVC ESMTP'. This will indicate that your system can send alarms. If you do not get this result, you will need to ensure there is no network restrictions on outbound traffic using port 25.