



# AZEK Board and Batten Install Guide

<b>PRODUCT DIMENSIONS &amp; STORAGE &amp; HANDLING</b> .....	<b>2</b>
<b>TOOLS REQUIRED, CUTTING CONSIDERATION</b> .....	<b>3</b>
<b>EXPANSION &amp; CONTRACTION</b> .....	<b>4</b>
<b>FASTENING</b> .....	<b>5-6</b>
<b>PAINT REQUIREMENTS</b> .....	<b>11</b>
<b>SHEET FIRST WITH TRIM OVERLAY</b> .....	<b>12-16</b>
<b>TRIM FIRST WITH SHEET IN-FILL</b> .....	<b>16-22</b>
<b>GABLE INSTALLATION</b> .....	<b>18</b>
<b>CARE &amp; CLEANING</b> .....	<b>24</b>

AZEK Board & Batten Siding should be installed using the same good building principles used to install traditional building products and in accordance with the local building codes and the installation guidelines included below. AZEK Building Products accepts no liability or responsibility for the improper installation of this product.

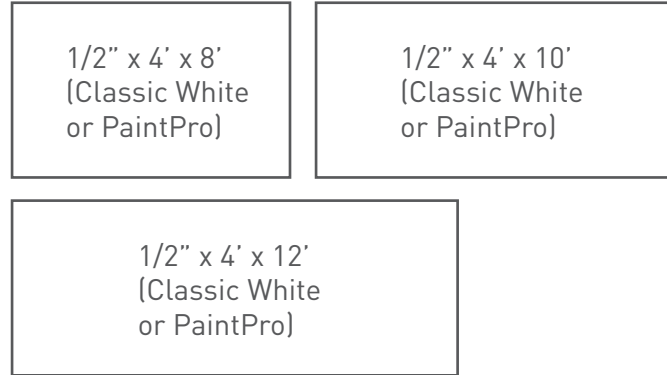
Applications outlined in this install guide are the only applications that are currently recommended for this product. Do not install this product in applications not outlined in this install guide.

AZEK Board & Batten Siding may not be suitable for every application and it is the sole responsibility of the installer to be sure that AZEK products are fit for the intended use. Since all installations are unique, it is also the installer's responsibility to determine specific requirements for each application.

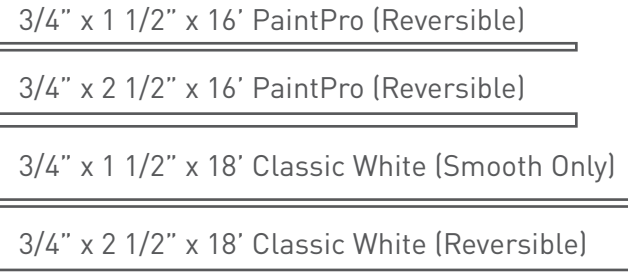
AZEK Building Products recommends that all applications be reviewed by a licensed architect, engineer or local building official before installation. If you have any questions or need further assistance, please call AZEK Customer Service at 1-877-ASK-AZEK, [877] 275-2935 or visit our website at [AZEKexteriors.com/products](http://AZEKexteriors.com/products).

### PRODUCT DIMENSIONS

#### AZEK Sheet (All Reversible)



#### AZEK Trim



#### AZEK Board and Batten with PaintPro Technology

SHEET OPTIONS	
1/2" x 4' x 8'	Reversible Texture (Woodgrain/Smooth)
1/2" x 4' x 10'	Reversible Texture (Woodgrain/Smooth)
1/2" x 4' x 12'	Reversible Texture (Woodgrain/Smooth)
BATTEN OPTIONS	
3/4" x 1 1/2" x 16'	Reversible Texture (Woodgrain/Smooth)
3/4" x 2 1/2" x 16'	Reversible Texture (Woodgrain/Smooth)

#### AZEK Board and Batten-Classic White

SHEET OPTIONS	
1/2" x 4' x 8'	Reversible Texture (Woodgrain/Smooth)
1/2" x 4' x 10'	Reversible Texture (Woodgrain/Smooth)
1/2" x 4' x 12'	Smooth
BATTEN OPTIONS	
3/4" x 1 1/2" x 18'	Reversible Texture (Woodgrain/Smooth)
3/4" x 2 1/2" x 18'	Smooth

### STORAGE & HANDLING

- Store AZEK Board & Batten Siding laying down on a flat and level surface that fully supports the product.
- Do NOT store AZEK Board & Batten Siding in areas of excess heat, such as on asphalt driveways, on top of shingle roofs or in storage trailers, in direct sunlight, or under dark tarps or coverings.
- Always leave the manufacturer's protective wrap on the product until installation. If removed, replace the protective wrap, or use a different non-translucent solid white cover, to keep the product free from dust and construction debris. DO NOT cover with a dark covering or tarp.
- If banding is used, place protective corners between the product and banding to prevent indents.
- Always remove job site dust, clay, dirt, mud, debris and other job site contaminants and products from AZEK Board & Batten Siding right away.
- **IMPORTANT:** Do not allow airborne dust from concrete, landscape blocks, or any masonry product to accumulate on AZEK Board & Batten Siding as they may damage the surface.

### TOOLS REQUIRED

AZEK Board & Batten Siding can be installed with a minimum number of readily available tools. Many other tools are available that can be used for installation. All tools should be used in accordance with the manufacturer's instructions.

Some of the basic tools required for installation:

- Safety Glasses
- Ear Protection
- Chalk Line
- Tape Measure
- Square
- Level
- Pencil or Marker
- Hammer
- Drill or Screw Gun
- Coil Siding Nailer
- Miter Saw or Circular Saw
- Jig Saw
- Caulking Gun

### CUTTING RECOMMENDATION

For best cutting results, use a miter saw or a circular saw with a fine-toothed, carbide tipped finish trim blade. To cut around obstructions, use a jigsaw with a fine-toothed blade.

When working with AZEK products, be sure to wear proper clothing and safety equipment. Safety glasses should be used during the entire installation process.

### ENVIRONMENTAL CONSIDERATIONS

AZEK Board & Batten Siding will experience expansion and contraction with changes in temperature, unlike wood and other products whose size will fluctuate with moisture changes. Fastening the boards according to the Installation Guidelines and leaving the recommended expansion gaps will help to minimize the effects of expansion and contraction.

- Expansion/contraction is most significant where extreme temperature changes may exist.
- Prior to and during installation, keep sheets as cool as possible by keeping them covered or out of direct sunlight.
- Leave a minimum 1/4" gap between the bottom of sheets and any solid surface such as a deck or patio.
- Sheets must be installed with the longest dimension running vertically.
- VERTICAL SHEET JOINTS: Leave 1/16" gaps between sheets for vertical joints.
- HORIZONTAL SHEET JOINTS: Joints MUST be flashed and a 1/4" gap left between the bottom of sheets and the top of horizontal flashing.
- EXTREME COLD: use extra care when handling and installing the product.

### EXTREME HEAT WARNING

Be aware of excessive heat on fire, grills, or reflections the surface of AZEK board and Batten Siding from external sources, such as (but not limited to) fire or reflection of sunlight from energy-efficient window products. Low-emissivity (Low-E) glass can potentially harm AZEK products. Low-E glass is designed to prevent passive heat gain within a structure and can cause unusual heat build-up on exterior surfaces from sunlight reflection. This extreme elevation of surface temperatures, which can exceed that of normal exposure, can possibly cause AZEK products to melt, sag, warp, discolor, increase expansion/contraction, and accelerate weathering.

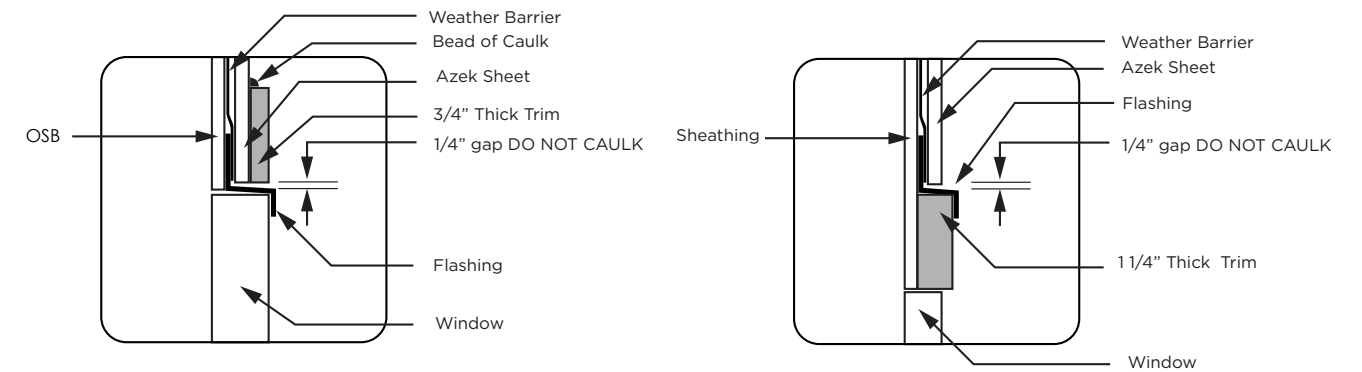
### IMPORTANT

IMPORTANT: AZEK Board & Batten will contour to the undulation of the wall surface. Ensure the wall sheathing and substructure are flat, even and in plane. Any imperfections will be seen.

### TRIM CONSIDERATIONS

There are two main options when installing AZEK Trim with AZEK Board & Batten Siding:

- Sheet First with Trim Overlay – use a 3/4" Trim installed over the top of the sheets to match up with the height of the Batten Strips (Trim may require longer fasteners to ensure 1.5" penetration into wood substrate)
- Trim First with Sheet In-Fill – use a 1-1/4" Trim installed next the Board & Batten Siding system to match up with the height of the Sheet and Batten Strips with the appropriate gapping, flashing or caulking



### FASTENING

- For high wind zone areas refer to ESR 4508, design pressures and wind charts found at <https://azekexteriors.com/resources/technical-resources>
- Fasteners should be snug or flush; do not overdrive



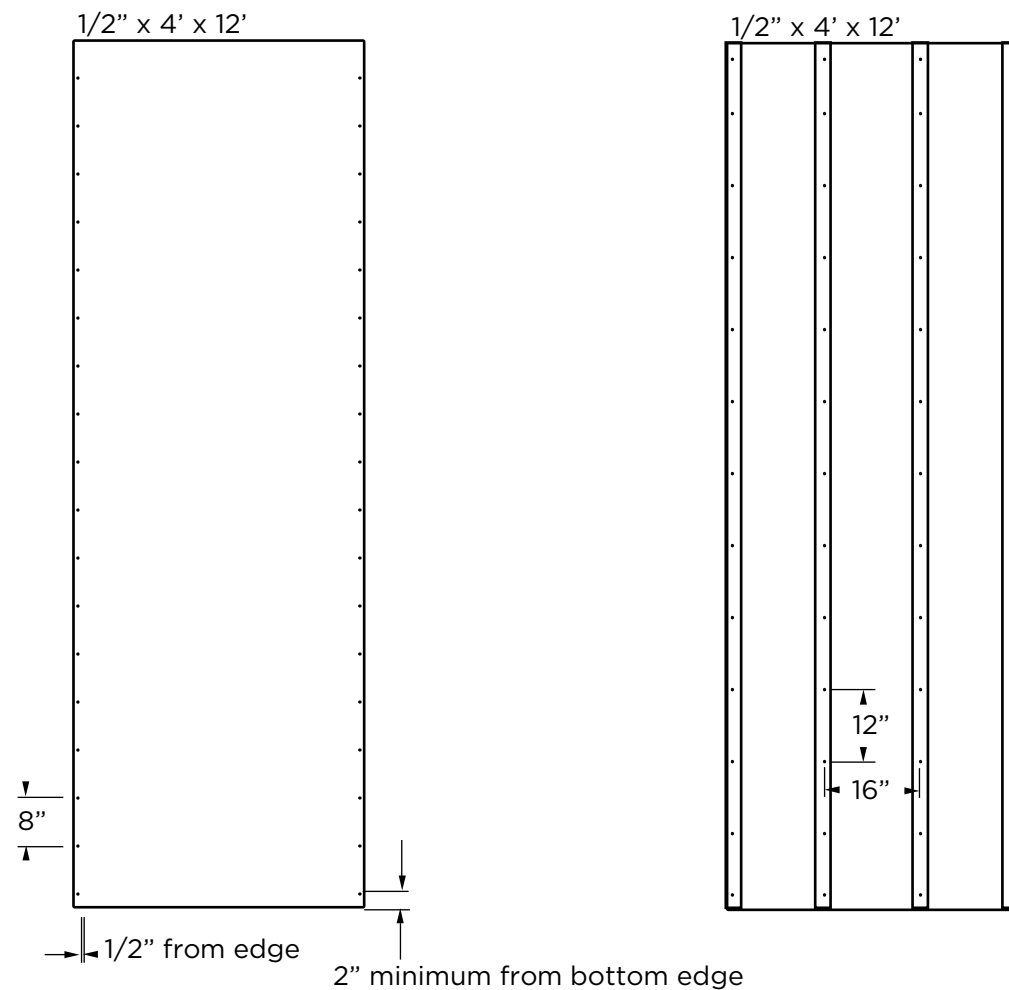
**FASTENING**

**SHEET OPTIONS:**

- FASTENER: 0.092" x 1-1/2" hot-dipped, galvanized, ring shank nails.
- VERTICAL EDGE FASTENING: fasten every 8" vertically along the left and right edge of the sheet 1/2" from the edge, 2" from top and bottom
- INTERIOR FASTENING: fasten every 12" vertically with a maximum horizontal spacing of 16". This will be accomplished with the installation of the battens.

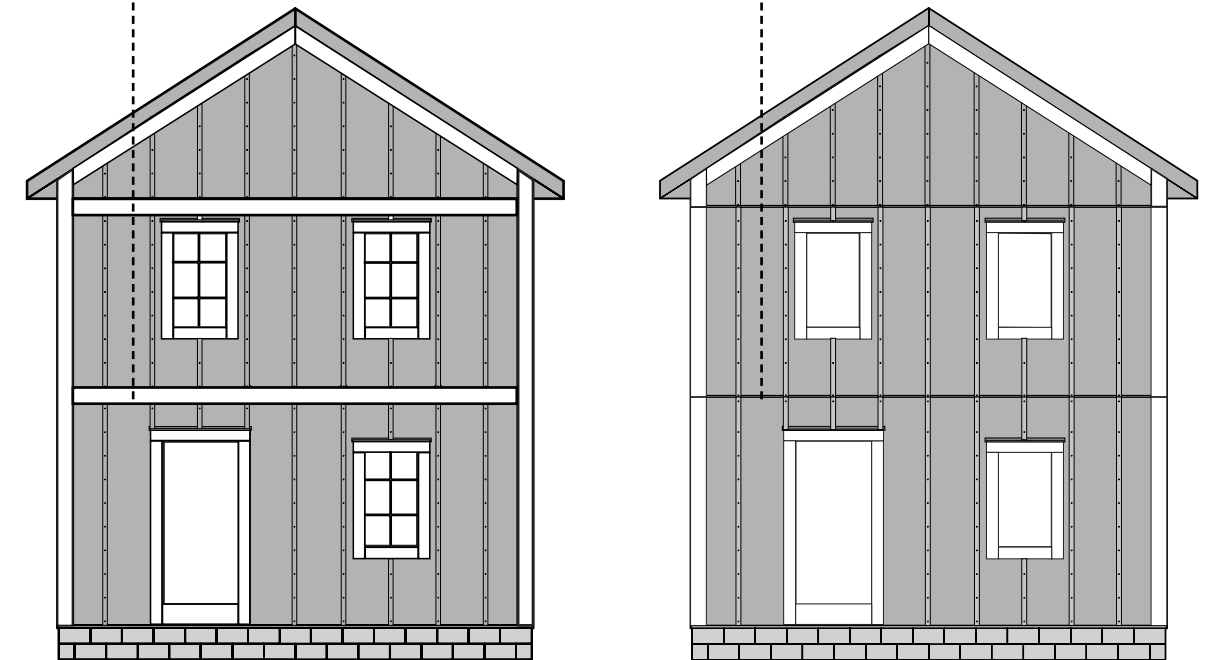
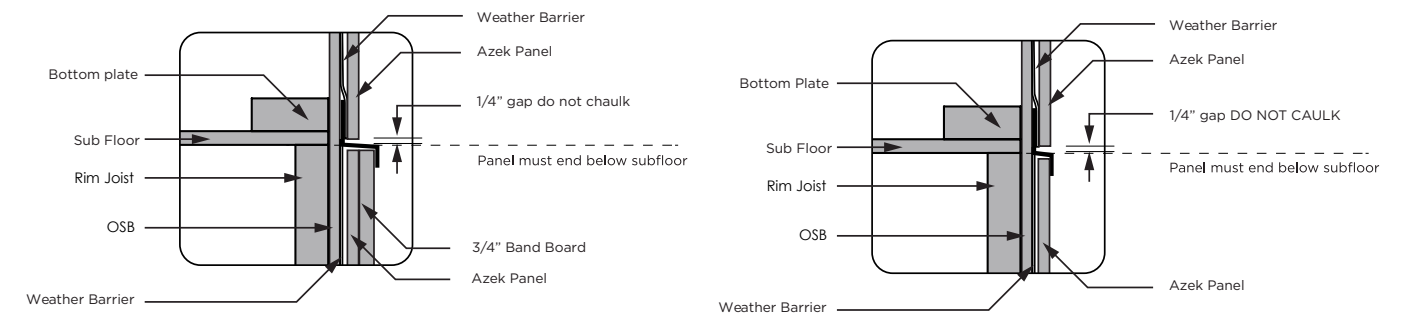
**BATTEN OPTIONS:**

- 2" Cortex screws with matching plugs
- 2" Ring Shank Coil Siding Nail
- Place fasteners every 12" vertically, 1/2" from top and bottom
- DO NOT use adhesives to fasten battens to sheets



**BRIDGING FLOORS**

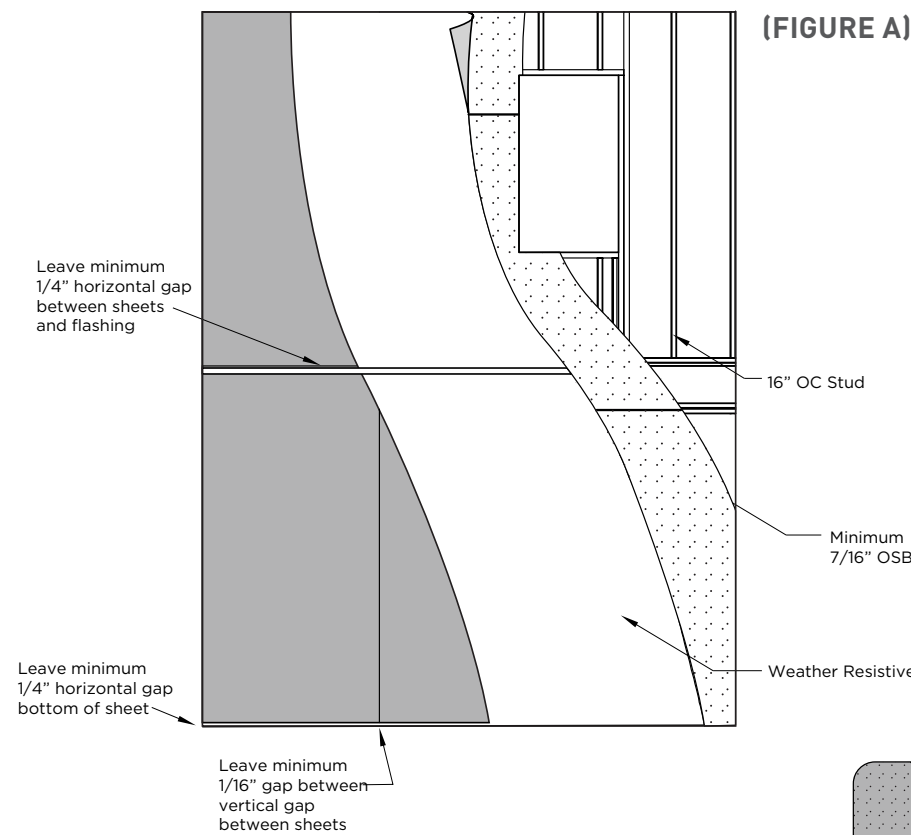
When installing on a multi-story project DO NOT bridge floors with AZEK Board & Batten Siding. Sheets and Battens must break below the sub-floor of the upper level.



**GENERAL REQUIREMENTS**

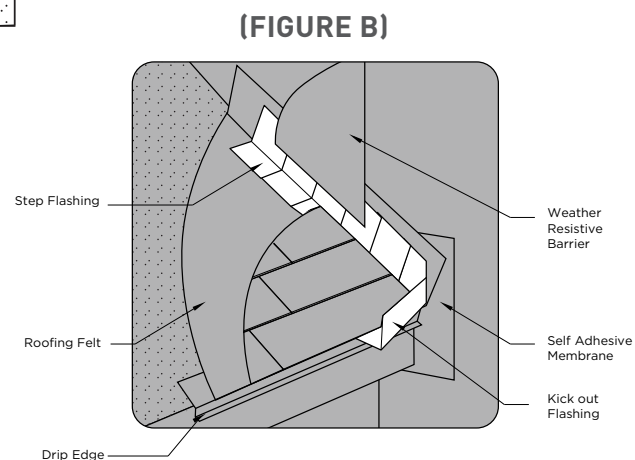
**GENERAL INSTALLATION REQUIREMENTS (FIGURE A)**

- ALWAYS install sheets with the long dimension vertically
- Minimum 7/16" OSB or 1/2" plywood sheathing required
- Install weather resistant barrier per building code (AZEK highly recommends using a **drain wrap**)
- Leave 1/16" expansion gaps for all vertical sheet seams
- Horizontal flashing required between stacked sheets
- Leave minimum 1/4" gap between sheets and any horizontal surface



**KICKOUT FLASHING (FIGURE B)**

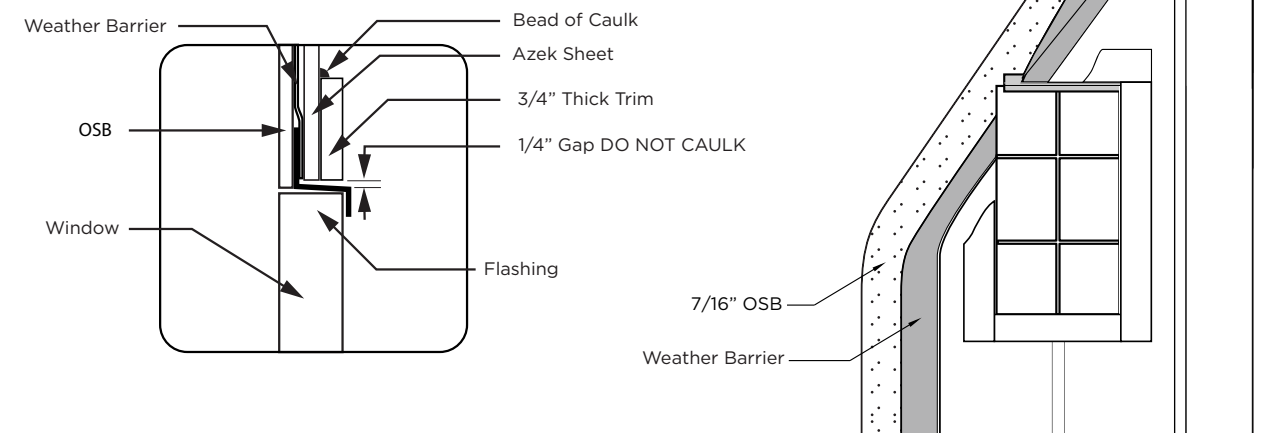
- Install kick-out flashing in accordance with the local building code
- Install all other horizontal flashings in accordance with the local building code



**WINDOW DETAILS**

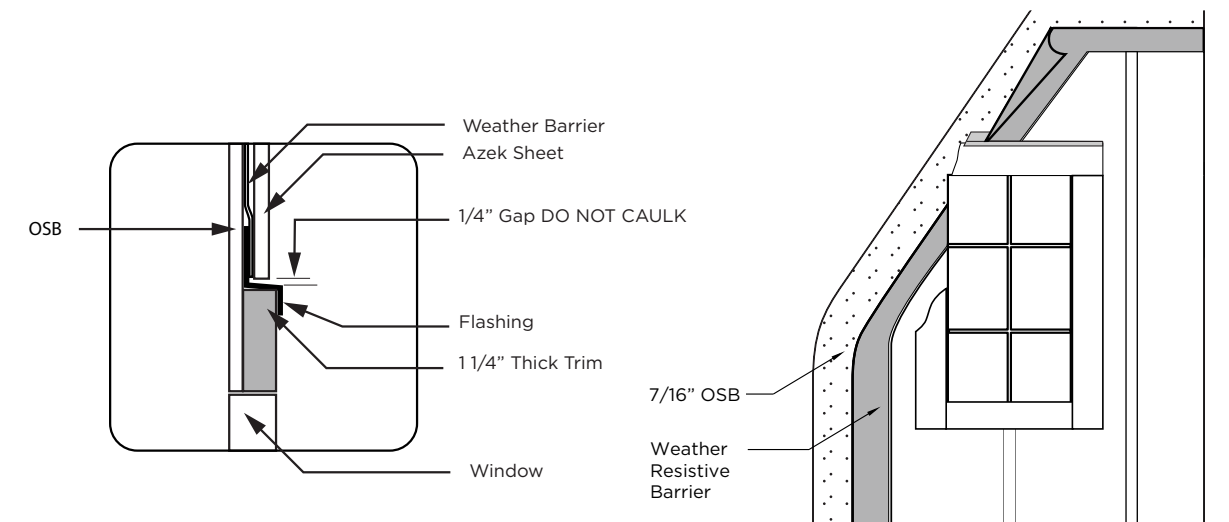
**SHEET FIRST WITH TRIM OVERLAY**

- Properly flash the top of the window
- Leave 1/4" gap above the flashing, DO NOT CAULK
- Leave a 1/8" gap between the sheet and the sides and bottom of the window, caulk this gap
- Install the Trim on top of the sheet around the window
- Caulk the top edge of the Trim above the window



**TRIM FIRST WITH SHEET IN-FILL**

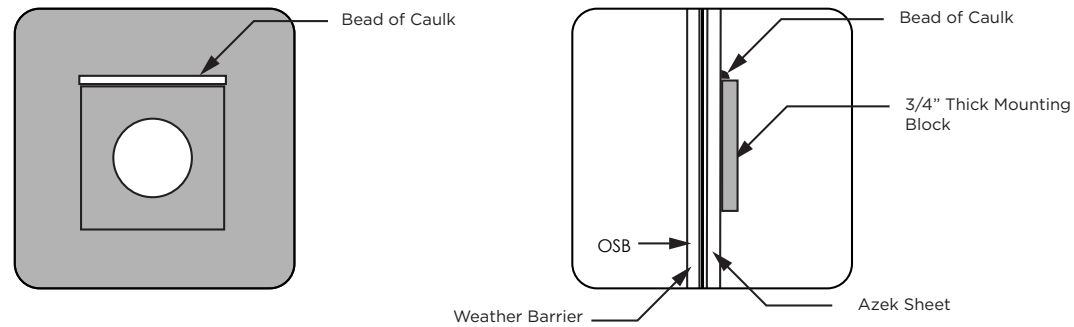
- Install Trims around the window
- Properly flash the top of the Trim
- Install sheets around the window Trim leaving a 1/8" gap around the sides and bottom of the window. Caulk the 1/8" gap. Leave a 1/4" gap between the bottom of the sheet and the top of the flashing. DO NOT caulk the 1/4" gap.



**BLOCKING DETAILS**

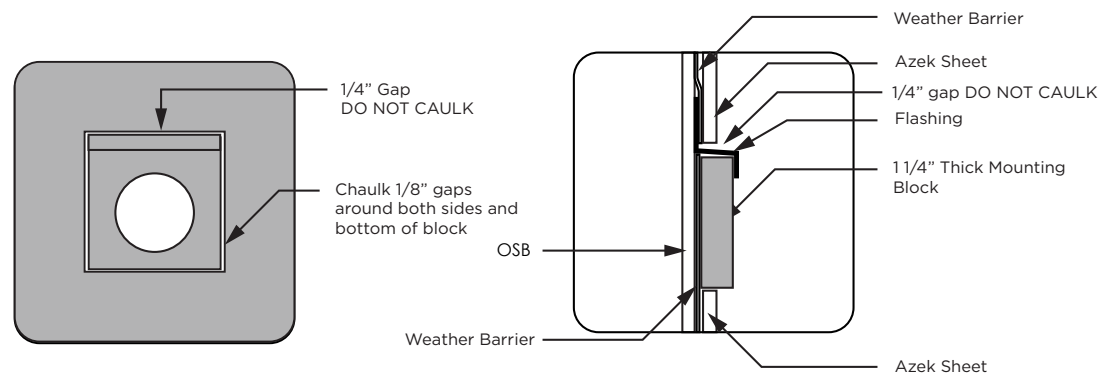
**SHEET FIRST WITH TRIM OVERLAY**

- Cut the Sheet with a jigsaw to fit over the protrusion and fasten as required
- Fill any gaps between the protrusion and the sheet with caulk or insulating foam
- Overlay the block and fasten with 2" Cortex screw and plug, a 2" coil siding nail or another approved fastener in the AZEK Trim Installation Guide. Run a bead of caulk along the top edge of the block
- Learn more: <https://azekexteriors.com/resources/installation-help>



**TRIM FIRST WITH SHEET IN-FILL**

- Prior to installing Sheet, cut the block and install it in place
- Flashing the top of the block
- Install Sheet around the block leaving 1/8" gaps on the sides and bottom, and a 1/4" gap above the flashing
- Caulk the sides and bottom, DO NOT caulk the top



**PAINTING REQUIREMENTS**

If your desired color does not meet a Light Reflective Value (LRV) of 55 or higher you must either choose a pre-set color from a paint designed for vinyl or have the color matched using a specialty paint with solar reflective pigments. Paints formulated for vinyl and paints with solar reflective pigments are designed to limit heat build and ensure the long term performance of your PaintPro® products. Always make sure your paint is suitable for exterior application.

- **AZEK Board and Batten Siding must be painted within 180 days of installation**
- To maximize paint performance, the product should be kept covered and away from sunlight before installation at a job site
- The surface must be clean, dry, and void of any foreign material such as dirt, oil, grease or other contaminants that may come from normal handling, storage and/or installation prior to painting. Refer to the storage and handling guidelines on page 2 for more details
- Paints used on AZEK Board and Batten Siding will dry to the touch quickly. As with any product, ensure the panels are properly cured before handling and stacking
- **DISCLAIMER:** The Lifetime Limited Warranty on AZEK Board and Batten Siding does not cover the performance of painted finishes or coating applied to the product by the original purchaser or any third party

COLOR RANGE	KEY COLOR SELECTION CRITERIA	PAINT TYPE
Lighter paint colors only	Must have a light reflective value (LRV) above 55	Exterior 100% Acrylic Latex
Light, medium and some darker colors	Only use colors that are from a paint manufacturers' approved color list for vinyl siding. No custom colors.	Exterior 100% Acrylic Latex made for Vinyl Siding
All colors including dark and custom colors	Not available at most retail locations. Available online at: <a href="http://www.aqua-diy.com/azek/">www.aqua-diy.com/azek/</a>	Water-Based Solar Reflective Coatings

\*\*Using 100% Exterior Grade Acrylic Latex paint colors with LRV less than 55 may lead to excessive expansion and contraction of your trim and will void your warranty.

**What is Light Reflective Value (LRV)?**

LRV is a measure of the total amount of light reflected by a painted surface. LRV for a paint can typically be found on a manufacturer's website or often can be found on in-store color cards. When using a 100% acrylic latex exterior paint, ensure the color has an LRV of 55 or above.

**Additional Paint Warranty Information:**

For premium finish with an extra 15-year limited paint and labor warranty, use AquaSurTech D100 paint or TruStain products. Order online: [www.aqua-diy.com/azek](http://www.aqua-diy.com/azek)

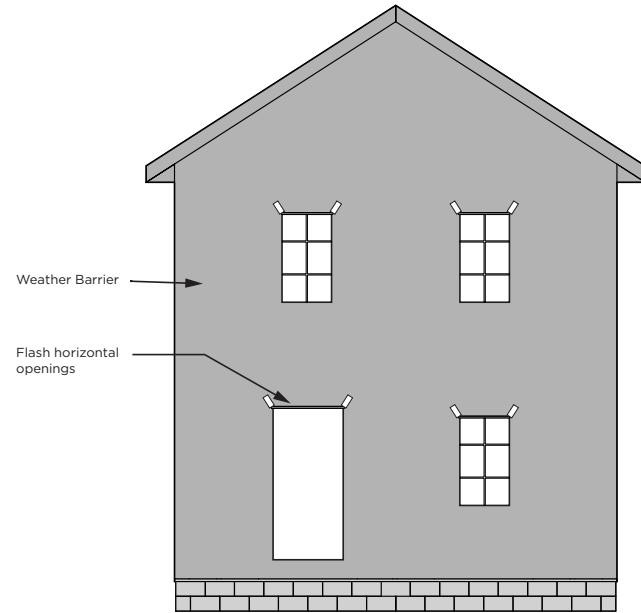
**If you still have questions about what paints should be used on AZEK Trim and Siding products check out our recommended color lists and learn more at: [www.azekexteriors.com/painting](http://www.azekexteriors.com/painting)**

**SHEET FIRST**

**INSTALLATION PREPARATION:**

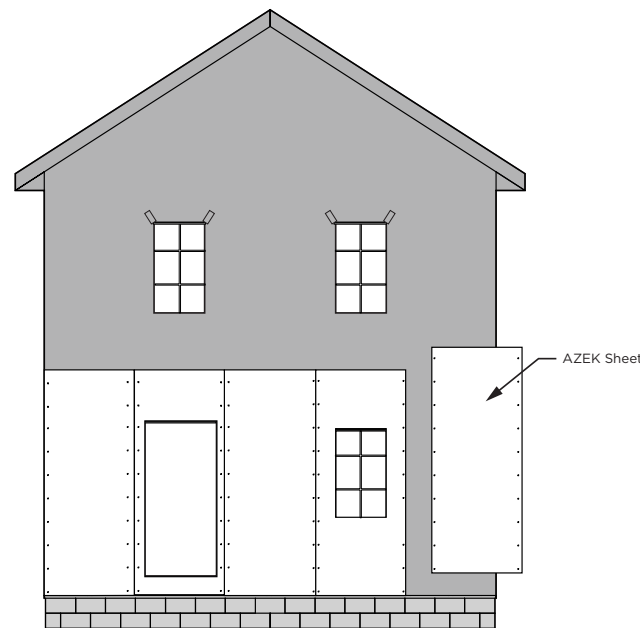
Follow these guidelines for best AZEK Board & Batten Siding installation results:

- **IMPORTANT:** AZEK Board & Batten will contour to the undulation of the wall surface. Ensure the wall sheathing and substructure are flat, even and in plane. Any imperfections will be seen
- Prior to installation, be sure that the wall is structurally sound, weather-tight, and that there are no nails or screws protruding
- Identify any utilities behind AZEK Board & Batten Siding and sheathing. Take proper measures to ensure utilities are not damaged by fasteners.
- Flash all windows and doors.
- Install proper horizontal flashings and kick-out flashings in accordance with the IRC.



**STEP 1**

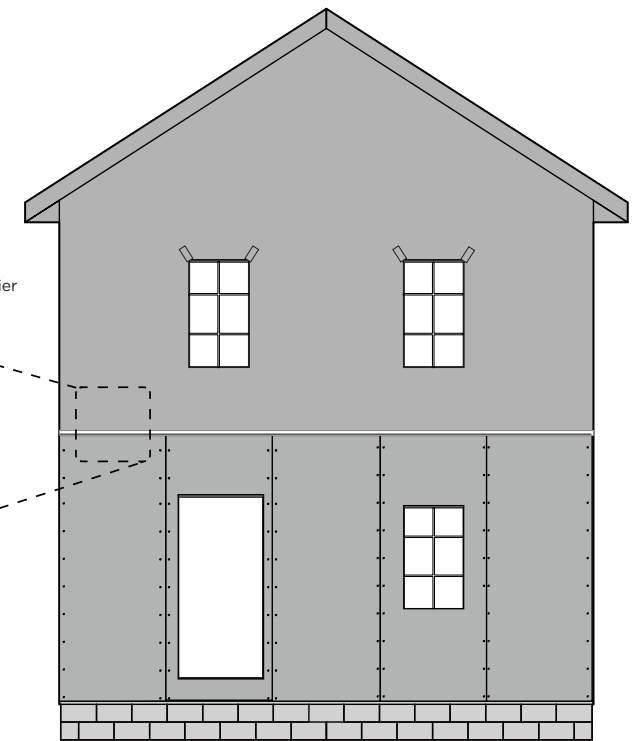
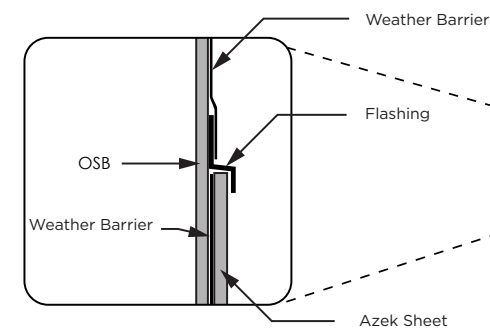
- Layout sheets so they DO NOT bridge floors (see page 8 for more detail)
- Install sheets with fasteners on the vertical edges every 8"
- Fasteners must be 1/2" from the vertical edges and 2" from the top and bottom
- Leave 1/16" gaps between the vertical seams of two adjoining sheets
- Leave 1/8" gaps along the sides and bottom of windows and doors and caulk
- Tip: Fastening in the field will be accomplished when installing battens



**SHEET FIRST**

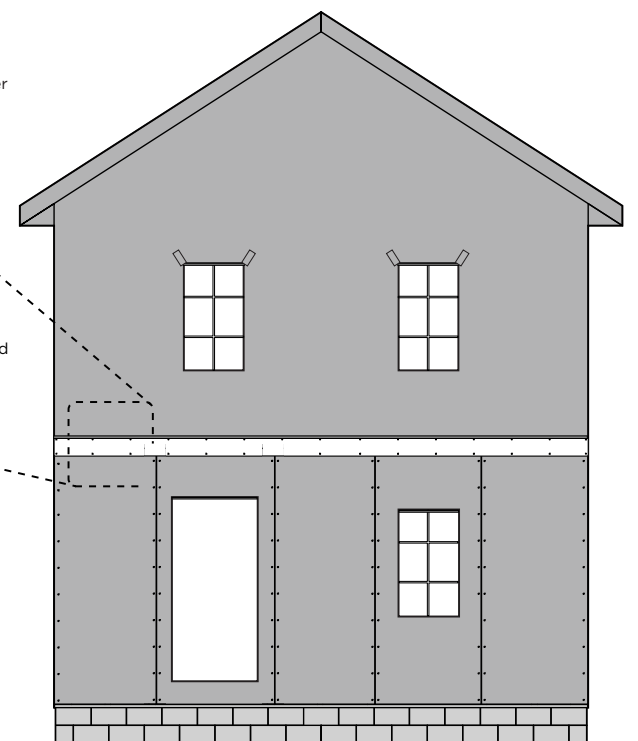
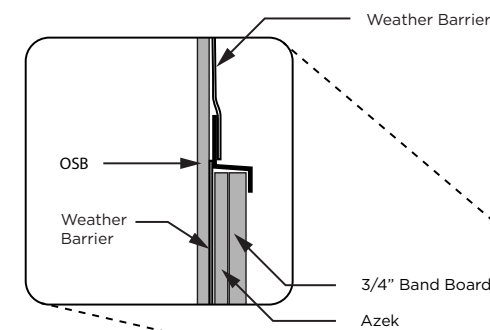
**STEP 2 (NO BAND BOARD)**

- Flash along the top of the sheets in compliance with the IRC



**STEP 2 (BAND BOARD)**

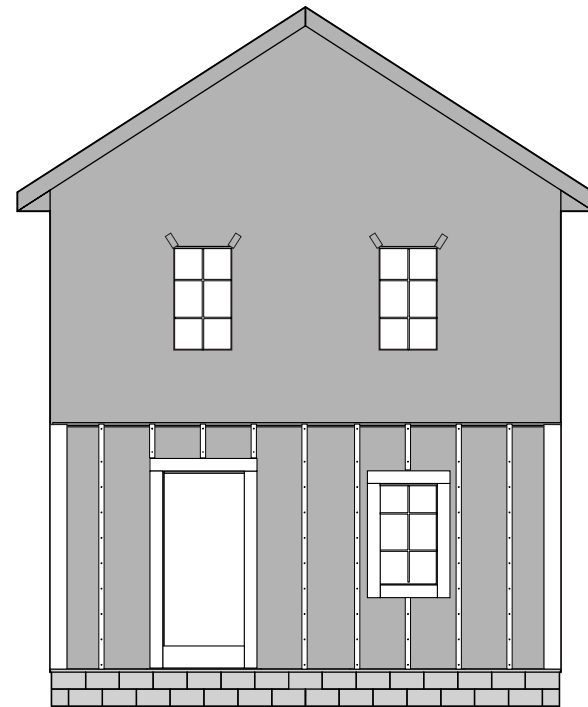
- Install band board flush with the tops of the sheets
- Flash along the top of the sheets and band board in compliance with the IRC



**SHEET FIRST**

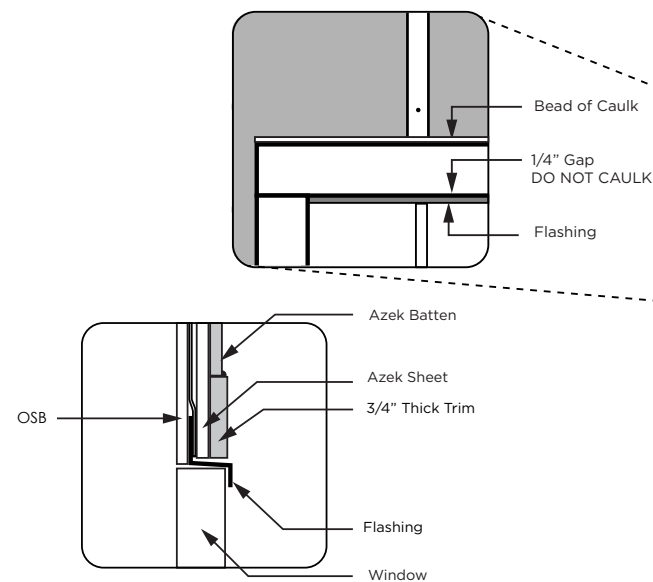
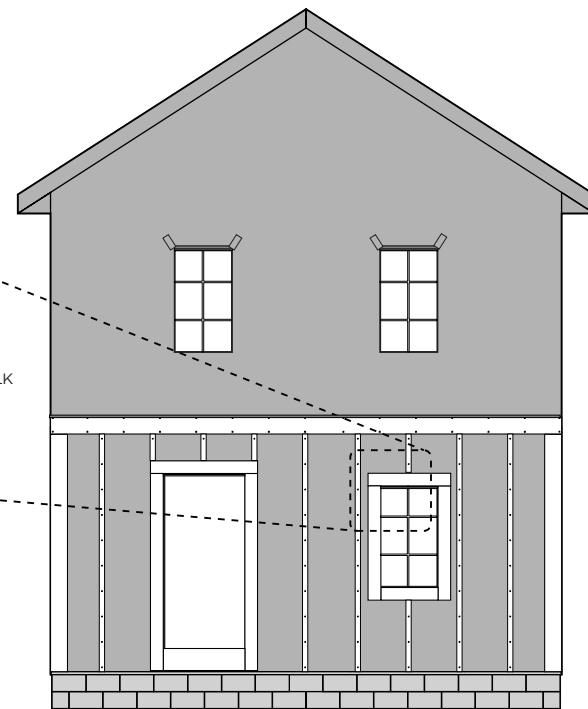
**STEP 3 (NO BAND BOARD)**

- Overlay the corners and trims on top of the sheets
- Install Battens with 2" AZEK Cortex screws and plugs or 2" ring shank nails every 12" with a fastener 1/2" from each end
- Run a bead of caulk along the tops of the trims above the windows, doors or skirt boards



**STEP 3 (BAND BOARD)**

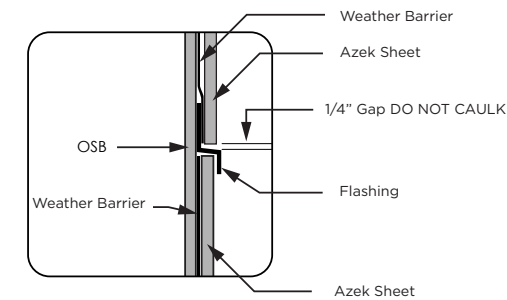
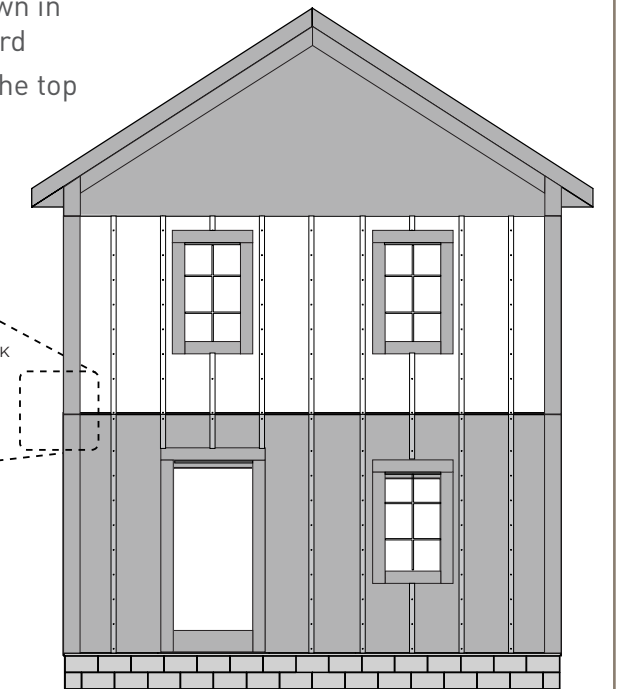
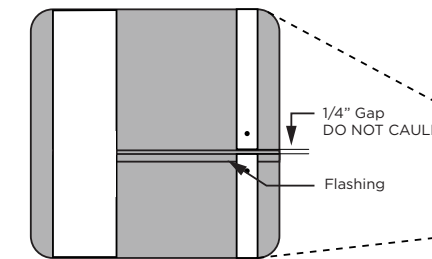
- Overlay the corners and trims on top of the sheets
- Install Battens with 2" AZEK Cortex screws and plugs or 2" rings shank nails every 12" with a fastener 1/2" from each end
- Run a bead of caulk along the tops of the trims above the windows, doors or skirt boards



**SHEET FIRST**

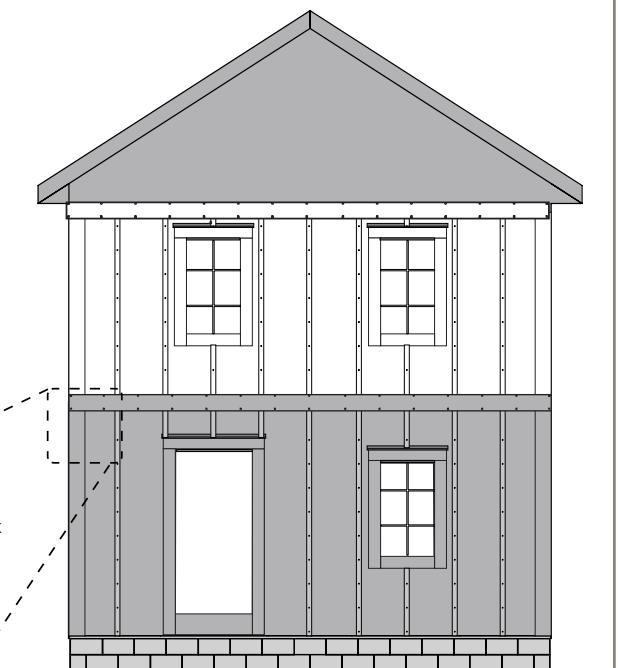
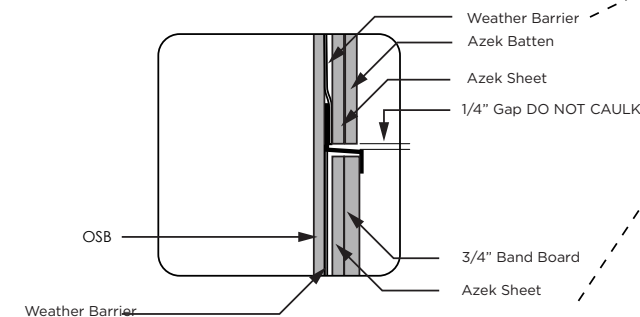
**STEP 4 (NO BAND BOARD)**

- Install the next level of sheets, trim and battens as shown in previous steps with a break below the bottom truss chord
- Leave a 1/4" gap between the bottom of the sheet and the top of the flashing above the first level. DO NOT CAULK
- Optional: Cut the batten ends at a 22.5 degree angle, still leaving a 1/4" gap



**STEP 4 (BAND BOARD)**

- Install the next level of sheets, band board, trims and battens as shown in previous steps
- Leave a 1/4" gap between the bottom of the sheet and battens and the flashing along the band board. DO NOT CAULK

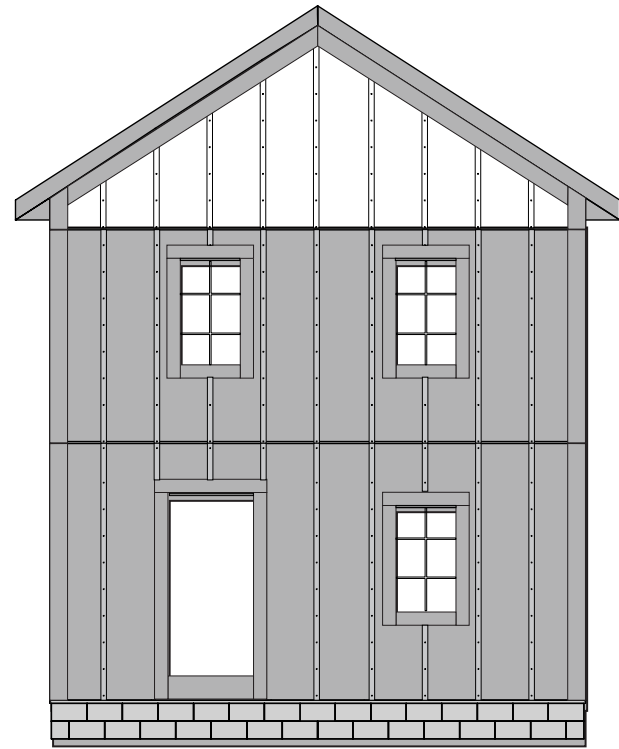




**SHEET FIRST**

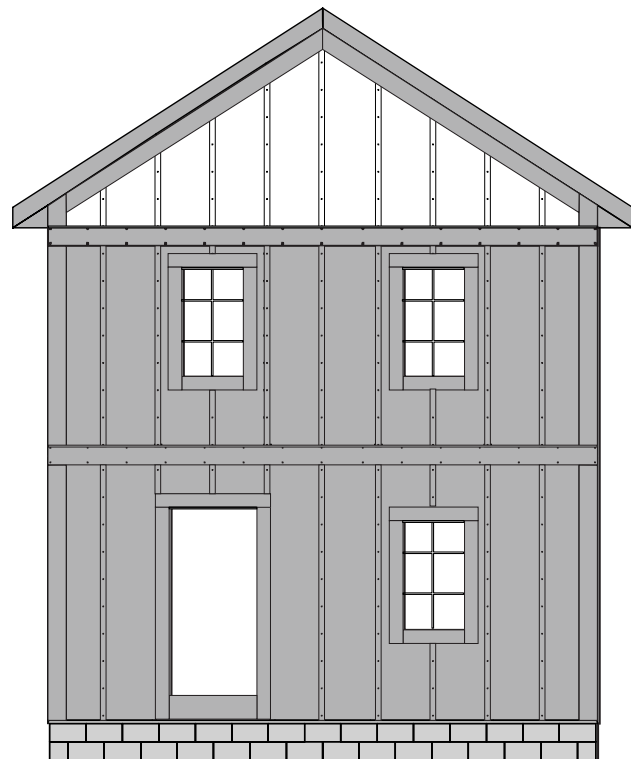
**STEP 5 (NO BAND BOARD)**

- Install the gable sheets, leaving a 1/8" gap between the sheets and soffit
- Leave a 1/4" gap between the bottom of the sheet and the top of the flashing above the second level. **DO NOT CAULK**
- Install trims and battens as shown in previous steps



**STEP 5 (BAND BOARD)**

- Install the gable sheets, leaving a 1/8" gap between the sheets and soffit
- Leave a 1/4" gap between the bottom of the sheet and the top of the flashing above the second level. **DO NOT CAULK**
- Install trims and battens as shown in previous steps



**TRIM FIRST**

**INSTALLATION PREPARATION**

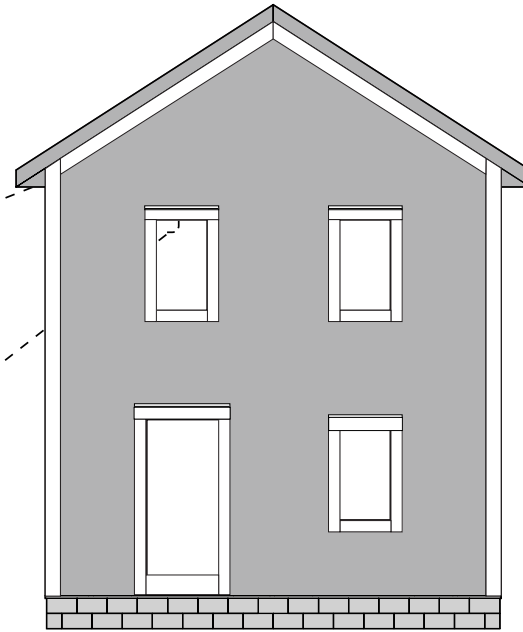
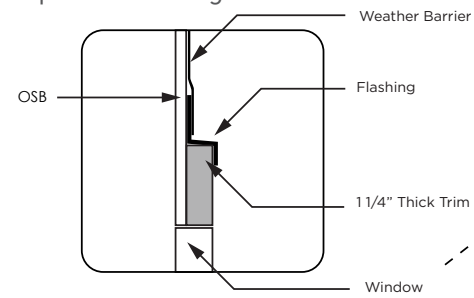
Follow these guidelines for best AZEK Board & Batten Siding installation results:

- **IMPORTANT:** AZEK Board & Batten will contour to the undulation of the wall surface. Ensure the wall sheathing and substructure are flat, even and in plane. Any imperfections will be seen
- Prior to installation, be sure that the wall is structurally sound, weather-tight, and that there are no nails or screws protruding.
- Please refer to ESR 4508 and the associated wind charts and design pressures for high wind zone fastening schedules
- Identify any utilities behind AZEK Board & Batten Siding and sheathing. Take proper measures to ensure utilities are not damaged by fasteners
- For best results, use a weather resistant barrier with an incorporated drainage mat

**TRIM FIRST**

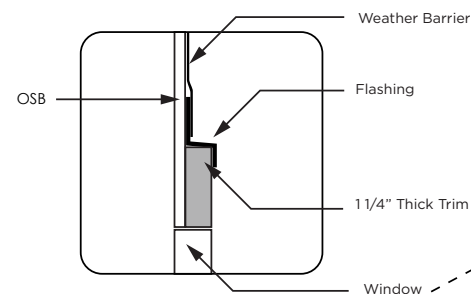
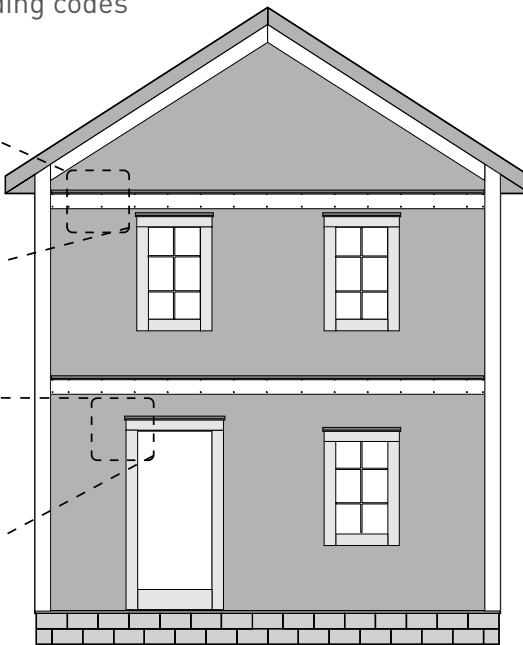
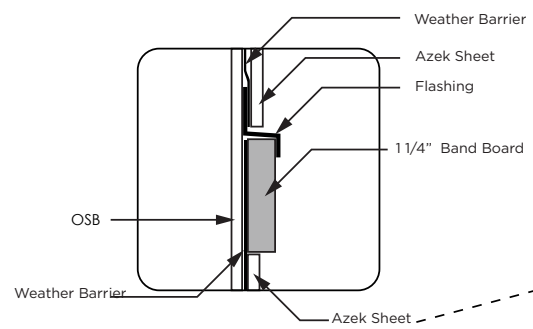
**STEP 1 (NO BAND BOARDS)**

- Refer to trim installation guide [URLS](#)
- Install all trims and corners
- Flash all horizontal surfaces to meet local required building codes
- Install all kick-out flashing to meet local required building codes



**STEP 1 (BAND BOARDS)**

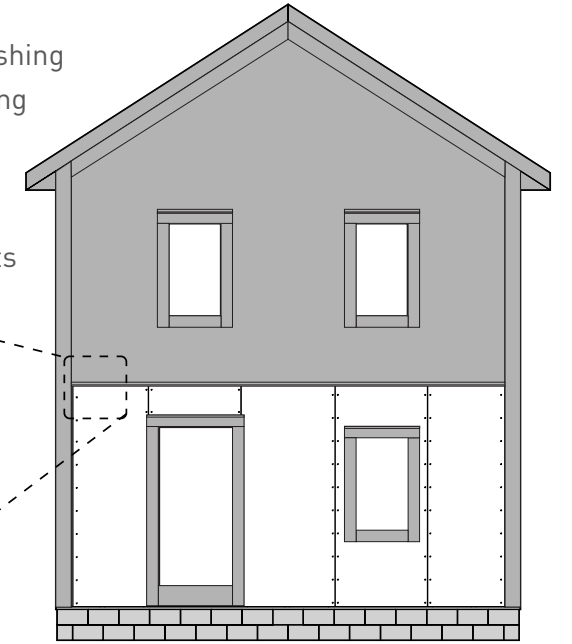
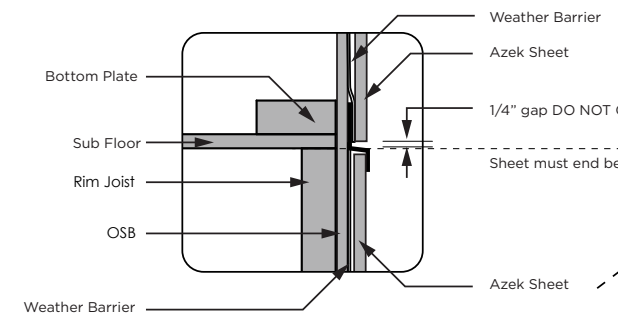
- Refer to trim installation guide [URLS](#)
- Install all trims and corners
- Install band board with the top of the band board on plane with the second level subfloor or the bottom of the rafters (see page 6 for more details)
- Flash the horizontal surfaces to meet all required local building codes
- Install kick-off flashing to meet all required local building codes



**TRIM FIRST**

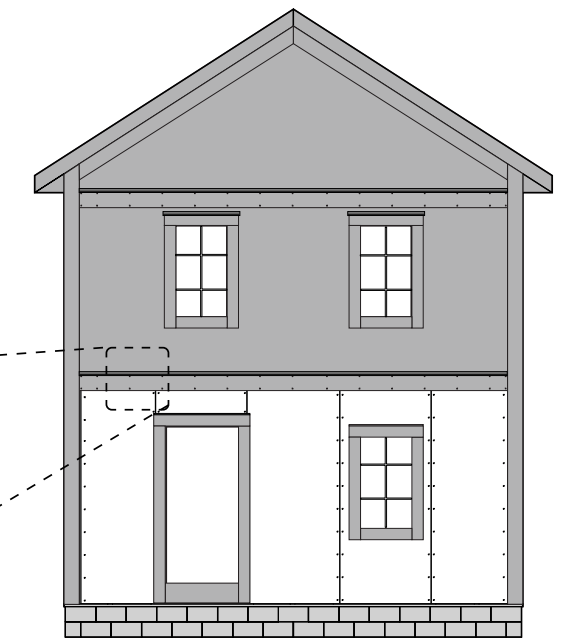
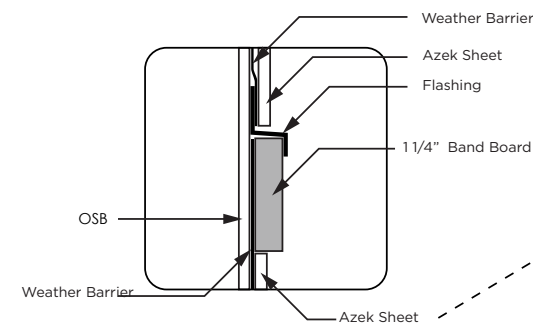
**STEP 2 (NO BAND BOARDS)**

- Install sheets with the tops ending at the second level subfloor. Do not span levels/floors with sheets
- Leave 1/8" gaps between sheets and trims
- Leave a 1/4" gap between sheets and horizontal flashing
- Leave 1/16" gaps between vertical seams of adjoining sheets
- Fasten along the vertical edges 1/2" from the edge every 8", and 2" from the top and bottom
- Install horizontal flashing along the top of the sheets



**STEP 2 (BAND BOARDS)**

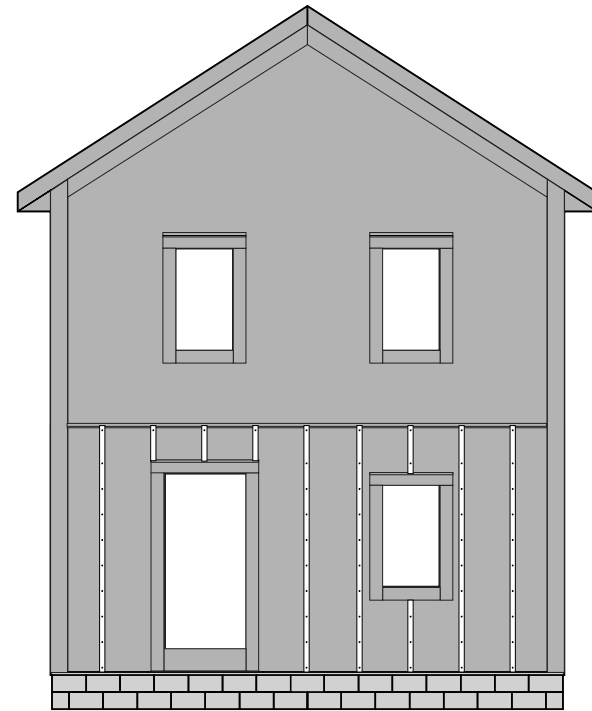
- Install sheets
- Leave 1/8" gaps between sheets and trims
- Leave a 1/4" gap between sheets and horizontal flashing
- Leave 1/16" gaps between vertical seams of adjoining sheets
- Fasten along the vertical edges 1/2" from the edge every 8", and 2" from the top and bottom



**TRIM FIRST**

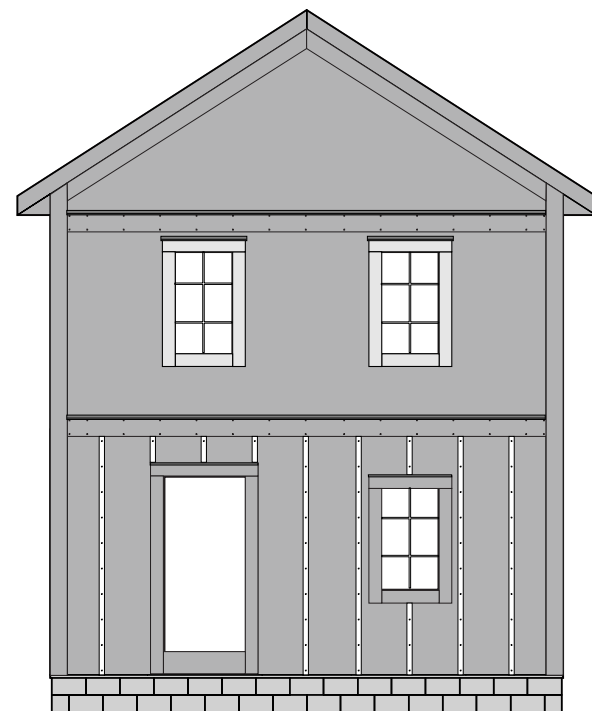
**STEP 3 (NO BAND BOARDS)**

- Install battens over the seams using 2" AZEK Cortex screws and plugs or 2" rings shank nails every 12" with the top and bottom fasteners 1/2" from each end
- Fill in the remaining battens with a maximum spacing of 16" on-center
- DO NOT bridge floors with battens



**STEP 3 (BAND BOARDS)**

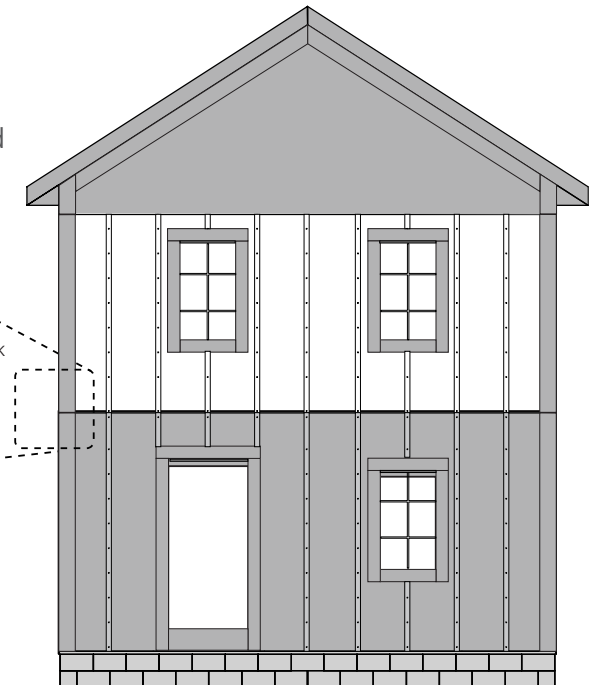
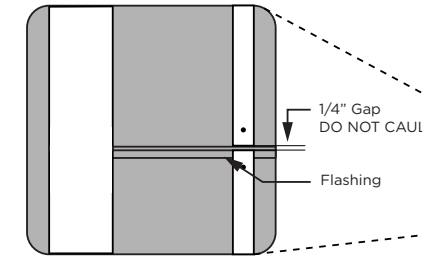
- Install battens over the seams using 2" AZEK Cortex screws and plugs or 2" rings shank nails every 12" with the top and bottom fasteners 1/2" from each end
- Fill in the remaining battens with a maximum spacing of 16" on-center



**TRIM FIRST**

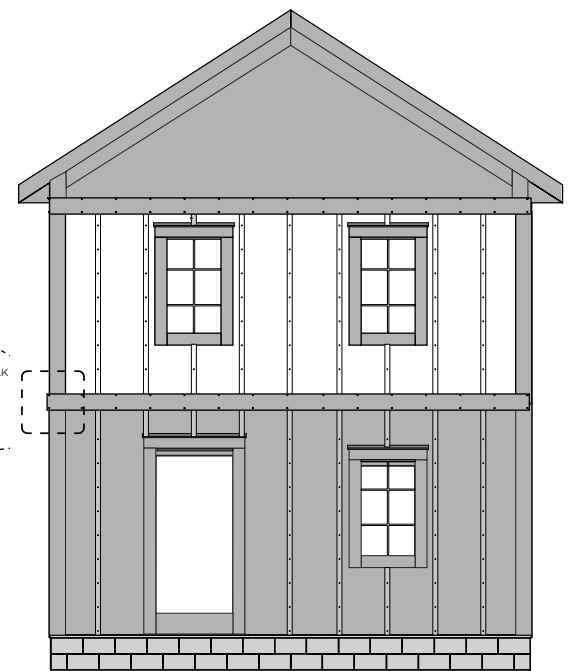
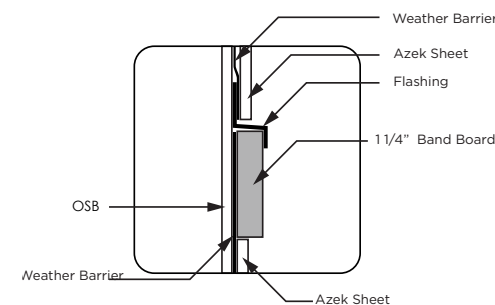
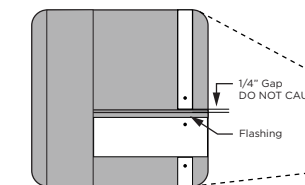
**STEP 4 (NO BAND BOARDS)**

- Install the next level of sheets and battens as shown in previous steps with a break at the bottom of the rafters/trusses
- Leave a 1/4" gap between the bottom of the sheet and the top of the flashing above the first level. DO NOT CAULK
- Optional: Cut the batten ends at a 22.5 degree angle, still leaving a 1/4" gap



**STEP 4 (BAND BOARDS)**

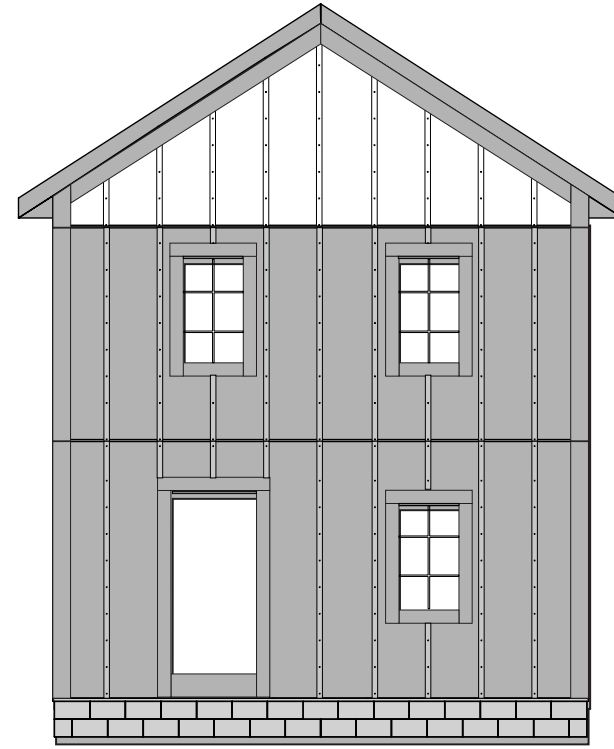
- Install the next level of sheets and battens
- Leave a 1/4" gap between the bottom of the sheet and battens and the flashing along the band board. DO NOT CAULK



**TRIM FIRST**

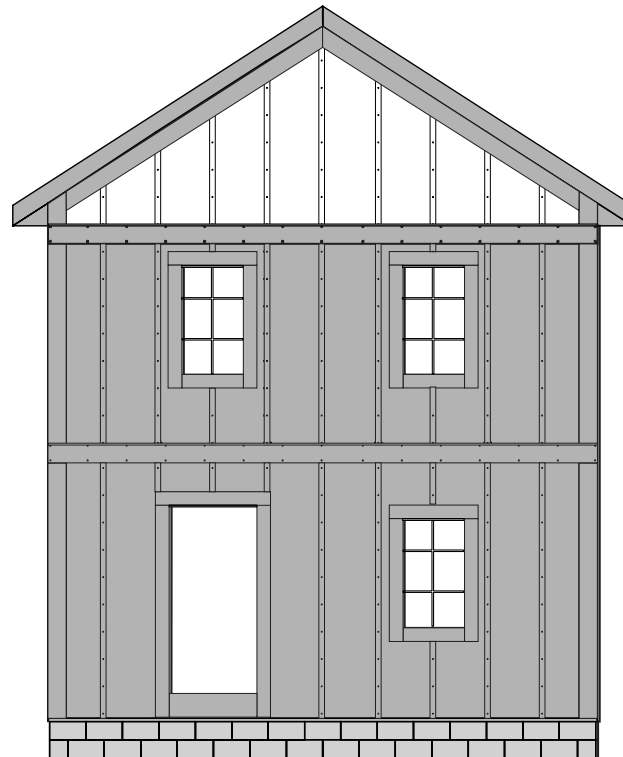
**STEP 5 (NO BAND BOARD)**

- Install the gable sheets, leaving a 1/8" gap between the sheets and trims
- Leave a 1/4" gap between the bottom of the sheet and the top of the flashing above the second level. DO NOT CAULK
- Install battens as shown in previous steps



**STEP 5 (BAND BOARD)**

- Install the gable sheets, leaving a 1/8" gap between the sheets and trims
- Leave a 1/4" gap between the bottom of the sheet and the top of the flashing above the second level. DO NOT CAULK
- Install battens as shown in previous steps



NOTES

---

---

---

---

---

---

---

---

---

---

---

---

---

---

---

---

---

---

---

---

---

---

---

---

## CARE AND CLEANING

- Use a hose or power washer with a fan tip to clean off any loose dirt or debris. Make sure to test the pressure of the power washer prior to using it on AZEK Board & Batten Siding products to ensure it will not damage the surface.
- For UNPAINTED sheets and battens, if they do not come clean with water, they can be cleaned with TimberTech Deck Cleaner and a medium nylon bristle brush. Rinse the material thoroughly and let dry prior to applying paint.
- **IMPORTANT: DO NOT USE SOLVENT BASED CLEANERS AS THEY CAN DAMAGE THE FINISH OF AZEK BOARD & BATTEN SIDING PRODUCTS.**
- **WARNING: KEEP CHILDREN AND PETS AWAY FROM CLEANING PRODUCTS AND THE CLEANED MATERIAL UNTIL IT IS COMPLETELY DRY.**
- For any other questions on AZEK Board & Batten Siding, visit [AZEKexteriors.com/contact](http://AZEKexteriors.com/contact) or call us at 877-ASK-AZEK or 877-275-2935.

**AZEK Building Products**  
1330 West Fulton St. Suite #350  
Chicago, Illinois 60607

**AZEKexteriors.com • (877) ASK-AZEK (877) 275-2935**