



RURAL ELECTRIC

NEBRASKAN

March 2020



BILL HEDGES
AND HIS

**COSMIC
CAT**



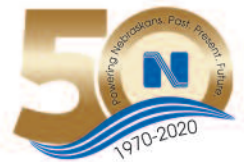
RESCO to the Rescue

Energy Efficient
Landscaping

Powering your everyday, every day.

In the 1930s, for-profit electric utilities didn't see value in serving farmers and ranchers. So, us Nebraskans rolled up our sleeves and built our electric systems. Today, we all get the same reliable electric service at the lowest possible cost, no matter the zip code.

nppd.com
(877) ASK-NPPD



Nebraska Public Power District

Always there when you need us.

Together with your local public power district.

RURAL ELECTRIC
NEBRASKAN

"The Rural Voice of Nebraska"

Staff

Editor

Wayne Price

Editorial Assistant

Tina Schweitzer

Published by the



Interim General Manager

Dave Jarecke

President

Bryan Monahan,

Panhandle Rural Electric

Membership Association

Vice President/Secretary

A.C. (Pat) Hecox,

Dawson Public Power District

Treasurer

Greg Strehle,

Cuming County Public Power District

Published monthly by the Nebraska Rural Electric Association, 1244 K Street, Box 82048, Lincoln, Nebraska 68501, (402) 475-4988.

Advertising in the *Rural Electric Nebraskan* does not imply endorsement for products by the Nebraska Rural Electric Association. Correspondence should be sent to Wayne Price, Editor, *Rural Electric Nebraskan*, Box 82048, Lincoln, NE 68501.

The *Rural Electric Nebraskan* is printed by the Aradius Group, 4700 F Street, Omaha, NE 68117. Form 3579 should be sent to the Rural Electric Nebraskan, Box 82048, Lincoln, NE 68501.

Periodicals postage paid at Lincoln, Neb. POSTMASTER: send address changes to the Rural Electric Nebraskan, 1244 K Street, Box 82048, Lincoln, NE 68501.

Publication numbers are USPS 071-630 and ISSN 0193-4937.

Subscriber Services: Cost of subscription for consumers of participating member-systems is \$2.14 per year (17.8 cents per month), plus periodicals postage paid from equity accruing to the consumer. For nonmembers, a subscription is \$10 per year or \$20 for three years, plus local and state tax. Single copy, \$2.50.

Volume 74, Number 3, March 2020

Contents

Features

Bill Hedges and his Cosmic Cat

6

Freelance writer Tim Trudell shares how Bill Hedges of Lyons, Neb. rekindled his love of movies after retiring from the U.S. Postal Service. He has renovated the old theater into a movie studio where he creates videos for YouTube.



RESCO to the Rescue

14

RESCO or the Rural Electric Supply Cooperative is a not-for-profit provider of materials and equipment for rural electric co-ops and, in Nebraska, public power districts and municipal utilities.



Departments

EDITOR'S PAGE

4

SAFETY BRIEFS — Murphy

12

CUT YOUR UTILITY BILLS by Pat Keegan

16

CALENDAR OF EVENTS

18

RECIPES

20

MARKETPLACE/CLASSIFIEDS

22

On the cover

Bill Hedges and his cat Penny at Cosmic Films Studios. See the related article on Page 6. Photography by Tim Trudell





by Wayne Price

Does your home have enough insulation?

Does your home feel drafty? Can you see the curtains move when the wind is blowing outside? It might be time to consider sealing up these leaks and adding insulation to your home.

To find leaks, walk around your house on a cold day and feel for drafts around exterior doors and windows, electric outlets, and entrance points for cables and pipes. Be sure to also check dryer vents, gas lines, or any place with an opening in the wall.

Check around recessed lights in the ceiling. If fixtures are installed in the second-story ceiling or the first floor ceiling of a one-story house, a hole is created between a conditioned living area and the open, unconditioned attic area.

Apply caulk, spray foam, or weather stripping to these areas to seal up any leaks. Spray foam should be used on large openings. But be careful: the foam expands and could damage weak wood or lose brick. When purchasing caulk pay careful attention to whether it is rated for interior or exterior use and if you can paint over it.

An insulation kit provides a temporary solution for older windows during winter. Apply a clear plastic sheet to the interior of

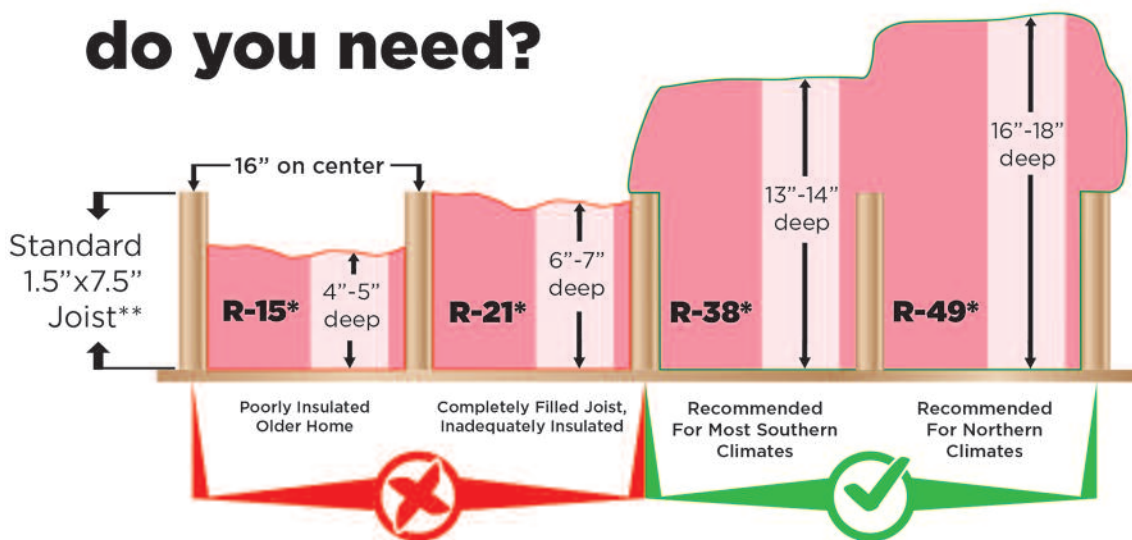
the window, then use a hair dryer to remove wrinkles and make the sheet almost as clear as the glass.

Once leaks are sealed, focus on adding insulation. Insulation is your home's first line of defense in keeping out heat and cold and comes in fiberglass (batt or blown), cellulose, rigid foam board, spray foam, or reflective (also called radiant barrier) forms. Your local hardware store can help you choose the one that best fits your area and particular needs.

When buying insulation, consider its R-value. Typical insulation levels for an attic range from R-30 to R-60, while floor requirements vary from R-13 to R-30.

The most difficult area to add insulation will be your walls. Ideally, you would add wall insulation when replacing the siding on your home. In most areas of the country you will need either R-5 or R-6 insulative wall sheathing, and then fill the wall cavity with blown-in insulation. If you do not have siding or won't be replacing it anytime soon you can cut holes in the wall and blow the insulation in. But this is generally a tricky undertaking and can cause significant damage if not done properly.

How much insulation do you need?



* Recommended Dept. of Energy attic insulation levels for commonly used fiberglass, mineral wool, and cellulose insulation assuming about R-3 per inch.
 ** Standard joists are sold as 2"x8" but usually measure closer to 1.5"x7.5"



Follow us @RENeditor

HARBOR FREIGHT

QUALITY TOOLS AT RIDICULOUSLY LOW PRICES

1,000+ Stores Nationwide • HarborFreight.com

McGRAW *Ideal for Impact Wrench, Finish & Brad Nailers, Stapling, All Purpose Spray Gun & Blow Guns*

20 GALLON, 135 PSI OIL-LUBE AIR COMPRESSOR

NOW \$174.99

SAVE \$75 ~~\$199.99~~

COMPARE TO PORTER-CABLE **\$249.99**
MODEL: 119803399

ITEM 56241/64857 shown

LIMIT 1 - Coupon valid through 5/5/20*

SUPER COUPON

Customer Rating ★★★★★

Handle and Protective Shroud

Powerful Induction Motor "Won't trip your breaker"

135 MAX PSI
1.6 Running HP
4.0 SCFM
Oil Lube Pump

Large Rubber Wheels

Rubber Foot Stabilizers

Easy Access Drain Valve

2x LIFE
25% QUIETER
27% MORE RUN TIME

93717339

SUPER COUPON

FREE WITH ANY PURCHASE

OVER 5,000 5 STAR REVIEWS

SUPER BRIGHT LED/SMD WORK LIGHT/FLASHLIGHT

- Super-Strong, Ultra-Lightweight Composite Plastic
- Magnetic Base & 360° Swivel Hook for Hands-Free Operation
- 3-AAA Batteries (included)
- 144 Lumens

ALL IN A SINGLE SUPER POWERFUL LIGHT

ITEM 63878/63991 COMPARE TO PERFORMANCE **\$13.52**
64005/60566 TOOL MODEL: W2364
63601/67227 shown

93716785

Cannot be used with other discounts or prior purchases. Original coupon must be presented. Valid through 5/5/20 while supplies last. Limit 1 FREE GIFT per customer per day.

SUPER COUPON

20% OFF

ANY SINGLE ITEM*

93717125

Limit 1 coupon per customer per day. Save 20% on any 1 item purchased. *Cannot be used with other discount, coupon or any of the following items or brands: Inside Track Club membership, Extended Service Plan, gift card, open box item, 3 day Packing List Sale Item, Compressor, Hour Jacks, safes, storage cabinets, chests or carts, trailers, welders, Admiral, Ames, Atlas, Bauer, Central Machinery, Crafts, Craftsman, Dayco, Diamondback, Earthquake, Fischer, Hercules, Icon, Joplin, Lyster, Pegasus, Predator, Tailgator, Viking, Volcano, Zurich. Not valid on prior purchases. Non-transferable. Original coupon must be presented valid through 5/5/20.

PITTSBURGH SERIES 2 *"1 SELLING JACKS IN AMERICA"*

RAPID PUMP® 3 TON STEEL HEAVY DUTY FLOOR JACK

- Weighs 70 lbs.

NOW \$89.99

~~\$99.99~~ **SAVE \$45**

COMPARE TO POWERBUILT **\$135.27**
MODEL: 64793

ITEM 56621/56622/56623/56624 shown

93721042

LIMIT 1 - Coupon valid through 5/5/20*

HaulMaster *TRAVERS • STABILIZER • WIDE STABLE*

72" x 80" MOVING BLANKET

NOW \$5.99

~~\$8.00~~ **SAVE 25%**

COMPARE TO BLUE HAWK **\$19.99**
MODEL: 77280

ITEM 69505/62418/66537 shown

93721923

LIMIT 4 - Coupon valid through 5/5/20*

BRAUN *POWER TOOLS*

5000 LUMEN 4 FT. LED HANGING SHOP LIGHT

- 30,000 hour LED life
- Sturdy lightweight design (1.75 lbs.)

NOW \$19.99

~~\$29.99~~ **SAVE 33%**

ITEM 64410

93722315

LIMIT 4 - Coupon valid through 5/5/20*

PREDATOR *GENERATORS*

3500 WATT SUPER QUIET INVERTER GENERATOR

- 11 hour run time

NOW \$699.99

~~\$799.99~~ **SAVE \$1,319**

COMPARE TO HONDA **\$2,019**
MODEL: EU3000iSA

ITEM 56720/63584 shown

93725964

LIMIT 1 - Coupon valid through 5/5/20*

WARRIOR *TOOL SETS*

29 PIECE TITANIUM DRILL BIT SET

NOW \$10.99

~~\$18.00~~ **SAVE 39%**

COMPARE TO DEWALT **\$68.14**
MODEL: DW1369

ITEM 5889/62281/61637 shown

93727259

LIMIT 3 - Coupon valid through 5/5/20*

U.S. GENERAL *TOOL SETS*

44" x 22" DOUBLE BANK ROLLER CABINETS

- 14,000 cu. in. of storage
- 2600 lb. capacity

YOUR CHOICE OF 6 COLORS

NOW \$449.99

~~\$499.99~~ **SAVE 10%**

COMPARE TO SNAP-ON **\$2,735**
MODEL: KRA4813FP80

ITEM 64446, 64956, 64955, 64954, 64443, 64133

SAVE \$2,285

93729849

LIMIT 4 - Coupon valid through 5/5/20*

HaulMaster *WORK PLATFORMS*

18" WORKING PLATFORM STEP STOOL

- 350 lb. capacity

NOW \$19.99

~~\$29.99~~ **SAVE 33%**

COMPARE TO NEOCRAFT **\$39.99**
MODEL: 60635

ITEM 62515/66911 shown

93731217

LIMIT 4 - Coupon valid through 5/5/20*

HARDY *MECHANICS GLOVES*

MECHANICS GLOVES

AVAIL. IN SM, MED, LG, XL, XXL

NOW \$4.99

~~\$5.99~~ **SAVE 17%**

COMPARE TO VALED **\$14.99**
MODEL: 25521

ITEM 62434, 62426, 62433, 62432, 62429, 64178, 64179, 62428 shown

93732708

LIMIT 5 - Coupon valid through 5/5/20*

PORTLAND *WASHERS*

1750 PSI ELECTRIC PRESSURE WASHER

- 1.3 GPM
- Adjustable spray nozzle

NOW \$79.99

~~\$99.99~~ **SAVE 20%**

COMPARE TO BRIGGS & STRATTON **\$174.44**
MODEL: 20600

ITEM 63255/63254 shown

93737896

LIMIT 1 - Coupon valid through 5/5/20*

PORTLAND *TIRES*

10" PNEUMATIC TIRE

NOW \$3.99

~~\$5.99~~ **SAVE 33%**

COMPARE TO FARM & RANCH **\$8.09**
MODEL: FR1055

ITEM 69385/62388/62409/62698/30900 shown

93740961

LIMIT 5 - Coupon valid through 5/5/20*

drillmaster *GRINDERS*

4-1/2" ANGLE GRINDER

NOW \$9.99

~~\$14.99~~ **SAVE 34%**

COMPARE TO PERFORMAX **\$17.99**
MODEL: 2411-1

ITEM 69645/60625 shown

93741402

LIMIT 5 - Coupon valid through 5/5/20*

VIKING *POWER TOOLS*

JUMP STARTER AND POWER PACK

NOW \$69.99

~~\$79.99~~ **SAVE 13%**

COMPARE TO SCHUMACHER ELECTRIC **\$139.99**
MODEL: SL1

ITEM 56797/56798, 64412/62749 shown

93742349

LIMIT 1 - Coupon valid through 5/5/20*

PITTSBURGH *CLAMP/SPREADERS*

4" RATCHETING BAR CLAMP/SPREADER

NOW 99¢

~~\$1.99~~ **SAVE 50%**

COMPARE TO IRWIN **\$6.49**
MODEL: 1964747

ITEM 46805/62242/68974 shown

93742734

LIMIT 8 - Coupon valid through 5/5/20*

PORTLAND *POLE SAWS*

7 AMP ELECTRIC POLE SAW 9.5" BAR

NOW \$59.99

~~\$79.99~~ **SAVE 25%**

COMPARE TO WORX **\$99.98**
MODEL: WG309

ITEM 68862/63190/56808/62896 shown

93743045

LIMIT 2 - Coupon valid through 5/5/20*

luminar OUTDOOR *STRING LIGHTS*

24 FT., 18 BULB, 12 SOCKET OUTDOOR LINKABLE STRING LIGHTS

YOUR CHOICE OF COLOR

NOW \$21.99

~~\$27.99~~ **SAVE 21%**

LINK UP TO 9 STRINGS

BLACK WHITE
ITEM 64488 ITEM 64739
63483 shown

COMPARE TO PORTFOLIO **\$39.98**
MODEL: SLK128C

93745589

LIMIT 2 - Coupon valid through 5/5/20*

PITTSBURGH *TOOL KITS*

130 PIECE TOOL KIT WITH CASE

SAE AND METRIC

NOW \$29.99

~~\$39.99~~ **SAVE 25%**

COMPARE TO ANVIL **\$66.39**
MODEL: A137H05

ITEM 68998/63248/64080/64263/63091 shown

93746121

LIMIT 2 - Coupon valid through 5/5/20*

*Original coupon only. No use on prior purchases after 30 days from original purchase or without original receipt. Valid through 5/5/20.

At Harbor Freight Tools, the "Compare to" price means that the specified comparison, which is an item with the same or similar function, was advertised for sale at or above the "Compare to" price by another national retailer in the U.S. within the past 90 days. Prices advertised by others may vary by location. No other meaning of "Compare to" should be implied. For more information, go to HarborFreight.com or see store associate.

BILL HEDGES AND HIS

COSMIC CAT

Written By
Tim
Trudell

LYONS RETIREE CREATES YOU-TUBE SCI-FI PARODY SERIES STARRING HIS CAT

How many people realize their childhood dreams as adults? Bill Hedges remembers watching episodes of “Lost in Space” on his family’s television set in Lyons, Nebraska. He loved the 1960s science fiction fantasy program. It was the show that ignited his love for movie making. He dreamt of being a filmmaker.

His love of movies led him to work weekends during high school at the Lyons theater. The downtown cinema attracted fans from around Burt County to the town of 700. Hedges worked as a projectionist, making sure people enjoyed movies such as “M*A*S*H,” “Frogs,” “Willard” and “Willy Wonka and the Chocolate Factory.” Watching the movies from the projection room only fueled that passion.

“My favorite movie was the ‘Absent Minded Professor,’” Hedges says.

While most filmmakers invest in a series of expensive equipment, teen-aged Hedges was thrilled when his father gave him an 8mm camera one year for Christmas.

“It was a lot more affordable,” he jokes.

The self-taught filmmaker roamed around town, and anywhere else he could film, creating his vision of the next masterpiece. But, as he matured, life took over. Following high school, Hedges served in the Navy and would eventually spend a few decades with the US Postal Service, working in Fremont. Making the 35-mile one-way trip daily occupied his life. However, once he retired,

Hedges didn’t hesitate to reclaim his love for movies.

The Lyons Theater closed for good in 1985. The building would be sold and serve as a part of a furniture store. After the store closed, the building sat vacant for several years. Fresh into retirement, Hedges thought the old theater would make an impressive movie studio. So, he bought the building. Renovation included





transforming the front lobby to appear as it did in the late 1970s. Hedges keeps his office out front. Decorated in movie memorabilia, the office also has vintage film cameras – including Hedges’ Super 8mm – on display.

Hedges even rebuilt the projection room to include the old film projector used during the theater’s heyday. Merle Hultman of nearby Oakland, Neb., the last owner of the theater before it closed, had the equipment in storage and gave everything to Hedges to restock the room.

Past the double doors that once led to the auditorium with its large movie screen and theater seating, life-sized props of a spaceship and rocks stand front and center. Scale models of the ship and planet surface are just a few feet away. Lights and cameras abound. Scattered among the movie props are remnants from the town’s former bowling alley, tools and other props. Welcome to Cosmic Films Studio. The old Lyons Theater is now home to the stories of Penny, aka Cosmic Cat.

“I get to relive my childhood,” Hedges says. “How many people get to play pretend as adults?”

Storage space in the studio includes other props, such as an Egyptian crypt complete with

columns. Hedges traveled to Illinois one weekend to purchase one of the last remaining computer servers created by Burroughs Corporation in the 1960s. Hedges figures he’ll use it in upcoming episodes.

Cosmic Films Studio extends to the Hedges’ home. Using part of the family’s basement for interior scenes aboard the ship, Hedges goes all out to create a fun and somewhat realistic look at life aboard a spaceship. The basement also includes a film room where Hedges and guests can watch old episodes of “Lost in Space” on blu-

ray or any other movie that may pique his interest. With a sloping floor found in movie theaters, the viewing room includes seats from the Lyons theater. Movie posters hang on the wall outside the theater room, with a working popcorn machine nearby. After catching a movie in the basement, you can head over to the 1960s-themed malt shop, also in the basement. Toss a quarter in the juke box and enjoy the sounds of the era on 45 rpm records.

Before filming his first movie, Penny needed to be trained. Adopting her from the Nebraska Humane Society, Hedges set out to teach Penny how to act. Several months and treats later, she was ready for her close-up. He actually adopted a second cat, Judy, who is the perfect double for Penny. Each cat has her talents and both are used in each movie. The original Penny is excellent for close-ups and scenes where she needs to sit still. Judy’s talents include action scenes.

“I also have stuffed cats, who are the stunt doubles for action scenes,” he says.

More on Page 8



Cosmic Cat From page 7

Joining Penny, with her black coat and beautiful yellow eyes, Hedges travels the universe in search of new life and new planets. What started as an idea to create YouTube videos as parodies of “Lost in Space” – Hedges’ favorite show during his childhood – has transformed into original stories, often with a nod to classic shows, such as “Twilight Zone.”

While it’s fun to create the movies, working with the cats can be challenging.

“It still takes many takes to get what you want on film,” Hedges says. “And in-between shots they wander off in the studio and we have to look for them sometimes. They do enjoy going to the studio though because it gives them a new world to explore.”

Having two episodes of “Cosmic Cat” available on YouTube, Hedges and Penny have enjoyed traveling through space together. Hedges completed filming three episodes over the summer of 2019 and plans to release them throughout 2020. Expanding beyond the duo, episodes, with each written and directed by Hedges, include area actors, eager to act alongside the feline star.

Katie Otten, who, along with husband Joshua Caito, is a renowned cosplay performer in the Midwest, has performed in a couple of episodes. Portraying the human form of Penny, Otten enjoyed her time with the duo and looks forward to future endeavors.

“Working with him is a blast,” she says. “Because he’s kind, creative and so dedicated.”

Hedges’ direction and production management also impressed her. “Each time we had two full days of filming, but we were incredibly efficient,” Otten says. “He would have everything planned out and



COSMIC FILM STUDIO USES LIFE-SIZED PROPS AND MINIATURE MODELS.



BILL EVEN INSTALLED A FILM SCREENING ROOM IN HIS HOME.

story boarded already.”

Hedges’ love for his craft is evident with the attention to detail with the studio equipment and props. The life-sized props match the scaled down models perfectly, so when you watch an episode, you don’t notice the transition from one scale to the other. His editing skills are outstanding. But, he’s quick to say it’s more than a one-person show.

“I am lucky that I have

professional actors, mainly from Omaha and Lincoln, who have volunteered to help with my series, and other crew as well,” Hedges says. “Nebraska has a lot of independent filmmakers who help each other out with their projects, and I’ve met some at film festivals, some from helping them with their movies, and some have literally walked into the studio for a visit and then told me that they’d like to be a part of any of my projects.”

“I also have a small core group in Lyons that I use to help as my crew, and sometimes I’ll ask friends to act in it for some parts that I know they’d be good in. Everyone has told me that they really enjoy working on the movies and have asked to come back for future episodes. It’s definitely a different experience for them working here since the series is unique and different.”

Hedges’ filming talents have come in handy for the Lyons community. In 2015, he created a film history of downtown, capturing the town from the 1950s through recent years. Each era used vehicles and costumes accurate to the decade. The film was premiered on Main Street. Lyons, as part of an art grant to help rural communities, constructed a theater that looks like a storefront. The faux storefront can be lowered to the ground, becoming a stage or a set of bleachers can be rolled on to it. People lined up there to watch

“Decades,” enjoying the historical look at their hometown.

While he enjoys making the “Cosmic Cat” movies, Hedges doesn’t plan to challenge George Lucas or Steven Spielberg anytime soon. He’s

having fun reliving his youth and spending time with his feline actors. He’s pretty sure the cats also enjoy starring in the movies.

“They just like getting out of the house and seeing something new.”



A Better Way to Build

Build better, faster and for less money.

Tour our 2020 Models on display or watch our Virtual Factory Tour Online.



HERITAGE HOMES

1-800-759-2782 | Call for a Plan Book

www.heritagehomesofne.com

MarkeTech

where marketing and technology meet

Attend the midwest premier marketing conference in Kearney, NE on April 15, 2020 with speakers from across the country!

www.marketchconference.com



Early bird rates end March 20th

Security Tips for Connected Devices

by Abby Berry

Today's market offers a plethora of new gadgets and devices that claim to make our homes smarter, safer and more efficient. But as with any new smart technology, consumers should take extra precautions to ensure these devices are secure.

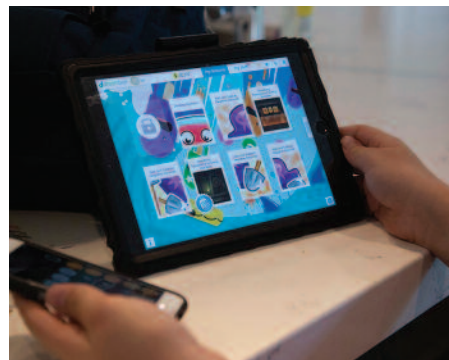
Internet-connected cameras have brought significant convenience to the way we monitor the security of our homes, children—even our furry family members! With the simple swipe of a smart phone, homeowners can instantly keep a watchful eye from afar. But in recent months, some consumers found themselves in scary situations when hackers were able to tap into Internet-connected security cameras in their homes. This enabled the hackers to view and speak to the people, including children, inside the homes.

As connected devices become increasingly popular, it's important that we know how to secure our digital lives. The U.S. Department of Commerce offers the following tips for protecting smart devices:

- Get creative with passwords. Change your device's factory security settings from the default password. This is one of the most important steps to take in the protection of internet-connected devices. Consider creating the longest password or passphrase permissible, and use familiar phrases you'll remember,



As connected devices, like home monitoring and security cameras, become increasingly popular, it's important that we know how to secure our digital lives.



like the lyrics to your favorite song.

- Keep tabs on your apps. Most connected devices are supported by a smart phone application. Your smart phone could be filled with apps running in the background or using default permissions you never realized you approved, gathering personal information without your knowledge while also putting your identity and privacy at risk. Check your app permissions and say “no” to privilege requests that don't make sense.

- Secure your network. Properly secure the wireless network you use for Internet-connected devices. Consider placing these devices on a separate and dedicated network.

- Connect and protect. Whether it's your computer, smartphone, game console, camera or other connected devices, the best defense is to stay on top of things by updating to the latest security software, web browser and operating system. If you have the option to enable automatic updates to defend against the latest risks, turn it on.

Convenient, connected devices are here to stay—and unfortunately, so are the hackers. But by taking extra steps to safeguard your network and devices, you can keep your digital life secure as possible.

“To you, it’s the **perfect lift chair**.
To me, it’s the **best sleep chair** I’ve ever had.”

— J. Fitzgerald, VA



You can’t always lie down in bed and sleep. Heartburn, cardiac problems, hip or back aches – and dozens of other ailments and worries. Those are the nights you’d give anything for a comfortable chair to sleep in: one that reclines to exactly the right degree, raises your feet and legs just where you want them, supports your head and shoulders properly, and operates at the touch of a button.

Our **Perfect Sleep Chair®** does all that and more. More than a chair or recliner, it’s designed to provide total comfort. **Choose your preferred heat and massage settings, for hours of soothing relaxation.** Reading or watching TV? Our chair’s recline technology allows you to pause the chair in an infinite number of settings. And best of all, it features a powerful lift mechanism that tilts the entire chair forward, making it easy to stand. You’ll love the other benefits, too. It helps

with correct spinal alignment and promotes back pressure relief, to prevent back and muscle pain. The overstuffed, oversized biscuit style back and unique seat design will cradle you in comfort. Generously filled, wide armrests provide enhanced arm support when sitting or reclining. **It even has a battery backup in case of a power outage.**

White glove delivery included in shipping charge. Professionals will deliver the chair to the exact spot in your home where you want it, unpack it, inspect it, test it, position it, and even carry the packaging away! You get your choice of stain and water repellent custom-manufactured Duralux with the classic leather look or plush microfiber in a variety of colors to fit any decor. **Call now!**

The Perfect Sleep Chair®
1-888-816-6627

Please mention code 112645 when ordering.



REMOTE-CONTROLLED
EASILY SHIFTS FROM FLAT TO
A STAND-ASSIST POSITION



Long Lasting DuraLux



DuraLux II Microfiber



Because each Perfect Sleep Chair is a custom-made bedding product, we can only accept returns on chairs that are damaged or defective.

© 2020 firstSTREET for Boomers and Beyond, Inc.

Keep your family pets safe around electricity

For pet owners, playful dogs and curious cats become part of the family. Responsibility is an important part of pet ownership, and your pet's safety depends on you. You can help keep your furry friend safe by learning about and taking action on potential electrical hazards in your home.

"Puppies and kittens are naturally curious and tend to turn unexpected household items into play or chew toys," says Molly Hall, executive director of the Energy Education Council's Safe Electricity program. "Puppy or kitten-proofing a home will help keep this new member of your family safe."

Electrical cords can easily become an object of play for pets, but when sharp teeth clamp down on the cord and break through the rubber coat and expose the wire, this can shock your pet and become a fire hazard in your home. Here are some tips to prevent cords from becoming a chew toy:

- Wind up excess cords and hide

them from view or place cords out of pet's reach. This could be done by hiding them behind furniture or hanging them off the floor.

- Coat cords with a bitter substance to make them undesirable to pets. Appropriate and safe products can be purchased online or at pet stores.

- Reprimand pets for playing with electrical cords. Pets need to learn these are not toys.

Remember to continuously check cords for fraying or bite marks, and replace them accordingly.

"It may only take one bite with sharp teeth to create a shock or start a fire," Hall warns. "Provide your pet with new and different chew toys to keep them entertained so electrical cords do not become a dangerous replacement."

Make sure plugs are completely plugged into outlets. Partially exposed prongs are a hazard for curious pets. Remember to unplug all appliances and electronics not in use to cut electric current.

Discourage pets from sleeping near

or behind electronics or appliances. Many pets are attracted to the warmth, but this is a potential fire hazard. Pets need to be kept away from all electrical connections.

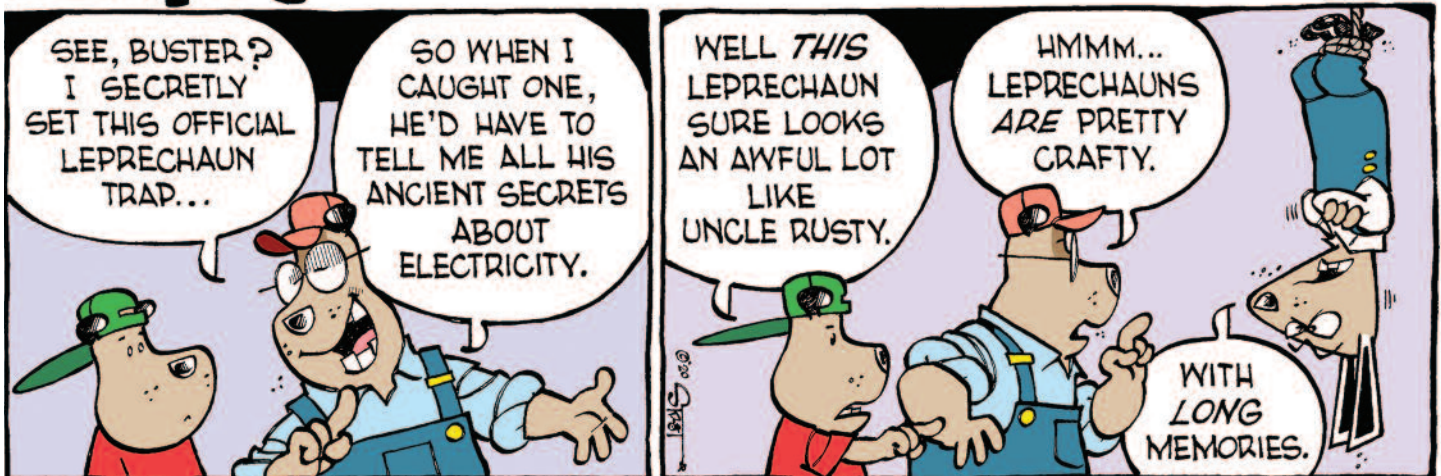
All outlets near sinks or bathtubs should be equipped with a ground fault circuit interrupter (GFCI). Playful pets can knock radios, curling irons, and other electrical devices into water, creating a dangerous situation. GFCIs stop the flow of electricity instantly if there is a problem and can save lives.

For those with fish, be sure cords attached to an aquarium have a drip loop—cords that slack below the outlet—to make sure water does not run into the outlet.

If a pet should receive a shock, never touch the animal until you know it is away from the power source or the electric current is shut off in order to prevent injury to yourself. Once it is clear to approach the pet, give it medical treatment immediately.

For more pet safety information, visit SafeElectricity.org.

Murphy





WE NEVER FORGET WHERE WE CAME FROM

Join Touchstone Energy Cooperatives in celebrating
the power of human connections.



Touchstone Energy[®]
Cooperatives of Nebraska

RESCO to the Rescue

Supply co-op quietly meets rural power needs

by Dave Hoopman

By April 11, 2019, winter was supposedly three weeks in the past, a falsehood laid bare by the snow, ice, and wind storms wreaking havoc that day on rural power systems across the upper Midwest.

Hardest hit was Freeborn-Mower Cooperative Services in southeast Minnesota, with an electric distribution system serving more than 18,000 member-owners. Roughly half this system was knocked out with nearly 500 poles down, many snapped off at ground level by the combination of stiff winds and heavy ice accumulation on the wires. Remarkably, repairs progressed so rapidly that borrowed line crews were able to be released from mutual assistance work less than a week later.

No single factor enables such a recovery. Among the affected power providers across Minnesota, Iowa, and Wisconsin, credit goes to a stellar work ethic, robust mutual aid programs—line crews from 17 cooperatives in neighboring states were dispatched to Freeborn-Mower—and not least, a multi-state organization designed to meet the special challenges of building rural electric utility systems. Last April's storm response would probably have taken a good deal longer and would most certainly have been costlier, had it not been for the existence of RESCO—known more formally as the Rural Electric Supply Cooperative—a not-for-profit provider of materials and equipment for rural electric co-ops and, in Nebraska, public power districts and municipal utilities.

The company that became RESCO was initially incorporated in 1936,

largely in response to the growth of rural electrification being stifled by lack of access to materials. “There were poles standing with no wires attached to them,” RESCO President and CEO Matt Brandrup told us at the cooperative’s Middleton, Wisconsin headquarters in December.

“The investor-owned utilities held a stranglehold on the supply chain for needed materials,” he said. “We broke that stranglehold on behalf of public power.”

Economy and Empathy

A lot has changed in the decades since for-profit utilities with no interest in serving lightly-populated areas treated the rise of rural electrification as an irritant to be snuffed out. But whether the motivation was deliberate denial of resources as in the past, or the more benign differences between business models as they play out today, there are strong advantages, especially for people served by public-power utilities, in choosing to obtain basic materials through a RESCO-style cooperative.



RESCO provides materials and equipment for rural electric co-ops and, in Nebraska, public power districts and municipal utilities.

In Nebraska, 17 public power districts and eight municipal utilities are RESCO members.



“Our not-for-profit business model allows us to price very competitively, which ultimately benefits the end-use consumer,” Matt Brandrup says, “and if there are profits, that money is returned to members in the form of patronage credits—a true not-for-profit approach.”

Moreover, growth in the number of utilities choosing membership builds the cooperative’s purchasing power, ultimately allowing RESCO to keep its gross margins lean—or even reduce them—and still manage to cover its relatively fixed overhead costs.

The cooperative provides construction materials and varied supplies for member utilities in nine states: Illinois, Iowa, Michigan, Minnesota, Montana, Nebraska, North Dakota, South Dakota, and Wisconsin. In Nebraska, 17 public power districts and eight municipal utilities are RESCO members.

Phil Burke, CEO of the Polk County Rural Public Power District, is a director on the RESCO board, and stresses the need to be mindful



of costs passed along to Nebraska electric ratepayers.

“Our customers might not give too much thought to the transformers, poles, and wires they see as they drive around our district, but we are very conscientious about where it comes from,” Burke observes. “We know that every bolt, insulator and wire is paid for by our customers and we need to be thoughtful about the materials we use and the amount they cost. The materials we buy need to perform well at a good price point and RESCO can provide that. Savings on material costs can really cut down on our costs, and in turn, our customers’ electric costs.”

Patronage credits are another feature of co-op membership that’s not to be ignored. Brandrup noted that during the past five years, RESCO has returned some \$520,000 to its Nebraska members. “Our for-profit competitors do not do that and it very much differentiates us,” he says.

A further differentiation is that people whose power providers are

served by RESCO’s competitors can’t count on enjoying any of the benefit associated with local ownership and control. As Bruce Tegtmeier, a director of the Norris Public Power District and member of the RESCO board explains, “It’s important that we are properly represented as members. Every RESCO member-owner has the same equal say as every other member. It gives us fair, direct representation and allows us to make decisions for our greater benefit.”

There When It Matters

A mission focused on economic savings—as opposed to a fatter bottom line—and an organizational structure familiar to consumers served by public power districts might add up to significant attractions all by themselves. But those attractions don’t fade away even at times when they aren’t necessarily at the top of everyone’s priority list, that is, the times when weather intervenes to cut off the reliable power that makes a modern

society possible.

Arguably, the greatest advantage for utilities purchasing supplies through their own member-controlled co-op is most apparent when there’s no time to waste obtaining materials and getting construction done, so as to make those occasional trips back to our pre-electricity past as brief as possible.

To that end, early in 2019 RESCO established a warehouse in Kearney, and has pre-positioned dedicated storm-response trailers in the states it serves, to support resilient electric systems that can bounce back rapidly. When damaging weather occurs, RESCO can have people and materials on the scene that same day to help restore power.

Jeff Burk is purchasing and warehousing manager for York, Nebraska’s Perennial Power, a RESCO-member public power district. Burk notes that RESCO is “conveniently located, so it is like they are storing materials for us. It makes for very fast delivery.”

Like so much about the modern U.S. energy system, it’s the things you don’t notice that tell you it’s working. Circumstances that would bring the end-use electric ratepayer in direct contact with RESCO are uncommon, and yet the cooperative’s existence relates directly to those individual ratepayers. Its presence for purposes of storm response and even routine construction and maintenance ultimately saves money and reduces inconvenience for the ratepayer, and most of the time it goes happily unnoticed.



Energy efficient landscaping tips

by Pat Keegan

Q : A friend told us that if our landscaping is done right, it can help lower our home's monthly energy bill. What choices can we make that will reduce our home energy use?

A : Your friend is right. The decisions you make about your home's landscaping can help you stay cooler in the summer and warmer in the winter. With summer just around the corner, let's start by looking at how strategic planting can help cool your home.

Direct sunlight hitting windows is a major contributor to overheating your home during summer months. By planting trees that block sunlight, you can improve comfort and reduce your air conditioning energy use. If the trees eventually grow tall enough to shield your roof, that's even better.

The most important windows to shade are the ones facing west, followed by windows that face east. Morning and evening sunlight hits the home more directly than mid-day sunlight. Also, an eave on the south side of your home can help shade your windows during mid-day sun.

If you live in a colder climate, planting deciduous trees that lose their leaves in fall will shield your windows in summer and allow sunlight in during winter to help warm your home. A simple approach that can deliver some shade the first year is to plant a "living wall" of vines grown on a trellis next to your home.

One cooling strategy is to make sure your air conditioning compressor has some plants near it. Just make sure the plants aren't too close. The compressor should have a five-foot space above it and a two-

three-foot gap all the way around so that it gets enough air movement to do its job.

There are two other factors to consider that are important in some areas of the country:

1. Water is becoming more precious and more expensive. When you pay your water bill, much of that cost is for the energy required to pump water to your home, or perhaps you have your own well. Either way, reducing water use saves you money and reduces energy use.

2. If you live in an area that has wildfires, you should definitely take that into consideration as you develop a landscaping plan. What and where you plant on your property can either increase or decrease the risk of fire reaching your home.

Now let's talk about how landscaping impacts your home's energy use and comfort in the winter.

If you live in a colder climate, a

solid wind break can cut harsh winter winds. The best solution for this is a solid row of trees (preferably evergreen) on the windward side of the home, with shrubs underneath the trees to keep the wind from sneaking through. If you live in a warmer climate, you would not want a wind barrier as wind flow will help cool your home.

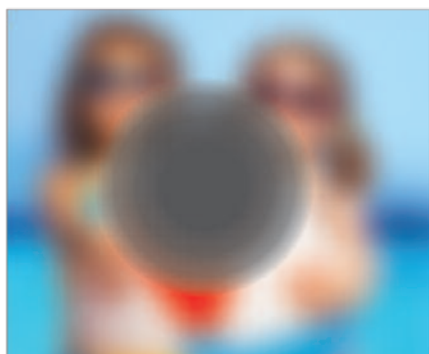
If you live in a cooler climate that isn't too humid, planting a row of shrubs a foot from your home can provide more efficiency. By stopping air movement, it can form a dead air space around the home that acts as "bonus" insulation. While you're at it, you could add some foundation insulation if you have a home with a basement or if it's built on a slab. In a humid climate, however, leave several feet of space between landscaping and the home as air flow is necessary to avoid moisture-related home damage.

These are just a few ideas to help you get started. I should also note that as with any landscaping projects that require digging, remember to dial 8-1-1 to ensure all underground utility lines are properly marked and flagged *before* you start the work. Happy planting!



Advanced Technology Allows Macular Degeneration Patients To See Again

And Allows Many Low Vision Patients To Drive Again



*A scene as it might be viewed
by a person with age-related
macular degeneration*



*Same scene of Grandchildren
as viewed through telescope
glasses.*

For many patients with macular degeneration and other vision-related conditions, the loss of central visual detail also signals the end to one of the last bastions of independence - driving. Nebraska optometrist, Dr. Robert Stamm is using miniaturized telescopes which are mounted in glasses to help people who have lost vision from macular degeneration and other eye conditions.

“Some of my patients consider me their last chance or people who have vision loss” said Dr. Stamm, one of only a few doctors in the world who specializes in fitting bioptic

telescopes to help those who have lost vision due to macular degeneration, diabetic retinopathy, and other eye diseases.

Imagine a pair of glasses that can improve your vision enough to change your life. Bioptic telescopes may be the breakthrough in optical technology that will give you back your independence. Patients with vision in the 20/200 range can many times be improved to 20/50.

Bioptic telescopes treat both dry and wet forms of macular degeneration as well as other vision limiting conditions.

While there is currently no cure, promising research is being done on many fronts. “My job is to figure out everything and anything possible to keep a person functioning” says Dr. Stamm “Even if it’s driving”.

“The major benefit of the bioptic telescope is that the lens automatically focuses on whatever you’re looking at,” said Dr. Stamm. “It’s like a self-focusing camera, but much more precise.”

For more information and to schedule an appointment today, call:

Robert Stamm, O.D.
Low Vision Optometrist
Member IALVS

Toll Free:
(877) 393-0025



Calendar of Events

MARCH

NORTHEAST

March 1, Northeast Area Jazz Ensemble, Plainview High School Auditorium, Plainview, Neb., 2 p.m.

March 5-14, Norfolk Community Theatre presents Orson Wells' War of the Worlds, Northeast Community College, Cox Activity Center, Norfolk, Neb., 7 p.m.

March 7, 2020 Norfolk Gun Show, Divots Devent Center 4200 W. Norfolk Ave, Norfolk, Neb., 9 a.m. – 5 p.m.

March 10, Annual Ag Appreciation Dinner, Nielsen Center, West Point, Neb., Social hour at 6 p.m., dinner at 7p.m. Entertainment: Brugger Bros.

March 11-14, St. Patrick's Day Celebration, O'Neill, Neb. Residents in O'Neill prepare for the St. Patrick's Day celebration honoring the patron saint of Ireland.

March 20-22, Norfolk Home Builders Home and Garden Show, Chuck M. Pohlman Ag Complex, 2301 E. Benjamin Ave., Norfolk, Neb.

NORTHWEST

March 21, Nite on the Town, Bayard American Legion, 5:00 pm. This is a fundraiser for Chimney Rock Pioneer Days, the night will include a steak and shrimp dinner served at 6:00 p.m., live auction and a silent auction. Tickets are \$25 and can be purchased at Chimney Rock Chiropractic in Bayard or Federal Crop Agency in Scottsbluff.

March 27-29, Scottsbluff Kennel Club Dog Show, Scotts Bluff County Fairground, 130625 County Rd E, Mitchell, Neb. A three day AKC all breed dog show.

SOUTHEAST

March 14, Shamrock Shuffle 5K Walk/Run/ Crawl, Jefferson County Fairgrounds 4H Bldg., Fairbury, Neb., 10 a.m. This is the one event of the year where you can run, walk or crawl while wearing your favorite Irish gear. Stick around for the post-race celebration with food, awards, giveaways and live entertainment by Shawn Cole Duo.

SOUTHWEST

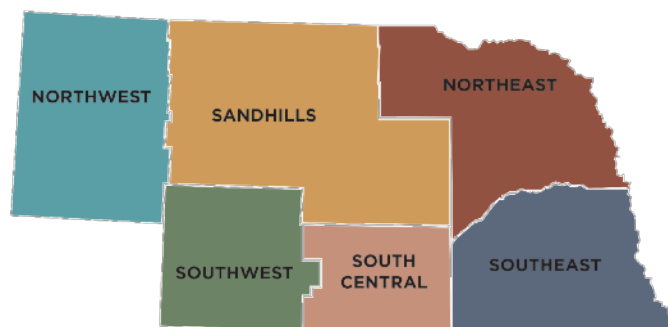
March 14-15, National Quilting Day Celebration, Arbor Lodge Mansion, 2600 Arbor Ave, Nebraska City, Neb., 11 a.m. - 4 p.m. Arbor Lodge Mansion will host a special exhibit featuring quilts from the Arbor Lodge collection as well as heirloom quilts and needlework from the late 1800s and early 1900s. Demonstrators from the Heritage Needlework Guild will be on hand throughout the weekend to share their talents.

SOUTH CENTRAL

March 24, Highline Electric 82nd Annual Meeting, Phillips County Event Center, Holyoke, Colo. A meal will be provided. Doors open at 5:00 for registration and the meal will be from 5:30 p.m. to 6:30 p.m. The business session will begin promptly at 6:30 p.m. You must be present to win one of the many door prizes, plus members in attendance will receive a gift.

March 18, Crane Photography Class, The Archway, Kearney, Neb., 9 - 10:30 a.m. Take outstanding wild life pictures, even with a cell phone. Instructors Patty Geist and Don Brockmeier will help you create beautiful images of your crane viewing adventure to enjoy and share for years to come. Register at www.archway.org

This calendar is published as a service to readers and the communities served by Nebraska's public power districts and electric cooperatives. Rural Electric Nebraskan publishes events free of charge as space allows, giving preference to free community festival and events in and around areas served by subscribing member-systems. We strive for accuracy, but please note that events, dates and times may change without notice.



To add events to Calendar, please email info to wprice@neea.org or mail your info to: Calendar, Rural Electric Nebraskan, PO Box 82048, Lincoln NE 68501. Please submit info two months before the date of the event.

Niobrara's Barry DeKay elected NPPD chair for 2020

Barry DeKay of Niobrara was elected as Nebraska Public Power District's Board Chair for 2020 following that body's annual election of officers in Columbus, replacing Gary Thompson of Clatonia who had served the past two years.



Barry DeKay

Also elected were Bill Johnson of Pilger as first vice chair, Mary Harding of Plattsmouth as second vice chair, and Jerry Chlopek of Columbus as secretary. NPPD Vice President and Chief Financial Officer Traci Bender was elected treasurer.

"I look forward to leading the Board in 2020 as we continue to work to keep our electric rates stable, provide strong customer service, and monitor and prepare for future regulations that would impact NPPD and our customers," he stated. "I also want to thank Director Thompson for his leadership the past two years as Chair of the Board."

DeKay represents Subdivision 2, which consists of Keya Paha, Boyd, Holt, Knox, Cedar, Garfield, Wheeler, Valley, Greeley, Sherman, Howard and Boone Counties.

DeKay began his term of office in 2015 when he was first elected to the NPPD Board, filling the seat previously held by Dennis Rasmussen. A native of Knox County, DeKay has been ranching

for 43 years with his brother, and they are the fourth generation to work the family land.

DeKay served on the Board of the Niobrara Valley Electric Membership Corporation between 1999 and 2014, holding the office of vice president in 2002-2003, and president between 2003-14. In addition, he held the titles of treasurer, vice president and president with the Nebraska Rural Electric Association.

He and his wife, Brenda, have two children. He is a member of the Knox County Cattlemen and Nebraska Cattlemen, serves as president of the Niobrara Valley Hospital Foundation, and is a council member of Sacred Heart Parish of Boyd County. He is also a high school and college basketball official.

YOUR EDUCATION IN ACTION.

At Northeast, you'll do more than learn your program of study, you'll live it. Through internships and hands-on experience, you'll graduate in two-years and be ready for action!

Northeast does not discriminate based upon any status protected by law or college policy. Please go to northeast.edu/handiscrimination for details.

Northeast
community college

801 E. Benjamin Ave. | Norfolk, Nebraska
(402) 371-2020 | (800) 348-9033

northeast.edu

Serve up a caravan of fun party dishes

Make your next fiesta one to remember with colorful decor, festive touches and, perhaps most importantly, unique and mouthwatering recipes that bring guests back for seconds.

To achieve the ideal flavors of a fiesta done right, try bringing something new to the table with recipes like these party-pleasing Tortilla Pizzas for a special main dish, crunchy and refreshing Coleslaw with Green Chile Dressing on the side.

These party-perfect recipes can help you take flavors to new heights while adding a kick of spice when you incorporate quality ingredients like Rio Luna Organic Peppers. The peppers are cultivated by a company with more than three decades of experience. They manage the whole pepper process from annual seed selection to grower partnerships, cultivation and packing.

Available in four spicy varieties – Diced Jalapenos, Nacho Sliced Jalapenos, Diced Green Chiles and Large Chopped Green Chiles – you can add a pop of peppers to your next celebration. Because the peppers are organic certified, non-GMO, fat free, cholesterol free, low calorie and kosher, you'll be able to pack an extra punch of spice without serving up unnecessary ingredients.

To find more ways to spice up your fiestas as well as everyday recipes, visit riolunapeppers.com/our-meals



Tortilla Pizzas

- 4 flour tortillas (8 inches)
- 1 can (15 ounces) refried black beans
- 4 fresh plum tomatoes, chopped
- 1 can (4 ounces) Rio Luna Organic Nacho Sliced Jalapenos, drained
- 1 1/3 cups shredded Mexican cheese blend
- 1 tablespoon chopped fresh cilantro
- chipotle-ranch dressing

Heat oven to 400 F.
Bake tortillas directly on oven rack 2 minutes. Cool. Spread 1/4 cup beans onto each tortilla. Top evenly with tomatoes, jalapenos and cheese.

Bake 8 minutes, or until cheese is melted. Sprinkle with cilantro just before serving.

For added flavor, drizzle pizzas with chipotle-ranch dressing.

Tantalizing Toppings For Tacos

When it comes to supplying fiesta foods that fit almost anyone's taste, tacos are a go-to party favorite. However, trying to list all the possible taco-topping options can be an overwhelming task for many hosts. Along with your choice of taco filling, consider these toppings when building the perfect taco bar at your next fiesta:

- Shredded cheese
- Sour cream
- Beans (black, pinto or refried)
- Salsa
- Shredded lettuce
- Rice
- Rio Luna Organic Peppers
- Chopped tomatoes
- Chopped onions
- Diced avocado or guacamole
- Sliced black olives
- Corn
- Cilantro



Coleslaw with Green Chile Dressing

- 1 1/2 cups mayonnaise
- 1 cup sour cream
- 3/4 cup Rio Luna Organic Diced Green Chiles, drained
- 6 tablespoons apple cider vinegar
- 2 tablespoons Dijon mustard
- 2 tablespoons Sriracha sauce
- 2 tablespoons agave nectar
- 2 cups shredded napa cabbage
- 1 cup shredded red cabbage
- 1 cup shredded carrots
- 1/2 cup thinly sliced white onions
- 2 1/4 teaspoons kosher salt, plus additional, to taste
- 1/2 teaspoon ground black pepper, plus additional, to taste

In medium bowl, whisk mayonnaise, sour cream, chiles, apple cider vinegar, Dijon mustard, Sriracha and agave nectar until well blended.

In large bowl, combine napa cabbage, red cabbage, carrots, onions, salt and pepper. Add mayonnaise mixture; toss until well coated. Season with additional salt and pepper, if desired, to taste.

Tip: Coleslaw can be prepared ahead of time and refrigerated up to 1 day. Toss before serving.

Horseradish Meatloaf

- | | |
|---------------------------------------|-----------------------------------|
| 1 1/2 lb. ground beef | 2 teaspoons salt |
| 2 cups breadcrumbs (approx. 6 slices) | 1/4 teaspoon pepper |
| 1 egg (beaten) | 1/4 teaspoon dry mustard |
| 1 1/2 cup whole milk | 1/2 teaspoon sage |
| 4 tablespoons chopped onion | 2 teaspoons Worcestershire sauce |
| 1 tablespoon catsup | 2 teaspoons (or more) horseradish |

Shape into 8 individual loaves and place on lightly greased baking sheet and cover with the following sauce. Sauce – 1/4 cup chopped onion, 1/4 cup sugar, 1/8 teaspoon pepper, 1/4 cup catsup, 3 tablespoons vinegar, 1 teaspoon Worcestershire sauce. Cook sauce for 5 minutes, then pour over meatloaves. Bake loaves for one and a half hours at 350 degrees.

Sharon Kindschuh, Beemer, Nebraska

4 Bean Baked Beans

- | | |
|------------------------------|------------------------|
| 1/2 lb. browned, diced bacon | 1 cup brown sugar |
| 2 medium onions, diced | 1/2 cup vinegar |
| 2 1 lb. cans butter beans | 1 teaspoon dry mustard |
| 1 1 lb. can lima beans | 1/2 cup BBQ sauce |
| 1 1 lb. can kidney beans | Dash of liquid smoke |
| 1 1 lb. can pork-n-beans | |

Place in crockpot on low for four hours. Or bake in oven at 350 degrees for one hour.

Katherine Weatherwax, Oxford, Nebraska

Peanut Butter Cheesecake Pie

- | | |
|------------------------------|--|
| 1 8 oz. package cream cheese | 1 large carton prepared topping or 1 package powdered dream whip (mixed according to directions) |
| 1/2 cup peanut butter | |
| 1 cup powdered sugar | |
| 1/2 cup milk | |

Blend all together and place in prepared graham cracker crust. Top with crushed peanuts or nuts. Freeze for 2 to 3 hours, then leave in fridge or in freezer. Fast and simple to prepare and very yummy.

Bonnie Ross, McCook, Nebraska

February Recipe Correction – Baked Fudge Pudding

Instead of putting 1 3/4 cups hot water in separate baking pan, pour hot water over the top of mix and topping in the pan then bake.



KILL LAKE WEEDS

Proven AQUACIDE PELLETS
Marble size pellets. Works at any depth.

 <p>Before</p>	 <p>After</p>
---	--

10 lb. bag treats up to 4,000 sq.ft. **\$94.00.**

50 lb. bag treats up to 20,000 sq.ft. **\$345.00.**

FREE SHIPPING! Certified and approved for use by state agencies. State permit may be required. Registered with the Federal E. P. A.

800-328-9350

KillLakeWeeds.com

Order online today, or request free information.

Our 65th year

AQUACIDE CO.

PO Box 10748, DEPT 38C
White Bear Lake, MN 55110-0748




FREE MATERIALS

Soon Church/Government Uniting,
Suppressing "Religious Liberty"
Enforcing "National Sunday Law."
Be informed! Need mailing address only.
TBS, Box 99, Lenoir City, TN 37771
thebiblesaystruth@yahoo.com
1-888-211-1715

Want to work from home?

Legitimate work from home company.
Call/text Karen Hippe 913-244-8929,
Karen@fpc-1.com.
No sales, no risk, no inventory.
Your life, your dreams, your business.
<http://www.livetotalwellness.com/karenhippe>

We'll rent hunting rights from you.
Seriously looking for duck & goose
habitat. Encourage young sportsmen
by providing safe, private access.
You make the rules.
303-460-0273

EVERYONE HAS A CELLPHONE!

Generate direct, passive,
"automated" residual income from
the comfort of your "mobile office!"
"Nothing happens unless/until YOU
take action!" Text moreinfo to 41242
www.BeyondLocal.biz

NEBRASKA RURAL ELECTRIC ASSOCIATION

General Manager (Chief Executive Officer of the Association) Lincoln, Nebraska

NREA is the statewide trade association representing 25 public power districts and 9 rural electric cooperatives across the State of Nebraska. The Board of Directors (Board) seeks qualified candidates with the ability to oversee the services provided to the membership of the association.

The Board is seeking a leader who possesses outstanding communication and management skills, and the ability to administer a member-focused association. The ideal candidate must have 3-5 years of successful senior management experience and effective leadership skills. Candidates with a clear understanding of the challenges facing rural Nebraska, a strong commitment to address the needs of rural areas, and a solid understanding and familiarity with the rich Nebraska culture will be preferred.

The successful candidate will have high integrity, encourage teamwork, and inspire others, while providing innovative, visionary, and strategic leadership to both the NREA staff and association members. The ability to quickly grasp the operational and financial requirements of the electric utility industry is essential. Interest in building relationships and establishing trust with team members, directors, managers, the community, and associated organizations is paramount.

The General Manager is responsible for the direct management of the NREA staff, which provides its members service and assistance in the areas of: job training and safety; legislative advocacy; regulatory and legal compliance; public and consumer relations; employee, director and management training; and credit union management. This position reports directly to the Board and advises and assists the Board on matters of policy, key financial matters, operational affairs, and the development of the association's strategic direction.


NREA is located in Nebraska's state capital. Lincoln has a population of 300,000 and a rich quality of life that includes excellent educational, cultural, and recreational opportunities. The association offers an excellent benefits package, including a competitive salary commensurate with qualifications.

Qualifications and Requirements:

- Bachelor's Degree in a related field or a combination of education and experience;
- Three to five years of demonstrated senior management experience;
- Strong verbal and written communication skills;
- Familiarity of Nebraska is strongly preferred.

Please electronically submit cover letter, resume, and a minimum of three professional references by February 29, 2020 (finalists are expected to be selected by May 14, 2020), to:
David A. Jarecke, Interim General Manager, NREA c/o Jennifer Lilledahl
Email: jen@nebrenergylaw.com
An Equal Opportunity Employer. All replies are confidential.

DID YOU KNOW THAT YOU COULD GET A RURAL ELECTRIC NEBRASKAN SUBSCRIPTION FOR \$10 PLUS TAX? JUST CALL THE NICE FOLKS AT REN AT 402-475-4988.



MY MOM MOVED INTO TOWN AND WOULD REALLY LIKE TO READ ABOUT RURAL LIFE. I WILL GET HER A SUBSCRIPTION FOR HER BIRTHDAY. THANKS FOR THE GREAT GIFT IDEA.

BUSINESS CAPITAL FINANCING!

Could your business use additional money to "grow," take advantage of new opportunities or get through a tight pinch? If the banks say "no" ... we can help!
Free Application/No Obligation!
www.BestFundingPartners.com



Cooperative power.


TRANSFORMED.

As a cooperative we are changing together. We are committed to delivering responsibly generated electricity while working to ensure your power remains reliable and affordable. Because whatever the future holds, we'll power it.



TRI-STATE

To learn more about our Responsible Energy Plan, visit www.tristate.coop

A Touchstone Energy® Cooperative 



TV Packages Built For You



FREE Voice Remote with the Google Assistant



Voice Remote requires internet-connected Hopper, Joey, or Wally device. Customer must press Voice Remote button to activate feature. Google and YouTube are trademarks of Google LLC.

AMERICA'S TOP 120

190 Channels
\$59.99/mo.

HGTV **nickelodeon** **ESPN**

Local channels included!

AMERICA'S TOP 120 PLUS

190+ Channels
\$74.99/mo.

NETWORK **NETWORK** **ESPN NETWORK**

Even more sports and entertainment!

AMERICA'S TOP 200

240+ Channels
\$84.99/mo.

Hallmark Channel **Disney Junior** **div network**

The best of America's Top 120 Plus and more!

Smart HD DVR Included | 2-Year TV Price Guarantee

All offers require credit qualification, 2-year commitment with early termination fee, and eAutoPay. Prices include Hopper Duo for qualifying customers. Hopper, Hopper w/Sling, or Hopper 3 \$5/mo. more. Upfront fees may apply based on credit qualification. Fees apply for additional TVs: Hopper \$15/mo., Joey \$5/mo., Super Joey \$10/mo.



DISH Puts You and Your Family First

Ranked **#1 in Customer Satisfaction** by J.D. Power and our customers for the second year in a row.

DISH Network received the highest score in the Nation in the J.D. Power 2018-2019 U.S. Residential Television Service Provider Satisfaction Studies of customers' satisfaction with their current television provider. Visit jdpower.com/awards

- **FREE** HD for Life®
- **FREE** Standard Professional Installation

CALL TODAY

You could be watching DISH tomorrow!

866-722-3720

or visit your local Authorized Retailer

Offer for new and qualifying former customers only.

Important Terms and Conditions: Qualification: Advertised price requires credit qualification and eAutoPay. Upfront activation and/or receiver upgrade fees may apply based on credit qualification. **Offer ends 7/15/20. 2-year commitment:** Early termination fee of \$20/mo. remaining applies if you cancel early. **Included in 2-year price guarantee at \$59.99 advertised price:** America's Top 120 programming package, local channels, HD service fees, and Hopper Duo for 1 TV. **Available with 2-year price guarantee for additional cost:** Programming package upgrades (\$74.99 for AT120+, \$84.99 for AT200, \$94.99 for AT250), monthly fees for upgraded or additional receivers (\$5-\$7 per additional TV, receivers with additional functionality may be \$10-\$15). **NOT included in 2-year price guarantee or advertised price (and subject to change):** Taxes & surcharges, add-on programming (including premium channels), DISH Protect, and transactional fees. **Regional Sports:** RSN Surcharge of up to \$3/mo. applies to AT120+ and higher packages and varies based on location. **Other:** All packages, programming, features, and functionality and all prices and fees not included in price guarantee are subject to change without notice. After 6 mos., if selected you will be billed \$9.99/mo. for DISH Protect Silver unless you call to cancel. After 2 years, then-current everyday prices for all services apply. For business customers, additional monthly fees may apply. © 2019 DISH Network L.L.C. All rights reserved. #1 in Customer Service, Performance and Reliability, Cost of Service, Features and Functionality, Billing and Payment Experience, and Communications and Promotions. For J.D. Power 2019 award information, visit jdpower.com/awards.