

# B3300 Third Function Valve Kit

## #380-093A & #380-333A Installation Instructions



For B3300 Kubota Tractors with LA504 Loader

Manual No. 380-148M

### Before You Start



When you see this symbol, the subsequent instructions and warnings are serious - follow without exception. Your life and the lives of others depend on it!

#### California Proposition 65



**WARNING:** Cancer and reproductive harm.  
[www.P65Warnings.ca.gov](http://www.P65Warnings.ca.gov)

**IMPORTANT:** Before you begin, thoroughly read these instructions and check to be sure all parts are accounted for. Please retain these installation instructions for future reference and parts ordering information.

### General Information

Your B3300 Third Function Valve Kit has been designed specifically for the Kubota B3300 tractor series equipped with a Kubota LA504 front loader. These assembly instructions apply to the Third Function Valve Kit Accessories listed below:

- **380-093A: 3FVK PC B3300** ..... page 2
- **380-333A: 3FVK FF B3300** ..... page 2

### Further Assistance

Your Land Pride dealer wants you to be satisfied with your new B3300 Third Function Valve Kit. If for any reason you do not understand any part of this manual or are not satisfied with the service received, the following actions are suggested:

1. Discuss any problems you have with your Third Function Valve Kit with your dealership service personnel so they can address the problem.
2. If you are still not satisfied, seek out the owner or general manager of the dealership, explain the question/problem, and request assistance.
3. For further assistance write to:

**Land Pride Service Department**  
1525 East North Street

P.O. Box 5060  
Salina, Ks. 67402-5060

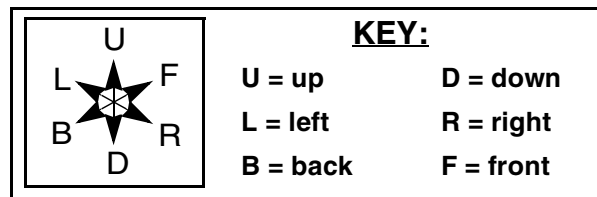
E-mail address  
[lp servicedept@landpride.com](mailto:lp servicedept@landpride.com)

### Assembly Instructions

A detailed listing of parts for your cab tractor's 3rd Function Valve Kit is provided on page 6 for kits using pioneer couplers, and page 8 for kits using flat faced couplers. Use the list that is for your specific Third Function Valve Kit as a checklist to inventory parts received. Please contact your local Land Pride dealer for any missing hardware.

#### Direction Reference

All directional references are made from the operator seat while facing the direction the machine will operate.



Directional Arrows Used in Illustrations

### Initial Preparations

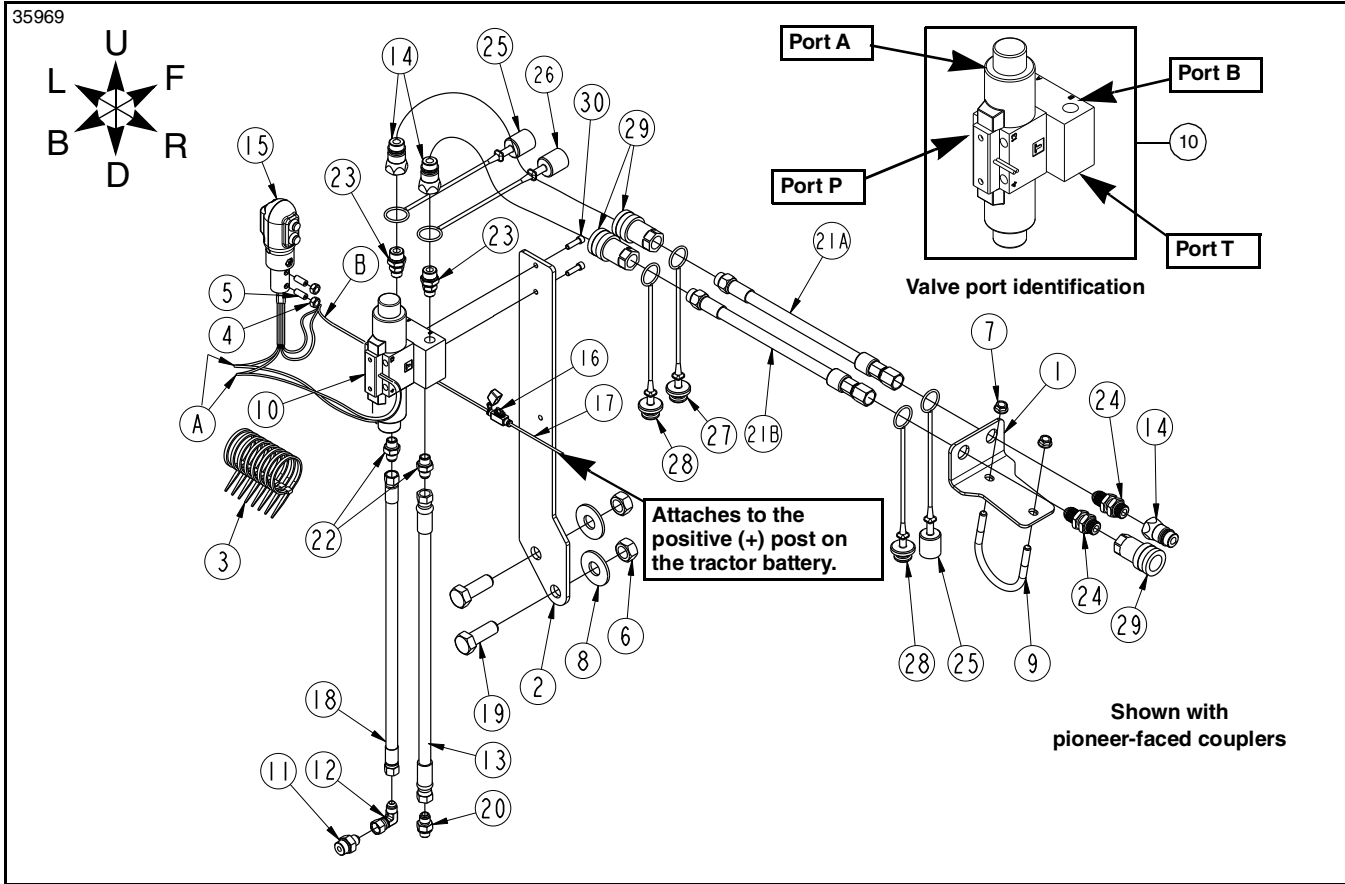


#### WARNING

*To avoid serious injury or death: Hydraulic fluid under high pressure can penetrate the skin and/or eyes causing a serious injury. Wear protective gloves and safety glasses or goggles when working with hydraulic systems.*

1. Reduce engine speed. Park tractor and attachment on solid, level ground.
2. Unhook the attachment from the loader arms, back away from attachment several feet, and lower loader arms until they are fully down.
3. Put tractor in park or set park brake, turn off engine, and remove ignition key to prevent unauthorized starting.
4. Relieve all hydraulic pressure to auxiliary hydraulic lines.
5. Wait for all components to come to a complete stop before leaving the operator's seat.
6. Use steps, grab-handles and anti-slip surfaces when stepping on and off the tractor.
7. As a safety precaution, disconnect the negative battery cable from battery terminal. Move cable away from terminal to avoid accidental contact.

35969

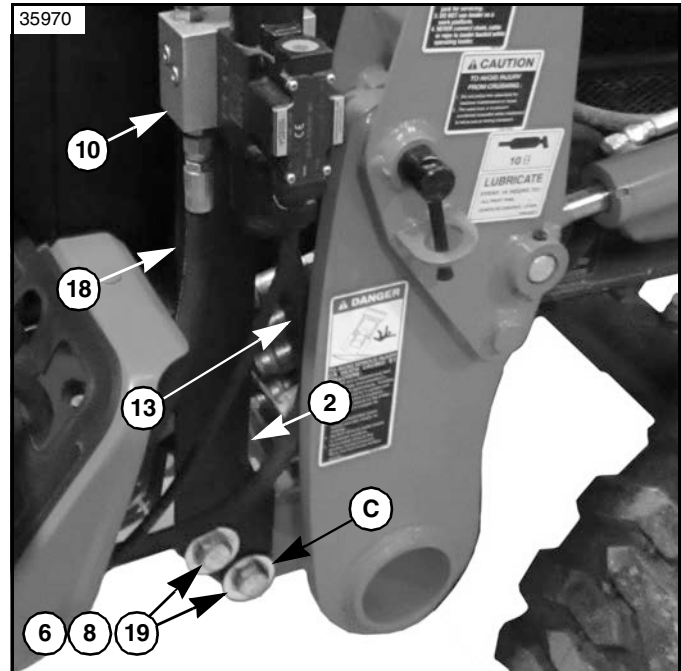


**B3300/LA504 Third Function Valve Kit for Kubota Cab Tractor**  
Figure 1

## Valve Mount & Valve Assembly

Refer to Figure 1 & Figure 2 on page 3:

1. Attach the valve mount plate (#2) using two existing holes in plate "C" on right-hand loader support tube with M18 X 2 1/2" GR8 bolts (#19), flat washers (#8), and nuts (#6). Tighten nuts to the correct torque.
2. Attach valve (#10) to the valve mount plate (#2) using 1/4" x 7/8" bolts (#30).
3. Attach 62" long hose (#13) to "T" port in the valve (#10) using adapter (#22).
4. Attach 48" long hose (#18) to "P" port in valve (#10) using adapter (#22).
5. Install adapter (#23) and black dust cap (#25) to "A" port on valve (#10). Attach quick coupler (#14) to adapter (#23).
6. Install adapter (#23) and green dust cap (#26) to "B" port on valve (#10). Attach quick coupler (#14) to adapter (#23).
7. Route hydraulic hoses (#13 & #18) under the tractor platform and back towards the loader valve.



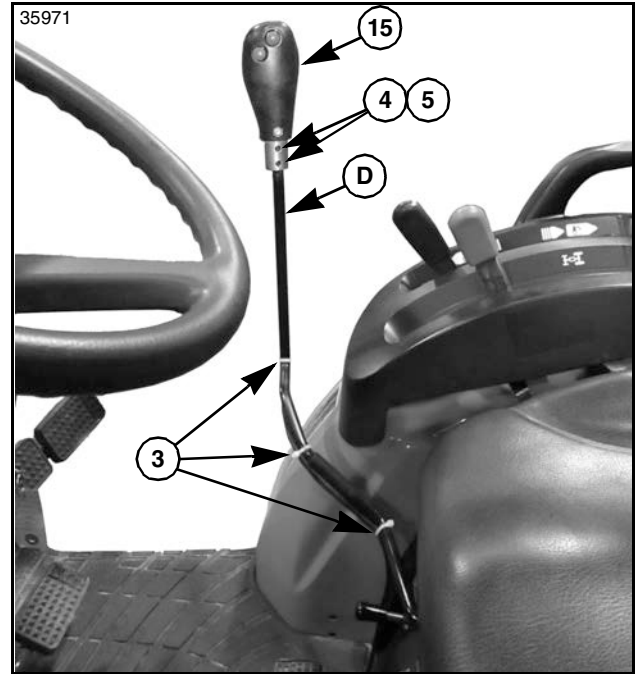
**Valve Location**  
Figure 2

## Connect to Power Beyond Ports

Refer to Figure 1 on page 2:

**IMPORTANT:** Land Pride recommends that your dealer connect hydraulic hoses (#13 & #18) to your tractor's power beyond ports. Improper hook-up could cause damage to your tractor.

1. Place chocks in front and back of tractor's left rear wheel.
2. Loosen lug nuts on right rear wheel. Do not remove lug nuts at this time.
3. Jack right rear wheel off the ground and place a jack stand under the right rear axle.
4. Lower right rear axle onto the jack stand. The rear wheel should still be slightly off the ground. Make sure jack stand is secure and will not slip out from under the tractor axle.
5. Remove lug nuts and right rear wheel.
6. Locate and remove the steel tube that is connected to the power beyond port.
7. Screw the larger hydraulic adapter (#11) to the power beyond port at the loader valve until tight.
8. Screw elbow (#12) to adapter (#11) until tight.
9. Connect hydraulic hose (#18) from port "P" to elbow (#12).
10. Locate port on right-hand side of tractor where steel tube in step 6 was removed. Screw the smaller hydraulic adapter (#20) to this port until tight.
11. Connect hydraulic hose (#13) from port "T" to adapter (#20).
12. Secure hoses (#13 & #18) to underside of tractor with cable ties (#3).
13. Replace right rear wheel and screw lug nuts on until snug.
14. Jack axle up and remove jack stand.
15. Lower tractor down and tighten rear wheel lug nuts in a crisscross pattern. Refer to tractor Operator's Manual for proper torque value.
16. Remove chocks.
17. Check tractor hydraulic fluid level. If low, add recommended hydraulic fluid. Refer to your tractor Operator's Manual for recommended hydraulic fluid and procedure for checking hydraulic fluid level.



Control Level Assembly  
Figure 3

## Control Lever Assembly

Refer to Figure 1 on page 2 & Figure 3:

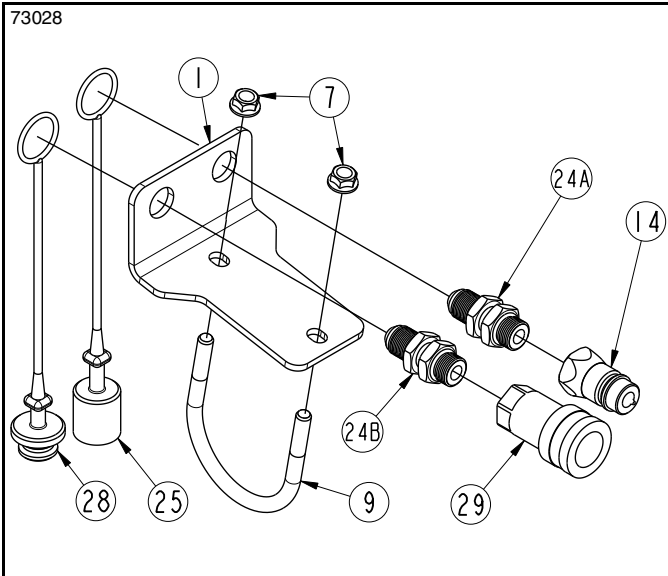
1. Remove existing knob (not shown) from end of control lever "D".
2. Install new control handle (#15) over end of control lever "D" with push buttons facing operator as shown.
3. Tighten set screws (#5) against control lever "D". Tighten jam nuts (#4) to secure set screws (#5).

Refer to Figure 1 on page 2:

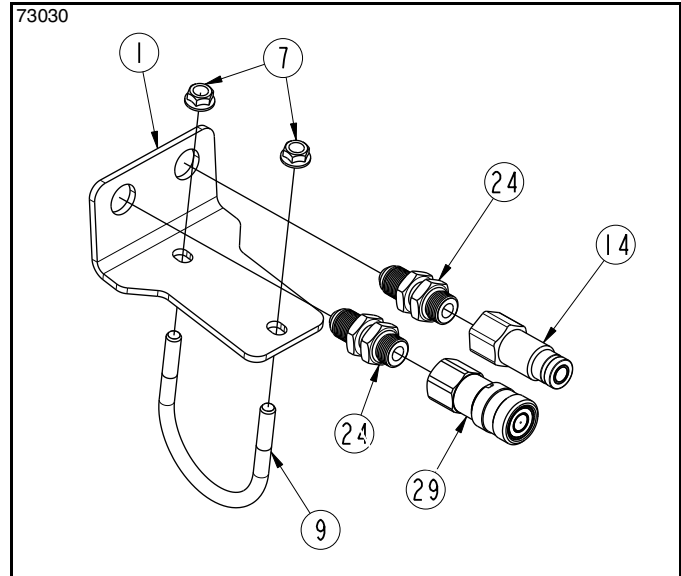
4. **Reference Connection "B":** Connect the two red wires from control lever (#15) to wire (#17) on one end of fuse holder (#16).
5. Connect wire on opposite end of fuse holder (#16) to the positive (+) post on the tractor battery.
6. **Reference Connections "A":** Connect the two black wires from control lever (#15) to the two wires from control valve (#10).

Refer to Figure 3:

7. Secure wiring with cable ties (#3) as needed.



**Bulkhead Mount with Pioneer Couplers**  
Figure 4



**Bulkhead Mount with Flat Faced Couplers**  
Figure 5

### Bulkhead Mount Assembly

Refer to Figure 1 on page 2, & Figure 4, & Figure 5:

1. Attach bulkhead fittings (#24) to bulkhead mount (#1). Tighten bulkhead locknuts to bulkhead mount (#1).

Refer to Figure 4:

2. When installing the kit with pioneer couplers, slide black dust cap (#25) on bulkhead fitting (24A), and green dust plug (#24B) onto bulkhead fitting (B).

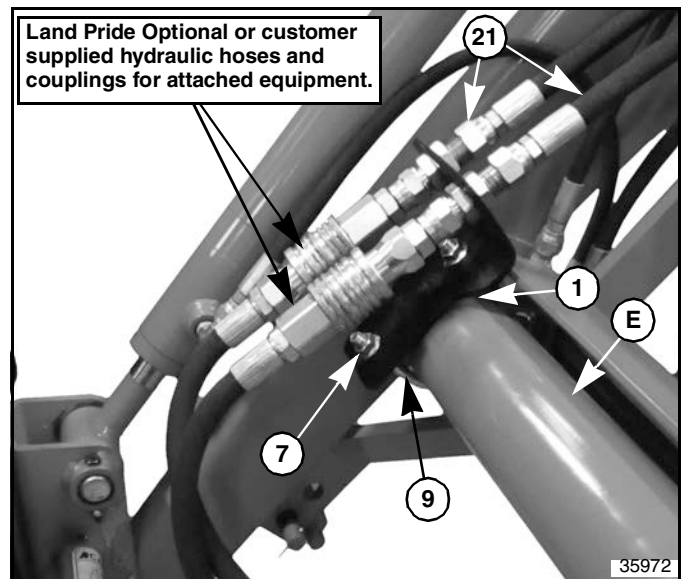
Refer to Figure 4 through Figure 6:

3. Attach female coupler (#29) to the bulkhead fitting (#24). Tighten and secure coupler to bulkhead fitting.
4. Attach male coupler (#14) to the bulkhead fitting (#24). Tighten and secure coupler to bulkhead fitting.

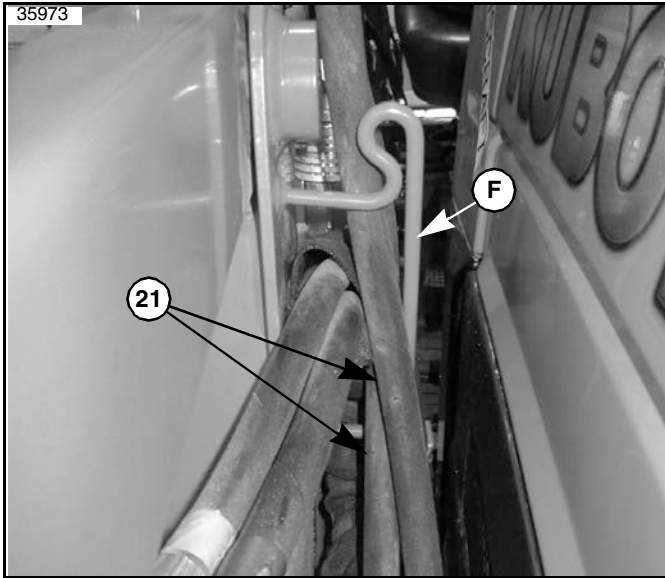
### Cross Beam Mount Assembly

Refer to Figure 4 through Figure 6:

1. Orient as shown and attach bulkhead mount (#1) to the right-hand side of loader crossbeam "E" with u-bolt (#9) and hex whiz nuts (#7). Tighten hex whiz nuts to the correct torque.
2. Connect hoses (#21) to the bulkhead fittings (#24).



**Cross Beam Mount Assembly**  
Figure 6



Loader Hose Loop Bracket  
Figure 7

## Hydraulic Hose Routing

Refer to Figure 1 on page 2, Figure 6 on page 4, & Figure 7:

1. Route hoses (#21) along loader arm and through loader hose loop bracket "F" to the third function valve (#10).
2. Slide black dust plug (#27) on free end of hose (#21A) and connect female coupler (#29) to the hose.
3. Slide green dust plug (#28) on free end of hose (#21B) and connect female coupler (#29) to the hose.
4. Connect hose (#21A) to quick coupler (#14) in "A" port, on valve block (#10).
5. Connect hose (#21B) to quick coupler (#14) in "B" port, on valve block (#10).
6. Secure hydraulic hoses (#21) as needed with cable ties (#3).

## Check Operating and Fluid Level

The Third Function Valve is now ready to be used with a multitude of attachments. Be sure to familiarize yourself with a complete understanding of how to operate the Third Function Valve Kit.

### DANGER

To avoid serious injury or death:

Do not allow bystanders to be near the attachment, loader arms, or tractor during operation. They can become entangled, pinched, or crushed by the equipment. Disconnect and lockout power source before making adjustments or servicing tractor and attachment.

1. Hook attachment to the tractor front loader and couple hydraulic hoses to the bulkhead couplers at the front of the loader.
2. Raise attachment off the ground and operate the third function hydraulics using the push-buttons on the newly installed control handle.
  - The top red button switch will actuate the attachment in one direction.
  - The bottom red button switch will actuate the attachment in the opposite direction.
3. **Refer to Figure 1 on page 2:** Switch hoses (#21) at couplers (#14) if the attachment's hydraulic cylinder(s) operate in the opposite direction intended.

**IMPORTANT:** Refer to your tractor Operator's Manual for recommended hydraulic fluid and procedure for checking hydraulic fluid level.

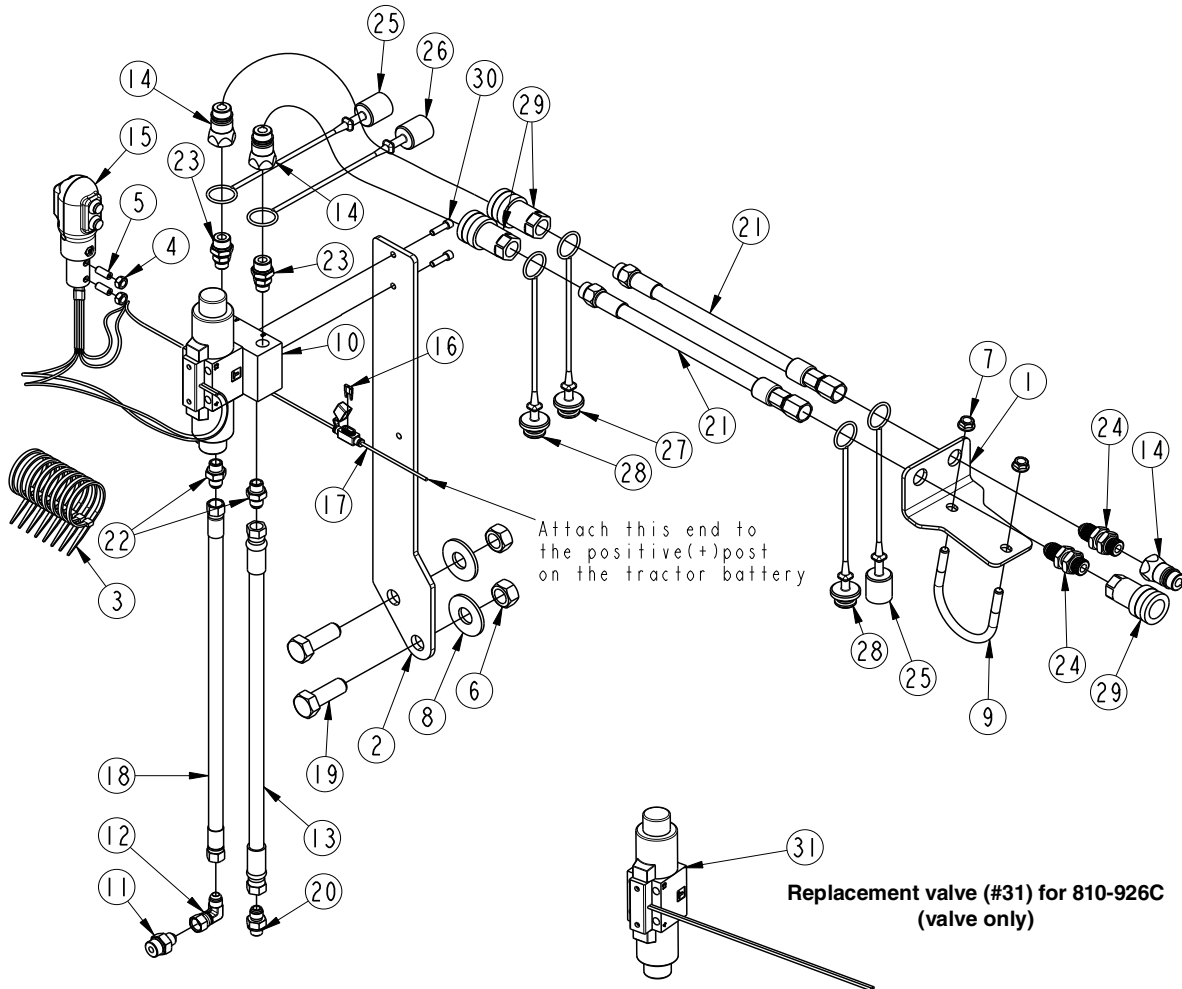
4. Once hoses and cylinder(s) are full of hydraulic fluid, check tractor hydraulic fluid level.
5. If low, add recommended hydraulic fluid.

## Relieve Hydraulic System Pressure

Be sure to lower the attachment to the ground and to relieve all hydraulic pressure to the attachment before leaving the tractor seat. Relieve hydraulic pressure to the attachment as follows:

1. Turn tractor switch key to off.
2. Press and hold both red buttons down on the control handle until all movement at the attachment stops.

74869



**Hydraulic Hose Identification Chart**

<b>851-088C - (#21)</b>		
<b>811-253C - (#13)</b>		
<b>841-563C - (#18)</b>		73021

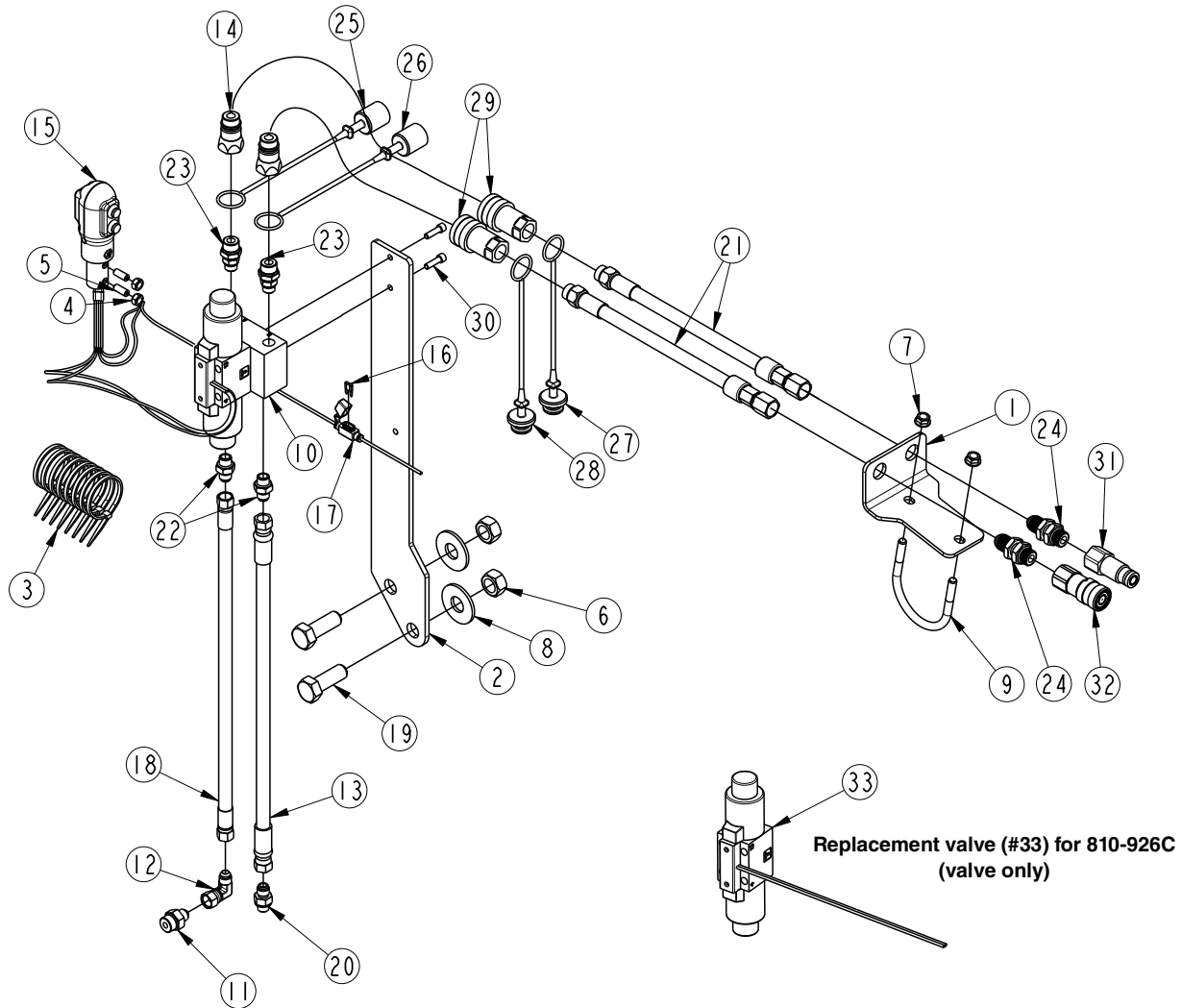
**Third Function Valve Kit for Cab Tractor  
Figure 8**



**Kit No. 380-093A                      B3300 THIRD FUNCTION VALVE KIT**  
**(Equipped with pioneer couplers)**

Item	Part No.	Description	Qty
1	380-164D	PLATE, BLKHD MOUNT.....	1
2	380-165D	PLATE, VALVE MOUNT.....	1
3	800-112C	CABLE TIE .19X7.25 1.75D 50LB.....	8
4	803-008C	NUT HEX 5/16-18 PLT.....	2
5	801-204C	SCREW SET SCKT HD 5/16-18X3/4.....	2
6	803-112C	NUT HEX M18X2.5.....	2
7	803-198C	NUT HEX WHIZ 3/8-16 PLT.....	2
8	804-024C	WASHER FLAT 3/4 USS PLT.....	2
9	806-261C	U-BOLT 3/8-16X3X3 5/8 RND.....	1
10	810-926C	VALVE, THIRD FUNCTION (Includes valve and manifold).....	1
11	811-133C	AD 9/16MJIC 3/4MORB.....	1
12	811-169C	EL 9/16MJIC 9/16FJIC.....	1
13	811-253C	HH3/8R2 062 9/16FJIC.....	1
14	811-394C	CP 3/4FORB MALE QD POPPET TYPE.....	3
15	380-165S	ASY, PUSH BUTTON CNTRL HNDL.....	1
16	833-495C	FUSE, 10 AMP MINI BLADE.....	1
17	833-650C	BLADE FUSE HOLDER, MINI.....	1
18	841-563C	HH3/8R2 048 9/16FJIC.....	1
19	842-216C	HHCS M18X2.5X50 GR8.8 FTHD.....	2
20	851-087C	AD 9/16MJIC 1/4MBSPP.....	1
21	851-088C	HH3/8R2 074 3/4FJIC 3/4MORB.....	2
22	811-170C	AD 9/16MORB 9/16MJIC.....	2
23	851-084C	AD 9/16MORB 3/4MORB.....	2
24	851-344C	AD 3/4MJIC 3/4MORB BLKHD W/ LN.....	2
25	861-539C	BLACK DUST CAP, 1/2" QD AG.....	2
26	861-540C	GREEN DUST CAP, 1/2" QD AG.....	1
27	861-541C	BLACK DUST PLUG, 1/2" QD AG.....	1
28	861-542C	GREEN DUST PLUG, 1/2" QD AG.....	2
29	811-870C	CP3/4FORB QD FEMALE (POPPET).....	3
30	802-418C	HSHCS 1/4-20X7/8.....	2
31	850-472C	HYDRO-TEK VALVE REPLACEMENT (includes valve without manifold).....	1

73033



Hydraulic Hose Identification Chart

<p><b>851-088C - (#21)</b></p>	<p>74.00</p>
<p><b>811-253C - (#13)</b></p>	<p>62.00</p>
<p><b>841-563C - (#18)</b></p>	<p>48.00</p> <p style="text-align: right;">73021</p>

Third Function Valve Kit for Cab Tractor  
Figure 9

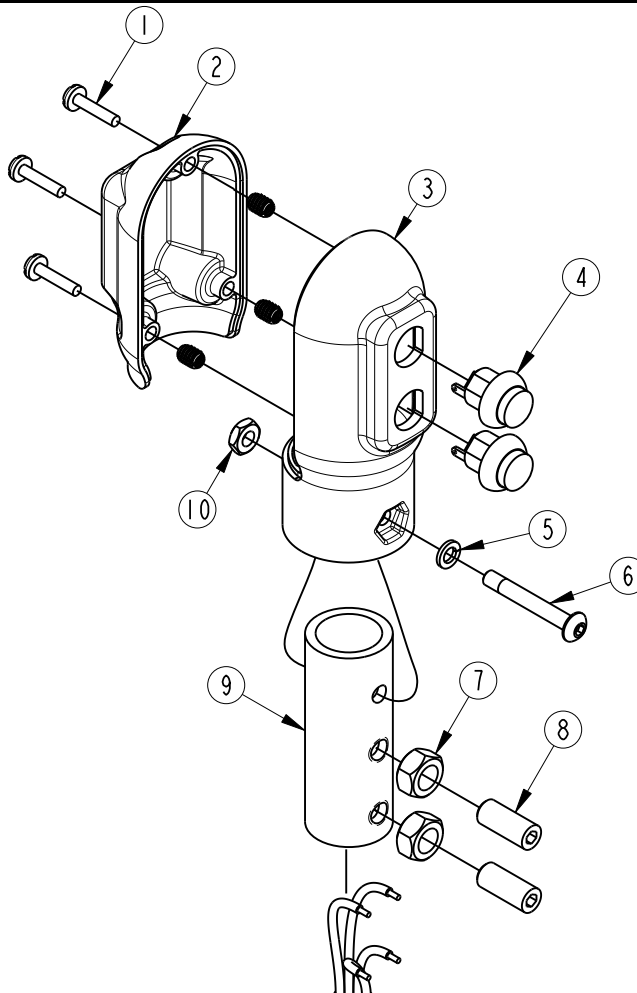




**Kit No. 380-333A                      B3300 THIRD FUNCTION VALVE KIT  
(Equipped with flat-faced couplers)**

<b>Item</b>	<b>Part No.</b>	<b>Description</b>	<b>Qty</b>
1	380-164D	PLATE, BLKHD MOUNT . . . . .	1
2	380-165D	PLATE, VALVE MOUNT . . . . .	1
3	800-112C	CABLE TIE .19X7.25 1.75D 50LB . . . . .	8
4	803-008C	NUT HEX 5/16-18 PLT . . . . .	2
5	801-204C	SCREW SET SCKT HD 5/16-18X3/4 . . . . .	2
6	803-112C	NUT HEX M18X2.5 . . . . .	2
7	803-198C	NUT HEX WHIZ 3/8-16 PLT . . . . .	2
8	804-024C	WASHER FLAT 3/4 USS PLT . . . . .	2
9	806-261C	U-BOLT 3/8-16X3X3 5/8 RND. . . . .	1
10	810-926C	VALVE, THIRD FUNCTION (Includes valve and manifold) . . . . .	1
11	811-133C	AD 9/16MJIC 3/4MORB . . . . .	1
12	811-169C	EL 9/16MJIC 9/16FJIC. . . . .	1
13	811-253C	HH3/8R2 062 9/16FJIC . . . . .	1
14	811-394C	CP 3/4FORB MALE QD POPPET TYPE. . . . .	3
15	380-165S	ASY, PUSH BUTTON CNTRL HNDL. . . . .	1
16	833-495C	FUSE, 10 AMP MINI BLADE. . . . .	1
17	833-650C	BLADE FUSE HOLDER, MINI . . . . .	1
18	841-563C	HH3/8R2 048 9/16FJIC . . . . .	1
19	842-216C	HHCS M18X2.5X50 GR8.8 FTHD. . . . .	2
20	851-087C	AD 9/16MJIC 1/4MBSPP . . . . .	1
21	851-088C	HH3/8R2 074 3/4FJIC 3/4MORB. . . . .	2
22	811-170C	AD 9/16MORB 9/16MJIC . . . . .	2
23	851-084C	AD 9/16MORB 3/4MORB . . . . .	2
24	851-344C	AD 3/4MJIC 3/4MORB BLKHD W/ LN. . . . .	2
25	861-539C	BLACK DUST CAP, 1/2" QD AG . . . . .	2
26	861-540C	GREEN DUST CAP, 1/2" QD AG. . . . .	1
27	861-541C	BLACK DUST PLUG, 1/2" QD AG. . . . .	1
28	861-542C	GREEN DUST PLUG, 1/2" QD AG . . . . .	2
29	811-870C	CP3/4FORB QD FEMALE (POPPET). . . . .	2
30	802-418C	HSHCS 1/4-20X7/8. . . . .	3
31	841-099C	CP 3/4FORB QD FLATFACE . . . . .	1
32	861-543C	CP 3/4FORB QD FML FLATFACE . . . . .	1
33	850-472C	HYDRO-TEK VALVE REPLACEMENT (Includes valve without manifold) . . . . .	1

73015



Control Handle  
Figure 10

**380-165S Push Button Control Handle**

Item	Part No.	Description	Qty
1	801-091C	CRPHMS 6-32X5/8 SS	3
2	837-053C	COVER, PUSH BUTTON CNTRL HNDL	1
3	837-054C	BASE, PUSH BUTTON CNTRL HNDL	1
4	833-739C	SWITCH, P9 PB NO SPST MOM RED	2
5	804-054C	WASHER LOCK #10	1
6	801-250C	HSBHCS #10-32X1 3/8	1
7	803-008C	NUT HEX 5/16-18 PLT	2
8	801-204C	SCREW SET SCKT HD 5/16-18X3/4	2
9	380-225D	MOUNT TUBE, CONTROL STICK	1
10	803-269C	NUT HEX 10-32 PLT	1

---

This page left blank intentionally.



Corporate Office: P.O. Box 5060  
Salina, Kansas 67402-5060 USA  
[www.landpride.com](http://www.landpride.com)

---