

B82 Southern Brooklyn Select Bus Service

May 9, 2017



Overview

- **Project Background**
- **B82 SBS Proposed Designs**
- **Next Steps**
- **Questions and discussion**

B82 Project Background

The Southern Brooklyn B82 corridor was identified as a potential candidate for Select Bus Service in the 2009 Bus Rapid Transit Phase II Study.

- Serves 32,000 daily riders on B82 Limited and Local
- Heavily used route with slow trips
- Important east-west transit connection across Southern Brooklyn
- Connects to **D N F B Q L** subway lines and 21 bus routes, including B44 Nostrand SBS and B46 Utica SBS
- Serves areas far from the subway



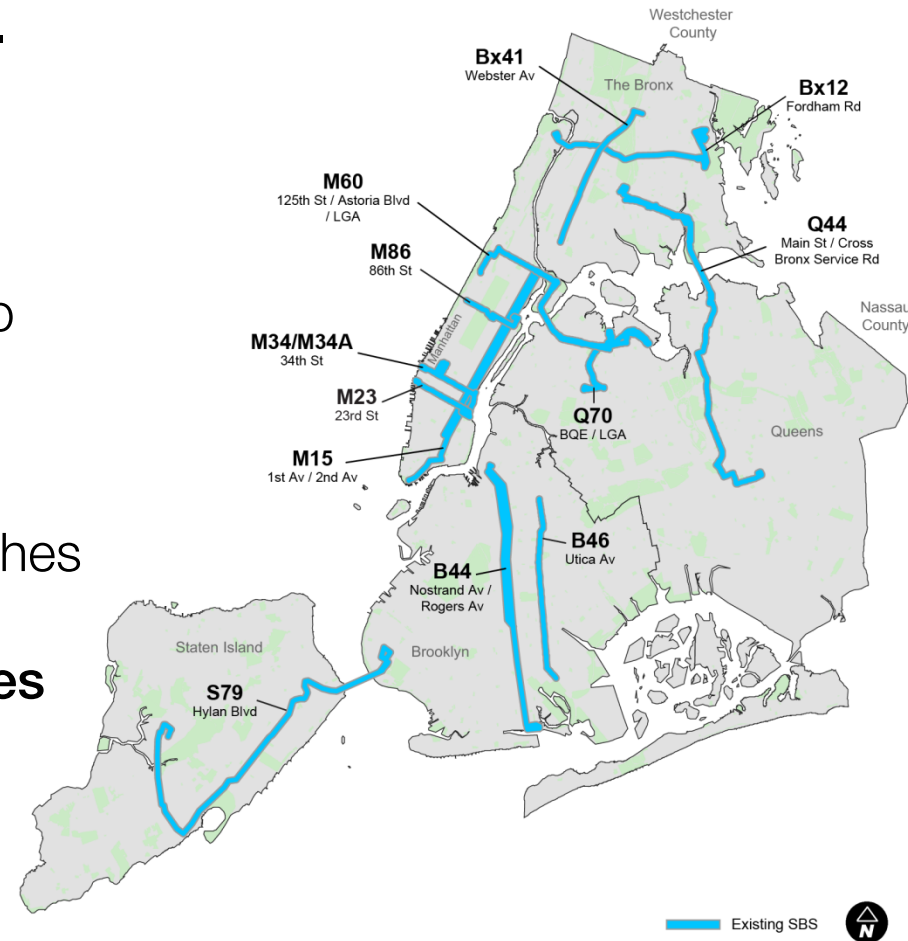
Select Bus Service in New York City

Select Bus Service (SBS) is New York City's brand name for Bus Rapid Transit: an improved bus service that offers fast, frequent, and reliable service on high-ridership bus routes.

SBS has brought:

- 10-30% faster bus speeds
- About 10% increase in ridership
- More reliable service
- Customer satisfaction of 95%
- Safer streets / reduction in crashes

There are 12 Select Bus Service routes in operation serving all 5 boroughs.



Select Bus Service Features

Dedicated Bus Lanes



Signal Priority for Buses



- **Faster** bus rides
- **Reduced traffic conflicts** between buses and traffic
- **More reliable** bus service
- Buses spend **less time stopped** at red lights

Off-Board Fare Collection



All-Door Boarding



- **Quicker** bus boarding
- Buses spend **less time waiting** at bus stops

Select Bus Service Features

Improved Station Amenities



Real-Time Passenger Information



- **More attractive, appealing** bus stops
- **Better trip information** for riders to **know when** the bus is coming
- **More comfortable wait** for the bus

Pedestrian Safety Improvements



- **Better visibility** for pedestrians, bus operators, and drivers
- **Clearer, shorter** pedestrian crossings

Community Engagement

- **Borough Hall Kickoff Meeting**
(June 2015)
- **Online Feedback Portal Launches**
(August 2015)
 - Over 130 location specific comments to date
 - Site is still live at nycdotfeedbackportals.nyc
- **On-Street Outreach**
(August 2015 – August 2016)
 - Over **1500** passengers reached at **12** Bus Stops
 - **3000** project information cards distributed
- **Stakeholder Meetings**
(June 2015 – present)
 - **27** meetings to date across the corridor
- **Community Board Meetings**
(January 2016 – Present)



Community Engagement

2015

- Elected Officials Briefing Kickoff
- Kings Highway BID Meeting
- On-Street Outreach:
 - Pennsylvania Ave
 - Kings Highway at E.15th St
 - Ralph Ave at Flatlands Ave
 - Bay Parkway at 86th St
 - Glenwood Rd at Rockaway Parkway
 - Flatlands Ave at Rockaway Parkway
 - Bay Parkway at 86th St #2
 - Kings Highway at W. 7th St
 - Kings Hwy at McDonald Ave
 - Kings Hwy at Ocean Ave
 - Kings Hwy at E. 15th St #2
- Brooklyn Borough Service Cabinet Presentation
- Kings Highway BID Walkthrough

Canarsie outreach

2016

- CB18 Full Board Presentation
- Kings Highway BID Monthly Meeting Presentation
- NYCHA Breukelen Houses TA President Briefing
- Holy Family RC Church
- Starrett City TA President Briefing
- NYCHA Breukelen Houses TA Meeting
- Brooklyn Auditory Oral School Consultation
- Starrett City TA Meeting
- CB18 Leadership Meeting
- CM Williams Field Meeting
- New York Community Hospital Walkthrough
- St Matthew's Church Briefing
- Canarsie Full Gospel Briefing
- Christian Cultural Center Briefing
- Mt. Sinai Beth Israel Walkthrough

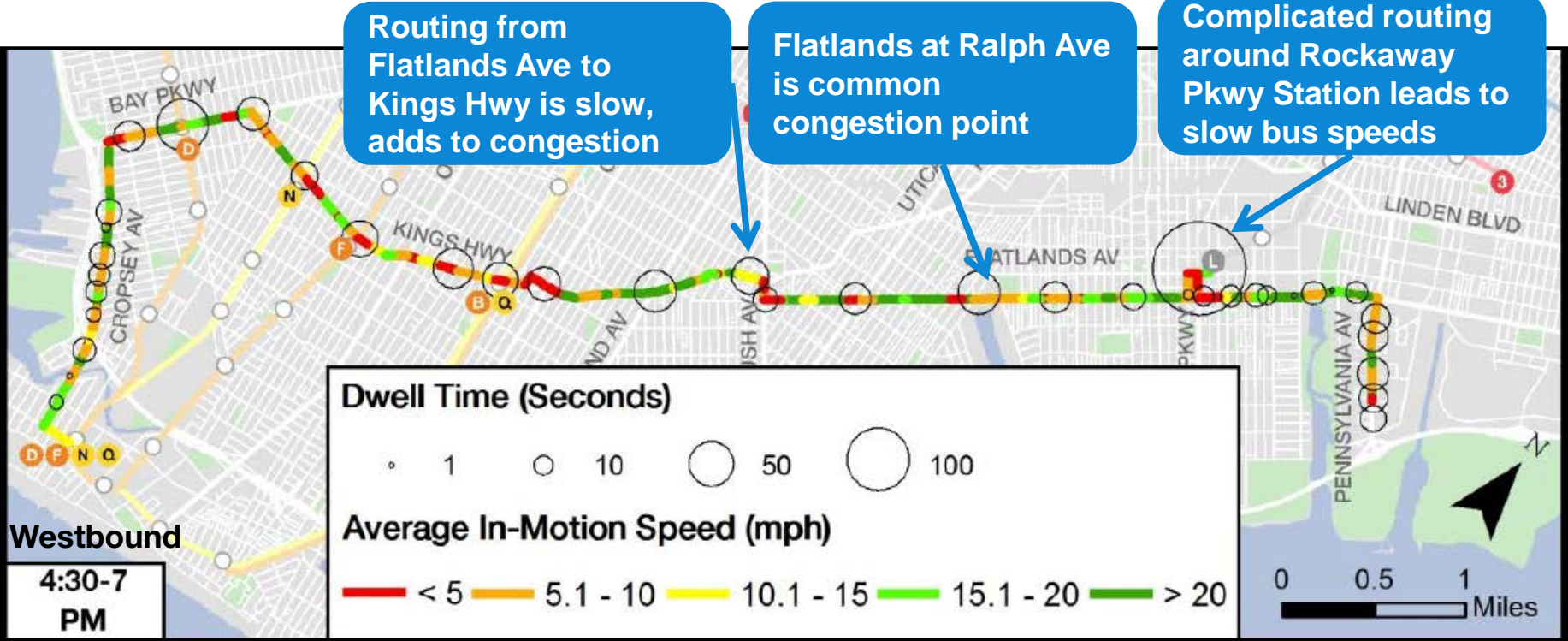
2016 *continued*

- Stakeholder meeting with Kings Hwy Beautification Association, Edith and Carl Marks Center
- Magen David Yeshiva Discussion
- Christian Cultural Center Traffic Observation
- Kings Hwy @ Fraser Square Constituent Walkthrough

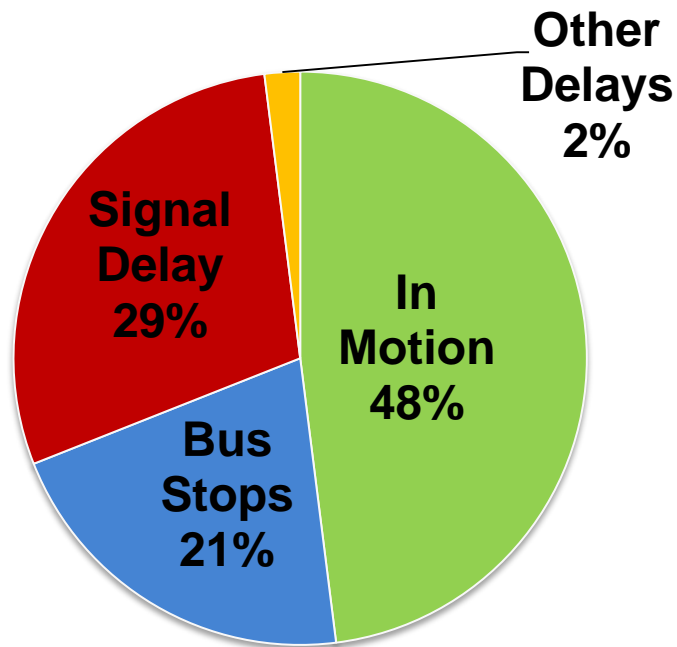
2017

- Library Outreach
 - Canarsie Branch
 - Highlawn Branch
 - Kings Highway Branch
 - Highlawn Branch #2
- Senior Centers Outreach
 - Vandalia Neighborhood
 - Abe Stark Center
 - Midwood Neighborhood Center
 - Ocean Parkway Neighborhood Center
- CB 5 Transportation Committee
- CB 11 Transportation Committee

Existing B82 Bus Speeds



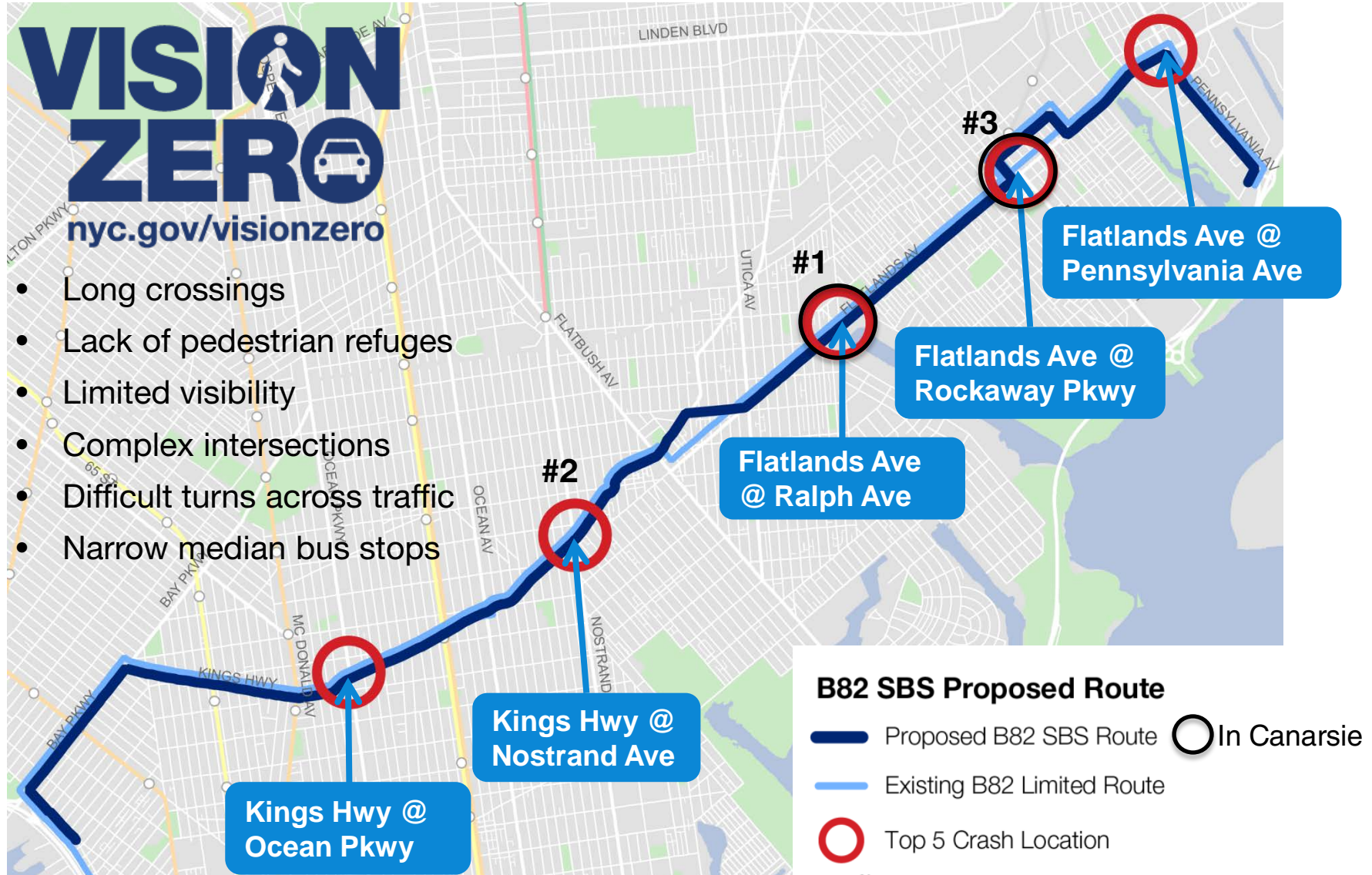
B82 Transit Issues



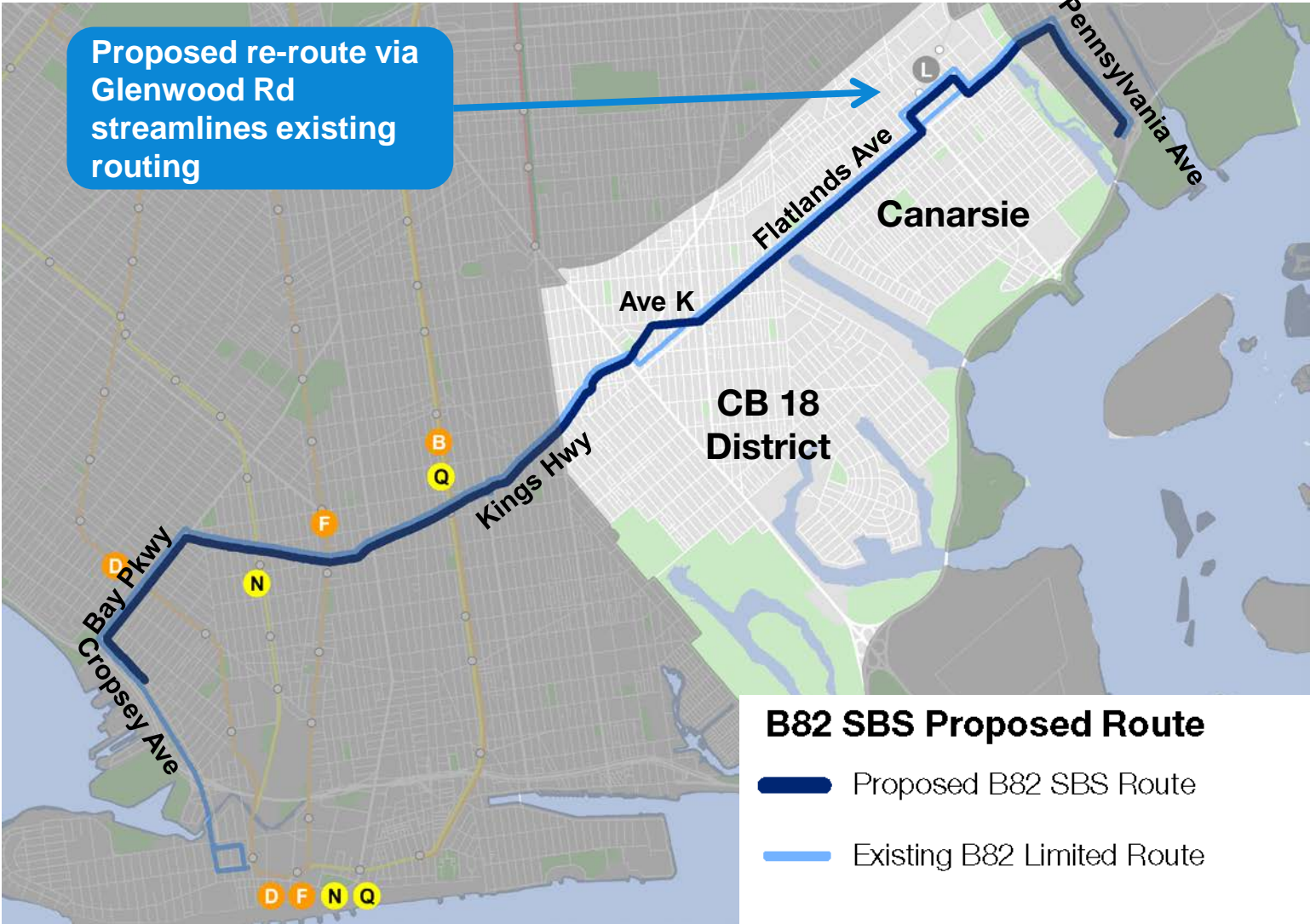
- Over 50% of trip spent delayed, crawling, or at bus stop
- Customers wait in long lines to pay on board the bus
- Bus stops lack amenities, not ADA accessible



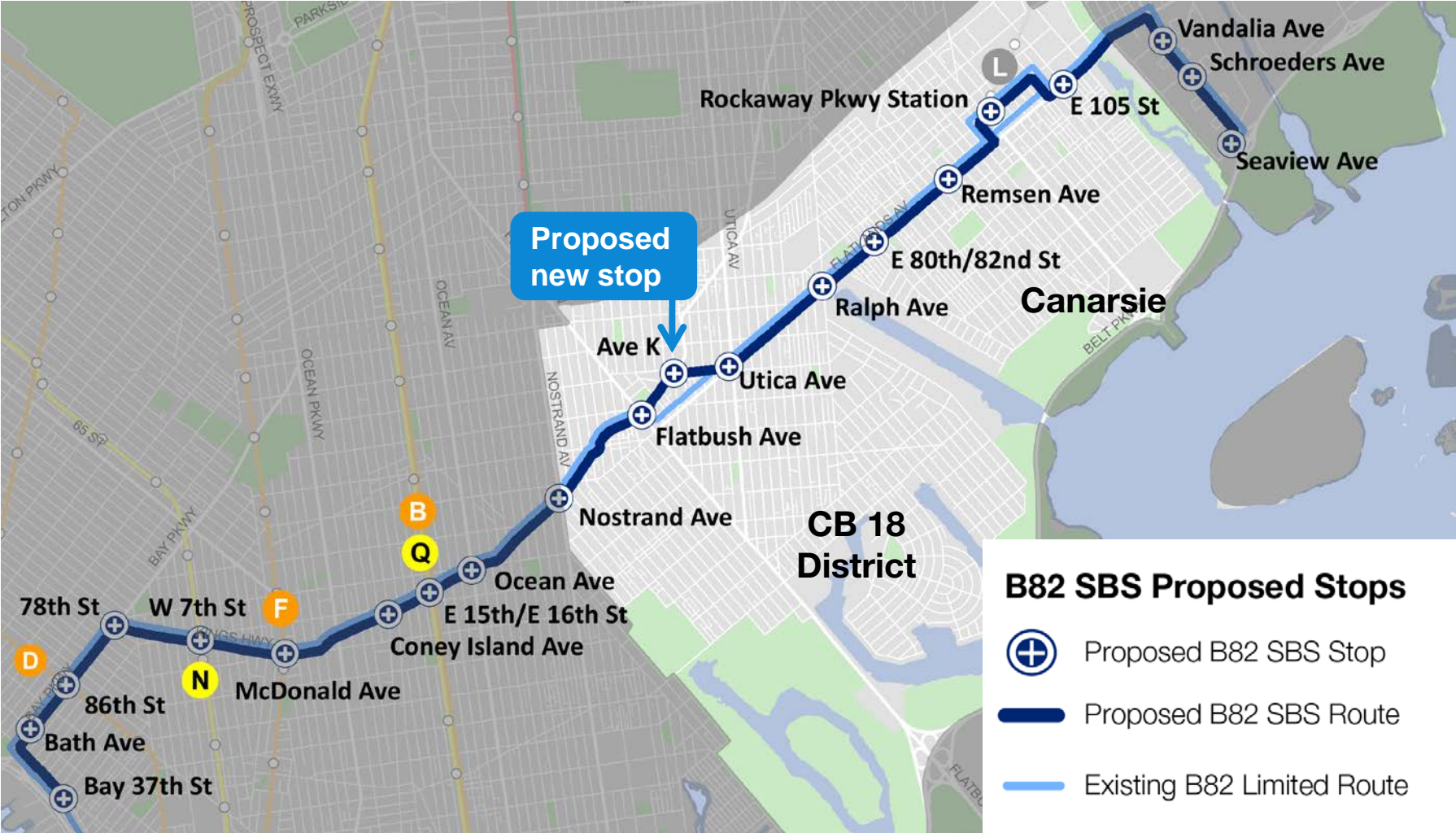
B82 Safety Issues



B82 Route Changes

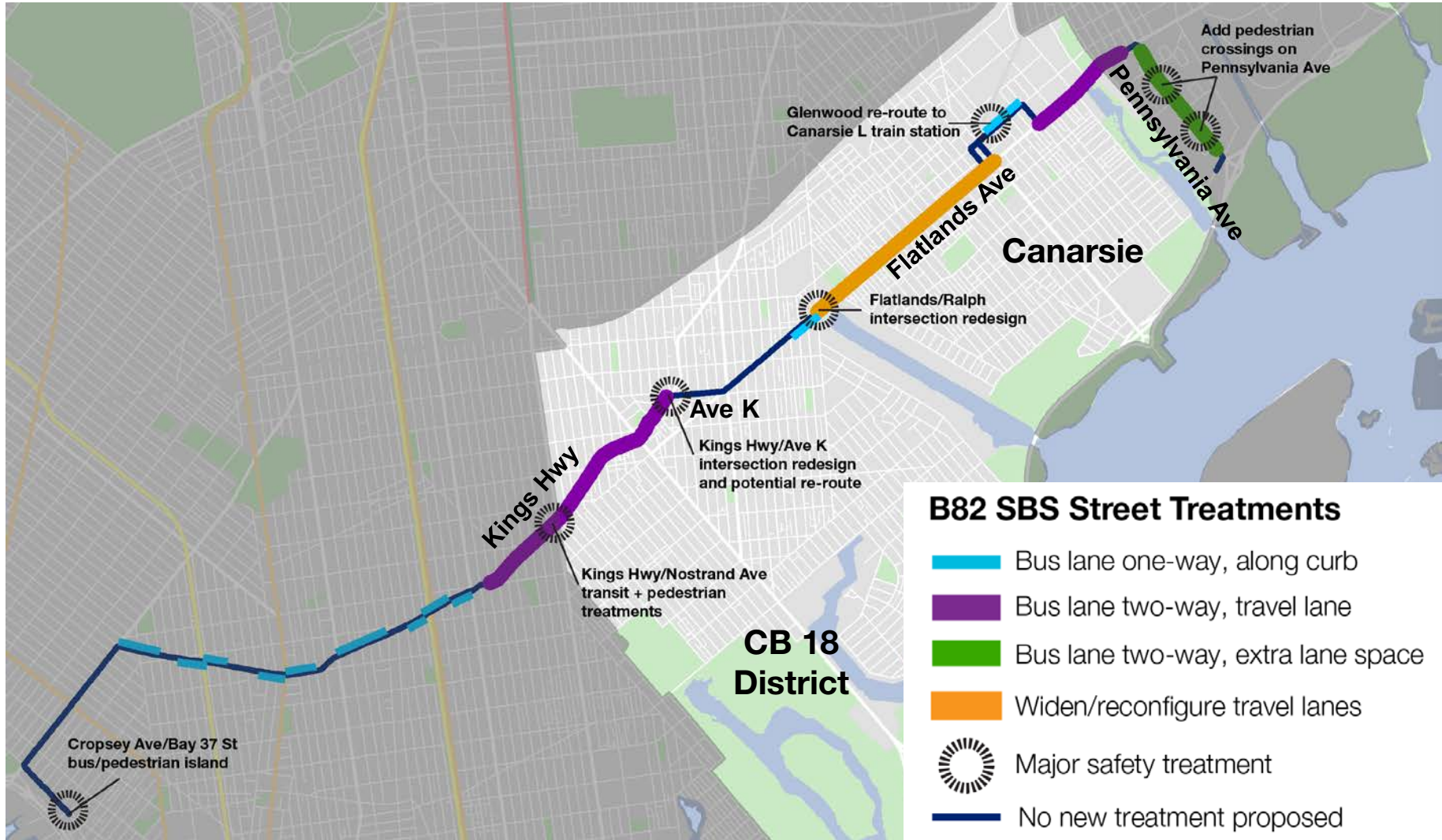


B82 SBS Stops

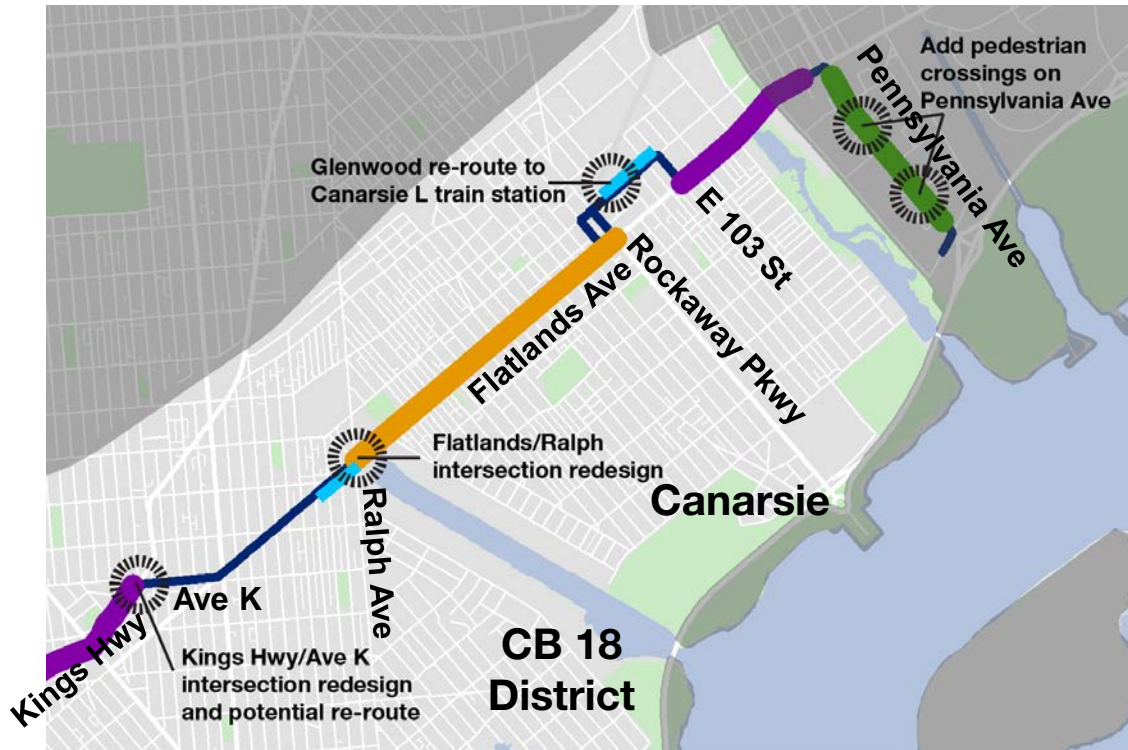


B82 SBS Proposed Designs







Proposed Street Treatments



District Treatments



B82 SBS Street Treatments

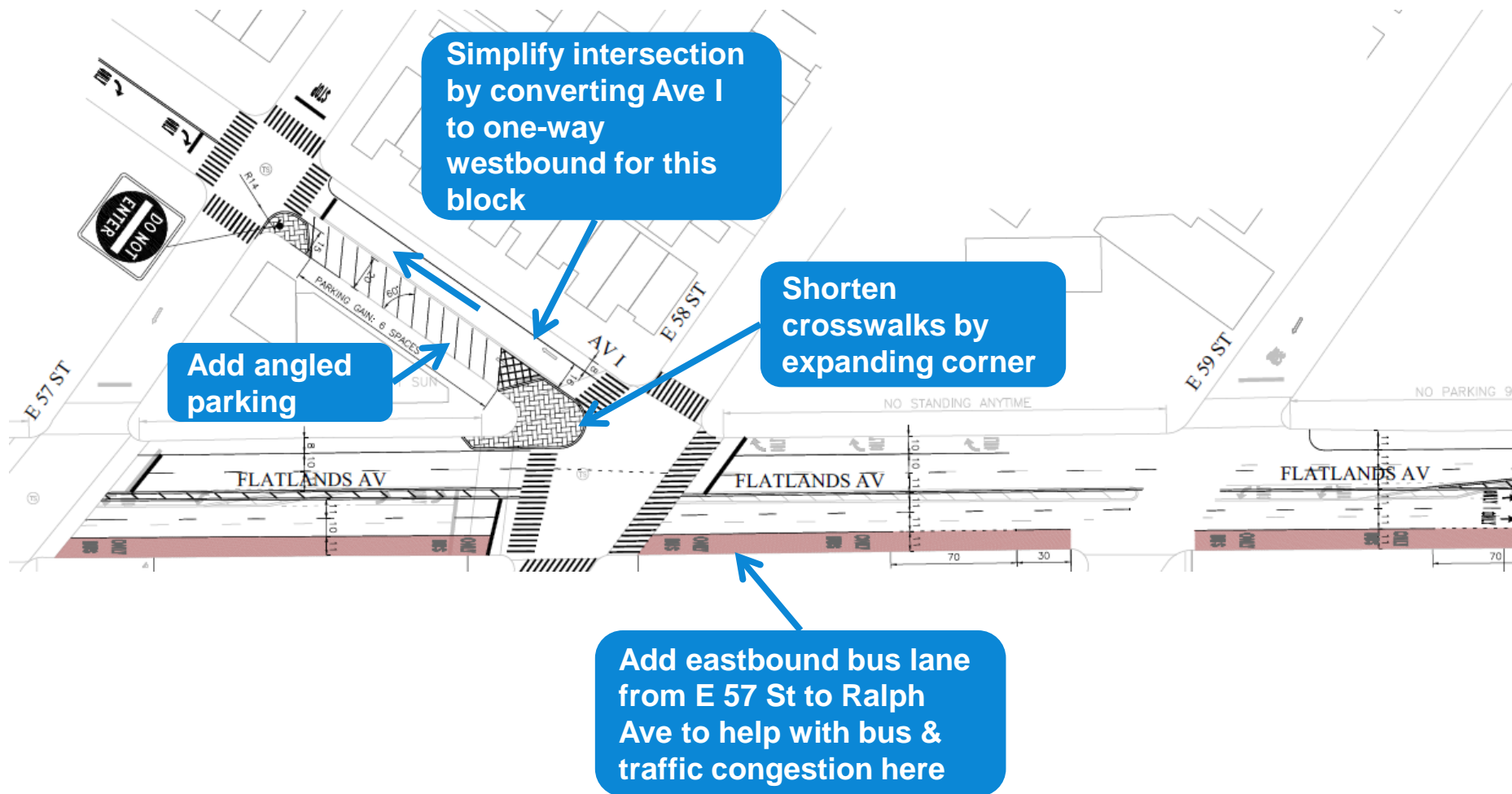
-  Bus lane one-way, along curb
-  Bus lane two-way, travel lane
-  Bus lane two-way, extra lane space
-  Widen/reconfigure travel lanes
-  Major safety treatment
-  No new treatment proposed

- Key design pieces:
 - Flatlands/Ralph intersection redesign
 - Flatlands Ave from E 80 St to Rockaway Pkwy
 - Glenwood Rd from Rockaway Pkwy to E 103 St
 - Flatlands Ave from E 103 St to Louisiana Ave

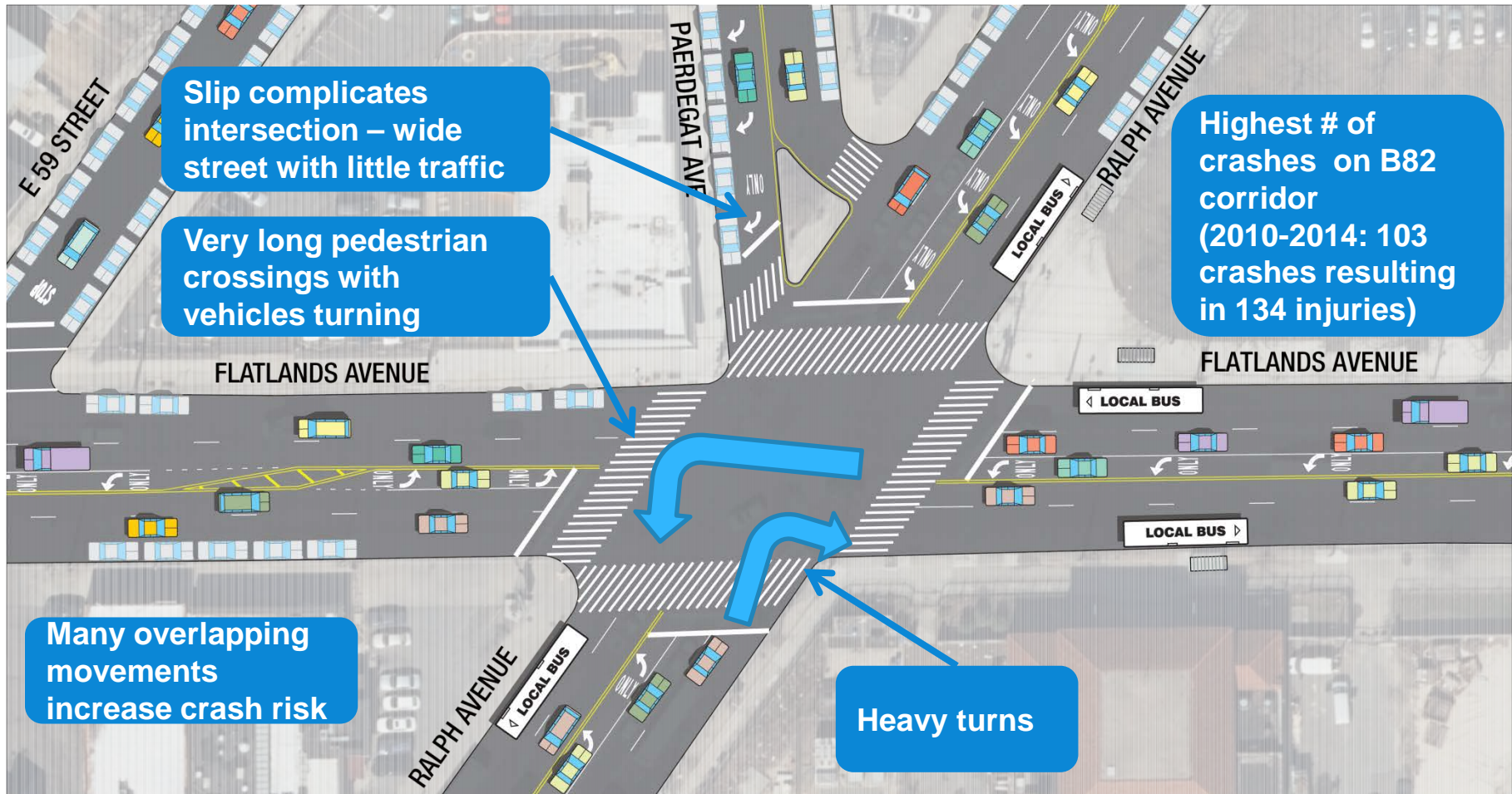
Existing: Flatlands Ave (Ave I to Ralph Ave)



Proposed: Flatlands Ave at Ave I



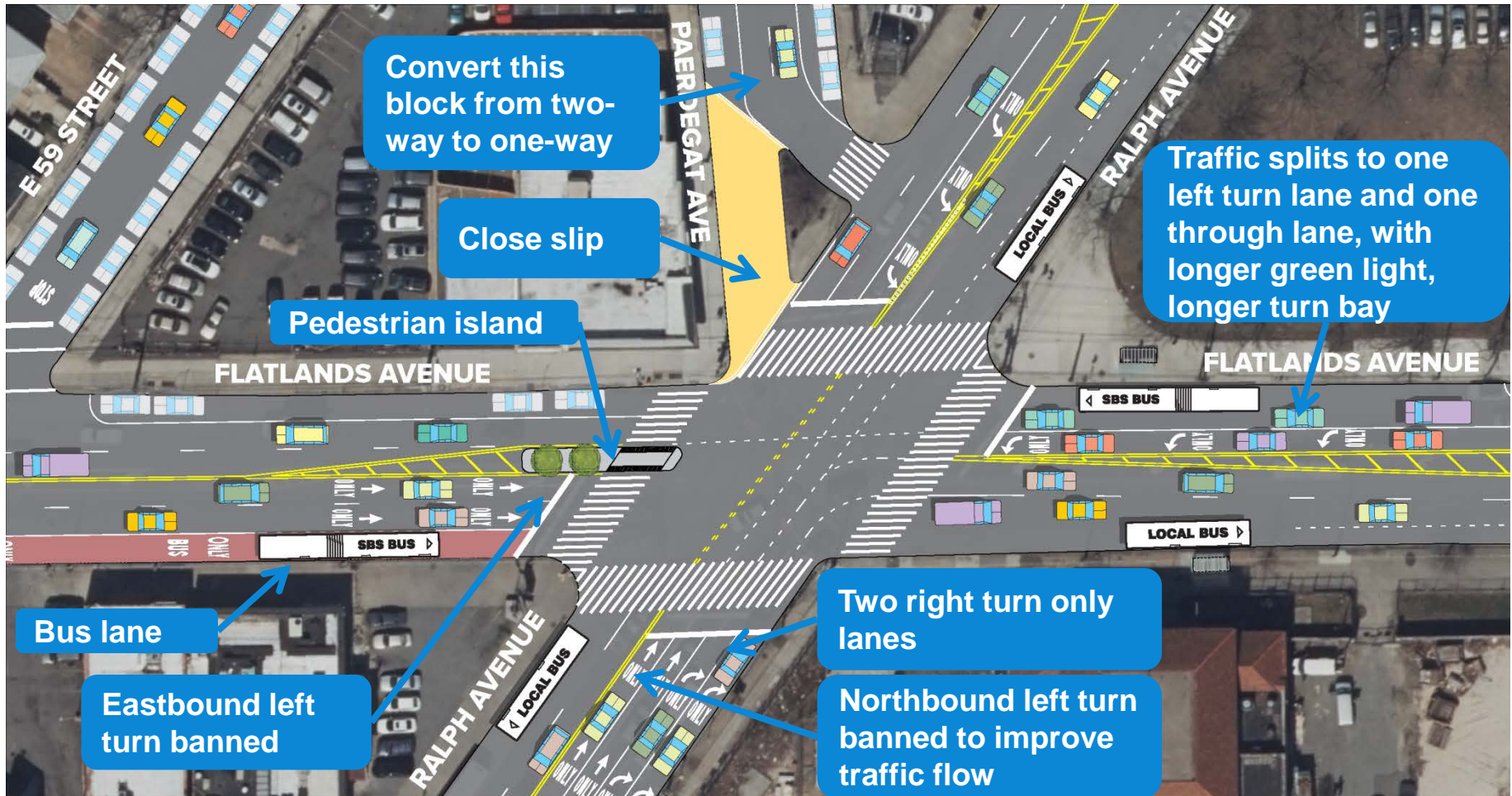
Existing: Flatlands Ave at Ralph Ave



0 20 40 80 feet



Proposed: Flatlands Ave at Ralph Ave



- + signal timing changes for improved safety, traffic flow
- + better synchronization of traffic lights along Flatlands

Proposed: Flatlands Ave at Ralph Ave

Purple = Proposed banned turns

Blue = Alternate routes to make turns



Existing: Flatlands Ave (E 80 St to Rockaway Pkwy)

- Traffic includes **high volume of buses and trucks**
- **Narrow travel lanes**, especially for larger vehicles
- **Bus stops not wide enough** to fully accommodate buses without partially blocking travel lane
- **Small left turn bays** do not provide enough space for left turning vehicles, overlap with adjacent lanes

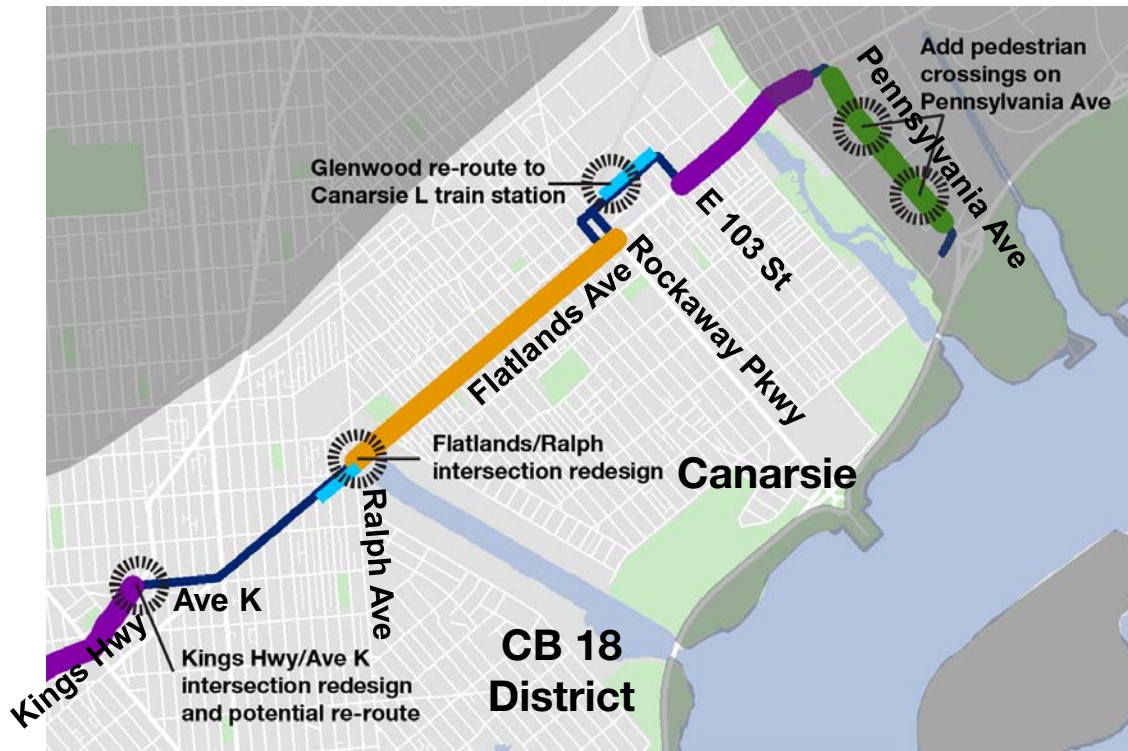


Proposed: Flatlands Ave (E 80 St to Rockaway Pkwy)







- Widen travel lanes, bus stops, parking lanes to reduce lane conflicts
- Remove small, narrow, lightly used left turn bays along Flatlands Ave
- Keep turn bays at major intersections (E 80 St, Remsen, Rockaway Pkwy)



District Treatments



B82 SBS Street Treatments

-  Bus lane one-way, along curb
-  Bus lane two-way, travel lane
-  Bus lane two-way, extra lane space
-  Widen/reconfigure travel lanes
-  Major safety treatment
-  No new treatment proposed

- Key design pieces:
 - Flatlands/Ralph intersection redesign
 - Flatlands Ave from E 80 St to Rockaway Pkwy
 - Glenwood Rd from Rockaway Pkwy to E 103 St
 - Flatlands Ave from E 103 St to Louisiana Ave

B82 routing to Canarsie-Rockaway Pkwy

- Westbound loop confusing and time consuming for bus customers
 - Can take up to 10 minutes to return to Flatlands Ave
- Westbound and eastbound routing does not match



B82 routing to Canarsie-Rockaway Pkwy

- Propose re-routing westbound buses via Glenwood Rd
 - Streamlines routing, removes unnecessary distance & turns
 - More customer-friendly routing by matching both directions



Existing: Glenwood Rd (Rockaway Pkwy to E 103 St)

- Land uses along north side:
 - Auto shops with garages & parking lots (2)
 - MTA property with parking lot
 - Residences (3 with driveways, 5 without)
 - Off-street parking area
- Much of parking on north curb taken up by adjacent auto/rental shops that store trucks and vans in the street
 - 20-40% of spaces open at any given time

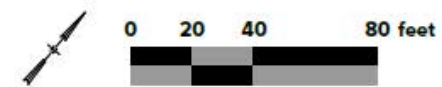


Existing: Glenwood Rd (Rockaway Pkwy to E 103 St)

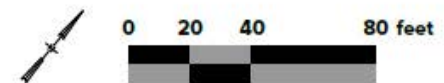
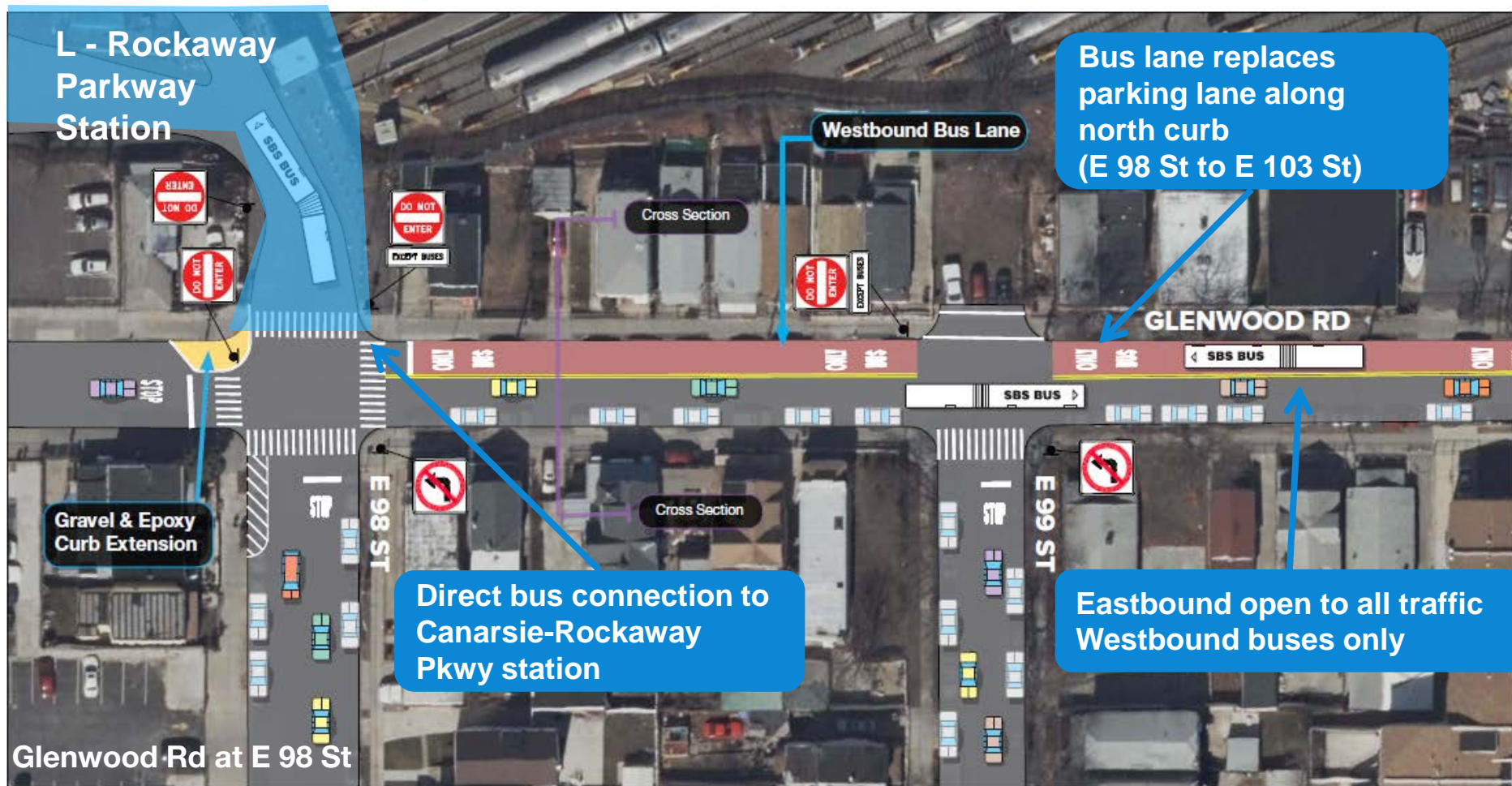
L - Rockaway Parkway Station



Existing one-way on Glenwood only serves eastbound buses



Proposed: Glenwood Rd (Rockaway Pkwy to E 103 St)



Existing: Glenwood Rd (Rockaway Pkwy to E 103 St)



Proposed: Glenwood Rd (Rockaway Pkwy to E 103 St)

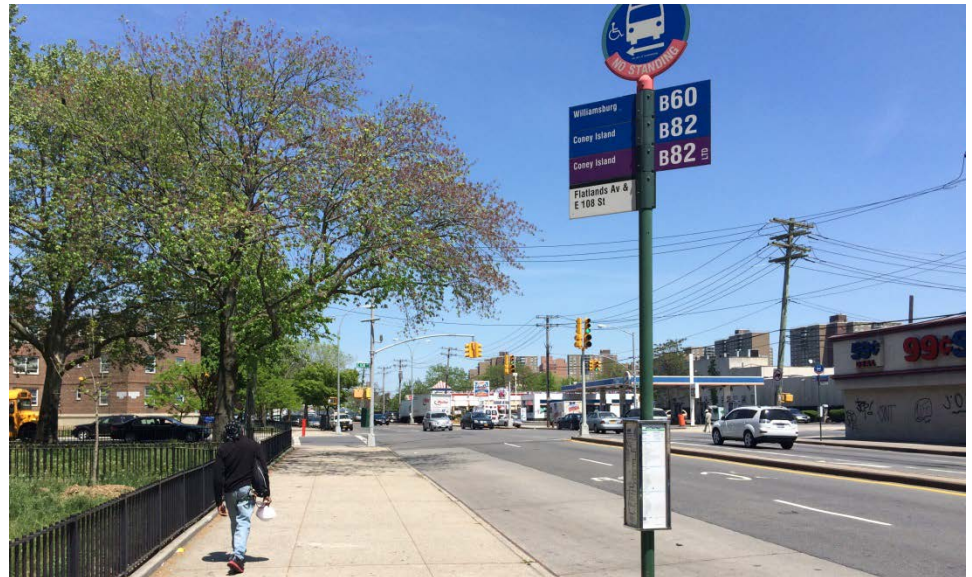


Glenwood Rd at E 98 St

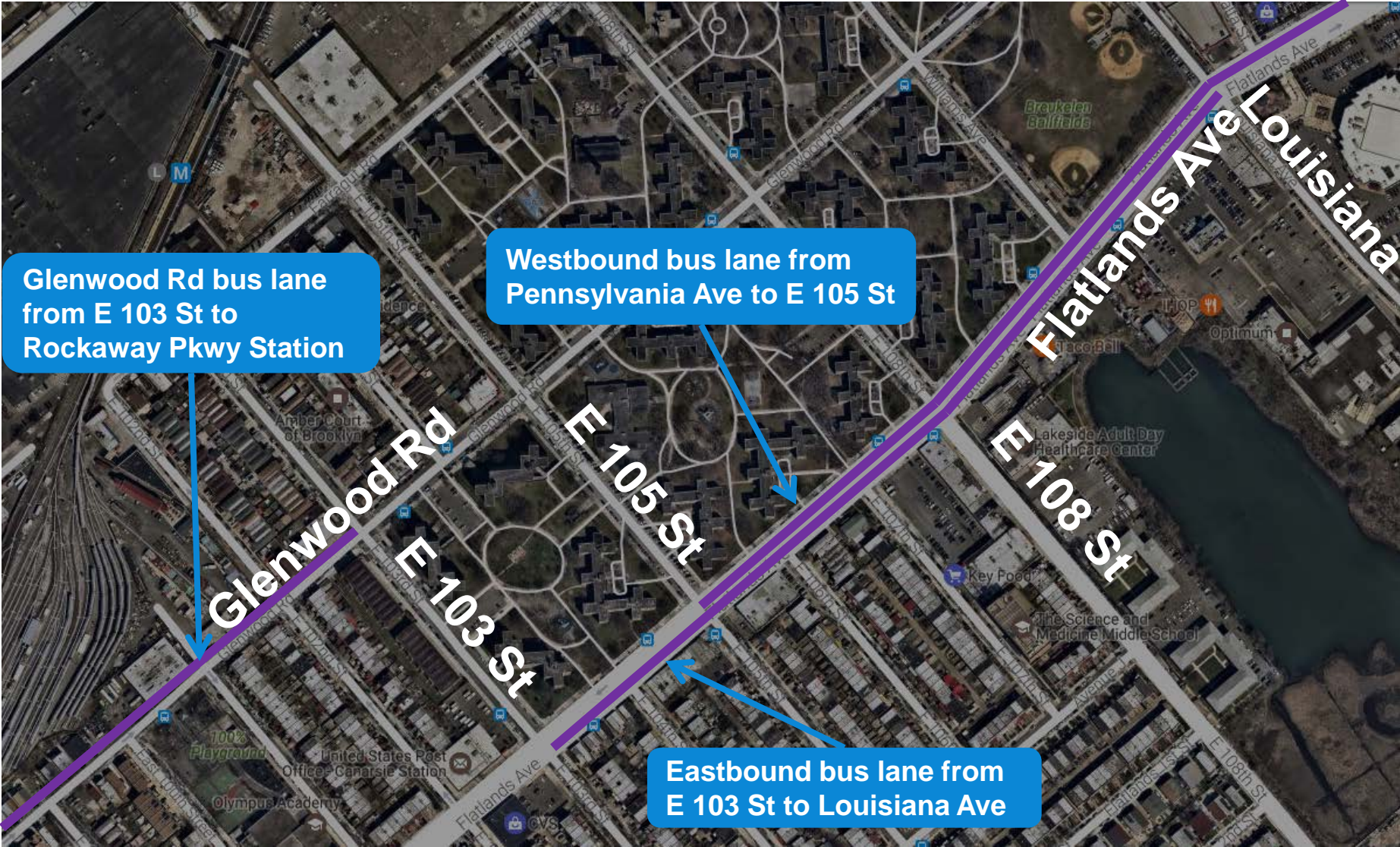
STOP L - Rockaway Parkway Station Entrance

Existing: Flatlands Ave (E 103 St to Pennsylvania Ave)

- Wider portion of Flatlands with concrete medians
- 3 city bus routes and 1 express bus route use this portion of Flatlands Ave
- Transit connection from Pennsylvania Ave/Starrett City to **L** Canarsie-Rockaway Pkwy station



Proposed: Flatlands Ave (E 103 St to Pennsylvania Ave)



Proposed: Flatlands Ave (E 103 St to Pennsylvania Ave)



Example of offset bus lanes: Bx41
Webster Ave SBS, The Bronx

Next Steps

Spring 2017

- Present draft plan to community boards and elected officials
- Continue stakeholder outreach

Summer 2017

- Update street design based on community feedback
- Begin implementation for critical safety and transit accessibility locations of project: Kings Hwy at Nostrand, Kings Hwy at Flatbush, Flatlands Ave at Ralph Ave

Fall 2017

- Present final plan to community boards and elected officials
- Continue stakeholder outreach

2018

- Implement project street designs, SBS stop amenities
- Launch B82 Southern Brooklyn Select Bus Service

Thank You!

- Questions?
- We appreciate your input! You can provide it at your convenience online:
 - www.nyc.gov/brt or
 - nycdotfeedbackportals.nyc/south-brooklyn-sbs
- To invite us to community events or give other feedback, please email us at **brt@dot.nyc.gov**

Questions and Discussion

