



BabyWare v0.X

Getting Started

P  **R**  **D O X**[®]
S E C U R I T Y S Y S T E M S

Table Of Contents

Introduction	2
Setting up the Imperial System	3
Step 1: Set up all hardware	3
Step 2: Create control panel connection	3
Step 3: Run BabyWare installation program	3
Step 4: Log Into BabyWare	3
Step 5: Create a User Account	5
Step 6: Connect to the control panel	7
Step 7: Program the Imperial system	9
BabyWare Main Window	11
Main Window Elements	11
Legend	11
Programming the Security System	12
Control Panel and Modules	12
Areas and Zones	15
Door Groups and Doors	17
User Groups and Users	18
Schedules	20
Programming Home Automation	21
Outputs	21
Switches	22
Macros	25
Administering the Imperial System	30
Monitoring Security Events	30
Monitoring Home Automation	31
The Events List	32
Backing up BabyWare programming	33
Appendix A: BabyWare Menus and Commands	35
Main Menu	35
BabyWare Toolbar	37

Introduction

BabyWare is the first software program designed for both installers and end-users of Paradox products. This innovative software simplifies operations and allows you to program all system parameters on site or remotely. BabyWare removes the burden of complex keypad programming by allowing you to configure settings and monitor system events from a single point of control. The new Paradox Imperial control panel supports programming for security systems as well as for the home automation system known as MAMA.

Getting Started with BabyWare outlines the steps for setting up your Imperial system and then provides information about its features and functions. This guide has the following sections:

- Setting up the Imperial System
- BabyWare Main Window
- Programming Security Settings
- Programming Home Automation
- Administering the Imperial System

Before you begin working with BabyWare, you must ensure that you have the proper system requirements.

System requirements

- Intel® Pentium® 4, 1.4GHz processor or faster
- Microsoft® Windows® XP, Vista, 2000
- 512MB of RAM (1GB Recommended)
- 150 MB of available hard-disk space for installation (additional 150 MB recommended for multi-accounts and events)
- 1,280x1,024 video display with 32-bit color adapter

Setting up the Imperial System

This section of the BabyWare Getting Started guide describes each step in the process of setting up your Imperial system. Once you have successfully installed BabyWare, you can begin programming security settings or home automation.

Process overview

To get started with BabyWare, you must perform the following steps:

1. Set up all hardware
2. Create control panel connection
3. Run BabyWare installation program
4. Log into BabyWare
5. Create a user account
6. Connect to the control panel
7. Program the Imperial system

Step 1: Set up all hardware

Before you can begin working with BabyWare, you must set up your security system hardware. Refer to the installation manuals for all system components.

Step 2: Create control panel connection

For this version of BabyWare, there are two ways to a communication link between the control panel and your PC:

- Use an ethernet cable to connect your PC to the control panel
- Use a wireless router to connect your PC to the control panel

If you are using a wireless router, you must first connect the control panel to your network, and then connect your PC to the network.

For more information about configuring a wireless network connection, see the section “Step 1: Setting up the Router” in the installation guide for the Paradox IP100. This guide is located on the Paradox Web site at the following address :

http://www.paradox.com/Documentation/manuals/archives_installationprogramming/ip100-ei02.pdf

Note that the IP100 module is already build into the Imperial control panel.

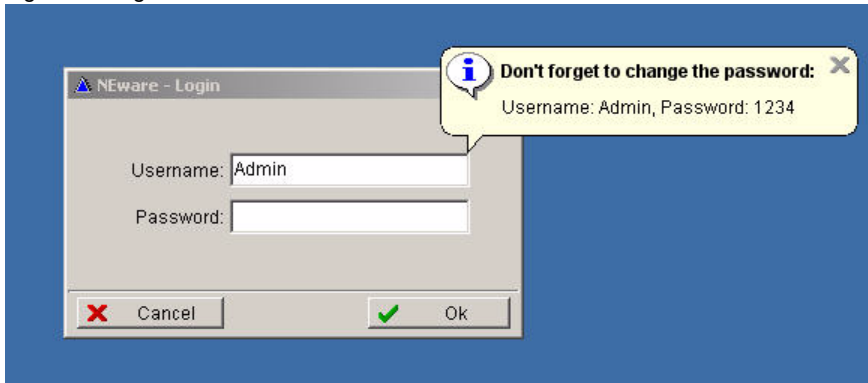
Step 3: Run BabyWare installation program

Download the installation program from the Paradox Web site. Follow the instructions on your screen to install BabyWare.

Step 4: Log Into BabyWare

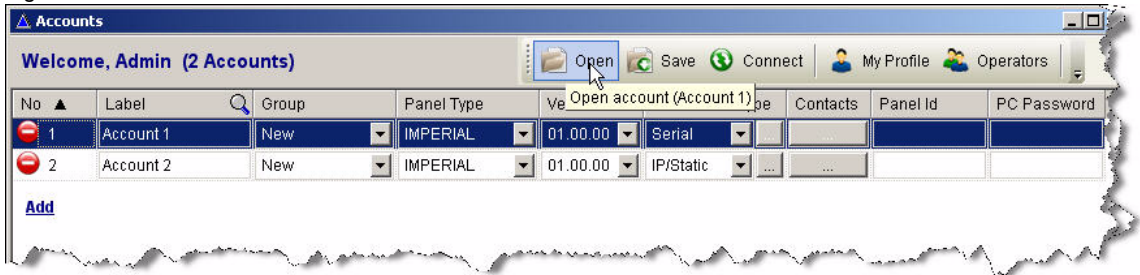
Once you have installed BabyWare, a login dialog appears. The default user name is **Admin**. The default password is **1234**.

Figure 1 - Login Screen



To log into BabyWare, enter the default login information and then click **Ok**. The Accounts window appears. It is recommended that you change your password once you log into BabyWare.

Figure 2 - Accounts Window



To change your login password

When the Accounts window appears, do the following:

1. In the Accounts window, click **My Profile**. The Admin operator profile appears.

Figure 3 - Admin Operator Window

Operator

Admin

First Name: Admin

Last Name:

Login Name: Admin

Login Password: ****

Confirm Password: ****

Type: Installer

E-mail Address:

Tel.Home:

Tel.Cell:

Tel.Work:

Tel.Fax:

Address:

Zip Code:

Date Created: 20-Feb-2008 19:11:10

Language: English

Right: Admin

Picture:

Cancel Ok

2. In the **Login Password** field, type a meaningful password. Then, in the **Confirm Password** field, retype your password.
3. Type any other relevant personal information for the primary administrator in the fields provided. Then click **Ok**.

Step 5: Create a User Account

Once you have logged into BabyWare, the Accounts window appears, and a default user account is displayed. Before you connect to the control panel you must verify the information in the Accounts window.

Figure 4 - Accounts Window

Accounts

Welcome, Admin (1 Account)





Open Save Connect My Profile Operators

No ▲	Label	Group	Panel Type	Version	Connection Type	Contacts	Panel Id	PC Password
1	Account 1	New	IMPERIAL	01.00.00	Serial	

Add

To verify account information

The information in the Accounts window can be sorted by clicking on any of the account headings. The following table describes each heading in the Accounts window and provides instructions for verifying the information in its field.

Heading	Description	Instruction
No	Displays the number assigned to the account.	Double-click this area to open an account.
Label	Displays the name of the account. Allows you to search for a particular account. For example, "Paradox Headquarters".	Click inside the field to type a new name for the user account. Click the  in the heading to search for a user.
Group	Allows you to create account groups for sorting.	Click the drop-down button to select a group for the account. Click the  button to add a new group.
Panel type	Displays the type of control panel used for the security system.	Ensure that the correct control panel type is displayed. Click the drop-down button to select a different panel type.
Version	Displays the version type of the control panel.	Ensure that the correct version type is displayed. Click the drop-down button to select a different version.
Connection type	Displays the type of connection that links BabyWare to the control panel.	(1) Ensure that the correct connection type is displayed. Click the drop-down to select a different connection. (2) Click the  button to view and/or change connection settings. For more information about connecting to the control panel, see the section "Step 6: Connect to the control panel" on page 7.
Contacts	Provides an address book where you can keep track of important contacts. For example, "owner", "security", "upper management", etc.	Click the  button to open the contacts address book. Enter the relevant information. To add a new contact, click Add .
System Name	Displays the user name programmed in the control panel	Ensure that the correct system name appears in this field. By default, the administrator's system ID is Admin and the System Master's system ID is Guest.
System Password	The designated field for the password that connects BabyWare to the control panel.	Ensure that the password appears in this field when you log into BabyWare.

When you have finished creating an account or verifying the information in the Accounts window, be sure to click **Save** on the toolbar to save any changes before connecting to the control panel.

Step 6: Connect to the control panel

Once you have created an account, you can connect to the control panel to begin configuring security system parameters. Alternatively, you can pre-program security system parameters and then connect to the control panel. Before attempting connection, be sure that the System Name and System Password fields of the Accounts window show the correct information.

To connect to the control panel you must first verify your connection settings. This version of BabyWare supports the following types of connection:

- Static/IP - a fixed IP network connection to the control panel
- DNS/IP - a dynamic IP network connection to the control panel

Note that this version of BabyWare does not support Serial connections to the control panel.


For more information on connecting the control panel, see the installation guide for the Paradox IP100. This guide is located on the Paradox Web site at the following address :

http://www.paradox.com/Documentation/manuals/archives_installationprogramming/ip100-ei02.pdf

Note that the IP100 module is already build into the Imperial control panel.

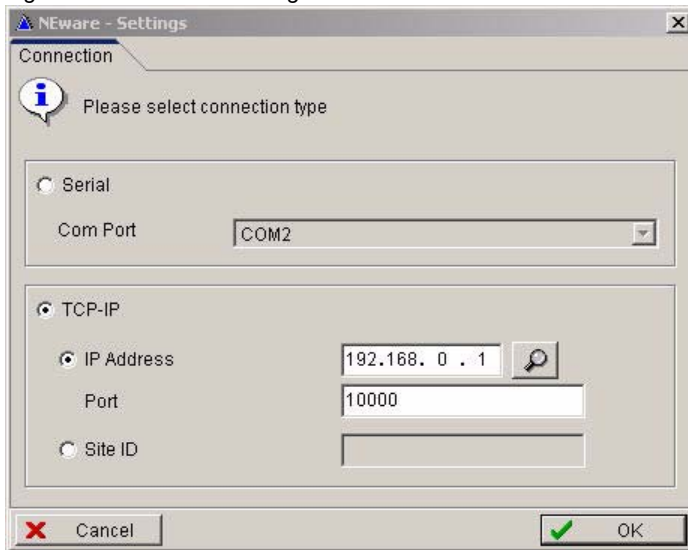
To connect to the control panel

To verify your connection settings and connect to the control panel, do the following:


1. Under the Connection Type heading, from the drop-down menu, select the appropriate connection type. Then click the  button. The connection Settings window appears.

Note that Serial connections are not supported in this version of BabyWare.

Figure 5 - Connection Settings Window



2. Do one of the following:
 - To connect to the control panel using a fixed IP network connection, click the **TCP-IP** radio button. Then click the **IP Address** radio button. Enter the IP address assigned to the control panel and verify the port number. The default address in the control panel is 192.168.0.1. The default port number is 10000. Click **Ok**.

Alternatively, you can select an existing control panel on your network by clicking the  button. The Locate IP Device on Network window appears with a list of control panels. Select the control panel you want to connect to and then click **Ok**.

- To connect to the control panel using a dynamic IP network connection using our ParadoxMyHome service, click the **TCP-IP** radio button. Then click the **Site ID** radio button and enter the site ID, for example, “John’s Home” . Click **Ok**.

A system progress window appears and displays BabyWare connection tasks. If the connection is successful, you can open the account and begin programming the security system. Continue to the section “Step 7: Program the Imperial system” on page 9.

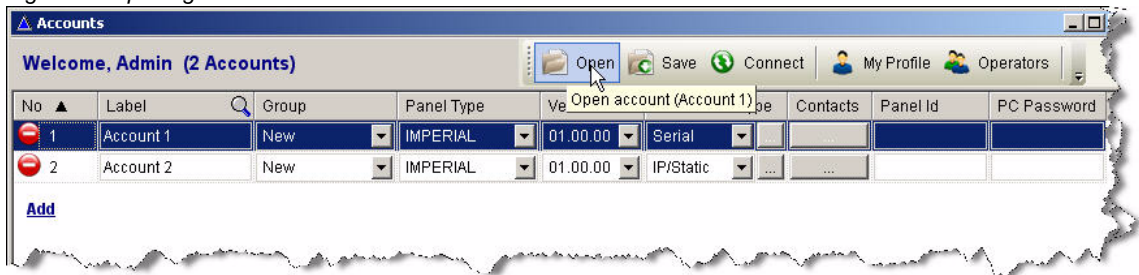
If the connection is halted, see the procedure “To correct a halted connection” on page 8 of this section.

To pre-program security settings

If you want to configure your security system before connecting to the control panel, do the following:

1. Highlight the account you want to open by clicking the account number.
2. From the menu at the top of the window, click **Open**. The Main Window appears.

Figure 6 - Opening an Account



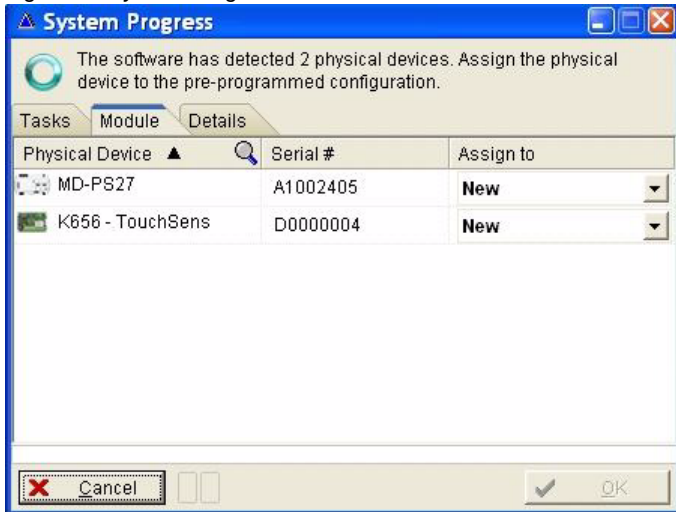
3. Follow the instructions in the section “Step 7: Program the Imperial system” on page 9. Then follow the instructions in this section for connecting to the control panel.

To correct a halted connection

If BabyWare detects a mismatch of programmed modules to physical modules, you must manually assign the new modules. To correct a halted connection, do the following:

1. In the System Progress window, click the **Module** tab. A list of devices appears.

Figure 7 - System Progress Window



2. Under the Assign-to heading, do one of the following:
 - To add a new device to the system, select **New** from the drop-down menu.
 - To connect an existing device, select **Connect** from the drop-down menu.
3. Click **Ok**. Then you can begin programming the security system.

Step 7: Program the Imperial system

Once you have connected to the control panel, you can open the Main Window of an account to program security settings or home automation. From this window you can configure the parameters of areas, zones, doors, users, and schedules. You can also configure switches and macros to perform functions in your home.

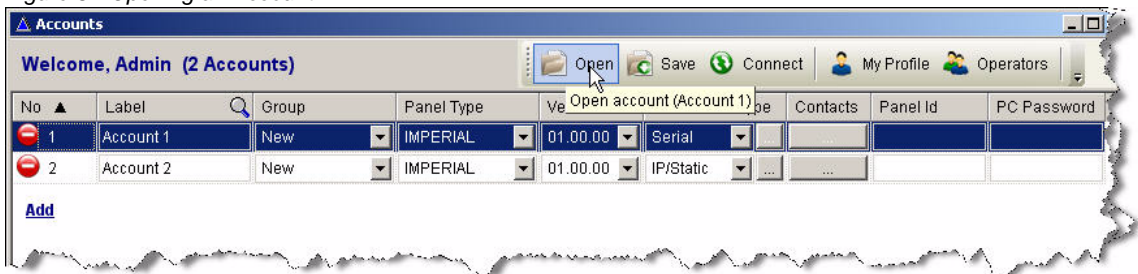
For more detailed information about programming security settings, see the section "Programming the Security System" on page 12 of this guide.

For more detailed information about programming home automation, see the section "Programming Home Automation" on page 21.

To open the Main Window of an account

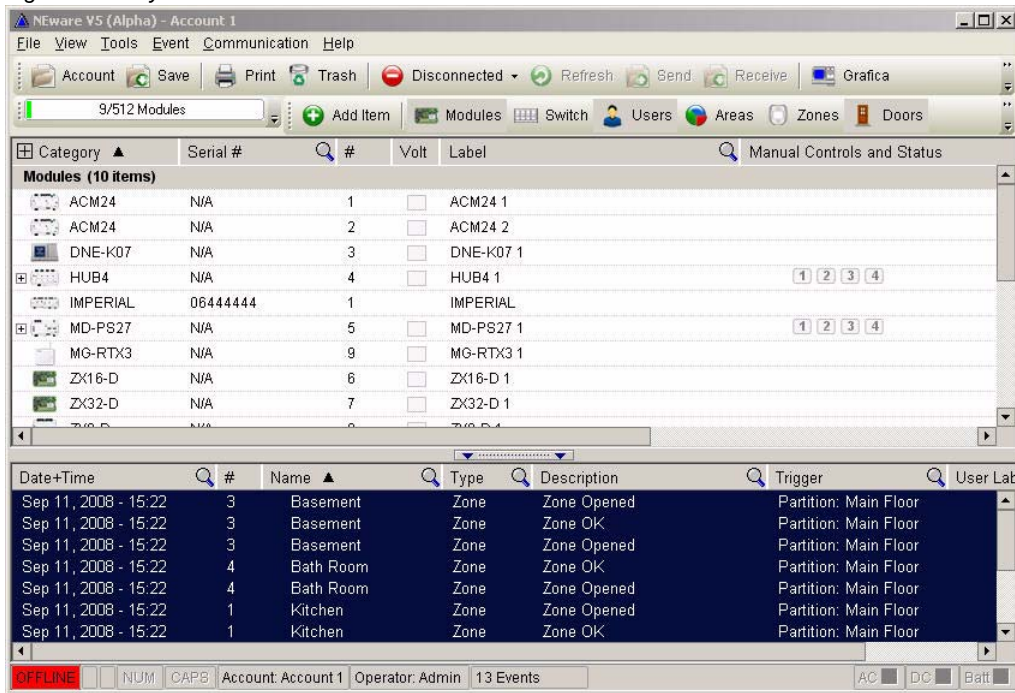
1. Highlight the account you want to open by clicking the account number.
2. From the menu at the top of the window, click **Open**. The Main Window appears.

Figure 8 - Opening an Account



You may go back to the Accounts window at any time by clicking the **Accounts** button on the BabyWare toolbar in the Main Window.

Figure 9 - BabyWare Main Window

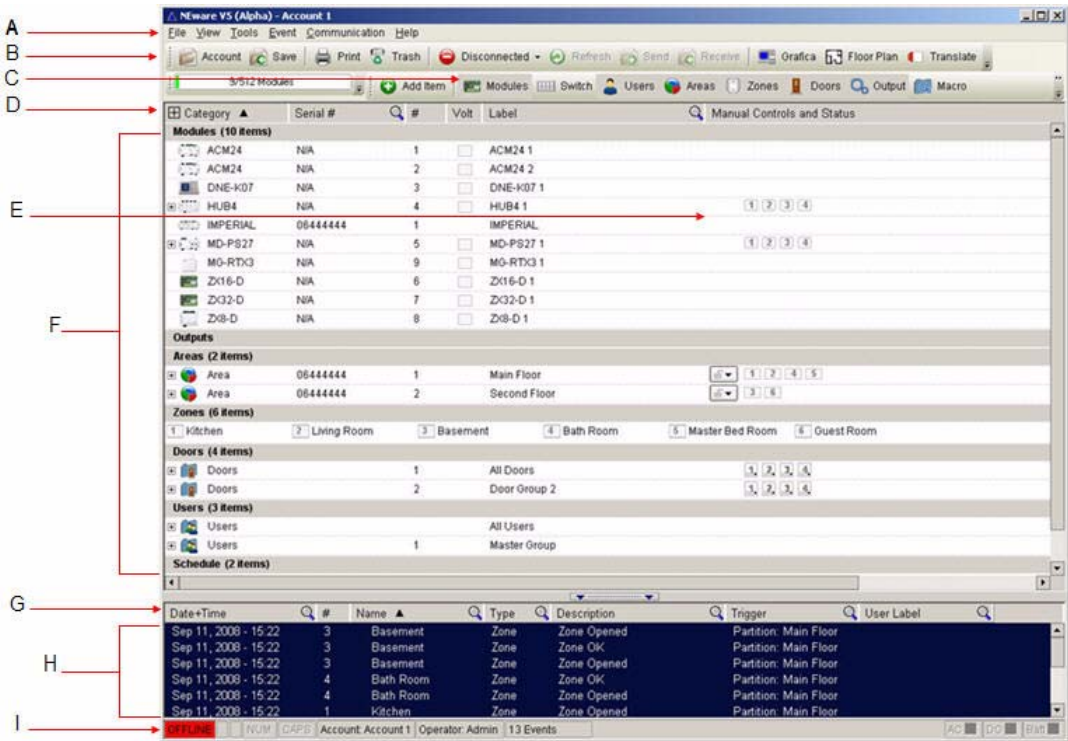


When you have finished programming the system, you must apply the settings to the control panel. Every time you make a system modification in BabyWare, save your changes by clicking the **Save** button on the BabyWare toolbar in the Main Window.

BabyWare Main Window

When you open an account, the BabyWare Main Window appears. The sections of the Main Window are automatically populated with the modules that are connected to the control panel. This section outlines the elements of the BabyWare user interface.

Main Window Elements



Legend

A	Main menu	F	System elements
B	Toolbar	G	Events List headings
C	Toggle menu	H	Events List
D	System element headings	I	Status bar
E	Manual controls		

Programming the Security System

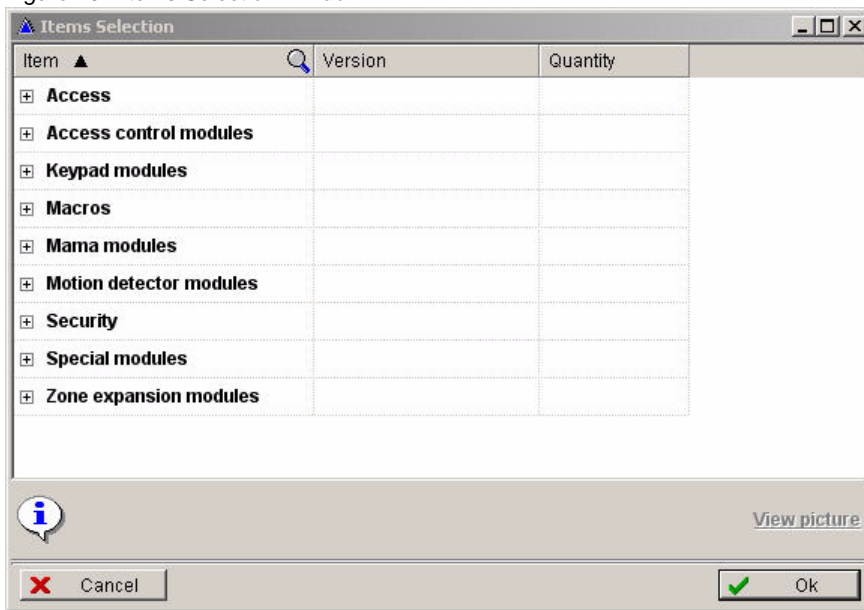
Configuring the parameters of your security system with BabyWare is a simple process. You can configure all of the items in the Main Window by accessing the Properties window of any system element. This section briefly describes how to modify the settings for the following elements:

- Control panel and modules
- Areas and zones
- Door groups and doors
- User groups and users
- Schedules

You configure settings by accessing the Properties menu of a system element.

You can add new elements to the security system either from a Properties window, or by clicking the **Add Item** button on the BabyWare toolbar. The **Add Item** button opens the Items Selection window where you can add modules, doors, areas, zones, users, and schedules to your system.

Figure 10 - Items Selection Window



You can also add zones to areas, doors to door groups, and users to user groups in the Main Window by using the right-click button. For example, to add a zone to an area, right-click the area and select **Add Zone**.

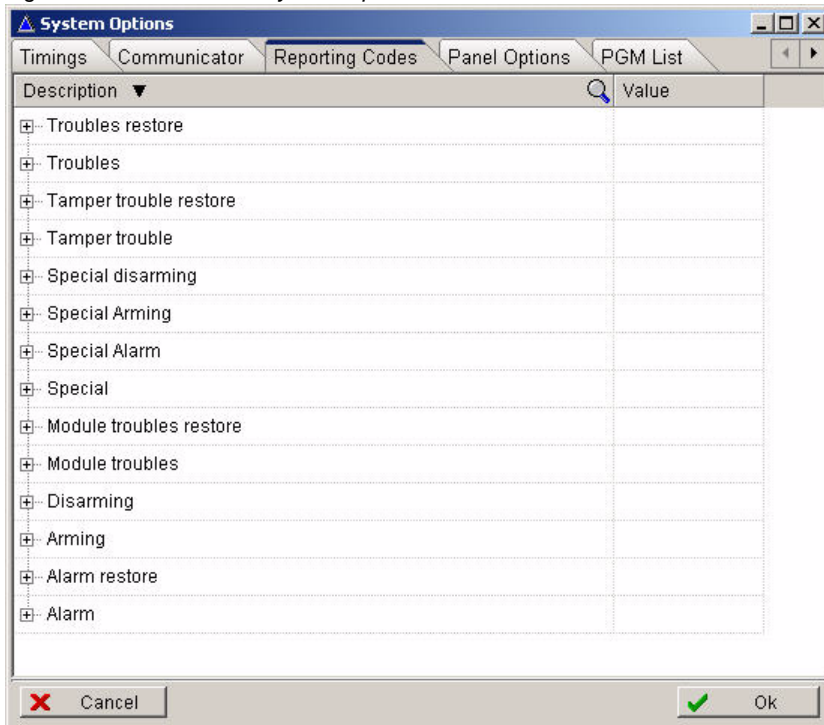
Control Panel and Modules

The procedures in this section describe how to modify the settings for your control panel and the modules connected to that control panel.

To configure the control panel

1. Right-click the control panel and select **Properties**. The control panel System Options window appears. The tabs in this window allow you to program different features of the control panel, for example, Timings, Reporting Codes, and PGMs.

Figure 11 - Control Panel System Options

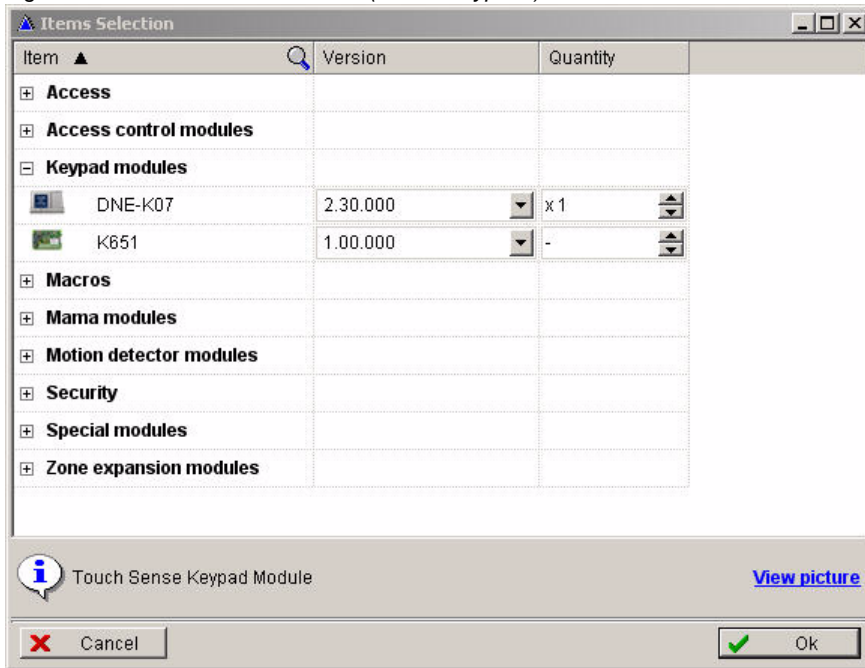


2. Program the control panel and then click **Ok**.
3. Once you have configured system modules you must apply the changes to the control panel. To apply these changes, click the **Send** button on the BabyWare toolbar in the Main Window.

To configure modules

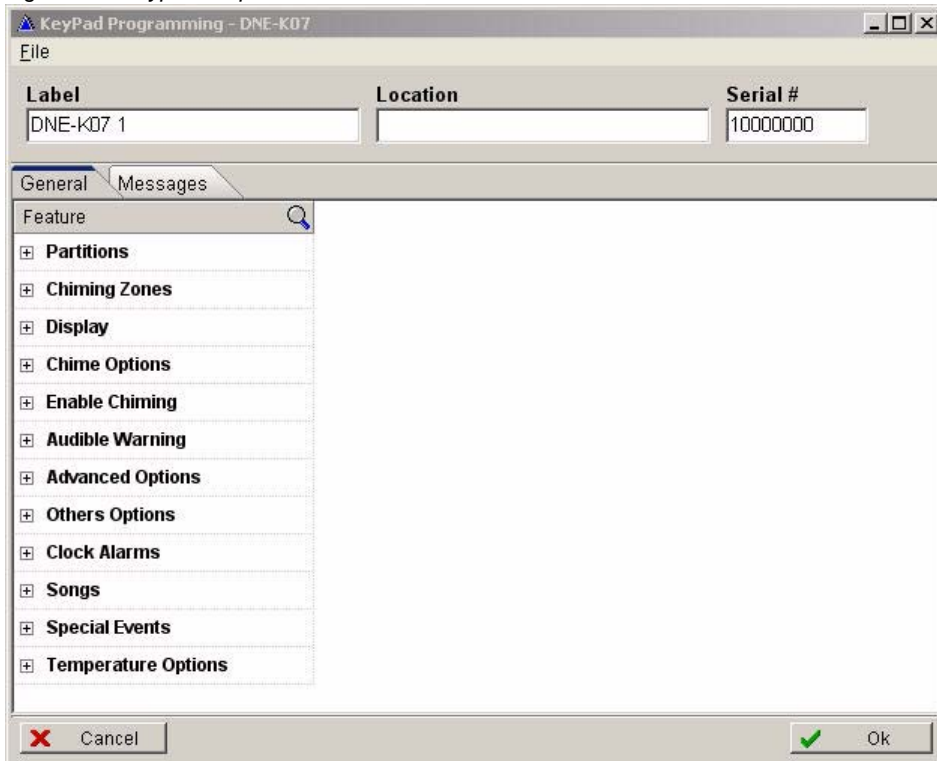
1. In the BabyWare toolbar, click **Add Items**. The Items Selection window appears. From this window, click the modules you want to add to the system and use the arrow buttons to define the quantity.
The example below shows Keypad selection in the Items Selection window.

Figure 12 - Items Selection Window (Select Keypads)



2. Select the item(s) you want to add and then click **Ok**. The new module appears in the Modules section of the Main Window.
3. To program the new module, right-click the module and select **Properties**. The Properties window of the module appears.
The example in the figure below shows the Properties window of the recently added Keypad module.

Figure 13 - Keypad Properties



4. Configure the module and then click **Ok**. You must then save your changes and update the control panel by clicking the **Send** button on the BabyWare toolbar in the Main Window.

Areas and Zones

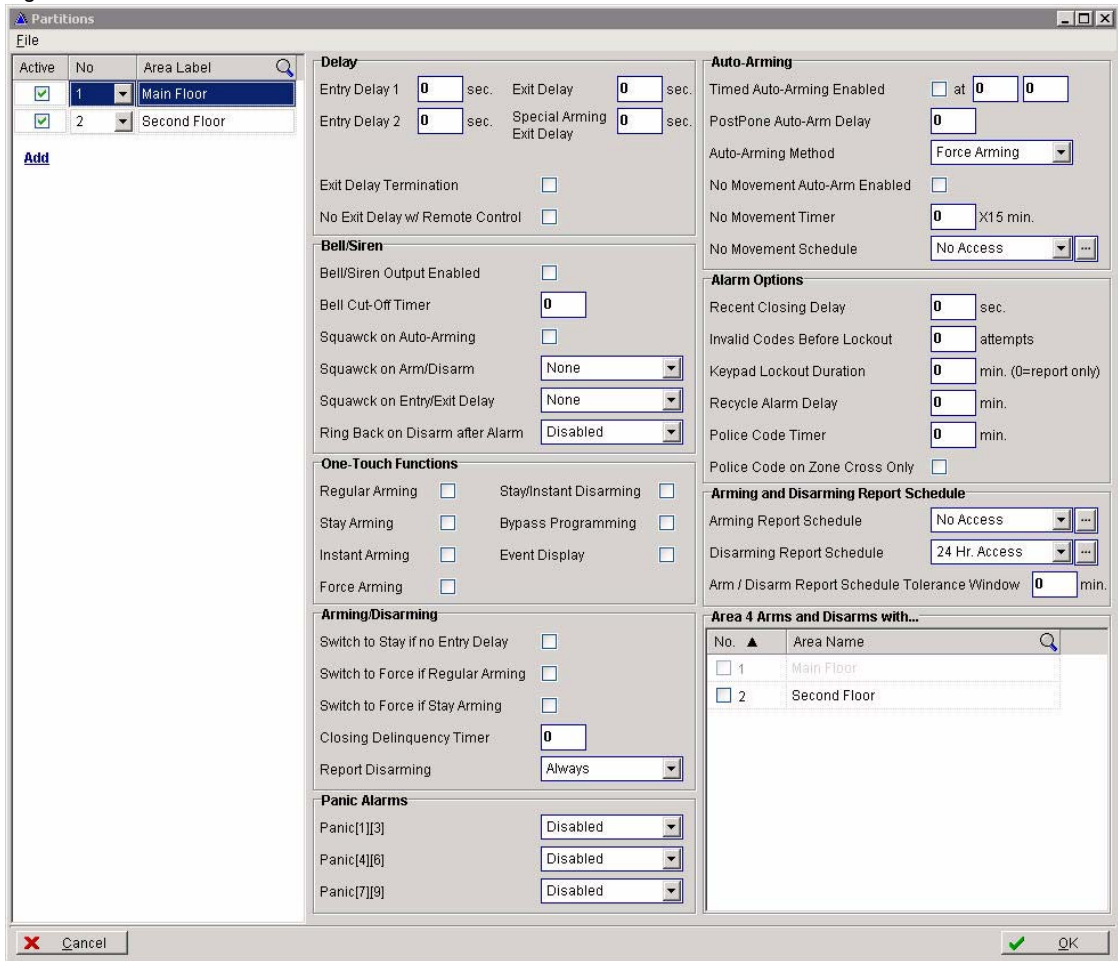
You can divide your security system into multiple areas (partitions). Each area is a separate “mini system” containing a series of zones. Users are permitted access to their assigned areas only. From the areas Properties window you can arm and disarm the system, set alarm options, and set arming schedules.

Your security system may have several zones within an area. A zone is usually defined by a single detection device. When you open BabyWare, the Main Window displays 8 zones by default. You can link a zone to an area from the zone Properties window.

To configure areas

1. Right-click the area and select **Properties**. The Partitions window appears. You can add new areas by clicking the **Add** button in the left pane.

Figure 14 - Partitions Window

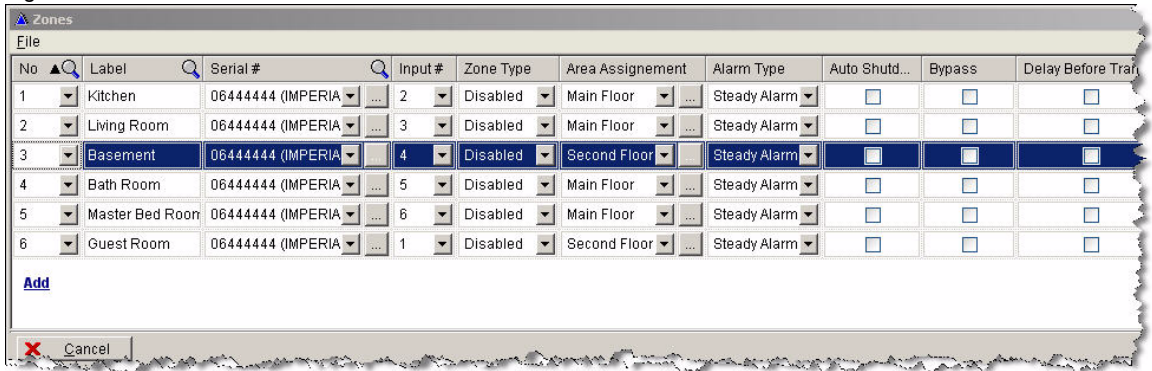


2. Program the area and then click **Ok**.
3. Once you have configured areas you must save your changes by clicking the **Save** button on the BabyWare toolbar in the Main Window.

To configure zones

1. Right-click a zone and select **Properties**. The Zones window appears. In this window, you can link a zone to an area that you configured.

Figure 15 - Zones Window



2. Program the zone and then click **Ok**.
3. Once you have configured zones you must save your changes by clicking the **Save** button on the BabyWare toolbar in the Main Window.

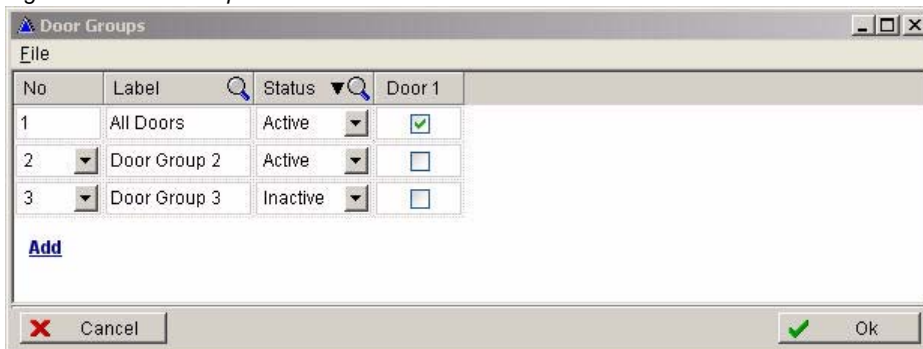
Door Groups and Doors

You can create a new door group and then add doors, or you can add doors to an existing door group. From the Properties window of a door you can program door settings such as lock schedules and alarm types. You can also specify access information.

To create new door groups

1. Right-click a door group in the Main Window and select **Properties**. The Door Groups window appears.

Figure 16 - Door Groups Window

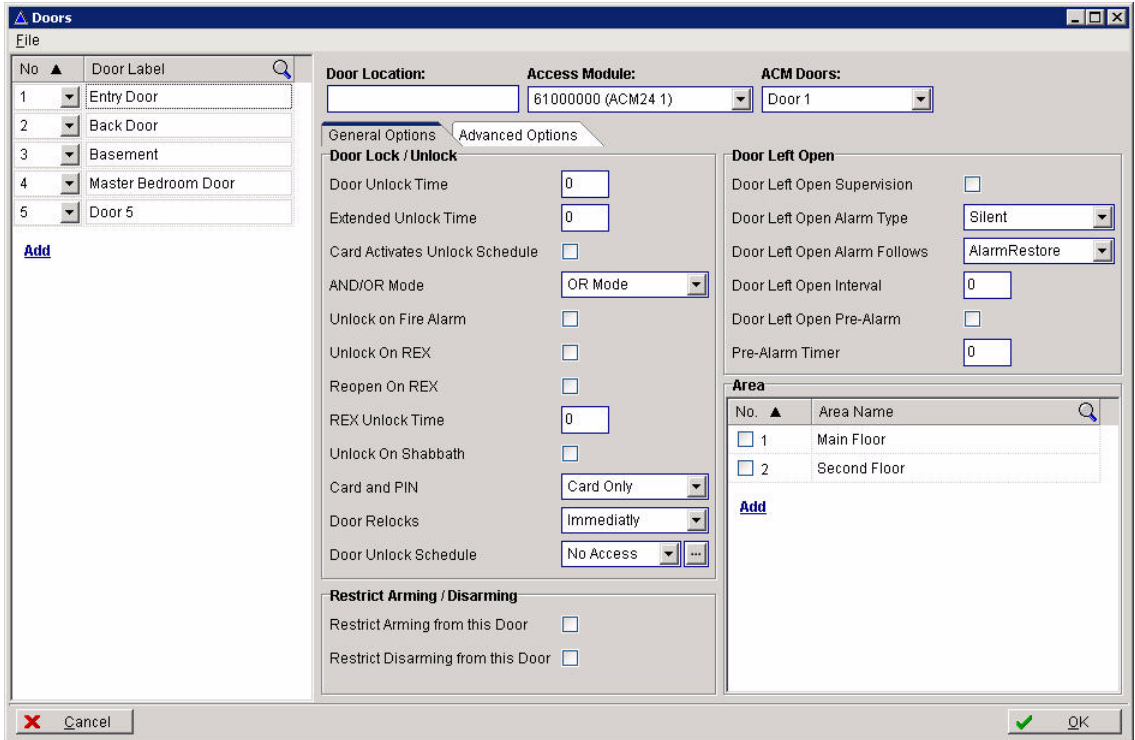


2. Click the **Add** button to create a new door group, configure the door group, then click **Ok**. The door group appears in the Main Window.
3. Save your changes by clicking the **Save** button on the BabyWare toolbar in the Main Window.

To configure doors

1. Add a door to a door group by right-clicking a door group and selecting **Add Door**. A new door appears in the door group.
2. Right-click a door in a door group and select **Properties**. The Doors window appears.

Figure 17 - Doors Window



3. In the General Options tab you can assign schedules and alarm types to doors.
4. To configure other settings such as time-delays and lockout options, click the Advanced Options tab. Then click **Ok**.
5. Once you have configured doors you must save your changes by clicking the **Save** button on the BabyWare toolbar in the Main Window.

User Groups and Users

BabyWare removes the burden of configuring each individual user by allowing you to configure user groups. You configure rights and settings for user groups and then assign individual users to those groups. You can also assign door groups and schedules to user groups.

When you open an account BabyWare provides two user groups by default: a System Master group and a Master Group.

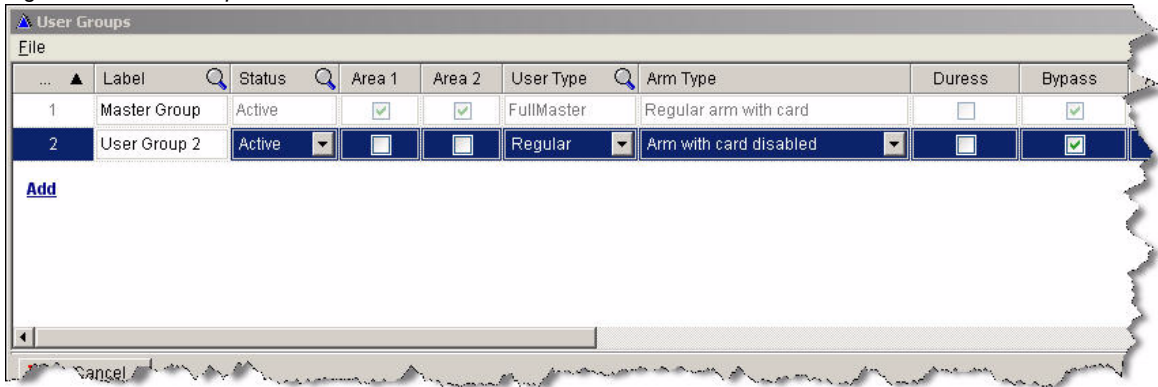
To add users to user groups, right-click a user group and select **Add user**.

To create a new user group

In order to assign new users to the rights defined in user groups, you must create a new user group by doing the following:

1. Right-click the Master Group and select **Properties**. The User Group window appears.

Figure 18 - User Groups



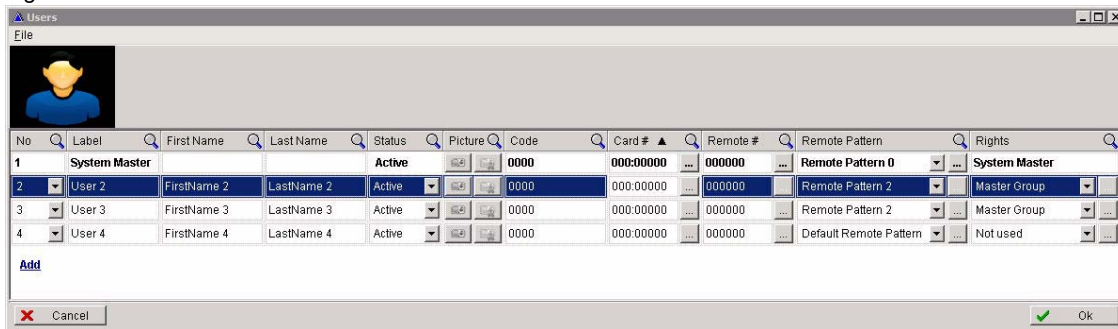
2. Add a new user group by clicking the **Add** button. A new user group appears in the list.
3. Change the name of the group and then configure user group settings and access rights. Then click **Ok**. You must save your changes by clicking the **Save** button on the BabyWare toolbar in the Main Window.

To configure users

To configure user information, do the following:

1. To add a new user, right-click a user group and select **Add User**. A new user appears under the user group section in the Main Window.
2. Right-click a user in the Main Window and select **Properties**. The Users window appears. From this window you can configure access codes and access rights. The drop-down menu in the Rights column displays the user groups that you configured. You can also add pictures for users in this window.

Figure 19 - Users Window



3. Program users and then click **Ok**.
4. Once you have configured users you must save your changes by clicking the **Send** button on the BabyWare toolbar in the Main Window.

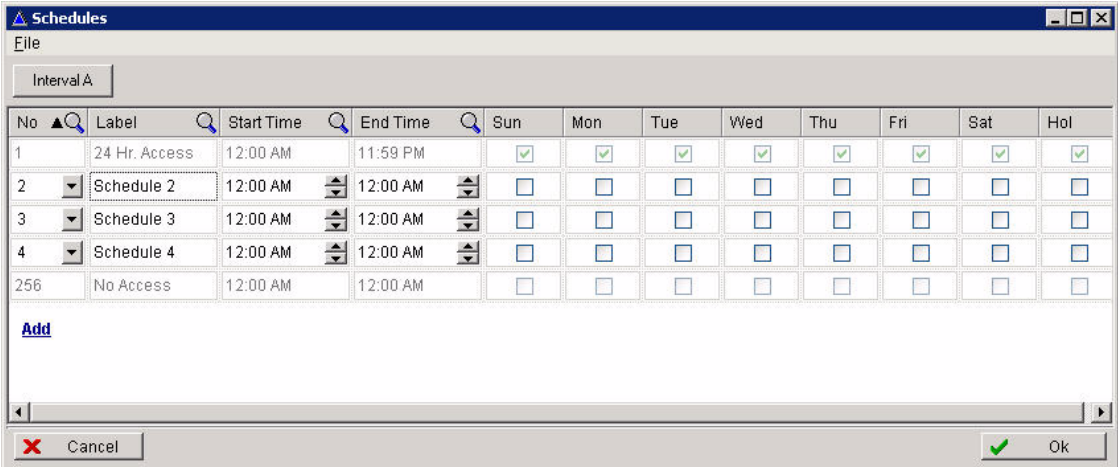
Schedules

A schedule determines the hours, days, and holidays that an access code is valid. By default the Admin has 24-hour access to all doors everyday. You configure schedules and then assign those schedules to areas, user groups, and doors.

To configure schedules

1. Right click a schedule in the Main Window and select **Properties**. The Schedules window appears.

Figure 20 - Schedules Window



2. Add a new schedule by clicking the **Add** button. Then click in the area under the Label heading and type a meaningful name for the new access schedule.
3. Configure the schedule for a time interval. To configure a schedule for a different time interval within the same week, click the **Interval** button.
4. Repeat this procedure for every schedule you want to create. Then click **Ok**.

Programming Home Automation

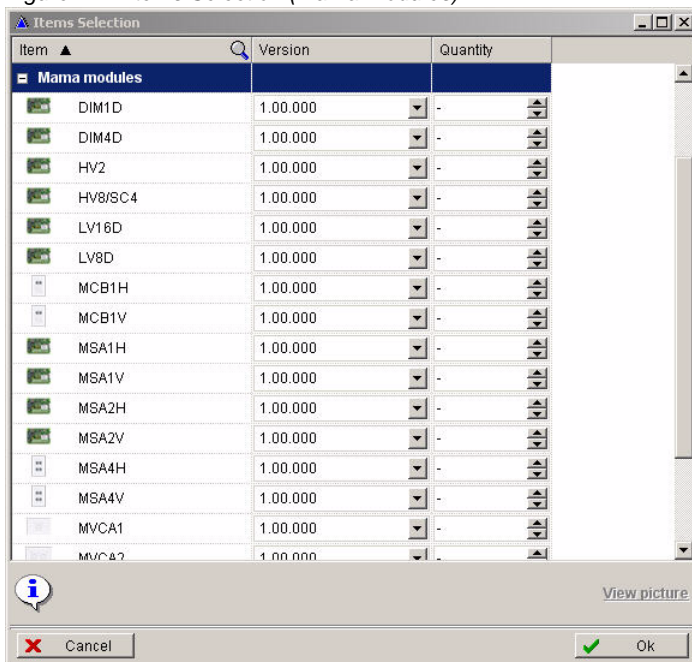
BabyWare allows you to control the functions of various outputs (such as lights, shutters, and sprinklers) in your MAMA home automation system. You can activate the functions of these outputs directly from the BabyWare interface as well as from configurable buttons in your home. You can also customize the activation and deactivation behavior of your outputs by creating macros.

This section of the BabyWare Getting Started guide shows you the basics of programming outputs, switches, and macros.

Outputs

The modules of your MAMA system control the outputs that you configure. To add MAMA modules, click the **Add Item** button on the BabyWare toolbar. The **Add Item** button opens the Items Selection window. Expand the Mama Modules section, select the items you want to add, and then click **Ok**. The new modules appear in the Main Window.

Figure 21 - Items Selection (Mama Modules)



To configure the programming of outputs, do the following:

1. In the BabyWare Main Window, under Mama Modules, expand a MAMA controller module.
2. Right-click one of the outputs under the controller and click **Properties**. The Relay Controller Properties window appears.
3. Program the output and then click **Ok**.
4. Once you have configured outputs you must save your changes by clicking the **Save** button on the BabyWare toolbar in the Main Window. The new outputs can now be linked to switches or macros.

Switches

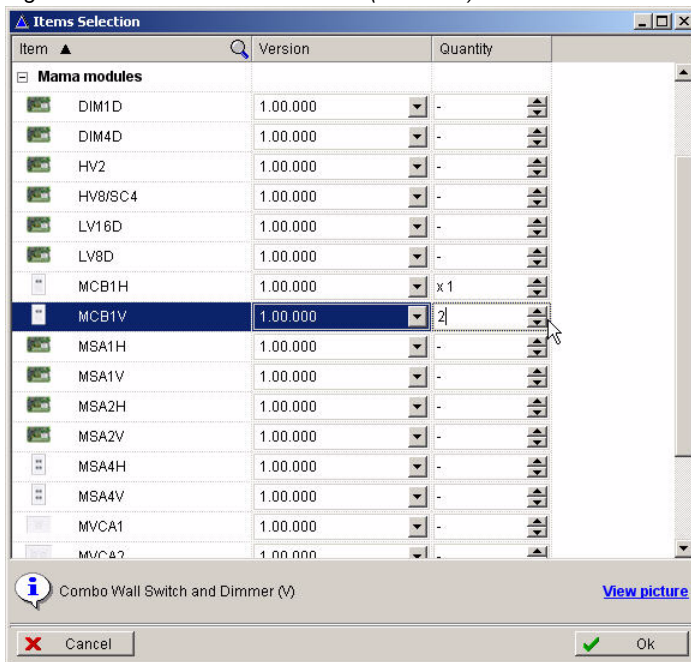
Configuring switches allows you to link outputs, security options, or macros to buttons in your home. You can then activate any of these options from the physical buttons in your home as well as from the BabyWare interface.

A switch module may include buttons, a dial, or both. Buttons can control security events or home automation outputs. Dials allow you to adjust the degree of an output's action. For example, a dial can act as a dimmer for lights. Dials can be local (adjusting one output area at a time) or global (adjusting many output areas at once). Just as with buttons, you can control an output from the physical dial as well as from the BabyWare interface.

To configure switches

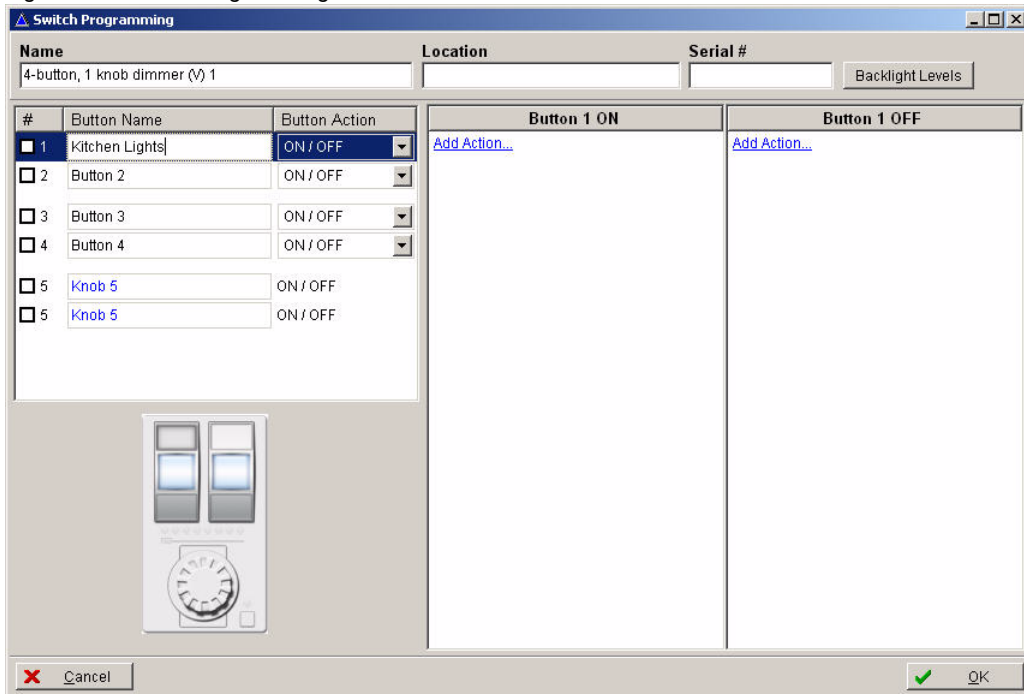
1. If there are not already switches in the Main Window, click the **Add Item** button. The Items Selection window appears.

Figure 22 - Items Selection Window (Switches)



2. Expand the Mama Modules section, select the item(s) you want to add and then click **Ok**. The new modules appear in the Switches section of the Main Window.
3. In the Main Window, by the switch you want to configure, click **Configure**. This opens the Switch programming window.

Figure 23 - Switch Programming Window



4. In the fields under the Button Name heading, type meaningful names for each of the buttons. The button names correspond to the buttons in the image of the module as well as the to the buttons on the physical device.
5. If you want the same button to activate and deactivate the same output, set the Button Action to ON/OFF. If you want one button to activate the output and another button to deactivate the output, set the Button Action to ON and the Button Action for the next button will automatically change to OFF.
6. To program the output activation behavior for the highlighted button, click **Add Action** in the Button ON section. Then do one of the following:
 - To select and configure outputs for the ON button, click **Control Output**. The Select Outputs window appears. This window displays all of the outputs in your system and their configurable settings. Click the check box beside each output you want the button to control. Click **Ok**.
 - To configure a button to trigger security functions such as panic, arm/disarm or stay arm, click **Control Alarm System**. Select the security function(s) you want the button to control. Click **Ok**. *<<i have not seen this>>*
 - To configure a button to trigger a macro sequence, click **Start/Stop Macro Sequence**. The Select Macro Sequence to Start window appears. Click the check box beside the macro you want the button to control. Click **Ok**. For more information about programming macros, see the section “Macros” on page 25.
 - To copy the programming from one button to another, click **Copy Button Programming**. *<<this does not yet exist>>*
7. To program the output deactivation behavior for the highlighted button, click **Add Action** in the Button OFF section. Then do one of the following:
 - To select and configure outputs for the OFF button, click **Control Output**. The Select Outputs window appears. This window displays all of the outputs in your system and their

configurable settings. Click the check box beside each output you want the button to control. Click **Ok**.

- To configure a button to trigger security functions such as panic, arm/disarm or stay arm, click **Control Alarm System**. Select the security function(s) you want the button to control. Click **Ok**. <<i have not seen this>>
 - To configure a button to trigger a macro sequence, click **Start/Stop Macro Sequence**. The Select Macro Sequence to Start window appears. For more information about programming macros, see the section “Macros” on page 25.
 - To configure a button to stop a macro sequence, click **Stop Macro Sequence**. The Select Macro Sequence to Stop window appears. Click the check box beside the macro you want the button to stop. Click **Ok**.
 - To copy the programming from one button to another, click **Copy Button Programming**. <<this does not yet exist>>
8. To program a dial on your switch module, highlight either the local or global dial and click **Add Action** in the Button ON section. Then do one of the following:
- To select and configure outputs for Button ON, click **Control Output**. The Select Outputs window appears. This window displays all of the outputs in your system and their configurable settings. Click the check box beside each output you want the button to control. Click **Ok**.
 - To configure a dial to trigger a macro sequence, click **Start/Stop Macro Sequence**. The Select Macro Sequence to Start window appears. Click the check box beside the macro you want the dial to control. Click **Ok**. For more information about programming macros, see the section “Macros” on page 25.
 - To configure a dial to stop a macro sequence, click **Stop Macro Sequence**. The Select Macro Sequence to Stop window appears. Click the check box beside the macro you want the dial to stop. Click **Ok**.
 - To copy the programming from one button to another, click **Copy Button Programming**. <<this does not yet exist>>

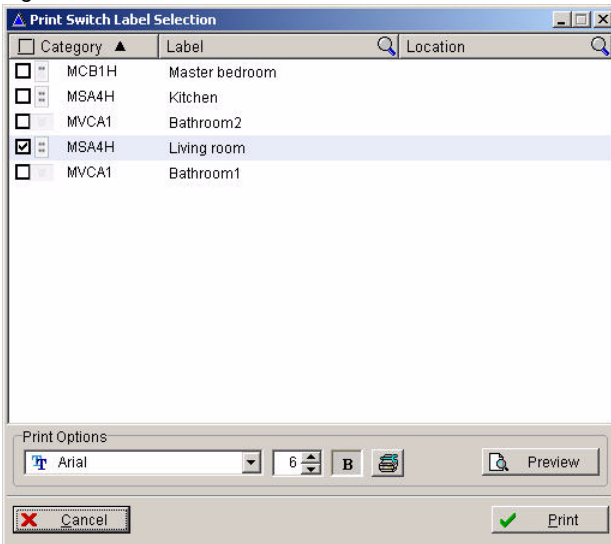
The switches you configure appear in the Main Window with icons and sliders in the manual controls and status column. At any time, you can activate a switch function from this column. You can also activate switch functions from the image of the switch module in its programming window.

Switch Labels

To create a name for the label of a switch, right-click the controller in the Switch section of the Main Window and then click **Rename**. Type a meaningful name for the switch and then click **Ok**.

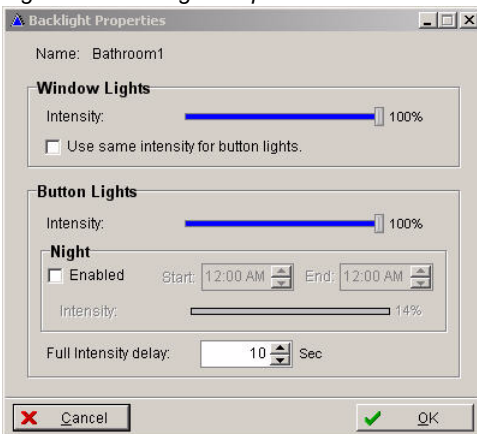
You can slide labels into the illuminated label window on the switch module. To print labels, right-click the controller and then click **Print Labels**. The Print Switch Label Selection window appears. From this window you can select the label you want to print as well as the font and size of its text.

Figure 24 - Print Labels



You can adjust the intensity of the backlight for the switch label from the Switch Programming window. Do do this, right-click the module and then click **Properties**. Click the Backlight Levels button. The Backlight Properties window appears. Adjust the light levels and then click **Ok**.

Figure 25 - Backlight Properties



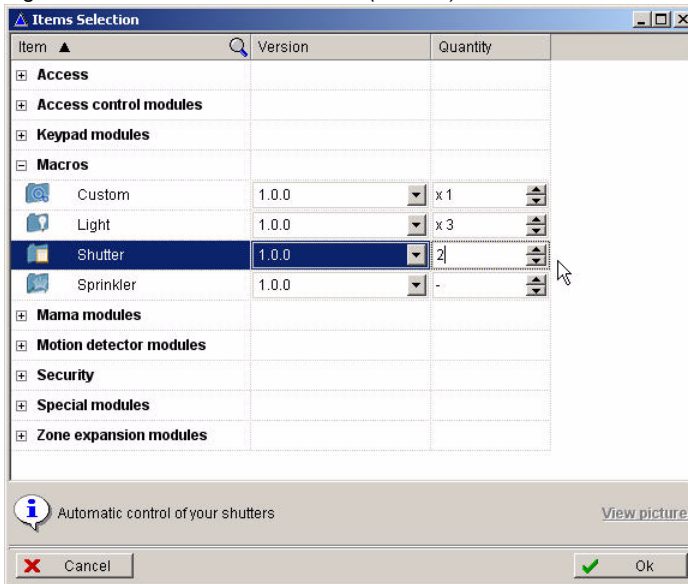
Macros

A BabyWare macro is a pair or a group of devices that work together to perform a specific function in your home. You create macros by assigning trigger devices to output devices. A trigger is the device that determines how and when an output will be activated. An output is the device that turns on or off when activated by its trigger. For example, if you want the lights to turn on automatically when you walk into your kitchen, you can create a macro that links a motion detector (the trigger) to the lights in your kitchen (the output). When the motion detector senses a presence in the kitchen, it then triggers the lights to turn on. Outputs can be triggered by events or schedules that you configure.

To configure macros

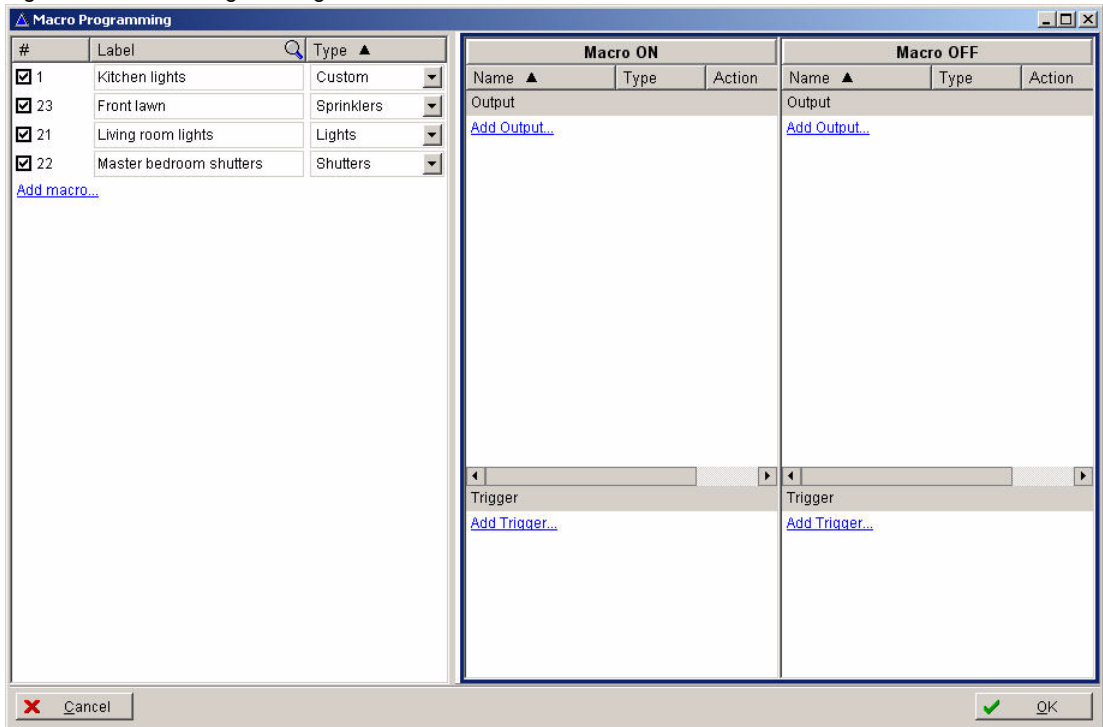
1. From the BabyWare Main Window, click the **Add Item** button. The Items Selection menu appears.

Figure 26 - Items Selection Window (Macros)



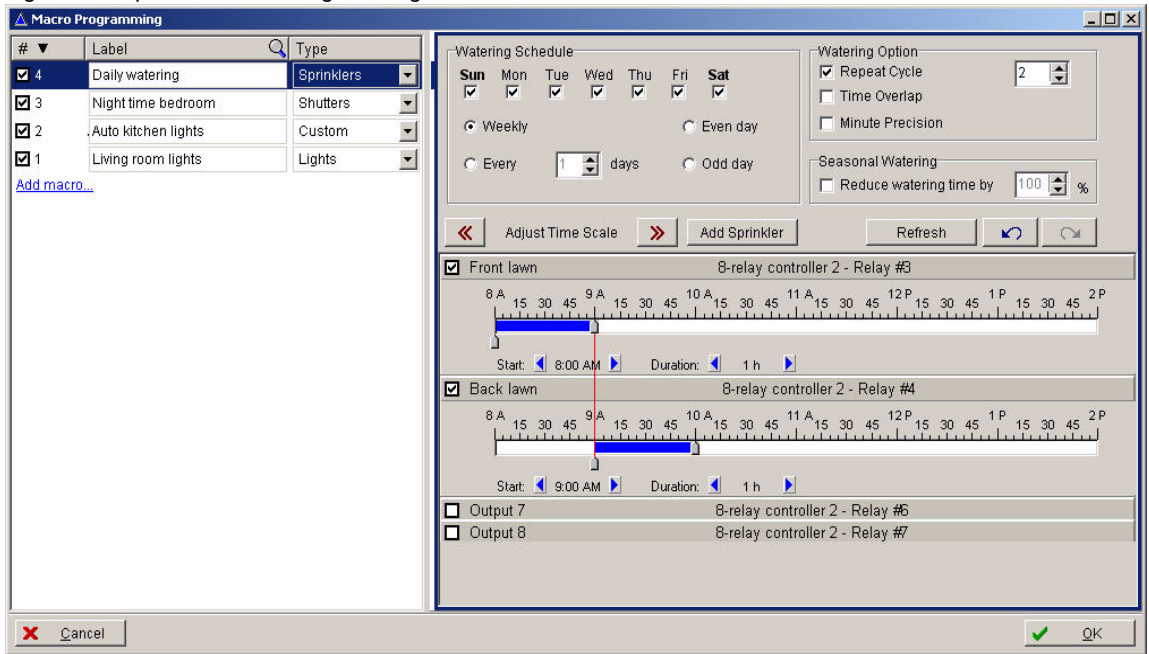
2. Expand the **Macros** heading, select the macros you wish to add, and click **Ok**. The new macros appear in the Macros section of the Main Window.
3. In the Main Window, by the macro you want to configure, click **Configure**. This opens the macro programming window.

Figure 27 - Macro Programming Window



4. In the fields under the Label heading, type meaningful names for each of the macros you want to create. Select the correct output type for your macro from the drop-down menu under the Type heading.
5. If you want to configure macros for sprinklers, proceed to the next step. If you want to configure custom macros, or macros for shutters or lights, do the following:
 - a. Click **Add Output** in the Macro ON panel. The Select Outputs window appears. This window displays all of the outputs in your system and their configurable settings. Click the check box beside each output you want the macro to control. Be sure that the appropriate output type appears under the Type heading. Click **Ok**. The outputs are added to the Output section under Macro ON and Macro OFF.
 - b. Click **Add Trigger** in the Macro ON panel. Select either **Add Schedule** or **Add Event**. Then program the schedule or event that you want to trigger the output. Click **Ok**. The triggers are added to the Trigger section under Macro ON and Macro OFF. You can link triggers together by using the AND/OR options from the drop down menus next to each trigger.
6. To configure a macro for sprinklers, highlight a sprinkler macro in the left panel. The watering schedule and options appear in the right panel. If you have already added sprinkler outputs to the Imperial system, they will appear at the bottom of the right panel. If you have not already added sprinkler outputs you can add them by clicking the **Add Sprinkler** button in the right panel.

Figure 28 - Sprinkler Macro Programming



7. Click the check box of a sprinkler output to display its adjustable watering timeline. Program the schedule, options, and duration for watering. Click **OK**.

The macros you program appear in the Main Window under the Macros heading. You can change the name of a macro at any time by clicking its label. You can automatically trigger a macro by clicking the icons in the Manual Controls and Satus column.

Figure 29 - Programmed Macros in Main Window

BabyWare V.2008.1.0.28 (Alpha) - Account 1

File View Tools Event Communication Help

Account Save Print Trash Connected to 10.10.1.221 Refresh Send Receive Grafica

7/512 Modules Add Item Modules Switch Users Areas Zones Doors Output

Category Label On Plan Manual Controls and Status

Macros (4 items)

Lights	Living room lights	[Power Icon]
Light	Living room lights	[2]
Custom	Auto kitchen lights	[Power Icon]
Light	Kitchen lights	[3]
Sprinklers	Daily watering	[Power Icon]
Sprinkler	Back lawn	[5]
Sprinkler	Front lawn	[4]
Shutters	Night time bedroom	[Power Icon]
Shutter	Shutter 1	[1]

Control Panel

IMPERIAL IMPERIAL [1] [2] [3] [4] [5]

Modules

Mama Modules (2 items)

Date+Time	Label	#	Type	Location	Serial	Description
Nov 18, 2008 ...	HUB4D: Module 002	4	Module		F0002452	Trouble: Module VBus Fail
Nov 18, 2008 ...	HUB4D: Module 002	4	AUX		F0002452	Auxiliary Deactivated
Nov 18, 2008 ...	HUB4D: Module 002	3	AUX		F0002452	Auxiliary Deactivated
Nov 18, 2008 ...	HUB4D: Module 002	2	AUX		F0002452	Auxiliary Deactivated
Nov 18, 2008 ...	HUB4D: Module 002	1	AUX		F0002452	Auxiliary Activated
Nov 18, 2008 ...			Module		1065082A	Trouble: Network fault
Nov 18, 2008 ...	Area 032	32	Partition		06444444	PC Disarm
Nov 18, 2008 ...	Area 032	32	Partition		06444444	PC Arm

ONLINE
 NUM
 CAPS
 Control Panel Time: 01:48:30 PM
 Account: Account 1
 Operator: Admin
 38 Events
 28.21V DC 0.2V Batt 43.57V

Administering the Imperial System

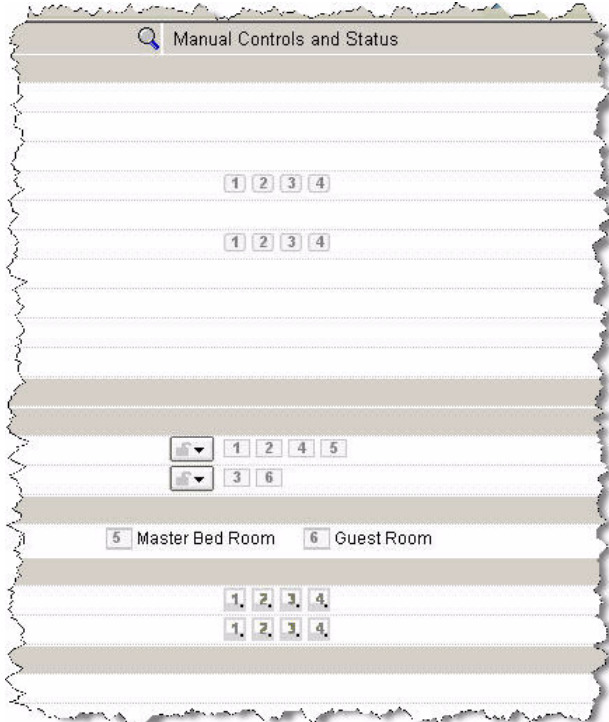
Once you have programmed security settings or home automation, BabyWare provides several ways to administer the Imperial system. You can control system functions directly from the BabyWare Main Window. You can also view the Events List to monitor system activity. At any time, you can back up or restore security and home automation programming using the BabyWare backup Wizard. These basic administration options are explained in the following sections:

- Monitoring Security Events
- Monitoring Home Automation
- The Events List
- Back up BabyWare Programming

Monitoring Security Events

Icons in the Manual Controls and Status column allow you to view the current status of a system component from the BabyWare Main Window. You can view the status of a system component by hovering over any icon in the Manual Controls and Status column.

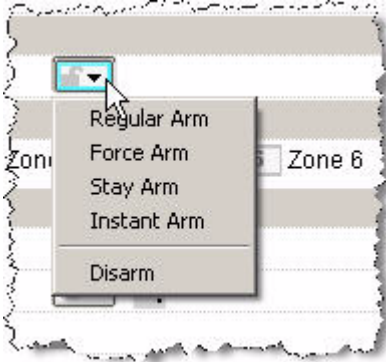
Figure 30 - Manual Controls and Status Column



From the Manual Controls and Status column, you can also manually arm and disarm system components as well as lock and unlock doors with a simple point and click.

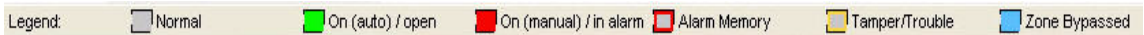
The following figure shows the commands that appear when you click the lock icon of an area in the Main Window.

Figure 31 - Lock Icon Commands



Icons in the Manual Controls and Status column change color according to their status. The following figure shows the legend for monitoring manual controls in your security system.

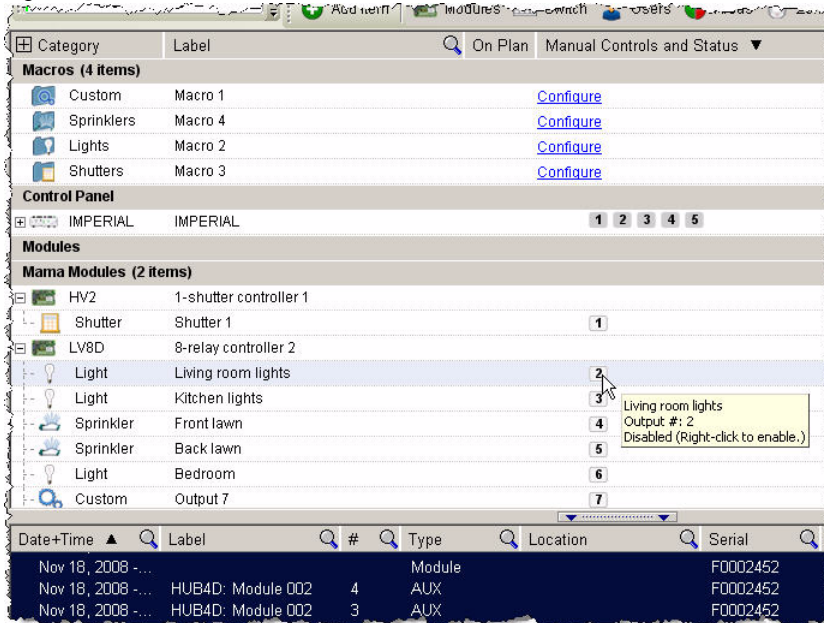
Figure 32 - Manual Controls Legend



Monitoring Home Automation

Icons in the BabyWare Main Window allow you to manually activate or deactivate outputs or macros in the MAMA system. You can click an icon to activate an output. Right-clicking an icon provides you with a menu of options for activating the output.

Figure 33 - MAMA Manual Controls



Icons in the Manual Controls and Status column change color according to their status. The following figure shows the legend for monitoring manual controls in your MAMA system.

Figure 34 - MAMA Manual Controls Legend




The Events List

Events are reportable occurrences within your Imperial system. The Events List appears at the bottom of the Main Window and displays both live and stored events.

Figure 35 - Events List

Date+Time	#	Name	Type	Description	Trigger	User Label
Sep 11, 2008 - 15:22	3	Basement	Zone	Zone Opened	Partition: Main Floor	
Sep 11, 2008 - 15:22	3	Basement	Zone	Zone OK	Partition: Main Floor	
Sep 11, 2008 - 15:22	3	Basement	Zone	Zone Opened	Partition: Main Floor	
Sep 11, 2008 - 15:22	4	Bath Room	Zone	Zone OK	Partition: Main Floor	
Sep 11, 2008 - 15:22	4	Bath Room	Zone	Zone Opened	Partition: Main Floor	
Sep 11, 2008 - 15:22	1	Kitchen	Zone	Zone Opened	Partition: Main Floor	
Sep 11, 2008 - 15:22	1	Kitchen	Zone	Zone OK	Partition: Main Floor	
Sep 11, 2008 - 15:22	1	Kitchen	Zone	Zone Opened	Partition: Main Floor	
Sep 11, 2008 - 15:22	2	Living Room	Zone	Zone Opened	Partition: Main Floor	

Sorting Events

You can sort information in the Events List by clicking any of the heading buttons. You can also search for information by clicking the  button in any of the headings and typing the information you want to find.

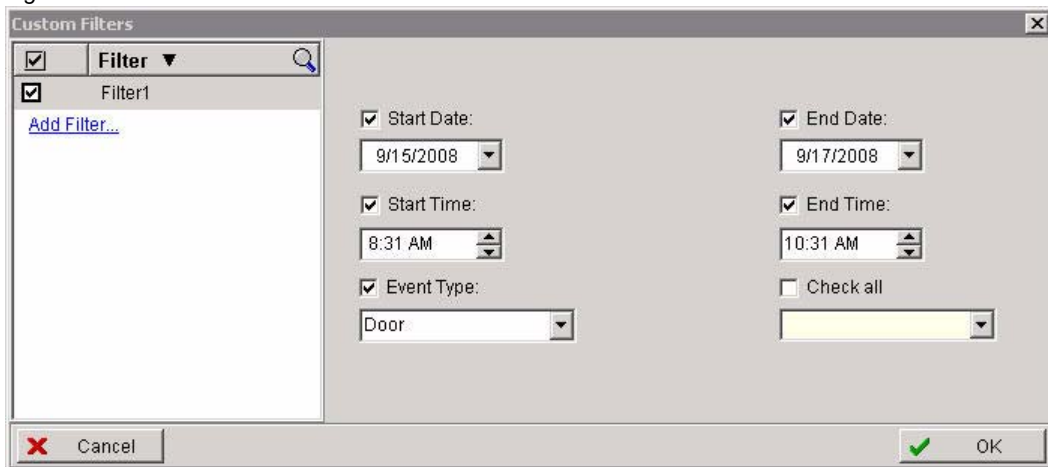
Filtering Events

BabyWare allows you to filter the information that appears in the Events List. You can view, for example, the door events or zone events that occurred between specified dates and times.

To filter events, do the following:

1. From the main menu, click **Events**, then select **Apply Filters**. The Custom Filters window appears.

Figure 36 - Custom Filters Window



2. Do one or all of the following

- To filter by date, click the check boxes by Start Date and End Date. Then, from the drop-down menus, select a start date and end date.
 - To filter by time, click the check boxes by Start Time and End Time. Then, use the buttons to set a time range.
 - To filter by event type, click the check box by Event Type. Then, from the drop-down menu, select the event type you want to view.
3. Create as many filter views as you like by clicking **Add Filter** and repeating this procedure. Then click **Ok**. The Events List displays only the events within the parameters you defined.

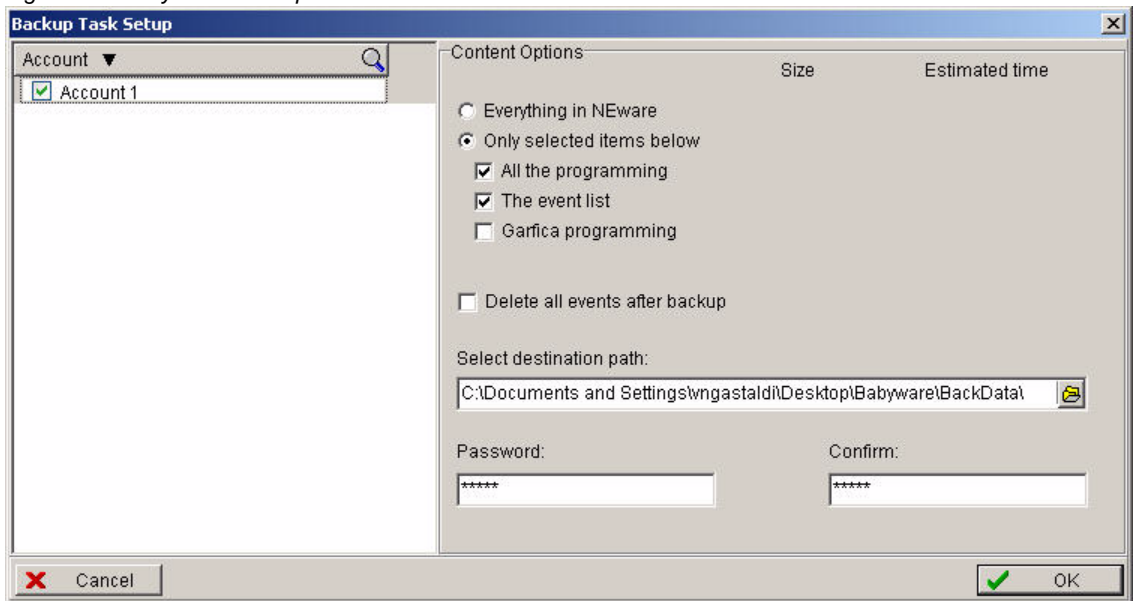
Backing up BabyWare programming


You can use the BabyWare Backup Wizard to back up and restore your security system programming and safeguard against a data loss or corruption incident.

To back up BabyWare programming

1. From the main menu, click **File**, then select **Backup Wizard**. The BabyWare Backup Wizard appears.
2. Click **Backup**. The Backup Task Window appears. Select an account in the left pane by clicking the check box next to an account name. Then use the radio buttons and check boxes in the right pane to specify the content you want to protect.

Figure 37 - BabyWare Backup Task Window



3. In the **Select destination path** field, type a destination folder for your data. You can also click the  button to browse for a folder.
4. Enter a password that you will use to restore saved data. Then reenter the password. Then click **Ok**. A progress window appears as the data is backed up to your destination folder.

To restore backed-up data


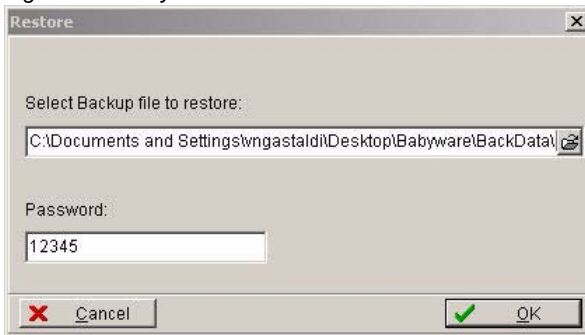
1. From the main menu, click **File**, then select **Backup Wizard**. The BabyWare Backup Wizard appears.
2. Click **Restore**. The Restore window appears. Browse for your backup file by clicking the  button and selecting your backup destination folder.

Figure 38 - BabyWare Restore Window



3. Enter the password you specified when backing up BabyWare programming. Then click **Ok**. A progress window appears as data is restored to the system.

Appendix A: BabyWare Menus and Commands

This appendix provides an overview of BabyWare menus and commands.

Main Menu

The following tables describe the commands in the main menu of the Main Window.

File

Command	Description
New Account	Not yet implemented
Open Account	Opens the Accounts window
Save Account	Saves the current open account
Close Account	Not yet implemented
Print	Opens the Print window
Log Off	Not yet implemented
Backup Wizard	Opens backup and restore Wizard
Exit	Closes BabyWare

View

Command	Description
Modules	Adds or removes view of Modules from the Main Window
Users	Adds or removes view of Users from the Main Window
Areas	Adds or removes the view of Areas from the Main Window
Zones	Adds or removes the view of Zones from the Main Window
Doors	Adds or removes the view of Doors from the Main Window
Output	Adds or removes view of Outputs from the Main Window
Macro	Adds or removes view of Macros from the Main Window
Schedules	Adds or removes view of Schedules from the Main Window
Preferences	Not yet implemented

Tools

Command	Description
Graphica	Not yet implemented
Floor Plan	Not yet implemented
Translate	Opens the Language Translation window

Event

Command	Description
Load System Events	Not yet implemented
Delete All Events	Deletes all events from the Events List
Show Deleted Events	Opens the Deleted Events window
Print Selected Events	Opens the Print window
Apply Filter	Opens the Custom Filters window

Communication










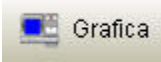
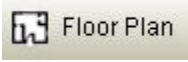
Command	Description
Connect	Connects the open account to the control panel
Disconnect	Disconnects the open account from the control panel
Login Name / Password	Allows you to change the Login Name and Login Password of the open account.
Settings	Opens the connection Settings window
Monitoring	Allows you to Start and Stop live monitoring
Event	Not yet implemented
Refresh	Refreshes monitoring status and detects new modules connected to the system.
Send	Not yet implemented

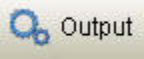
Help

Command	Description
Send Comment	Not yet implemented
About	Displays BabyWare version information

BabyWare Toolbar

The following table describes the commands for buttons on the BabyWare toolbar.

Button	Command	Description
 Account	Account	Opens the Accounts window
 Save	Save	Saves the state of the current account
 Print	Print	Opens the Print window
 Trash	Trash	Opens a window that allows you to search for and restore deleted modules.
 Connected to 10.10.1.221 ▾  Disconnected ▾	Connected / Disconnected	Connects or disconnects the link between an open account and the control panel
 Refresh	Refresh	Refreshes monitoring status and detects new modules connected to the system.
 Send	Send	Sends programming from BabyWare to the control panel.
 Receive	Receive	Allows BabyWare to receive programming from the control panel.
 Grafica	Graphica	Not yet implemented
 Floor Plan	Floor Plan	Not yet implemented

 Translate	Translate	Opens the Language Translation window
 Add Item	Add Item	Opens the Items Selection window
 15/512 Modules	Module Detection Field	Displays the number of modules used in the system. BabyWare supports up to 512 modules.
 Modules	Modules	Adds or removes view of Modules in the Main Window
 Switch	Switch	Adds or removes view of Switches in the Main Window
 Users	Users	Adds or removes view of Users in the Main Window
 Areas	Areas	Adds or removes view of Areas in the Main Window
 Zones	Zones	Adds or removes view of Zones in the Main Window
 Doors	Doors	Adds or removes view of Doors in the Main Window
 Output	Output	Adds or removes view of Outputs in the Main Window
 Macro	Macro	Adds or removes view of Macros in the Main Window

P  **R**  **D O X**[®]
S E C U R I T Y S Y S T E M S

Printed in Canada - 10/2008 PARADOX.COM BABYWARE-EQ00