

# Back to School @ Pyne Arts 2021-2022



# Welcome New Families!

---

## Kindergarten Open House

- Wednesday, September 11:00-2:00.

## CSA Open House PK-8

- Thursday, August 26 1:00-2:00

## Preschool Open Houses

Thursday, September 2

- 10:30-11:30 for AM Class
- 1:00-2:00 for PM Class

## Boo Hoo Breakfast

- Tuesday, September 7 9:30-10:15



# New Staff

ESL Teacher...

CSA 2-4 Teacher...

CSA 2-4 Para 1:1...

CSA PK Para 1:1

CSA Para K-1...

K-4 Para/SPED...

Tutor...

Tutor...

Jennifer Berger

Alexis Perna

Jonathan Martey

Amelie Lim

Jomara Ortega

Amanda Mujica

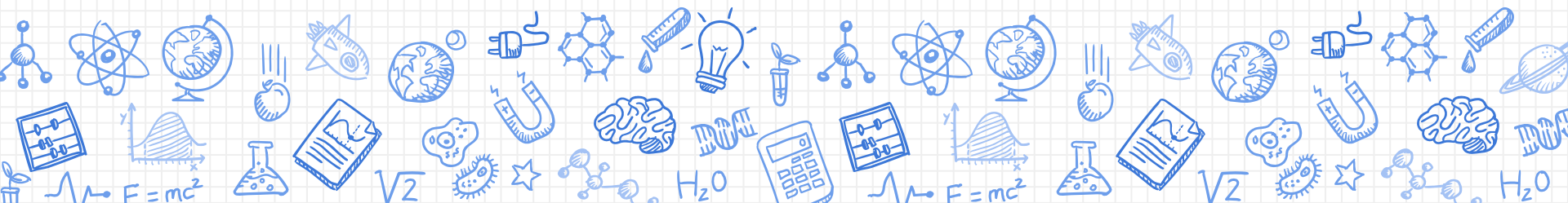
Shana Paleologos

Luis Hernandez

# Staff in New Roles

**Content Literacy Teacher...**  
**Grade 2 Para 1:1...**  
**Kimberly Bradley...**

**Danielle Miner**  
**Doreen Lemay**  
**Grades 5-8 SPED Teacher**



# Staff Meet & Greet

---

**Thursday, September 9**

**3:30-4:30 PM**

Families are invited to drop in during this time to visit their child's classroom and meet the teacher. All visitors must be masked indoors at all times. Visitors will be limited to immediate guardians, students, & siblings.

When your classroom visits are done, you are welcome to pick up a popsicle from the PTO in front of the school. We will also have PTO sign-ups and Banking at School sign-ups available.



# School Hours & Arrival Information

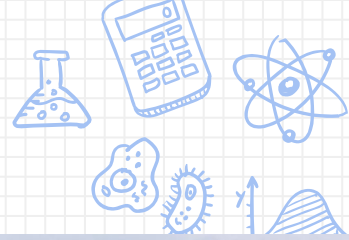
## Middle School Hours

- **8:40 AM** Middle School Drop Off (at Playground Stairs)
- **8:40-8:55 AM** Middle School Breakfast & Homeroom
- **8:55 AM** Instruction Begins- All students must be seated in period 1 class

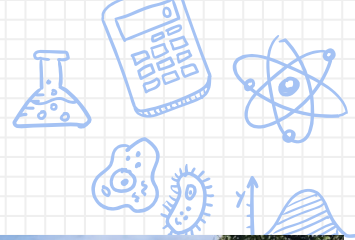
## Elementary School Hours

- **9:10 AM** Elementary Drop Off *\*Cars may pull up front after ALL buses have unloaded*
- **9:10-9:25 AM** Elementary Breakfast & Homeroom
- **9:25 AM** Instruction Begins- All students must be seated in class

# Morning Drop Off- Middle & CSA



# Morning Drop-Off- Elementary



**Grades 2-4**







# First Day of School

- ✘ Please make certain your child's teacher knows how s/he will be getting home on day 1 and all other school days. The teachers will be out front (elementary), in the playground (middle), and at the Stratham doors (CSA & small buses) on the first day of school before students are lined up and brought into class.
- ✘ Students who ride the bus in the morning will be directed to the appropriate place to meet their teachers.

# Technology Info

---

## Chromebooks

Students should return to school with their chromebooks and laptops. K-1 students will be issued a new Chromebook this fall and we will collect the old MacBooks. Grades 2 and up will bring their device home each night to charge.

## Clartouch Boards

We have 20 new Clartouch interactive screens that have been added to all of our instructional spaces that were without a SmartBoard!









# The Curriculum and The Accelerated Road Map


Phase 1: Diagnostic and Planning	Phase 2: Launch	Phase 3: Progress Monitoring	Phase 4: Reflection and Planning
Before the 1 <sup>st</sup> day of school 2021	September - October 2021	November 2021 - April 2022	May - June 2022

<b>Sense of Belonging</b> 		
	<b>ACCELERATION</b>	<b>REMEDIATION</b>
<b>Self-efficacy</b>	<ul style="list-style-type: none"> <li>Self-confidence and engagement increase.</li> <li>Academic progress is evident.</li> </ul>	<ul style="list-style-type: none"> <li>Students perceive they're in the "slow class," and self-confidence and engagement decrease.</li> <li>Backward movement leads to a sense of futility and lack of progress.</li> </ul>
<b>Basic skills</b>	<ul style="list-style-type: none"> <li>Skills are hand-picked just in time for new concepts.</li> <li>Students apply skills immediately.</li> </ul>	<ul style="list-style-type: none"> <li>Instruction attempts to reteach every missing skill.</li> <li>Skills are taught in isolation and not applied to current learning.</li> </ul>
<b>Prior knowledge</b>	<ul style="list-style-type: none"> <li>Key prior knowledge is provided ahead of time, enabling students to connect to new information.</li> </ul>	<ul style="list-style-type: none"> <li>Typically, does not introduce prior knowledge that connects to new learning.</li> </ul>
<b>Relevance</b>	<ul style="list-style-type: none"> <li>Treats relevance as critical component to student motivation and memory.</li> </ul>	<ul style="list-style-type: none"> <li>Relevance is not seen as a priority.</li> </ul>
<b>Connection to core class</b>	<ul style="list-style-type: none"> <li>Instruction is connected to core class; ongoing collaboration is emphasized.</li> </ul>	<ul style="list-style-type: none"> <li>Instruction is typically isolated from core class.</li> </ul>
<b>Pacing and direction</b>	<ul style="list-style-type: none"> <li>Active, fast-paced, hands-on.</li> <li>Forward movement; goal is for students to learn on time with peers.</li> </ul>	<ul style="list-style-type: none"> <li>Passive, with focus on worksheets or basic software programs.</li> <li>Backward movement; goal is for students to "catch up" to peers.</li> </ul>

**Monitor Understanding**



**Strong Instruction**



# Health and Safety Info

---

## Testing

- ✘ Free weekly COVID screenings
- ✘ Free rapid testing of symptomatic students
- ✘ Close Contact Updates

## Masking

- ✘ Mask wearing indoors at all times unless eating
- ✘ Seating 3 feet apart as often as possible
- ✘ Masks on buses (but no close contacts)

## Sanitizing

- ✘ Daily fogging
- ✘ Frequent hand washing and hand sanitizing
- ✘ Frequent disinfecting of high-touch areas
- ✘ Windows open and air purifiers on



# TESTING SERVICES INCLUDED IN COVID-19 TESTING PROGRAM

## Symptomatic Testing

- For when individuals **present symptoms while at school**; individuals should not go to school if experiencing symptoms while at home.
- Samples are collected at school using the **BinaxNOW rapid antigen test**.
- Those testing **negative with isolated/mild symptoms can stay** in school.

## “Test and Stay”

*Close contact testing*

- For when individuals are in close contact with a COVID-19 positive individual while at school.
- Samples are collected at school **using the BinaxNOW rapid antigen test**.
- Tests are **administered daily for at least five days** from the date of exposure.

## Routine COVID Pooled Testing

- **Routine Pooled Testing and School-Based Follow-Up Testing:** samples are collected at school; if a pool is positive, follow-up testing at school with **either BinaxNOW and/or individual PCR testing as necessary**.
- **Routine Pooled Testing and Lab-Based Follow-Up Testing:** samples are collected; if a pool is positive, **individual follow-up testing occurs at the lab**, without a second sample collection.

# COVID 19 Symptoms- Updated

---

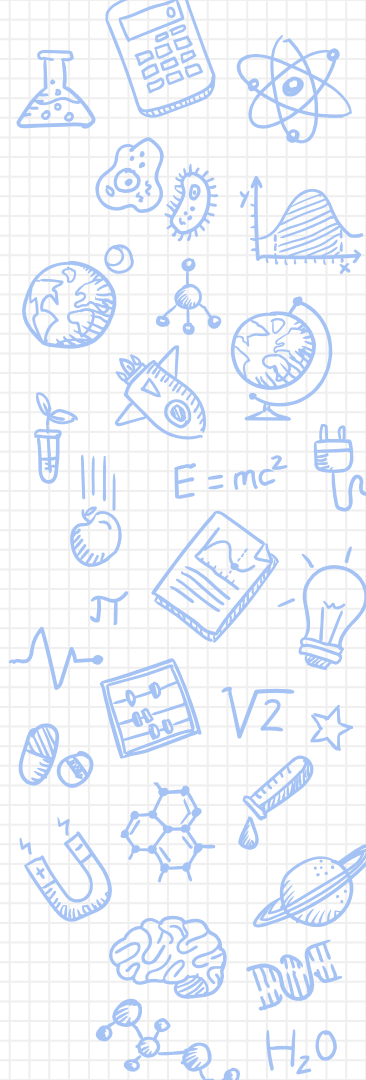
- **Fever (100.0° Fahrenheit or higher), chills, or shaking chills**
- **Difficulty breathing or shortness of breath**
- **New loss of taste or smell**
- **Muscle aches or body aches**
- **Cough (not due to other known cause, such as chronic cough)**
- Sore throat, when in combination with other symptoms
- Nausea, vomiting, or diarrhea when in combination with other symptoms
- Headache when in combination with other symptoms
- Fatigue, when in combination with other symptoms
- Nasal congestion or runny nose (not due to other known causes, such as allergies) when in combination with other symptoms



# Medication Information

---

Any students who have emergency medications (Epi-Pens, inhalers, etc.) or who will receive medication in school must have a medication order from the prescribing physician AND a completed consent form from the City Health Department. Forms and medication can be dropped off to the school nurse on the first day of school. The school nurse cannot administer ANY medications without a physician's order, including over-the-counter medications. Please make sure that the school nurse is provided refills in advance of any medication supply running out.





# Hydration Stations

---



New water bottles and bottle refilling stations!

A decorative border of various science-related icons surrounds the page. In the top-left corner, there is a Bohr-style atomic model, a beaker with a chemical reaction, the chemical formula H<sub>2</sub>O, a square root symbol √2, a hand holding a pencil, a globe, a rocket, and a molecular structure. In the top-right corner, there is a calculator, a hexagonal molecular structure, a globe, a power plug, a book, a cell diagram, a star, and a test tube with a plant growing from it. In the bottom-left corner, there is a lightbulb, a brain, a molecular structure, an abacus, a graph with axes labeled x and y, a test tube with a drop, and the equation E=mc<sup>2</sup>. In the bottom-right corner, there is a magnet, a hexagonal molecular structure, a test tube with a drop, a planet, a rocket, a DNA helix, a star, a square root symbol √2, a molecular structure, and the chemical formula H<sub>2</sub>O.

# PTO and School Activities

---

Fundraisers, arts programs, field trips, PTO events, sports, enrichment programming

# School Supplies

## Summer Math & Reading





LOWELL  
PUBLIC SCHOOLS

LPS Block Party  
Welcome Back to School

Tuesday, August 24, 11AM - 1:30PM

Location:  
John F. Kennedy Civic Center  
50 Arcand Drive  
Lowell, MA 01852

FREE Food, Entertainment and Backpacks  
First come, first served.

[www.lowell.k12.ma.us](http://www.lowell.k12.ma.us)

# Backpack Giveaway!!!



---

Visit Us  
Tomorrow @  
City Hall  
11:00-1:30



# New Curricular Programs & Materials!



## Heggarty Phonemic Awareness

New phonemic awareness program for K-2 focusing on sounds.

## LetterLand Phonics

Digital and print-based phonics program that uses a multisensory approach to teaching phonics K-2.

## Inquiry Journeys

Social studies curriculum for grades K-5. Implementation this year for 3-5, next year for K-2.

## Project Read

Previously introduced, Project Read is a multisensory reading program that will be utilized for CSA 5-8.

## Quaver & Music

New keyboards, instruments, and digital learning tools for making music

## Keys to Beginning Reading

K & 1 teachers will participate in 4 days of professional development

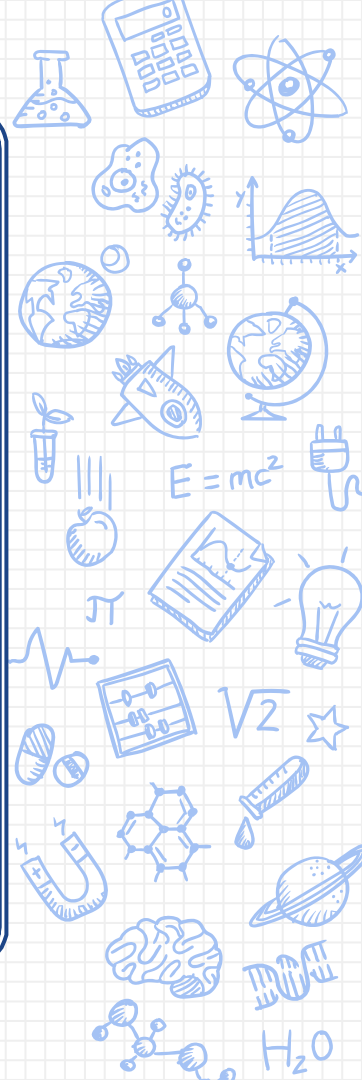
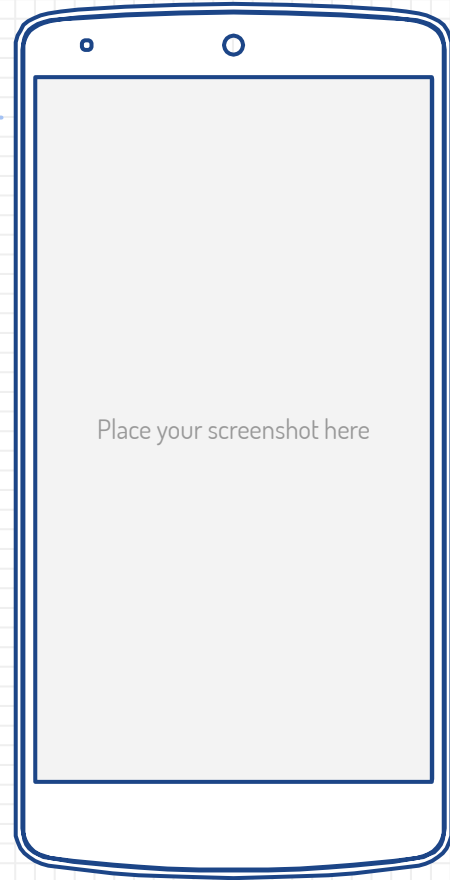
K-8



Coming in November!



Download Schoolology to keep up with all the latest school news! Different clubs and activities will have Schoolology groups and middle school students and parents can track grades throughout the term in Schoolology. Look for the handout with your code!



# Follow us on Social Media!



Twitter:

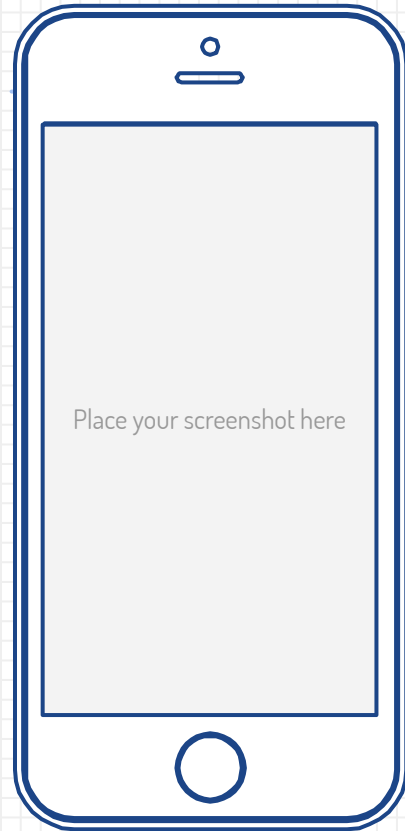
@PyneArtsLPS

Facebook:

Pyne Arts Magnet School

Instagram:

pyneartsmagnetschool





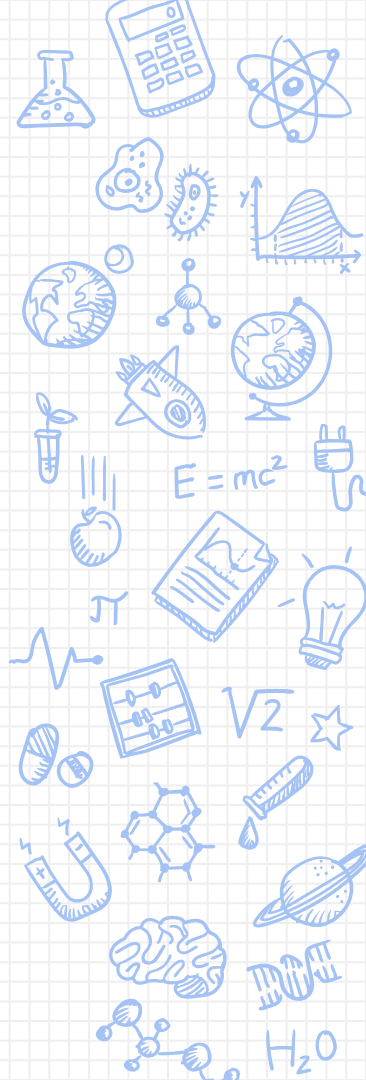
# Help our Friends The Freeman Family

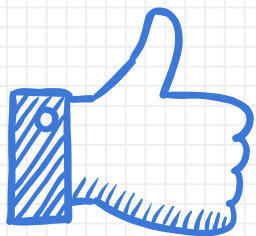
A fire in the house next door spread to their home this past June and destroyed everything. They had less than 15 minutes to grab their personal belongings and evacuate. Please help us give the Freeman Family a new start in a new home.



Now accepting donations for:

- New kitchen items
- New bedding
- Cleaning items (broom, mop, Swiffer, toilet brushes, etc.)
- Gift Cards (Target, Walmart, Bed, Bath, & Beyond, Marshalls, etc.)
- Cash





# THANKS!

## Any questions?

You can find me at

✕ [wcrocker-roberge@lowell.k12.ma.us](mailto:wcrocker-roberge@lowell.k12.ma.us)