

Bandon Road Corridor Finalised

Project update

Roads and Maritime Services | July 2019



Aerial of Bandon Road and Vineyard Station facing east

The NSW Government is planning for the future by finalising the new Bandon Road corridor between Richmond Road, Marsden Park and Windsor Road, Vineyard. Bandon Road is part of the North West Growth Centre Road Network Strategy.

The Bandon Road corridor would connect Richmond Road, Marsden Park to Windsor Road, Vineyard. This corridor would deliver an additional road connection between Richmond Road and Windsor Road providing alternative access across the North West Growth Area and reducing traffic congestion within Riverstone.

A new Bandon Road corridor is one of a number of projects in planning that are part of the North West Growth Centre Road Network Strategy. You can find a copy of the North West Growth Centre Road Network Strategy map within this update.

The Bandon Road corridor has now been finalised – please see the map over the page. Roads and Maritime Services commenced consultation with the community on the preferred corridor for Bandon Road in August 2016. Finalising the corridor is the result of ongoing consultation with community members and other stakeholders over several years.

This finalised corridor has been sent to NSW Department of Planning, Industry and Environment (DPIE) to include in the precinct plans for Marsden Park North, Riverstone West, Riverstone and Vineyard Precincts.

North West Growth Centre Road Network Strategy – where are we up to?

In 2014, the NSW Government published the road network strategy to support the forecast growth in the North West Growth Area. Over the next ten years, 33,000 homes will be provided in the area and once fully developed, the area will be home to around 250,000 people.

Finalising the Bandon Road corridor is an important part of the North West Growth Centre Road Network Strategy.

Schofields Road upgrade – completed

The NSW Government funded the \$340 million upgrade of Schofields Road between Windsor Road and Richmond Road. Schofields Road has been upgraded to form a major east-west link from Rouse Hill to Marsden Park.

The work was delivered in three stages, with the final stage open to traffic in June 2018.

Richmond Road upgrade – ongoing

Richmond Road between North of Bells Creek Bridge to Elara Boulevard has been upgraded to a two lane road in each direction, with the capacity to be widened to three lanes in the future.

The NSW DPIE has granted Special Infrastructure Contribution (SIC) funding for Roads and Maritime to undertake planning of a future upgrade of Richmond Road from Elara Boulevard to Heritage Road, Marsden Park.

Townson Road and Burdekin Road – planning

The NSW DPIE has granted SIC funding for Roads and Maritime to undertake the planning and concept design of these roads.

Townson Road is planned to be widened and extended to Burdekin Road over the railway line.

Garfield Road East and West upgrades – planning

The NSW DPIE has granted SIC funding for Roads and Maritime to undertake the planning and concept design of Garfield Road East (from Piccadilly Street, Riverstone, to Windsor Road, Box Hill) and Garfield Road West (from Richmond Road, Marsden Park to Denmark Road, Riverstone) to provide safe and efficient access to the surrounding road network.

The project will involve planning for the future upgrade.

Garfield Road central – planning

During consultation in 2013 and 2014, Roads and Maritime sought community feedback on options for the railway level crossing. The community highlighted their concerns about the current traffic congestion in Riverstone and heavy vehicles travelling through the town centre. Roads and Maritime also received feedback about the location of an overpass and impacts on community amenity, local businesses, schools and property.

Further planning of Garfield Road central is subject to funding availability and Roads and Maritime will undertake community consultation at that time.

Denmark Link Road – planning

Denmark Link Road is a proposed new link road between Garfield Road West, Riverstone and the Westminster Street Bridge, Schofields. This new link road would alleviate traffic congestion along Garfield Road around the railway level crossing at Riverstone. Light vehicles would have an alternate local connection to cross the Richmond railway line.

Roads and Maritime is continuing planning and field investigation work to inform a strategic design.

Outer Sydney Orbital – planning

The NSW Government is planning for the long term transport needs of Western Sydney by identifying and protecting a corridor of land for future transport infrastructure to link the Central Coast with the Illawarra via Western Sydney.

The Orbital will connect growth areas in the North West and South West with the Western Sydney Airport.

Work on the Outer Sydney Orbital is being led by Transport for NSW (TfNSW). TfNSW are working closely with other government agencies.

Please contact TfNSW if you have any questions about the Outer Sydney Orbital on **1800 837 511** or corridors@transport.nsw.gov.au.

Finalisation of the Bandon Road corridor





Intersection of Bandon Road and Windsor Road facing west

Benefits of the new Bandon Road



Better and more reliable trips
for people, business and freight

By creating a new connection between Windsor Road and Richmond Road via Vineyard Station, Bandon Road will create an alternate route to using the Riverstone town centre.



Connecting communities

Bandon Road will connect the new planned precincts in the North West Growth Area to Vineyard station along with Richmond Road and Windsor Road.



Catering for Sydney's growth

By 2056, around 250,000 people will call the North West Growth Area home. The new Bandon Road supports this significant growth.



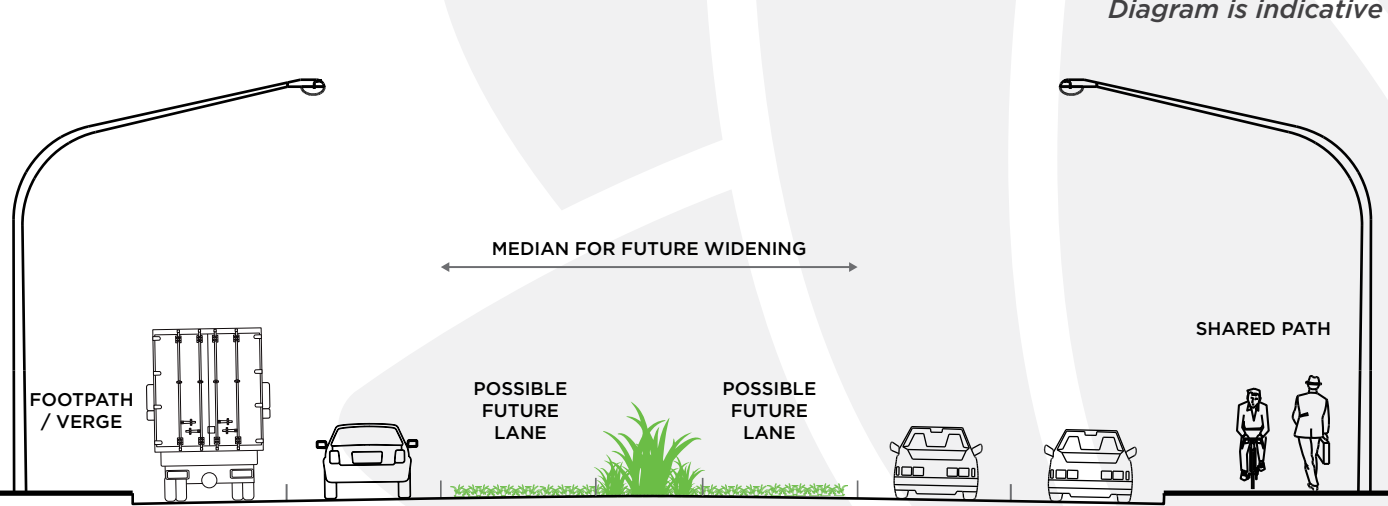
Improve safety at rail level crossings

The new Bandon Road will go under the Richmond railway line. This would improve safety by removing any need for a level rail crossing in Vineyard.

Features of the new Bandon Road

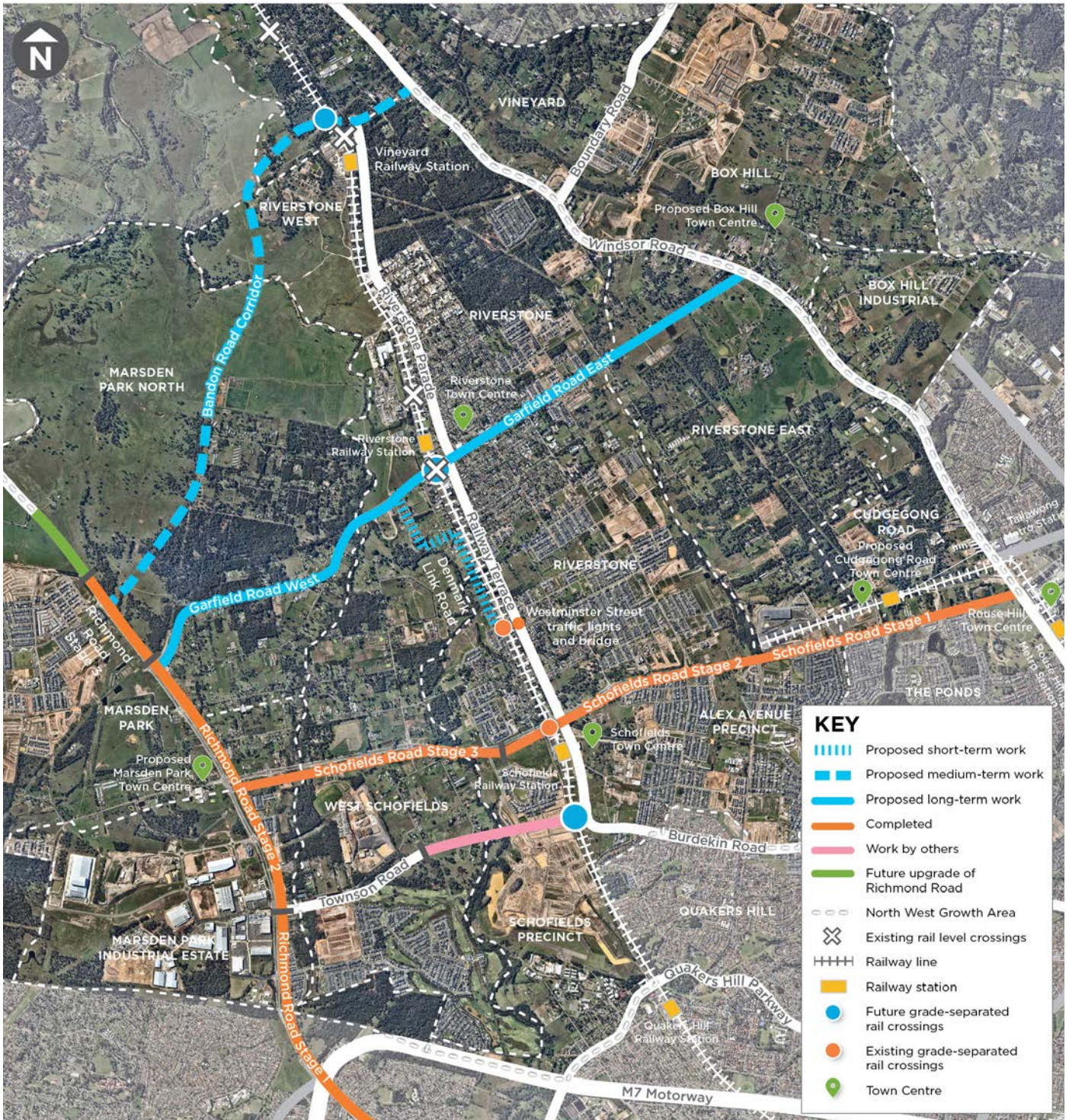
- A new four lane divided road including a central median to allow for future widening
- Flood plain storage excavation areas to compensate for embankments required for Bandon Road
- An upgrade and realignment of the existing flood evacuation route on Wallace Road.

Typical cross section



North West Growth Centre Road Network Strategy

Updated June 2019



Interactive portal

Check out our **interactive portal** at www.rms.nsw.gov.au/nwgc to find out more about the North West Growth Centre Road Network Strategy and submit any questions or comments you have.

Work completed to date

Roads and Maritime has finalised the Bandon Road corridor. This means the corridor will be reserved for a road to be built at some point in the future.

We have also identified where we will need space around the corridor for floodwaters and asked the NSW DPIE to include these areas in their precinct plans.

Further development of the Bandon Road corridor is subject to funding availability. Currently funding is not allocated for design and construction work.

Community and stakeholder input has been a key component in developing the Bandon Road corridor.

Community Information Sessions

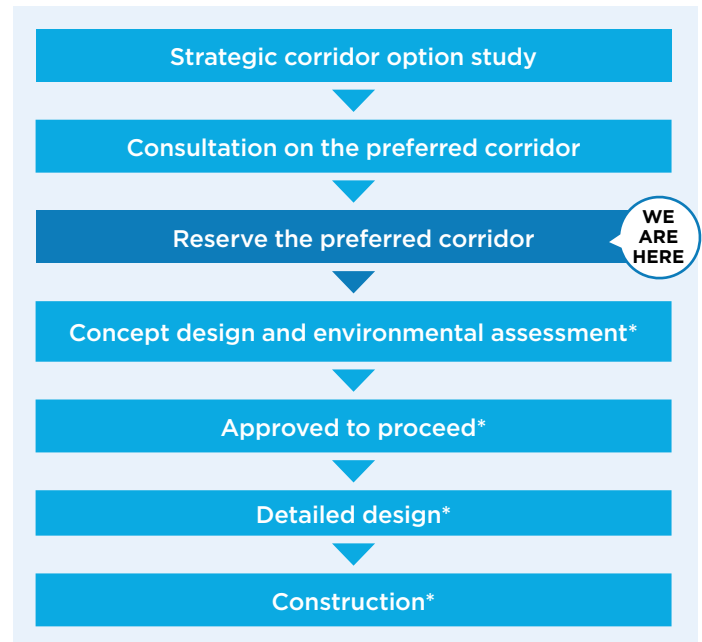
Roads and Maritime is seeking community feedback to help inform our future road plans in the North West Growth Area. We will host three community information sessions where you can ask the project teams questions and seek further information about proposed road upgrades. A formal presentation will not be given so please feel free to drop in any time at one of the following sessions:

- **Saturday 27 July** 2019, Schofields Community Centre, 65 Railway Terrace, Schofields between **10am** and **2pm**
- **Tuesday 30 July** 2019, Schofields Community Centre, 65 Railway Terrace, Schofields between **4pm** and **7pm**
- **Thursday 1 August** 2019, Riverstone Sports Centre, 15 Hamilton Street, Riverstone between **4pm** and **7pm**

If you are unable to attend one of the information sessions, you can contact us to discuss or arrange another time that is suitable to meet. To join the mailing list please contact the project team (see details adjacent).

What are the next steps?

Subject to funding availability, we will carry out concept design and environmental assessment in the future.



*Subject to funding availability

Contact us

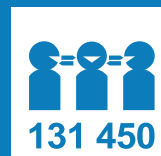
If you have any questions please contact:

 1300 367 561

 NWGC@rms.nsw.gov.au

 www.rms.nsw.gov.au/bandonroad

 North West Growth Centre
Roads and Maritime Services
PO Box 973 Parramatta CBD NSW 2124



131 450

If you need help understanding this information, please contact the Translating and Interpreting Service on 131 450 and ask them to call us on 1300 367 561.



July 2019
RMS 19.1266

Privacy Roads and Maritime Services ("RMS") is subject to the Privacy and Personal Information Protection Act 1998 ("PIIP Act") which requires that we comply with the Information Privacy Principles set out in the PIIP Act. All information in correspondence is collected for the sole purpose of delivering this project. The information received, including names and addresses of respondents, may be published in subsequent documents unless a clear indication is given in the correspondence that all or part of that information is not to be published. Otherwise RMS will only disclose your personal information, without your consent, if authorised by the law. Your personal information will be held by RMS at 27 Argyle Street, Parramatta NSW 2124. You have the right to access and correct the information if you believe that it is incorrect.