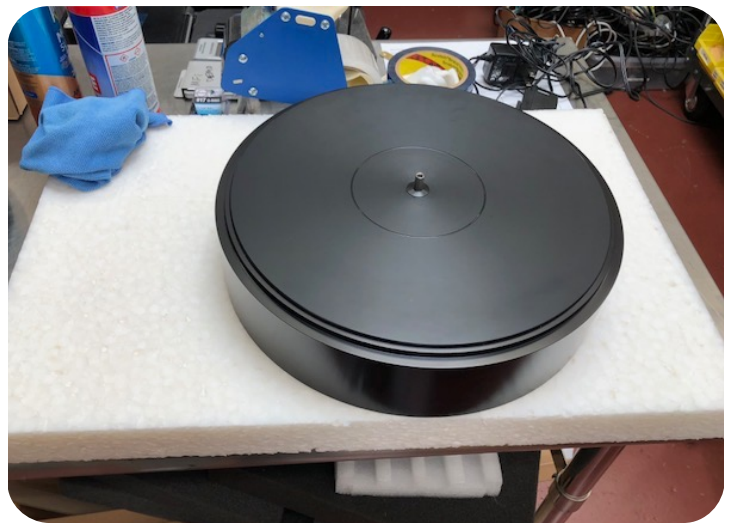


Basic AMG Viella 12 Assembly Instructions

Familiarize yourself with this document in its entirety before beginning assembly. First, make sure that you've created a large, clean and level work space in which to set up your turntable. Use the foam packaging material to rest the platter. Because of the weight of the turntable, make sure that you're setting out the turntable either where the turntable will be in the system or in very close proximity.

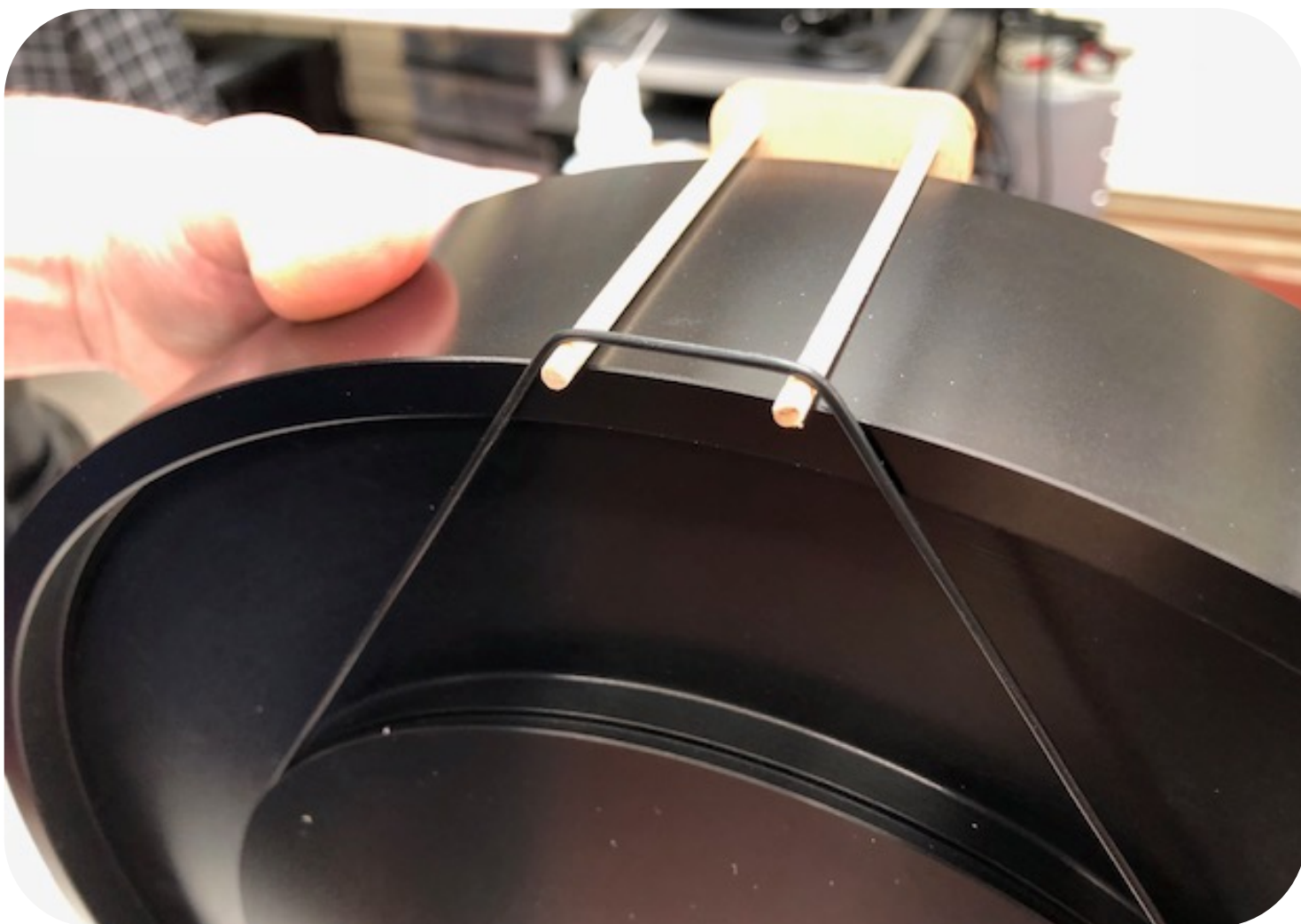
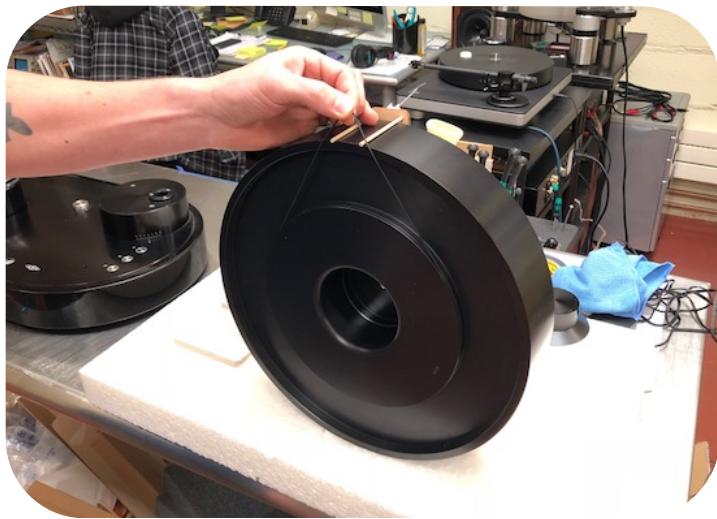
Before installing the belt and platter you will want to level the turntable using the 3 adjustable spike feet and built in bubble level. Use the provided 3mm tool to adjust the spikes to level the turntable plinth. Please note that you will not be able to access the leftmost spike after the platter is installed.



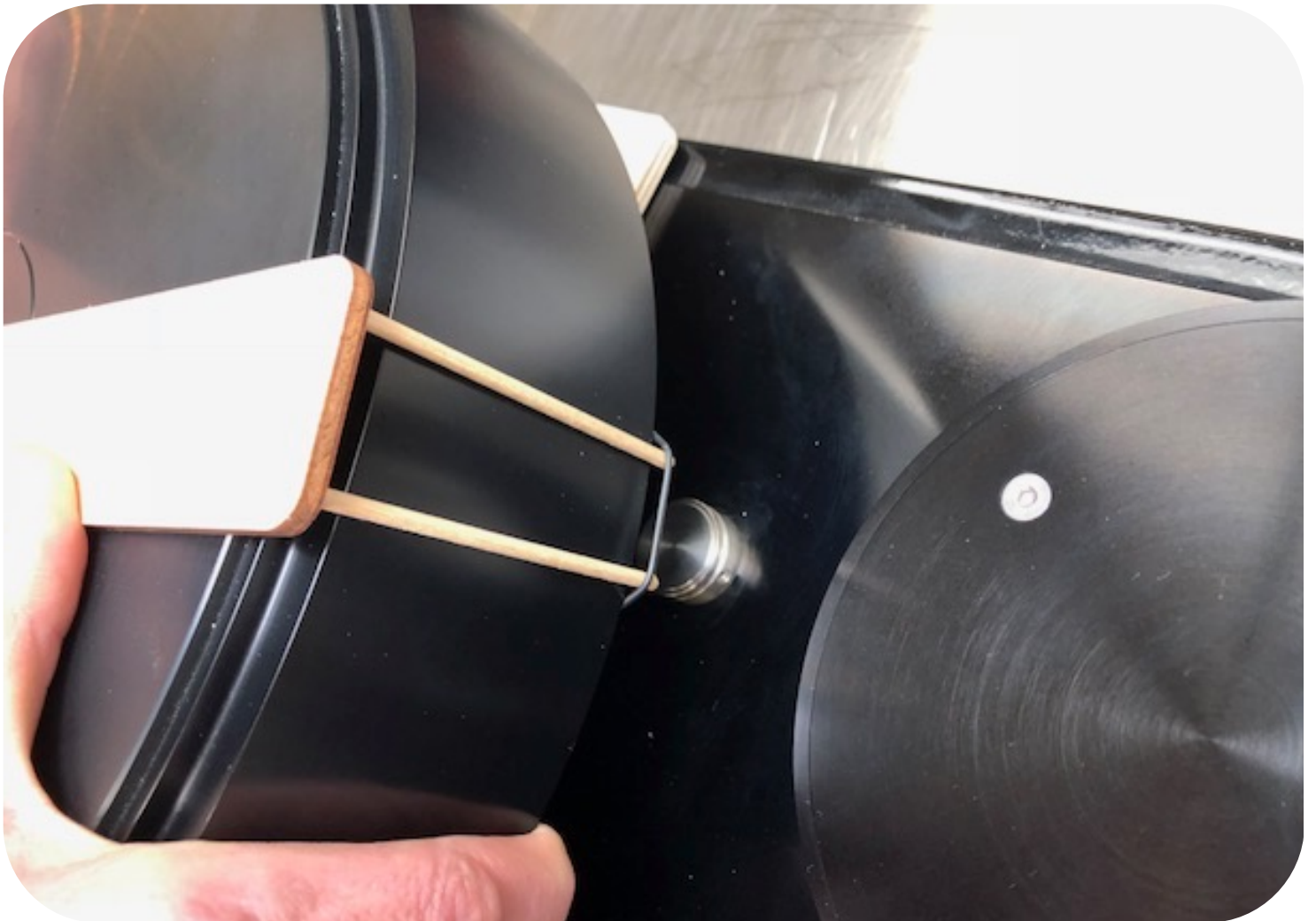
Get all the tools you'll need to properly set up the platter: two shims, belt mounting tool (BMT) and belt. Place the BMT over the platter spindle through the hole on the on the BMT with the posts on BMT facing downwards over the edge of the platter.

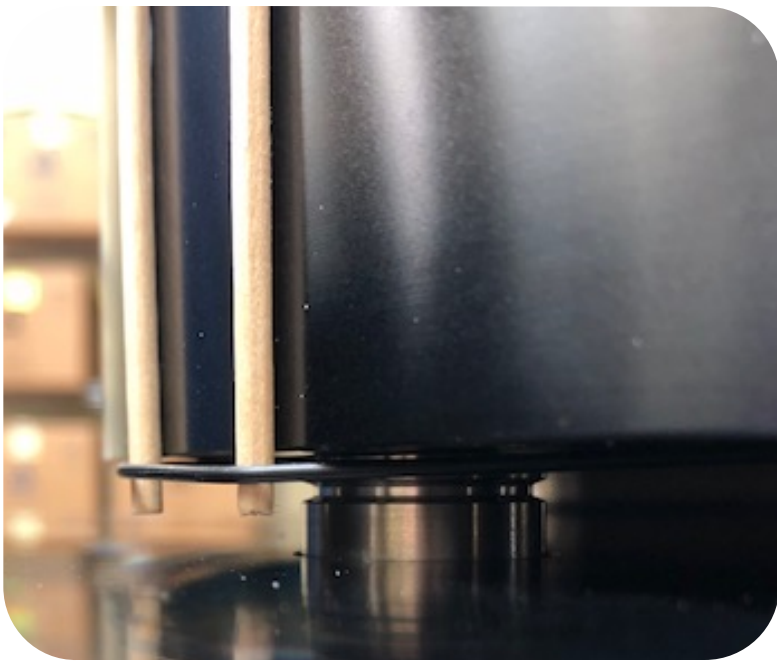


Carefully place the platter onto its side with the BMT's posts at the top. While holding it in place with one hand, carefully loop the belt around the platter pulley and then over the two posts on the BMT. See image to the left and at bottom.



Set up shims laterally on the Viella table at both the 12 o'clock and 6 o'clock positions. Gently pick up the platter bracing the BMT with your right thumb - the two posts should be at the 2 o'clock position. You'll see that the motor pulley is positioned at that same 2 o'clock on the Viella plinth. Since the bearing is completely enclosed, no lubricant is needed on the bearing.

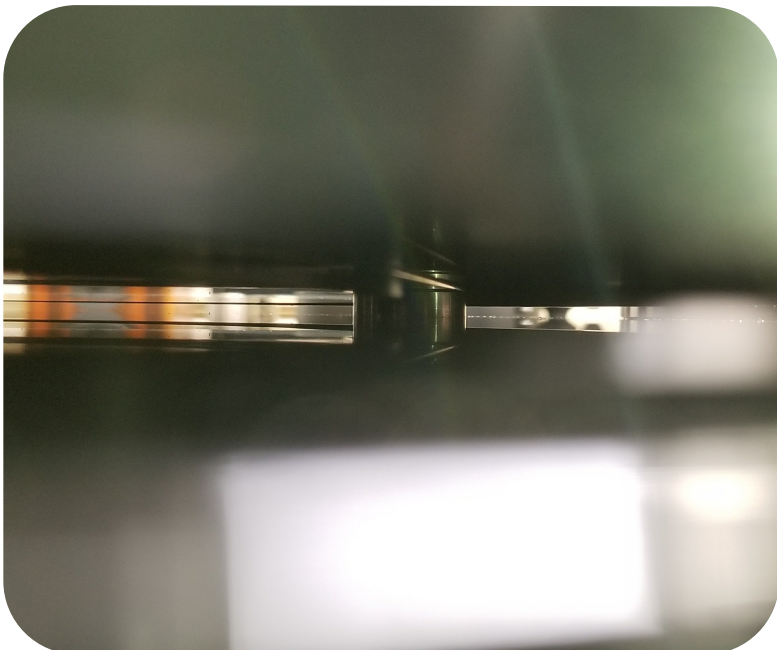




Move the platter over the bearing and slowly lower the platter and position into place. The tolerance between the bearing and the cored center of the platter is extremely tight. Gently rock the platter downwards until the platter is resting on the shims, at the same time making sure that the belt is in the proper position to loop around the motor pulley. The motor pulley has a groove which the belt will sit within. After the platter is set in place, slowly pull the BMT up and off the platter to disengage the belt. The belt will snap towards the motor pulley but likely won't seat into place until after the platter is in its final position with shims removed - optionally, a 1.5mm hex tool can be utilized to push the belt into place in the motor pulley's groove. Pull the shims away from the platter - be careful and watch your fingers, they can easily get pinched. Again, gently rock the platter and apply some downward force to seat the platter into its final position. Confirm if the belt is seated and make sure it hasn't fallen off.



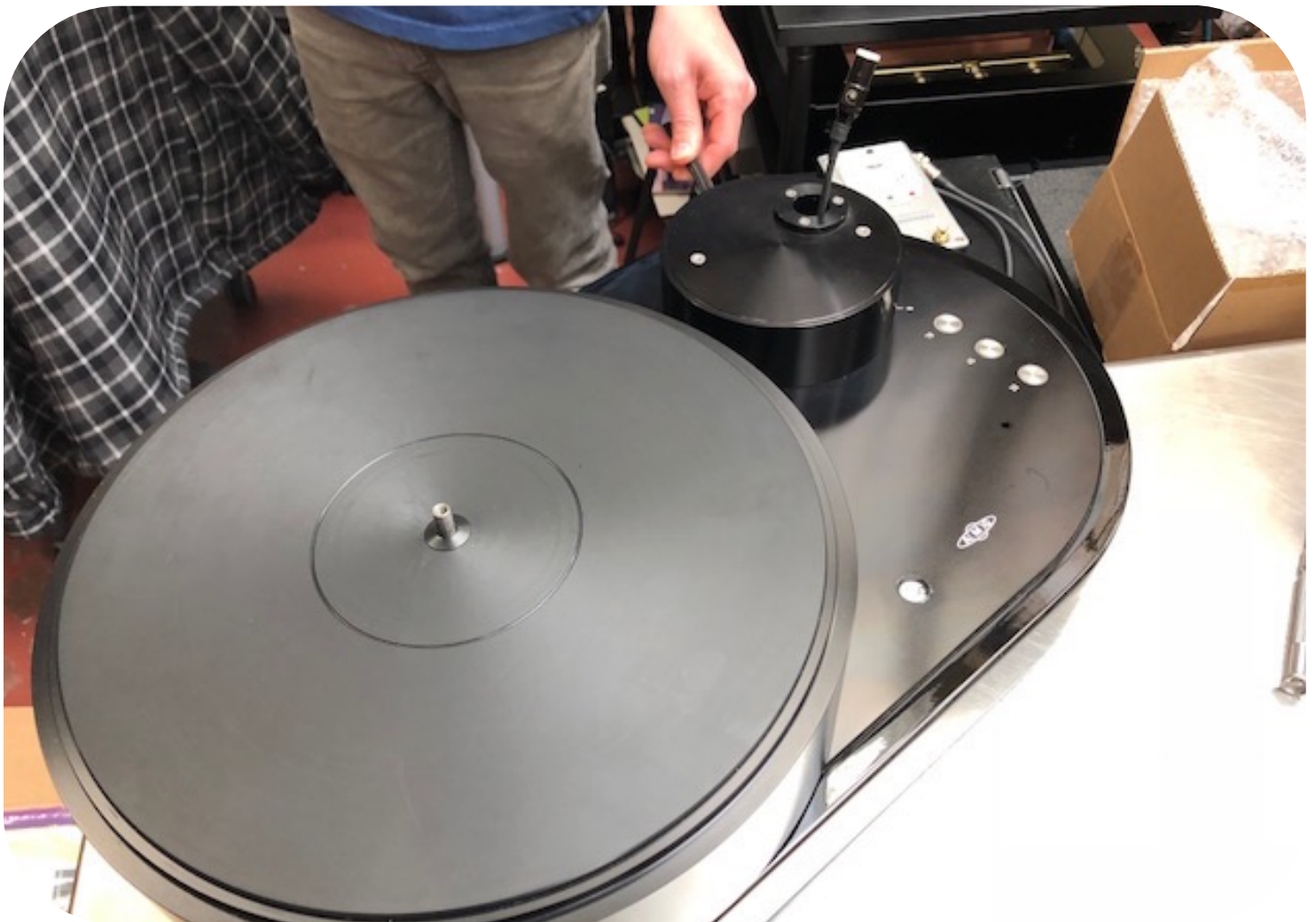
At this point there should be an even gap of approximately 2.5mm between the bottom edge of the platter and the top of the plinth. After confirming this, slowly rotate the platter by hand about a half turn to allow the belt to slide up and set itself in the groove on the motor pulley. If you look very closely through the gap at the bottom of the platter you can confirm if the belt is seated and make sure it hasn't fallen off (pictured below). If you notice the belt has slipped off, then repeat the belt mounting procedure.



Once the belt and platter are properly installed, plug in the turntable's power supply and select 33 rpm as a final test to ensure the belt is properly mounted and the platter properly seated on the bearing. If the platter doesn't turn, then repeat the belt mounting steps. If the platter wobbles while turning, it is likely not seated all the way onto the bearing, and more downward force and side to side rocking of the platter is needed to fully seated. .



You'll notice a slot on the edge of the plinth beneath the arm-board. Move this corner of turntable towards the edge of the workspace, this will allow you access underneath the table to feed the tone arm cable. Feed the tone arm cable DIN end first through the slotted hole and up through the collar. You can let the cable rest temporarily as you prepare to install the tone arm.



Connect tonearm cable to the AMG tone arm and gently place tonearm into the collar while pulling the tonearm cable the opposite direction back through the slot. If you are using the 12JT "Turbo" tonearm, loosen the VTA lock using the thumb screw located at the back of the tonearm. If this isn't loosened first, the tonearm will not drop fully into the mounting collar.

Lock the tonearm in place by using the same rear thumb screw on the 12JT. If using the standard 12J2 tonearm, lock the arm in place with the provided 1.5mm tool by tightening the lateral set screw located in the arm collar. Position the tonearm so that it's aimed towards the AMG logo.





After the platter and tonearm are installed, re-position the turntable to the point where it will be used. Final leveling can be done using the 3mm hex driver and the 2 spike feet which remain accessible. Use the built in bubble level to ensure the turntable is properly level. At this point you are ready to proceed with the installation of the tonearm's counterweight and cartridge, following instructions provided in the tonearm manual and by your cartridge manufacturer.

Please note that the Belt Mounting Tool has been improved utilizing both a more durable design and parts. Please see below image detailing improved BMT.

