



BEA WebLogic Adapter for SAP[®]

Installation and Configuration Guide for WebLogic Integration 2.1

Copyright

Copyright © 2003 BEA Systems, Inc. All Rights Reserved.

Copyright © 2003 iWay Software. All Rights Reserved.

Restricted Rights Legend

This software and documentation is subject to and made available only pursuant to the terms of the BEA Systems License Agreement and may be used or copied only in accordance with the terms of that agreement. It is against the law to copy the software except as specifically allowed in the agreement. This document may not, in whole or in part, be copied photocopied, reproduced, translated, or reduced to any electronic medium or machine readable form without prior consent, in writing, from BEA Systems, Inc.

Use, duplication or disclosure by the U.S. Government is subject to restrictions set forth in the BEA Systems License Agreement and in subparagraph (c)(1) of the Commercial Computer Software-Restricted Rights Clause at FAR 52.227-19; subparagraph (c)(1)(ii) of the Rights in Technical Data and Computer Software clause at DFARS 252.227-7013, subparagraph (d) of the Commercial Computer Software--Licensing clause at NASA FAR supplement 16-52.227-86; or their equivalent.

Information in this document is subject to change without notice and does not represent a commitment on the part of BEA Systems. THE SOFTWARE AND DOCUMENTATION ARE PROVIDED "AS IS" WITHOUT WARRANTY OF ANY KIND INCLUDING WITHOUT LIMITATION, ANY WARRANTY OF MERCHANTABILITY OR FITNESS FOR A PARTICULAR PURPOSE. FURTHER, BEA Systems DOES NOT WARRANT, GUARANTEE, OR MAKE ANY REPRESENTATIONS REGARDING THE USE, OR THE RESULTS OF THE USE, OF THE SOFTWARE OR WRITTEN MATERIAL IN TERMS OF CORRECTNESS, ACCURACY, RELIABILITY, OR OTHERWISE.

Trademarks or Service Marks

BEA, Jolt, Tuxedo, and WebLogic are registered trademarks of BEA Systems, Inc. BEA Builder, BEA Campaign Manager for WebLogic, BEA eLink, BEA Manager, BEA WebLogic Commerce Server, BEA WebLogic Enterprise, BEA WebLogic Enterprise Platform, BEA WebLogic Express, BEA WebLogic Integration, BEA WebLogic Personalization Server, BEA WebLogic Platform, BEA WebLogic Portal, BEA WebLogic Server, BEA WebLogic Workshop and How Business Becomes E-Business are trademarks of BEA Systems, Inc.

All other trademarks are the property of their respective companies.

BEA WebLogic Adapter for SAP Installation and Configuration Guide for WebLogic Integration 2.1

Part Number	Date	Release
N/A	March 2003	7.0 with Service Pack 2

Table of Contents

About This Document

Audience.....	v
Related Information.....	vi
Contact Us!.....	vi
Documentation Conventions	vii

1. Installing the Adapter for WebLogic Integration 2.1

Before Installing the Adapter	1-2
Getting the Java Connector	1-2
Understanding the Representation of Paths.....	1-3
Step 1. Obtaining the BEA WebLogic Adapter for SAP	1-4
Step 2. Extracting JARs and Adjusting the Classpath.....	1-5
Extracting JARs and Adjusting the Classpath for Windows.....	1-5
Extracting JARs and Adjusting the Classpath for UNIX.....	1-6
Step 3. Configuring the WebLogic Integration Database for the Domain	1-8
Step 4. Replacing the xmltoolkit.jar File.....	1-8
Step 5. Updating the BEA License.....	1-10
Step 6. Deploying the Adapter Using the WebLogic Server Console	1-11
Step 7. Adding the Administrative Server User Name to the Adapter Group	1-14
Next Steps.....	1-15



About This Document

This document explains how to install the BEA WebLogic Adapter for SAP for WebLogic Integration 2.1. The BEA WebLogic Adapter for SAP is an application that is installed into the WebLogic Server J2EE application server infrastructure and WebLogic Integration. This adapter quickly and easily integrates your SAP IDocs, RFCs, and BAPIs with WebLogic Integration using Application Integration. Together, the adapter and WebLogic Integration provide all the functionality you need to integrate your mission critical SAP system with other enterprise applications.

This document is organized as follows:

- [Chapter 1, “Installing the Adapter for WebLogic Integration 2.1,”](#) describes how to install the BEA WebLogic Adapter for SAP.

Audience

This document is written for system integrators who develop client interfaces between SAP and other applications. It describes how to install the BEA WebLogic Adapter for SAP in order to integrate SAP IDocs, RFCs, and BAPIs with WebLogic Integration. It is assumed that readers know Web technologies and have a general understanding of Microsoft Windows and UNIX systems as well as the WebLogic Integration and WebLogic Server infrastructure.

Related Information

The following documents provide additional information for the associated software components:

- *BEA WebLogic Adapter for SAP User Guide*
- *BEA WebLogic Adapter for SAP Release Notes*
- *BEA Application Explorer Installation Guide*
- BEA WebLogic Server 6.1 installation and user documentation, which is available at the following URL:

<http://edocs.bea.com/wls/docs61/index.html>

- BEA WebLogic Integration 2.1 installation and user documentation, which is available at the following URL:

http://edocs.bea.com/wlintegration/v2_1sp/index.html

Contact Us!

Your feedback on the BEA WebLogic Adapter for SAP documentation is important to us. Send us e-mail at docsupport@bea.com if you have questions or comments. Your comments will be reviewed directly by the BEA professionals who create and update the BEA WebLogic Adapter for SAP documentation.

In your e-mail message, please indicate which version of the BEA WebLogic Adapter for SAP documentation you are using.

If you have any questions about this version of BEA WebLogic Adapter for SAP, or if you have problems installing and running the BEA WebLogic Adapter for SAP, contact BEA Customer Support through BEA WebSupport at www.bea.com. You can also contact Customer Support by using the contact information provided on the Customer Support Card that is included in the product package.

When contacting Customer Support, be prepared to provide the following information:

- Your name, e-mail address, phone number, and fax number
- Your company name and company address
- Your machine type and authorization codes
- The name and version of the product you are using
- A description of the problem and the content of pertinent error messages

Documentation Conventions

The following documentation conventions are used throughout this document.

Convention	Item
boldface text	Indicates terms defined in the glossary.
Ctrl+Tab	Indicates that you must press two or more keys simultaneously.
<i>italics</i>	Indicates emphasis or book titles.
monospace text	Indicates code samples, commands and their options, data structures and their members, data types, directories, and file names and their extensions. Monospace text also indicates text that you must enter from the keyboard. <i>Examples:</i> <pre>#include <iostream.h> void main () the pointer psz chmod u+w * \tux\data\ap .doc tux.doc BITMAP float</pre>

Convention	Item
monospace boldface text	Identifies significant words in code. <i>Example:</i> void commit ()
<i>monospace</i> <i>italic</i> <i>text</i>	Identifies variables in code. <i>Example:</i> String <i>expr</i>
UPPERCASE TEXT	Indicates device names, environment variables, and logical operators. <i>Examples:</i> LPT1 SIGNON OR
{ }	Indicates a set of choices in a syntax line. The braces themselves should never be typed.
[]	Indicates optional items in a syntax line. The brackets themselves should never be typed. <i>Example:</i> buildobjclient [-v] [-o name] [-f file-list]... [-l file-list]...
	Separates mutually exclusive choices in a syntax line. The symbol itself should never be typed.
...	Indicates one of the following in a command line: <ul style="list-style-type: none"> ■ That an argument can be repeated several times in a command line ■ That the statement omits additional optional arguments ■ That you can enter additional parameters, values, or other information The ellipsis itself should never be typed. <i>Example:</i> buildobjclient [-v] [-o name] [-f file-list]... [-l file-list]...
.	Indicates the omission of items from a code example or from a syntax line. The vertical ellipsis itself should never be typed.

1 Installing the Adapter for WebLogic Integration 2.1

This section provides instructions for installing the BEA WebLogic Adapter for SAP with WebLogic Integration. It includes the following topics:

- [Before Installing the Adapter](#)
- [Understanding the Representation of Paths](#)
- [Step 1. Obtaining the BEA WebLogic Adapter for SAP](#)
- [Step 2. Extracting JARs and Adjusting the Classpath](#)
- [Step 3. Configuring the WebLogic Integration Database for the Domain](#)
- [Step 4. Replacing the xmltoolkit.jar File](#)
- [Step 5. Updating the BEA License](#)
- [Step 6. Deploying the Adapter Using the WebLogic Server Console](#)
- [Step 7. Adding the Administrative Server User Name to the Adapter Group](#)
- [Next Steps](#)

Before Installing the Adapter

Before you install the BEA WebLogic Adapter for SAP, you must review the *BEA WebLogic Adapter for SAP Release Notes* to ensure that you have the required prerequisite software installed. The *BEA WebLogic Adapter for SAP Release Notes* is available at the following URL:

<http://edocs.bea.com/wladapters/doc70/index.html>

In order to interact with SAP, you must gather the following SAP-specific connection information and ensure that it is available during the BEA WebLogic Adapter for SAP installation and configuration process:

- SAP Application Server Host Name/Address
- SAP System Number
- SAP Client
- SAP User ID
- SAP Password
- SAP Language

Getting the Java Connector

Before installing the BEA WebLogic Adapter for SAP, you must first download and install the SAP Java Connector on the target platform. Download the SAP Java Connector from the following URL:

<http://service.sap.com/connectors>

Note: A valid SAP Service ID is required. For more information, contact your SAP BASIS administrator.

1. After downloading the SAP Java Connector, use WinZip or jar to extract the files to a directory of your choice (for example, `d:\sap_rfc` on Windows or `/sap_rfc` on a UNIX system).

2. Place the files in the proper locations:

- On a Windows system, the `sapjco.jar` file unloads the `sapjcorfc.dll` from the directory in which it is invoked. This file should remain in the same directory as the `sapjco.jar` file. Place the other library file, `librfc32.dll`, in the Windows `\system32` directory; for example, `c:\winnt\system32`.
- On UNIX systems, keep the library files, `librfccm` and `libsapjcorfc`, in the same directory with the `sapjco.jar` file.

Note: The file extensions for these files vary depending on the UNIX platform; for example, on Solaris, the file names are `libsapjcorfc.so` and `librfccm.so`.

Understanding the Representation of Paths

Because the location of files in the WebLogic Integration environment depends on options selected during installation and configuration, the conventions that follow are used throughout to represent paths.

- `BEA_HOME` represents the BEA Home directory specified for your WebLogic installation.

For example, if you install the product in the default location on a Windows system, `BEA_HOME` represents `c:\bea`.

- `WLI_HOME` represents the root of your WebLogic Integration installation.

For example:

- If you install WebLogic Integration 2.1 in the default location on a Windows system, `WLI_HOME` represents `c:\bea\wlintegration2.1`.
- `domain` is used to indicate the name of a domain.
 - In WebLogic Integration 2.1, preconfigured domains (`bpmdomain`, `eidomain`, `wlidomain`, and `samples`) are created as subdirectories of the `WLI_HOME\config` directory. Therefore, `domain` may be used to represent the root of a preconfigured WebLogic Integration 2.1 domain as follows:

```
WLI_HOME\config\domain
```

1 Installing the Adapter for WebLogic Integration 2.1

- *DOMAIN_HOME* represents the complete path to the root of a domain.

For example:

- If you install WebLogic Integration 2.1 in the default location on a Windows system, *DOMAIN_HOME* represents
`c:\bea\wlintegration2.1\config\domain.`

Note: *WLI_HOME* and *BEA_HOME* (italicized) also represent the corresponding Windows and UNIX environment variables. For example, the literal interpretation of *WLI_HOME* is %WLI_HOME% for Windows and \$WLI_HOME for UNIX.

Unlike *WLI_HOME* and *BEA_HOME*, *DOMAIN_HOME* is not an environment variable that is set by default in the WebLogic Integration environment.

with WebLogic Integration 2.1. It includes the following steps:

Step 1. Obtaining the BEA WebLogic Adapter for SAP

The BEA WebLogic Adapter for SAP is packaged as an EAR file (*BEA_SAP_1_0.ear*). You can obtain the software on CD or download it from www.bea.com.

Note: At the time of publication of this document, WebLogic Server 6.1 is unable to explode RAR files (BEA Support CASE number 333672). Use an extraction tool (such as WinZip) to extract the contents of the adapter EAR file, *BEA_SAP_1_0.ear*, and add the location of the unpackaged objects to the server's classpath (see [Step 2. Extracting JARs and Adjusting the Classpath](#)).

Note: Check the release notes to determine if there are required patches for WebLogic Platform that are specific to your configuration. Contact BEA Customer Support to obtain patches. Information on contacting customer support is in the release notes.

Step 2. Extracting JARs and Adjusting the Classpath

Set the classpath using the procedure appropriate for your system:

- [Extracting JARs and Adjusting the Classpath for Windows](#)
- [Extracting JARs and Adjusting the Classpath for UNIX](#)

Note: The following procedures reference the SAP Java Connector, which must be obtained from SAP and installed before installing the BEA WebLogic Adapter for SAP. For additional information, see [“Getting the Java Connector” on page 1-2](#).

Extracting JARs and Adjusting the Classpath for Windows

To unzip the adapter JAR files and adjust the classpath on Windows, complete the following steps:

1. Use WinZip (or another similar extracting product) to extract the `BEA_SAP_1_0.ear` file to a directory of your choice (for example, `BEA_HOME\adapters\sap`).

2. Go to the root directory for your domain:

```
cd DOMAIN_HOME
```

Note: You must choose a WebLogic Integration domain that supports application integration functionality.

3. Find the `SetDomainTypeData.cmd` file.

Here, `DomainType` is the type of the domain. For example, if your domain is configured to support the development of solutions that employ the full range of WebLogic Integration functionality, it contains the `SetwliDomainData.cmd` file.

1 Installing the Adapter for WebLogic Integration 2.1

4. Update the following SVRCP environment variable settings to the `SetDomainTypeData.cmd` file for the domain to include all the JAR files included in the EAR file.

Note: The SVRCP environment variable is used in the `SetDomainTypeData` script to set the classpath for the java executable.

After the following line:

```
set SVRCP=%SVRCP%;%WLI_DOMAIN_HOME%\wla
```

add the following JAR files, which are listed in the order required for the classpath:

```
set SVRCP=%SVRCP%;BEA_HOME\adapters\sap\BEA_SAP_1_0.jar
set SVRCP=%SVRCP%;BEA_HOME\adapters\sap\ibi-edaqm.jar
set SVRCP=%SVRCP%;BEA_HOME\adapters\sap\xercesImpl.jar
set SVRCP=%SVRCP%;BEA_HOME\adapters\sap\xmlParserAPIs.jar
set SVRCP=%SVRCP%;BEA_HOME\adapters\sap\xmltoolkit.jar
REM ===== SAP Java Libraries and DLL's (for JNI Calls) =====
set SVRCP=%SVRCP%;BEA_HOME\adapters\sap\ibi-sapjco.jar
set SVRCP=%SVRCP%;d:\sap_rfc\sapjco.jar
```

Here, `BEA_HOME\adapters\sap` is the directory specified in step 1, and `d:\sap_rfc` is the directory in which you downloaded and unzipped the `sapjco.jar` file. Ensure that the `librfc32.dll` file is installed in your Windows `\system32` directory. For more information on these files, see “Before Using the Adapter with SAP” on page -1.

Extracting JARs and Adjusting the Classpath for UNIX

To extract the adapter JAR files and adjust the classpath on UNIX, complete the following steps:

1. Use `jar` (or another similar extracting product) to extract `BEA_SAP_1_0.ear` to a directory of your choice (for example, `BEA_HOME\adapters\sap`).
2. Go to the root directory for your domain:

```
cd DOMAIN_HOME
```

Note: You must choose a WebLogic Integration domain that supports application integration functionality.

Step 2. Extracting JARs and Adjusting the Classpath

3. Find the `SetDomainTypeData.cmd` file.

Here, `DomainType` is the type of the domain. For example, if your domain is configured to support the development of solutions that employ the full range of WebLogic Integration functionality, it contains the `SetwliDomainData.cmd` file.

4. Update the following SVRCP environment variable settings to the `SetDomainTypeData.cmd` file for the domain to include all the JAR files included in the EAR file.

Note: The SVRCP environment variable is used in the `SetDomainTypeData` script to set the classpath for the java executable.

After the following line:

```
set SVRCP=%SVRCP%;%WLI_DOMAIN_HOME%\wla\i
```

add the following JAR files, which are listed in the order required for the classpath:

```
SVRCP=$SVRCP:BEA_HOME/adapters/sap/BEA_SAP_1_0.jar
SVRCP=$SVRCP:BEA_HOME/adapters/sap/ibi-edaqm.jar
SVRCP=$SVRCP:BEA_HOME/adapters/sap/xercesImpl.jar
SVRCP=$SVRCP:BEA_HOME/adapters/sap/xmlParserAPIs.jar
SVRCP=$SVRCP:BEA_HOME/adapters/sap/xmltoolkit.jar
# ===== SAP Java Libraries and DLL's (for JNI Calls) =====
SVRCP=$SVRCP:/sap_rfc/sapjco.jar
SVRCP=$SVRCP:BEA_HOME/adapters/sap/your_unix_system/sapjco.jar
```

Here, `BEA_HOME/adapters/sap` is the directory specified in step 1, and `/sap_rfc` is the directory in which you downloaded and unpacked the `sapjco.jar` file. For more information, see [“Getting the Java Connector” on page 1-2](#).

5. Update the `SetDomainTypeData.cmd` file to add the location of the files to the appropriate environment variable.

- For example, on Windows, add the following to the

`SetDomainTypeData.cmd` file to add the directory to the `PATH`:

```
REM ===== Add SAP Binaries =====
SET PATH=%PATH%;"%BEA_HOME%\adapters\sap\win32"
```

- For example, on Solaris, add the following to the `SetDomainTypeData.cmd` file to add the directory to the `LD_LIBRARY_PATH`:

```
# ===== Add SAP Binaries =====
LD_LIBRARY_PATH=$LD_LIBRARY_PATH:/sap_rfc
```

1 *Installing the Adapter for WebLogic Integration 2.1*

- For example, on HP_UX, add the following to the `SetDomainTypeData.cmd` file to add the directory to the `SHLIB_PATH`:

```
# ===== Add SAP Binaries =====  
SHLIB_PATH=$LD_LIBRARY_PATH:/sap_rfc
```
- For example, on AIX, add the following to the `SetDomainTypeData.cmd` file to add the directory to the `LIB_PATH`:

```
# ===== Add SAP Binaries =====  
LIB_PATH=$LD_LIBRARY_PATH:/sap_rfc
```

Here, `/sap_rfc` is the directory in which you downloaded and unpacked the `sapjco.jar` file.

Step 3. Configuring the WebLogic Integration Database for the Domain

If you have not already done so, you must create the WebLogic Integration database tables for your domain. For detailed instructions, see “Configuring the Database for a Domain” in *Starting, Stopping and Customizing BEA WebLogic Integration*, which is available at the following URL:

http://edocs.bea.com/wlintegration/v2_1sp/config/index.htm

Step 4. Replacing the `xmltoolkit.jar` File

The BEA WebLogic Adapters include a new `xmltoolkit.jar` file. You must replace your existing WebLogic Integration `xmltoolkit.jar` file with the new JAR file.

To configure the new `xmltoolkit.jar` file, follow these steps:

1. Rename your original `xmltoolkit.jar` file to `xmltoolkit.jar.old` by entering the commands appropriate for your operating system:
 - On a Windows system:


```
cd WLI_HOME\lib
rename xmltoolkit.jar xmltoolkit.jar.old
```

- On a UNIX system:

```
cd WLI_HOME/lib
mv xmltoolkit.jar xmltoolkit.jar.old
```

2. Extract the `xmltoolkit.jar` file from the adapter EAR file into a temporary directory.
3. Copy the new `xmltoolkit.jar` file (extracted in step 2) to the `WLI_HOME\lib` directory for Windows or the `WLI_HOME/lib` directory for UNIX.

Caution: Simply replacing the `xmltoolkit.jar` file is not sufficient; you must also make changes to the `setenv` and `SetDomainTypeData` scripts as described in the following steps.

4. Edit the top-level `setenv` script and make the appropriate changes for your operating system:

- On a Windows system, edit the `WLI_HOME\setenv.cmd` script.

Replace the line:

```
set WLICOMMONCP=
```

with

```
set WLICOMMONCP=%WLI_HOME%\lib\xmltoolkit.jar
```

- On a UNIX system, edit the `WLI_HOME/setenv.sh` script.

Replace the line:

```
WLICOMMONCP=$WLI_LIB/wlicommon.jar
```

with

```
WLICOMMONCP=$WLI_LIB/wlicommon.jar:$WLI_HOME/lib/xmltoolkit.jar
```

5. Edit the `SetDomainTypeData` script.

Here, *DomainType* is the type of domain. For example, depending on the configuration of your domain, locate and edit the `SetwliDomainData.cmd` or `SeteaiDomainData.cmd` file.

- On a Windows system:

For example, edit the `DOMAIN_HOME\SetwliDomainData.cmd` script.

Replace the line:

```
set SVRCP=%WLISERVERCP%;%CMNCP%
```

with

```
set  
SVRCP=%WLI_HOME%\lib\xmltoolkit.jar;%WLISERVERCP%;%CMNCP%
```

- On a UNIX system:

For example, edit the *DOMAIN_HOME/SetwliDomainData* script.

Replace the line:

```
SVRCP=$WLISERVERCP:$CMNCP
```

with

```
SVRCP=$WLI_HOME/lib/xmltoolkit.jar:$WLISERVERCP:$CMNCP
```

Step 5. Updating the BEA License

The BEA WebLogic Adapter for SAP cannot be used without a valid software license. If you have downloaded the adapter for evaluation, you must obtain an evaluation license as described on the adapter download page. If you have purchased a license for the adapter, the license file is typically sent to you as an e-mail attachment.

When you have obtained a valid license for the adapter, update your `license.bea` file by completing the following steps:

1. Save the license file that you obtained with a name other than `license.bea`, in the *BEA_HOME* directory. For example, save the file as `sap_adapter_license.bea`. Use this file as the *license_update_file* in step 4 of this procedure.

Warning: Do not overwrite or change the name of the existing `license.bea` file.

2. Perform the step appropriate for your platform:
 - On a Windows system, open an MS-DOS session and go to the *BEA_HOME* directory.
 - On a UNIX system, go to the *BEA_HOME* directory.

3. If it is not already included, add the JDK to your `PATH` variable by executing the command appropriate to your system:
 - On a Windows system:

```
set PATH=BEA_HOME\jdk131_03\bin;%PATH%
```
 - On a UNIX system:

```
PATH=BEA_HOME/jdk131_03/bin:$PATH
export PATH
```
4. Merge the license update file into your existing license by executing the command appropriate to your system:
 - On a Windows system:

```
UpdateLicense license_update_file
```
 - On a UNIX system:

```
sh UpdateLicense.sh license_update_file
```

Here, *license_update_file* is the name to which you saved the license update file in step 1.
5. Save a copy of your updated `license.bea` file in a safe place outside the WebLogic Integration and application installation directories.

Step 6. Deploying the Adapter Using the WebLogic Server Console

After the BEA WebLogic Adapter for SAP is installed, it must be deployed to WebLogic Server for your domain (for example, `wlidomain`).

To configure and deploy an adapter using the WebLogic Server Administration Console:

1. Start WebLogic Server.

1 Installing the Adapter for WebLogic Integration 2.1

2. Start the WebLogic Server Administration Console in a browser using the following URL:

`http://localhost:port/console/`

Here, *localhost* represents the machine on which WebLogic Server is running and *port* represents the listening port.

For example, `http://localhost:7001/console/`

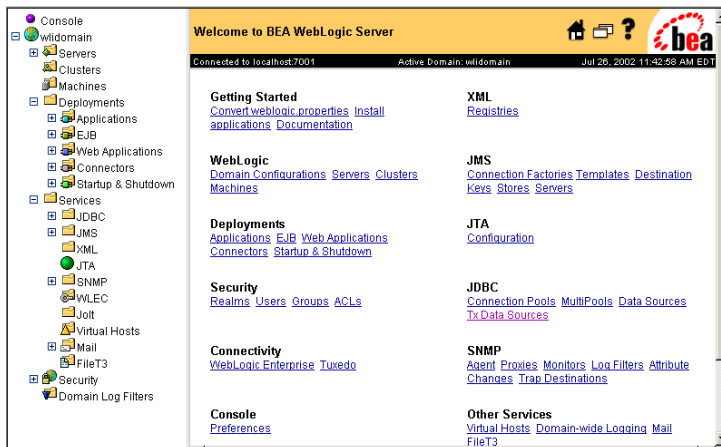
3. When prompted, enter the user name and password for the server.

Note: If you have not updated the default login, see “WebLogic Integration Users and Passwords” in *Starting, Stopping, and Customizing WebLogic Integration* at the following URL:

`http://edocs.bea.com/wlintegration/v2_1sp/config/getstart.htm`

The WebLogic Server Administration Console opens.

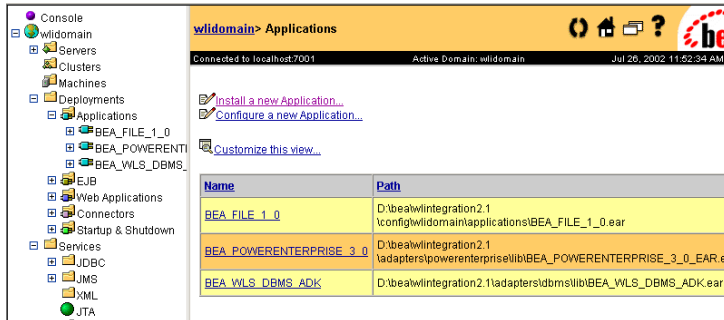
Figure 1-1 WebLogic Server Console



4. In the left pane, choose Deployments and then Applications from the navigation tree.

The console displays the Applications window.

Figure 1-2 Applications Window

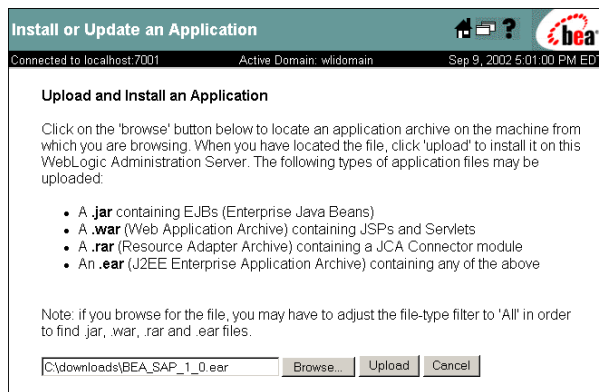


5. Click the Install a new Application link.

The console displays the Install or Update an Application window.

6. Click Browse to locate the application archive you selected during installation (BEA_SAP_1_0.ear).

Figure 1-3 Locating the Application Archive Window



7. Click Upload to upload the BEA_SAP_1_0.ear file.

The console displays the application files currently installed to indicate that the upload is complete and the adapter file is deployed to WebLogic Server.

8. You can verify deployment by viewing the adapter configuration, as follows:
 - a. Choose Deployments and then Applications from the navigation tree.
 - b. Click the BEA_SAP_1_0.ear file link.

Step 7. Adding the Administrative Server User Name to the Adapter Group

A user group, `adapter`, is defined in each domain that supports application integration functionality. Before you create an application view that employs the events or services supported by an adapter, you must add the user name defined for the administrative server to the `adapter` group.

Note: By default, the `adapter` group includes the user `system`. If the user name defined for the administrative server is `system`, skip this step. For example, if you are starting the server in a preconfigured domain, and you have not modified the default administrative server login, you can skip this step.

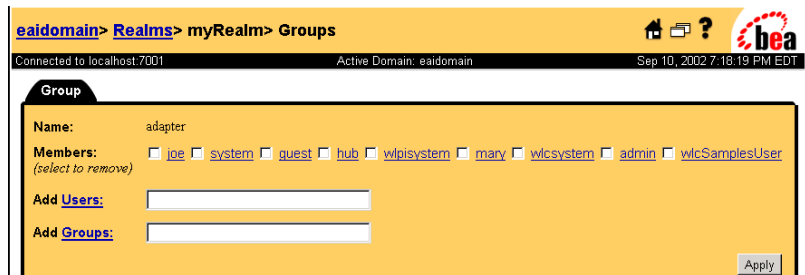
To add the administrative server user name to the `adapter` group, complete the following steps:

1. In the left pane of the WebLogic Server Administration Console, choose Security and then Groups from the navigation tree.

The console displays groups currently defined for the domain.

2. Locate and click the link for the `adapter` group to display the group definition.

Figure 1-4 Group Definition



3. If the administrative server user name is not included in the Members list, enter the user name in the Add Users field.

4. Click Apply to add the user name to the group.

The name is added to the Members list.

Next Steps

If you have not already installed the BEA Application Explorer, install it now. See the *BEA Application Explorer Installation and Configuration Guide*.

When you have successfully installed and deployed the adapter and the BEA Application Explorer, you can log on to the WebLogic Integration Application View Console to create application views that employ events and services supported by the BEA WebLogic Adapter for SAP. For more information, see the *BEA WebLogic Adapter for SAP User Guide*.

1 *Installing the Adapter for WebLogic Integration 2.1*
