



BEARINGS & BUSHINGS

From the small radial bearings to the heavy-duty Type-E industrial bearings, we have you covered. You will find an expansive selection of bearings, featuring the brands KML, FYH, Royersford, and Timken. Look even further and you will find needle bearings, cam bearings, tapered bearings, flanged bearings, and bronze bushings.

For current prices and product availability, visit: <https://paulbhardware.com/catalog-tool>



Paul B
WHOLESALE



**Your Premium
Bearing Alternative**

available through

Paul B Wholesale



BEARINGS & BUSHINGS

www.kmlbearingusa.com

For current prices and product availability, visit: <https://paulbhardware.com/catalog-tool> 905

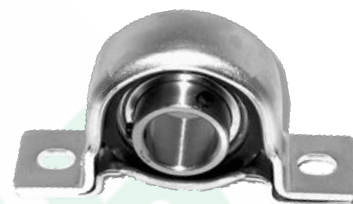
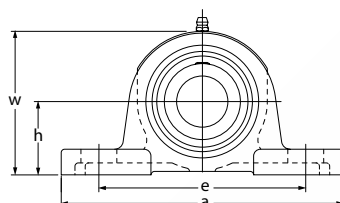
Bearings & Bushings

Set Screw Pillow Block Bearing



Rubber Mounted Pillow Block - Set Screw Lock

- › Pillow Block Bearing
- › Standard Race Insert
- › Pressed Steel Housing
- › Used In HVAC Applications

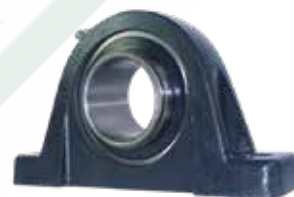


SBRPP20516KML

SKU #	Inner Diameter	Length	Overall Length	Mounting	Height	List Price
SBRPP20210KML	5/8"	2-63/64" Bolt Spacing	4-1/8"	1" Center Line	2-3/32"	\$19.99
SBRPP20412KML	3/4"	3-25/64" Bolt Spacing	4-19/64"	1-1/8" Center Line	2-7/32"	\$19.99
SBRPP20516KML	1"	3-3/4" Bolt Spacing	4-7/8"	1-5/16" Center Line	2-5/8"	\$24.99

Standard Pillow Block - Set Screw Lock

- › Pillow Block Bearing
- › Standard Race Insert
- › Cast Iron Housing



SBPE20516GKML

SKU #	Inner Diameter	Length	Overall Length	Mounting	Height	List Price
SBPE2018GKML	1/2"	3-3/4" Bolt Spacing	4-7/8"	1-3/16" Center Line	2-1/4"	\$15.99
SBPE20210GKML	5/8"	3-3/4" Bolt Spacing	4-7/8"	1-3/16" Center Line	2-1/4"	\$15.99
SBPE20412GKML	3/4"	3-3/4" Bolt Spacing	5"	1-5/16" Center Line	2-9/16"	\$14.99
SBPE20516GKML	1"	4-1/8" Bolt Spacing	5-1/2"	1-7/16" Center Line	2-3/4"	\$18.49
SBPE20620GKML	1-1/4"	4-49/64" Bolt Spacing	6-1/2"	1-11/16" Center Line	3-9/32"	\$22.99
SBPE20720GKML	1-1/4"	5" Bolt Spacing	6-9/16"	1-7/8" Center Line	3-11/16"	\$29.99
SBPE20722GKML	1-3/8"	5" Bolt Spacing	6-9/16"	1-7/8" Center Line	3-11/16"	\$29.99
SBPE20824GKML	1-1/2"	5-25/64" Bolt Spacing	7-1/4"	1-15/16" Center Line	3-15/16"	\$34.99

Standard Pillow Block - Set Screw Lock, Extended Race

- › Pillow Block Bearing
- › Extended Race Insert
- › Cast Iron Housing



UCPE20516KML

SKU #	Inner Diameter	Length	Overall Length	Mounting	Height	List Price
UCPE2018KML	1/2"	3-3/4" Bolt Spacing	5"	1-5/16" Center Line	2-9/16"	\$15.99
UCPE20210KML	5/8"	3-3/4" Bolt Spacing	5"	1-5/16" Center Line	2-9/16"	\$15.99
UCPE20412KML	3/4"	3-3/4" Bolt Spacing	5"	1-5/16" Center Line	2-9/16"	\$14.99
UCPE20516KML	1"	4-1/8" Bolt Spacing	5-1/2"	1-7/16" Center Line	2-3/4"	\$16.99
UCPE20618KML	1-1/8"	4-49/64" Bolt Spacing	6-1/2"	1-11/16" Center Line	3-9/32"	\$22.99
UCPE20620KML	1-1/4"	4-49/64" Bolt Spacing	6-1/2"	1-11/16" Center Line	3-9/32"	\$22.99
UCPE20824KML	1-1/2"	5-25/64" Bolt Spacing	7-1/4"	1-15/16" Center Line	3-15/16"	\$34.99
UCPE20928KML	1-3/4"	5-3/4" Bolt Spacing	7-15/32"	2-1/8" Center Line	4-1/4"	\$39.99
UCPE21132KML	2"	6-23/32" Bolt Spacing	8-5/8"	2-1/2" Center Line	4-31/32"	\$62.99

Set Screw Pillow Block Bearing

FYH

Premium Pillow Block - Set Screw Lock

- › Premium Pillow Block Bearing
- › Extended Race Insert
- › Cast Iron Housing



UCP20516FYH

SKU #	Inner Diameter	Length	Overall Length	Mounting	Height	List Price
UCP20412FYH	3/4"	3-3/4" Bolt Spacing	5"	1-5/16" Center Line	2-3/8"	\$19.99
UCP20516FYH	1"	3-3/4" Bolt Spacing	5-1/2"	1-7/16" Center Line	2-3/4"	\$22.99
UCP20620FYH	1-1/4"	4-1/8" Bolt Spacing	6-1/2"	1-11/16" Center Line	3-5/16"	\$29.99
UCP20720FYH	1-1/4"	5" Bolt Spacing	6-9/16"	1-7/8" Center Line	3-3/4"	\$37.99
UCP20722FYH	1-3/8"	5" Bolt Spacing	6-9/16"	1-7/8" Center Line	3-3/4"	\$37.99
UCP20824FYH	1-1/2"	5-13/32" Bolt Spacing	7-1/4"	1-15/16" Center Line	3-27/32"	\$42.99

TIMKEN

Premium Pillow Block - Set Screw Lock

- › Premium Pillow Block Bearing
- › Standard Race Insert
- › Cast Iron Housing



YAS112

SKU #	Inner Diameter	Length	Overall Length	Mounting	Height	List Price
YAS34	3/4"	3-3/4" Bolt Spacing	5"	1-5/16" Center Line	2-5/8"	\$66.49
YAS1	1"	4-1/8" Bolt Spacing	5-1/2"	1-7/16" Center Line	2-7/8"	\$69.99
YAS114	1-1/4"	5-1/8" Bolt Spacing	6-9/16"	1-7/8" Center Line	3-3/4"	\$91.99
YAS112	1-1/2"	5-3/8" Bolt Spacing	7-1/16"	1-15/16" Center Line	4"	\$114.99

SEALMASTER®

USA Pillow Block - Set Screw Lock

- › Premium Pillow Block Bearing
- › Standard Race Insert
- › Cast Iron Housing



SMNP16

SKU #	Inner Diameter	Length	Overall Length	Mounting	Height	List Price
SMNP16	1"	4-1/8" Bolt Spacing	5-1/2"	1-7/16" Center Line	2-13/16"	\$102.99
SMNP20	1-1/4"	5" Bolt Spacing	6-9/16"	1-7/8" Center Line	1-11/16"	\$139.99
SMNP22	1-3/8"	5" Bolt Spacing	6-9/16"	1-7/8" Center Line	1-11/16"	\$144.99
SMNP23	1-7/16"	5" Bolt Spacing	6-9/16"	1-7/8" Center Line	1-11/16"	\$144.99
SMNP24	1-1/2"	5-3/8" Bolt Spacing	7-1/4"	1-15/16" Center Line	3-15/16"	\$156.99
SMNP27	1-11/16"	5-3/4" Bolt Spacing	7-1/2"	2-1/8" Center Line	4-1/4"	\$184.99
SMNP28	1-3/4"	5-3/4" Bolt Spacing	7-1/2"	2-1/8" Center Line	4-1/4"	\$179.99
SMNP31	1-15/16"	6-1/4" Bolt Spacing	8-1/8"	2-1/4" Center Line	4-9/16"	\$209.99
SMNP32	2"	6-3/4" Bolt Spacing	8-5/8"	2-1/2" Center Line	5"	\$244.99
SMNP35	2-3/16"	6-3/4" Bolt Spacing	8-5/8"	2-1/2" Center Line	5"	\$244.99
SMNP39	2-7/16"	7-1/4" Bolt Spacing	9-1/2"	2-3/4" Center Line	5-9/16"	\$299.99

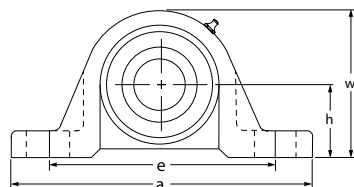
Bearings & Bushings

Lock Collar Pillow Block Bearing



Standard Pillow Block - Locking Collar

- > Pillow Block Bearing
- > Standard Race Insert
- > Cast Iron Housing



SAPE20516KML

SKU #	Inner Diameter	Length	Overall Length	Mounting	Height	List Price
SAPE2018KML	1/2"	3-3/4" Bolt Spacing	4-7/8"	1-3/16" Center Line	2-1/4"	\$14.49
SAPE20210KML	5/8"	3-3/4" Bolt Spacing	4-7/8"	1-3/16" Center Line	2-1/4"	\$14.49
SAPE20412KML	3/4"	3-3/4" Bolt Spacing	5"	1-5/16" Center Line	2-9/16"	\$15.49
SAPE20514KML	7/8"	4-1/8" Bolt Spacing	5-1/2"	1-7/16" Center Line	2-3/4"	\$19.99
SAPE20515KML	15/16"	4-1/8" Bolt Spacing	5-1/2"	1-7/16" Center Line	2-3/4"	\$19.49
SAPE20516KML	1"	4-1/8" Bolt Spacing	5-1/2"	1-7/16" Center Line	2-3/4"	\$17.99
SAPE20617KML	1-1/16"	4-49/64" Bolt Spacing	6-1/2"	1-11/16" Center Line	3-9/32"	\$24.99
SAPE20618KML	1-1/8"	4-49/64" Bolt Spacing	6-1/2"	1-11/16" Center Line	3-9/32"	\$24.99
SAPE20619KML	1-3/16"	4-49/64" Bolt Spacing	6-1/2"	1-11/16" Center Line	3-9/32"	\$24.99
SAPE20620KML	1-1/4"	4-49/64" Bolt Spacing	6-1/2"	1-11/16" Center Line	3-9/32"	\$22.99
SAPE20720KML	1-1/4"	5" Bolt Spacing	6-9/16"	1-7/8" Center Line	3-11/16"	\$29.99

Standard Pillow Block - Locking Collar, Extended Race

- > Pillow Block Bearing
- > Extended Race Insert
- > Cast Iron Housing



HCPE20516KML

SKU #	Inner Diameter	Length	Overall Length	Mounting	Height	List Price
HCPE20210KML	5/8"	3-3/4" Bolt Spacing	5"	1-5/16" Center Line	2-9/16"	\$15.99
HCPE20412KML	3/4"	3-3/4" Bolt Spacing	5"	1-5/16" Center Line	2-9/16"	\$15.49
HCPE20514KML	7/8"	4-1/8" Bolt Spacing	5-1/2"	1-7/16" Center Line	2-3/4"	\$18.99
HCPE20516KML	1"	4-1/8" Bolt Spacing	5-1/2"	1-7/16" Center Line	2-3/4"	\$17.99
HCPE20618KML	1-1/8"	4-49/64" Bolt Spacing	6-1/2"	1-11/16" Center Line	3-9/32"	\$22.99
HCPE20619KML	1-3/16"	4-49/64" Bolt Spacing	6-1/2"	1-11/16" Center Line	3-9/32"	\$24.99
HCPE20620KML	1-1/4"	4-49/64" Bolt Spacing	6-1/2"	1-11/16" Center Line	3-9/32"	\$22.99
HCPE20720KML	1-1/4"	5" Bolt Spacing	6-9/16"	1-7/8" Center Line	3-11/16"	\$27.99
HCPE20722KML	1-3/8"	5" Bolt Spacing	6-9/16"	1-7/8" Center Line	3-11/16"	\$27.99
HCPE20723KML	1-7/16"	5" Bolt Spacing	6-9/16"	1-7/8" Center Line	3-11/16"	\$29.99
HCPE20824KML	1-1/2"	5-25/64" Bolt Spacing	7-1/4"	1-15/16" Center Line	3-15/16"	\$34.99
HCPE20926KML	1-5/8"	5-3/4" Bolt Spacing	7-15/32"	2-1/8" Center Line	4-1/4"	\$42.99
HCPE20927KML	1-11/16"	5-3/4" Bolt Spacing	7-15/32"	2-1/8" Center Line	4-1/4"	\$39.99
HCPE20928KML	1-3/4"	5-3/4" Bolt Spacing	7-15/32"	2-1/8" Center Line	4-1/4"	\$39.99
HCPE21030KML	1-7/8"	6-1/4" Bolt Spacing	8-1/8"	2-1/4" Center Line	4-1/2"	\$49.99
HCPE21031KML	1-15/16"	6-1/4" Bolt Spacing	8-1/8"	2-1/4" Center Line	4-1/2"	\$49.99
HCPE21032KML	2"	6-1/4" Bolt Spacing	8-1/8"	2-1/4" Center Line	4-1/2"	\$49.99
HCPE21132KML	2"	6-23/32" Bolt Spacing	8-5/8"	2-1/2" Center Line	4-31/32"	\$59.99

Lock Collar Pillow Block Bearing

FYH

The foremost brand of Japanese mounted units for over 60 years.



FYH BEARING UNITS USA, INC.

FYH

Premium Pillow Block - Locking Collar, Extended Race

- › Premium Pillow Block Bearing
- › Extended Race Insert
- › Cast Iron Housing



NAP20516

SKU #	Inner Diameter	Length	Overall Length	Mounting	Height	List Price
NAP2018	1/2"	3-3/4" Bolt Spacing	5"	1-3/16" Center Line	2-3/8"	\$24.99
NAP20210	5/8"	3-3/4" Bolt Spacing	5"	1-3/16" Center Line	2-3/8"	\$24.99
NAP20412	3/4"	3-3/4" Bolt Spacing	5"	1-5/16" Center Line	2-3/8"	\$22.99
NAP20514	7/8"	3-3/4" Bolt Spacing	5-1/2"	1-7/16" Center Line	2-3/4"	\$27.99
NAP20515	15/16"	3-3/4" Bolt Spacing	5-1/2"	1-7/16" Center Line	2-3/4"	\$29.99
NAP20516	1"	3-3/4" Bolt Spacing	5-1/2"	1-7/16" Center Line	2-3/4"	\$24.99
NAP20618	1-1/8"	4-1/8" Bolt Spacing	6-1/2"	1-11/16" Center Line	3-5/16"	\$32.99
NAP20619	1-3/16"	4-1/8" Bolt Spacing	6-1/2"	1-11/16" Center Line	3-5/16"	\$29.99
NAP20620	1-1/4"	4-1/8" Bolt Spacing	6-1/2"	1-11/16" Center Line	3-5/16"	\$29.99
NAP20720	1-1/4"	5" Bolt Spacing	6-9/16"	1-7/8" Center Line	3-3/4"	\$39.99
NAP20722	1-3/8"	5" Bolt Spacing	6-9/16"	1-7/8" Center Line	3-3/4"	\$39.99
NAP20723	1-7/16"	5" Bolt Spacing	6-9/16"	1-7/8" Center Line	3-3/4"	\$37.99

continued on next page...

For current prices and product availability, visit: <https://paulhardware.com/catalog-tool> 909

Bearings & Bushings

Lock Collar Pillow Block Bearing

...continued from previous page

SKU #	Inner Diameter	Length	Overall Length	Mounting	Height	List Price
NAP20824	1-1/2"	5-13/32" Bolt Spacing	7-1/4"	1-15/16" Center Line	3-27/32"	\$44.99
NAP20825	1-9/16"	5-13/32" Bolt Spacing	7-1/4"	1-15/16" Center Line	3-27/32"	\$49.99
NAP20926	1-5/8"	5-3/4" Bolt Spacing	7-15/32"	2-1/8" Center Line	4-3/16"	\$57.99
NAP20927	1-11/16"	5-3/4" Bolt Spacing	7-15/32"	2-1/8" Center Line	4-3/16"	\$49.99
NAP20928	1-3/4"	5-3/4" Bolt Spacing	7-15/32"	2-1/8" Center Line	4-3/16"	\$47.99
NAP21030	1-7/8"	6-1/4" Bolt Spacing	8-1/8"	2-1/4" Center Line	4-7/16"	\$67.99
NAP21031	1-15/16"	6-1/4" Bolt Spacing	8-1/8"	2-1/4" Center Line	4-7/16"	\$57.99
NAP21132	2"	6-23/32" Bolt Spacing	8-5/8"	2-1/2" Center Line	4-29/32"	\$77.99
NAP21135	2-3/16"	6-23/32" Bolt Spacing	8-5/8"	2-1/2" Center Line	4-29/32"	\$79.99
NAP21236	2-1/4"	7-1/4" Bolt Spacing	9-1/2"	2-3/4" Center Line	5-7/16"	\$109.99
NAP21239	2-7/16"	7-1/4" Bolt Spacing	9-1/2"	2-3/4" Center Line	5-7/16"	\$94.99
NAP21547	2-15/16"	8-17/32" Bolt Spacing	10-13/16"	3-1/4" Center Line	6-3/8"	\$159.99

TIMKEN

Premium Pillow Block - Locking Collar, Extended Race

RAS1



SKU #	Inner Diameter	Length	Overall Length	Mounting	Height	List Price
RAS34	3/4"	3-3/4" Bolt Spacing	5"	1-5/16" Center Line	2-5/8"	\$89.99
RAS1	1"	4-1/8" Bolt Spacing	5-1/2"	1-7/16" Center Line	2-7/8"	\$96.99
RAS118	1-1/8"	4-5/8" Bolt Spacing	6-3/16"	1-11/16" Center Line	3-3/8"	\$105.99
RAS114	1-1/4"	5-1/8" Bolt Spacing	6-9/16"	1-7/8" Center Line	3-3/4"	\$129.99
RAS138	1-3/8"	5-1/8" Bolt Spacing	6-9/16"	1-7/8" Center Line	3-3/4"	\$134.99
RAS112	1-1/2"	5-3/8" Bolt Spacing	7-1/16"	1-15/16" Center Line	4"	\$139.99
RAS134	1-3/4"	5-7/8" Bolt Spacing	7-17/32"	2-1/8" Center Line	4-3/16"	\$169.99
RAS2	2"	6-15/16" Bolt Spacing	8-3/4"	2-1/2" Center Line	5"	\$205.99

SEALMASTER®

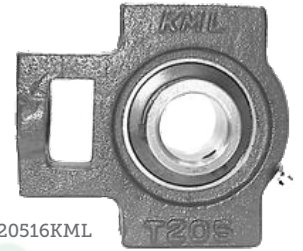
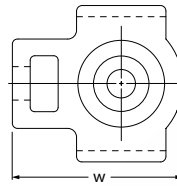
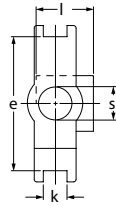
USA Pillow Block - Skwezloc Collar

- > Premium Pillow Block Bearing
- > Skwezloc Collar For Stronger Hold
- > Cast Iron Housing

SMNP20T



SKU #	Inner Diameter	Length	Overall Length	Mounting	Height	List Price
SMNP20T	1-1/4"	5" Bolt Spacing	6-9/16"	1-7/8" Center Line	3-3/4"	\$149.99
SMNP24T	1-1/2"	5-13/32" Bolt Spacing	7-1/4"	1-15/16" Center Line	3-15/16"	\$158.99
SMNP28T	1-3/4"	5-13/16" Bolt Spacing	7-1/2"	2-1/8" Center Line	4-1/4"	\$184.99
SMNP32T	2"	6-3/4" Bolt Spacing	8-1/8"	2-1/4" Center Line	4-9/16"	\$279.99



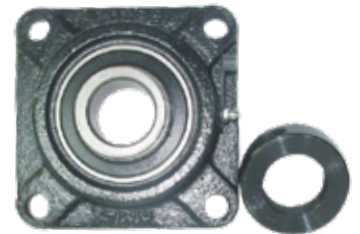
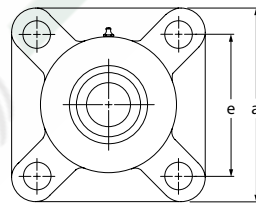
UCT20516KML

Set Screw Lock, Extended Race

- › Take-Up Bearing
- › Used To Align, Adjust & Maintain Tension

SKU #	Inner Diameter	Width	Length	Mounting	List Price
UCT20412KML	3/4"	3"	3-23/32"	15/32" Slot	\$18.99
UCT20516KML	1"	3"	3-13/16"	15/32" Slot	\$21.99
UCST20618KML	1-1/8"	3-1/2"	4-7/16"	17/32" Slot	\$27.99
UCT20620KML	1-1/4"	3-1/2"	4-7/16"	15/32" Slot	\$25.99
UCST20620KML	1-1/4"	3-1/2"	4-7/16"	17/32" Slot	\$24.99
UCT20824KML	1-1/2"	4-1/64"	5-11/16"	5/8" Slot	\$39.99
UCT20928KML	1-3/4"	4-1/64"	5-11/16"	5/8" Slot	\$49.99

4 Bolt Flange Bearings



SAF20516GKML

Standard 4 Bolt Flange - Locking Collar

- › 4 Bolt Flange Bearing
- › Standard Race Insert
- › Cast Iron Housing

SKU #	Inner Diameter	Length	Overall Length	Height	List Price
SAF20210GKML	5/8"	2-1/8" Bolt Spacing	2-63/64"	1-17/64"	\$15.49
SAF20412GKML	3/4"	2-1/2" Bolt Spacing	3-25/64"	1-33/64"	\$14.99
SAF20514GKML	7/8"	2-3/4" Bolt Spacing	3-3/4"	1-35/64"	\$19.99
SAF20515GKML	15/16"	2-3/4" Bolt Spacing	3-3/4"	1-35/64"	\$18.99
SAF20516GKML	1"	2-3/4" Bolt Spacing	3-3/4"	1-35/64"	\$17.49
SAF20618GKML	1-1/8"	3-9/32" Bolt Spacing	4-1/4"	1-49/64"	\$22.99
SAF20619GKML	1-3/16"	3-9/32" Bolt Spacing	4-1/4"	1-49/64"	\$22.99
SAF20620GKML	1-1/4"	3-9/32" Bolt Spacing	4-1/4"	1-49/64"	\$22.99
SAF20720GKML	1-1/4"	3-5/8" Bolt Spacing	4-19/32"	1-29/32"	\$25.99
SAF20928GKML	1-3/4"	4-1/8" Bolt Spacing	5-13/32"	2-5/32"	\$39.99

Bearings & Bushings

4 Bolt Flange Bearings



Standard 4 Bolt Flange - Locking Collar, Extended Race

- > 4 Bolt Flange Bearing
- > Extended Race Insert
- > Cast Iron Housing

HCFS20516KML



SKU #	Inner Diameter	Length	Overall Length	Height	List Price
HCFS20516KML	1"	2-3/4" Bolt Spacing	3-43/64"	1-13/16"	\$18.99
HCFS20618KML	1-1/8"	3-1/4" Bolt Spacing	4-11/64"	1-31/32"	\$21.99
HCFS20620KML	1-1/4"	3-1/4" Bolt Spacing	4-11/64"	1-31/32"	\$21.99
HCFS20720KML	1-1/4"	3-5/8" Bolt Spacing	4-9/16"	2-7/64"	\$27.99
HCFS20722KML	1-3/8"	3-5/8" Bolt Spacing	4-9/16"	2-7/64"	\$27.99
HCFS20723KML	1-7/16"	3-5/8" Bolt Spacing	4-9/16"	2-7/64"	\$27.99
HCFS20824KML	1-1/2"	4" Bolt Spacing	5-5/64"	2-21/64"	\$32.99
HCFS20926KML	1-5/8"	4-1/8" Bolt Spacing	5-5/16"	2-21/64"	\$42.99
HCFS20928KML	1-3/4"	4-1/8" Bolt Spacing	5-5/16"	2-21/64"	\$37.99
HCFS21031KML	1-15/16"	4-3/8" Bolt Spacing	5-5/8"	2-19/32"	\$49.99
HCFS21132KML	2"	5-1/8" Bolt Spacing	6-3/8"	2-15/16"	\$59.99

UCF20516KML



Standard 4 Bolt Flange - Set Screw Lock, Extended Race

SKU #	Inner Diameter	Length	Overall Length	Height	List Price
UCF20516KML	1"	2-3/4" Bolt Spacing	3-3/4"	1-13/32"	\$15.99
UCF20618KML	1-1/8"	3-9/32" Bolt Spacing	4-1/4"	1-37/64"	\$19.99
UCF20720KML	1-1/4"	3-5/8" Bolt Spacing	4-19/32"	1-3/4"	\$24.99
UCF20824KML	1-1/2"	4-1/64" Bolt Spacing	5-1/8"	2-1/64"	\$27.99
UCF20928KML	1-3/4"	4-1/8" Bolt Spacing	5-25/64"	2-1/16"	\$37.99
UCF21132KML	2"	5-1/8" Bolt Spacing	6-3/8"	2-9/32"	\$49.99

FYH

Premium 4 Bolt Flange - Locking Collar, Extended Race

- > Premium 4 Bolt Flange Bearing
- > Extended Race Insert
- > Cast Iron Housing

NANF20516



SKU #	Inner Diameter	Length	Overall Length	Height	List Price
NANF20210	5/8"	2-33/64" Bolt Spacing	3-3/8"	1-25/32"	\$27.99
NANF20412	3/4"	2-33/64" Bolt Spacing	3-3/8"	1-25/32"	\$27.99

continued on next page...

4 Bolt Flange Bearings

...continued from previous page

SKU #	Inner Diameter	Length	Overall Length	Height	List Price
NANF20514	7/8"	2-3/4" Bolt Spacing	3-3/4"	1-27/32"	\$29.99
NANF20516	1"	2-3/4" Bolt Spacing	3-3/4"	1-27/32"	\$29.99
NANF20618	1-1/8"	3-17/64" Bolt Spacing	4-1/4"	2"	\$37.99
NANF20619	1-3/16"	3-17/64" Bolt Spacing	4-1/4"	2"	\$34.99
NANF20620	1-1/4"	3-17/64" Bolt Spacing	4-1/4"	2"	\$34.99
NANF20720	1-1/4"	3-5/8" Bolt Spacing	4-19/32"	2-1/8"	\$44.99
NANF20722	1-3/8"	3-5/8" Bolt Spacing	4-19/32"	2-1/8"	\$44.99
NANF20723	1-7/16"	3-5/8" Bolt Spacing	4-19/32"	2-1/8"	\$42.99
NANF20824	1-1/2"	4-1/64" Bolt Spacing	5-1/8"	2-5/16"	\$49.99
NANF20926	1-5/8"	4-9/64" Bolt Spacing	5-13/32"	2-5/16"	\$64.99
NANF20928	1-3/4"	4-9/64" Bolt Spacing	5-13/32"	2-5/16"	\$54.99
NANF21031	1-15/16"	4-3/8" Bolt Spacing	5-5/8"	2-5/8"	\$67.99
NANF21032	2"	4-3/8" Bolt Spacing	5-5/8"	2-5/8"	\$67.99
NANF21132	2"	5-1/8" Bolt Spacing	6-3/8"	2-31/32"	\$87.99
NANF21135	2-3/16"	5-1/8" Bolt Spacing	6-3/8"	2-31/32"	\$92.99
NANF21236	2-1/4"	5-5/8" Bolt Spacing	6-7/8"	3-1/4"	\$124.99
NANF21239	2-7/16"	5-5/8" Bolt Spacing	6-7/8"	3-1/4"	\$109.99

Premium 4 Bolt Flange - Set Screw Lock, Extended Race

SKU #	Inner Diameter	Length	Overall Length	Height	List Price
UCF20516FYH	1"	2-3/4" Bolt Spacing	3-3/4"	1-13/32"	\$22.99
UCF20620FYH	1-1/4"	3-17/64" Bolt Spacing	4-1/4"	1-19/32"	\$29.99
UCF20720FYH	1-1/4"	3-5/8" Bolt Spacing	4-19/32"	1-3/4"	\$37.99
UCF20722FYH	1-3/8"	3-5/8" Bolt Spacing	4-19/32"	1-3/4"	\$37.99
UCF20824FYH	1-1/2"	4-1/64" Bolt Spacing	5-1/8"	2-1/32"	\$42.99
UCF20928FYH	1-3/4"	4-9/64" Bolt Spacing	5-13/32"	2-1/16"	\$47.99
UCF21030FYH	1-7/8"	4-3/8" Bolt Spacing	5-5/8"	2-5/32"	\$62.99
UCF21132FYH	2"	5-1/8" Bolt Spacing	6-3/8"	2-5/16"	\$69.99

TIMKEN

Premium 4 Bolt Flange - Locking Collar, Extended Race

- › Premium 4 Bolt Flange Bearing
- › Extended Race Insert
- › Cast Iron Housing



RCJ112

SKU #	Inner Diameter	Length	Overall Length	Height	List Price
RCJ34	3/4"	2-1/2" Bolt Spacing	3-3/8"	1-7/8"	\$72.99
RCJ1	1"	2-3/4" Bolt Spacing	3-3/4"	1-7/8"	\$72.99
RCJ118	1-1/8"	3-1/4" Bolt Spacing	4-1/4"	2"	\$98.99
RCJ114	1-1/4"	3-5/8" Bolt Spacing	4-5/8"	2-1/8"	\$98.99
RCJ138	1-3/8"	3-5/8" Bolt Spacing	4-5/8"	2-1/8"	\$101.99
RCJ112	1-1/2"	4" Bolt Spacing	5-1/8"	2-3/8"	\$104.99
RCJ134	1-3/4"	4-1/8" Bolt Spacing	5-3/8"	2-3/8"	\$161.99
RCJ2	2"	5-1/8" Bolt Spacing	6-3/8"	2-15/16"	\$169.99

For current prices and product availability, visit: <https://paulhardware.com/catalog-tool> 913

Bearings & Bushings

4 Bolt Flange Bearings

TIMKEN

Premium 4 Bolt Flange - Set Screw Lock, Extended Race

SKU #	Inner Diameter	Length	Overall Length	Height	List Price
YCJ1	1"	2-3/4" Bolt Spacing	3-3/4"	1-9/16"	\$65.85
YCJ114	1-1/4"	3-5/8" Bolt Spacing	4-5/8"	1-15/16"	\$99.49
YCJ112	1-1/2"	4" Bolt Spacing	5-1/8"	2-1/8"	\$111.99
YCJ134	1-3/4"	4-1/8" Bolt Spacing	5-3/8"	2-3/16"	\$109.99
YCJ2	2"	5-1/8" Bolt Spacing	6-3/8"	2-9/16"	\$144.99

SEALMASTER®

USA 4 Bolt Flange - Set Screw Lock

- > Premium 4 Bolt Flange Bearing
- > Standard Race Insert
- > Cast Iron Housing



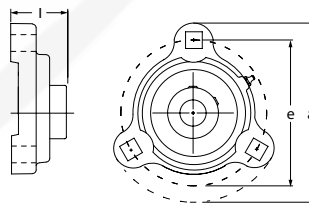
SMSF16

SKU #	Inner Diameter	Length	Overall Length	Height	List Price
SMSF16	1"	2-3/4" Bolt Spacing	3-3/4"	1-7/16"	\$104.99
SMSF20	1-1/4"	3-5/8" Bolt Spacing	4-5/8"	1-3/4"	\$144.99
SMSF22	1-3/8"	3-5/8" Bolt Spacing	4-5/8"	1-3/4"	\$144.99
SMSF23	1-7/16"	3-5/8" Bolt Spacing	4-5/8"	1-3/4"	\$144.99
SMSF24	1-1/2"	4" Bolt Spacing	5-1/8"	2-1/64"	\$154.99
SMSF28	1-3/4"	4-1/8" Bolt Spacing	5-3/8"	2-3/64"	\$181.99
SMSF31	1-15/16"	4-3/8" Bolt Spacing	5-5/8"	2-5/32"	\$207.99
SMSF32	2"	5-1/8" Bolt Spacing	6-3/8"	2-5/16"	\$244.99
SMSF39	2-7/16"	5-5/8" Bolt Spacing	6-7/8"	2-11/16"	\$289.99

3 Bolt Flange Bearings

Set Screw Lock

- > 3 Bolt Flange Bearing
- > Standard Race Insert
- > Cast Iron Housing



SBRFT20516GKML

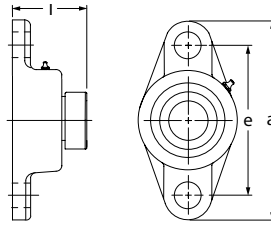
SKU #	Inner Diameter	Length	Overall Length	Height	List Price
SBRFT20516GKML	1"	3" Bolt Spacing	3-3/4"	1-7/32"	\$21.99
SBRFT20722GKML	1-3/8"	3-15/16" Bolt Spacing	4-13/16"	1-7/16"	\$29.99
SBRFT20618GKML	1-1/8"	3-9/16" Bolt Spacing	4-9/16"	1-5/16"	\$24.99
SBRFT20620GKML	1-1/4"	3-9/16" Bolt Spacing	4-9/16"	1-5/16"	\$24.99
SBRFT20412GKML	3/4"	2-13/16" Bolt Spacing	3-9/16"	1-3/16"	\$17.99
SBRFT20720GKML	1-1/4"	3-15/16" Bolt Spacing	4-13/16"	1-7/16"	\$29.99
SBRFT20514GKML	7/8"	3" Bolt Spacing	3-3/4"	1-7/32"	\$21.99

2 Bolt Flange Bearings



Compact 2 Bolt Flange - Locking Collar

- > 2 Bolt Flange Bearing
- > Standard Race Bearing
- > Compact Ductile Housing



SALF20516GKML

SKU #	Inner Diameter	Length	Overall Length	Height	List Price
SALF2018GKML	1/2"	2-1/2" Bolt Spacing	3-3/16"	1"	\$16.49
SALF20210GKML	5/8"	2-1/2" Bolt Spacing	3-3/16"	1"	\$14.99
SALF20412GKML	3/4"	2-13/16" Bolt Spacing	3-35/64"	1-3/16"	\$17.99
SALF20516GKML	1"	3" Bolt Spacing	3-3/4"	1-1/4"	\$17.49
SALF20618GKML	1-1/8"	3-9/16" Bolt Spacing	4-7/16"	1-11/32"	\$21.99
SALF20620GKML	1-1/4"	3-9/16" Bolt Spacing	4-7/16"	1-11/32"	\$21.99

Compact 2 Bolt Flange - Set Screw Lock



SBLF20516GKML

SKU #	Inner Diameter	Length	Overall Length	Height	List Price
SBLF20210GKML	5/8"	2-1/2" Bolt Spacing	3-3/16"	1"	\$14.49
SBLF20412GKML	3/4"	2-13/16" Bolt Spacing	3-35/64"	1-3/16"	\$14.49
SBLF20516GKML	1"	3" Bolt Spacing	3-3/4"	1-1/4"	\$16.99
SBLF20618GKML	1-1/8"	3-9/16" Bolt Spacing	4-7/16"	1-11/32"	\$17.49
SBLF20620GKML	1-1/4"	3-9/16" Bolt Spacing	4-7/16"	1-11/32"	\$19.99

Standard 2 Bolt Flange - Locking Collar

- > 2 Bolt Flange Bearing
- > Standard Race Bearing
- > Cast Iron Housing



SAFT20516GKML

SKU #	Inner Diameter	Length	Overall Length	Height	List Price
SAFT20412GKML	3/4"	3-35/64" Bolt Spacing	4-7/16"	1.694"	\$14.99
SAFT20514GKML	7/8"	3-57/64" Bolt Spacing	4-29/32"	1.694"	\$18.49
SAFT20516GKML	1"	3-57/64" Bolt Spacing	4-29/32"	1.694"	\$17.49
SAFT20618GKML	1-1/8"	4-15/32" Bolt Spacing	5-19/32"	1.872"	\$21.99
SAFT20620GKML	1-1/4"	4-15/32" Bolt Spacing	5-19/32"	1.872"	\$21.99
SAFT20720GKML	1-1/4"	5-1/8" Bolt Spacing	6-3/16"	2.01"	\$24.99
SAFT20722GKML	1-3/8"	5-1/8" Bolt Spacing	6-3/16"	2.01"	\$24.99
SAFT20824GKML	1-1/2"	5-41/64" Bolt Spacing	6-25/32"	2.304"	\$34.99

Bearings & Bushings

2 Bolt Flange Bearings



SBFT20516GKML

Standard 2 Bolt Flange - Set Screw Lock

SKU #	Inner Diameter	Length	Overall Length	Height	List Price
SBFT20412GKML	3/4"	3-17/32" Bolt Spacing	4-7/16"	1.28"	\$15.49
SBFT20516GKML	1"	3-57/64" Bolt Spacing	5-1/8"	1.40"	\$18.49
SBFT20618GKML	1-1/8"	4-19/32" Bolt Spacing	5-13/16"	1.54"	\$22.99
SBFT20620GKML	1-1/4"	4-19/32" Bolt Spacing	5-13/16"	1.54"	\$22.99

Standard 2 Bolt Flange - Set Screw Lock, Extended Race

- > 2 Bolt Flange Bearing
- > Extended Race Bearing
- > Cast Iron Housing



UCFL20516KML

SKU #	Inner Diameter	Length	Overall Length	Height	List Price
UCFL20516KML	1"	3-57/64" Bolt Spacing	5-1/8"	1-13/32"	\$18.49
UCFL20620KML	1-1/4"	4-19/32" Bolt Spacing	5-13/16"	1-37/64"	\$19.99
UCFL20722KML	1-3/8"	5-1/8" Bolt Spacing	6-11/32"	1-3/4"	\$27.99
UCFL21132KML	2"	7-1/4" Bolt Spacing	8-13/16"	2-9/32"	\$59.99

FYH

Premium 2 Bolt Flange - Locking Collar, Extended Race

- > Premium 2 Bolt Flange Bearing
- > Extended Race Insert
- > Cast Iron Housing



NANFL20516

SKU #	Inner Diameter	Length	Overall Length	Height	List Price
NANFL20210	5/8"	3-17/32" Bolt Spacing	4-7/16"	1-25/32"	\$27.99
NANFL20412	3/4"	3-17/32" Bolt Spacing	4-7/16"	1-25/32"	\$27.99
NANFL20514	7/8"	3-57/64" Bolt Spacing	5-1/8"	1-27/32"	\$29.99
NANFL20516	1"	3-57/64" Bolt Spacing	5-1/8"	1-27/32"	\$29.99
NANFL20618	1-1/8"	4-19/32" Bolt Spacing	5-13/16"	2"	\$37.99
NANFL20620	1-1/4"	4-19/32" Bolt Spacing	5-13/16"	2"	\$34.99
NANFL20720	1-1/4"	5-1/8" Bolt Spacing	6-11/32"	2-1/8"	\$44.99
NANFL20722	1-3/8"	5-1/8" Bolt Spacing	6-11/32"	2-1/8"	\$44.99
NANFL20723	1-7/16"	5-1/8" Bolt Spacing	6-11/32"	2-1/8"	\$42.99
NANFL20824	1-1/2"	5-21/32" Bolt Spacing	6-7/8"	2-5/16"	\$49.99
NANFL21132	2"	7-1/4" Bolt Spacing	8-13/16"	2-31/32"	\$87.99



Standard Insert Bearing - Set Screw Lock

SB20516GKML



SB20516KML



SKU #	Inner Diameter	Outer Diameter	Width	Style	List Price
SB2018KML	1/2"	40mm	7/8"	Pregreased	\$9.79
SB20210GKML	5/8"	40mm	31/32"	Greasable	\$9.49
SB20210KML	5/8"	40mm	31/32"	Pregreased	\$9.79
SB20412GKML	3/4"	47mm	1-1/16"	Greasable	\$9.99
SB20412KML	3/4"	47mm	1-1/16"	Pregreased	\$10.49
SB20514GKML	7/8"	52mm	1-1/16"	Greasable	\$11.99
SB20514KML	7/8"	52mm	1-1/16"	Pregreased	\$11.99
SB20516GKML	1"	52mm	1-1/16"	Greasable	\$11.49
SB20516KML	1"	52mm	1-1/16"	Pregreased	\$11.49
SB20618GKML	1-1/8"	62mm	1-3/16"	Greasable	\$14.49
SB20618KML	1-1/8"	62mm	1-3/16"	Pregreased	\$14.49
SB20620GKML	1-1/4"	62mm	1-3/16"	Greasable	\$13.49
SB20620KML	1-1/4"	62mm	1-3/16"	Pregreased	\$13.49
SB20720GKML	1-1/4"	72mm	1-1/4"	Greasable	\$16.99
SB20720KML	1-1/4"	72mm	1-1/4"	Pregreased	\$16.99
SB20722GKML	1-3/8"	72mm	1-1/4"	Greasable	\$16.99
SB20824GKML	1-1/2"	80mm	1-11/32"	Greasable	\$19.99

Standard Insert Bearing - Set Screw Lock, Extended Race



UC20516KML

SKU #	Inner Diameter	Outer Diameter	Width	Style	List Price
UC20210KML	5/8"	47mm	1-1/4"	Greasable	\$9.29
UC20412KML	3/4"	47mm	1-1/4"	Greasable	\$8.49
UC20514KML	7/8"	52mm	1-11/32"	Greasable	\$11.49
UC20516KML	1"	52mm	1-11/32"	Greasable	\$9.79
UC20618KML	1-1/8"	62mm	1-1/2"	Greasable	\$11.99
UC20620KML	1-1/4"	62mm	1-1/2"	Greasable	\$11.99
UC20720KML	1-1/4"	72mm	1-11/16"	Greasable	\$15.49
UC20722KML	1-3/8"	72mm	1-11/16"	Greasable	\$14.99
UC20723KML	1-7/16"	72mm	1-11/16"	Greasable	\$14.99
UC20824KML	1-1/2"	80mm	1-15/16"	Greasable	\$17.99
UC20928KML	1-3/4"	85mm	1-15/16"	Greasable	\$19.99
UC21031KML	1-15/16"	90mm	2-1/32"	Greasable	\$24.99
UC21132KML	2"	100mm	2-3/16"	Greasable	\$32.99

Bearings & Bushings

Set Screw Insert Bearings

FYH

Premium Insert Bearing - Set Screw Lock



SB20516K5

SKU #	Inner Diameter	Outer Diameter	Width	Style	List Price
SB20210KG5	5/8"	47mm	31/32"	Pregreased	\$12.99
SB20210KP8G5	5/8"	47mm	31/32"	Greasable	\$13.49
SB20412	3/4"	47mm	.984	Pregreased	\$12.99
SB20412KP8G5	3/4"	47mm	.984	Greasable	\$13.49
SB20420MM	20mm	47mm	.984"	Pregreased	\$13.49
SB20516K5	1"	52mm	1.063"	Pregreased	\$13.49
SB20516KP8G5	1"	52mm	1.063"	Greasable	\$13.99
SB20620KP8G5	1-1/4"	62mm	1.181"	Greasable	\$19.49
SB20525MM	25mm	52mm	1.063"	Pregreased	\$13.99
SB20618KP8G5	1-1/8"	62mm	1.181"	Pregreased	\$19.49
SB20720KG5	1-1/4"	72mm	1.260"	Pregreased	\$22.99
SB20720KP8G5	1-1/4"	72mm	1.260"	Greasable	\$24.99

Premium Insert Bearing - Set Screw Lock, Extended Race



UC20516FYH

SKU #	Inner Diameter	Outer Diameter	Width	Style	List Price
UC20210FYH	5/8"	47mm	1.22"	Greasable	\$14.49
UC20412FYH	3/4"	47mm	1.22"	Greasable	\$13.99
UC20420MM	20mm	47mm	1.22"	Greasable	\$14.49
UC20516FYH	1"	52mm	1.343"	Greasable	\$15.99
UC20525MM	25mm	52mm	1.343"	Greasable	\$16.49
UC20618FYH	1-1/8"	62mm	1.50"	Greasable	\$19.99
UC20620FYH	1-1/4"	62mm	1.50"	Greasable	\$19.49
UC20630MM	30mm	62mm	1.50"	Greasable	\$19.99
UC20720FYH	1-1/4"	72mm	1.689"	Greasable	\$24.99
UC20722FYH	1-3/8"	72mm	1.689"	Greasable	\$24.99
UC20723FYH	1-7/16"	72mm	1.689"	Greasable	\$24.99
UC20735MM	35mm	72mm	1.689"	Greasable	\$27.99
UC20824FYH	1-1/2"	80mm	1.937"	Greasable	\$29.99
UC20840MM	40mm	80mm	1.937"	Greasable	\$32.99
UC20928FYH	1-3/4"	85mm	1.937"	Greasable	\$32.99
UC20945MM	45mm	85mm	1.937"	Greasable	\$34.99
UC21030FYH	1-7/8"	90mm	2.031"	Greasable	\$47.99
UC21031FYH	1-15/16"	90mm	2.031"	Greasable	\$39.99
UC21132FYH	2"	100mm	2.189"	Greasable	\$52.99
UC21135FYH	2-3/16"	100mm	2.189"	Greasable	\$54.99
UC21340FYH	2-1/2"	120mm	2.563"	Greasable	\$87.99
UC21547FYH	2-15/16"	130mm	3.063"	Greasable	\$104.99

For current prices and product availability, visit: <https://paulhardware.com/catalog-tool>



Triple Lip Seal Insert Bearing - Set Screw Lock, Extended Race

- › Triple Lip Seal Insert Bearing
- › Corrosion Resistant Black Oxide Coating
- › Great For Agricultural Applications



UC20516R3BOKML

SKU #	Inner Diameter	Outer Diameter	Width	Style	List Price
UC20516R3BOKML	1"	52mm	1-11/32"	Greasable	\$17.49
UC20720R3BOKML	1-1/4"	72mm	1-11/16"	Greasable	\$24.99
UC20723R3BOKML	1-7/16"	72mm	1-11/16"	Greasable	\$24.99
UC20824R3BOKML	1-1/2"	80mm	1-15/16"	Greasable	\$27.99
UC20928R3BOKML	1-3/4"	85mm	1-15/16"	Greasable	\$34.99
UC21132R3BOKML	2"	100mm	2-3/16"	Greasable	\$49.99

Lock Collar Insert Bearings



Standard Insert Bearing - Locking Collar



SA20516GKML

SA20516KML

SKU #	Inner Diameter	Outer Diameter	Width	Style	List Price
SA2018GKML	1/2"	40mm	1-1/8"	Greasable	\$8.99
SA2018KML	1/2"	40mm	1-1/8"	Pregreased	\$9.79
SA20210GKML	5/8"	40mm	1-1/8"	Greasable	\$8.79
SA20210KML	5/8"	40mm	1-1/8"	Pregreased	\$8.79
SA20412GKML	3/4"	47mm	1-1/4"	Greasable	\$9.49
SA20412KML	3/4"	47mm	1-1/4"	Pregreased	\$9.49
SA20514GKML	7/8"	52mm	1-1/4"	Greasable	\$11.99
SA20514KML	7/8"	52mm	1-1/4"	Pregreased	\$11.99
SA20515GKML	15/16"	52mm	1-1/4"	Greasable	\$12.49
SA20515KML	15/16"	52mm	1-1/4"	Pregreased	\$11.99
SA20516GKML	1"	52mm	1-1/4"	Greasable	\$11.99
SA20516KML	1"	52mm	1-1/4"	Pregreased	\$11.99
SA20617GKML	1-1/16"	62mm	1-13/32"	Greasable	\$14.49
SA20618GKML	1-1/8"	62mm	1-13/32"	Greasable	\$12.99
SA20618KML	1-1/8"	62mm	1-13/32"	Pregreased	\$12.99

continued on next page...

Bearings & Bushings

Lock Collar Insert Bearings

...continued from previous page

SKU #	Inner Diameter	Outer Diameter	Width	Style	List Price
SA20619GKML	1-3/16"	62mm	1-13/32"	Greasable	\$12.99
SA20619KML	1-3/16"	62mm	1-13/32"	Pregreased	\$13.49
SA20620GKML	1-1/4"	62mm	1-13/32"	Greasable	\$13.49
SA20620KML	1-1/4"	62mm	1-13/32"	Pregreased	\$12.99
SA20720GKML	1-1/4"	72mm	1-17/32"	Greasable	\$15.49
SA20720KML	1-1/4"	72mm	1-17/32"	Pregreased	\$15.49
SA20722GKML	1-3/8"	72mm	1-17/32"	Greasable	\$15.49
SA20722KML	1-3/8"	72mm	1-17/32"	Pregreased	\$16.49
SA20723GKML	1-7/16"	72mm	1-17/32"	Greasable	\$17.99
SA20723KML	1-7/16"	72mm	1-17/32"	Pregreased	\$16.49
SA20824GKML	1-1/2"	80mm	1-23/32"	Greasable	\$19.49
SA20824KML	1-1/2"	80mm	1-23/32"	Pregreased	\$19.49
SA20825GKML	1-9/16"	80mm	1-23/32"	Greasable	\$21.99
SA20928GKML	1-3/4"	85mm	1-23/32"	Greasable	\$22.99
SA20928KML	1-3/4"	85mm	1-23/32"	Pregreased	\$22.99
SA21032GKML	2"	90mm	1-23/32"	Greasable	\$29.99
SA21032KML	2"	90mm	1-23/32"	Pregreased	\$29.99



Standard Insert Bearing -
Locking Collar, Extended Race



HC20516KML

SKU #	Inner Diameter	Outer Diameter	Width	Style	List Price
HC20412KML	3/4"	47mm	1-23/32"	Greasable	\$9.79
HC20514KML	7/8"	52mm	1-3/4"	Greasable	\$11.49
HC20516KML	1"	52mm	1-3/4"	Greasable	\$10.99
HC20618KML	1-1/8"	62mm	1-29/32"	Greasable	\$13.49
HC20619KML	1-3/16"	62mm	1-29/32"	Greasable	\$14.49
HC20620KML	1-1/4"	62mm	1-29/32"	Greasable	\$13.49
HC20720KML	1-1/4"	72mm	2-1/64"	Greasable	\$15.49
HC20722KML	1-3/8"	72mm	2-1/64"	Greasable	\$15.49
HC20723KML	1-7/16"	72mm	2-1/64"	Greasable	\$16.49
HC20824KML	1-1/2"	80mm	2-7/32"	Greasable	\$18.99
HC20926KML	1-5/8"	85mm	2-7/32"	Greasable	\$24.99
HC20927KML	1-11/16"	85mm	2-7/32"	Greasable	\$25.99
HC20928KML	1-3/4"	85mm	2-7/32"	Greasable	\$24.99
HC21030KML	1-7/8"	90mm	2-7/32"	Greasable	\$29.99
HC21031KML	1-15/16"	90mm	2-7/32"	Greasable	\$29.99
HC21032KML	2"	90mm	2-7/32"	Greasable	\$29.99
HC21132KML	2"	100mm	2-15/32"	Greasable	\$34.99

Lock Collar Insert Bearings

FYH



SA20516FP9



SA20516FP7

Premium Insert Bearing - Locking Collar

SKU #	Inner Diameter	Outer Diameter	Width	Style	List Price
SA2018	1/2"	40mm	1.122"	Pregreased	\$13.49
SA20210FP7	5/8"	40mm	1.122"	Pregreased	\$13.49
SA20210FP9	5/8"	40mm	1.122"	Greasable	\$13.99
SA20412FP7	3/4"	47mm	1.161"	Pregreased	\$13.49
SA20514FP7	7/8"	52mm	1.201"	Pregreased	\$14.99
SA20514FP9	7/8"	52mm	1.201"	Greasable	\$15.99
SA20515FP7	15/16"	52mm	1.201"	Pregreased	\$15.99
SA20516FP7	1"	52mm	1.201"	Pregreased	\$14.49
SA20516FP9	1"	52mm	1.201"	Greasable	\$14.99
SA20617FP7	1-1/16"	62mm	1.335"	Pregreased	\$19.99
SA20618FP7	1-1/8"	62mm	1.335"	Pregreased	\$19.99
SA20618FP9	1-1/8"	62mm	1.335"	Greasable	\$19.99
SA20619FP7	1-3/16"	62mm	1.335"	Pregreased	\$18.99
SA20619FP9	1-3/16"	62mm	1.335"	Greasable	\$19.99
SA20620FP7	1-1/4"	62mm	1.335"	Pregreased	\$19.99
SA20620FP9	1-1/4"	62mm	1.437"	Greasable	\$19.99
SA20720FP7	1-1/4"	72mm	1.437"	Pregreased	\$24.99
SA20720FP9	1-1/4"	72mm	1.437"	Greasable	\$27.99
SA20721FP7	1-5/16"	72mm	1.437"	Pregreased	\$27.99
SA20722FP7	1-3/8"	72mm	1.437"	Pregreased	\$24.99
SA20722FP9	1-3/8"	72mm	1.437"	Greasable	\$27.99
SA20723FP7	1-7/16"	72mm	1.437"	Pregreased	\$24.99
SA20723FP9	1-7/16"	72mm	1.437"	Greasable	\$24.99
SA20824FP7	1-1/2"	80mm	1.595"	Pregreased	\$29.99
SA20824FP9	1-1/2"	80mm	1.595"	Greasable	\$32.99
SA20926FP7	1-5/8"	85mm	1.720"	Pregreased	\$37.99
SA20928FP7	1-3/4"	85mm	1.720"	Pregreased	\$34.99
SA20928FP9	1-3/4"	85mm	1.720"	Greasable	\$34.99

FYH

Premium Insert Bearing - Locking Collar, Extended Race

SKU #	Inner Diameter	Outer Diameter	Width	Style	List Price
NA2018	1/2"	47mm	1.720"	Greasable	\$17.49
NA20210	5/8"	47mm	1.720"	Greasable	\$17.49
NA20412	3/4"	47mm	1.720"	Greasable	\$16.49
NA20514	7/8"	52mm	1.748"	Greasable	\$18.49
NA20515	15/16"	52mm	1.748"	Greasable	\$19.99

For current prices and product availability, visit: <https://paulhardware.com/catalog-tool> 921

Bearings & Bushings

Lock Collar Insert Bearings

FYH



NA20516

SKU #	Inner Diameter	Outer Diameter	Width	Style	List Price
NA20516	1"	52mm	1.748"	Greasable	\$17.49
NA20617	1-1/16"	62mm	1.906"	Greasable	\$24.99
NA20618	1-1/8"	62mm	1.906"	Greasable	\$22.99
NA20619	1-3/16"	62mm	1.906"	Greasable	\$19.99
NA20620	1-1/4"	62mm	1.906"	Greasable	\$19.99
NA20720	1-1/4"	72mm	2.012"	Greasable	\$27.99
NA20721	1-5/16"	72mm	2-1/64"	Greasable	\$29.99
NA20722	1-3/8"	72mm	2-1/64"	Greasable	\$27.99
NA20723	1-7/16"	72mm	2-1/64"	Greasable	\$27.99
NA20735MM	35mm	72mm	2-1/64"	Greasable	\$27.99
NA20824	1-1/2"	80mm	2.217"	Greasable	\$34.99
NA20825	1-9/16"	80mm	2.217"	Greasable	\$39.99
NA20840MM	40mm	80mm	2.217"	Greasable	\$34.99
NA20926	1-5/8"	85mm	2.217"	Greasable	\$39.99
NA20927	1-11/16"	85mm	2.217"	Greasable	\$37.99
NA20928	1-3/4"	85mm	2.217"	Greasable	\$37.99
NA21030	1-7/8"	90mm	2.469"	Greasable	\$49.99
NA21031	1-15/16"	90mm	2.469"	Greasable	\$44.99
NA21132	2"	100mm	2.811"	Greasable	\$57.99
NA21135	2-3/16"	100mm	2.811"	Greasable	\$59.99
NA21236	2-1/4"	110mm	3.063"	Greasable	\$82.99
NA21239	2-7/16"	110mm	3.063"	Greasable	\$69.99
NA21547	2-15/16"	130mm	3.626"	Greasable	\$114.99

TIMKEN

Premium Insert Bearing - Locking Collar



RA104RRB



GRA100RRB

SKU #	Inner Diameter	Outer Diameter	Width	Style	List Price
GRA012RRB	3/4"	47mm	1.22"	Greasable	\$24.99
GRA100RRB	1"	52mm	1.22"	Greasable	\$18.99
GRA102RRB	1-1/8"	62mm	1.406"	Greasable	\$28.99
GRA103RRB2	1-1/4"	62mm	1.406"	Greasable	\$25.99
GRA104RRB	1-1/4"	72mm	1.531"	Greasable	\$41.99
GRA106RRB	1-3/8"	72mm	1.531"	Greasable	\$39.99
GRA108RRB	1-1/2"	80mm	1.720"	Greasable	\$45.99
GRA112RRB	1-3/4"	85mm	1.720"	Greasable	\$54.99

continued on next page...

Lock Collar Insert Bearings

...continued from previous page

SKU #	Inner Diameter	Outer Diameter	Width	Style	List Price
RA014RRB	7/8"	52mm	1.22"	Pregreased	\$18.49
RA100RRB	1"	52mm	1.22"	Pregreased	\$15.79
RA102RRB	1-1/8"	62mm	1.406"	Pregreased	\$24.99
RA103RRB2	1-1/4"	62mm	1.406"	Pregreased	\$23.49
RA104RRB	1-1/4"	72mm	1.531"	Pregreased	\$30.99
RA106RRB	1-3/8"	72mm	1.531"	Pregreased	\$37.99
RA108RRB	1-1/2"	80mm	1.72"	Pregreased	\$39.99
RA112RRB	1-3/4"	85mm	1.72"	Pregreased	\$60.99

TIMKEN

Premium Insert Bearing - Locking Collar, Extended Race



G1100KRRB

SKU #	Inner Diameter	Outer Diameter	Width	Style	List Price
G1100KRRB	1"	52mm	1.748"	Greasable	\$31.05
G1103KRRB3	1-1/4"	62mm	1.906"	Greasable	\$36.49
G1104KRRB	1-1/4"	72mm	2.016"	Greasable	\$47.99
G1106KRRB	1-3/8"	72mm	2.016"	Greasable	\$48.99
G1108KRRB	1-1/2"	80mm	2.22"	Greasable	\$54.99
G1112KRRB	1-3/4"	85mm	2.22"	Greasable	\$70.40



Standard Flat OD Insert Bearing - Locking Collar



CSA20516KML

SKU #	Inner Diameter	Outer Diameter	Width	Style	List Price
CSA2018KML	1/2"	40mm	1-1/8"	Pregreased	\$9.79
CSA20210KML	5/8"	40mm	1-1/8"	Pregreased	\$8.79
CSA20412KML	3/4"	47mm	1-1/4"	Pregreased	\$9.29
CSA20514KML	7/8"	52mm	1-1/4"	Pregreased	\$10.49
CSA20516KML	1"	52mm	1-1/4"	Pregreased	\$10.49
CSA20618KML	1-1/8"	62mm	1-13/32"	Pregreased	\$12.99
CSA20620KML	1-1/4"	62mm	1-13/32"	Pregreased	\$11.99
CSA20722KML	1-3/8"	72mm	1-17/32"	Pregreased	\$18.49
CSA20723KML	1-7/16"	72mm	1-17/32"	Pregreased	\$18.49
CSA20824KML	1-1/2"	80mm	1-23/32"	Pregreased	\$19.99

Bearings & Bushings

Lock Collar Insert Bearings

FYH

Premium Flat OD Insert Bearing - Locking Collar



SAA20516

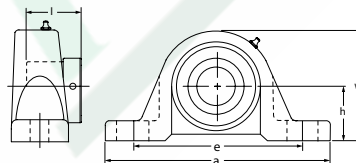
SKU #	Inner Diameter	Outer Diameter	Width	Style	List Price
SAA2018	1/2"	40mm	1.13"	Pregreased	\$13.99
SAA20210	5/8"	40mm	1.13"	Pregreased	\$13.99
SAA20412	3/4"	47mm	1.22"	Pregreased	\$13.99
SAA20516	1"	52mm	1.22"	Pregreased	\$14.99
SAA20618	1-1/8"	62mm	1.406"	Pregreased	\$19.99
SAA20620	1-1/4"	62mm	1.406"	Pregreased	\$19.99
SAA20722	1-3/8"	72mm	1.531"	Pregreased	\$27.99
SAA20824	1-1/2"	80mm	1.720"	Pregreased	\$32.99

Stainless Steel Bearings



Set Screw Lock, Extended Race

- › Pillow Block Bearing
- › 304 Grade Housing, 440C Bearing
- › Metal Backed Silicone Rubber Barrier Seal
- › Great For Wet Or Corrosive Environments & Food Processing Equipment



SSUCP20516KML

SKU #	Inner Diameter	Length	Overall Length	Height	List Price
SSUCP20516KML	1"	4-1/8" Bolt Spacing	5-1/2"	2-3/4"	\$104.99
SSUCP20620KML	1-1/4"	4-49/64" Bolt Spacing	6-1/2"	3-9/32"	\$154.99

Set Screw Lock, Extended Race

- › 2 Bolt Flange Bearing
- › 304 Grade Housing, 440C Bearing
- › Metal Backed Silicone Rubber Barrier Seal
- › Great For Wet Or Corrosive Environments & Food Processing Equipment



SSUCFL20516KML

SKU #	Inner Diameter	Length	Overall Length	Height	List Price
SSUCFL20516KML	1"	3-57/64" Bolt Spacing	5-1/8"	1-13/32"	\$99.99
SSUCFL20620KML	1-1/4"	4-19/32" Bolt Spacing	5-13/16"	1-37/64"	\$139.99

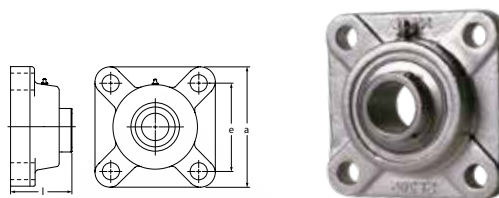
924 For current prices and product availability, visit: <https://paulhardware.com/catalog-tool>

Bearings & Bushings

Stainless Steel Bearings



- > 4 Bolt Flange Bearing
- > 304 Grade Housing, 440C Bearing
- > Metal Backed Silicone Rubber Barrier Seal
- > Great For Wet Or Corrosive Environments & Food Processing Equipment



SSUCF20516KML

SKU #	Inner Diameter	Length	Overall Length	Height	List Price
SSUCF20516KML	1"	2-3/4" Bolt Spacing	3-3/4"	1-13/32"	\$99.99
SSUCF20620KML	1-1/4"	3-9/32" Bolt Spacing	4-1/4"	1-49/64"	\$139.99

Set Screw Lock, Extended Race

- > Stainless Steel Insert Bearing
- > 304 Grade Housing, 440C Bearing
- > Metal Backed Silicone Rubber Barrier Seal
- > Great For Wet Or Corrosive Environments & Food Processing Equipment



SSUC20516KML

SKU #	Inner Diameter	Outer Diameter	List Price	SKU #	Inner Diameter	Outer Diameter	List Price
SSUC2018KML	1/2"	47 mm	\$39.99	SSUC20516KML	1"	52 mm	\$42.99
SSUC20210KML	5/8"	47 mm	\$39.99	SSUC20618KML	1-1/8"	62 mm	\$59.99
SSUC20412KML	3/4"	47 mm	\$39.99	SSUC20620KML	1-1/4"	62mm	\$59.99
SSUC20514KML	7/8"	52 mm	\$42.99	SSUC20824KML	1-1/2"	80 mm	\$99.99

Stainless Steel Pillow Block Housing



SSP205KML

SKU #	Inner Diameter	Length	Overall Length	Height	List Price
SSP204KML	47 mm	3-3/4" Bolt Spacing	5"	2-9/16"	\$57.99
SSP205KML	52 mm	4-1/8" Bolt Spacing	5-1/2"	2-3/4"	\$64.99
SSP206KML	62 mm	4-49/64" Bolt Spacing	6-1/2"	3-9/32"	\$99.99
SSP208KML	85 mm	5-25/64" Bolt Spacing	7-1/4"	3-15/16"	\$149.99

Stainless Steel 4 Bolt Flange Housing



SSF205KML

SKU #	Length	Overall Length	List Price	SKU #	Length	Overall Length	List Price
SSF204KML	2-1/2" Bolt Spacing	3-3/8"	\$49.99	SSF206KML	3-1/4" Bolt Spacing	4-1/4"	\$79.99
SSF205KML	2-3/4" Bolt Spacing	3-3/4"	\$59.99	SSF208KML	4" Bolt Spacing	5-1/4"	\$119.99

For current prices and product availability, visit: <https://paulhardware.com/catalog-tool> 925

Bearings & Bushings

Stainless Steel Bearings



S62052RSKML

Stainless Steel Radial Ball Bearing

SKU #	Inner Diameter	Outer Diameter	Width	List Price	SKU #	Inner Diameter	Outer Diameter	Width	List Price
S60032RSKML	17 mm	35 mm	10 mm	\$9.99	S62042RSKML	20 mm	47 mm	14 mm	\$14.99
S60042RSKML	20 mm	42 mm	12 mm	\$14.99	S62052RSKML	25 mm	52 mm	15 mm	\$16.99
S62022RSKML	15 mm	35 mm	11 mm	\$12.49	S62062RSKML	30 mm	62 mm	16 mm	\$32.99
S62032RSKML	17 mm	40 mm	12 mm	\$12.99					

Spherical Bearings



- › Spherical Roller Pillow Block Bearing
- › Self-Aligning Capabilities
- › Converts Expansion/Non-Expansion
- › Triple Lip Seal Positive Contact Seal
- › For Heavy-Duty Applications



XS2P40824

SKU #	Inner Diameter	Length	Overall Length	Mounting	Height	Features	List Price
XS2P40822	1-3/8"	5-9/32" Bolt Spacing	7-3/8"	1-7/8" Center Line	3-3/4"	Locking Collar	\$199.99
XS2P40823	1-7/16"	5-9/32" Bolt Spacing	7-3/8"	1-7/8" Center Line	3-3/4"	Locking Collar	\$199.99
XS2P40824	1-1/2"	5-9/32" Bolt Spacing	7-3/8"	1-7/8" Center Line	3-3/4"	Locking Collar	\$199.99
XS2P41031	1-15/16"	6-17/32" Bolt Spacing	8-29/32"	2-1/4" Center Line	4-1/2"	Locking Collar	\$249.99
XS2P41032	2"	6-17/32" Bolt Spacing	8-29/32"	2-1/4" Center Line	4-1/2"	Locking Collar	\$249.99
XS2P41339	2-7/16"	7-11/16" Bolt Spacing	10-1/4"	2-3/4" Center Line	5-19/32"	Locking Collar	\$299.99

- › Spherical Roller 4 Bolt Flange Bearing
- › Self-Aligning Capabilities
- › Converts Expansion/Non-Expansion
- › Triple Lip Seal Positive Contact Seal
- › For Heavy-Duty Applications



XS4F41032

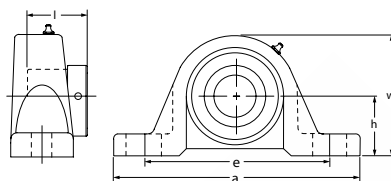
SKU #	Inner Diameter	Length	Overall Length	Height	List Price
XS4F40822	1-3/8"	3-17/32" Bolt Spacing	4-3/4"	2-3/4"	\$199.99
XS4F40823	1-7/16"	3-17/32" Bolt Spacing	4-3/4"	2-3/4"	\$199.99
XS4F40824	1-1/2"	3-17/32" Bolt Spacing	4-3/4"	2-3/4"	\$199.99
XS4F41031	1-15/16"	4-1/16" Bolt Spacing	5-5/16"	3-5/32"	\$249.99
XS4F41032	2"	4-1/16" Bolt Spacing	5-5/16"	3-5/32"	\$249.99
XS4F41339	2-7/16"	4-25/" Bolt Spacing	6-1/8"	3-17/32"	\$299.99

Bearings & Bushings

Type-E Bearings



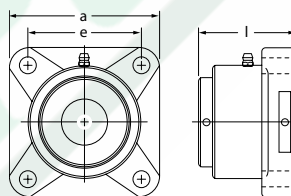
- › Type E Pillow Block
- › For The Most Demanding Applications
- › Heavy-Duty Cast Iron Housing
- › Dual Lip Medium Contact Seals
- › Uses Timken Roller Bearings



20020200

SKU #	Inner Diameter	Length	Overall Length	Mounting	Height	List Price
20020112	1-3/4"	7" Bolt Spacing	8-7/8"	2-1/4" Center Line	4-1/2"	\$264.99
20020115	1-15/16"	7" Bolt Spacing	8-7/8"	2-1/4" Center Line	4-1/2"	\$259.99
20020200	2"	7" Bolt Spacing	8-7/8"	2-1/4" Center Line	4-1/2"	\$259.99
20020203	2-3/16"	7-3/4" Bolt Spacing	9-5/8"	2-1/2" Center Line	5"	\$289.99
20020207	2-7/16"	8-1/2" Bolt Spacing	10-1/2"	2-3/4" Center Line	5-1/2"	\$329.99
20020215	2-15/16"	9-1/2" Bolt Spacing	12"	3-1/8" Center Line	5-1/2"	\$499.99
20020300	3"	9-1/2" Bolt Spacing	12"	3-1/8" Center Line	6-1/4"	\$499.99
20020307	3-7/16"	11" Bolt Spacing	14"	3-3/4" Center Line	7-1/2"	\$642.61

- › Type E 4 Bolt Flange Bearing
- › For The Most Demanding Applications
- › Heavy-Duty Cast Iron Housing
- › Dual Lip Medium Contact Seals
- › Uses Timken Roller Bearings



20050200

SKU #	Inner Diameter	Length	Overall Length	Height	List Price
20050112	1-3/4"	4-3/8" Bolt Spacing	5-5/8"	3-5/8"	\$269.99
20050200	2"	4-3/8" Bolt Spacing	5-5/8"	3-5/8"	\$269.99
20050215	2-15/16"	6" Bolt Spacing	7-3/4"	4-11/16"	\$499.99
20050307	3-7/16"	7" Bolt Spacing	9-1/4"	5-1/4"	\$749.99

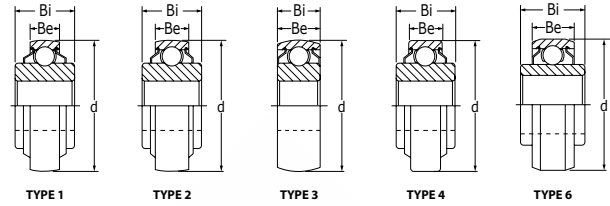
Bearings & Bushings

Agricultural Bearings



TIMKEN

- > Agricultural Implement/Disc Bearing
- > Triple Lip Seals Protect Against Dust And Dirt



Hex Bore Ag Bearing



206KRRB6KML

SKU #	Inner Diameter	Outer Diameter	Width	Style	Brand	List Price
206KRR6KML	1"	62 mm	.945" Inner, .63" Outer Race	Flat OD	KML	\$11.99
205KRRB2	7/8	52 mm	1" Inner, .591" Outer Race	Spherical OD	KML	\$12.99
205KRRB2TK	7/8"	52 mm	1" Inner, .591" Outer Race	Spherical OD	Timken	\$31.99
206KRRB6KML	1"	62 mm	.945" Inner, .63" Outer Race	Spherical OD	KML	\$12.49
207KRRB12	1-1/8"	72 mm	.984" Inner, .67" Outer Race	Spherical OD	KML	\$22.99
207KRRB17	1-1/4"	72 mm	.984" Inner, .67" Outer Race	Spherical OD	KML	\$22.99
207KRRB17TK	1-1/4"	72 mm	.984" Inner, .67" Outer Race	Spherical OD	Timken	\$47.99



TIMKEN

Round Bore Ag Bearing



W209PPB4



W208PPB7KML



GW211PPB13KML

SKU #	Inner Diameter	Outer Diameter	Width	Style	Brand	List Price
203RR3TK	5/8"	2"	.59"	Flat OD	Timken	\$29.99
205KRP2TK	3/4"	2.0472"	.83" Inner, .59" Outer Race	Flat OD	Timken	\$17.99
203KRR2KML	.64"	40 mm	.72" Inner, .472" Outer Race	Flat OD	KML	\$5.79
W208PPB6KML	1"	80 mm	1.438" Inner, .709" Outer Race	Spherical OD	KML	\$21.99
W208PPB7KML	1-3/16"	80 mm	1.188" Inner, .709" Outer Race	Spherical OD	KML	\$21.99
W208PPB7	1-3/16"	80 mm	1.188" Inner, .709" Outer Race	Spherical OD	Timken	\$47.99
W209PPB4KML	1.535"	85 mm	1.188"	Spherical OD	KML	\$27.99
W209PPB4	1.535"	85 mm	1.188"	Spherical OD	Timken	\$54.99
GW211PPB13KML	1.785"	100 mm	1.312" Inner, .984" Outer Race	Spherical OD	KML	\$37.99
W210PPB2	1.938"	90 mm	1.188"	Spherical OD	Timken	\$71.25

BEARINGS & BUSHINGS

Bearings & Bushings

Agricultural Bearings



W208PP8KML



GW208PPB5KML

Square Bore Ag Bearing

SKU #	Inner Diameter	Outer Diameter	Width	Style	Brand	List Price
W208PPB11	7/8"	3.376"	1.437" Inner, 1.89" Outer Race	Spherical OD	Timken	\$57.99
W208PP5KML	1-1/8"	80 mm	1.438" Inner, .709" Outer Race	Flat OD	KML	\$22.99
W208PP5	1-1/8"	80 mm	1.438" Inner, .709" Outer Race	Flat OD	Timken	\$35.72
W208PP8KML	1-1/8"	80 mm	1.438" Inner, 1.188" Outer Race	Flat OD	KML	\$21.99
W208PP8	1-1/8"	80 mm	1.438" Inner, 1.188" Outer Race	Flat OD	Timken	\$46.99
W208PPB5	1-1/8"	80 mm	1.438" Inner, .709" Outer Race	Spherical OD	Timken	\$33.99
W208PPB5KML	1-1/8"	80 mm	1.438" Inner, .709" Outer Race	Spherical OD	KML	\$21.99
GW208PPB5KML	1-1/8"	80 mm	1.438" Inner, .827" Outer Race	Spherical OD	KML	\$22.99
W208PPB8KML	1-1/8"	80 mm	1.438" Inner, 1.188" Outer Race	Spherical OD	KML	\$21.99
GW209PPB5KML	1-1/4"	85 mm	1.438" Inner, 1.188" Outer Race	Spherical OD	KML	\$27.99
W209PPB5KML	1-1/4"	85 mm	1.438" Inner, 1.188" Outer Race	Spherical OD	KML	\$27.99
W211PPB3KML	1-1/2"	100 mm	1.312"	Spherical OD	KML	\$34.99
GW211PP3	1-1/2"	100 mm	1.312"	Spherical OD	Timken	\$82.99
GW209PPB4KML	1.535"	85 mm	1.188"	Spherical OD	KML	\$24.99
GW209PPB11KML	1.781"	85 mm	1.438" Inner, .866" Outer Race	Spherical OD	KML	\$25.99
GW209PPB11	1.781"	85 mm	1.438" Inner, .866" Outer Race	Spherical OD	Timken	\$42.99

Bearing Housings



PE205KML

Pillow Block, Housing Only

SKU #	Inner Diameter	Length	Overall Length	Height	List Price
PE204KML	47 mm	3-3/4" Bolt Spacing	5"	2-9/16"	\$7.79
PE205KML	52 mm	4-1/8" Bolt Spacing	5-1/2"	2-3/4"	\$9.49
PE206KML	62 mm	4-49/64" Bolt Spacing	6-1/2"	3-9/32"	\$11.99
PE207KML	72 mm	5" Bolt Spacing	6-9/16"	3-11/16"	\$15.99
PE208KML	80 mm	5-25/64" Bolt Spacing	7-1/4"	3-15/16"	\$18.99
PE209KML	85 mm	5-3/4" Bolt Spacing	7-15/32"	4-1/4"	\$19.99
PE210KML	90 mm	6-1/4" Bolt Spacing	8-1/8"	4-1/2"	\$27.99
PE211KML	100 mm	6-23/32" Bolt Spacing	8-5/8"	4-31/32"	\$34.99
PE212KML	110 mm	7-1/4" Bolt Spacing	9-1/2"	5-7/16"	\$34.99

Bearings & Bushings

Bearing Housings

2 Bolt Flange, Housing Only



FL205KML

SKU #	Inner Diameter	Length	Overall Length	Height	List Price
FL204KML	47 mm	3-17/32" Bolt Spacing	4-7/16"	1"	\$7.79
FL205KML	52 mm	3-57/64" Bolt Spacing	5-1/8"	1-1/16"	\$9.29
FL206KML	62 mm	4-19/32"	5-13/16"	1-1/4"	\$10.99
FL207KML	72 mm	5-1/8" Bolt Spacing	6-11/32"	1-11/32"	\$12.99
FL208KML	80 mm	5-11/16" Bolt Spacing	6-7/8"	1-13/32"	\$14.99
FL209KML	85 mm	5-13/16" Bolt Spacing	7-13/32"	1-1/2"	\$18.99
FL210KML	90 mm	6-3/16" Bolt Spacing	7-3/4"	1-9/16"	\$22.99
FL211KML	100 mm	7-1/4" Bolt Spacing	8-13/16"	1-11/16"	\$27.99

3 Bolt Flange, Housing Only



RFT205KML

SKU #	Inner Diameter	Length	Overall Length	Height	List Price
RFT204KML	47 mm	2-13/16" Bolt Spacing	3-9/16"	31/32"	\$11.49
RFT205KML	52 mm	3" Bolt Spacing	3-3/4"	1-1/16"	\$12.49
RFT206KML	62 mm	3-9/16" Bolt Spacing	4-9/16"	1-3/16"	\$15.49
RFT207KML	72 mm	3-15/16" Bolt Spacing	4-13/16"	1-1/4"	\$18.49

4 Bolt Flange, Housing Only



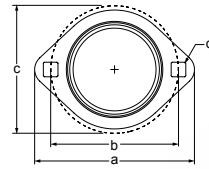
FS205KML

SKU #	Inner Diameter	Length	Overall Length	Height	List Price
FS204KML	47 mm	2-1/2" Bolt Spacing	3-25/64"	1-33/64"	\$7.79
FS205KML	52 mm	2-3/4" Bolt Spacing	3-43/61"	1-13/16"	\$9.49
FS206KML	62 mm	3-1/4" Bolt Spacing	4-11/64"	1-31/32"	\$12.49
FS207KML	72 mm	3-5/8" Bolt Spacing	4-9/16"	2-7/64"	\$14.99
FS208KML	80 mm	4" Bolt Spacing	5-5/64"	2-21/64"	\$15.49
FS209KML	85 mm	4-1/8" Bolt Spacing	5-5/16"	2-21/64"	\$19.49
FS210KML	90 mm	4-3/8" Bolt Spacing	5-5/8"	2-19/32"	\$24.99
FS211KML	100 mm	5-1/8" Bolt Spacing	6-3/8"	2-15/16"	\$29.99

Pressed Steel Bearing Flanges

- › Pressed Steel Bearing Flangette
- › Primarily Used On Implements
- › Zinc Plated

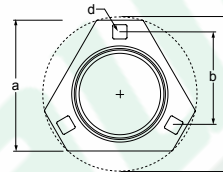
2 Bolt Flange



52MST

SKU #	Inner Diameter	Length	Overall Length	Width	List Price
40MST	40mm	2-1/2" Bolt Spacing	3-3/16"	2-5/16"	\$1.29
47MST	47mm	2-13/16" Bolt Spacing	3-9/16"	2-5/8"	\$1.49
52MST	52mm	3" Bolt Spacing	3-3/4"	2-51/64"	\$1.39
62MST	62mm	3-9/16" Bolt Spacing	4-7/16"	3-5/16"	\$1.99
72MST	72mm	3-15/16" Bolt Spacing	4-15/16"	3-11/16"	\$2.19

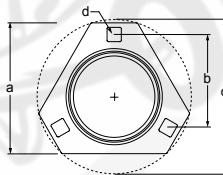
3 Bolt, Triangular Flange



52MS

SKU #	Inner Diameter	Length	Overall Length	List Price
40MS	40mm	2-1/4" Bolt Spacing	2-1/2"	\$1.99
47MS	47mm	2-1/2" Bolt Spacing	2-13/16"	\$1.79
52MS	52mm	2-5/8" Bolt Spacing	3"	\$1.99
62MS	62mm	3-1/8" Bolt Spacing	3-9/16"	\$1.95
62MSR	62mm	3-1/8" Bolt Spacing	3-9/16"	\$2.99
72MS	72mm	3-3/8" Bolt Spacing	3-15/16"	\$2.49

3 Bolt, Round Flange



52MM3GPZP



52MM3GZP

SKU #	Inner Diameter	Outer Diameter	Length	Features	List Price
47MM3GPZP	47mm	2-5/8"	3-9/16" Bolt Spacing	Grease Ring	\$5.80
47MM3GZP	47mm	2-5/8"	3-9/16" Bolt Spacing	Grease Zerk	\$6.05
52MM3GPZP	52mm	3-3/4"	3-3/4" Bolt Spacing	Grease Ring	\$2.78
52MM3GZP	52mm	3-3/4"	3-3/4" Bolt Spacing	Grease Zerk	\$3.99
62MM3GPZP	62mm	4-7/16"	3-1/8" Bolt Spacing	Grease Ring	\$3.99
62MM3GZP	62mm	4-7/16"	3-1/8" Bolt Spacing	Grease Zerk	\$5.99
72MM3GPZP	72mm	4-13/16"	3-3/8" Bolt Spacing	Grease Ring	\$3.79
72MM3GZP	72mm	4-13/16"	3-3/8" Bolt Spacing	Grease Zerk	\$4.29
100MS	100mm	6-9/16"	3-7/8" Bolt Spacing		\$8.99

Bearings & Bushings

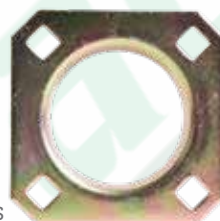
Pressed Steel Bearing Flanges



90MS

4 Bolt, Round Flange

SKU #	Inner Diameter	Outer Diameter	Length	Features	List Price
72MS4	72mm	4-7/8"	2-3/4" Bolt Spacing		\$3.99
90MS	90mm	6-9/16"	3-7/8" Bolt Spacing		\$10.49
90MSR	90mm	6-9/16"	3-7/8" Bolt Spacing	Grease Ring	\$10.49
90MSZ	90mm	6-9/16"	3-7/8" Bolt Spacing	Grease Zerk	\$11.29
100MSR	100mm	6-9/16"	3-7/8" Bolt Spacing	Grease Ring	\$11.70
100MSZ	100mm	6-9/16"	3-7/8" Bolt Spacing	Grease Zerk	\$11.49



80MS



80MSZ

4 Bolt, Square Flange

SKU #	Inner Diameter	Length	Overall Length	Features	List Price
80MS	80mm	3-5/16" Bolt Spacing	4-3/4"		\$3.59
80MSR	80mm	3-5/16" Bolt Spacing	4-3/4"	Grease Ring	\$6.10
80MSZ	80mm	3-5/16" Bolt Spacing	4-3/4"	Grease Zerk	\$7.49
85MS	85mm	3-3/8" Bolt Spacing	4-3/4"		\$4.49
85MSR	85mm	3-3/8" Bolt Spacing	4-3/4"	Grease Ring	\$7.49
85MSZ	85mm	3-3/8" Bolt Spacing	4-3/4"	Grease Zerk	\$7.69

Pillow Block Flange



PP205STKML

SKU #	Inner Diameter	Length	Overall Length	List Price
PP203STKML	40mm	2-11/16" Bolt Spacing	3-5/8"	\$4.49
PP204STKML	47mm	3" Bolt Spacing	4-1/8"	\$4.79
PP205STKML	52mm	3-3/8" Bolt Spacing	4-1/2"	\$5.99
PP206STKML	62mm	3-3/4" Bolt Spacing	4-7/8"	\$6.99

Standard Bore Radial Bearings



16352RSKML

1600 Series

SKU #	Inner Diameter	Outer Diameter	Width	Style	Features	List Price
16022RSKML	1/4"	11/16"	5/16"	Sealed		\$1.99
1607ZZKML	7/16"	29/32"	5/16"	Shielded		\$2.19
16142RSKML	3/8"	1-1/8"	3/8"	Sealed		\$2.29
16152RSKML	7/16"	1-1/8"	3/8"	Sealed		\$2.49
16162RSKML	1/2"	1-1/8"	3/8"	Sealed		\$2.29
16202RSKML	7/16"	1-3/8"	7/16"	Sealed		\$3.19
16212RSKML	1/2"	1-3/8"	7/16"	Sealed		\$3.49
16232RSKML	5/8"	1-3/8"	7/16"	Sealed		\$3.59
16282RSKML	5/8"	1-5/8"	1/2"	Sealed		\$3.99
16332RSKML	5/8"	1-3/4"	1/2"	Sealed		\$4.79
16302RSKML	3/4"	1-5/8"	1/2"	Sealed		\$4.19
16352RSKML	3/4"	1-3/4"	1/2"	Sealed		\$4.79
16352RSNR	3/4"	1-3/4"	1/2"	Sealed	Snap Ring	\$11.99
16382RSKML	3/4"	2"	9/16"	Sealed		\$5.49
16402RSKML	7/8"	2"	9/16"	Sealed		\$5.99
16412RSKML	1"	2"	9/16"	Sealed		\$6.29
16522RSKML	1-1/8"	2-1/2"	5/8"	Sealed		\$6.49
16542RSKML	1-1/4"	2-1/2"	5/8"	Sealed		\$9.29
16582RSKML	1-5/16"	2-9/16"	11/16"	Sealed		\$10.49



R162RSKML

R Series

SKU #	Inner Diameter	Outer Diameter	Width	Style	List Price
R22RSKML	1/8"	3/8"	5/32"	Sealed	\$2.29
R42RSKML	1/4"	5/8"	0.1961"	Sealed	\$1.99
R4AZZKML	1/4"	3/4"	9/32"	Shielded	\$2.19
R6XX	3/8"	7/8"	7/32"	Open Bearing	\$4.19
R62RSKML	3/8"	7/8"	9/32"	Sealed	\$1.99
R6ZZKML	3/8"	7/8"	9/32"	Shielded	\$2.19
R8XX	1/2"	1-1/8"	1/4"	Open Bearing	\$5.49
R82RSKML	1/2"	1-1/8"	5/16"	Sealed	\$2.59
R10	5/8"	1-3/8"	9/32"	Open Bearing	\$5.99
R102RSKML	5/8"	1-3/8"	11/32"	Sealed	\$2.99
R10ZZKML	5/8"	1-3/8"	11/32"	Shielded	\$2.99

continued on next page...

Bearings & Bushings

Standard Bore Radial Bearings

...continued from previous page

SKU #	Inner Diameter	Outer Diameter	Width	Style	List Price
R12	3/4"	1-5/8"	5/16"	Open Bearing	\$6.29
R122RSKML	3/4"	1-5/8"	7/16"	Sealed	\$3.99
R12ZZKML	3/4"	1-5/8"	7/16"	Shielded	\$3.99
R14	7/8"	1-7/8"	3/8"	Open Bearing	\$6.59
R142RSKML	7/8"	1-7/8"	1/2"	Sealed	\$4.19
R16	1"	2"	3/8"	Open Bearing	\$10.99
R162RSKML	1"	2"	1/2"	Sealed	\$4.99
R182RSKML	1-1/8"	2-1/8"	1/2"	Sealed	\$7.49
R202RSKML	1-1/4"	2-1/4"	1/2"	Sealed	\$9.49
R222RSKML	1-3/8"	2-1/2"	9/16"	Sealed	\$11.49
R242RSKML	1-1/2"	2-5/8"	9/16"	Sealed	\$12.49

TIMKEN



R10TK

R Series

SKU #	Inner Diameter	Outer Diameter	Width	Style	List Price
R6TK	3/8"	7/8"	7/32"	Open Bearing	\$13.69
R8TK	1/2"	1-1/8"	1/4"	Open Bearing	\$18.99
R10TK	5/8"	1-3/8"	9/32"	Open Bearing	\$20.99
R14TK	7/8"	1-7/8"	3/8"	Open Bearing	\$25.99



499502HKMML



Z9504RSTKML

Specialty Bearing

SKU #	Inner Diameter	Outer Diameter	Width	Style	Features	List Price
62012RS12KML	1/2"	32 mm	10 mm	Sealed		\$2.49
62022RS58KML	5/8"	35 mm	11 mm	Sealed		\$2.59
62032RS12	1/2"	40 mm	12 mm	Sealed		\$3.99
62032RS58KML	5/8"	40 mm	12 mm	Sealed		\$2.99
62032RS34KML	3/4"	40 mm	12 mm	Sealed		\$2.99
62042RS34KML	3/4"	47 mm	14 mm	Sealed		\$4.99
62052RS1KML	1"	52 mm	15 mm	Sealed		\$4.99
499502HKMML	5/8"	1-3/8"	7/16"	Sealed	Snap Ring	\$6.49
99502HKMML	5/8"	1-3/8"	7/16"	Sealed		\$4.99
Z9504RSTKML	3/4"	1.7805"	0.61"	Sealed		\$5.49

Bearings & Bushings

Metric Bore Radial Bearings



600 Series

SKU #	Inner Diameter	Outer Diameter	Width	Style	List Price
6072RSKML	7mm	19mm	6mm	Sealed	\$1.79
6082RSKML	8mm	22mm	7mm	Sealed	\$1.49
608ZZKML	8mm	22mm	7mm	Shielded	\$1.49
609ZZKML	9mm	24mm	7mm	Shielded	\$1.99
6252RSKML	5mm	16mm	5mm	Sealed	\$2.19
6262RSKML	6mm	19mm	6mm	Sealed	\$1.99
626ZZKML	7mm	22mm	7mm	Shielded	\$1.99
6272RSKML	7mm	22mm	7mm	Sealed	\$1.99
6282RSKML	8mm	24mm	8mm	Sealed	\$1.99
6292RSKML	9mm	26mm	8mm	Sealed	\$1.99
6882RSKML	8mm	16mm	5mm	Sealed	\$2.79
688ZZKML	8mm	16mm	5mm	Shielded	\$2.59



6000 Series

60052RSKML



SKU #	Inner Diameter	Outer Diameter	Width	Style	List Price
60002RSKML	10mm	26mm	8mm	Sealed	\$1.99
60012RSKML	12mm	28mm	8mm	Sealed	\$1.99
60022RSKML	15mm	32mm	9mm	Sealed	\$1.99
60032RSKML	17mm	35mm	10mm	Sealed	\$2.29
60042RSKML	20mm	42mm	12mm	Sealed	\$2.79
60052RSKML	25mm	47mm	12mm	Sealed	\$3.19
60062RSKML	30mm	55mm	13mm	Sealed	\$4.99
60072RSKML	35mm	62mm	14mm	Sealed	\$5.29
60082RSKML	40mm	68mm	15mm	Sealed	\$6.79
60092RSKML	45mm	75mm	16mm	Sealed	\$8.29
60102RSKML	50mm	80mm	16mm	Sealed	\$10.49
60112RSKML	55mm	90mm	18mm	Sealed	\$12.49
60122RSKML	60mm	95mm	18mm	Sealed	\$13.49
60142RSKML	70mm	110mm	20mm	Sealed	\$24.99

Bearings & Bushings

Metric Bore Radial Bearings



6000 Series

SKU #	Inner Diameter	Outer Diameter	Width	Style	List Price
60002RSSKF	10mm	26mm	8mm	Sealed	\$15.99
60012RSSKF	12mm	28mm	8mm	Sealed	\$15.99
60022RSSKF	15mm	32mm	9mm	Sealed	\$16.49
60032RSSKF	17mm	35mm	10mm	Sealed	\$15.49
60042RSSKF	20mm	42mm	12mm	Sealed	\$21.00
60052RSSKF	25mm	47mm	12mm	Sealed	\$20.10
60062RSSKF	30mm	55mm	13mm	Sealed	\$29.99
60072RSSKF	35mm	62mm	14mm	Sealed	\$39.99



6200 Series

62052RSNRKML

62052RSKML



SKU #	Inner Diameter	Outer Diameter	Width	Style	Features	List Price
6200ZZKML	10mm	30mm	9mm	Shielded		\$1.99
6201ZZKML	12mm	32mm	10mm	Shielded		\$1.99
6202ZZKML	15mm	35mm	11mm	Shielded		\$1.99
6203ZZKML	17mm	40mm	12mm	Shielded		\$2.29
6204ZZKML	20mm	47mm	14mm	Shielded		\$2.99
6205ZZKML	25mm	52mm	15mm	Shielded		\$3.59
6206ZZKML	30mm	62mm	16mm	Shielded		\$5.29
62002RSKML	10mm	30mm	9mm	Sealed		\$1.79
62012RSKML	12mm	32mm	10mm	Sealed		\$1.99
62022RSKML	15mm	35mm	11mm	Sealed		\$1.99
62032RSKML	17mm	40mm	12mm	Sealed		\$2.29
62042RSKML	20mm	47mm	14mm	Sealed		\$2.79
62052RSKML	25mm	52mm	15mm	Sealed		\$3.59
62052RSNRKML	25mm	52mm	15mm	Sealed	Snap Ring	\$8.49
62062RSKML	30mm	62mm	16mm	Sealed		\$4.99
62072RSKML	35mm	72mm	17mm	Sealed		\$6.49
62082RSKML	40mm	80mm	18mm	Sealed		\$8.29
62092RSKML	45mm	85mm	19mm	Sealed		\$9.79
62102RSKML	50mm	90mm	20mm	Sealed		\$11.49
62112RSKML	55mm	100mm	21mm	Sealed		\$14.49
62022RS12KML	12 mm	35 mm	11 mm	Sealed		\$2.49
62132RSKML	65mm	120mm	23mm	Sealed		\$24.99
62022RS16KML	16mm	35mm	11mm	Sealed		\$2.49

Bearings & Bushings

Metric Bore Radial Bearings



62052RSSKF

6200 Series

SKU #	Inner Diameter	Outer Diameter	Width	Style	List Price
62002RSSKF	10mm	30mm	9mm	Sealed	\$11.99
62012RSSKF	12mm	32mm	10mm	Sealed	\$11.49
62022RSSKF	15mm	35mm	11mm	Sealed	\$10.99
62032RSSKF	17mm	40mm	12mm	Sealed	\$8.29
62042RSSKF	20mm	47mm	14mm	Sealed	\$14.99
62052RSSKF	25mm	52mm	15mm	Sealed	\$14.99
62062RSSKF	30mm	62mm	16mm	Sealed	\$18.49
62072RSSKF	35mm	72mm	17mm	Sealed	\$27.99
62082RSSKF	40mm	80mm	18mm	Sealed	\$37.99
62092RSSKF	45mm	85mm	19mm	Sealed	\$42.99
62102RSSKF	50mm	90mm	20mm	Sealed	\$47.99
62112RSSKF	55mm	100mm	21mm	Sealed	\$69.99
62122RSSKF	60mm	110mm	22mm	Sealed	\$77.99



63052RSKML

6300 Series

SKU #	Inner Diameter	Outer Diameter	Width	Style	List Price
63002RSKML	10mm	35mm	11mm	Sealed	\$2.79
63012RSKML	12mm	37mm	12mm	Sealed	\$2.99
63022RSKML	15mm	42mm	13mm	Sealed	\$3.19
63032RSKML	17mm	47mm	14mm	Sealed	\$3.79
63042RSKML	20mm	52mm	15mm	Sealed	\$4.79
63052RSKML	25mm	62mm	17mm	Sealed	\$5.99
63062RSKML	30mm	72mm	19mm	Sealed	\$7.79
63072RSKML	35mm	80mm	21mm	Sealed	\$8.99
63082RSKML	40mm	90mm	23mm	Sealed	\$13.99
63092RSKML	45mm	100mm	25mm	Sealed	\$17.49
63112RSKML	55mm	120mm	29mm	Sealed	\$27.99

Bearings & Bushings

Metric Bore Radial Bearings



6300 Series

63052RSSKF



SKU #	Inner Diameter	Outer Diameter	Width	Style	List Price
63012RSSKF	12mm	37mm	12mm	Sealed	\$13.99
63022RSSKF	15mm	42mm	13mm	Sealed	\$14.99
63032RSSKF	17mm	47mm	14mm	Sealed	\$22.00
63042RSSKF	20mm	52mm	15mm	Sealed	\$16.99
63052RSSKF	25mm	62mm	17mm	Sealed	\$22.99
63062RSSKF	30mm	72mm	19mm	Sealed	\$26.90
63072RSSKF	35mm	80mm	21mm	Sealed	\$37.99
63082RSSKF	40mm	90mm	23mm	Sealed	\$45.20
63092RSSKF	45mm	100mm	25mm	Sealed	\$52.99
63102RSSKF	50mm	110mm	27mm	Sealed	\$74.99
63112RSSKF	55mm	120mm	29mm	Sealed	\$87.99



5200 Series

52052RSKML



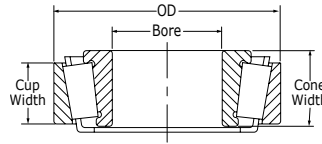
5209ZZKML



SKU #	Inner Diameter	Outer Diameter	Width	Style	Features	List Price
52002RSKML	10mm	30mm	14.3mm	Sealed	Double Row	\$11.49
52012RSKML	12mm	32mm	15.9mm	Sealed	Double Row	\$12.49
52022RSKML	15mm	35mm	15.9mm	Sealed	Double Row	\$13.49
52032RSKML	17mm	40mm	17.5mm	Sealed	Double Row	\$13.49
52042RSKML	20mm	47mm	20.6mm	Sealed	Double Row	\$13.99
52052RSKML	25mm	52mm	20.6mm	Sealed	Double Row	\$13.99
52062RSKML	30mm	62mm	23.8mm	Sealed	Double Row	\$19.99
52072RSKML	35mm	72mm	27mm	Sealed	Double Row	\$22.99
5209ZZKML	45mm	85mm	30.2mm	Shielded	Double Row	\$29.99

Tapered Roller Bearings & Races

TIMKEN



LM67048TK

Tapered Bearing Cone

SKU #	Inner Diameter	Width	Fits	List Price
07097TK	.984"	.561"	07204TK	\$23.99
09067TK	.750"	.750"	09195TK	\$30.99
09074TK	.750"	.848"	09195TK	\$25.99
09081TK	.812"	.848"	09195TK	\$35.99
13685TK	1.50"	.750"	13620TK / 13621TK	\$17.99
13686TK	1.50"	1.03"	13620TK / 13621TK	\$21.99
14120TK	1.19"	.906"	14274TK / 14276TK	\$38.49
14125ATK	1.25"	.771"	14274TK / 14276TK	\$22.49
14130TK	1.313"	.771"	14274TK / 14276TK	\$22.99
14136ATK	1.375"	1.052"	14274TK / 14276TK	\$29.79
14137ATK	1.375"	.771"	14274TK / 14276TK	\$21.99
14138ATK	1.375"	.771"	14274TK / 14276TK	\$23.79
15100TK	1"	.813"	15245TK / 15250TK / 15250XTK	\$24.99
15101TK	1"	.813"	15245TK / 15250TK / 15250XTK	\$19.49
15116TK	1.19"	.813"	15245TK / 15250TK / 15250XTK	\$24.99
15119TK	1.19"	.813"	15245TK / 15250TK / 15250XTK	\$22.49
15120TK	1.19"	.813"	15245TK / 15250TK / 15250XTK	\$23.99
15123TK	1.25"	.750"	15245TK / 15250TK / 15250XTK	\$14.49
15126TK	1.25"	.813"	15245TK / 15250TK / 15250XTK	\$14.99
25580TK	1.75"	1.00"	25520TK / 25521TK	\$16.99
25581TK	1.75"	1.00"	25520TK / 25521TK	\$34.99
25590TK	1.796"	1.00"	25520TK / 25521TK	\$16.99
25877TK	1.375"	.969"	25821TK	\$16.99
342ATK	1.625"	1.180"	332TK	\$38.49
342TK	1.625"	.882"	332TK	\$47.99
3780TK	2"	1.193"	3720TK	\$36.49
387ATK	2.250"	.864"	382TK / 382ATK	\$23.49
387TK	2.250"	.864"	382TK / 382ATK	\$23.49
390TK	2.250"	.866"	394ATK	\$57.99
JL69349TK	1.496"	.669"	JL69310TK	\$9.49
JLM104948TK	1.969"	.847"	JLM104910TK	\$22.99
JLM506849TK	2.165"	.906"	JLM506810TK	\$32.49
L44600LTK	1"	.580"	L44610TK	\$29.99
L44643TK	1"	.580"	L44610TK	\$8.99
L44649TK	1.063"	.580"	L44610TK	\$8.99
L68149TK	1.378"	.660"	L68110TK / L68111TK	\$9.79
LM102949TK	1.781"	.780"	LM102910TK	\$12.99
LM104949TK	2"	.875"	LM104912TK	\$14.49
LM11949TK	.750"	.655"	LM11910TK	\$6.79
LM12749TK	.866"	.655"	LM12710TK	\$11.99
LM29748TK	1.50"	.720"	LM29710TK	\$25.99
LM29749TK	1.50"	.720"	LM12710TK	\$16.99

continued on next page...

For current prices and product availability, visit: <https://paulhardware.com/catalog-tool> 939

Bearings & Bushings

Tapered Roller Bearings & Races

...continued from previous page

SKU #	Inner Diameter	Width	Fits	List Price
LM48548TK	1.375"	.720"	LM48510TK	\$9.99
LM501349TK	1.625"	.780"	LM501310TK	\$11.99
LM603049TK	1.781"	.781"	LM603011TK	\$13.49
LM67048TK	1.25"	.660"	LM67010TK	\$8.49
LM67049ATK	1.25"	.660"	LM67010TK	\$19.49
M12649TK	.844"	.720"	M12610TK	\$9.29

TIMKEN



L44610TK

Tapered Bearing Cup

SKU #	Outer Diameter	Width	List Price	SKU #	Outer Diameter	Width	List Price
07204TK	2.047"	.500"	\$12.79	JL69310TK	2.480"	.532"	\$4.99
09195TK	1.938"	.688"	\$10.99	JLM104910TK	3.228"	.669"	\$9.99
13620TK	2.717"	.594"	\$11.99	JLM506810TK	3.543"	.728"	\$15.99
13621TK	2.717"	.594"	\$16.59	L44610TK	1.980"	.420"	\$4.29
14274TK	2.717"	.625"	\$7.99	L68110TK	2.328"	.470"	\$6.79
14276TK	2.717"	.625"	\$8.59	L68111TK	2.361"	.470"	\$6.59
15245TK	2.441"	.0563"	\$5.29	LM102910TK	2.891"	.620"	\$6.29
15250TK	2.500"	.625"	\$10.99	LM104912TK	3.265"	.650"	\$14.99
15250XTK	2.500"	.625"	\$11.79	LM11710TK	1.570"	.420"	\$5.99
25520TK	3.265"	.750"	\$8.99	LM11910TK	1.781"	.475"	\$3.99
25521TK	3.270"	.750"	\$13.79	LM12710TK	1.781"	.475"	\$4.71
25821TK	2.875"	.750"	\$10.99	LM29710TK	2.563"	.550"	\$8.99
28921TK	3.937"	.781"	\$37.99	LM48510TK	2.563"	.550"	\$4.49
332TK	3.150"	.702"	\$12.49	LM501310TK	2.891"	.580"	\$5.49
3720TK	3.672"	.938"	\$15.49	LM603011TK	3.063"	.594"	\$9.79
382ATK	3.813"	.625"	\$11.49	LM67010TK	2.328"	.465"	\$5.49
382TK	3.875"	.702"	\$21.99	M12610TK	1.969"	.550"	\$4.49
394ATK	4.331"	.741"	\$24.99				

BEARINGS & BUSHINGS

Tapered Roller Bearings & Races



KML006

Tapered Bearing Cone & Cup Set

SKU #	Inner Diameter	Outer Diameter	Width	Includes	List Price
KML001	.688"	1.570"	.545"	LM11749/LM11710	\$7.79
KML002	.750"	1.781"	.610"	LM11949/LM11910	\$7.99
KML004	1.063"	1.980"	.560"	L44649/L44610	\$9.99
KML005	1.357"	2.563"	1.50"	LM48548/LM48510	\$11.49
KML006	1.25"	2.328"	.625"	LM67048/LM67010	\$9.79
KML008	1.142"	1.980"	.560"	L45449/L45410	\$9.79
KML011	1.496"	2.480"	.669"	JL69349/JL69310	\$13.99
KML012	.866"	1.781"	.655"	LM12749/LM12710	\$9.29
KML013	1.378"	2.328"	.625"	L68149/L68110	\$10.49
KML014	1"	1.980"	.560"	L44643/L44610	\$9.29
KML016	.866"	1.810"	.610"	LM12749/LM12711	\$8.99
KML017	1.378"	2.361"	.625"	L68149/L68111	\$10.99
KML036	1.781"	3.063"	.781"	LM603049/LM603012	\$17.99
KML037	1.781"	3.063"	.844"	LM603049/LM603011	\$17.99
KML038	2"	3.250"	.831"	LM104949/LM104911	\$19.99
KML045	1.625"	2.891"	.770"	LM501349/LM501310	\$17.99
KML046	1.26"	2.087"	.571"	JL26749/JL26710	\$15.49
KML047	1.781"	2.891"	.770"	LM102949/LM102910	\$17.49
KML052	1.75"	3.265"	.938"	25580/25520	\$17.49
KML053	1.75"	3.265"	1.063"	25580/25523	\$17.49
KML054	1.796"	3.265"	1.063"	25590/25520	\$17.49
KML056	1.50"	2.563"	.710"	LM29748/LM29710	\$15.49
KML061	.625"	1.688"	.563"	11590/11520	\$13.99
KML063	1.313"	2.688"	.7875"	M88048/M88010	\$19.99
KML069	1.625"	2.891"	.844"	LM501349/LM501314	\$16.99
KML070	1.50"	2.563"	.710"	LM29749/LM29710	\$14.49
KML082	2"	3.228"	.847"	LM104949/JLM104910	\$17.99
KML401	3.25"	5.512"	1.438"	580/572	\$49.99
KML403	3.75"	6"	1.563"	594A/592A	\$67.99
KML406	1.75"	3.672"	1.188"	3782/3720	\$22.99
KML407	2.25"	3.844"	.969"	28682/28622	\$39.99
KML408	2.625"	4.438"	1.188"	39590/39520	\$49.99
KML411	3.25"	5.250"	1.313"	47686/47620	\$59.99
KML413	2.625"	4.813"	1.50"	HM212049/HM212011	\$42.99
KML415	3.50"	6"	1.563"	HM518445/HM518410	\$62.99

Bearings & Bushings

Tapered Roller Bearings & Races



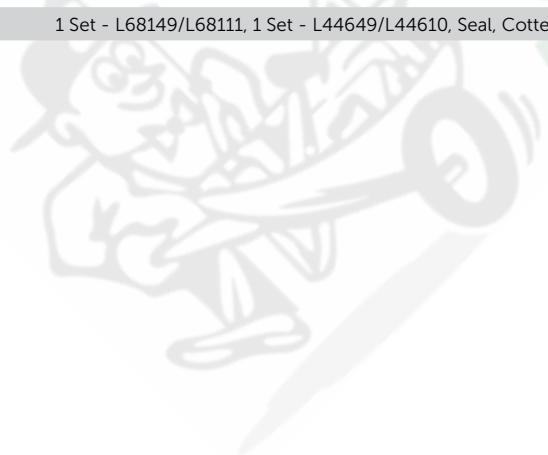
Metric Tapered Bearing Cone & Cup Set

SKU #	Inner Diameter	Outer Diameter	Width	List Price
30204KML	20mm	47mm	15.25mm	\$7.29
30205KML	25mm	52mm	16.25mm	\$7.79
30206KML	30mm	62mm	17.25mm	\$11.49
30207KML	35mm	72mm	18.25mm	\$13.49
30208KML	40mm	80mm	19.75mm	\$14.99
30210KML	50mm	90mm	21.75mm	\$17.99
30212KML	60mm	110mm	22.75mm	\$24.99



Bearing Rebuild Kit For Trailers

SKU #	Includes	Fits	List Price
K1000KML	2 Sets - L44643/L44610, Seal, Cotter Pin, & Grease	1" Axles	\$24.99
K1063KML	2 Sets - L44649/L44610, Seal, Cotter Pin, & Grease	1-1/16" Axles	\$29.99
K3500KML	1 Set - L68149/L68111, 1 Set - L44649/L44610, Seal, Cotter Pin, & Grease	3500 lb Axles	\$34.99



BEARINGS & BUSHINGS

Bearings & Bushings

Flanged Wheel Bearings

- > Flanged Wheel Bearing
- > Pressed Steel Construction
- > For Use In Wagons, Wheelbarrows & Carts



MWPFB58

SKU #	Inner Diameter	Outer Diameter	Features	List Price
MWTBB38	3/8"	1-1/8"	Standard Duty	\$2.19
MWTBB12	1/2"	1-1/8"	Standard Duty	\$3.19
MWIBB12	1/2"	1-3/8"	Standard Duty	\$2.49
MWIBB58	5/8"	1-3/8"	Standard Duty	\$2.49

SKU #	Inner Diameter	Outer Diameter	Features	List Price
MWIBB34	3/4"	1-3/8"	Standard Duty	\$2.49
MWPFB12	1/2"	1-3/8"	Medium Duty	\$3.29
MWPFB58	5/8"	1-3/8"	Medium Duty	\$3.29
MWPFB34	3/4"	1-3/8"	Medium Duty	\$3.79

- > Flanged Wheel Bearing
- > Pressed Steel Construction



SF12X32

SKU #	Inner Diameter	Outer Diameter	List Price
SF12X32	3/4"	2"	\$10.99

SKU #	Inner Diameter	Outer Diameter	List Price
SF16X32	1"	2"	\$10.49

- > Flanged Wheel Bushing
- > Oil-Permeated Steel
- > Great For Wet, Dusty Or Dirty Applications



MWTB58

SKU #	Inner Diameter	Outer Diameter	Features	List Price
MWTB58	5/8"	1-1/8"	Steel	\$2.99
MWIB58	5/8"	1-3/8"	Steel	\$2.79
MWIB34	3/4"	1-3/8"	Steel	\$2.49
MWIB34L	3/4"	1-3/8"	Steel, Long	\$3.49

SKU #	Inner Diameter	Outer Diameter	Features	List Price
MWIB78	7/8"	1-3/8"	Steel	\$3.79
MWRT114	1"	1-3/8"	Steel	\$0.99
MWIB1L	1"	1-3/8"	Steel, Long	\$2.99

Bearings & Bushings

Needle, Cam & Specialty Bearings

Needle Bearing



BH1616

SKU #	Inner Diameter	Outer Diameter	Length	List Price	SKU #	Inner Diameter	Outer Diameter	Length	List Price
B088	1/2"	11/16"	1/2"	\$7.00	BH1616	1"	1-5/16"	1"	\$12.29
B812	1/2"	11/16"	3/4"	\$7.29	BH1624	1"	1-5/16"	1-1/2"	\$15.60
B1012	5/8"	13/16"	3/4"	\$8.49	B1816	1-1/4"	1-3/8"	1"	\$11.99
B1112	11/16"	7/8"	3/4"	\$7.99	B2016	1-1/4"	1-1/2"	1"	\$13.49
B1212	3/4"	1"	3/4"	\$9.29	B2020	1-1/4"	1-1/2"	1-1/4"	\$14.99
B1412	7/8"	1-1/8"	3/4"	\$9.49	BH2212	1-3/8"	1-3/4"	3/4"	\$19.40
B168	1"	1-1/4"	1/2"	\$9.49	HK2020	20mm	26mm	20mm	\$9.49
B1612	1"	1-1/4"	3/4"	\$10.49	HK3516	35mm	42mm	16mm	\$19.99
B1616	1"	1-1/4"	1"	\$10.49	HK5020	50mm	58mm	20mm	\$29.99
BH1612	1"	1-5/16"	3/4"	\$10.99					

Cam Follower Bearing



CR12

SKU #	Outer Diameter	Width	Length	List Price	SKU #	Outer Diameter	Width	Length	List Price
CR12	3/4"	1/2"	7/8" Stud Length	\$17.49	CR18	1-1/8"	5/8"	1" Stud Length	\$21.99
CR14	7/8"	1/2"	7/8" Stud Length	\$17.50	CR22	1-3/8"	3/4"	1-1/4" Stud Length	\$27.99
CR16	1"	5/8"	1" Stud Length	\$17.49	CR24	1-1/2"	7/8"	1-1/2" Stud Length	\$32.99
CRSB16	1"	5/8"	1" Stud Length	\$39.99					

Rod End Bearings

- > Rod End Bearing
- > High Carbon, Hardened Chrome Plated Ball
- > Used For General Purpose Linkage

Female Thread



CF8

SKU #	Inner Diameter	Thread	Width	Length	Thickness	List Price
CF3	3/16"	10/32	5/8"	1-1/16"	5/16"	\$4.99
CF4	1/4"	1/4"-28	3/4"	1-5/16"	3/8"	\$4.99
CF5	5/16"	5/16"-24	7/8"	2-1/2"	7/16"	\$4.79
CF6	3/8"	3/8"-24	1"	1-5/8"	1/2"	\$5.79
CF7	7/16"	7/16"-20	1-1/8"	1-13/16"	9/16"	\$7.58
CF8	1/2"	1/2"-20	1-5/16"	2-1/8"	5/8"	\$9.49
CF10	5/8"	5/8"-18	1-1/2"	2-1/2"	3/4"	\$14.49
CF120	3/4"	3/4"-16	1-3/4"	2-7/8"	7/8"	\$18.49

Female Thread - Left Hand

SKU #	Inner Diameter	Thread	Width	Length	Thickness	List Price
CFL3	3/16"	10/32	5/8"	1-1/16"	5/16"	\$4.75
CFL4	1/4"	1/4"-28	3/4"	1-5/16"	3/8"	\$5.29
CFL5	5/16"	5/16"-24	7/8"	1-3/8"	7/16"	\$4.99
CFL6	3/8"	3/8"-24	1"	1-5/8"	1/2"	\$5.44
CFL8	1/2"	1/2"-20	1-5/16"	2-1/8"	5/8"	\$9.69



Female Thread - Male Stud

SKU #	Inner Diameter	Thread	Width	Length	Thickness	List Price
CF3Y	3/16"	10/32	5/8"	1-1/16"		\$5.85
CF4Y	1/4"	1/4"-28	3/4"	1-5/16"		\$5.99
CF5Y	5/16"	5/16"-24	7/8"	1-3/8"		\$6.29
CF6Y	3/8"	3/8"-24	1"	1-5/8"		\$6.99
CF7Y	7/16"	7/16"-20	1-1/8"	1-13/16"		\$9.13
CF8Y	1/2"	1/2"-20	1-5/16"	2-1/8"		\$10.85



Male Thread

SKU #	Inner Diameter	Thread	Width	Length	Thickness	List Price
CM3	3/16"	10/32	5/8"	1-1/16"	5/16"	\$5.29
CM4	1/4"	1/4"-28	3/4"	1-5/16"	3/8"	\$4.99
CM5	5/16"	5/16"-24	7/8"	1-3/8"	7/16"	\$4.99
CM6	3/8"	3/8"-24	1"	1-5/8"	1/2"	\$5.79
CM7	7/16"	7/16"-20	1-1/8"	1-13/16"	9/16"	\$7.99
CM80	1/2"	1/2"-20	1-5/16"	2-1/8"	5/8"	\$9.49
CM100	5/8"	5/8"-18	1-1/2"	2-1/2"	3/4"	\$14.40
CM120	3/4"	3/4"-16	1-3/4"	2-7/8"	7/8"	\$19.99

Male Thread - Left Hand

SKU #	Inner Diameter	Thread	Width	Length	Thickness	List Price
CML4	1/4"	1/4"-28	3/4"	1-5/16"	3/8"	\$4.75
CML5	5/16"	5/16"-24	7/8"	1-3/8"	7/16"	\$4.75
CML6	3/8"	3/8"-24	1"	1-5/8"	1/2"	\$5.49
CML7	7/16"	7/16"-20	1-1/8"	1-13/16"	9/16"	\$7.58
CML8	1/2"	1/2"-20	1-5/16"	2-1/8"	5/8"	\$9.10
CML10	5/8"	5/8"-18	1-1/2"	2-1/2"	3/4"	\$14.40

Bearings & Bushings

Chrome Steel Balls

- › Chrome Steel Ball Bearing
- › Through-Hardened, High Load Capacity
- › Used In Precision Ball Bearings



SKU #	Size	List Price	SKU #	Size	List Price	SKU #	Size	List Price
BB18	1/8"	\$0.19	BB1132	11/32"	\$0.78	BB34	3/4"	\$2.99
BB532	5/32"	\$0.16	BB38	3/8"	\$0.68	BB1	1"	\$5.99
BB316	3/16"	\$0.07	BB716	7/16"	\$0.79	BALL118	1-1/8"	\$8.49
BB732	7/32"	\$0.12	BB12	1/2"	\$0.70	BALL114	1-1/4"	\$5.62
BB14	1/4"	\$0.13	BB916	9/16"	\$0.99	BB78	7/8"	\$3.79
BB516	5/16"	\$0.39	BB58	5/8"	\$0.89			

Ball Joints



SKU #	Inner Diameter	Outer Diameter	Width	List Price	SKU #	Inner Diameter	Outer Diameter	Width	List Price
5982	1/2"	2"	1"	\$5.50	5827	7/8"	2-1/2"	1-3/8"	\$13.99
5870	5/8"	2"	1"	\$5.79	7466	1"	2"	1"	\$7.10
5868	3/4"	2"	1"	\$5.79	5526	1"	2-3/4"	1-3/4"	\$14.99
5500	3/4"	2"	1-3/4"	\$8.08	5836	1-1/8"	3-1/8"	1-3/4"	\$17.99
5347	3/4"	2-1/4"	1-3/8"	\$9.49					

Bronze Bushings

- › Bronze Bushing
- › Oil Permeated, Self-Lubricating
- › Primarily Used As Low Speed Bearing



SKU #	Inner Diameter	Outer Diameter	Length	List Price	SKU #	Inner Diameter	Outer Diameter	Length	List Price
B244	1/8"	1/4"	1/2"	\$0.59	B468	1/4"	3/8"	1"	\$0.79
B346	3/16"	1/4"	3/4"	\$0.49	B478	1/4"	7/16"	1"	\$1.19
B356	3/16"	5/16"	3/4"	\$0.99	B486	1/4"	1/2"	3/4"	\$1.19
B456	1/4"	5/16"	3/4"	\$0.59	B488	1/4"	1/2"	1"	\$1.49

continued on next page...

Bearings & Bushings

Bronze Bushings

...continued from previous page

SKU #	Inner Diameter	Outer Diameter	Length	List Price	SKU #	Inner Diameter	Outer Diameter	Length	List Price
B4810	1/4"	1/2"	1-1/4"	\$1.49	B121616	3/4"	1"	2"	\$4.49
B0568	5/16"	3/8"	1"	\$0.79	B121620	3/4"	1"	2-1/2"	\$5.49
B0578	5/16"	7/16"	1"	\$0.79	B121812	3/4"	1-1/8"	1-1/2"	\$5.49
B588	5/16"	1/2"	1"	\$0.99	B121816	3/4"	1-1/8"	2"	\$7.29
B684	3/8"	1/2"	1/2"	\$0.55	B131616	13/16"	1"	2"	\$8.79
B6810	3/8"	1/2"	1-1/4"	\$0.99	B14167	7/8"	1"	7/8"	\$1.19
B6910	3/8"	9/16"	1-1/4"	\$2.59	B14168	7/8"	1"	1"	\$1.29
B61010	3/8"	5/8"	1-1/4"	\$2.75	B141612	7/8"	1"	1-1/2"	\$2.19
B7910	7/16"	9/16"	1-1/4"	\$1.49	B141716	7/8"	1-1/16"	2"	\$8.29
B71010	7/16"	5/8"	1-1/4"	\$2.59	B141816	7/8"	1-1/8"	2"	\$5.79
B71112	7/16"	11/16"	1-1/2"	\$6.29	B141820	7/8"	1-1/8"	2-1/2"	\$6.79
B8106	1/2"	5/8"	3/4"	\$0.79	B14206	7/8"	1-1/4"	3/4"	\$3.19
B8108	1/2"	5/8"	1"	\$0.99	B142016	7/8"	1-1/4"	2"	\$10.49
B81012	1/2"	5/8"	1-1/2"	\$2.19	B151916	15/16"	1-3/16"	2"	\$6.79
B81112	1/2"	11/16"	1-1/2"	\$3.59	B152016	15/16"	1-1/4"	2"	\$7.49
B8129	1/2"	3/4"	1-1/8"	\$1.99	B16186	1"	1-1/8"	3/4"	\$1.29
B81212	1/2"	3/4"	1-1/2"	\$2.49	B16188	1"	1-1/8"	1"	\$1.59
B81216	1/2"	3/4"	2"	\$4.99	B161816	1"	1-1/8"	2"	\$5.79
B81312	1/2"	13/16"	1-1/2"	\$5.79	B16198	1"	1-3/16"	1"	\$2.79
B81412	1/2"	7/8"	1-1/2"	\$4.49	B161916	1"	1-3/16"	2"	\$4.59
B81612	1/2"	1"	1-1/2"	\$6.49	B16206	1"	1-1/4"	3/4"	\$2.29
B9124	9/16"	3/4"	1/2"	\$1.49	B16208	1"	1-1/4"	1"	\$2.99
B91212	9/16"	3/4"	1-1/2"	\$5.49	B162010	1"	1-1/4"	1-1/4"	\$3.59
B91312	9/16"	13/16"	1-1/2"	\$5.29	B162012	1"	1-1/4"	1-1/2"	\$4.49
B10128	5/8"	3/4"	1"	\$1.09	B162016	1"	1-1/4"	2"	\$5.79
B101210	5/8"	3/4"	1-1/4"	\$1.49	B162018	1"	1-1/4"	2-1/4"	\$6.49
B101212	5/8"	3/4"	1-1/2"	\$1.49	B162020	1"	1-1/4"	2-1/2"	\$6.99
B10124	5/8"	3/4"	1/2"	\$0.79	B162024	1"	1-1/4"	3"	\$8.79
B10136	5/8"	13/16"	3/4"	\$1.49	B162212	1"	1-3/8"	1-1/2"	\$6.99
B101312	5/8"	13/16"	1-1/2"	\$2.49	B162220	1"	1-3/8"	2-1/2"	\$11.49
B10146	5/8"	7/8"	3/4"	\$1.59	B162424	1"	1-1/2"	3"	\$19.49
B101416	5/8"	7/8"	2"	\$4.25	B172120	1-1/16"	1-5/16"	2-1/2"	\$19.99
B10168	5/8"	1"	1"	\$3.19	B182010	1-1/8"	1-1/4"	1-1/4"	\$2.59
B101612	5/8"	1"	1-1/2"	\$4.99	B18208	1-1/8"	1-1/4"	1"	\$2.29
B101616	5/8"	1"	2"	\$7.29	B182012	1-1/8"	1-1/4"	1-1/2"	\$2.79
B111416	11/16"	7/8"	2"	\$7.49	B182112	1-1/8"	1-5/16"	1-1/2"	\$6.49
B12146	3/4"	7/8"	3/4"	\$0.99	B182216	1-1/8"	1-3/8"	2"	\$6.49
B12148	3/4"	7/8"	1"	\$1.19	B182224	1-1/8"	1-3/8"	3"	\$9.79
B121410	3/4"	7/8"	1-1/4"	\$1.59	B182412	1-1/8"	1-1/2"	1-1/2"	\$8.49
B121412	3/4"	7/8"	1-1/2"	\$2.49	B182416	1-1/8"	1-1/2"	2"	\$11.49
B121516	3/4"	15/16"	2"	\$4.99	B192324	1-3/16"	1-7/16"	3"	\$24.53
B12164	3/4"	1"	1/2"	\$1.29	B192424	1-3/16"	1-1/2"	3"	\$12.99
B12166	3/4"	1"	3/4"	\$1.79	B20246	1-1/4"	1-1/2"	3/4"	\$2.54
B12168	3/4"	1"	1"	\$2.29	B20248	1-1/4"	1-1/2"	1"	\$3.59
B121610	3/4"	1"	1-1/4"	\$2.79	B202412	1-1/4"	1-1/2"	1-1/2"	\$5.29
B121612	3/4"	1"	1-1/2"	\$3.49	B202416	1-1/4"	1-1/2"	2"	\$6.99

continued on next page...

For current prices and product availability, visit: <https://paulhardware.com/catalog-tool> 947

Bearings & Bushings

Bronze Bushings

...continued from previous page

SKU #	Inner Diameter	Outer Diameter	Length	List Price	SKU #	Inner Diameter	Outer Diameter	Length	List Price
B202424	1-1/4"	1-1/2"	3"	\$10.99	B263024	1-5/8"	1-7/8"	3"	\$14.49
B202612	1-1/4"	1-5/8"	1-1/2"	\$8.49	B263216	1-5/8"	2"	2"	\$13.99
B202614	1-1/4"	1-5/8"	1-3/4"	\$9.79	B283212	1-3/4"	2"	1-1/2"	\$7.99
B202616	1-1/4"	1-5/8"	2"	\$11.49	B283216	1-3/4"	2"	2"	\$9.79
B202824	1-1/4"	1-3/4"	3"	\$24.99	B283220	1-3/4"	2"	2-1/2"	\$12.49
B222616	1-3/8"	1-5/8"	2"	\$7.79	B283224	1-3/4"	2"	3"	\$14.49
B22268	1-3/8"	1-5/8"	1"	\$4.79	B283416	1-3/4"	2-1/8"	2"	\$14.99
B222816	1-3/8"	1-3/4"	2"	\$11.99	B313420	1-15/16"	2-1/8"	2-1/2"	\$16.49
B222824	1-3/8"	1-3/4"	3"	\$18.49	B323616	2"	2-1/4"	2"	\$11.99
B232816	1-7/16"	1-3/4"	2"	\$10.49	B323624	2"	2-1/4"	3"	\$17.99
B24288	1-1/2"	1-3/4"	1"	\$4.19	B323824	2"	2-3/8"	3"	\$24.99
B242812	1-1/2"	1-3/4"	1-1/2"	\$6.29	B323828	2"	2-3/8"	3-1/2"	\$29.99
B242816	1-1/2"	1-3/4"	2"	\$8.49	B324024	2"	2-1/2"	3"	\$34.99
B242824	1-1/2"	1-3/4"	3"	\$12.99	B404420	2-1/2"	2-3/4"	2-1/2"	\$15.99
B243016	1-1/2"	1-7/8"	2"	\$12.99	B404824	2-1/2"	3"	3"	\$34.99
B243224	1-1/2"	2"	3"	\$27.99	B485620	3"	3-1/2"	2-1/2"	\$43.67

- › Flanged Bronze Bushing
- › Oil Permeated, Self-Lubricating
- › Primarily Used As Low Speed Bearing



FB12168

SKU #	Inner Diameter	Outer Diameter	Length	Width	List Price
FB354	3/16"	5/16"	1/2"	1/16" Flange	\$1.19
FB464	1/4"	3/8"	1/2"	3/64" Flange	\$0.79
FB573	5/16"	7/16"	3/8"	3/32" Flange	\$0.99
FB583	5/16"	1/2"	3/8"	3/32" Flange	\$1.29
FB6104	3/8"	5/8"	1/2"	1/8" Flange	\$1.09
FB684	3/8"	1/2"	1/2"	3/32" Flange	\$0.59
FB8105	1/2"	5/8"	5/8"	1/8" Flange	\$0.99
FB8125	1/2"	3/4"	5/8"	1/8" Flange	\$1.49
FB8126	1/2"	3/4"	3/4"	1/8" Flange	\$1.59
FB10126	5/8"	3/4"	3/4"	1/8" Flange	\$1.19
FB10128	5/8"	3/4"	1"	1/8" Flange	\$1.29
FB10138	5/8"	13/16"	1"	5/32" Flange	\$2.29
FB12146	3/4"	7/8"	3/4"	5/32" Flange	\$2.99
FB12164	3/4"	1"	1/2"	1/8" Flange	\$1.49
FB12166	3/4"	1"	3/4"	5/32" Flange	\$2.49
FB12168	3/4"	1"	1"	1/8" Flange	\$2.79
FB1216820	3/4"	1"	1"	5/32" Flange	\$2.79
FB16206	1"	1-1/4"	3/4"	3/16" Flange	\$2.79
FB16208	1"	1-1/4"	1"	3/16" Flange	\$4.19
FB162012	1"	1-1/4"	1-1/2"	3/16" Flange	\$4.99
FB162016	1"	1-1/4"	2"	3/16" Flange	\$6.49
FB18226	1-1/8"	1-3/8"	3/4"	3/16" Flange	\$3.19
FB324019	2"	2-1/2"	2-3/8"	3/8" Flange	\$32.99