

BEARINGS & BUSHINGS

From the small radial bearings to the heavy-duty Type-E industrial bearings, we have you covered. You will find an expansive selection of bearings, featuring the brands KML, FYH, Royersford, and Timken. Look even further and you will find needle bearings, cam bearings, tapered bearings, flanged bearings, and bronze bushings.

For current prices and product availability, visit: <https://paulbhardware.com/catalog-tool>



Paul B
WHOLESALE



**Your Premium
Bearing Alternative**
available through
Paul B Wholesale



BEARINGS & BUSHINGS

www.kmlbearingusa.com

For current prices and product availability, visit: <https://paulbhardware.com/catalog-tool>

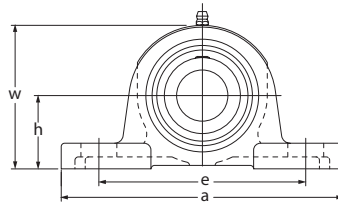
Bearings & Bushings

Set Screw Pillow Block Bearing



Rubber Mounted Pillow Block - Set Screw Lock

- › Pillow Block Bearing
- › Standard Race Insert
- › Pressed Steel Housing
- › Used In HVAC Applications

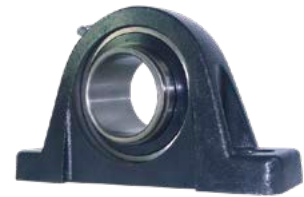


SBRPP20516KML

SKU #	Inner Diameter	Length	Overall Length	Mounting	Height	List Price
SBRPP20210KML	5/8"	2-63/64" Bolt Spacing	4-1/8"	1" Center Line	2-3/32"	
SBRPP20412KML	3/4"	3-25/64" Bolt Spacing	4-19/64"	1-1/8" Center Line	2-7/32"	
SBRPP20516KML	1"	3-3/4" Bolt Spacing	4-7/8"	1-5/16" Center Line	2-5/8"	

Standard Pillow Block - Set Screw Lock

- › Pillow Block Bearing
- › Standard Race Insert
- › Cast Iron Housing



SBPE20516GKML

SKU #	Inner Diameter	Length	Overall Length	Mounting	Height	List Price
SBPE2018GKML	1/2"	3-3/4" Bolt Spacing	4-7/8"	1-3/16" Center Line	2-1/4"	
SBPE20210GKML	5/8"	3-3/4" Bolt Spacing	4-7/8"	1-3/16" Center Line	2-1/4"	
SBPE20412GKML	3/4"	3-3/4" Bolt Spacing	5"	1-5/16" Center Line	2-9/16"	
SBPE20516GKML	1"	4-1/8" Bolt Spacing	5-1/2"	1-7/16" Center Line	2-3/4"	
SBPE20620GKML	1-1/4"	4-49/64" Bolt Spacing	6-1/2"	1-11/16" Center Line	3-9/32"	
SBPE20720GKML	1-1/4"	5" Bolt Spacing	6-9/16"	1-7/8" Center Line	3-11/16"	
SBPE20722GKML	1-3/8"	5" Bolt Spacing	6-9/16"	1-7/8" Center Line	3-11/16"	
SBPE20824GKML	1-1/2"	5-25/64" Bolt Spacing	7-1/4"	1-15/16" Center Line	3-15/16"	

Standard Pillow Block - Set Screw Lock, Extended Race

- › Pillow Block Bearing
- › Extended Race Insert
- › Cast Iron Housing



UCPE20516KML

SKU #	Inner Diameter	Length	Overall Length	Mounting	Height	List Price
UCPE2018KML	1/2"	3-3/4" Bolt Spacing	5"	1-5/16" Center Line	2-9/16"	
UCPE20210KML	5/8"	3-3/4" Bolt Spacing	5"	1-5/16" Center Line	2-9/16"	
UCPE20412KML	3/4"	3-3/4" Bolt Spacing	5"	1-5/16" Center Line	2-9/16"	
UCPE20516KML	1"	4-1/8" Bolt Spacing	5-1/2"	1-7/16" Center Line	2-3/4"	
UCPE20618KML	1-1/8"	4-49/64" Bolt Spacing	6-1/2"	1-11/16" Center Line	3-9/32"	
UCPE20620KML	1-1/4"	4-49/64" Bolt Spacing	6-1/2"	1-11/16" Center Line	3-9/32"	
UCPE20824KML	1-1/2"	5-25/64" Bolt Spacing	7-1/4"	1-15/16" Center Line	3-15/16"	
UCPE20928KML	1-3/4"	5-3/4" Bolt Spacing	7-15/32"	2-1/8" Center Line	4-1/4"	
UCPE21132KML	2"	6-23/32" Bolt Spacing	8-5/8"	2-1/2" Center Line	4-31/32"	

For current prices and product availability, visit: <https://paulhardware.com/catalog-tool>

Set Screw Pillow Block Bearing

FYH

Premium Pillow Block - Set Screw Lock

- › Premium Pillow Block Bearing
- › Extended Race Insert
- › Cast Iron Housing



UCP20516FYH

SKU #	Inner Diameter	Length	Overall Length	Mounting	Height	List Price
UCP20412FYH	3/4"	3-3/4" Bolt Spacing	5"	1-5/16" Center Line	2-3/8"	
UCP20516FYH	1"	3-3/4" Bolt Spacing	5-1/2"	1-7/16" Center Line	2-3/4"	
UCP20620FYH	1-1/4"	4-1/8" Bolt Spacing	6-1/2"	1-11/16" Center Line	3-5/16"	
UCP20720FYH	1-1/4"	5" Bolt Spacing	6-9/16"	1-7/8" Center Line	3-3/4"	
UCP20722FYH	1-3/8"	5" Bolt Spacing	6-9/16"	1-7/8" Center Line	3-3/4"	
UCP20824FYH	1-1/2"	5-13/32" Bolt Spacing	7-1/4"	1-15/16" Center Line	3-27/32"	

TIMKEN

Premium Pillow Block - Set Screw Lock

- › Premium Pillow Block Bearing
- › Standard Race Insert
- › Cast Iron Housing



YAS112

SKU #	Inner Diameter	Length	Overall Length	Mounting	Height	List Price
YAS34	3/4"	3-3/4" Bolt Spacing	5"	1-5/16" Center Line	2-5/8"	
YAS1	1"	4-1/8" Bolt Spacing	5-1/2"	1-7/16" Center Line	2-7/8"	
YAS114	1-1/4"	5-1/8" Bolt Spacing	6-9/16"	1-7/8" Center Line	3-3/4"	
YAS112	1-1/2"	5-3/8" Bolt Spacing	7-1/16"	1-15/16" Center Line	4"	

SEALMASTER

USA Pillow Block - Set Screw Lock

- › Premium Pillow Block Bearing
- › Standard Race Insert
- › Cast Iron Housing



SMNP16

SKU #	Inner Diameter	Length	Overall Length	Mounting	Height	List Price
SMNP16	1"	4-1/8" Bolt Spacing	5-1/2"	1-7/16" Center Line	2-13/16"	
SMNP20	1-1/4"	5" Bolt Spacing	6-9/16"	1-7/8" Center Line	1-11/16"	
SMNP22	1-3/8"	5" Bolt Spacing	6-9/16"	1-7/8" Center Line	1-11/16"	
SMNP23	1-7/16"	5" Bolt Spacing	6-9/16"	1-7/8" Center Line	1-11/16"	
SMNP24	1-1/2"	5-3/8" Bolt Spacing	7-1/4"	1-15/16" Center Line	3-15/16"	
SMNP27	1-11/16"	5-3/4" Bolt Spacing	7-1/2"	2-1/8" Center Line	4-1/4"	
SMNP28	1-3/4"	5-3/4" Bolt Spacing	7-1/2"	2-1/8" Center Line	4-1/4"	
SMNP31	1-15/16"	6-1/4" Bolt Spacing	8-1/8"	2-1/4" Center Line	4-9/16"	
SMNP32	2"	6-3/4" Bolt Spacing	8-5/8"	2-1/2" Center Line	5"	
SMNP35	2-3/16"	6-3/4" Bolt Spacing	8-5/8"	2-1/2" Center Line	5"	
SMNP39	2-7/16"	7-1/4" Bolt Spacing	9-1/2"	2-3/4" Center Line	5-9/16"	

For current prices and product availability, visit: <https://paulbhardware.com/catalog-tool>

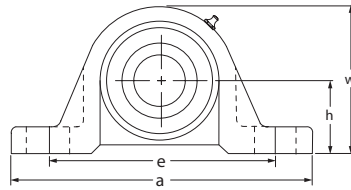
Bearings & Bushings

Lock Collar Pillow Block Bearing



Standard Pillow Block - Locking Collar

- > Pillow Block Bearing
- > Standard Race Insert
- > Cast Iron Housing



SAPE20516KML

SKU #	Inner Diameter	Length	Overall Length	Mounting	Height	List Price
SAPE2018KML	1/2"	3-3/4" Bolt Spacing	4-7/8"	1-3/16" Center Line	2-1/4"	
SAPE20210KML	5/8"	3-3/4" Bolt Spacing	4-7/8"	1-3/16" Center Line	2-1/4"	
SAPE20412KML	3/4"	3-3/4" Bolt Spacing	5"	1-5/16" Center Line	2-9/16"	
SAPE20514KML	7/8"	4-1/8" Bolt Spacing	5-1/2"	1-7/16" Center Line	2-3/4"	
SAPE20515KML	15/16"	4-1/8" Bolt Spacing	5-1/2"	1-7/16" Center Line	2-3/4"	
SAPE20516KML	1"	4-1/8" Bolt Spacing	5-1/2"	1-7/16" Center Line	2-3/4"	
SAPE20617KML	1-1/16"	4-49/64" Bolt Spacing	6-1/2"	1-11/16" Center Line	3-9/32"	
SAPE20618KML	1-1/8"	4-49/64" Bolt Spacing	6-1/2"	1-11/16" Center Line	3-9/32"	
SAPE20619KML	1-3/16"	4-49/64" Bolt Spacing	6-1/2"	1-11/16" Center Line	3-9/32"	
SAPE20620KML	1-1/4"	4-49/64" Bolt Spacing	6-1/2"	1-11/16" Center Line	3-9/32"	
SAPE20720KML	1-1/4"	5" Bolt Spacing	6-9/16"	1-7/8" Center Line	3-11/16"	

Standard Pillow Block - Locking Collar, Extended Race

- > Pillow Block Bearing
- > Extended Race Insert
- > Cast Iron Housing



HCPE20516KML

SKU #	Inner Diameter	Length	Overall Length	Mounting	Height	List Price
HCPE20210KML	5/8"	3-3/4" Bolt Spacing	5"	1-5/16" Center Line	2-9/16"	
HCPE20412KML	3/4"	3-3/4" Bolt Spacing	5"	1-5/16" Center Line	2-9/16"	
HCPE20514KML	7/8"	4-1/8" Bolt Spacing	5-1/2"	1-7/16" Center Line	2-3/4"	
HCPE20516KML	1"	4-1/8" Bolt Spacing	5-1/2"	1-7/16" Center Line	2-3/4"	
HCPE20618KML	1-1/8"	4-49/64" Bolt Spacing	6-1/2"	1-11/16" Center Line	3-9/32"	
HCPE20619KML	1-3/16"	4-49/64" Bolt Spacing	6-1/2"	1-11/16" Center Line	3-9/32"	
HCPE20620KML	1-1/4"	4-49/64" Bolt Spacing	6-1/2"	1-11/16" Center Line	3-9/32"	
HCPE20720KML	1-1/4"	5" Bolt Spacing	6-9/16"	1-7/8" Center Line	3-11/16"	
HCPE20722KML	1-3/8"	5" Bolt Spacing	6-9/16"	1-7/8" Center Line	3-11/16"	
HCPE20723KML	1-7/16"	5" Bolt Spacing	6-9/16"	1-7/8" Center Line	3-11/16"	
HCPE20824KML	1-1/2"	5-25/64" Bolt Spacing	7-1/4"	1-15/16" Center Line	3-15/16"	
HCPE20926KML	1-5/8"	5-3/4" Bolt Spacing	7-15/32"	2-1/8" Center Line	4-1/4"	
HCPE20927KML	1-11/16"	5-3/4" Bolt Spacing	7-15/32"	2-1/8" Center Line	4-1/4"	
HCPE20928KML	1-3/4"	5-3/4" Bolt Spacing	7-15/32"	2-1/8" Center Line	4-1/4"	
HCPE21030KML	1-7/8"	6-1/4" Bolt Spacing	8-1/8"	2-1/4" Center Line	4-1/2"	
HCPE21031KML	1-15/16"	6-1/4" Bolt Spacing	8-1/8"	2-1/4" Center Line	4-1/2"	
HCPE21032KML	2"	6-1/4" Bolt Spacing	8-1/8"	2-1/4" Center Line	4-1/2"	
HCPE21132KML	2"	6-23/32" Bolt Spacing	8-5/8"	2-1/2" Center Line	4-31/32"	

Lock Collar Pillow Block Bearing

FYH[®]

The foremost brand of Japanese mounted units for over 60 years.



FYH BEARING UNITS USA, INC.

FYH

Premium Pillow Block - Locking Collar, Extended Race

- › Premium Pillow Block Bearing
- › Extended Race Insert
- › Cast Iron Housing



NAP20516

SKU #	Inner Diameter	Length	Overall Length	Mounting	Height	List Price
NAP2018	1/2"	3-3/4" Bolt Spacing	5"	1-3/16" Center Line	2-3/8"	
NAP20210	5/8"	3-3/4" Bolt Spacing	5"	1-3/16" Center Line	2-3/8"	
NAP20412	3/4"	3-3/4" Bolt Spacing	5"	1-5/16" Center Line	2-3/8"	
NAP20514	7/8"	3-3/4" Bolt Spacing	5-1/2"	1-7/16" Center Line	2-3/4"	
NAP20515	15/16"	3-3/4" Bolt Spacing	5-1/2"	1-7/16" Center Line	2-3/4"	
NAP20516	1"	3-3/4" Bolt Spacing	5-1/2"	1-7/16" Center Line	2-3/4"	
NAP20618	1-1/8"	4-1/8" Bolt Spacing	6-1/2"	1-11/16" Center Line	3-5/16"	
NAP20619	1-3/16"	4-1/8" Bolt Spacing	6-1/2"	1-11/16" Center Line	3-5/16"	
NAP20620	1-1/4"	4-1/8" Bolt Spacing	6-1/2"	1-11/16" Center Line	3-5/16"	
NAP20720	1-1/4"	5" Bolt Spacing	6-9/16"	1-7/8" Center Line	3-3/4"	
NAP20722	1-3/8"	5" Bolt Spacing	6-9/16"	1-7/8" Center Line	3-3/4"	
NAP20723	1-7/16"	5" Bolt Spacing	6-9/16"	1-7/8" Center Line	3-3/4"	

continued on next page...

For current prices and product availability, visit: <https://paulbhardware.com/catalog-tool>

Bearings & Bushings

Lock Collar Pillow Block Bearing

...continued from previous page

SKU #	Inner Diameter	Length	Overall Length	Mounting	Height	List Price
NAP20824	1-1/2"	5-13/32" Bolt Spacing	7-1/4"	1-15/16" Center Line	3-27/32"	
NAP20825	1-9/16"	5-13/32" Bolt Spacing	7-1/4"	1-15/16" Center Line	3-27/32"	
NAP20926	1-5/8"	5-3/4" Bolt Spacing	7-15/32"	2-1/8" Center Line	4-3/16"	
NAP20927	1-11/16"	5-3/4" Bolt Spacing	7-15/32"	2-1/8" Center Line	4-3/16"	
NAP20928	1-3/4"	5-3/4" Bolt Spacing	7-15/32"	2-1/8" Center Line	4-3/16"	
NAP21030	1-7/8"	6-1/4" Bolt Spacing	8-1/8"	2-1/4" Center Line	4-7/16"	
NAP21031	1-15/16"	6-1/4" Bolt Spacing	8-1/8"	2-1/4" Center Line	4-7/16"	
NAP21132	2"	6-23/32" Bolt Spacing	8-5/8"	2-1/2" Center Line	4-29/32"	
NAP21135	2-3/16"	6-23/32" Bolt Spacing	8-5/8"	2-1/2" Center Line	4-29/32"	
NAP21236	2-1/4"	7-1/4" Bolt Spacing	9-1/2"	2-3/4" Center Line	5-7/16"	
NAP21239	2-7/16"	7-1/4" Bolt Spacing	9-1/2"	2-3/4" Center Line	5-7/16"	
NAP21547	2-15/16"	8-17/32" Bolt Spacing	10-13/16"	3-1/4" Center Line	6-3/8"	

TIMKEN

Premium Pillow Block - Locking Collar, Extended Race

RAS1



SKU #	Inner Diameter	Length	Overall Length	Mounting	Height	List Price
RAS34	3/4"	3-3/4" Bolt Spacing	5"	1-5/16" Center Line	2-5/8"	
RAS1	1"	4-1/8" Bolt Spacing	5-1/2"	1-7/16" Center Line	2-7/8"	
RAS118	1-1/8"	4-5/8" Bolt Spacing	6-3/16"	1-11/16" Center Line	3-3/8"	
RAS114	1-1/4"	5-1/8" Bolt Spacing	6-9/16"	1-7/8" Center Line	3-3/4"	
RAS138	1-3/8"	5-1/8" Bolt Spacing	6-9/16"	1-7/8" Center Line	3-3/4"	
RAS112	1-1/2"	5-3/8" Bolt Spacing	7-1/16"	1-15/16" Center Line	4"	
RAS134	1-3/4"	5-7/8" Bolt Spacing	7-17/32"	2-1/8" Center Line	4-3/16"	
RAS2	2"	6-15/16" Bolt Spacing	8-3/4"	2-1/2" Center Line	5"	

SEALMASTER®

USA Pillow Block - Skwezloc Collar

- > Premium Pillow Block Bearing
- > Skwezloc Collar For Stronger Hold
- > Cast Iron Housing

SMNP20T

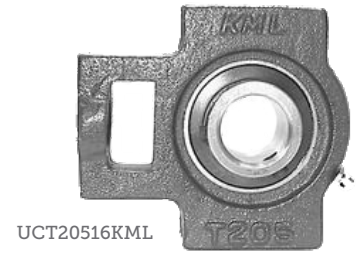
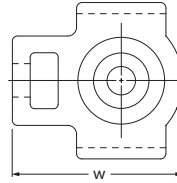
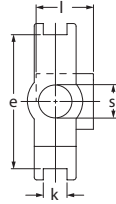


SKU #	Inner Diameter	Length	Overall Length	Mounting	Height	List Price
SMNP20T	1-1/4"	5" Bolt Spacing	6-9/16"	1-7/8" Center Line	3-3/4"	
SMNP24T	1-1/2"	5-13/32" Bolt Spacing	7-1/4"	1-15/16" Center Line	3-15/16"	
SMNP28T	1-3/4"	5-13/16" Bolt Spacing	7-1/2"	2-1/8" Center Line	4-1/4"	
SMNP32T	2"	6-3/4" Bolt Spacing	8-1/8"	2-1/4" Center Line	4-9/16"	



Set Screw Lock, Extended Race

- › Take-Up Bearing
- › Used To Align, Adjust & Maintain Tension



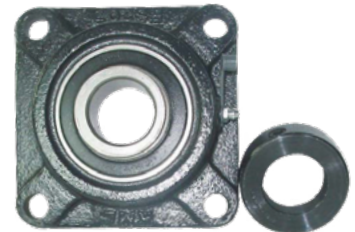
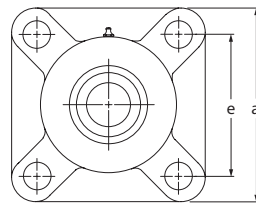
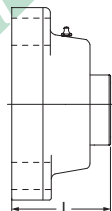
SKU #	Inner Diameter	Width	Length	Mounting	List Price
UCT20412KML	3/4"	3"	3-23/32"	15/32" Slot	
UCT20516KML	1"	3"	3-13/16"	15/32" Slot	
UCST20618KML	1-1/8"	3-1/2"	4-7/16"	17/32" Slot	
UCT20620KML	1-1/4"	3-1/2"	4-7/16"	15/32" Slot	
UCST20620KML	1-1/4"	3-1/2"	4-7/16"	17/32" Slot	
UCT20824KML	1-1/2"	4-1/64"	5-11/16"	5/8" Slot	
UCT20928KML	1-3/4"	4-1/64"	5-11/16"	5/8" Slot	

4 Bolt Flange Bearings



Standard 4 Bolt Flange - Locking Collar

- › 4 Bolt Flange Bearing
- › Standard Race Insert
- › Cast Iron Housing



SAF20516GKML

SKU #	Inner Diameter	Length	Overall Length	Height	List Price
SAF20210GKML	5/8"	2-1/8" Bolt Spacing	2-63/64"	1-17/64"	
SAF20412GKML	3/4"	2-1/2" Bolt Spacing	3-25/64"	1-33/64"	
SAF20514GKML	7/8"	2-3/4" Bolt Spacing	3-3/4"	1-35/64"	
SAF20515GKML	15/16"	2-3/4" Bolt Spacing	3-3/4"	1-35/64"	
SAF20516GKML	1"	2-3/4" Bolt Spacing	3-3/4"	1-35/64"	
SAF20618GKML	1-1/8"	3-9/32" Bolt Spacing	4-1/4"	1-49/64"	
SAF20619GKML	1-3/16"	3-9/32" Bolt Spacing	4-1/4"	1-49/64"	
SAF20620GKML	1-1/4"	3-9/32" Bolt Spacing	4-1/4"	1-49/64"	
SAF20720GKML	1-1/4"	3-5/8" Bolt Spacing	4-19/32"	1-29/32"	
SAF20928GKML	1-3/4"	4-1/8" Bolt Spacing	5-13/32"	2-5/32"	

Bearings & Bushings

4 Bolt Flange Bearings



Standard 4 Bolt Flange - Locking Collar, Extended Race

- > 4 Bolt Flange Bearing
- > Extended Race Insert
- > Cast Iron Housing

HCFS20516KML



SKU #	Inner Diameter	Length	Overall Length	Height	List Price
HCFS20516KML	1"	2-3/4" Bolt Spacing	3-43/64"	1-13/16"	
HCFS20618KML	1-1/8"	3-1/4" Bolt Spacing	4-11/64"	1-31/32"	
HCFS20620KML	1-1/4"	3-1/4" Bolt Spacing	4-11/64"	1-31/32"	
HCFS20720KML	1-1/4"	3-5/8" Bolt Spacing	4-9/16"	2-7/64"	
HCFS20722KML	1-3/8"	3-5/8" Bolt Spacing	4-9/16"	2-7/64"	
HCFS20723KML	1-7/16"	3-5/8" Bolt Spacing	4-9/16"	2-7/64"	
HCFS20824KML	1-1/2"	4" Bolt Spacing	5-5/64"	2-21/64"	
HCFS20926KML	1-5/8"	4-1/8" Bolt Spacing	5-5/16"	2-21/64"	
HCFS20928KML	1-3/4"	4-1/8" Bolt Spacing	5-5/16"	2-21/64"	
HCFS21031KML	1-15/16"	4-3/8" Bolt Spacing	5-5/8"	2-19/32"	
HCFS21132KML	2"	5-1/8" Bolt Spacing	6-3/8"	2-15/16"	

UCF20516KML



Standard 4 Bolt Flange - Set Screw Lock, Extended Race

SKU #	Inner Diameter	Length	Overall Length	Height	List Price
UCF20516KML	1"	2-3/4" Bolt Spacing	3-3/4"	1-13/32"	
UCF20618KML	1-1/8"	3-9/32" Bolt Spacing	4-1/4"	1-37/64"	
UCF20720KML	1-1/4"	3-5/8" Bolt Spacing	4-19/32"	1-3/4"	
UCF20824KML	1-1/2"	4-1/64" Bolt Spacing	5-1/8"	2-1/64"	
UCF20928KML	1-3/4"	4-1/8" Bolt Spacing	5-25/64"	2-1/16"	
UCF21132KML	2"	5-1/8" Bolt Spacing	6-3/8"	2-9/32"	

FYH

Premium 4 Bolt Flange - Locking Collar, Extended Race

- > Premium 4 Bolt Flange Bearing
- > Extended Race Insert
- > Cast Iron Housing

NANF20516



SKU #	Inner Diameter	Length	Overall Length	Height	List Price
NANF20210	5/8"	2-33/64" Bolt Spacing	3-3/8"	1-25/32"	
NANF20412	3/4"	2-33/64" Bolt Spacing	3-3/8"	1-25/32"	

continued on next page...

For current prices and product availability, visit: <https://paulhardware.com/catalog-tool>

...continued from previous page

SKU #	Inner Diameter	Length	Overall Length	Height	List Price
NANF20514	7/8"	2-3/4" Bolt Spacing	3-3/4"	1-27/32"	
NANF20516	1"	2-3/4" Bolt Spacing	3-3/4"	1-27/32"	
NANF20618	1-1/8"	3-17/64" Bolt Spacing	4-1/4"	2"	
NANF20619	1-3/16"	3-17/64" Bolt Spacing	4-1/4"	2"	
NANF20620	1-1/4"	3-17/64" Bolt Spacing	4-1/4"	2"	
NANF20720	1-1/4"	3-5/8" Bolt Spacing	4-19/32"	2-1/8"	
NANF20722	1-3/8"	3-5/8" Bolt Spacing	4-19/32"	2-1/8"	
NANF20723	1-7/16"	3-5/8" Bolt Spacing	4-19/32"	2-1/8"	
NANF20824	1-1/2"	4-1/64" Bolt Spacing	5-1/8"	2-5/16"	
NANF20926	1-5/8"	4-9/64" Bolt Spacing	5-13/32"	2-5/16"	
NANF20928	1-3/4"	4-9/64" Bolt Spacing	5-13/32"	2-5/16"	
NANF21031	1-15/16"	4-3/8" Bolt Spacing	5-5/8"	2-5/8"	
NANF21032	2"	4-3/8" Bolt Spacing	5-5/8"	2-5/8"	
NANF21132	2"	5-1/8" Bolt Spacing	6-3/8"	2-31/32"	
NANF21135	2-3/16"	5-1/8" Bolt Spacing	6-3/8"	2-31/32"	
NANF21236	2-1/4"	5-5/8" Bolt Spacing	6-7/8"	3-1/4"	
NANF21239	2-7/16"	5-5/8" Bolt Spacing	6-7/8"	3-1/4"	

Premium 4 Bolt Flange - Set Screw Lock, Extended Race

SKU #	Inner Diameter	Length	Overall Length	Height	List Price
UCF20516FYH	1"	2-3/4" Bolt Spacing	3-3/4"	1-13/32"	
UCF20620FYH	1-1/4"	3-17/64" Bolt Spacing	4-1/4"	1-19/32"	
UCF20720FYH	1-1/4"	3-5/8" Bolt Spacing	4-19/32"	1-3/4"	
UCF20722FYH	1-3/8"	3-5/8" Bolt Spacing	4-19/32"	1-3/4"	
UCF20824FYH	1-1/2"	4-1/64" Bolt Spacing	5-1/8"	2-1/32"	
UCF20928FYH	1-3/4"	4-9/64" Bolt Spacing	5-13/32"	2-1/16"	
UCF21030FYH	1-7/8"	4-3/8" Bolt Spacing	5-5/8"	2-5/32"	
UCF21132FYH	2"	5-1/8" Bolt Spacing	6-3/8"	2-5/16"	

TIMKEN

Premium 4 Bolt Flange - Locking Collar, Extended Race

- › Premium 4 Bolt Flange Bearing
- › Extended Race Insert
- › Cast Iron Housing



RCJ112

SKU #	Inner Diameter	Length	Overall Length	Height	List Price
RCJ34	3/4"	2-1/2" Bolt Spacing	3-3/8"	1-7/8"	
RCJ1	1"	2-3/4" Bolt Spacing	3-3/4"	1-7/8"	
RCJ118	1-1/8"	3-1/4" Bolt Spacing	4-1/4"	2"	
RCJ114	1-1/4"	3-5/8" Bolt Spacing	4-5/8"	2-1/8"	
RCJ138	1-3/8"	3-5/8" Bolt Spacing	4-5/8"	2-1/8"	
RCJ112	1-1/2"	4" Bolt Spacing	5-1/8"	2-3/8"	
RCJ134	1-3/4"	4-1/8" Bolt Spacing	5-3/8"	2-3/8"	
RCJ2	2"	5-1/8" Bolt Spacing	6-3/8"	2-15/16"	

For current prices and product availability, visit: <https://paulbhardware.com/catalog-tool>

Bearings & Bushings

4 Bolt Flange Bearings

TIMKEN

Premium 4 Bolt Flange - Set Screw Lock, Extended Race

SKU #	Inner Diameter	Length	Overall Length	Height	List Price
YCJ1	1"	2-3/4" Bolt Spacing	3-3/4"	1-9/16"	
YCJ114	1-1/4"	3-5/8" Bolt Spacing	4-5/8"	1-15/16"	
YCJ112	1-1/2"	4" Bolt Spacing	5-1/8"	2-1/8"	
YCJ134	1-3/4"	4-1/8" Bolt Spacing	5-3/8"	2-3/16"	
YCJ2	2"	5-1/8" Bolt Spacing	6-3/8"	2-9/16"	

SEALMASTER®

USA 4 Bolt Flange - Set Screw Lock

- > Premium 4 Bolt Flange Bearing
- > Standard Race Insert
- > Cast Iron Housing



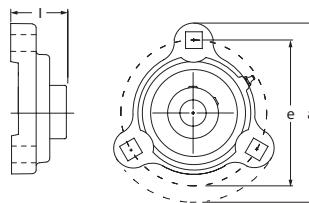
SMSF16

SKU #	Inner Diameter	Length	Overall Length	Height	List Price
SMSF16	1"	2-3/4" Bolt Spacing	3-3/4"	1-7/16"	
SMSF20	1-1/4"	3-5/8" Bolt Spacing	4-5/8"	1-3/4"	
SMSF22	1-3/8"	3-5/8" Bolt Spacing	4-5/8"	1-3/4"	
SMSF23	1-7/16"	3-5/8" Bolt Spacing	4-5/8"	1-3/4"	
SMSF24	1-1/2"	4" Bolt Spacing	5-1/8"	2-1/64"	
SMSF28	1-3/4"	4-1/8" Bolt Spacing	5-3/8"	2-3/64"	
SMSF31	1-15/16"	4-3/8" Bolt Spacing	5-5/8"	2-5/32"	
SMSF32	2"	5-1/8" Bolt Spacing	6-3/8"	2-5/16"	
SMSF39	2-7/16"	5-5/8" Bolt Spacing	6-7/8"	2-11/16"	

3 Bolt Flange Bearings

Set Screw Lock

- > 3 Bolt Flange Bearing
- > Standard Race Insert
- > Cast Iron Housing



SBRFT20516GKML

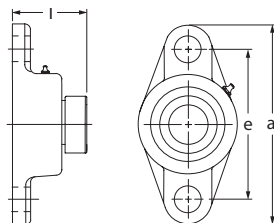
SKU #	Inner Diameter	Length	Overall Length	Height	List Price
SBRFT20516GKML	1"	3" Bolt Spacing	3-3/4"	1-7/32"	
SBRFT20722GKML	1-3/8"	3-15/16" Bolt Spacing	4-13/16"	1-7/16"	
SBRFT20618GKML	1-1/8"	3-9/16" Bolt Spacing	4-9/16"	1-5/16"	
SBRFT20620GKML	1-1/4"	3-9/16" Bolt Spacing	4-9/16"	1-5/16"	
SBRFT20412GKML	3/4"	2-13/16" Bolt Spacing	3-9/16"	1-3/16"	
SBRFT20720GKML	1-1/4"	3-15/16" Bolt Spacing	4-13/16"	1-7/16"	
SBRFT20514GKML	7/8"	3" Bolt Spacing	3-3/4"	1-7/32"	

2 Bolt Flange Bearings



Compact 2 Bolt Flange - Locking Collar

- > 2 Bolt Flange Bearing
- > Standard Race Bearing
- > Compact Ductile Housing



SALF20516GKML

SKU #	Inner Diameter	Length	Overall Length	Height	List Price
SALF2018GKML	1/2"	2-1/2" Bolt Spacing	3-3/16"	1"	
SALF20210GKML	5/8"	2-1/2" Bolt Spacing	3-3/16"	1"	
SALF20412GKML	3/4"	2-13/16" Bolt Spacing	3-35/64"	1-3/16"	
SALF20516GKML	1"	3" Bolt Spacing	3-3/4"	1-1/4"	
SALF20618GKML	1-1/8"	3-9/16" Bolt Spacing	4-7/16"	1-11/32"	
SALF20620GKML	1-1/4"	3-9/16" Bolt Spacing	4-7/16"	1-11/32"	

Compact 2 Bolt Flange - Set Screw Lock



SBLF20516GKML

SKU #	Inner Diameter	Length	Overall Length	Height	List Price
SBLF20210GKML	5/8"	2-1/2" Bolt Spacing	3-3/16"	1"	
SBLF20412GKML	3/4"	2-13/16" Bolt Spacing	3-35/64"	1-3/16"	
SBLF20516GKML	1"	3" Bolt Spacing	3-3/4"	1-1/4"	
SBLF20618GKML	1-1/8"	3-9/16" Bolt Spacing	4-7/16"	1-11/32"	
SBLF20620GKML	1-1/4"	3-9/16" Bolt Spacing	4-7/16"	1-11/32"	

Standard 2 Bolt Flange - Locking Collar

- > 2 Bolt Flange Bearing
- > Standard Race Bearing
- > Cast Iron Housing



SAFT20516GKML

SKU #	Inner Diameter	Length	Overall Length	Height	List Price
SAFT20412GKML	3/4"	3-35/64" Bolt Spacing	4-7/16"	1.694"	
SAFT20514GKML	7/8"	3-57/64" Bolt Spacing	4-29/32"	1.694"	
SAFT20516GKML	1"	3-57/64" Bolt Spacing	4-29/32"	1.694"	
SAFT20618GKML	1-1/8"	4-15/32" Bolt Spacing	5-19/32"	1.872"	
SAFT20620GKML	1-1/4"	4-15/32" Bolt Spacing	5-19/32"	1.872"	
SAFT20720GKML	1-1/4"	5-1/8" Bolt Spacing	6-3/16"	2.01"	
SAFT20722GKML	1-3/8"	5-1/8" Bolt Spacing	6-3/16"	2.01"	
SAFT20824GKML	1-1/2"	5-41/64" Bolt Spacing	6-25/32"	2.304"	

For current prices and product availability, visit: <https://paulbhardware.com/catalog-tool>

Bearings & Bushings

2 Bolt Flange Bearings



SBFT20516GKML

Standard 2 Bolt Flange - Set Screw Lock

SKU #	Inner Diameter	Length	Overall Length	Height	List Price
SBFT20412GKML	3/4"	3-17/32" Bolt Spacing	4-7/16"	1.28"	
SBFT20516GKML	1"	3-57/64" Bolt Spacing	5-1/8"	1.40"	
SBFT20618GKML	1-1/8"	4-19/32" Bolt Spacing	5-13/16"	1.54"	
SBFT20620GKML	1-1/4"	4-19/32" Bolt Spacing	5-13/16"	1.54"	

Standard 2 Bolt Flange - Set Screw Lock, Extended Race

- > 2 Bolt Flange Bearing
- > Extended Race Bearing
- > Cast Iron Housing



UCFL20516KML

SKU #	Inner Diameter	Length	Overall Length	Height	List Price
UCFL20516KML	1"	3-57/64" Bolt Spacing	5-1/8"	1-13/32"	
UCFL20620KML	1-1/4"	4-19/32" Bolt Spacing	5-13/16"	1-37/64"	
UCFL20722KML	1-3/8"	5-1/8" Bolt Spacing	6-11/32"	1-3/4"	
UCFL21132KML	2"	7-1/4" Bolt Spacing	8-13/16"	2-9/32"	

FYH

Premium 2 Bolt Flange - Locking Collar, Extended Race

- > Premium 2 Bolt Flange Bearing
- > Extended Race Insert
- > Cast Iron Housing



NANFL20516

SKU #	Inner Diameter	Length	Overall Length	Height	List Price
NANFL20210	5/8"	3-17/32" Bolt Spacing	4-7/16"	1-25/32"	
NANFL20412	3/4"	3-17/32" Bolt Spacing	4-7/16"	1-25/32"	
NANFL20514	7/8"	3-57/64" Bolt Spacing	5-1/8"	1-27/32"	
NANFL20516	1"	3-57/64" Bolt Spacing	5-1/8"	1-27/32"	
NANFL20618	1-1/8"	4-19/32" Bolt Spacing	5-13/16"	2"	
NANFL20620	1-1/4"	4-19/32" Bolt Spacing	5-13/16"	2"	
NANFL20720	1-1/4"	5-1/8" Bolt Spacing	6-11/32"	2-1/8"	
NANFL20722	1-3/8"	5-1/8" Bolt Spacing	6-11/32"	2-1/8"	
NANFL20723	1-7/16"	5-1/8" Bolt Spacing	6-11/32"	2-1/8"	
NANFL20824	1-1/2"	5-21/32" Bolt Spacing	6-7/8"	2-5/16"	
NANFL21132	2"	7-1/4" Bolt Spacing	8-13/16"	2-31/32"	



Standard Insert Bearing - Set Screw Lock

SB20516GKML



SB20516KML



SKU #	Inner Diameter	Outer Diameter	Width	Style	List Price
SB2018KML	1/2"	40mm	7/8"	Pregreased	
SB20210GKML	5/8"	40mm	31/32"	Greasable	
SB20210KML	5/8"	40mm	31/32"	Pregreased	
SB20412GKML	3/4"	47mm	1-1/16"	Greasable	
SB20412KML	3/4"	47mm	1-1/16"	Pregreased	
SB20514GKML	7/8"	52mm	1-1/16"	Greasable	
SB20514KML	7/8"	52mm	1-1/16"	Pregreased	
SB20516GKML	1"	52mm	1-1/16"	Greasable	
SB20516KML	1"	52mm	1-1/16"	Pregreased	
SB20618GKML	1-1/8"	62mm	1-3/16"	Greasable	
SB20618KML	1-1/8"	62mm	1-3/16"	Pregreased	
SB20620GKML	1-1/4"	62mm	1-3/16"	Greasable	
SB20620KML	1-1/4"	62mm	1-3/16"	Pregreased	
SB20720GKML	1-1/4"	72mm	1-1/4"	Greasable	
SB20720KML	1-1/4"	72mm	1-1/4"	Pregreased	
SB20722GKML	1-3/8"	72mm	1-1/4"	Greasable	
SB20824GKML	1-1/2"	80mm	1-11/32"	Greasable	

Standard Insert Bearing - Set Screw Lock, Extended Race



UC20516KML

SKU #	Inner Diameter	Outer Diameter	Width	Style	List Price
UC20210KML	5/8"	47mm	1-1/4"	Greasable	
UC20412KML	3/4"	47mm	1-1/4"	Greasable	
UC20514KML	7/8"	52mm	1-11/32"	Greasable	
UC20516KML	1"	52mm	1-11/32"	Greasable	
UC20618KML	1-1/8"	62mm	1-1/2"	Greasable	
UC20620KML	1-1/4"	62mm	1-1/2"	Greasable	
UC20720KML	1-1/4"	72mm	1-11/16"	Greasable	
UC20722KML	1-3/8"	72mm	1-11/16"	Greasable	
UC20723KML	1-7/16"	72mm	1-11/16"	Greasable	
UC20824KML	1-1/2"	80mm	1-15/16"	Greasable	
UC20928KML	1-3/4"	85mm	1-15/16"	Greasable	
UC21031KML	1-15/16"	90mm	2-1/32"	Greasable	
UC21132KML	2"	100mm	2-3/16"	Greasable	

For current prices and product availability, visit: <https://paulbhardware.com/catalog-tool>

Bearings & Bushings

Set Screw Insert Bearings

FYH

Premium Insert Bearing - Set Screw Lock



SB20516K5

SKU #	Inner Diameter	Outer Diameter	Width	Style	List Price
SB20210KG5	5/8"	47mm	31/32"	Pregreased	
SB20210KP8G5	5/8"	47mm	31/32"	Greasable	
SB20412	3/4"	47mm	.984	Pregreased	
SB20412KP8G5	3/4"	47mm	.984	Greasable	
SB20420MM	20mm	47mm	.984"	Pregreased	
SB20516K5	1"	52mm	1.063"	Pregreased	
SB20516KP8G5	1"	52mm	1.063"	Greasable	
SB20620KP8G5	1-1/4"	62mm	1.181"	Greasable	
SB20525MM	25mm	52mm	1.063"	Pregreased	
SB20618KP8G5	1-1/8"	62mm	1.181"	Pregreased	
SB20720KG5	1-1/4"	72mm	1.260"	Pregreased	
SB20720KP8G5	1-1/4"	72mm	1.260"	Greasable	

Premium Insert Bearing - Set Screw Lock, Extended Race



UC20516FYH

SKU #	Inner Diameter	Outer Diameter	Width	Style	List Price
UC20210FYH	5/8"	47mm	1.22"	Greasable	
UC20412FYH	3/4"	47mm	1.22"	Greasable	
UC20420MM	20mm	47mm	1.22"	Greasable	
UC20516FYH	1"	52mm	1.343"	Greasable	
UC20525MM	25mm	52mm	1.343"	Greasable	
UC20618FYH	1-1/8"	62mm	1.50"	Greasable	
UC20620FYH	1-1/4"	62mm	1.50"	Greasable	
UC20630MM	30mm	62mm	1.50"	Greasable	
UC20720FYH	1-1/4"	72mm	1.689"	Greasable	
UC20722FYH	1-3/8"	72mm	1.689"	Greasable	
UC20723FYH	1-7/16"	72mm	1.689"	Greasable	
UC20735MM	35mm	72mm	1.689"	Greasable	
UC20824FYH	1-1/2"	80mm	1.937"	Greasable	
UC20840MM	40mm	80mm	1.937"	Greasable	
UC20928FYH	1-3/4"	85mm	1.937"	Greasable	
UC20945MM	45mm	85mm	1.937"	Greasable	
UC21030FYH	1-7/8"	90mm	2.031"	Greasable	
UC21031FYH	1-15/16"	90mm	2.031"	Greasable	
UC21132FYH	2"	100mm	2.189"	Greasable	
UC21135FYH	2-3/16"	100mm	2.189"	Greasable	
UC21340FYH	2-1/2"	120mm	2.563"	Greasable	

UC21547FYH 1-15/16" 70mm 2.563" Greasable
918

For current prices and product availability, visit: <https://paulhardware.com/catalog-tool>

Set Screw Insert Bearings



Triple Lip Seal Insert Bearing - Set Screw Lock, Extended Race

- › Triple Lip Seal Insert Bearing
- › Corrosion Resistant Black Oxide Coating
- › Great For Agricultural Applications



UC20516R3BOKML

SKU #	Inner Diameter	Outer Diameter	Width	Style	List Price
UC20516R3BOKML	1"	52mm	1-11/32"	Greasable	
UC20720R3BOKML	1-1/4"	72mm	1-11/16"	Greasable	
UC20723R3BOKML	1-7/16"	72mm	1-11/16"	Greasable	
UC20824R3BOKML	1-1/2"	80mm	1-15/16"	Greasable	
UC20928R3BOKML	1-3/4"	85mm	1-15/16"	Greasable	
UC21132R3BOKML	2"	100mm	2-3/16"	Greasable	

Lock Collar Insert Bearings



SA20516GKML

SA20516KML

Standard Insert Bearing - Locking Collar

SKU #	Inner Diameter	Outer Diameter	Width	Style	List Price
SA2018GKML	1/2"	40mm	1-1/8"	Greasable	
SA2018KML	1/2"	40mm	1-1/8"	Pregreased	
SA20210GKML	5/8"	40mm	1-1/8"	Greasable	
SA20210KML	5/8"	40mm	1-1/8"	Pregreased	
SA20412GKML	3/4"	47mm	1-1/4"	Greasable	
SA20412KML	3/4"	47mm	1-1/4"	Pregreased	
SA20514GKML	7/8"	52mm	1-1/4"	Greasable	
SA20514KML	7/8"	52mm	1-1/4"	Pregreased	
SA20515GKML	15/16"	52mm	1-1/4"	Greasable	
SA20515KML	15/16"	52mm	1-1/4"	Pregreased	
SA20516GKML	1"	52mm	1-1/4"	Greasable	
SA20516KML	1"	52mm	1-1/4"	Pregreased	
SA20617GKML	1-1/16"	62mm	1-13/32"	Greasable	
SA20618GKML	1-1/8"	62mm	1-13/32"	Greasable	
SA20618KML	1-1/8"	62mm	1-13/32"	Pregreased	

continued on next page...

Bearings & Bushings

Lock Collar Insert Bearings

...continued from previous page

SKU #	Inner Diameter	Outer Diameter	Width	Style	List Price
SA20619GKML	1-3/16"	62mm	1-13/32"	Greasable	
SA20619KML	1-3/16"	62mm	1-13/32"	Pregreased	
SA20620GKML	1-1/4"	62mm	1-13/32"	Greasable	
SA20620KML	1-1/4"	62mm	1-13/32"	Pregreased	
SA20720GKML	1-1/4"	72mm	1-17/32"	Greasable	
SA20720KML	1-1/4"	72mm	1-17/32"	Pregreased	
SA20722GKML	1-3/8"	72mm	1-17/32"	Greasable	
SA20722KML	1-3/8"	72mm	1-17/32"	Pregreased	
SA20723GKML	1-7/16"	72mm	1-17/32"	Greasable	
SA20723KML	1-7/16"	72mm	1-17/32"	Pregreased	
SA20824GKML	1-1/2"	80mm	1-23/32"	Greasable	
SA20824KML	1-1/2"	80mm	1-23/32"	Pregreased	
SA20825GKML	1-9/16"	80mm	1-23/32"	Greasable	
SA20928GKML	1-3/4"	85mm	1-23/32"	Greasable	
SA20928KML	1-3/4"	85mm	1-23/32"	Pregreased	
SA21032GKML	2"	90mm	1-23/32"	Greasable	
SA21032KML	2"	90mm	1-23/32"	Pregreased	



Standard Insert Bearing -
Locking Collar, Extended Race



HC20516KML

SKU #	Inner Diameter	Outer Diameter	Width	Style	List Price
HC20412KML	3/4"	47mm	1-23/32"	Greasable	
HC20514KML	7/8"	52mm	1-3/4"	Greasable	
HC20516KML	1"	52mm	1-3/4"	Greasable	
HC20618KML	1-1/8"	62mm	1-29/32"	Greasable	
HC20619KML	1-3/16"	62mm	1-29/32"	Greasable	
HC20620KML	1-1/4"	62mm	1-29/32"	Greasable	
HC20720KML	1-1/4"	72mm	2-1/64"	Greasable	
HC20722KML	1-3/8"	72mm	2-1/64"	Greasable	
HC20723KML	1-7/16"	72mm	2-1/64"	Greasable	
HC20824KML	1-1/2"	80mm	2-7/32"	Greasable	
HC20926KML	1-5/8"	85mm	2-7/32"	Greasable	
HC20927KML	1-11/16"	85mm	2-7/32"	Greasable	
HC20928KML	1-3/4"	85mm	2-7/32"	Greasable	
HC21030KML	1-7/8"	90mm	2-7/32"	Greasable	
HC21031KML	1-15/16"	90mm	2-7/32"	Greasable	
HC21032KML	2"	90mm	2-7/32"	Greasable	
HC21132KML	2"	100mm	2-15/32"	Greasable	

Lock Collar Insert Bearings

FYH



SA20516FP9



SA20516FP7

Premium Insert Bearing - Locking Collar

SKU #	Inner Diameter	Outer Diameter	Width	Style	List Price
SA2018	1/2"	40mm	1.122"	Pregreased	
SA20210FP7	5/8"	40mm	1.122"	Pregreased	
SA20210FP9	5/8"	40mm	1.122"	Greasable	
SA20412FP7	3/4"	47mm	1.161"	Pregreased	
SA20514FP7	7/8"	52mm	1.201"	Pregreased	
SA20514FP9	7/8"	52mm	1.201"	Greasable	
SA20515FP7	15/16"	52mm	1.201"	Pregreased	
SA20516FP7	1"	52mm	1.201"	Pregreased	
SA20516FP9	1"	52mm	1.201"	Greasable	
SA20617FP7	1-1/16"	62mm	1.335"	Pregreased	
SA20618FP7	1-1/8"	62mm	1.335"	Pregreased	
SA20618FP9	1-1/8"	62mm	1.335"	Greasable	
SA20619FP7	1-3/16"	62mm	1.335"	Pregreased	
SA20619FP9	1-3/16"	62mm	1.335"	Greasable	
SA20620FP7	1-1/4"	62mm	1.335"	Pregreased	
SA20620FP9	1-1/4"	62mm	1.437"	Greasable	
SA20720FP7	1-1/4"	72mm	1.437"	Pregreased	
SA20720FP9	1-1/4"	72mm	1.437"	Greasable	
SA20721FP7	1-5/16"	72mm	1.437"	Pregreased	
SA20722FP7	1-3/8"	72mm	1.437"	Pregreased	
SA20722FP9	1-3/8"	72mm	1.437"	Greasable	
SA20723FP7	1-7/16"	72mm	1.437"	Pregreased	
SA20723FP9	1-7/16"	72mm	1.437"	Greasable	
SA20824FP7	1-1/2"	80mm	1.595"	Pregreased	
SA20824FP9	1-1/2"	80mm	1.595"	Greasable	
SA20926FP7	1-5/8"	85mm	1.720"	Pregreased	
SA20928FP7	1-3/4"	85mm	1.720"	Pregreased	
SA20928FP9	1-3/4"	85mm	1.720"	Greasable	

FYH

Premium Insert Bearing - Locking Collar, Extended Race

SKU #	Inner Diameter	Outer Diameter	Width	Style	List Price
NA2018	1/2"	47mm	1.720"	Greasable	
NA20210	5/8"	47mm	1.720"	Greasable	
NA20412	3/4"	47mm	1.720"	Greasable	
NA20514	7/8"	52mm	1.748"	Greasable	
NA20515	15/16"	52mm	1.748"	Greasable	

For current prices and product availability, visit: <https://paulbhardware.com/catalog-tool>

Bearings & Bushings

Lock Collar Insert Bearings

FYH



NA20516

SKU #	Inner Diameter	Outer Diameter	Width	Style	List Price
NA20516	1"	52mm	1.748"	Greasable	
NA20617	1-1/16"	62mm	1.906"	Greasable	
NA20618	1-1/8"	62mm	1.906"	Greasable	
NA20619	1-3/16"	62mm	1.906"	Greasable	
NA20620	1-1/4"	62mm	1.906"	Greasable	
NA20720	1-1/4"	72mm	2.012"	Greasable	
NA20721	1-5/16"	72mm	2-1/64"	Greasable	
NA20722	1-3/8"	72mm	2-1/64"	Greasable	
NA20723	1-7/16"	72mm	2-1/64"	Greasable	
NA20735MM	35mm	72mm	2-1/64"	Greasable	
NA20824	1-1/2"	80mm	2.217"	Greasable	
NA20825	1-9/16"	80mm	2.217"	Greasable	
NA20840MM	40mm	80mm	2.217"	Greasable	
NA20926	1-5/8"	85mm	2.217"	Greasable	
NA20927	1-11/16"	85mm	2.217"	Greasable	
NA20928	1-3/4"	85mm	2.217"	Greasable	
NA21030	1-7/8"	90mm	2.469"	Greasable	
NA21031	1-15/16"	90mm	2.469"	Greasable	
NA21132	2"	100mm	2.811"	Greasable	
NA21135	2-3/16"	100mm	2.811"	Greasable	
NA21236	2-1/4"	110mm	3.063"	Greasable	
NA21239	2-7/16"	110mm	3.063"	Greasable	
NA21547	2-15/16"	130mm	3.626"	Greasable	

TIMKEN



RA104RRB



GRA100RRB

Premium Insert Bearing - Locking Collar

SKU #	Inner Diameter	Outer Diameter	Width	Style	List Price
GRA012RRB	3/4"	47mm	1.22"	Greasable	
GRA100RRB	1"	52mm	1.22"	Greasable	
GRA102RRB	1-1/8"	62mm	1.406"	Greasable	
GRA103RRB2	1-1/4"	62mm	1.406"	Greasable	
GRA104RRB	1-1/4"	72mm	1.531"	Greasable	
GRA106RRB	1-3/8"	72mm	1.531"	Greasable	
GRA108RRB	1-1/2"	80mm	1.720"	Greasable	
GRA112RRB	1-3/4"	85mm	1.720"	Greasable	

continued on next page...

For current prices and product availability, visit: <https://paulhardware.com/catalog-tool>

Lock Collar Insert Bearings

...continued from previous page

SKU #	Inner Diameter	Outer Diameter	Width	Style	List Price
RA014RRB	7/8"	52mm	1.22"	Pregreased	
RA100RRB	1"	52mm	1.22"	Pregreased	
RA102RRB	1-1/8"	62mm	1.406"	Pregreased	
RA103RRB2	1-1/4"	62mm	1.406"	Pregreased	
RA104RRB	1-1/4"	72mm	1.531"	Pregreased	
RA106RRB	1-3/8"	72mm	1.531"	Pregreased	
RA108RRB	1-1/2"	80mm	1.72"	Pregreased	
RA112RRB	1-3/4"	85mm	1.72"	Pregreased	

TIMKEN

Premium Insert Bearing - Locking Collar, Extended Race



G1100KRRB

SKU #	Inner Diameter	Outer Diameter	Width	Style	List Price
G1100KRRB	1"	52mm	1.748"	Greasable	
G1103KRRB3	1-1/4"	62mm	1.906"	Greasable	
G1104KRRB	1-1/4"	72mm	2.016"	Greasable	
G1106KRRB	1-3/8"	72mm	2.016"	Greasable	
G1108KRRB	1-1/2"	80mm	2.22"	Greasable	
G1112KRRB	1-3/4"	85mm	2.22"	Greasable	



Standard Flat OD Insert Bearing - Locking Collar



CSA20516KML

SKU #	Inner Diameter	Outer Diameter	Width	Style	List Price
CSA2018KML	1/2"	40mm	1-1/8"	Pregreased	
CSA20210KML	5/8"	40mm	1-1/8"	Pregreased	
CSA20412KML	3/4"	47mm	1-1/4"	Pregreased	
CSA20514KML	7/8"	52mm	1-1/4"	Pregreased	
CSA20516KML	1"	52mm	1-1/4"	Pregreased	
CSA20618KML	1-1/8"	62mm	1-13/32"	Pregreased	
CSA20620KML	1-1/4"	62mm	1-13/32"	Pregreased	
CSA20722KML	1-3/8"	72mm	1-17/32"	Pregreased	
CSA20723KML	1-7/16"	72mm	1-17/32"	Pregreased	
CSA20824KML	1-1/2"	80mm	1-23/32"	Pregreased	

Bearings & Bushings

Lock Collar Insert Bearings

FYH

Premium Flat OD Insert Bearing - Locking Collar



SAA20516

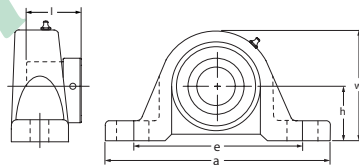
SKU #	Inner Diameter	Outer Diameter	Width	Style	List Price
SAA2018	1/2"	40mm	1.13"	Pregreased	
SAA20210	5/8"	40mm	1.13"	Pregreased	
SAA20412	3/4"	47mm	1.22"	Pregreased	
SAA20516	1"	52mm	1.22"	Pregreased	
SAA20618	1-1/8"	62mm	1.406"	Pregreased	
SAA20620	1-1/4"	62mm	1.406"	Pregreased	
SAA20722	1-3/8"	72mm	1.531"	Pregreased	
SAA20824	1-1/2"	80mm	1.720"	Pregreased	

Stainless Steel Bearings



Set Screw Lock, Extended Race

- › Pillow Block Bearing
- › 304 Grade Housing, 440C Bearing
- › Metal Backed Silicone Rubber Barrier Seal
- › Great For Wet Or Corrosive Environments & Food Processing Equipment



SSUCP20516KML

SKU #	Inner Diameter	Length	Overall Length	Height	List Price
SSUCP20516KML	1"	4-1/8" Bolt Spacing	5-1/2"	2-3/4"	
SSUCP20620KML	1-1/4"	4-49/64" Bolt Spacing	6-1/2"	3-9/32"	

Set Screw Lock, Extended Race

- › 2 Bolt Flange Bearing
- › 304 Grade Housing, 440C Bearing
- › Metal Backed Silicone Rubber Barrier Seal
- › Great For Wet Or Corrosive Environments & Food Processing Equipment



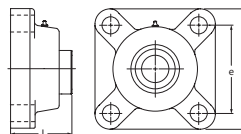
SSUCFL20516KML

SKU #	Inner Diameter	Length	Overall Length	Height	List Price
SSUCFL20516KML	1"	3-57/64" Bolt Spacing	5-1/8"	1-13/32"	
SSUCFL20620KML	1-1/4"	4-19/32" Bolt Spacing	5-13/16"	1-37/64"	

For current prices and product availability, visit: <https://paulhardware.com/catalog-tool>



- > 4 Bolt Flange Bearing
- > 304 Grade Housing, 440C Bearing
- > Metal Backed Silicone Rubber Barrier Seal
- > Great For Wet Or Corrosive Environments & Food Processing Equipment



SSUCF20516KML

SKU #	Inner Diameter	Length	Overall Length	Height	List Price
SSUCF20516KML	1"	2-3/4" Bolt Spacing	3-3/4"	1-13/32"	
SSUCF20620KML	1-1/4"	3-9/32" Bolt Spacing	4-1/4"	1-49/64"	

Set Screw Lock, Extended Race

- > Stainless Steel Insert Bearing
- > 304 Grade Housing, 440C Bearing
- > Metal Backed Silicone Rubber Barrier Seal
- > Great For Wet Or Corrosive Environments & Food Processing Equipment



SSUC20516KML

SKU #	Inner Diameter	Outer Diameter	List Price	SKU #	Inner Diameter	Outer Diameter	List Price
SSUC2018KML	1/2"	47 mm		SSUC20516KML	1"	52 mm	
SSUC20210KML	5/8"	47 mm		SSUC20618KML	1-1/8"	62 mm	
SSUC20412KML	3/4"	47 mm		SSUC20620KML	1-1/4"	62mm	
SSUC20514KML	7/8"	52 mm		SSUC20824KML	1-1/2"	80 mm	

Stainless Steel Pillow Block Housing



SSP205KML

SKU #	Inner Diameter	Length	Overall Length	Height	List Price
SSP204KML	47 mm	3-3/4" Bolt Spacing	5"	2-9/16"	
SSP205KML	52 mm	4-1/8" Bolt Spacing	5-1/2"	2-3/4"	
SSP206KML	62 mm	4-49/64" Bolt Spacing	6-1/2"	3-9/32"	
SSP208KML	85 mm	5-25/64" Bolt Spacing	7-1/4"	3-15/16"	

Stainless Steel 4 Bolt Flange Housing



SSF205KML

SKU #	Length	Overall Length	List Price	SKU #	Length	Overall Length	List Price
SSF204KML	2-1/2" Bolt Spacing	3-3/8"		SSF206KML	3-1/4" Bolt Spacing	4-1/4"	
SSF205KML	2-3/4" Bolt Spacing	3-3/4"		SSF208KML	4" Bolt Spacing	5-1/4"	

Bearings & Bushings

Stainless Steel Bearings



S62052RSKML

Stainless Steel Radial Ball Bearing

SKU #	Inner Diameter	Outer Diameter	Width	List Price	SKU #	Inner Diameter	Outer Diameter	Width	List Price
S60032RSKML	17 mm	35 mm	10 mm		S62042RSKML	20 mm	47 mm	14 mm	
S60042RSKML	20 mm	42 mm	12 mm		S62052RSKML	25 mm	52 mm	15 mm	
S62022RSKML	15 mm	35 mm	11 mm		S62062RSKML	30 mm	62 mm	16 mm	
S62032RSKML	17 mm	40 mm	12 mm						

Spherical Bearings



- › Spherical Roller Pillow Block Bearing
- › Self-Aligning Capabilities
- › Converts Expansion/Non-Expansion
- › Triple Lip Seal Positive Contact Seal
- › For Heavy-Duty Applications



XS2P40824

SKU #	Inner Diameter	Length	Overall Length	Mounting	Height	Features	List Price
XS2P40822	1-3/8"	5-9/32" Bolt Spacing	7-3/8"	1-7/8" Center Line	3-3/4"	Locking Collar	
XS2P40823	1-7/16"	5-9/32" Bolt Spacing	7-3/8"	1-7/8" Center Line	3-3/4"	Locking Collar	
XS2P40824	1-1/2"	5-9/32" Bolt Spacing	7-3/8"	1-7/8" Center Line	3-3/4"	Locking Collar	
XS2P41031	1-15/16"	6-17/32" Bolt Spacing	8-29/32"	2-1/4" Center Line	4-1/2"	Locking Collar	
XS2P41032	2"	6-17/32" Bolt Spacing	8-29/32"	2-1/4" Center Line	4-1/2"	Locking Collar	
XS2P41339	2-7/16"	7-11/16" Bolt Spacing	10-1/4"	2-3/4" Center Line	5-19/32"	Locking Collar	

- › Spherical Roller 4 Bolt Flange Bearing
- › Self-Aligning Capabilities
- › Converts Expansion/Non-Expansion
- › Triple Lip Seal Positive Contact Seal
- › For Heavy-Duty Applications



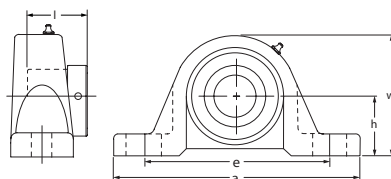
XS4F41032

SKU #	Inner Diameter	Length	Overall Length	Height	List Price
XS4F40822	1-3/8"	3-17/32" Bolt Spacing	4-3/4"	2-3/4"	
XS4F40823	1-7/16"	3-17/32" Bolt Spacing	4-3/4"	2-3/4"	
XS4F40824	1-1/2"	3-17/32" Bolt Spacing	4-3/4"	2-3/4"	
XS4F41031	1-15/16"	4-1/16" Bolt Spacing	5-5/16"	3-5/32"	
XS4F41032	2"	4-1/16" Bolt Spacing	5-5/16"	3-5/32"	
XS4F41339	2-7/16"	4-25/16" Bolt Spacing	6-1/8"	3-17/32"	

For current prices and product availability, visit: <https://paulhardware.com/catalog-tool>



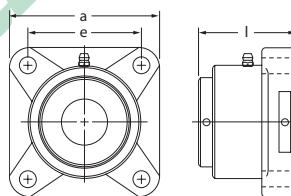
- › Type E Pillow Block
- › For The Most Demanding Applications
- › Heavy-Duty Cast Iron Housing
- › Dual Lip Medium Contact Seals
- › Uses Timken Roller Bearings



20020200

SKU #	Inner Diameter	Length	Overall Length	Mounting	Height	List Price
20020112	1-3/4"	7" Bolt Spacing	8-7/8"	2-1/4" Center Line	4-1/2"	
20020115	1-15/16"	7" Bolt Spacing	8-7/8"	2-1/4" Center Line	4-1/2"	
20020200	2"	7" Bolt Spacing	8-7/8"	2-1/4" Center Line	4-1/2"	
20020203	2-3/16"	7-3/4" Bolt Spacing	9-5/8"	2-1/2" Center Line	5"	
20020207	2-7/16"	8-1/2" Bolt Spacing	10-1/2"	2-3/4" Center Line	5-1/2"	
20020215	2-15/16"	9-1/2" Bolt Spacing	12"	3-1/8" Center Line	5-1/2"	
20020300	3"	9-1/2" Bolt Spacing	12"	3-1/8" Center Line	6-1/4"	
20020307	3-7/16"	11" Bolt Spacing	14"	3-3/4" Center Line	7-1/2"	

- › Type E 4 Bolt Flange Bearing
- › For The Most Demanding Applications
- › Heavy-Duty Cast Iron Housing
- › Dual Lip Medium Contact Seals
- › Uses Timken Roller Bearings



20050200

SKU #	Inner Diameter	Length	Overall Length	Height	List Price
20050112	1-3/4"	4-3/8" Bolt Spacing	5-5/8"	3-5/8"	
20050200	2"	4-3/8" Bolt Spacing	5-5/8"	3-5/8"	
20050215	2-15/16"	6" Bolt Spacing	7-3/4"	4-11/16"	
20050307	3-7/16"	7" Bolt Spacing	9-1/4"	5-1/4"	

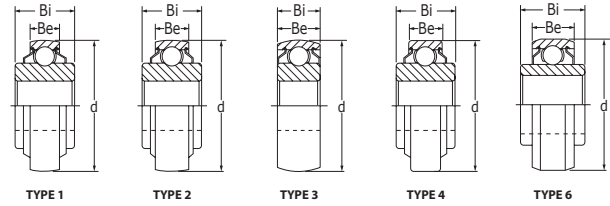
Bearings & Bushings

Agricultural Bearings



TIMKEN

- > Agricultural Implement/Disc Bearing
- > Triple Lip Seals Protect Against Dust And Dirt



Hex Bore Ag Bearing



206KRRB6KML

SKU #	Inner Diameter	Outer Diameter	Width	Style	Brand	List Price
206KRR6KML	1"	62 mm	.945" Inner, .63" Outer Race	Flat OD	KML	
205KRRB2	7/8	52 mm	1" Inner, .591" Outer Race	Spherical OD	KML	
205KRRB2TK	7/8"	52 mm	1" Inner, .591" Outer Race	Spherical OD	Timken	
206KRRB6KML	1"	62 mm	.945" Inner, .63" Outer Race	Spherical OD	KML	
207KRRB12	1-1/8"	72 mm	.984" Inner, .67" Outer Race	Spherical OD	KML	
207KRRB17	1-1/4"	72 mm	.984" Inner, .67" Outer Race	Spherical OD	KML	
207KRRB17TK	1-1/4"	72 mm	.984" Inner, .67" Outer Race	Spherical OD	Timken	



TIMKEN

Round Bore Ag Bearing



W209PPB4



W208PPB7KML



GW211PPB13KML

SKU #	Inner Diameter	Outer Diameter	Width	Style	Brand	List Price
203RR3TK	5/8"	2"	.59"	Flat OD	Timken	
205KRP2TK	3/4"	2.0472"	.83" Inner, .59" Outer Race	Flat OD	Timken	
203KRR2KML	.64"	40 mm	.72" Inner, .472" Outer Race	Flat OD	KML	
W208PPB6KML	1"	80 mm	1.438" Inner, .709" Outer Race	Spherical OD	KML	
W208PPB7KML	1-3/16"	80 mm	1.188" Inner, .709" Outer Race	Spherical OD	KML	
W208PPB7	1-3/16"	80 mm	1.188" Inner, .709" Outer Race	Spherical OD	Timken	
W209PPB4KML	1.535"	85 mm	1.188"	Spherical OD	KML	
W209PPB4	1.535"	85 mm	1.188"	Spherical OD	Timken	
GW211PPB13KML	1.785"	100 mm	1.312" Inner, .984" Outer Race	Spherical OD	KML	
W210PPB2	1.938"	90 mm	1.188"	Spherical OD	Timken	

BEARINGS & BUSHINGS

Bearings & Bushings

Agricultural Bearings



W208PP8KML



GW208PPB5KML

Square Bore Ag Bearing

SKU #	Inner Diameter	Outer Diameter	Width	Style	Brand	List Price
W208PPB11	7/8"	3.376"	1.437" Inner, 1.89" Outer Race	Spherical OD	Timken	
W208PP5KML	1-1/8"	80 mm	1.438" Inner, .709" Outer Race	Flat OD	KML	
W208PP5	1-1/8"	80 mm	1.438" Inner, .709" Outer Race	Flat OD	Timken	
W208PP8KML	1-1/8"	80 mm	1.438" Inner, 1.188" Outer Race	Flat OD	KML	
W208PP8	1-1/8"	80 mm	1.438" Inner, 1.188" Outer Race	Flat OD	Timken	
W208PPB5	1-1/8"	80 mm	1.438" Inner, .709" Outer Race	Spherical OD	Timken	
W208PPB5KML	1-1/8"	80 mm	1.438" Inner, .709" Outer Race	Spherical OD	KML	
GW208PPB5KML	1-1/8"	80 mm	1.438" Inner, .827" Outer Race	Spherical OD	KML	
W208PPB8KML	1-1/8"	80 mm	1.438" Inner, 1.188" Outer Race	Spherical OD	KML	
GW209PPB5KML	1-1/4"	85 mm	1.438" Inner, 1.188" Outer Race	Spherical OD	KML	
W209PPB5KML	1-1/4"	85 mm	1.438" Inner, 1.188" Outer Race	Spherical OD	KML	
W211PPB3KML	1-1/2"	100 mm	1.312"	Spherical OD	KML	
GW211PP3	1-1/2"	100 mm	1.312"	Spherical OD	Timken	
GW209PPB4KML	1.535"	85 mm	1.188"	Spherical OD	KML	
GW209PPB11KML	1.781"	85 mm	1.438" Inner, .866" Outer Race	Spherical OD	KML	
GW209PPB11	1.781"	85 mm	1.438" Inner, .866" Outer Race	Spherical OD	Timken	

Bearing Housings



PE205KML

Pillow Block, Housing Only

SKU #	Inner Diameter	Length	Overall Length	Height	List Price
PE204KML	47 mm	3-3/4" Bolt Spacing	5"	2-9/16"	
PE205KML	52 mm	4-1/8" Bolt Spacing	5-1/2"	2-3/4"	
PE206KML	62 mm	4-49/64" Bolt Spacing	6-1/2"	3-9/32"	
PE207KML	72 mm	5" Bolt Spacing	6-9/16"	3-11/16"	
PE208KML	80 mm	5-25/64" Bolt Spacing	7-1/4"	3-15/16"	
PE209KML	85 mm	5-3/4" Bolt Spacing	7-15/32"	4-1/4"	
PE210KML	90 mm	6-1/4" Bolt Spacing	8-1/8"	4-1/2"	
PE211KML	100 mm	6-23/32" Bolt Spacing	8-5/8"	4-31/32"	
PE212KML	110 mm	7-1/4" Bolt Spacing	9-1/2"	5-7/16"	

For current prices and product availability, visit: <https://paulbhardware.com/catalog-tool>

Bearings & Bushings

Bearing Housings



FL205KML

2 Bolt Flange, Housing Only

SKU #	Inner Diameter	Length	Overall Length	Height	List Price
FL204KML	47 mm	3-17/32" Bolt Spacing	4-7/16"	1"	
FL205KML	52 mm	3-57/64" Bolt Spacing	5-1/8"	1-1/16"	
FL206KML	62 mm	4-19/32"	5-13/16"	1-1/4"	
FL207KML	72 mm	5-1/8" Bolt Spacing	6-11/32"	1-11/32"	
FL208KML	80 mm	5-11/16" Bolt Spacing	6-7/8"	1-13/32"	
FL209KML	85 mm	5-13/16" Bolt Spacing	7-13/32"	1-1/2"	
FL210KML	90 mm	6-3/16" Bolt Spacing	7-3/4"	1-9/16"	
FL211KML	100 mm	7-1/4" Bolt Spacing	8-13/16"	1-11/16"	



RFT205KML

3 Bolt Flange, Housing Only

SKU #	Inner Diameter	Length	Overall Length	Height	List Price
RFT204KML	47 mm	2-13/16" Bolt Spacing	3-9/16"	31/32"	
RFT205KML	52 mm	3" Bolt Spacing	3-3/4"	1-1/16"	
RFT206KML	62 mm	3-9/16" Bolt Spacing	4-9/16"	1-3/16"	
RFT207KML	72 mm	3-15/16" Bolt Spacing	4-13/16"	1-1/4"	



FS205KML

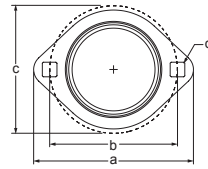
4 Bolt Flange, Housing Only

SKU #	Inner Diameter	Length	Overall Length	Height	List Price
FS204KML	47 mm	2-1/2" Bolt Spacing	3-25/64"	1-33/64"	
FS205KML	52 mm	2-3/4" Bolt Spacing	3-43/61"	1-13/16"	
FS206KML	62 mm	3-1/4" Bolt Spacing	4-11/64"	1-31/32"	
FS207KML	72 mm	3-5/8" Bolt Spacing	4-9/16"	2-7/64"	
FS208KML	80 mm	4" Bolt Spacing	5-5/64"	2-21/64"	
FS209KML	85 mm	4-1/8" Bolt Spacing	5-5/16"	2-21/64"	
FS210KML	90 mm	4-3/8" Bolt Spacing	5-5/8"	2-19/32"	
FS211KML	100 mm	5-1/8" Bolt Spacing	6-3/8"	2-15/16"	

Pressed Steel Bearing Flanges

- › Pressed Steel Bearing Flangette
- › Primarily Used On Implements
- › Zinc Plated

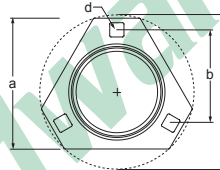
2 Bolt Flange



52MST

SKU #	Inner Diameter	Length	Overall Length	Width	List Price
40MST	40mm	2-1/2" Bolt Spacing	3-3/16"	2-5/16"	
47MST	47mm	2-13/16" Bolt Spacing	3-9/16"	2-5/8"	
52MST	52mm	3" Bolt Spacing	3-3/4"	2-51/64"	
62MST	62mm	3-9/16" Bolt Spacing	4-7/16"	3-5/16"	
72MST	72mm	3-15/16" Bolt Spacing	4-15/16"	3-11/16"	

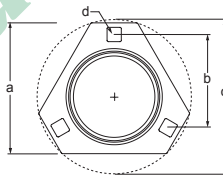
3 Bolt, Triangular Flange



52MS

SKU #	Inner Diameter	Length	Overall Length	List Price
40MS	40mm	2-1/4" Bolt Spacing	2-1/2"	
47MS	47mm	2-1/2" Bolt Spacing	2-13/16"	
52MS	52mm	2-5/8" Bolt Spacing	3"	
62MS	62mm	3-1/8" Bolt Spacing	3-9/16"	
62MSR	62mm	3-1/8" Bolt Spacing	3-9/16"	
72MS	72mm	3-3/8" Bolt Spacing	3-15/16"	

3 Bolt, Round Flange



52MM3GPZP



52MM3GZP

SKU #	Inner Diameter	Outer Diameter	Length	Features	List Price
47MM3GPZP	47mm	2-5/8"	3-9/16" Bolt Spacing	Grease Ring	
47MM3GZP	47mm	2-5/8"	3-9/16" Bolt Spacing	Grease Zerk	
52MM3GPZP	52mm	3-3/4"	3-3/4" Bolt Spacing	Grease Ring	
52MM3GZP	52mm	3-3/4"	3-3/4" Bolt Spacing	Grease Zerk	
62MM3GPZP	62mm	4-7/16"	3-1/8" Bolt Spacing	Grease Ring	
62MM3GZP	62mm	4-7/16"	3-1/8" Bolt Spacing	Grease Zerk	
72MM3GPZP	72mm	4-13/16"	3-3/8" Bolt Spacing	Grease Ring	
72MM3GZP	72mm	4-13/16"	3-3/8" Bolt Spacing	Grease Zerk	
100MS	100mm	6-9/16"	3-7/8" Bolt Spacing		

Bearings & Bushings

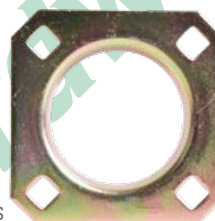
Pressed Steel Bearing Flanges



90MS

4 Bolt, Round Flange

SKU #	Inner Diameter	Outer Diameter	Length	Features	List Price
72MS4	72mm	4-7/8"	2-3/4" Bolt Spacing		
90MS	90mm	6-9/16"	3-7/8" Bolt Spacing		
90MSR	90mm	6-9/16"	3-7/8" Bolt Spacing	Grease Ring	
90MSZ	90mm	6-9/16"	3-7/8" Bolt Spacing	Grease Zerk	
100MSR	100mm	6-9/16"	3-7/8" Bolt Spacing	Grease Ring	
100MSZ	100mm	6-9/16"	3-7/8" Bolt Spacing	Grease Zerk	



80MS



80MSZ

4 Bolt, Square Flange

SKU #	Inner Diameter	Length	Overall Length	Features	List Price
80MS	80mm	3-5/16" Bolt Spacing	4-3/4"		
80MSR	80mm	3-5/16" Bolt Spacing	4-3/4"	Grease Ring	
80MSZ	80mm	3-5/16" Bolt Spacing	4-3/4"	Grease Zerk	
85MS	85mm	3-3/8" Bolt Spacing	4-3/4"		
85MSR	85mm	3-3/8" Bolt Spacing	4-3/4"	Grease Ring	
85MSZ	85mm	3-3/8" Bolt Spacing	4-3/4"	Grease Zerk	

Pillow Block Flange



PP205STKML

SKU #	Inner Diameter	Length	Overall Length	List Price
PP203STKML	40mm	2-11/16" Bolt Spacing	3-5/8"	
PP204STKML	47mm	3" Bolt Spacing	4-1/8"	
PP205STKML	52mm	3-3/8" Bolt Spacing	4-1/2"	
PP206STKML	62mm	3-3/4" Bolt Spacing	4-7/8"	

Standard Bore Radial Bearings



16352RSKML

1600 Series

SKU #	Inner Diameter	Outer Diameter	Width	Style	Features	List Price
16022RSKML	1/4"	11/16"	5/16"	Sealed		
1607ZZKML	7/16"	29/32"	5/16"	Shielded		
16142RSKML	3/8"	1-1/8"	3/8"	Sealed		
16152RSKML	7/16"	1-1/8"	3/8"	Sealed		
16162RSKML	1/2"	1-1/8"	3/8"	Sealed		
16202RSKML	7/16"	1-3/8"	7/16"	Sealed		
16212RSKML	1/2"	1-3/8"	7/16"	Sealed		
16232RSKML	5/8"	1-3/8"	7/16"	Sealed		
16282RSKML	5/8"	1-5/8"	1/2"	Sealed		
16332RSKML	5/8"	1-3/4"	1/2"	Sealed		
16302RSKML	3/4"	1-5/8"	1/2"	Sealed		
16352RSKML	3/4"	1-3/4"	1/2"	Sealed		
16352RSNR	3/4"	1-3/4"	1/2"	Sealed	Snap Ring	
16382RSKML	3/4"	2"	9/16"	Sealed		
16402RSKML	7/8"	2"	9/16"	Sealed		
16412RSKML	1"	2"	9/16"	Sealed		
16522RSKML	1-1/8"	2-1/2"	5/8"	Sealed		
16542RSKML	1-1/4"	2-1/2"	5/8"	Sealed		
16582RSKML	1-5/16"	2-9/16"	11/16"	Sealed		



R162RSKML

R Series

SKU #	Inner Diameter	Outer Diameter	Width	Style	List Price
R22RSKML	1/8"	3/8"	5/32"	Sealed	
R42RSKML	1/4"	5/8"	0.1961"	Sealed	
R4AZZKML	1/4"	3/4"	9/32"	Shielded	
R6XX	3/8"	7/8"	7/32"	Open Bearing	
R62RSKML	3/8"	7/8"	9/32"	Sealed	
R6ZZKML	3/8"	7/8"	9/32"	Shielded	
R8XX	1/2"	1-1/8"	1/4"	Open Bearing	
R82RSKML	1/2"	1-1/8"	5/16"	Sealed	
R10	5/8"	1-3/8"	9/32"	Open Bearing	
R102RSKML	5/8"	1-3/8"	11/32"	Sealed	
R10ZZKML	5/8"	1-3/8"	11/32"	Shielded	

continued on next page...

For current prices and product availability, visit: <https://paulbhardware.com/catalog-tool>

Bearings & Bushings

Standard Bore Radial Bearings

...continued from previous page

SKU #	Inner Diameter	Outer Diameter	Width	Style	List Price
R12	3/4"	1-5/8"	5/16"	Open Bearing	
R122RSKML	3/4"	1-5/8"	7/16"	Sealed	
R12ZZKML	3/4"	1-5/8"	7/16"	Shielded	
R14	7/8"	1-7/8"	3/8"	Open Bearing	
R142RSKML	7/8"	1-7/8"	1/2"	Sealed	
R16	1"	2"	3/8"	Open Bearing	
R162RSKML	1"	2"	1/2"	Sealed	
R182RSKML	1-1/8"	2-1/8"	1/2"	Sealed	
R202RSKML	1-1/4"	2-1/4"	1/2"	Sealed	
R222RSKML	1-3/8"	2-1/2"	9/16"	Sealed	
R242RSKML	1-1/2"	2-5/8"	9/16"	Sealed	

TIMKEN

R Series



R10TK

SKU #	Inner Diameter	Outer Diameter	Width	Style	List Price
R6TK	3/8"	7/8"	7/32"	Open Bearing	
R8TK	1/2"	1-1/8"	1/4"	Open Bearing	
R10TK	5/8"	1-3/8"	9/32"	Open Bearing	
R14TK	7/8"	1-7/8"	3/8"	Open Bearing	



Specialty Bearing



499502HKML



Z9504RSTKML

SKU #	Inner Diameter	Outer Diameter	Width	Style	Features	List Price
62012RS12KML	1/2"	32 mm	10 mm	Sealed		
62022RS58KML	5/8"	35 mm	11 mm	Sealed		
62032RS12	1/2"	40 mm	12 mm	Sealed		
62032RS58KML	5/8"	40 mm	12 mm	Sealed		
62032RS34KML	3/4"	40 mm	12 mm	Sealed		
62042RS34KML	3/4"	47 mm	14 mm	Sealed		
62052RS1KML	1"	52 mm	15 mm	Sealed		
499502HKML	5/8"	1-3/8"	7/16"	Sealed	Snap Ring	
99502HKML	5/8"	1-3/8"	7/16"	Sealed		
Z9504RSTKML	3/4"	1.7805"	0.61"	Sealed		



600 Series

SKU #	Inner Diameter	Outer Diameter	Width	Style	List Price
6072RSKML	7mm	19mm	6mm	Sealed	
6082RSKML	8mm	22mm	7mm	Sealed	
608ZZKML	8mm	22mm	7mm	Shielded	
609ZZKML	9mm	24mm	7mm	Shielded	
6252RSKML	5mm	16mm	5mm	Sealed	
6262RSKML	6mm	19mm	6mm	Sealed	
626ZZKML	7mm	22mm	7mm	Shielded	
6272RSKML	7mm	22mm	7mm	Sealed	
6282RSKML	8mm	24mm	8mm	Sealed	
6292RSKML	9mm	26mm	8mm	Sealed	
6882RSKML	8mm	16mm	5mm	Sealed	
688ZZKML	8mm	16mm	5mm	Shielded	



6000 Series

60052RSKML



SKU #	Inner Diameter	Outer Diameter	Width	Style	List Price
60002RSKML	10mm	26mm	8mm	Sealed	
60012RSKML	12mm	28mm	8mm	Sealed	
60022RSKML	15mm	32mm	9mm	Sealed	
60032RSKML	17mm	35mm	10mm	Sealed	
60042RSKML	20mm	42mm	12mm	Sealed	
60052RSKML	25mm	47mm	12mm	Sealed	
60062RSKML	30mm	55mm	13mm	Sealed	
60072RSKML	35mm	62mm	14mm	Sealed	
60082RSKML	40mm	68mm	15mm	Sealed	
60092RSKML	45mm	75mm	16mm	Sealed	
60102RSKML	50mm	80mm	16mm	Sealed	
60112RSKML	55mm	90mm	18mm	Sealed	
60122RSKML	60mm	95mm	18mm	Sealed	
60142RSKML	70mm	110mm	20mm	Sealed	

Bearings & Bushings

Metric Bore Radial Bearings



6000 Series

SKU #	Inner Diameter	Outer Diameter	Width	Style	List Price
60002RSSKF	10mm	26mm	8mm	Sealed	
60012RSSKF	12mm	28mm	8mm	Sealed	
60022RSSKF	15mm	32mm	9mm	Sealed	
60032RSSKF	17mm	35mm	10mm	Sealed	
60042RSSKF	20mm	42mm	12mm	Sealed	
60052RSSKF	25mm	47mm	12mm	Sealed	
60062RSSKF	30mm	55mm	13mm	Sealed	
60072RSSKF	35mm	62mm	14mm	Sealed	



6200 Series

SKU #	Inner Diameter	Outer Diameter	Width	Style	Features	List Price
6200ZZKML	10mm	30mm	9mm	Shielded		
6201ZZKML	12mm	32mm	10mm	Shielded		
6202ZZKML	15mm	35mm	11mm	Shielded		
6203ZZKML	17mm	40mm	12mm	Shielded		
6204ZZKML	20mm	47mm	14mm	Shielded		
6205ZZKML	25mm	52mm	15mm	Shielded		
6206ZZKML	30mm	62mm	16mm	Shielded		
62002RSKML	10mm	30mm	9mm	Sealed		
62012RSKML	12mm	32mm	10mm	Sealed		
62022RSKML	15mm	35mm	11mm	Sealed		
62032RSKML	17mm	40mm	12mm	Sealed		
62042RSKML	20mm	47mm	14mm	Sealed		
62052RSKML	25mm	52mm	15mm	Sealed		
62052RSNRKML	25mm	52mm	15mm	Sealed	Snap Ring	
62062RSKML	30mm	62mm	16mm	Sealed		
62072RSKML	35mm	72mm	17mm	Sealed		
62082RSKML	40mm	80mm	18mm	Sealed		
62092RSKML	45mm	85mm	19mm	Sealed		
62102RSKML	50mm	90mm	20mm	Sealed		
62112RSKML	55mm	100mm	21mm	Sealed		
62022RS12KML	12 mm	35 mm	11 mm	Sealed		
62132RSKML	65mm	120mm	23mm	Sealed		
62022RS16KML	16mm	35mm	11mm	Sealed		



62052RSNRKML



62052RSKML

Bearings & Bushings

Metric Bore Radial Bearings



62052RSSKF

6200 Series

SKU #	Inner Diameter	Outer Diameter	Width	Style	List Price
62002RSSKF	10mm	30mm	9mm	Sealed	
62012RSSKF	12mm	32mm	10mm	Sealed	
62022RSSKF	15mm	35mm	11mm	Sealed	
62032RSSKF	17mm	40mm	12mm	Sealed	
62042RSSKF	20mm	47mm	14mm	Sealed	
62052RSSKF	25mm	52mm	15mm	Sealed	
62062RSSKF	30mm	62mm	16mm	Sealed	
62072RSSKF	35mm	72mm	17mm	Sealed	
62082RSSKF	40mm	80mm	18mm	Sealed	
62092RSSKF	45mm	85mm	19mm	Sealed	
62102RSSKF	50mm	90mm	20mm	Sealed	
62112RSSKF	55mm	100mm	21mm	Sealed	
62122RSSKF	60mm	110mm	22mm	Sealed	



63052RSKML

6300 Series

SKU #	Inner Diameter	Outer Diameter	Width	Style	List Price
63002RSKML	10mm	35mm	11mm	Sealed	
63012RSKML	12mm	37mm	12mm	Sealed	
63022RSKML	15mm	42mm	13mm	Sealed	
63032RSKML	17mm	47mm	14mm	Sealed	
63042RSKML	20mm	52mm	15mm	Sealed	
63052RSKML	25mm	62mm	17mm	Sealed	
63062RSKML	30mm	72mm	19mm	Sealed	
63072RSKML	35mm	80mm	21mm	Sealed	
63082RSKML	40mm	90mm	23mm	Sealed	
63092RSKML	45mm	100mm	25mm	Sealed	
63112RSKML	55mm	120mm	29mm	Sealed	

Bearings & Bushings

Metric Bore Radial Bearings



6300 Series

63052RSSKF



SKU #	Inner Diameter	Outer Diameter	Width	Style	List Price
63012RSSKF	12mm	37mm	12mm	Sealed	
63022RSSKF	15mm	42mm	13mm	Sealed	
63032RSSKF	17mm	47mm	14mm	Sealed	
63042RSSKF	20mm	52mm	15mm	Sealed	
63052RSSKF	25mm	62mm	17mm	Sealed	
63062RSSKF	30mm	72mm	19mm	Sealed	
63072RSSKF	35mm	80mm	21mm	Sealed	
63082RSSKF	40mm	90mm	23mm	Sealed	
63092RSSKF	45mm	100mm	25mm	Sealed	
63102RSSKF	50mm	110mm	27mm	Sealed	
63112RSSKF	55mm	120mm	29mm	Sealed	



5200 Series

52052RSKML



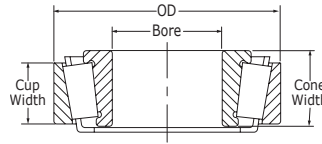
5209ZZKML



SKU #	Inner Diameter	Outer Diameter	Width	Style	Features	List Price
52002RSKML	10mm	30mm	14.3mm	Sealed	Double Row	
52012RSKML	12mm	32mm	15.9mm	Sealed	Double Row	
52022RSKML	15mm	35mm	15.9mm	Sealed	Double Row	
52032RSKML	17mm	40mm	17.5mm	Sealed	Double Row	
52042RSKML	20mm	47mm	20.6mm	Sealed	Double Row	
52052RSKML	25mm	52mm	20.6mm	Sealed	Double Row	
52062RSKML	30mm	62mm	23.8mm	Sealed	Double Row	
52072RSKML	35mm	72mm	27mm	Sealed	Double Row	
5209ZZKML	45mm	85mm	30.2mm	Shielded	Double Row	

Tapered Roller Bearings & Races

TIMKEN



LM67048TK

Tapered Bearing Cone

SKU #	Inner Diameter	Width	Fits	List Price
07097TK	.984"	.561"	07204TK	
09067TK	.750"	.750"	09195TK	
09074TK	.750"	.848"	09195TK	
09081TK	.812"	.848"	09195TK	
13685TK	1.50"	.750"	13620TK / 13621TK	
13686TK	1.50"	1.03"	13620TK / 13621TK	
14120TK	1.19"	.906"	14274TK / 14276TK	
14125ATK	1.25"	.771"	14274TK / 14276TK	
14130TK	1.313"	.771"	14274TK / 14276TK	
14136ATK	1.375"	1.052"	14274TK / 14276TK	
14137ATK	1.375"	.771"	14274TK / 14276TK	
14138ATK	1.375"	.771"	14274TK / 14276TK	
15100TK	1"	.813"	15245TK / 15250TK / 15250XTK	
15101TK	1"	.813"	15245TK / 15250TK / 15250XTK	
15116TK	1.19"	.813"	15245TK / 15250TK / 15250XTK	
15119TK	1.19"	.813"	15245TK / 15250TK / 15250XTK	
15120TK	1.19"	.813"	15245TK / 15250TK / 15250XTK	
15123TK	1.25"	.750"	15245TK / 15250TK / 15250XTK	
15126TK	1.25"	.813"	15245TK / 15250TK / 15250XTK	
25580TK	1.75"	1.00"	25520TK / 25521TK	
25581TK	1.75"	1.00"	25520TK / 25521TK	
25590TK	1.796"	1.00"	25520TK / 25521TK	
25877TK	1.375"	.969"	25821TK	
342ATK	1.625"	1.180"	332TK	
342TK	1.625"	.882"	332TK	
3780TK	2"	1.193"	3720TK	
387ATK	2.250"	.864"	382TK / 382ATK	
387TK	2.250"	.864"	382TK / 382ATK	
390TK	2.250"	.866"	394ATK	
JL69349TK	1.496"	.669"	JL69310TK	
JLM104948TK	1.969"	.847"	JLM104910TK	
JLM506849TK	2.165"	.906"	JLM506810TK	
L44600LTK	1"	.580"	L44610TK	
L44643TK	1"	.580"	L44610TK	
L44649TK	1.063"	.580"	L44610TK	
L68149TK	1.378"	.660"	L68110TK / L68111TK	
LM102949TK	1.781"	.780"	LM102910TK	
LM104949TK	2"	.875"	LM104912TK	
LM11949TK	.750"	.655"	LM11910TK	
LM12749TK	.866"	.655"	LM12710TK	
LM29748TK	1.50"	.720"	LM29710TK	
LM29749TK	1.50"	.720"	LM12710TK	

continued on next page...

For current prices and product availability, visit: <https://paulbhardware.com/catalog-tool>

Bearings & Bushings

Tapered Roller Bearings & Races

...continued from previous page

SKU #	Inner Diameter	Width	Fits	List Price
LM48548TK	1.375"	.720"	LM48510TK	
LM501349TK	1.625"	.780"	LM501310TK	
LM603049TK	1.781"	.781"	LM603011TK	
LM67048TK	1.25"	.660"	LM67010TK	
LM67049ATK	1.25"	.660"	LM67010TK	
M12649TK	.844"	.720"	M12610TK	

TIMKEN



L44610TK

Tapered Bearing Cup

SKU #	Outer Diameter	Width	List Price	SKU #	Outer Diameter	Width	List Price
07204TK	2.047"	.500"		JL69310TK	2.480"	.532"	
09195TK	1.938"	.688"		JLM104910TK	3.228"	.669"	
13620TK	2.717"	.594"		JLM506810TK	3.543"	.728"	
13621TK	2.717"	.594"		L44610TK	1.980"	.420"	
14274TK	2.717"	.625"		L68110TK	2.328"	.470"	
14276TK	2.717"	.625"		L68111TK	2.361"	.470"	
15245TK	2.441"	.0563"		LM102910TK	2.891"	.620"	
15250TK	2.500"	.625"		LM104912TK	3.265"	.650"	
15250XTK	2.500"	.625"		LM11710TK	1.570"	.420"	
25520TK	3.265"	.750"		LM11910TK	1.781"	.475"	
25521TK	3.270"	.750"		LM12710TK	1.781"	.475"	
25821TK	2.875"	.750"		LM29710TK	2.563"	.550"	
28921TK	3.937"	.781"		LM48510TK	2.563"	.550"	
332TK	3.150"	.702"		LM501310TK	2.891"	.580"	
3720TK	3.672"	.938"		LM603011TK	3.063"	.594"	
382ATK	3.813"	.625"		LM67010TK	2.328"	.465"	
382TK	3.875"	.702"		M12610TK	1.969"	.550"	
394ATK	4.331"	.741"					

Tapered Roller Bearings & Races



KML006

Tapered Bearing Cone & Cup Set

SKU #	Inner Diameter	Outer Diameter	Width	Includes	List Price
KML001	.688"	1.570"	.545"	LM11749/LM11710	
KML002	.750"	1.781"	.610"	LM11949/LM11910	
KML004	1.063"	1.980"	.560"	L44649/L44610	
KML005	1.357"	2.563"	1.50"	LM48548/LM48510	
KML006	1.25"	2.328"	.625"	LM67048/LM67010	
KML008	1.142"	1.980"	.560"	L45449/L45410	
KML011	1.496"	2.480"	.669"	JL69349/JL69310	
KML012	.866"	1.781"	.655"	LM12749/LM12710	
KML013	1.378"	2.328"	.625"	L68149/L68110	
KML014	1"	1.980"	.560"	L44643/L44610	
KML016	.866"	1.810"	.610"	LM12749/LM12711	
KML017	1.378"	2.361"	.625"	L68149/L68111	
KML036	1.781"	3.063"	.781"	LM603049/LM603012	
KML037	1.781"	3.063"	.844"	LM603049/LM603011	
KML038	2"	3.250"	.831"	LM104949/LM104911	
KML045	1.625"	2.891"	.770"	LM501349/LM501310	
KML046	1.26"	2.087"	.571"	JL26749/JL26710	
KML047	1.781"	2.891"	.770"	LM102949/LM102910	
KML052	1.75"	3.265"	.938"	25580/25520	
KML053	1.75"	3.265"	1.063"	25580/25523	
KML054	1.796"	3.265"	1.063"	25590/25520	
KML056	1.50"	2.563"	.710"	LM29748/LM29710	
KML061	.625"	1.688"	.563"	11590/11520	
KML063	1.313"	2.688"	.7875"	M88048/M88010	
KML069	1.625"	2.891"	.844"	LM501349/LM501314	
KML070	1.50"	2.563"	.710"	LM29749/LM29710	
KML082	2"	3.228"	.847"	LM104949/JLM104910	
KML401	3.25"	5.512"	1.438"	580/572	
KML403	3.75"	6"	1.563"	594A/592A	
KML406	1.75"	3.672"	1.188"	3782/3720	
KML407	2.25"	3.844"	.969"	28682/28622	
KML408	2.625"	4.438"	1.188"	39590/39520	
KML411	3.25"	5.250"	1.313"	47686/47620	
KML413	2.625"	4.813"	1.50"	HM212049/HM212011	
KML415	3.50"	6"	1.563"	HM518445/HM518410	

Bearings & Bushings

Tapered Roller Bearings & Races



30208KML

Metric Tapered Bearing Cone & Cup Set

SKU #	Inner Diameter	Outer Diameter	Width	List Price
30204KML	20mm	47mm	15.25mm	
30205KML	25mm	52mm	16.25mm	
30206KML	30mm	62mm	17.25mm	
30207KML	35mm	72mm	18.25mm	
30208KML	40mm	80mm	19.75mm	
30210KML	50mm	90mm	21.75mm	
30212KML	60mm	110mm	22.75mm	



K3500KML

Bearing Rebuild Kit For Trailers

SKU #	Includes	Fits	List Price
K1000KML	2 Sets - L44643/L44610, Seal, Cotter Pin, & Grease	1" Axles	
K1063KML	2 Sets - L44649/L44610, Seal, Cotter Pin, & Grease	1-1/16" Axles	
K3500KML	1 Set - L68149/L68111, 1 Set - L44649/L44610, Seal, Cotter Pin, & Grease	3500 lb Axles	

Bearings & Bushings

Flanged Wheel Bearings

- › Flanged Wheel Bearing
- › Pressed Steel Construction
- › For Use In Wagons, Wheelbarrows & Carts



MWPFB58

SKU #	Inner Diameter	Outer Diameter	Features	List Price	SKU #	Inner Diameter	Outer Diameter	Features	List Price
MWTBB38	3/8"	1-1/8"	Standard Duty		MWIBB34	3/4"	1-3/8"	Standard Duty	
MWTBB12	1/2"	1-1/8"	Standard Duty		MWPFB12	1/2"	1-3/8"	Medium Duty	
MWIBB12	1/2"	1-3/8"	Standard Duty		MWPFB58	5/8"	1-3/8"	Medium Duty	
MWIBB58	5/8"	1-3/8"	Standard Duty		MWPFB34	3/4"	1-3/8"	Medium Duty	

- › Flanged Wheel Bearing
- › Pressed Steel Construction



SF12X32

SKU #	Inner Diameter	Outer Diameter	List Price	SKU #	Inner Diameter	Outer Diameter	List Price
SF12X32	3/4"	2"		SF16X32	1"	2"	

- › Flanged Wheel Bushing
- › Oil-Permeated Steel
- › Great For Wet, Dusty Or Dirty Applications



MWTB58

SKU #	Inner Diameter	Outer Diameter	Features	List Price	SKU #	Inner Diameter	Outer Diameter	Features	List Price
MWTB58	5/8"	1-1/8"	Steel		MWIB78	7/8"	1-3/8"	Steel	
MWIB58	5/8"	1-3/8"	Steel		MWRT114	1"	1-3/8"	Steel	
MWIB34	3/4"	1-3/8"	Steel		MWIB1L	1"	1-3/8"	Steel, Long	
MWIB34L	3/4"	1-3/8"	Steel, Long						

Bearings & Bushings

Needle, Cam & Specialty Bearings

Needle Bearing



BH1616

SKU #	Inner Diameter	Outer Diameter	Length	List Price	SKU #	Inner Diameter	Outer Diameter	Length	List Price
B088	1/2"	11/16"	1/2"		BH1616	1"	1-5/16"	1"	
B812	1/2"	11/16"	3/4"		BH1624	1"	1-5/16"	1-1/2"	
B1012	5/8"	13/16"	3/4"		B1816	1-1/4"	1-3/8"	1"	
B1112	11/16"	7/8"	3/4"		B2016	1-1/4"	1-1/2"	1"	
B1212	3/4"	1"	3/4"		B2020	1-1/4"	1-1/2"	1-1/4"	
B1412	7/8"	1-1/8"	3/4"		BH2212	1-3/8"	1-3/4"	3/4"	
B168	1"	1-1/4"	1/2"		HK2020	20mm	26mm	20mm	
B1612	1"	1-1/4"	3/4"		HK3516	35mm	42mm	16mm	
B1616	1"	1-1/4"	1"		HK5020	50mm	58mm	20mm	
BH1612	1"	1-5/16"	3/4"						

Cam Follower Bearing



CR12

SKU #	Outer Diameter	Width	Length	List Price	SKU #	Outer Diameter	Width	Length	List Price
CR12	3/4"	1/2"	7/8" Stud Length		CR18	1-1/8"	5/8"	1" Stud Length	
CR14	7/8"	1/2"	7/8" Stud Length		CR22	1-3/8"	3/4"	1-1/4" Stud Length	
CR16	1"	5/8"	1" Stud Length		CR24	1-1/2"	7/8"	1-1/2" Stud Length	
CRSB16	1"	5/8"	1" Stud Length						

Rod End Bearings

- > Rod End Bearing
- > High Carbon, Hardened Chrome Plated Ball
- > Used For General Purpose Linkage

Female Thread



CF8

SKU #	Inner Diameter	Thread	Width	Length	Thickness	List Price
CF3	3/16"	10/32	5/8"	1-1/16"	5/16"	
CF4	1/4"	1/4"-28	3/4"	1-5/16"	3/8"	
CF5	5/16"	5/16"-24	7/8"	2-1/2"	7/16"	
CF6	3/8"	3/8"-24	1"	1-5/8"	1/2"	
CF7	7/16"	7/16"-20	1-1/8"	1-13/16"	9/16"	
CF8	1/2"	1/2"-20	1-5/16"	2-1/8"	5/8"	
CF10	5/8"	5/8"-18	1-1/2"	2-1/2"	3/4"	
CF120	3/4"	3/4"-16	1-3/4"	2-7/8"	7/8"	

Female Thread - Left Hand

SKU #	Inner Diameter	Thread	Width	Length	Thickness	List Price
CFL3	3/16"	10/32	5/8"	1-1/16"	5/16"	
CFL4	1/4"	1/4"-28	3/4"	1-5/16"	3/8"	
CFL5	5/16"	5/16"-24	7/8"	1-3/8"	7/16"	
CFL6	3/8"	3/8"-24	1"	1-5/8"	1/2"	
CFL8	1/2"	1/2"-20	1-5/16"	2-1/8"	5/8"	



CF8Y

Female Thread - Male Stud

SKU #	Inner Diameter	Thread	Width	Length	Thickness	List Price
CF3Y	3/16"	10/32	5/8"	1-1/16"		
CF4Y	1/4"	1/4"-28	3/4"	1-5/16"		
CF5Y	5/16"	5/16"-24	7/8"	1-3/8"		
CF6Y	3/8"	3/8"-24	1"	1-5/8"		
CF7Y	7/16"	7/16"-20	1-1/8"	1-13/16"		
CF8Y	1/2"	1/2"-20	1-5/16"	2-1/8"		



CM80

Male Thread

SKU #	Inner Diameter	Thread	Width	Length	Thickness	List Price
CM3	3/16"	10/32	5/8"	1-1/16"	5/16"	
CM4	1/4"	1/4"-28	3/4"	1-5/16"	3/8"	
CM5	5/16"	5/16"-24	7/8"	1-3/8"	7/16"	
CM6	3/8"	3/8"-24	1"	1-5/8"	1/2"	
CM7	7/16"	7/16"-20	1-1/8"	1-13/16"	9/16"	
CM80	1/2"	1/2"-20	1-5/16"	2-1/8"	5/8"	
CM100	5/8"	5/8"-18	1-1/2"	2-1/2"	3/4"	
CM120	3/4"	3/4"-16	1-3/4"	2-7/8"	7/8"	

Male Thread - Left Hand

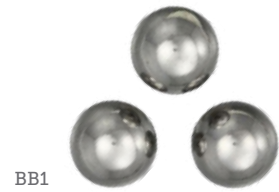
SKU #	Inner Diameter	Thread	Width	Length	Thickness	List Price
CML4	1/4"	1/4"-28	3/4"	1-5/16"	3/8"	
CML5	5/16"	5/16"-24	7/8"	1-3/8"	7/16"	
CML6	3/8"	3/8"-24	1"	1-5/8"	1/2"	
CML7	7/16"	7/16"-20	1-1/8"	1-13/16"	9/16"	
CML8	1/2"	1/2"-20	1-5/16"	2-1/8"	5/8"	
CML10	5/8"	5/8"-18	1-1/2"	2-1/2"	3/4"	

For current prices and product availability, visit: <https://paulbhardware.com/catalog-tool>

Bearings & Bushings

Chrome Steel Balls

- › Chrome Steel Ball Bearing
- › Through-Hardened, High Load Capacity
- › Used In Precision Ball Bearings



SKU #	Size	List Price	SKU #	Size	List Price	SKU #	Size	List Price
BB18	1/8"		BB1132	11/32"		BB34	3/4"	
BB532	5/32"		BB38	3/8"		BB1	1"	
BB316	3/16"		BB716	7/16"		BALL118	1-1/8"	
BB732	7/32"		BB12	1/2"		BALL114	1-1/4"	
BB14	1/4"		BB916	9/16"		BB78	7/8"	
BB516	5/16"		BB58	5/8"				

Ball Joints



SKU #	Inner Diameter	Outer Diameter	Width	List Price	SKU #	Inner Diameter	Outer Diameter	Width	List Price
5982	1/2"	2"	1"		5827	7/8"	2-1/2"	1-3/8"	
5870	5/8"	2"	1"		7466	1"	2"	1"	
5868	3/4"	2"	1"		5526	1"	2-3/4"	1-3/4"	
5500	3/4"	2"	1-3/4"		5836	1-1/8"	3-1/8"	1-3/4"	
5347	3/4"	2-1/4"	1-3/8"						

Bronze Bushings

- › Bronze Bushing
- › Oil Permeated, Self-Lubricating
- › Primarily Used As Low Speed Bearing



SKU #	Inner Diameter	Outer Diameter	Length	List Price	SKU #	Inner Diameter	Outer Diameter	Length	List Price
B244	1/8"	1/4"	1/2"		B468	1/4"	3/8"	1"	
B346	3/16"	1/4"	3/4"		B478	1/4"	7/16"	1"	
B356	3/16"	5/16"	3/4"		B486	1/4"	1/2"	3/4"	
B456	1/4"	5/16"	3/4"		B488	1/4"	1/2"	1"	

continued on next page...

For current prices and product availability, visit: <https://paulhardware.com/catalog-tool>

Bearings & Bushings

Bronze Bushings

...continued from previous page

SKU #	Inner Diameter	Outer Diameter	Length	List Price	SKU #	Inner Diameter	Outer Diameter	Length	List Price
B4810	1/4"	1/2"	1-1/4"		B121616	3/4"	1"	2"	
B0568	5/16"	3/8"	1"		B121620	3/4"	1"	2-1/2"	
B0578	5/16"	7/16"	1"		B121812	3/4"	1-1/8"	1-1/2"	
B588	5/16"	1/2"	1"		B121816	3/4"	1-1/8"	2"	
B684	3/8"	1/2"	1/2"		B131616	13/16"	1"	2"	
B6810	3/8"	1/2"	1-1/4"		B14167	7/8"	1"	7/8"	
B6910	3/8"	9/16"	1-1/4"		B14168	7/8"	1"	1"	
B61010	3/8"	5/8"	1-1/4"		B141612	7/8"	1"	1-1/2"	
B7910	7/16"	9/16"	1-1/4"		B141716	7/8"	1-1/16"	2"	
B71010	7/16"	5/8"	1-1/4"		B141816	7/8"	1-1/8"	2"	
B71112	7/16"	11/16"	1-1/2"		B141820	7/8"	1-1/8"	2-1/2"	
B8106	1/2"	5/8"	3/4"		B14206	7/8"	1-1/4"	3/4"	
B8108	1/2"	5/8"	1"		B142016	7/8"	1-1/4"	2"	
B81012	1/2"	5/8"	1-1/2"		B151916	15/16"	1-3/16"	2"	
B81112	1/2"	11/16"	1-1/2"		B152016	15/16"	1-1/4"	2"	
B8129	1/2"	3/4"	1-1/8"		B16186	1"	1-1/8"	3/4"	
B81212	1/2"	3/4"	1-1/2"		B16188	1"	1-1/8"	1"	
B81216	1/2"	3/4"	2"		B161816	1"	1-1/8"	2"	
B81312	1/2"	13/16"	1-1/2"		B16198	1"	1-3/16"	1"	
B81412	1/2"	7/8"	1-1/2"		B161916	1"	1-3/16"	2"	
B81612	1/2"	1"	1-1/2"		B16206	1"	1-1/4"	3/4"	
B9124	9/16"	3/4"	1/2"		B16208	1"	1-1/4"	1"	
B91212	9/16"	3/4"	1-1/2"		B162010	1"	1-1/4"	1-1/4"	
B91312	9/16"	13/16"	1-1/2"		B162012	1"	1-1/4"	1-1/2"	
B10128	5/8"	3/4"	1"		B162016	1"	1-1/4"	2"	
B101210	5/8"	3/4"	1-1/4"		B162018	1"	1-1/4"	2-1/4"	
B101212	5/8"	3/4"	1-1/2"		B162020	1"	1-1/4"	2-1/2"	
B10124	5/8"	3/4"	1/2"		B162024	1"	1-1/4"	3"	
B10136	5/8"	13/16"	3/4"		B162212	1"	1-3/8"	1-1/2"	
B101312	5/8"	13/16"	1-1/2"		B162220	1"	1-3/8"	2-1/2"	
B10146	5/8"	7/8"	3/4"		B162424	1"	1-1/2"	3"	
B101416	5/8"	7/8"	2"		B172120	1-1/16"	1-5/16"	2-1/2"	
B10168	5/8"	1"	1"		B182010	1-1/8"	1-1/4"	1-1/4"	
B101612	5/8"	1"	1-1/2"		B18208	1-1/8"	1-1/4"	1"	
B101616	5/8"	1"	2"		B182012	1-1/8"	1-1/4"	1-1/2"	
B111416	11/16"	7/8"	2"		B182112	1-1/8"	1-5/16"	1-1/2"	
B12146	3/4"	7/8"	3/4"		B182216	1-1/8"	1-3/8"	2"	
B12148	3/4"	7/8"	1"		B182224	1-1/8"	1-3/8"	3"	
B121410	3/4"	7/8"	1-1/4"		B182412	1-1/8"	1-1/2"	1-1/2"	
B121412	3/4"	7/8"	1-1/2"		B182416	1-1/8"	1-1/2"	2"	
B121516	3/4"	15/16"	2"		B192324	1-3/16"	1-7/16"	3"	
B12164	3/4"	1"	1/2"		B192424	1-3/16"	1-1/2"	3"	
B12166	3/4"	1"	3/4"		B20246	1-1/4"	1-1/2"	3/4"	
B12168	3/4"	1"	1"		B20248	1-1/4"	1-1/2"	1"	
B121610	3/4"	1"	1-1/4"		B202412	1-1/4"	1-1/2"	1-1/2"	
B121612	3/4"	1"	1-1/2"		B202416	1-1/4"	1-1/2"	2"	

continued on next page...

For current prices and product availability, visit: <https://paulbhardware.com/catalog-tool>

Bearings & Bushings

Bronze Bushings

...continued from previous page

SKU #	Inner Diameter	Outer Diameter	Length	List Price	SKU #	Inner Diameter	Outer Diameter	Length	List Price
B202424	1-1/4"	1-1/2"	3"		B263024	1-5/8"	1-7/8"	3"	
B202612	1-1/4"	1-5/8"	1-1/2"		B263216	1-5/8"	2"	2"	
B202614	1-1/4"	1-5/8"	1-3/4"		B283212	1-3/4"	2"	1-1/2"	
B202616	1-1/4"	1-5/8"	2"		B283216	1-3/4"	2"	2"	
B202824	1-1/4"	1-3/4"	3"		B283220	1-3/4"	2"	2-1/2"	
B222616	1-3/8"	1-5/8"	2"		B283224	1-3/4"	2"	3"	
B22268	1-3/8"	1-5/8"	1"		B283416	1-3/4"	2-1/8"	2"	
B222816	1-3/8"	1-3/4"	2"		B313420	1-15/16"	2-1/8"	2-1/2"	
B222824	1-3/8"	1-3/4"	3"		B323616	2"	2-1/4"	2"	
B232816	1-7/16"	1-3/4"	2"		B323624	2"	2-1/4"	3"	
B24288	1-1/2"	1-3/4"	1"		B323824	2"	2-3/8"	3"	
B242812	1-1/2"	1-3/4"	1-1/2"		B323828	2"	2-3/8"	3-1/2"	
B242816	1-1/2"	1-3/4"	2"		B324024	2"	2-1/2"	3"	
B242824	1-1/2"	1-3/4"	3"		B404420	2-1/2"	2-3/4"	2-1/2"	
B243016	1-1/2"	1-7/8"	2"		B404824	2-1/2"	3"	3"	
B243224	1-1/2"	2"	3"		B485620	3"	3-1/2"	2-1/2"	

- › Flanged Bronze Bushing
- › Oil Permeated, Self-Lubricating
- › Primarily Used As Low Speed Bearing



FB12168

SKU #	Inner Diameter	Outer Diameter	Length	Width	List Price
FB354	3/16"	5/16"	1/2"	1/16" Flange	
FB464	1/4"	3/8"	1/2"	3/64" Flange	
FB573	5/16"	7/16"	3/8"	3/32" Flange	
FB583	5/16"	1/2"	3/8"	3/32" Flange	
FB6104	3/8"	5/8"	1/2"	1/8" Flange	
FB684	3/8"	1/2"	1/2"	3/32" Flange	
FB8105	1/2"	5/8"	5/8"	1/8" Flange	
FB8125	1/2"	3/4"	5/8"	1/8" Flange	
FB8126	1/2"	3/4"	3/4"	1/8" Flange	
FB10126	5/8"	3/4"	3/4"	1/8" Flange	
FB10128	5/8"	3/4"	1"	1/8" Flange	
FB10138	5/8"	13/16"	1"	5/32" Flange	
FB12146	3/4"	7/8"	3/4"	5/32" Flange	
FB12164	3/4"	1"	1/2"	1/8" Flange	
FB12166	3/4"	1"	3/4"	5/32" Flange	
FB12168	3/4"	1"	1"	1/8" Flange	
FB1216820	3/4"	1"	1"	5/32" Flange	
FB16206	1"	1-1/4"	3/4"	3/16" Flange	
FB16208	1"	1-1/4"	1"	3/16" Flange	
FB162012	1"	1-1/4"	1-1/2"	3/16" Flange	
FB162016	1"	1-1/4"	2"	3/16" Flange	
FB18226	1-1/8"	1-3/8"	3/4"	3/16" Flange	
FB324019	2"	2-1/2"	2-3/8"	3/8" Flange	