



From the Bees to You!



Bee Well Honey Bee Supply

815 West Main Street Pickens SC 29671 (864) 898-5122



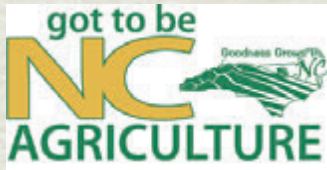
www.beewellhoneyfarm.com

The Bee Well Honey Story

SC Farmer of the Year 2016



Kerry Owen (Bee Well Honey) has been named SC Farmer of the Year for 2016 by Swisher Sweets/Sunbelt Expo Southeastern. Mr. Owen was introduced to honeybees as a child growing up in the Blue Ridge Mountains of North Carolina. He has transformed beekeeping from a family hobby into a thriving business. Along with many faithful employees and other beekeepers who share the same goals and passion for producing and supplying the highest quality products and services to their customers across the Southeast, Mr. Owen continues to give to the beekeeping community serving as a guest speaker at State Beekeeper meetings and many local associations.



Bee Well Honey & Bee Supply
815 West Main Street Pickens SC



Sign your group up for a one hour tour of Bee Well Honey. Visit our warehouse, bottling facility and beekeeping education center. Learn how honey is collected from the hives and prepared to be shipped to stores all across the southeast.

Registration is required.

Cost is \$5 per person

Tours Available



Tours

Mead Making Classes

Candle Making Classes

Beekeeping Classes



Package Bees & Bulk Honey

*Bee Well Honey has been providing quality bee packages to area beekeepers for many years.
Order early for best date selection.*

Package Bees

Packages consist of approximately 3 pounds of bees. They arrive in a screen & wood cage for easy handling. The 10,000 bees inside (along with the included mated queen) is the ideal number of bees to start a new colony. The package arrives with a can of sugar syrup inside for traveling purposes. All packages are pick up only at our Pickens Bee Supply location (815 West Main Street). We begin taking orders each fall - pickup days are in March, April & May. Call for current pricing of packages and extra queens. 864-898-5122



Nucs

A "Nuc" or Nucleus Colony is a half-size colony consisting of 5 deep frames of honey, pollen and brood, a mated queen and bees. Once you receive your nuc colony, you can move the bees into a permanent box to allow colony growth. Nucs are generally available later in the Spring than package bees. Nuc supplies are limited. Place your

Mated Queens - Time to Requeen ?

Each Spring Bee Well Honey provides young mated queens for new beekeepers & those who want to re-queen their hives. Keeping a young queen in your colony is beneficial for colony vigor.

Our Bottling & Distribution Center



Bulk & Wholesale Honey



Bee Well Honey offers raw honey by the jar, case, bucket & barrel.

Private labeling is also available.

Call our Bee Supply for more information and current prices.

864-898-5122

Bulk Beeswax Sold by The Pound - call for more info

**** All prices and availability are subject to change,
Bee Well Honey can not be responsible for typos or printing errors.**

Basic Hive Components

Wooden Ware - Unassembled

	10 Frame	8 Frame
Bottom Board (IPM) with screen	\$21.00	\$21.50
Bottom Board - solid wood	\$21.00	-----
Hive Body (Deep)	\$17.00	\$19.00
Medium Super	\$14.50	\$16.50
Shallow Super	\$12.00	\$16.00
Inner Cover	\$11.50	\$12.50
Telescoping Top (metal cover)	\$21.95	\$25.00



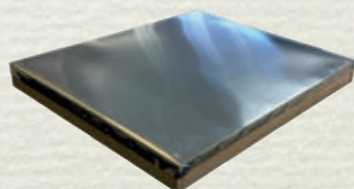
IPM Screened Bottom Board with grid for mite counts. Available in 8 frame & 10 frame.



Solid Bottom Board provides base & entrance. Available in 10 frame.



Hive Landing Board: Cedar accessory placed under bottom board to provide wider landing area for bees. \$18.00



A telescoping top protects the hive from rain & wind. Features a heavy duty galvanized top for years of use. Available in 8 frame & 10 frame.



Standard inner cover prevents burr comb attaching to outer cover. Provides ventilation. Available in 8 frame & 10 frame.



Supers available in shallow, medium & deep. Unassembled & Assembled. 8 frame & 10 frame.



Beginners Beekeeping Kit -
Bottom Board, Hive Body, Frames, Wax Foundation, Inner Cover, Telescoping top, Bee Brush, Smoker, Hat, Veil, Hive Tool, First Lessons in Beekeeping Book - \$186



Nuc Box : 5 frame unassembled (bottom, box, inner, top) \$45.00

Assembled Equipment

Lets face it, sometimes you are in a hurry and don't have time to assemble beekeeping equipment. We have your covered - in our bee supply retail store (Pickens SC) we carry a variety of products already assembled. Some are even painted and ready to go in the bee yard.



Assembled Supers w/ frames - no foundation - 10 frame

Shallow with frames	\$31.75
Medium with frames	\$32.50
Deep with frames	\$35.50
Assembled Deep with frames & plastic foundation	\$55.00

Painted Equipment \$5 higher when available

Frames & Foundation

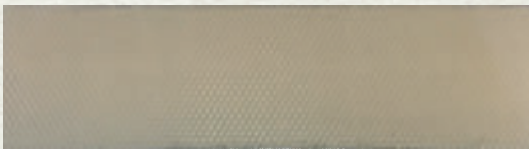
We provide unassembled wooden frames & wax foundation. Frames are available in 10 packs. Wax foundation is available in a variety of sizes to suit your needs.

Wooden Frames

Brood Frames (10 pk) unassembled	\$12.50
Medium Frames (10 pk) unassembled	\$12.50
Shallow Super Frames (10 pk) unassembled	\$12.50



We offer unassembled frames in 3 sizes to fit: shallows, mediums & deeps.
Need assembled frames? Check out our assembled products on the Basic Hive Components Page.



Cut Comb Wax Foundation

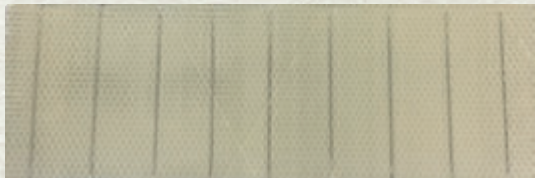
Fits Shallow Frame: 4 3/4" by 16 1/2"



Plastic Foundation

For the brood box (deep)

Plastic Foundation Yellow \$ 1.60



Wired Wax Foundation

Fits: Deep, Medium & Shallow Frames



Drone Foundation:

A plastic frame of drone sized comb to aid in varroa control.

This is part of an overall IPM strategy. \$ 3.45

What is drawn out foundation?

Worker bees use sheets of foundation as a guide on which they build up wax cells. The wax is produced by glands on their abdomen. Bees must consume a lot of honey to produce wax. (8 - 10 lbs of honey per 1 lb of wax). It is essential to feed bees well when they are drawing out foundation.



Wax foundation should be stored in a room temperature location. Hot temps will cause wax to melt/ cold temps will increase breakage.

Wax Foundation

For the brood box (deep)

Brood Foundation (10 pk)	\$ 16.00
Brood Foundation (50 pk)	\$ 80.00
Brood Foundation 12 1/2 #	\$120.00

Medium with wire (10 pk)	\$ 12.00
Medium with wire 12 1/2 #	\$120.00

Super (shallow) Foundation

cut comb no wire 1#	\$ 14.00
cut comb no wire 12 1/2 #	\$121.50

wax with wire (10 pk)	\$ 12.00
wax with wire (50 pk)	\$ 56.00
wax with wire 12 1/2 #	\$120.00



Form Board:

Great tool for installing wax foundation. \$10.50



Frame Cleaner

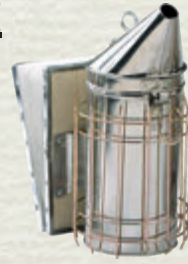
\$ 5.75



Beekeepers Tools & Accessories

Tools For All Stages of Beekeeping

Double Screen Board	\$ 20.00
Grid Board for mite counts	\$ 6.00
Entrance Guard with wire	\$ 6.50
Entrance Reducer - wooden (8 & 10)	\$ 1.00
Entrance Reducer/Mouse Guard Metal	\$ 2.95
Frame Fixers	\$.50
Frame Perch	\$ 15.00
Frame Spacer Tool - 9 frames	\$ 13.95
Hive Staples - 1 # box	\$ 8.25
Hive Stand Metal Rebar Model	\$ 23.00
Hive Tool - J hook	\$ 5.75
Hive Tool	\$ 5.50
Moving & Robbing Screen	\$ 18.50
Pollen Trap (plastic - front mount)	\$ 23.50
Propolis trap - plastic	\$ 9.00
Queen Catcher (butterfly style)	\$ 4.50
Queen Cage- Push in Plastic	\$ 6.00
Queen Excluder (metal) (8 & 10)	\$ 10.50
Queen Excluder (plastic)	\$ 4.50
Queen Marking Pen	\$ 8.50
Smoker Fuel	\$ 4.50
Spacers - metal (9 frame)pk of 10	\$ 7.95
Support pins - 100 pk	\$ 7.75



Smoker \$ 32.00



Mini Hive Tool \$ 4.95

Nails pack (½ lb)

3/4"	\$ 5.20
1 1/4"	\$ 3.85
1 1/2"(4D)	\$ 3.85
7 D	\$ 3.59



Frame Grips \$ 20.50

Feeders

Dadant Frame (Frame Feeder) fits deep	\$ 9.00
Entrance Feeder Cypress (use with jar)	\$ 4.95
Top Feeder Plastic	\$ 18.95
Pail Feeder White - one gallon	\$ 7.75
Pail Feeder Black Plug	\$ 6.75



Queen Marking Tube
\$ 6.75



Swarm Lure Singles
\$ 3.00 ea



Feeder Pail - 1 Gallon
\$ 7.75



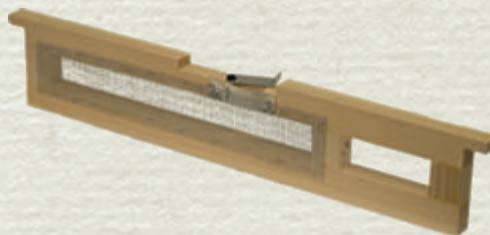
Black Plug Feeder
\$ 6.75



Entrance Feeder
\$ 4.95



Hang onto those swarms with the
Swarm Bandit \$30.00



Requeening frame
\$ 12.95

Sugar Water Ratios for Feeding Bees

1:1 Half sugar/Half Water
*encourages buildup & wax production

2:1

2 parts sugar: 1 part water
* promotes food storage

Protective Wear

Gloves, Helmets & Veils

Gloves - Goatskin S, M, L, XL	\$ 21.00
Gloves (leather) S, M, L or XL	\$ 24.95
Helmet Plastic - one size	\$ 13.00
Helmet Ventilated - one size	\$ 22.00
Veil - round use with helmet	\$ 15.95
Veil -square use with helmet	\$ 17.50
Veil - cowboy veil and hat	\$ 18.00



Jackets

Jacket Nylon Kelley Dome S - 4XL	\$ 130.00 - \$ 135.00
Cotton Jacket Dome Hood	\$ 79.00
Ventilated Jackets	\$ 110.00



Your bee suit should fit loosely !

Beekeeping Suits

Cotton Suit Dome Hood	\$ 79.00
Cotton Suit Hoop Veil	\$ 79.00
Suit K (Nylon)Dome S-4 XL	\$ 135.00 & up
Suit K Nylon Fold Veil (no hat)	\$ 110.00
Ventilated Suit	\$ 130.00

Children/Kids Beekeeping Suits With veil

Small & Medium : \$ 50.00

**B
E
E

P
R
E
P
A
R
E
D**



Harvest & Extraction

Harvest Tools

Bag Strainer	\$ 5.95
Bee Escape Board - 10 frame	\$ 16.50
Bowl Strainer - plastic	\$ 6.75
Bucket Bench	\$ 14.95
Cappings Scratcher	\$ 5.50
Comb Capper (holds frames for uncapping)	\$ 29.95
Double Stainless Steel Sieve	\$ 30.95
Honey B Gone	\$ 25.00
Hoop Bag Strainer	\$ 8.00
Fume Board	\$ 15.50
Honey Gate -(orange)	\$ 10.00
Knife - Cold	\$ 15.00
Knife - Comb, serrated	\$ 13.50
Knife - Electric Hot	\$ 55.00
Multi Use Straining Kit	\$ 140.00
Pail Holder - Metal	\$ 35.75
Roller - Uncapper Plastic	\$ 15.00
Strainer double plastic	\$ 20.00



Bee Brush
\$ 6.50

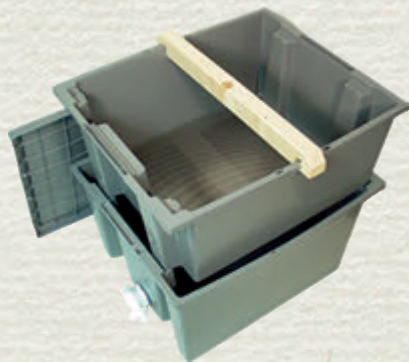


Rolling Uncapper
\$ 15.00



Economical
Double Strainer
\$ 20.00

*Use an extractor
Or harvest using the
Crush & Strain Method
with a bag filter !*



The Multi-Use
Straining System
makes honey
harvesting a
breeze.

\$ 140.00



Extractors

Extractor 2 frame (red hand crank)	\$ 250.00
Extractor 4 frame (red hand crank)	\$ 330.00
Extractor 4 frame Electric	\$ 525.00
Extractor 6 frame Manual	\$ 415.00

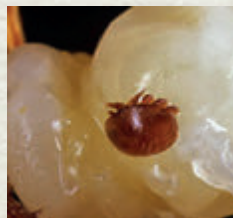
Premium Extractors

3100H 2 frame	\$ 360.00
3100H 4 frame	\$ 485.00
3100H 9 frame	\$ 580.00
3100P 9 frame Electric	\$ 830.00
Jr Capping Spinner	\$1,587.50

Bee Pests & Health

Pest & Disease Management

Hopguard II	12 treatments	\$ 48.95
MAQS Formic Acid	2 hive treatment	\$ 16.00
Varroa Vap		\$ 95.00
Oxavap Varrox Oxalic Vaporizer		\$ 165.00



Varroa Mites are the #1 killer of beehives worldwide. This external pest feeds on bees weakening them and spreading disease.



Api life VAR
\$ 5.00 pk



Oxalic Acid 35g
\$ 5.95

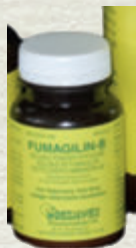


Vaporizers to fit
any budget.

Small Hive Beetles are a major pest in South Carolina. Beetles fly into the hive where their larva do damage.



Apivar 10 Strips
\$ 40.75 pk



Fumagilin- B
½ ounce
\$ 25.00



Beetle Blaster - disposable
\$ 1.80



Beetle Jail
A re-useable trap - fill ½ way with mineral oil. Clean and re-use
\$ 3.65



*Good health begins
with good nutrition*

Bee Health Supplements

Hive Alive	\$ 29.50
Honey B Healthy	\$ 25.00

Other Useful Bee Management Products for Beekeepers

AFB Test	\$ 14.50
Nite-Guard	\$ 19.95
Mite-A-Thol	\$ 5.00
Paramoth 1#	\$ 13.95

Books, Crafts & Bee Gifts

Beekeeping Books



Beekeeping for Dummies	\$ 22.99
The Beekeepers Handbook	\$ 26.00
Contemporary Queen Rearing	\$ 15.30
First Lessons In Beekeeping	\$ 12.00
Homegrown Bees	\$ 14.95

*We offer these titles & more
at our retail location.*

Get crafty!

Bee Well Honey Bee Supply offers many crafting & gift giving options. We have do-it-yourself kits for the crafty members of your family.



Hardwood Honey Dippers
\$ 1.50

A full line of candle making supplies. Molds, wicks & beeswax.

Bee Gift Items

*Visit our Bee Supply in Pickens SC
or our online store for a great
selection of bee themed gifts !*



Honey Containers

Bee Well Honey Bee Supply is proud to provide bulk honey containers for the beekeeping community. Stop by our retail store to see the large selection of containers we have in stock.



Bee Well Honey Mission Statement

Bee Well Honey Farm & Supply Inc. is family owned and operated by Kerry and Donna Owen. They are the producers and distributors for "Bee Well Honey" produced in the Southeast region of the United States. Focusing on streamline production and distribution they have a proven track record of sales and have improved customer service for retail grocers. Entrepreneurship is the greatest form of individuality and Bee Well Honey is highly motivated in branding, promotions and product creation. Bee Well Honey's old fashioned methods of extracting and bottling have created a craft honey sought after by families and honey connoisseurs. Bee Well Honey is 100% PURE RAW HONEY and made in the USA. Bee Well Honey offers educational boot-camps for beginning and advanced beekeepers and sells beekeeping equipment and honeybees to beekeepers all across Upstate South Carolina

Bee Well Honey

3 locations to serve the beekeeping & honey loving community



Bee Well Honey Distribution Center

909 West Main Pickens SC 29671

The Bee Well Honey Distribution Center supplies honey to many fine stores across the southeast. Our flavorful honey is a staple in homes of our repeat customers.

Bee Well Honey Bee Supply

815 West Main Street Pickens SC 29671

Visit our new Bee Supply. We have everything you need to get started and manage your honeybee colonies.



Bee Well Honey Natural Market

205 Hampton Avenue Pickens SC 29671

Our Natural Market is still open to serve you. Enjoy our coffee bar featuring organic coffee, lattes, cappuccinos -etc. We have candles, gifts and as always natural foods and supplements.

