

## BEGINNING SOUNDS

### What are Beginning Sounds?

Beginning sounds are the **letter sounds** you hear at the beginning of a word.

Listen carefully as you say each picture word aloud. Listen to the sound of the first letter.

**B** is the sound you hear at the beginning of

Sign In or [Sign Up](#) to download the printable version of this worksheet'. To the left of the box, a green beetle is partially visible. To the right, a soccer ball is partially visible. Below the box, a Dalmatian dog and the legs of a deer are partially visible." data-bbox="148 318 832 623"/>

You

**D** is

**PREVIEW**

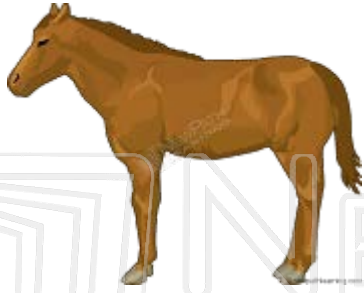
Please [Sign In](#) or [Sign Up](#) to download the printable version of this worksheet

dog and deer.

You make the **d** sound when you say dig, drop.

**F** is for  frog.

You make the **f** sound when you say fun, fit.



**H** is for

horse.

Say hide, hop.



**J** is

Say



## PREVIEW

**K** is

Say

Please [Sign In](#) or [Sign Up](#) to download the printable version of this worksheet



**L** is for

log.

Say love, land.



**M** is for

men.

Say my, may.

**N** is for 9 nine.

Say no, nice.



**P** is for \_pig.

Say pick, pat.

**R** is

Say

**S** is

Say sing, sit.

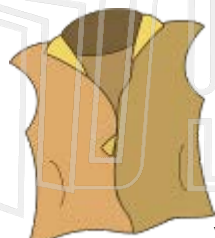


**PREVIEW**

Please [Sign In](#) or [Sign Up](#) to download the printable version of this worksheet

**T** is for 10 ten.

Say top, tan.



**V** is for \_vest.

Say vote, vine.



**W** is for water.

Say wait, wind.



**Y** is

Say

**Z** is

Say

**Sp**



## PREVIEW

Please [Sign In](#) or [Sign Up](#) to download the printable version of this worksheet

Here are some special beginning sounds you should know.

### **C has two sounds.**

A hard c sounds like the letter k. Say cat, cot, cut.

### **G has two sounds.**

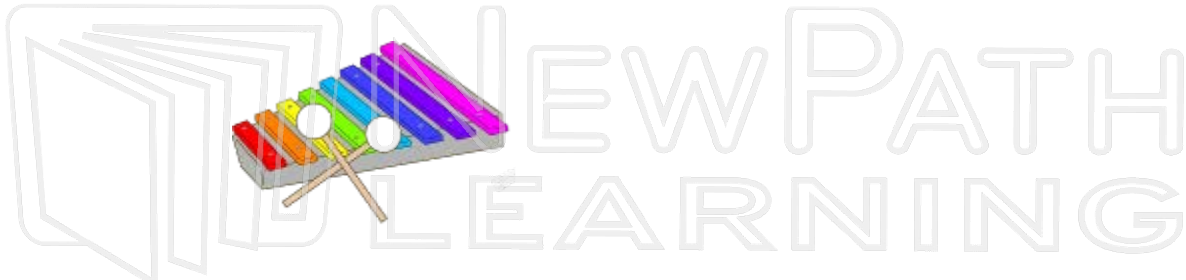
A soft g sounds like the letter j. Say gym, gentle, geode.

A hard g sounds like the beginning of girl.

Say get, got, gap.

**X has two sounds.**

Sometimes it says its own name. X-ray  
Sometimes it sounds like the letter z.



xylophone

**Q is never alone.** It always has u for a helper: queen.  
Say quit, quick, quiet.

**Voy**  
Here



**A is**

**PREVIEW**

Please [Sign In](#) or [Sign Up](#) to download  
the printable version of this worksheet

**E** is for  eggs. Say end, enemy.



**I** is for igloo. Say inch, into.



**O** is for \_\_\_\_\_ ox. Say on, odd, otter.



**U** is for \_\_\_\_\_ umbrella. Say up, upon, under.

Try

Cho

1]



**PREVIEW**

Please [Sign In](#) or [Sign Up](#) to download the printable version of this worksheet



2]

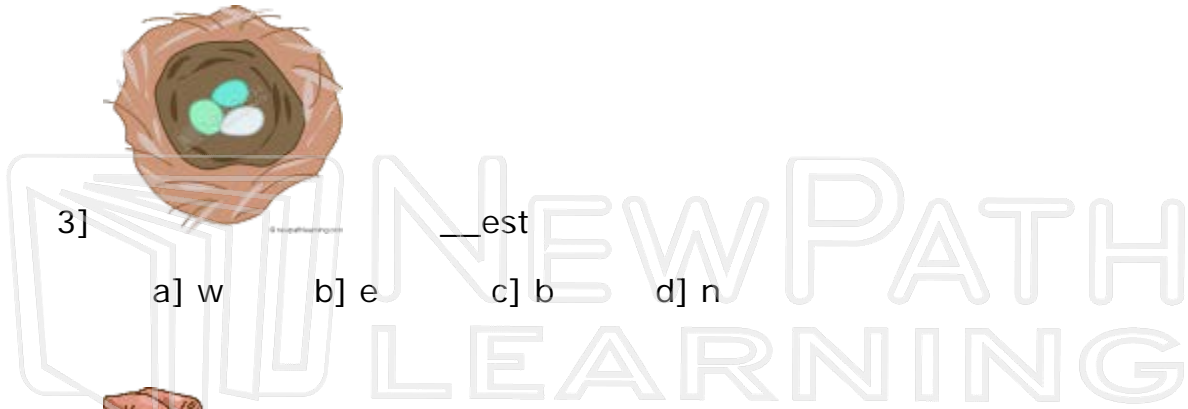
a] t

b] b

c] d

d] r

\_\_\_\_oat



3]

a] w

b] e

c] b

d] n

\_\_est

4]



**PREVIEW**

Please [Sign In](#) or [Sign Up](#) to download the printable version of this worksheet

5]

