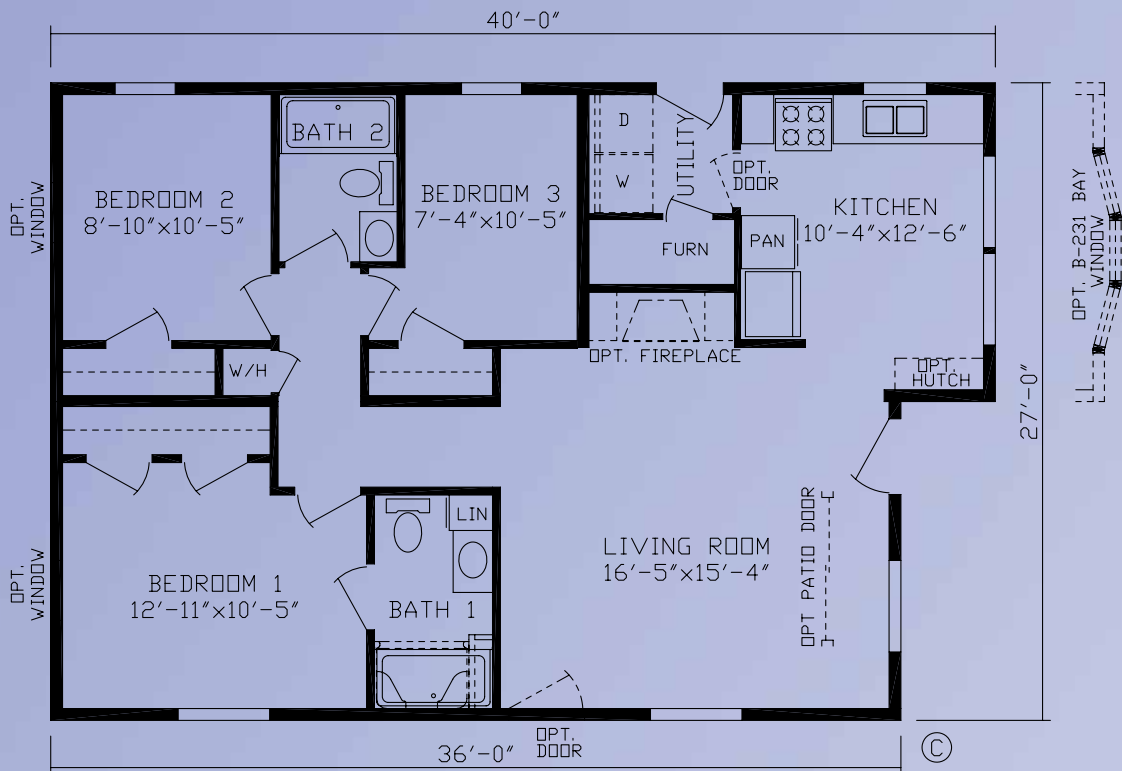




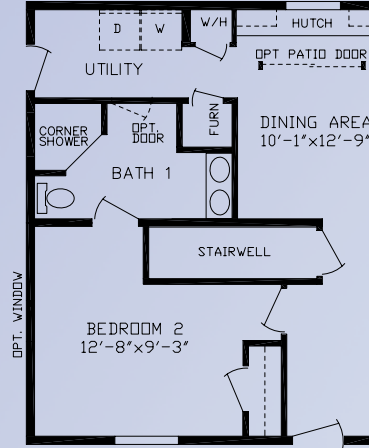
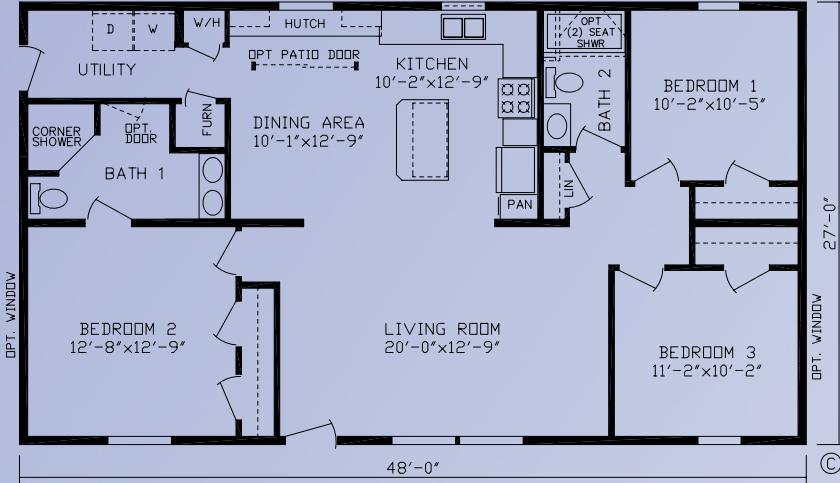
**Kingsley**  
**Ranch and Cape Cod Homes**



**BELMONT** 1026 Sq. Ft. 3BR/2BA Print # 92567



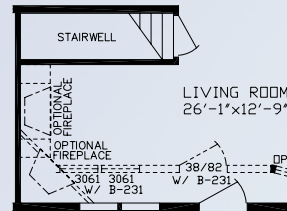
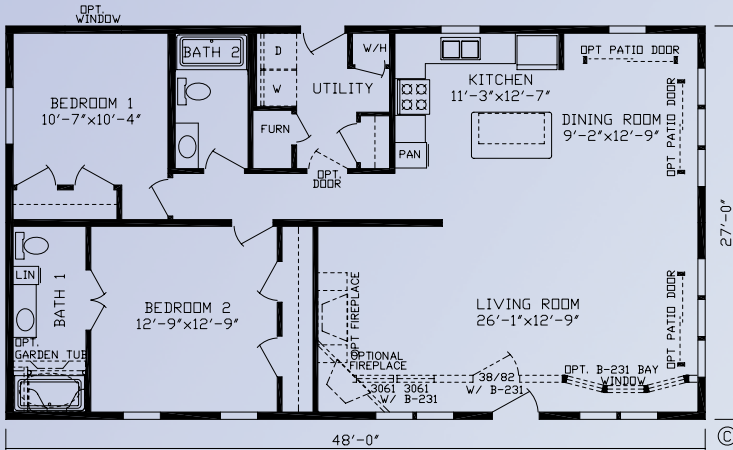
**BUCKINGHAM** 1296 Sq. Ft. 3BR/2BA Print # 92544



Basement Stair Location



**CAMBRIDGE** 1296 Sq. Ft. 2BR/2BA Print # 92511

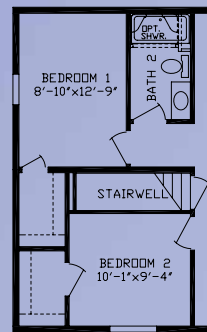
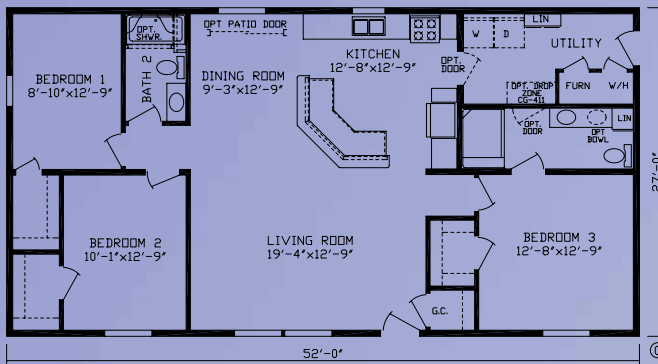


Basement Stair Location

M  
O  
D  
U  
L  
A  
R



**CARLISLE** 1404 Sq. Ft. 3BR/2BA Print # 92566



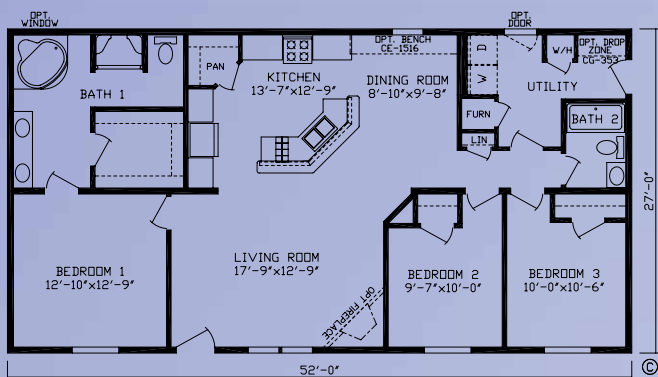
Basement Stair Location



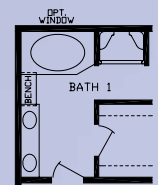
RO-5366  
Optional Kitchen w/  
Optional Fireplace



**CARDIGAN** 1404 Sq. Ft. 3BR/2BA Print # 92701



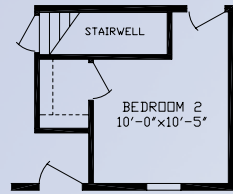
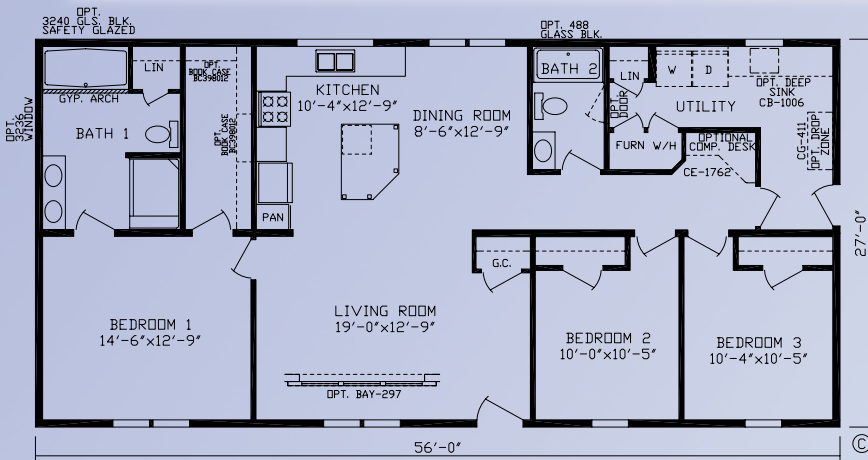
Basement Stair Location



RO-4981  
Optional  
Master Bath

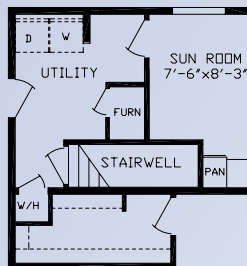
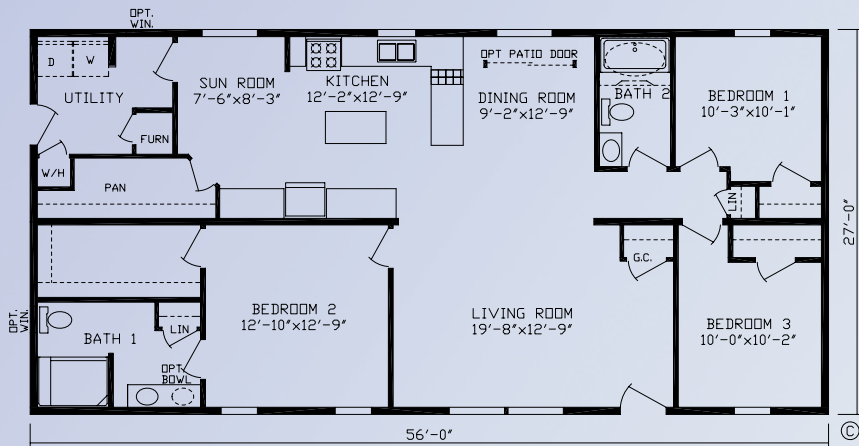


**NEWPORT** 1512 Sq. Ft. 3BR/2BA Print # 92574

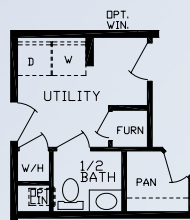


Basement Stair Location

**DURHAM** 1512 Sq. Ft. 3BR/2BA Print # 92702



Basement Stair Location

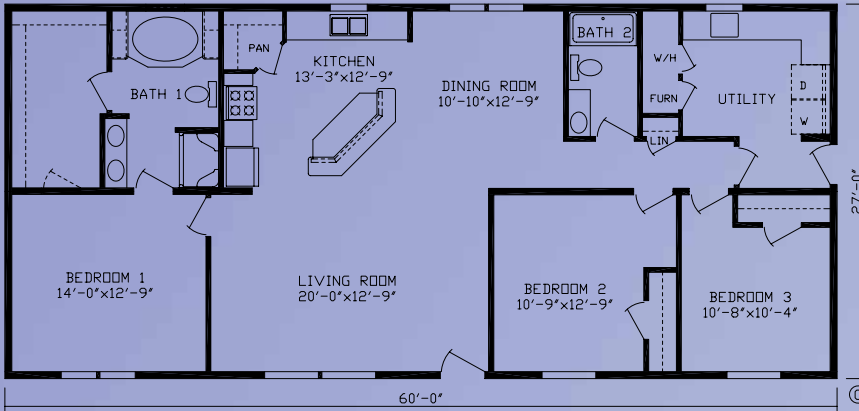


RO-5213 Opt. Utility 1/2 Bath

M  
O  
D  
U  
L  
A  
R



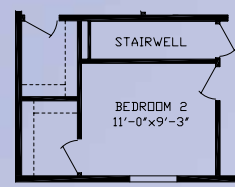
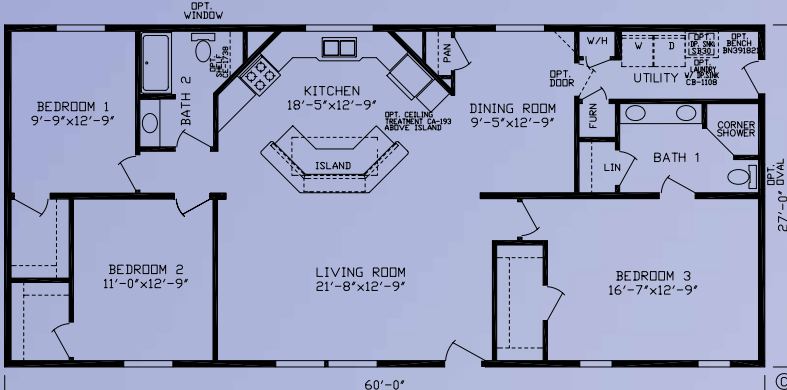
**NOTTINGHAM** 1620 Sq. Ft. 3BR/2BA Print # 92560



Basement Stair Location



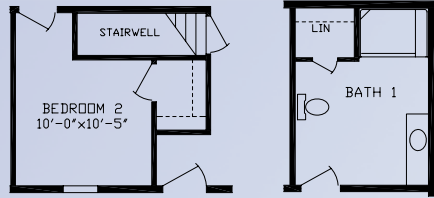
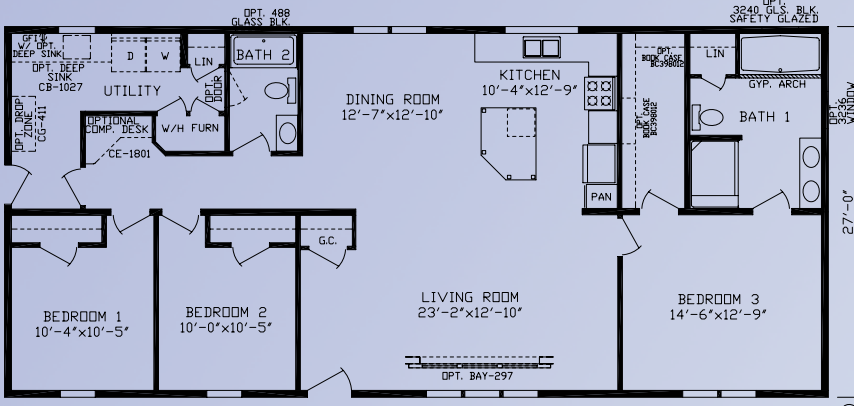
**NEWCASTLE** 1620 Sq. Ft. 3BR/2BA Print # 92572



Basement Stair Location

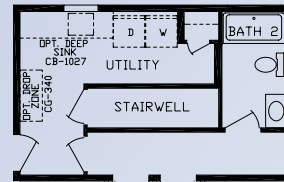


**WINDSOR** 1620 Sq. Ft. 3BR/2BA Print # 92585



Basement Stair Location

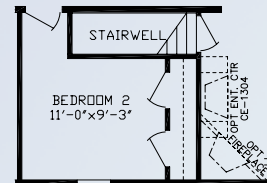
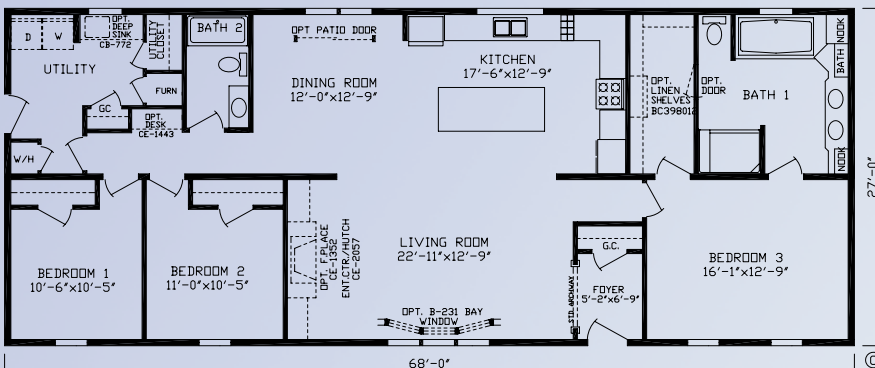
RO-6696  
Opt. Mstr Bath



RO-6243 Opt.  
Basement Stair Location



**WHITNEY** 1836 Sq. Ft. 3BR/2BA Print # 92582

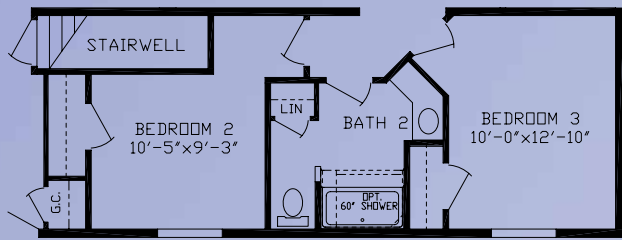
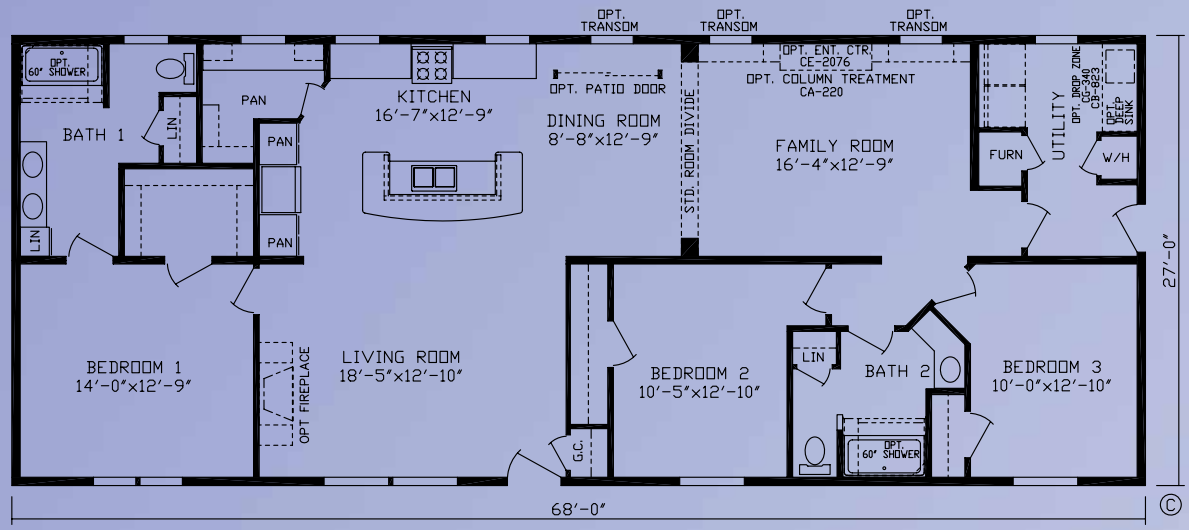


Basement Stair Location

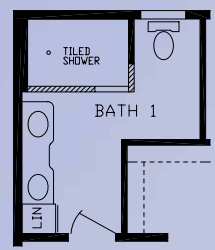
M  
O  
D  
U  
L  
A  
R



**WIMBLEDON** 1836 Sq. Ft. 3BR/2BA Print # 92590



Basement Stair Location



RO-6318  
Opt. Master Bath



# OPTIONS



Reclaimed Barn Wood Accent Wall & Tray Ceiling with Recessed LED Lighting



Stone Island



Euro-Style Glass Range Hood  
w/ Full Tile Backsplash



Stainless Steel Farmhouse Sink



Furniture Style Islands in all Shapes and Sizes

M  
O  
D  
U  
L  
A  
R

# YETLUSGN IN K



## MODULAR CRADLE OF STRENGTH®



- 1. A Generous Bead Of Glue Applied To Each Joist. 3/4" T&G Floor Decking Is Screwed Around Perimeter And In The Field To Sturdy I-Joists.
- 2. Individually Engineered Duct System With Perimeter Registers.
- 3. 2x6 Exterior Wall Studs 16" On Center Featuring A Thick Blanket Of Owens Corning Insulation.
- 4. Calculated Headers On Edge Above All Windows And Patio Doors.
- 5. Structural Board Sheathing Adds Extra Strength To All Exterior Walls.
- 6. Weather Wrap Decreases Wind Infiltration.

- 7. Galvanized Steel Strapping From Sidewall To Floor.
- 8. 2x4 Interior Partition Walls.
- 9. 50lb. Engineered Roof Trusses With Steel Plates At Critical Joints.
- 10. Energy Saving Blown Roof Insulation Adds To The Comfort Of Your Home.
- 11. Air Chutes Ensure That The Roof Breathes Properly.
- 12. 1/2" Structural Roof Decking.
- 13. Lifetime Architectural Shingles.
- 14. Energy Saving Low "E" Thermopane Argon Gas Filled Vinyl Windows With Grids.
- 15. 2x6 Bottom Plates and Double 2x6 Top Plates On All Exterior Walls.

**Energy Saving / \$\$\$ Saving Features Include:**

Trane High Efficiency Furnaces Use Up To 27% Less Energy Than Standard Forced Air Furnaces

Vinyl Clad Low "E" Energy Efficient Windows. Enfold You In Warmth And Comfort.

2x6 Exterior Walls Filled With Owens Corning Fiberglass Insulation

Warm Edge Insulated Low "E" Glass Thermal Performance Windows With Dual Weather-Stripping And Pocketed Sash For Superior Resistance To Air Infiltration.

Engineered Insulated Duct System. The Heating And Cooling System Uses 60% Of A Home's Energy. Our Duct System Is Sealed And Insulated To Provide Maximum Efficiency And Balanced Air Flow For Years Of Savings And Comfort.



Started in 1971 on the site of a former cabbage factory, Fairmont Homes has fashioned a contemporary look for their homes. Since its inception, Fairmont has experienced tremendous success, becoming one of the largest single location facilities in the housing industry and evolving into a family of companies that produce beautiful and diverse value-packed housing.



For over 40 years Fairmont Homes has provided thousands of families with the comfort, security, and a general well being that only a quality-built home can offer. As a leader in innovation and superior construction techniques, Fairmont continues to transform the factory built housing industry into the best value in American home ownership.



M  
O  
D  
U  
L  
A  
R

# UTILITY & BATH



Furniture Style Lavatories



Laundry Centers



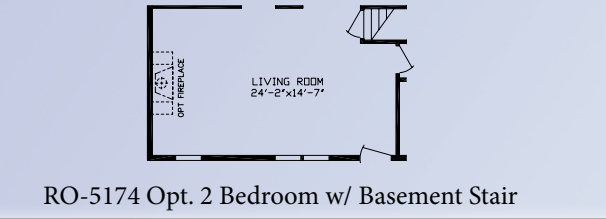
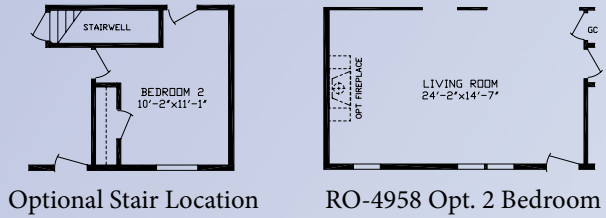
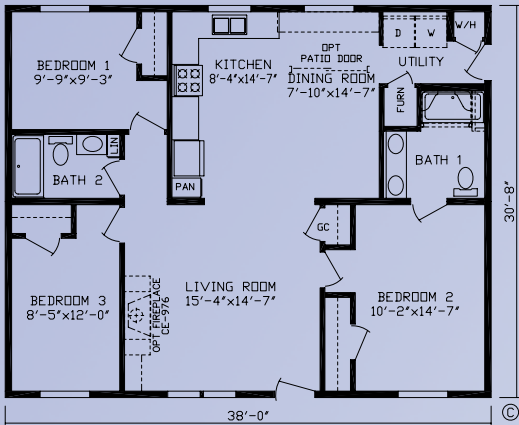
Ceramic Shower w/ Glass Enclosure



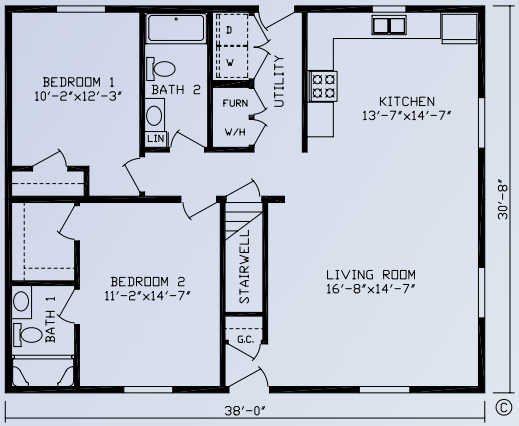
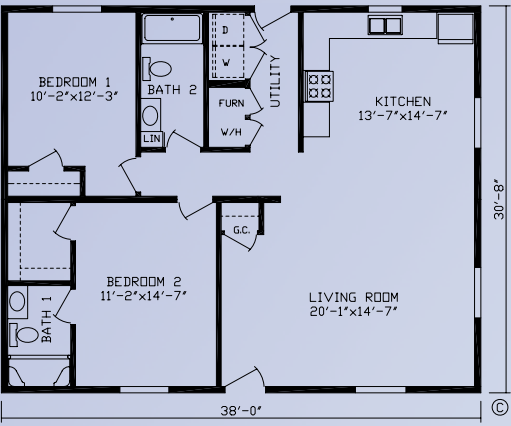
Ceramic Walk-In Shower w/  
4-Jet Massage Shower Panel



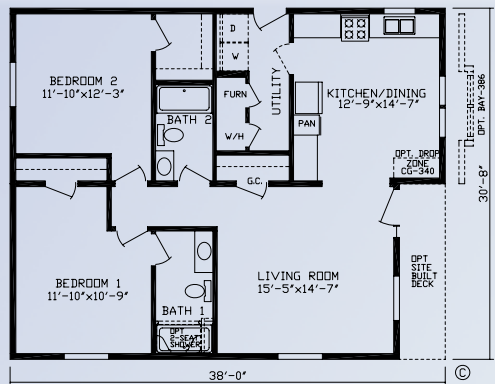
**WOODLAND HILLS** 1165 Sq. Ft. 3BR/2BA Print # 92700



**DARTMOUTH** 1165 Sq. Ft. 2BR/2BA Print # 92580



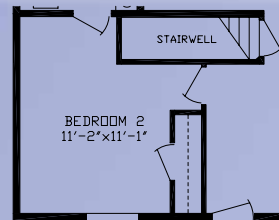
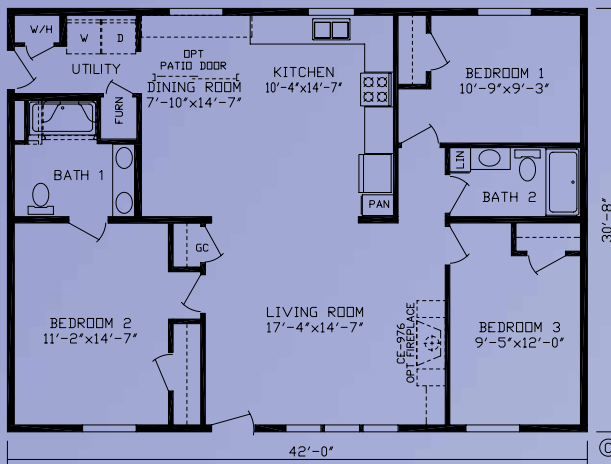
**CAMDEN** 1103 Sq. Ft. 2BR/2BA Print # 92571



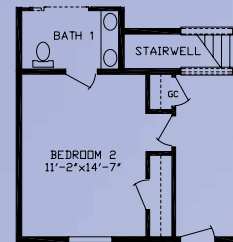
M  
O  
D  
U  
L  
A  
R



**OXFORD** 1287 Sq. Ft. 3BR/2BA Print # 92581

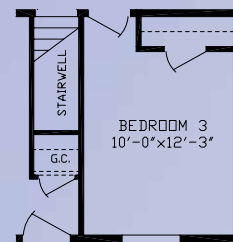
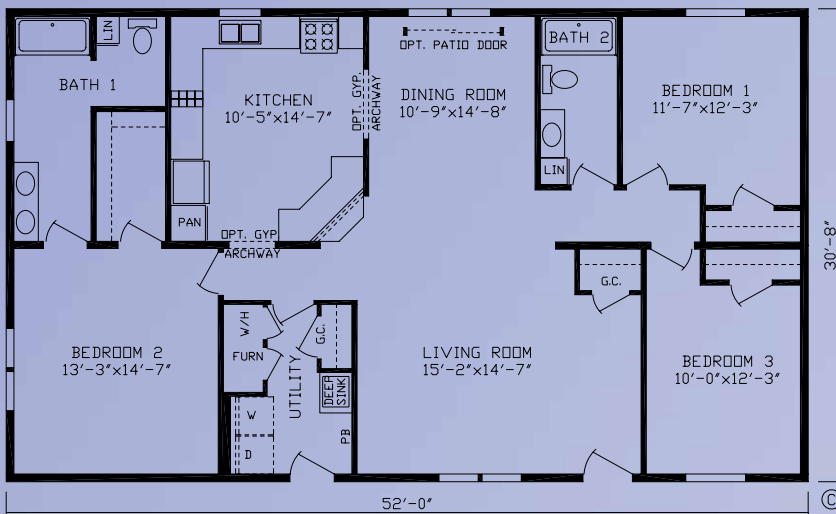


Basement Stair Location



RO-6070 Basement Stair w/ Half Walls

**MIRAMAR** 1594 Sq. Ft. 3BR/2BA Print # 92588

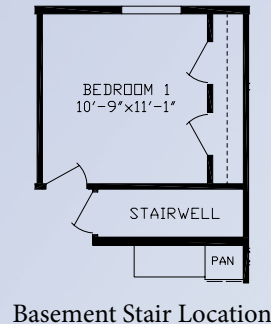
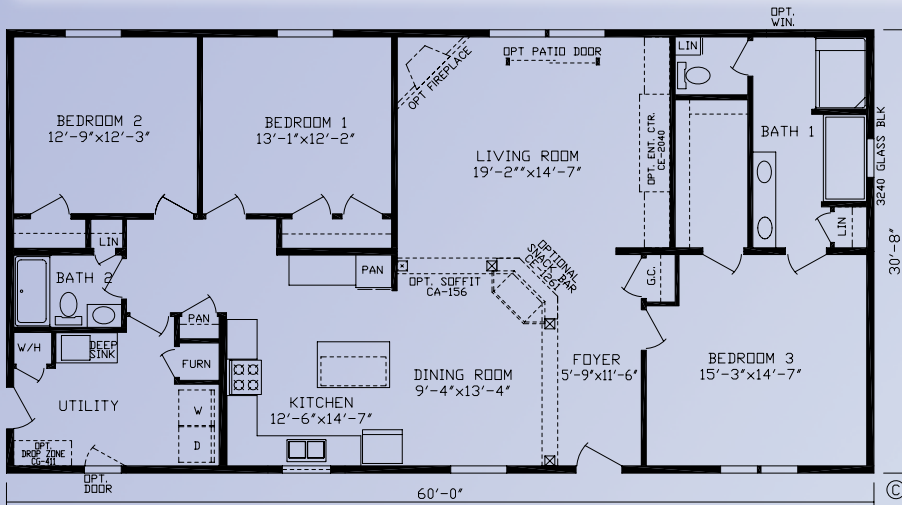


Basement Stair Location



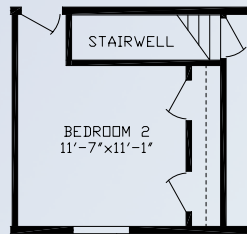
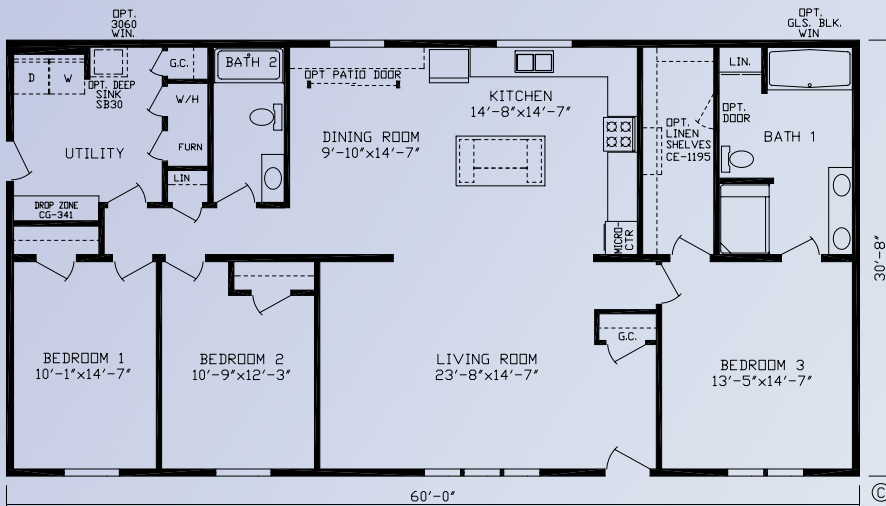
M  
O  
D  
U  
L  
A  
R

**EDINBURGH** 1840 Sq. Ft. 3BR/2BA Print # 92573



Basement Stair Location

**HUNTINGTON** 1840 Sq. Ft. 3BR/2BA Print # 92575

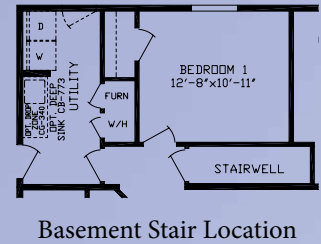
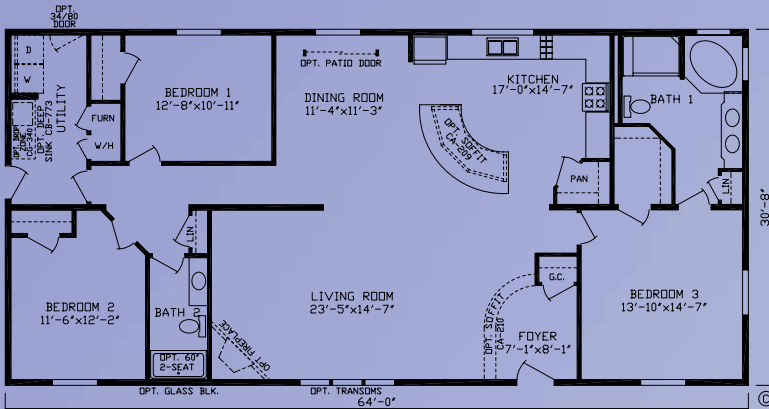


Basement Stair Location

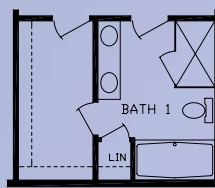
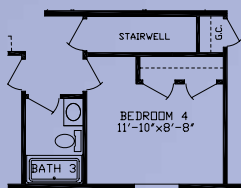
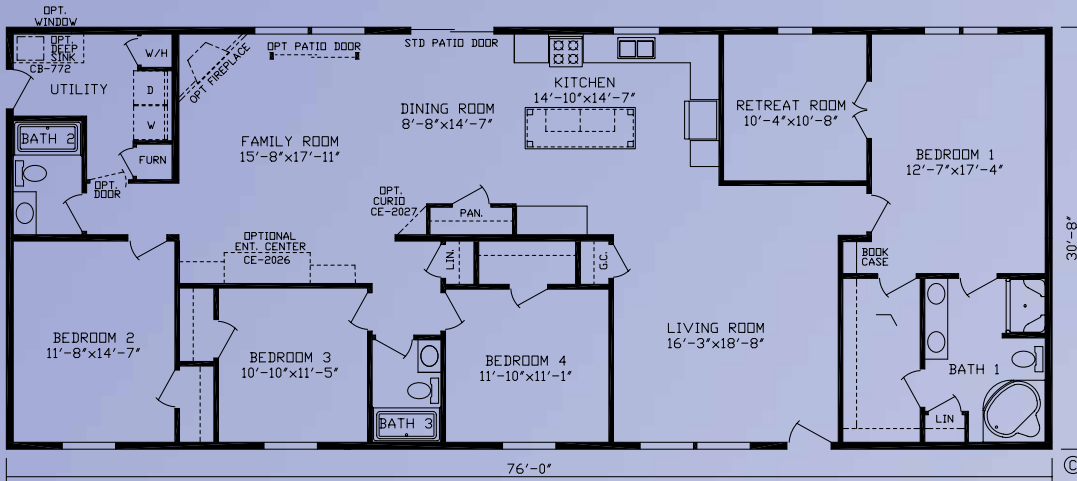
# K I N G S L E Y



## SOUTH HAMPTON 1962 Sq. Ft. 3BR/2BA Print # 92578

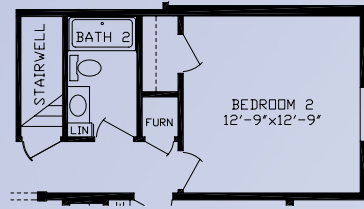
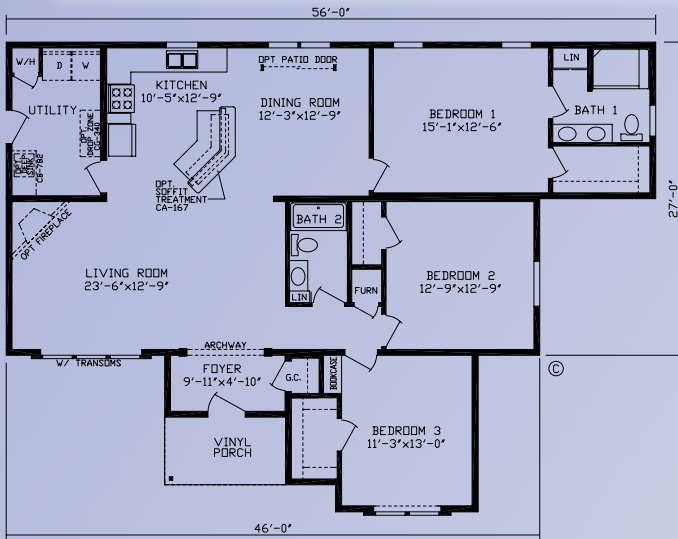


## WESTMINSTER 2330 Sq. Ft. 4BR/3BA Print # 92526





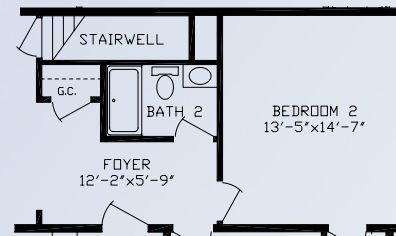
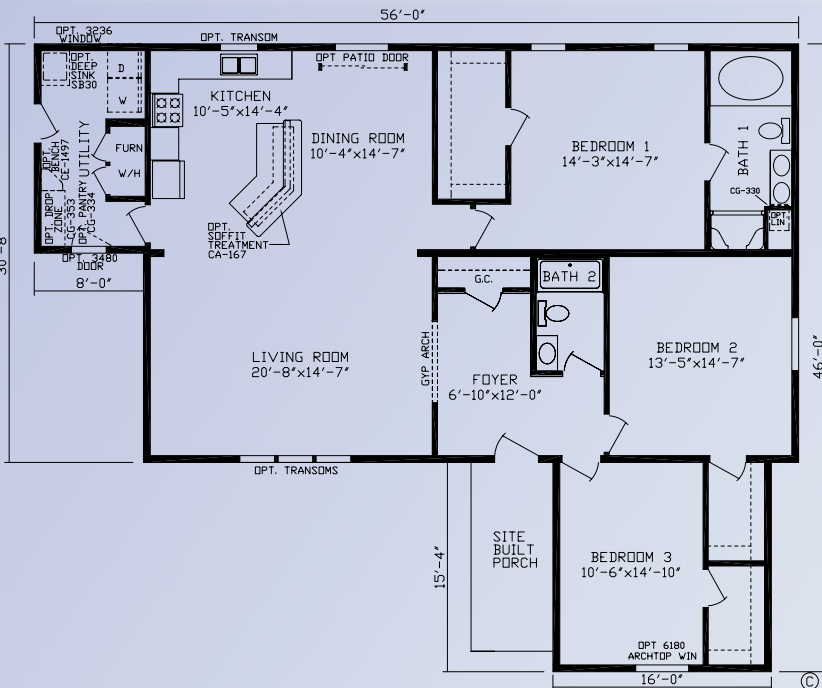
**TIMBERLAKE** 1646 Sq. Ft. 3BR/2BA Print # 92587



Basement Stair Location



**YORKTOWN** 1840 Sq. Ft. 3BR/3BA Print # 92555

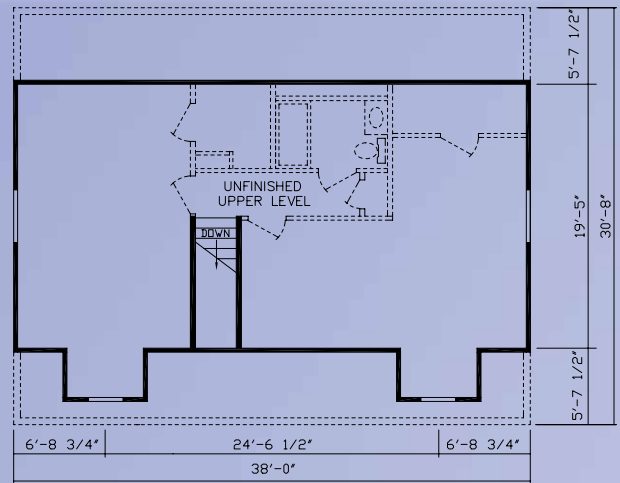
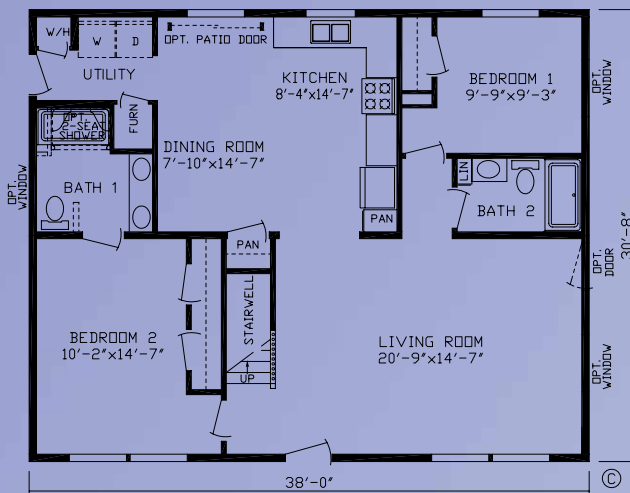


Basement Stair Location

M  
O  
D  
U  
L  
A  
R

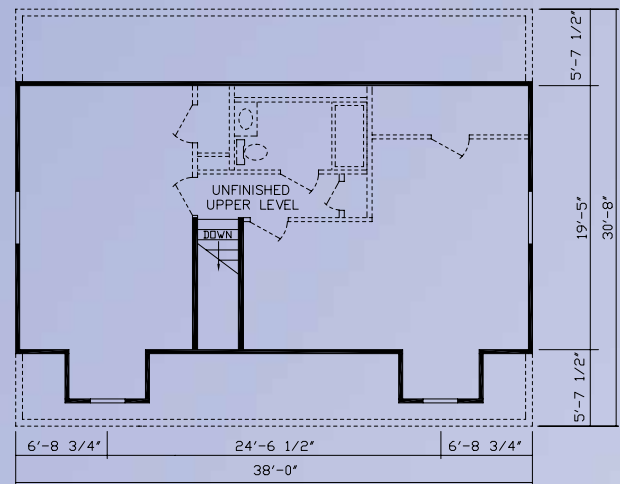
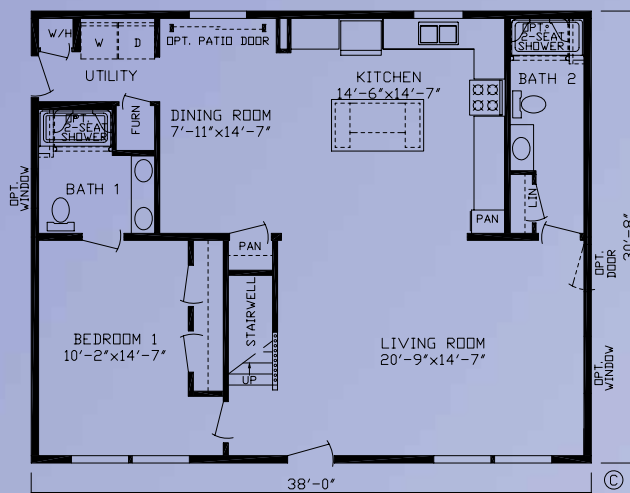


**ARBOR RIDGE** 1165 Sq. Ft. 2BR/2BA Print # 99700



Upper Level Finished On-Site by Others

**ASHFORD** 1165 Sq. Ft. 1BR/2BA Print # 99702

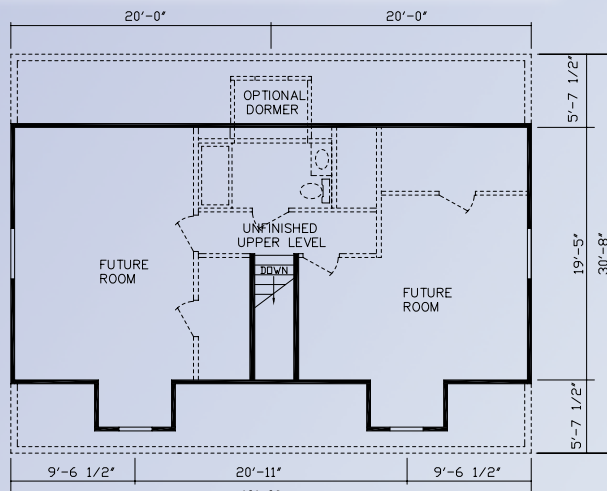
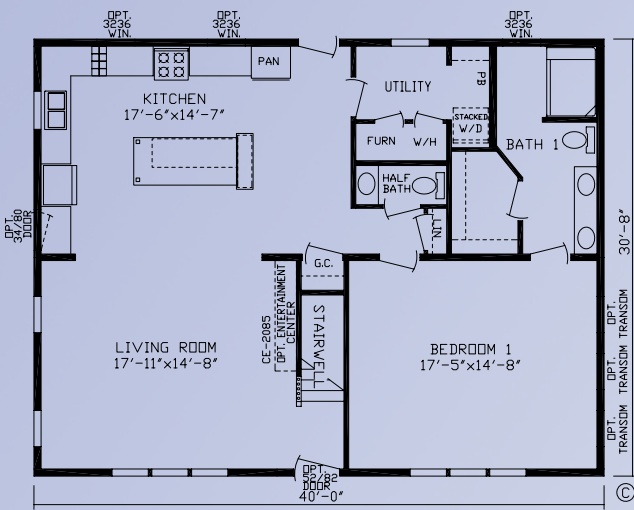


Upper Level Finished On-Site by Others



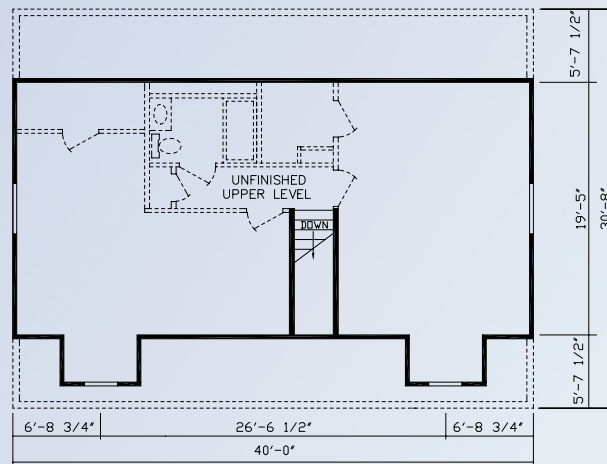
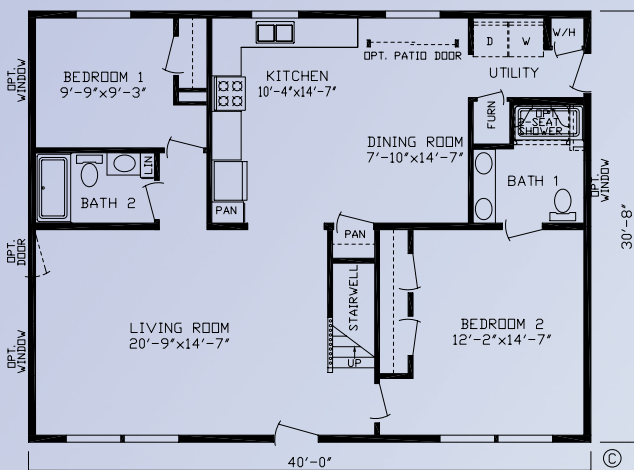
M  
O  
D  
U  
L  
A  
R

**NEWBERRY** 1226 Sq. Ft. 1BR/1-1/2BA Print # 99704



Upper Level Finished On-Site by Others

**ARLINGTON** 1226 Sq. Ft. 2BR/2BA Print # 99703



Upper Level Finished On-Site by Others



*Quality*

*Value*



*Integrity*



*Craftsmanship*



\* Pictures Show Various Features that may be Optional  
Some Images Depicted in this Brochure Show Porches, Garages or Breezeways that are built on site by others.  
©Copyright 2017 Fairmont Homes, LLC, Nappanee, IN 02-17 SP 10

P.O. Box 27, Nappanee, IN 46550  
[www.fairmonthomes.com](http://www.fairmonthomes.com)