



Best Practices for Monitoring E-Commerce Performance

From consideration to checkout, learn how New Relic can help you optimize performance across all your digital channels

Table of Contents

OVERVIEW	03
<hr/>	
E-COMMERCE MONITORING IN PRACTICE	04
Real-time visibility across your full stack	04
Starting with your shopping experience	04
Web commerce	05
Mobile commerce	07
Check through your backend services	08
Harden your underlying infrastructure	09
<hr/>	
BUILDING PROCESSES ACROSS YOUR TEAM	10
Intelligent alerting for more actionable responses	10
Create deeper visibility into your technology, buyers, and business	10
Show the impact of technology on the larger business	11
Create a customer-centric view of your business	13
<hr/>	
NEXT STEPS	14

Overview

Instantly gratifying omnichannel experiences across any device at any time have become the expectation rather than the exception. Shoppers want what they want, when and where they want it, and if they don't get it, they'll bounce. The [New Relic Digital Intelligence Platform](#) is designed to help development and operations teams perfect the online buying journey—on Black Friday weekend as well as all year long.

In this guide, you'll learn best practices for proactively optimizing e-commerce performance across web and mobile apps as well as for improving their underlying services and infrastructure.

To begin, it's important to measure the service-level quality of your site performance across three dimensions:

- 1. Availability:** Is it up and running?
- 2. Functionality:** Is it working right?
- 3. Speed:** Is it working fast enough?

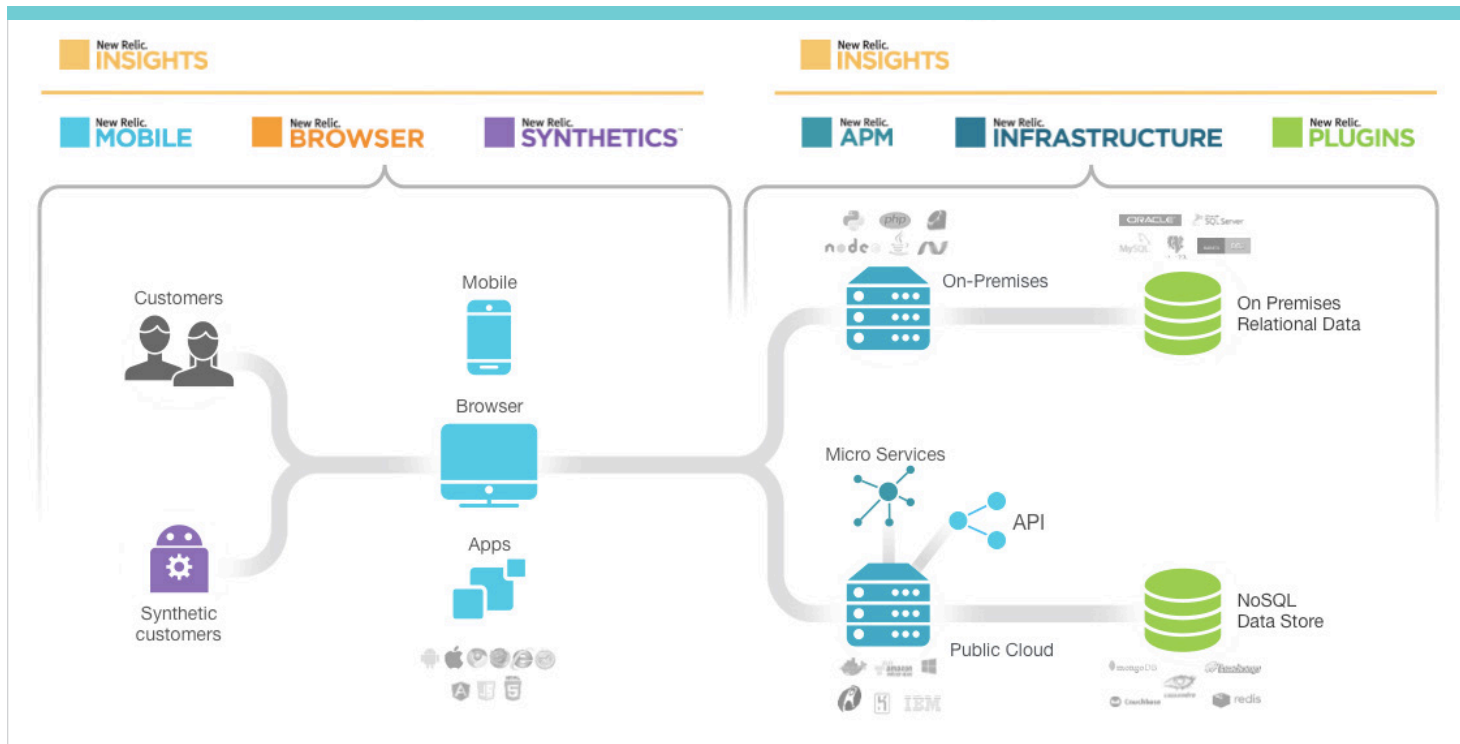
This creates a framework to improve the shopping experience through the different layers of your technology stack.

E-commerce monitoring in practice

Real-time visibility across your full stack

The **New Relic Digital Intelligence Platform** is designed to provide visibility through all the different parts of the technology stack to help you quickly troubleshoot any issues that may be degrading the shopping experience for your customers.

That's important, because your customers have no sense of whether it's the frontend, backend, infrastructure, or third-party payment processor causing an error—they simply bounce to the competition if they can't buy what they want. No matter the cause, the frustration of not being able to make a purchase can trigger huge losses for your businesses—lost revenue, customer dissatisfaction, poor site reviews, and more.



Starting with your shopping experience

Given that the goal of any e-commerce site is to sell products, let's start with understanding the technology layer closest to the customer: the website frontend or native mobile app itself. We'll address web and mobile commerce separately because they have slightly different characteristics.

WEB COMMERCE

Let's run through some of the **key business metrics** and features that New Relic offers to optimize site performance in the context of business outcomes such as revenue and conversion rates.

Availability: Time is money. If your site is slow and shoppers can't complete the checkout process, then your customer engagement and business will suffer. That means the first goal is to verify your site is up and running:

- **Check browser throughput.** When you suspect something has gone wrong, the best test for overall site health is your **throughput**. Looking at key transactions in the buying journey such as the checkout button in **New Relic Browser** can reveal whether customers are engaging with your site in real time. If there is a high shopping cart drop-off rate, it could mean buyers aren't able to buy, possibly due to a problem with your site's performance or another variable such as an external payment provider, and they've bounced from your site in frustration. An unexpected dip in throughput is often a sign that there's an issue to troubleshoot.
- **Set up availability alerts.** Since you don't want to be notified of issues by frustrated shoppers who can't complete their purchases, you want to continually check that your site is up and running by using **New Relic Synthetics' availability monitors**. If page-load time is lagging or a third-party API is causing a spike in shopping cart drop-off rates, New Relic can trigger a **monitor alert** and notify you before your shoppers are even aware of a problem. These monitors can regularly test your website from multiple global locations based on the distribution of your customer base. When coupled with the global throughput information in New Relic Browser's **filterable geographies**, you can get a more comprehensive view of your data and a more complete picture of availability than you could with Browser/Synthetics monitoring alone.
- **Track uptime service level agreements (SLAs).** Establish the baseline uptime for your site with the **SLA report** in **New Relic Synthetics**. These monitors keep tabs on your overall uptime on a daily, weekly, or monthly cadence, which you can communicate to stakeholders throughout your team, business, or customer base.

Functionality: Once you've established that your site is up and running, you need to make sure that it's not broken for your shoppers.

- **Validate that key transactions work correctly.** Simulate traffic loads and essential user interactions (like browse-to-buy and checkout) with New Relic Synthetics' **scripted monitors** to ensure all systems are "go" before a big launch or sale. This will help you identify if something is explicitly broken for your shoppers and to ensure your most important transactions are being exercised every minute from around the globe. The goal is to ensure that any customer-impacting issues, even in the underlying backend and infrastructure layers of your site, will also be detected.
- **Triage the JavaScript errors.** When something has gone wrong on the frontend, it's generally a black box since there are no available logs to parse. Review the exceptions your shoppers are experiencing in their browsers with New Relic Browser's **JavaScript errors**. To help prioritize errors for troubleshooting, you can see this information by name, channel, transaction in the buyer's journey, or any other custom attributes you find important.

- **Set up functionality and error alerts.** As with the availability metrics, all of these metrics are integrated with New Relic's **alerting system** and can be set up to notify you when anything has gone wrong. Setting up alerts on your most important clicks and buyer flows is particularly useful; notifications here mean critical click paths across your site are broken.

Speed: Now that you know you're up and running, it's time to make sure your site is not so slow that it's generating high shopper bounce rates:

- **Triage frontend load times.** Identify your slowest **page loads** in New Relic Browser to see the major bottlenecks in your shopping experience. Leverage **percentiles** and **histograms** to better understand what's happening across your customer base and down to the individual (a small set of pages can skew averages when viewed with less sophisticated tools). Couple this with custom targeting of your site's most important pages (shopping cart, payment, etc.) to focus your efforts on the areas of greatest impact.
- **Optimize and verify frontend code.** Blocking JavaScript and un-optimized AJAX calls can lead to slow frontend execution. Use New Relic Browser to triage these issues, and then verify that your changes have actually improved the shopping experience. Using **historical data** can help you easily identify bottlenecks, and then quickly and objectively quantify your engineering improvements.
- **Configure your frontend Apdex score.** New Relic uses an industry standard known as **Apdex**, which measures users' satisfaction with your site's response times relative to a user-defined value. It's a simplified SLA solution that gives retailers better insight into how satisfied their shoppers are. Set up a **frontend Apdex threshold** in New Relic Browser to match the responsiveness your customers expect. Then work to improve this benchmark of shopper satisfaction.
- **Manage page bloat.** A major cause of slow page loads is the burgeoning size of web pages. **Waterfall graphs** in New Relic Synthetics can show you the size of the assets in your pages (i.e., images, media), while **session traces** in New Relic Browser show how long it takes for actual shoppers to load these assets and execute JavaScript, with granularity down to individual customers.
- **Check third-party JavaScript slowness.** Page bloat can also result from embedded SEO tags and third-party APIs: tracking, payment gateways, ERP/CRM databases, social, analytics, and more. These services can cause performance bottlenecks and may need to be disabled when they lead to site performance delays or breakages. Use **session traces** in New Relic Browser to identify the right third-party culprit. This can also inform discussions on the "value" of these in your e-commerce stack vs. the page load "cost" they incur.
- **Set up page load speed alerts.** **Dynamic baseline alerting** can help set the thresholds for healthy page-load response times. A gradual degradation of response times could be the precursor to more serious problems and can serve as an early warning signal, especially after a recent code deploy.

MOBILE COMMERCE

Here are some of the key health metrics and features that New Relic offers to track the quality of the customer shopping experience using your mobile app, again using the dimensions of service-level quality discussed above:

Availability:

- **Track app launches.** Perhaps the most important question for mobile developers is “Are people using my app?” **New Relic Mobile** answers this question by tracking how often an **app launches**. If this number collapses, especially after a new release or mobile OS version, it could mean shoppers are experiencing errors, crashes, or slowness.
- **Review crash occurrences.** The frustration of opening an app to an immediate crash is often enough to make a shopper delete the app. **Crash analysis** offers detailed insights into why crashes are occurring in production, with the context needed to help fix them. You can better understand your highest-priority crashes through powerful analytics, filter to focus on high-crash screens, view the most common location in the code associated with crashes, or drill down to an individual customer’s crashes.
- **Set up alerts.** If your number of app launches falls, or the number of crashes skyrockets, particularly after a new release, you want to be first to know. Set up **alerts on the health of your mobile app** to make sure you quickly learn of these customer issues before your app store ratings start to sink with crash complaints.

Functionality:

- **Fix HTTP errors.** Rarely are mobile apps self-contained. Instead, they’re typically dependent on backend APIs, but limited visibility makes it difficult to debug API errors. Shared context into the backend with **HTTP request** information can equip mobile developers to be more responsive to API errors and partner more closely with backend teams. **Cross-application traces** help teams understand the end-to-end path of an HTTP transaction from the mobile app to the corresponding application. Combined with New Relic Synthetics’ **API monitoring** of the backend, you can proactively identify issues before shoppers experience them.

Speed:

- **Improve HTTP response times.** In mobile development, you can only be as fast as your backend APIs. When silos separate mobile and backend developers, performance SLAs are hard to establish and audit. Using New Relic Mobile, you can see the **API transactions** broken down by location, device, and even connection type. A common language and data showing where milliseconds are being spent helps make performance a responsibility for everyone on the team.
- **Track user interaction times.** A poorly written piece of mobile code can cause screen stutters, or even lock up a UI thread completely in a hard freeze. New Relic Mobile builds an analysis of the speed of each user interaction in your app, with detailed breakdowns of the most **common and slowest interactions**. That helps you spend your time where you can make the largest impact, leveraging real interaction data with granularity down to individual customers.

Check through your backend services

Websites and native mobile apps are often powered by a set of supporting APIs and microservices. If these backend services degrade, so can the shopping experience. Fortunately, there are techniques that can make it easier to monitor and debug these backend components to help ensure a consistently high-quality experience for your customers:

- **Ensure the health of your backend APIs and microservice topology.** Identify your key microservice bottlenecks using [New Relic APM service maps](#) and tune their performance. Then set up [API monitors](#) in New Relic Synthetics on these services to validate that the services are available, providing the correct API payload responses, and doing so within the response time defined by your SLA. Microservices that are not publicly accessible can be monitored using [private minions](#) in New Relic Synthetics.
- **Configure your backend Apdex score.** Set up an [Apdex](#) threshold in New Relic APM to match the responsiveness from your customer base, and align this to your [Apdex score in New Relic Browser](#). You will likely find the greatest opportunity to improve the speed of your page load in the frontend, which is monitored by New Relic Browser. However, this optimization work will often involve jumping into the backend to tune slow endpoints and services.
- **Check performance of third-party services.** Third party-services for data, payment, inventory, and other functions can create backend dependencies. Any issues with your third-party vendors can cause degradations or crashes; monitor these services and endpoints with [New Relic Plugins](#) and [New Relic Synthetics API monitors](#)—and decouple these external services if necessary.
- **Triage backend errors.** Review the errors most common in the most important parts of your application errors in [New Relic APM error analytics](#) so you can triage and address the ones with the greatest impact on your quality of service.
- **Identify key transactions in your services.** After identifying your key services, you can start identifying the key application transactions within these services—the most critical path through your most critical services. Flag them as [key transactions](#) in New Relic APM for heightened monitoring visibility to help ensure early awareness of any issues.
- **Resolve slow application transactions and database calls.** Troubleshoot slow-running application transactions or blocked database calls with the greatest impact on your shoppers for tuning and optimization. Triage these bottlenecks in [New Relic APM transactions](#) and [databases](#), respectively, to check overall responsiveness and customer experience.
- **Set up backend site alerts.** If your web server goes down, your whole shopping experience goes down, so be sure to set up alerts on the most critical areas of your site so you can be notified of the warning signs:
 - Set up uniquely prioritized alerts on the [key transactions](#) so that if they break, you know to expedite your response.

- Configure **deployment markers** in New Relic APM to provide greater context to your alerting policy. Alerts triggered by broken key transactions, spikes in error rates, or lengthening response times immediately after a deployment may point to a bad release that needs to be rolled back.

Harden your underlying infrastructure

The foundation of your technology stack is your on-premise, hybrid, and/or cloud infrastructure. Issues at this tier can bring down everything above it, including the customer shopping experience. The measures below can help make sure you have full visibility into how your infrastructure is working:

- **Make sure hosts are responsive.** Create '**Host Not Reporting**' alerts in **New Relic Infrastructure** to find out if you have unresponsive systems.
- **Track system resource health and consumption.** If your underlying infrastructure goes down, your whole shopping experience goes down, so it's critical to set up **New Relic Infrastructure alerts** to ensure key resources like compute, network, and storage are not exhausted or over-provisioned, or that vital processes have not gone down.
- **Track configuration changes.** Infrastructure changes are a leading cause of outages. Use **correlated health metrics** in New Relic Infrastructure to make sure your containers and infrastructure don't go down due to a bad configuration update, even across different data centers, hybrid environments, third-party e-commerce platforms, or cloud providers.
- **Manage capacity and scaling.** Leverage **load testing** to see if you have sufficient infrastructure resources to handle traffic spikes without service degradation as well as for capacity planning for future growth.
- **Understand performance of third-party services.** Third-party services for data stores, payment, inventory, cataloging, and others can create backend dependencies. Vendor issues can cause degradations or crashes; for example, you can monitor AWS services and endpoints with **New Relic Infrastructure integrations**.
- **Track performance of Docker containers.** Container services create an additional technology layer where system issues may arise. Review **Docker health metrics** in New Relic to ensure system stability.
- **Integrate monitoring into your IT automation workflow.** Make sure your **configuration management tools** include monitoring as part of your infrastructure automation to ensure resources are automatically instrumented for monitoring. New Relic Infrastructure, for example, offers pre-built integrations for **Ansible**, **Chef**, and **Puppet**.
- **Review security updates and packages.** Zero-day vulnerabilities and outdated packages can expose security vulnerabilities, and can require extensive inventory audits to patch. Quickly search across your infrastructure in seconds using the **inventory search** function in New Relic Infrastructure to address these security issues.

Building processes across your team

The complexity of modern technology stacks creates a tremendous amount of surface area to manage and monitor. To make e-commerce monitoring effective at scale, you need to highlight the most urgent items with actionable context, route that information to the right teams, and integrate it into your everyday processes. Let's walk through putting it all together:

Intelligent alerting for more actionable responses

Alerts are the critical step for creating actionable notifications for key events throughout your technology stack. Building out a comprehensive and intelligent alerting policy helps teams deliver a better digital shopping experience—and sleep more soundly at night:

- **Create a better signal-to-noise ratio.** Noisy alerting policies create alert fatigue and desensitization to notifications by “crying wolf.” That’s a recipe for truly meaningful alerts to be missed until it is too late. [Dynamic baseline alerting](#) can help establish the healthy band for key metrics, even considering seasonality, cyclicity, or noisy data patterns. Use [severity-level thresholds](#) to prioritize high-importance notifications and prevent desensitization to alerts. Group alerts together into [defined incidents](#). And be sure to provide runbook instructions so responders understand the potential risks of the alert and how to respond appropriately.
- **Create more targeted alerts.** [NRQL alerting](#) lets you build code-defined alerting policies so you can create more targeted alert criteria on important metrics. For example, you can create alerts on specific high-priority response codes, custom error codes, specific application exceptions, system metadata, cloud infrastructure tags, and more.
- **Route issues to the accountable team.** Update [notification channels](#) and [alert contacts](#) for faster resolution to make sure the alert gets sent to the right team first, depending on what part of the stack is affected.
- **Integrate alerts into ChatOps and existing workflows.** Pre-built alerts integrated into [collaboration platforms such as Slack and HipChat](#) notify engineers where they hang out, with additional available integrations and webhooks into your existing collaboration workflows, enterprise service buses, custom systems, and more. New Relic also offers [iOS and Android apps](#) to view dashboards and receive push notifications.

Create deeper visibility into your technology, buyers, and business

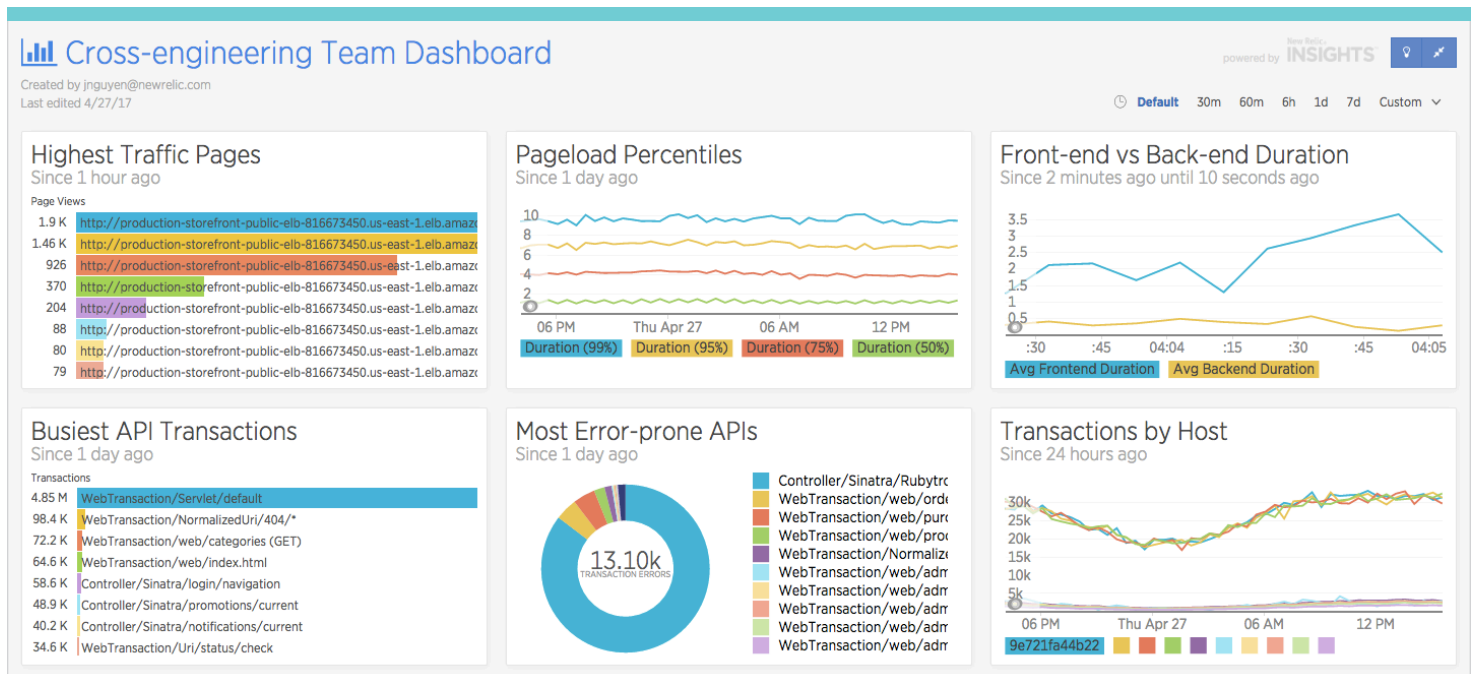
The specifics of delivering digital shopping experiences are unique to different technology stacks, customers, and businesses. Often, there are custom metrics specific to your business that should be included in your performance monitoring.

- **Monitor additional values about your commerce experience.** Use [custom events](#), [metrics](#), and [attributes](#) in [New Relic Insights](#) to monitor additional dimensions. There are several data types to include:

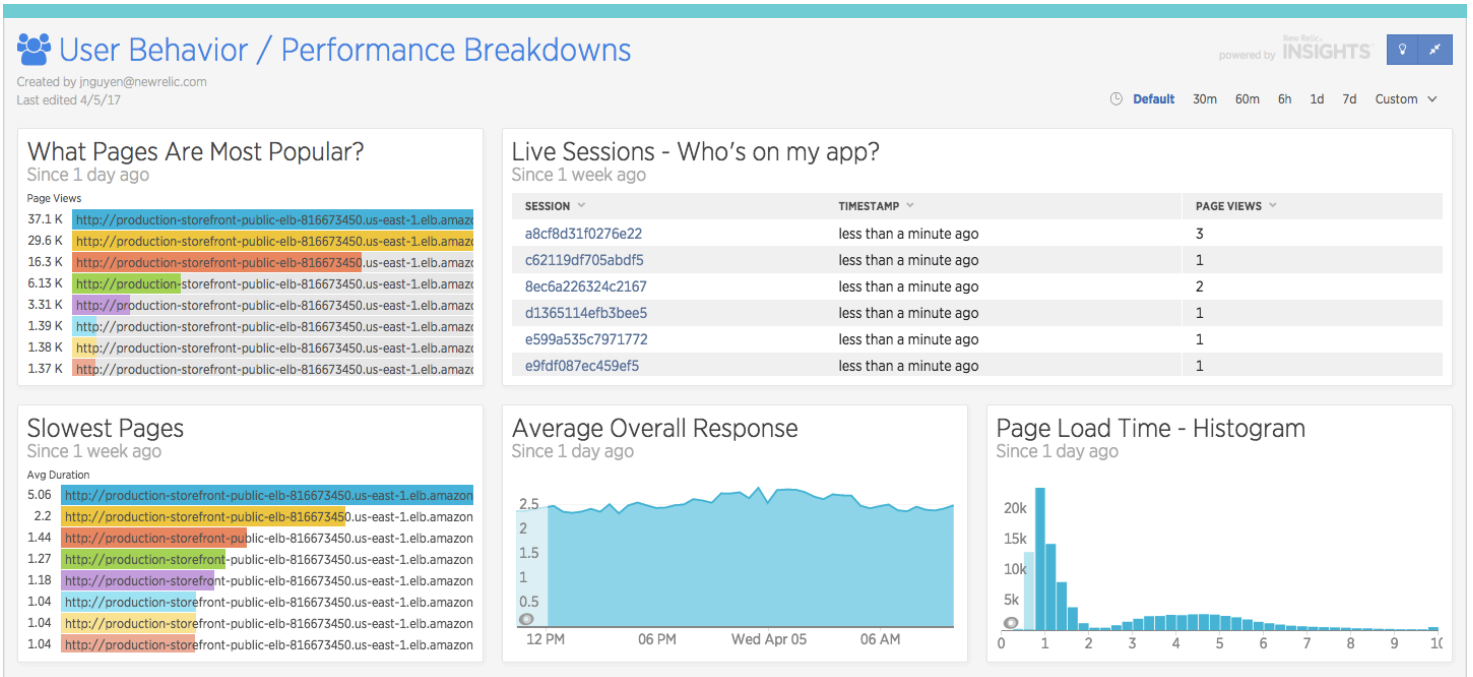
	People	Things	Money	Technology
Data type	account_id, user_channel	product_RFID, rfid_Scan	product_value, user_LTV	deployment_id, release_version, feature_name
Benefit	Pivot performance information around what channel (mobile web, traditional web, etc.) your shoppers are buying on	Track the efficiency of the distribution of the warehouse by the RFID scans for each package	Understand revenue at risk, cost of outages, financial impact	Know the exact code and context to recreate bugs more quickly

Show the impact of technology on the larger business

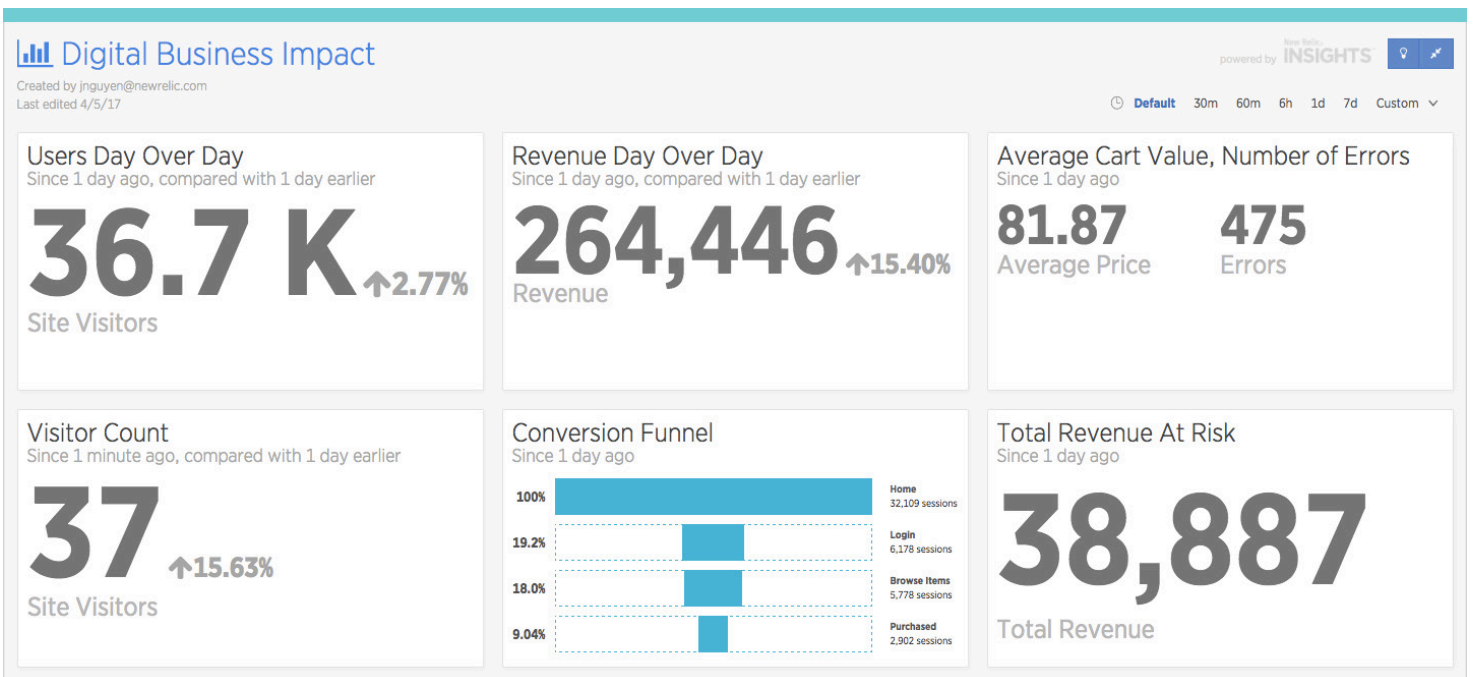
The **quality of the e-commerce experience** delivered by engineering teams matters. The way your website and apps run affects the way your customers engage with them, which in turn drives the overall business. Align different engineering teams together to improve your customers' buying journey, and demonstrate the fruits of their efforts to the broader business, using shared real-time dashboards and reporting. Build these visualizations in New Relic Insights to bring together all the performance data across your stack—as well as across your custom dimensions—to show how it all connects together.



Shared performance dashboards help align frontend, backend, and operations teams



Customer experience dashboards show how performance impacts user engagement



Business dashboards show how the overall digital experience drives business outcomes

Create a customer-centric view of your business

The structure of your organization or the layers of your technology stack can heavily influence the ways you build and run your e-commerce site. However, all of that is irrelevant from the customer perspective—they should never need to care about what’s happening behind the scenes. Make sure everything works together seamlessly and is optimized across the buying journey to ensure shoppers make it all the way through to purchase.

- **Frame performance around customers, not technology.** With a `userId` custom attribute, New Relic Insights can pivot performance data around your customers, not just your technology stack. This customer-centric view focuses the conversation on delivering the best shopping experience, instead of on how your engineering teams are organized.
- **Stack rank your VIP customers with live performance dashboards so you know who they are and the quality of their shopping experiences.** Your most important customers give you the most money and use your products the most. Leveraging a customer-centric view of how your e-commerce site is performing can bring into focus how different functions can better serve your most important shoppers:

HOW DIFFERENT FUNCTIONS CAN BETTER SERVE YOUR MOST IMPORTANT SHOPPERS

Development	Prioritize VIP tickets and reproduce those specific errors more easily with detailed customer data.
Operations	Provide SLA uptime reports to help uphold any contractual sales obligations for VIP accounts.
Product	Tailor the product roadmap and understand feature usage by power users.
Support	Prioritize VIP tickets and proactively reach out to key customers concerning any service issues.
Customer Success	Build deeper relationships with high-value customers leveraging better understanding of their buying journey and impacts of errors experienced along the way.
Marketing	Align marketing initiatives to customer engagement and satisfaction.
Sales	Understand customer engagement with digital channels for better account management.
Executives	Strategically plan around key customer relationships, account growth, and consumption shifts.

Next Steps

We encourage you to apply the best practices outlined above. Start with improving the frontend performance that your shoppers are experiencing. From there, move to the backend and down to the infrastructure. Set up alerts through the process, and track custom events to build out custom dashboards that keep your team working together to address customer and business needs. Finally, make sure to share these dashboards across your extended teams to drive conversations on how the e-commerce experiences you deliver impact the bottom line.

If you need more resources to get the most out of the New Relic Digital Intelligence Platform, we're here to help. [New Relic University](#) and our [Technical Documentation](#) offer deep learning and technical information. For even more guidance, our fee-based [Expert Services](#) team can help you extend New Relic to meet your specific requirements—so you can glean actionable intelligence into your particular customers' experiences and needs.

Finally, remember that creating a great e-commerce experience requires more than just technology. As website and mobile apps become strategic differentiators for companies, they're transforming the roles and responsibilities of the teams that build and maintain them.

You can see that transformation in the rise of [DevOps](#), a multidisciplinary approach well suited to the importance and complexity of building instantly gratifying omnichannel shopping experiences. Data-driven DevOps, along with the agile development practices that typically go along with it, can help multiple parts of the organization work together to more quickly [create and deploy higher-quality, more secure, and more reliable software](#) that delights customers and meets business objectives. And that's what successful e-commerce in the digital era is all about.

New Relic is a leading digital intelligence company, delivering full-stack visibility and analytics to over 40% of the Fortune 100. The New Relic Digital Intelligence Platform provides actionable insights to drive digital business. Companies of all sizes trust New Relic to monitor application and infrastructure performance so they can quickly resolve issues, and improve digital customer experiences. Learn more at newrelic.com.