

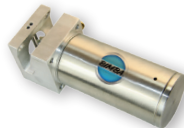
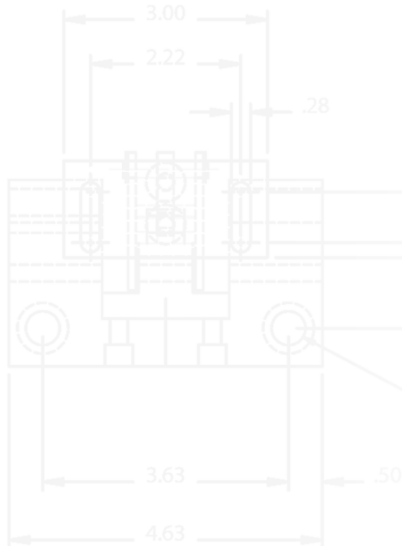


# Product Guide



Setting a new standard for:

- Pneumatic Actuators
- Electric Actuators
- Hydraulic Actuators
- Valves
- Air Preparation
- Fittings & Manifolds
- Sensors & Switches
- Safety & Production
- BimbaBreakthroughs™



# Leaders In Actuation



Thousands of solutions.  
Thousands of configurations.  
Endless applications.



Electric

#### Solutions

- Pneumatic
- Hydraulic
- Electric
- Air Preparation
- Valves
- Safety
- Production
- Motion Control
- Custom Designs

#### Industries & Applications

- Medical
- Food & Packaging
- Agriculture
- Semiconductor
- Aerospace
- Robotics
- Energy
- Window & Door

#### Challenges Addressed

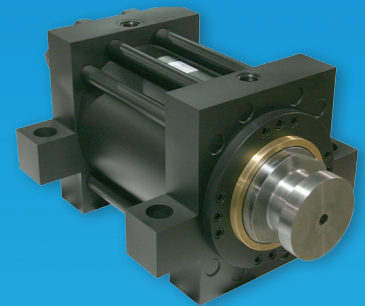
- Space Constraints
- Wash-Down
- Corrosive Environments
- Poor Air Quality
- Heavy Side Loads
- Position Sensing



Air Preparation



Pneumatic



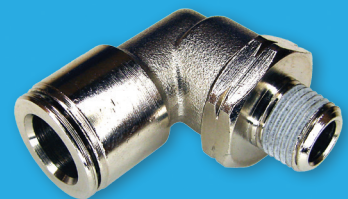
NFPA & Hydraulic



Manifolds



Valves



Fittings

# PNEUMATIC ACTUATORS

Bimba offers an industry leading selection of bore sizes and options for pneumatic actuators. Catalog models can be manufactured in 4 days or less, and are available worldwide through our distribution network.

## Round Line

- 12 non-repairable bore sizes available from 5/16" to 3".
- 6 NFPA mounting styles available for Double-Wall® cylinders.
- USDA -approved repairable stainless steel cylinders available in 1-1/2" to 8" bores.



Double-Wall®



Repairable Stainless Steel

## Rodless

- 3 magnetically coupled models and 1 "band type" model available, in 5/16" to 2" bores.



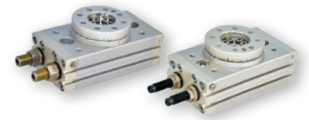
Ultran® Band

## Rotary

- 5 single and double rack models in bore sizes from 9/16" to 2", with standard rotation up to 360°.
- MHRQ extruded body offers 190° max. rotation and is available in 4 sizes.



Rack & Pinion Pneu-Turn®



MFD MHRQ

## Compact

- Bore Sizes: 9/16", 3/4", 1-1/16", 1-1/2", 2", 2-1/2", 3", 4".
- Repairable Flat-I® design available in 8 bore sizes from 9/16" to 3".
- Low profile linear slide actuators available in bore sizes ranging from 6 to 32mm.



Twin Bore



EF-I

Flat-I®

## Position Control

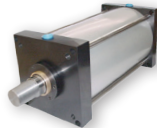
- Closed loop pneumatic control systems and programmable electronic controller for use with position feedback actuators.



Servo Pneumatic Position Control System

## NFPA

- Bore Sizes: 1-1/2", 2", 2-1/2", 3-1/4", 4", 5", 6", 8", 10", 12".
- Models available in tie-rod, round body, or extruded body designs.



TRD TA Series

## ISO

- ISO-6431 available in 6 bore sizes from 32mm up to 100mm.
- ISO-6432 available in 6 bore sizes from 8mm to 25mm.



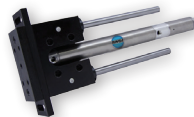
ISO-6431



ISO-6432

## Guided

- Bore Sizes: ET and MFD series from 12 to 63mm, T and TE series from 9/16" to 3".



Guided Thruster

# HYDRAULIC ACTUATORS

TRD builds hydraulic cylinders with a variety of NFPA mounting options, with operating pressures up to 3,000 PSI. Your cylinders ship in 2 to 3 days with our industry leading delivery times.

## Light Duty

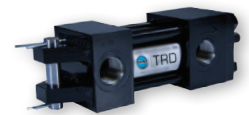
- 2 models from 5/16" up to 3" bores for pressures up to 250 PSI.
- 1-1/16" to 3" bore model in 3 styles for pressures up to 500 PSI.



Bimba 500 Hydraulic

## Heavy Duty

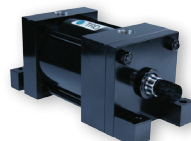
- For applications requiring supply pressures up to 3,000 PSI.
- Bore Sizes: 1-1/2", 2", 2-1/2", 3-1/4", 4", 5", 6", 8".



TRD HH Series

## Medium Duty

- For applications requiring supply pressures up to 1,500 PSI.
- NFPA tie-rod cylinder design available in 1-1/2", 2", 2-1/2", 3-1/4", 4", 5", 6", and 8" bores.



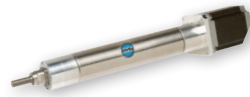
TRD MH Series

# ELECTRIC ACTUATORS

Bimba's electric actuator line provides precise control of motion through both custom and off-the-shelf design. The flexibility and options available are ideal for high precision applications.

## Round Line

- Bore Sizes/Thrust Ranges:  
1-1/2"/up to 75 lbs., 2"/up to 150 lbs., 3"/up to 350 lbs.
- Flexible: Choose from no motor, or AC or DC stepper motors.



Original Line Electric®

## Rodless

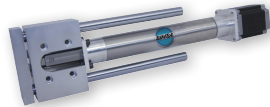
- Ball and lead screws available.
- Choose from no motor, DC motor, or DC step motor.



Ultran® High Load Electric

## Guided

- Capable of side loads up to 1,000 lbs. and moment loads exceeding 3,600 lbs.



Original Line Electric® Thruster

## Motors & Controls

- Stepper & servo motors and drives available.



DRV Series Drives

# VALVES

Acro, Mead and Pneumadyne offer standard pneumatic, binary, solenoid, foot, hand, and/or button valves, and custom valves designed for your specific application.

## Directional Control Valves

- Air pilot operated, mechanically operated, or solenoid operated models available.



MFD 4-way Solenoid Valve

## Specialty Valves

- Products include PTO valves, binary valves, shuttle valves, check valves, hand lever valves, and more.



Push Button Valve

## Flow Control Valves

- 8 series available in zinc die cast or composite bodies for air and hydraulic applications.



FCPM Series

## Solenoid Valves

- Available in 2, 3, or 4-way, 2 or 3-positions, normally opened or normally closed.



Solenoid Valve

## Pneumatic Pinch Valves

- Available in normally-open or normally-closed default states.
- Supports tube sizing in the ranges of 0.125"–1.60" OD and available in N/O or N/C default states.



Pneumatic Pinch Valves

## Solenoid Pinch Valves

- Supports tube sizing in the ranges of 0.125"–0.375" OD and available 2-way N/O or N/C, or dual 3-way N/O-N/C states.



Versagrip® Solenoid Pinch Valves

## Manual Valves

- Direct Acting hand lever valves available with either 4-port, 2-position or 4-port, 3-position.



M4HV Series

## 2-Hand Anti-Tiedown

- Designed to provide safer operation of air presses, drill fixtures, clamping fixtures, cylinders, valves, or light assembly equipment.
- Washdown and low stress models available.



2-Hand Anti-Tiedown Control Valve

## AIR PREPARATION

Bimba and MFD air preparation equipment feature the standard Filter, Regulator, Lubricator, and Assembled Combinations (FRLs). They are available from 1/8" up to 1-1/2" NPT. Accessories include mounting hardware, pressure gauges, shut-off valves, soft-start valves, and more.

### Filters

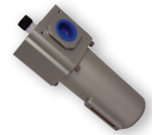
- Models include general purpose air filters, oil removal filters, or vapor removal filters.



Air Filter

### Lubricators

- Transparent polycarbonate or metal bowls are available.



Air Lubricator

### Regulators

- Pressure range: 8 to 300 PSIG.



Pressure Regulator

### Combination Units

- Integrated design combines filter and regulator into 1 product.



FRL-Combination

## FITTINGS & MANIFOLDS

Pneumadyne's fittings and manifolds provide essential links between components in pneumatic systems. Simply thread fittings into the manifold ports to produce an organized method of supplying multiple lines from a single source.

### Push-to-Connect

- Connectors, elbows and tees for 1/8" to 3/8" tube ODs.



Elbow Fitting

### Threaded Fittings

- Adapters, bulkheads, couplings, elbows, tees, and plugs are available.



Threaded Tee

### Manifolds

- Precision machined to offer a variety of materials and sizes/configurations, from 2 to 10 stations.



Stainless Steel Manifold

### Barb Fittings

- Coupling, cross, elbow and tee configurations available.



Straight Connector

## SENSORS & SWITCHES

Bimba switches offer 4 mounting types and are used with our cylinders for position sensing applications. Our IntelliSense® platform combines sensors, cylinders, and software to deliver real-time performance data for standard pneumatic devices.

### Band Mounted Switches

- Low current DC, heavy duty and LED models available.



Band Mounted Switch

### IntelliSense® Kits

- 3 styles available: Basic, Starter, and Data Starter.
- English and Metric fitting options.



IntelliSense® Basic Kit

### Track Mounted Switches

- Operating voltages ranging from 5-240V AC or DC.



Track Mounted Switch

### Connector Cables

- M8 quick connect cables with straight or right-angle options available.



Connector Cable

### Tie-Rod Mounted Switches

- Available as sourcing, sinking, or reed.



Tie-Rod Mounted Switch

### IntelliSense® Data Gateway

- Remote monitoring for IntelliSense®.
- 100+ GB of data logging.



IntelliSense® Data Gateway

### Threaded Sensor

- End of stroke inductive proximity and magnetic reed switches available.



Threaded Sensor

# SOFTWARE

Bimba's Software Suite provides a complete suite of intuitive software solutions.

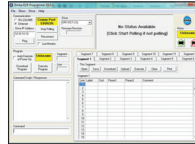
## IQ® Command

- Terminal emulator used to test and troubleshoot individual or groups of programming demands.



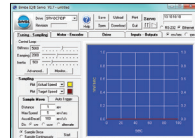
## IQ® Programmer

- Configure stepper and servo motion profiles according to the application requirements.



## IQ® Servo

- Used to tune your Bimba servo drive for optimum performance.



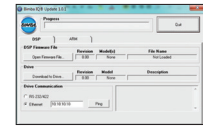
## IQ® Stepper

- Configure stepper motor and drive hardware.



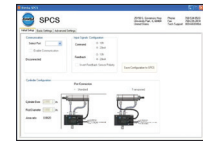
## IQ® Update

- Used to update stepper and servo drive firmware and keep your investment secure.



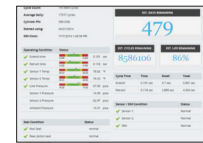
## Servo Pneumatic Control System (SPCS)

- Provides closed loop pneumatic proportional control for all Bimba position feedback actuators.



## IntelliSense®

- Collect data and monitor machinery remotely, from multiple locations.



# SAFETY & PRODUCTION

The Bimba enterprise of companies is committed to a safe workplace. This commitment is demonstrated through its product offerings that help ensure worker safety in all of our customers' facilities.

- **ACV Series PTO Valves**
- **Air Reservoir**
- **Boosters/Intensifiers**
- **Lockout/Tagout Valves**
- **Air Impact Hammer**
- **Air/Oil Tanks**
- **Collet Fixtures**
- **Presses Panel Mount Valves**



ACV Series PTO Valve



Air-to-Air Booster



Pneumatic Isolation Valve



Bench Top Air Press

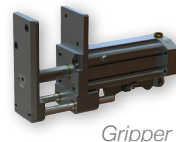
# BIMBABREAKTHROUGHS™

Bimba's Design Center capabilities have been one of our core characteristics resulting in innovation for our customers. Innovation for one customer sometimes provides us with a breakthrough that all our customers can leverage. We call these BimbaBreakthroughs™.

- **Rate Controls**
- **Grippers**
- **Hand Tools**
- **Pumps**
- **Special Intensifiers**



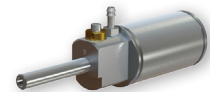
Hand Pump



Gripper



Rate Control



Hand Tool

Your stocking distributor is:



**Bimba Manufacturing Headquarters**

P.O. Box 68 Monee, Illinois 60449-0068

Phone: 708-534-8544 Toll Free: 800-44-BIMBA Fax: 708-235-2014

Email: [cs@bimba.com](mailto:cs@bimba.com) [www.bimba.com](http://www.bimba.com)

**BIMBA BRANDS | ACRO | MEAD | MFD | PNEUMADYNE | TRD**

PNEUMATIC • ELECTRIC • HYDRAULIC ACTUATORS FITTINGS — MANIFOLDS — VALVES — AIR PREPARATION — SAFETY & PRODUCTION



Worldwide distribution means there is a professional stocking  
Bimba distributor nearby ready to service your needs.



BIMBA IS AN ISO 9001 COMPANY