

Supplement of Biogeosciences, 13, 5021–5041, 2016  
<http://www.biogeosciences.net/13/5021/2016/>  
doi:10.5194/bg-13-5021-2016-supplement  
© Author(s) 2016. CC Attribution 3.0 License.



Biogeosciences  Open Access

*Supplement of*

## **Biogeochemical modeling of CO<sub>2</sub> and CH<sub>4</sub> production in anoxic Arctic soil microcosms**

**G. Tang et al.**

*Correspondence to:* Guoping Tang (guopingtangva@gmail.com)

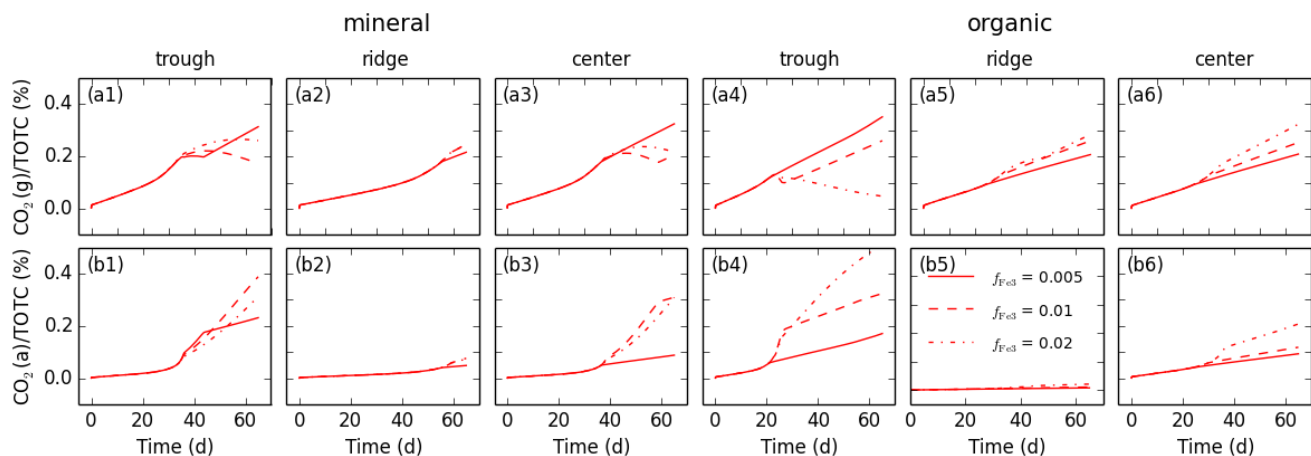
The copyright of individual parts of the supplement might differ from the CC-BY 3.0 licence.

Table S1. Additional experimental parameter values summarized from (Herndon et al., 2015; Roy Chowdhury et al., 2015) (TOTC = total organic carbon; WEOC = water extractable organic carbon; Acids = organic acids,  $f(\text{pH})$  = pH factor).

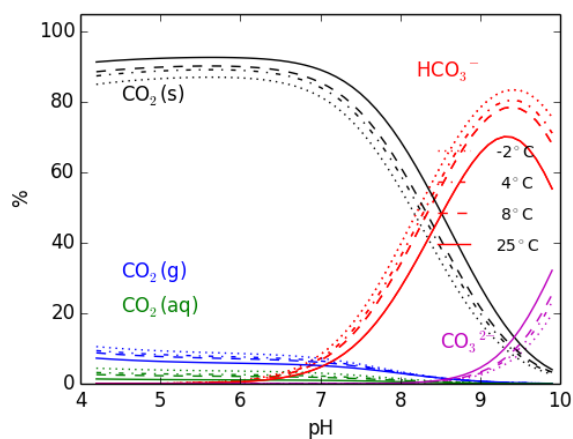
Location	Horizon	Formate (mgC)	Acetate (mgC)	Propionate (mgC)	TOTC/d wt Soil	WEOC /TOTC	Acids/WE OC	$f(\text{pH})$
Center	Oa	0.3162	1.7185	0.0445	38.35%	1.77%	21.69%	0.486
	Bgh	0.0198	0.3524	0.0213	13.78%	0.31%	10.23%	0.384
Ridge	Oe	0.0012	0.0046	0.0104	38.89%	0.54%	0.24%	0.601
	Bh	0.0270	0.3420	0.0399	14.65%	0.26%	12.46%	0.241
Trough	Oe	0.0016	0.0062	0.0140	20.55%	0.38%	0.66%	0.614
	Bh/ice	0.0204	0.2617	0.0104	7.99%	0.30%	14.53%	0.445

Table S2. Model parameter values for base scenario

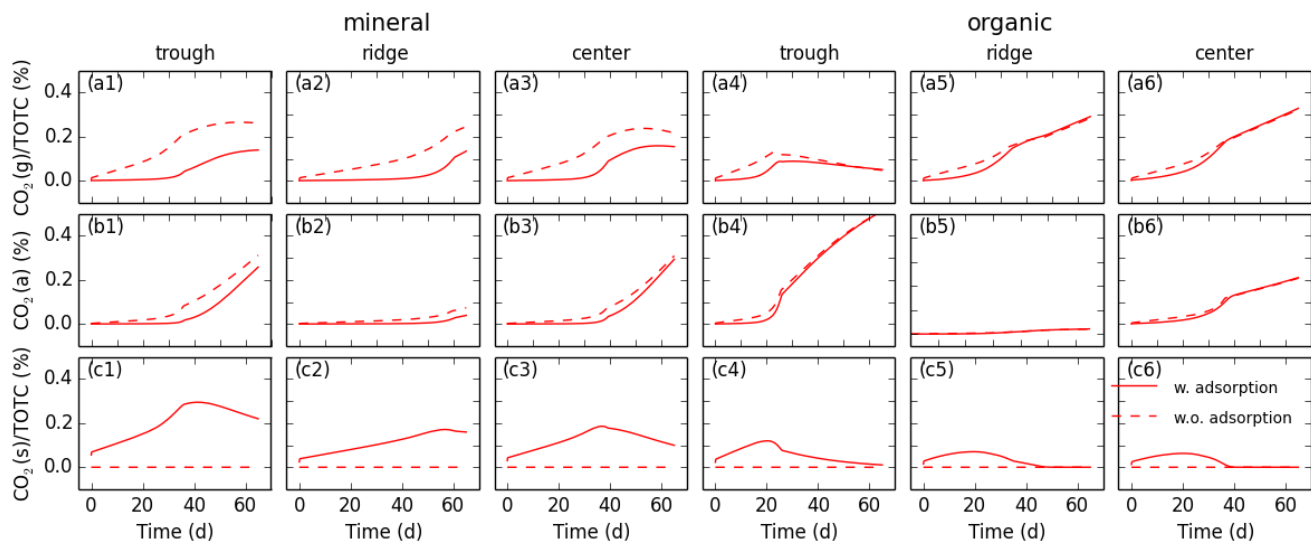
Symbol	Value	Description
$f_{\text{LabileDOC}}$	0.0005	Initial fraction of LabileC in total organic carbon
$f_{\text{SOM1}}$	0.01	Initial fraction of SOM1 in total organic carbon
$f_{\text{SOM2}}$	0.02	Initial fraction of SOM2 in total organic carbon
$f_{\text{SOM3}}$	0.1	Initial fraction of SOM3 in total organic carbon
$F_{\text{FeRB}}$	$2 \times 10^{-6}$	Initial fraction of Fe reducers in total organic carbon
$F_{\text{Mega}}$	$10^{-6}$	Initial fraction of acetoclastic methanogens in total organic carbon
$F_{\text{MegH}}$	$10^{-6}$	Initial fraction of hydrogenotrophic methanogens in total organic carbon
$f_{\text{Fe3}}$	0.0025	Initial Fe(III) as a fraction of soil dry weight
$s_{\text{Labile}}$	0.4	Fraction of the original CLM-CN respiration factor goes through labile pool.



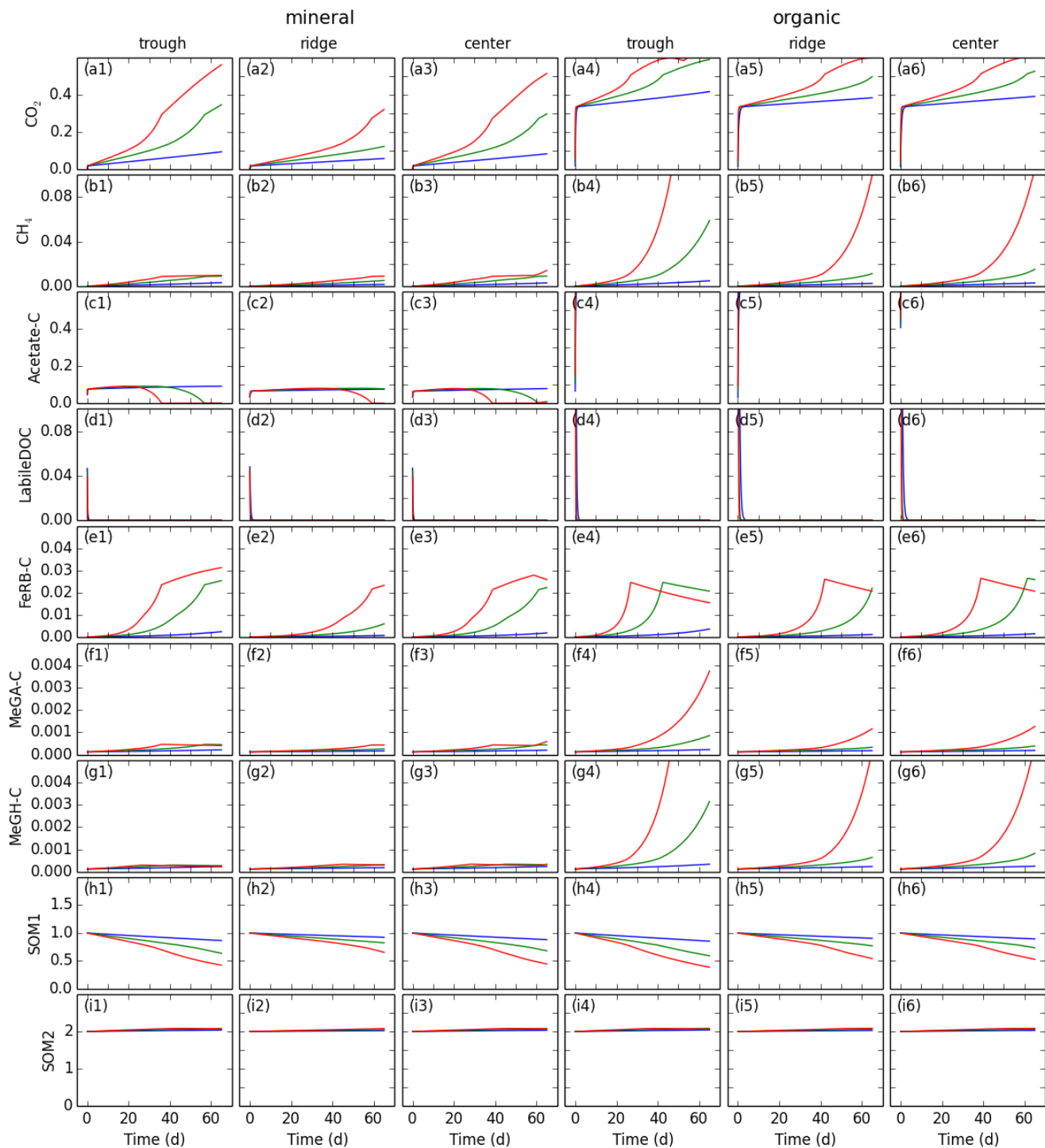
5 **Figure S1:** Calculated partition of  $\text{CO}_2$  in gas and aqueous phases as a percentage of initial TOTC with different  $f_{\text{Fe}3}$  values. The results correspond to Fig. 2 for temperature  $8^\circ\text{C}$ . With increasing  $f_{\text{Fe}3}$ , the pH increases at the late times, as does the  $\text{CO}_2$  solubility. See Figure 2 caption for more information.



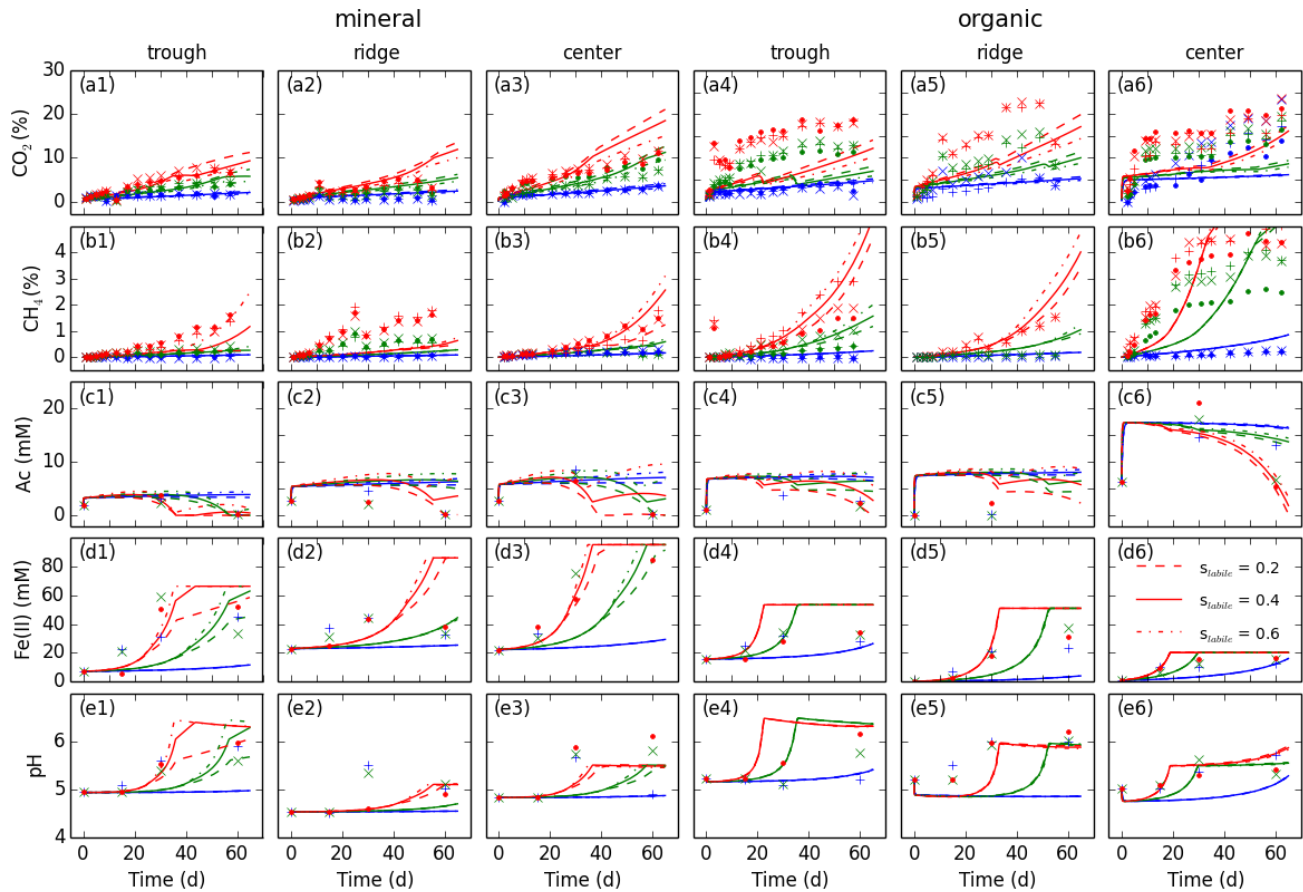
10 **Figure S2:** Adding  $1\text{ mmol Fe}(\text{OH})_{3a}$  into the numerical experiments shown in Fig. 3, the gas-phase fraction is decreased at low pH values as the sorbed phase dominates. See Fig. 3 caption for more information.



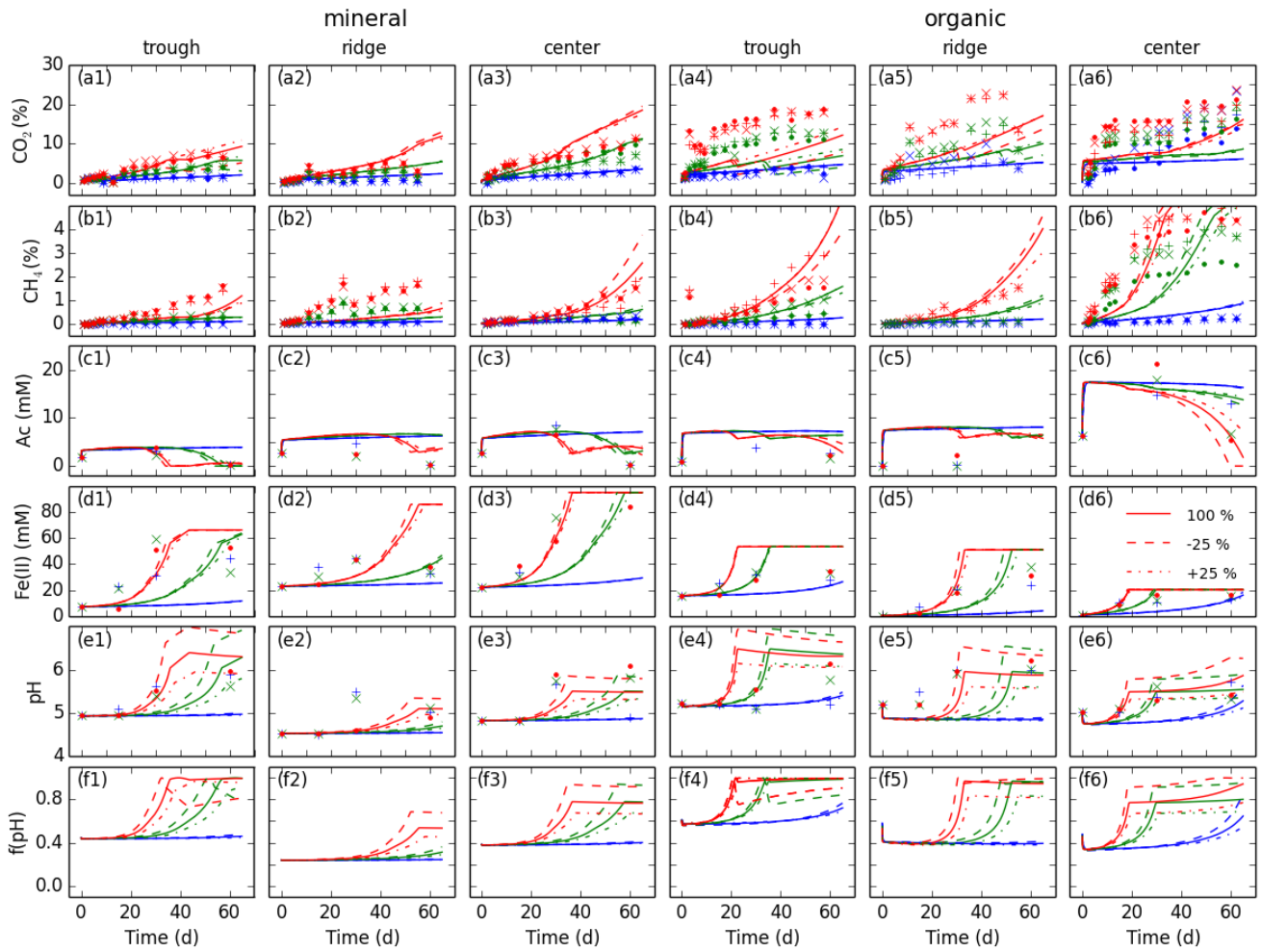
**Figure S3: Impact of adsorption of  $\text{CO}_2$  to ferric oxide surfaces on the distribution among gas, aqueous and solid phases. The gas phase concentration is predicted to be buffered by adsorption at the beginning. At late times, reduction and dissolution of  $\text{Fe}(\text{OH})_{3\text{a}}$  sites may release  $\text{CO}_2$ . See caption for Fig. 2 and Fig. S1 for more information.**



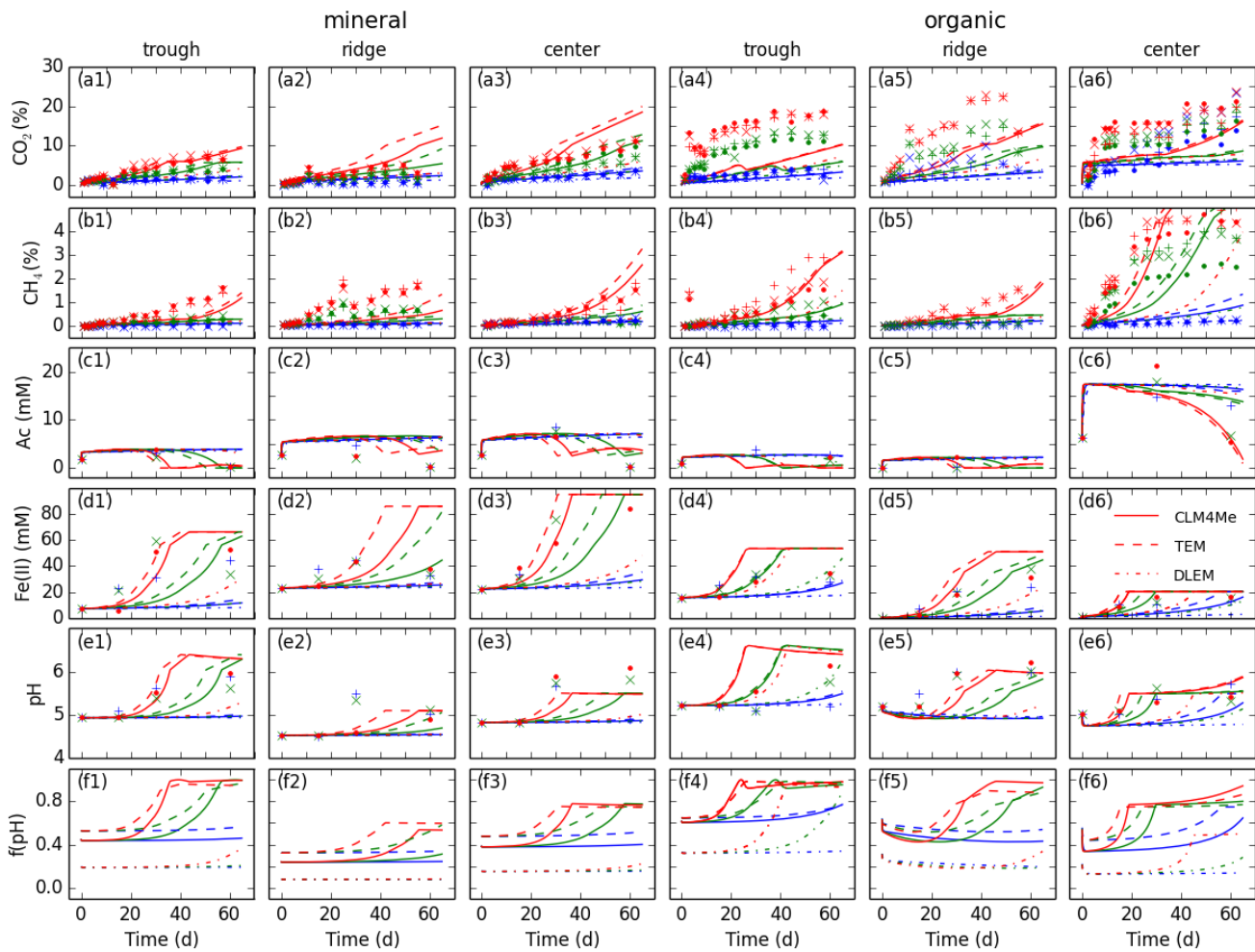
**Figure S4: Partition of carbon among various organic pools. a, and b are for total  $\text{CO}_2$  and  $\text{CH}_4$  in aqueous and gas phases. The recalcitrant pools (SOM3 and SOM4) are the major fractions of soil organic carbon but have a slow turnover time relative to the experiment duration, therefore, not shown. See Fig.2 caption for more description about the model and experimental parameters.**



5 **Figure S5: Impact of indirect respiration fraction ( $s_{liable}$ ) on predictions: less direct respiration means more simple substrates for iron reduction and methanogenesis . See Fig.2 caption for more description about the model and experimental parameters.**



**Figure S6: Impact of specified organic matter in WHAM on predictions: more organic matter means more pH buffer. See Fig.2 caption for more description about the model and experimental parameters.**



**Figure S7: Comparison of the impact of different pH response functions (CLM4Me, TEM, and DLEM) on predictions. pH response function can be a substantial source of prediction uncertainty. See Fig.2 caption for more description about the model and experimental parameters.**



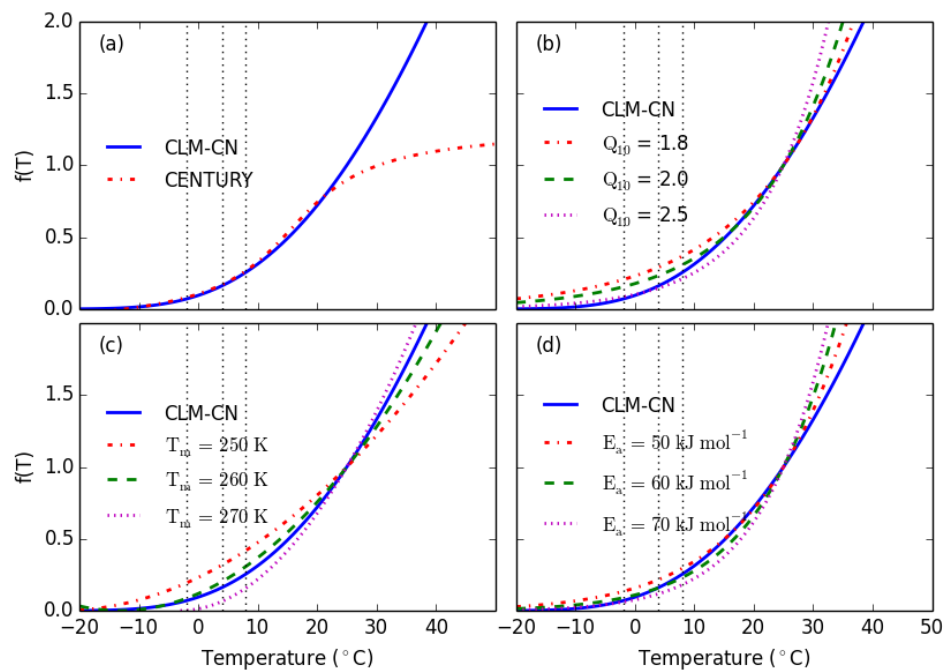
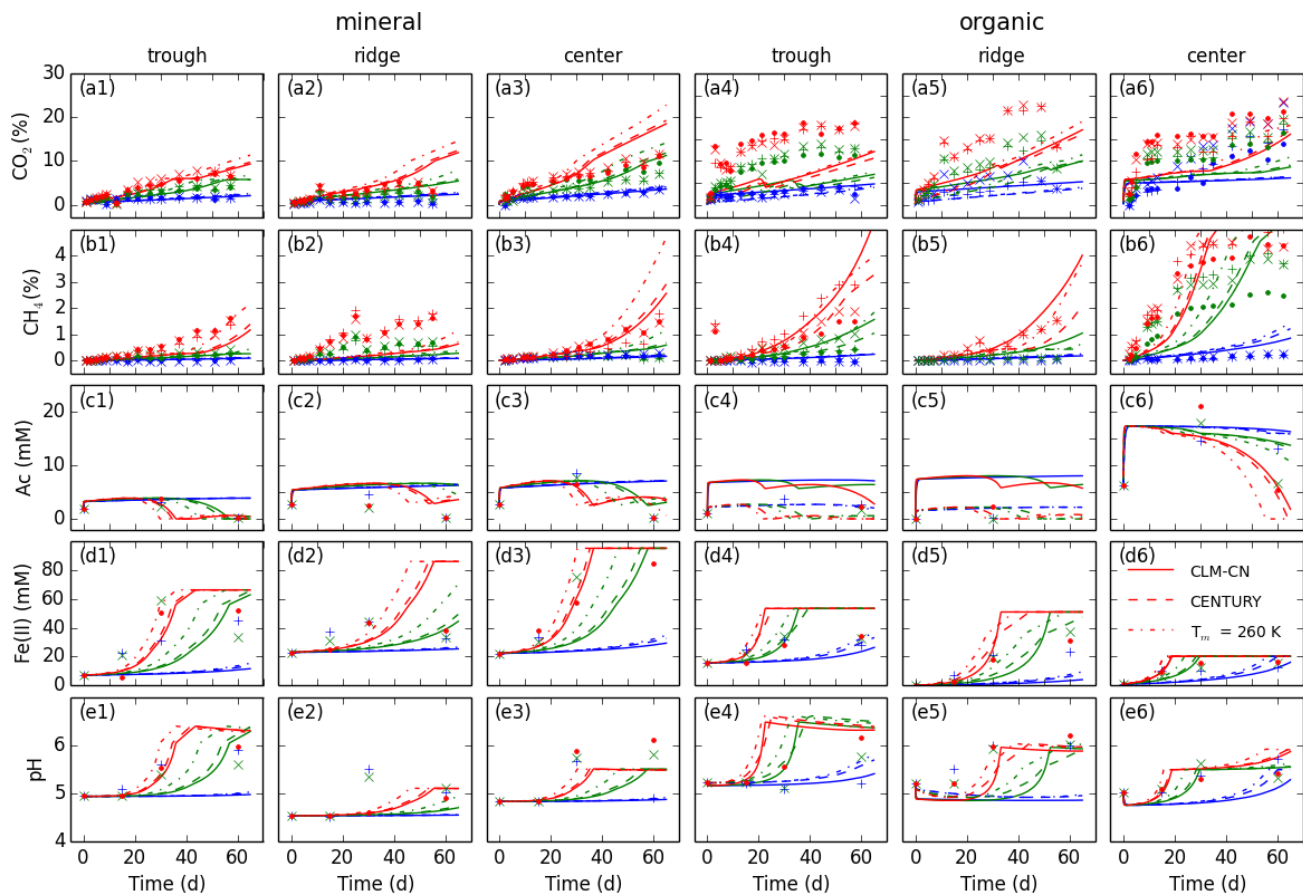
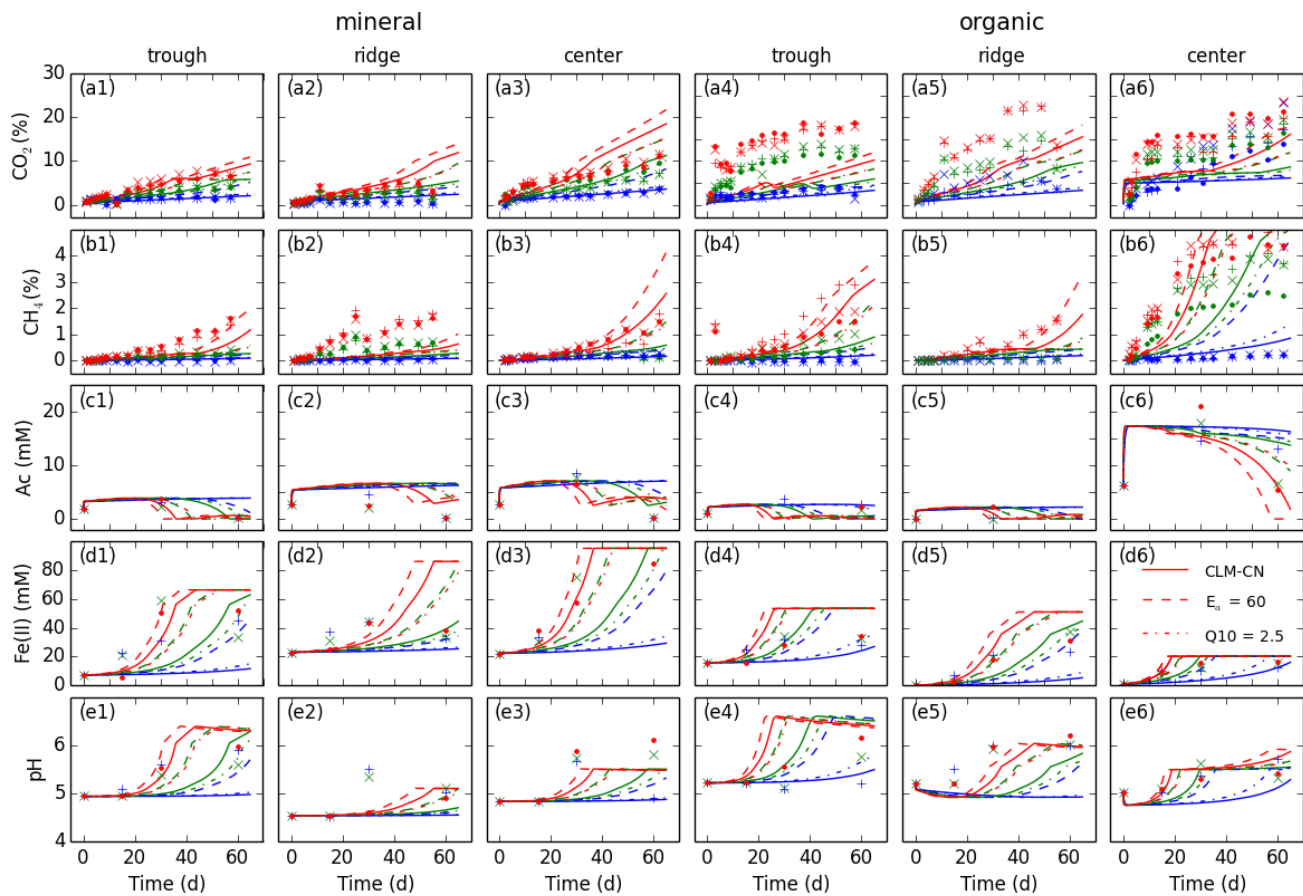


Figure S8: Fig. 7 with arithmetic vertical scale.

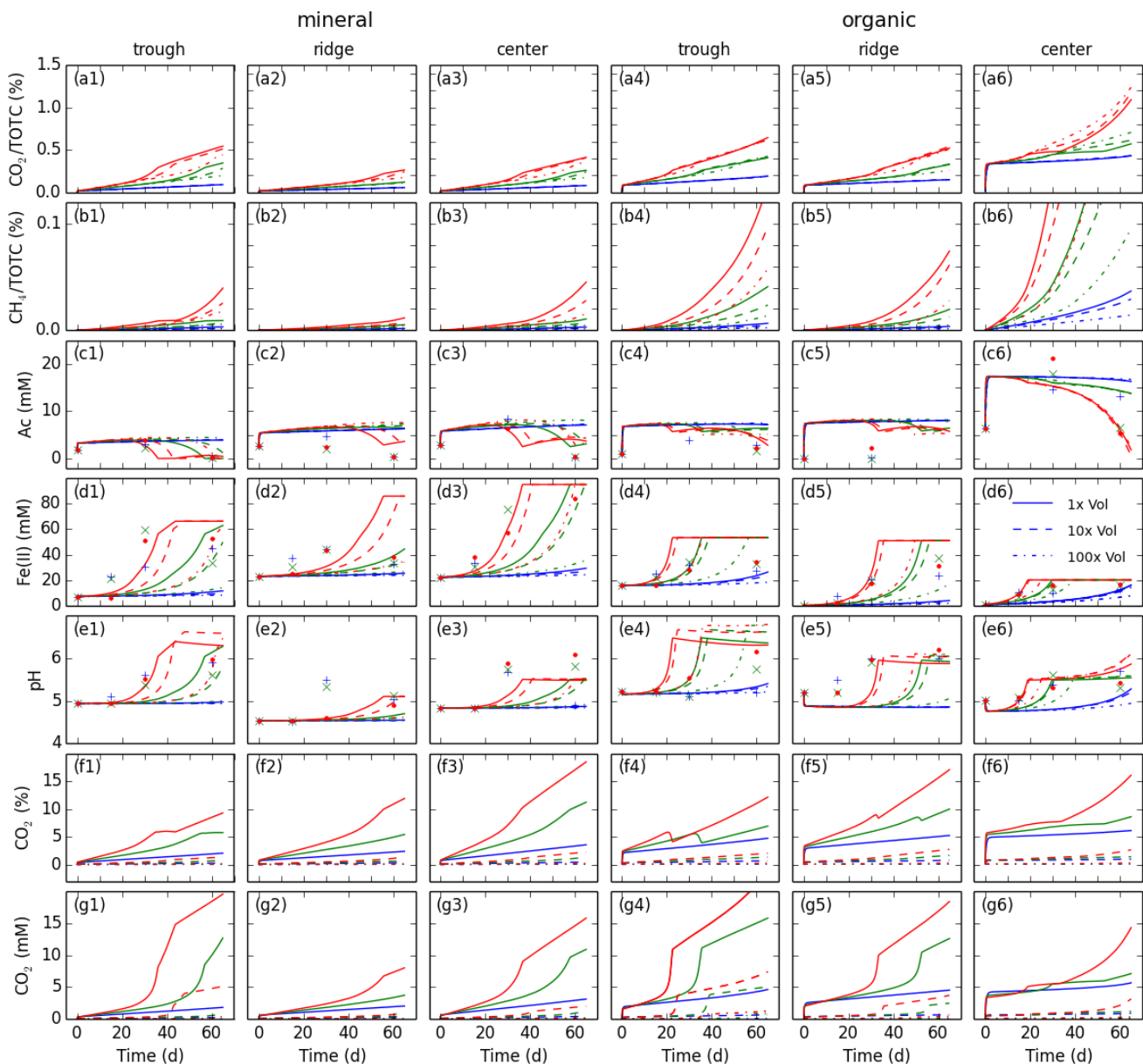


**Figure S9: Comparison of impact of different temperature response functions (CLM-CN, CENTURY, Ratkowsky Equation with  $T_m = 260$ ) on predictions. Predictions are sensitive to temperature response function, which can introduce large prediction uncertainty. See Fig.2 caption for more description about the model and experimental parameters.**



**Figure S10: Comparison of impact of different temperature response functions (CLM-CN, Arrhenius equation ( $E_a$ ),  $Q_{10}$  Equation) on predictions. Predictions are sensitive to temperature response function, which can introduce large prediction uncertainty. See Fig.2 caption for more description about the model and experimental parameters.**

5



**Figure S11: Impact of headspace volume on predictions: increase in headspace volume results in decrease in headspace (f1-6) and aqueous (g1-6)  $\text{CO}_2$  concentration, slower pH increase and biogeochemical reaction rates, and generally less  $\text{CO}_2$  and  $\text{CH}_4$  production prediction. As an exception, predicted  $\text{CO}_2$  production is increases with increasing headspace volume for the center organic soils. The impact is not linear as the underlying biogeochemical processes are nonlinear. TOTC = initial total organic carbon. Ac = organic acids as acetate. See Fig.2 caption for more description about the model and experimental parameters.**

5

## References

- Herndon, E. M., Mann, B. F., Chowdhury, T. R., Yang, Z., Wulfschleger, S. D., Graham, D., Liang, L., and Gu, B.: Pathways of anaerobic organic matter decomposition in tundra soils from Barrow, Alaska, *Journal of Geophysical Research: Biogeosciences*, n/a-n/a, 10.1002/2015JG003147, 2015.
- 5 Roy Chowdhury, T., Herndon, E. M., Phelps, T. J., Elias, D. A., Gu, B., Liang, L., Wulfschleger, S. D., and Graham, D. E.: Stoichiometry and temperature sensitivity of methanogenesis and CO<sub>2</sub> production from saturated polygonal tundra in Barrow, Alaska, *Global Change Biology*, 21, 722-737, 10.1111/gcb.12762, 2015.