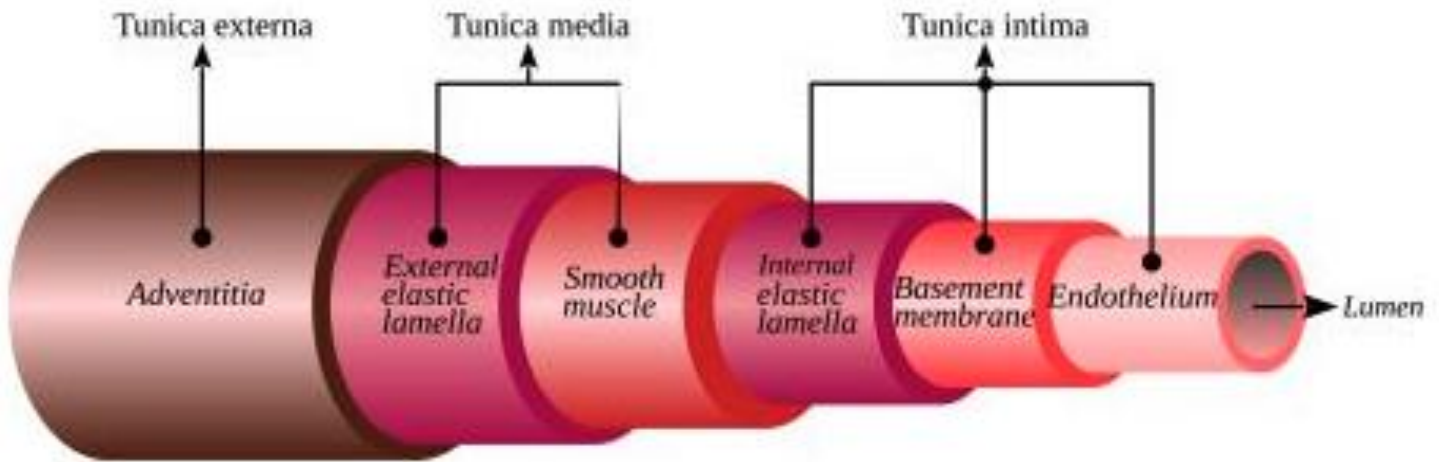


Biology 202: Vessels & Circulation in The Cardiovascular System

1) Label the image below.

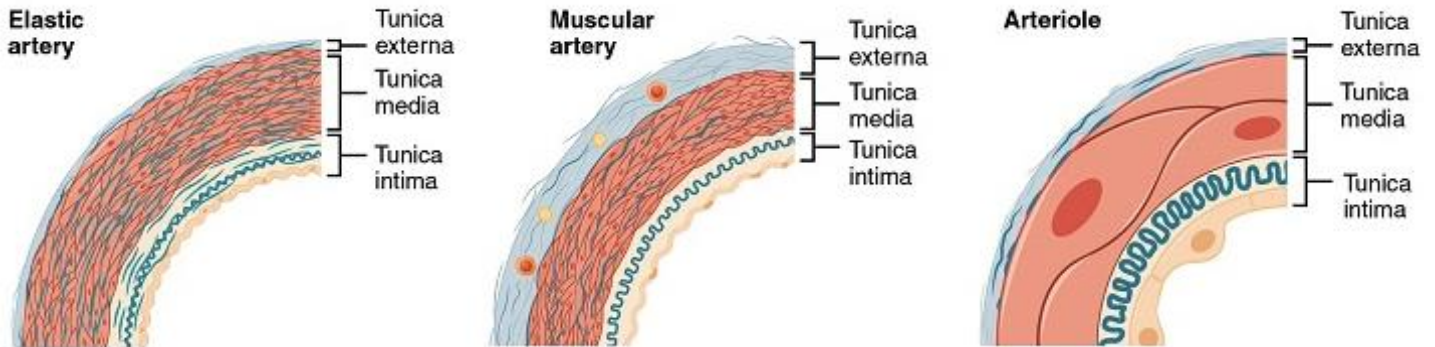
- Tunica externa
- Adventitia
- Basement membrane
- External elastic lamella
- Smooth muscle
- Internal elastic lamella
- Tunica media
- Tunica intima
- Lumen
- Endothelium



Source Lesson: Blood Vessels: Structural Components & Angiogenesis

2) Label the diagram below. Some terms will be used more than once.

- Tunica media
- Arteriole
- Elastic artery
- Tunica externa
- Tunica intima
- Muscular artery

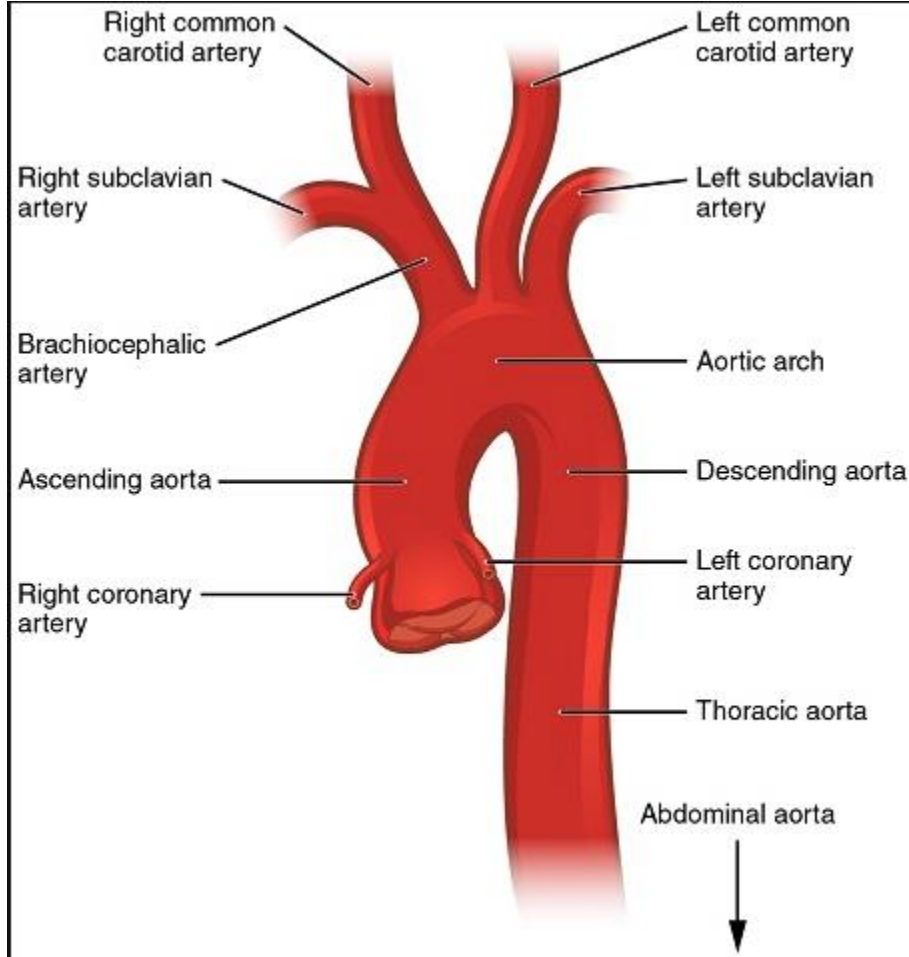


Source Lesson: Types of Arteries: Elastic, Muscular & Arterioles

3) Label the image of the aorta below.

Aortic arch
Right common carotid artery
Left common carotid artery
Brachiocephalic artery
Ascending aorta
Left coronary artery

Thoracic aorta
Right coronary artery
Right subclavian artery
Left subclavian artery
Descending aorta
Abdominal aorta



Source Lesson: Major Arteries of the Body

4) Label the arteries of the head and neck.

Vertebral

Occipital

Facial

Maxillary

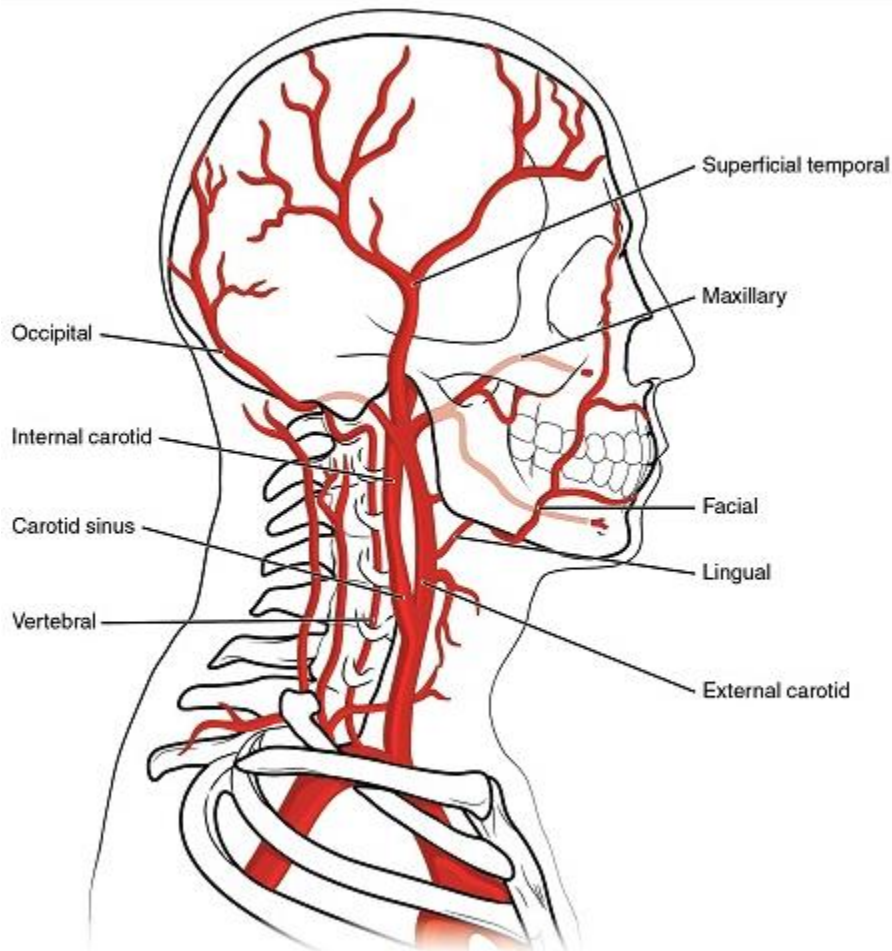
Internal carotid

Superficial temporal

Carotid sinus

External carotid

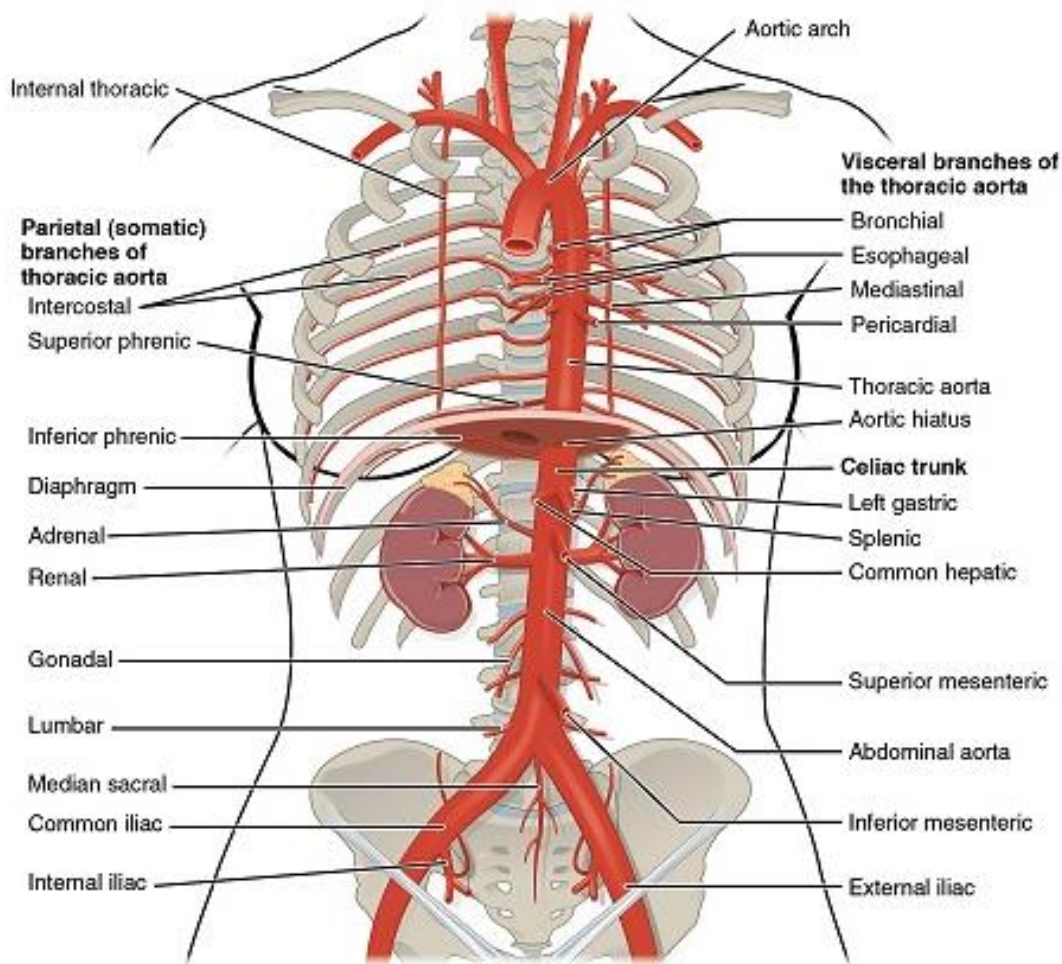
Lingual



Source Lesson: Major Arteries of the Body

5) Label the arteries of the thoracic region.

- | | | |
|---------------------|-------------------------------------|-------------------------------------|
| Inferior phrenic | Internal thoracic | Diaphragm |
| Aortic arch | Adrenal | Gonadal |
| Celiac trunk | Abdominal aorta | Splenic |
| Renal | Bronchial | Parietal branches of thoracic aorta |
| Intercostal | Lumbar | Esophageal |
| Median sacral | Mediastinal | Superior phrenic |
| Superior mesenteric | Inferior mesenteric | External iliac |
| Common iliac | Visceral branches of thoracic aorta | Pericardial |
| Internal iliac | Thoracic aorta | Left gastric |
| Aortic hiatus | Common hepatic | |



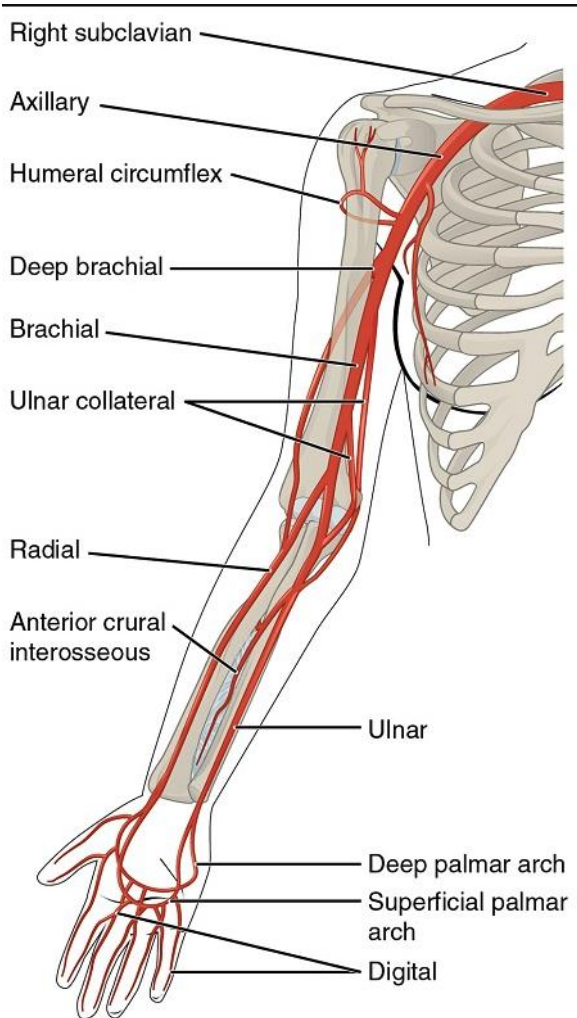
Source Lesson: Major Arteries of the Body

6) Label the arteries of the upper limb.

Digital
Numeral circumflex
Brachial
Ulnar collateral

Ulnar
Superficial palmar arch
Deep palmar arch
Anterior crural interosseous

Right subclavian
Axillary
Deep brachial
Radial



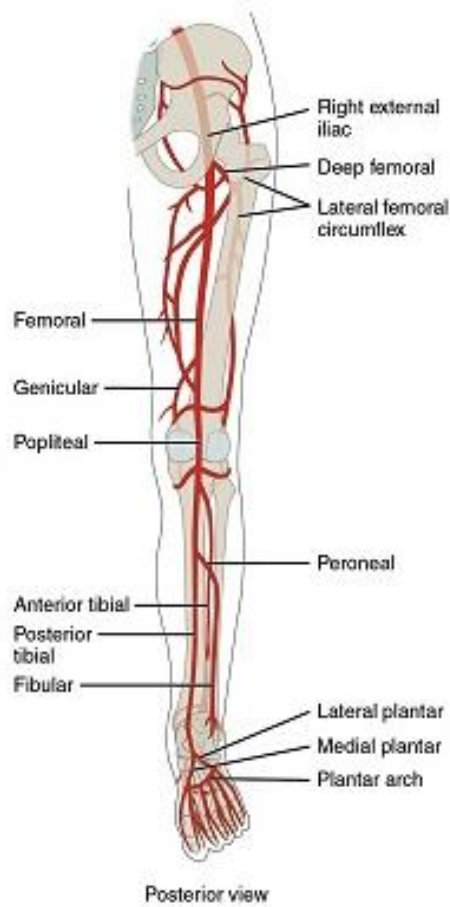
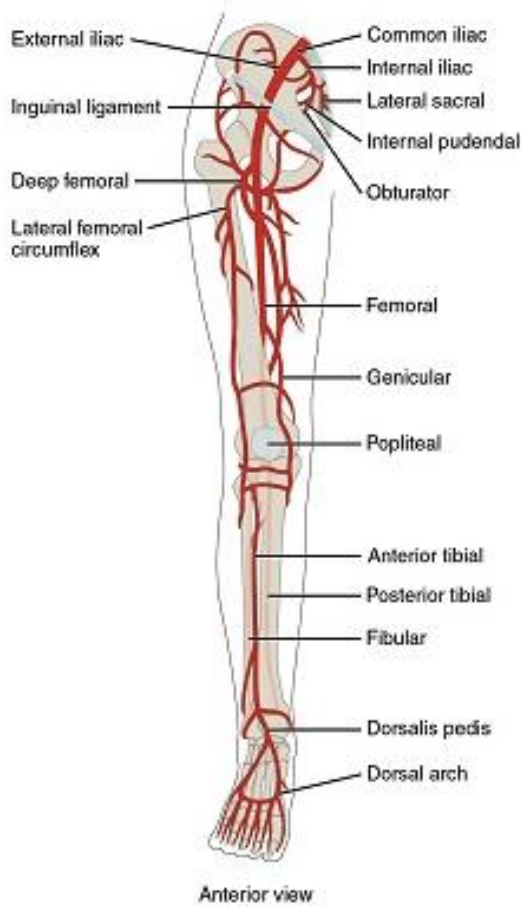
Source Lesson: Major Arteries of the Body

7) Label the arteries of the lower limb. Some terms may be used more than once.

Common iliac
 Inguinal ligament
 Lateral sacral
 Posterior tibial
 Dorsal arch
 Medial plantar
 Fibular
 Anterior tibial
 Anterior labial

External iliac
 Internal iliac
 Dorsalis pedis
 Right external iliac
 Lateral femoral circumflex
 Femoral
 Lateral plantar
 Popliteal

Posterior tibial
 Fibular
 Deep femoral
 Genicular
 Oblutak
 Plantar arch
 Genicular
 Peroneal



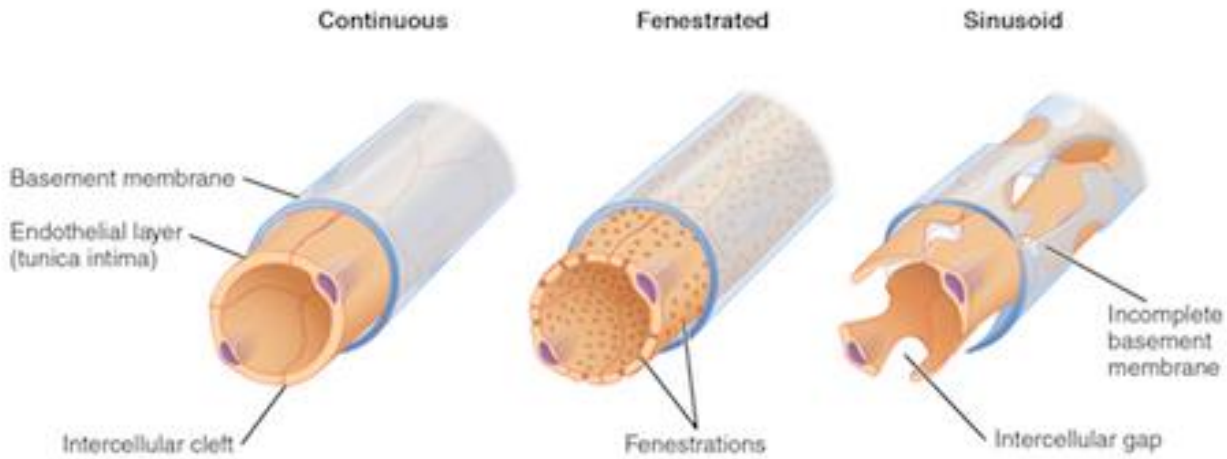
Source Lesson: Major Arteries of the Body

8) Label the image below.

Basement membrane
Fenestrated
Incomplete basement membrane

Continuous
Intercellular gap
Intercellular cleft

Fenestrations
Endothelial layer
Sinusoid



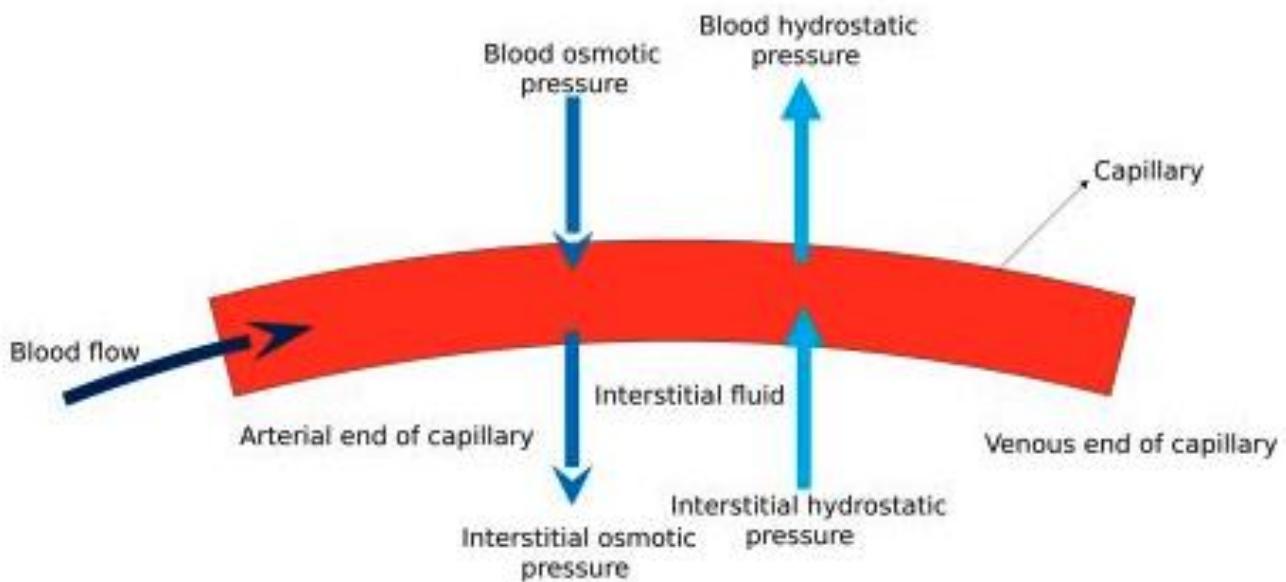
Source Lesson: Types of Capillaries: Continuous, Fenestrated & Sinusoidal

9) Label the image below.

Arterial end of capillary
Interstitial fluid
Interstitial osmotic pressure

Blood flow
Blood osmotic pressure
Venous end of capillary

Blood hydrostatic pressure
Capillary
Interstitial hydrostatic pressure



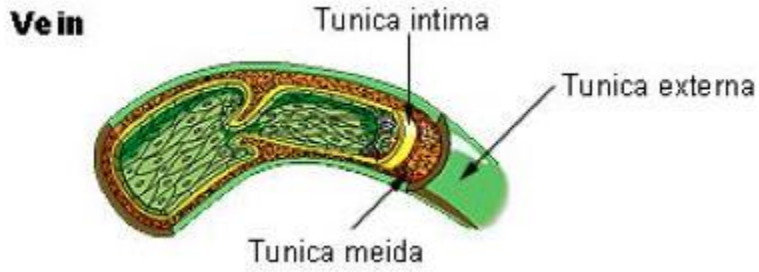
Source Lesson: Capillary Exchange: Process & Properties

10) Label the three layers present in veins and venules.

Tunica externa

Tunica media

Tunica intima



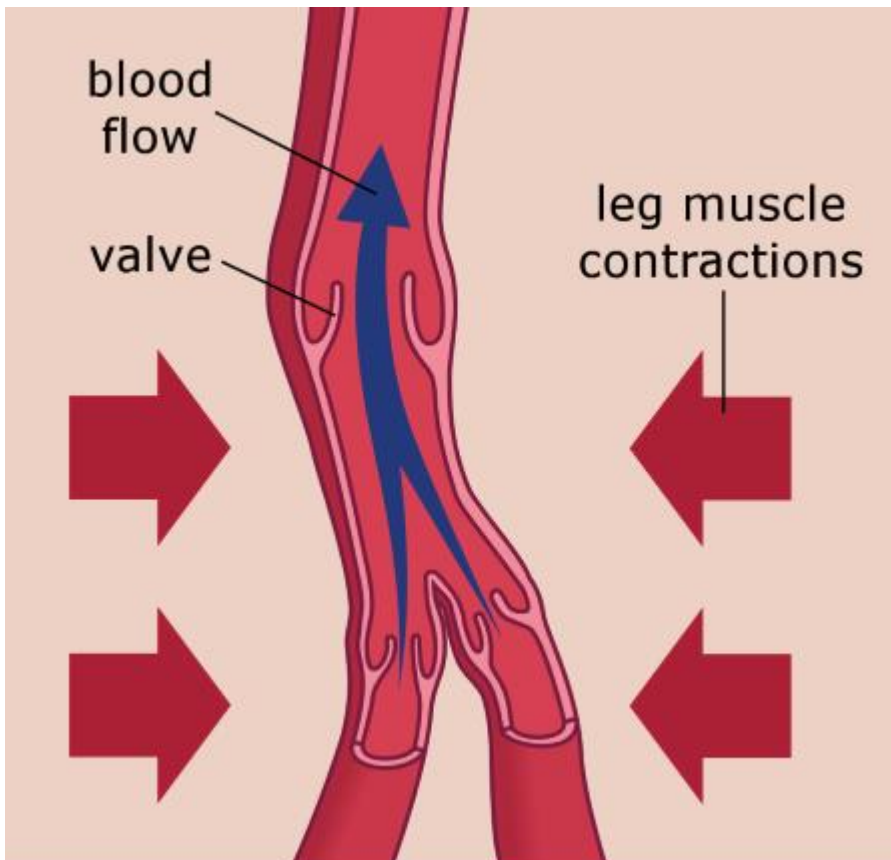
Source Lesson: Types of Veins & Venous Return

11) Label the image below.

Valve

Blood flow

Leg muscle contractions



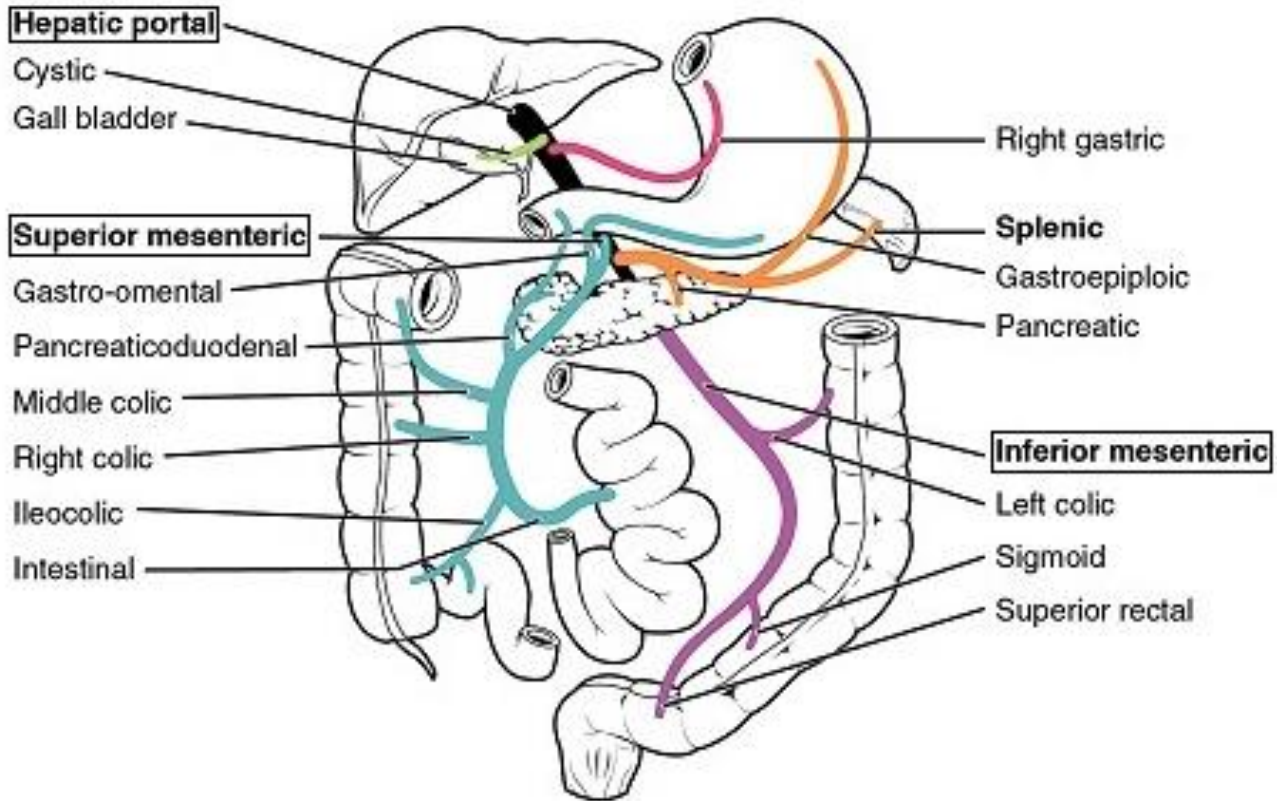
Source Lesson: Types of Veins & Venous Return

12) Label the major digestive organs of the hepatic portal system.

Gastro-omental
Cystic
Sigmoid
Right colic
Ileocolic
Pancreatic

Hepatic portal
Middle colic
Intestinal
Right gastric
Superior mesenteric
Inferior mesenteric

Pancreaticoduodenal
Left colic
Superior rectal
Gallbladder
Splenic
Gastroepiploic



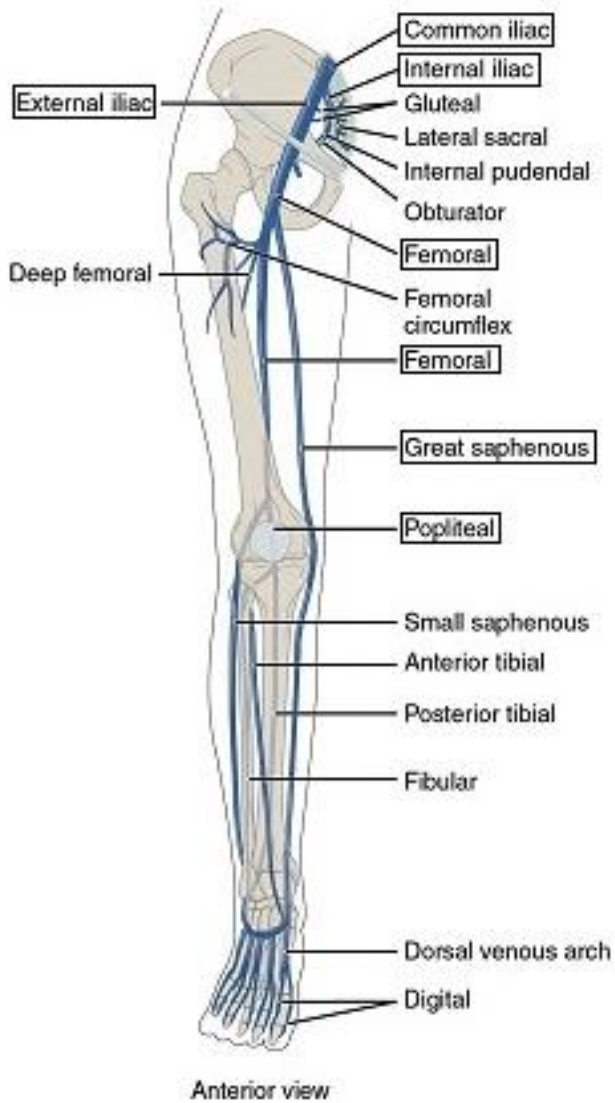
Source Lesson: Major Veins of the Body

13) Label the veins of the leg. Some terms may be used more than once.

External iliac
Lateral sacral
Posterior tibial
Anterior tibial
Femoral
Deep femoral

Digital
Obturator
Small saphenous
Gluteal
Internal iliac
Popliteal

Internal pudendal
Common iliac
Fibular
Dorsal venous arch
Great saphenous
Femoral circumflex



Source Lesson: Major Veins of the Body

14) Label the veins of the arm. Some terms may be used more than once.

Radial

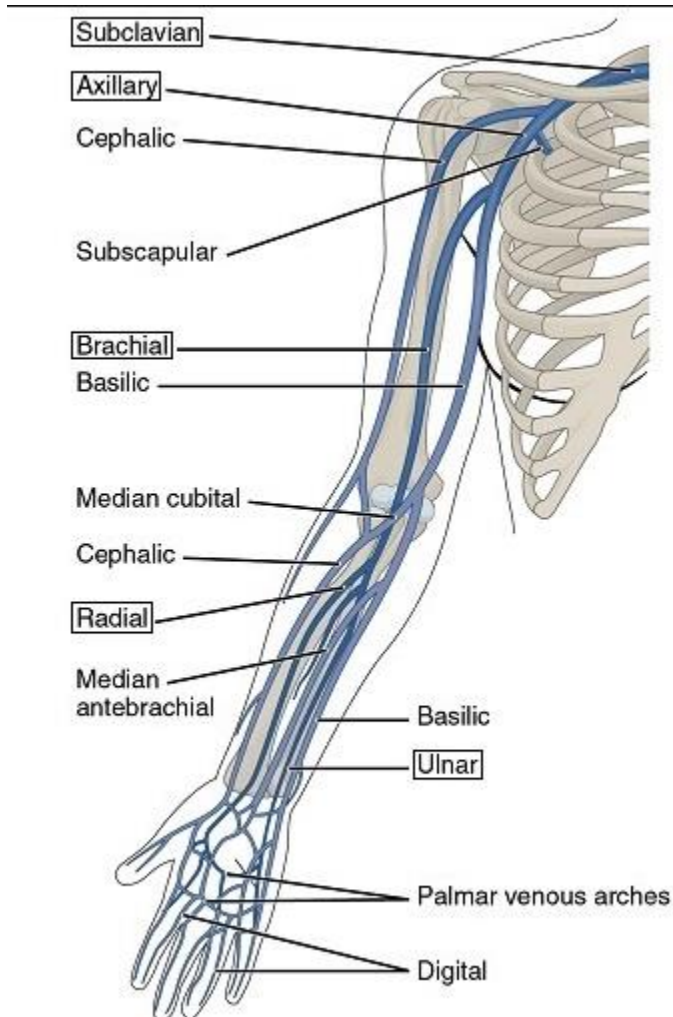
Digital

Median antebrachial

Median cubital
Axillary
Subscapular

Palmar venous arches
Ulnar
Brachial

Cephalic
Subclavian



Source Lesson: Major Veins of the Body

15) Label the veins of the head.

Right subclavian

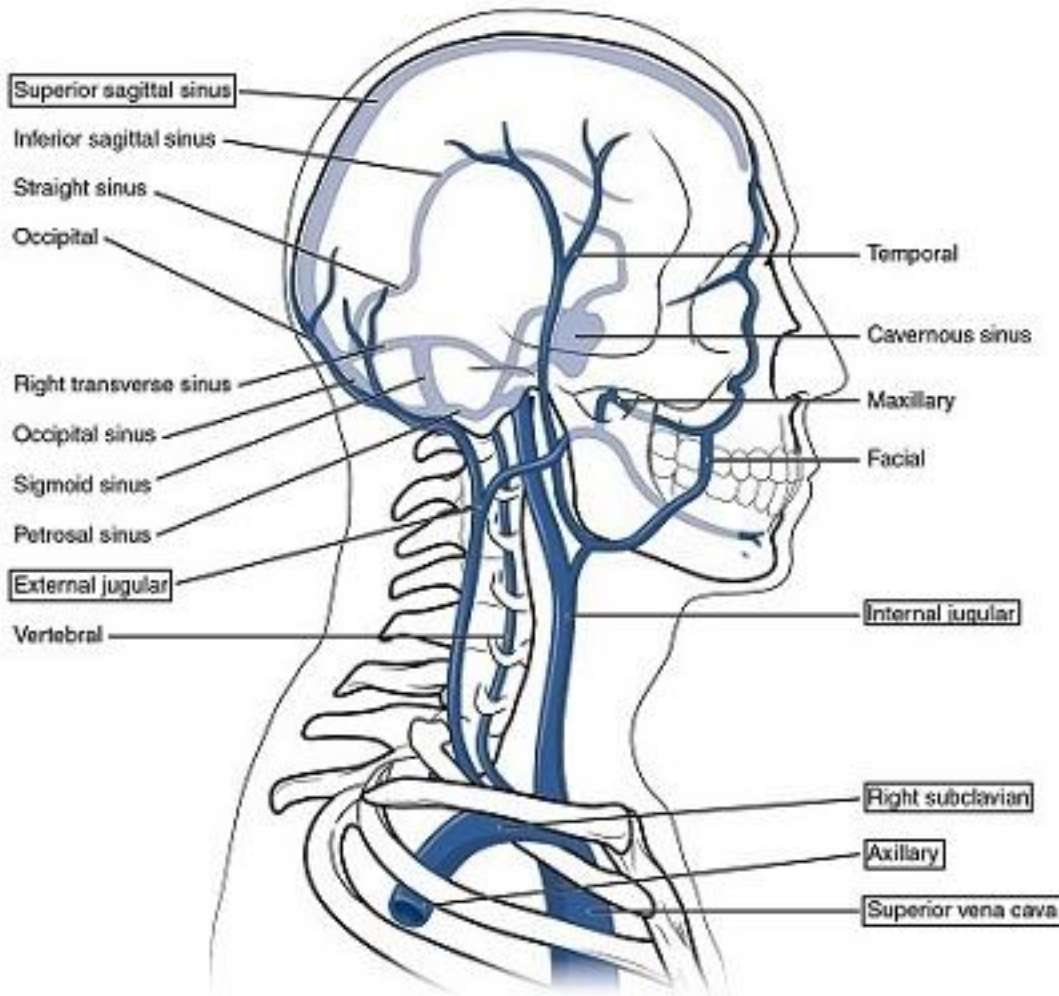
Temporal

Internal jugular

Superior vena cava
 Cavernous sinus
 Sigmoid sinus
 Maxillary
 Petrosal sinus

Straight sinus
 Axillary
 Inferior sagittal sinus
 Vertebral
 Facial

Right transverse sinus
 Occipital sinus
 Occipital
 External jugular
 Superior sagittal sinus



Source Lesson: Major Veins of the Body

16) Label the veins of the upper body.

Axillary
 Basilic

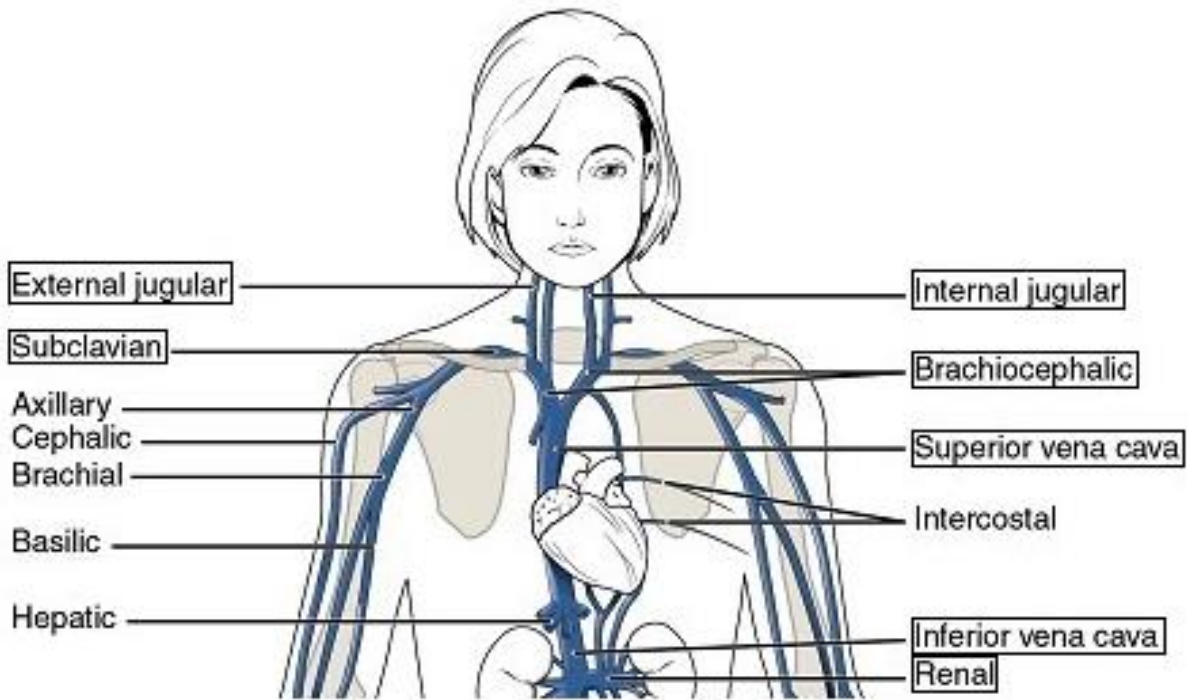
External jugular
 Internal jugular

Cephalic
 Brachial

Renal
Hepatic
Inferior vena cava

Subclavian
Intercostal

Superior vena cava
Brachiocephalic

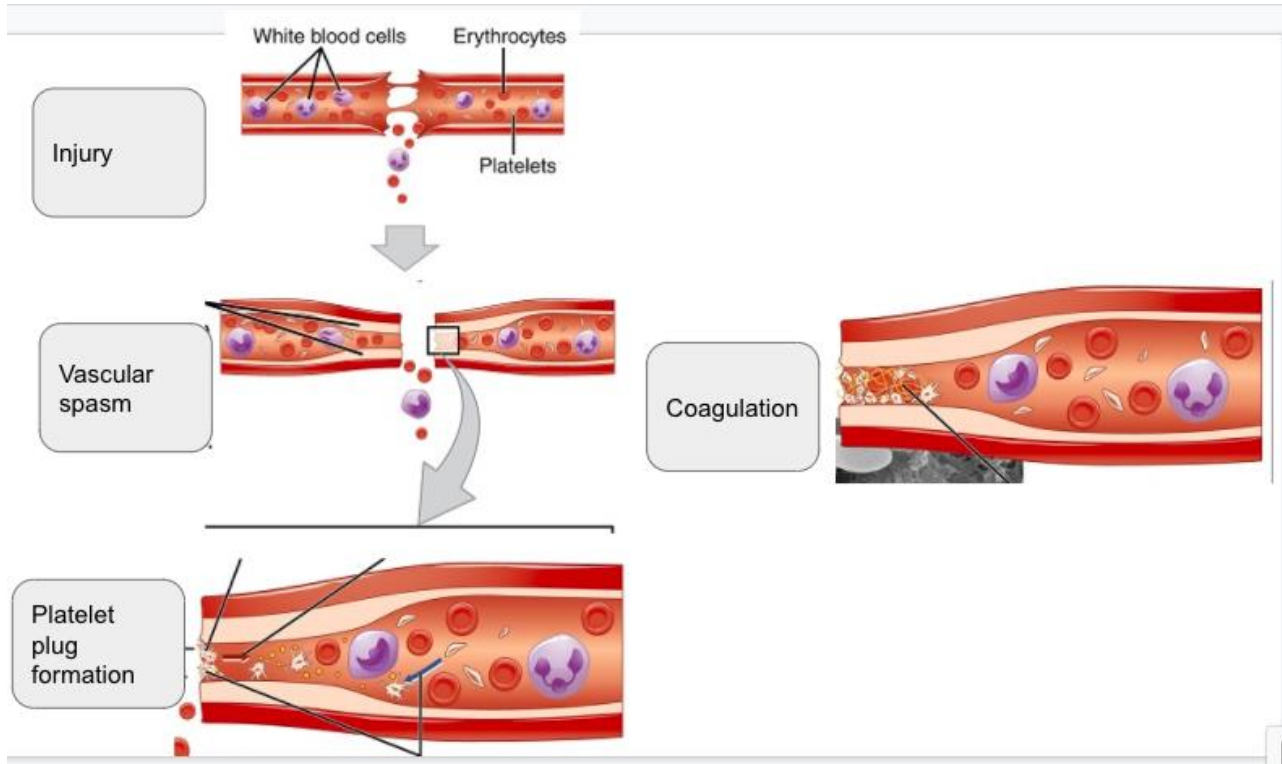


Source Lesson: Major Veins of the Body

17) Label the process of hemostasis.

Coagulation
Injury

Platelet plug formation
Vascular spasm



Source Lesson: Hemostasis: Coagulation Process, Platelet Formation & Clotting Conditions

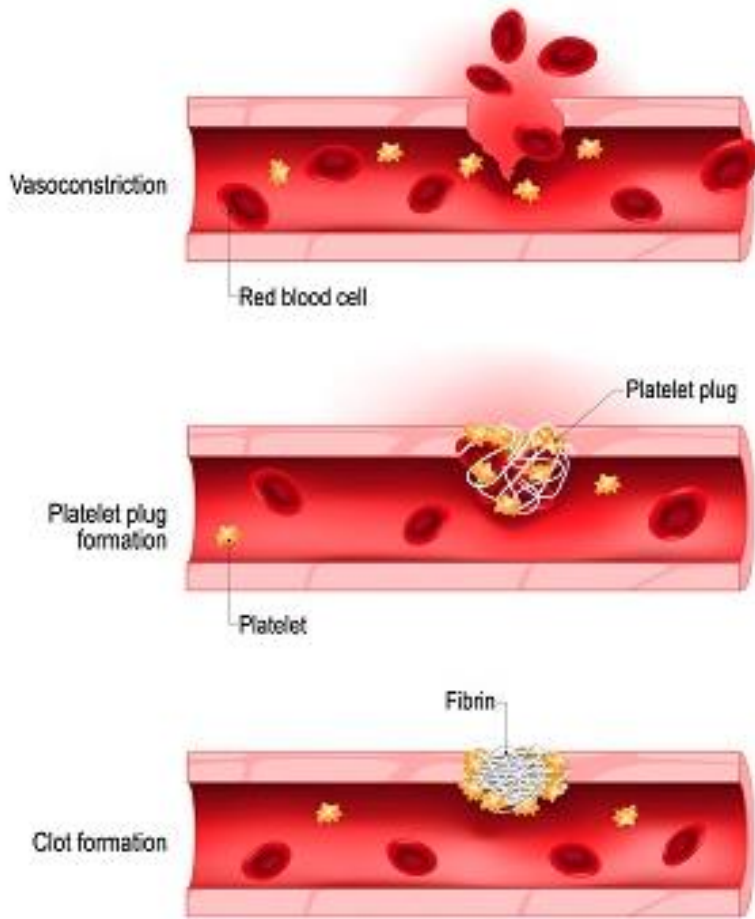
18) Label the diagram below.

Platelet plug formation
Red blood cell

Vasoconstriction
Platelet

Platelet plug
Fibrin

Clot formation



Source Lesson: Hemostasis: Coagulation Process, Platelet Formation & Clotting Conditions

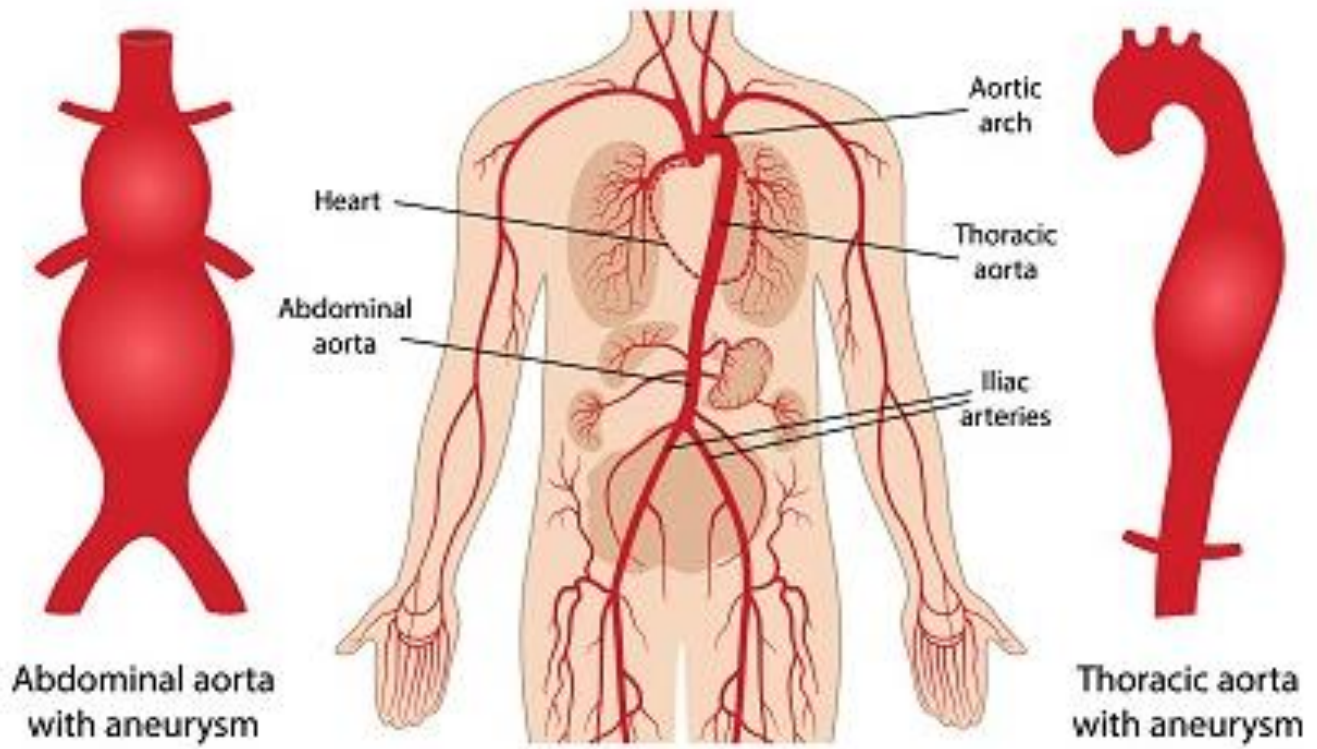
19) Label the diagram below.

Abdominal aorta with aneurysm
Thoracic aorta with aneurysm

Heart
Abdominal aorta

Aortic arch
Iliac arteries

Thoracic aorta



Pathological Conditions in the Vascular System