



88126004



International Baccalaureate®
Baccalauréat International
Bachillerato Internacional

BIOLOGY
STANDARD LEVEL
PAPER 1

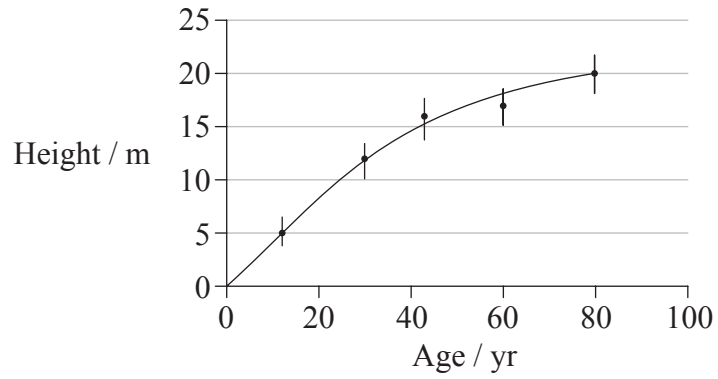
Friday 16 November 2012 (afternoon)

45 minutes

INSTRUCTIONS TO CANDIDATES

- Do not open this examination paper until instructed to do so.
- Answer all the questions.
- For each question, choose the answer you consider to be the best and indicate your choice on the answer sheet provided.
- The maximum mark for this examination paper is *[30 marks]*.

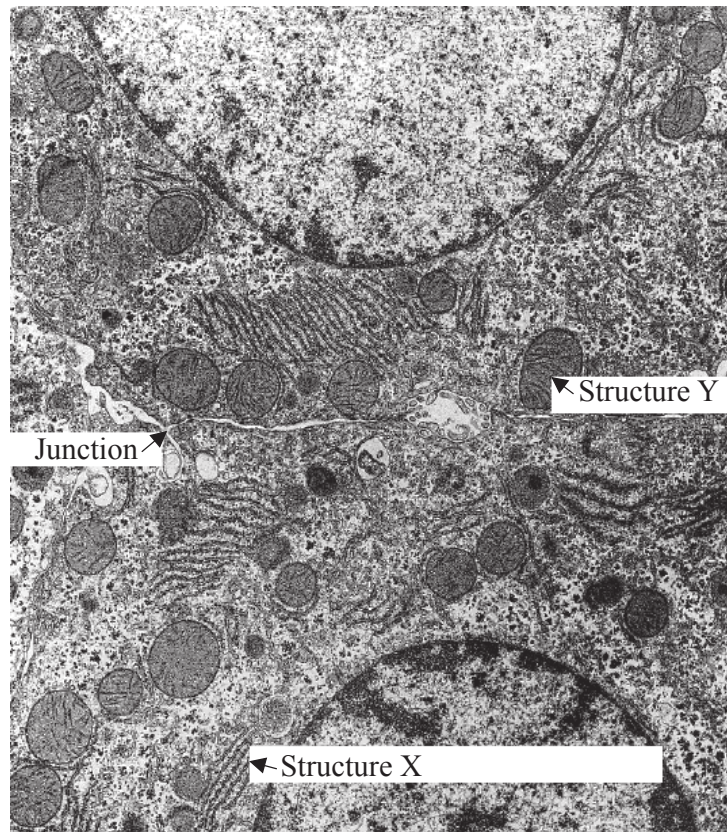
1. A student completed a study on the height of trees of different ages. The results are shown in the following graph.



What could the vertical bars represent?

- A. The median height for each age of tree
- B. The value of t compared to other species of trees
- C. Plus one to minus one standard deviation
- D. The correlation between the height and diameter of the trees

Questions 2 and 3 refer to the following electron micrograph which shows part of two adjacent liver cells.



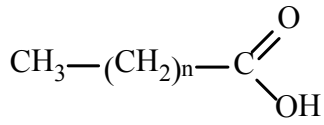
[Source: www.relife.com/Images/ratlivercells.gif]

2. What is happening at the structure labelled X?
- A. Synthesis of proteins
 - B. Transport of proteins to the nucleus
 - C. Modification of proteins prior to export
 - D. Secretion of proteins through the plasma membrane
3. What is the structure labelled Y?
- A. Nucleus
 - B. Starch grain
 - C. Lysosome
 - D. Mitochondrion

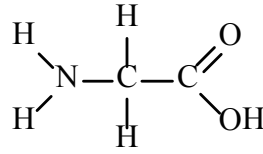
4. What is proportional to a cell's surface area?
- A. Rate of exchange of materials
 - B. Rate of heat production
 - C. Rate of waste production
 - D. Rate of oxygen consumption
5. Which process requires channel proteins?
- A. Simple diffusion
 - B. Facilitated diffusion
 - C. Binding of hormones
 - D. Exocytosis
6. What feature of cell membranes allows endocytosis to occur?
- A. Fluidity of phospholipid bilayer
 - B. Presence of protein pumps
 - C. Presence of carrier proteins
 - D. Glycoprotein binding sites
7. Which element or ion is required for transmission of a nerve impulse?
- A. Phosphorous
 - B. Sodium
 - C. Sulfur
 - D. Iron

8. Which structure represents a fatty acid?

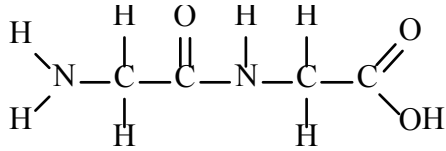
A.



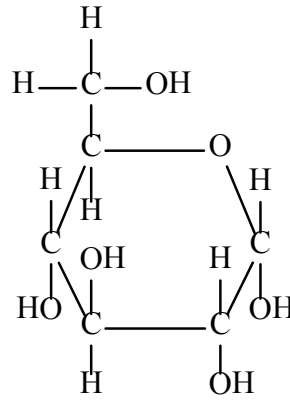
B.



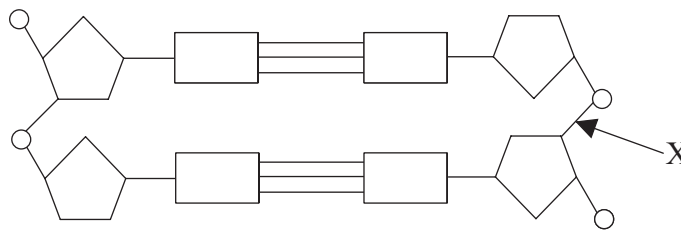
C.



D.



9. The diagram shows part of a DNA molecule.



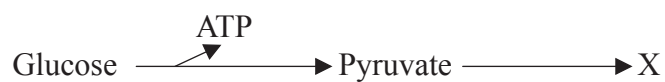
What type of bond does X represent?

- A. Covalent bond
- B. Hydrogen bond
- C. Peptide bond
- D. Semi-conservative bond

10. What will be the sequence on the mRNA molecule that is produced when the DNA base sequence ACTGATGCC is transcribed?

- A. ACTGATGCC
- B. ACUGAUGCC
- C. TGACTACGG
- D. UGACUACGG

11. The diagram shows anaerobic respiration in yeast cells.



What would be produced at X?

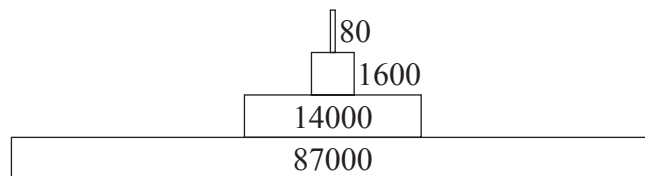
- A. ATP
 - B. Lactate
 - C. Ethanol and CO₂
 - D. CO₂ and H₂O
12. What is the energy absorbed by chlorophyll used directly for in plants?
- I. To produce ATP
 - II. To split water
 - III. To fix CO₂
- A. I only
 - B. III only
 - C. I and II only
 - D. II and III only

13. What is the name given to a heritable factor which controls a specific characteristic?
- A. Allele
 - B. Chromosome
 - C. Gene
 - D. Mutation
14. What would be the expected result if a woman carrier for colour blindness and a colour blind man had many children?
- A. All offspring will be colour blind.
 - B. All male offspring will be colour blind and all females normal.
 - C. All males will be normal and all females will be colour blind.
 - D. All females will be carriers of colour blindness or colour blind.
15. In peas, tall is dominant to dwarf. In a cross between a dwarf plant and a heterozygous tall plant what percentage of the offspring will be dwarf?
- A. 0%
 - B. 25%
 - C. 50%
 - D. 100%
16. What commonly causes Down syndrome in humans?
- A. Non-disjunction
 - B. Base substitution
 - C. Amniocentesis
 - D. Gene mutation

17. When genes are transferred between species, the amino acid sequence of the polypeptide translated from them is unchanged. Why is this so?
- A. All organisms use ribosomes for protein synthesis.
 - B. DNA replication is semi-conservative.
 - C. The enzymes used are substrate specific.
 - D. The genetic code is universal.
18. A biologist exploring an uninhabited island came across an unknown plant. She made the following notes:
- grows in a damp and shady corner of the island
 - has large feathery leaves with spore cases (sporangia) arranged on the underside
 - young leaves are tightly rolled up
 - has roots.

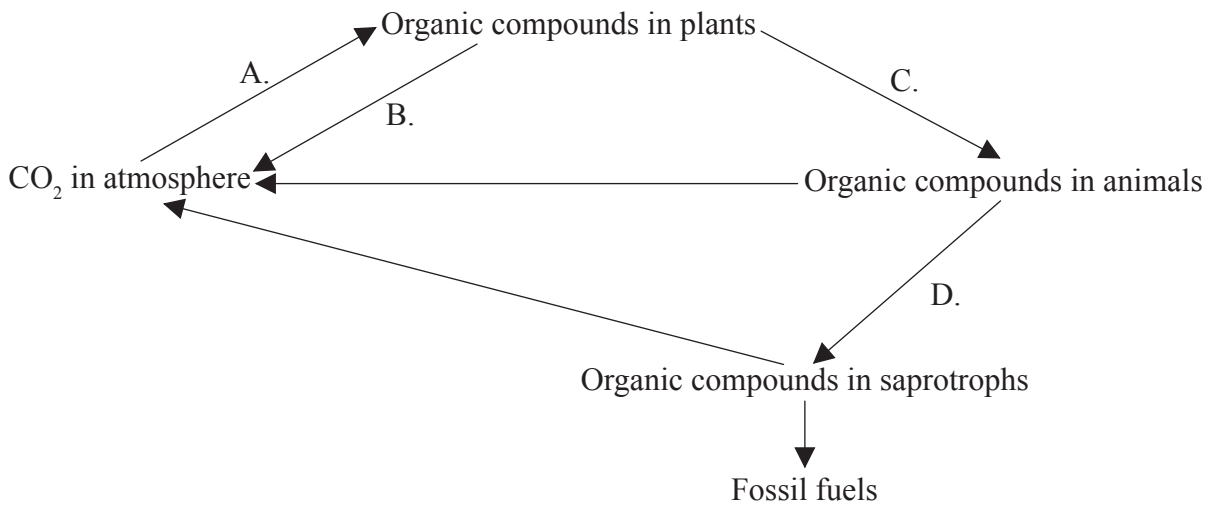
In what phylum should she classify this plant?

- A. Angiospermophyta
 - B. Bryophyta
 - C. Coniferophyta
 - D. Filicinophyta
19. The diagram shows a pyramid of energy for a wetland environment. What units would be appropriate for the values shown?

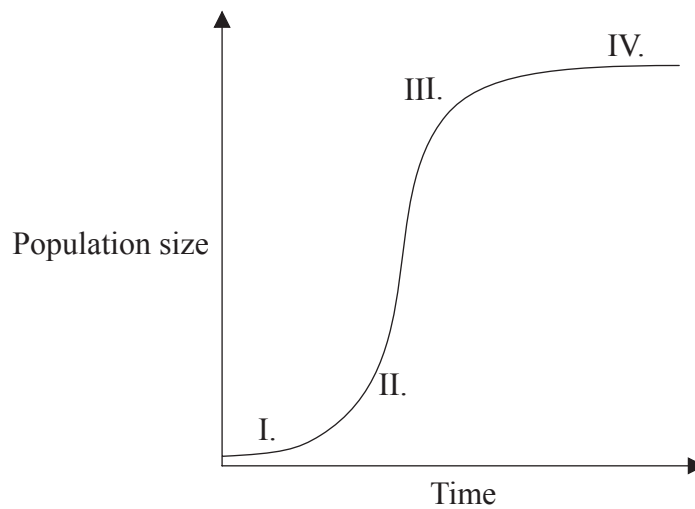


- A. kg yr^{-1}
- B. $\text{kJ m}^{-2} \text{yr}^{-1}$
- C. J m^{-2}
- D. $\text{mg dry mass m}^{-3}$

20. The diagram shows the carbon cycle. Which letter indicates respiration?

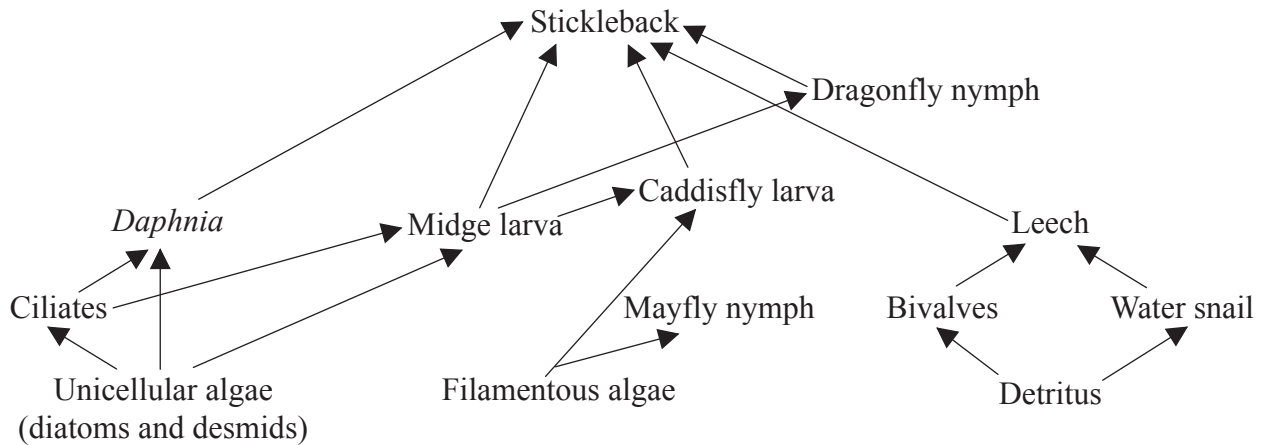


21. Which numbers represent exponential growth in a population of water fleas introduced to a new culture medium?



- A. I and II
- B. II and III
- C. I, II and III
- D. II, III and IV

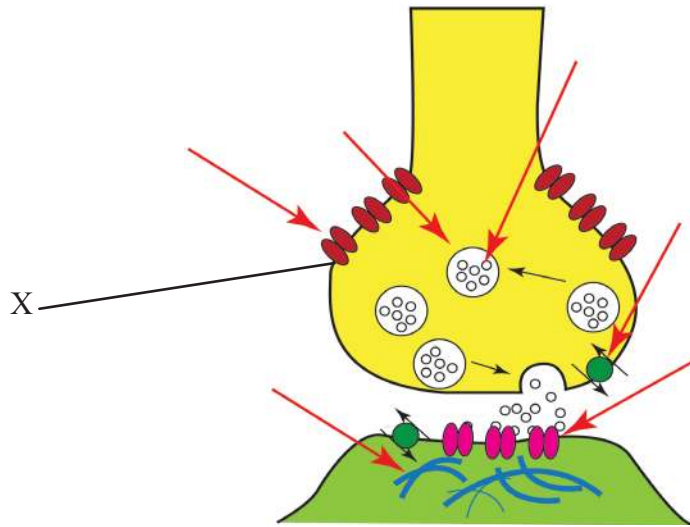
Questions 22 and 23 refer to the following diagram which is part of a food web for a freshwater habitat.



22. What is the mode of nutrition of midge larva?
- A. Autotroph
 - B. Detritivore
 - C. Heterotroph
 - D. Saprotroph
23. Which represents a correct food chain from this web?
- A. stickleback → midge larva → unicellular algae
 - B. ciliates → *Daphnia* → stickleback → dragonfly nymph
 - C. diatom → midge larva → caddisfly larva → stickleback
 - D. filamentous algae → mayfly nymph → leech → stickleback

24. What are antibodies?
- A. Organisms or viruses that cause disease
 - B. Drugs used to treat bacterial diseases
 - C. Substances the body recognizes as foreign
 - D. Proteins that bind to foreign substances
25. A structure has a thin epithelium of one cell layer and contains a lacteal and blood capillaries. It has protein channels and mitochondria to aid absorption. What is this structure?
- A. Alveolus
 - B. Gastric gland
 - C. Pancreas
 - D. Villus
26. Which statement describes the movements of the rib cage during inhalation of air?
- A. External intercostal muscles contract moving the ribs up and outwards.
 - B. Internal intercostal muscles contract moving the ribs down and inwards.
 - C. External intercostal muscles relax moving ribs down and inwards.
 - D. Internal intercostal muscles relax moving ribs up and outwards.

27. The diagram shows events at a synapse.



[Source: Adapted from: http://en.wikipedia.org/wiki/File:Synapse_Illustration_unlabeled.svg]

What is happening at the point labelled X?

- A. Neurotransmitter binding
 - B. Ca²⁺ diffusing
 - C. Neurotransmitter moving across synapse
 - D. Na²⁺ binding
28. What is a feature of type I diabetes but not type II diabetes?
- A. Target cells become insensitive to insulin.
 - B. β cells do not produce sufficient insulin.
 - C. Type I diabetes can be controlled through a low carbohydrate diet.
 - D. α cells produce excess insulin.

29. The concentration of which hormone peaks sharply triggering ovulation?

- A. FSH
- B. LH
- C. Estrogen
- D. Progesterone

30. The diagram shows a section through the male reproductive system. Which structure represents the prostate gland?

