

BIOPHILIC DESIGN: THE ARCHITECTURE OF LIFE

a documentary by Stephen R. Kellert and Bill Finnegan

60 minutes | HD | Color | English | 2011



SYNOPSIS

Biophilic Design is an innovative way of designing the places where we live, work, and learn. We need nature in a deep and fundamental fashion, but we have often designed our cities and suburbs in ways that both degrade the environment and alienate us from nature. The recent trend in green architecture has decreased the environmental impact of the built environment, but it has accomplished little in the way of reconnecting us to the natural world, the missing piece in the puzzle of sustainable development. Come on a journey from our evolutionary past and the origins of architecture to the world's most celebrated buildings in a search for the architecture of life. Together, we will encounter buildings that connect people and nature – hospitals where patients heal faster, schools where children's test scores are higher, offices where workers are more productive, and communities where people know more of their neighbors and families thrive. Biophilic Design points the way toward creating healthy and productive habitats for modern humans.

CONTACT

Bill Finnegan
Tamarack Media
802-238-9355
bill@tamarackmedia.com

Website:
<http://www.biophilicdesign.net/>

Trailer:
<http://vimeo.com/27874539>

PRODUCER BIOS

Dr. Stephen R. Kellert is the Tweedy Ordway Professor Emeritus of Social Ecology and Senior Research Scholar at the Yale University School of Forestry and Environmental Studies. He is also a member of the Board of Directors of Bio-Logical Capital, a firm that invests in and implements sustainable land uses on large landscapes, as well as he was a founding partner of Environmental Capital Partners, a private equity company investing in the environmental sector. His work focuses on understanding the connection between nature and humanity with a particular interest in environmental conservation and sustainable design and development. His awards include: the 2011 Lifetime Achievement Award, Connecticut Outdoor and Environmental Educators Association; the 2010 Distinguished Alumni Service Award, Yale University School of Forestry and Environmental Studies; the 2009 George B. Hartzog Award for Environmental Conservation; the 2008 American Publishers Professional and Scholarly Best Book of Year Award in Architecture and Urban Planning for the book *Biophilic Design*; the 2005 Outstanding Research Award for contributions to theory and science, from the North American Association for Environmental Education; the 1997 National Conservation Achievement Award, from the National Wildlife Federation; the 1990 Distinguished Individual Achievement Award, from the Society for Conservation Biology; the 1985 Best Publication of Year Award, from the International Foundation for Environmental Conservation; and, the 1983 Special Achievement Award, from the National Wildlife Federation. Dr. Kellert is also listed and described in “American Environmental Leaders: From Colonial Times to the Present.” He has served on committees of the National Academy of Sciences, and has been a member of the board of directors of many organizations. He has authored more than 150 publications, including the following books: *Endless Spring: the Ties that Bind Nature with Humanity* (Yale University Press, in preparation); *Companions in Wonder: Reflections on Children and Adults Exploring Nature Together* (edited with J. Dunlap, Cambridge: MIT Press, 2011); *The Coming Transformation: Values to Sustain Natural and Human Communities* (edited with Gus Speth, Yale FES, 2010); *Biophilic Design: The Theory, Science, and Practice of Bringing Buildings to Life* (co-editors, J. Heerwagen, M. Mador, John Wiley, 2008), *Building for Life: Designing and Understanding the Human-Nature Connection* (Island Press 2005); *Kinship to Mastery: Biophilia in Human Evolution and Development* (Island Press, 1997); *The Value of Life: Biological Diversity and Human Society* (Island Press, 1996); *The Biophilia Hypothesis* (edited with E.O. Wilson, Island Press, 1993); *The Good in Nature and Humanity: Connecting Science, Religion, and Spirituality with the Natural World* (edited with T. Farnham, Island Press, 2002); *Children and Nature: Psychological, Sociocultural, and Evolutionary Foundations* (edited with P. Kahn, Jr., MIT Press, 2002); and *Ecology, Economics, Ethics: The Broken Circle* (edited with F.H. Bormann, Yale University Press, 1991).

Bill Finnegan is a founding partner of Tamarack Media, a multimedia production company that specializes in telling stories about the relationship between people and nature and harnessing the power of new media to educate and advocate. Through Tamarack, Bill has produced award-winning films for television, film festivals, and the web, including *Building Community with Greenspace* (episode in the 2006 public television series *Natural Heroes*), *Restoring America's Serengeti* (Best PSA, 2005 International Wildlife Film Festival), and *Wetlands & Wonder* (Merit Award for Conservation Message, 2009 International Wildlife Film Festival). Bill also served as Associate Producer and Additional Editor on *The Axe in the Attic*, a feature documentary on the Hurricane Katrina Diaspora that premiered at the 2007 New York Film Festival. In 2006, Bill received the *Journey of a Lifetime* grant from the Royal Geographical Society to produce a radio documentary on Cairo's garbage collectors and recyclers (the Zabbaleen) that was broadcast on BBC Radio 4. Bill received a 2007 *New Voices* award from J-Lab: The Institute for Interactive Journalism and a 2010 *TogetherGreen Fellowship* from National Audubon Society and Toyota. Before founding Tamarack, Bill worked at Cross Current Productions, Interlock Media, and Smash Entertainment Group, where he made programs for the History Channel. Bill teaches video production at Champlain College, serves on the Montpelier Conservation Commission, and is the President of the Board of Directors of the DREAM Program. He lives in Montpelier with his wife Florence, their daughter Esme, and four chickens.

FEATURED LOCATIONS/PEOPLE



Aldo Leopold Foundation

Location: Baraboo, Wisconsin
Architect: Kubala Washatko Architects
Completed: 2007
Voices: Buddy Huffaker, Executive Director, Aldo Leopold Foundation



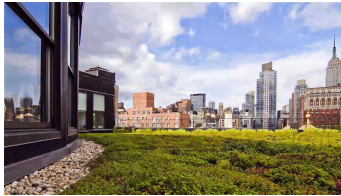
Bank of America Tower

Location: New York, New York
Architect: Cook+Fox
Completed: 2009
Voices: Bob Fox, Partner, Cook+Fox; Richard Cook, Partner, Cook+Fox



California Academy of Sciences

Location: San Francisco, California
Architect: Renzo Piano
Completed: 2008
Voices: Christopher Andrews, COO, California Academy of Sciences



Cook+Fox Architects, Office

Location: New York, New York
Architect: Cook+Fox
Completed: 2006
Voices: Richard Cook, Partner, Cook+Fox



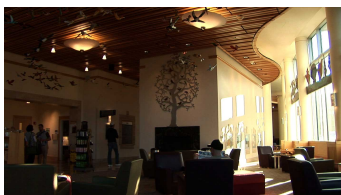
David Mellor Design, Cutlery Factory

Location: Sheffield, England
Architect: Hopkins Architects
Completed: 1989
Voices: Corin Mellor, Creative Director, David Mellor Design



Dell Children's Hospital, Seaton Family of Hospitals

Location: Austin, Texas
Architect: Karlsberger, CMPBS (Sustainability Consultant)
Completed: 2007
Voices: Gail Vittori and Pliny Fisk III, CMPBS; Beth Hadi, Pediatric ICU Nurse, Dell Children's; Alan Bell, Director Design/Construction, Seaton Family of Hospitals; Toni Torres, Patient's Mother



Doernbecher Children's Hospital, Oregon Health & Science University

Location: Portland, Oregon
Architect: Zimmer, Gunsul, Frasca Architects
Completed: 1998
Voices: Jan Frietas-Nichol, Director of Children's Services, Doernbecher; Stacey Nicholson, Physician in Chief, Doernbecher; DeAnna Lawson, Patient's Mother



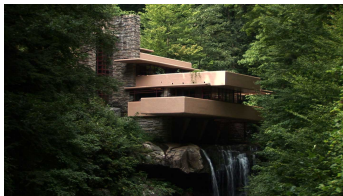
Embassy of Finland

Location: Washington, District of Columbia
Architect: Mikko Heikkinen and Markku Komonen
Completed: 1994
Voices: Edward O. Wilson, Harvard University



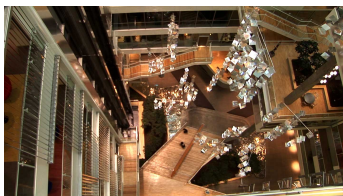
EVA Lanxmeer

Location: Culemborg, Holland
Architect/Planner: Marleen Kaptein
Completed: 1994
Voices: Marleen Kaptein, Founder, EVA Lanxmeer



Fallingwater

Location: Mill Run, Pennsylvania
Architect: Frank Lloyd Wright
Completed: 1935
Voices: Frank Lloyd Wright (archival recording); Grant Hildebrand,
Author: Origins of Architecture Pleasure



Genzyme Center

Location: Cambridge, Massachusetts
Architect: Behnisch, Behnisch & Partner; Next Phase Studios
Completed: 2003
Voices: Martin Werminghausen, Principal, Next Phase Studios;
Rick Mattila, Director of Environmental Affairs, Genzyme



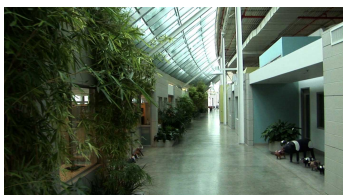
Grand Central Terminal

Location: New York, New York
Architect: Reed & Stern, Warren & Wetmore
Completed: 1913
Voices: Stephen Kellert, Author: Biophilic Design



Google, YouTube Headquarters

Location: San Bruno, California
Architect: William McDonough + Partners
Completed: 1997
Voices: Anthony Ravitz, Project Engineer Workplace Services,
Google



Herman Miller, Greenhouse

Location: Holland, Michigan
Architect: William McDonough + Partners
Completed: 1995
Voices: Paul Murray, Director Environmental Health & Safety, and
Ed Nagelkirk, Senior Manager Workplace Solutions, Herman Miller;
William McDonough, Founder, McDonough + Partners



High Point, Seattle Housing Authority

Location: Seattle, Washington
Architect: Mithun
Completed: 2006
Voices: Matt Sullivan, Mithun; Tom Phillips, Seattle Housing
Authority



Islandwood

Location: Bainbridge Island, Washington
Architect: Mithun
Completed: 2002
Voices: Bert Gregory, CEO, Mithun; Karen Salsbury, Educator, Islandwood



Johnson Wax Building, Great Workroom

Location: Racine, Wisconsin
Architect: Frank Lloyd Wright
Completed: 1936
Voices: Bill Browning, Founding Partner, Terrapin Bright Green



King Middle School, Edible Schoolyard

Location: Berkeley, California
Voices: Claire Cooper Marcus, University of California Berkeley;
Marsha Guerero, Director, Edible Schoolyard



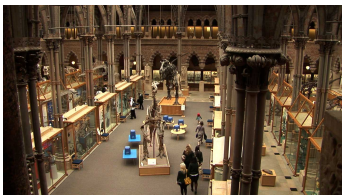
NRG Systems

Location: Hinesburg, Vermont
Architect: William Maclay Architects & Planners
Completed: 2004
Voices: Anna Grady, Human Resources, NRG; Carolyn West, Engineer, NRG; Ann Greenamyre, Controller, NRG



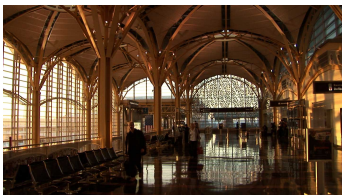
Oberlin College, Adam Joseph Lewis Center

Location: Oberlin, Ohio
Architect: William McDonough + Partners
Completed: 1998
Voices: David Orr, Professor, Oberlin; William McDonough, Founder, McDonough + Partners



Oxford Museum of Natural History

Location: Oxford, England
Architect: Deane & Woodward
Completed: 1860
Voices: Trevor Garnham, Author: Environments of Architecture;
Kent Bloomer, Author: Nature of Ornament



Ronald Reagan Washington National Airport

Location: Washington, District of Columbia
Architect: César Pelli; Kent Bloomer Studio (foliated trellis)
Completed: 1997
Voices: Kent Bloomer, Author: Nature of Ornament



Sahlgrenska Hospital, Psychiatric Department

Location: Gothenburg, Sweden
Architect: White Arkitekter
Completed: 2007
Voices: Roger Ulrich, Texas A&M; Stefen Lundin, White Arkitekter;
Lennart Bogren and Diana Sevelin, Sahlgrenska Psychiatric Department



Shangri La Botanical Gardens & Nature Center

Location: Orange, Texas

Architect: Lake-Flato

Completed: 2008

Voices: Ted Flato, Founding Director, Lake-Flato; Michael Hoke, Director, Shangri La Botanical Gardens



Sidwell Friends Middle School

Location: Washington, District of Columbia

Architect: Kieran-Timberlake

Completed: 2006

Voices: Jennifer Mitchell, Assistant Principal, Sidwell; Margaret Pennock, Teacher, Sidwell; Carrington Conerly, Student, Sidwell; Nina Moiseiwitsch, Student, Sidwell



Viaduc des Arts - Promenade plantée

Location: Paris France

Architect: Patrick Berger, Janine Galiano, Jaques Vergely, and

Philippe Mathieux

Completed: 1993

Voices: Patrick Berger, Architect



Village Homes

Location: Davis, California

Architect/Planner: Mike and Judy Corbett

Completed: 1975

Voices: Judy Corbett, Martha Platt, and Mike Nichols, Residents, Village Homes

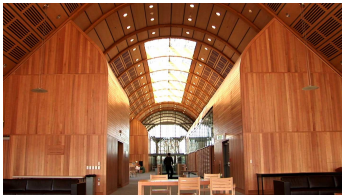


Warren Residence

Location: Warren, Vermont

Architect: Sellers & Company

Voices: David Sellers, Founder, Sellers & Company



Yale School of Forestry & Environmental Studies, Kroon Hall

Location: New Haven, Connecticut

Architect: Hopkins Architects

Completed: 2009

Voices: James G. Speth, Former Dean, Yale F&ES; Stephen Kellert, Author: Biophilic Design; Mike Taylor, Senior Partner, Hopkins Architects



Yestermorrow Design/Build School

Location: Warren, Vermont

Voices: Kate Stephenson, Executive Director, Yestermorrow

CREDITS

Executive Producer

Stephen Kellert

Producer, Camera, Editor

Bill Finnegan

Written by

Stephen Kellert and Bill Finnegan

Additional Camera

Taylor Gentry

Charles Divak

Hilary Byrne

Daniel Shearer

Audio Recordists

Jaime Garamella

Daniel Shearer

James Broadhurst

Bill Finnegan

Narrators

Stephen Kellert and Florence Miller

Translation

Miriam Heard

Original Music Composed, Performed and Recorded by

Peter Land and Jaime Garamella

Prelude Op. 28, No. 15 in D-flat major (the Raindrop Prelude)

Composed by Frédéric François Chopin

Performed by Emily Copeland

Recorded by Peter Land

Support from

The Henry Luce Foundation

Geraldine R. Dodge Foundation

Autodesk

School of Forestry and Environmental Studies, Yale University