

# BIS - Overview and basic package V3.0

www.boschsecurity.com



**BOSCH**  
Invented for life



- ▶ Complete enterprise management for efficient, integrated building and security management in a single solution
- ▶ Consistent use of world-wide open IT standards for configuring, interfacing and displaying makes BIS extremely user and installer friendly
- ▶ Provides even better integration of Bosch and 3rd party systems through OPC compliance
- ▶ Easily links alarm information to user-defined action-plans and existing location maps
- ▶ Modular structure makes it easy to create a security solution which best meets your requirements

## The building management system

The Building Integration System (BIS) is a flexible building management system which can be configured to suit the user's specific needs.

It contains a huge range of applications and features which enable both the integration and coupling as well as the monitoring and control of all technical building systems.

The new generation builds on Bosch's many years of experience in management systems and was considerably influenced by the following market trends:

- Increasing complexity of technical building equipment  
The increasing complexity of technical equipment inside buildings requires a powerful management system which combines the most varied functions (e.g. fire and intrusion alarm systems, access control, video systems and building automation... etc.) in the best possible way. The OPC standard enables BIS to process and share information efficiently with a huge variety of hardware devices and other sources.
- Using new technologies and standards  
While the strict regulations in the field of security technology ensure a high degree of reliability in security matters, they hinder the integrated use of

new technologies from the IT world. BIS has succeeded in harnessing the benefits of non-security-based technologies (e.g. OPC, CAD, web) and harmonizing them with the world of security technologies.

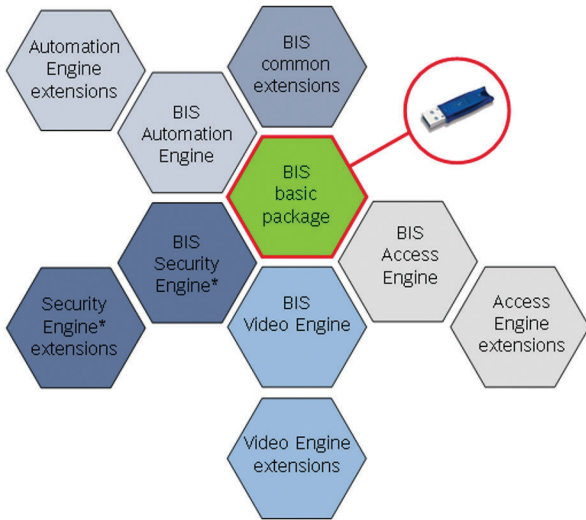
- Customers want complete solutions  
Facility managers and integrators are demanding a single building-management solution that is nevertheless able to integrate all their security subsystems.

## System overview

The Building Integration System is a versatile product made up of a basic package plus various optional components (also known as Engines) based on a common software platform. The engines can be combined to tailor building management systems to detailed requirements.

These main components are:

- Automation Engine
- Access Engine
- Video Engine
- Security Engine

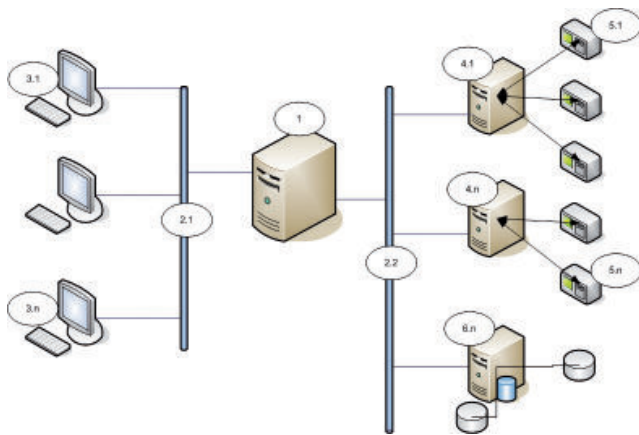


\* not available in all countries  
 These engines are described in greater detail in separate datasheets.

**Functions**

**System architecture**

The BIS Engines provide fire and intrusion detection, access control, video surveillance and the monitoring of HVAC and other vital systems. BIS is based on a performance-optimized three-tier architecture especially designed for use in Intranet and Internet environments. Subsystems are connected via the well-established world-wide OPC standard. BIS can operate on a standalone PC or in a networked client/server architecture.



1. BIS server	4.1.- 4.n Connection servers
2. Client network	5.1 – 5.n OPC compatible devices
3.1 – 3.n Clients	6. Database server

**Organizational structure and configuration**

A number of automatic functions and easy-to-use tools make the configuration of BIS installer-friendly, saving time and expense.

Hierarchical location trees can be created by the import of existing CAD data (standard DWF vector format) containing layers, named views and detector locations. Zooming and panning allow rapid navigation through the building.

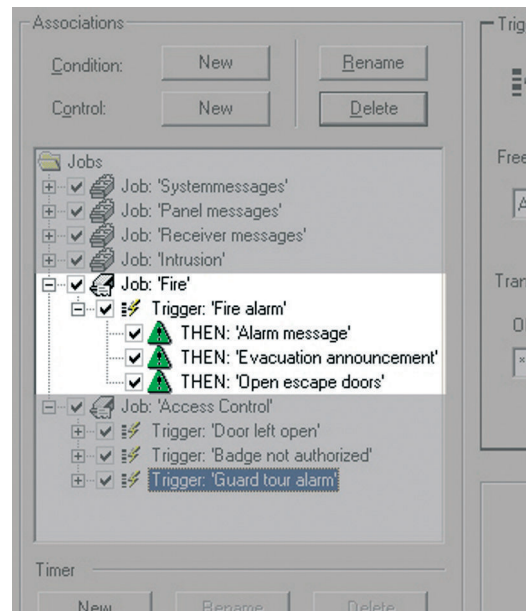
The BIS user interface is web-server-based using dynamic HTML pages. Default pages for different screen resolutions and formats are included in the installation software.

BIS automatically detects the monitor resolution and provides the appropriate user interface. The default pages can easily be customized using a standard HTML editor.

Existing configurations of OPC compliant subsystems can be easily imported into BIS through this open interface standard. An OPC server can be installed on a PC anywhere in the network and BIS will connect to it.

**Operation**

The main task of BIS is to operate as the alarm, monitor and control center for the various security systems within a site. Its graphical interface is designed to help the operator grasp the extent and urgency of an occurrence quickly, and to take prompt and effective action.



The heart of the system, the State Machine, monitors all incoming events and operator requests and takes those actions prescribed by user-defined rules or Associations, thus unburdening the operators. BIS client workstations require only Windows and the Internet Explorer. No local installation is necessary.

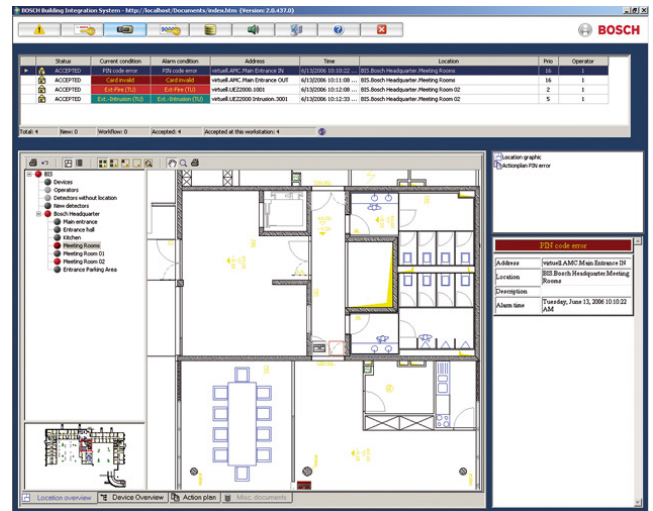
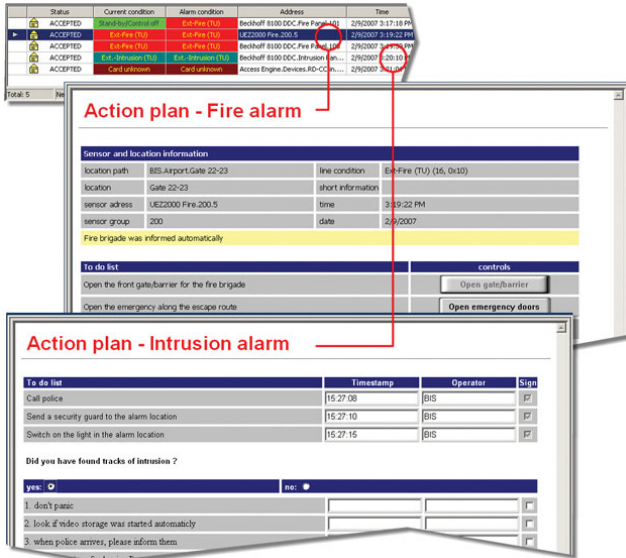




**BIS optional accessories**

The optional features listed below can be added to the BIS system to meet specific customer requirements. They are usable with all the BIS Engines (Automation, Access, Video and Security Engine).

This package extends the standard alarm handling of your BIS system with the capability of displaying action plans and location maps as well as the graphical navigation and the alarm-dependent visualization of layers inside those maps. This ensures optimal guidance to operators especially in stress situations, such as fire or intrusion alarms.

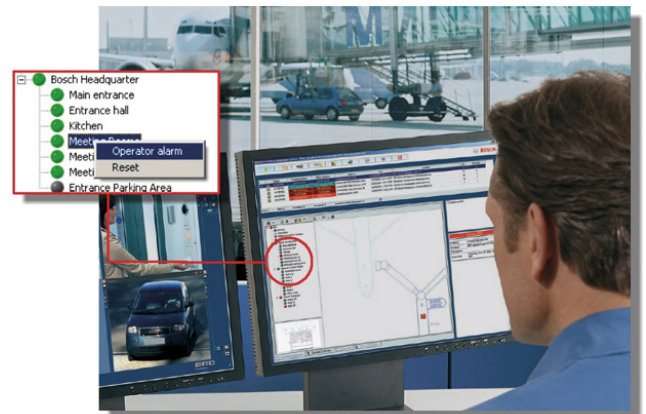


- Location maps are a visualization of premises e.g. floors, areas or rooms, based on the popular AutoCAD vector-graphics format. Detectors and other devices are represented by colored, animated icons that provide direct control via their context menus. In the case of an alarm BIS zooms automatically to the location in the map where it was triggered.
- A location tree, which can be created automatically, and the zoom/pan function allow synchronized graphical navigation within the buildings.
- Alarm-dependent layer control allows the display of additional graphical information for specific situations, e.g. escape routes in case of fire alarms.

Alarm-dependent action plans or workflows provide detailed event-dependent information such as standard operating procedures, live images, control buttons, etc. to the operator. Simply create and assign one action plan to each possible alarm type in your system, e.g. fire alarm, access denied, technical alarms, etc.

With the deletion of an alarm message an unmodifiable snapshot of the displayed action plan is attached to the event log. This ensures accountability by providing a trace of all steps performed by the operator during the alarm response.

This package extends the standard alarm-handling of your BIS system by some additional features: Message distribution allows the definition of escalation scenarios which are activated automatically when an operator or operator group fails to acknowledge an alarm message within a defined period. BIS will then forward the message automatically to the next authorized operator group. The timer feature allows the setup of time schedules which can be used to perform automatic control commands, such as closing a barrier at 8:00 pm, as well as for time-dependent redirection of alarm messages, e.g. within time period 1 show message to operator group 1 else to operator group 2.



The operator alarm feature allows an operator to trigger an alarm manually from the location tree, for example, if informed by telephone of a dangerous situation. Such manual alarms are processed in the same way as those triggered by a detector: that is, the associated documents are displayed and all steps taken are recorded in the event log.

The application launcher allows the invocation of non-BIS applications by the system based upon predefined conditions, e.g. alarms or timers. A typical application of this would be an automatic regular system backup.

## Installation/configuration notes

### Building Integration System in figures

Addresses, detectors, control elements, cameras etc. which can be processed in the entire system	500,000
max. number of states	unlimited
number of events per second	500 (continuous, with higher peaks)
max. number of network printers in the integrated network	not limited by BIS

## Parts included

Qty.	Components
1	BIS Installation DVD incl. BIS platform, complete engine software and installation manuals as PDF
1	Quick installation guide
1	License file
1	Dongle key
1	operator licence
1	OPC server license
	Event log
	Message processing (basic alarm management)

## Technical specifications

### Minimum technical requirements to be met by the BIS login or connection server

Processor 3GHz CPU Single Core or higher  
 4 GB RAM  
 80 GB of free HD space  
 DVD-ROM drive  
 100 Mbit network card (PCI)  
 1 free USB port for dongle

Graphical adapter with 1280 x 1024, 32 k colors

Windows Server 2008 R2,  
 or Windows 7 (32 or 64 Bit, but not Starter/Home Edition),  
 or Windows Server 2003 (SP2, R2, 32 Bit),  
 or Windows XP Professional SP3 (32 Bit) including IIS

- Microsoft Internet Explorer 8 or 9

- Keyboard, mouse

Subject to technical changes.

### Minimum technical requirements to be met by the BIS client workstation PC

Processor 3GHz CPU Single Core

4 GB RAM

20 GB of free HD space

100 Mbit Ethernet network card

Graphical adapter with 1280 x 1024, 32 k colors

Windows XP SP3 or Windows 7 (32/64 Bit)

Microsoft Internet Explorer 8 or 9

Keyboard, mouse

Subject to technical changes.

### Ordering information

BIS is available in the following languages:

- DE = German
- EN = English
- ES = Spanish
- FR = French
- HU = Hungarian
- NL = Dutch
- PT = Portuguese
- RU = Russian
- ZH-TW = Traditional Chinese
- ZH-CN = Simplified Chinese

A BIS basic package in one of these languages is always required when setting up a new system.

A Re-fitting package is required, one per order, when extending an existing BIS. For re-fitting older versions of BIS (1.4.x to 2.x), or upgrading such a version to the current one, please refer to the re-fitting packages for those versions.

## Ordering information

### BIS-Re-fitting features V3.0

Order number **BIS-GEN-REFV30**

### BIS 3.0 Basic Package DE

Order number **BIS-GEN-B30DE**

### BIS 3.0 Basic Package EN

Order number **BIS-GEN-B30EN**

### BIS 3.0 Basic Package NL

Order number **BIS-GEN-B30NL**

### BIS 3.0 Basic Package FR

Order number **BIS-GEN-B30FR**

**BIS 3.0 Basic Package RU**Order number **BIS-GEN-B30RU****BIS 3.0 Basic Package HU**Order number **BIS-GEN-B30HU****BIS 3.0 Basic Package ES**Order number **BIS-GEN-B30ES****BIS 3.0 Basic Package PT**Order number **BIS-GEN-B30PT****BIS 3.0 Basic Package CN**Order number **BIS-GEN-B30CN****BIS 3.0 Basic Package TW**Order number **BIS-GEN-B30TW****BIS Upgrade to Version 3.0 DE**Order number **BIS-GEN-UP30DE****BIS Upgrade to Version 3.0 EN**Order number **BIS-GEN-UP30EN****BIS Upgrade to Version 3.0 NL**Order number **BIS-GEN-UP30NL****BIS Upgrade to Version 3.0 FR**Order number **BIS-GEN-UP30FR****BIS Upgrade to Version 3.0 RU**Order number **BIS-GEN-UP30RU****BIS Upgrade to Version 3.0 HU**Order number **BIS-GEN-UP30HU****BIS Upgrade to Version 3.0 ES**Order number **BIS-GEN-UP30ES****BIS Upgrade to Version 3.0 PT**Order number **BIS-GEN-UP30PT****BIS Upgrade to Version 3.0 CN**Order number **BIS-GEN-UP30CN****BIS Upgrade to Version 3.0 TW**Order number **BIS-GEN-UP30TW****Software Options****Alarm document package**

License bundle containing Display of action plans, Display of location maps, Graphical navigation, and Layer controlling.

Order number **BIS-GEN-ADPACK****Alarm management package**

License bundle containing Message distribution, Timer, Operator alarm, and Application launcher.

Order number **BIS-GEN-AMPACK****Additional Division licence**

Licenses the addition of an autonomous, named party (aka Division) to your BIS installation.

Order number **BIS-GEN-ONEDIV****Additional operator licence**

Licenses the addition of an operator to your BIS installation.

Order number **BIS-GEN-CLIENT****Additional OPC server licence**

Licenses the addition of an OPC server to your BIS installation.

Order number **BIS-GEN-OPCLIC****N x 100 Bosch detector points**

Licenses the addition of 100 Bosch detector points to your BIS installation.

Order number **BIS-GEN-P100****N x 1,000 Bosch detector points**

Licenses the addition of 1000 Bosch detector points to your BIS installation.

Order number **BIS-GEN-P1K****N x 10,000 Bosch detector points**

Licenses the addition of 10 000 Bosch detector points to your BIS installation.

Order number **BIS-GEN-P10K**

**Represented by:**

**Americas:**

Bosch Security Systems, Inc.  
130 Perinton Parkway  
Fairport, New York, 14450, USA  
Phone: +1 800 289 0096  
Fax: +1 585 223 9180  
security.sales@us.bosch.com  
www.boschsecurity.us

**Europe, Middle East, Africa:**

Bosch Security Systems B.V.  
P.O. Box 80002  
5617 BA Eindhoven, The Netherlands  
Phone: + 31 40 2577 284  
Fax: +31 40 2577 330  
emea.securitysystems@bosch.com  
www.boschsecurity.com

**Asia-Pacific:**

Robert Bosch (SEA) Pte Ltd, Security  
Systems  
11 Bishan Street 21  
Singapore 573943  
Phone: +65 6571 2808  
Fax: +65 6571 2699  
apr.securitysystems@bosch.com  
www.boschsecurity.asia

**China:**

Bosch (Shanghai) Security Systems Ltd.  
201 Building, No. 333 Fuquan Road  
North IBP  
Changning District, Shanghai  
200335 China  
Phone +86 21 22181111  
Fax: +86 21 22182398  
www.boschsecurity.com.cn

**America Latina:**

Robert Bosch Ltda Security Systems Division  
Via Anhanguera, Km 98  
CEP 13065-900  
Campinas, Sao Paulo, Brazil  
Phone: +55 19 2103 2860  
Fax: +55 19 2103 2862  
al.securitysystems@bosch.com  
www.boschsecurity.com