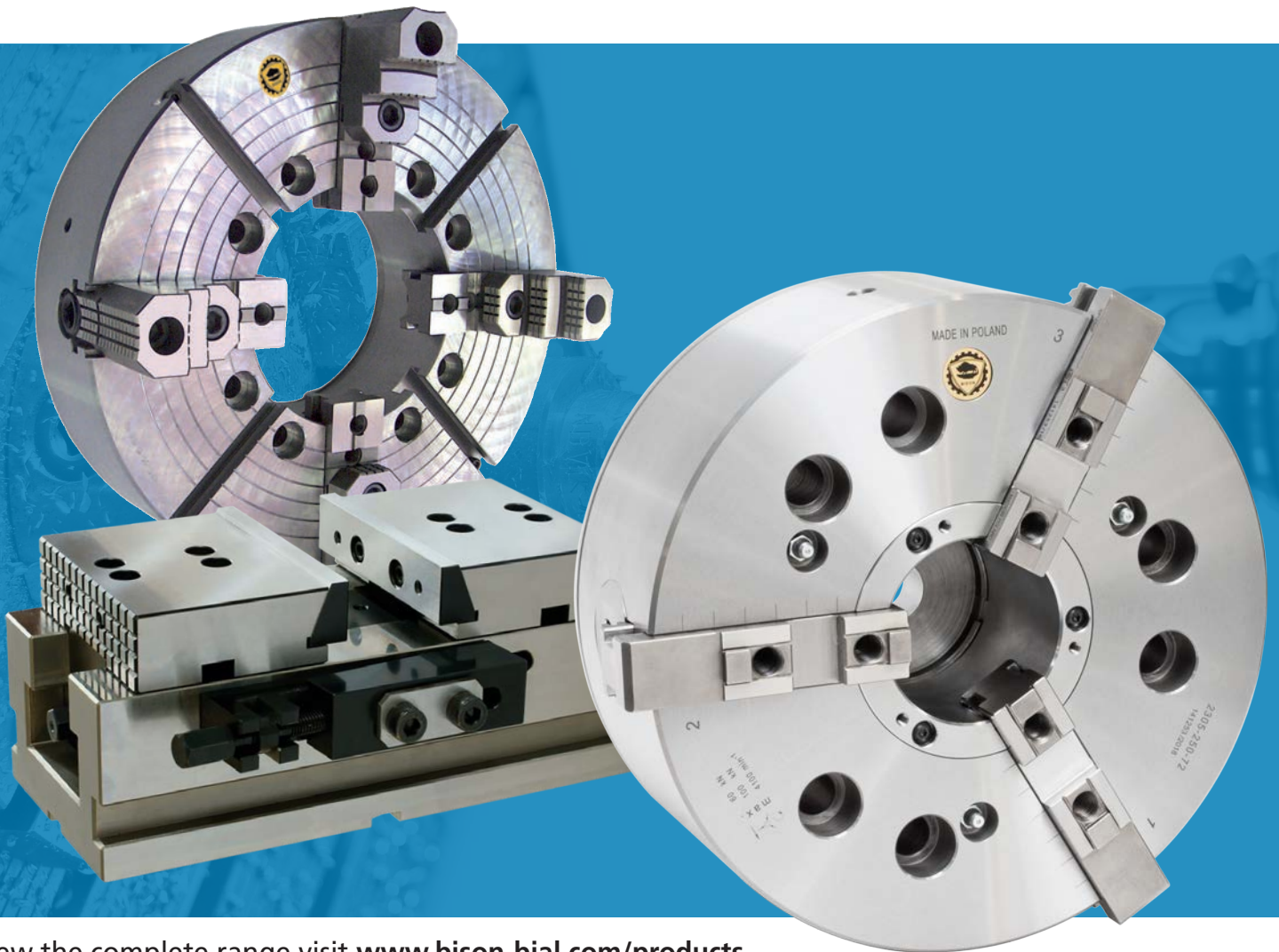


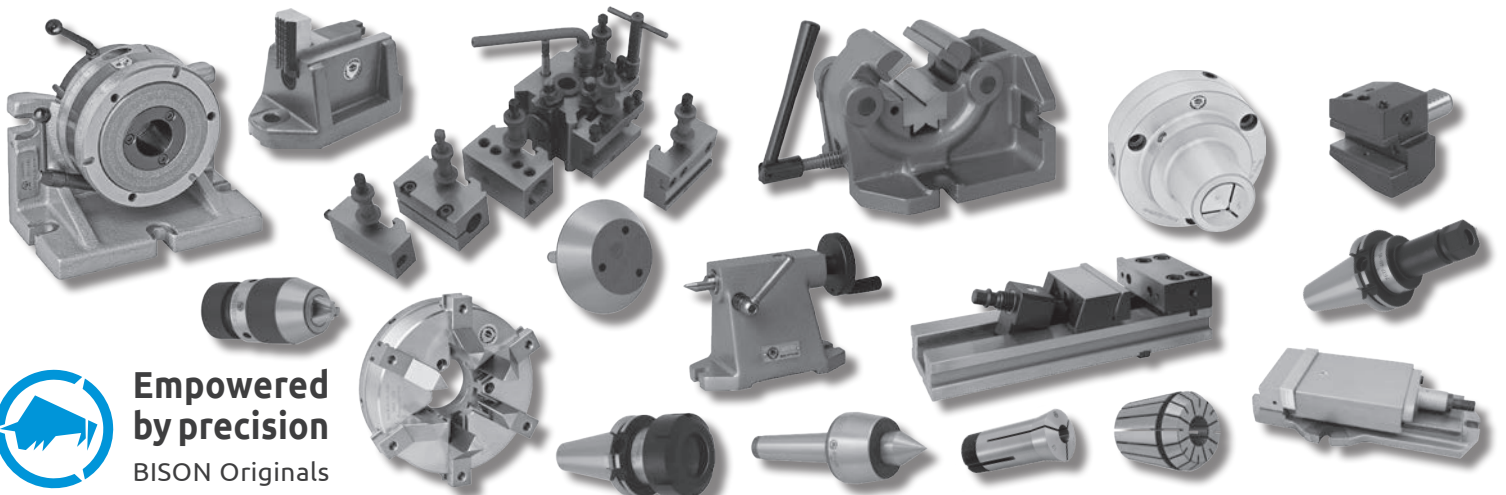
BISON

THE BEST OF 2019

A SELECTION OF OUR MOST POPULAR PRODUCTS



To view the complete range visit www.bison-bial.com/products



**Empowered
by precision**
BISON Originals

See page 3 for product content



Welcome to BISON Empowered By Precision

BISON opens new manufacturing facility making it one of the most technologically advanced manufacturers of clamping solution in the world.

Not just lathe chucks

Built on over 65 years experience BISON is today one of the world's leading providers of clamping technology solutions. Founded in 1948 in Poland BISON grew to be a trusted quality supplier of self-centring chucks and vices to markets in Eastern Europe. In Western Europe and the U.S. BISON has been accepted as an influential supplier of quality clamping solutions since the early 1980s. Following privatisation in 1997 and the appointment of an international management team in 2007 the company was re-structured to increase efficiency, productivity and quality. Meanwhile, the product range has continued to expand and now includes power chucks, large & special chucks, toolholders, CNC vices and spindle tooling.

Most modern technology

As part of a major company restructuring and a huge investment of over 40 Million Euro BISON has re-located to brand new purpose built facilities within the last quarter of 2014. Our new 53.000 sqm factory for clamping solution production incorporates a new hi-tech cast iron foundry together with the most modern heat treatment facility in Europe. The Machine Shop is equipped with several state of the art multi-functional 5-axis vertical and horizontal CNC-machining centres capable of machining work pieces to 3200mm in diameter. The investment also included a significant upgrade of the inspection department to ensure our high quality is consistent and meets the demands of our customers.

Worldwide presence

In the Global marketplace BISON provides clamping solutions to over 70 countries around the world. With our network of independent national sales offices such as BISON UK, giving us a better understanding of local culture and business practices, we are able to expertly service local markets making it easier for you our valued customer.

BISON your partner for the future



New Manufacturing Plants

- 53.0000 sq meter
- Built 2014
- Over 500 employees (BISON Group)

Best of 2019

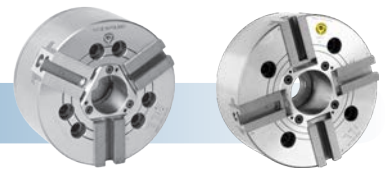
Included in this issue:

p. 2 about BISON

p. 4-8 LATHE CHUCKS



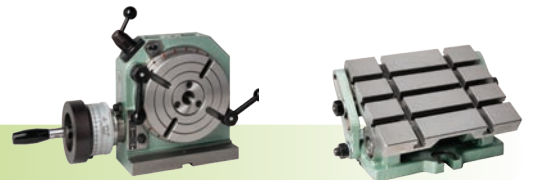
p. 9-10 POWER CHUCKS



p. 11-13 VICES



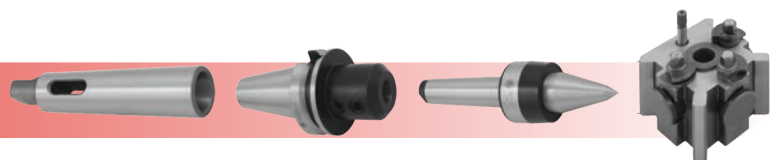
p. 14-15 BOX JAWS and MILLING FIXTURE



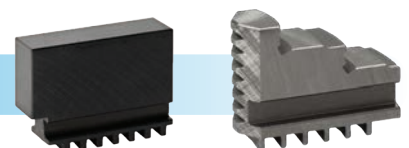
p. 16-17 VDI TOOLHOLDERS



p. 18-31 SPINDLE TOOLING and QUICKCHANGE TOOLPOSTS



p. 8, 10 CHUCK JAWS





Best of 2019

3204 – SELF-CENTRING SCROLL CHUCK - 3 JAW



Cast iron, plain back, rear mount, solid jaw C/W Set hard outside jaws, hard inside jaws & wrench. Ground working surfaces. Mounting from back with adapter plate.

Code	Diameter mm	Bore mm	List Price £
3204-80	80	16	214.62
3204-100	100	20	244.81
3204-125	125	32	261.24
3204-160	160	42	301.15
3204-200	200	55	355.92
3204-250	250	76	479.65
3204-315	315	103	749.76
3204-400	400	136	1348.89
3204-500	500	190	3700.42
3204-630	630	252	5710.87

3504 – SELF-CENTRING SCROLL CHUCK - 3 JAW



Steel, plain back, rear mount, solid jaw C/W Set hard outside jaws, hard inside jaws & wrench. Ground working surfaces. Mounting from back with adapter plate.

Code	Diameter mm	Bore mm	List Price £
3504-80	80	16	326.70
3504-100	100	20	373.63
3504-125	125	35.5	460.80
3504-160	160	42	523.86
3504-200	200	55	642.23
3504-250	250	76	767.59
3504-315	315	103	1147.49
3504-400	400	136	2087.32
3504-500	500	190	6160.27
3504-630	630	252	8781.91

3274 – SELF-CENTRING SCROLL CHUCK - 3 JAW



Cast iron, plain back, front mount, solid jaw C/W Set hard outside jaws, hard inside jaws & wrench. Ground working surfaces. Mounting from back or front using an adapter plate.

Code	Diameter mm	Bore mm	List Price £
3274-80	80	16	286.12
3274-100	100	20	317.77
3274-125	125	32	351.92
3274-160	160	42	339.72
3274-200	200	55	394.89
3274-250	250	76	544.51
3274-315	315	103	851.59
3274-400	400	136	1740.72
3274-500	500	190	4685.07
3274-630	630	252	6371.23

3575 – SELF-CENTRING SCROLL CHUCK - 3 JAW



Steel, plain back, front mount, 2 piece jaw C/W Set hard reversible jaws & wrench. Ground working surfaces. Mounting from back or front by using an adapter plate.

Code	Diameter mm	Bore mm	List Price £
3575-125	125	35.5	596.69
3575-160	160	42	611.72
3575-200	200	55	782.78
3575-250	250	76	1067.49
3575-315	315	103	1334.47
3575-400	400	136	2409.81
3575-500	500	190	6268.36
3575-630	630	252	9382.75

3205 – SELF-CENTRING SCROLL CHUCK - 3 JAW



Cast iron, plain back, rear mount, 2 piece jaw C/W Set hard top reversible jaws & wrench. Ground working surfaces. Mounting from back with adapter plate.

Code	Diameter mm	Bore mm	List Price £
3205-125	125	32	328.46
3205-160	160	42	351.08
3205-200	200	55	423.66
3205-250	250	76	615.49
3205-315	315	103	907.44
3205-400	400	136	1455.32
3205-500	500	190	3961.05
3205-630	630	252	5924.88

3505 – SELF-CENTRING SCROLL CHUCK - 3 JAW



Steel, plain back, rear mount, 2 piece jaw C/W Set hard top reversible jaws & wrench. Ground working surfaces. Mounting from back with adapter plate.

Code	Diameter mm	Bore mm	List Price £
3505-125	125	35.5	553.70
3505-160	160	42	584.54
3505-200	200	55	701.16
3505-250	250	76	896.66
3505-315	315	103	1280.95
3505-400	400	136	2586.13
3505-500	500	190	5870.93
3505-630	630	252	8162.83

3275 – SELF-CENTRING SCROLL CHUCK - 3 JAW



Cast iron, plain back, front mount, 2 piece jaw C/W Set hard reversible jaws & wrench. Ground working surfaces. Mounting from back or front by using an adapter plate.

Code	Diameter mm	Bore mm	List Price £
3275-125	125	32	368.18
3275-160	160	42	409.62
3275-200	200	55	487.72
3275-250	250	76	661.47
3275-315	315	103	957.58
3275-400	400	136	1756.24
3275-500	500	190	3509.66
3275-630	630	252	4767.65

3266 – 3 JAW LEVER SCROLL CHUCK



For grinding twist drills and other cutting tools. Fine adjustment on sizes 125, 160 & 200mm C/W Set hard outside, hard inside jaws and lever.

Code	Diameter mm	List Price £
3266-80	80	530.21
3266-100	100	670.28
3266-125	125	782.78

3604 – SELF-CENTRING SCROLL CHUCK - 4 JAW



Cast iron, plain back, rear mount, solid jaw.
C/W Set hard outside, hard inside jaws & wrench.
Ground working surfaces. Mounting from back by using an adapter plate.

Code	Diameter mm	Bore mm	List Price £
3604-125	125	32	384.29
3604-160	160	42	423.02
3604-200	200	55	492.43
3604-250	250	76	613.40
3604-315	315	103	982.41
3604-400	400	136	1867.30
3604-500	500	190	4446.96
3604-630	630	252	7218.59

3704 – SELF CENTRING SCROLL CHUCK – 4 JAW



Steel, plain back, rear mount, solid jaw.
C/W Set hard outside, hard inside jaws & wrench.
Ground working surfaces. Mounting from back by using an adapter plate.

Code	Diameter mm	Bore mm	List Price £
3704-125	125	35.5	682.62
3704-160	160	42	627.21
3704-200	200	55	801.78
3704-250	250	76	952.85
3704-315	315	103	1440.95
3704-400	400	136	3410.47
3704-500	500	190	8297.36

4304 – INDEPENDENT CHUCK - 4 JAW



Cast iron, plain back, solid jaw. C/W Set hard solid reversible jaws & wrench. Ground working surfaces. Mounting from front or back with an adapter plate.

Code	Diameter mm	Bore mm	List Price £
4304-200	200	50	515.99
4304-250	250	65	590.78
4304-315	315	80	807.93
4304-400	400	100	1221.52
4304-500	500	125	2145.68
4304-630	630	160	2766.25

4306 – INDEPENDENT CHUCK – 4 JAW



Steel, plain back, solid jaw. C/W Set hard solid reversible jaws & wrench. Ground working surfaces. Mounting from front or back with an adapter plate.

Code	Diameter mm	Bore mm	List Price £
4306-100	100	25	397.02
4306-160	160	42	467.07
4306-200	200	50	701.37
4306-250	250	65	796.82
4306-315	315	80	1016.08
4306-400	400	100	1822.44
4306-500	500	125	2636.33
4306-630	630	160	4108.87

3804 – SELF CENTRING SCROLL CHUCK 6-JAW



Cast iron, plain back, rear mount, solid jaw.
C/W Set hard outside, hard inside jaws and wrench.
Ground working surfaces. Mounting from rear with an adapter plate.

Code	Size mm	Bore mm	List Price £
3804-200	200	55	1143.01
3804-250	250	76	1589.45
3804-315	315	103	2105.37
3804-400	400	136	3866.86

3864 – SELF CENTRING SCROLL CHUCK 6-JAW



Steel, fine adjustment chuck for use with fine adjustment adapter. Plain back, front mount.
C/W Set hard outside, hard inside jaws and wrench.

Code	Size mm	Bore mm	List Price £
3864-125	125	35	1040.62
3864-160	160	42	1126.14
3864-200	200	55	1142.74
3864-250	250	76	1539.68
3864-315	315	103	2320.29
3864-400	400	136	4436.50

3866 – 6-JAW LEVER SCROLL CHUCK



For grinding twist drills and other cutting tools.
Fine adjustment on sizes 125, 160 & 200mm
C/W Set hard solid jaws and operating lever.

Code	Size mm	List Price £
3866-80	80	682.31
3866-100	100	889.43
3866-125	125	1014.10



Best of 2019

3244 – 3 JAW SCROLL CHUCK CAMLOCK MOUNT



Cast iron, solid jaw, DIN 55029 Camlock mount (no adapter needed). C/W Set hard outside jaws, hard inside jaws & wrench. Ground working surfaces.

Code	Chuck Size mm	Camlock Mount	List Price £
3244-160-3	160	D1-3	492.46
3244-160-4	160	D1-4	462.54
3244-160-5	160	D1-5	492.46
3244-200-4	200	D1-4	569.32
3244-200-5	200	D1-5	569.32
3244-200-6	200	D1-6	569.32
3244-250-6	250	D1-6	782.78
3244-250-8	250	D1-8	782.78
3244-315-6	315	D1-6	1103.13
3244-315-8	315	D1-8	1103.13
3244-315-11	315	D1-11	1103.13

3544 – 3 JAW SCROLL CHUCK CAMLOCK MOUNT



Steel, solid jaw, DIN 55029 Camlock mount (no adapter needed). C/W Set hard outside jaws, hard inside jaws & wrench. Ground working surfaces.

Code	Chuck Size mm	Camlock Mount	List Price £
3544-125-3	125	D1-3	551.57
3544-125-4	125	D1-4	621.06
3544-160-4	160	D1-4	640.47
3544-160-5	160	D1-5	640.47
3544-200-4	200	D1-4	782.78
3544-200-5	200	D1-5	782.78
3544-200-6	200	D1-6	782.78
3544-250-6	250	D1-6	1067.49
3544-250-8	250	D1-8	1067.49
3544-315-6	315	D1-6	1530.04
3544-315-8	315	D1-8	1530.04
3544-315-11	315	D1-11	1530.04

4344 – 4 JAW INDEPENDENT CHUCK CAMLOCK MOUNT



Cast iron, solid jaw, DIN 55029 Camlock mount (no adapter needed). C/W Set hard reversible jaws & wrench. Ground working surfaces.

Code	Chuck Size mm	Camlock Mount	List Price £
4344-200-4	200	D1-4	556.41
4344-200-6	200	D1-6	657.57
4344-250-6	250	D1-6	686.12
4344-250-8	250	D1-8	810.87
4344-315-6	315	D1-6	864.54
4344-315-8	315	D1-8	864.54

3245 – 3 JAW SCROLL CHUCK CAMLOCK MOUNT



Cast iron, 2 piece jaw, DIN 55029 Camlock mount (no adapter needed). C/W Set hard reversible jaws & wrench. Ground working surfaces.

Code	Chuck Size mm	Camlock Mount	List Price £
3245-160-3	160	D1-3	569.32
3245-160-4	160	D1-4	547.06
3245-160-5	160	D1-5	547.06
3245-200-4	200	D1-4	800.03
3245-200-5	200	D1-5	800.03
3245-200-6	200	D1-6	800.03
3245-250-6	250	D1-6	942.95
3245-250-8	250	D1-8	942.95
3245-315-6	315	D1-6	1423.24
3245-315-8	315	D1-8	1423.24
3245-315-11	315	D1-11	1423.24

3545 – 3 JAW SCROLL CHUCK CAMLOCK MOUNT



Steel, 2 piece jaw, DIN 55029 Camlock mount (no adapter needed). C/W Set hard reversible jaws & wrench. Ground working surfaces.

Code	Chuck Size mm	Camlock Mount	List Price £
3545-125-3	125	D1-3	675.99
3545-125-4	125	D1-4	638.79
3545-160-4	160	D1-4	782.78
3545-160-5	160	D1-5	712.19
3545-200-4	200	D1-4	925.20
3545-200-5	200	D1-5	925.20
3545-200-6	200	D1-6	925.20
3545-250-6	250	D1-6	1280.95
3545-250-8	250	D1-8	1280.95
3545-315-6	315	D1-6	1779.12
3545-315-8	315	D1-8	1779.12
3545-315-11	315	D1-11	1779.12

3911 – COLLET CHUCK



For use with 5C collets, C/W wrench. Plain back front or rear mount.

Code	Diameter mm	Collet	List Price £
3911-125-5C	125	5C	407.18

3960 – COLLET CHUCK WITH FINE ADJUSTMENT



For use with 5C collets, C/W wrench, plain back mount. Will need to mount using fine adjustment adapter from the front.

Code	Diameter mm	Collet	List Price £
3960-125-5C	125	5C	565.90

8210-X - FULLY FINISHED ADAPTER



For use with plain back self centring scroll chucks, front or rear mount. DIN55026

Code	Chuck size mm	A mount	List Price £
8210-125-3A2-X	125	A2-3	112.33
8210-160-4A2-X	160	A2-4	168.30
8210-160-5A2-X	160	A2-5	163.90
8210-200-5A2-X	200	A2-5	158.10
8210-200-6A2-X	200	A2-6	173.47
8210-250-5A2-X	250	A2-5	196.68
8210-250-6A2-X	250	A2-6	196.68
8210-250-8A2-X	250	A2-8	196.68
8210-315-6A2-X	315	A2-6	321.67
8210-315-8A2-X	315	A2-8	321.67

For complete range of adapters including A, C & D type see main catalogue.

8230-X - FULLY FINISHED ADAPTER



For use with plain back self centring scroll chucks, front or rear mount. DIN55027

Code	Chuck size mm	C mount	List Price £
8230-160-4-X	160	C-4	144.63
8230-160-5-X	160	C-5	148.52
8230-160-6-X	160	C-6	144.63
8230-200-5-X	200	C-5	156.26
8230-200-6-X	200	C-6	156.26
8230-250-6-X	250	C-6	196.79
8230-250-8-X	250	C-8	196.79
8230-315-6-X	315	C-6	302.16
8230-315-8-X	315	C-8	269.79
8230-315-11-X	315	C-11	269.79

For complete range of adapters including A, C & D type see main catalogue.

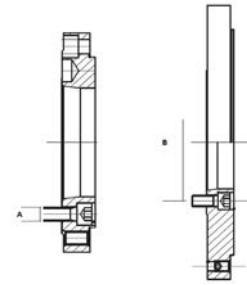
8240-X - FULLY FINISHED ADAPTER



For use with plain back self centring scroll chucks, front or rear mount. DIN55029

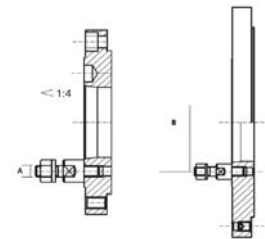
Code	Chuck size mm	Camlock mount	List Price £
8240-125-4-X	125	D1-4	160.18
8240-160-4-X	160	D1-4	181.00
8240-160-5-X	160	D1-5	208.10
8240-200-4-X	200	D1-4	201.20
8240-200-5-X	200	D1-5	228.27
8240-200-6-X	200	D1-6	201.20
8240-250-6-X	250	D1-6	271.50
8240-250-8-X	250	D1-8	271.50
8240-315-6-X	315	D1-6	392.31
8240-315-8-X	315	D1-8	358.69
8240-315-11-X	315	D1-11	358.69

For complete range of adapters including A, C & D type see main catalogue.



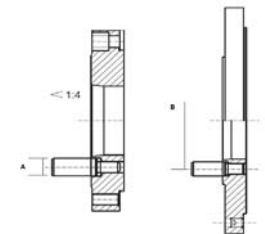
A TYPE MOUNT

Taper Size	A	B	Pcs/Set
3	M8	70.6	3
4	M10	82.6	3
5	M10	104.8	6
6	M12	133.4	6
8	M16	171.4	6
11	M20	235	6
15	M24	330.2	6



C TYPE MOUNT

Taper Size	A	B	Pcs/Set
3	M10x34	75	3
4	M10x39	85	3
5	M10x43	104.8	4
6	M12x50	133.4	4
8	M16x60	171.4	4
11	M20x75	235	6
15	M24x90	330	6



D TYPE MOUNT

Taper Size	A	B	Pcs/Set
3	14.2	70.6	3
4	15.9	82.6	3
5	19	104.8	6
6	22.2	133.4	6
8	25.4	171.4	6
11	30.2	235	6
15	35	330.2	6



Best of 2019

3295 – SELF-CENTRING SCROLL CHUCK - 3 JAW OIL COUNTRY CHUCK WITH LARGE BORE



Cast iron, plain back, rear mount, 2 piece jaws C/W Set base jaws, soft top jaws & wrench. High gripping forces and high accuracy. Ground working surfaces. Mounting from back with adapter plate.

Code	Diameter mm	Bore mm	
3295-400	400	220	1668.71
3295-500	500	320	3531.08
3295-660	660	406	5856.10

4317 – INDEPENDENT CHUCK – 4 JAW OIL COUNTRY CHUCK WITH LARGE BORE HD



Steel, A2 mount, 2 piece jaws. C/W Set base jaws, hard reversible top jaws & wrench. High gripping force and high accuracy for heavy duty operations. Ground working surfaces. Other sizes available.

Code	Diameter mm	Bore mm	Mount	
4317-20-15-8-HD	20"	8"	A2-15	4965.93
4317-25-15-10.5-HD	25"	10.5"	A2-15	6001.46
4317-25-20-10.5-HD	25"	10.5"	A2-20	6001.46
4317-25-20-12.5-HD	25"	12.5"	A2-20	5123.66
4317-32-20-12.5-HD	32"	12.5"	A2-20	P.O.A
4317-32-20-14.5-HD	32"	14.5"	A2-20	P.O.A

SJM – SOFT SOLID JAWS



For use with BISON 3 jaw self-centring chucks 32-- & 35-- series.

Code	Chuck size mm	List Price £
SJM 3200 3500-80	80	54.99
SJM 3200 3500-100	100	57.80
SJM 3200 3500-125	125	58.17
SJM 3200 3500-160	160	66.50
SJM 3200 3500-200	200	76.42
SJM 3200 3500-250	250	110.48
SJM 3200 3500-315	315	154.30
SJM 3200 3500-400	400	167.90
SJM 3200 3500-500	500	367.43
SJM 3200 3500-630	630	540.76

SGM – SOFT TOP JAWS



****FOR USE WITH CHUCKS WITH A TWO PIECE JAW****
For use with BISON 3 jaw self-centring chucks 32-- & 35-- series.

Code	Chuck size mm	List Price £
SGM 3200 3500-125	125	56.21
SGM 3200 3500-160	160	62.95
SGM 3200 3500-200	200	64.29
SGM 3200 3500-250	250	83.59
SGM 3200 3500-315	315	114.14
SGM 3200 3500-400	400	155.89
SGM 3200 3500-500	500	185.80
SGM 3200 3500-630	630	287.78

SJZ – HARD SOLID OUTSIDE JAWS



****HIGH STEP OF JAW TO CENTRE OF CHUCK****
For use with BISON 3 jaw self-centring chucks 32-- & 35-- series.

Code	Chuck size mm	List Price £
SJZ 3200 3500-80	80	70.78
SJZ 3200 3500-100	100	81.31
SJZ 3200 3500-125	125	85.40
SJZ 3200 3500-160	160	111.24
SJZ 3200 3500-200	200	114.65
SJZ 3200 3500-250	250	132.37
SJZ 3200 3500-315	315	212.10
SJZ 3200 3500-400	400	261.09
SJZ 3200 3500-500	500	638.88
SJZ 3200 3500-630	630	927.09

SJW – HARD SOLID INSIDE JAWS

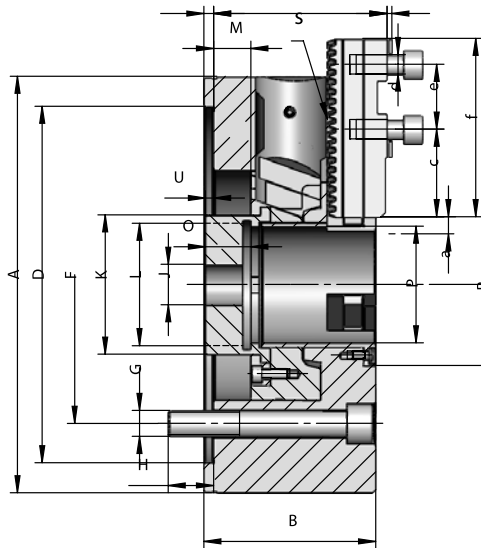


****HIGH STEP OF JAW TO OUTSIDE OF CHUCK****
For use with BISON 3 jaw self-centring chucks 32-- & 35-- series.

Code	Chuck size mm	List Price £
SJW 3200 3500-80	80	70.78
SJW 3200 3500-100	100	81.44
SJW 3200 3500-125	125	98.95
SJW 3200 3500-160	160	114.65
SJW 3200 3500-200	200	119.39
SJW 3200 3500-250	250	139.83
SJW 3200 3500-315	315	233.73
SJW 3200 3500-400	400	261.09
SJW 3200 3500-500	500	722.14
SJW 3200 3500-630	630	927.12

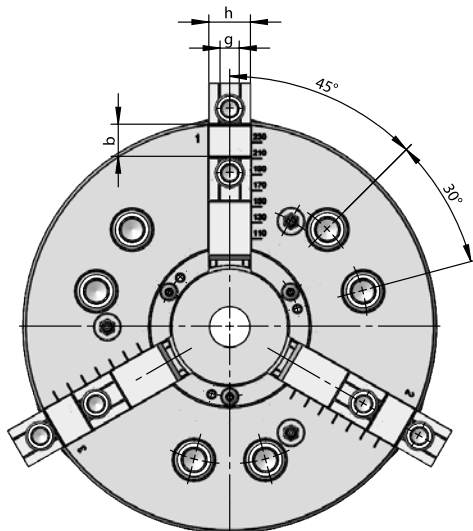
NEW

2305 POWER CHUCK WITH QUICK CHANGE JAW SYSTEM



(sizes being introduced throughout 2019)

Type		2305-200-45	2305-250-72	2305-315-91
A	mm	206	257	315
B	mm	89	106	106
C	mm	90	107	107
D H6	mm	170	220	300
E	mm	6	6	6
F	mm	133,4	171,4	235
G	-	6xM12	6xM16	6xM20
H	mm	20	28	31
J	mm	20	25	25
K	mm	57	86	108
L max.	-	M52x2	M80x2	M100x2
M (max. Drawbar stroke)	mm	20	23	23
O	mm	24	28	28
P	mm	45	72	91
R	mm	73	100	122
S Tooth pitch)	mm	4,8	6	6
T	mm	3	3	3
Umin.	mm	5	5	4
Umax.	mm	25	28	27
a (max. Jaw stroke)	mm	7,2	8,3	8,3
b	mm	20	20	20
c	mm	37	54	54
d	-	M8x1	M12x1.5	M12x1,5
e	mm	40	40	40
f	mm	90	110	110
g	mm	10	12	12
h	mm	22	26	26
Jaws type	-	F200	F250	F250
Max. pulling force	kN	45	60	60
Max. clamping force	kN	84	120	120
Max. speed	rpm	5500	4500	3500
Moment of inertia	kgm ²	0,04	0,31	1,9
Weight without top jaws	kg	20	35	54





Best of 2019

2405 - K POWER CHUCK



3 Jaw, 60° serrations, with through hole. Plain back will require an adapter to mount to machine. Compatible with Kitagawa jaws.

Code	Diameter mm	Bore mm	Jaw Stroke mm	List Price £
2405-160-45K	160	45	3.5	1341.59
2405-200-52K	200	52	5	1665.12
2405-250-75K	250	75	6	2322.47
2405-315-91K	315	91	6	3117.23

2405 - K ZW POWER CHUCK



3 Jaw, 60° serrations, with large through hole. Plain back will require an adapter to mount to machine. Compatible with Kitagawa jaws.

Code	Diameter mm	Bore mm	Jaw Stroke mm	List Price £
2405-160-53K	160	53	3.5	1950.05
2405-200-66K	200	66	5	1728.16
2405-250-81K	250	81	6	2729.92
2405-315-110K	315	110	6	3769.29

2605 - K POWER CHUCK

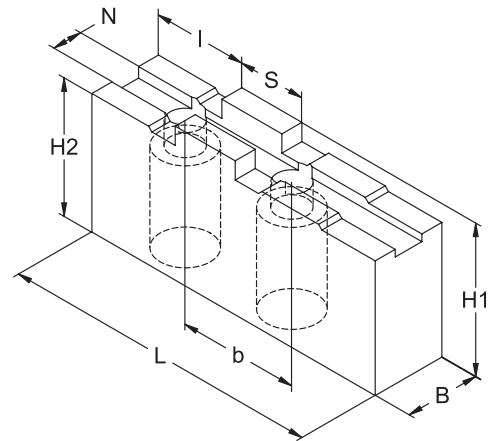


4 Jaw, 60° serrations, with through hole. Plain back will require an adapter to mount to machine. Compatible with Kitagawa jaws.

Code	Diameter mm	Bore mm	Jaw Stroke mm	List Price £
2605-160-45K	160	45	3.5	2085.36
2605-200-52K	200	52	5	2778.71
2605-250-75K	250	75	6	2955.95
2605-315-91K	315	91	6	4516.95

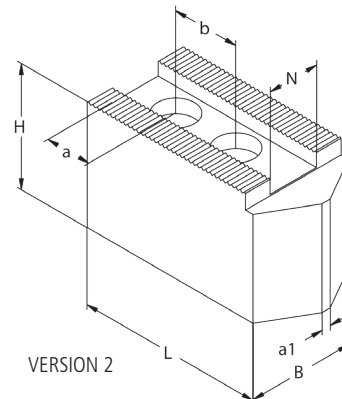
Available from our standard range of power chucks are 2, 3 & 4 jaw with through or without through hole, power chucks with integrated pneumatic cylinder, Wescot style power chucks and power chucks with gear transmission.

2305 - SOFT JAWS FOR POWER CHUCKS



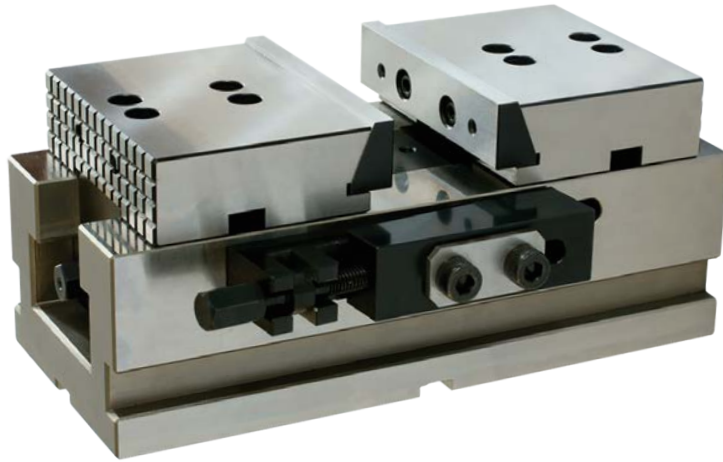
Code	Type	Chuck size mm	N	S	B	H ₁	H ₂	L	b	I	kg / set	List Price £
398525443000	SGM 200 F	2305-200	10	20	22	47	43	105	40	34	2,0	P.O.A
398525449700	SGM 250 F	2305-250;315	12	20	32	55	50	125	40	36	3,7	P.O.A

2405 - SOFT JAWS FOR POWER CHUCKS

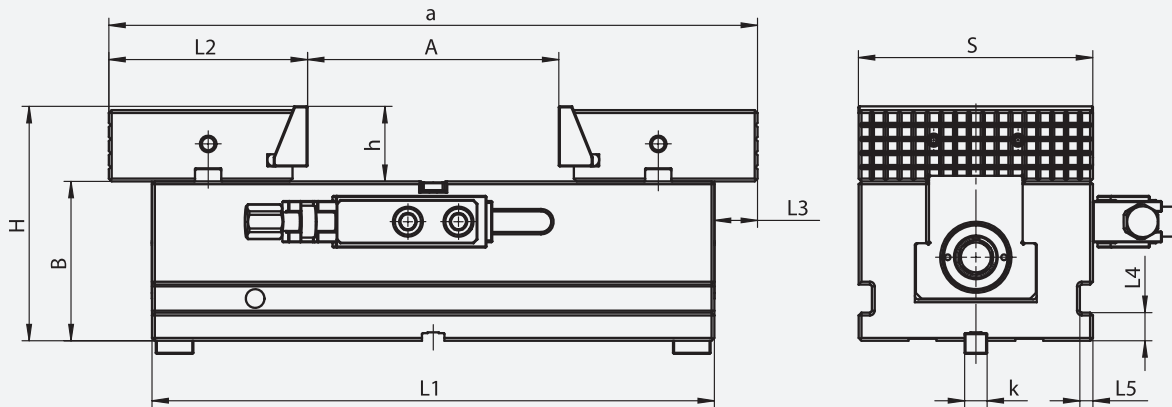


Code	Type	Chuck size mm	Version	Length mm	Width mm	Height mm	Slot width mm	Hole centres mm	Screw size	Serration	List Price £
398521511800	SGM 2405-160-45K	160	2	65	40	40	12	20	M10	1.5x60°	66.88
398521521000	SGM 2405-200-52K	200	2	95	40	40	14	25	M12	1.5x60°	89.49
398521531100	SGM 2405-250-75K	250	2	105	50	50	16	30	M12	1.5x60°	104.32
398521541300	SGM 2405-315-91K	315	2	110	50	50	21	30	M16	1.5x60°	155.04

ADJUSTABLE SELF-CENTERING VICE

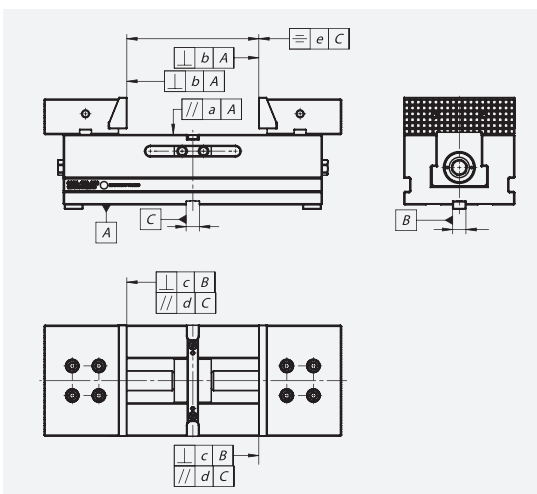


BISON are constantly improving to meet ever changing customer demands. We now introduce to the market our NEW 6651 compact self centering machine vice range giving accurate clamping of work pieces to the machine table.



Code	Type	S	B ±0.02	H	A max	L1	L2	L3 max	L4	L5	k	a min-max	h	Max. Clamping Force [kN]	Net weight [kg]	List Price £
326651230100	6651-100-230	100	72	102	65	230	101	21	15	7	12	205-270	30	24	15.5	P.O.A
326651240300	6651-125-300	125	85	125	130	300	300	23	15	7	12	215-345	40	29	28	P.O.A
326651250500	6651-150-350	150	95	145	175	350	350	26	18	8	18	225-400	50	32.8	43.7	P.O.A

Please call for the latest promotional price



These precision modular vices are available in three different jaw width sizes, and are ideal for the clamping of large or small work pieces on CNC machines, machining centres, and standard machines.

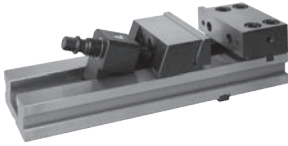
These vices also feature a self centering wedge mechanism, thus allowing the jaws to be locked and utilized across the vice body length in order to compensate for any component deformation when using more than one vice for clamping on the machine.

Code	Type	a	b	c	d	e
326651230100	6651-100-230	0.02	0.02	0.02	0.02	0.01
326651240300	6651-125-300	0.02	0.02	0.02	0.02	0.02
326651250500	6651-150-350	0.02	0.02	0.02	0.02	0.02



Best of 2019

6620 – PRECISION VICE



Designed for precision grinding and milling. Can be ganged or paired. Upgraded successor to the 6577 vice.

Code	Jaw width mm	O/all length mm	Opening mm	List Price £
6620-100-320-165	100	320	165	946.28
6620-125-335-165	125	335	165	1135.94
6620-150-425-210	150	425	210	1430.07
6620-150-475-260	150	475	260	1475.41
6620-150-520-305	150	520	305	1622.92
6620-200-535-260	200	535	260	2150.19
6620-200-585-310	200	585	310	2209.44
6620-200-635-360	200	635	360	2376.92

6622 – PRECISION VICE



Movable jaw element. For use with 6624. Revised and upgraded successor of 6568.

Code	Jaw width mm	Base length mm	List Price £
6622-150	150	210	1019.47
6622-200	200	240	1264.84

6910 – MACHINE VICE



Prismatic guidance of movable jaw, fully covered lead screw. Jaws hardened and ground for accuracy and repeatability. C/W adjustable end-stop, hand crank & slot nuts.

Code	Jaw width mm	Opening mm	List Price £
6910-105	105	75	740.54
6910-155	155	165	757.89
6910-210	210	205	1070.13

6624 – PRECISION VICE



Fixed jaw element. For use with 6622. Revised and upgraded successor of 6569-M.

Code	Jaw width mm	Base length mm	List Price £
6624-150	150	221.5	981.14
6624-200	200	253.5	1315.72

6530 – TWO ANGLE SWIVEL VICE



Up to 90° angle of incline and 360° swivel. Designed for milling and drilling, when two angle setting is required. C/W handcrank and slot nuts.

Code	Jaw width mm	Opening mm	List Price £
6530-100	100	80	412.41
6530-125	125	100	476.34
6530-160	160	125	633.95

6522 – TWO PIECE VICE



Facilitates the utilisation of the full length of the machine bed. C/W handcrank and slot nuts.

Code	Jaw width mm	O/all height mm	List Price £
6522-160	160	80	415.71
6522-200	200	100	562.04

6540 – QUICK ACTING VICE



Initial clamping by movable jaw. Final clamping by lever movement.

Code	Jaw width mm	Opening mm	List Price £
6540-125	125	150	484.38
6540-160	160	160	576.84

6542 – QUICK ACTING VICE



Clamping by single rotary movement of lever. V in fixed jaw for round work.

Code	Jaw width mm	Opening mm	List Price £
6542-80	80	80	248.48
6542-100	100	100	303.37

6512 – MACHINE VICE



For use on milling machines, drill presses, etc. Grooved jaw inserts. Lead screw protected against dirt & chips. C/W handcrank & slot nuts.

Code	Jaw width mm	Opening mm	List Price £
6512-100	100	80	235.47
6512-125	125	95	308.52
6512-160	160	125	443.53
6512-200	200	160	612.62
6512-250	250	200	1150.01

6516 – MACHINE VICE WITH HYDRAULIC SPINDLE



Built in hydraulic spindle makes operation of vice very easy. Adjustment of clamping range by means of two pins. C/W handcrank & slot nuts.

Code	Jaw width mm	Opening mm	List Price £
6516-M125	125	205	1428.71
6516-M160	160	280	1683.22
6516-M200	200	375	2662.75

6517 – CAMLOCK MACHINE VICE



Rear jaw can be positioned using a cam-locking system. Reversible jaw inserts smooth one side and grooved the other. C/W handcrank & slot nuts.

Code	Jaw width mm	Opening mm	List Price £
6517-M100	100	125	683.21
6517-M125	125	160	763.25
6517-M160	160	180	928.50
6517-M200	200	280	1510.36

6531 – SELF-CENTRING VICE



360° swivel base. Removable grooved jaw inserts. Designed for various types of milling. C/W handcrank & slot nuts.

Code	Jaw width mm	Opening mm	List Price £
6531-125	125	100	494.82
6531-160	160	125	564.79
6531-200	200	160	841.99

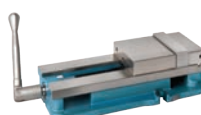
6546 – SHAFT HOLDING VICE



Can be used in horizontal and vertical position. Hardened and ground jaws & V block. C/W handcrank & slot nuts.

Code	Jaw length mm	Ø Capacity mm	List Price £
6546-100	100	10 – 83	634.22
6546-125	125	15 – 100	755.95
6546-160	160	50 – 160	1629.94

6523 – HOLD-TIGHT VICE



Jaws can be located in 4 different positions to increase capacity. For use on work that requires high accuracy and safe clamping. C/W handcrank & slot nuts.

Code	Jaw width mm	Opening mm (standard configuration)	List Price £
6523-155L	155	224	842.84

6543 – DRILL PRESS VICE



Vertical and horizontal V on fixed jaw. Ideal for drilling and light milling operations.

Code	Jaw width mm	Opening mm	List Price £
6543-85M	85	70	95.09
6543-100M	100	85	95.42
6543-120M	120	120	109.47
6543-150M	150	150	146.02

6710 – PNEUMATICALLY OPERATED VICE



Heavy duty machine vice with high clamping forces. Removable grooved jaw inserts, fitted with a safety valve.

Code	Jaw width mm	Opening mm	List Price £
6710-125	125	100	2830.45
6710-160	160	125	3013.79
6710-200	200	160	3209.03



5859 – ROTARY TABLE



Can be used vertically or horizontally.
Worm gear can be disengaged for rapid indexing.

Code	Table Ø mm	Worm ratio	List Price £
5859-160	160	1:60	2572.17
5859-200	200	1:60	2637.94
5859-250	250	1:90	3226.87
5859-320	320	1:90	3596.73

5901 & 5911 INDEXING FIXTURES



Horizontal / Vertical – Chuck not included
Compact design with two types of indexing;
1. Basic 2,3,4,6,8,12 and 24 divisions
2. Angular 360° in 1° increments
Indexing accuracy 2'
Compatible with plain back front mount chucks.

Code	Chuck size mm	Centre height mm	List Price £
5901-100	125	100	1469.34
5901-125	160	125	1522.25
5901-160	200	160	1815.71
5911-200	250	200	4055.36

5818 – TAILSTOCK



Designed for use with indexing fixtures & rotary tables.

Code	MT	Centre height mm	List Price £
5818-100	2	100	398.00
5818-125	2	125	411.84
5818-160	3	160	484.83
5818-200	4	200	608.87
5818-250	4	250	746.90

5819 – ADJUSTABLE HEIGHT TAILSTOCK



Designed for use with indexing fixtures & rotary tables. Height is adjusted by means of a screw, after adjustment the spindle is locked in a vertical position.

Code	MT	Centre height mm	List Price £
5819-95-130	2	95-130	884.40
5819-130-170	3	130-170	830.29
5819-170-200	3	170-200	845.22
5819-220-250	4	220-250	1283.91

5150 – ANGLE PLATES



Easily set at any angle between 0 - 90° in 5° graduations.

Code - size mm	T slot mm	Max work weight kg	List Price £
5150-250X315	14	100	922.38

5155 – ANGLE PLATES



Easily set at any angle between 0 - 90° in 5° graduations. Additional adjustment between 0 - 60° range by means of a gauge block.

Code - size mm	T slot mm	Max work weight kg	List Price £
5155-250X315	14	100	997.21

9210 – HAND PRESS



Manually operated.

Code	Capacity mm	O/all height when closed mm	List Price £
9210-485	250	485	561.75

1250 – HEAVY DUTY BENCH VICE



Covered lead screw to keep dirt out.
Rugged heavy duty design.

Code	Jaw width mm	Opening mm	List Price £
1250-63L	63	63	99.76
1250-80L	80	80	107.12
1250-100L	100	80	121.27
1250-125L	125	100	119.03
1250-150L	150	125	157.67
1250-175L	175	150	187.69

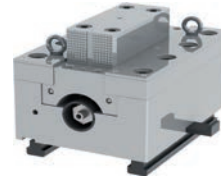
9171 – MSP – BOX JAWS



Set of 4 box jaws with Jakob power MSP screws. Steel body with hardened and ground guideways. Hardened clamping jaws HRC 57-60. High clamping force with minimum operator effort.

Code	Clamping force	Weight per jaw	Size mm LxWxH	List Price £
9171-430-20T MSP	200 kN	164 kg	430x330x150	P.O.A

9171 – MSPD – BOX JAWS



Set of 4 box jaws with Jakob power MSPD screws. Steel body with hardened and ground guideways. Hardened clamping jaws HRC 57-60. High clamping force with minimum operator effort.

Code	Clamping force	Weight per jaw	Size mm LxWxH	List Price £
9171-630-40T MSPD	400 kN	705 kg	630x448x410	P.O.A

9170 – FACE PLATE JAWS

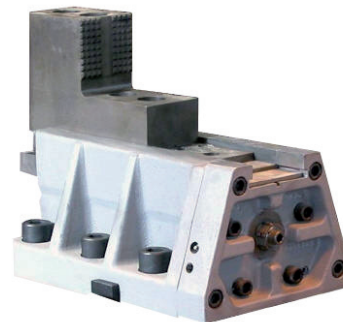
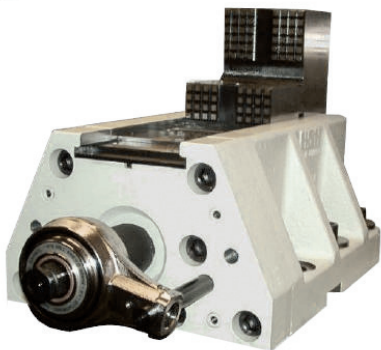
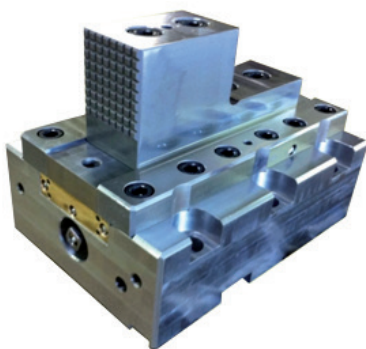


Primarily for use on face plates for holding irregular shaped parts. (Set of 4)

Code	O/all width mm	O/all height mm	Clamping force KN	List Price £
9170-150	130	159.8	28	1802.66
9170-200	140	169.8	35	2584.27

SPECIAL BOX JAWS

Special Box Jaws and Power Box Jaws can be designed and manufactured to meet your requirements. To start the process of obtaining a price, simply complete the special request form on page 241 of the 2014 main catalogue and fax or email or if you need some assistance, contact us and we can arrange for a sales engineer to call. Below are examples of special Box Jaws previously designed and manufactured.





Best of 2019

1114P – B1 VDI RADIAL HOLDER



B1 radial holder for square shank tools.

Code	VDI size	Tool Size mm	List Price £
1114-20P	20	12-16	96.97
1114-30P	30	16-20	88.42
1114-40P	40	20-25	108.74

1114L – B2 VDI RADIAL HOLDER



B2 radial holder for square shank tools.

Code	VDI size	Tool Size mm	List Price £
1114-20L	20	12-16	96.97
1114-30L	30	16-20	88.42
1114-40L	40	20-25	108.74

1115P – B3 VDI RADIAL HOLDER INVERTED



B3 right hand inverted radial holder for square shank tools.

Code	VDI size	Tool Size mm	List Price £
1115-20P	20	12-16	96.97
1115-30P	30	16-20	88.42
1115-40P	40	20-25	108.74

1115L – B4 VDI RADIAL HOLDER INVERTED



B4 left hand inverted radial holder for square shank tools

Code	VDI size	Tool Size mm	List Price £
1115-20L	20	12-16	96.97
1115-30L	30	16-20	88.42
1115-40L	40	20-25	108.74

1133P – C1 VDI AXIAL HOLDER



C1 axial holder for square shank tools.

Code	VDI size	Tool Size mm	List Price £
1133-20P	20	12-16	163.45
1133-30P	30	16-20	115.89
1133-40P	40	20-25	137.82

1133L – C2 VDI AXIAL HOLDER



C2 axial holder for square shank tools.

Code	VDI size	Tool Size mm	List Price £
1133-20L	20	12-16	163.45
1133-30L	30	16-20	115.89
1133-40L	40	20-25	137.82

1154P – VDI PART OFF HOLDER



VDI holder for part off blades right hand.

Code	VDI size	Part off blade mm	List Price £
1154-30-26P	30	26	343.76
1154-30-32P	30	32	343.76
1154-40-26P	40	26	364.76
1154-40-32P	40	32	364.76

1154L – VDI PART OFF HOLDER



VDI holder for part off blades left hand.

Code	VDI size	Part off blade mm	List Price £
1154-30-26L	30	26	343.76
1154-30-32L	30	32	343.76
1154-40-26L	40	26	364.76
1154-40-32L	40	32	364.76

1220 – E4 VDI ER COLLET CHUCK



E4 VDI ER collet chucks for holding round shanks.

Code	VDI size	ER collet	List Price £
1220-20-ER16	20	16	113.81
1220-30-ER25	30	25	135.06
1220-30-ER32	30	32	135.06
1220-40-ER25	40	25	160.68
1220-40-ER32	40	32	160.68

1224 – F1 VDI MORSE TAPER HOLDER



F1 VDI morse taper holders.

Code	VDI size	MT	List Price £
1224-20-1	20	1	98.81
1224-30-1	30	1	87.96
1224-30-2	30	2	87.96
1224-40-2	40	2	102.73
1224-40-3	40	3	102.73

1201 – A1 VDI BLANK HOLDER



A1 VDI blank toolholder.

Code	VDI size	Size mm WxHxD	List Price £
1201-20	20	100x60x65	97.89
1201-30	30	130x76x85	121.67
1201-40	40	151x96x100	168.30

1225 – Z2 VDI BLANKING PLUG



Z2 VDI blanking plug.

Code	VDI size	Size mm ØxL	List Price £
1225-20	20	50	32.78
1225-30	30	68	34.39
1225-40	40	83	39.48

1254 – E1 VDI SIDE LOCK HOLDER



E1 VDI side lock holders for holding boring bars, U drills etc.

Code	VDI size	Shank size mm	List Price £
1254-20-16	20	16	79.19
1254-20-20	20	20	79.19
1254-30-16	30	16	83.58
1254-30-20	30	20	83.58
1254-30-25	30	25	83.58
1254-30-32	30	32	83.58
1254-40-16	40	16	89.57
1254-40-20	40	20	89.57
1254-40-25	40	25	89.57
1254-40-32	40	32	89.57

1230 – VDI BORING BAR HOLDER



VDI boring bar holder.

Code	VDI size	Shank size mm	List Price £
1230-30-12	30	12	93.96
1230-30-16	30	16	93.96
1230-30-20	30	20	93.96
1230-40-16	40	16	102.50
1230-40-20	40	20	102.50
1230-40-25	40	25	102.50

1203 – A2 VDI BLANK HOLDERS



A2 VDI blank toolholder.

Code	VDI size	Size mm ØxL	List Price £
1203-20	20	50x70	49.63
1203-30	30	68x100	55.64
1203-40	40	83x120	73.18

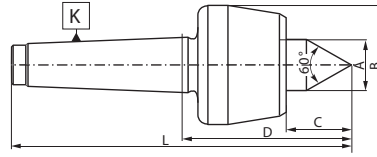
To view the full range of VDU holders please see section 5 of the main catalogue or visit www.bison-bial.com



8811R

REVOLVING TAILSTOCK CENTRES WITH 60° TIP ANGLE

- Large variety of models for different applications.
- Max concentricity deviation 0.003 to 0.01 (see chart).



KMT	Max. weight	Max. RPM	Precision				Standard				A	B	C	D	L
			Type	Max. runout	Part No.	List price £	Type	Max. runout	Part No.	List price £					
1	100	7000					8811R-1	0,005	800006761	139.61	15	36,0	17,0	60,5	114
2	200	7000	8811-2RP	0,003	800006762	185.07	8811R-2	0,005	800006763	139.61	20	45,0	23,5	64,5	128,5
3	400	6300	8811-3 RLP*	0,003	800006766	256.37	8811-3 RL*	0,005	800006623	163.76	22	50,0	27,5	70,0	151
3	500	5000	8811-3RP	0,003	800006764	256.37	8811R-3	0,005	800006765	163.76	25	60,0	30,5	79,0	160
4	800	3800	8811-4RP	0,003	800006767	373.81	8811R-4	0,005	800006624	256.37	32	70,0	40,0	101,5	204
5	2000	3000	8811-5RP	0,003	800006768	477.88	8811R-5	0,005	800006625	398.69	40	90,0	49,5	128	257,5
6	3500	2600					8811R-6	0,01	800006769	726.23	50	105,0	57,5	152	334
6	5000	1500					8811-6 RC**	0,01	800006770	1082.18	62,4	140,0	67,0	194	376

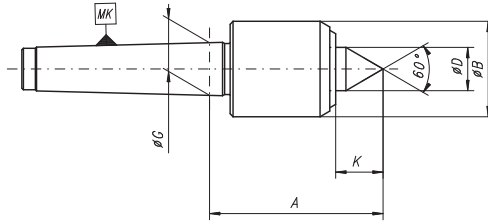
* Slim body design

** Heavy Duty

8812R

REVOLVING TAILSTOCK CENTRES WITH SMALLER BODY DIAMETER

- Small body with 60 degree tip angle for finishing, rough turning and grinding use.
- Max concentricity deviation 0.005 to 0.01 (see chart).

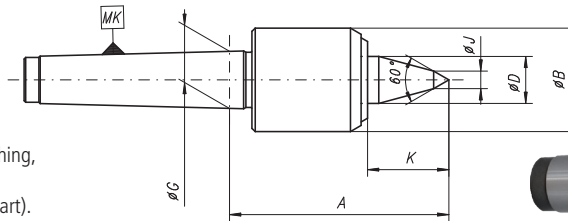


Type	KMT	A	B	D	G	K	Max. weight	Max. RPM	Max. runout	Part No.	List Price £
8812R-2	2	62	32	15	17,780	18	200	7000	0,005	800006024	119.54
8812R-3	3	62	34	15	23,825	18	400	7000	0,005	800006705	143.22
8812R-4	4	75,5	42	20	31,267	25	800	6300	0,005	800006706	187.89
8812R-5	5	104	58	30	44,399	34	1600	4300	0,01	800006707	261.33
8812R-6	6	143	80	42	63,348	49	3500	3000	0,02	800006708	454.26

8813R

REVOLVING TAILSTOCK CENTRES WITH SMALLER BODY DIAMETER WITH EXTENDED POINT

- Small body diameter with extended point for finishing, rough turning and grinding use.
- Max concentricity deviation 0.008 to 0.01 (see chart).

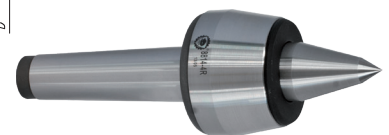
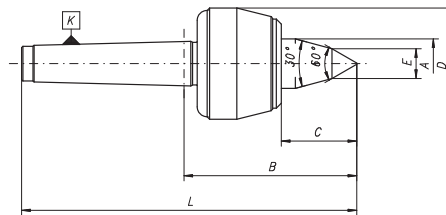


Type	MT	A	B	D	G	K	J	Max. weight	Max. RPM	Max. runout	Part No.	List Price £
8813R-2	2	73	32	15	17,780	29	10	170	7000	0,008	800006709	131.79
8813R-3	3	74	34	15	23,825	30	11	340	7000	0,008	800006710	150.42
8813R-4	4	88,5	42	20	31,267	38	13	700	6300	0,008	800006245	211.11
8813R-5	5	119	58	30	44,399	49	14	1400	4300	0,01	800006711	297.94
8813R-6	6	164	80	42	63,348	70	18	3000	3000	0,02	800006712	509.02

8814R

REVOLVING TAILSTOCK CENTRES WITH EXTENDED POINT

- For Heavy Duty use.
- Max concentricity deviation 0.005 to 0.010 (see chart).



Type	MT	A	B	C	D	E	L	Max. weight	Max. RPM	Max. runout	Part No.	List Price £
8814R-1	1	15	66,5	23,0	36	9	120,0	80	7000	0,010	800006536	116.61
8814R-2	2	20	74,5	33,5	45	10	138,5	140	7000	0,005	800006537	128.96
8814R-3	3	25	92,0	43,5	60	12	173,0	400	5000	0,005	800006538	149.09
8814R-4	4	32	113,5	52,0	70	14	216,0	500	3800	0,005	800006539	249.27
8814R-5	5	40	144,3	65,3	90	16	272,8	1200	3000	0,005	800005509	382.99
8814R-6	6	50	170,5	77,5	105	18	352,5	2500	2600	0,010	800006540	567.29

8811 – ROTATING CENTRE



Heavy duty precision rotating centre with 60° point.

Code	MT	Max weight kg	RPM	List Price £
8811-1-I	1	100	5000	81.03
8811-2-I	2	180	5000	85.29
8811-3-I	3	450	4000	108.97
8811-4-I	4	1000	3000	140.56
8811-5-I	5	1900	2500	216.37
8811-6-I	6	3700	2000	475.34

8824 – EXTENDED POINT ROTATING CENTRE



Rotating centre with radial compensation and adjustment of radial clearance.

Code	MT	Max weight kg	Point length mm	List Price £
8824-2	2	90	38.5	134.49
8824-3	3	180	47.5	148.54
8824-4	4	350	66.5	186.43
8824-5	5	600	86.5	208.38
8824-6	6	1300	94.5	394.04

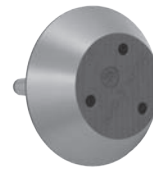
8825 – TUBE CENTRE



Rotating 60° truncated point for tube work.

Code	MT	Max weight kg	Size mm	List Price £
8825-1	1	100	20-50	88.74
8825-2	2	180	30-60	104.40
8825-2-1	2	300	30-80	129.81
8825-3	3	350	30-80	146.97
8825-3-1	3	550	40-100	178.26
8825-3-2	3	600	50-120	203.30
8825-4	4	600	40-100	162.63
8825-4-1	4	700	50-120	218.96
8825-4-2	4	700	70-140	243.97
8825-5	5	750	50-120	196.74
8825-5-1	5	750	100-170	276.82
8825-6	6	2000	180-292	964.30

8882 – TUBE CENTRE WITH INTERCHANGEABLE HEADS



Rotating 75° truncated interchangeable head. Items below supplied as 1 x body + 1 x head.

Code	MT	Max weight kg	Size mm	List Price £
8882-3-80-150	3	700	95-150	257.39
8882-3-80-200	3	700	145-200	353.58
8882-4-100-150	4	1000	95-150	297.66
8882-4-100-200	4	1000	145-200	370.55
8882-4-100-250	4	1000	195-250	410.95
8882-4-125-200	4	1500	145-200	370.55
8882-4-125-250	4	1500	195-250	441.88
8882-4-125-300	4	1500	245-300	482.27
8882-5-125-200	5	1500	145-200	418.59
8882-5-125-250	5	1500	195-250	482.27
8882-5-125-300	5	1500	245-300	603.08
8882-5-160-250	5	1800	195-250	499.25
8882-5-160-300	5	1800	245-300	603.08

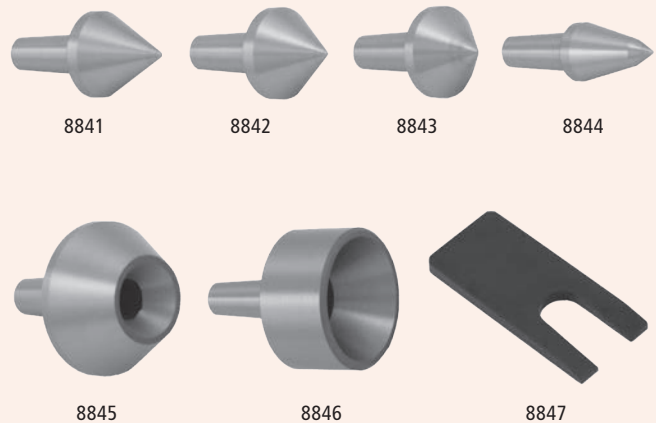
8831-KPL – ROTATING CENTRE WITH INTERCHANGEABLE INSERTS



Precision rotating centre with interchangeable inserts, 8841 60° point, 8842 75° point, 8843 90° point, 8844 60° extended point, 8845 tube centre, 8846 cone point and removal key.

Code	MT	Max weight kg	RPM	List Price £
8831-2/I KPL	2	70	5000	223.31
8831-3/I KPL	3	120	4000	241.86
8831-4/I KPL	4	280	3000	302.39
8831-5/I KPL	5	650	2500	482.27
8831-6/I KPL	6	1200	2000	883.76

INCLUDED IN THE SET



8841

8842

8843

8844

8845

8846

8847



Best of 2019

8711 – DEAD CENTRE 60° CARBIDE POINT



Code	MT	Ø mm	List Price £
8711-1	1	12.2	26.27
8711-2	2	18.0	26.92
8711-3	3	24.1	41.04
8711-4	4	31.6	60.66
8711-5	5	44.7	95.53
8711-6	6	63.8	136.47

8712 – DEAD CENTRE 60°



Code	MT	Ø mm	List Price £
8712-1	1	12.2	10.07
8712-2	2	18.0	12.25
8712-3	3	24.1	15.40
8712-4	4	31.6	25.47
8712-5	5	44.7	48.40
8712-6	6	63.8	115.23

8720 – DEAD CENTRE 60° WITH SPANNER FLATS



Code	MT	Ø mm	List Price £
8720-1	1	12.2	11.76
8720-2	2	18.0	13.95
8720-3	3	24.1	18.92
8720-4	4	31.6	30.57
8720-5	5	44.7	52.52
8720-6	6	63.8	126.63

8721 – DEAD CENTRE 60° WITH SPANNER FLATS AND CARBIDE POINT



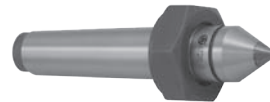
Code	MT	Ø mm	List Price £
8721-1	1	12.2	32.21
8721-2	2	18.0	32.21
8721-3	3	24.1	42.92
8721-4	4	31.6	67.45
8721-5	5	44.7	118.08
8721-6	6	63.8	236.12

8725 – DEAD CENTRE 60° WITH DRAW OFF NUT



Code	MT	Ø mm	List Price £
8725-1	1	12.2	25.47
8725-2	2	18.0	29.35
8725-3	3	24.1	33.84
8725-4	4	31.6	51.30
8725-5	5	44.7	84.18
8725-6	6	63.8	182.30

8726 – DEAD CENTRE 60° WITH DRAW OFF NUT AND CARBIDE POINT



Code	MT	Ø mm	List Price £
8726-1	1	12.2	42.03
8726-2	2	18.0	44.45
8726-3	3	24.1	58.27
8726-4	4	31.6	86.55
8726-5	5	44.7	112.07
8726-6	6	63.8	198.80

5362 – DRILL CHUCK ARBOR

MT to JT arbor for drill chucks.



Code	MT	JT	List Price £
5362-2-J2	2	2	8.61
5362-2-J3	2	3	8.61
5362-2-J33	2	33	8.61
5362-2-J6	2	6	8.61
5362-3-J2	3	2	9.94
5362-3-J3	3	3	9.94
5362-3-J33	3	33	9.94
5362-3-J6	3	6	9.94
5362-4-J2	4	2	14.80
5362-4-J3	4	3	14.80
5362-4-J6	4	6	14.80

1751 – REDUCTION DRILL SLEEVE

Hardened and ground internally and externally.



Code	Ext MT	Int MT	List Price £
1751-2-1	2	1	8.12
1751-3-1	3	1	10.43
1751-3-2	3	2	9.94
1751-4-1	4	1	13.71
1751-4-2	4	2	13.71
1751-4-3	4	3	13.71
1751-5-1	5	1	26.93
1751-5-2	5	2	26.93
1751-5-3	5	3	26.32
1751-5-4	5	4	26.32
1751-6-3	6	3	67.56
1751-6-4	6	4	67.56
1751-6-5	6	5	67.56

1226 – REDUCTION SLEEVE

For use with VDI and toolpost holders.



Code	OD ø mm	ID ø mm	Length mm	List Price £
1226-25-8	25	8	60	30.33
1226-25-10	25	10	60	30.33
1226-25-12	25	12	60	30.33
1226-25-16	25	16	60	27.89
1226-25-12	25	12	75	27.89
1226-25-16	25	16	75	33.72
1226-32-16	32	16	75	33.72
1226-32-20	32	20	75	36.03
1226-32-25	32	25	75	36.03
1226-40-20	40	20	75	38.45
1226-40-25	40	25	75	38.45
1226-40-32	40	32	75	38.45

5133 – KEYLESS DRILL CHUCK

Precision keyless drill chuck for industrial and CNC use.



Code	Capacity mm	Taper	Run out	List Price £
5133-10-J2	10	J2	0.04	115.60
5133-10-J33	10	J33	0.04	115.60
5133-13-J2	13	J2	0.04	124.08
5133-13-J6	13	J6	0.04	124.08
5133-13-J33	13	J33	0.04	124.08
5133-16-J6	16	J6	0.04	140.94
5133-16-J3	16	J3	0.04	140.94

1761 – EXTENSION DRILL SLEEVES

Hardened and ground internally and externally.



Code	Ext MT	Int MT	Length mm	List Price £
1761-1-1	1	1	145	12.25
1761-1-2	1	2	160	15.04
1761-1-3	1	3	183	18.08
1761-2-1	2	1	160	13.71
1761-2-2	2	2	175	15.04
1761-2-3	2	3	196	18.92
1761-2-4	2	4	221	27.89
1761-3-1	3	1	175	15.04
1761-3-2	3	2	194	16.98
1761-3-3	3	3	215	19.77
1761-3-4	3	4	240	28.98
1761-3-5	3	5	275	43.54
1761-4-1	4	1	200	19.77
1761-4-2	4	2	215	27.41
1761-4-3	4	3	240	27.41
1761-4-4	4	4	265	30.20
1761-4-5	4	5	300	59.31
1761-4-6	4	6	361	98.61
1761-5-1	5	1	200	34.81
1761-5-2	5	2	247	34.81
1761-5-3	5	3	268	34.81
1761-5-4	5	4	300	49.61
1761-5-5	5	5	335	64.04
1761-5-6	5	6	396	107.22
1761-6-1	6	1	200	79.08
1761-6-2	6	2	309	79.08
1761-6-3	6	3	330	79.08
1761-6-4	6	4	355	89.64
1761-6-5	6	5	390	89.64
1761-6-6	6	6	451	152.46

1875 – LATHE SOCKET TO MT

Cylindrical reduction sleeve to MT.



Code	OD ø mm	Int MT	Length mm	List Price £
1875-25-1-75	25	1	75	29.11
1875-25-2-75	25	2	75	29.11
1875-32-2-100	32	2	100	29.11
1875-32-3-100	32	3	100	29.11
1875-40-2-100	40	2	100	34.93
1875-40-3-100	40	3	100	34.93
1875-40-4-120	40	4	120	40.76



DIN 69871

7617 AD – ER COLLET CHUCK

DIN 69871 ER collet chucks (DIN6499)



Code	Taper	ER collet	Gauge length mm	List Price £
7617-30-ER16-60	30	16	60	49.61
7617-40-ER16-60	40	16	60	52.16
7617-40-ER25-60	40	25	60	52.16
7617-40-ER32-70	40	32	70	54.58
7617-40-ER32-130	40	32	130	54.58
7617-40-ER40-70	40	40	70	52.76
7617-50-ER32-70	50	32	70	76.29
7617-50-ER32-130	50	32	130	91.58
7617-50-ER40-80	50	40	80	76.29
7617-50-ER40-130	50	40	130	91.58

7617-S AD – ER SLIM COLLET CHUCK

DIN 69871 ER collet chucks (DIN6499)



Code	Taper	ER collet	Gauge length mm	List Price £
7617-40-ER16-100 S	40	16	100	58.10
7617-40-ER16-150 S	40	16	150	66.35
7617-50-ER16-100 S	50	16	100	108.68
7617-50-ER16-150 S	50	16	150	125.90

7625 AD – SIDE LOCK HOLDER

DIN 69871 side lock end mill holder.



Code	Taper	Bore mm	Gauge length mm	List Price £
7625-30-6-50	30	6	50	36.39
7625-30-10-50	30	10	50	36.39
7625-30-12-50	30	12	50	36.39
7625-30-16-63	30	16	63	36.39
7625-30-20-63	30	20	63	36.39
7625-40-6-50	40	6	50	38.69
7625-40-10-50	40	10	50	36.39
7625-40-12-50	40	12	50	36.39
7625-40-16-63	40	16	63	36.39
7625-40-20-63	40	20	63	36.39
7625-40-25-60	40	25	60	36.03
7625-50-6-63	50	6	63	49.61
7625-50-10-63	50	10	63	47.31
7625-50-12-63	50	12	63	47.31
7625-50-16-63	50	16	63	47.31
7625-50-20-63	50	20	63	47.31
7625-50-25-60	50	25	60	50.82
7625-50-32-70	50	32	70	58.34

Long gauge lengths also available.

7369 A – SHELL MILL ADAPTER

DIN 69871 shell mill adapter for holding face mills.



Code	Taper	Spigot mm	Gauge length mm	List Price £
7369-30-16-35	30	16	35	52.76
7369-30-22-35	30	22	35	52.76
7369-30-27-60	30	27	60	52.76
7369-40-22-60	40	22	60	49.73
7368-40-22-120	40	22	120	59.56
7369-40-27-60	40	27	60	50.82
7369-40-27-120	40	27	120	61.01
7369-40-32-60	40	32	60	53.25
7369-40-32-120	40	32	120	64.17
7369-50-22-60	50	22	60	65.37
7369-50-22-110	50	22	110	78.48
7369-50-27-60	50	27	60	65.37
7369-50-27-110	50	27	110	78.48
7369-50-32-60	50	32	60	70.23
7369-50-32-110	50	32	110	84.30

To view the full range of spindle tooling please refer to section 6 of the main catalogue visit www.bison-bial.com

DIN 69871

1681 AD – MT ADAPTER



DIN 69871 morse taper adapters for drills and reamers.

Code	Taper	MT	Gauge length mm	List Price £
1681-30-1-50	30	1	50	36.88
1681-30-2-60	30	2	60	36.88
1681-30-3-80	30	3	80	36.88
1681-40-1-50	40	1	50	36.39
1681-40-2-50	40	2	50	36.39
1681-40-3-70	40	3	70	36.39
1681-40-4-95	40	4	95	40.03
1681-50-1-45	50	1	45	54.03
1681-50-2-60	50	2	60	54.03
1681-50-3-65	50	3	65	55.57
1681-50-4-95	50	4	95	56.59
1681-50-5-105	50	5	105	61.07

Long gauge lengths also available.

2191 A – BLANK ADAPTER



DIN 69871 machineable blank adapter.

Code	Taper	Ø mm	Length mm	List Price £
2191-40-40-280	40	40	280	82.61
2191-40-63-280	40	63	280	82.61
2191-50-50-330	50	50	330	150.28
2191-50-80-330	50	80	330	150.28

7630 – SHRINK FIT HOLDERS



DIN 69871 for use with tools with cylindrical shank with h6 tolerance.

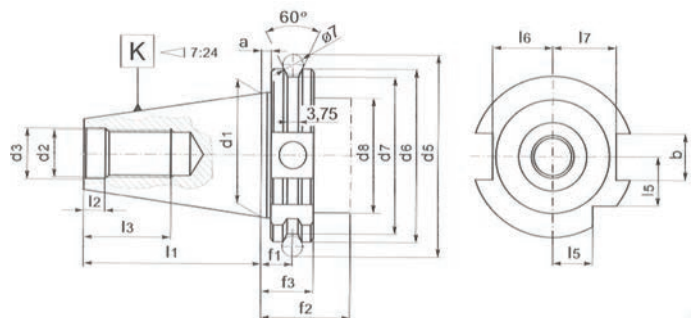
Code	Taper	Bore mm	Gauge length mm	List Price £
7630-40-6-80	40	6	80	111.80
7630-40-10-80	40	10	80	112.55
7630-40-12-80	40	12	80	112.55
7630-40-16-80	40	16	80	112.55
7630-40-20-80	40	20	80	112.55
7630-40-25-100	40	25	100	112.55
7630-50-6-80	50	6	80	191.89
7630-50-10-80	50	10	80	191.89
7630-50-12-80	50	12	80	191.89
7630-50-16-80	50	16	80	191.89
7630-50-20-80	50	20	80	191.89
7630-50-25-100	50	25	100	191.89
7630-50-32-100	50	32	100	191.89

7655 A – KEYLESS DRILL CHUCK



DIN 69871 keyless drill chuck.

Code	Taper	Capacity mm	Gauge length mm	List Price £
7655-40-1-13-87	40	1-13	87	187.16
7655-40-3-16-106	40	3-16	106	199.65
7655-50-1-13-87	50	1-13	87	217.36
7655-50-3-16-90	50	3-16	90	231.92



For all sizes and dimensions see main catalogue.

To view the full range of spindle tooling please refer to section 6 of the main catalogue visit www.bison-bial.com



BT MAS 403

7626 AD – ER COLLET CHUCK



BT ER collet chucks (DIN6499).

Code	Taper	ER collet	Gauge length mm	List Price £
7626-30-ER16-60	30	16	60	49.61
7626-30-ER25-60	30	25	60	50.70
7626-40-ER16-60	40	16	60	50.70
7626-40-ER25-60	40	25	60	47.31
7626-40-ER25-130	40	25	130	70.96
7626-40-ER32-70	40	32	70	49.73
7626-40-ER32-130	40	32	130	54.58
7626-40-ER40-70	40	40	70	52.76
7626-50-ER32-70	50	32	70	77.15
7626-50-ER32-130	50	32	130	92.55
7626-50-ER40-80	50	40	80	77.15
7626-50-ER40-130	50	40	130	92.55

7626-S AD – ER SLIM COLLET CHUCK



BT ER collet chucks (DIN6499).

Code	Taper	ER collet	Gauge length mm	List Price £
7626-40-ER16-100 S	40	16	100	155.99
7626-40-ER16-150 S	40	16	150	164.24
7626-50-ER16-100 S	50	16	100	206.56
7626-50-ER16-150 S	50	16	150	223.79

7388 A – SHELL MILL ADAPTER



BT shell mill adapters for holding face mills.

Code	Taper	Spigot mm	Gauge length mm	List Price £
7388-30-16-43	30	16	43	49.61
7388-30-22-43	30	22	43	49.61
7388-30-27-43	30	27	43	50.58
7388-40-22-52	40	22	52	49.73
7388-40-22-120	40	22	120	59.56
7388-40-27-52	40	27	52	50.82
7388-40-27-120	40	27	120	61.01
7388-40-32-52	40	32	52	53.25
7388-40-32-120	40	32	120	64.17
7388-50-22-65	50	22	65	65.37
7388-50-22-110	50	22	110	78.48
7388-50-27-65	50	27	65	65.37
7388-50-27-110	50	27	110	78.48
7388-50-32-65	50	32	65	70.23
7388-50-32-110	50	32	110	84.30

7624 – SIDE LOCK HOLDER



BT side lock end mill holder.

Code	Taper	Bore mm	Gauge length mm	List Price £
7624-30-6-50	30	6	50	39.54
7624-30-10-50	30	10	50	39.54
7624-30-12-50	30	12	50	39.54
7624-30-16-63	30	16	63	39.54
7624-30-20-63	30	20	63	39.54
7624-40-6-50	40	6	50	38.69
7624-40-10-63	40	10	63	36.39
7624-40-12-63	40	12	63	36.39
7624-40-16-63	40	16	63	36.39
7624-40-20-63	40	20	63	36.39
7624-40-25-60	40	25	60	36.03
7624-50-6-63	50	6	63	64.77
7624-50-10-63	50	10	63	62.46
7624-50-12-63	50	12	80	62.46
7624-50-16-80	50	16	80	62.46
7624-50-20-80	50	20	80	59.44
7624-50-25-60	50	25	60	64.28
7624-50-32-70	50	32	70	61.01

Long gauge lengths also available.

To view the full range of spindle tooling please refer to section 6 of the main catalogue visit www.bison-bial.com

BT MAS 403

1661 AD – MT ADAPTER



BT morse taper adapters for drills and reamers.

Code	Taper	MT	Gauge length mm	List Price £
1661-30-1-50	30	1	50	36.88
1661-30-2-60	30	2	60	36.88
1661-30-3-79	30	3	79	36.88
1661-40-1-50	40	1	50	36.39
1661-40-2-50	40	2	50	36.39
1661-40-3-70	40	3	70	36.39
1661-40-4-95	40	4	95	40.03
1661-50-1-45	50	1	45	55.67
1661-50-2-60	50	2	60	55.67
1661-50-3-65	50	3	65	55.67
1661-50-4-95	50	4	95	61.15
1661-50-5-105	50	5	105	62.95

Long gauge lengths also available.

7632 – SHRINK FIT HOLDERS



BT for use with tools with cylindrical shank with h6 tolerance.

Code	Taper	Bore mm	Gauge length mm	List Price £
7632-40-6-90	40	6	90	112.55
7632-40-10-90	40	10	90	112.55
7632-40-12-90	40	12	90	112.55
7362-40-16-90	40	16	90	112.55
7632-40-20-90	40	20	90	112.55
7632-40-25-100	40	25	100	112.55
7632-50-6-100	50	6	100	191.89
7632-50-10-100	50	10	100	191.89
7632-50-12-100	50	12	100	191.89
7632-50-16-100	50	16	100	191.89
7632-50-20-100	50	20	100	191.89
7632-50-25-110	50	25	110	191.89
7632-50-32-110	50	32	110	191.89

Long gauge lengths also available.

7656 A – KEYLESS DRILL CHUCK



BT keyless drill chuck.

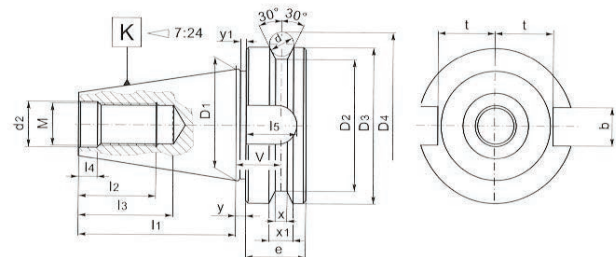
Code	Taper	Capacity mm	Gauge length mm	List Price £
7656-40-13-95	40	1-13	95	187.16
7656-40-16-100	40	3-16	100	199.65
7656-50-13-105	50	1-13	105	217.36
7656-50-16-110	50	3-16	110	231.92

2192 A – BLANK ADAPTER



BT machineable blank adapter.

Code	Taper	Ø mm	Length mm	List Price £
2192-40-40-280	40	40	280	82.61
2192-40-63-280	40	63	280	82.61
2192-50-50-330	50	50	330	150.28
2192-50-80-330	50	80	330	150.28



For all sizes and dimensions see main catalogue.

To view the full range of spindle tooling please refer to section 6 of the main catalogue visit www.bison-bial.com



DIN 2080

7616 – COLLET CHUCK



DIN 2080 ER collet chucks (DIN6499).

Code	Taper	ER collet	Gauge length mm	List Price £
7616-30-ER16-50	30	16	50	49.61
7616-30-ER32-50	30	32	50	49.61
7616-40-ER25-60	40	25	60	49.61
7616-40-ER32-60	40	32	60	49.61
7616-40-ER32-130	40	32	130	58.10
7616-40-ER40-60	40	40	60	52.03
7616-50-ER32-70	50	32	70	84.78
7616-50-ER32-130	50	32	130	101.76
7616-50-ER40-70	50	40	70	84.78
7616-50-ER40-130	50	40	130	101.76

7616 QC – ER QC COLLET CHUCK



DIN 2080 quick change collet chucks (DIN6499).

Code	Taper	ER collet	Gauge length mm	List Price £
7616-30-ER16-50 QC	30	16	50	65.50
7616-30-ER32-50 QC	30	32	50	68.90
7616-40-ER16-100 QC	40	16	100	80.42
7616-40-ER32-60 QC	40	32	60	82.85

7311 – SHELL MILL ADAPTER



DIN 2080 shell mill adapters for holding face mills.

Code	Taper	Spigot mm	Gauge length mm	List Price £
7311-30-16-35	30	16	35	48.15
7311-30-22-35	30	22	35	48.15
7311-30-27-35	30	27	35	50.21
7311-40-22-37	40	22	37	50.58
7311-40-27-37	40	27	37	52.03
7311-40-32-37	40	32	37	53.85
7311-50-22-40	50	22	40	71.45
7311-50-27-40	50	27	40	71.45
7311-50-32-40	50	32	40	76.17

7311 QC – QC SHELL MILL ADAPTER



DIN 2080 quick change shell mill adapters for holding face mills.

Code	Taper	Spigot mm	Gauge length mm	List Price £
7311-30-16-45 QC	30	16	45	57.25
7311-30-22-45 QC	30	22	45	57.25
7311-30-27-45 QC	30	27	45	58.47
7311-40-22-50 QC	40	22	50	55.56
7311-40-27-50 QC	40	27	50	54.58
7311-40-32-50 QC	40	32	50	59.31

7620 – SIDE LOCK HOLDER



DIN 2080 side lock end mill holder.

Code	Taper	Bore mm	Gauge length mm	List Price £
7620-30-6-40	30	6	40	40.03
7620-30-10-40	30	10	40	40.03
7620-30-12-40	30	12	40	40.03
7620-30-16-50	30	16	50	40.03
7620-30-20-63	30	20	63	40.03
7620-40-6-50	40	6	50	42.45
7620-40-10-50	40	10	50	40.03
7620-40-12-50	40	12	50	40.03
7620-40-16-63	40	16	63	40.03
7620-40-20-63	40	20	63	40.03
7620-40-25-60	40	25	60	44.88
7620-50-6-63	50	6	63	60.53
7620-50-10-63	50	10	63	58.10
7620-50-12-63	50	12	63	58.10
7620-50-16-63	50	16	63	58.10
7620-50-20-63	50	20	63	63.92
7620-50-25-60	50	25	60	60.65
7620-50-32-70	50	32	70	70.23

7620 QC – QC SIDE LOCK HOLDER



DIN 2080 side lock end mill holder.

Code	Taper	Bore mm	Gauge length mm	List Price £
7620-30-6-50 QC	30	6	50	44.03
7620-30-10-50 QC	30	10	50	44.03
7620-30-12-50 QC	30	12	50	44.03
7620-30-16-63 QC	30	16	63	44.03
7620-30-20-63 QC	30	20	63	44.03
7620-40-6-50 QC	40	6	50	42.45
7620-40-10-50 QC	40	10	50	40.03
7620-40-12-50 QC	40	12	50	40.03
7620-40-16-63 QC	40	16	63	40.03
7620-40-20-63 QC	40	20	63	40.03
7620-40-25-85 QC	40	25	85	47.06

To view the full range of spindle tooling please refer to section 6 of the main catalogue visit www.bison-bial.com

DIN 2080

1679 – MT ADAPTER



DIN 2080 morse taper adapters for drills and reamers.

Code	Taper	MT	Gauge length mm	List Price £
1679-30-1-50	30	1	50	43.06
1679-30-2-50	30	2	50	43.06
1679-30-3-72	30	3	72	43.06
1679-40-1-50	40	1	50	52.03
1679-40-2-50	40	2	50	52.03
1679-40-3-65	40	3	65	52.03
1679-40-4-95	40	4	95	53.98
1679-50-1-45	50	1	45	77.15
1679-50-2-60	50	2	60	77.15
1679-50-3-65	50	3	65	77.15
1679-50-4-70	50	4	70	83.69
1679-50-5-105	50	5	105	92.06

Long gauge lengths also available.

1679 QC – MT QC ADAPTER



DIN 2080 quick change morse taper adapters for drills and reamers.

Code	Taper	MT	Gauge length mm	List Price £
1679-30-1-50 QC	30	1	50	43.06
1679-30-2-50 QC	30	2	50	43.06
1679-30-3-72 QC	30	3	72	43.06
1679-40-1-50 QC	40	1	50	52.03
1679-40-2-50 QC	40	2	50	52.03
1679-40-3-65 QC	40	3	65	52.03
1679-40-4-95 QC	40	4	95	53.98

Long gauge lengths also available.

7657 – KEYLESS DRILL CHUCK



DIN 2080 keyless drill chuck.

Code	Taper	Capacity mm	Gauge length mm	List Price £
7657-40-13-88	40	1-13	88	187.16
7657-40-16-99	40	3-16	99	199.65
7657-50-13-85	50	1-13	85	217.36
7657-50-16-89	50	3-16	89	231.92

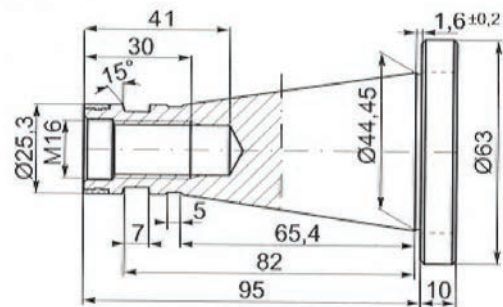
2190 – BLANK ADAPTER



DIN 2080 machineable blank adapter.

Code	Taper	Ø mm	Length mm	List Price £
2190-40-40-280	40	40	280	90.24
2190-40-63-280	40	63	280	90.24
2190-50-50-330	50	50	330	149.80
2190-50-80-330	50	80	330	149.80

Long milling arbors available on request.

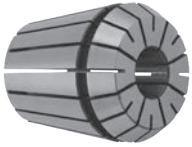


For all sizes and dimensions see main catalogue.

To view the full range of spindle tooling please refer to section 6 of the main catalogue visit www.bison-bial.com

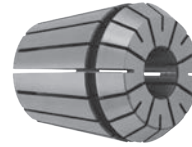


7618 – ER COLLETS



ER collets DIN 6499.

Code – ER size	ER	Gripping range mm	List Price £
7618	16	3-2	10.19
7618	16	4-3	10.19
7618	16	5-4	10.19
7618	16	6-5	10.19
7618	16	7-6	10.19
7618	16	8-7	10.19
7618	16	9-8	10.19
7618	16	10-9	10.19
7618	20	3-2	10.56
7618	20	4-3	10.56
7618	20	5-4	10.56
7618	20	6-5	10.56
7618	20	7-6	10.56
7618	20	8-7	10.56
7618	20	9-8	10.56
7618	20	10-9	10.56
7618	20	11-10	10.56
7618	20	12-11	10.56
7618	20	13-12	10.56
7618	25	3-2	10.92
7618	25	4-3	10.92
7618	25	5-4	10.92
7618	25	6-5	10.92
7618	25	7-6	10.92
7618	25	8-7	10.92
7618	25	9-8	10.92
7618	25	10-9	10.92
7618	25	11-10	10.92
7618	25	12-11	10.92
7618	25	13-12	10.92
7618	25	14-13	10.92
7618	25	15-14	10.92
7618	25	16-15	10.92
7618	32	3-2	11.76
7618	32	4-3	11.76
7618	32	5-4	11.76
7618	32	6-5	11.76
7618	32	7-6	11.76
7618	32	8-7	11.76
7618	32	9-8	11.76
7618	32	10-9	11.76
7618	32	11-10	11.76
7618	32	12-11	11.76
7618	32	13-12	11.76
7618	32	14-13	11.76
7618	32	15-14	11.76
7618	32	16-15	11.76
7618	32	17-16	11.76
7618	32	18-17	11.76
7618	32	19-18	11.76
7618	32	20-19	11.76
7618	40	3-2	17.15
7618	40	4-3	14.56
7618	40	5-4	14.56
7618	40	6-5	14.56
7618	40	7-6	14.56
7618	40	8-7	14.56
7618	40	9-8	14.56
7618	40	10-9	14.56
7618	40	11-10	14.56
7618	40	12-11	14.56
7618	40	13-12	14.56



ER collets DIN 6499 continued.

Code – ER size	ER	Gripping range mm	List Price £
7618	40	14-13	14.56
7618	40	15-14	14.56
7618	40	16-15	14.56
7618	40	17-16	14.56
7618	40	18-17	14.56
7618	40	19-18	14.56
7618	40	20-19	14.56
7618	40	21-20	14.56
7618	40	22-21	14.56
7618	40	23-22	14.56
7618	40	24-23	14.56
7618	40	25-24	14.56
7618	40	26-25	14.56

7812 – ER COLLET CHUCK

Straight shank ER collect chuck DIN 6499.



Code	Shank ø mm	Length mm	ER	List Price £
7812-16-ER16-160	16	160	16	45.49
7812-20-ER16-100	20	100	16	45.73
7812-20-ER16-160	20	160	16	45.73

7815 –ER COLLET CHUCK

Straight shank ER collet chuck DIN 6499.



Code	Shank ø mm	Length mm	ER	List Price £
7815-32-ER32-110	32	110	32	44.88
7815-40-ER32-117	40	117	32	48.15

7618-KPL – ER COLLET CHUCK SETS

ER collet sets DIN 6499.



Code	ER	Range mm	No. in set	List Price £
800001905	16	2-10	8	96.43
800001906	20	2-13	11	130.15
800001907	25	2-16	14	166.78
800001908	32	2-20	18	224.76
800001909	40	2-26	24	362.67

3911 – 5C COLLET CHUCK



For use with 5C collets, C/W wrench, plain back mount.

Code	Size mm	Collet	List Price £
3911-125-5C	125	5C	407.18

Will be replaced by 3975 when stocks run out.

8240-X - FULLY FINISHED ADAPTER



For use with plain back self-centring scroll chucks DIN 55029 Camlock mount.

Code	Chuck size mm	Camlock mount	List Price £
8240-125-4-X	125	D1-4	160.18
8240-125-6-X	125	D1-6	P.O.A

Adapters for A and C mount also available.

3960 – 5C COLLET CHUCK FINE ADJUSTMENT



For use with 5C collets, C/W wrench, fine adjustment plain back mount.

Code	Size mm	Collet	List Price £
3960-125-5C	125	5C	565.9

8245 - FULLY FINISHED ADAPTER



For use with fine adjustment plain back self-centring scroll chucks DIN 55029 Camlock mount.

Code	Chuck size mm	Camlock mount	List Price £
8245-125-4	125	D1-4	218.59
8245-125-5	125	D1-5	239.64
8245-125-6	125	D1-6	P.O.A

Adapters for A and C mount also available.

3000 – 5C COLLETS

5C (385E) collets.



Code	Size mm	List Price £
3000-3000-5C-3	3	18.27
3000-3000-5C-4	4	18.27
3000-3000-5C-5	5	18.27
3000-3000-5C-6	6	18.27
3000-3000-5C-7	7	18.27
3000-3000-5C-8	8	18.27
3000-3000-5C-9	9	18.27
3000-3000-5C-10	10	18.27
3000-3000-5C-11	11	18.27
3000-3000-5C-12	12	18.27
3000-3000-5C-13	13	18.27
3000-3000-5C-14	14	18.27
3000-3000-5C-15	15	18.27
3000-3000-5C-16	16	18.27
3000-3000-5C-17	17	18.27
3000-3000-5C-18	18	18.27
3000-3000-5C-19	19	18.27
3000-3000-5C-20	20	18.27
3000-3000-5C-21	21	18.27
3000-3000-5C-22	22	18.27
3000-3000-5C-23	23	18.27
3000-3000-5C-24	24	18.27
3000-3000-5C-25	25	18.27

3000 – 5C COLLET SETS

5C (385E) collets.



Code	Size mm	Collets in Set	List Price £
3000-3000-5C.26 KP	3-26	24	450.66
3000-3000-5C.25 KP	3-25	45	852.61



SPARES FOR TOOLPOSTS AND HOLDERS

Product Code	Code	Description	List Price £
800003149	KL 4414-62 HEX L U-6866/0	T.0, T.1, T.1X Hex Wrench	15.25
800003118	KL 4414-82 HEX L U-6178/0	T.2, T.2T Hex Wrench	17.74
800003150	KL4414-100 HEX L U-6874/0	T.3, T.3HX Hex Wrench	21.49
800003029	KL 4414-62X51	T.0, T.1, T.1X T-Wrench	20.24
800003030	KL 4414-82X71	T.2, T.2T T-Wrench	21.49
800003028	KL4414-100X108	T.3, T.3HX T-Wrench	22.86
800003148	U-6860/0	T.0, T.1, T.1X Clamp Bolt	32.85
800003117	U-6175/0	T.2 Clamp Bolt	38.11
800003105	U-5757/0	T.2T Clamp Bolt	41.85
800003740	U-6868/0	T.3, T.3HX Clamp Bolt	41.85
800003147	U-6859/0	T.0, T.1, T.1X Clamp Pad	13.86
800003748	U-6174/0	T.2 Clamp Pad	8.37
800003104	U-5756/0	T.2T Clamp Pad	16.49
800003749	U-6867/0	T.3, T.3HX Clamp Pad	13.24
800003151	U-6876/0	T.0, T.1, T.1X Stop	15.25
800003106	U-5762/0	T.2, T.2T Stop	15.25
800003154	U-6880/0	T.3, T.3HX Stop	17.74
800003153	U-6877/1	T.0, T.1, T.1X Toolholder Sq-Head Screws	2.54
800003160	U-7386/1	T.2, T.2T Toolholder Sq-Head Screws	3.86
800003156	U-6881/1	T.3, T.3HX Toolholder Sq-Head Screws	5.08



HEX WRENCH



T-WRENCH



CLAMP BOLT



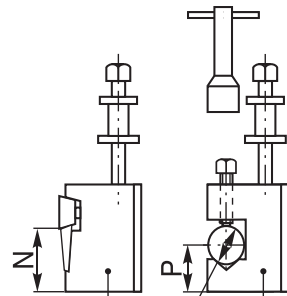
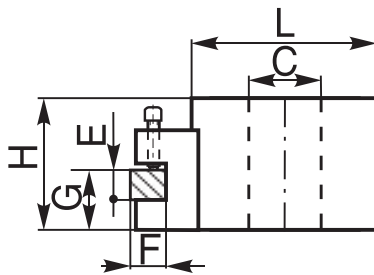
CLAMP PAD



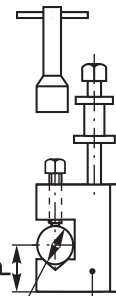
STOP



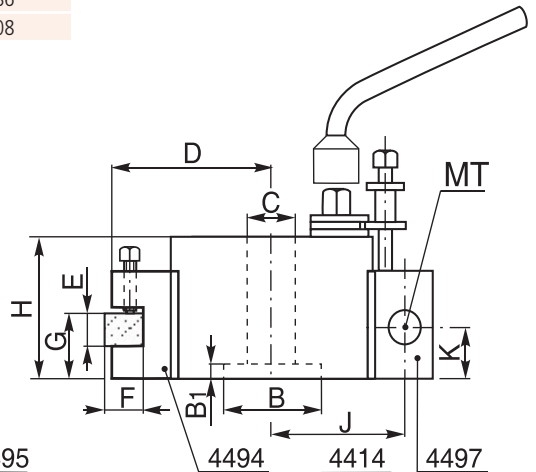
TOOLPOST SCREW



4496



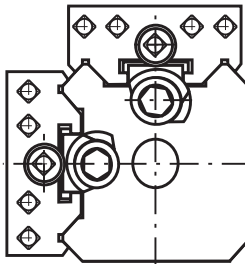
4495



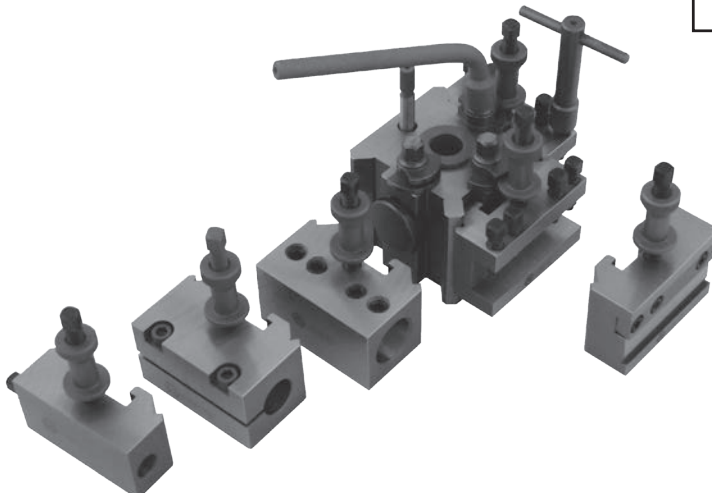
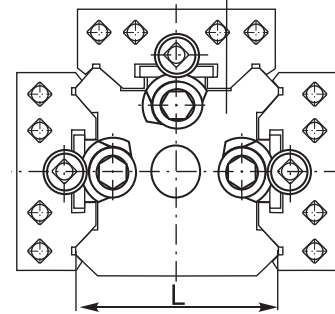
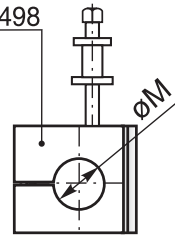
4494

4414

4497

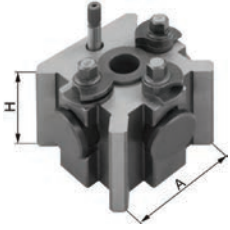


4498



For full dimensions of toolposts refer to main catalogue.

4414 – QUICK CHANGE TOOLPOST



Quick change tool posts for lathes interchangeable with Dickson.

Code	Type	Size mm	List Price £
80000651	T00M	48 x 37	155.67
80000652	T00B	48 x 42	167.78
80000653	T0	62 x 51	186.90
80000654	T1	62 x 63	230.01
80000655	T1X	62 x 73	236.00
80000656	T2	82 x 71	298.22
80000657	T2T	82 x 76	304.21
80000658	T3	100 x 92	379.67
80000659	T3HX	100 x 108	416.90

4494 – STANDARD TOOLHOLDERS



Code	Size	To fit toolpost	List Price £
80000660	48	T00M, T00B	39.72
80000663	62N	T0	57.47
80000662	62	T1, T1X	68.21
80000665	82N	T2	80.33
80000664	82	T2T	80.33
80000666	100	T3, T3HX	104.20

4495 – VEE TYPE TOOLHOLDERS



Code	Size	To fit toolpost	List Price £
80000667	48	T00M, T00B	40.96
80000670	62N	T0	61.09
80000669	62	T1, T1X	70.58
80000672	82N	T2	81.45
80000671	82	T2T	82.71
80000673	100	T3, T3HX	117.31

4496 – PART OFF TOOLHOLDERS



Code	Size	To fit toolpost	List Price £
80000674	48	T00M, T00B	67.09
80000676	62	T0, T1, T1X	86.21
80000677	82	T2, T2T	107.82
80000678	100	T3, T3HX	144.92

4497 – MORSE TAPER HOLDERS



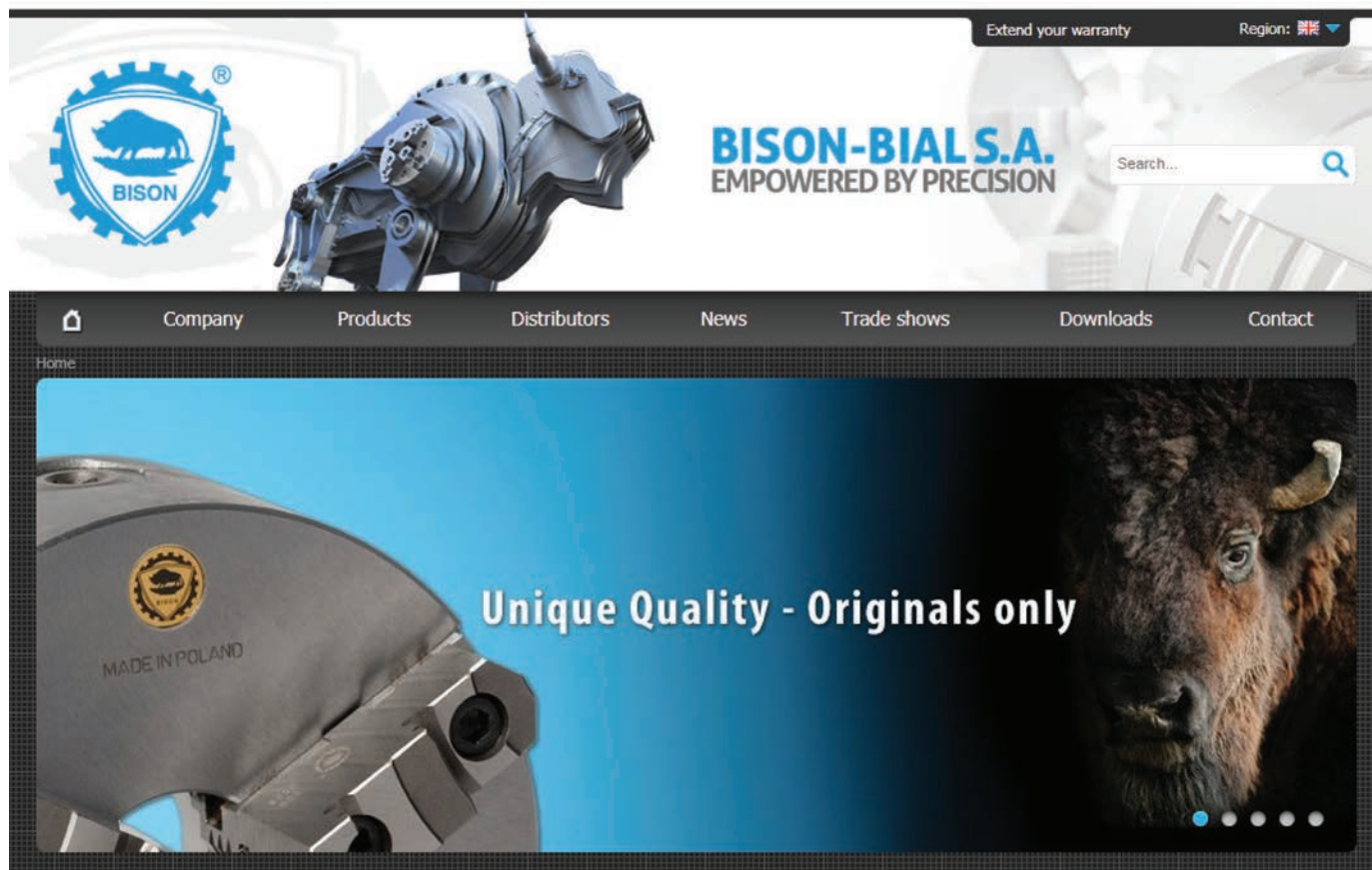
Code	Size	To fit toolpost	MT	List Price £
80000680	62/1N	T0	1	80.33
80000679	62/1	T1, T1X	1	92.21
80000681	62/2	T1, T1X	2	82.71
80000682	82/2	T2, T2T	2	105.32
80000683	100/3	T3, T3HX	3	135.30

4499 – BORING BAR TOOLHOLDERS



Code	Size	To fit toolpost	Bore mm	List Price £
80000688	62	T0, T1, T1X	25	89.82
80000689	82	T2, T2T	32	100.57
80000690	100	T3, T3HX	40	144.92

To search for a Bison product or view the complete range please visit
www.bison-bial.com



Click "Product" to search for individual products or click "Downloads, Catalogue" to download the section of the product range you are interested in. If you have a Bison part number or type reference enter this in the "Search" box and click return to view the item.

All products shown are BISON originals and not copies.

All prices are GBP excluding VAT / Carriage may be extra / Our standard terms of sale apply.

Your local distributor