

# BKK19 OpenAMP Shared Memory for Large Data

Following slides contain some useful links and resources. Any questions, please email [marketing-team@linaro.org](mailto:marketing-team@linaro.org)



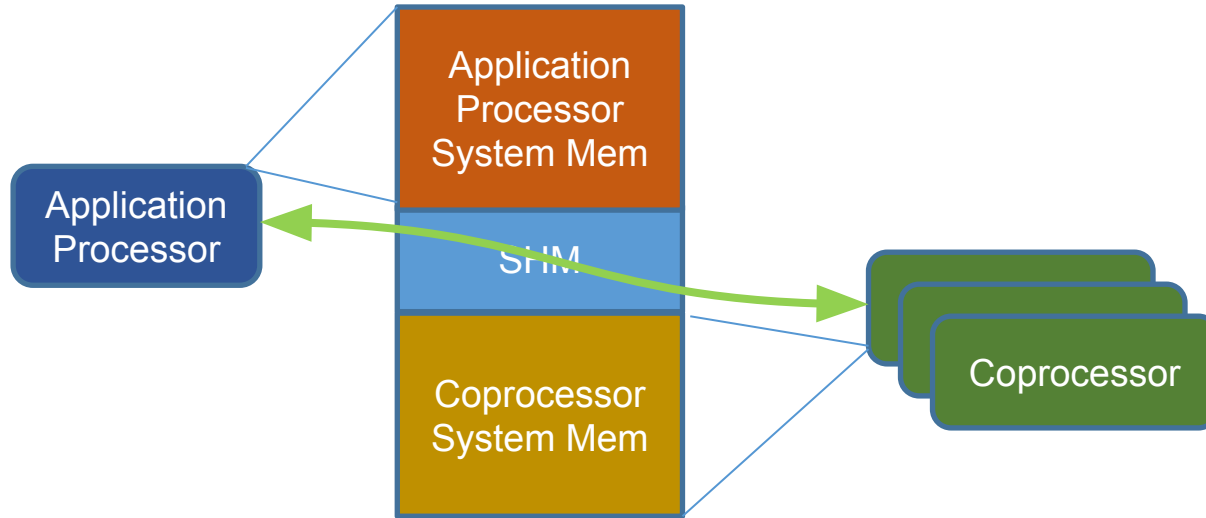
**Linaro  
connect**  
Bangkok 2019

# Large Data Shared Memory Issues in OpenAMP

- huge data memory allocation
  - Accessible by both application and coprocessor
  - Zero copy
- memory address mapping for coprocessor
- memory synchronization

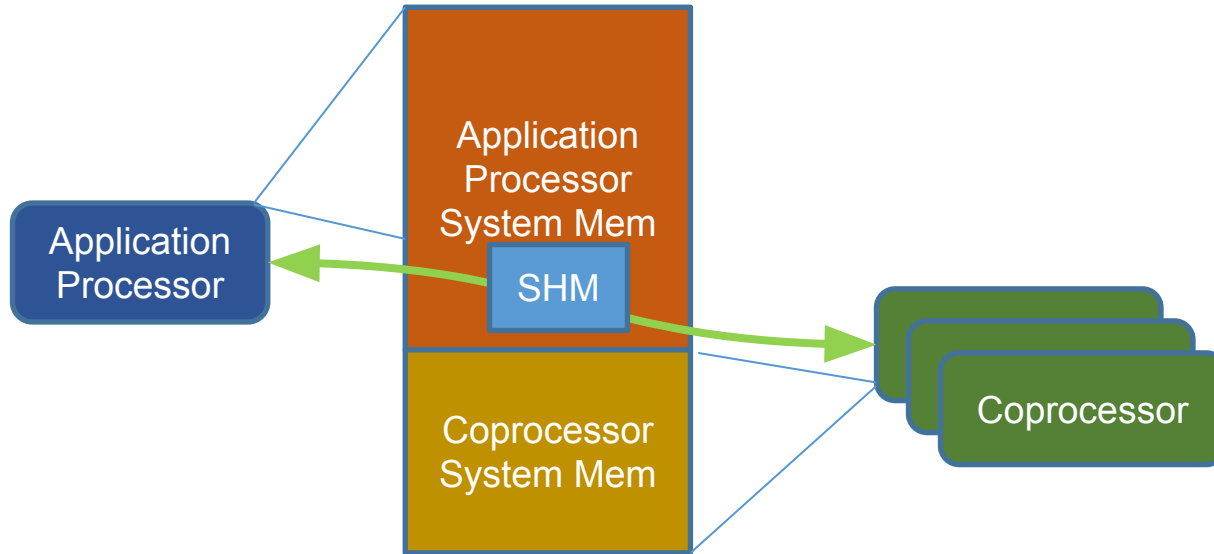
# Huge Data Shared Memory Use Cases

- Shared memory is statically-defined



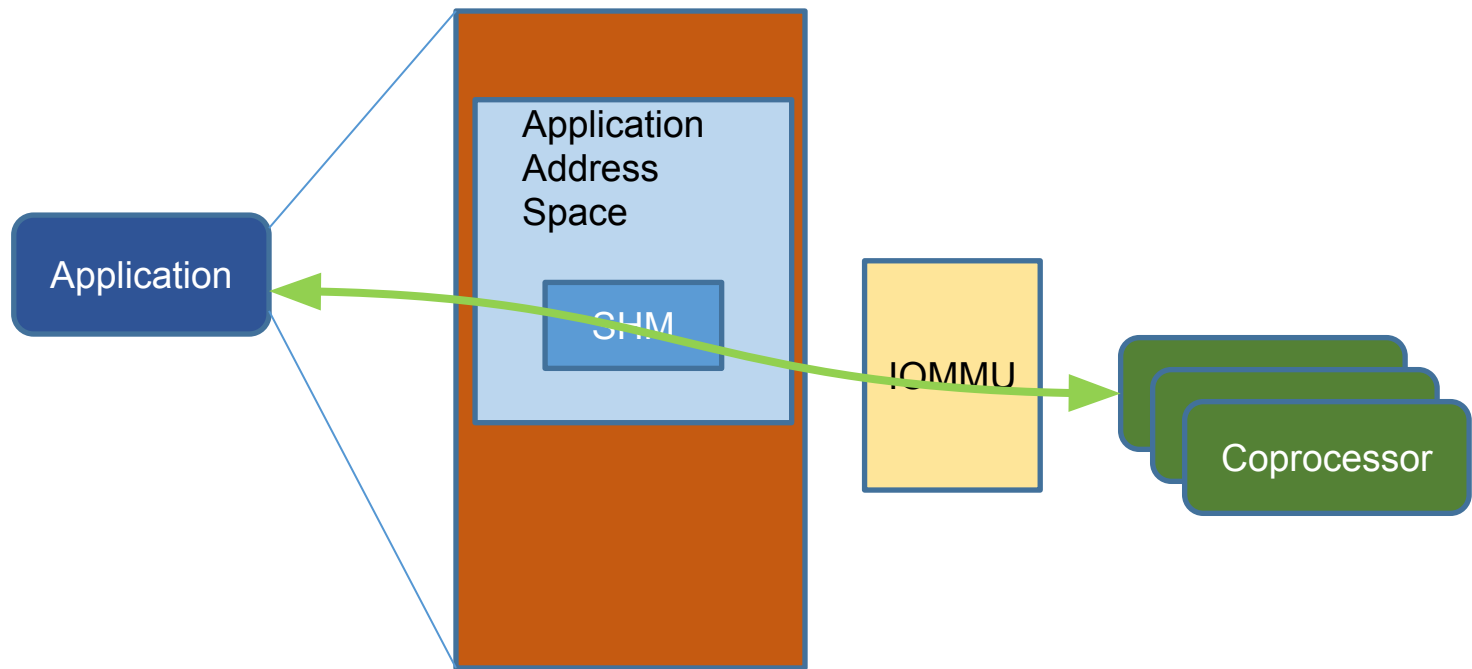
# Huge Data Shared Memory Use Cases

- Shared memory is from the application processor system memory

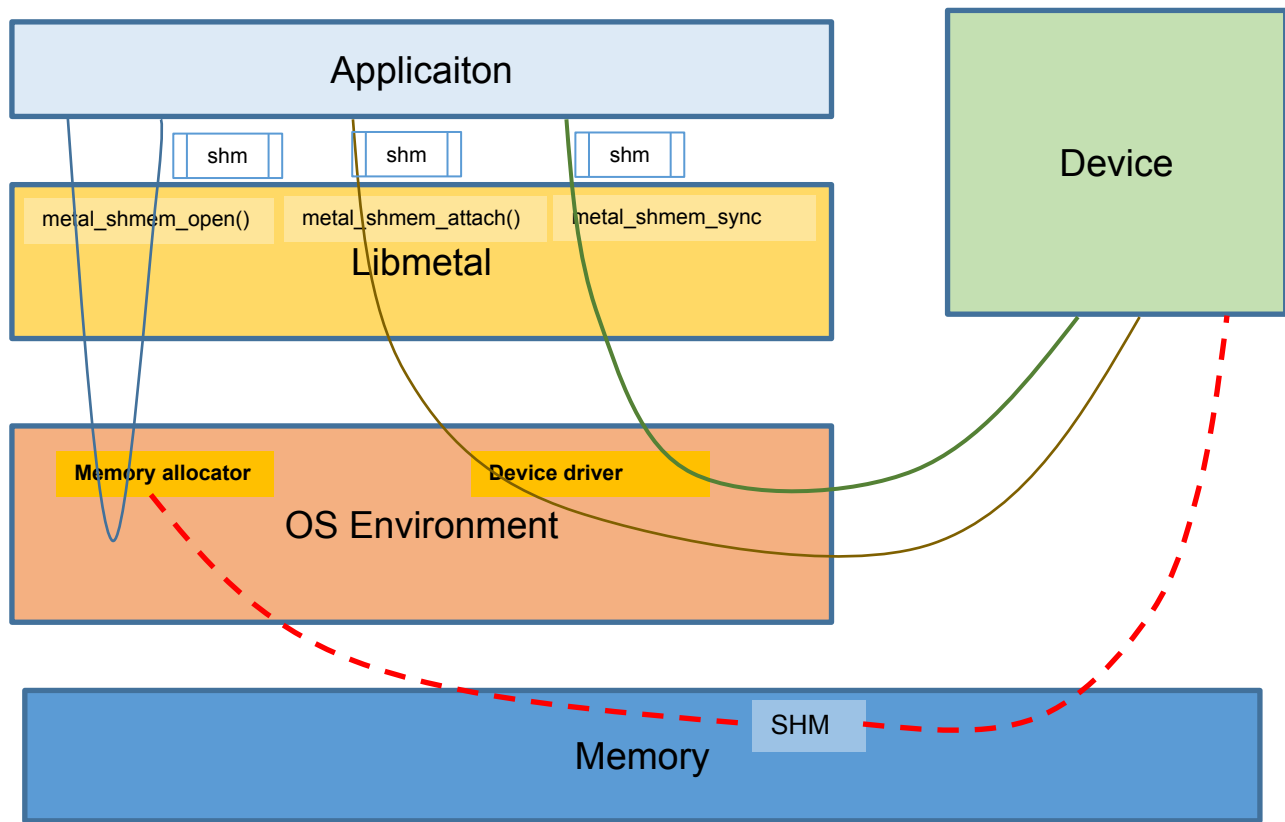


# Huge Data Shared Memory Use Cases

- Shared memory is from the application address space



# Libmetal Shared Memory Abstraction



# Libmetal Shared Memory Abstraction

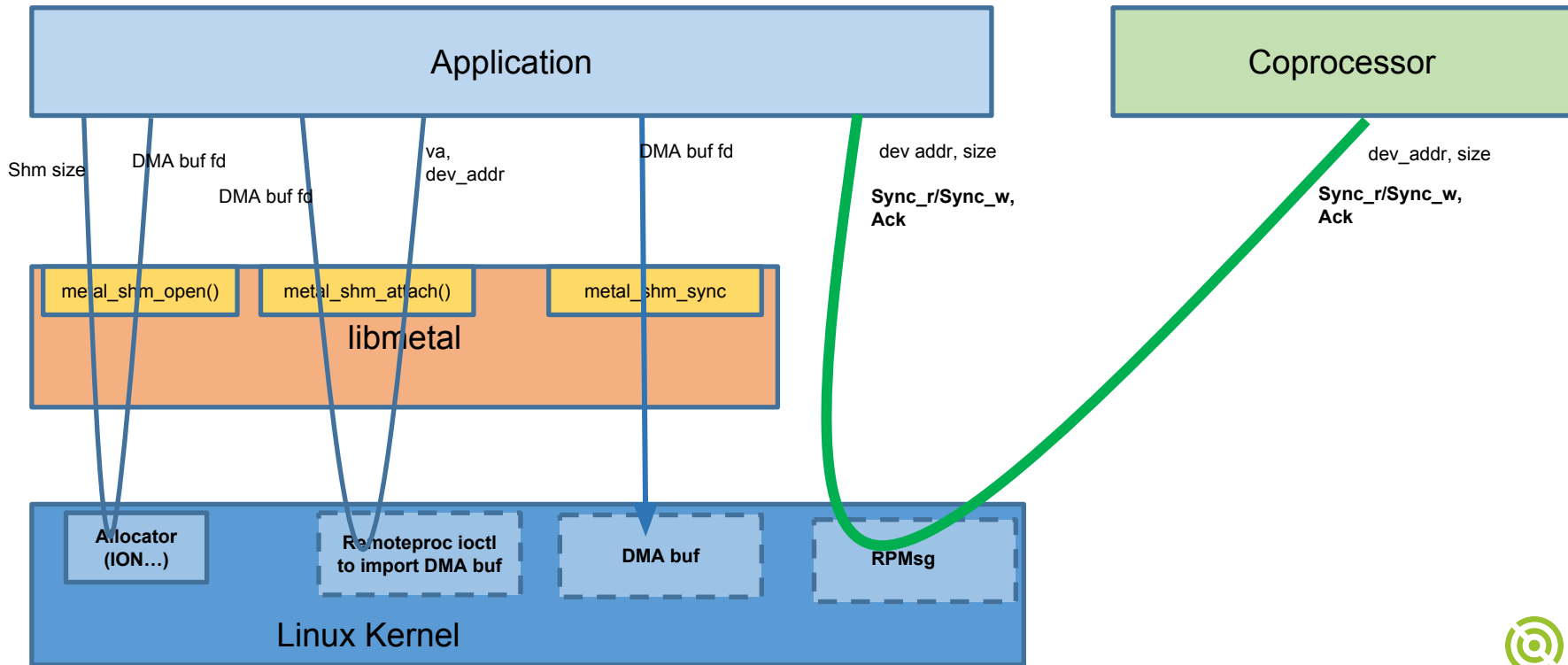
- `metal_shm_open()` – allocate shared memory if it is not allocated
- `metal_shm_attach()` – attach shared memory to device, mmap the memory for the device driver, allocate locks, etc.
- `metal_shm_sync_for_cpu()` – stop device shared memory access, and allow CPU access.
- `metal_shm_sync_for_device()` – stop CPU shared memory access, and allow device access.

# Libmetal Shared Memory Abstraction With RPMsg and Remtoeproc Option

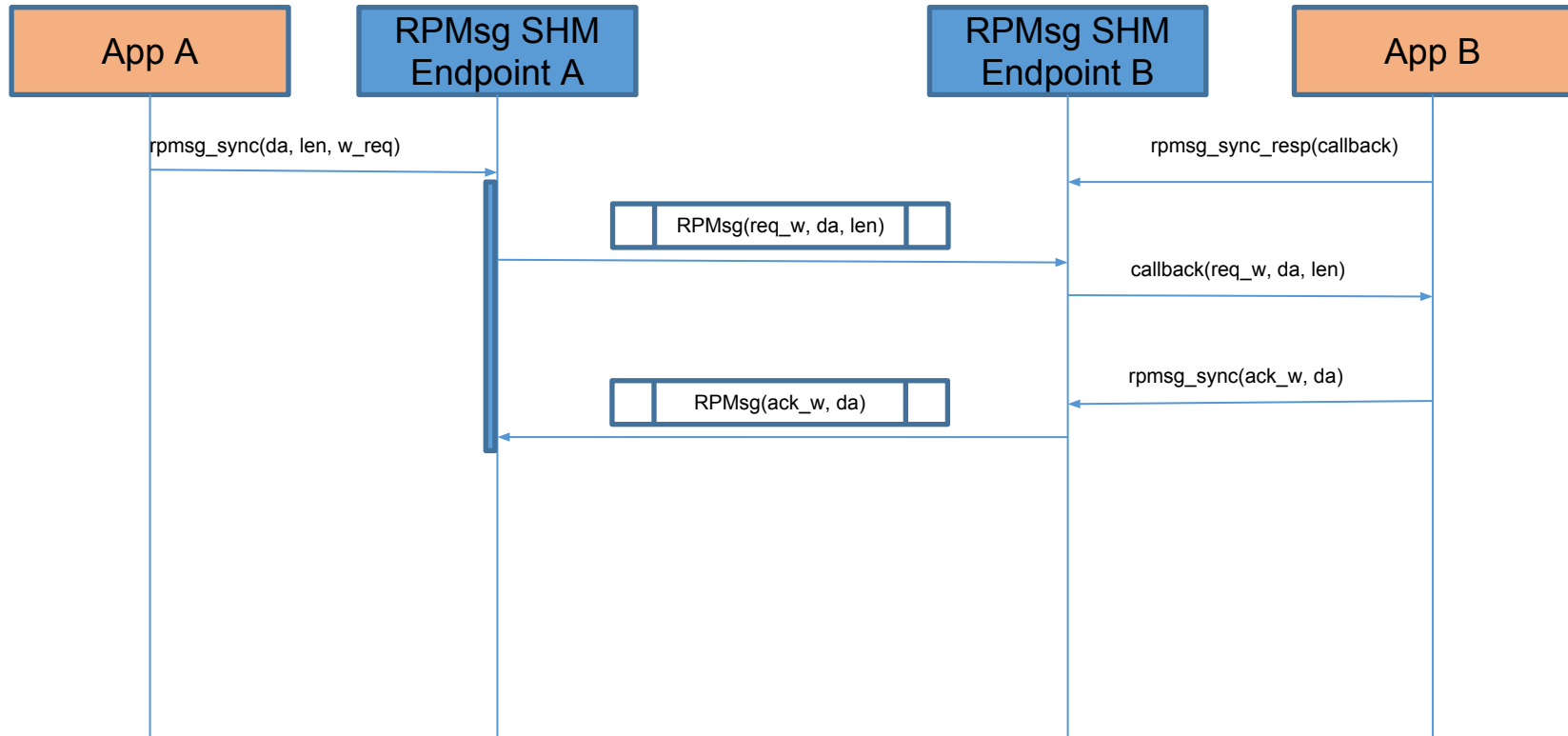
- RPMsg: Remote Processor Messaging
  - Pass shared memory information to coprocessor
  - Memory sync
- Remoteproc: Manage coprocessor resources
  - Coprocessor shared memory management
    - Only remoteproc knows about the device address of the shared memory
  - Low level IPC (notification)



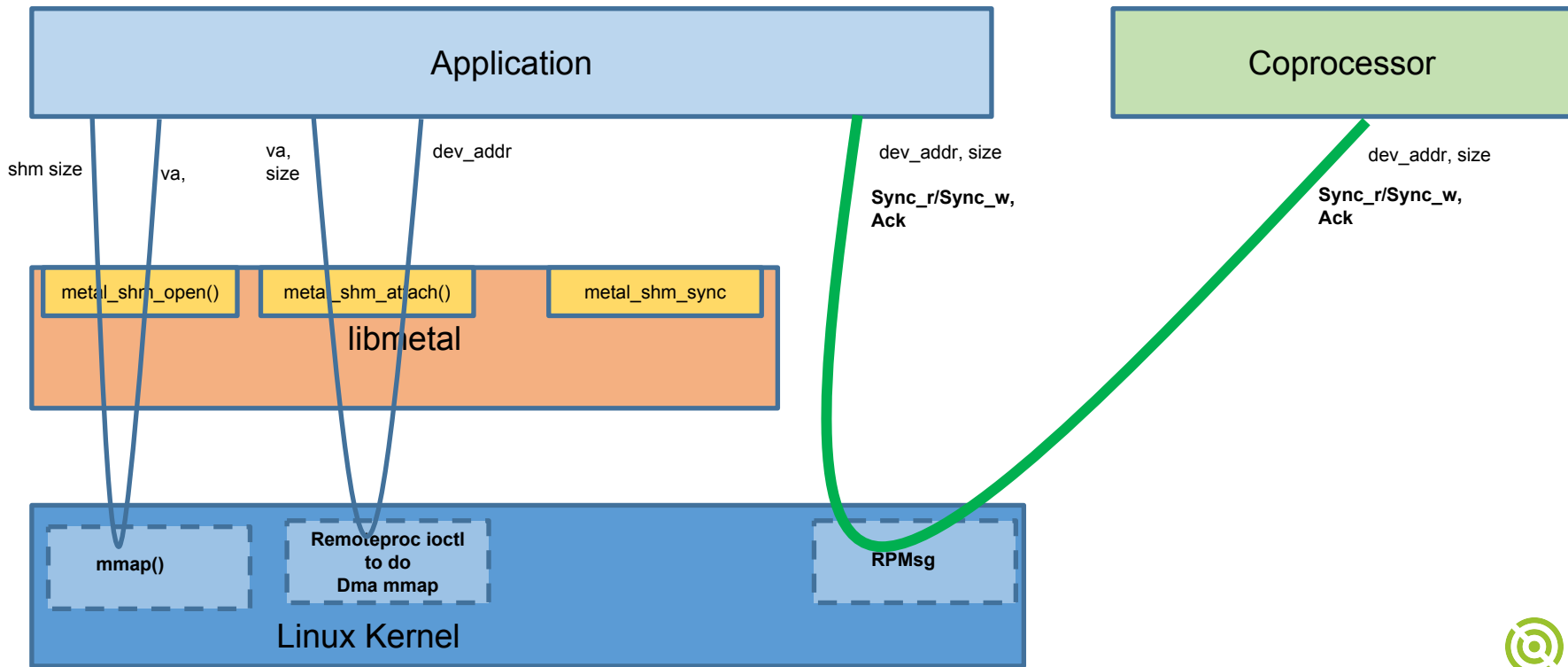
# Libmetal Shared Memory With Remoteproc in Linux – DMA buf



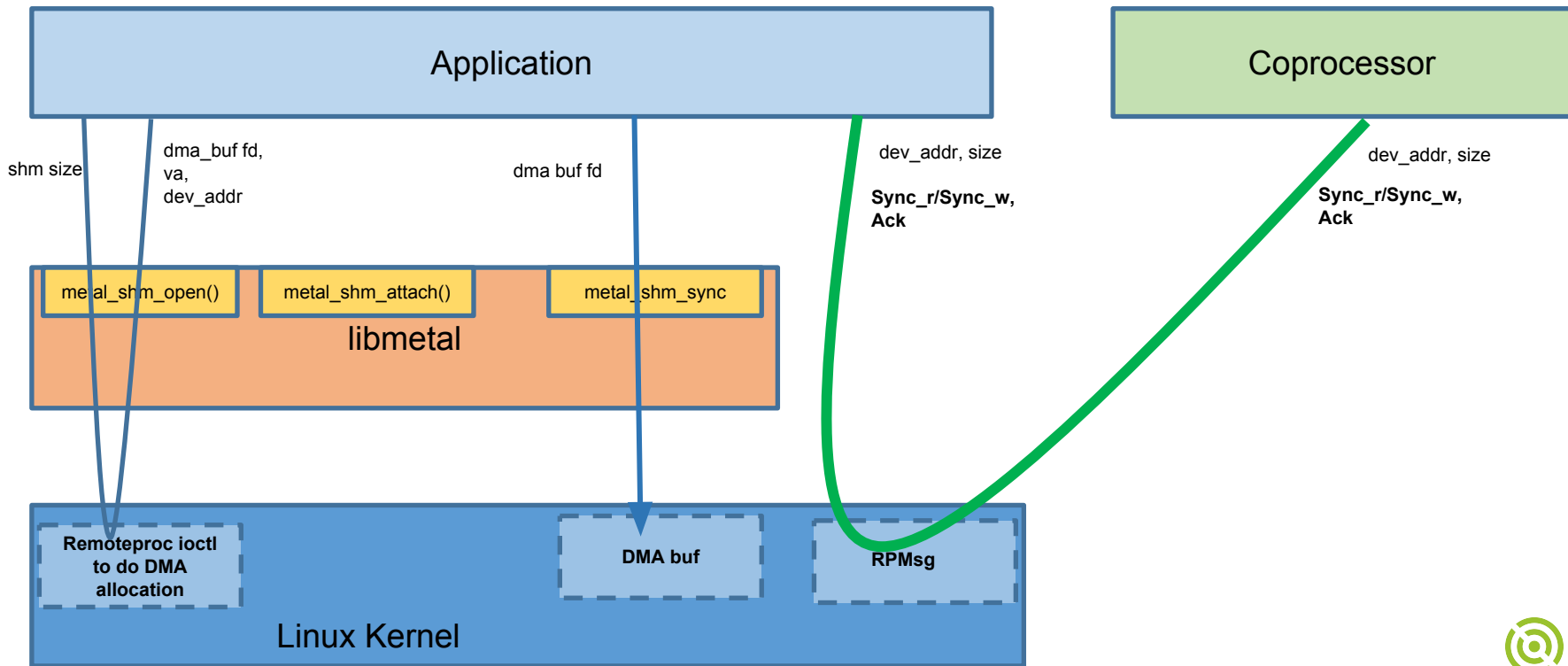
# RPMsg for Shared Memory Sync



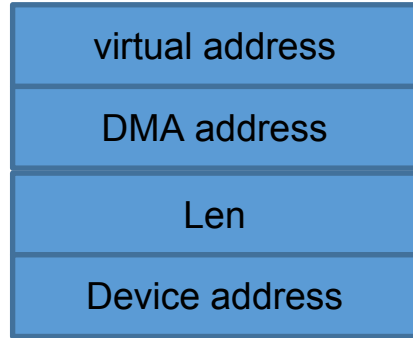
# Libmetal Shared Memory With Remoteproc in Linux – IOMMU



# Libmetal Shared Memory With Remoteproc in Linux – Remoteproc Static Shared Memory



# Remoteproc Carveouts



# Open Questions

- Is there a way for a RPMsg device to know about its attached remoteproc device?
  - Remoteproc can verify the shared memory and returns the remote address mapping.
- Userspace remoteproc and RPMsg?

# Thank you

Join Linaro to accelerate deployment of your  
Arm-based solutions through collaboration

[contactus@linaro.org](mailto:contactus@linaro.org)



9Boards is a range of specifications with boards and peripherals offering different performance levels and features in a standard footprint.



**Linaro  
connect**

Bangkok 2019