

BLACKBERN - WHITEWATER - KIRLENE

**ANNUAL
BULL SALE**

28 Yearling & Long Yearling Charolais Bulls

Setting the Standard!

March 13
2021

**1:30 pm • Renfrew Pontiac Livestock
Cobden, Ontario**

Blackbern Farm • WhiteWater Livestock • Kirlene Cattle

-Sale Information-

March 13 2021

AUCTIONEER

Stewart James 613-445-3269
Stewart James Jr. 613-222-2815 (bilingual)

SALE DAY PHONES:

Keith Black 613-570-8464
Kurtis Black 613-585-3873
Kirby Hakkesteegt 613-848-6917
Matt Dick 613-633-1598
Ben Dick 613-602-7253
Nathan Latchford 613-281-1477

**1:30 pm • Renfrew Pontiac Livestock
Cobden, Ontario**

View Bull Videos Online@
www.charolaisbanner.com
Late February!

SALE TERMS

- Bulls sell under Standard Terms & Conditions of the Canadian Charolais Association.
- Please make all settlements immediately after the sale.

BULL HEALTH

- All bulls will sell with a semen check and vet examination to ensure that you are purchasing a quality herd bull.
- All bulls marked as homo-pollled have been verified by DNA testing.
- Additional performance data will be available on sale day.
- The Blackburn and WhiteWater herds are vaccinated using the Bovishield Gold Live vaccine protocol, and the bulls will also have received their blackleg booster shot.
- Kirlene vaccination program is Bovishield Gold vaccine, Tasvax 8 covering black leg/tetanus and Ivomec.

DELIVERY

- Please see the seller if you require delivery after the sale. Shipping arrangements will be at the convenience of the seller, but will be as soon as practical after the sale, at the buyer's risk.
- We will keep bulls until April 30 free of charge. As of May 1, a boarding fee of \$5.00 per day applies. We are not liable for the bulls after the sale and ask that you insure any bull returning to the farm.

ONLINE BIDDING

Those unable to attend the sale will be able to view and bid online with Live Auctions TV.

Blackburn Farms

Keith & Karen Black
613-646-2673 (H)
613 - 570- 8464
blackburn@hotmail.com

Kirlene Cattle

Kirby & Arlene Hakkesteegt
& Family
Kirby Cell: 613-848-6917
kirbyh@ks.net

WhiteWater Livestock

Kurtis & Chelsea Black
613-585-3873
whitewaterlivestock@gmail.com
www.whitewaterlivestock.com

CHAROLAIS JANAUARY 2021

BREED AVERAGE EPDS:

BW 0.8 WW 44.5 YW 85.7 M 21.3 TM 43.5

PERFORMANCE DATA DEFINITIONS

BW: Actual Recorded Birth Weight
AWW = 205 day Adjusted weaning weight
AYW = 365 day Adjusted yearling weight

LiveAuctions.TV
2.0

A division of Superior Livestock

Welcome Everyone to Our Annual Bull Sale!

It goes without saying that 2020 had more than its fair share of challenges, but the beef business has persevered once again! Through all the ups and downs in the cattle market the one constant was the steady demand for Charolais sired calves. Year after year it keeps increasing, and for good reasons.

This year's bull roster truly offers something for everyone's program, no matter what your requirements. There are bulls that have scale pounding performance and bulls that can be used in any heifer pen with great confidence, all while keeping maternal traits and soundness top of mind. There are also a number of bulls that are Homozygous polled which will ensure that all their calves come out polled.

All bulls are once again on the Zoetis Bovi-shield Gold vaccination program and are raised by fully vaccinated cow herds. The bulls will also have a blackleg booster prior to the sale. Most importantly, bulls will only sell once they have passed a breeding soundness evaluation. This ensures that they have the capacity to get your cows bred! With the ever-changing Covid-19 protocols for crowd sizes we encourage everyone to come to our respective farms and view the bulls in their natural surroundings in the days and weeks before the sale. This will give you the opportunity to have a better look at them and visit one on one with us to help find a bull(s) that will fit your needs. The bulls will also be available for viewing in Cobden starting on Thursday, March 11th. We ask that only those who will be buying bulls to come on sale day so we can ensure proper distancing and safety. We will once again be broadcasting on LiveAuctions.TV so you can bid with confidence from the comfort of your own home. We will also have several people available to take phone bids if this would be more comfortable. Please see the preceding page for those names and numbers.

Thank-you again to everyone who has supported us in our previous sales and for taking the time to look through this year's offering. We are truly humbled by your confidence in our breeding programs. Please feel free to give any of us a call if you have questions about the bulls or the sale.

Sincerely,

Keith & Karen
Kurtis & Chelsea
Kirby & Arlene



Kurtis and Chelsea Black
& Family



Keith and Karen Black & Family



Kirby and Arlene Hakkesteeft
& Family

SCHEDULE OF ACTIVITIES & COVID PROTOCOLS

March 11 - 2:00 - 5:00

Viewing of bulls at
Renfrew Pontiac Livestock

March 12 - 10:00 - 5:00

Viewing of bulls at
Renfrew Pontiac Livestock

March 13 - 9:00 - 1:00

Viewing of bulls at
Renfrew Pontiac Livestock

March 13 - 1:30 pm

Sale at Renfrew Pontiac Livestock

*Entrance to the sales barn will follow
Covid-19 restrictions on sale day.*

Call for updates.

Masks are mandatory!

No lunch provided.

Thank You To Our 2020 Bull Sale Buyers!

Roy Dick	Mack Charolais
Stuart Lackey	Bill Gibson
Jason Ryan	Greg McCann
Oza Pilon	Patrick Kavanagh
Ron Fisher	Kim Weedmark
William Brus	Wes Thom
Robert Graham	Garnet Lamingman
Everett Leeder	Garry Whitford
Art Matheson	Andre Hebert
Robert Shaw	Ron Bell
Stephen Edwards	John Sheppard
Jack Mulligan	Alain Lafontaine

BIRTH WEIGHT & CALVING EASE

University studies in Wyoming and data from Montana and Colorado lend credence to the following conclusions:

1. The birth weight itself influences calving ease by 65%.
2. The female has 60-70% influence on birth weight of her calf.
3. The bull has 30-40% influence on birth weight of his progeny.
4. Pelvic measurement and angle as well as the shape of the calf have 35-40% influence on calving ease.
5. Length of gestation greatly affects birth weight. A fetus can gain over one pound per day in the last days of gestation.
6. Weather and temperature the last 30 days affect the length of gestation.
7. Size and maturity of the cow influence calving ease.

Most commercial producers do not take birth weights. Guessing is as inaccurate as driving with a broken speedometer – what's thought to be 55 mph may in fact be 65 or 70 mph, and what's thought to be 70-80 lb may actually be 80-90 lb.

Remember, everything is relevant. Increased growth, frame and performance will increase BW. A longer bodied calf will weigh more. If a calf is expected to have genetics for growth, it will display this prior to birth as well as after. As a rule of thumb, it takes a calf weighing 85 lb at birth to finish at 1200-1250 lb. A cow should easily give birth to a calf weight 8% of her own body weight. Thus a 1200 lb cow should give birth to a 96 lb calf with ease.

Continued selection for light birth weights will ultimately reduce the mature sizes and performance of your cattle.



1 **BLACKBERN GUNNER 57G**
 KBF 57G August 29, 2019 PEMC791637 Polled
 SPARROWS DURANGO 585P
WINN MANS LANZA 610S
 WINN MAN MERIT 036K
 HTA SPIRIT PLD 826H
BLACKBERN TRACEY 13T
 B&M MISS GOLDSTARBEEF27J
EPD's: BW: 2.9 WW: 41.0 YW: 92.0 M: 22.0 TM: 43.0

Performance	
BW	92
AWW	688
AYW	1172
POLLED	



2 **BLACKBERN GABE 61G**
 KBF 61G September 25, 2019 PMC792317 Polled
 PLEASANT DAWN MVP 316Y
TURNBULL'S EQUIPPED 216E
 CTP MISS KINDRED 216Y
 LT SUNDANCE 2251 PLD
BLACKBERN DIANNA 40D
 BLACKBERN BLISS 27B
EPD's: BW: -1.9 WW: 55.0 YW: 111.0 M: 25.0 TM: 52.0

Performance	
BW	95
AWW	845
AYW	1329
POLLED	



3 **BLACKBERN HOGAN 5H**
 KBF 5H January 1, 2020 PMC790176 Polled
 PLEASANT DAWN MVP 316Y
TURNBULL'S EQUIPPED 216E
 CTP MISS KINDRED 216Y
 RPJ PISTOL 129Y
BLACKBERN FANTASY 35F
 BLACKBERN CARRIE 23C
EPD's: BW: -4.2 WW: 47.0 YW: 94.0 M: 29.0 TM: 53.0

Performance	
BW	73
AWW	680
AYW	1274
POLLED	



4 **BLACKBERN HOLDEN 6H**
 KBF 6H January 1, 2020 PMC790177 Homo Polled
 PLEASANT DAWN MVP 316Y
TURNBULL'S EQUIPPED 216E
 CTP MISS KINDRED 216Y
 ROSSO DOUBLE DOWN 8Z
BLACKBERN FARRAH 15F
 BLACKBERNUNBELEIVABLE24U
EPD's: BW: -3.7 WW: 50.0 YW: 101.0 M: 28.0 TM: 53.0

Performance	
BW	77
AWW	692
AYW	1302
HOMO POLLED	



5

BLACKBERN HAMISH 7H

TMB 7H January 1, 2020 PMC790178 Homo Polled

PLEASANT DAWN MVP 316Y

TURNBULL'S EQUIPPED 216E

CTP MISS KINDRED 216Y

SVY MONUMENT PLD 159Y

MCTAVISH PURE CREAM 24E

MCTAVISH PURECREAM 12W

Performance

BW 89

AWW 727

AYW 1223

HOMO POLLED

EPD's: BW: -2.7 WW: 51.0 YW: 94.0 M: 27.0 TM: 53.0



6

BLACKBERN HARPER 8H

KBF 8H January 01, 2020 PMC790179 Homo Polled

SCR TRIUMPH 2135

SCX TRIUMPH 50B

SCX MISS HILO 128W

ROSSO DOUBLE DOWN 8Z

BLACKBERN FELICITY 23F

BLACKBERN ZINNIA 5Z

Performance

BW 80

AWW 673

AYW 1359

HOMO POLLED

EPD's: BW: -0.6 WW: 59.0 YW: 120.0 M: 19.0 TM: 48.0



7 **BLACKBERN HUXLEY 10H**

KBF 10H January 01, 2020 PMC790181 Homo Polled

SCR TRIUMPH 2135
SCX TRIUMPH 50B
 SCX MISS HILO 128W
 SPARROWS FARGO 811U
BLACKBERN ANDREA 5A
 BLACKBERN SNICKER 9S

Performance	
BW	95
AWW	688
AYW	1244
HOMO POLLED	

EPD's: BW: 0.0 WW: 58.0 YW: 110.0 M: 17.0 TM: 46.0



8 **BLACKBERN HAYDEN 13H**

KBF 13H January 01, 2020 PMC792137 Polled

LT LONGNECK 3031 PLD
LT DEL REY 6161 P
 LT MAXINE 7908 ET
 PLEASANT DAWN DIGEST 146C
BLACKBERN FAYE 26F
 BLACKBERN DAPHNE 3D

Performance	
BW	89
AWW	741
AYW	1251
POLLED	

EPD's: BW: -1.5 WW: 55.0 YW: 95.0 M: 24.0 TM: 51.0



9 **BLACKBERN HARLEY 14H**

KBF 14H January 02, 2020 PMC792138 Homo Polled

PLEASANT DAWN MVP 316Y
TURNBULL'S EQUIPPED 216E
 CTP MISS KINDRED 216Y
 PLEASANT DAWN MARSHALL 25U
BLACKBERN DAWN 41D
 BLACKBERN ABBY 1A

Performance
 BW 78
 AWW 679
 AYW 1167
HOMO POLLED

EPD's: BW: -4.7 WW: 45.0 YW: 86.0 M: 25.0 TM: 48.0



10 **BLACKBERN HUNTER 15H**

KBF 15H January 03, 2020 PMC792139 Polled

SCR TRIUMPH 2135
SCX TRIUMPH 50B
 SCX MISS HILO 128W
 WINN MANS BIG RIG 639Y
BLACKBERN EMILY 14E
 BLACKBERN UTOPIA 6U

Performance
 BW 104
 AWW 742
 AYW 1260
POLLED

EPD's: BW: 2.3 WW: 59.0 YW: 109.0 M: 17.0 TM: 46.0



11	BLACKBERN HANK 16H		Performance	
	KBF 16H	January 03, 2020	PMC792140	Polled
	LT SUNDANCE 2251 PLD		BW	80
	LT SIGNATURE 6136 PLD		AWW	644
	LT BRENDA 2225 PLD		AYW	1162
	RPJ PISTOL 129Y		POOLED	
	BLACKBERN FAWN 34F			
	PLEASANT DAWN RITA 853U			
	EPD's: BW: -2.2 WW: 38.0 YW: 71.0 M: 25.0 TM: 44.0			



12	BLACKBERN HAWKEYE 18H		Performance	
	KBF 18H	January 04, 2020	PMC792142	Homo Polled
	PLEASANT DAWN MVP 316Y		BW	95
	TURNBULL'S EQUIPPED 216E		AWW	610
	CTP MISS KINDRED 216Y		AYW	1150
	CSS SIR GRIDMAKER 2W		HOMO POOLED	
	LAE ABBY 322A			
	LAE SKY-HIGH 694S			
	EPD's: BW: -2.4 WW: 47.0 YW: 94.0 M: 21.0 TM: 44.0			



13 **BLACKBERN HAYES 20H**

KBF 20H January 08, 2020 PMC792144 Polled

SCR TRIUMPH 2135

SCX TRIUMPH 50B

SCX MISS HILO 128W

RPJ PISTOL 129Y

BLACKBERN DEIRDRE 24D

BLACKBERNUNBELEIVABLE24U

Performance

BW 104

AWW 713

AYW 1387

POLLED

EPD's: BW: 2.1 WW: 58.0 YW: 110.0 M: 18.0 TM: 47.0



14 **BLACKBERN HUDSON 26H**

KBF 26H January 18, 2020 PMC792148 Homo Polled

SCR TRIUMPH 2135

SCX TRIUMPH 50B

SCX MISS HILO 128W

RPJ PISTOL 129Y

BLACKBERN CARA 19C

PLEASANT DAWN RITA 853U

Performance

BW 105

AWW 583

AYW 1159

HOMO POLLED

EPD's: BW: 1.4 WW: 47.0 YW: 92.0 M: 17.0 TM: 41.0



15 **BLACKBERN HOUSTON 28H**

KBF 28H January 27, 2020 PMC792149 Homo Polled

PLEASANT DAWN MVP 316Y
TURNBULL'S EQUIPPED 216E
 CTP MISS KINDRED 216Y
 GERRARD MONTEZUMA 6T
SUNRISE SUSIE Q 44Z
 CHARBURG SHERRI 8U

Performance
 BW 102
 AWW 682
 AYW 1258
HOMO POLLED

EPD's: BW: -0.9 WW: 52.0 YW: 101.0 M: 26.0 TM: 51.0



16 **BLACKBERN HANNIBAL 29H**

KBF 29H January 30, 2020 PMC792150 Polled

PLEASANT DAWN MVP 316Y
TURNBULL'S EQUIPPED 216E
 CTP MISS KINDRED 216Y
 PLEASANT DAWN PRESTO141L
BLACKBERN UTURN 1U
 BLACKBERN NADINE 3N

Performance
 BW 95
 AWW 661
 AYW 1120
POLLED

EPD's: BW: -2.9 WW: 43.0 YW: 89.0 M: 29.0 TM: 50.0



17

BLACKBERN HARRISON 30H

KBF 30H January 31, 2020 PMC792151 Homo Polled

PLEASANT DAWN MVP 316Y

TURNBULL'S EQUIPPED 216E

CTP MISS KINDRED 216Y

BRIDOR TRAVIS 15T

BLACKBERN BETHANY 48B

BLACKBERN YOLANDA 30Y

EPD's: BW: -3.0 WW: 44.0 YW: 95.0 M: 25.0 TM: 47.0

Performance

BW 89

AWW 620

AYW 1249

HOMO POLLED



18

BLACKBERN HOLLIS 33H

KBF 33H February 13, 2020 PMC792153 Homo Polled

PLEASANT DAWN MVP 316Y

TURNBULL'S EQUIPPED 216E

CTP MISS KINDRED 216Y

PLEASANT DAWN MARSHALL 25U

BLACKBERN DIXIE 43D

WHITWATER MISS 20Z

EPD's: BW: -2.4 WW: 45.0 YW: 89.0 M: 26.0 TM: 48.0

Performance

BW 87

AWW 620

AYW 1150

HOMO POLLED



19 **WHITWATER HULK 3H**
 KAB 3H January 01, 2020 PMC794894 Homo Polled
 SILVERSTREAM GEDDES G102
SOS CHUCK WAGON 54C
 SDC BACHOLERETTE 44W
 PLEASANT DAWN MARSHALL 25U
WHITWATER ADORABLE 9A
 WHITWATER UNLIMITED 9U
Performance
 BW 93
 AWW 790
 AYW 1256
HOMO POLLED
 EPD's: BW: 0.6 WW: 42.0 YW: 78.0 M: 18.0 TM: 39.0



20 **WHITWATER HURRICANE 12H**
 KAB 12H January 18, 2020 PMC795755 Polled
 SILVERSTREAM GEDDES G102
SOS CHUCK WAGON 54C
 SDC BACHOLERETTE 44W
 WINN MANS BIG RIG 639Y
WHITWATER EMERALD 13E
 MXS FAITH 863U
Performance
 BW 85
 AWW 767
 AYW 1287
POLLED
 EPD's: BW: 0.8 WW: 42.0 YW: 79.0 M: 18.0 TM: 39.0



21

WHITWATER HERCULES 14H

KAB 14H January 23, 2020 PMC795756 Twin Scurred

SILVERSTREAM GEDDES G102

SOS CHUCK WAGON 54C

SDC BACHOLERETTE 44W

KEYS ALL STATE 149X

WHITWATER BLISS 3B

WHITWATER ZEST 3Z

Performance

BW 80

WW 925

DEC. 29 WT 1170

SCURRED

EPD's: BW: 1.5 WW: 48.0 YW: 92.0 M: 16.0 TM: 40.0



22

WHITWATER HILTON 15H

KAB 15H January 23, 2020 MC795757 Twin Dehorned

SILVERSTREAM GEDDES G102

SOS CHUCK WAGON 54C

SDC BACHOLERETTE 44W

KEYS ALL STATE 149X

WHITWATER BLISS 3B

WHITWATER ZEST 3Z

Performance

BW 82

WW 860

DEC. 29 WT 1150

DEHORNE

EPD's: BW: 1.5 WW: 48.0 YW: 92.0 M: 16.0 TM: 40.0



23

KIRLENE HAWK 6H

HPF 6H January 26, 2020 PMC787987 Polled/Scurred

WDZ FIREMAKER 6062 P ET

CEDARDALE YELLOWSTONE 25Y

CEDARDALE STYLE 8S

WCR PRIME CUT 764 PLD

KIRLENE PRIME CUT DELILAH 6W

KIRLENE DELILAH DUKE 6T

Performance

BW 101

AWW 570

AYW 1166

SCURRED

EPD's: BW: 1.2 WW: 45.0 YW: 96.0 M: 25.0 TM: 48.0



24

KIRLENE HASHTAG 13H

HPF 13H January 2, 2020 PMC788418 Polled/Scurred

WCR COUNTY LINE 3132 P

WCR COMMISSIONER 593 P

WCR MS BRAVO 399 P

MVY XPLOER 21X

KIRLENE QUINCY XP 13F

KIRLENE QUINCY GO GO 13D

Performance

BW 75

AWW 826

AYW 1290

SCURRED

EPD's: BW: -4.6 WW: 60.0 YW: 98.0 M: 21.0 TM: 51.0



25

KIRLENE HARVEST 88H

HPF 88H January 1, 2020 PMC787927 Homo Polled

WCR COUNTY LINE 3132 P

WCR COMMISSIONER 593 P

WCR MS BRAVO 399 P

LAE AVALANCHE 327A

KIRLENE CANDY CRUSH 88F

JWX CANDY CRUSH 88C

EPD's: BW: -0.7 WW: 55.0 YW: 107.0 M: 19.0 TM: 47.0

Performance

BW 80

AWW 640

AYW 1265

HOMO POLLED



26

KIRLENE DUKE 131H

HPF 131H January 4, 2020 PEMC787933 Polled

WCR SIR DUKE 761

VCR SIR DUKE 914 PLD

WCR MISS MAC IV 534

SPARROWS FARGO 811U

KIRLENE QUINCY GO GO 13D

KIRLENE QUINCY ALORA 13Z

EPD's: BW: -1.7 WW: 55.0 YW: 96.0 M: 28.0 TM: 55.0

Performance

BW 98

AWW 771

AYW 1356

POLLED



27 **KIRLENE HERC 188H**

HPF 188H January 6, 2020 PMC787934 Homo Polled
 JLP PATRY HADDOCK 71N
KIRLENE DOCKAGE 58X
 LAND O'LAKES JUICY 5S
 KAYR VELOCITY 812Z
JWX CANDY CRUSH 88C
 KCM LUCKY 607S
EPD's: BW: 1.6 WW: 33.0 YW: 61.0 M: 31.0 TM: 48.0

Performance	
BW	96
AWW	567
AYW	1080
HOMO POLLED	



28 **KIRLENE HUNTER 205H**

HPF 205H February 21, 2020 PMC788001 Polled
 JWY MAVERICK 630Z
KIRLENE JOE 88E
 JWY CANDY CRUSH 88C
 LAE AVALANCHE 327A
KIRLENE AVA BARBARA 205E
 KCM BARBARA 205Z
EPD's: BW: 0.8 WW: 47.0 YW: 80.0 M: 21.0 TM: 44.0

Performance	
BW	90
AWW	672
AYW	1111
POLLED	



SOS Chuckwagon 54C
Sire of Lots 19, 20, 21 and 22



SCX Triumph 50B
Sire of Lots 6, 7, 10, 13 and 14



Pleasant Dawn MVP 316Y
Grand Sire of Lots 2, 3, 4, 5, 9, 12, 15,
16, 17 and 18



LT Signature 6136 PLD
Sire of Lot 11



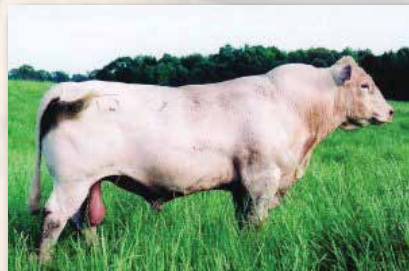
LT Del Rey 6161 P
Sire of Lot 8



WCR Commissioner 593P
Sire of Lot 24 and 25



Cedardale Yellowstone 25Y
Sire of Lot 23



VCR Sir Duke 914 PLD
Sire of Lot 26

Farm Drainage Specialists



- GPS & Laser Machine Control • GPS Drawings for Drainage Systems
- Erosion Control/Shoreline Protection • Land Clearing • Site Preparation
- Excavating/Bulldozing/Grading



613-388-2345

www.richmondditching.on.ca • herman@richmondditching.com

BMO



Loralie Scale
Relationship Manager

BMO Bank of Montreal
Small Business Banking
236 Raglan Street South
Renfrew, Ontario K7V 1R1

Tel.: 613-857-7627
Fax: 613-432-7782
loralie.scale@bmo.com



RENFREW
— ANIMAL HOSPITAL —
PROFESSIONAL CORPORATION



FETAL PROTECTION:

THE CORNERSTONE OF A PRODUCTIVE HERD

IT ALL STARTS
WITH

FP



Count on the Zoetis line of fetal protection vaccines—with “FP”
in the name—for leading protection you can build herd health on.

Bovi-Shield®
GOLD FP⁵

Zoetis®, Bovi-Shield®, GOLD FP⁵ and CattleMaster® GOLD FP⁵ are registered trademarks of Zoetis or its licensors, used under license by Zoetis Canada Inc. © 2019 Zoetis Canada. All rights reserved.

zoetis



JAMIESON-MACKAY forming & construction Ltd.

1986 Beachburg Rd.
Beachburg, ON K0J 1C0

RESIDENTIAL · COMMERCIAL · AGRICULTURAL
UNDERPINNING · FOUNDATION AND SLAB REPAIRS
REBAR AND WIRE MESH SALES · BOOM TRUCK RENTALS

Jason Jamieson
613-401-6673
kjjamieson@nrtco.net

Scott Mackay
613-585-7691

Fertilizer Season is Almost Here!

Spreader rentals are complimentary*
call for details
*minimum orders and
conditions apply

FEED SOLUTIONS FOR EVERY BUDGET

With our in-house custom blends and



Serving our farming
community for
40 years

4139 Highway 60 in Douglas

613-649-2440

Setting the Standard!

HOARDS STATION

FARM SUPPLY

Kirk & Kevin Cooney
705 653-0513 / 1-800-815-5577
2793 County Road 8, Campbellford

Feed, seed and farm supplies – we've got what you need!



BAY OF QUINTE VETERINARY SERVICES



6966B HWY 62N BELLEVILLE, ON K8N 4Z5 T: 613-966-5229
E: quintevet@hotmail.com F: 613-966-9931



Blueprint[®]

NUTRITION PROGRAM

Maximize on-farm performance and profitability.

Blueprint Beef Minerals are a unique and effective approach to beef cattle nutrition, designed with cutting-edge nutrition technologies for today's advanced beef genetics.

The Blueprint Seasonal Beef Cow Mineral Program is designed with three stages of gestation in mind, allowing nutrition to be targeted towards gestational needs. It includes a balanced supply of minerals and vitamins, provides a rising plane of nutrition and has excellent absorption and retention for better health and reproductive performance.

Contact us today to help your beef cattle reach their full genetic potential.

masterfeeds.com    



Masterfeeds[®]

an **Alltech[®]** company

FORMULATED WITH
Alltech[®]
SOLUTIONS