



BLUECIELO MERIDIAN 2015 – WHAT'S NEW

Overview of the new features for all BlueCielo Meridian Enterprise 2015 product levels (Base, Standard & Plus)

White paper



Contact
Edwin van Dijk | Director Global Marketing
Arjen Bos | Product Manager

BlueCielo ECM Solutions
www.bluecieloecm.com
August 2015
Version 1.0

TABLE OF CONTENTS

1	INTRODUCTION	3
2	GROWING ORGANIZATIONAL NEEDS.....	4
	2.1 Introduction	4
	2.2 Meridian Product levels	4
	2.3 Meridian Products – Power and Explorer Named Users.....	5
	2.4 Centralization & Web Accessibility	5
	2.5 Named User License Management.....	6
3	MERIDIAN 2015 – POWER	7
	3.1 (CAD) Application Integration.....	7
	3.2 Power to the Web	7
	3.3 Power – Base	9
	3.4 Power – Standard.....	10
	3.5 Power – Plus	11
	3.6 Revit support for BIM.....	13
4	MERIDIAN 2015 – EXPLORER	15
	4.1 Explorer – Base	15
	4.2 Explorer – Standard.....	17
	4.3 Explorer – Plus	18
	4.4 Explorer Mobile.....	18
5	MERIDIAN 2015 – PLATFORM.....	20
	5.1 Meridian Base Server	20
	5.2 Meridian Enterprise Server.....	23
	5.3 Documentation updates.....	24
6	APPENDIX - MODULE MAPPING.....	26
7	BLUECIELO ECM SOLUTIONS.....	27

1 INTRODUCTION

Our customers in the process and power industries act in a dynamic and globalizing market. Their main goal is to contribute to the profitability of the organization, but both internal and external factors change the circumstances constantly, requiring management to take appropriate action. The main challenge for our customers is to be in control, which can be very difficult, particularly when dedicated departmental applications are used for each function; engineering, maintenance or project management. BlueCielo Meridian Enterprise is the versatile Engineering Information Management solution with a broad range of features that allow optimization of all business processes related to the creation, collaboration and distribution of engineering data and integration with a range of departmental business applications.

Each organization has different requirements for managing engineering information, ranging from Drawing Management up to full Asset Lifecycle Information Management (see Chapter 2). Modern Engineering Information Management systems can be deployed to meet specific organizational needs, for which we have introduced three product levels in BlueCielo Meridian 2015; Base, Standard and Plus. Each level provides additional key capabilities to address the requirements of the organization, even allowing variation between sites within the same organization.

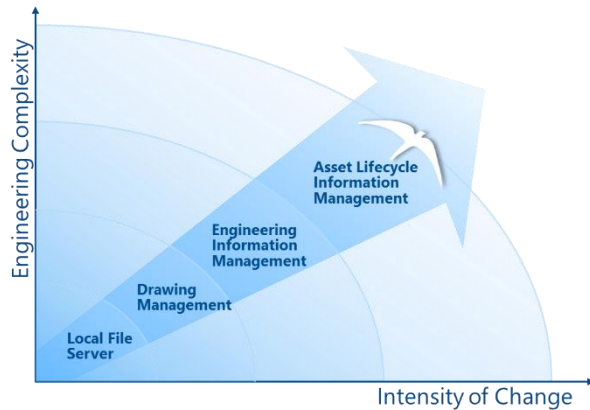
Next to variation in organizational needs, we also see many of our customers requiring central deployment of their business applications, utilizing full-featured web clients. This has become the main theme for the BlueCielo Meridian 2015 release, officially available as of August 1st 2015, reflected in the following topics:

- Growing Organizational Needs
- Centralized Deployment
- Web access
- CAD integration
- Revit for BIM
- Collaboration Packages

To ensure optimum use of all the new features we advise to attend our online or classroom training courses, see <http://www.bluecieloecm.com/bluecielo-academy-customers>. For actual implementation of the new software and tailor it to your organizational needs, please contact your BlueCielo representative.

2 GROWING ORGANIZATIONAL NEEDS

2.1 Introduction



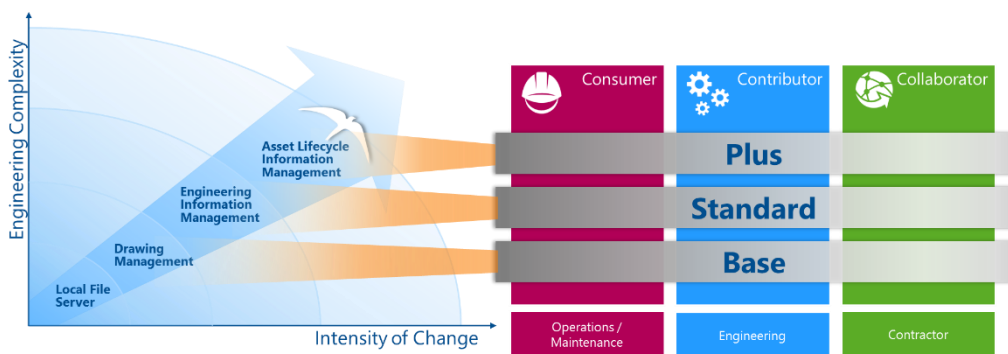
The higher the engineering complexity of the assets and the more impactful plant modifications, the higher the requirements for managing engineering information throughout the entire asset lifecycle. This can be distinguished by levels of growing organizational needs as shown in the adjacent figure.

Where Drawing Management Solutions (**DMS**) focus on managing the process of CAD design, Engineering Information Management (**EIM**) Solutions focus on supporting the lifecycle of engineering data and all relations between the various technical documents. Asset Lifecycle Information Management (**ALIM**) means managing both the assets and their related engineering information throughout the entire asset lifecycle, enabling higher data consistency and completeness to prove compliance.



2.2 Meridian Product levels

BlueCielo recognizes that each organization or site within, has their own requirement level to manage the engineering information. In BlueCielo Meridian 2015 we have aligned all key capabilities of our platform to meet these requirement levels and we introduce BlueCielo Meridian Base, Standard and Plus level.



2.2.1 Base

- Office, email, 2D and 3D CAD application integration
- Document workflow
- Revision management
- Meta-data; cascading lookup lists
- Viewing & compare
- Navigation views and to-do lists

2.2.2 Standard

On top of the Base level, the Standard level provides:

- Extended CAD integration through shared workspace
- Audit trail & audit reporting
- Support for having documents managed within concurrent projects (also known as concurrent engineering or management of change).
- Enhanced scalability

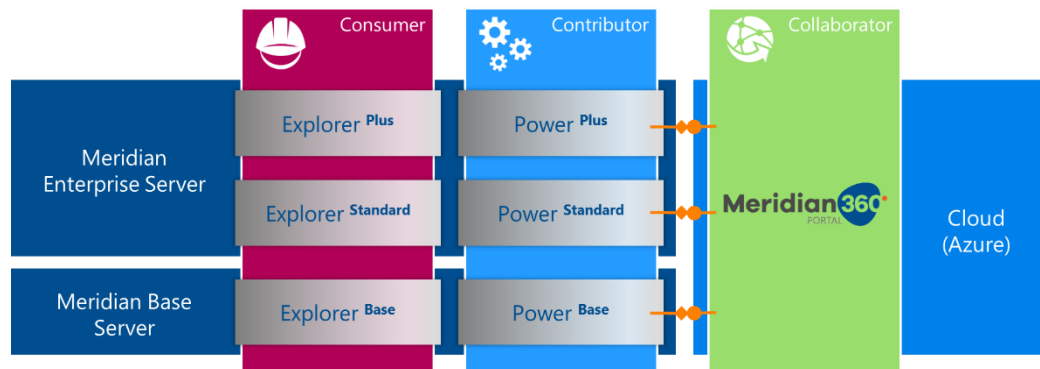
2.2.3 Plus

On top of the Standard level, the Plus level provides:

- Specific features for regulatory compliance, such as subscription management, authenticated login (optional by configuration), electronic signatures for document and project workflows.
- Managing assets (or more generic “objects” with a unique object identifier such as a tag number or functional location number) and their relationship with documents in the vault. This enables users to search by tag number and find related documents, either standalone or integrated with systems such as IBM Maximo, SAP PM, FAMIS, INFOR, Ultimo and others.

2.3 Meridian Products – Power and Explorer Named Users

The consumers of the engineering information requiring read-only access (typically in departments other than the engineering department such as Operations & Maintenance), are served with the **Explorer** client, provided on either Base, Standard or Plus level. The users making the modifications to the engineering information (typically in plant modification projects, project management or working with the CAD applications), can use the **Power** client, on either the Base, Standard or Plus level.



As shown in the above picture, the Base level products require the **Meridian Base Server**, while the Standard and Plus level products require **Meridian Enterprise Server**.

For collaboration with external contractors and suppliers we will launch the Meridian360 Portal later this year. The cloud based solution for documentation exchange integrates with Meridian 2015 on-premises. More details will be provided later this year.

2.4 Centralization & Web Accessibility

Besides the growing organizational requirements to manage technical asset related information, the IT requirements are also shifting. The market is moving more and more towards cloud based solutions, but we also see that owner operators are not willing to have all their IP in the cloud. Thus, they often opt for **centralization** while using cloud-based solutions for **collaboration** with external contractors and suppliers.

For centralized solutions, zero footprint web applications are needed, but working with large CAD files and their references creates high requirements for the technical infrastructure.

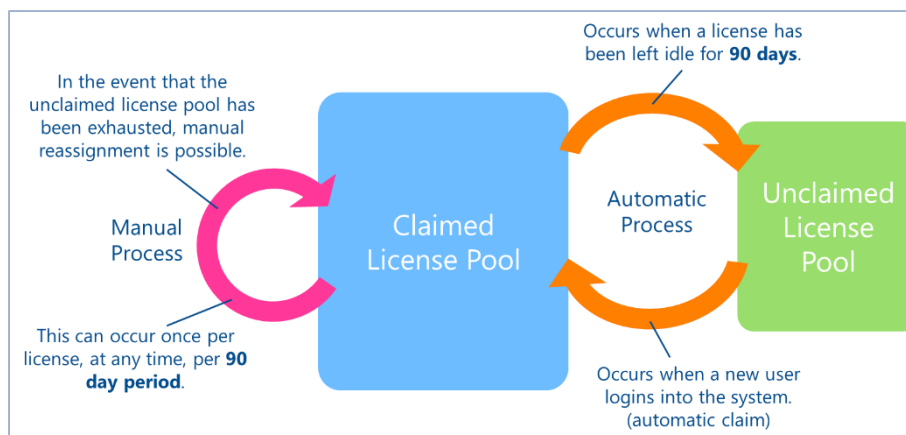


In the Meridian 2015 release we have addressed the high engineering related requirements by providing:

- Full featured web client
 - Remote CAD integration was introduced in Meridian 2012
 - Server based viewing was introduced in Meridian 2013
 - Web interface like Windows Power client introduced in Meridian 2015
- Site cache, new in Meridian 2015, for faster upload and download speeds document content can be cached on remote sites while still connecting to the central server for all vault information.
- Hypertrieve 5 as the default database engine in Meridian 2015, providing very high and consistent performance in large vaults with many users
- Default support for client virtualization (e.g. Citrix), under named licensing scheme.

2.5 Named User License Management

For new customers and those centralizing their Meridian environment (one license server for sites in multiple countries), license management is automatically handled by the Meridian License Manager. Upon first login, each user is assigned a named user license automatically and the licenses are claimed. This occurs automatically up until the unclaimed license pool is depleted. In parallel, the system also identifies claimed licenses which have been left idle for a period of 90 days. These are returned to the unclaimed license pool to be made available to new users.



Next to the automated processes above, manual reassignment of licenses is possible to reallocate claimed licenses to other named users. This can only be done once for each license per 90 day period.

3 MERIDIAN 2015 – POWER

Meridian Power is typically used for the “contributors” of engineering information within the organization; those users who require read-write access to the content. The capabilities of Meridian depend on the product level, Base, Standard or Plus. If the technical infrastructure requires more scalability, extensions can be purchased, see the appendix. The appendix also maps the Meridian modules to the product levels.

Remark:

Existing customers can continue working with their current licenses within the scope of their existing contract, unless they are centralizing their Meridian environment or virtualizing the clients (e.g. Citrix).

3.1 (CAD) Application Integration

Meridian provides integration with many applications. A full overview is provided in the Meridian 2015 Supported Software reference document, which also gives an overview of the supported operating systems and viewers.

- AutoCAD 2016 (including Civil 3D, Map 3D, P&ID, and Plant 3D)
- Inventor 2016
- SolidWorks 2015 SP1 and SP2

3.1.1 Viewer Improvements

In Meridian 2015 we support the latest version of AutoVue, 20.2.3, which supports the latest AutoCAD 2016 release and other DWG based applications. New in AutoVue is the support for Revit IFC models (see also paragraph 3.7).

Besides AutoVue, Meridian also supports other 3rd party viewers, among which are Autodesk Inventor View, eDrawings for SolidWorks, Autodesk Navisworks Freedom and as per Meridian 2014 SP1 we also support IGC Brava! Desktop.

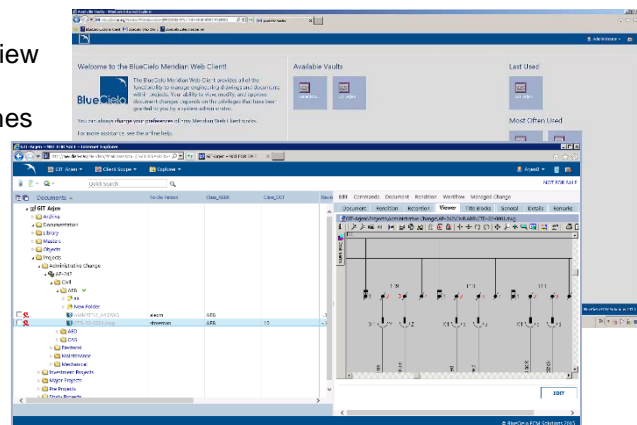
3.2 Power to the Web

For many years BlueCielo has offered users of Meridian to work in an Internet Explorer web browser. The functionality has always been a subset of the Windows Power-User client, until this release!

In Meridian 2015, we have made Web Access a major development theme for all Meridian Power product levels to support the IT centralization efforts of our customers.

The first visible change is the new welcome page that shows an overview of all the vaults the specific user is allowed to access. The color schemes and logo on the welcome page are configurable to match your corporate house style.

After entering a vault, the entire user interface looks more like the Windows Power client, with a scrollable document navigation panel, property pages of the selected document and a viewer



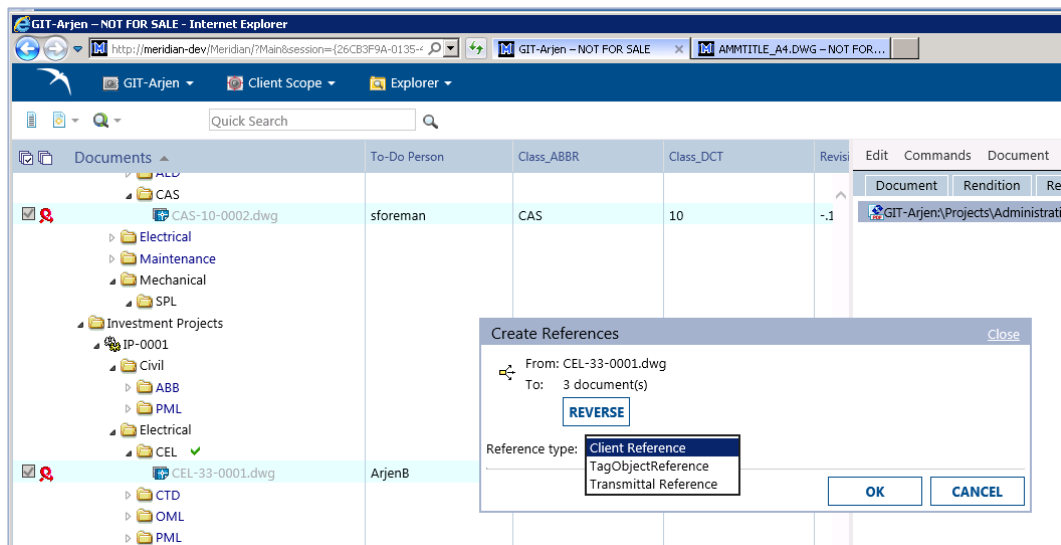
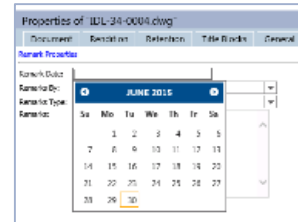
panel; all in the same Internet Explorer or Chrome window. The new frame for browsing documents (explorer view or navigation views) contains the following new features:

- Sizable columns with column headers
- Ability to sort/filter by column (property) values
- Ability to show the tree structure of views
- Show the document status
- In-frame scrolling keeping the header and footer on screen
- Indicates currently selected items (full row highlight) and multiple selected items

More important, the web version of the Power client supports all major functionality the Windows client does to enable engineers, project managers and CAD designers to fully participate in projects. This includes batch operations, such as import via drag and drop, batch conversion to hybrid documents (see previous page) and copying multiple documents.

Other new features in the Meridian 2015 Web Client are:

- Multi-layout property editing (see Power – Base)
- New calendar pop-up
- Batch logging and error handling
- Online help
- Shared workspace support that allows editing the options for shared application folders (for Power – Standard and – Plus)
- Easy interface to create custom references without the need to search for the destination documents

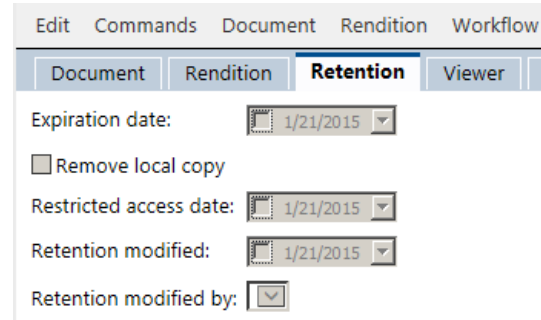


3.3 Power – Base

3.3.1 Retention Information

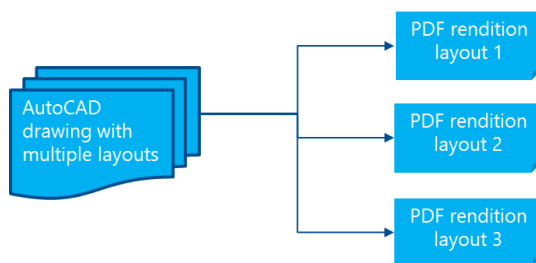
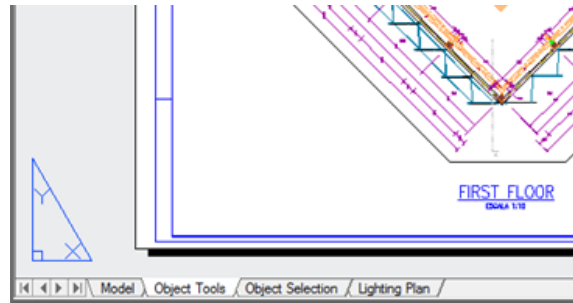
How long documents need to be stored (online, near line or in an archive folder) requires a retention policy, typically to comply with applicable regulations, such as the ARMA standard and Sarbanes Oxley.

In the Meridian environment retention information is typically necessary for archived and obsoleted documents. For that reason, we have added configurable retention dates for which specific access and actions can be controlled through scripting.



3.3.2 Multiple Sheet and Title block support for AutoCAD

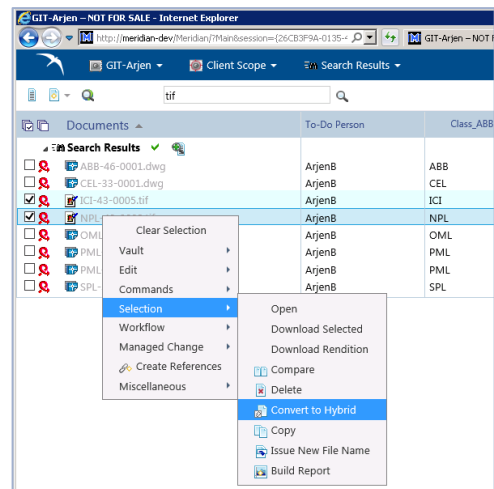
AutoCAD supports a model view and multiple layouts. Each layout can have its own title block with properties. In Meridian it is now possible (since the 2014 SP1 release) to edit the multiple title blocks in a property page. This allows bi-directional synchronization of Meridian properties with the properties in the corresponding layout title block.



Multiple layouts are also supported by our BlueCielo Publisher for Meridian. Individual layouts can be rendered to PDF files, which will automatically be referenced to the DWG file in the Meridian vault. Each PDF rendition of a layout can be put through a separate workflow for design review, allowing separate redlining, sharing and approval.

3.3.3 Convert to Hybrid

Scanned drawings or other raster documents can be imported into the Meridian vault. After import the files can be selected (one by one or as a batch) and converted into a hybrid documents with DWG files from preset templates. This is especially useful when a scanned document is to be modified for the first time.

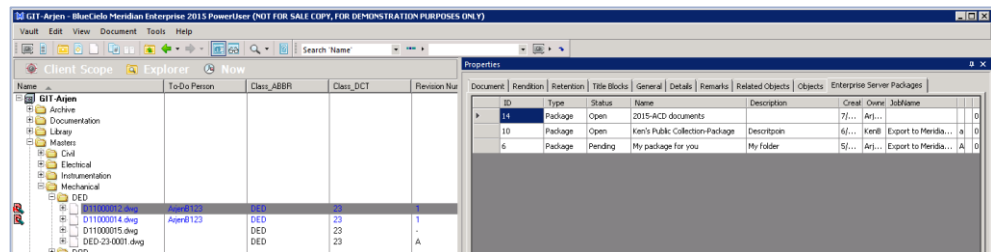


3.4 Power – Standard

Remarks:

- Meridian Power Standard includes all the enhancements discussed for Power Base
- For existing users of Meridian:
 - Existing customers can continue to work with their current licenses within the scope of their existing contract, unless they are centralizing their Meridian environment or virtualizing the clients.
 - Meridian Power Standard is the equivalent of the Meridian Classic license plus the Advanced Project Workflow module

- A new option for notifications has been added. Upon release of a sibling project copy, the users of the document in other projects can be notified.
- New in Meridian 2015 is the option to make project copies from retired documents. To allow this a new setting CreateProjectCopyForRetired has been added to the vault configuration
- Collaboration using export packages
If granted the rights to do so, users of Power Standard or Plus can create export packages (see also Explorer Standard).



In the Power user interface, all packages are shown that a specific document is assigned to. The document in the above image is included in three different packages.

The packages can be made available to non-Meridian users by publishing them as a ZIP file to a file server. But unlike the current briefcase functionality, Explorer packages allow distribution to FTP or HTTP web sites as well. Publishing the packages requires the Meridian Enterprise extension license “BlueCielo Publisher for File System”.

3.5 Power – Plus

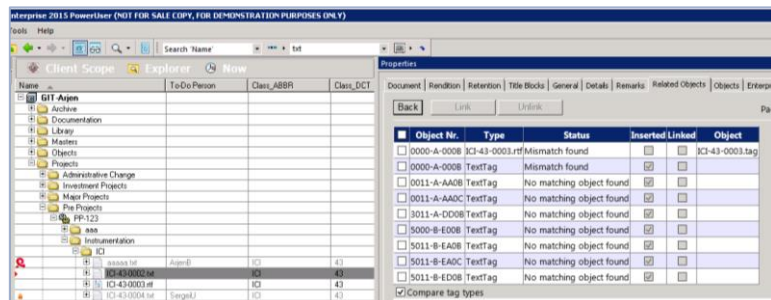
Remarks:

- Meridian Power Plus includes all the enhancements discussed for Power Base and Power Standard
- For existing users of Meridian:
 - Existing customers can continue to work with their current licenses within the scope of their existing contract, unless they are centralizing their Meridian environment or virtualizing the clients.
 - Meridian Power Plus is the equivalent of the Meridian Classic license with the Advanced Project Workflow module, Asset Management Module, and FDA Module (see the Appendix)..

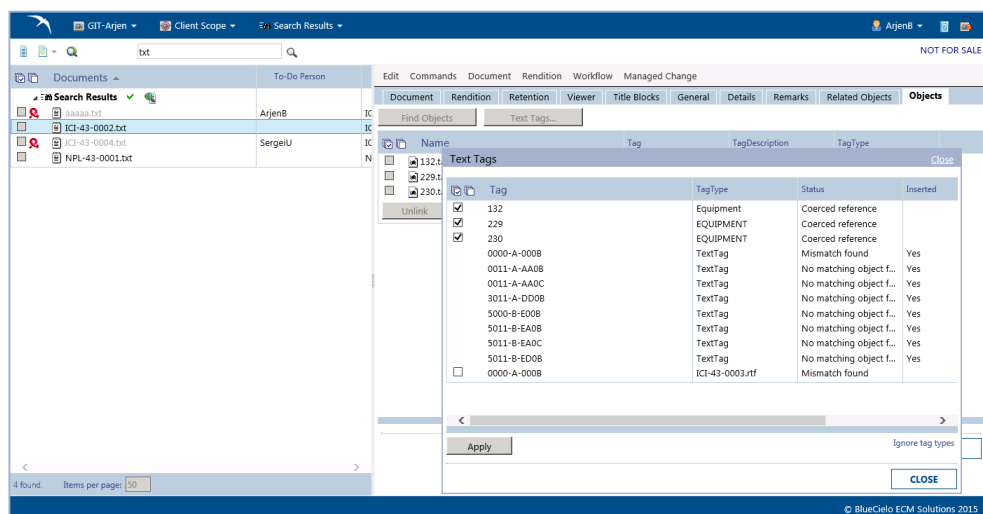
- A new Meridian menu item and AutoCAD ribbon icon have been added to the AutoCAD link that shows the Drawing Tags dialog box. This dialog box lists the asset tags that are found in the current drawing that match the link configuration. This dialog box was previously available only in the AutoCAD P&ID link. It can now be used to manage links to assets in standard AutoCAD drawings.



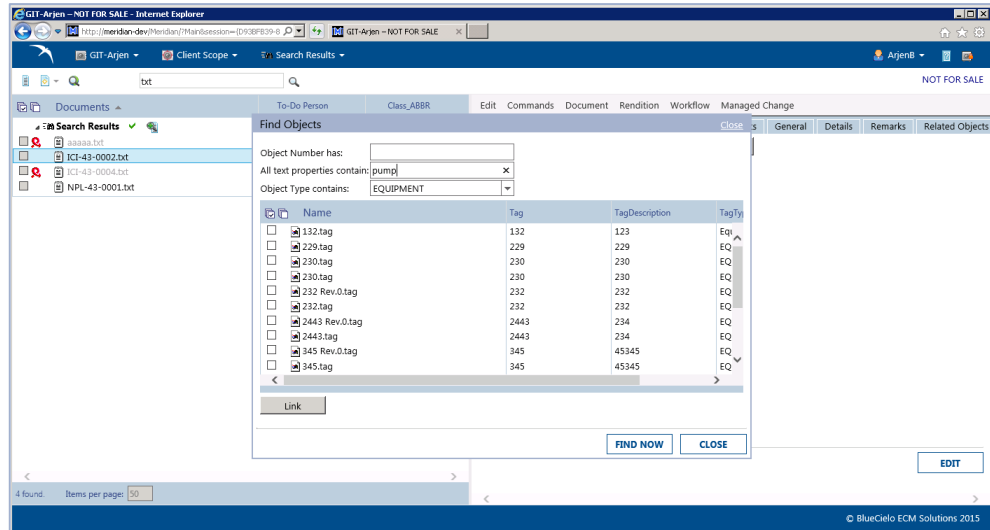
- On top of tag extraction for AutoCAD and AutoCAD P&ID, all file formats that have an iFilter available can be used for tag extraction. This allows extraction of tags from drawings and other document formats which in turn are used to create relationships between tags and documents.



- Tags can be extracted manually per document or scheduled for automatic extraction in a batch of documents (or the entire vaults contents) with validation through scripting.



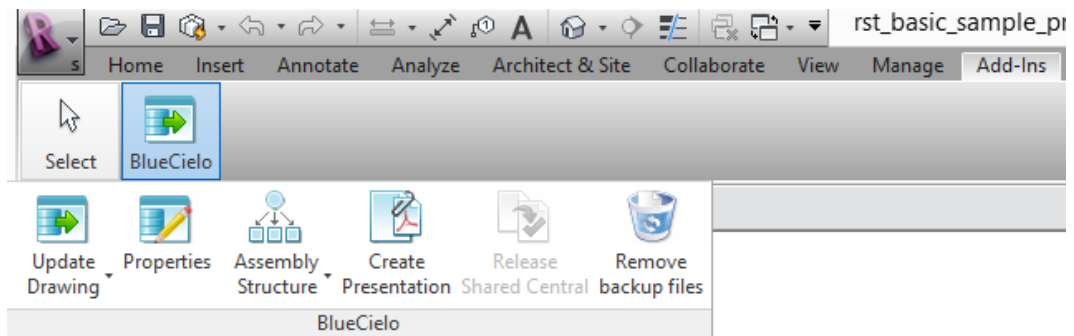
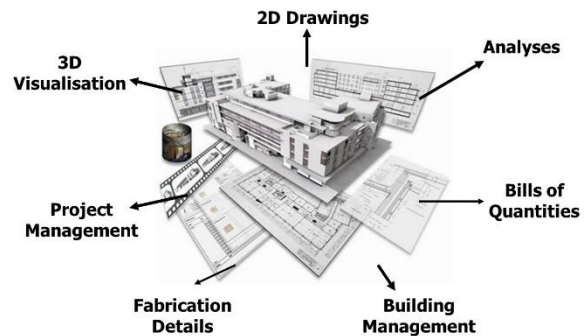
- The TagType setting of the AutoCAD link now supports object type names specified as literals, attribute values, and combinations of attribute values and constant strings.
- Meridian Tag-Doc relationship management is now fully supported through the Meridian Web client of the Power Plus level



3.6 Revit support for BIM

For Building Information Management, Autodesk Revit plays a prominent role in the market. The integration of Meridian 2015 with Autodesk Revit 2016 makes the management of design projects possible. In the Meridian 2015 release we have added new features that enable project teams to work on large Revit projects, allowing them to:

- View the design in 3D
- Control the design integrity through use of central and local models
- Enable concurrent engineering by managing work sets
- Review the 2D output by adding automatically generated renditions of the sheets into the workflow

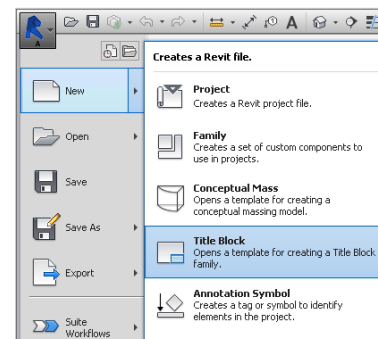


Within Revit, the BlueCielo ribbon is available via the Add-Ins menu, providing various commands to manage Revit projects:

- Update Drawing; synchronize model properties from and to the vault
- Properties; shows the Meridian property page of the model
- Assembly Structure; shows the assembly structure or the Where-Used dialog
- Create Presentation; generates a DWF file of the model, attaches the file as hybrid part and changes the document type of the model to a hybrid document.
- Release Shared Central; allows the engineer to make a new revision of the central model file. (This can be a time-consuming operation with large Revit models.)
- Remove backup files; removes the backup files from local workspace

The full set of BIM related features of Meridian 2015 are supported by Meridian Power Standard or Plus in combination with Revit 2016 and use of Shared Workspace for synchronizing local models with the central model. Enhancements in Meridian 2015 include:

- Support for custom properties
Properties other than system properties can be configured in the application link settings by a trained Meridian application engineer with the Meridian Configurator. This allows synchronization of custom properties with the:
 - Revit model
 - Drawing sheets, shown in the title block on the sheet (bi-directional)
 - Title block, allowing updating a single property across all sheets where the specific title block has been used

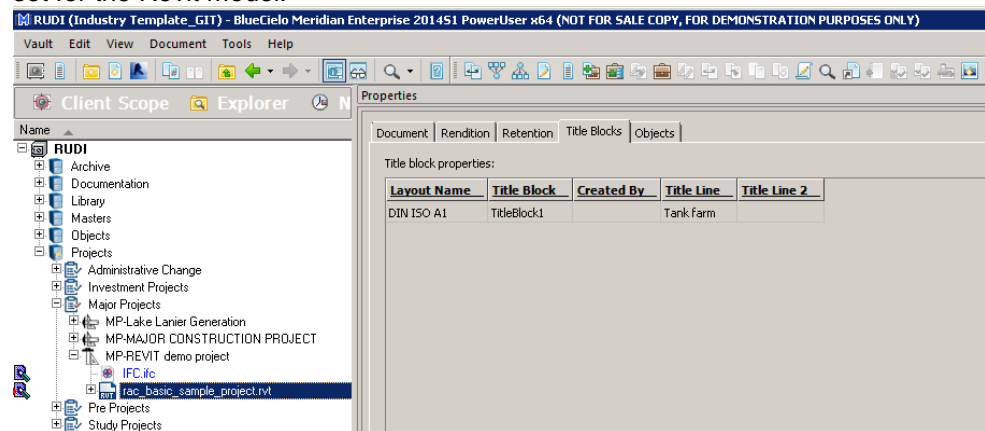


- Revit multi-layout support for sheets

Revit models can be represented through sheets, such as a top view, front view, section view, etc. All those sheets can have their own title block depending on the purpose of the sheet. In Meridian we support multiple layouts in AutoCAD and that same concept has been introduced to support multiple sheets in Revit.

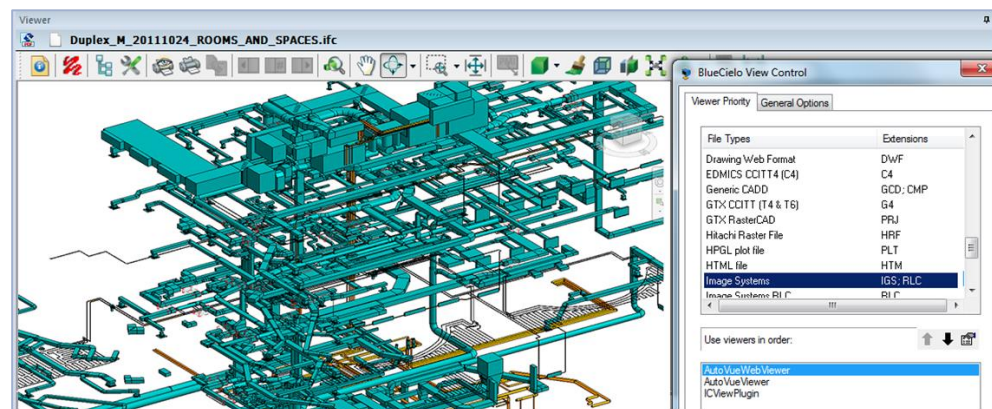
The settings for the sheets can be made in the application link for Revit in the Configurator. The Revit link now supports synchronization of both standard and custom properties. The property name may also be specified with the asterisk (*) wildcard character to signify all parameters in the category.

In Meridian Power a tab is added showing all the title blocks related to the sheet set for the Revit model:



- Viewing IFC Files

BlueCielo Publisher with Revit installed on the rendition server (rendering through native application) the model can be converted to an IFC file, which can be viewed with AutoVue 3D version 20.2.3



- Sheet Support for Revit Render Engine

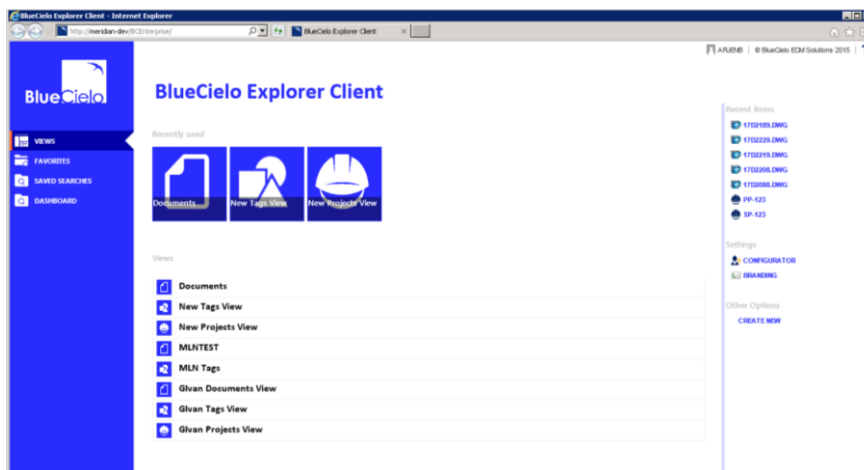
Besides generating an IFC file for the Revit model, the sheets can be rendered to DWF, DWG or PDF format. Each sheet can be added to the project folder in Meridian as separate file with their own workflow for separate design reviews. For DWG sheets, the standard to use for mapping of objects to layers can be selected.

4 MERIDIAN 2015 – EXPLORER

Meridian Explorer is typically used for the “consumers” of engineering information within the organization, those users who require read-only access to the content. Depending on the available content created by one of the three Meridian Power levels (Base, Standard or Plus) the corresponding Explorer level allows access to the available engineering information. For example Explorer Standard enables users to search by project and to view the status of the project documentation. At the Plus level the user can also search by tag number and find the related documentation or work with the data in the maintenance or facility management system. In Meridian 2015 we have aligned the key capabilities of Explorer to the three product levels and added new features, listed in the next paragraphs.

Remark:

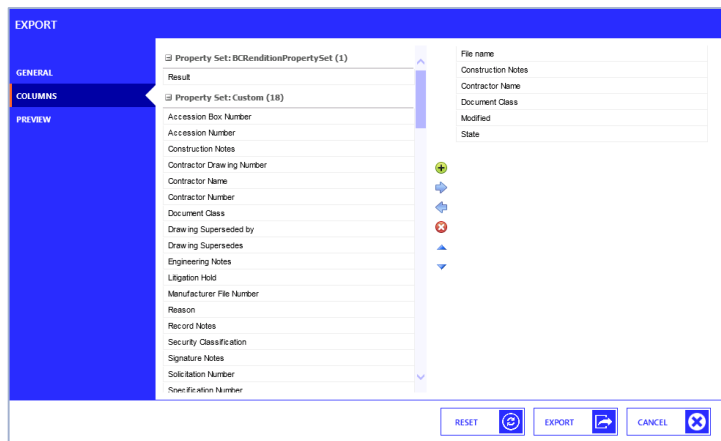
Existing customers can continue working with their current licenses within the scope of their existing contract, unless they are centralizing their Meridian environment or virtualizing the clients (e.g. Citrix).



4.1 Explorer – Base

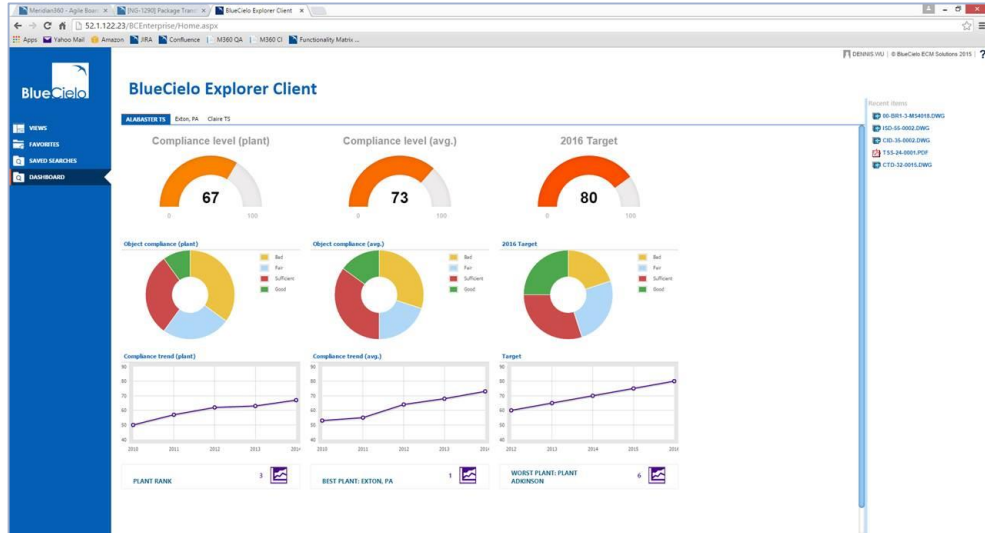
Reporting

Meridian Explorer allows generation of a report from the search results. With support of MS Excel 2007 or higher for exporting the data (.xlsx format), the reports can now have more than 255 columns. Although this is available for Explorer Base, it comes in most handy for reports with tag data, since tags typically have many properties.



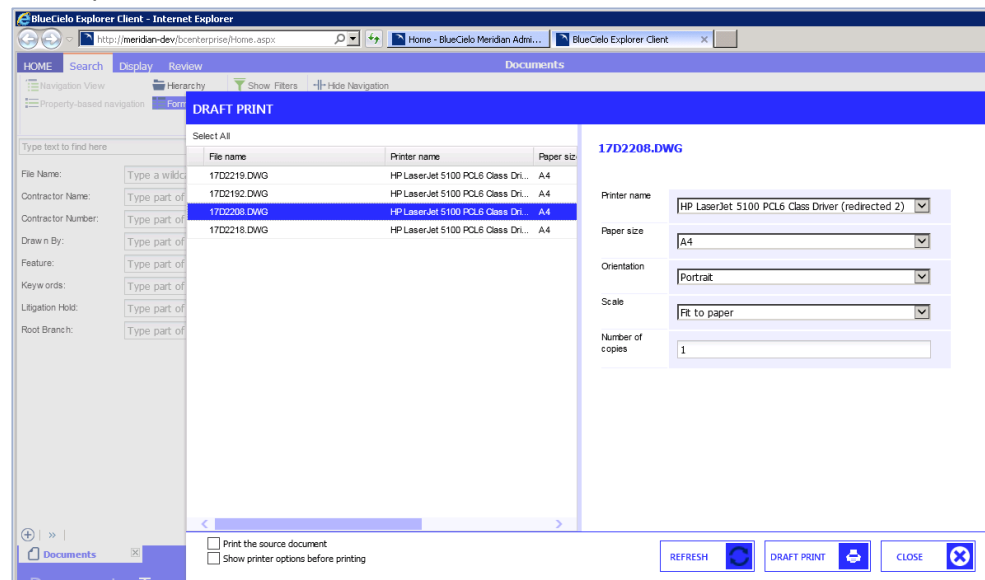
■ Dashboards

Dashboards can be made from the data available in the repository and require some configuration. If the standard dashboard tools are not sufficient, 3rd party tools can be integrated in the Explorer user interface.



■ Improved batch printing

After searching for the right documents, multiple documents from the search results can be selected for printing. The user can determine the page size and orientation and assign the appropriate printer or plotter for batch creation of hardcopies.



■ Set default document view

Each Explorer view can show the users the native document, the rendition of the document or allow them to see both.

- Switching views (see also Explorer Plus)
New shortcut tabs have been added to the Explorer user interface. The shortcuts depend on the Explorer product level. For Explorer Base the user can quickly switch from the Document view to the Collection view.

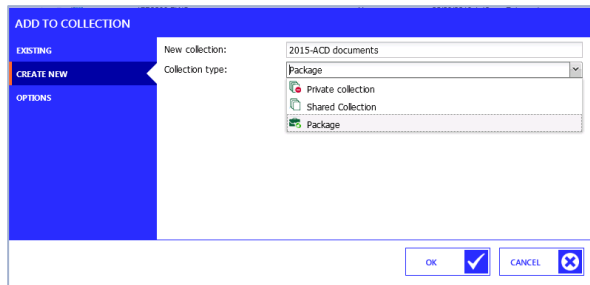
All open tabs in each view are remembered when switching from one view to another. To start from scratch in a view, the user can go to the home page or close all tabs in the view with a right mouse click on the tab.

4.2 Explorer – Standard

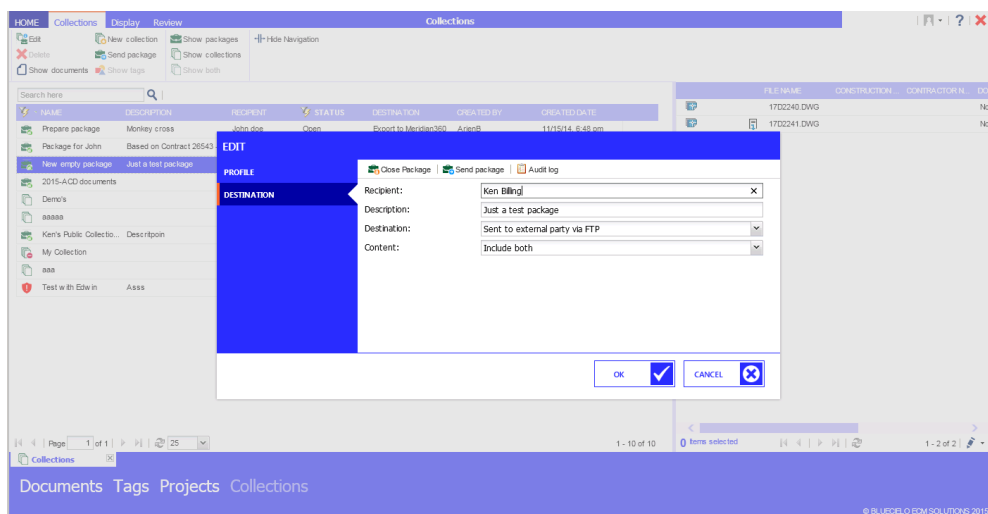
Remark:

- Meridian Explorer – Standard includes all the enhancement discussed for Explorer Base
- Existing customers can continue to work with their current licenses within the scope of their existing contract, unless they are centralizing their Meridian environment or virtualizing the clients (e.g. Citrix).

- Collaboration with export packages
If granted the rights to do so, users can create export packages. Export packages are collections extended with a destination, an audit trail and revision awareness. An existing collection can be converted into a package and made accessible to specific users.



An export package can be created in Explorer and made available to non-Meridian users by publishing the package as a ZIP file to a file server, FTP server or HTTP server (website). This requires a “BlueCielo Publisher for File System” license.



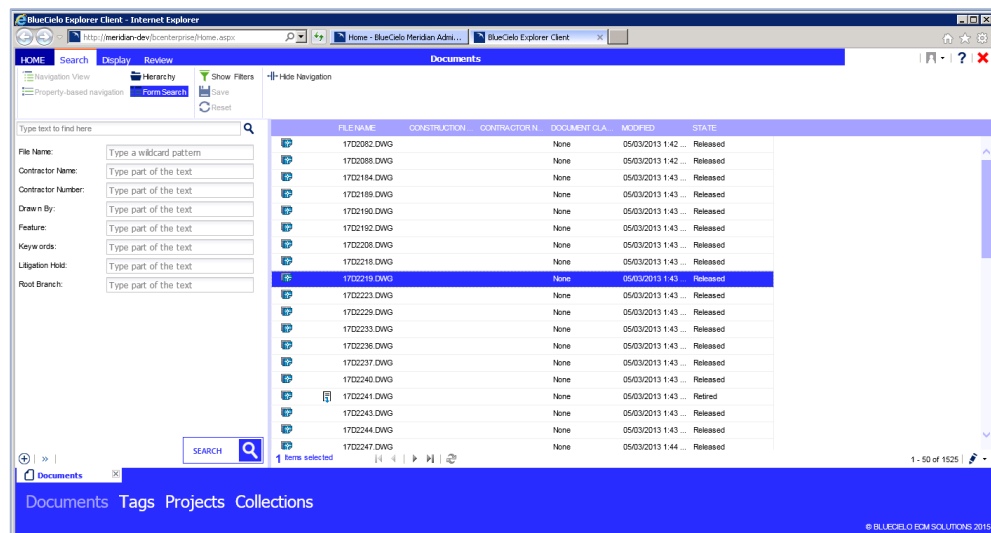
- Switching views (see also Explorer Base)
With Explorer Standard, users can switch between the Document view, Collection view and the Project view.

4.3 Explorer – Plus

Remark:

- Meridian Explorer Plus includes all the enhancement discussed for Explorer Standard
- Existing customers can continue to work with their current licenses within the scope of their existing contract, unless they are centralizing their Meridian environment or virtualizing the clients (e.g. Citrix).

- Switching Views (see also Explorer Base and Standard)
With Explorer Plus, users can switch between the Document view, Collection view, Project view and the Objects view.



4.4 Explorer Mobile

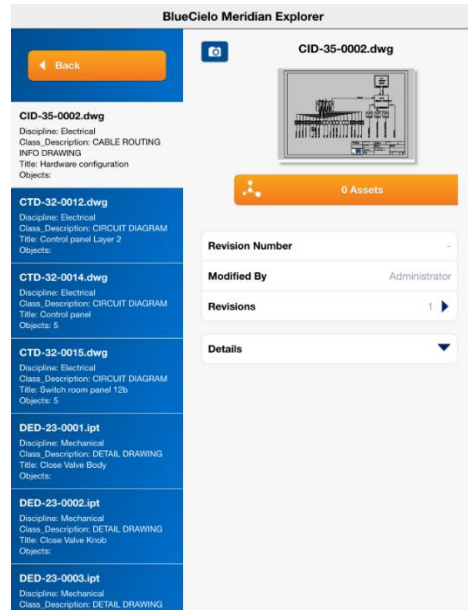
Meridian Explorer can be used from either a standard web browser or an iPad app. The iPad app, Meridian Explorer Mobile, has its own release cycle and version numbering, which are different from Meridian.

Meridian Explorer Mobile is available for free from the iPad App store and requires licenses registered in Meridian Enterprise Server. The new features of BlueCielo Meridian Explorer Mobile 1.02 include:

- For Explorer – Base, Standard & Plus:
Pictures can be uploaded as comments to a Document (or asset for Explorer Plus users), making it easier for Explorer users to submit their feedback.
- For Explorer – Base, Standard & Plus:
It is now possible to hide the Assets view for those customers that do not manage asset information with Meridian.

- For Explorer – Plus:
The ability to open the app via a hyperlink from another application, for example a maintenance or facility management system. Users working with Maximo or SAP EAM on the iPad can click a button in Maximo that launches the Explorer Mobile App with a search query that shows the related technical documentation.

This functionality to open Explorer Mobile is also possible via a hyperlink on a website or in an email. In this way a notification can be sent by email and the iPad user can directly see the referenced document in the Explorer Mobile App.



5 MERIDIAN 2015 – PLATFORM

5.1 Meridian Base Server

The Meridian Base Server license is required for the Base level user licenses. The Base Server license allows configuration of the Meridian environment to meet specific customer business needs (either with the BlueCielo Industry Template or configuration from scratch). The Meridian Base Server license enables use of the following solution components on one specific Windows server:

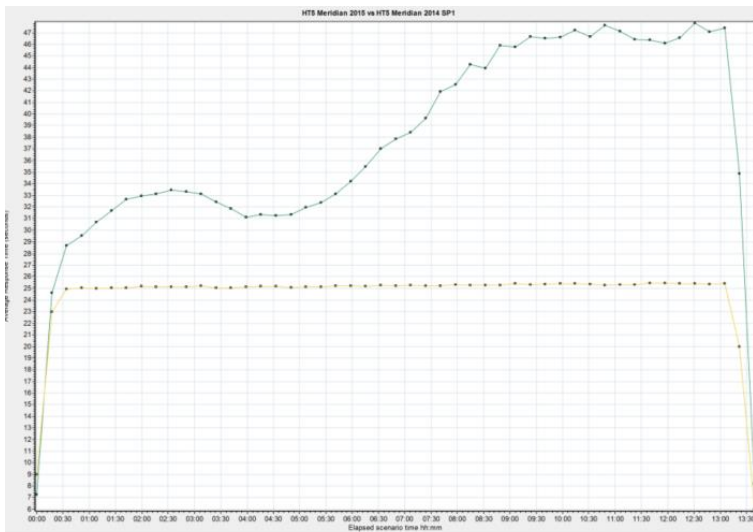
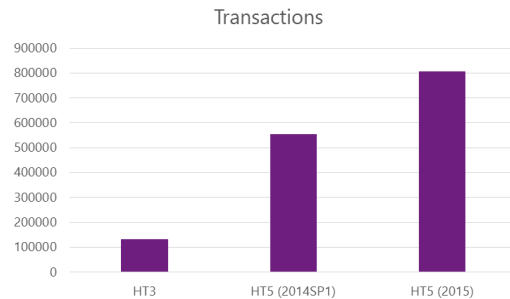
- Meridian vault(s), stored in either native Hypertrieve, MS SQL Server or Oracle databases (respective licenses not included).
- Explorer Repository, stored in either a MS SQL Server or Oracle database (respective licenses not included).
- Rendering with BlueCielo Publisher. Output to PDF is provided out of the box with AutoVue 2D (license is included).
- License Server, to manage the appropriate client and/or server licenses for supported devices.

Remark:

Existing customers can continue to work with their current licenses within the scope of their existing contract, unless they are centralizing their Meridian environment or virtualizing the clients (e.g. Citrix).

New in Meridian 2015:

- Hypertrieve 5 is the default database engine
Although introduced in earlier Meridian releases we have now made Hypertrieve 5 the default database engine of Meridian 2015. After extensive testing and further enhancements, the engine has become very stable and is 6 times faster than Hypertrieve 3 (the former default database engine).



The effect of Hypertrieve 5 is that more content can be stored in Meridian and managed by more users, while the user experience remains constant (see flat line in the graph).

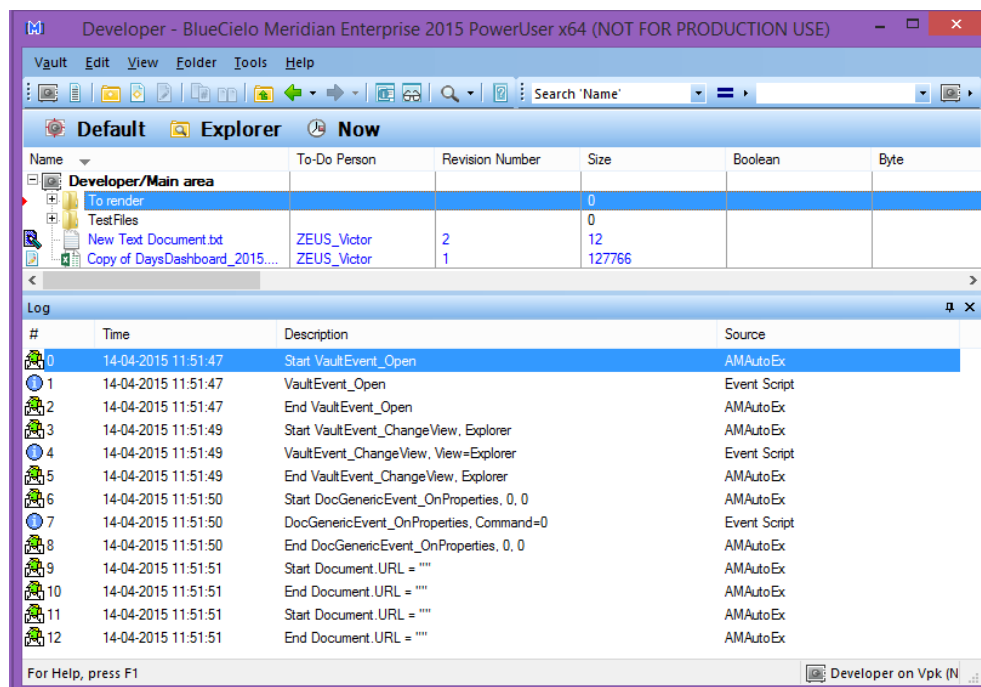
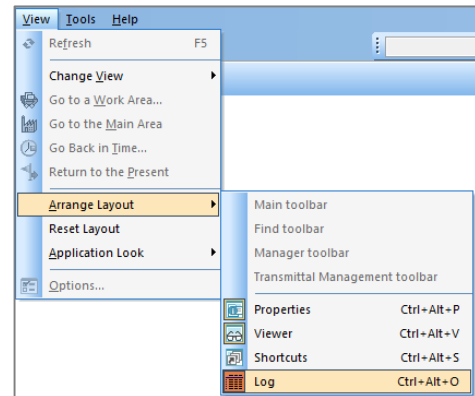
- Simplified setup and administration

In Meridian 2015 we have further consolidated and simplified the Server setup. There is no need for Power client setup on the server anymore and desktop shortcuts are configurable for remote client installations. The installation of the Publisher is also simplified; the CAD links for rendering through native application can be selected during setup.

- Script logging

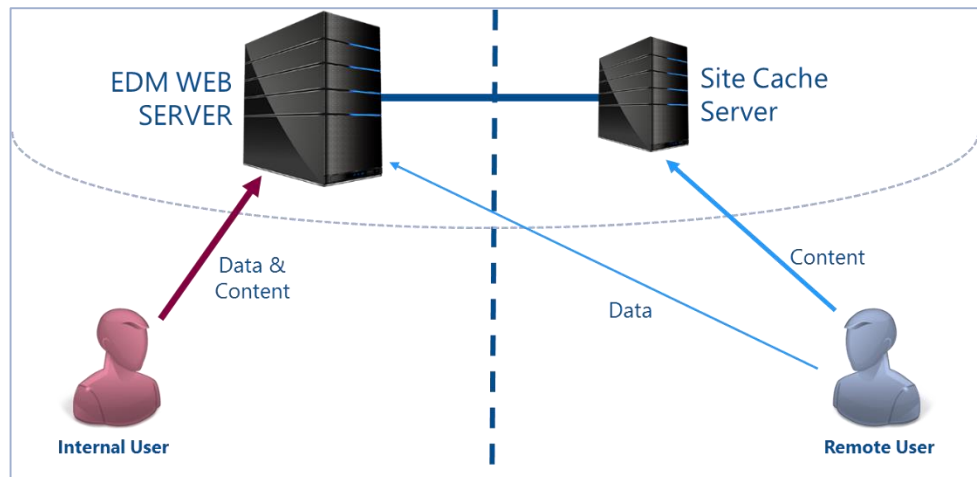
In the Windows and Web access user interface of the Power client, it is now possible to store events and their parameters to a log file to assist with debugging. In the log file it is much easier to see in which order the events are fired, the time needed for each event and the parameters that are passed. Also error messages are recorded.

The log file can be viewed with a command on the [View] menu in the windows version of Meridian Power while in the web version as 'Download log'.



- Site cache

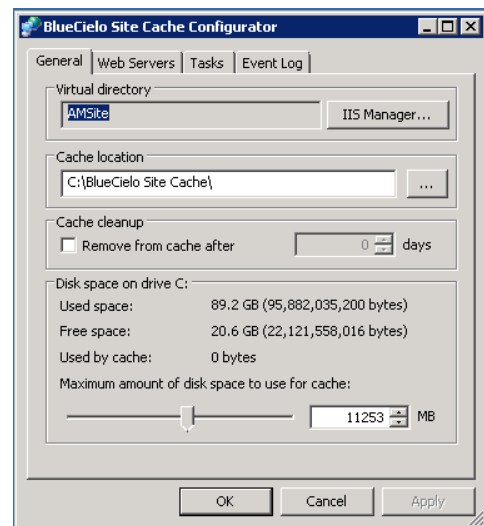
A site cache is a local cache at a remote site where documents can be cached for faster access by a group of users. This improves download times when working with the Power web client. Downloading documents for editing becomes a lot faster for those sites that have a site-cache configured.



Site caches must be installed and configured at the local server and then enabled for local users.

- Rendering & publishing (BlueCielo Publisher)

- Settings common among rendering modules have been standardized.
- Windows Server 2012 is not supported for the AutoVue rendering module.
- PDF rendering now adds the text to the full-text search index.



- Rendering with use of the Publisher extension “Render with Native Application” for Meridian 2015, requires installation of the native application on the render server, comes the following new options for rendering files:

- To convert AutoCAD DWG or DXF files to PDF, an AcmeCAD rendering module can be used as an alternative to the AutoVue rendering module. AcmeCAD must be purchased separately. It works on Windows Server 2012 and supports AutoCAD pen settings.
- Rendering MicroStation drawings
 - Native MicroStation rendering is no longer available!
 - The Teigha rendering module must be used to convert MicroStation DGN to Adobe PDF.

5.2 Meridian Enterprise Server

The Meridian Enterprise Server supports the Standard and Plus user licenses. The Enterprise Server provides advanced configuration of the Meridian environment to meet specific customer business needs (with either the BlueCielo Industry Template or configuration from scratch). The Meridian Enterprise Server license enables use of the following solution components across **multiple** Windows servers (however there may only be one instance of each solution component on any one server):

- Meridian vaults stored in either native Hypertrieve, MS SQL Server, or Oracle databases (respective licenses not included).
- Explorer repository stored in either a MS SQL Server or Oracle database (respective licenses not included).
- Rendering with BlueCielo Publisher. Output to PDF is provided out of the box with AutoVue 2D (license is included).
- License Server to manage the appropriate client and server licenses for supported devices.

Remark:








- Meridian Enterprise Server includes all the enhancement discussed for Meridian Base Server
- Existing customers can continue to work with their current licenses within the scope of their existing contract, unless they are centralizing their Meridian environment or virtualizing the clients (e.g. Citrix).

New in Meridian 2015:

- Simplified setup and administration
In Meridian 2015 we have further consolidated and simplified the server setup for both the Base Server and the Enterprise Server. For Enterprise Server we have also included the server setup for the Global Collaboration Framework module.
- Global Collaboration Framework (GCF)
Meridian Enterprise Server includes a GCF license that enables synchronization of engineering content between vaults located on different Meridian servers if they also have a GCF license. Using GCF allows globally-dispersed project team members to collaborate on a project, while working in their LANs with the Meridian Power client. This is most beneficial for large CAD files and assemblies.

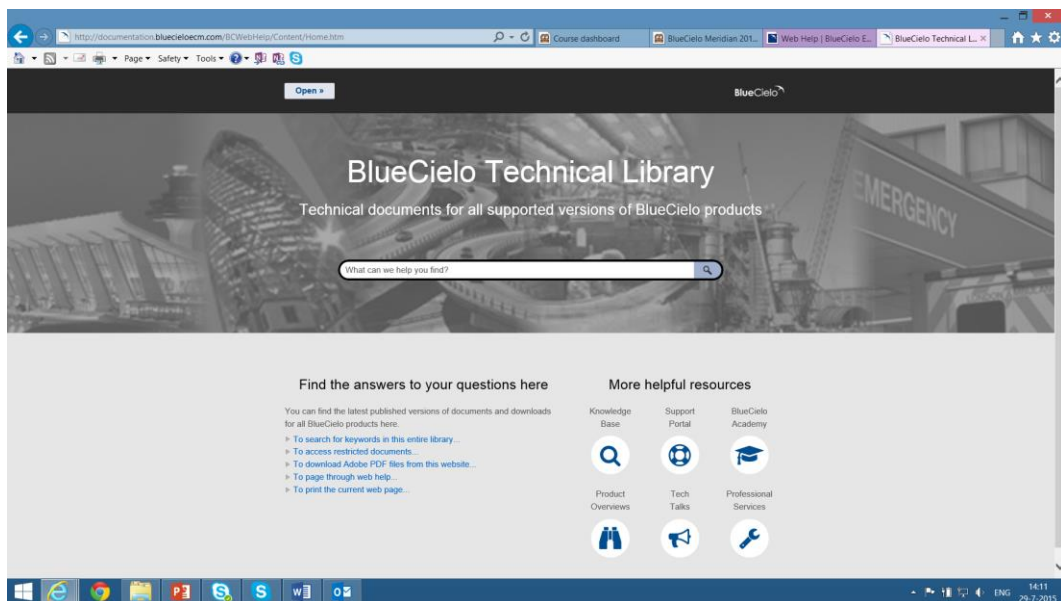
To monitor the synchronization progress, we have added logging to a central database. Reports and applications can be developed with Microsoft Reporting Services and for example shown in an MS SharePoint project portal.

- Rendering with use of the Publisher extension “Render with Native Application” for Meridian 2015, requires installation of the native application on the render server, comes the following new options for rendering files:
 - Support of Autodesk Revit as a native application allowing conversion of Revit files (rfa/rvt) to DWF(x), IFC or image formats. Both DWF and IFC can be viewed with AutoVue.
 - After release of a Revit model the IFC file can be generated by the Publisher and stored in the Meridian vault as a rendition of the model.
 - Another option is rendering Revit models to NWD (Navisworks) file format. This requires use of Autodesk Navisworks Freedom in the Meridian clients.

	AutoVue Render using Oracle AutoVue
	Microsoft Office Render using the native Microsoft Office application
	AutoCAD Render using the native AutoCAD application
	Inventor Render using the native Inventor application
	SolidWorks Render using the native SolidWorks application
	Teigha Render using Teigha components
	Revit Render using Autodesk Revit application
	Acme Render using Acme CAD Converter

5.3 Documentation updates

All of the product manuals for the Meridian Enterprise 2015 suite are now available in the BlueCielo Technical Library: <http://documentation.bluecieloecm.com/>. The library home page has been redesigned with a more modern, frameless look and feel.



Navigating to and opening a specific manual no longer requires several clicks to drill down to what you're looking for. Now simply hover your mouse over the **Open** button at the top of the page and follow the fly-outs to your destination with one click. There are no intermediate pages like before that listed the documents for each particular release and the available formats. This new site only presents the web help and Adobe PDF versions of the manuals. The MS HTML Help and installable web help files are still available upon request.

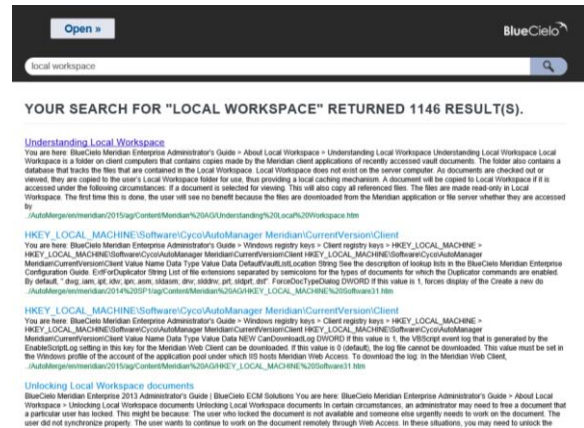


The search engine has been replaced, allowing to search across the entire library from the search box in the middle of the page. The search results will show the topic headings and short excerpts from every matching topic in the library sorted by relevance, including secured documents.

Click the title of the topic you want to view and, if the document is secured, you will be prompted for your login credentials. If the document is unsecured, it opens immediately for viewing.

To download the Adobe PDF version of a manual for offline viewing or distribution to others, first open the web help version and then click the PDF button in the topic toolbar for the page size that you want. The PDF file will open in a new window where you can view, download, or print it.

Users of the Technical Library can access many other helpful resources right on the library home page, such as the Knowledge Base, the Support Portal and links to specific resources on our website.



6 APPENDIX - MODULE MAPPING

In previous BlueCielo Meridian releases we provided many key capabilities through separate modules. In Meridian 2015 we have bundled the key capabilities into the Base, Standard and Plus levels according to the following table:

Module	Base	Standard	Plus
Publisher	✓	✓	✓
Explorer	✓	✓	✓
Advanced Project Workflow		✓	✓
Shared Workspace		✓	✓
GCF		✓	✓
Regulatory Compliance (FDA)			✓
Asset Management			✓
Server	Base Server* Single Server	Enterprise Server Multi-Server Capability	

*The Base Server is not eligible for server extension licenses

For existing customers who do work with the various Meridian modules the following table gives an overview where product enhancements for those modules are described:

- Advanced Project Workflow Module
 - See Power Standard, page 10
 - See Explorer Standard, page 17
- Asset Management Module
 - See Power Plus, page 11
 - See Explorer Plus, page 18
- Email Manager, no enhancements in Meridian 2015
- Explorer
 - See Explorer Standard, page 17
- FDA Module, no enhancements in Meridian 2015
- Global Collaboration Framework
 - See Meridian Enterprise Server, page 23
- Publisher
 - See Meridian Base Server, page 22
 - See Meridian Enterprise Server, page 24



7 BLUECIELO ECM SOLUTIONS

Owner Operators act on a dynamic and globalizing market in pursuit of the highest possible profitability. Both internal and external factors change the circumstances constantly, requiring the plant manager to take appropriate action. The convergence of these market dynamics makes it hard for organizations to maintain crucial asset information as-built to reach the highest possible profitability.

BlueCielo delivers a system of record to discover, monitor, and protect as-built technical asset information, providing the basis for operational results, created and exchanged during engineering while used in every day operations & maintenance. By measurably reducing risk BlueCielo provides Owner Operators new confidence to demonstrate compliance while protecting their customers, brands and intellectual property.

As an independent global player, BlueCielo has built the largest share of proven worldwide successful customer deployments in the past 30 years. Through our focus and commitment, we have built unparalleled expertise within the field of Asset Information Management, contributing daily to the revenue of the largest global enterprises.

The company is headquartered in The Netherlands and has offices in America, Brazil, Finland, Russia and the United Kingdom next to an international network of solution partners that ensures global service and support for its software solutions: BlueCielo Meridian Enterprise and related modules. BlueCielo is an official partner of Autodesk, IBM, Microsoft, Oracle and SAP.

Global Headquarters BlueCielo ECM Solutions

Polarisavenue 1
2132 JH Hoofddorp
The Netherlands

T +31 (0) 88 0225700

F +31 (0) 88 0225701

info@bluecieloecm.com

<http://www.bluecieloecm.com/>

Please look at our website for contact details of our other local offices:

www.bluecieloecm.com/bluecielo-offices-worldwide

© 2014 Copyright BlueCielo ECM Solutions BV. All rights reserved. BlueCielo is a registered trademark of BlueCielo ECM Solutions. All other brand names, product names, or trademarks belong to their respective holders.