

Ositech Bluetooth Dongle Operational Instructions

Document Status: Released

Title: Bluetooth Dongle Operational Instructions	Revision: H
Document # : 48x414-PHYSIO-CONTROL-002	Page 1 of 31

Revision History

DATE	REV	REASON
February 01, 2007	A	Initial Release
April 25, 2007	B	Updated for new firmware (BG - 2.3.0 Build 65)
June 04, 2007	C	Updated for Wizard mode configurator
June 20, 2007	D	Added various Bluetooth stack information to Appendix
July 10, 2007	E	Updated to Configurator 6.0.0.25
July 24, 2007	F	Removed programming device installation details
Aug 14, 2007	G	Updated screens/text from Discovery Settings to Service Settings
March 19, 2009	H	Updated references to Physio-Control, added support for Vista and 64bit platforms

Table Of Contents

1 INTRODUCTION 4

1.1 Purpose 4

1.2 Scope 4

2 BASIC BLUETOOTH DONGLE OPERATIONS..... 5

2.1 Ositech Bluetooth Dongle Configuration Overview 5

2.2 First Time Operation 6

2.3 Pairing The Ositech Bluetooth Dongle To A Discovered Computer..... 8

3 ADVANCED OPERATION INSTRUCTIONS..... 12

3.1 Advanced Options Overview 12

3.2 Pairing The Ositech Bluetooth Dongle To A Discovered Phone/Modem 12

3.3 Discovering / Pairing The Ositech Bluetooth Dongle From A Computer 12

3.4 Discovering / Pairing The Ositech Bluetooth Dongle From A Phone/Modem..... 12

4 APPENDIX..... 12

4.1 OsiBT.ini Usage 12

4.2 Physio-Control Software Configuration..... 12

 4.2.1 Microsoft Windows XP SP2 and Vista Bluetooth Stack 12

 4.2.2 Toshiba Bluetooth Stack..... 12

 4.2.3 BlueSoleil Bluetooth Stack 12

 4.2.4 Widcomm Bluetooth Stack 12

1 INTRODUCTION

1.1 Purpose

This document illustrates operational instructions of the Ositech Bluetooth dongle under the Windows XP operating system, using the Ositech Bluetooth Configuration software.

Please be advised that only Windows 2000, Windows XP 32bit, Windows XP 64bit, Windows Vista 32bit, and Windows Vista 64bit are supported with this product. Windows ME and below (Windows 98SE, 98, and 95) are unsupported with this CDROM.

1.2 Scope

For references within this document, the Programming Device can be USB cable, a PC Card interface, or a Serial DB9 cable.

The appendix has a section, which documents the various options within the OsiBT.ini file.

Once the Ositech Bluetooth dongle has been properly configured and paired, you can then simply connect the Ositech Bluetooth dongle to your host system for wireless Bluetooth connectivity.

For diagnostic and troubleshooting purposes, a LogFile.txt file will be created on your hard drive, in the same location/folder as the configuration software.

2 BASIC BLUETOOTH DONGLE OPERATIONS

2.1 Ositech Bluetooth Dongle Configuration Overview

In order to understand the various different operational qualities of the Ositech Bluetooth dongle, this section will explain the terminology that you need to understand with respect to Bluetooth configuration and operations.

LIFEPAK 12 /15™ is trademark of Physio-Control. It will hereby be referred to as LP12 / 15 / 15 within the scope of this document.

Since there are always two devices that need to be employed for Bluetooth operation, you need to determine how the devices will connect to each other, and the services the devices support.

DISCOVER. This means that the Bluetooth device will search out looking for any available Bluetooth devices that may be present in your vicinity.

DISCOVERABLE. This means that the Bluetooth device will put itself into a mode that will allow other Bluetooth devices to find it.

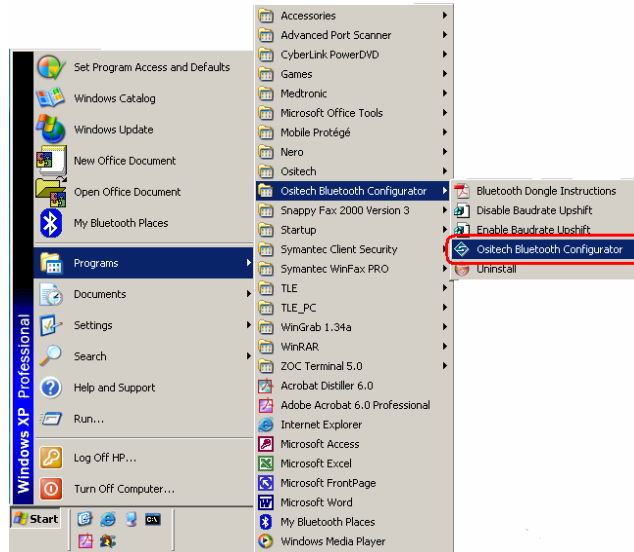
With respect to your Bluetooth configuration, one device will be placed into Discover mode, such that it can search out any available devices, while the second device will be placed into Discoverable mode, such that the other Bluetooth device can discover it. By its default operation, the Ositech Bluetooth Wizard software will place the Ositech Bluetooth dongle into Discover mode so that it can find available Bluetooth devices that are present in your vicinity. Because of this, the device you choose to pair and connect with must be placed into Discoverable mode so that the Ositech Bluetooth dongle can find the device. In any Bluetooth pairing, one device must be set as discoverable and the other set to discover the other.

Serial Port Profile (SPP or 1101). This service can be described as a method to connect to a computer/tablet PC. Typically, this service is used when you wish to connect the LP12 / 15 defibrillator via an Ositech Bluetooth dongle to remote computer/tablet PC's that will be operating Physio-Control software, such as CODESTAT or DTX Express.

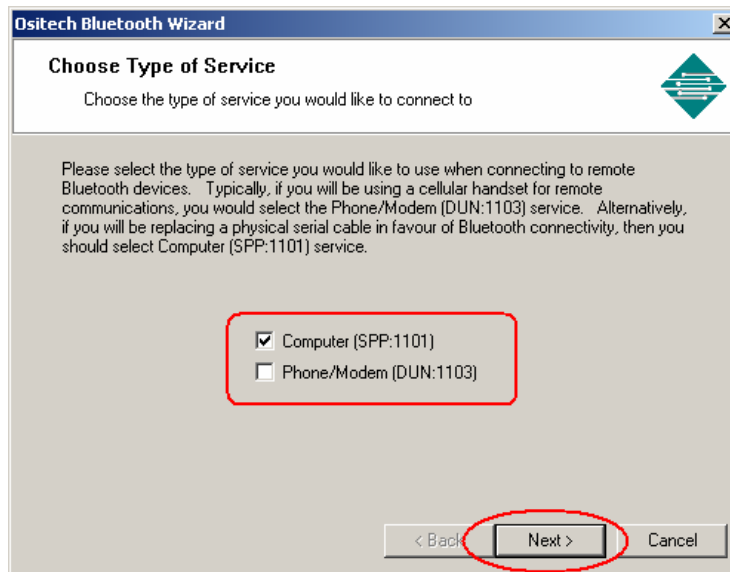
Dial-Up Networking Profile (DUN or 1103). This service can be described as a method to connect to a cellular handset. Typically, this service is used when you wish to connect the LP12 / 15 defibrillator via an Ositech Bluetooth dongle to a cellular handset for remote data transmissions over the cellular network.

2.2 First Time Operation

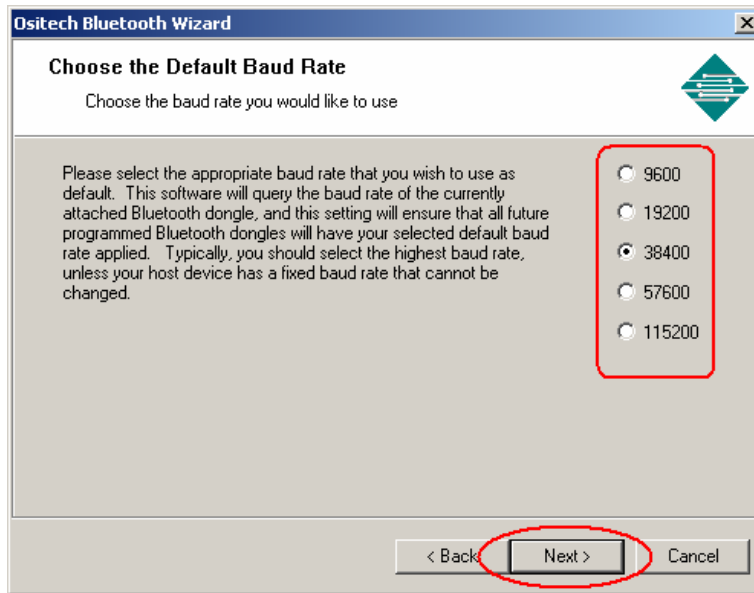
1. If you have previously selected to launch the Ositech Bluetooth Configurator from your installation setup, the software will now load. Alternatively, you may select to launch the Ositech Bluetooth Configurator via your Start Button menu. You will find the link from your Start Button, select Programs, and then under your Programs list, you will observe a folder Ositech Bluetooth Configurator, and finally in this folder, select Ositech Bluetooth Configurator. Your Start Button view may be different from the illustration below.



2. Since this is the first time the Ositech Bluetooth Configurator software has been run, you will be asked to select which type of service you wish to connect to. By default, Computer (SPP:1101) is checked. Click Next to continue.



3. You will now be asked to select the baud rate of your choice. By default, 38400 is selected, as this is the default baud rate for Physio-Control software. Click Next to continue.



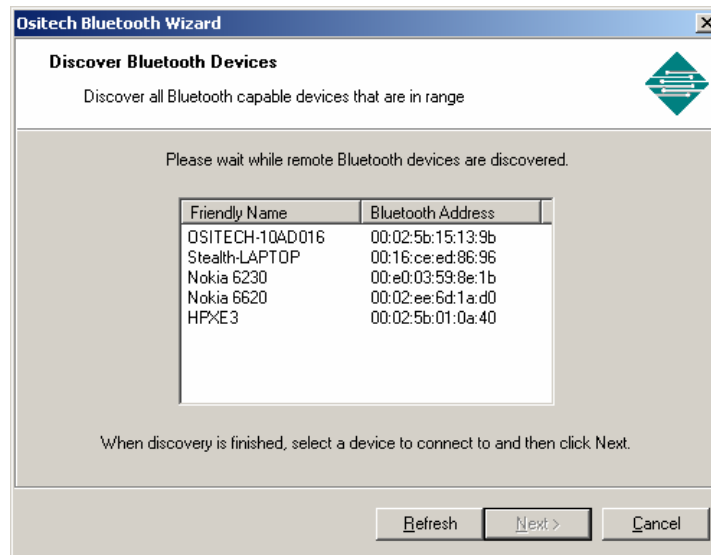
4. Please proceed to section 2.3 to continue with the actual configuration of your Bluetooth dongle.

2.3 Pairing The Ositech Bluetooth Dongle To A Discovered Computer

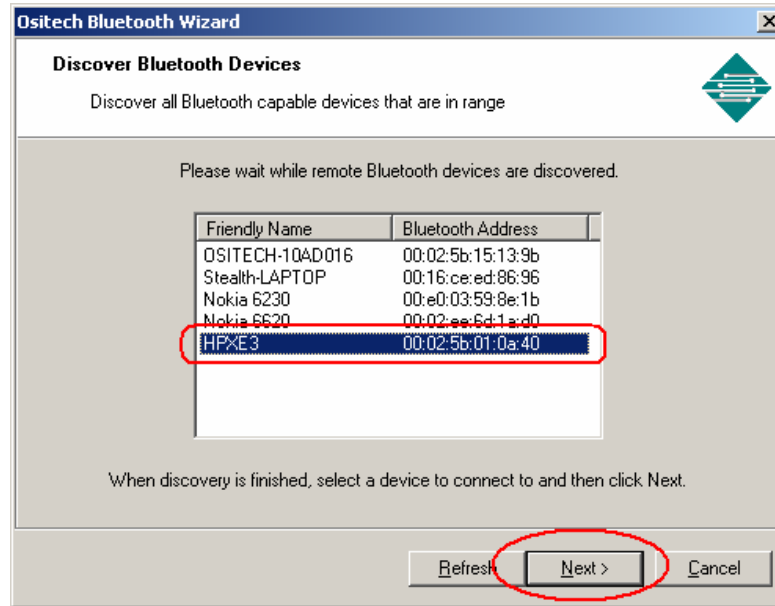
1. The Ositech Bluetooth Wizard will now welcome you. Once the Next button has become available, the Wizard has successfully detected your attached Bluetooth dongle. Click the Next button to proceed with the Bluetooth dongle's configuration. An LP12 / 15 unit to a computer/tablet PC with Physio-Control software would use this mode of operation traditionally.



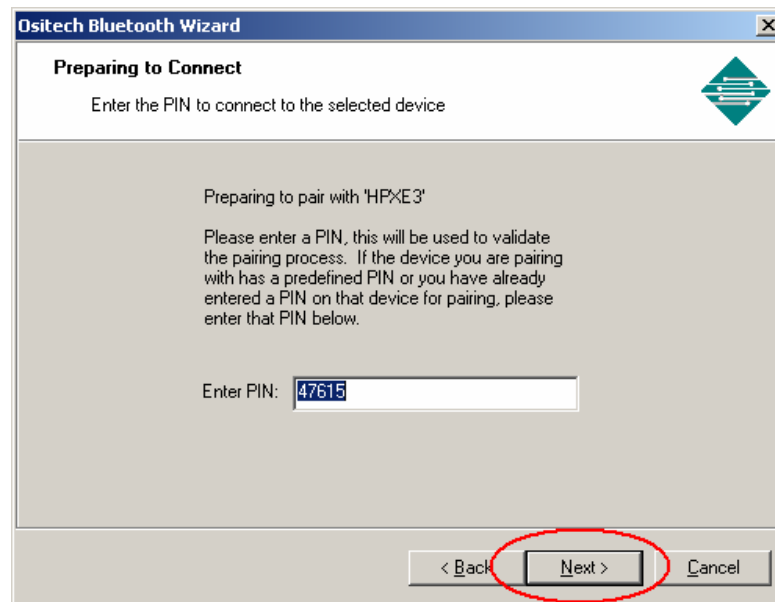
2. The Ositech Bluetooth Wizard will now display a list of all Bluetooth devices that are in range and discoverable. The list of available Bluetooth devices that you observe will be different, and if, however, you still do not observe your device from the pick list displayed, ensure your remote device is enabled, set to be discovered, and then click the Refresh button to begin discovery once again.



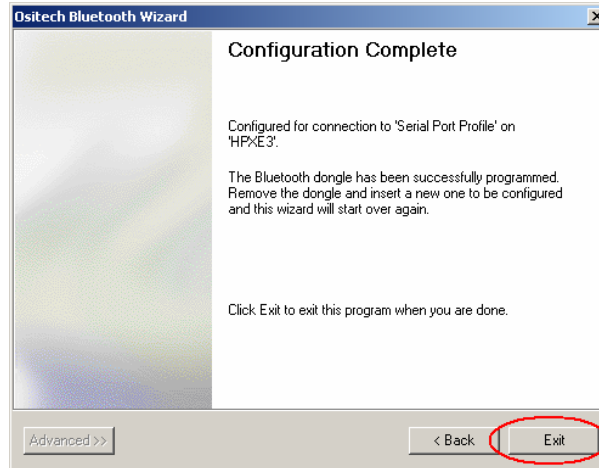
- From the current list of discovered Bluetooth devices, select the device you wish to pair and connect with, and then click the Next button to begin the connection process.



- You will now be prompted to enter the PIN in order to connect to your selected device. Your current PIN should be displayed, however if you wish to use a different PIN, please enter it accordingly now. When you are satisfied with your choice of PIN, click the Next button to continue.



- The remote Bluetooth device should now be requesting entry of its PIN. Be sure to enter the same PIN as was just applied to the Ositech Bluetooth dongle. Complete the pairing process as required from the remote Bluetooth device. When the pairing process with the remote Bluetooth device has completed successfully, the Ositech Bluetooth Wizard will advise you of the successful configuration. If you have more Ositech Bluetooth dongles that need to be programmed and configured, simply swap the programmed dongle with the next dongle that needs to be configured. The Ositech Bluetooth Wizard will automatically return to the first screen once the dongle has been removed. If you're done with programming, click Exit to terminate the Wizard.

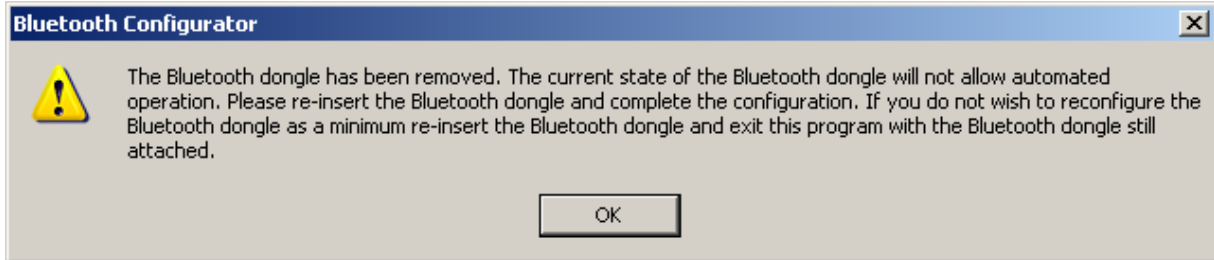


- Congratulations, the Ositech Bluetooth dongle is fully configured and paired to your Bluetooth device, ready for operation. Disconnect the Ositech Bluetooth dongle from the Programming Device, and connect it to your host LP12 / 15 system. You may now proceed to use the Ositech Bluetooth dongle with your host LP12 / 15 system and your selected and paired Bluetooth device. Please see your host LP12 / 15 system's user manual for instructions on how to make remote connections, if needed. Please remember, that when you configure CODESTAT or DT Express on the remote Bluetooth end, that software must be set to use its local incoming Bluetooth COM port. Should you require assistance in determining your incoming Bluetooth COM port for your specific Bluetooth stack, please refer to section 4.2 for details.

Additional Notes:

- In order to simplify connections to your paired device, you should configure the paired Bluetooth device to accept incoming connections automatically, without any further user intervention.
- Whenever you power up your host system with the Ositech Bluetooth dongle configured, it will always attempt to establish a Bluetooth connection with the previously paired Bluetooth device, thus eliminating further user intervention.
- Remember to operate your host system in conjunction with the Baud Rate you have programmed the Ositech Bluetooth dongle with. The Baud Rate programmed on the Ositech Bluetooth dongle and your host system **MUST** match.

4. Should you disconnect the Ositech Bluetooth dongle from the Programming Device without effecting any configurations, a window will open advising you the Ositech Bluetooth dongle has been removed. You are recommended to re-insert the Ositech Bluetooth dongle and complete the configuration, or if you do not wish to reconfigure the Ositech Bluetooth dongle, re-insert the Ositech Bluetooth dongle, and exit the configuration software gracefully, with the Ositech Bluetooth dongle still connected. This is merely a precautionary indicator, and does not indicate any malfunction.



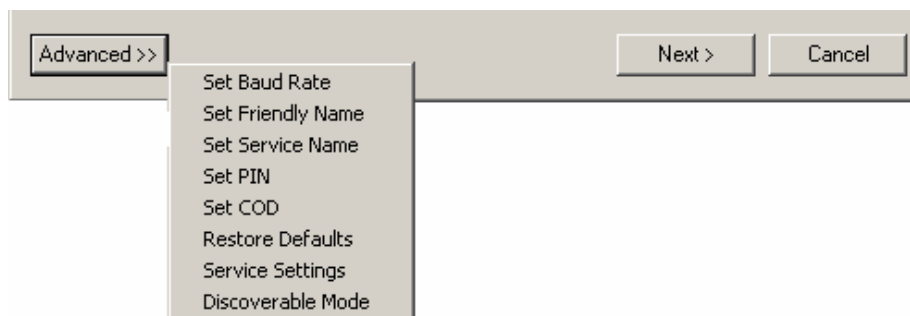
3 ADVANCED OPERATION INSTRUCTIONS

3.1 Advanced Options Overview

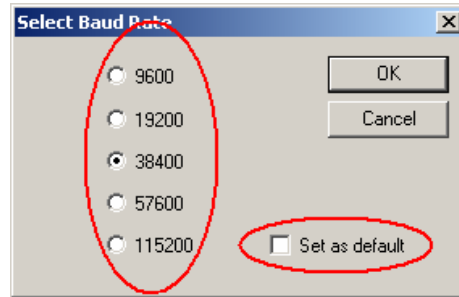
1. In order to enable any of the advanced configuration options for the Ositech Bluetooth Wizard, the Advanced button must be enabled. If the Ositech Bluetooth Wizard is currently running, please exit the Wizard before making any changes to the OsiBT.ini file. On your local hard drive in the \Bluetooth Configuration folder, edit the OsiBT.ini file. Locate the “[Wizard]” section, and look for an entry “Advanced=NO”. To enable the Advanced button, change this entry to “Advanced=YES”, and save the change to OsiBT.ini. Alternatively, if you wish to enable the Advanced button but do not want to edit the ini file directly, you may press CTRL-ALT-A to enable it, however using this method enables the Advanced button for one time operation.
2. Double click the file “Ositech BT Configurator.exe”. This time, you should observe that an Advanced button is now present as part of the Ositech Bluetooth Wizard.



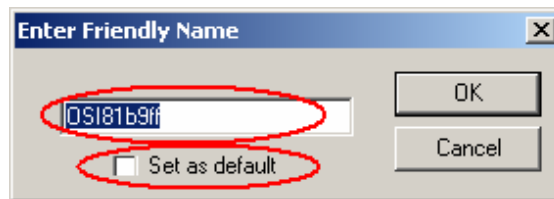
3. Click the Advanced button, and a side menu will appear. This side menu allows you to change either the Baud Rate, Friendly Name, Service Name, PIN, COD, Restore Defaults, Service Settings, or Discover Mode (change from Discoverable to Discover mode).



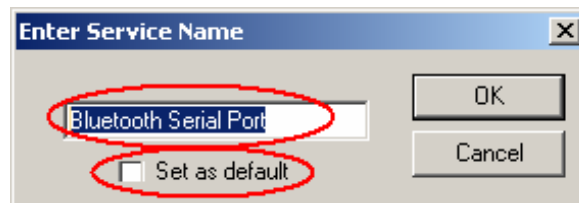
4. If you wish to adjust the Baud Rate of the Ositech Bluetooth dongle, from the side menu of the Advanced button, select Set Baud Rate. The currently programmed baud rate is now displayed, as well as the rest of the supported baud rates of operation. Currently, five Baud Rates are supported, that is, 9600, 19200, 38400, 57600 and 115200. Select the rate you wish to use with the Ositech Bluetooth dongle, and then click the OK button. If you wish to set your selected Baud Rate as the default value for other cables to be programmed, you may select “Set as default”, and this value will be written to the OsiBT.ini file and will be used when the Restore Defaults option is selected in the future.



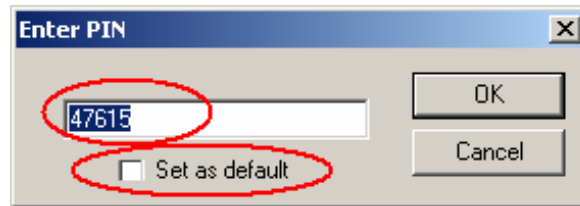
5. If you wish to change the Friendly Name, from the side menu of the Advanced button, select Set Friendly Name. When this opens, the currently assigned friendly name is displayed. Simply enter the Friendly Name of your choice, and then click the OK button. If you wish to set your selected Friendly Name as the default value for other cables to be programmed, you may select “Set as default”, and this value will be written to the OsiBT.ini file and will be used when the Restore Defaults option is selected. This field has a maximum entry of 32 alphanumeric characters. NOTE: If multiple Ositech Bluetooth dongles will be operated within a close proximity, it is recommended to uniquely name each Ositech Bluetooth dongle, or keep their default friendly names, which are unique to each dongle.



6. If you wish to change the Service Name, from the side menu of the Advanced button, select Set Service Name. When this opens, the currently assigned service name is displayed. Simply enter the Service Name of your choice, and then click the OK button. If you wish to set your selected Service Name as the default value for other cables to be programmed, you may select “Set as default”, and this value will be written to the OsiBT.ini file and will be used when the Restore Defaults option is selected. This field has a maximum entry of 32 alphanumeric characters.

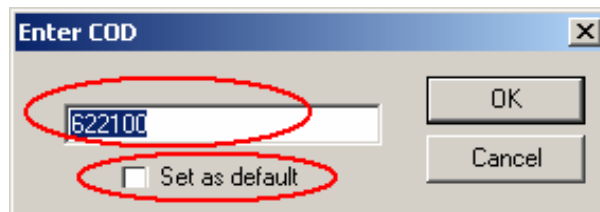


7. If you wish to change the PIN (Personal Identification Number), from the side menu of the Advanced button, select Set PIN. When this opens, the currently assigned PIN is displayed. You may keep the default PIN or simply enter the new PIN of your choice, and then click the OK button. If you wish to set your selected PIN as the default value for other cables to be programmed, you may select “Set as default”, and this value will be written to the OsiBT.ini file and will be used when the Restore Defaults option is selected. The default PIN is the last four digits of your dongle’s Bluetooth address converted to decimal. This field has a maximum entry of 16 numeric digits.

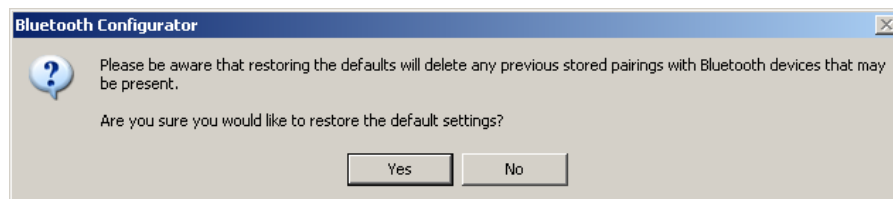


8. If you wish to change the COD (Class Of Device), from the side menu of the Advanced button, select Set COD. When this opens, the currently assigned COD is displayed. Simply enter the new COD of your choice, and then click the OK button. If you wish to set your selected COD as the default value for other cables to be programmed, you may select “Set as default”, and this value will be written to the OsiBT.ini file and will be used when the Restore Defaults option is selected. NOTE: Altering the COD could have unexpected results. Please only change the COD if you are aware of the implications.

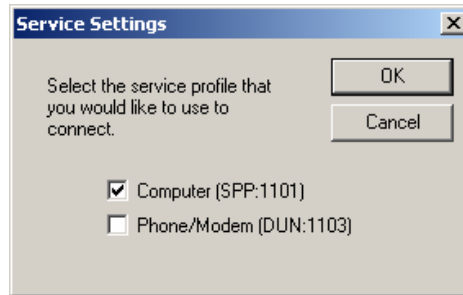
Please refer to the Bluetooth Specifications before changing this value.



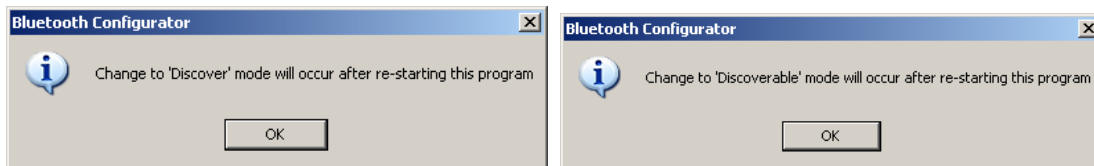
9. Should the need arise that you wish to restore the Ositech Bluetooth dongle to its user defined configuration, from the side menu of the Advanced button, select Restore Defaults. When this option is selected, you will be prompted to confirm that you wish to restore default settings. To proceed to restore the default settings, click Yes to proceed. Should you wish to restore the dongle to its OEM factory defaults, then simply delete the OsiBT.ini file on your hard drive, and reselect Restore Defaults. The default settings that are applied are: Baud Rate of 38400, Friendly Name of “OSIxxxxxx” where xxxxxx is the last six hexadecimal digits of the dongle’s Bluetooth address, Service Name of “Bluetooth Serial Port”, PIN is xxxxx where xxxxx is the last four digits of the Bluetooth dongle’s hexadecimal address converted to decimal, COD is 622100, and Discovery Settings will only check Computer (SPP:1101), unless you have set the options that were changed, using the Set as default option. Any of these default values can be user overridden using the OsiBT.ini file. Please see the Appendix regarding the use of the OsiBT.ini file.



10. If you wish to change the Service Settings, from the side menu of the Advanced button, select Service Settings. When the Service Settings window opens, the default discovery settings are displayed. By default, only Computer (SPP:1101) (Serial Port Profile) is selected.

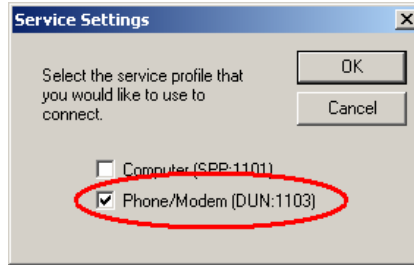


11. If you wish to change between Discover and Discoverable modes, from the side menu of the Advanced button, select Discoverable Mode / Discover Mode (depends on which mode you currently reside in). You will now be prompted as a reminder, to restart this program in order for the change to take effect. Click OK to acknowledge the dialog box, and then exit and restart this application.



3.2 Pairing The Ositech Bluetooth Dongle To A Discovered Phone/Modem

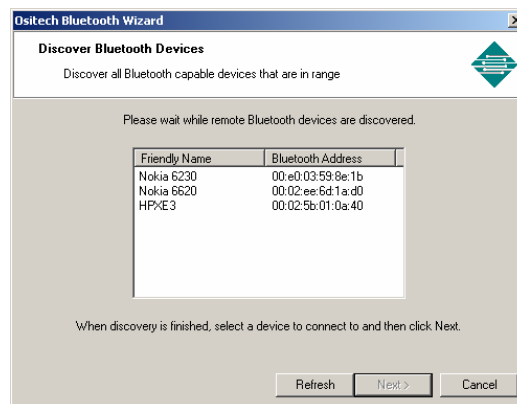
1. If you wish to configure the Ositech Bluetooth dongle for use with a Phone/Modem (DUN:1103 Service Profile), then you firstly need to enable the Advanced button as documented from section 3.1. Once the Advanced button has been enabled, launch the Ositech Bluetooth Wizard. When the Wizard loads, please click the Advanced button, and select Service Settings from the side menu that appears. Once the Service Settings window appears, select Phone/Modem (DUN:1103), and then click OK to apply this change.



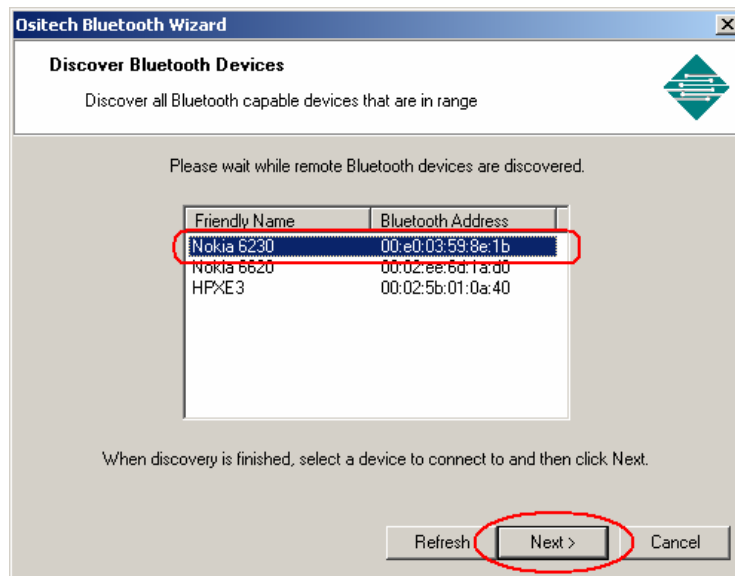
2. You will now be returned to the Ositech Bluetooth Wizard main screen. To begin discovering your remote cellular handsets, click the Next button to proceed. Please ensure that your remote cellular handsets have been enabled as discoverable Bluetooth devices prior to clicking Next.



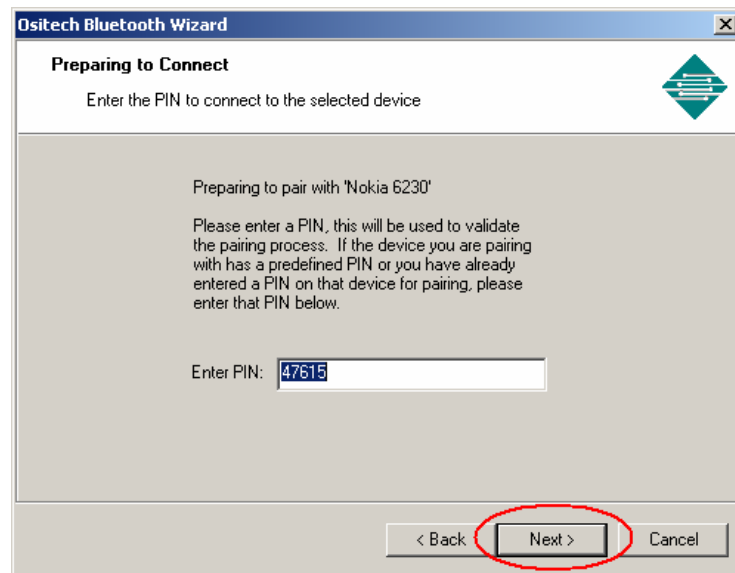
3. The Ositech Bluetooth Wizard will now display a list of all Bluetooth devices that it has discovered in your vicinity. The list of available Bluetooth devices that you will observe will be different, and if, however, you still do not observe your device from the pick list displayed, ensure your remote device is enabled and set to be discovered, and then click the Refresh button to begin discovery once again.



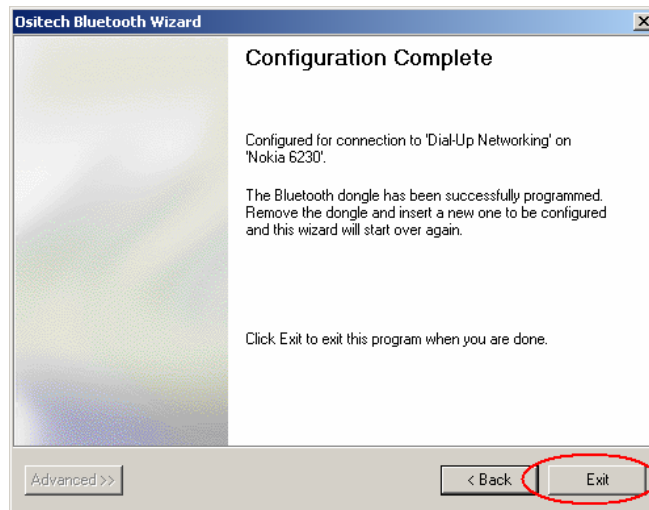
- From the current list of discovered Bluetooth devices, select the device you wish to pair and connect with, and then click the Next button to begin the connection process.



- You will now be prompted to enter the PIN in order to connect to your selected device. Your current PIN should be displayed, however if wish to use a different PIN, please enter it accordingly now. When you are satisfied with your choice of PIN, click the Next button to continue.



- The remote Bluetooth device should now be requesting entry of its PIN. Be sure to enter the same PIN as that you just applied to the Ositech Bluetooth dongle. Complete the pairing process as required from the remote Bluetooth device. When the pairing process with the remote Bluetooth device has completed successfully, the Ositech Bluetooth Wizard will advise you of the successful configuration. If you have more Ositech Bluetooth dongles that need to be programmed and configured, simply swap the programmed dongle with the next dongle that needs to be configured. The Ositech Bluetooth Wizard will automatically return to the first screen once the dongle has been removed.. If you're done with programming, click Exit to terminate the Wizard.

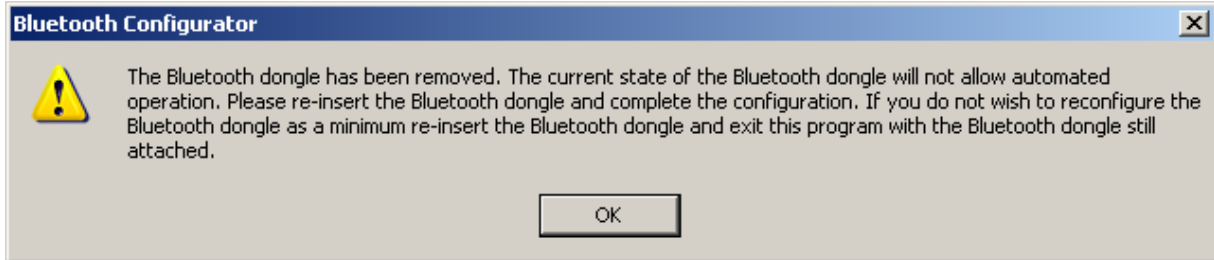


- Congratulations, the Ositech Bluetooth dongle is fully configured and paired to your Bluetooth device, ready for operation. Disconnect the Ositech Bluetooth dongle from the Programming Device, and connect it to your host system. You may now proceed to use the Ositech Bluetooth dongle with your host system and your selected and paired Bluetooth device. Please see your host system's user manual for instructions on how to make remote connections, if needed.

Additional Notes:

- In order to simplify connections to your paired device, you should configure the paired Bluetooth device to accept incoming connections automatically, without any further user intervention.
- Whenever you power up your host system with the Ositech Bluetooth dongle configured, it will always attempt to establish a Bluetooth connection with the previously paired Bluetooth device, thus eliminating further user intervention.
- Remember to operate your host system in conjunction with the Baud Rate you have programmed the Ositech Bluetooth dongle with. The Baud Rate programmed on the Ositech Bluetooth dongle and your host system **MUST** match.

4. Should you disconnect the Ositech Bluetooth dongle from the Programming Device without effecting any configurations, a window will open advising you the Ositech Bluetooth dongle has been removed. You are recommended to re-insert the Ositech Bluetooth dongle and complete the configuration, or if you do not wish to reconfigure the Ositech Bluetooth dongle, re-insert the Ositech Bluetooth dongle, and exit the configuration software gracefully, with the Ositech Bluetooth dongle still connected. This is merely a precautionary indicator, and does not indicate any malfunction.

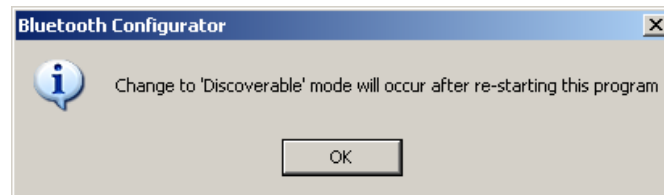


3.3 Discovering / Pairing The Ositech Bluetooth Dongle From A Computer

1. In order for the Ositech Bluetooth dongle to be discovered from other available Bluetooth computer devices, it must be placed into this mode of operation (Discoverable mode). Firstly, you need to enable the advanced button as documented from section 3.1. Once the Advanced button has been enabled, launch the Ositech Bluetooth Wizard. When the Wizard loads, please click the Advanced button, and select Service Settings from the side menu that appears. Once the Service Settings window appears, select Computer (SPP:1101), and click OK to apply this change.



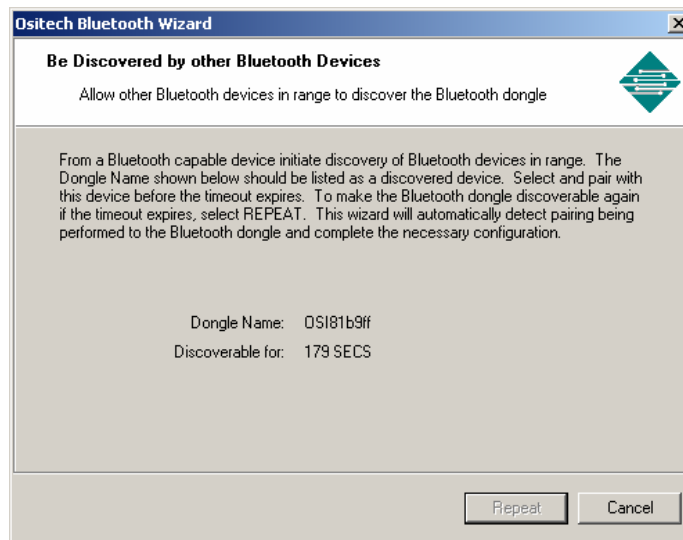
2. Click the Advanced button once again, and from the side menu that appears, select Discoverable Mode. You will now observe a dialog popup advising you that the change to Discoverable mode will occur after re-starting the program. Click OK to this dialog box, and then gracefully exit the Wizard. Once the Wizard has shut down, relaunch the application and it will begin in Discoverable mode.



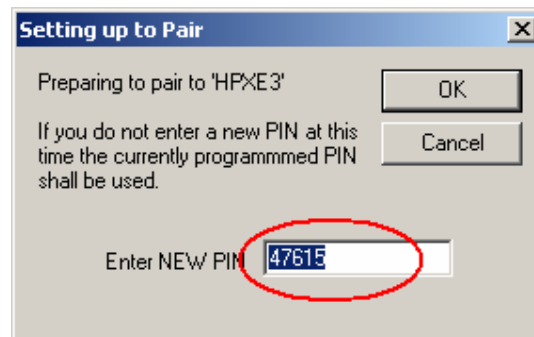
3. Once the Wizard loads, click Next to proceed.



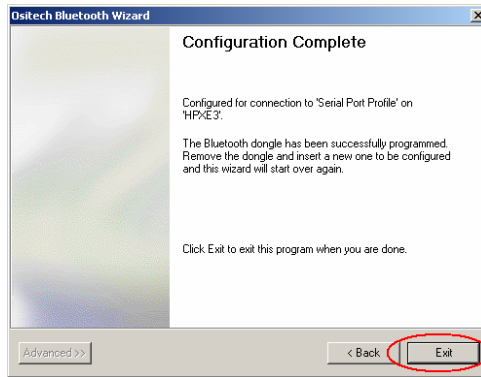
- The Wizard will now make the Ositech Bluetooth dongle discoverable to other remote Bluetooth computer devices.



- At this point, enable your remote Bluetooth computer to discover devices in range. On your remote computer system, examine the list of discovered devices, and locate the Ositech Bluetooth dongle. Select the Ositech Bluetooth dongle and initiate a pairing/connection to the Ositech Bluetooth dongle. On the remote computer system, enter your PIN accordingly.
- The Ositech Bluetooth Wizard should now prompt you with a dialog box, such that you can enter your PIN for the Ositech Bluetooth dongle. Make sure you enter the same PIN as that which you entered on the remote computer system.



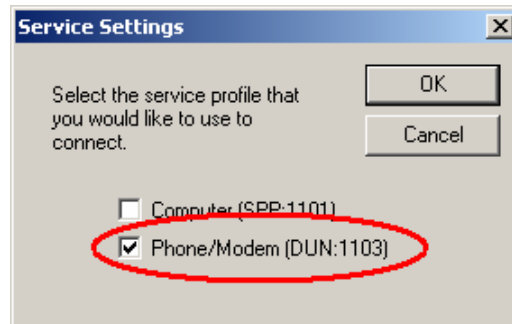
- Once the configuration software has advised you that Configuration is complete, you may exit the programming software, or simply unplug the Ositech Bluetooth dongle if more Ositech Bluetooth dongles need to be configured as well.



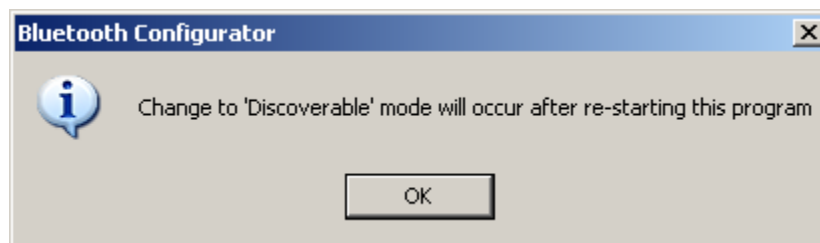
8. Congratulations, the Ositech Bluetooth dongle is fully configured and paired to your Bluetooth computer system, ready for operation. Disconnect the Ositech Bluetooth dongle from the Programming Device, and connect it to your host system. You may now proceed to use the Ositech Bluetooth dongle with your host system and your selected and paired Bluetooth device. Please see your host system's user manual for instructions on how to make remote connections, if needed.

3.4 Discovering / Pairing The Ositech Bluetooth Dongle From A Phone/Modem

1. In order for the Ositech Bluetooth dongle to be discovered from other available Bluetooth cellular handset/modem devices, it must be placed into this mode of operation (Discoverable mode). Firstly, you need to enable the Advanced button as documented from section 3.1. Once the Advanced button has been enabled, launch the Ositech Bluetooth Wizard. When the Wizard loads, please click the Advanced button, and select Service Settings from the side menu that appears. Once the Service Settings window appears, select Phone/Modem (DUN:1103), and click OK to apply this change.



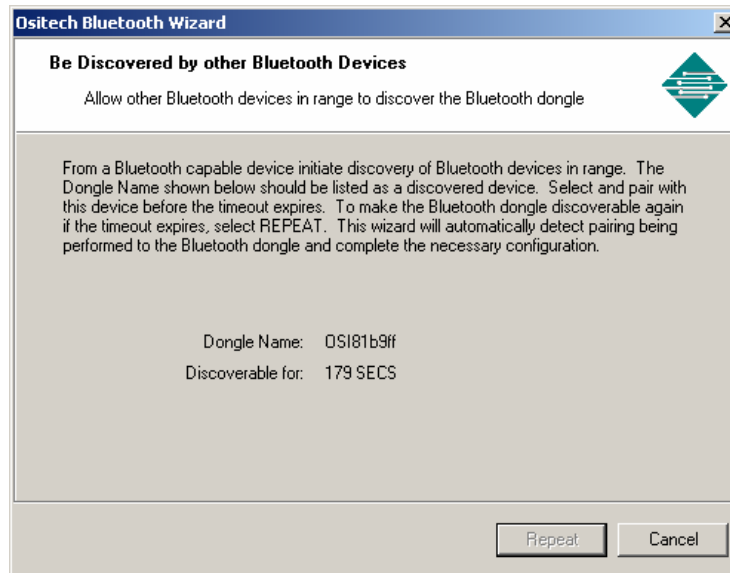
2. Click the Advanced button once again, and from the side menu that appears, select Discoverable Mode. You will now observe a dialog popup advising you that the change to Discoverable mode will occur after re-starting the program. Click OK to this dialog box, and then gracefully exit the Wizard. Once the Wizard has shut down, relaunch the application and it will begin in Discoverable mode.



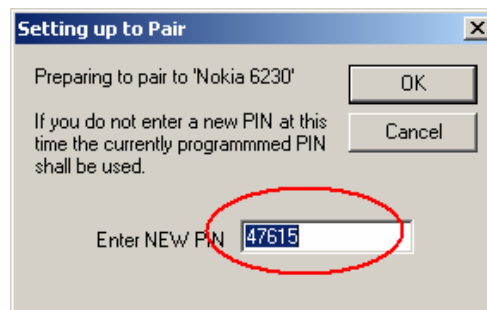
3. Once the Wizard loads, click Next to proceed.



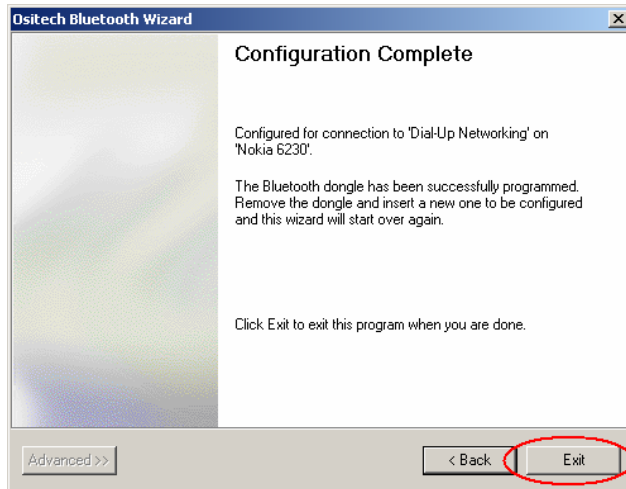
- The Wizard will now make the Ositech Bluetooth dongle discoverable to other remote Bluetooth cellular handset/modem devices.



- At this point, enable your remote Bluetooth cellular handset/modem to discover devices in range. On your remote cellular handset/modem, examine the list of discovered devices, and find the Ositech Bluetooth dongle. Select the Ositech Bluetooth dongle and initiate a pairing/connection to the Ositech Bluetooth dongle. On the remote cellular handset/modem, enter your PIN accordingly.
- The Ositech Bluetooth Wizard should now prompt you with a dialog box, such that you can enter your PIN for the Ositech Bluetooth dongle. Make sure you enter the same PIN as that which you entered on the remote cellular handset/modem.



- Once the configuration software has advised you that Configuration is complete, you may exit the programming software, or simply unplug the Ositech Bluetooth dongle if more Ositech Bluetooth dongles need to be configured as well.



8. Congratulations, the Ositech Bluetooth dongle is fully configured and paired to your Bluetooth cellular handset, ready for operation. Disconnect the Ositech Bluetooth dongle from the Programming Device, and connect it to your host system. You may now proceed to use the Ositech Bluetooth dongle with your host system and your selected and paired Bluetooth device. Please see your host system's user manual for instructions on how to make remote connections, if needed.

4 APPENDIX

4.1 OsiBT.ini Usage

When the configuration software is launched, it will create an OsiBT.ini file. This file can be used for a variety of reasons. Below, is an extract of the ini file created, with its default settings.

```
[Versions]
INIVer=1
AppVer=Ositech Bluetooth Configurator V6.0.0.29
```

```
[Defaults]
BaudRate=38400
ServiceName=Bluetooth Serial Port
COD=622100
Mode=DISCOVER
1101=YES
1103=YES
NumberOfDevices=0
```

```
[Overrides]
WaitToPair=180
WaitAfterPair=20
WaitForSilence=10
WaitToConnect=60
MaxDiscoverTime=120
```

```
[Discovery]
1101=YES
1103=YES
NumberOfDevices=0
```

```
[Wizard]
Mode=ON
CCID1=1101
AutocallInterval=5000
Advanced=NO
```

```
[Versions]
AppVer=Ositech Bluetooth Configurator V6.0.0.29 – This entry is only used by the configuration software for version checking. Users should not change this data.
```

[Defaults] – This section can be used to program multiple Ositech Bluetooth dongles with the same settings, without requiring user data input for each cable. Changes made to this section will then become the new defaults. Should you wish to revert to the OEM factory defaults, then simply delete the OsiBT.ini file and reselect Restore Defaults.

1. Baud Rate – Can be 9600, 19200, 38400, 57600 or 115200 only.
2. Service Name – Can be any 32 alphanumeric characters maximum.
3. COD – Must be 8 bytes, ranging from 0 thru F hex.
4. Mode – Can be either DISCOVER or DISCOVERABLE only.
5. 1101 – Can be either YES or NO only
6. 1103 – Can be either YES or NO only
7. NumberOfDevices – Can be any numeric value from 0 to 20

[Overrides] – This section can be used to override certain wait times, should you find them to be insufficient. Any numeric values entered correspond to time in seconds.

1. WaitToPair – Can be any numeric value from 1 to 600 (time in seconds).
2. WaitAfterPair – Can be any numeric value from 1 to 600 (time in seconds).
3. WaitForSilence – Can be any numeric value from 1 to 600 (time in seconds).

Title: Bluetooth Dongle Operational Instructions	Revision: H
Document # : 48x414-PHYSIO-CONTROL-002	Page 26 of 31

4. WaitToConnect – Can be any numeric value from 1 to 600 (time in seconds).
5. MaxDiscoverTime – Can be any numeric value from 1 to 600 (time in seconds).

[Discovery] – This section lists the currently selected options, and is not used to override these values.

1. 1101 – Can be either YES or NO only.
2. 1103 – Can be either YES or NO only.
3. NumberOfDevices – Can be any numeric value from 0 to 20.

[Wizard]

1. Mode – Can be either ON or OFF only.
2. CCID1 – Can be either 1101 or 1103 only.
3. AutocallInterval – Can be any numeric value (time in milliseconds).
4. Advanced – Can be either YES or NO

4.2 Physio-Control Software Configuration

This information will assist users with the configuration of their Physio-Control software, such as, CODE-STAT Suite or LIFENET DT Express. Further, this information will assist you in determining which incoming Bluetooth Com Port to select for use with your Physio-Control software.

You should determine the incoming Bluetooth Com Port before you pair with the Ositech Bluetooth dongle, in order to minimize confusion between possible Com Ports.

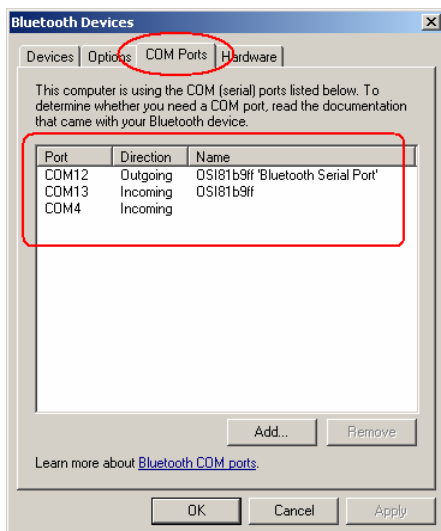
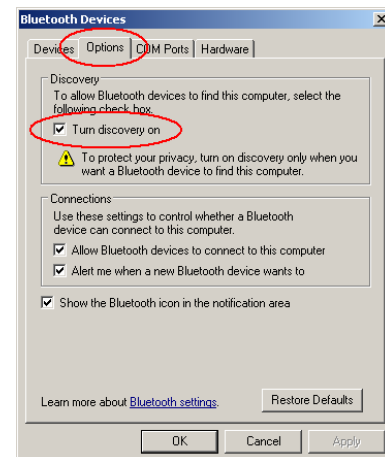
Since there are a variety of remote Bluetooth stacks available, Microsoft XP Service Pack 2 / Vista, Toshiba, BlueSoleil, and Widcomm will be illustrated.

Prior to commencing, please verify your remote Bluetooth device is properly installed and functioning.

4.2.1 Microsoft Windows XP SP2 and Vista Bluetooth Stack

All of the settings for the Microsoft Windows XP SP2 / Vista Bluetooth stack are viewable from within its associated Control Panel applet. Open your Control Panel and locate the “Bluetooth Devices” icon, and double click it.

If you desire to make the Microsoft XP SP2 / Vista Bluetooth stack device discoverable, then you need to enable this feature. From within the Bluetooth Devices applet, click to the Options tab. On the Options tab, ensure that the “Turn discovery on” feature is checked, and if not, check this option and click Apply. This device can now be discovered by the Ositech Bluetooth dongle.



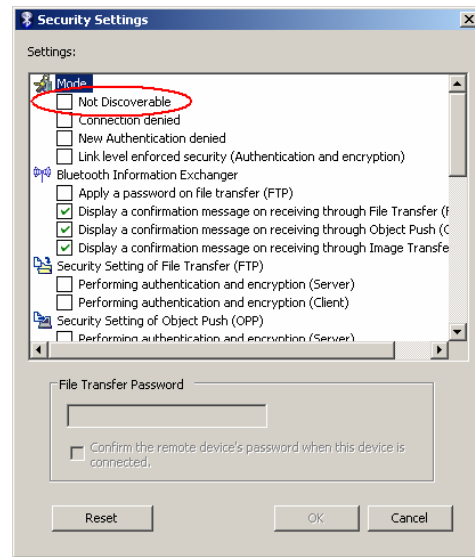
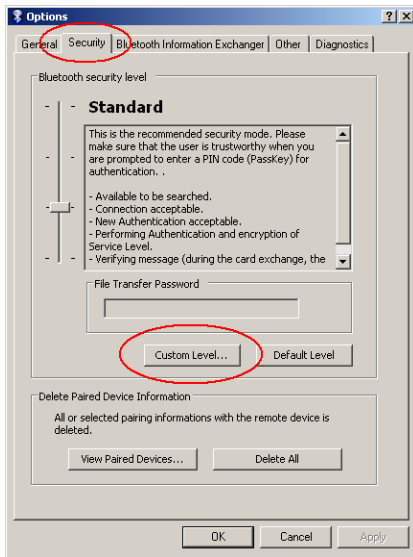
In order to determine your incoming Bluetooth Com Port, from the Bluetooth Devices applet in the Control Panel, click to the COM Ports tab. You should now observe a list of Bluetooth COM Ports.

Examine the incoming ports only. From your list of incoming ports, determine the generic incoming COM Port. The generic incoming COM Port will be the only incoming COM Port that does not have a name attached to it. In the example on the left, COM4 would indicate the generic incoming COM Port since it does not have an associated Name attached to it. Make a note of your generic incoming COM Port, when you configure your Physio-Control software, please add this port to its device usage list, as this is the port to which to enable for use within the Physio-Control software.

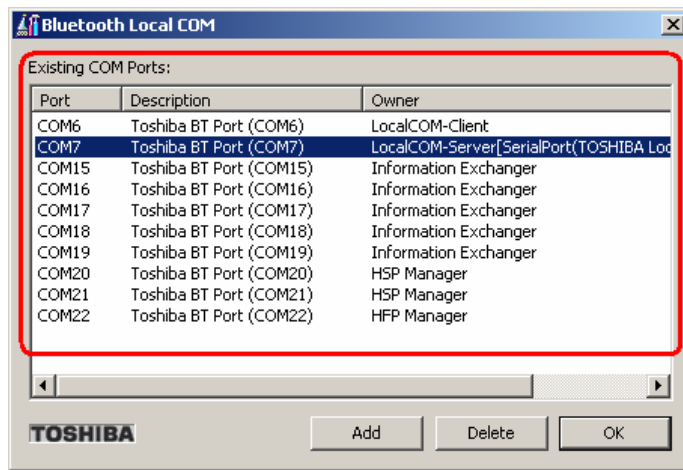
4.2.2 Toshiba Bluetooth Stack

This information will assist those users who have the Toshiba Bluetooth stack installed and configured for use with their remote Bluetooth device. Further, this information will assist you in determining which incoming Bluetooth Com Port to select for use with Physio-Control software.

If you desire to make your Toshiba Bluetooth stack device discoverable, you need to verify this mode is active. Open your Toshiba Bluetooth stack Options menu, and click to the Security Tab. On the Security Tab, click the “Custom Level...” button. Examine the Mode Settings, and specifically, the “Not Discoverable” option must **NOT** be checked. If this option is checked, please deselect this option. By default, this option is not checked. Your Toshiba Bluetooth stack device will now be discoverable to the Ositech Bluetooth dongle.



In order to determine your incoming Bluetooth Com Port, double click the Bluetooth Local COM applet in the Control Panel. You should now observe a list of Existing Bluetooth COM Ports.

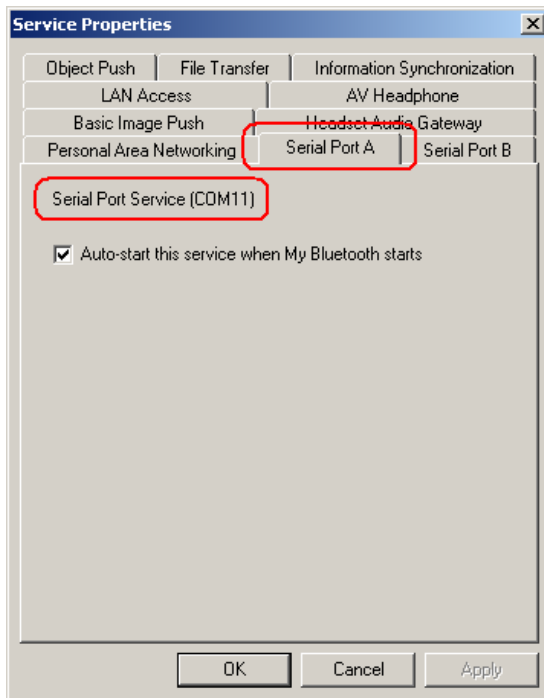
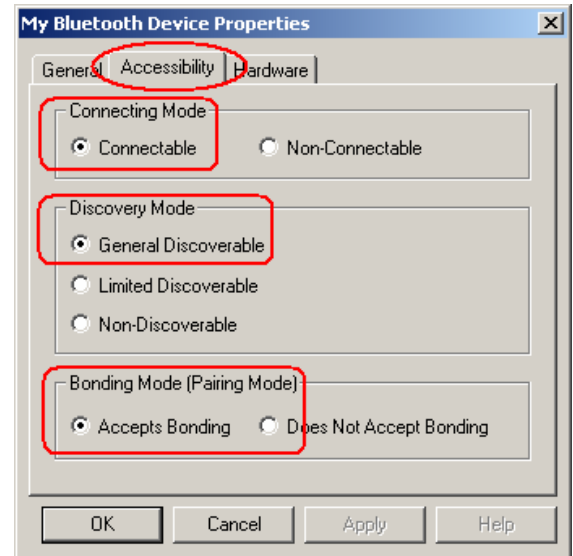


Examine the existing COM Ports, and from your list, determine the generic incoming COM Port. The generic incoming port will have an Owner titled as “LocalCOM-Server.....”. In the example on the left, COM7 would indicate the generic incoming COM Port since it has an Owner entry that is titled as “LocalCOM-Server.....”. Make a note of your generic incoming COM Port, and when you configure your Physio-Control software, please add this port to its device usage list, as this is the port to which to enable for use within the Physio-Control software.

4.2.3 BlueSoleil Bluetooth Stack

This information will assist those users who have the BlueSoleil Bluetooth stack installed and configured for use with their remote Bluetooth device. Further, this information will assist you in determining which incoming Bluetooth Com Port to select for use with Physio-Control software.

If you desire to make your BlueSoleil Bluetooth stack device discoverable, you need to verify this mode is active. Open your BlueSoleil – Main Window, and click “My Bluetooth”. From the “My Bluetooth” drop down list, select “Device Properties...” and then click to the Accessibility tab. On the Accessibility tab, verify the three options as displayed on the right are bulleted. Your BlueSoleil Bluetooth stack device will now be discoverable to the Ositech Bluetooth dongle.



In order to determine your incoming Bluetooth Com Port, open your BlueSoleil – Main Window, and click “My Services”. From the “My Services” drop down list, select “Properties...” and then click to the “Serial Port A” tab. You should now observe the properties of Serial Port A.

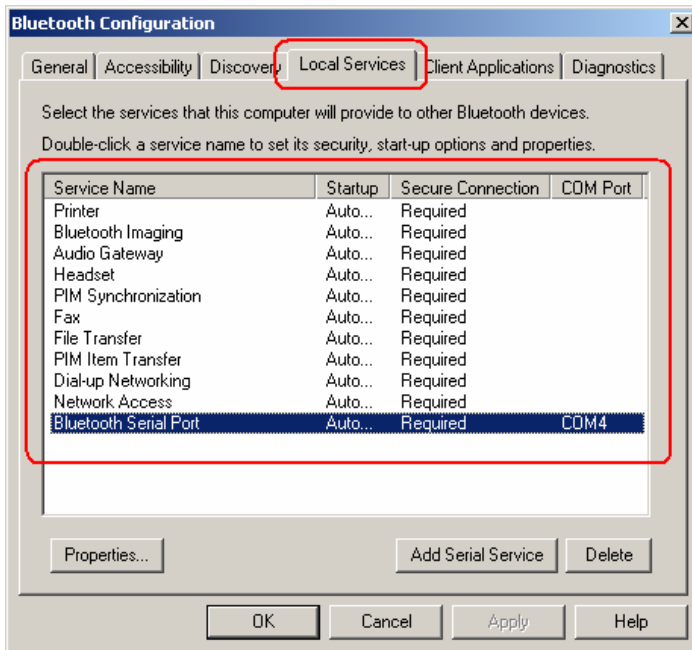
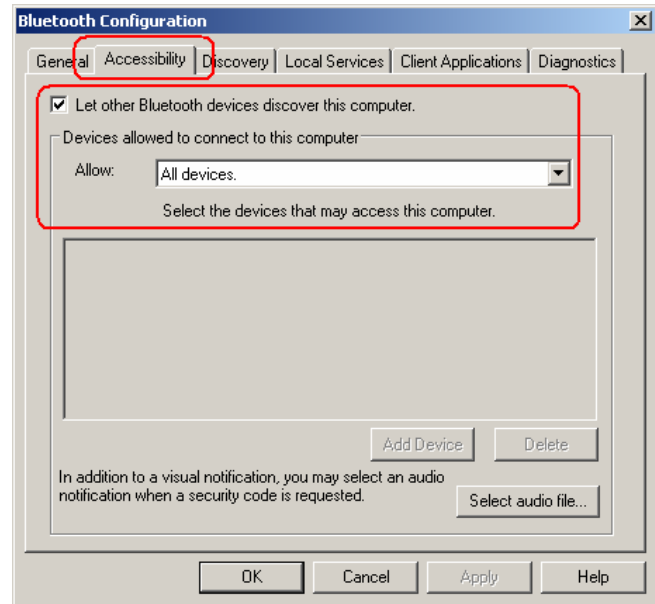
Examine the Serial Port Service entry on this tab, and determine the generic incoming COM Port. In the example on the left, Serial Port Service (COM11) would indicate the generic incoming COM Port. Make a note of your generic incoming COM Port, and when you configure your Physio-Control software, please add this port to its device usage list, as this is the port to which to enable for use within the Physio-Control software.

If there is a possibility that Serial Port A has a Bluetooth connection to another device, the Ositech Bluetooth dongle may adhere itself to Serial Port B’s COM Port.

4.2.4 Widcomm Bluetooth Stack

This information will assist those users who have the Widcomm Bluetooth stack installed and configured for use with their remote Bluetooth device. Further, this information will assist you in determining which incoming Bluetooth Com Port to select for use with Physio-Control software.

If you desire to make your Widcomm Bluetooth stack device discoverable, verify this mode is active. Open your Widcomm Bluetooth Configuration, and click to the Accessibility Tab. On the Accessibility Tab, examine the check box for “Let other Bluetooth devices discover this computer”, specifically, this option must be checked. If this option is NOT checked, please check this option, and click Apply. Your Widcomm Bluetooth stack device will now be discoverable to the Ositech Bluetooth dongle.



In order to determine your incoming Bluetooth Com Port, open your Widcomm Bluetooth Configuration, and click to the “Local Services” Tab. On the Local Services Tab, examine the list of Service Names that is displayed.

Observe the Service Name that is titled Bluetooth Serial Port. Its Service Name entry’s COM Port value as this is your generic incoming COM Port. In the example on the left, the Bluetooth Serial Port Service Name has COM4 associated with it, indicating the generic incoming COM Port. Make a note of your generic incoming COM Port, and when you configure your Physio-Control software, please add this port to its device usage list, as this is the port to which to enable for use within the Physio-Control software.