



Product Guide

For Topaz Bluetooth Signature Pads

Copyright © 2019 Topaz Systems Inc. All rights reserved.

For Topaz Systems, Inc. trademarks and patents, visit www.topazsystems.com/legal.

Table of Contents

Step 1: Pairing Instructions	3
Windows 7 Pairing	3
Windows 10 Pairing.....	7
Step 2: Installation Instructions	10
Step 3: Test Signature Pad Functionality	12
Step 4 (Optional): Sleep Timer Set-Up	13
Bluetooth Pad Information	14
Usage & Charging	14
Battery Length.....	14
Battery Replacement.....	14
Advanced Configuration and Set-Up Instructions	14

Step 1: Pairing Instructions

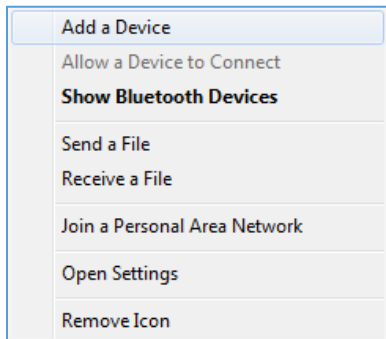
Windows 7 Pairing

Below are the instructions to pair your Topaz Bluetooth signature pad with a Windows 7 computer.

1. **Be sure that your PC has an integrated Bluetooth adapter.** If not, we recommend purchasing a Bluetooth USB adapter for your PC. Follow the instructions provided with the Bluetooth USB adapter to set it up for use with your computer and install the adapter's software.
2. Turn on the signature pad using the switch above the pen stylus holder; the LED will turn green.
3. Click on the "Bluetooth Devices" icon (similar to the icon below) in the system tray, found in the lower right corner of the Windows toolbar.

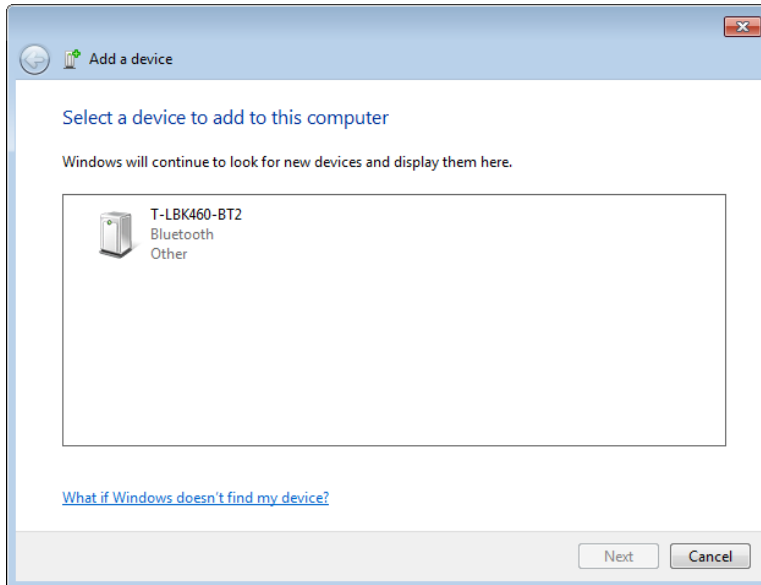


4. Select "Add a Device" from the list.

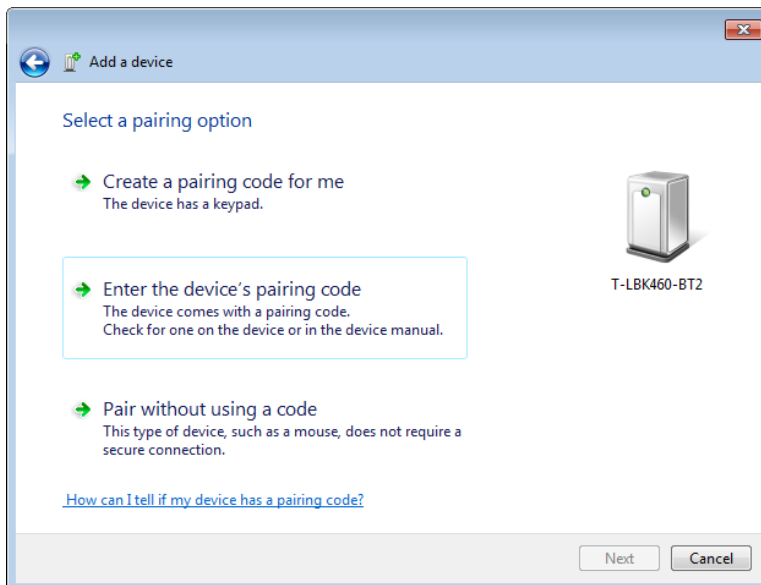


5. This will open the “Add a device” menu. Select your Topaz signature pad model from the list, and click “Next”.

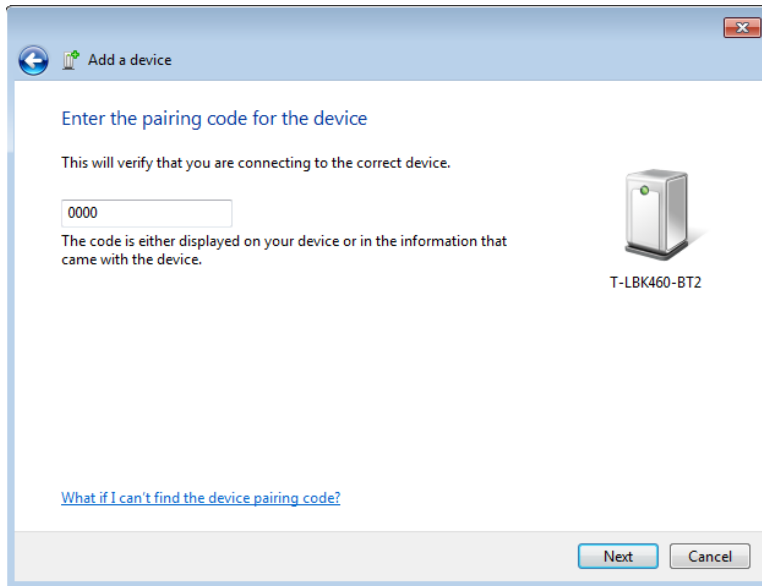
Note: In our example, the Topaz signature pad model is “T-LBK460-BT2”. Topaz model names start with “A-BTB1”, “T-S”, “T-LBK”, or “Topaz”. Wait for devices listed as “Unknown” to update with model names.



6. On the next screen, select the option that says “Enter the device’s pairing code”.

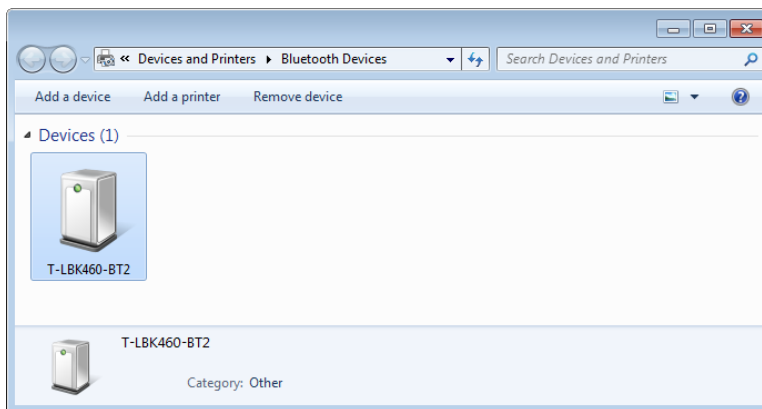


- On the next screen, enter “0000” as the Bluetooth pairing code, and click “Next”. The Topaz signature pad will be configured.

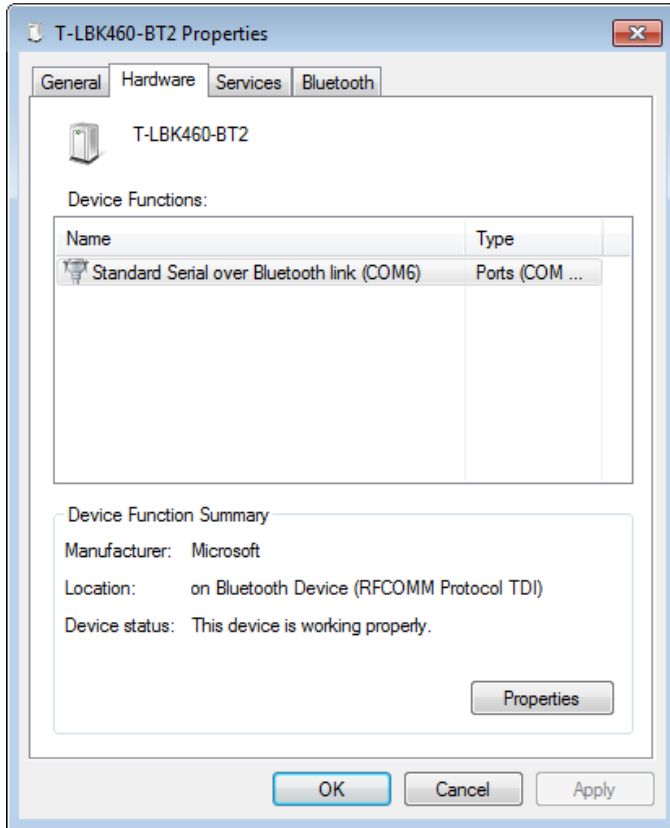


- Your Bluetooth signature pad is now paired.
- Next, we will check to see which COM port your signature pad is using. Click on the “Bluetooth Devices” icon in the Windows system tray, found in the lower-right corner of the Windows toolbar (same icon as in step 3 above).

Double click on the signature pad device (in our example, it is “T-LBK460-BT2”).



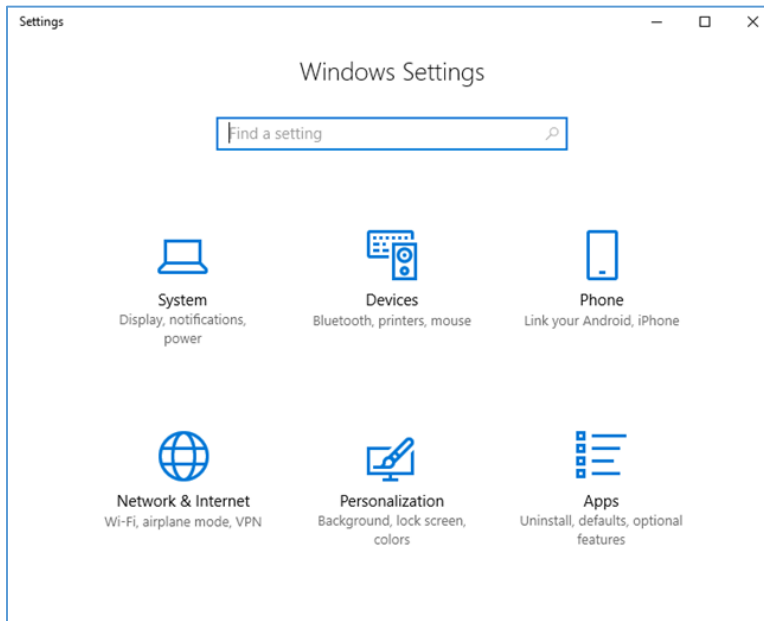
10. This will open the signature pad “Properties” menu. Click on the “Hardware” tab, and the COM port will be listed under “Device Functions”. In our example, this is “COM6”. Note this COM port number for use during the [“Installation Instructions”](#) section. Go to this section now.



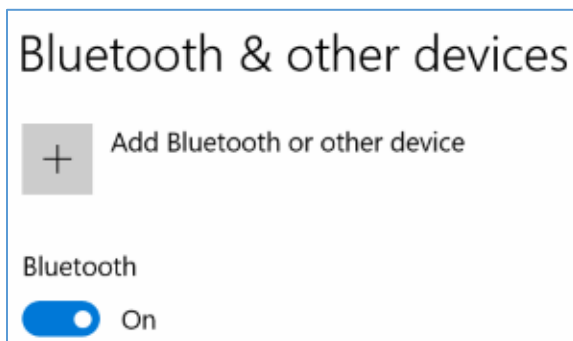
Windows 10 Pairing

Below are the instructions to pair your Topaz Bluetooth signature pad with a Windows 10 computer.

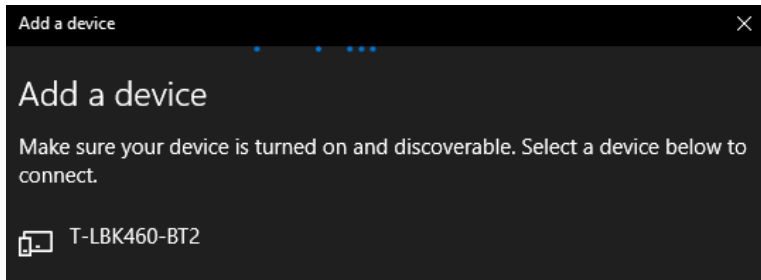
1. **Be sure that you have Bluetooth support on your PC.** If you do not, we recommend purchasing a Bluetooth USB adapter for your PC. Follow the instructions provided with the Bluetooth USB adapter to set it up for use with your computer and install the adapter's software.
2. Turn on the signature pad using the switch above the pen stylus holder.
3. Click the "Start" icon in the bottom left corner of your taskbar, then click the "Settings" icon. In the "Windows Settings" window, click "Devices: Bluetooth, printers, mouse".



4. Make sure Bluetooth is turned on. Then, click the "Add Bluetooth or other device" button.

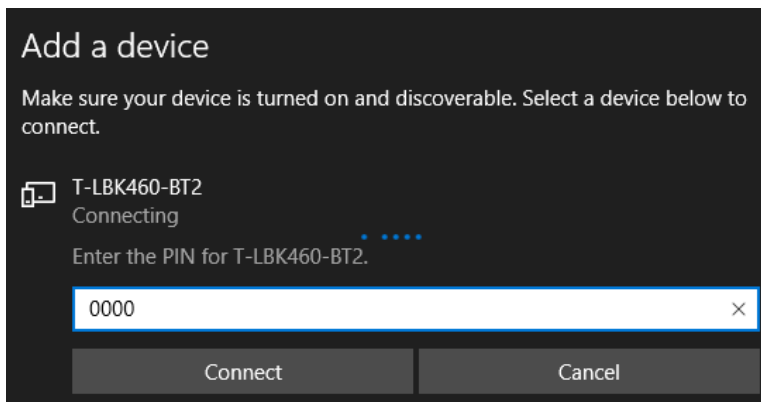


- In the window that appears, select “Bluetooth”. Select your Topaz signature pad model from the list, and click “Next”.

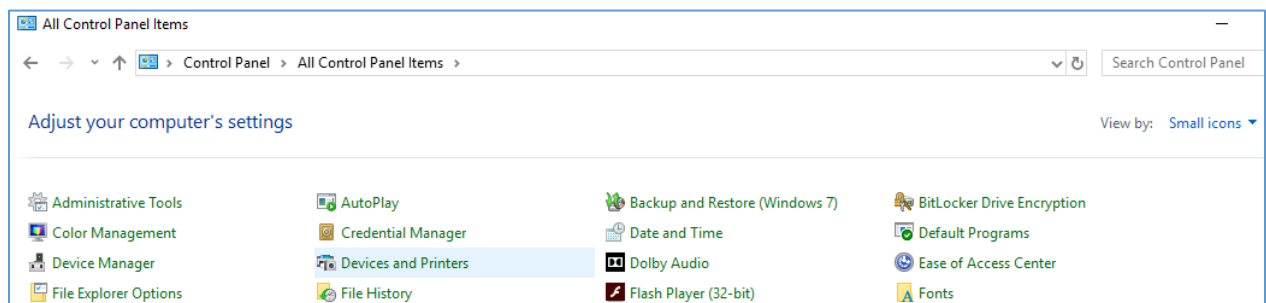


Note: In our example, the Topaz signature pad model is “T-LBK460-BT2”. Topaz model names start with “A-BTB1”, “T-S”, “T-LBK”, or “Topaz”. Wait for devices listed as “Unknown” to update with model names.

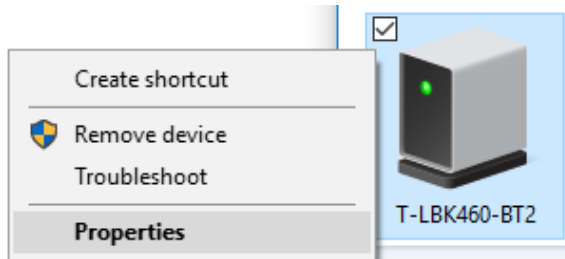
- When asked for the device’s PIN, enter 0000, and click “Connect”.



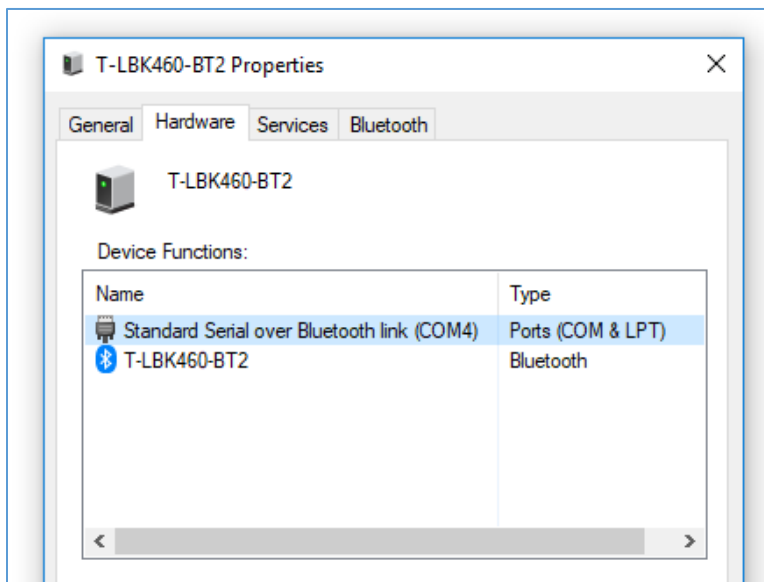
- The Topaz signature pad will be configured, and your Bluetooth signature pad is now paired. Click “Done” to exit out.
- Next, we will check to see which COM port your signature pad is using. Open up the “Control Panel”, and select “View by: Small Icons”. Then, click “Devices and Printers”.



- Right-click on the Bluetooth signature pad device, and select “Properties”. In our example, it is “T-LBK460-BT2”.



- This will open the signature pad “Properties” menu. Click on the “Hardware” tab, and the COM port will be listed under “Device Functions”. In our example, this is “COM4”. Note this COM port number for use during the [“Installation Instructions”](#) section. Go to this section now.



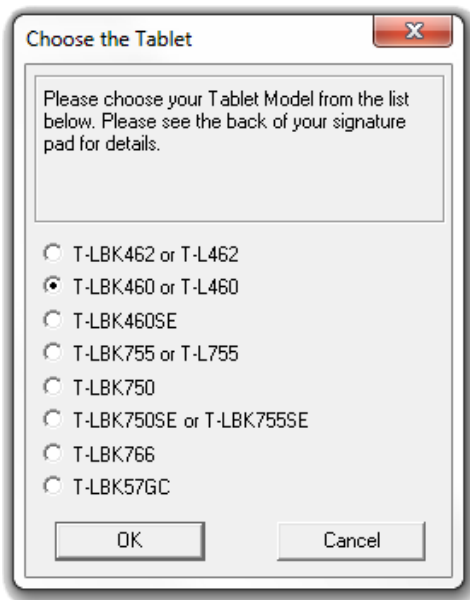
Step 2: Installation Instructions

Below are software installation instructions for your Topaz Bluetooth signature pad.

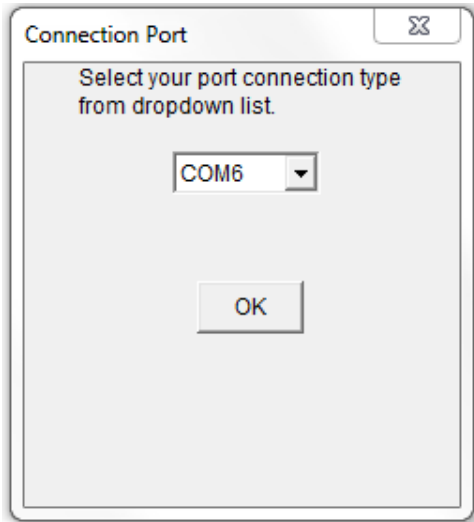
1. Download SigPlus by selecting your signature model from the list at: www.sigpluspro.com.
2. Read and click-through the “Welcome”, “Read Me File”, and “Destination Location” menus. Select the prefix of your signature pad model number, found on the back of your pad. In our example, the pad model number is “T-LBK460-BT2-R”, so we select “T-L” from the installation list.



3. On the following menu, select the tablet model listed on the back of your pad. In our example, the pad model number is “T-LBK460-BT2-R”, so we select “T-LBK460 or T-L460” from the installation list.



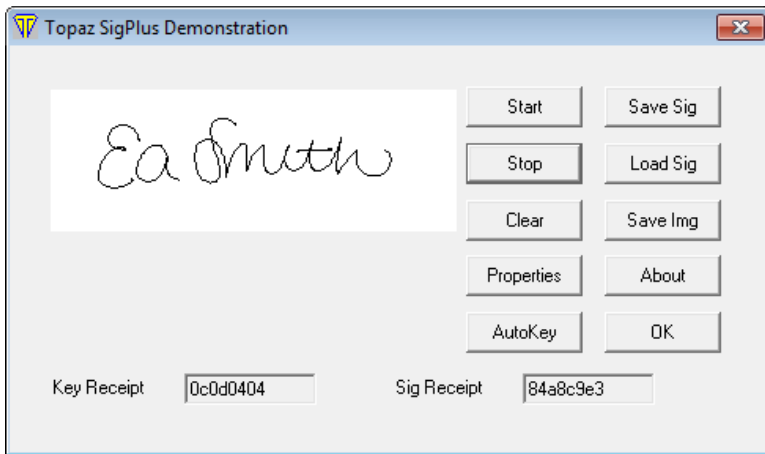
4. On the following menu, select the “COM Port” that was assigned to your Bluetooth signature pad during the pairing process.



5. Continue with the SigPlus installation, and your Bluetooth signature pad is now ready for use.

Step 3: Test Signature Pad Functionality

Use the Topaz “DemoOCX Test Utility” to test signature capture from the Topaz signature pad, included in the SigPlus download, found in the “Installation Instructions” section above. If you did not choose to install DemoOCX on the desktop, it can be found at the following location:
C:\Windows\SigPlus\DemoOCX.exe.



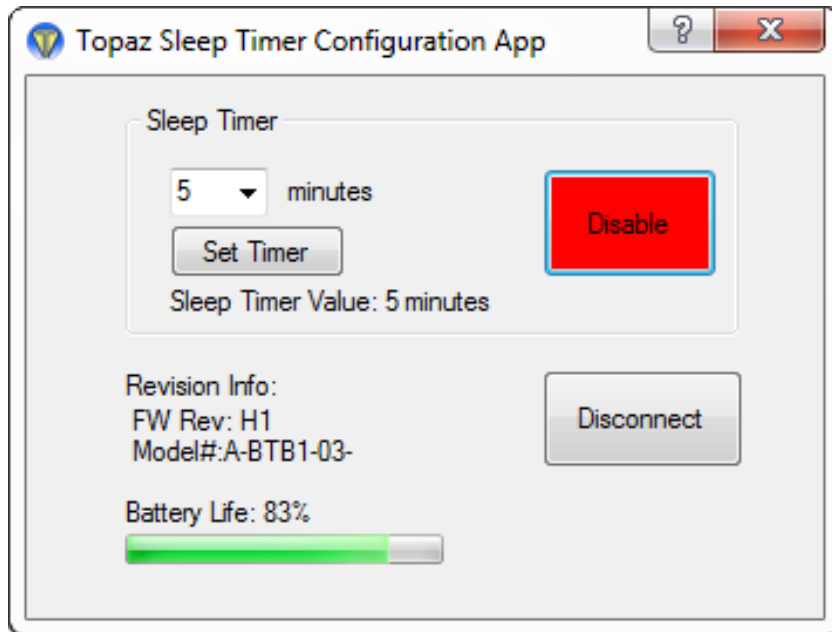
For more information on using the Topaz “DemoOCX”, see the how-to PDF guide at:
www.topazsystems.com/software/download/demooctxhowto.pdf.

Step 4 (Optional): Sleep Timer Set-Up

To conserve battery, select Bluetooth signature pad models have a sleep timer that by default is set to automatically shut off the pad after 5 minutes of use unless an application is connected. If you wish to modify the sleep timer settings of your pad, you can do so via the Sleep Timer App located at:

C:\Program Files (x86)\Topaz Systems\Tools\SleepTimer\TopazSleepTimer.exe.

Select your desired number of minutes until shut off, and be sure the pad is connected to the app and the app is enabled. The app will appear as the below screenshot:



Note: If your pad shuts off during programming, simply repeat the process.

Bluetooth Pad Information

Usage & Charging

When charging your Bluetooth pad, a red light will appear on top of the unit. When the pad is fully charged, the red light will turn off.

LED	STATUS	CONDITION
Red	ON	Charging
Red	OFF	Full Battery

A full battery charge (0% to 100%) takes approximately **3 hours and 30 minutes**. The charger shuts off when the battery is full, so there is no risk of overcharging, and there is no harm in leaving the unit plugged in for extended periods after the charging completes. Store your Bluetooth signature pad at room temperature (approximately 70 degrees F) in a dry location. Excessive heat can damage the batteries or cause them to lose charge faster.

Battery Length

Note: The provided Topaz charger allows the wireless pad to be charged twice as fast as a typical USB port.

For the Topaz Bluetooth signature pads, see the following battery length times. These times are from a full charge to low battery indication, with the unit always ON and the wireless module connected.

MODEL NUMBER	MODEL NAME	BATTERY LENGTH
T-S460-BT2-R	SigLite® 1x5 BT	Approximately 24 hours
T-LBK460-BT2-R	SigLite LCD 1x5 BT	Approximately 8 hours
T-LBK750SE-BTB1-R	SigLite LCD 4x3 BT	Approximately 16 hours
T-LBK755SE-BTB1-R	SignatureGem® LCD 4x3 BT	Approximately 12 hours
T-LBK766SE-BTB1-R	SignatureGem LCD 4x5 BT	Approximately 8 hours
T-LBK57GC-BTB1-R	SigGem® Color 5.7 BT	Approximately 7 hours

Battery Replacement

Using an incorrect battery type can cause pad failure. Please contact Topaz Tech Support at techsupport@topazsystems.com for assistance regarding battery replacement.

Advanced Configuration and Set-Up Instructions

For assistance with advanced configuration for Topaz wireless pads (Bluetooth and WiFi), see the “Shared PC and Wireless Pad Environment Guide” at the following link: www.topazsystems.com/products/Wireless_AdvancedGuide.pdf.