

BNC 75 Ohm

RF-Connectors



DAMAR & HAGEN

	Page
Company Profile.....	3
Product Description	4
Technical Data	5
Design Options.....	6
Connectors	
Cable Plug.....	8
Adaptor.....	12
U-Link.....	14
Terminator Plug.....	15
Cable Socket.....	18
Panel Cable Socket.....	20
Panel Socket	26
Panel Socket with Insulating base for printed circuits.....	31
Adaptor.....	36
Bulkhead Adaptor.....	37
T-Adaptor	36
Adapter	43
Cable Assemblies	47

	Page
Accessories & Spare Parts	53
Tool	64
Cables (by meter)	74
Assembly Instruction	88
Cable Table Coaxial Cable (sorted by cable type)	109
Cable Table Coaxial Cable (sorted by cable-Ø)	111
List of Part Numbers	113

Damar & Hagen Stecksysteme GmbH
Dieselstrasse 11
91301 Forchheim
Germany

Phone
Fax
E-Mail
Internet

+49 (0) 91 91 / 9 75 89-0
+49 (0) 91 91 / 9 75 89-60
info@damar-hagen.de
www.damar-hagen.de

Business hours: Monday till Thursday
Friday

7.30 a.m. to 12.00 p.m. and 12.30 to 16.30 p.m.
7.30 a.m. to 12.00 p.m.



Damar & Hagen

over 90 years of quality – made in Germany



Damar & Hagen was founded in 1922 by Georg Damar und Georg Hagen.

As the company had clear vision and a specific direction right from the start, we can rely on a wealth of experience, quality production and know how. Damar & Hagen is also certified according to DIN EN ISO 9001:2008.

Owing to continued market orientation, a targeted expansion of the product range, as well as ongoing investment in state-of-the-art tools and machines together with the use of a broad range of test and measuring methods, Damar & Hagen are able to present a comprehensive range of products used by satisfied customers the world over.

Our high-quality plug connectors and other products are often the result of close collaboration with our customers. Regardless of how individual the applications of our customers are – with our expertise and experience spanning decades, we pursue just one goal:

To provide a customer-specific solution with an excellent price/performance ratio!

We shall keep this innovative direction in the future. Quality, individuality and flexibility are applied goals our company strives after for our business partners.

Performance that connects.



DAMAR & HAGEN

The **RF-coaxial connector BNC 75 Ohm** for flexible coaxial transmission line from 3 up to 11 mm external diameter used for installations and equipment by the telecommunication and measurement engineering with a frequency range up to 4 GHz.

It is a small, light and moisture-proof coaxial connector with bayonet catch and pin-socket-principle. This connectors are produced for the two mating compatible series 50 Ohm or 75 Ohm¹. There are both designs with crimp connection or a combined solder- and clamp connection for the cable assembly available.

¹Notice the increase of the reflection coefficient at higher frequencies.



Electrical Characteristics (at 20 °C and 65 % rel. humidity)

Surge Impedance	75 Ω
Frequency range	0 up to 4 GHz
Return loss (plug-socket inserted)	≥ 18 dB
Contact resistor (plug-socket inserted)	
Inner conductor	≤ 3 mΩ
Outer conductor	≤ 1 mΩ
Insulation resistance	≥ 5 GΩ

Test voltage U_{eff}

Connectors for cable diameter	≤ 4 mm 1000 V
Connectors for cable diameter	≥ 5 mm 1500 V

Operating voltage U_{eff}

Connectors for cable diameter	≤ 4 mm 400V
Connectors for cable diameter	≥ 5 mm 500V

Operating Temperature range - 65 °C up to +165 °C

Mechanical Characteristics

Durability (mating cycles)	≥ 1000
RoHS	compliant

Construction

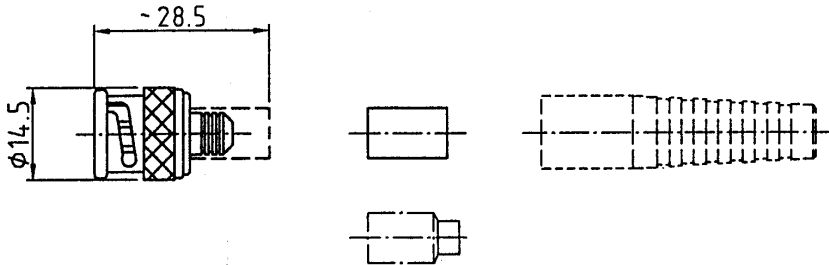
Inner conductor	Brass/Beryllium copper, hard gold-plated
Dielectric	PTFE
Outer conductor	Brass corrosion resistant finish
Suspension parts	Stainless steel
Bracket parts	Brass/Copper wit corrosion resistant finish
Gasket	Silicon
Strain Relief Sleeve	Polyurethane (PUR)

The specified data serve only to describe the product and should not be considered legally binding, guaranteed properties.
Depending on the application, design, type of cable and assembly method the specified values may differ.
We reserve the right to make constructional changes, determine delivery and are not responsible for any errors and omissions.

- Surface..... special surfaces according to customers requirement,
for the layer structure and also for the layer thicknesses
- Cable connections halogen-free cables,
two braids cable,
multi-wire cable,
unusual cable diameter,
additional clamping of the cable sheath,
Assembly by our company,
also possible for special cables
- Dimensions all dimensions, distances, nuts, tread length
mounting holes, insulation bases etc.
are variable according to customers requirement
- Electrically variable..... special resistors, circuits, contacts are possible
According to customers requirement
- Insulating parts, gaskets and contacts other colours and materials are possible
(e. g. Beryllium bronze for outer conductor contact)

Connectors

BNC 75 Ohm



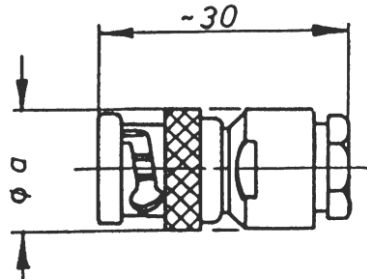
Crimp connection

Accessories (extra order): Strain Relief Sleeves

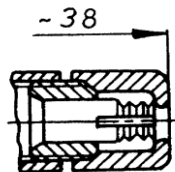
Twist Sleeves for cable-Ø 5 mm

Cable-nominal-Ø	Cable Group*	Reference Cable*	Part Number	Assembly Instruction	
3	1	RG-174	1-1183-2100	7	
	2	RG-179B	1-1184-2100		
4	3	RG-122	1-1185-2100		
	4	RG-195	1-1186-2100		
	45	1865A <i>Belden</i>	1-3688-2100		
5	19	---	1-1189-2100		
	42	0.6/2.8AF <i>Draka</i>	1-5126-2100		
6	8	RG-62	1-1191-2100		15
	23	0.6/3.7 <i>Draka</i> ; RG-59	1-1190-2100		
	50	0.8/3.7AF <i>Draka</i>	1-2457-2100		
7	11	0.8/4.9D	1-1193-2100		7
	38	0.6L/3.7D/7	1-2434-2100		
	51	1.0/4.8AF <i>Draka</i>	1-3943-2100		
8	12	RG-6A	1-1194-2100		
9	13	1.0/6.6	1-1195-2100		
	52	1.4/6.6AF <i>Draka</i>	1-4064-2100		
11	28	RG-11A	1-2242-2100		
	29	RG-13A	1-2243-2100		
	36	1.0/6.6D/10	1-2503-2100		
	60	1.6/7.3 AF <i>Draka</i>	1-4699-2100		

* see *Cable Table Coaxial Cable*



a = 14.5 mm at Cable nominal-Ø 3 to 9 mm
 a = 16.5 mm at Cable nominal-Ø 11 mm



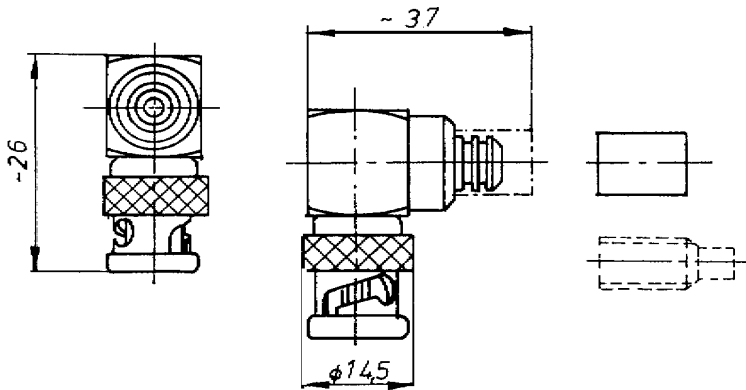
with additional clamping of
 the cable sheath on request



Inner conductor - Solder connection
 Outer conductor - Clamp connection

Cable-nominal-Ø	Cable Group*	Reference Cable*	Part Number	Assembly Instruction
3	1, 2	RG-174; RG-179B	1-1177-2100	12
4	3, 4	RG-122; RG-195	1-1178-2100	
5	5, 64	---	1-1179-2100	1
	19, 42	0.6/2.8AF <i>Draka</i>	1-1192-2100	
6	8	RG-62	1-1180-2100	9
	23	0.6/3.7 <i>Draka</i> ; RG-59	1-1187-2100	
	50	0.8/3.7AF <i>Draka</i>	1-1196-2100	
7	11, 51	0.8/4.9D; 1.0/4.8AF <i>Draka</i>	1-1181-2100	1
9	12, 13	1.0/6.6; RG-6A	1-1182-2100	
		52	1.4/6.6AF <i>Draka</i>	1-4063-2100
11	28	RG-11A	1-2240-2100	2
	29	RG-13A	1-2241-2100	
	36	1.0/6.6D/10	1-2630-2100	

* see Cable Table Coaxial Cable

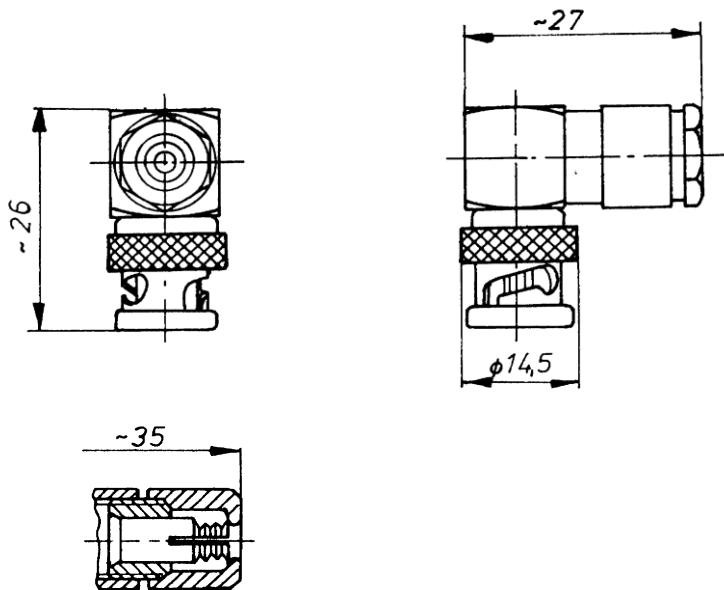


Crimp connection

Accessories (extra order): Strain Relief Sleeves

Cable-nominal-Ø	Cable Group*	Reference Cable*	Part Number	Assembly Instruction
3	1	RG-174	1-1203-2101	7
	2	RG-179B	1-1204-2101	
4	3	RG-122	1-1205-2101	
	4	RG-195	1-1206-2101	
5	19	---	1-1209-2101	15
	42	0.6/2.8AF <i>Draka</i>	1-5127-2101	
6	8	RG-62	1-1211-2101	7
	23	0.6/3.7 <i>Draka</i> ; RG-59	1-1210-2101	
	50	0.8/3.7AF <i>Draka</i>	1-4084-2101	
7	11	0.8/4.9D	1-1213-2101	7
	51	1.0/4.8AF <i>Draka</i>	1-3945-2101	
8	12	RG-6A	1-1214-2101	7
9	13	1.0/6.6	1-1215-2101	
	52	1.4/6.6AF <i>Draka</i>	1-4066-2101	
11	28	RG-11A	1-2246-2101	7
	29	RG-13A	1-2247-2101	
	36	1.0/6.6D/10	1-3539-2101	

* see Cable Table Coaxial Cable

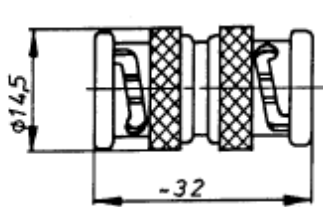


with additional clamping of
the cable sheath on request

Inner conductor - Solder connection
Outer conductor - Clamp connection

Cable-nominal-Ø	Cable Group*	Reference Cable*	Part Number	Assembly Instruction
3	1, 2	RG-174; RG-179B	1-1197-2101	14
4	3, 4	RG-122; RG-195	1-1198-2101	
5	5, 64	---	1-1199-2101	3
	19, 42	0.6/2.8AF <i>Draka</i>	1-1212-2101	
6	8	RG-62	1-1200-2101	11
	23	0.6/3.7 <i>Draka</i> ; RG-59	1-1207-2101	
	50	0.8/3.7AF <i>Draka</i>	1-1216-2101	
7	11, 51	0.8/4.9D; 1.0/4.8AF <i>Draka</i>	1-1201-2101	3
9	12, 13	1.0/6.6; RG-6A	1-1202-2101	
	52	1.4/6.6AF <i>Draka</i>	1-4065-2101	
11	28	RG-11A	1-2244-2101	4
	29	RG-13A	1-2245-2101	

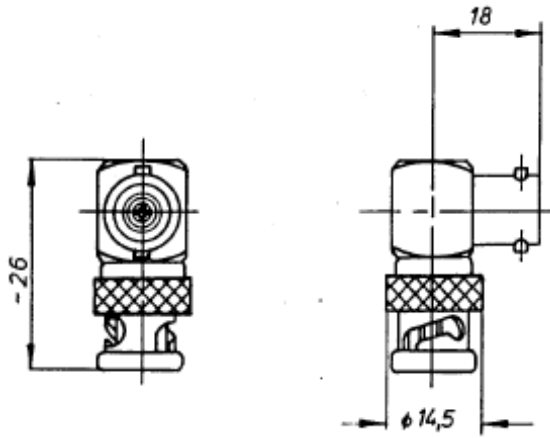
* see *Cable Table Coaxial Cable*



Part Number

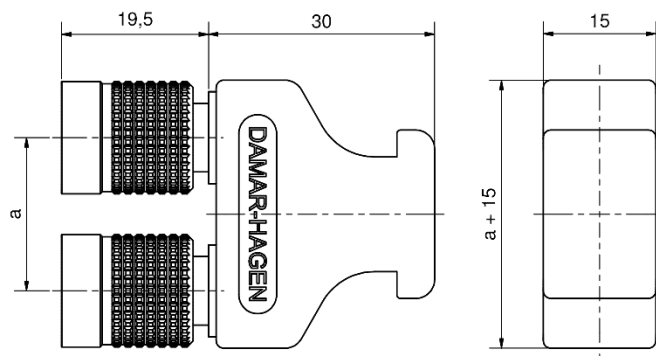
1-1219-2110

DAMAR & HAGEN



Part Number

1-3055-2131



Available only in the Premium version BNCpro

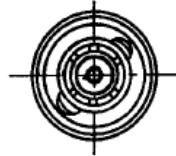
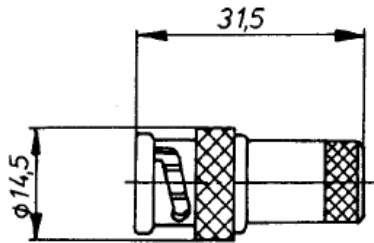
Mateable with all commercially available BNC Sockets

Colour*	Part Number plug distance 'a'			
	19	20	25.4	35
yellow	-	1-8523-13112	-	-
orange	-	1-8524-13112	-	-
red	-	1-8525-13112	-	-
violet	-	1-8526-13112	-	-
blue	-	1-8527-13112	-	-
green	-	1-8528-13112	-	-
grey	-	1-8529-13112	-	-
brown	-	1-8530-13112	-	-
white	-	1-8531-13112	-	-
black	1-8521-13112	1-8532-13112	1-8534-13112	1-8536-13112
turquoise (cyan)	1-8522-13112	1-8533-13112	1-8535-13112	1-8537-13112

* Colour Illustrations only used for orientation – Colour differences not excluded.

Terminator Plug

BNC 75 Ohm

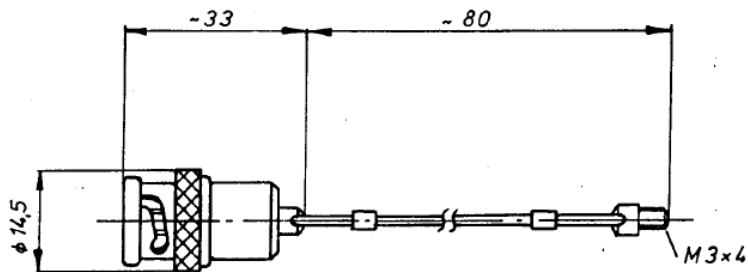


Part Number	Description
1-2627-2120	with resistor: $75 \Omega \pm 0.1 \% \frac{1}{3} W$
1-1218-2120	with resistor: $75 \Omega \pm 1 \% \frac{1}{3} W$
1-3262-2120	with resistor: $93 \Omega \pm 1 \% \frac{1}{3} W$
1-3257-2120	with resistor: $120 \Omega \pm 1 \% \frac{1}{3} W$
1-1217-2120	without resistor: for mounting a resistor (max. dimension $\varnothing 4$; 12 lg.)

DAMAR & HAGEN

Terminator Plug

BNC 75 Ohm

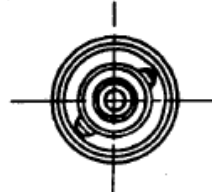
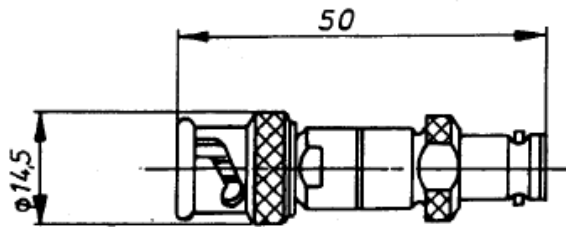


Part Number	Description
1-2696-2120	with resistor: $75 \Omega \pm 1 \% \frac{1}{3} W$
1-2624-2120	with resistor: $75 \Omega \pm 0.1 \% \frac{1}{3} W$

DAMAR & HAGEN

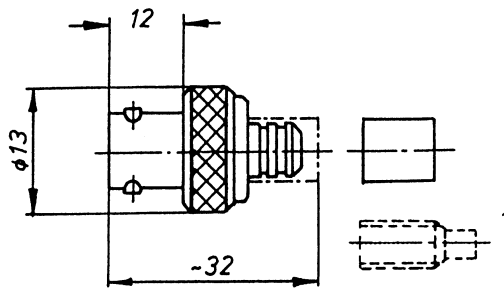
Terminator Plug

BNC 75 Ohm



Part Number	Description
1-2691-2120	with resistor: $75 \Omega \pm 1 \% \frac{1}{3} W$

DAMAR & HAGEN

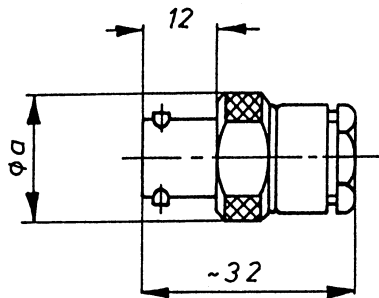


Crimp connection

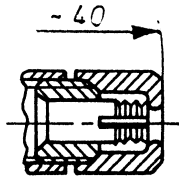
Accessories (extra order): Strain Relief Sleeves

Cable-nominal-Ø	Cable Group*	Reference Cable*	Part Number	Assembly Instruction
3	1	RG-174	1-1226-2140	7
	2	RG-179B	1-1227-2140	
4	3	RG-122	1-1228-2140	
	4	RG-195	1-1229-2140	
5	19	---	1-1232-2140	
	42	0.6/2.8AF <i>Draka</i>	1-5128-2140	
	61	0.75L/3.2/4.5 <i>Leoni</i>	1-8368-2140	
6	8	RG-62	1-1234-2140	15
	23	0.6/3.7 <i>Draka</i> ; RG-59	1-1233-2140	7
	50	0.8/3.7AF <i>Draka</i>	1-4070-2140	
7	11	0.8/4.9D	1-1236-2140	
	51	1.0/4.8AF <i>Draka</i>	1-4069-2140	
8	12	RG-6A	1-1237-2140	
9	13	1.0/6.6	1-1238-2140	
	52	1.4/6.6AF <i>Draka</i>	1-4068-2140	
11	28	RG-11A	1-2250-2140	
	29	RG-13A	1-2251-2140	
	36	1.0/6.6D/10	1-2667-2140	

* see *Cable Table Coaxial Cable*



a = 13.0 mm at Cable nominal-Ø 3 to 7 mm
 a = 14.5 mm at Cable nominal-Ø 9 mm
 a = 16.5 mm at Cable nominal-Ø 11 mm



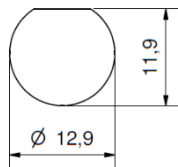
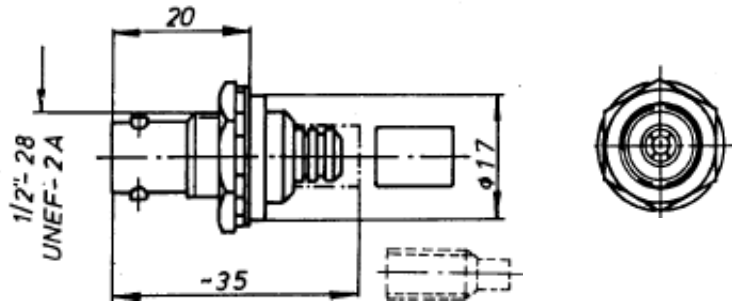
with additional clamping of
 the cable sheath on request



Inner conductor - Solder connection
 Outer conductor - Clamp connection

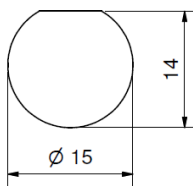
Cable-nominal-Ø	Cable Group*	Reference Cable*	Part Number	Assembly Instruction
3	1, 2	RG-174; RG-179B	1-1220-2140	12
4	3, 4	RG-122; RG-195	1-1221-2140	
5	5, 64	---	1-1222-2140	1
	19, 42	0.6/2.8AF <i>Draka</i>	1-1235-2140	
6	8	RG-62	1-1223-2140	9
	23	0.6/3.7 <i>Draka</i>	1-1230-2140	
	50	0.8/3.7AF <i>Draka</i>	1-1239-2140	
7	11, 51	0.8/4.9D; 1.0/4.8AF <i>Draka</i>	1-1224-2140	1
9	12, 13	1.0/6.6; RG-6A	1-1225-2140	2
	52	1.4/6.6AF <i>Draka</i>	1-4067-2140	
11	28	RG-11A	1-2248-2140	
	29	RG-13A	1-2249-2140	
	36	1.0/6.6D/10	1-3540-2140	

* see *Cable Table Coaxial Cable*



Mounting hole without Insulation Washer

Mounting panel ≤ 5 mm
without serrated washer ≤ 6 mm



Mounting hole with Insulation Washer

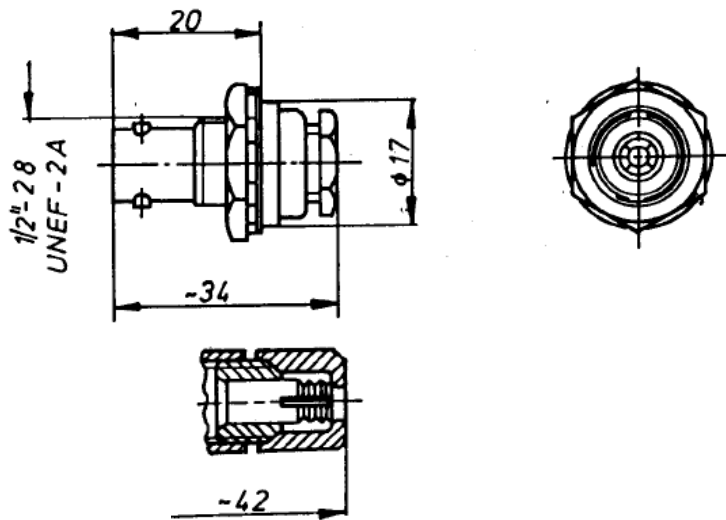
Mounting panel ≤ 3 mm
without serrated washer ≤ 4 mm

Crimp connection

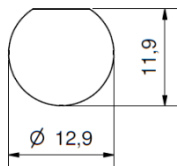
Accessories (extra order): Insulation Washer Part-No. 2-1887-9200 (black) and other colours

Cable-nominal-Ø	Cable Group *	Reference Cable*	Part Number	Assembly Instruction
3	1	RG-174	1-1252-2142	8
	2	RG-179B	1-1253-2142	
4	3	RG-122	1-1254-2142	
	4	RG-195	1-1255-2142	
5	19	---	1-1258-2142	8
	42	0.6/2.8AF <i>Draka</i>	1-5129-2142	
6	8	RG-62	1-1261-2142	16
	23	0.6/3.7 <i>Draka</i>	1-1259-2142	
	50	0.8/3.7AF <i>Draka</i>	1-4073-2142	
7	11	0.8/4.9D	1-1262-2142	8
	51	1.0/4.8AF <i>Draka</i>	1-3944-2142	
8	12	RG-6A	1-1263-2142	
9	13	1.0/6.6	1-1264-2142	
	52	1.4/6.6AF <i>Draka</i>	1-4072-2142	
11	28	RG-11A	1-2254-2142	
	29	RG-13A	1-2255-2142	

* see *Cable Table Coaxial Cable*

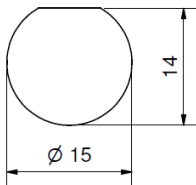


with additional clamping of the cable sheath on request



Mounting hole without Insulation Washer

Mounting panel ≤ 5 mm
without serrated washer ≤ 6 mm



Mounting hole with Insulation Washer

Mounting panel ≤ 3 mm
without serrated washer ≤ 4 mm

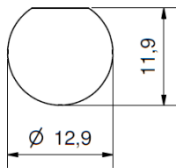
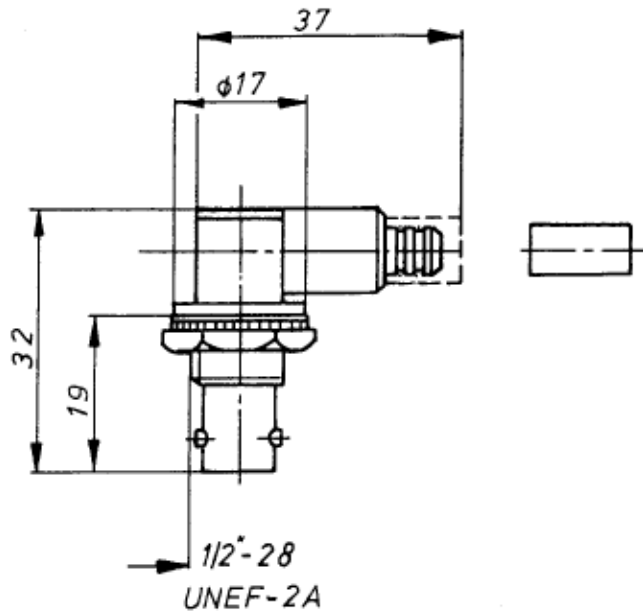
Inner conductor - Solder connection

Outer conductor - Clamp connection

Accessories (extra order): Insulation Washer Part-No. 2-1887-9200 (black) and other colours

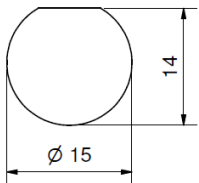
Cable-nominal -Ø	Cable Group*	Reference Cable*	Part Number	Assembly Instruction
3	1, 2	RG-174; RG-179B	1-1240-2142	10
4	3, 4	RG-122; RG-195	1-1241-2142	
5	5, 64	---	1-1242-2142	5
	19, 42	0.6/2.8AF <i>Draka</i>	1-1435-2142	
6	8	RG-62	1-1243-2142	13
	23	0.6/3.7 <i>Draka</i>	1-1256-2142	
	50	0.8/3.7AF <i>Draka</i>	1-1436-2142	
7	11, 51	0.8/4.9D; 1.0/4.8AF <i>Draka</i>	1-1244-2142	5
9	12, 13	1.0/6.6; RG-6A	1-1245-2142	6
	52	1.4/6.6AF <i>Draka</i>	1-4071-2142	
11	28	RG-11A	1-2252-2142	
	29	RG-13A	1-2253-2142	

* see *Cable Table Coaxial Cable*



Mounting hole without Insulation Washer

Mounting panel ≤ 4 mm
without serrated washer ≤ 5 mm



Mounting hole with Insulation Washer

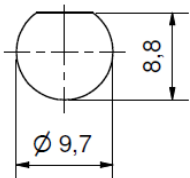
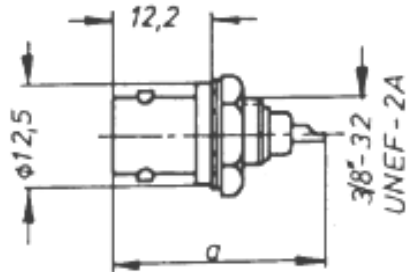
Mounting panel ≤ 2 mm
without serrated washer ≤ 3 mm

Crimp connection

Accessories (extra order): Insulation Washer Part-No. 2-1887-9200 (black) and other colours

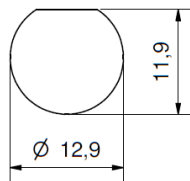
Cable-nominal -Ø	Cable Group*	Reference Cable*	Part Number	Assembly Instruction
3	1	RG-174	1-3336-2143	7
	2	RG-179B	1-3335-2143	
4	3	RG-122	1-3334-2143	
	4	RG-195	1-3333-2143	
5	19	---	1-3331-2143	
6	8	RG-62	1-3329-2143	
	23	0.6/3.7 <i>Draka</i>	1-3330-2143	7
7	11	0.8/4.9D	1-3328-2143	
8	12	RG-6A	1-3327-2143	
9	13	1.0/6.6	1-3326-2143	
11	28	RG-11A	1-3338-2143	
	29	RG-13A	1-3337-2143	

* see *Cable Table Coaxial Cable*



Mounting hole without Insulation Washer

	$a = 26.7$	$a = 29.7$
Mounting panel	$\leq 5 \text{ mm}$	$\leq 8 \text{ mm}$
without serrated washer	$\leq 6 \text{ mm}$	$\leq 9 \text{ mm}$



Mounting hole with Insulation Washer

	$a = 26.7$	$a = 29.7$
Mounting panel	$\leq 3 \text{ mm}$	$\leq 6 \text{ mm}$
without serrated washer	$\leq 4 \text{ mm}$	$\leq 7 \text{ mm}$

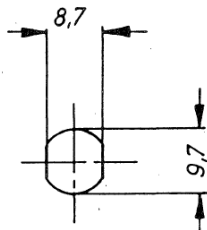
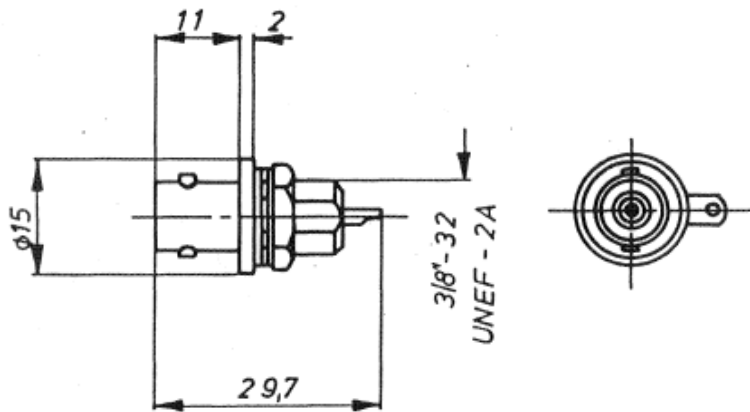
Serrated washer with solder tag

Accessories (extra order): Insulation washer Part-No. 2-1855-9200 (black) and other colours

Part Number	Dimension ,a'
1-1299-2144	26.7
1-2731-2144	29.7

Panel Socket with gasket

BNC 75 Ohm



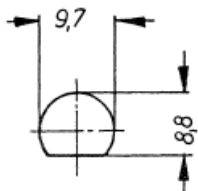
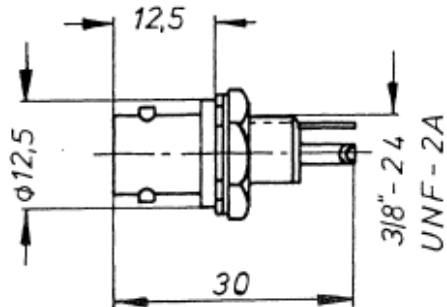
Mounting hole
Mounting panel ≤ 8 mm
without serrated washer ≤ 9 mm

with housing seal and serrated washer with solder tag

Part Number

1-3563-2144

DAMAR & HAGEN

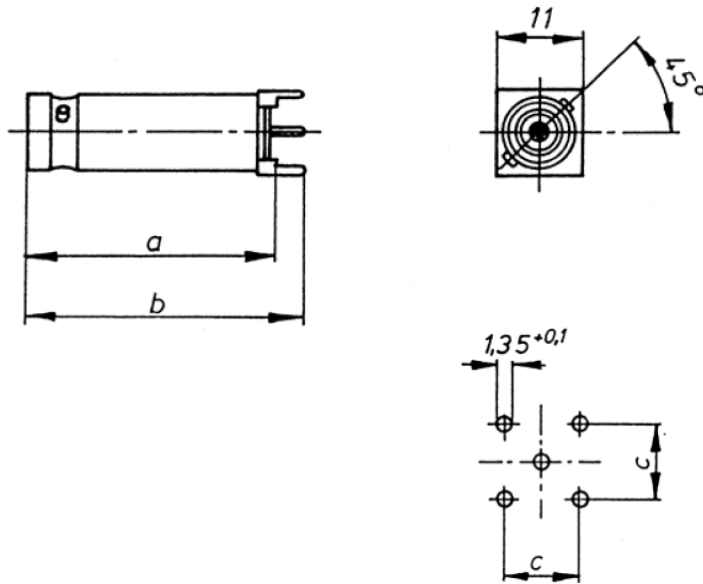


Mounting hole
 Mounting panel ≤ 5 mm
 without serrated washer ≤ 6 mm

Insulation flange and insulation: Polycarbonate (PC)

Part Number	Insulating flange colour*	
1-4230-2144	yellow	RAL 1003
1-4231-2144	orange	RAL 2010
1-4232-2144	red	RAL 3001
1-4233-2144	violet	RAL 4008
1-4234-2144	blue	RAL 5005
1-4235-2144	green	RAL 6032
1-4236-2144	grey	RAL 7004
1-4237-2144	brown	RAL 8002
1-4238-2144	white	RAL 9003
1-4239-2144	black	RAL 9004
1-1300-2144	lightgrey	RAL 7035
1-8118-2144	turquoise (cyan)	RAL 5018

* Colour differences are not excluded, due to different manufacturing processes and pigmentation. Colour illustration only used for orientation.

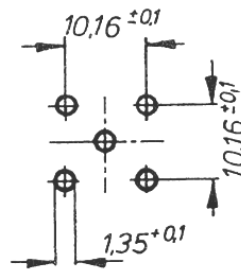
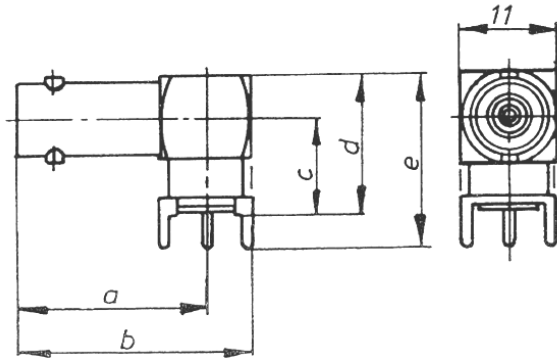


Mounting holes



for printed circuits

Part Number	Dimension		
	a	b	c
1-1343-2144	34.0	37.5	10.16
1-4698-2144	29.0	32.5	10.16
1-1449-2144	22.0	25.5	10.16
1-4490-2144	13.0	16.5	10.16
1-5075-2144	10.5	14.0	6.1

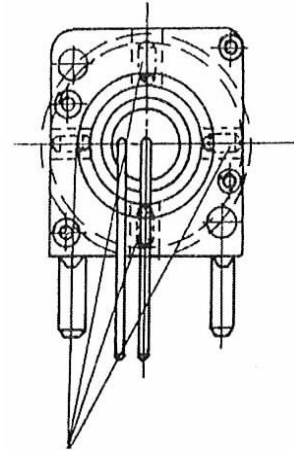
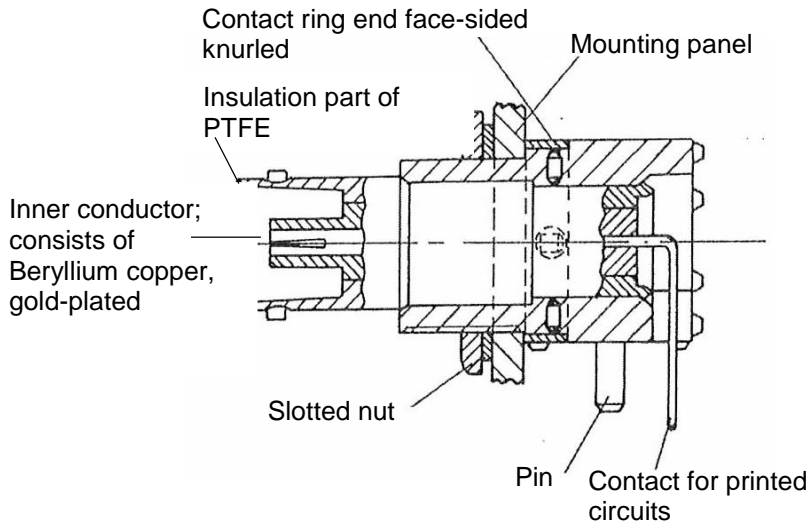


Mounting holes

for printed circuits

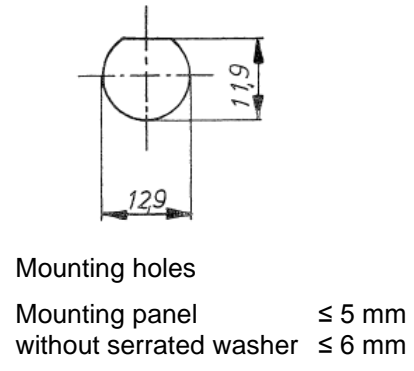
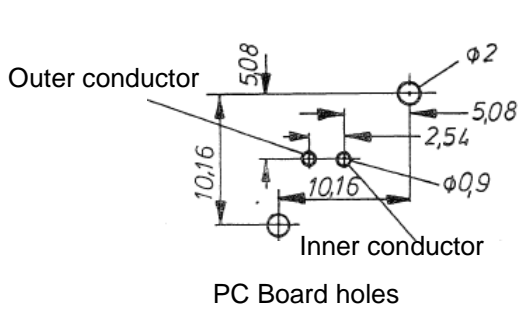
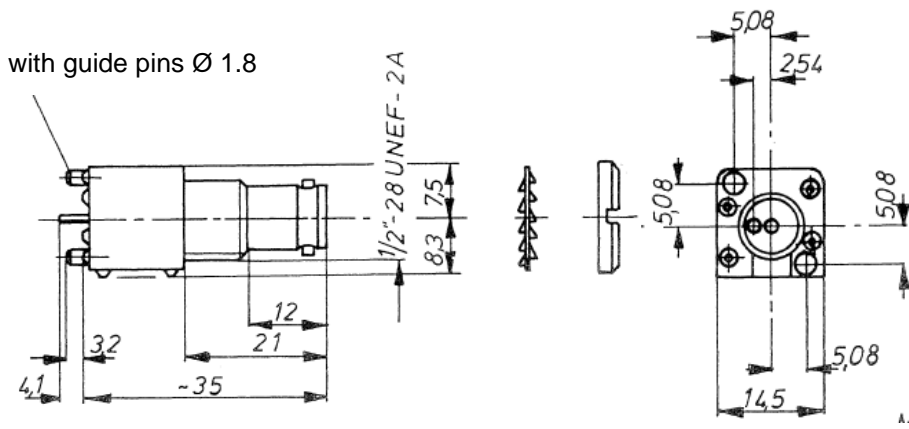
Part Number	Dimension				
	a	b	c	d	e
1-4884-2145	26.5	32.0	6.5	12.0	15.5
1-3265-2145	26.5	32.0	8.5	14.0	17.5
1-1346-2145	26.5	32.0	13.2	18.7	22.2
1-6268-2145	18.0	23.5	6.5	12.0	15.5

BNC-Panel Sockets with Insulation base for PC boards



Distribution up to four capacitors. In association with the contact ring, they're the shortest RF-wireway

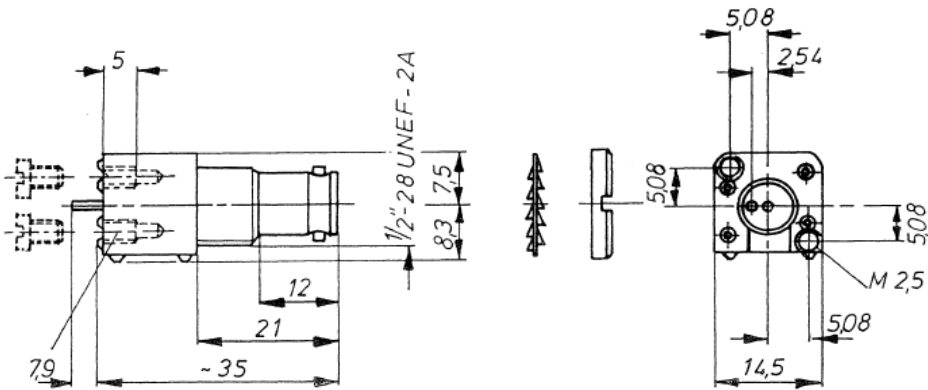




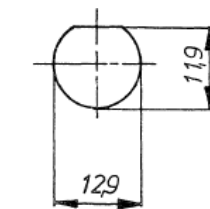
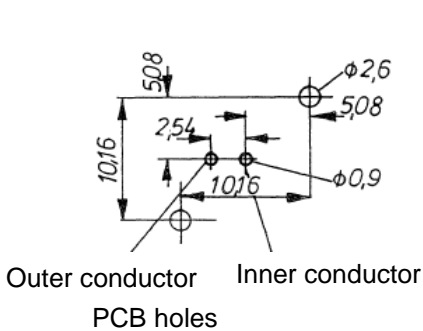
**Insulated,
Mounting in printed circuits – also with capacitive decoupling**

Accessories (extra order): Socket wrench Part-No. 90-1108-1808
 Slotted Nut with colour ring Part-No. 2-2994-2494 (black) and other colours

Capacity after assembly between the cable shield and housing potential for removing RF-interference levels and EMI reduction.	Part Number
9400 pF	1-3839-2144
without	1-3700-2144



for fixing screw M 2.5



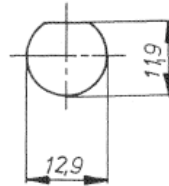
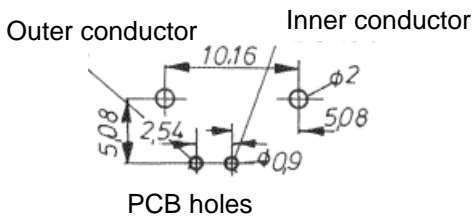
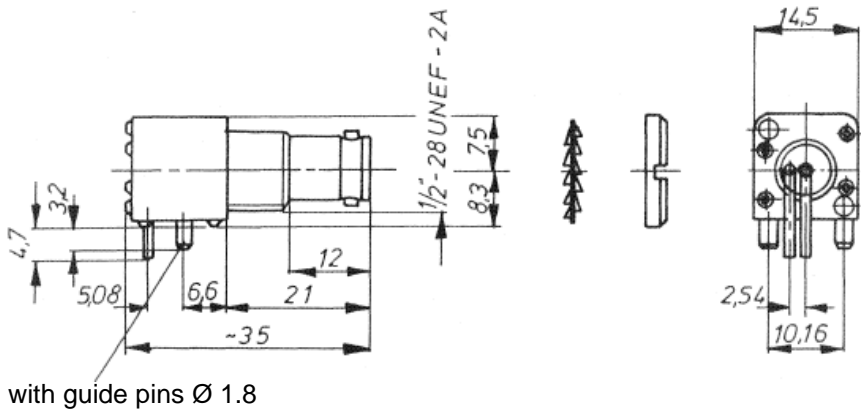
Mounting holes

Mounting panel ≤ 5 mm
without serrated washer ≤ 6 mm

**Insulated,
Mounting in printed circuits – also with capacitive decoupling**

Accessories (extra order): Socket wrench Part-No. 90-1108-1808
Slotted Nut with colour ring Part-No. 2-2994-2494 (black) and other colours

Capacity	Part Number
after assembly between the cable shield and housing potential for removing RF-interference levels and EMI reduction.	
9400 pF	1-3838-2144
without	1-3699-2144

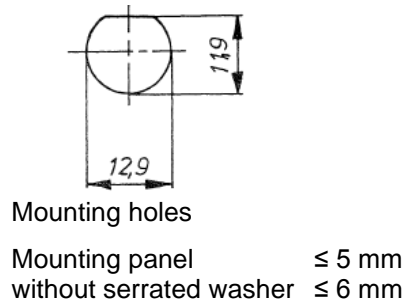
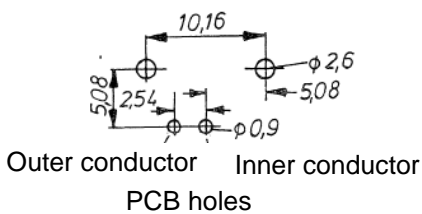
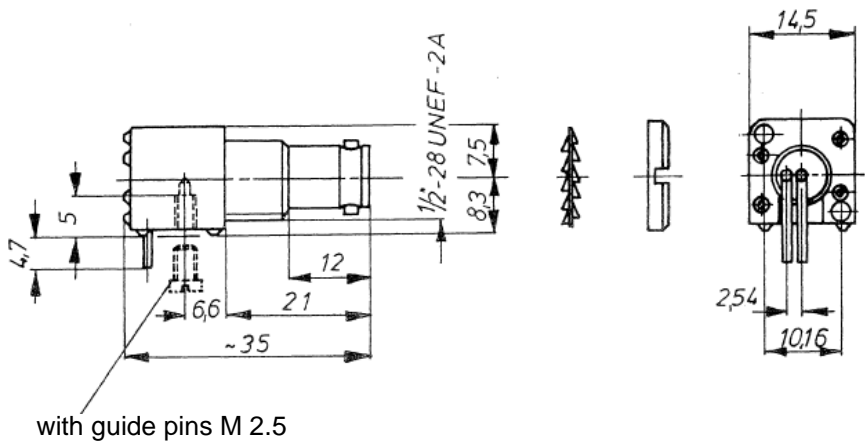


Mounting holes
 Mounting panels \leq 5 mm
 without serrated washer \leq 6 mm

**Insulated,
 Mounting in printed circuits – also with capacitive decoupling**

Accessories (extra order): Socket wrench Part-No. 90-1108-1808
 Slotted Nut with colour ring Part-No. 2-2994-2494 (black) and other colours

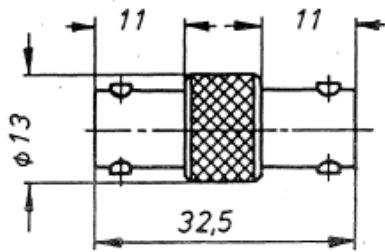
Capacity	Part Number
after assembly between the cable shield and housing potential for removing RF-interference levels and EMI reduction.	
9400 pF	1-3841-2145
without	1-3702-2145



**Insulated,
Mounting in printed circuits – also with capacitive decoupling**

Accessories (extra order): Socket wrench Part-No. 90-1108-1808
 Slotted Nut with colour ring Part-No. 2-2994-2494 (black) and other colours

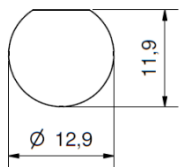
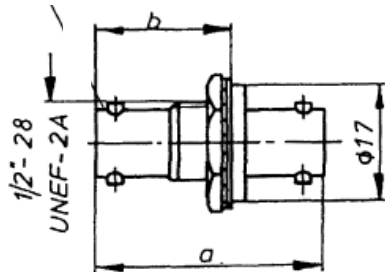
Capacity after assembly between the cable shield and housing potential for removing RF-interference levels and EMI reduction	Part Number
9400 pF	1-3840-2145
without	1-3701-2145



Part Number

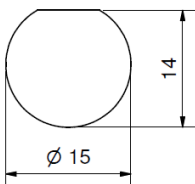
1-1347-2150

DAMAR & HAGEN



Mounting hole without insulation washer

	$a = 32.5$	$a = 36.5$
Mounting panel	$\leq 5 \text{ mm}$	$\leq 9 \text{ mm}$
without serrated washer	$\leq 6 \text{ mm}$	$\leq 10 \text{ mm}$

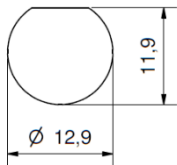
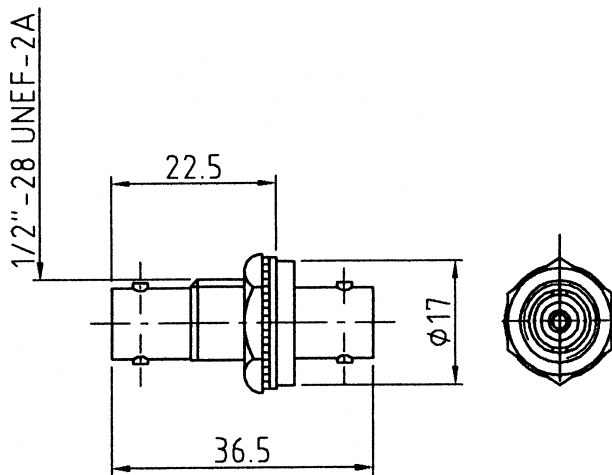


Mounting hole with insulation washer

	$a = 32.5$	$a = 36.5$
Mounting panel	$\leq 3 \text{ mm}$	$\leq 7 \text{ mm}$
without serrated washer	$\leq 4 \text{ mm}$	$\leq 8 \text{ mm}$






Accessories (extra order): Insulation washer Part-No. 2-1887-9200 (black) and other colours

Part Number	Dimension	
	a	b
1-1348-2153	32.5	20.0
1-3453-2153	36.5	24.0

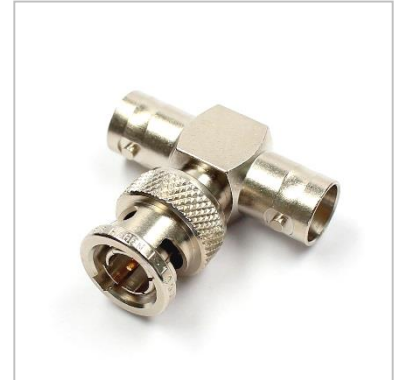
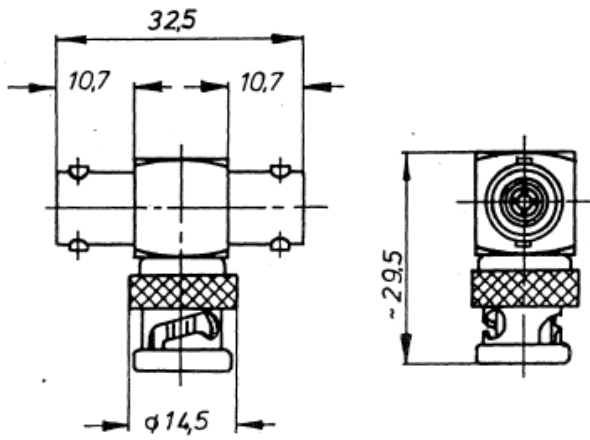


Mounting hole
 Mounting panel ≤ 6 mm
 without serrated washer ≤ 7 mm

Insulated assembly Insulating flange of Polycarbonate (PC)

Part Number	Insulating flange colour*	
1-6674-2153	yellow	 RAL 1003
1-6675-2153	orange	 RAL 2010
1-6676-2153	red	 RAL 3001
1-6677-2153	violet	 RAL 4008
1-6678-2153	blue	 RAL 5005
1-6679-2153	green	 RAL 6032
1-6680-2153	grey	 RAL 7004
1-6681-2153	brown	 RAL 8002
1-6682-2153	white	 RAL 9003
1-6683-2153	black	 RAL 9004
1-6167-2153	lightgrey	 RAL 7035
1-8119-2153	turquoise (cyan)	 RAL 5018

* Colour differences are not excluded, due to different manufacturing processes and pigmentation. Colour Illustration only used for orientation.



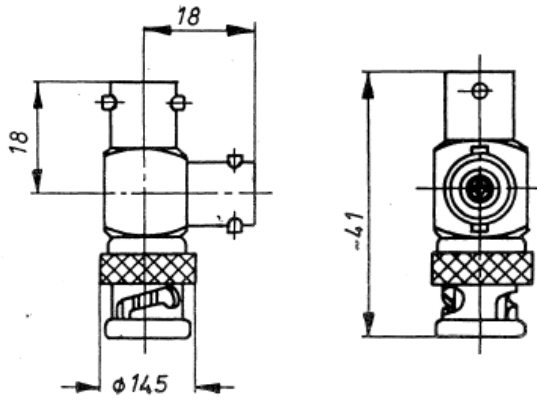
Part Number

1-1353-2174

DAMAR & HAGEN

T-Adaptor

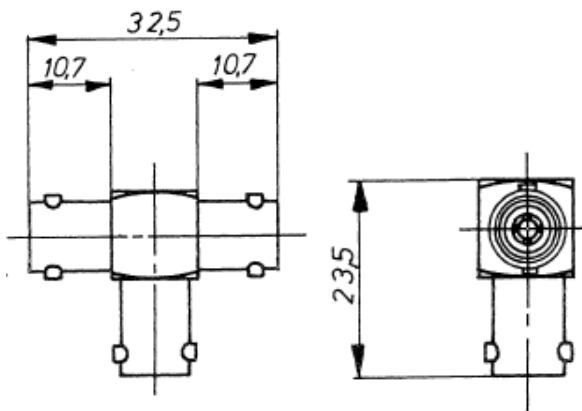
BNC 75 Ohm



Part Number

1-2385-2174

DAMAR & HAGEN



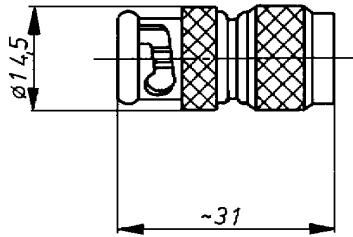
Part Number

1-4219-2171

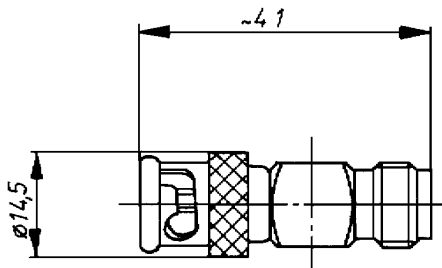
DAMAR & HAGEN

Adapter
BNC 75 Ohm

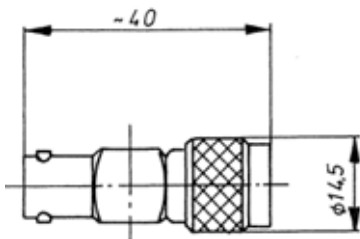
1



2



3



4

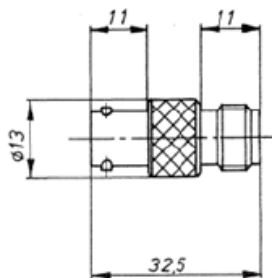
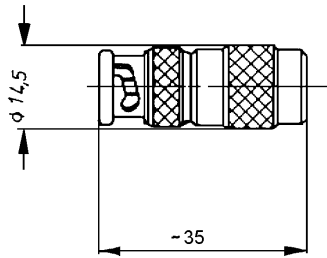
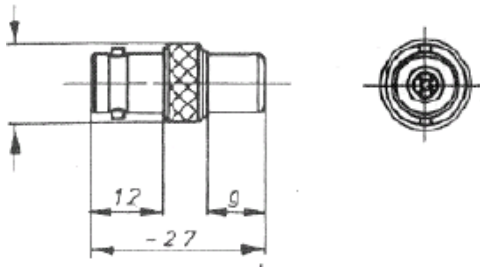


Illustration	Part Number	Description	
		1st series	2nd series
1	1-3921-2910	Plug BNC 75 Ohm	Plug TNC 75 Ohm
2	1-3922-2930	Plug BNC 75 Ohm	Socket TNC 75 Ohm
3	1-3923-2930	Socket BNC 75 Ohm	Plug TNC 75 Ohm
4	1-3924-2950	Socket BNC 75 Ohm	Socket TNC 75 Ohm

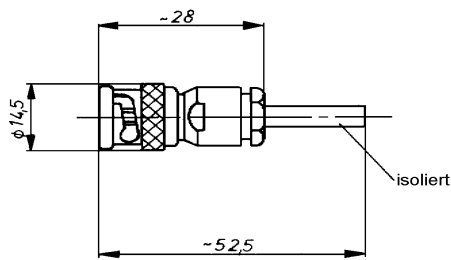
5



6



7



8

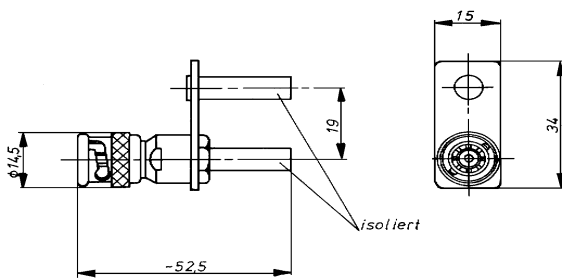


Illustration	Part Number	Description 1st series	2nd series
5	1-3458-2930	Plug BNC 75 Ohm	Socket IEC
6	1-3459-2930	Socket BNC 75 Ohm	Plug IEC
7	1-3106-3030	Plug BNC 75 Ohm	1 Socket Ø 4 mm safety connector, Multi-Contact
8	1-3053-3030	Plug BNC 75 Ohm	2 sockets Ø 4 mm safety connector, Multi-Contact

Adapter

BNC 75 Ohm

9

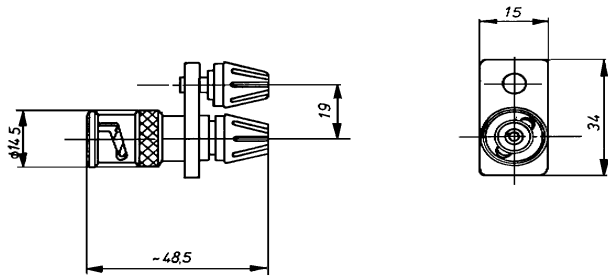
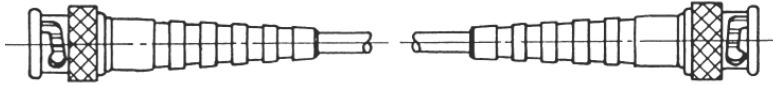


Illustration	Part Number	Description	
		1st series	2nd series
9	1-1396-3030	Plug BNC 75 Ohm	2 Sockets Ø 4 mm cable clamping laboratory connector 'banana'

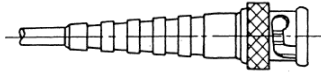
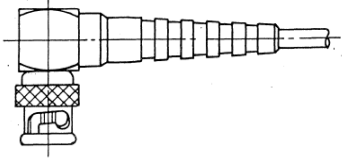
DAMAR & HAGEN

Cable Assemblies

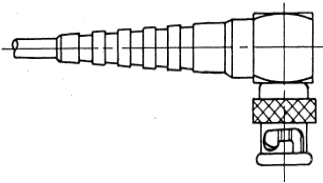
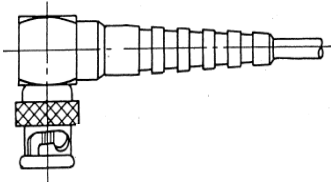
BNC 75 Ohm



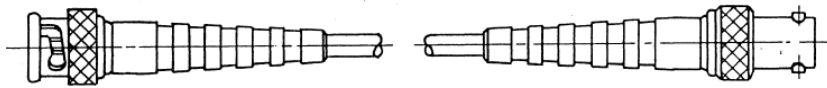
Description	Cut length in m	Part Number
Coaxial Cable RG-59 75 Ohm, black 13-1001-1000 with Cable Plugs 1-1190-2100 and black Strain Relief Sleeves 2-1521-3331	0.25	21-1049-1009
	0.50	21-1050-1009
	0.75	21-1051-1009
	1.0	21-1052-1009
	1.5	21-1053-1009
	2.0	21-1054-1009
	3.0	21-1055-1009
	5.0	21-1056-1009
	8.0	21-1057-1009
	10.0	21-1058-1009



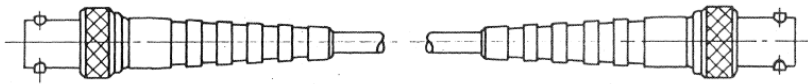
Description	Cut length in m	Part Number
Coaxial Cable RG-59 75 Ohm, black 13-1001-1000 with Cable Plug - angled 1-1210-2101 and Cable Plug 1-1190-2100 and black Strain Relief Sleeves 2-1521-3331	0.25	21-1078-1009
	0.50	21-1079-1009
	0.75	21-1080-1009
	1.0	21-1081-1009
	1.5	21-1082-1009
	2.0	21-1083-1009
	3.0	21-1084-1009
	5.0	21-1085-1009
	8.0	21-1086-1009
	10.0	21-1087-1009



Description	Cut length in m	Part Number
Coaxial Cable RG-59 75 Ohm, black 13-1001-1000 with Cable Plugs - angled 1-1210-2101 and black Strain Relief Sleeves 2-1521-3331	0.25	21-1108-1009
	0.50	21-1109-1009
	0.75	21-1110-1009
	1.0	21-1111-1009
	1.5	21-1112-1009
	2.0	21-1113-1009
	3.0	21-1114-1009
	5.0	21-1115-1009
	8.0	21-1116-1009
	10.0	21-1117-1009



Description	Cut length in m	Part Number
Coaxial Cable RG-59 75 Ohm, black 13-1001-1000 with Cable Plug 1-1190-2100 and Cable Socket 1-1233-2140 and black Strain Relief Sleeves 2-1521-3331	0.25	21-1138-1015
	0.50	21-1139-1015
	0.75	21-1140-1015
	1.0	21-1141-1015
	1.5	21-1142-1015
	2.0	21-1143-1015
	3.0	21-1144-1015
	5.0	21-1145-1015
	8.0	21-1146-1015
	10.0	21-1147-1015

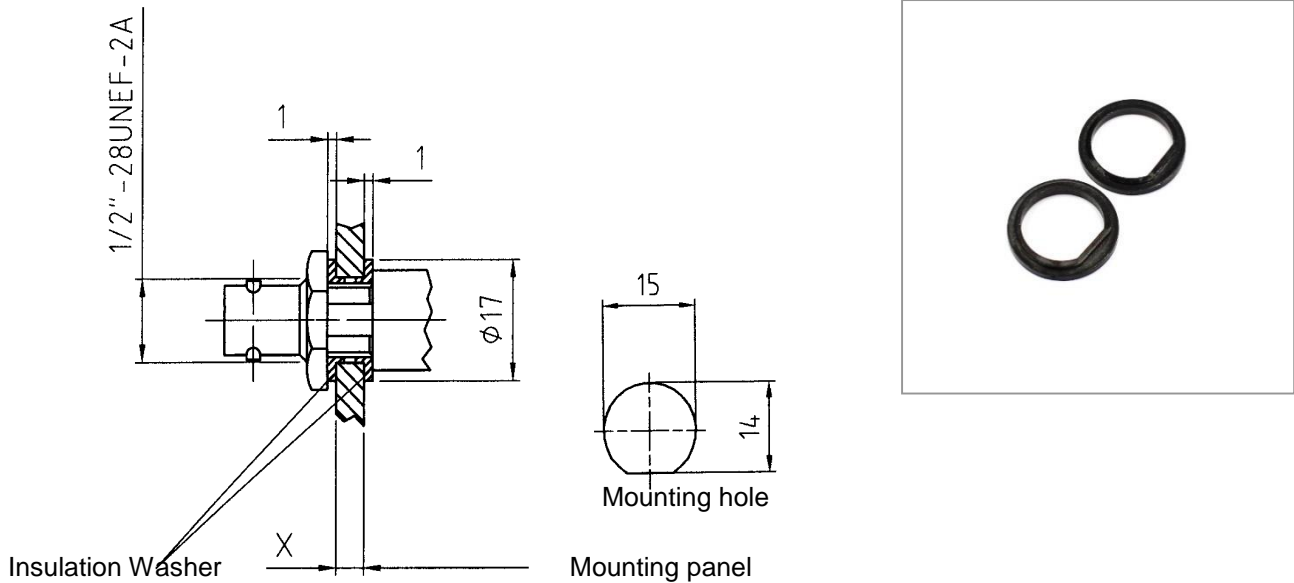


Description	Cut length in m	Part Number
Coaxial Cable RG-59 75 Ohm, black 13-1001-1000 with Cable Sockets 1-1233-2140 and black Strain Relief Sleeves 2-1521-3331	0.25	21-1168-1018
	0.50	21-1169-1018
	0.75	21-1170-1018
	1.0	21-1171-1018
	1.5	21-1172-1018
	2.0	21-1173-1018
	3.0	21-1174-1018
	5.0	21-1175-1018
	8.0	21-1176-1018
	10.0	21-1177-1018

Accessoires & Spare Parts

BNC 75 Ohm

Insulation Washer



Usage for insulation and colour coding

Insulation Washer consists of two identical washers.

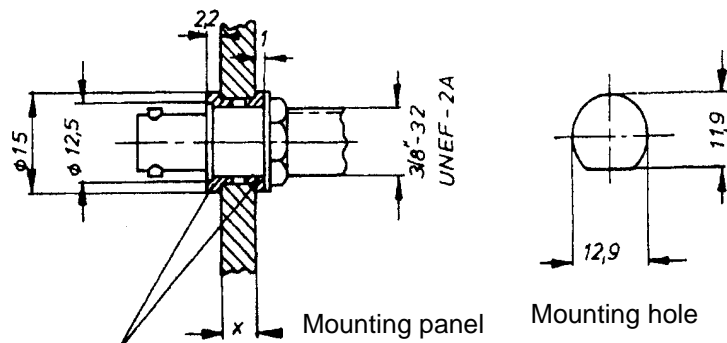
The max. dimension of the mounting panel ,X' of the used connector will be reduced about 2 mm by insulated assembly.

Material: Polycarbonate (PC)

Colour*	Part Number for mounting panel $x \geq 1.5$
yellow	2-2598-9200
orange	2-2599-9200
red	2-2600-9200
violet	2-2601-9200
blue	2-2602-9200
green	2-2603-9200
grey	2-2604-9200
brown	2-2605-9200
white	2-2606-9200
black	2-1887-9200
turquoise (cyan)	2-5492-9200

*Colour Illustrations only used for orientation - Colour differences not excluded.

Insulation Washer



Insulation Washer



Usage for insulation and colour coding

Insulation Washer consists of two different washers.

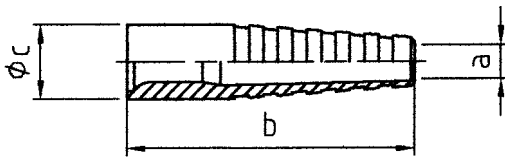
The max. dimension of the mounting panel, 'X' of the used connector will be reduced about 2 mm by insulated assembly.

Material: Polycarbonate (PC)

Colour*	Part Number for mounting panel $x \geq 1.5$
yellow	2-2580-9200
orange	2-2581-9200
red	2-2582-9200
violet	2-2583-9200
blue	2-2584-9200
green	2-2585-9200
grey	2-2586-9200
brown	2-2587-9200
white	2-2588-9200
black	2-1855-9200
turquoise (cyan)	2-5490-9200

* Colour illustrations only used for orientation – Colour differences not excluded.

Strain Relief Sleeve



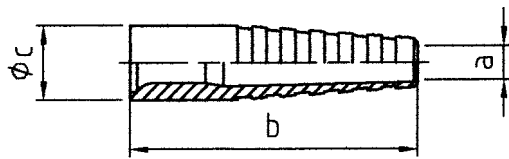
Usage for anti-kink and colour identification

For a comfortable assembly we recommend our Pull-Out Mandrel (see tools).

Material: Polyurethane (PUR)

a= nominal diameter	b	c	Part Number	Colour			
Ø 2	35	8	2-2799-3331	yellow			
			2-2800-3331	orange			
			2-2801-3331	red			
			2-2802-3331	violet			
			2-2803-3331	blue			
			2-2804-3331	green			
			2-2805-3331	grey			
			2-2806-3331	brown			
			2-2807-3331	white			
			2-2808-3331	black			
			2-5334-3331	turquoise (cyan)			
Ø 3	35	8	2-1482-3331	yellow			
			2-1483-3331	orange			
			2-1484-3331	red			
			2-1485-3331	violet			
			2-1486-3331	blue			
			2-1487-3331	green			
			2-1488-3331	grey			
			2-1489-3331	brown			
			2-1490-3331	white			
			2-1491-3331	black			
			2-5335-3331	turquoise (cyan)			
			Ø 4	40	10	2-1492-3331	yellow
						2-1493-3331	orange
						2-1494-3331	red
2-1495-3331	violet						
2-1496-3331	blue						
2-1497-3331	green						
2-1498-3331	grey						
2-1499-3331	brown						
2-1500-3331	white						
2-1501-3331	black						
2-5336-3331	turquoise (cyan)						

Strain Relief Sleeve



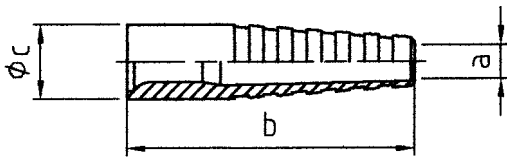
Usage for anti-kink and colour identification

For a comfortable assembly we recommend our Pull-Out Mandrel (see tools).

Material: Polyurethane (PUR)

a= nominal diameter	b	c	Part Number	Colour			
Ø 5	40	10	2-1502-3331	yellow			
			2-1503-3331	orange			
			2-1504-3331	red			
			2-1505-3331	violet			
			2-1506-3331	blue			
			2-1507-3331	green			
			2-1508-3331	grey			
			2-1509-3331	brown			
			2-1510-3331	white			
			2-1511-3331	black			
			2-5337-3331	turquoise (cyan)			
			2-3545-3331	light blue			
			Ø 6	45	11.5	2-1512-3331	yellow
2-1513-3331	orange						
2-1514-3331	red						
2-1515-3331	violet						
2-1516-3331	blue						
2-1517-3331	green						
2-1518-3331	grey						
2-1519-3331	brown						
2-1520-3331	white						
2-1521-3331	black						
2-5338-3331	turquoise (cyan)						
Ø 7	45	11.5				2-1522-3331	yellow
						2-1523-3331	orange
			2-1524-3331	red			
			2-1525-3331	violet			
			2-1526-3331	blue			
			2-1527-3331	green			
			2-1528-3331	grey			
			2-1529-3331	brown			
			2-1530-3331	white			
			2-1531-3331	black			
			2-5339-3331	turquoise (cyan)			

Strain Relief Sleeve



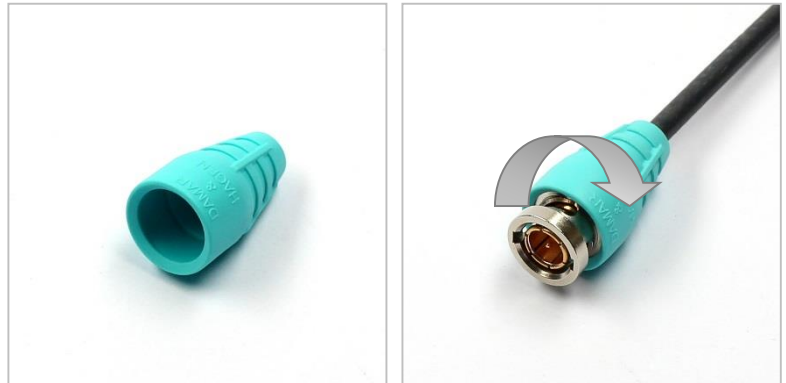
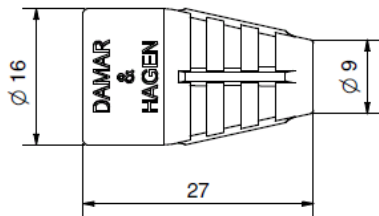
Usage for anti-kink and colour identification

For a comfortable assembly we recommend our Pull-Out Mandrel (see tools).

Material: Polyurethane (PUR)

a= nominal diameter	b	c	Part Number	Colour
Ø 8	45	12.5	2-5594-3331	yellow
			2-5595-3331	orange
			2-5596-3331	red
			2-5597-3331	violet
			2-5598-3331	blue
			2-5599-3331	green
			2-5600-3331	grey
			2-5601-3331	brown
			2-5602-3331	white
			2-5603-3331	black
			2-5604-3331	turquoise (cyan)
Ø 9	45	14.5	2-5356-3331	yellow
			2-5357-3331	orange
			2-5358-3331	red
			2-5359-3331	violet
			2-5360-3331	blue
			2-5361-3331	green
			2-5362-3331	grey
			2-5363-3331	brown
			2-5364-3331	white
			2-5365-3331	black
			2-5366-3331	turquoise (cyan)
Ø 11	45	14.5	2-5367-3331	yellow
			2-5368-3331	orange
			2-5369-3331	red
			2-5370-3331	violet
			2-5371-3331	blue
			2-5372-3331	green
			2-5373-3331	grey
			2-5374-3331	brown
			2-5375-3331	white
			2-5376-3331	black
			2-5377-3331	turquoise (cyan)

Twist Sleeve



Twist Sleeve mounted with BNC Cable Plug

Usage for easier and faster coupling of BNC-Cable Plugs for Cable-Ø 5 mm

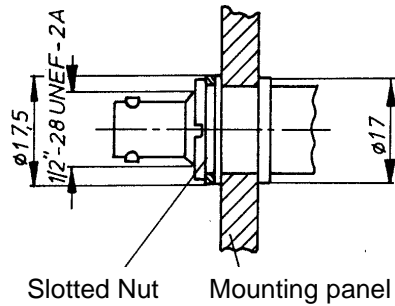
Material: Polyurethane (PUR)

Cable nominal-Ø	Colour*	Part Number
5	yellow	2-6212-3332
	orange	2-6213-3332
	red	2-6214-3332
	violet	2-6215-3332
	blue	2-6216-3332
	green	2-6217-3332
	grey	2-6218-3332
	brown	2-6219-3332
	white	2-6220-3332
	black	2-6221-3332
	turquoise (cyan)	2-6222-3332

*Colour Illustration only used for orientation – Colour differences not excluded



Slotted Nut with colour ring



Usage for fixture and colour identification

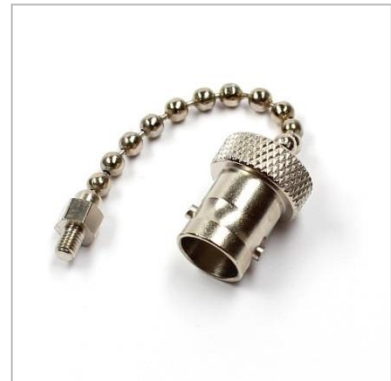
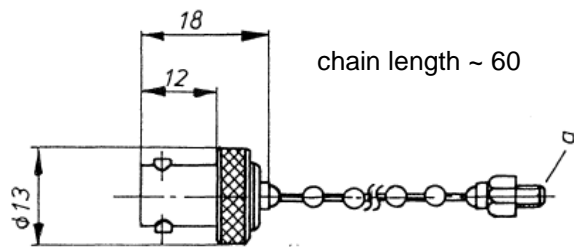
The possible mounting plate dimension of the used connector will not be reduced by using the Slotted Nut. The packing density of the patch panels isn't be impacted negatively.

Accessories (extra order): Socket Wrench Part-No. 90-1108-1808 for Slotted Nut

Colour ring*	Part Number
yellow	2-2985-2494
orange	2-2986-2494
red	2-2987-2494
violet	2-2988-2494
blue	2-2989-2494
green	2-2990-2494
grey	2-2991-2494
brown	2-2992-2494
white	2-2993-2494
black	2-2994-2494
turquoise (cyan)	2-5423-2494

*Colour Illustrations only used for orientation - Colour differences not excluded.

Protective Cap

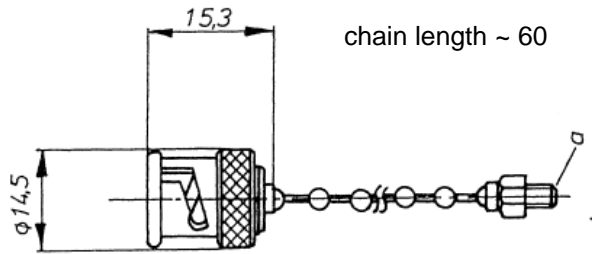


Protective Cap for BNC Plugs

Fixing	,a'	with chain	without	Part Number
on mounting panel	M3	X		2-1052-7463
without			X	2-1051-7463



Protective Cap

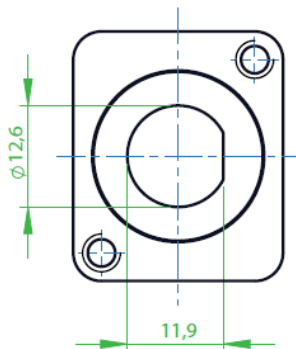
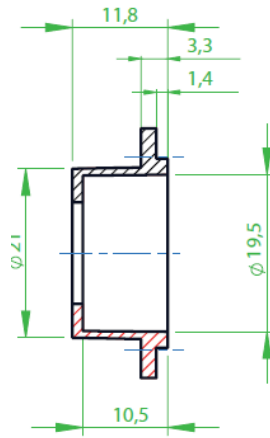
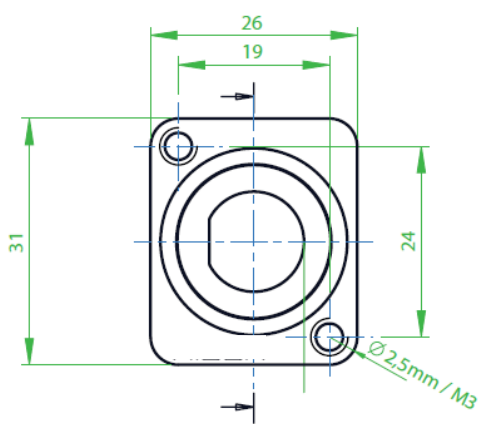


Protective Cap for BNC Sockets

Fixing	,a'	with chain	without	Part Number
on mounting panel	M3	X		2-1056-7463
without			X	2-1055-7463



XLR-Mounting Flange



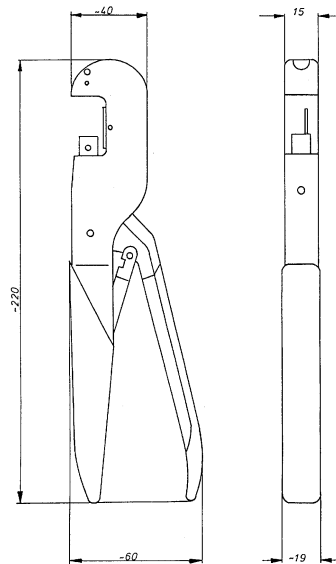
XLR-Mounting Flange with D-hole

Part Number	Description
2-5810-5077	metal, black, M3 thread, 26 x 31 mm, with D-hole 11.9/12.6 mm for BNC

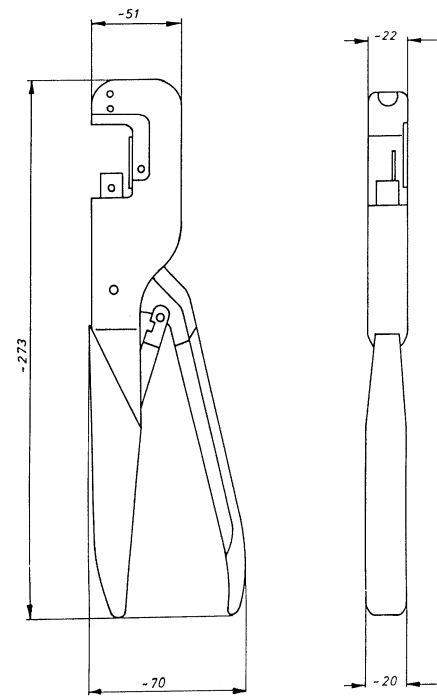
Tool
BNC 75 Ohm

Crimp Plier

Size 0



Size 1



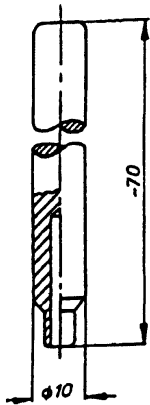
Part Number	90-1117-1000	90-1022-1000
Description	Application with crimping dies – Size 0 (max. Ø 7 mm)	Application with crimping dies – Size 1 (max. Ø 14 mm)
Accessories	incl. pull-off lever	

Crimp Die

Size 0			Size 1		
Cable-nominal-Ø	Cable Group*	Part Number	Cable-nominal-Ø	Cable Group*	Part Number
3	1, 2, 55, 79	90-1123-1100	3	1, 2, 55, 79	90-1008-1100
4	3, 4, 41, 45, 67, 71, 75, 56, 63, 74, 76	90-1126-1100	4	3, 4, 41, 45, 56, 63, 67, 71, 74, 75, 76	90-1011-1100
5	19, 42, 61, 83	90-1128-1100	5	19, 42, 47, 61, 83	90-1013-1100
6	8, 23, 32, 50, 54, 70, 73	90-1131-1100	6	8, 23, 32, 50, 54, 70, 73	90-1015-1100
7	51, 58	90-1134-1100	7	51, 58	90-1017-1100
	11, 33, 38, 69	90-1135-1100		11, 33, 38, 69	90-1018-1100
			8	59, 87	90-1020-1100
				12, 57, 77	90-1021-1100
			9	13, 34, 52, 66	90-1038-1100
			11	80	90-1030-1100
				28, 35, 36, 60	90-1031-1100
29	90-1032-1100				
Incl. 2 clamping sleeves Application with Crimp Plier (Size 0) Part-No. 90-1117-1000 Accessories (extra order): Expanding Mandrel			Incl. 2 clamping sleeves Application with Crimp Plier (Size 1) Part-No. 90-1022-1000 Accessories (extra order): Expanding Mandrel		

* see Cable Table Coaxial Cable

Expanding Mandrel



Usage for expanding the screening braid of Coaxial- and Triaxial Cables

Diameter*	Part Number
0.8 – 0.9	90-1064-1201
1.0 – 1.1	90-1280-1201
1.2 – 1.3	90-1281-1201
1.4 – 1.5	90-1282-1201
1.5 – 1.6	90-1033-1201
1.6 – 1.7	90-1283-1201
1.8 – 1.9	90-1284-1201
2.0 – 2.1	90-1285-1201
2.1 – 2.2	90-1195-1201
2.2 – 2.3	90-1286-1201
2.4 – 2.5	90-1287-1201
2.5 – 2.6	90-1034-1201
2.6 – 2.7	90-1288-1201
2.8 – 2.9	90-1289-1201
3.0 – 3.1	90-1035-1201
3.2 – 3.3	90-1290-1201
3.4 – 3.5	90-1291-1201
3.6 – 3.7	90-1292-1201
3.7 – 3.8	90-1004-1201

Diameter*	Part Number
3.8 – 3.9	90-1293-1201
4.0 – 4.2	90-1294-1201
4.3 – 4.5	90-1295-1201
4.6 – 4.8	90-1296-1201
4.9 – 5.1	90-1036-1201
5.2 – 5.4	90-1297-1201
5.5 – 5.7	90-1298-1201
5.8 – 6.0	90-1299-1201
6.1 – 6.3	90-1300-1201
6.4 – 6.6	90-1005-1201
6.7 – 6.9	90-1301-1201
7.0 – 7.3	90-1302-1201
7.4 – 7.5	90-1037-1201
7.4 – 7.7	90-1303-1201
7.9 – 8.0	90-1196-1201
7.8 – 8.1	90-1304-1201
8.2 – 8.5	90-1305-1201

* Diameter refer to the diameter of the dielectric, including any additional shield by aluminum- or copper film.

Cable Stripper

Cable Stripper for coaxial cable and round (shielded) data cables from 2.5 to 8 mm diameter.

1-, 2- and 3-level stripping in one operation.

(Weidmüller CST 9030500000)



Accessories (extra order):

Cassette Part-No. 90-1339-2516 (black) for stripping of Coaxial Cables acc. Assembly Instruction 7 (all BNC series - except BNCpro)

Cassette Part-No. 90-1340-2516 (violet) for stripping of Coaxial Cables acc. Assembly Instruction 100 (BNCpro)

Cassette Part-No. 90-1344-2516 (cyan) for stripping of Coaxial Cables acc. Assembly Instruction 200 (series 1.0/2.3)

other Cassettes on request.

Part Number
90-1338-1606

Cassette



for stripping of Coaxial Cables acc. Assembly Instruction 7 (BNC 75 Ohm)

Accessories for Cable Stripper Part-No. 90-1338-1606

Part Number
90-1339-2516

Cable Stripper



Accessories (inclusive): 12 Length stops
3 Replace cutting-blades
1 Set guide bushings

Part-No. 85-5386-9120
Part-No. 85-5388-9175
Part-No. 85-5390-9061

Description	Part Number
Max. insulation stripping performance of 10 mm \varnothing	90-1061-1606

DAMAR & HAGEN

Cable Shear




- cutting single-, multiple- and fine wire aluminum and copper cables
- clean and smooth cut by one-hand operation
- without crushing or deformation of the cable



cut with side cutter

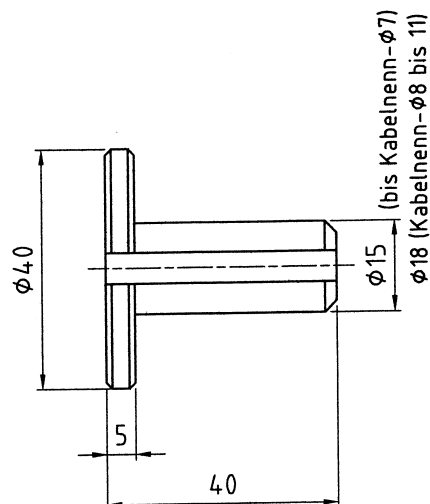
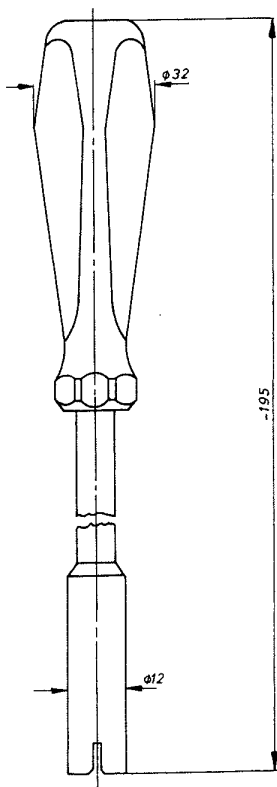


cut with cable shear

Cutting data		
		
Cu 16 / Al 35	Cu 50 / Al 50	Cu 70

Part Number	
90-1353-2610	length 170 mm, weight 240 g

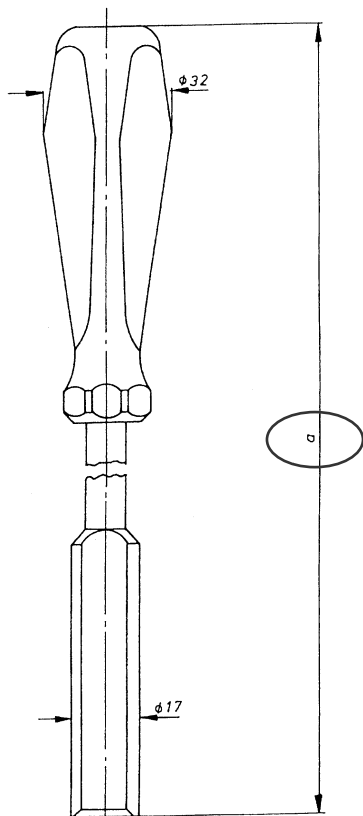
Socket Wrench/ Pull Out Mandrel



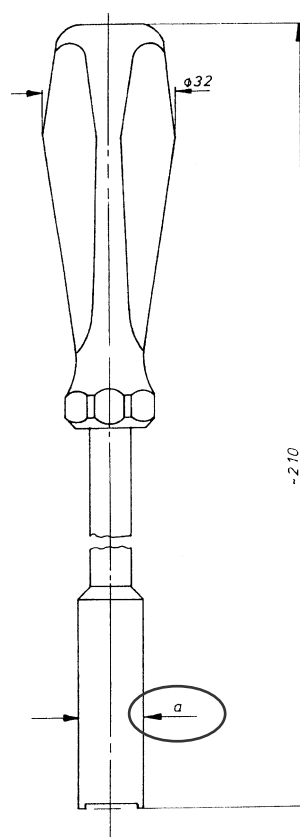
For easy mounting of Strain Relief Sleeves.

Part Number	For Strain Relief Sleeves with cable nominal- ϕ	Part Number
90-1119-1808	2	90-1207-1215
	3	90-1208-1215
	4+5	90-1209-1215
Socket Wrench to hold against the BNC Sockets during assembly	6+7	90-1210-1215
	8	90-1237-1215
	9+11	90-1235-1215

Socket Wrench



Insertion and extraction tool for BNC Cable Plugs, if Sockets are closely mounted and finger access isn't possible.



For Slotted Nut with thread $\frac{1}{2}$ " .

Part Number	Dimension ,a'	Part Number	Dimension ,a'	Thread
90-1227-1808	180 mm	90-1108-1808	16 mm	$\frac{1}{2}$ "
90-1065-1808	250 mm			
90-1201-1808	350 mm			

Cable (by meter)
BNC 75 Ohm

Coaxial Cable of Prysmian Group / Draka

Prysmian Group in Germany

The Prysmian Group in Germany is headquartered in Berlin under the name Prysmian Kabel und Systeme GmbH. It is one of the largest manufacturer of cables and wires for the power transmission in Germany.

The business comprises three divisions: Cable for Energy Supply Companies (Utilities), special cables for the Industry (Special Cables) and also cables and wires for the Installation (General Market). The production in the factories in Schwerin, Neustadt/Coburg, Wuppertal, Neumünster, Nürnberg and Berlin includes low- and up to medium voltage cables for different areas of use.

Prysmian is brand leader for special wires for the mining, for lifting equipment, conveyor mechanism and also for halogen-free cables with improved fire conditions.

In a highly competitive and demanding market Prysmian succeeds thanks to excellent research and development, production, logistics and the company meet the continually changing customers needs.

The certified quality management ensures a high product quality during the procurement, production to delivering processes. Prysmian focuses on sustainable and environmentally-oriented production processes.

The integrated management system meets the ISO 9001, ISO TS 16949, IRIS, TL 9000 and ISO 14001 and also the specification OHSAS 18001. Those are regularly monitored by independent experts.



Video Cable 75 Ω



Application

Video cables are primary used in closed circuit TV systems and in several studio applications for transmission of image signals.

Standards

For analogue and digital video signals (Composite, component, SDI, SDV, SDTI, HDTV)

Flame resistance

PVC: IEC 60332-1
 FRNC: IEC 60332-1, IEC 60754, IEC 61034
 FRNC-C: additionally IEC 60332-3 C

Construction

Inner conductor	solid copper wire, bare, diameter 0.6 mm
Insulation	Foam-PE, diameter 2.8 mm
Outer conductor	Al-PET-Al-foil under tinned copper braid, diameter 3.4 mm
Sheath	FRNC or PVC, diameter 4.5 mm green, RAL 6018
Printing	for FRNC: DRAKA - 0.6/2.8 AF - 75 Ω \pm 1% - HDTV FRNC for PVC: DRAKA - 0.6/2.8 AF - 75 Ω \pm 1% - HDTV

Electrical properties

at 20°C

DC resistance	Inner conductor	61 Ω /km
	Outer conductor	17 Ω /km
Mutual capacitance		52.8 pF/m
Characteristic impedance		75 Ω \pm 0.75 Ω
Velocity ratio		78 %
Screening factor		> 100 dB

Electrical data

at 20°C

Attenuation (dB/100m)		Return loss (dB)	
Frequency (MHz)		Frequency (MHz)	
1	1.1	50 – 300	≥ 26
3	1.9	300 – 3000	≥ 22
5	2.4	3000 – 3500	≥ 18
10	3.1	3500 – 5000	≥ 15
30	5.4		
100	10.5		
200	14.8		
300	17.9		
500	23.1		
800	29.3		
1000	32.8		
1500	40.4		
2250	49.8		
3000	59.3		
3500	66.3		
4000	71.5		
4500	77.0		
5000	82.8		

Technical data

Product code	Type	Weight kg/km	Standard delivery length m	Drum size KTG/ring	Copper content	Tensile force N	Bending radius mm	Storage
1002160 CT2738600	0.6/2.8 AF PVC green	27	1000	051	14	60	25	inside
1002203 CT2850202	0.6/2.8 AF FRNC-C gn	28	1000	051	14	60	25	inside

© PRYSMIAN GROUP 2011, All Rights Reserved

All sizes and values without tolerances are reference values. Specifications are for product as supplied by Prysmian Group: any modification or alteration afterwards of product may give different result.

The information contained within this document must not be copied, reprinted or reproduced in any form, either wholly or in part, without the written consent of Prysmian Group. The information is believed to be correct at the time of issue. Prysmian Group reserves the right to amend this specification without prior notice. This specification is not contractually valid unless specifically authorised by Prysmian Group.



Cable nominal-Ø	Cable Group*	Cable Type	Part Number
5	42	PVC	13-1030-1000
		FRNC	13-1016-1000

* see Cable Table Coaxial Cable



Video Cable 75 Ω



Application

Video cables are primary used in closed circuit TV systems and in several studio applications for transmission of image signals.

Standards

Composite, Componente

Flame resistance

PVC: IEC 60332-1
FRNC: IEC 60332-1; IEC 60754-2; IEC 61034

Construction

Inner conductor	solid copper wire, bare, diameter 0.6 mm
Insulation	PE, diameter 3.7 mm
Outer conductor	copper braid, bare, optical coverage 84 %, diameter 4.3 mm
Sheath	PVC, diameter 6.0 mm green, RAL 6018
Printing	DRAKA COMTEQ - 0.6/3.7 AF - 75 Ω \pm 1%

Electrical properties

at 20°C

DC resistance	Inner conductor	26 Ω /km
	Outer conductor	20 Ω /km
Mutual capacitance		67 pF/m
Characteristic impedance		75 Ω \pm 0.75 Ω
Velocity ratio		67 %
Screening factor		\geq 65 dB

Electrical data

at 20°C

Attenuation (dB/100m)		Return loss (dB)	
Frequency (MHz)		Frequency (MHz)	
0.1	0.36	50 - 300	≥ 26
0.3	0.62	300 - 800	≥ 20
0.6	0.9		
1	1.1		
3	1.9		
5	2.4		
10	3.4		
30	5.9		
100	10.9		
200	15.8		
300	19.5		
500	25.7		
800	33.3		

Technical data

Product code	Type	Weight kg/km	Standard delivery length m	Drum size KTG/ring	Copper content	Tensile force N	Bending radius mm	Storage
1002172 CT2740200	0.6/3.7 PVC green	50	1000	051	19.2	70	30	inside
1002213	0.6/3.7 FRNC-B green	50	1000	051	19.2	70	30	inside

© PRYSMIAN GROUP 2011, All Rights Reserved

All sizes and values without tolerances are reference values. Specifications are for product as supplied by Prysmian Group: any modification or alteration afterwards of product may give different result.

The information contained within this document must not be copied, reprinted or reproduced in any form, either wholly or in part, without the written consent of Prysmian Group. The information is believed to be correct at the time of issue. Prysmian Group reserves the right to amend this specification without prior notice. This specification is not contractually valid unless specifically authorised by Prysmian Group.



Cable-nominal-Ø	Cable Group*	Cable Type	Part Number
6	23	PVC	13-1009-1000
		FRNC	13-1096-1000

* see Cable Table Coaxial Cable



Video Cable 75 Ω



Application

Video cables are primarily used in closed circuit TV systems and in several studio applications for transmission of image signals.

Standards

For analogue and digital video signals (Composite, Component, SDI, SDV, SDTI, HDTV)

Flame resistance

PVC: IEC 60332-1
 FRNC: IEC 60332-1; IEC 60754-2; IEC 61034
 FRNC-C: IEC 60332-3-24 additionally

Construction

Inner conductor	solid copper wire, bare, diameter 0.8 mm	
Insulation	Foam-PE, diameter 3.7 mm	
Outer conductor	Al-PET-Al-foil under tinned copper braid, diameter 4.5 mm	
Sheath	FRNC, FRNC-C or PVC, diameter 5.9 mm green, RAL 6018	
Printing	FRNC	"DRAKA 0.8/3.7 AF - 75 Ω ± 1% - HDTV 5GHz - FRNC" + batch no. and meter marking
	FRNC-C	"DRAKA 0.8/3.7 AF - 75 Ω ± 1% - HDTV 5GHz - FRNC-C" + batch no. and meter marking
	PVC	"DRAKA 0.8/3.7 AF - 75 Ω ± 1% - HDTV 5GHz" + batch no. and meter marking

Electrical properties

at 20°C

DC resistance	Inner conductor	35 Ω/km
	Outer conductor	10 Ω/km
Mutual capacitance		56 pF/m
Characteristic impedance		75 Ω ± 0.75 Ω
Velocity ratio		78 %
Screening factor		≥ 100 dB

Electrical data

at 20°C

Attenuation (dB/100m)		Return loss (dB)	
Frequency (MHz)		Frequency (MHz)	
1	0.9	50 - 300	≥ 26
3	1.5	300 - 3000	≥ 22
5	1.9	3000 - 3500	≥ 18
10	2.7	3500 - 5000	≥ 15
30	4.4		
100	7.9		
200	10.9		
300	13.3		
500	17.6		
800	22.8		
1000	25.5		
1500	31.3		
2250	39.5		
3000	46.5		
3500	51.7		
4000	56.2		
4500	60.1		
5000	65.3		

Technical data

Product code	Type	Weight kg/km	Copper content	Standard delivery length m	Drum size KTG	Bending radius mm	Tensile force N	Storage
1002206 CT2850301	0.8/3.7 AF FRNC-C gn	49	25	1000	051	40	100	inside
1002151 CT2710800	0.8/3.7 AF PVC gn	49	25	1000	051	40	100	inside

© PRYSMIAN GROUP 2011, All Rights Reserved

All sizes and values without tolerances are reference values. Specifications are for product as supplied by Prysmian Group: any modification or alteration afterwards of product may give different result.

The information contained within this document must not be copied, reprinted or reproduced in any form, either wholly or in part, without the written consent of Prysmian Group. The information is believed to be correct at the time of issue. Prysmian Group reserves the right to amend this specification without prior notice. This specification is not contractually valid unless specifically authorised by Prysmian Group.



Cable-nominal-Ø	Cable Group*	Cable Type	Part Number
6	50	PVC	13-1126-1000
		FRNC	13-1055-1000

* see Cable Table Coaxial Cable



Video Cable 75 Ω



Application

Video cables are primary used in closed circuit TV systems and in several studio applications for transmission of image signals.

Standards

For analogue and digital video signals (Composite, Component, SDI, SDV, SDTI, HDTV)

Flame resistance

PVC: IEC 60332-1
 FRNC: IEC 60332-1; IEC 60754-2; IEC 61034
 FRNC-C: additionally IEC 60332-3 C

Construction

Inner conductor	solid copper wire, bare, diameter 1.0 mm
Insulation	Foam-PE, diameter 4.8 mm
Outer conductor	Al-PET-Al-foil under tinned copper braid, diameter 5.6 mm
Sheath	FRNC, PVC, PUR diameter 7.0 mm green, RAL 6018, blue, RAL 5015
Printing	for FRNC: DRAKA COMTEQ - 1.0/4.8 AF - 75 Ω \pm 1% - HDTV FRNC for PVC: DRAKA COMTEQ - 1.0/4.8 AF - 75 Ω \pm 1% - HDTV for PUR: DRAKA COMTEQ - 1.0/4.8 AF - 75 Ω \pm 1% - HDTV PUR

Electrical properties

at 20°C

DC resistance	Inner conductor	22 Ω /km
	Outer conductor	7 Ω /km
Mutual capacitance		56 pF/m
Characteristic impedance		75 Ω \pm 0.75 Ω
Velocity ratio		78 %
Screening factor		\geq 100 dB

Electrical data

at 20°C

Attenuation (dB/100m)		Return loss (dB)	
Frequency (MHz)		Frequency (MHz)	
1	0.8	50 - 300	≥ 26
3	1.3	300 - 3000	≥ 22
5	1.6	3000 - 3500	≥ 18
10	2.1	3500 - 5000	≥ 15
30	3.5		
100	6.2		
200	8.9		
300	11.3		
500	14.8		
800	18.5		
1000	20.7		
1500	24.9		
2250	31.7		
3000	37.3		
3500	41.5		
4000	47.2		
4500	51.2		
5000	55.1		

Technical data

Product code	Type	Weight kg/km	Standard delivery length m	Drum size KTG/ring	Copper content	Tensile force N	Bending radius mm	Storage
1002208 CT2850401	1.0/4.8 AF FRNC-C green	69	1000	071	35	140	45	inside

© PRYSMIAN GROUP 2011, All Rights Reserved

All sizes and values without tolerances are reference values. Specifications are for product as supplied by Prysmian Group: any modification or alteration afterwards of product may give different result.

The information contained within this document must not be copied, reprinted or reproduced in any form, either wholly or in part, without the written consent of Prysmian Group. The information is believed to be correct at the time of issue. Prysmian Group reserves the right to amend this specification without prior notice. This specification is not contractually valid unless specifically authorised by Prysmian Group.



Cable-nominal-Ø	Cable Group*	Cable Type	Part Number
7	51	FRNC	13-1027-1000

* see Cable Table Coaxial Cable



Video Cable 75 Ω



Application

Video cables are primary used in closed circuit TV systems and in several studio applications for transmission of image signals.

Standards

For analogue and digital video signals (Composite, Component, SDI, SDV, SDTI, HDTV)

Flame resistance

PVC: IEC 60332-1
 FRNC: IEC 60332-1; IEC 60754-2; IEC 61034
 FRNC-C: additionally IEC 60332-3 C

Construction

Inner conductor	solid copper wire, bare, diameter 1.4 mm
Insulation	Foam-PE, diameter 6.4 mm
Outer conductor	Al-PET-Al-foil under tinned copper braid, diameter 7.2 mm
Sheath	FRNC, PVC, PUR diameter 9.2 mm green, RAL 6018, blue, RAL 5015
Printing	for FRNC: DRAKA 1.4/6.6 AF - 75 Ω ± 1% HDTV 5GHz - FRNC for FRNC-C: DRAKA 1.4/6.6 AF - 75 Ω ± 1% HDTV 5GHz - FRNC-C for PVC: DRAKA 1.4/6.6 AF - 75 Ω ± 1% HDTV 5GHz for PUR: DRAKA 1.4/6.6 AF - 75 Ω ± 1% HDTV PUR + batch number + meter marking

Electrical properties

at 20°C

DC resistance	Inner conductor	12 Ω/km
	Outer conductor	5.3 Ω/km
Mutual capacitance		56 pF/m
Characteristic impedance		75 Ω ± 0.75 Ω
Velocity ratio		78 %
Screening factor		≥ 100 dB

Electrical data

at 20°C

Attenuation (dB/100m)		Return loss (dB)	
Frequency (MHz)		Frequency (MHz)	
1	0.5	50 – 300	≥ 26
3	0.8	300 – 3000	≥ 22
5	1.0	3000 – 3500	≥ 18
10	1.5	3500 – 5000	≥ 15
30	2.5		
100	4.5		
200	6.5		
300	9.0		
500	11.0		
800	14.1		
1000	15.8		
1500	19.6		
2250	26.3		
3000	30.2		
3500	34.8		
4000	38.1		
4500	41.0		
5000	44.0		

Technical data

Product code	Type	Weight kg/km	Standard delivery length m	Drum size KTG/ring	Copper content	Tensile force N	Bending radius mm	Storage
1002211 CT2850601	1.4/6.6 AF FRNC-C gn	109	1000	081	49	200	45	inside

© PRYSMIAN GROUP 2011, All Rights Reserved

All sizes and values without tolerances are reference values. Specifications are for product as supplied by Prysmian Group: any modification or alteration afterwards of product may give different result.

The information contained within this document must not be copied, reprinted or reproduced in any form, either wholly or in part, without the written consent of Prysmian Group. The information is believed to be correct at the time of issue. Prysmian Group reserves the right to amend this specification without prior notice. This specification is not contractually valid unless specifically authorised by Prysmian Group.



Cable-nominal-Ø	Cable Group*	Cable Type	Part Number
9	52	FRNC	13-1120-1000

* see Cable Table Coaxial Cable



Video Cable 75 Ω



Application

Video cables are primary used in closed circuit TV systems and in several studio applications for transmission of image signals.

Standards

For analogue and digital video signals (Composite, Component, SDI, SDV, SDTI, HDTV)

Flame resistance

PVC: IEC 60332-1
 FRNC: IEC 60332-1; IEC 60754-2; IEC 61034
 FRNC-C: additionally IEC 60332-3 C

Construction

Inner conductor	solid copper wire, bare, diameter 1.6 mm
Insulation	Foam-PE, diameter 7.3 mm
Outer conductor	Al-PET-Al-foil under tinned copper braid, diameter 8.2 mm
Sheath	FRNC, diameter 10.3 mm green, RAL 6018
Printing	for FRNC: DRAKA COMTEQ - 1.6/7.3 AF - 75 Ω ± 1% - HDTV FRNC for PVC: DRAKA COMTEQ - 1.6/7.3 AF - 75 Ω ± 1% - HDTV for PUR: DRAKA COMTEQ - 1.6/7.3 AF - 75 Ω ± 1% - HDTV PUR

Electrical properties

at 20°C

DC resistance	Inner conductor	9.5 Ω/km
	Outer conductor	4.3 Ω/km
Mutual capacitance		56 pF/m
Characteristic impedance		75 Ω ± 0.75 Ω
Velocity ratio		78 %
Screening factor		≥ 100 dB

Electrical data

at 20°C

Attenuation (dB/100m)		Return loss (dB)	
Frequency (MHz)		Frequency (MHz)	
1	0.4	50 - 300	≥ 26
3	0.7	300 - 3000	≥ 22
5	0.9	3000 - 3500	≥ 18
10	1.3	3500 - 5000	≥ 15
30	2.2		
100	3.9		
200	5.3		
300	7.0		
500	9.2		
800	11.8		
1000	13.2		
1500	16.9		
2250	22.0		
3000	26.4		
3500	30.6		
4000	36.1		
4500	38.1		
5000	41.3		

Technical data

Product code	Type	Weight kg/km	Standard delivery length m	Drum size KTG/ring	Copper content	Tensile force N	Bending radius mm	Storage
1002202 CT2760901	1.6/7.3 AF FRNC-C gn	135	1000	091	74.6	270	60	inside

© PRYSMIAN GROUP 2011, All Rights Reserved

All sizes and values without tolerances are reference values. Specifications are for product as supplied by Prysmian Group: any modification or alteration afterwards of product may give different result.

The information contained within this document must not be copied, reprinted or reproduced in any form, either wholly or in part, without the written consent of Prysmian Group. The information is believed to be correct at the time of issue. Prysmian Group reserves the right to amend this specification without prior notice. This specification is not contractually valid unless specifically authorised by Prysmian Group.



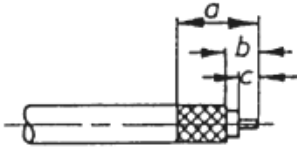
Cable nominal-Ø	Cable Group*	Cable Type	Part Number
11	60	FRNC	13-1069-1000

* see Cable Table Coaxial Cable

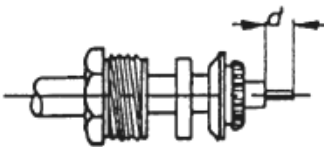


Montageanleitungen

BNC 75 Ohm



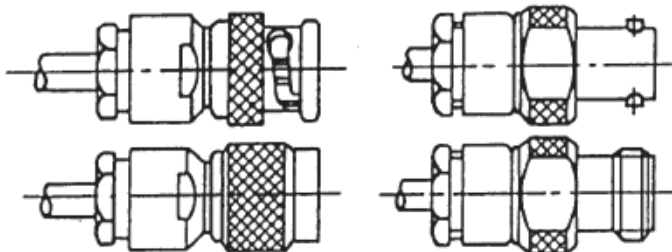
Strip the cable and comb out the screening braid.



Then slide the pressure screw, clamping ring and gasket onto the cable (clamping ring only till cable sheath) and bend back the screening braid over the clamping ring. Control dimension 'd'. Possibly cut the dielectric.

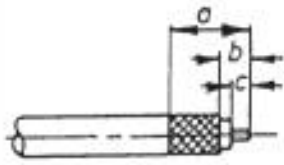


Temporary tin plating the Inner conductor. Slide the contact pin or contact socket as far as possible to the dielectric on the inner conductor and solder by the transverse hole. Remove excess solder.



Insert the cable as far as possible in the plug or socket connection and tighten the pressure screw.

Assembly Instruction 1	a	b	c	d
Inner conductor - solder connection	10	3.5	3.5	3.5
Outer conductor - clamp connection				



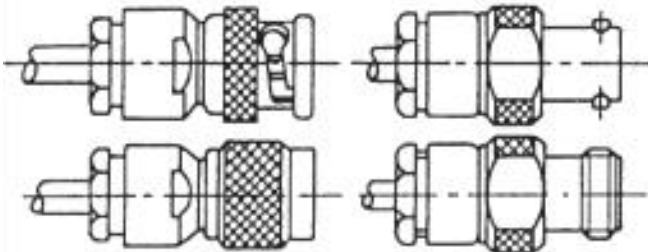
Strip the cable and comb out the screening braid.



Then slide the pressure screw, washer, gasket and clamping ring onto the cable (clamping ring only till cable sheath) and bend back the screening braid over the clamping ring. Control dimension 'd'. Possibly cut the dielectric.

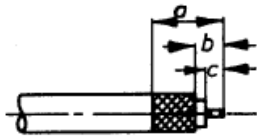


Temporary tin plating the inner conductor. Slide the contact pin or contact socket as far as possible to the dielectric on the inner conductor and solder by the transverse hole. Remove excess solder.

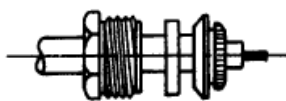


Insert the cable as far as possible in the plug or socket connection and tighten the pressure screw.

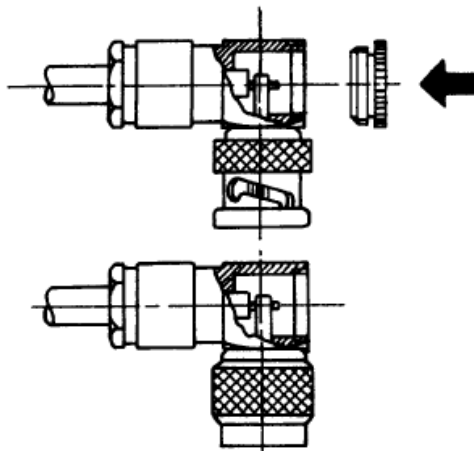
Assembly Instruction 2	a	b	c	d
Inner conductor - solder connection	7.5	3.5	3.5	3.5
Outer conductor - clamp connection				



Strip the cable and comb out the screening braid.

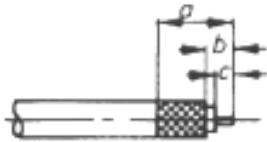


Then slide the pressure screw, washer, gasket and clamping ring onto the cable (clamping ring only till cable sheath) and bend back the screening braid over the clamping ring. Temporary tin plating the inner conductor.



Insert the cable as far as possible in the plug connection and tighten the pressure screw. Tin plating the inner conductor with the contact pin. Remove excess solder. Tightly screw the locking screw.

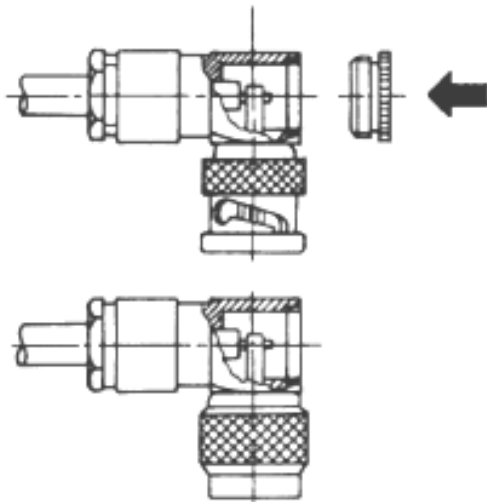
Assembly Instruction 3	a	b	c
Inner conductor - solder connection	10.5	4.0	3.0
Outer conductor - clamp connection			



Strip the cable and comb out the screening braid.

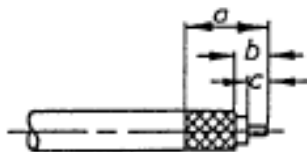


Then slide the pressure screw, washer, gasket and clamping ring onto the cable (clamping ring only till cable sheath) and bend back the screening braid over the clamping ring. Temporary tin plating the inner conductor.

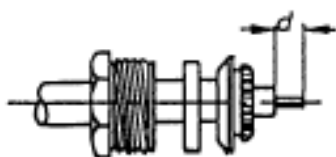


Insert the cable as far as possible in the plug connection and tighten the pressure screw. Tin plating the inner conductor with the contact pin. Remove excess solder. Tightly screw the locking screw.

Assembly Instruction 4	a	b	c
Inner conductor - solder connection	11.0	7.0	3.0
Outer conductor - clamp connection			



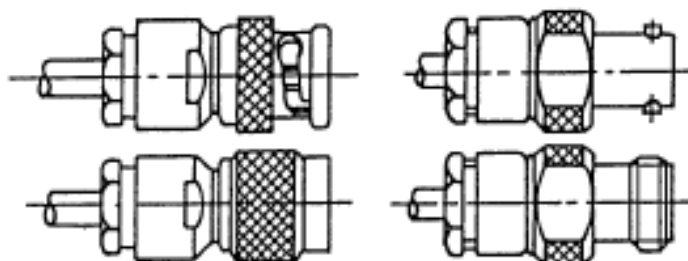
Strip the cable and comb out the screening braid.



Then slide the pressure screw, clamping ring and gasket onto the cable (clamping ring only till cable sheath) and bend back the screening braid over the clamping ring. Control dimension 'd'. Possibly cut the dielectric.

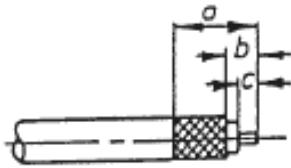


Temporary tin plating the Inner conductor. Slide the contact pin or contact socket as far as possible to the dielectric on the inner conductor and solder by the transverse hole. Remove excess solder.

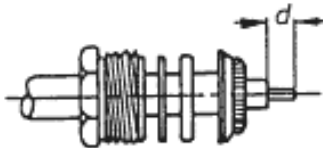


Insert the cable as far as possible in the plug or socket connection and tighten the pressure screw.

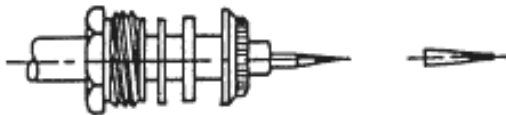
Assembly Instruction 5	a	b	c	d
Inner conductor - solder connection	11.5	5.0	3.5	3.5
Outer conductor - clamp connection				



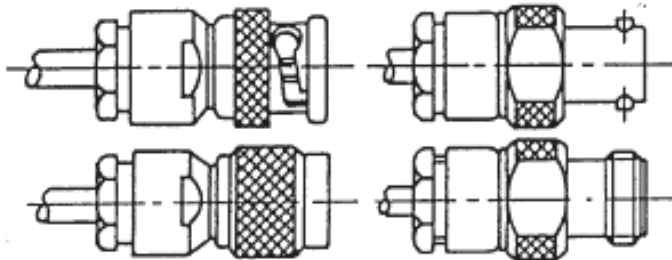
Strip the cable and comb out the screening braid.



Then slide the pressure screw, washer, clamping ring and gasket onto the cable (clamping ring only till cable sheath) and bend back the screening braid over the clamping ring. Control dimension 'd'. Possibly cut the dielectric.

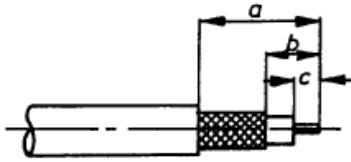


Temporary tin plating the Inner conductor. Slide the contact pin or contact socket as far as possible to the dielectric on the inner conductor and solder by the transverse hole. Remove excess solder.

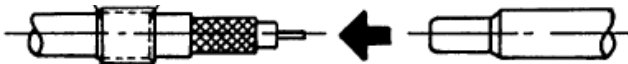


Insert the cable as far as possible in the plug or socket connection and tighten the pressure screw.

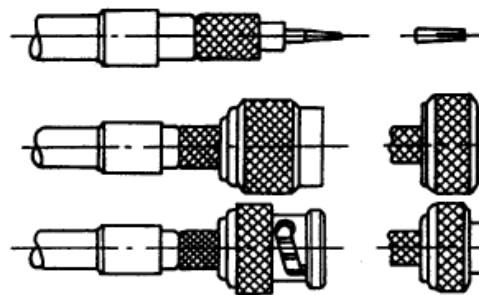
Assembly Instruction 6	a	b	c	d
Inner conductor - solder connection	9.0	5.0	3.5	3.5
Outer conductor - clamp connection				



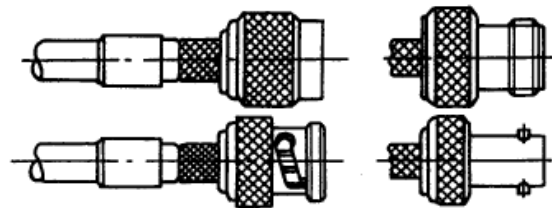
Strip the cable.



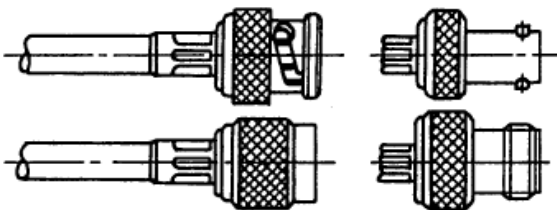
Slide the clamping sleeve over the cable and use the expanding mandrel to widen the screening braid.



Slide the contact pin or contact socket as far as the dielectric on the inner conductor and crimp, using the crimping pliers.



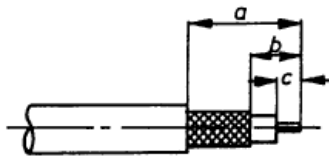
Insert the cable in the plug or socket connection until the contact pin or contact socket can be felt to engage. Then slide the clamping sleeve over the screening braid.



Place the plug or socket with the cable in the crimping pliers so that the plug or socket body is positioned at the press-in indentation, then crimp.

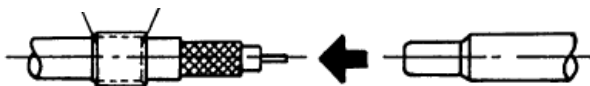
Attention:
Note to press the crimping pliers completely, to open the built opening-lock.

Assembly Instruction 8	a	b	c
Crimp connection	15.0	6.5	4.0

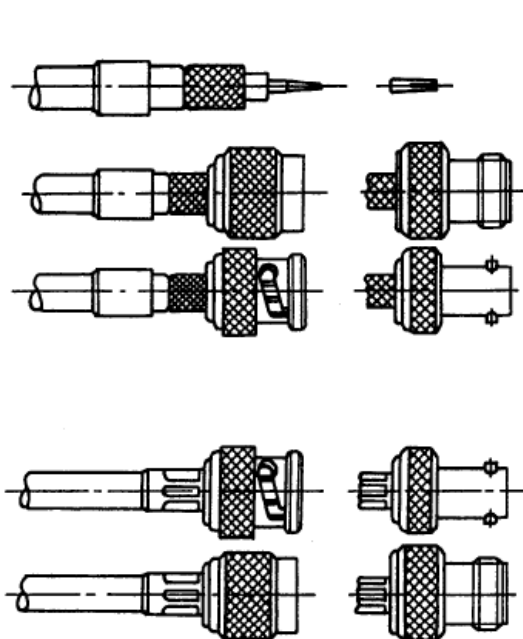


Strip the cable.

chamfer sagging



Slide the clamping sleeve over the cable and use the expanding mandrel to widen the screening braid.



Slide the contact pin or contact socket as far as the dielectric on the inner conductor and crimp, using the crimping pliers.

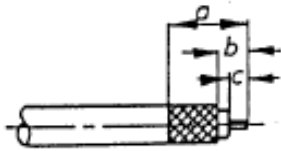
Insert the cable in the plug or socket connection until the contact pin or contact socket can be felt to engage. Then slide the clamping sleeve over the screening braid.

Place the plug or socket with the cable in the crimping pliers so that the plug or socket body is positioned at the press-in indentation, then crimp.

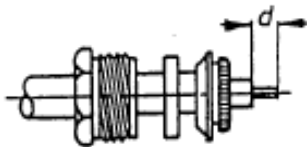
Attention:

Note to press the crimping pliers completely, to open the built opening-lock.

Assembly Instruction 8	a	b	c
Crimp connection	18.0	9.5	4.0



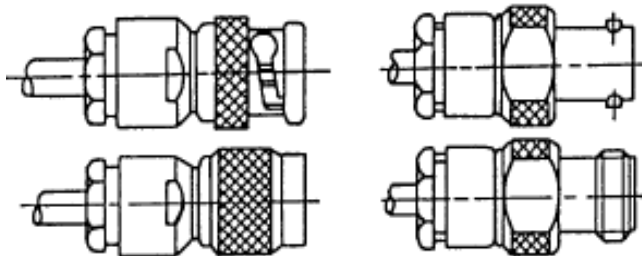
Strip the cable.



Then slide the pressure screw, gasket and clamping ring onto the cable (clamping ring only till cable sheath) and bend back the screening braid over the clamping ring. Control dimension 'd'. Possibly cut the dielectric.

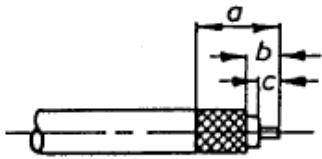


Temporary tin plating the inner conductor. Slide the contact pin or contact socket as far as possible to the dielectric on the inner conductor and solder by the transverse hole. Remove excess solder.

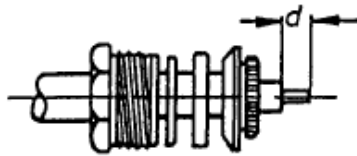


Insert the cable as far as possible in the plug or socket connection and tighten the pressure screw.

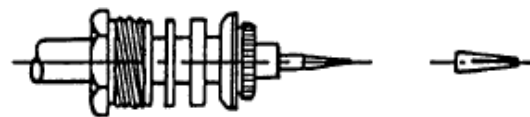
Assembly Instruction 9	a	b	c	d
Inner conductor - solder connection	10.0	3.5	0	4.5
Outer conductor - clamp connection				



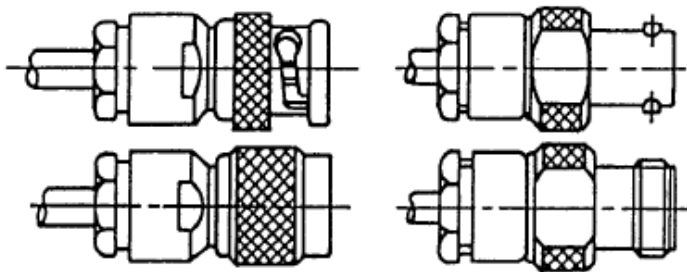
Strip the cable and comb out the screening braid.



Then slide the pressure screw, washer, gasket and clamping ring onto the cable (clamping ring only till cable sheath) and bend back the screening braid over the clamping ring. Control dimension 'd'. Possibly cut the dielectric.

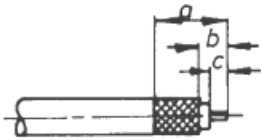


Temporary tin plating the inner conductor. Slide the contact pin or contact socket as far as possible to the dielectric on the inner conductor and solder by the transverse hole. Remove excess solder.

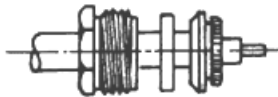


Insert the cable as far as possible in the plug or socket connection and tighten the pressure screw.

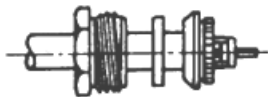
Assembly Instruction 10	a	b	c	d
Inner conductor - solder connection	11.5	5	3.5	3.5
Outer conductor - clamp connection				



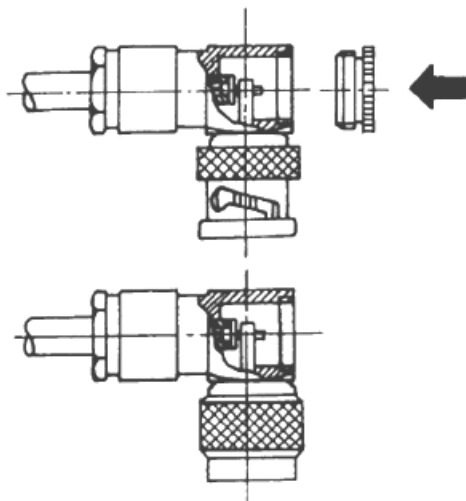
Strip the cable and comb out the screening braid.



Then slide the pressure screw, washer, gasket and clamping ring onto the cable (clamping ring only till cable sheath) and bend back the screening braid over the clamping ring. Temporary tin plating the inner conductor.

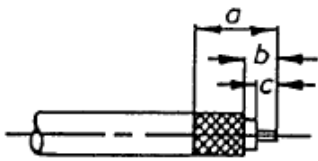


Slide the insulating socket as far as possible to the dielectric on the inner conductor.

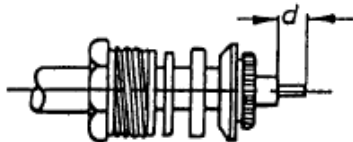


Insert the cable as far as possible in the plug or socket connection and tighten the pressure screw. Remove excess solder. Tightly screw the locking screw.

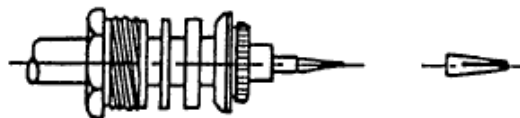
Assembly Instruction 11	a	b	c
Inner conductor - solder connection	10.5	4.0	4.0
Outer conductor - clamp connection			



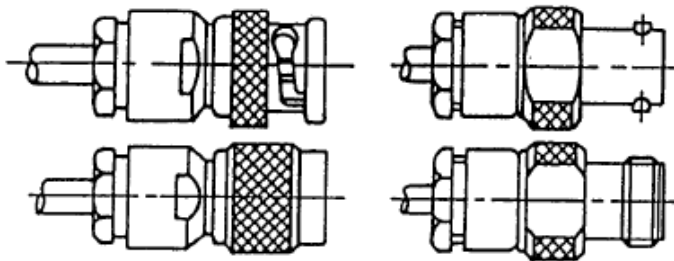
Strip the cable and comb out the screening braid.



Then slide the pressure screw, washer, gasket and clamping ring onto the cable (clamping ring only till cable sheath) and bend back the screening braid over the clamping ring. Control dimension 'd'. Possibly cut the dielectric.

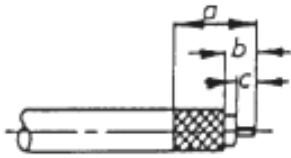


Temporary tin plating the inner conductor. Slide the contact pin or contact socket as far as possible to the dielectric on the inner conductor and solder by the transverse hole. Remove excess solder.

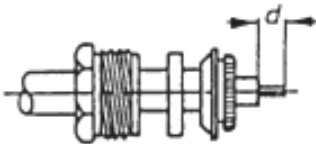


Insert the cable as far as possible in the plug or socket connection and tighten the pressure screw.

Assembly Instruction 12	a	b	c	d
Inner conductor - solder connection	10.0	3.5	3.5	3.5
Outer conductor - clamp connection				



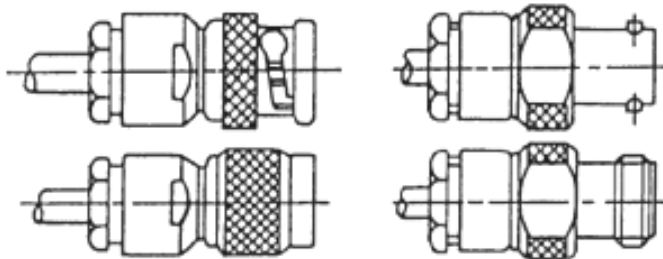
Strip the cable and comb out the screening braid.



Then slide the pressure screw, washer, gasket and clamping ring onto the cable (clamping ring only till cable sheath) and bend back the screening braid over the clamping ring. Control dimension 'd'. Possibly cut the dielectric.



Temporary tin plating the inner conductor. Slide the contact pin or contact socket as far as possible to the dielectric on the inner conductor and solder by the transverse hole. Remove excess solder.



Insert the cable as far as possible in the plug or socket connection and tighten the pressure screw.

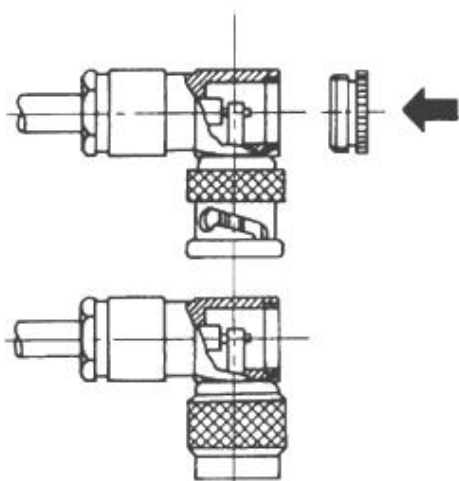
Assembly Instruction 13	a	b	c	d
Inner conductor - solder connection	11.5	5.0	4.5	4.5
Outer conductor - clamp connection				



Strip the cable and comb out the screening braid.

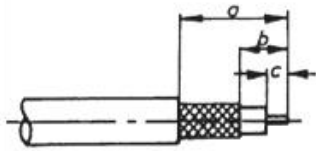


Then slide the pressure screw, washer, gasket and clamping ring onto the cable (clamping ring only till cable sheath) and bend back the screening braid over the clamping ring. Temporary tin plating the inner conductor.



Insert the cable as far as possible in the plug connection and tighten the pressure screw. Tin plating the inner conductor with the contact pin. Remove excess solder. Tightly screw the locking screw.

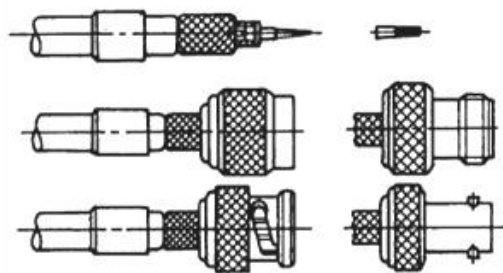
Assembly Instruction 4	a	b	c
Inner conductor - solder connection	10.5	4.0	3.0
Outer conductor - clamp connection			



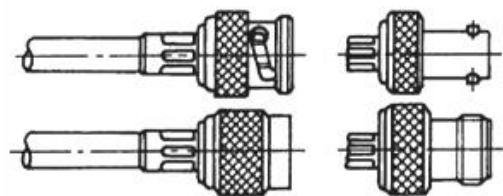
Srip the cable.



Slide the clamping sleeve over the cable and use the expanding mandrel to widen the screening braid.



Slide the contact pin or contact socket as far as the dielectric on the inner conductor and crimp, using the crimping pliers.

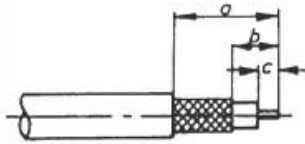


Insert the cable in the plug or socket connection until the contact pin or contact socket can be felt to engage. Then slide the clamping sleeve over the screening braid.

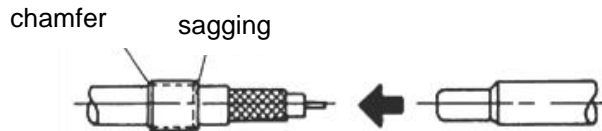
Place the plug or socket with the cable in the crimping pliers so that the plug or socket body is positioned at the press-in indentation, than crimp.

Attention:
Note to press the crimping pliers completely, to open the built opening-lock.

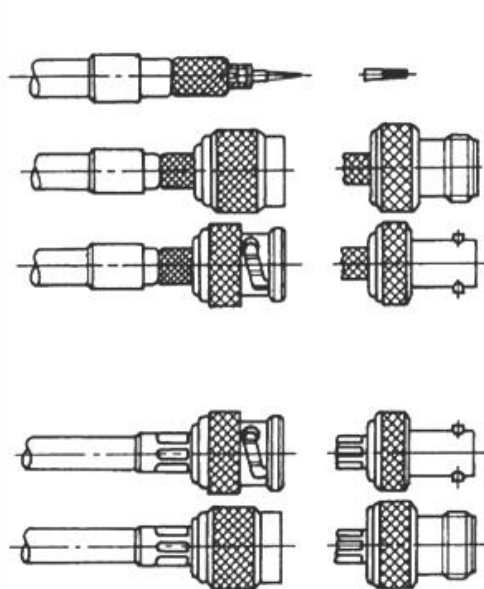
Assembly Instruction 15	a	b	c
Crimp connection	15.0	6.5	5.0



Strip the cable.



Slide the clamping sleeve over the cable and use the expanding mandrel to widen the screening braid.



Slide the contact pin or contact socket as far as the dielectric on the inner conductor and crimp, using the crimping pliers.

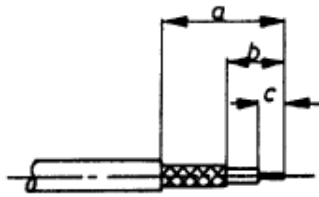
Insert the cable in the plug or socket connection until the contact pin or contact socket can be felt to engage. Then slide the clamping sleeve over the screening braid.

Place the plug or socket with the cable in the crimping pliers so that the plug or socket body is positioned at the press-in indentation, then crimp.

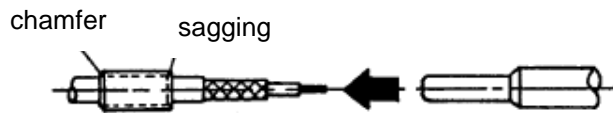
Attention:

Note to press the crimping pliers completely, to open the built opening-lock.

Assembly Instruction 16	a	b	c
Crimp connection	18.0	9.5	5.0



Strip the cable.



Slide the clamping sleeve over the cable and use the expanding mandrel to widen the screening braid.



Slide the insulating socket as far as possible to the dielectric on the inner conductor.



Slide the contact pin or contact socket as far as the dielectric on the inner conductor and crimp, using the crimping pliers.



Insert the cable in the plug or socket connection until the contact pin or contact socket can be felt to engage. Then slide the clamping sleeve over the screening braid.



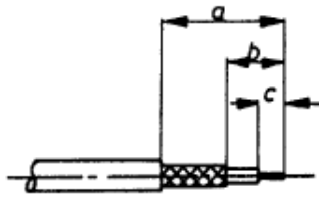
Place the plug or socket with the cable in the crimping pliers so that the plug or socket body is positioned at the press-in indentation, then crimp.



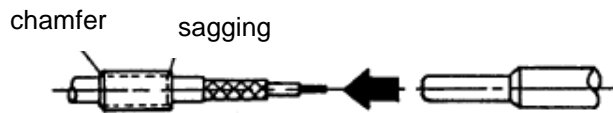
Attention:
Note to press the crimping pliers completely, to open the built opening-lock.



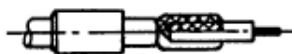
Assembly Instruction 23	a	b	c
Crimp connection	15.0	4.0	4.0



Strip the cable.



Slide the clamping sleeve over the cable and use the expanding mandrel to widen the screening braid.



Slide the contact pin or contact socket as far as possible to the dielectric under the braiding.



Slide the contact pin or contact socket as far as the dielectric on the inner conductor and crimp, using the crimping pliers.



Insert the cable in the plug or socket connection until the contact pin or contact socket can be felt to engage. Then slide the clamping sleeve over the screening braid.



Place the plug or socket with the cable in the crimping pliers so that the plug or socket body is positioned at the press-in indentation, then crimp.



Attention:
Note to press the crimping pliers completely, to open the built opening-lock.



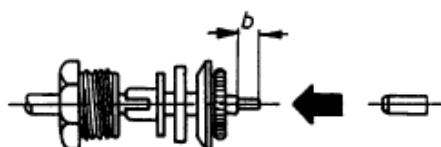
Assembly Instruction 24	a	b	c
Crimp connection	18.0	7.0	4.0



Strip the cable.



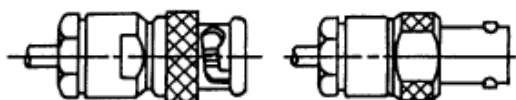
Then slide the pressure screw, washer, gasket and clamping ring onto the cable (clamping ring only till cable sheath). Use the expanding mandrel to widen the screening braid.



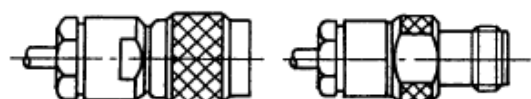
Bend back the screening braid over the clamping ring. Cut the dielectric to dimension 'b' and slide the insulating socket under the braiding on the dielectric.



Temporary tin plating the inner conductor. Slide the contact pin or contact socket as far as possible to the dielectric on the inner conductor and solder by the transverse hole. Remove excess solder.



Insert the cable as far as possible in the plug or socket connection and tighten the pressure screw.



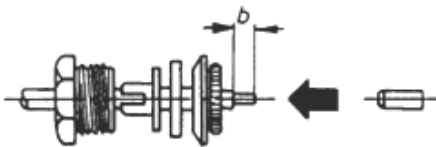
Assembly Instruction 25	a	b
Inner conductor - solder connection Outer conductor - clamp connection	10.0	3.5



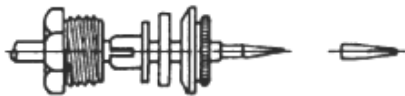
Strip the cable.



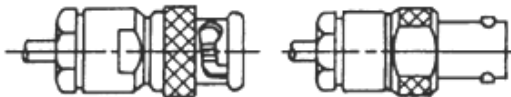
Then slide the pressure screw, washer, gasket and clamping ring onto the cable (clamping ring only till cable sheath). Use the expanding mandrel to widen the screening braid.



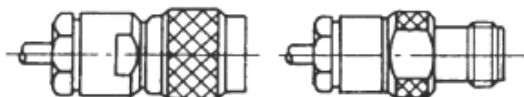
Bend back the screening braid over the clamping ring. Cut the dielectric to dimension 'b' and slide the insulating socket under the braiding on the dielectric.



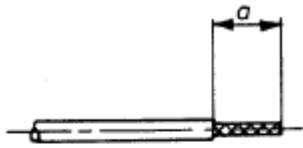
Temporary tin plating the inner conductor. Slide the contact pin or contact socket as far as possible to the dielectric on the inner conductor and solder by the transverse hole. Remove excess solder.



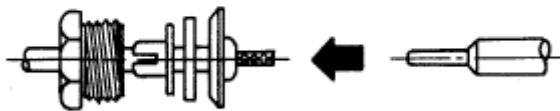
Insert the cable as far as possible in the plug or socket connection and tighten the pressure screw.



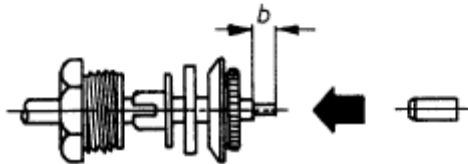
Assembly Instruction 26	a	b
Inner conductor - solder connection Outer conductor - clamp connection	11.5	3.5



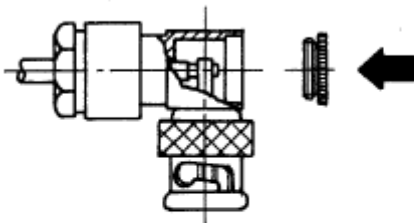
Strip the cable.



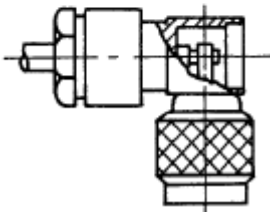
Then slide the pressure screw, washer, gasket and clamping ring onto the cable (clamping ring only till cable sheath). Use the expanding mandrel to widen the screening braid.



Bend back the screening braid over the clamping ring. Cut the dielectric to dimension 'b' and slide the insulating socket under the braiding on the dielectric.



Temporary tin plating the inner conductor. Slide the contact pin or contact socket as far as possible to the dielectric on the inner conductor and solder by the transverse hole. Remove excess solder. Tightly screw the locking screw.



Assembly Instruction 27	a	b
Inner conductor - solder connection	11.0	3.0
Outer conductor - clamp connection		

Cable Table Coaxial Cable sorted by cable type

1/2

Cable type	Cable Group	Ø
0.3/1.95D/3.7 ²	63	4
0.3L/1.85/3	55	3
0.36L/1.5/2.8	79	3
0.4/2/3.6	56	4
0.4/2.5D/4.8 Draka ²	47	5
0.41/1.9AF/3.1 Draka	74	4
0.45/1.95AF/3.4	76	4
0.45/2/3.6	56	4
0.5/2.3/3.9	45	4
0.5/3.0D/5.6 ²	70	6
0.5L/2.6/3.9	45	4
0.54L/2.2/3.5	76	4
0.54L/2.3/3.1 Leoni	67	4
0.58/2.6 AF/4.0	71	4
0.58/2.6(2 AF)D/4.7	83	5
0.6/1.2/2	53	2
0.6/2.8/5	19	5
0.6/2.8 AF Draka	42	5
0.6/2.8 AF/6.1	32	6
0.6/3.7	23	6
0.6/3.7/6.7 Sony	69	6
0.6/3.7/6.8	38	7
0.6/3.7D/8.6 Siemens ²	62	9
0.6/4.0/8 (93Ω)	57	8
0.6L/3.7D/7 ²	38	7
0.64L/2.8/3.9 Raychem	41	4
0.7/4.5/6.7 Pope	37	6
0.7L/4.3/6.4	54	6
0.75L/3.2/4.5 Perivox	61	5
0.75L/3.2/6.0 Perivox	73	6
0.75L/3.2 AF/4.4 Leoni	88	5
0.75L/3.2 AF/4.8	84	5
0.78L/4.9/7.6 Canare	65	7
0.8/3.7/6	50	6
0.8/3.7 AF Draka	50	6
0.8/3.7 AF/7.3	33	7
0.8/3.7D ²	50	6
0.8L/3.7D ²	50	6
0.8/4.9D ²	11	7
0.95/4.8/7 ³	51	7
1.0/4.8/7 ³	51	7
1.0/4.8 AF Draka	51	7
1.0/4.8 AF/8.6	34	9

Cable type	Cable Group	Ø
1.0L/2.95/4.1	48	4
1.0L/4.8D Draka ²	51	7
1.0/6.6	13	9
1.0/6.6D/10.1 ²	36	11
1.13/4.8/6.6 (Wisi MK 90)	58	7
1.13/4.8/7	58	7
1.2L/4.8D/7.3 Draka ²	58	7
1.2L/4.95 AF Draka	58	7
1.4/6.6 AF Draka	52	9
1.4/6.6 AF/10.4	35	11
1.4L/3.7/5.5 Alcatel	72	6
1.45L/6.3D/9.3 Siemens ²	66	9
1.6/7.2/10	60	11
1.6/7.3 AF Draka	60	11
1.6/7.5/10.4	43	11
1.9/6.9CuF/10.4	80	11
1.9L/4.9CuF/7.3	78	7
2.7/7.3 AF	68	11
RG-Cable		
RG-5B	14	9
RG-6A	12	8
RG-6A mit Ø 8,7	77	9
RG-8A	27	11
RG-9B	27	11
RG-11A	28	11
RG-13A	28	11
RG-55	5	5
RG-55A	5	5
RG-55B	5	5
RG-58	5	5
RG-58A	5	5
RG-58C	5	5
RG-59	23	6
RG-59A	23	6
RG-59B	23	6
RG-62	8	6
RG-62A	8	6
RG-62B	8	6
RG-62C	8	6
RG-63B	29	11
RG-71	23	6
RG-71A	23	6
RG-71B	23	6

Cable Table Coaxial Cable sorted by cable type

2/2

Cable type	Cable Group	Ø
RG-115A	27	11
RG-122	3	4
RG-133	29	11
RG-140	23	6
RG-141	5	5
RG-141A	5	5
RG-142	5	5
RG-142A	5	5
RG-142B	5	5
RG-143A	14	9
RG-144	60	11
RG-149	28	11
RG-161	2	3
RG-165	27	11
RG-174	1	3
RG-178A	2	3
RG-178B	46	2
RG-179A	1	3
RG-179B	2	3
RG-179DT ³	79	3
RG-180	4	4
RG-180A	4	4
RG-180B	4	4
RG-187A	2	3
RG-188A	1	3
RG-195	4	4
RG-195A	4	4
RG-196A	46	2
RG-210	8	6
RG-212	14	9
RG-213	27	11
RG-214	27	11
RG-216	28	11
RG-21A	14	9
RG-222	14	9
RG-223	64	5
RG-225	27	11
RG-302	23	6
RG-303	5	5
RG-304	22	7
RG-316	1	3

Cable type	Cable Group	Ø
Beldencable		
1406B ³	75	4
1505A ³	50	6
1505ANH ³	50	6
1505F ³	50	6
1520A ³	2	3
1521A ³	2	3
1522A ³	2	3
1694A ³	51	7
1694ANH ³	50	6
1694F ³	51	7
1794A ³	87	8
1855A ³	71	4
1855ENH ³	42	5
1865A ³	45	4
43187 ²⁺³	38	7
46067 ³	23	6
46899 ³	42	5
7710A ³	51	7
7711A ³	51	7
7712A ³	51	7
7713A ³	51	7
7731A ³	60	11
7731ANH ³	60	11
7796A ³	50	6
8213 ³	60	11
8238 ³	60	11
8241 ²⁺³	23	6
8281 ²⁺³	12	8
9244 ³	23	6
9248 ³	51	7
9259 ³	50	6
9265 ³	50	6

² two braids cable

³ Beldencable

Classification by dimensions – not by wave impedance

Cable Table Coaxial Cable sorted by cable-Ø

1/2

Cable type	Cable Group	Ø	Cable type	Cable Group	Ø	
RG-178B	46	2	RG-58C	5	5	
RG-196A			RG-141			
0.6/1.2/2	53	RG-141A				
RG-174	1	RG-142				
RG-179A		RG-142A				
RG-188A		RG-142B				
RG-316		RG-303				
RG-161	2	3	0.6/2.8/5			19
RG-178A			0.6/2.8 AF Draka			42
RG-179B			1855ENH ³			
RG-187A			46899 ³			
1520A ³			0.4/2.5D/4.8 Draka ²	47		
1521A ³			0.75L/3.2/4.5 Perivox	61		
1522A ³			RG-223	64		
0.3L/1.85/3			55	0.58/2.6(2 AF)D/4.7	83	
0.36L/1.5/2.8			79	0.75L/3.2 AF/4.8	84	
RG-179DT ³			3	4	0.75L/3.2 AF/4.4 Leoni	88
RG-122	3	RG-62			8	
RG-180	4	RG-62A				
RG-180A		RG-62B				
RG-180B		RG-62C				
RG-195		RG-210				
RG-195A		0.6/3.7			23	
0.64L/2.8/3.9 Raychem	41	RG-59				
0.5/2.3/3.9	45	RG-59A				
0.5L/2.6/3.9		RG-59B				
1865A ³	48	RG-71	6			
1.0L/2.95/4.1		RG-71A				
0.4/2/3.6		56		RG-71B		
0.45/2/3.6		63		RG-140		
0.3/1.95D/3.7 ²				RG-302		
0.54L/2.3/3.1 Leoni		67		46067 ³		
0.58/2.6 AF/4.0		71		8241 ²⁺³		
1855A ³				9244 ³		
0.41/1.9AF/3.1 Draka		74		0.6/2.8 AF/6.1	32	
1406B ³		75		0.7/4.5/6.7 Pope	37	
0.45/1.95AF/3.4	76	0.8/3.7/6	50			
0.54L/2.2/3.5		0.8/3.7 AF Draka				
RG-55	5	0.8/3.7D ²				
RG-55A		0.8L/3.7D ²				
RG-55B		1505A ³				
RG-58		1505ANH ³				
RG-58A		1505F ³				

Cable Table Coaxial Cable sorted by cable-Ø

2/2

Cable type	Cable Group	Ø
1694ANH ³	50	6
7796A ³		
9259 ³		
9265 ³		
0.7L/4.3/6.4	54	
0.6/3.7/6.7 Sony	69	
0.5/3.0D/5.6 ²	70	
1.4L/3.7/5.5 Alcatel	72	
0.75L/3.2/6.0 Perivox	73	
0.8/4.9D ²	11	
RG-304	22	
0.8/3.7 AF/7.3	33	
0.6/3.7/6.8	38	7
0.6L/3.7D/7 ²		
43187 ²⁺³	51	
0.95/4.8/7 ³		
1.0/4.8/7 ³		
1.0/4.8 AF Draka		
1.0L/4.8D Draka ²		
1694A ³		
1694F ³	58	
7710A ³		
7711A ³		
7712A ³		
7713A ³		
9248 ³		
1.13/4.8/6.6 (Wisi MK 90)	65	
1.13/4.8/7		
1.2L/4.8D/7.3 Draka ²		
1.2L/4.95 AF Draka		
0.78L/4.9/7.6 Canare	78	
1.9L/4.9CuF/7.3	12	8
RG-6A		
8281 ²⁺³		
0.6/4.0/8 (93Ω)		
1794A ³	57	
1.0/6.6	87	
1.0/6.6	13	9
RG-5B		
RG-143A		
RG-212		
RG-21A		
RG-222		

Cable type	Cable Group	Ø
1.0/4.8 AF/8.6	34	9
1.4/6.6 AF Draka	52	
0.6/3.7D/8.6 Siemens ²	62	
1.45L/6.3D/9.3 Siemens ²	66	
RG-6A mit Ø 8,7	77	
RG-8A	27	11
RG-9B		
RG-115A		
RG-165		
RG-213		
RG-214		
RG-225		
RG-11A	28	
RG-13A		
RG-149		
RG-216	29	
RG-63B		
RG-133		
1.4/6.6 AF/10.4	35	
1.0/6.6D/10.1 ²	36	
1.6/7.5/10.4	43	
1.6/7.2/10	60	
1.6/7.3 AF Draka		
RG-144		
7731A ³		
7731ANH ³		
8213 ³		
8238 ³		
2.7/7.3 AF	68	
1.9/6.9CuF/10.4	80	

² two braids cable

³ Beldencable

Classification by dimensions – not by wave impedance



List of Part Numbers

1/5

Part Number	Page	Part Number	Page	Part Number	Page
1-1177-2100	9	1-1218-2120	15	1-1300-2144	28
1-1178-2100	9	1-1219-2110	12	1-1343-2144	29
1-1179-2100	9	1-1220-2140	19	1-1346-1245	30
1-1180-2100	9	1-1221-2140	19	1-1347-2150	36
1-1181-2100	9	1-1222-2140	19	1-1348-2153	37
1-1182-2100	9	1-1223-2140	19	1-1353-2174	39
1-1183-2100	8	1-1224-2140	19	1-1396-3030	45
1-1184-2100	8	1-1225-2140	19	1-1435-2142	22/23
1-1185-2100	8	1-1226-2140	18	1-1436-2142	22/23
1-1186-2100	8	1-1227-2140	18	1-1449-2144	29
1-1187-2100	9	1-1228-2140	18	1-2240-2100	9
1-1189-2100	8	1-1229-2140	18	1-2241-2100	9
1-1190-2100	8	1-1230-2140	19	1-2242-2100	8
1-1191-2100	8	1-1232-2140	18	1-2243-2100	8
1-1192-2100	9	1-1233-2140	18	1-2244-2101	11
1-1193-2100	8	1-1234-2140	18	1-2245-2101	11
1-1194-2100	8	1-1235-2140	19	1-2246-2101	10
1-1195-2100	8	1-1236-2140	18	1-2247-2101	10
1-1196-2100	9	1-1237-2140	18	1-2248-2140	19
1-1197-2101	11	1-1238-2140	18	1-2249-2140	19
1-1198-2101	11	1-1239-2140	19	1-2250-2140	18
1-1199-2101	11	1-1240-2142	22/23	1-2251-2140	18
1-1200-2101	11	1-1241-2142	22/23	1-2252-2142	22/23
1-1201-2101	11	1-1242-2142	22/23	1-2253-2142	22/23
1-1202-2101	11	1-1243-2142	22/23	1-2254-2142	20/21
1-1203-2101	10	1-1244-2142	22/23	1-2255-2142	20/21
1-1204-2101	10	1-1245-2142	22/23	1-2385-2174	40
1-1205-2101	10	1-1252-2142	20/21	1-2434-2100	8
1-1206-2101	10	1-1253-2142	20/21	1-2457-2100	8
1-1207-2101	11	1-1254-2142	20/21	1-2503-2100	8
1-1209-2101	10	1-1255-2142	20/21	1-2624-2120	16
1-1210-2101	10	1-1256-2142	22/23	1-2627-2120	15
1-1211-2101	10	1-1258-2142	20/21	1-2630-2100	9
1-1212-2101	11	1-1259-2142	20/21	1-2667-2140	18
1-1213-2101	10	1-1261-2142	20/21	1-2691-2120	17
1-1214-2101	10	1-1262-2142	20/21	1-2696-2120	16
1-1215-2101	10	1-1263-2142	20/21	1-2731-2144	26
1-1216-2101	11	1-1264-2142	20/21	1-3053-3030	44
1-1217-2120	15	1-1299-2144	26	1-3055-2131	13



List of Part Numbers

2/5

Part Number	Page	Part Number	Page	Part Number	Page
1-3106-3030	44	1-4064-2100	8	1-6680-2153	38
1-3257-2120	15	1-4065-2101	11	1-6681-2153	38
1-3262-2120	15	1-4066-2101	10	1-6682-2153	38
1-3265-2145	30	1-4067-2140	19	1-6683-2153	38
1-3326-2143	24/25	1-4068-2140	18	1-8118-2144	28
1-3327-2143	24/25	1-4069-2140	18	1-8119-2153	38
1-3328-2143	24/25	1-4070-2140	18	1-8368-2140	18
1-3329-2143	24/25	1-4071-2142	22/23	1-8521-13112	14
1-3330-2143	24/25	1-4072-2142	20/21	1-8522-13112	14
1-3331-2143	24/25	1-4073-2142	20/21	1-8523-13112	14
1-3333-2143	24/25	1-4084-2101	10	1-8524-13112	14
1-3334-2143	24/25	1-4219-2171	41	1-8525-13112	14
1-3335-2143	24/25	1-4230-2144	28	1-8526-13112	14
1-3336-2143	24/25	1-4231-2144	28	1-8527-13112	14
1-3337-2143	24/25	1-4232-2144	28	1-8528-13112	14
1-3338-2143	24/25	1-4233-2144	28	1-8529-13112	14
1-3453-2153	37	1-4234-2144	28	1-8530-13112	14
1-3458-2930	44	1-4235-2144	28	1-8531-13112	14
1-3459-2930	44	1-4236-2144	28	1-8532-13112	14
1-3539-2101	10	1-4237-2144	28	1-8533-13112	14
1-3540-2140	19	1-4238-2144	28	1-8534-13112	14
1-3563-2144	27	1-4239-2144	28	1-8535-13112	14
1-3688-2100	8	1-4490-2144	29	1-8536-13112	14
1-3699-2144	33	1-4698-2144	29	1-8537-13112	14
1-3700-2144	32	1-4699-2100	8		
1-3701-2145	35	1-4884-2145	30	2-1051-7463	61
1-3702-2145	34	1-5075-2144	29	2-1052-7463	61
1-3838-2144	33	1-5126-2100	8	2-1055-7463	60
1-3839-2144	32	1-5127-2101	10	2-1056-7463	60
1-3840-2145	35	1-5128-2140	18	2-1482-3331	55
1-3841-2145	34	1-5129-2142	20/21	2-1483-3331	55
1-3921-2910	43	1-6167-2153	38	2-1484-3331	55
1-3922-2930	43	1-6268-2145	30	2-1485-3331	55
1-3923-2930	43	1-6674-2153	38	2-1486-3331	55
1-3924-2950	43	1-6675-2153	38	2-1487-3331	55
1-3943-2100	8	1-6676-2153	38	2-1488-3331	55
1-3944-2142	20/21	1-6677-2153	38	2-1489-3331	55
1-3945-2101	10	1-6678-2153	38	2-1490-3331	55
1-4063-2100	9	1-6679-2153	38	2-1491-3331	55



List of Part Numbers

3/5

Part Number	Page	Part Number	Page	Part Number	Page
2-1492-3331	55	2-1531-3331	56	2-2993-2494	59
2-1493-3331	55	2-1855-9200	54	2-2994-2494	59
2-1494-3331	55	2-1887-9200	53	2-5334-3331	55
2-1495-3331	55	2-2580-9200	54	2-5335-3331	55
2-1496-3331	55	2-2581-9200	54	2-5336-3331	55
2-1497-3331	55	2-2582-9200	54	2-5337-3331	56
2-1498-3331	55	2-2583-9200	54	2-5338-3331	56
2-1499-3331	55	2-2584-9200	54	2-5339-3331	56
2-1500-3331	55	2-2585-9200	54	2-5356-3331	57
2-1501-3331	55	2-2586-9200	54	2-5357-3331	57
2-1502-3331	56	2-2587-9200	54	2-5358-3331	57
2-1503-3331	56	2-2588-9200	54	2-5359-3331	57
2-1504-3331	56	2-2598-9200	53	2-5360-3331	57
2-1505-3331	56	2-2599-9200	53	2-5361-3331	57
2-1506-3331	56	2-2600-9200	53	2-5362-3331	57
2-1507-3331	56	2-2601-9200	53	2-5363-3331	57
2-1508-3331	56	2-2602-9200	53	2-5364-3331	57
2-1509-3331	56	2-2603-9200	53	2-5365-3331	57
2-1510-3331	56	2-2604-9200	53	2-5366-3331	57
2-1511-3331	56	2-2605-9200	53	2-5367-3331	57
2-1512-3331	56	2-2606-9200	53	2-5368-3331	57
2-1513-3331	56	2-2799-3331	55	2-5369-3331	57
2-1514-3331	56	2-2800-3331	55	2-5370-3331	57
2-1515-3331	56	2-2801-3331	55	2-5371-3331	57
2-1516-3331	56	2-2802-3331	55	2-5372-3331	57
2-1517-3331	56	2-2803-3331	55	2-5373-3331	57
2-1518-3331	56	2-2804-3331	55	2-5374-3331	57
2-1519-3331	56	2-2805-3331	55	2-5375-3331	57
2-1520-3331	56	2-2806-3331	55	2-5376-3331	57
2-1521-3331	56	2-2807-3331	55	2-5377-3331	57
2-1522-3331	56	2-2808-3331	55	2-5423-2494	59
2-1523-3331	56	2-2985-2494	59	2-5490-9200	54
2-1524-3331	56	2-2986-2494	59	2-5492-9200	53
2-1525-3331	56	2-2987-2494	59	2-5594-3331	57
2-1526-3331	56	2-2988-2494	59	2-5595-3331	57
2-1527-3331	56	2-2989-2494	59	2-5596-3331	57
2-1528-3331	56	2-2990-2494	59	2-5597-3331	57
2-1529-3331	56	2-2991-2494	59	2-5598-3331	57
2-1530-3331	56	2-2992-2494	59	2-5599-3331	57



List of Part Numbers

4/5

Part Number	Page	Part Number	Page	Part Number	Page
2-5600-3331	57	21-1079-1009	48	90-1004-1201	66
2-5601-3331	57	21-1080-1009	48	90-1005-1201	66
2-5602-3331	57	21-1081-1009	48	90-1008-1100	65
2-5603-3331	57	21-1082-1009	48	90-1011-1100	65
2-5604-3331	57	21-1083-1009	48	90-1013-1100	65
2-5810-5077	62	21-1084-1009	48	90-1015-1100	65
2-6212-3332	58	21-1085-1009	48	90-1017-1100	65
2-6213-3332	58	21-1086-1009	48	90-1018-1100	65
2-6214-3332	58	21-1087-1009	48	90-1020-1100	65
2-6215-3332	58	21-1108-1009	49	90-1021-1100	65
2-6216-3332	58	21-1109-1009	49	90-1022-1000	64
2-6217-3332	58	21-1110-1009	49	90-1030-1100	65
2-6218-3332	58	21-1111-1009	49	90-1031-1100	65
2-6219-3332	58	21-1112-1009	49	90-1032-1100	65
2-6220-3332	58	21-1113-1009	49	90-1033-1201	66
2-6221-3332	58	21-1114-1009	49	90-1034-1201	66
2-6222-3332	58	21-1115-1009	49	90-1035-1201	66
		21-1116-1009	49	90-1036-1201	66
13-1009-1000	77/78	21-1117-1009	49	90-1037-1201	66
13-1016-1000	75/76	21-1138-1015	50	90-1038-1100	65
13-1027-1000	81/82	21-1139-1015	50	90-1061-1606	69
13-1030-1000	75/76	21-1140-1015	50	90-1064-1201	66
13-1055-1000	79/80	21-1141-1015	50	90-1065-1808	72
13-1069-1000	85/86	21-1142-1015	50	90-1108-1808	72
13-1096-1000	77/78	21-1143-1015	50	90-1117-1000	64
13-1120-1000	83/84	21-1144-1015	50	90-1119-1808	71
13-1126-1000	79/80	21-1145-1015	50	90-1123-1100	65
		21-1146-1015	50	90-1126-1100	65
21-1049-1009	47	21-1147-1015	50	90-1128-1100	65
21-1050-1009	47	21-1168-1018	51	90-1131-1100	65
21-1051-1009	47	21-1169-1018	51	90-1134-1100	65
21-1052-1009	47	21-1170-1018	51	90-1135-1100	65
21-1053-1009	47	21-1171-1018	51	90-1195-1201	66
21-1054-1009	47	21-1172-1018	51	90-1196-1201	66
21-1055-1009	47	21-1173-1018	51	90-1201-1808	72
21-1056-1009	47	21-1174-1018	51	90-1207-1215	71
21-1057-1009	47	21-1175-1018	51	90-1208-1215	71
21-1058-1009	47	21-1176-1018	51	90-1209-1215	71
21-1078-1009	48	21-1177-1018	51	90-1004-1202	66



Part Number	Page
90-1227-1808	72
90-1235-1215	71
90-1237-1215	71
90-1280-1201	66
90-1281-1201	66
90-1282-1201	66
90-1283-1201	66
90-1284-1201	66
90-1285-1201	66
90-1286-1201	66
90-1287-1201	66
90-1288-1201	66
90-1289-1201	66
90-1290-1201	66
90-1291-1201	66
90-1292-1201	66
90-1293-1201	66
90-1294-1201	66
90-1295-1201	66
90-1296-1201	66
90-1297-1201	66
90-1298-1201	66
90-1299-1201	66
90-1300-1201	66
90-1301-1201	66
90-1302-1201	66
90-1303-1201	66
90-1304-1201	66
90-1305-1201	66
90-1338-1606	67
90-1339-2516	68
90-1353-2610	70

DAMAR & HAGEN

Damar & Hagen Stecksysteme GmbH
Dieselstraße 11
91301 Forchheim

Phone: +49 (0) 91 91 975 89-0

Fax: +49 (0) 91 91 975 89-60

E-Mail: info@damar-hagen.de

www.damar-hagen.de

