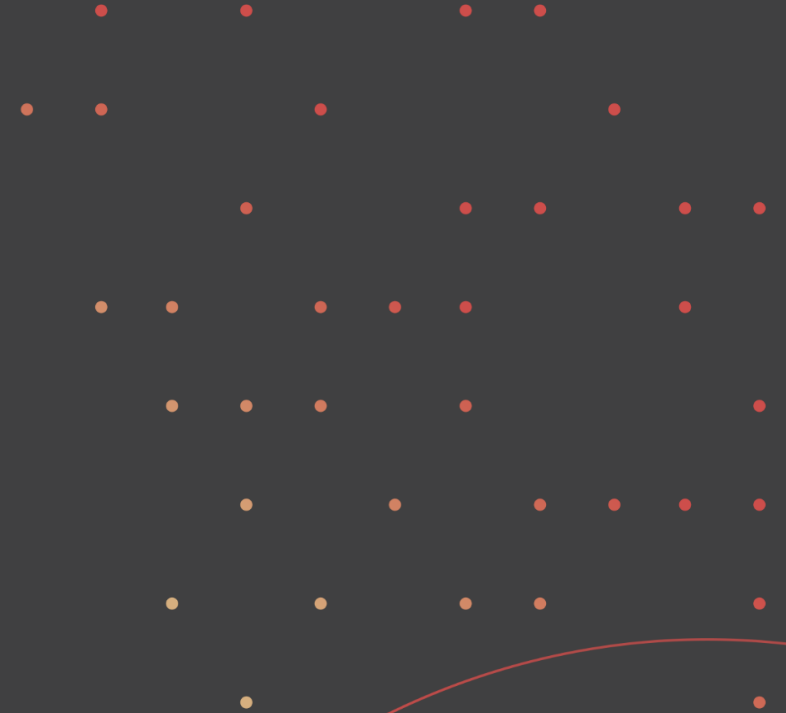




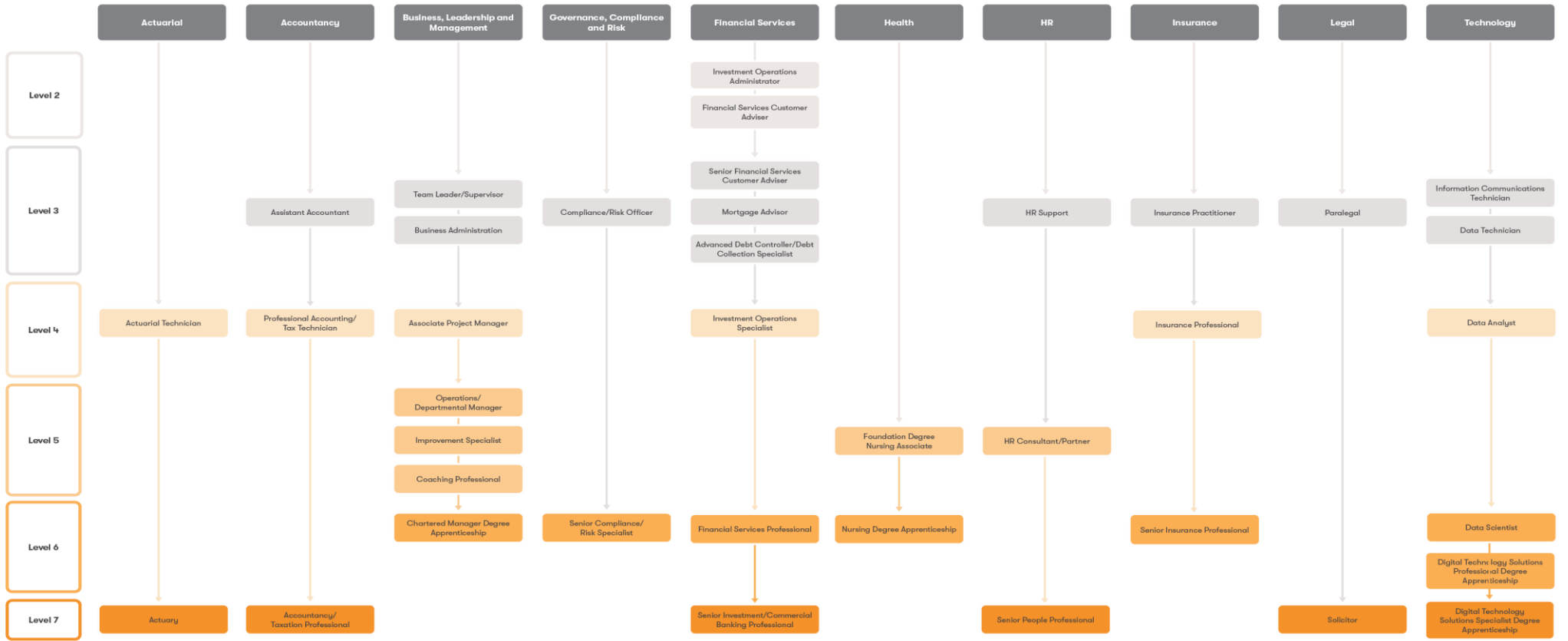
BPP APPRENTICESHIP PROGRAMMES.



One provider for all your training

We deliver programmes for your employees at every level and career stage in our range of specialist subjects.





Where Apprenticeship Standards have been approved for development or approved for delivery by the Department for Education, you can seek further detail by selecting each programme.

| Apprenticeship Standard | Level | Programme Length | BPP Resulting Qualification | Confirmed Funding Cap | BPP Price | Registration Fees** | Exam Fees ^o | End Point Assessment Fees ^A | Upcoming BPP Cohorts |
|---|---------|------------------|--|-----------------------|-----------------------|---------------------|------------------------|--|--|
| Actuarial | | | | | | | | | |
| Actuarial Technician | Level 4 | 27 months† | None | £15,000 | £15,000 | ✓ | X | ✓ | Sep-23 |
| Actuary | Level 7 | 45 months† | IFoA CM, CS, CB and CP Exams | £18,000 | £23,375 | X | ✓ | ✓ | Sep/Oct-23 |
| Accountancy | | | | | | | | | |
| Assistant Accountant | Level 3 | 18 months | AAT Level 3 | £8,000 | £8,000 | X | X | ✓ | Dec-22 Jan-23 Mar-23 Jun-23 |
| Professional Accounting / Tax Technician (AAT) | Level 4 | 18 months | AAT | £8,000 | £8,000 | X | X | ✓ | Dec-22 Jan-23 Mar-23 Jun-23 |
| Professional Accounting / Tax Technician (CIMA) | Level 4 | 18 months | CIMA Certificate in Business and Accounting | £8,000 | £8,000 | X | X | ✓ | Dec-22 Jan-23 Mar-23 Jun-23 |
| Professional Accounting / Tax Technician (ACCA) | Level 4 | 18 months | ACCA Diploma in Accounting and Business | £8,000 | £8,000 | X | X | ✓ | Dec-22 Jan-23 Mar-23 Jun-23 |
| Professional Accounting / Tax Technician (ICAEW) CFAB | Level 4 | 18 months | ICAEW Certificate in Finance, Accounting and Business | £8,000 | £8,000 | X | X | ✓ | Dec-22 Jan-23 Mar-23 Jun-23 |
| Professional Accounting / Tax Technician (ATT) | Level 4 | 20 months | ATT | £8,000 | £8,000 | X | X | ✓ | Jan-23 Jun-23 |
| Accountancy and Taxation Professional (ACCA) | Level 7 | 39 months† | ACCA | £21,000 | £21,000 ^{^^} | X | X | ✓ | Dec-22 Jan-23 Feb-23 Mar-23 Apr-23 May-23 Jun-23 |
| Accountancy and Taxation Professional (ACCA) | Level 7 | 33 months† | ACCA | £21,000 | £19,000 ^{^^} | X | X | ✓ | Dec-22 Jan-23 Feb-23 Mar-23 Apr-23 May-23 Jun-23 |
| Accountancy and Taxation Professional (ACCA) | Level 7 | 27 months† | ACCA | £21,000 | £15,500 ^{^^} | X | X | ✓ | Dec-22 Feb-23 Mar-23 May-23 Jun-23 |
| Accountancy and Taxation Professional (CIMA) | Level 7 | 39 months† | CIMA | £21,000 | £21,000 ^{^^} | X | X | ✓ | Dec-22 Jan-23 Feb-23 Mar-23 Apr-23 May-23 Jun-23 |
| Accountancy and Taxation Professional (CIMA) | Level 7 | 33 months† | CIMA | £21,000 | £19,000 ^{^^} | X | X | ✓ | Dec-22 Jan-23 Feb-23 Mar-23 Apr-23 May-23 Jun-23 |
| Accountancy and Taxation Professional (CIMA) | Level 7 | 27 months† | CIMA | £21,000 | £15,500 ^{^^} | X | X | ✓ | Dec-22 Jan-23 Feb-23 Mar-23 Apr-23 May-23 Jun-23 |
| Accountancy and Taxation Professional (ICAEW) | Level 7 | 36 months† | ICAEW | £21,000 | £21,000 ^{^^} | X | X | ✓ | Dec-22 Jan-23 Feb-23 Mar-23 Apr-23 May-23 Jun-23 |
| Accountancy and Taxation Professional (ICAEW) | Level 7 | 30 months† | ICAEW | £21,000 | £19,000 ^{^^} | X | X | ✓ | Dec-22 Jan-23 Feb-23 Mar-23 May-23 Jun-23 |
| Accountancy and Taxation Professional (ICAEW) | Level 7 | 24 months† | ICAEW | £21,000 | £15,500 ^{^^} | X | X | ✓ | Dec-22 Feb-23 Mar-23 May-23 Jun-23 |
| Accountancy and Taxation Professional (ACA / CTA) | Level 7 | 36 months† | ICAEW Chartered Tax Accountant and Chartered Tax Advisor | £21,000 | £21,000 ^{^^} | X | X | ✓ | Dec-22 Jan-23 Feb-23 Mar-23 Apr-23 May-23 Jun-23 |
| Accountancy and Taxation Professional (ACA / CTA) | Level 7 | 30 months† | ICAEW Chartered Tax Accountant and Chartered Tax Advisor | £21,000 | £19,000 ^{^^} | X | X | ✓ | Dec-22 Jan-23 Feb-23 Mar-23 Apr-23 May-23 Jun-23 |
| Accountancy and Taxation Professional (ACA / CTA) | Level 7 | 24 months† | ICAEW Chartered Tax Accountant and Chartered Tax Advisor | £21,000 | £15,500 ^{^^} | X | X | ✓ | Dec-22 Jan-23 Jun-23 |
| Accountancy and Taxation Professional (ATT / CTA) | Level 7 | 36 months | Tax Technician and Chartered Tax Advisor | £21,000 | £21,000 | X | X | ✓ | Jan-23 Apr-23 |
| Accountancy and Taxation Professional (CTA) | Level 7 | 24 months | Chartered Tax Advisor | £21,000 | £15,500 | X | X | ✓ | Jan-23 Apr-23 Jun-23 |

| Apprenticeship Standard | Level | Programme Length | BPP Resulting Qualification | Confirmed Funding Cap | BPP Price | Registration Fees** | Exam Fees o | End Point Assessment Fees^ | Upcoming BPP Cohorts |
|---|---------|------------------|---|-----------------------|-----------|----------------------|-------------|----------------------------|-----------------------------------|
| Business | | | | | | | | | |
| Business Administrator | Level 3 | 15 months | No qualification | £5,000 | £5,000 | N/A | N/A | ✓ | Jan-23 May-23 |
| Associate Project Manager | Level 4 | 19 months | APM PMQ | £6,000 | £6,000 | ✓ | ✓ | ✓ | Jan-23 Apr-23 Jul-23 |
| Improvement Specialist | Level 5 | 18 months | No qualification | £9,000 | £9,000 | ✓ | ✓ | ✓ | Apr-23 |
| Coaching Professional | Level 5 | 15 months | No qualification | £5,000 | £5,000 | N/A | N/A | ✓ | Jan-23 Apr-23 Sep-23 Nov-23 |
| Financial Services | | | | | | | | | |
| Investment Operations Administrator | Level 2 | 18 months | No qualification | £5,000 | £5,000 | ✓ | ✓ | ✓ | On Client Demand |
| Investment Operations Specialist | Level 4 | 18 months | CISI IOC | £9,000 | £9,000 | ✓ | ✓ | ✓ | Feb-23 May-23 |
| Investment Operations Specialist | Level 4 | 24 months | CISI IAD | £9,000 | £9,000 | ✓ | ✓ | ✓ | On Client Demand |
| Financial Services Customer Adviser | Level 2 | 15 months | No qualification | £3,500 | £3,500 | N/A | N/A | ✓ | On Client Demand |
| Senior Financial Services Customer Adviser | Level 3 | 15 months | Chartered Banker Professional Banker Certificate | £8,000 | £8,000 | ✓ | ✓ | ✓ | Jan-23 Apr-23 |
| Senior Financial Services Customer Adviser | Level 3 | 18 months | CII Certificate (IF1, IF2 and choice of IF3 / IF4 / IF9 / I10) | £8,000 | £8,000 | ✓ | ✓ | ✓ | On Client Demand |
| Insurance Practitioner | Level 3 | 18 months | CII Certificate in Insurance (IF1, IF2 and a choice of IF3 / IF4 / I10) | £8,000 | £8,000 | ✓ | ✓ | ✓ | Jan-23 Apr-23 Jul-23 |
| Insurance Practitioner | Level 3 | 18 months | CII Certificate in Insurance (LM1, LM2 and a choice of IF3 / IF4 / I10) | £8,000 | £8,000 | ✓ | ✓ | ✓ | Jan-23 Apr-23 Jul-23 |
| Insurance Professional | Level 4 | 24 months | CII Diploma in Insurance (IF1, IF2, M92, M05, M80 and M85) | £9,000 | £9,000 | ✓ | ✓ | ✓ | Jan-23 Apr-23 Jul-23 |
| Insurance Professional | Level 4 | 24 months | CII Diploma In Insurance (LM1, LM2, M92, M05 and a choice of M80 / M85 and *M96 | £9,000 | £9,000 | ✓ | ✓ | ✓ | Jan-23 Apr-23 Jul-23 |
| Senior Insurance Professional | Level 6 | 39 months | CII Advanced Diploma in Insurance | £21,000 | £21,000 | ✓ | ✓ | ✓ | Sep-23 |
| Compliance / Risk Officer | Level 3 | 15 months | ICA Certificate in Anti-Money Laundering / Compliance / Financial Crime Prevention. Specialist ICA Certs available on request | £9,000 | £9,000 | ✓ | ✓ | ✓ | Jan-23 Apr-23 |
| Senior Compliance / Risk Specialist | Level 6 | 24 months | ICA Diploma in Compliance / Financial Crime Prevention / Anti-Money Laundering | £27,000 | £27,000 | ✓ | ✓ | ✓ | Feb-23 May-23 Aug-23 Nov-23 |
| Senior Compliance / Risk Specialist | Level 6 | 24 months | CISI Diploma in Investment Compliance | £27,000 | £27,000 | ✓ | ✓ | ✓ | On Client Demand |
| Financial Services Professional | Level 6 | 18 months | CISI Private Client Investment Advice and Management (PCIAM) | £18,000 | £18,000 | ✓ | ✓ | ✓ | May-23 |
| Financial Services Professional | Level 6 | 18 months | Associated Chartered Banker Diploma / CFA Level I | £18,000 | £18,000 | ✓ | ✓ | ✓ | Jan-23 May-23 Jul-23 Oct-23 |
| Financial Services Professional | Level 6 | 24 months | CFA I + IMC* | £18,000 | £19,700 | ✓ | ✓ | ✓ | Jan-23 May-23 Jul-23 Oct-23 |
| Senior Investment / Commercial Banking Professional | Level 7 | 36 months† | IMC* + CFA I, II and III†† | £18,000 | £21,700 | ✓ except for add ons | ✓ | ✓ except for add ons | Jan-23 May-23 Oct-23 |
| Senior Investment / Commercial Banking Professional | Level 7 | 24 months† | CFA II and III | £18,000 | £18,000 | ✓ | ✓ | ✓ | Jan-23 May-23 Oct-23 |
| Senior Investment / Commercial Banking Professional | Level 7 | 24 months | Advanced Diploma in Banking and Leadership in a Digital Age | £18,000 | £18,000 | ✓ | ✓ | ✓ | Jan-23 May-23 Oct-23 |
| Mortgage Advisor | Level 3 | 15 months | IFS CeMaP | £9,000 | £9,000 | ✓ | ✓ | ✓ | On Client Demand |
| Advanced Credit Controller / Debt Collection Specialist | Level 3 | 18 months | CICM Diploma | £9,000 | £9,000 | ✓ | ✓ | ✓ | On Client Demand |

| Apprenticeship Standard | Level | Programme Length | BPP Resulting Qualification | Confirmed Funding Cap | BPP Price | Registration Fees** | Exam Fees o | End Point Assessment Fees^ | Upcoming BPP Cohorts |
|---|---------|------------------|---|-----------------------|-----------|---------------------|-------------|----------------------------|---|
| Health | | | | | | | | | |
| Registered Nurse (Adult) | Level 6 | 36/48 months | BSc (Hons) Nursing (Adult) | £26,000 | £26,000 | N/A | ✓ | ✓ | Mar-23 Jun-23 Aug-23 And bespoke cohorts available on request |
| Registered Nurse (Adult) (Top-Up) | Level 6 | 24 months | BSc (Hons) Nursing (Adult) | £13,000 | £13,000 | N/A | ✓ | ✓ | Mar-23 Jun-23 Aug-23 And bespoke cohorts available on request |
| Registered Nurse (Child) | Level 6 | 36/48 months | BSc (Hons) Nursing (Child) | £26,000 | £26,000 | N/A | ✓ | ✓ | Mar-23 Jun-23 Aug-23 And bespoke cohorts available on request |
| Registered Nurse (Child) (Top-Up) | Level 6 | 24 months | BSc (Hons) Nursing (Child) | £13,000 | £13,000 | N/A | ✓ | ✓ | Oct-22 Mar-23 Jun-23 Aug-23 And bespoke cohorts available on request |
| Registered Nurse (Mental Health) | Level 6 | 36/48 months | BSc (Hons) Nursing (Mental Health) | £26,000 | £26,000 | N/A | ✓ | ✓ | Mar-23 Jun-23 Aug-23 And bespoke cohorts available on request |
| Registered Nurse (Mental Health) (Top-Up) | Level 6 | 24 months | BSc (Hons) Nursing (Mental Health) | £13,000 | £13,000 | N/A | ✓ | ✓ | Mar-23 Jun-23 Aug-23 And bespoke cohorts available on request |
| Nursing Associate | Level 5 | 18/24 months | Nursing Associate Foundation Degree | £15,000 | £15,000 | N/A | ✓ | ✓ | Mar-23 Jun-23 Aug-23 And bespoke cohorts available on request |
| HR | | | | | | | | | |
| HR Support | Level 3 | 16 months | CIPD Foundation Certificate in People Practice* | £4,500 | £4,500 | ✓ | N/A | ✓ | Jan-23 May-23 |
| HR Consultant / Partner | Level 5 | 22 months | CIPD Associate Diploma in People Management | £7,000 | £7,000 | ✓ | N/A | ✓ | Jan-23 May-23 |
| Senior People Professional | Level 7 | 30 Months | CIPD Advanced Diploma in Strategic People Management* | £19,000 | £19,000 | ✓ | N/A | ✓ | Jan-23 |
| Legal | | | | | | | | | |
| Paralegal | Level 3 | 24 Months | Certificate of Higher Education (Law and Legal Practice) | £8,000 | £8,000 | N/A | N/A | ✓ | Sep-23 |
| Solicitor | Level 7 | 72 months | LLB (Hons) Law and Legal Practice* | £27,000 | £27,000 | N/A | N/A | ✓ | Sep-23 |
| Solicitor *** | Level 7 | 30 months | Graduate Diploma in Legal Practice | £27,000 | £13,000 | N/A | N/A | ✓ | Jan-23 |
| Solicitor *** | Level 7 | 32 months | Postgraduate Diploma in Legal Practice | £27,000 | £15,000 | N/A | N/A | ✓ | Sep-23 |
| Leadership and Management | | | | | | | | | |
| Team Leader/Supervisor | Level 3 | 16 months | CMI Level 3 Diploma in Management* No qualification from cohorts starting Jul-22 | £4,500 | £4,500 | ✓ | N/A | ✓ | Jan-23 Apr-23 Jul-23 |
| Operations/Departmental Manager | Level 5 | 15 months | No qualification (Can apply for CMI Membership after completion of EPA) | £7,000 | £7,000 | ✓ | N/A | ✓ | Jan-23 Apr-23 Jul-23 |
| Chartered Manager (Degree) | Level 6 | 48 Months | BSc Applied Management | £22,000 | £22,000 | N/A | N/A | ✓ | On Client Demand |
| Technology | | | | | | | | | |
| Data Technician | Level 3 | 15 months | No qualification | £12,000 | £12,000 | N/A | N/A | ✓ | Feb-23 May-23 Aug-23 |
| Business Analyst | Level 4 | 18 months | No qualification | £18,000 | £18,000 | N/A | N/A | ✓ | Feb-23 May-23 Aug-23 |
| Data Analyst | Level 4 | 21 months | No qualification | £15,000 | £15,000 | N/A | N/A | ✓ | Feb-23 May-23 Aug-23 |
| Data Scientist (Integrated Degree) | Level 6 | 36 months | Undergraduate degree: BSc (Hons) in Data Science | £19,000 | £19,000 | N/A | N/A | ✓ | Jan-23 May-23 |
| Digital and Technology Solutions Professional (Integrated Degree) | Level 6 | 30 months | Undergraduate degree: BSc (Hons) in Digital and Technology Solutions | £25,000 | £25,000 | N/A | N/A | ✓ | Jan-23 May-23 |
| Digital and Technology Solutions Specialist (Integrated Degree) | Level 7 | 24 Months | Masters degree: MSc Applied Data Analytics (Integrated Degree Apprenticeship) | £21,000 | £21,000 | N/A | N/A | ✓ | Jan-23 May-23 |

* This qualification is not mandated in the Apprenticeship Standard but is included as a BPP value add.

** Registration and Exam fees: Where the Professional Qualification is not mandated by the Apprenticeship Standard, Apprenticeship registration fees, exam fees and resits will not be covered and must be paid for outside of the apprenticeship. Where the Professional Qualification is mandated the registration fees will be covered for the duration of the programme in line with the Apprenticeship Learning Plan (ALP)

*** The 30/32 month solicitor pathways for GDLP and PDLP are for graduates with an LLB or equivalent

**** The 32 month solicitor PDLP pathway is a 'block learn' model with 8 months of full time study from the start date

o Exam fees: Where the Professional Qualification is mandated in the Apprenticeship Standard, the exam fees for the first attempt only will be included. For degree apprenticeships, and apprenticeships incorporating a University award, under the General Academic Regulations of the University (GARs) learners are entitled to 3 attempts at any one assessment, and these are included within the programme fee.

† BPP will use your prior learning and experience to determine your programme duration.

†† IMC can be integrated into the apprenticeship (as part of the 20% off the job training requirement) if required but will be charged over the funding cap.

‡ Or an alternative CII module worth at least 25 credits

^ End point assessment resits; BPP will provide support (within the allowable time period of the apprenticeship Standard) should a resubmission be required, but will not be liable for any additional fees charged by the Assessment Organisation (AO).

^^ Further price reductions might be applicable if you are part way through, or have exemptions, from a professional qualification level

Please note BPP may choose to cancel cohorts where there are a low number of learner applications

'On client demand': an employer can access this programme if they have a sufficient number of learners for their own cohort

Call **03300 603 100** or
visit **[bpp.com/apprenticeships/apprenticeships-for-employers](https://www.bpp.com/apprenticeships/apprenticeships-for-employers)**

Disclaimer: This information is accurate as at the date of publication, April 2021. It is subject to change.
This document is for guidance only and does not form part of any contract. For more, visit [bpp.com](https://www.bpp.com).
©BPP Professional Education Limited 2021. 07545

