

ion[®]



brand story



Unlock the professional secret to beautiful hair with ion professional. With over 120 shades of hair colour and an extensive range of care and styling products, discover ion's new and exciting range that inspires you to set your creativity free.

Specially developed with customers in mind, ion's extensive range of Permanent, Permanent Hi-lift, Semi-Permanent, Semi-Permanent Pastel and Colour Flash Gel Hair Colours offer you the perfect colour palette. So whether you're looking for a permanent long-lasting ultra-light blonde or a semi-permanent on-trend pastel tone, you can find the perfect colour to suit your clients' needs.

ion understands that the secret to beautiful hair isn't just about colour; it's about looking after the hair too. That's why ion has specially developed a range of care and styling products with key nourishing and conditioning ingredients that work with the individual's hair type to offer the complete hair care solution. With an extensive range of products including shampoos, conditioners and styling aids, across 5 families including Colour Care, Moisture Care, Volume Boost, Smooth Perfect and Deep Cleanse, unlock the professional secret to beautiful hair today.



contents

- 4** Colour Consultation
- 5** Hair Characteristics
- 6** Colour Theory
- 8** International Colour System
- 9** Permanent Colour
- 13** Identifying base Shade
- 14** Underlying Pigment
- 15** Grey Coverage
- 20** High-lift
- 22** Formula, Creative Mixing and Boosters
- 23** Semi-Permanent Colour
- 27** Semi-Permanent Pastel Colour
- 31** Colour Flash
- 34** Quick Reference Guide

dark warm

dark warm

dark warm

medium warm

medium warm

medium warm

light warm

light warm

light warm

colour consultation

Determining which shades best match skin colour and tone will enhance your clients hair to leave it looking shiny and healthy.

Before choosing the colour be sure to complete the following:

- You will need to define whether your client has a warm or a cool complexion
- Use the colour tone definer on this page to determine:
 - Natural hair depth
 - Eye colour
 - Skin tone

Step 1: warm or cool tone?

Using the tone definer, on the page, place it underneath your clients chin. Determine whether your client has a warm or cool skin tone according to the tone definer.

Which is the most flattering shade to your clients complexion?

Step 2: light, medium or dark depth?

Now that you know whether your client has warm or cool tones let's determine if light, medium or dark would be the most flattering. Place each section (light, medium and dark) under the chin to determine the depth needed to give your client the perfect tone.

light cool

light cool

light cool

medium cool

medium cool

medium cool

dark cool

dark cool

dark cool

hair characteristics

Looking at the hairs characteristics will help create an overall better colour service for clients.

Texture: the diameter of the individual hair strand

- Extremely fine hair – When colouring may process darker
- Fine hair – Lacks body and will lighten more easily
- Medium hair – Healthy texture with body reacts positively to colouring
- Coarse hair – Resistant with a glossy shine, may give a lighter result than expected

fine



normal



coarse



Porosity: the hairs ability to absorb which will affect how the hair responds to colouring

- Non-porous hair - The hair looks and feels glassy which will make it resistant to lightening and may require a longer processing time.
- Normal porosity hair – Hair is smooth and shiny with an undamaged cuticle, it will have a good response to colouring.
- Porous hair – Hair has an open cuticle with a dull rough effect making the hair easy to lighten but will be inclined to fade quickly.

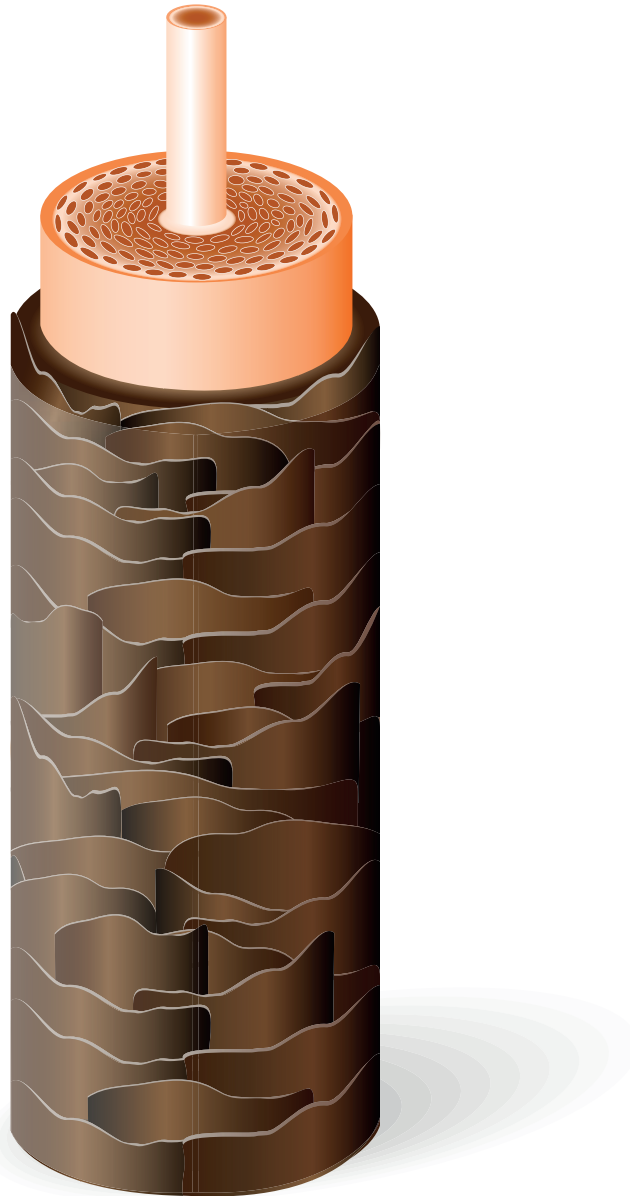
Adjusting formulas for hair porosity

Healthy hair accepts warm tones and rejects cool tones – add ash or natural shades to neutralise.

Porous hair accepts cool tones and rejects warm tones – add red, orange or gold to neutralise.

NB: If hair has porous ends – when colouring expect the faded areas to accept the ash and reject warm tones.

colour theory



Cuticle

The cuticle refers to the outside layer of the hair shaft. It is composed of transparent, overlapping and protective scale-like cells. The cuticle protects the inner structure of the hair. A healthy, flat cuticle layer promotes strength, shine and the overall appearance of the hair.

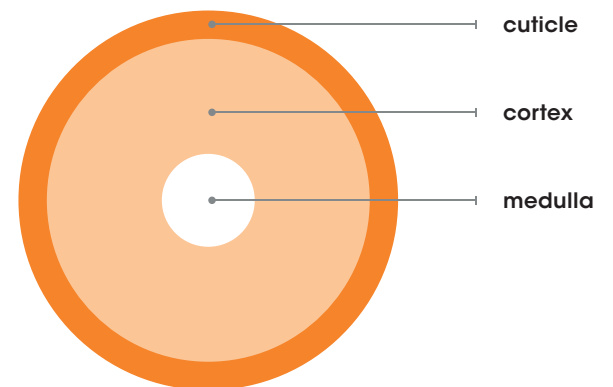
Cortex

The cortex is the center part of the hair and makes up the majority of the hair shaft. It gives the hair special qualities like elasticity and curl. The cortex is packed with strands of keratin that lie along the length of the hair. Oxidative pigments are developed or oxidized in the cortex with permanent and demi/semi permanent hair colour.

Medulla

Finally, the medulla is the canal-shaped innermost part of human hair. It has no known function and not all hair contains a medulla.

Cross section



colour theory

the colour wheel



Primary colours: Three colours which, when blended, make up all other colours.

NB: An equal mix of all three primary colours will create a neutral tone.

Blue	Red	Yellow
Cool tone Largest molecular size First to leave the hair	Warm tone Second in molecular size Colour appears richer and warmer	Warm tone Smallest molecular size Colour appears lighter and brighter Hardest to remove

Secondary colours: A mix of two primary colours.

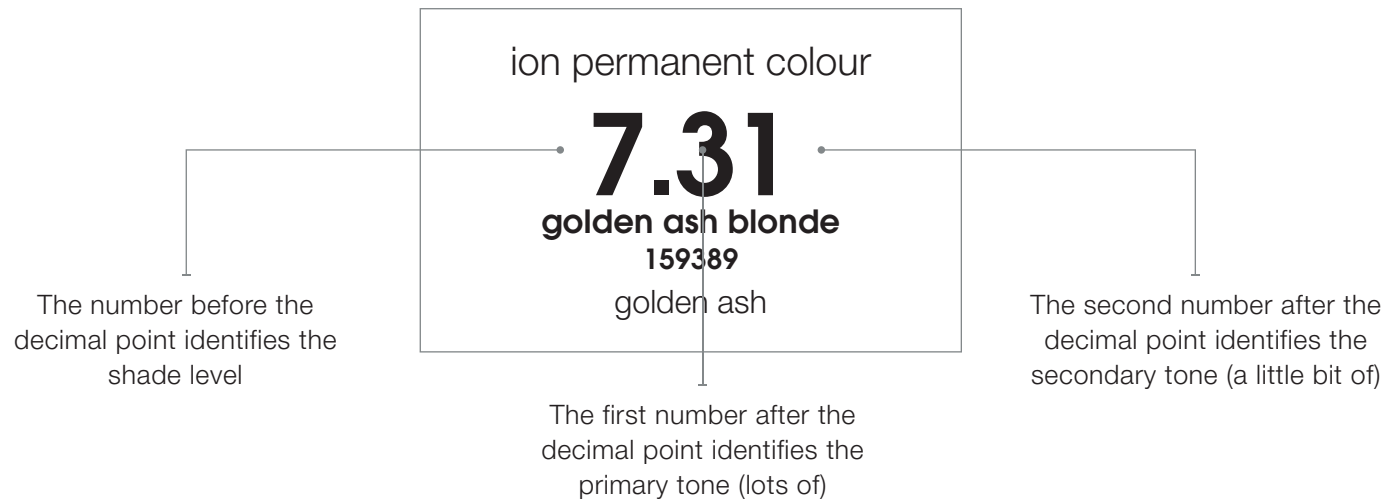
Blue + red = violet	Red + yellow = orange	Yellow + blue = green
----------------------------	------------------------------	------------------------------

Complimentary colours: Colours that are found opposite each other on the colour wheel.

If these colours are mixed together they neutralise each other.

Blue + orange = neutral tone	Red + green = neutral tone	Yellow + violet = neutral tone
-------------------------------------	-----------------------------------	---------------------------------------

international colour system



Shade level

Number	Shade
1	Black
2	Very dark brown
3	Dark brown
4	Brown
5	Light brown
6	Dark blonde
7	Blonde
8	Light blonde
9	Very light blonde
10	Lightest blonde

Tone level

Number	Tone
1	Ash
2	Violet
3	Gold
4	Copper
5	Mahogany
6	Red
7	Brown

permanent shade chart

	1 black	2 very dark brown	3 dark brown	4 brown		5.34 light golden copper brown	6.34 dark golden copper blonde	6.45 dark copper mahogany blonde	6.46 dark copper red blonde
natural					copper				
	5 light brown	6 dark blonde	7 blonde	8 light blonde		7.34 golden copper blonde	8.34 light golden copper blonde	5.4 light copper brown	6.4 dark copper blonde
	9 very light blonde	10 lightest blonde				7.4 copper blonde	7.44 intense copper blonde	8.44 light copper intense blonde	9.44 very light intense copper blonde
intense natural	4.0 intense brown	5.0 light intense brown	6.0 dark intense blonde	7.0 intense blonde	red	4.45 copper mahogany brown	5.5 light mahogany brown	5.62 light red iridescent brown	5.64 light red copper brown
	8.0 light intense blonde	9.0 very light intense blonde				5.66 light intense red brown	6.64 dark red copper blonde	6.66 dark intense red blonde	

permanent shade chart

blonde	8.12 light ash iridescent blonde	9.12 very light ash iridescent blonde	10.12 lightest ash iridescent blonde	10.31 lightest golden ash blonde	ash	5.1 light ash brown	6.1 dark ash blonde	7.1 ash blonde	8.1 light ash blonde	9.1 very light ash blonde	
	7.31 golden ash blonde	8.31 light golden ash blonde				5.3 light golden brown	6.3 dark golden blonde	7.3 golden blonde	8.3 light golden blonde	9.3 very light golden blonde	
	5.35 light golden mahogany brown	5.53 light mahogany golden brown	6.35 dark golden mahogany blonde	7.35 golden mahogany blonde		gold	11 ultra light blonde	11.1 ultra light ash blonde	11.2 ultra light iridescent blonde	11.3 ultra light golden blonde	11.11 silver
	4.20 intense violet brown	5.20 light intense violet brown					11.13 ultra light ash golden blonde	12.00 super light natural blonde	12.12 super light ash iridescent blonde	12.89 super light pearl ash blonde	
mahogany					hi-lift	000 lightener	001 blue	002 violet	004 copper mix	006 red	
						000 lightener	001 blue	002 violet	004 copper mix	006 red	
violet					mixer						



permanent colour



Ion Permanent Colour Creme is a long-lasting permanent hair colour which allows you to change the natural colour of the hair by depositing the latest generation of colour pigments inside the hair structure. Pure dyes are combined with a blend of specially selected cosmetic ingredients that invigorate damaged hair, leaving it richly coloured, beautifully nourished and full of body and shine. Specially formulated with Vitamin C and Polyquaternium-6, these active ingredients help to retain hair moisture, reduce static build-up and protect the hair against damage.

What are the benefits?

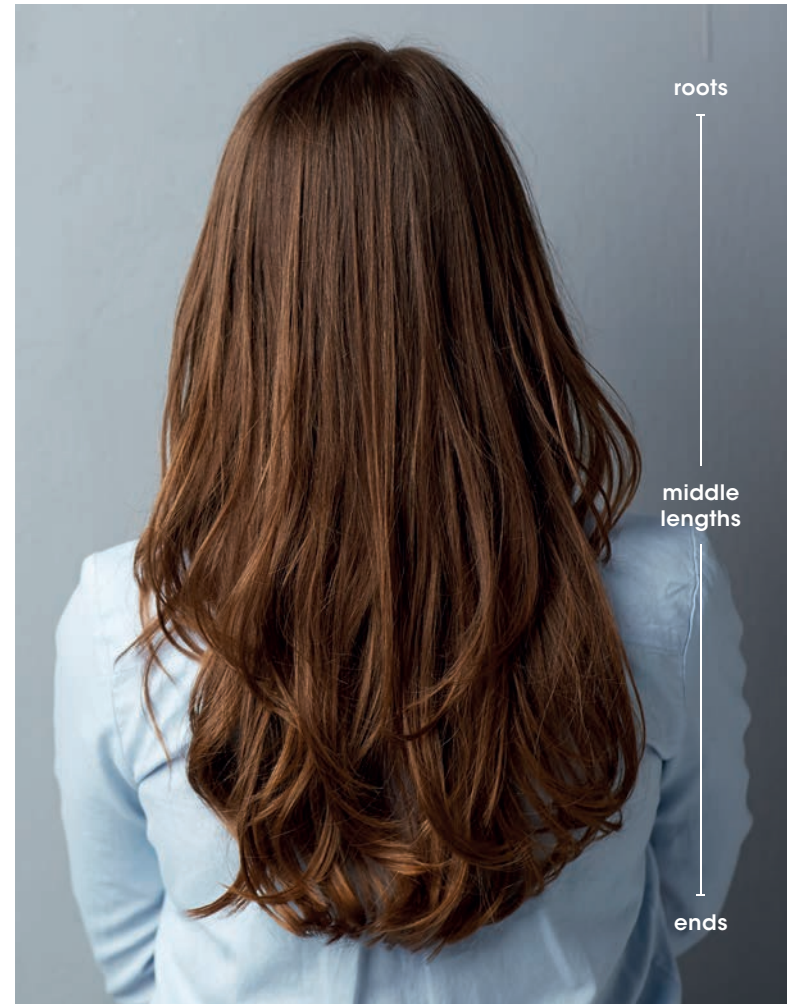
- A conditioning, long lasting colour that gives excellent depth and tone.
- Perfect vibrant colour from root to tip.
- Respects the hair structure with conditioning properties.
- Up to 100% coverage on grey and white hair.
- Pure dyes for long lasting colour results.
- Get more for your money with a 100ml tube.

The perfect choice for achieving beautifully radiant, permanent colour results that you and your clients will love.

identifying the base shade

Using the shade chart select the shade which is closest to the clients natural level.

To determine the natural level of the hair shade hold the shade chart shown below close to the scalp first to identify their natural colour, then check the middle lengths and ends as the level may vary along the length of hair.



lightest
blonde

very light
blonde

light
blonde

medium
blonde

dark
blonde

light
brown

medium
brown

dark
brown

darkest
brown

black

underlying pigment

Underlying pigment refers to the undertones that are exposed anytime natural hair colour is lifted. Generally, this affects the outcome of a colour formulation when lifting by two or more levels and the volume of developer affects underlying pigment exposed in the lifting process.

Remember the final hair colour is a combination of the hair's underlying pigments and the artificial colour used.

Desired level	Natural underlying tone	To neutralise unwanted warmth
1	Dark red brown	Green
3	Red	Green
4	Red orange	Green
5	Orange	Blue
6	Orange gold	Blue
7	Gold orange	Blue
8	Deep yellow	Violet
9	Yellow	Violet
10	Pale yellow	Violet

grey coverage

Ion permanent hair colour provides up to 100% grey coverage by using the latest generation of colour pigments, follow the table below to ensure perfect coverage every time.

10 Volume Developer is recommended for grey coverage when the target shade is 1-2 levels of the natural colour. 20 Volume Developer is recommended for resistant hair.

For best results allow the colour to develop for 45 minutes.

% of grey	% of natural series	% of desired colour
25%	25%	75%
50%	50%	50%
50-100%	75%	25%

permanent developers



Ion Creme Developer is a high performance peroxide for hair colouring and bleaching. Specially formulated with Limnanthes Alba (White Meadow-foam) seed oil, this active ingredient forms a protective film on the hair, helping to retain moisture and

prevent dehydration throughout the colouring process. Leaving hair feeling beautifully soft and manageable with healthy body and glossy shine.

Crème Developer / Peroxide

Desired level of lift

3% - 10 volume

Tone on tone / Depositing colour

6% - 20 volume

1 to 2 levels lift

9% - 30 volume

2 to 3 levels lift

12% - 40 volume

4+ levels lift

steps to formulation and timings

- Step 1** Determine the natural level of the hair colour (see page 14)
- Step 2** Determine the desired level and tone (see page 15)
- Step 3** Define levels of lift, deposit or tonal change (see page 17)
- Step 4** Identify grey percentage (see page 16)
- Step 5** Identify underlying pigment (see page 15)

Fashion colours have a tendency to fade between retouches, it is therefore advisable to pull the colour through to the mid-lengths and ends.

Formula: Add 25ml of your colour mixture to the existing bowl (Do not add any additional developer).



Requirement	Formula (Mixing ratio)	Timing	Application
Depositing colour or lift up to 3 levels	1 part colour :1.5 parts developer eg: (50ml colour 75ml developer)	30 mins	Dry hair
Adding 000 for additional lift	1 part colour :1.5 parts developer eg: (25ml desired colour + 25 ml 000 + 75ml developer)	30 mins	Dry hair
Adding colour mixes to intensify	1 part colour :1.5 parts developer eg: (15ml mixer + 35ml + 75ml developer)	30 mins	Dry hair
Cover first signs of grey (below 30%)	1 part colour :1.5 parts developer	30 mins	Dry hair
Cover grey 50%+	1 part colour :1.5 parts developer	30–40 mins	Dry hair





hi-lift and bleach



The Hi-lift range provides up to 5 levels of lift for extra light blonde shades

- Formulated with Vitamin C and conditioning, anti-static ingredients
- Mixing and Processing: 1:2 mixing ratio with a 45-50 minute development time.
- The Hi-lift range is a single process of lifting and toning.

Top Tip

000 lightener can be added into any Hi-lift shade to give you 5 levels of lift.

Ion Bleach is used for all off scalp applications, with a low explanation rate it is great for free techniques.

Shade

Tone

11	Ultra light blonde
11.1	Ultra light ash blonde
11.2	Ultra light iridescent blonde
11.3	Ultra light golden blonde
11.11	Silver
11.13	Ultra light ash golden blonde
12.00	Super light natural blonde
12.12	Super light ash iridescent blonde
12.89	Super light pearl ash blonde



formula, creative mixing and boosters

001
lightener



001
blue



002
violet



004
copper mix



006
red



Ion mixers have been specifically formulated to boost the intensity of any shade and can be used as mixer tones to counteract any unwanted shades.

Mixer Shade	Effect
Blue	Blue enhancement to level 5 and below
Violet	Violet reflection to level 6 and above
Copper	Added copper reflection to any shade
Red	Enhanced red reflection to levels 7 and below

Booster use	Mixing ratio formula
For increased vibrancy	50mls colour 75mls developer 12.5mls mixer tone
Special effects	25mls mixer tone 37.5mls developer Apply to dry, previously lightened hair

semi-permanent shade chart

natural	4 brown	5 light brown	6 dark blonde	7 blonde	gold	5.3 light golden brown	6.3 dark golden blonde	7.3 golden blonde	8.3 light golden blonde
	8 light blonde	9 very light blonde				9.3 very light golden blonde			
copper	6.46 dark copper red blonde	6.4 dark copper blonde	7.44 intense copper blonde		red	5.62 light red iridescent brown	6.66 dark intense red blonde	7.62 red iridescent blonde	
ash	6.1 dark ash blonde	7.1 ash blonde	8.1 light ash blonde		violet	5.20 light intense violet brown	6.26 dark iridescent red blonde		
mahogany	4.35 golden mahogany brown	5.35 light golden mahogany brown	6.35 dark golden mahogany blonde	7.35 golden mahogany blonde	cool brown	5.77 light intense cool brown	6.77 dark intense cool blonde		

semi permanent colour (demi)



Features and Benefits

- Provides extraordinary softness and brilliance to the hair
- Dual action colouring system for long lasting, rich, intense results
- Shine polymers create a smooth, even, reflective transparent film leaving the hair with a lustrous shine
- Up to 50% grey coverage
- A Keratin derivative to improve the hair's structure plus natural orange wax to smooth and condition
- Gloss gel-cream for easy and fast application
- Ammonia free and lasts up to 2 months (approx. 24 washes)
- Used for multiple techniques such as:
 - applying colour for the first time
 - covering first grey hair
 - intensifying/refreshing the colour of previously dyed hair (glossing service)
 - pastel toning



steps to formulation and timings

Step 1 Determine the natural level of the hair colour (see page 14)

Step 2 Determine the desired level and tone (see page 15)

Step 3 Define levels of lift, deposit or tonal change (see page 17)

Step 4 Identify grey percentage (see page 16)

Step 5 Identify underlying pigment (see page 15)

Fashion colours have a tendency to fade between retouches, it is therefore advisable to pull the colour through to the mid-lengths and ends.

Formula: Add 25ml of your colour mixture to the existing bowl (Do not add any additional developer).



Hair Service	Developer	Formula	Timing	Application
Maintain natural colour level	3%	1 : 1.5	25 mins	Shampooed – Towel dried hair
Add depth or refresh colour	3%	1 : 1.5	20-25 mins	Shampooed – Towel dried hair
Cover first signs of grey (below 30%)	3%	1 : 1.5	25 mins	Shampooed – Towel dried hair
Toning	3%	1 : 1.5	5–15 mins	Shampooed – Towel dried hair
Equalizing or pre-pigmentation	3%	1 : 2	5-15 mins	Shampooed – Dry hair
Enhance red shades	3%	1 : 1.5	20-25 mins	Shampooed – Towel dried hair
Cover 30-50% grey hair	3%	1 : 1.5	25 mins	Shampooed – Dry hair
Lift one tone lighter	3%	1 : 1.5	25 mins	Shampooed – Dry hair

semi-permanent pastel shade chart

diamond



wisteria



green tea



pastel blue



pastel pink



orchid



turquoise



The most fashionable colours, ion Pastel Soft Tones, fade slowly and gently, allowing the hair colour to be changed as often as desired. The low ammonia and PPD free formula is gentle on the hair and scalp without compromising on results, allowing for frequent colour changes with minimal damage. The low pigment content ensures a soft overall colour, while the pure pigments gently penetrate into the hair to give soft, luminous, pastel-coloured highlights.

Ion Pastel Diamond has been specially formulated to be mixed with any ion Pastel Creme to reduce the colour intensity for extra light pastel shades. Ion Pastel Diamond can be mixed with any ion Pastel shade in the proportion required to achieve the desired result. For example, 25ml ion Pastel Diamond + 25ml ion Pastel shade + 50ml ion Pastel Creme Developer.

pastel

creative colour



Colour intensity will depend on the hair's natural colour, here are some methods to achieve the best results

- Base 10 or lighter for intense pastel tones
- Light blonde base 8 to brown base 6 for a pearly multi-coloured effect.
- For an even softer and lighter result, mix your chosen ion Pastel shade with ion Pastel Diamond to reduce the intensity.
- We recommend carrying out a strand test to determine the mixing ratio and development time required to achieve the desired result.

Features and benefits

- Low ammonia and PPD free semi permanent colour for creating soft pastel shades
- Colour fades slowly allowing you to change with the trends
- 6 shades + our Diamond which adds shine on its own or can be used to dilute other shades to your desired pastel.
- Lasts up to 15 washes



steps to formulation and timings

- Step 1** Determine the natural level of the hair colour (see page 14)
- Step 2** Determine the desired level and tone (see page 15)
- Step 3** Define levels of lift, deposit or tonal change (see page 17)
- Step 4** Identify grey percentage (see page 16)
- Step 5** Identify underlying pigment (see page 15)

Fashion colours have a tendency to fade between retouches, it is therefore advisable to pull the colour through to the mid-lengths and ends.

Formula: Add 25ml of your colour mixture to the existing bowl
(Do not add any additional developer).



Hair Service	Developer	Formula	Timing	Application
Pastel Toning	Pastel Developer	1 : 1	5–15 mins	Dry hair, freshly shampooed

colour flash shade chart

mega
magenta



chaotic
chrimson



ruby red



hot pink



cotton candy



exotic orange



tropical
turquoise



cobalt blue



ultra indigo



lovely lilac



deep purple



super silver



perfect
platinum



crystal clear



colour flash



Ion Colour Flash is a contemporary, vibrant, semi-permanent gel hair colour that allows hair to be temporarily transformed in a flash! From all-over intense colour to subtle pastel tones to dip-dye, unleash your creativity and give your clients the bold colour results they want with ion Colour Flash Gel.

Specially formulated with Panthenol and Soya Protein, these active ingredients help to nourish, condition and protect the hair against damage, leaving hair beautifully soft and bursting with radiant colour.

For all over coverage, we recommend using half a bottle for short hair and a full bottle for long hair. The colour intensity will depend on the base hair colour. To obtain a pastel tone, mix your chosen Colour Flash shade with Colour Flash Crystal Clear. We recommend carrying out a strand test to determine the colour ratio and development time required to achieve the desired result. The colour duration will vary according to the base hair colour and characteristics, and will gradually fade with shampooing.

Features and Benefits

- Professional semi-permanent gel hair colour available in 13 vibrant shades and a clear mixer gel for achieving pastel tones (Crystal Clear)
- Suitable for natural, coloured or pre-lightened hair
- Enriched with nourishing Soya Protein and Panthenol
- 5-20 minute development time depending on desired intensity
- Fades gradually with shampooing



quick reference

Hair Colouring Precautions

- Administer a patch test 48 hours prior to any colour service
 - Do not colour hair if the scalp has any abrasions present
 - Perform a strand test to preview colour results
 - Always wear gloves
 - Do not allow the colour to come into contact with the eyes
 - Do not overlap the hair colour
 - Do not use very hot water
-

Patch / Allergy Test

- Cleanse the area behind the ear
- Prepare colour – using the same mixing ratio as for the strand test
- Apply colour to the back of the clients ear lobe with a cotton bud
- Leave for 48 hours
- If no reaction has occurred proceed with colour service / If there is any reaction, redness or itchiness rinse immediately and do not proceed with colour service

Strand Test

This will determine your end colour result and could save time

- Mix 10ml colour + 10ml of desired developer
 - Apply to a small section of the hair using foil to isolate the strand
 - Process for the full time – Rinse and shampoo
 - The result will determine if adjustments to the formulation are necessary
-



ion[®]