



**BRASS FITTINGS
& ACCESSORIES**

BLANK PAGE
INSIDE FRONT COVER



▼ Table of Contents

04 - 07 | Pipe Fittings & Nipples

08 - 11 | Compression Fittings

12 - 15 | Flare Fittings

16 - 17 | Garden Hose Fittings

18 - 21 | Brass & Nylon Barb Fittings

22 - 23 | Push Fit Fittings

FLARE, COMPRESSION FITTINGS

Our Brass & Nylon Fittings is a new category that B&K has recently acquired. This program encompasses a variety of fittings for any plumbing project.

All of our products in this category come polybagged with part numbers clearly labeled on them. Along with easy identification, these bags allow for you to see the product you are looking at to verify this is the right piece for your project.



BRASS PIPE FITTINGS & NIPPLES

The B&K Brass Pipe Fittings & Nipples category offers a wide array of fittings and nipples. Nipples are available in several lengths and thread sizes and our fittings are offered in a number of configurations using both male and female pipe threads. Many popular pipe fittings are offered in both barstock and cast materials. All tapered pipe threads are manufactured to the highest quality standards and tolerances.

These fittings we recommend to use with brass, copper or iron pipe. They are commonly used for oil, natural gas, water and air lines.



BUSHING

Item No.	Description	MC Qty.
BF-738NL	1/4" x 1/8"	30
BF-776NL	3/8" x 1/8"	20
BF-778NL	3/8" x 1/4"	30
BF-826NL	1/2" x 1/8"	20
BF-827NL	1/2" x 1/4"	20
BF-828NL	1/2" x 3/8"	60
BF-870NL	3/4" x 1/2"	10
BF-911NL	1" x 3/4"	10



CAP

Item No.	Description	MC Qty.
BF-736NL	1/4"	60
BF-769NL	3/8"	20
BF-819NL	1/2"	20
BF-868NL	3/4"	10



COUPLING

Item No.	Description	MC Qty.
BF-706NL	1/8"	40
BF-732NL	1/4"	20
BF-760NL	3/8"	20
BF-810NL	1/2"	20
BF-862NL	3/4"	10



STREET ELBOW

Item No.	Description	MC Qty.
BF-712NL	1/8" x 1/8"	20
BF-739NL	1/4" x 1/4"	20
BF-782NL	3/8" x 3/8"	10
BF-832NL	1/2" x 1/2"	10
BF-876NL	3/4" x 3/4"	10



ELBOW

Item No.	Description	MC Qty.
BF-727NL	1/4" x 1/4" x 1/4"	10
BF-700NL	1/8" x 1/8" x 1/8"	20
BF-755NL	3/8" x 3/8" x 3/8"	10
BF-805NL	1/2" x 1/2" x 1/2"	10
BF-855NL	3/4" x 3/4" x 3/4"	10



TEE

Item No.	Description	MC Qty.
BF-704NL	1/8" x 1/8" x 1/8"	20
BF-730NL	1/4" x 1/4" x 1/4"	10
BF-758NL	3/8" x 3/8" x 3/8"	10
BF-808NL	1/2" x 1/2" x 1/2"	10
BF-858NL	3/4" x 3/4" x 3/4"	10



NIPPLE

Item No.	Description	MC Qty.
BN-715NL	1/8" x Close	60
BN-716NL	1/8" x 1-1/2"	30
BN-717NL	1/8" x 2"	20
BN-740NL	1/4" x Close	60
BN-741NL	1/4" x 1-1/2"	20
BN-742NL	1/4" x 2"	20
BN-743NL	1/4" x 2-1/2"	10
BN-746NL	1/4" x 4"	10
BN-750NL	1/4" x 6"	10
BN-785NL	3/8" x Close	20
BN-786NL	3/8" x 1-1/2"	20
BN-787NL	3/8" x 2"	10
BN-788NL	3/8" x 2-1/2"	10
BN-835NL	1/2" x Close	20
BN-836NL	1/2" x 1-1/2"	20
BN-837NL	1/2" x 2"	10
BN-838NL	1/2" x 2-1/2"	10
BN-841NL	1/2" x 4"	10
BN-845NL	1/2" x 6"	10
BN-877NL	3/4" x Close	10
BN-878NL	3/4" x 1-1/2"	10
BN-879NL	3/4" x 2"	10
BN-883NL	3/4" x 4"	10
BN-915NL	1" x Close	10
BN-919NL	1" x 3"	10
BN-721NL	1/8" x 4"	10



NIPPLE HEX

Item No.	Description	MC Qty.
BN-729NL	1/4"	20
BN-783NL	3/8"	20
BN-833NL	1/2"	10
BN-875NL	3/4"	10



PLUG

Item No.	Description	MC Qty.
BF-710NL	1/8"	60
BF-737NL	1/4"	30
BF-773NL	3/8"	60
BF-823NL	1/2"	20
BF-869NL	3/4"	10



REDUCER

Item No.	Description	MC Qty.
BF-734NL	1/4" x 1/8"	20
BF-765NL	3/8" x 1/4"	20
BF-813NL	1/2" x 1/4"	10
BF-815NL	1/2" x 3/8"	10
BF-865NL	3/4" x 1/2"	10
BF-905NL	1" x 3/4"	10



VACUUM BREAKER

Item No.	Description	MC Qty.
108-905LW	3/4"	10

BLANK PAGE



COMPRESSION

The B&K Compression Fittings are excellent for use with potable water, instrumentation hydraulic and pneumatic systems. These fittings are made to be used with aluminum, copper and plastic tubing. These fittings are not to be used for gas connections of any kind.



ADAPTER

Item No.	Description	MC Qty.
CP-155NL	3/8" FL x 3/8" C	10
CP-157NL	3/8" C x 1/4" C	20
CP-230NL	1/2" C x 3/8" C	20
CP-124NL	3/8" OD x 1/2" MPT	20
CP-154NL	1/4" x 3/8" Fine Thrd	10
CP-156NL	3/8" x 3/8" Fine Thrd	60



DISHWASHER ADAPTER

Item No.	Description	MC Qty.
CP-158NL	3/4" x 3/8"	60



CAP

Item No.	Description	MC Qty.
CP-5NL	1/4" C	20
CP-105NL	3/8" C	20
CP-205NL	1/2" C	20
CP-305NL	5/8" C	20



CONNECTOR

Item No.	Description	MC Qty.
CP-21ANL	1/8" C x 1/8" C	20
CP-21BNL	3/16" C x 1/8" C	20
CP-22NL	1/4" C x 1/8" C	10
CP-23NL	1/4" C x 1/4" C	20
CP-24NL	1/4" C x 3/8" C	20
CP-25NL	1/4" C x 1/2" C	10
CP-92DNL	5/16" C x 1/4" C	20
CP-121NL	3/8" C x 1/8" C	20
CP-122NL	3/8" C x 1/4" C	10
CP-123NL	3/8" C x 3/8" C	10
CP-220NL	1/2" C x 3/8" C	20
CP-221NL	1/2" C x 1/2" C	20
CP-324NL	5/8" C x 1/2" C	60
CP-524NL	7/8" C x 3/4" C	10



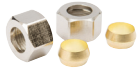
COUPLING

Item No.	Description	MC Qty.
CP-16NL	1/4" C x 1/4" C	20
CP-18NL	1/4" C x 3/8" C	20
CP-19NL	1/4" C x 1/2" C	20
CP-92CNL	5/16" C x 1/4" C	20
CP-116NL	3/8" C x 1/4" C	10
CP-117NL	3/8" C x 3/8" C	10
CP-118NL	3/8" C x 1/2" C	60
CP-218NL	1/2" C x 1/2" C	60
CP-319NL	5/8" C x 1/2" C	10
CP-15NL	1/4" C x 1/8" C	20



ELBOW

Item No.	Description	MC Qty.
CP-14NL	1/4" C	10
CP-29NL	1/4" C x 1/8" MIP	10
CP-30NL	1/4" C x 1/4" MIP	10
CP-115NL	3/8" C	20
CP-128NL	3/8" C x 1/4" MIP	20
CP-129NL	3/8" C x 3/8" MIP	60
CP-130NL	3/8" C x 1/2" MIP	10



FITTING - SLEEVE/NUT

Item No.	Description	MC Qty.
CP-108NL	3/8" C	20



NEEDLE VALVE

Item No.	Description	MC Qty.
CP-41NL	1/4" C x 1/8" MIP	60
CP-42NL	1/4" C x 1/4" C	60
CP-140NL	3/8" C	20
CP-623NL	1/4" C x 1/8" MIP	20



NUT

Item No.	Description	MC Qty.
CP-2ANL	1/8" C - 3PK	20
CP-3NL	1/4" C	20
CP-91NL	5/16" C	20
CP-103NL	3/8" C	60
CP-203NL	1/2" C	60
CP-303NL	5/8" C	60



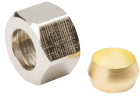
SLEEVE

Item No.	Description	MC Qty.
CP-1NL	1/4" Delrin - 3PK	60
CP-101NL	3/8" Delrin - 3PK	60
CP-202NL	1/2" OD - 3PK	60
CP-302NL	5/8" OD - 3PK	60
CP-2NL	1/4" OD Brass - 3PK	60
CP-90NL	5/16" OD Brass - 3PK	20
CP-102NL	3/8" OD Brass - 3PK	60
CP-402ANL	3/4" OD Brass - 3PK	20



SLEEVE & INSERT

Item No.	Description	MC Qty.
CP-8NL	1/4" Delrin	60
	Sleeve/Insert - 2PK	
CP-107NL	3/8" Delrin	10
	Sleeve/Insert - 2PK	
CP-165SCNL	5/16" Delrin	20
	Sleeve/Insert - 2PK	
CP-173SCNL	1/2" Delrin	20
	Sleeve/Insert - 2PK	



NUT & INSERT

Item No.	Description	MC Qty.
CP-4NL	1/4" Brass Nut with Insert	10
CP-92NL	5/16" Brass Nut with Insert	20
CP-104NL	3/8" Brass Nut with Insert	10
CP-204NL	1/2" Brass Nut with Insert	20



TEE

Item No.	Description	MC Qty.
CP-12NL	1/4" C	20
CP-114NL	3/8" C	20
CP-113NL	3/8" x 3/8" x 1/4"	20



UNION

Item No.	Description	MC Qty.
CP-9ANL	1/8" OD	20
CP-10NL	1/4" OD	10
CP-109NL	3/8" x 1/4"	10
CP-110NL	3/8" OD	10
CP-209NL	1/2" x 3/8"	10
CP-210NL	1/2" OD	10
CP-309NL	5/8" C x 3/8" C	20
CP-310NL	5/8" OD	20
CP-318NL	5/8" C x 3/8" C	10
CP-92ANL	5/16" OD	10
CP-92BNL	5/16" C x 1/4" C	10



SADDLE VALVE

Item No.	Description	MC Qty.
CP-50NL	1/4"	10
CP-141NL	3/8"	10



ADAPTER TEE

Item No.	Description	MC Qty.
AV-666NL	3/8" x 3/8" x 3/8"	10



FLARE

The B&K Flare fittings are designed for higher pressure applications and are commonly used for gasoline, grease, oil, water, vacuum, airlines, L.P. and natural gas. Flare fittings can also be used for refrigeration, air conditioning and other applications involving hard to hold liquids and gases using forged nuts.

Recommended for use with copper, brass, aluminum and welded steel hydraulic tubing that can be flared. We recommend to not use flare fittings with polybutylene or soft plastic tubing.



CAPS

Item No.	Description	MC Qty.
FL-63	1/4"	60
FL-163	3/8"	20
FL-263	1/2"	20
FL-342	5/8"	10



COUPLINGS

Item No.	Description	MC Qty.
FL-73	1/4" FL x 1/8" FL	20
FL-75	1/4" FL x 1/4" FL	20
FL-76	1/4" FL x 3/8" FL	20
FL-76SF	5/16" FL x 1/4" FL	20
FL-175	3/8" FL x 1/4" FL	20
FL-176	3/8" FL x 3/8" FL	20
FL-177	3/8" FL x 1/2" FL	20
FL-273	1/2" FL x 1/2" FL	10
FL-274	1/2" FL x 3/8" FL	10
FL-360	5/8" FL x 1/2" FL	20



ELBOWS

Item No.	Description	MC Qty.
FL-81A	1/4" FL x 1/8" MIP	20
FL-168B	3/8" FL x 3/8" FIP	20
FL-169	3/8" FL x 3/8" FL	10
FL-186B	3/8" FL x 1/2" MIP	20
FL-272	1/2" FL x 1/2" FL	10
FL-186	3/8" FL x 3/8" MIP	10
FL-279	1/2" FL x 1/2" FIP	20
FL-280	1/2" FL x 3/8" MIP	10
FL-281	1/2" FL x 1/2" MIP	10
FL-462SF	1/2" FL x 3/8" FIP	20



FITTINGS

Item No.	Description	MC Qty.
FL-55	1/4" FL x 1/4" C	60
FL-64	1/4" FL x 1/4" C	20
FL-164	3/8" FL x 3/8" C	10
FL-283	1/2" FL x 1/2" C	20



NUT

Item No.	Description	MC Qty.
FL-60	1/4" FL	60
FL-80SF	5/16" FL	20
FL-160	3/8" FL	20
FL-260	1/2" FL	20
FL-335	5/8" FL	10
FL-161	3/8" FL - Fine Thread	60
FL-162	3/8" FL - Forged	20
FL-262	1/2" FL - Forged	20
FL-338	5/8" FL - Forged	10



PLUGS

Item No.	Description	MC Qty.
FL-59	1/4" FL	20
FL-159	3/8" FL	20
FL-259	1/2" FL	10



TEE

Item No.	Description	MC Qty.
FL-68	1/4" FL	20
FL-168	3/8" FL	10
FL-271	1/2" FL	10



UNION

Item No.	Description	MC Qty.
FL-65	1/4" FL	20
FL-165	3/8" FL	10
FL-268SF	5/16" FL	20
FL-269	1/2" FL	10



UNION HALF

Item No.	Description	MC Qty.
FL-79	1/4" FL x 1/8" FL	20
FL-80	1/4" FL x 1/4" FL	20
FL-80D	5/16" FL x 1/8" FL	20
FL-80E	5/16" FL x 1/4" FL	20
FL-80F	3/8" FL x 1/8" FL	20
FL-181	3/8" x 1/2" Fine Thread	20
FL-182	3/8" x 1/4"	20
FL-183	3/8" x 3/8"	20
FL-184	3/8" x 1/2"	10
FL-276	1/2" x 3/8"	10
FL-277	1/2" x 1/2"	10
FL-370	5/8" x 1/2"	10
FL-371	5/8" x 3/4"	10



SHUTOFF VALVE

Item No.	Description	MC Qty.
FL-189	3/8" FL x 1/2" FIP	10

BLANK PAGE



GARDEN HOSE FITTINGS

The Garden Hose Fittings are ideal for use with the standard garden hose (3/4"). Many garden hose fittings are offered in standard adapter and connector styles as well as a swivel model. The swivel garden hose fittings allow the hose to spin freely of the threaded connection and prevent accidental disconnection as well as hose binding and kinking issues.



BARBED ADAPTER

Item No.	Description	MC Qty.
GH-491	5/8" x 3/8"	10
GH-492	5/8" x 3/4"	10
GH-593	3/4" x 3/4"	10



SWIVEL ADAPTER

Item No.	Description	MC Qty.
GH-660	3/4" x 1/2"	10
GH-661	3/4" x 3/4"	10
GH-662	3/4"	10



THREADED HOSE ADAPTER

Item No.	Description	MC Qty.
GH-663	3/4" FHT x 1/2" MIP	10
GH-665	3/4" x 3/4" x 1/2"	10
GH-668	3/4" MHT x 1/2" FIP	10
GH-669	3/4" MHT x 3/4" FIP	10
GH-672	3/4" FHT x 1/2" FIP	10
GH-673	3/4" FHT x 3/4" FIP	10
GH-677	3/4" FHT x 1/2" MIP	10
GH-679	3/4" x 1/2"	10
GH-680	3/4" MHT	10



BARBED ADAPTER

Item No.	Description	MC Qty.
GH-683	3/4" x 3/8"	10
GH-684	3/4" x 1/2"	10



HOSE CAP

Item No.	Description	MC Qty.
GH-685	3/4"	20



HOSE WYE CONNECTOR

Item No.	Description	MC Qty.
GH-695	3/4" Brass	10



COMP HOSE CONNECTOR

Item No.	Description	MC Qty.
GH-696	3/4" FHT x 1/4" C	10



BRASS & NYLON BARB FITTINGS

Our barb offering includes fitting that are brass, CPVC and nylon.

This category has adapters, splicers, tees and elbows. These fittings are widely used in water purification, food, beverage and pneumatic systems. They can be used with copper, polyethylene, PEX and CPVC tubing.



BRASS BARBED ADAPTER

Item No.	Description	MC Qty.
BHB-85NL	1/8" Barb x 1/4" MIP	20
BHB-96NL	3/16" Barb x 1/4" MIP	20
BHB-192NL	1/4" Barb x 1/4" MIP	20
BHB-192BNL	1/4" Barb x 1/8" MIP	20
BHB-193NL	1/4" Barb x 3/8" MPT	20
BHB-193CNL	1/4" Barb x 1/2" MIP	20
BHB-197ANL	1/4" Barb x 1/8" FIP	20
BHB-201NL	5/16" Barb x 1/4" MIP	20
BHB-201BNL	5/16" Barb x 1/4" MIP	20
BHB-293NL	3/8" Barb x 1/4" MIP	20
BHB-294NL	3/8" Barb x 3/8" MIP	20
BHB-298NL	3/8" Barb x 3/8" FIP	20
BHB-298CNL	3/8" Barb x 1/2" FIP	20
BHB-300ANL	3/8" Barb x 1/2" MIP	20
BHB-385NL	1/2" Barb x 1/2" MIP	20
BHB-385SHNL	1/2" Barb x 3/4" MIP	20
BHB-493NL	5/8" Barb x 1/2" MIP	10
BHB-495NL	5/8" Barb x 3/4" MIP	10
BHB-197NL	1/4" Barb x 1/4" FIP	60
BHB-390NL	1/2" Barb x 1/2" FIP	10
BHB-396NL	1/2" MIP x 3/4" Barb	10



BRASS HOSE SPLICER

Item No.	Description	MC Qty.
BHB-95NL	3/16" x 3/16"	60
BHB-190NL	1/4" ID	60
BHB-201ANL	5/16" ID	60
BHB-290NL	3/8" ID	30
BHB-380NL	1/2" ID	20
BHB-490NL	5/8" ID	20



CPVC HOSE SPLICER

Item No.	Description	MC Qty.
BHB-195	1/4" x 1/4"	60
BHB-382	1/2" x 1/2"	60



NYLON SPLICER

Item No.	Description	MC Qty.
NHB-480	5/8"	40
NHB-585	3/4"	30
NHB-620	1"	20
NHB-630	1-1/4"	10
NHB-640	1-1/2"	10



NYLON TEE

Item No.	Description	MC Qty.
NHB-191	1/4" x 1/4" x 1/4"	60
NHB-291	3/8" x 3/8" x 3/8"	60
NHB-381	1/2" x 1/2" x 1/2"	40



NYLON BARBED ELBOW

Item No.	Description	MC Qty.
NHB-295	3/8" x 1/4"	60
NHB-296	3/8" x 1/2"	40
NHB-394	1/2" x 1/2"	40
NHB-395	1/2" x 3/4"	30



NYLON BARBED FITTING

Item No.	Description	MC Qty.
NHB-193	1/4" Barb x 1/2" MIP	40
NHB-300	3/8" Barb x 1/4" MIP	40
NHB-387	1/2" Barb x 1/2" MIP	40
NHB-590	3/4" Barb x 3/4" MIP	30
NHB-591	3/4" Barb x 3/4" MIP	40
NHB-635	1-1/4" Barb x 1" MIP	20
NHB-645	1-1/2" Barb x 1/2" MIP	10



THREADED UNION FITTING

Item No.	Description	MC Qty.
NHB-187A	1/2"	10
NHB-187B	3/4"	10



PUSH FIT

The B&K Push Fit Fittings provide for simple installations and long-lasting reliability. These fittings are best when used for air, copper tubing, ice makers, PEX, polyethelene, tubing water and water softener. The instant connection of these fittings allow these to be a convenient solution to your joining needs.



COUPLING

Item No.	Description	MC Qty.
640-011BG	1/4" OD x 1/4" OD	60
640-024BG	5/16" OD x 5/16" OD	60
640-025BG	5/16" OD x 1/4" OD	60
640-022BG	3/8" OD x 3/8" OD	60
640-021BG	3/8" OD x 1/4" OD	60
640-133BG	1/2" OD x 1/2" OD	60



ADAPTER

Item No.	Description	MC Qty.
640-310BG	1/4" OD x 1/8" MIP	60
640-311BG	1/4" OD x 1/4" MIP	60
640-312BG	1/4" OD x 3/8" MIP	60
640-313BG	1/4" OD x 1/2" MIP	60
640-321BG	3/8" OD x 1/4" MIP	60
640-322BG	3/8" OD x 3/8" MIP	60
640-323BG	3/8" OD x 1/2" MIP	60
640-432BG	1/2" OD x 3/8" MIP	60
640-433BG	1/2" OD x 1/2" MIP	60
640-310BG	1/4" OD x 1/4" FIP	60
640-302BG	3/8" OD x 1/4" FIP	60



ELBOW

Item No.	Description	MC Qty.
641-011BG	1/4" OD x 1/4" OD	60
641-211BG	1/4" OD x 1/4" MIP	60
641-022BG	3/8" OD x 3/8" OD	60
641-221BG	3/8" OD x 1/4" MIP	60
641-222BG	3/8" OD x 3/8" MIP	60
641-234BG	1/2" OD x 3/8" MIP	30



STRAIGHT VALVE

Item No.	Description	MC Qty.
644-100BG	1/4" OD x 1/4" OD	60
644-411BG	1/4" OD x 1/4" MIP	60
644-111BG	3/8" OD x 3/8" OD	20
644-422BG	3/8" OD x 3/8" MIP	20



TEE

Item No.	Description	MC Qty.
642-000BG	1/4" x 1/4" x 1/4"	60
642-111BG	3/8" x 3/8" x 3/8"	60
642-001BG	1/2" x 1/2" x 1/2"	20



CAP FITTING

Item No.	Description	MC Qty.
643-000BG	1/4"	60

BLANK PAGE
INSIDE BACK COVER

