

Breakers and Switches

Switches for PV applications OTDC and OT

Disconnect switches

OTDC16...250, OT315...630

Contents

Product overview	4 - 7
Switches for photovoltaic applications	8 - 9
Technical data.....	10 - 11
Ordering information	
Front operated disconnect switches.....	12 - 15
Accessories.....	16 - 23
Dimensions	24 - 27

Disconnect switches up to 1000 VDC

Disconnect switches^①



Catalog number	OT40FD9N2	OT80FD8	OTDC100U11
General purpose amp rating	28	55	100
Max operating voltage	600 VDC	600 VDC	1000 VDC
Approvals	UL508	UL508	UL98B



Catalog number	OTDC100U02	OTDC100US02	OTDC100US11
General purpose amp rating	100	100	100
Max operating voltage	1000 VDC	1000 VDC	1000 VDC
Approvals	UL98B	UL98B	UL98B

^① Lugs are integral to the switch for 16-80A. No separate lug kit accessory is required.



Catalog number	OTDC180US2	OTDC200U02	OTDC200US02
General purpose amp rating	180	200	200
Max operating voltage	1000 VDC	1000 VDC	1000 VDC
Approvals	UL98B	UL98B	UL98B



Catalog number	OTDC200U11	OTDC200US11
General purpose amp rating	315	400
Max operating voltage	1000 VDC	1000 VDC
Approvals	UL98B	UL98B

Disconnect switches up to 1000 VDC

Disconnect switches



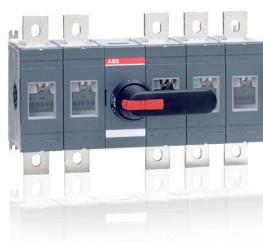
Catalog number	OTDC16F3/OTDC25F3/ OTDC32F3	OTDC16F4/OTDC25F4/ OTDC32F4
General purpose amp rating	16/25/32	16/25/32
Max operating voltage	1000 VDC	1000 / 2x660 VDC
Approvals	IEC	IEC



Catalog number	OTDC16F2/OTDC25F2/ OTDC32F2
General purpose amp rating	16/25/32
Max operating voltage	660 VDC
Approvals	IEC



Catalog number	OT315E23	OT315E33	OT400E23
General purpose amp rating	315	315	400
Max operating voltage	800 VDC	1000 VDC	800 VDC
Approvals	IEC	IEC	IEC



Catalog number	OT400E33	OT630E23	OT630E33
General purpose amp rating	400	630	630
Max operating voltage	1000 VDC	800 VDC	1000 VDC
Approvals	IEC	IEC	IEC

Switches for photovoltaic applications

Up to 1000 VDC



ABB's switch offering for PV applications

The switch offering includes disconnect switches designed for photovoltaic applications. Disconnect switches are typically used to isolate individual strings or arrays of solar panels and battery banks. They can also be used as the main switch for the whole photovoltaic system.

ABB's switches are compact in size, have high DC voltage ratings and unique safety features. The range goes from 16 to 630 Amperes.

OTDC16...32 Amperes

OTDC from 16...32 Amperes have various DC voltage ratings within the same footprint area. Thanks to its modular design the rated operational voltage can be scaled according to your needs, up to 1000 V, IEC.

- ▶ Reliable PV systems at a wide voltage range

OTDC disconnect switches can be DIN rail or screw mounted. Tunnel terminals capture fine stranded wires and they are wide enough to allow wires up to 16 mm². Short-circuit bars are pre-installed as standard.

- ▶ Simple and fast installation

OTDC...32 switches meet the standard's thermal requirements, even in exceptionally high operating ambient temperatures. The power losses are very low, minimizing the waste of energy.

- ▶ Suitable for warm locations
- ▶ Maximum energy efficiency of PV systems

OTDC100...250 Amperes

OTDC switches from 100...250 Amperes are the only 2-pole solution in the market with an operational voltage of 1000 VDC. This is possible thanks to carefully optimized arc plates and dual magnetic breaking.

- ▶ Breaking power optimized across the entire current range

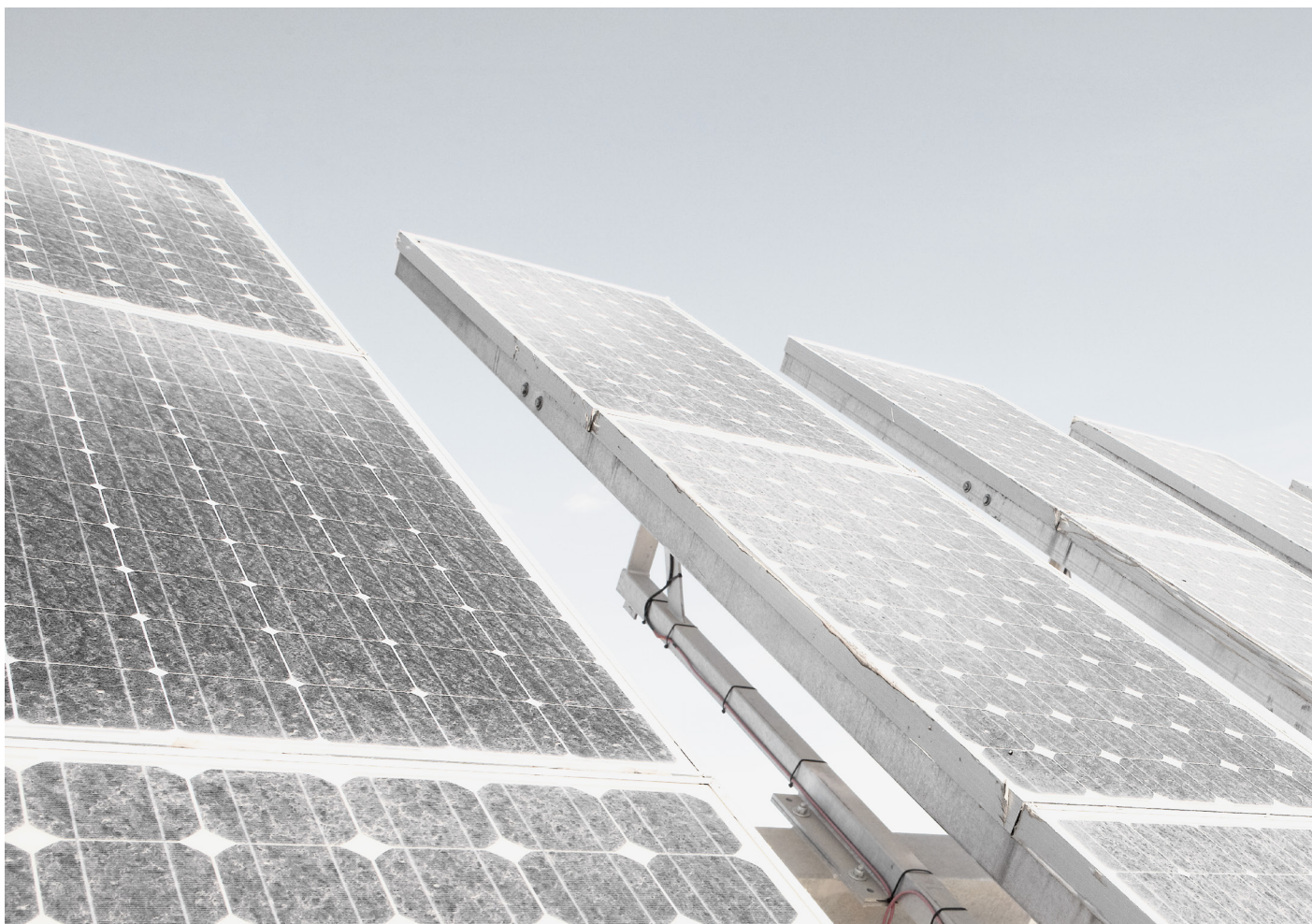
As a result of a symmetric design, the connections are independent of polarity. The switch works in both ways.

- ▶ Simplicity in installation

OTDC is the only DC switch in the market that has visible contacts. The operation of the switch is not vulnerable to voltage peaks and it is independent of the user (quick make-quick brake).

- ▶ Safe and reliable operation

ABB offers a whole range of products dedicated to photovoltaic applications, able to fulfill all installation requirements: from the strings on the direct current side to the grid connection point on the alternate current side.



Technical data

OTDC16...160, OTDC100...OT80

Technical data according to IEC 60947 for disconnect switches OTDC and OT

Switch size		A	OTDC16	OTDC25	OTDC32	OTDC100	OTDC160
Rated insulation voltage U_i	Pollution degree 2	V	1250 ¹⁾	1250 ¹⁾	1250 ¹⁾	1500	1500
	Pollution degree 3	V	1000 ¹⁾	1000 ¹⁾	1000 ¹⁾	1500	1500
Dielectric strength	50 Hz 1 min	kV	6	6	6		
Rated impulse withstand voltage		kV	8	8	8	12	12
Rated thermal current I_{th}	In open air, normal conditions ²⁾	A	25	32	45	100	160
	In enclosure 40°C	A	25	32	45	100	160
	In enclosure 60°C	A	25	32	32	80	125
... with minimum cable or bar cross section	Cu	mm ²	4	6	10	35	70
Rated operational current / poles in series	500 V	A				100/1	160/1
	DC-21B						
	660 V	A	16/2	25/2	32/2		
	800 V						
Rated short-time withstand current, 1000 V, 1 s	1000 V	A	16/3	25/3	32/3	100/2	160/2
	1000 V / 2x660 V ³⁾	A	16/4	25/4	32/4		
Rated short circuit making capacity, 1000 V	R.M.S. -value I_{FW}	kA	0.4	0.6	0.8	5	5
	Peak value I_{cm}	kA				5	5
Power loss / pole	Max. distance from switch frame to nearest busbar / cable support	mm				150	150
	At rated current	W	0.15	0.3	0.5	2	4
Cable size	Cu	mm ²	2.5...16	2.5...16	2.5...16		
Terminal bolt size	Metric thread diameter × length	mm				M8x25	M8x25
Terminal tightening torque	Counter torque required	Nm				15-22	15-22

¹⁾ When used with external handle. For use with direct mounted handle, see installation instructions for restrictions

²⁾ Normal conditions defined in IEC 60947-1-6.1

³⁾ 1000 V with all the poles connected in series, 600 V with 2 poles in series

Technical data in accordance to UL98B for disconnect switches

Suitable for use in Photovoltaic Systems in accordance with Article 690 of the NEC.

Switch size		OT40	OT80	OTDC100 ①	OTDC180	OTDC200
Voltage rating	VDC	600	600	1000	1000	1000
Current rating	A	28	55	100①	2x180	200
Rated ambient temperature	°C	-40...+40	-40...+40	-20...+50	-20...+50	-20...+50
Short circuit rating at 1000 VDC	kA	–	–	5	5	5
	Class of fuse	–	–	–	Circuit breaker	Circuit breaker
Mechanical endurance	Divide by two for operation cycles	Oper.	20,000	20,000	20,000	20,000
Wire range	AWG	#18-14	#18-14	#4-300 MCM	#4-300 MCM	#4-300 MCM

① For four pole 2 x 100

Technical data

OTDC200...OT630

Switch size		A	OTDC200	OTDC250	OT315	OT400	OT630
Rated insulation voltage U_i	Pollution degree 2	V	1500	1500	1 000	1 000	1 000
	Pollution degree 3	V	1500	1500	1 000	1 000	1 000
Dielectric strength	50 Hz 1 min	kV			10	10	10
Rated impulse withstand voltage		kV	12	12	12	12	12
Rated thermal current I_{th}	In open air, normal conditions ²⁾	A	200	250	315	400	630
	In enclosure 40°C	A	200	250	315	400	630
	In enclosure 60°C	A	160	200	280	320	500
...with minimum cable or bar cross section	Cu	mm ²	95	120	185	240	2x185
Rated operational current / poles in series	500 V	A	200/1	250/1			
DC-21B	550 V				315/4	400/4	600/4
	660 V	A					
	800 V				315/5	400/5	600/5
	1000 V	A	200/2	250/2	315/6	400/6	600/6
	1000 V / 2x660 V ³⁾	A					
Rated short-time withstand current, 1000 V, 1 s	R.M.S. -value I_{cw}	kA	5	5	15	15	20
Rated short circuit making capacity, 1000 V	Peak value I_{cm}	kA	5	5			
	Max. distance from switch frame to nearest busbar / cable support	mm	150	150			
Power loss / pole	At rated curren	W	6	9.5	6.5	10	25
Cable size	Cu	mm ²					
Terminal bolt size	Metric thread diameter × length	mm	M8x25	M8x25	M10x30	M10x30	M12x40
Terminal tightening torque	Counter torque required	Nm	15-22	15-22	30-44	30-44	50-75

Ordering information

Front operated disconnect switches

OTDC16...32F2



Disconnect switches OTDC_, base or DIN-rail mounting

Types OTDC16...32 include protected terminal clamps, IP20. Shafts and handles need to be ordered separately. The type and the ordering numbers are for one piece.

Disconnect switches OT_ – base or DIN rail mounting, UL98B

OTDC16...32F3



Number of poles Up to 600VDC	Rated operat. current [A]	Catalog number	Weight/ unit [kg]
9	28	OT40FD9N2	
8	55	OT80FD8	

OTDC16...32F4



Up to 660 VDC, IEC

Number of poles	I_{th} (open) [A]	Rated operat. current [A] DC 21B / 660 V	Catalog number	Weight/ unit [kg]
2	25	16	OTDC16F2	0.15
2	32	25	OTDC25F2	0.15
2	45	32	OTDC32F2	0.15

Up to 1000 VDC, IEC

Number of poles	I_{th} (open) [A]	Rated operat. current [A] DC 21B / 1000 V	Catalog number	Weight/ unit [kg]
3	25	16	OTDC16F3	0.20
3	32	25	OTDC25F3	0.20
3	45	32	OTDC32F3	0.20

Up to 1000 VDC or 2x660 VDC¹⁾, IEC

Number of poles	I_{th} (open) [A]	Rated operat. current [A] DC 21B / 1000 V	Catalog number	Weight/ unit [kg]
4	25	16	OTDC16F4	0.25
4	32	25	OTDC25F4	0.25
4	45	32	OTDC32F4	0.25

¹⁾ 1000 V with all poles in series, 660 V with 2 poles in series

Ordering information

Front operated disconnect switches

OTDC16...32FT2



Disconnect switches OTDC_, door mounting

Types OTDC16...32 include protected terminal clamps, IP20. Shafts and handles need to be ordered separately. The type and the ordering numbers are for one piece.

Up to 660 VDC, IEC

Number of poles	I_{th} (open) [A]	Rated operat. current [A] DC 21B / 660 V	Catalog number	Weight/unit [kg]
2	25	16	OTDC16FT2	0.15
2	32	25	OTDC25FT2	0.15
2	45	32	OTDC32FT2	0.15

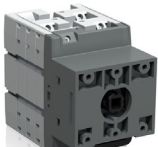
OTDC16...32FT3



Up to 1000 VDC, IEC

Number of poles	I_{th} (open) [A]	Rated operat. current [A] DC 21B / 1000 V	Catalog number	Weight/unit [kg]
3	25	16	OTDC16FT3	0.20
3	32	25	OTDC25FT3	0.20
3	45	32	OTDC32FT3	0.20

OTDC16...32FT4



Up to 1000 VDC or 2x660 VDC¹⁾, IEC

Number of poles	I_{th} (open) [A]	Rated operat. current [A] DC 21B / 1000 V	Catalog number	Weight/unit [kg]
4	25	16	OTDC16FT4	0.25
4	32	25	OTDC25FT4	0.25
4	45	32	OTDC32FT4	0.25

¹⁾ 1000 V with all poles in series, 660 V with 2 poles in series

Ordering information

Front operated disconnect switches

OTDC100...200US02



Disconnect switches OTDC_, UL-types, base mounting

Up to 1000 VDC

Including terminal bolt kit, the handle and shaft have to be ordered separately, see pages 18...19. OTDC100...200US02 types are equipped with a short circuit link.

OTDC100...200U02



Number of poles	Rated current [A] UL98B, 1000 V	Catalog number	Weight/unit [kg]
-----------------	------------------------------------	----------------	------------------

Mechanism at the end of the switch, includes the short circuit link

2	100	OTDC100US02	1.2
2	200	OTDC200US02	1.2

Mechanism at the end of the switch

2	100	OTDC100U02	1.1
2	200	OTDC200U02	1.1

OTDC100...200US11



Mechanism between the poles, includes the short circuit link

2	100	OTDC100US11	1.2
4	100	OTDC100US22	2.4
4	180	OTDC180US22	2.4
2	200	OTDC200US11	1.2

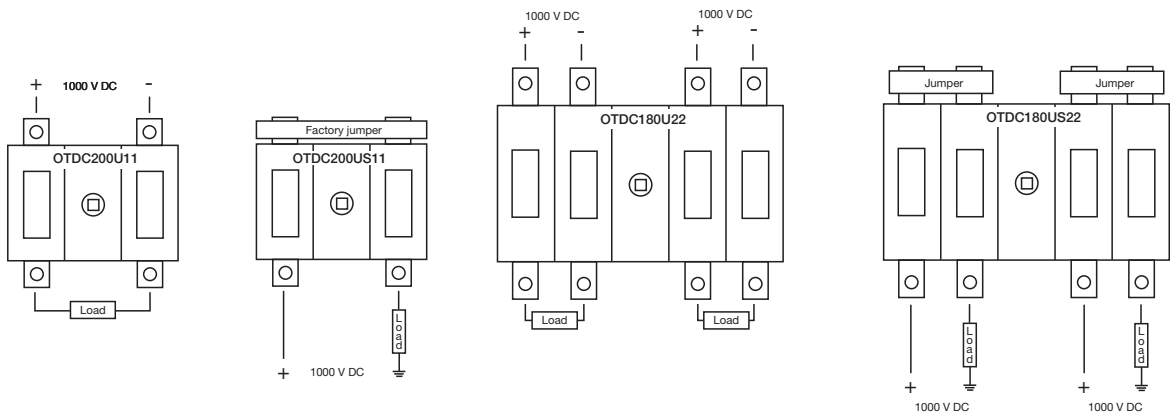
Mechanism between the poles

2	100	OTDC100U11	1.1
2	200	OTDC200U11	1.1

OTDC100...200U11



Wiring diagrams



Ordering information

Front operated disconnect switches

OT315...400E23



Disconnect switches OTDC_ and OT_, base mounting

Up to 800 VDC, IEC

Types OT315...630 including terminal bolt kit, a black ON-OFF plastic handle and shaft as standard, base mounting. The handle is IP65 protected, padlockable in the OFF-position and with door interlock in the ON-position. The shaft is adjustable for a depth of installation ranges.

OT630E23



Number of poles	I_{th} (open) [A]	Rated operat. current [A] DC 21 / 800 V	Catalog number	Weight/unit [kg]
-----------------	---------------------	---	----------------	------------------

Mechanism between the poles

5	315	315	OT315E23	4.4
5	400	400	OT400E23	4.4
5	630	600	OT630E23	7.8
5	630	600	OT630E2	7.8

OT630E23



Up to 1000 VDC, IEC

Types OTDC100...250 including terminal bolt kit, the handle and shaft have to be ordered separately, see pages 18...19. Types OT315...630 including terminal bolt kit, a black ON-OFF plastic handle and shaft as standard. The handle is IP65 protected, padlockable in the OFF-position and with door interlock in the ON-position. The shaft is adjustable for a depth of installation ranges.

OTDC100...250E02



Number of poles	I_{th} (open) [A]	Rated operat. current [A] DC 21 / 1000 V	Catalog number	Weight/unit [kg]
-----------------	---------------------	--	----------------	------------------

Mechanism at the end of the switch

2	100	100	OTDC100E02	1.1
2	160	160	OTDC160E02	1.1
2	200	200	OTDC200E02	1.1
2	250	250	OTDC250E02	1.1

OT315-400E33



Mechanism between the poles

6	315	315	OT315E33	4.4
6	400	400	OT400E33	4.4
6	630	600	OT630E33	11.3
6	630	600	OT630E33	11.3

OT630E33



OT630E33



Ordering information

Accessories

OH_1_
S00395A



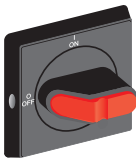
Selector type handles for base and DIN-rail mounted switches

Indication I-O and ON-OFF, for shaft diameter 6 mm, door drilling 22.5 mm.
The catalog numbers are for one piece.

OH_3_
S00687A



OH_2_
S00396A



OHBS2_AJEH



Color	Catalog number
IP 54 handles, NEMA 1, suitable for switches OTDC16...32F	
Black	OHBS1AH
Yellow-red	OHYS1AH
Silver	OHSS1AH
Grey	OHGS1AH
Door interlock in ON-position.	
Black	OHBS1AH1
Yellow-red	OHYS1AH1
Silver	OHSS1AH1
Grey	OHGS1AH1
Padlockable with one padlock with bail diameter 5...6.3 mm.	
Black	OHBS3AH
Yellow-red	OHYS3AH
Silver	OHSS3AH
Grey	OHGS3AH
Padlockable with one padlock with bail diameter 5...6.3 mm, door interlock in ON-position.	
Black	OHBS3AH1
Yellow-red	OHYS3AH1
Silver	OHSS3AH1
Grey	OHGS3AH1
IP 65 handles, NEMA 1, 3R, 12, suitable for switches OTDC16...32F	
Padlockable with max. 3 padlocks with bail diameter 5...8 mm, door interlock in ON-position, defeatable.	
Black	OHBS2AJ
Yellow-red	OHYS2AJ
Silver	OHSS2AJ
Grey	OHGS2AJ
Padlockable with max. 3 padlocks with bail diameter 5...8 mm, door interlock in ON-position.	
Black	OHBS2AJ1
Yellow-red	OHYS2AJ1
Silver	OHSS2AJ1
Grey	OHGS2AJ1
Selector type handle with metal hasp	
IP65 handles, NEMA 1, 3R, 12, suitable for switches OTDC16...32F	
Padlockable with max. 3 padlocks, door interlock in the ON-position, defeatable.	
Black	OHBS2AJEH

Ordering information

Accessories

OH_1_
S00395A



Selector type handles, for door mounted switches

Indication I-O and ON-OFF. No separate shaft needed.
The catalog numbers are for one piece.

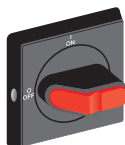
OH_3_
S00687A



Snap-on mounting, door drilling 22,5 mm, for OTDC16...32FT No padlocking, IP54, NEMA 1

Color	Catalog number
Black	OHBS1PH
Red-yellow	OHYS1PH
Silver	OHSS1PH
Grey	OHGS1PH

OH_2_
S00396A



Padlockable with one padlock, IP54, NEMA 1

Black	OHBS3PH
Red-yellow	OHYS3PH
Silver	OHSS3PH
Grey	OHGS3PH

Padlockable with max. 3 padlocks, IP65, NEMA 1, 3R, 12

Black	OHBS2PJ
Red-yellow	OHYS2PJ
Silver	OHSS2PJ
Grey	OHGS2PJ

Screw mounting, hole distance 36 mm, for OTDC16...32FT

No padlocking, IP54, NEMA 1

Black	OHBS1RH
Red-yellow	OHYS1RH
Silver	OHSS1RH
Grey	OHGS1RH

Padlockable with one padlock, IP54, NEMA 1

Black	OHBS3RH
Red-yellow	OHYS3RH
Silver	OHSS3RH
Grey	OHGS3RH

Padlockable with max. 3 padlocks, IP65, hole distance 36/48 mm, NEMA 1, 3R, 12

Black	OHBS2RJ
Red-yellow	OHYS2RJ
Silver	OHSS2RJ
Grey	OHGS2RJ

Ordering information

Accessories

OHY_
S00836A



Pistol type handles

OH_ handles: IP 65, NEMA 1,3R, 12

Padlockable with three padlocks in OFF-position, door interlock in ON-position. Screw fixing from the back side of the handle. No screws on the front ensures double insulation. The type and the ordering numbers are for one piece.

OHB_
S00601A



OHB_P
S02195A



Color	Handle length [mm]	Suitable for switches	Catalog number	Weight/unit [kg]
For shaft diameter 6 mm, indication in types OHB and OHY: I-0, ON-OFF, in types OHG: I-0.				
Black	65	OTDC100...250_	OHB65J6	0.12
Yellow-red	65	OTDC100...250_	OHY65J6	0.12
Grey	65	OTDC100...250_	OHG65J6	0.12
Black	80	OTDC100...250_	OHB80J6	0.14
Yellow-red	80	OTDC100...250_	OHY80J6	0.14
Grey	80	OTDC100...250_	OHG80J6	0.14
For shaft diameter 6 mm, indication: Test-OFF-ON/Test-0-I				
Black	65	OTDC100...250_	OHB65J6T	0.12
Yellow-red	65	OTDC100...250_	OHY65J6T	0.12
For shaft diameter 12 mm, indication OHB and OHY: I-0, ON-OFF, in types OHG: I-0				
Black	95	OT315...400_	OHB95J12	0.16
Yellow-red	95	OT315...400_	OHY95J12	0.16
Grey	95	OT315...400_	OHG95J12	0.16
Black	125	OT630_	OHB125J12	0.17
Yellow-red	125	OT630_	OHY125J12	0.17
Grey	125	OT630_	OHG125J12	0.17
Black	145	OT630_	OHB145J12	0.17
Yellow-red	145	OT630_	OHY145J12	0.17
Grey	145	OT630_	OHG145J12	0.17
Black	2x150	OT630_	OHB150J12P	0.35
For shaft diameter 12 mm, indication: Test-OFF-ON/Test-0-I				
Black	95	OT315...400	OHB95J12T	0.16
Yellow-red	95	OT315...400	OHY95J12T	0.16
Black	125	OT630_	OHB125J12T	0.17
Yellow-red	125	OT630_	OHY125J12T	0.17

Door interlocking in ON-position means that the door can not be opened, when the handle is in ON-position.

This can be defeated in IP65 types to allow authorized personnel access for inspection.

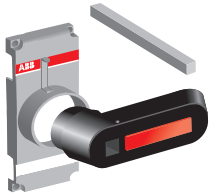
NEMA 4, 4x pistol handles available on request.

Handles padlockable in all positions available on request.

Ordering information

Accessories

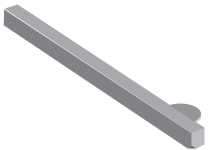
OT_V_
S01997A



Handles for direct mounting

Color	Handle length [mm]	Suitable for switches	Catalog number	Weight/unit [kg]
Indication Test-OFF-ON/Test-O-I.				
Padlockable with three padlocks in OFF-position. Includes shaft and mechanism cover.				
Black	65	OTDC100...250	OTDV250EK	0.10
Red-yellow	65	OTDC100...250	OTDYY250EK	0.10
Black	95	OT315...400	OTV400EK	0.20
Red-yellow	95	OT315...400	OTVY400EK	0.20
Black	125	OT630...800	OTV800EK	0.30
Red-yellow	125	OT630...800	OTVY800EK	0.30

OXS6X_
S01026A

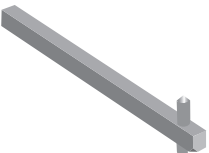


Extended shafts

The type and ordering numbers are for one piece.

Shaft length [mm]	H [mm]	Catalog number	Weight/unit [kg]
For selector type handles			
Suitable for switches OTDC16...32F, shaft diameter 6 mm			
85	See dimension drawings	OXS6X85	0.02
105		OXS6X105	0.02
120		OXS6X120	0.03
130		OXS6X130	0.03
160		OXS6X160	0.04
180		OXS6X180	0.04
250		OXS6X250	0.05
330		OXS6X330	0.05

OSP6X_
S00050A



For pistol type handles

Suitable for switches OTDC100...250_, shaft diameter 6 mm ¹⁾

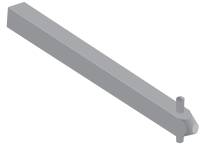
130	109...174	OSP6X130	0.04
150	129...194	OSP6X150	0.05
161	140...205	OSP6X161	0.05
210	189...254	OSP6X210	0.06
290	269...334	OSP6X290	0.08

¹⁾ Longer shafts on request

Ordering information

Accessories

OXP12X_
S00047A



Extended shafts

The catalog numbers are for one piece.

Shaft length [mm]	 [mm]	Catalog number	Weight/unit [kg]
-------------------	--	----------------	------------------

For pistol type handles

Suitable for switches OT315...400_, shaft diameter 12 mm

166	146...226	OXP12X166	0.2
185	165...245	OXP12X185	0.2
250	230...310	OXP12X250	0.28
280	260...340	OXP12X280	0.3
325	305...385	OXP12X325	0.36
395	445...525	OXP12X395	0.43
465	439...519	OXP12X465	0.51
535	515...595	OXP12X535	0.59

Suitable for switches OT630_, shaft diameter 12 mm

250	230...345	OXP12X250	0.28
280	260...375	OXP12X280	0.3
325	305...420	OXP12X325	0.36
395	375...490	OXP12X395	0.43
465	445...560	OXP12X465	0.51
535	515...630	OXP12X535	0.59

Suitable for switches OT630E_P31 with OHB150J12P handle, shaft diameter 12 mm

250	222...336	OXP12X250	0.28
280	252...366	OXP12X280	0.3
325	297...411	OXP12X325	0.36
395	367...481	OXP12X395	0.43
465	437...551	OXP12X465	0.51
535	507...621	OXP12X535	0.59

Ordering information

Accessories

OXP_-45
S00669A



Extended shafts

Twisted shafts for pistol type handles

The shaft position is rotated 45 degrees.
The catalog numbers are for one piece.

OEZXY91
S07230



Shaft length [mm]		Catalog number	Weight/unit [kg]
-------------------	---	----------------	------------------

Suitable for switches OTDC100...250_, shaft diameter 6 mm

130	109...174	OX P6X130-45	0.04
150	129...194	OX P6X150-45	0.05
210	189...254	OX P6X210-45	0.06
290	269...334	OX P6X290-45	0.08

OTDCB250/6
KE00052



Suitable for switches OT315...400_, shaft diameter 12 mm

250	230...310	OX P12X250-45	0.28
280	260...340	OX P12X280-45	0.3
325	305...385	OX P12X325-45	0.36
395	445...525	OX P12X395-45	0.43
465	439...519	OX P12X465-45	0.51
535	515...595	OX P12X535-45	0.59

Mounting accessories

Short-circuit link

Includes as standard in types OTDC100...200US02.

Switch size [mm]	Catalog number	Weight/unit [kg]
OTDC100..250	OEZXY91	

Phase separators

Grey plastic plate for maintaining 1" clearance between the phases without terminal shrouds. Snap-on mounting. Includes as standard in OTDC100...200U_ types.

Switch size [mm]	Catalog number	Weight/unit [kg]
OTDC100..250	OTDCB250/6	

Terminal lugs

Switch size [mm]	Catalog number	Weight/unit [kg]
OTDC100..200	OZXA-200	

Ordering information

Accessories

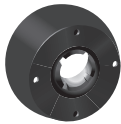
OHZX10
S01432A



Shaft accessories

Color	Catalog number	Weight/unit [kg]
-------	----------------	------------------

OHZX14
S02194A



Shaft alignment ring

Improves the handle operation if a handle and a shaft have been poorly aligned. The type and the ordering numbers are for one piece.

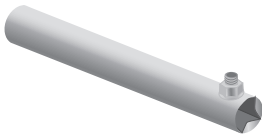
For pistol type handles OH_65...275J6...12

Black	OHZX10	0.23
-------	--------	------

For selector type handles OH_1...3

Black	OHZX11	0.23
-------	--------	------

OXT20X210X
S02211A



Extension ring for pistol type handles OHB_

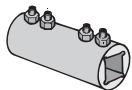
Black	OHZX14	0.06
-------	--------	------

Shaft tube

Supporting 12 mm shafts longer than 280 mm.

	OXT20x210X	1.5
--	------------	-----

OETLZX95, OESAZX167
S00080A

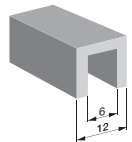


Shaft extension socket

For extending the shaft of combination attachment. The type and the ordering numbers are for one piece.

Shaft diameter [mm]	Catalog number	Weight/type [kg]
6	OESAZX167	0.03
12	OETLZX95	0.04

OETLZK19
S00670C



Adapter for extension socket

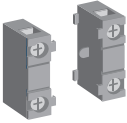
The adapter can be placed inside the extension socket OETLZX95.

6	OETLZK19	0.02
---	----------	------

Ordering information

Accessories

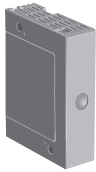
OA1G, OA3G01
S00261A



Auxiliary contact blocks, IP20

Contact numbering according to EN 50013.
The type and the ordering numbers are for one piece.

OEA28
S01641A



Suitable for switches	Function	Catalog number	Weight/unit [kg]
-----------------------	----------	----------------	------------------

Mounting on the left side of the switch or under the mechanism cover

Mounting on the left side of the switch:

Max. 8 auxiliary contact blocks with the OEA28 module.

Mounting under the mechanism cover:

OTDC100...250: Max. 4 test contacts or 2 test contacts + 2 test indication contacts.¹⁾

OT315...630: Max. 4 test contacts + 4 test indication contacts.¹⁾

The test contacts can be used as standard auxiliary contacts as well.

OTDC100...250, OT315...630	1NO	OA1G10	0.03
OTDC100...250, OT315...630	1NC	OA3G01	0.03

Module for auxiliary contacts

Screw mounting to the left side of the switch.

Suitable for switches	Catalog number	Weight/unit [kg]
OTDC100...250, OT315...630	OEA28	0.04

¹⁾ Contact numbering:

(83) (43) (53) 13 21 (61) (31) (71)
(84) (44) (54) 14 22 (62) (32) (72)

²⁾ Auxiliary contacts OA1G_ are available in larger packing as well.

A bulk package includes 50 auxiliary contacts. Type number: add a suffix: /B, e.g. OA1G01/B.

Early break type auxiliary contacts means that in the switches, the NO aux.contacts break before the main contacts open.

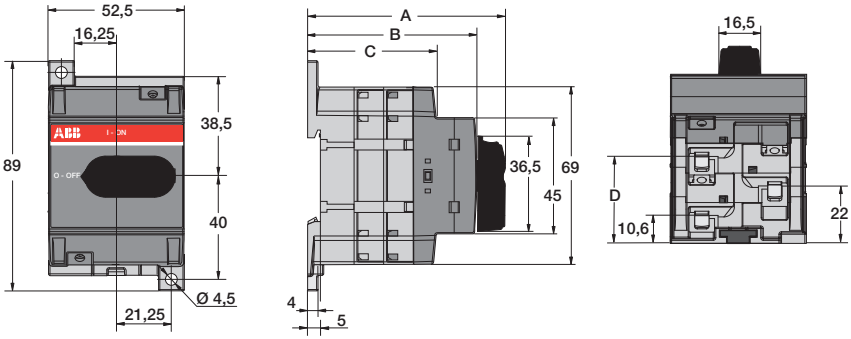
Performance data according to IEC 60947-5-1

For OA1G_, OA3G_

Ue/[V]	AC15 Ie/[A]	Ue/[V]	DC12		DC13	
			Ie/[A]	P/[W]	Ie/[A]	P/[W]
230	6	24	10	240	2	50
400	4	72	4	290	0.8	60
415	4	125	2	250	0.55	70
690	2	250	0.55	140	0.27	70
		440	0.1	44		

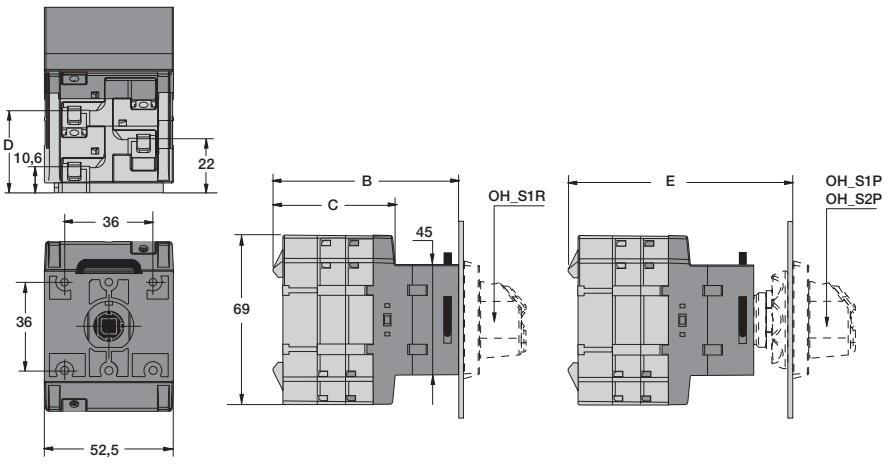
Dimension drawings Disconnect switches

OTDC16...32F_, base or DIN-rail mounting



OTDC16...32F_				
Dimension [mm]				
Number of poles	A	B	C	D
2	66,2	54,1	38,3	22
3	77,6	65,5	49,7	33,4
4	89	76,9	61,1	44,8

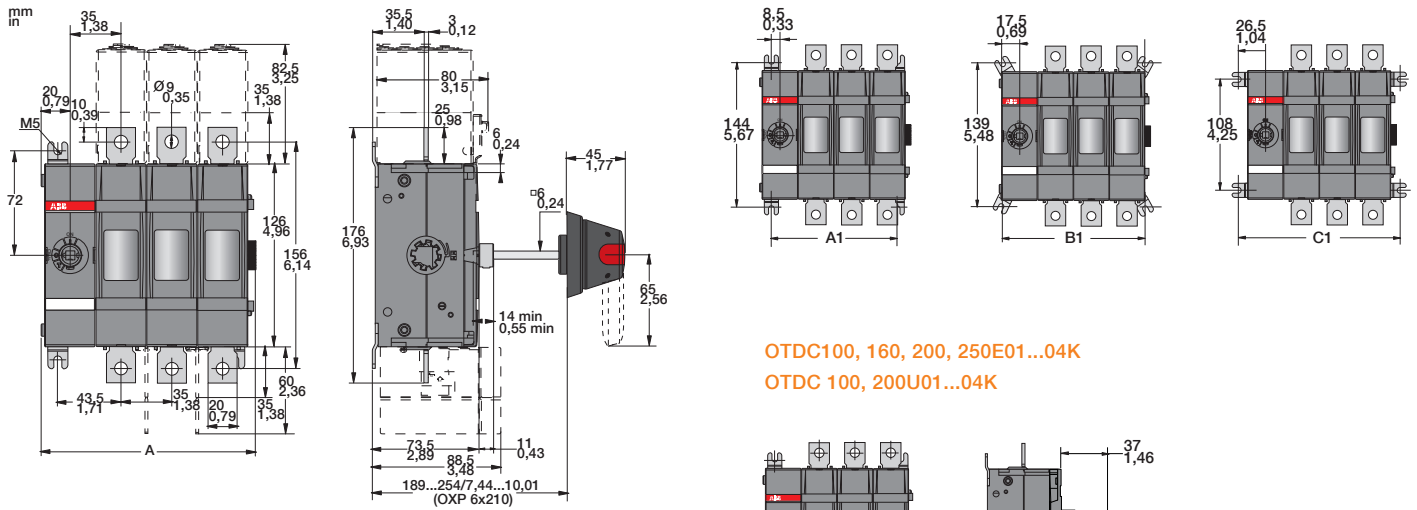
OTDC16...32FT_, door mounting



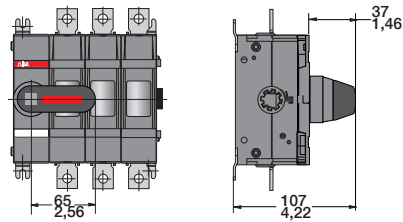
OTDC32FT_				
[mm]	B	C	D	E
FT2	64,1	38,3	22	79,9
FT3	75,5	49,7	33,4	91,3
FT4	86,9	61,1	44,8	102,7

Dimension drawings Disconnect switches

OTDC100...250E02, OTDC100...200U02



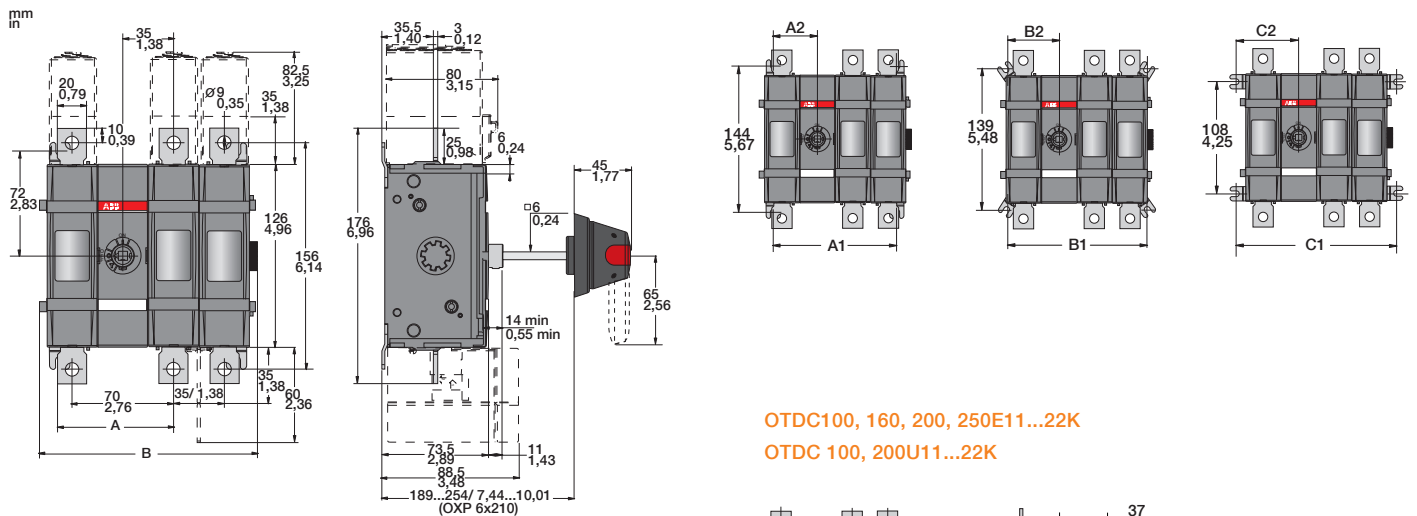
OTDC100, 160, 200, 250E01...04K
OTDC 100, 200U01...04K



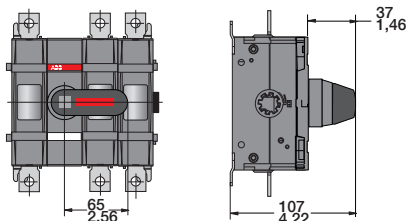
OTDC100, 160, 200, 250E01...04
OTDC 100, 200U01...04

[mm/in]	01	02	03	04
A	78/3,07	113/4,45	148/5,83	183/7,21
A1	52/2,05	67/3,43	122/4,81	157/6,18
B1	70/2,76	105/4,14	140/5,51	175/6,89
C1	88/3,46	123/4,85	158/6,22	193/7,6

OTDC100...250E11, OTDC100...200U11



OTDC100, 160, 200, 250E11...22K
OTDC 100, 200U11...22K

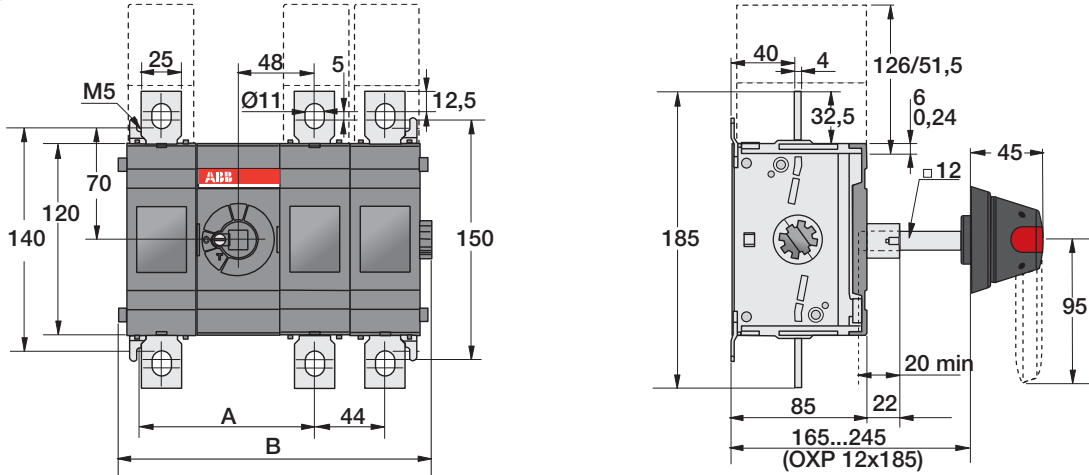


OTDC100, 160, 200, 250E11...22
OTDC100, 200U11...22

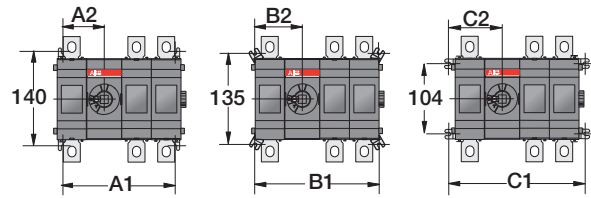
[mm/in]	11	12	13	22
A	80/3,15	80/3,15	80/3,15	115/4,53
B	115,5/4,55	160,5/6,93	185,5/7,31	185,5/7,31
A1	87/3,43	122/4,81	157/6,18	157/6,18
A2	43,5/1,71	43,5/1,71	43,5/1,71	78,5/3,09
B1	105/4,14	140/5,51	175/6,89	175/6,89
B2	52,5/2,07	52,5/2,07	52,5/2,07	87,5/3,44
C1	123/4,85	158/6,22	193/7,6	193/7,6
C2	61,5	61,5	61,5	96,5

Dimension drawings Disconnect switches

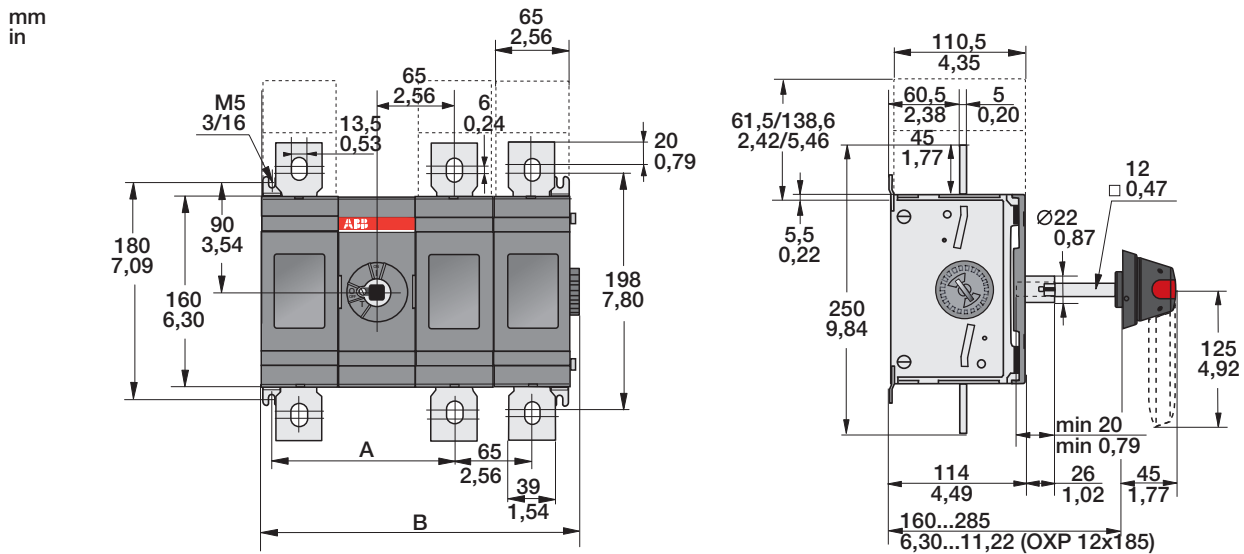
OT315-400E23/33



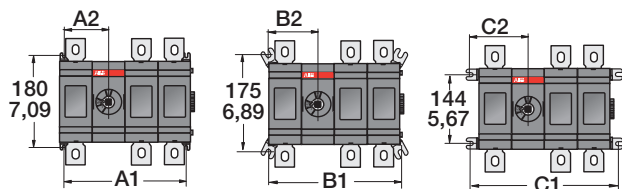
OT315/400/500						
[mm]	E11	E12	E13	E22	E23	E33
A	109	109	109	153	153	197
B	152	196	240	240	284	328
A1	122	166	210	210	254	298
A2	61	61	61	105	105	149
B1	140	184	228	228	272	316
B2	70	70	70	114	114	158
C1	158	202	246	246	290	334
C2	79	79	79	123	123	167



OT630E23/33



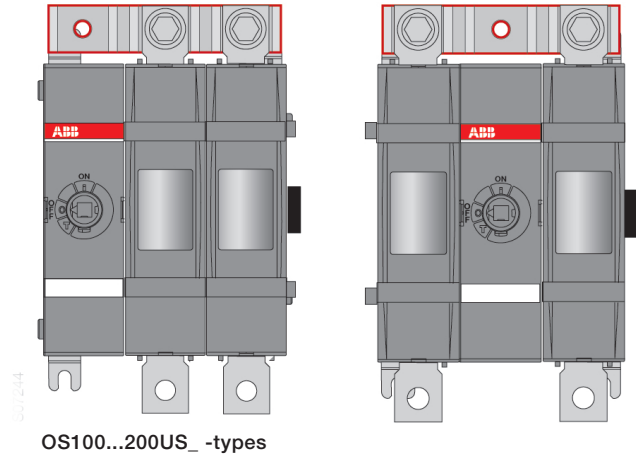
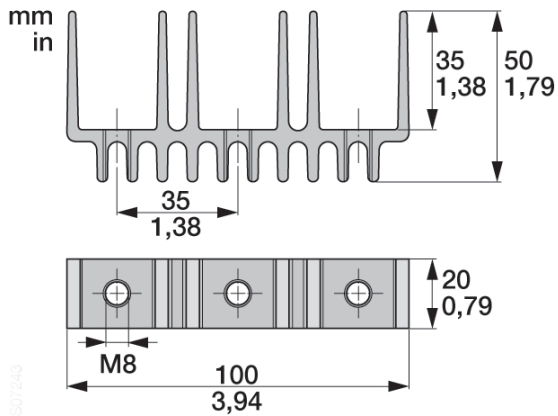
OT600/630/800						
[mm/in]	E11	E12	E13	E22	E23	E33
A	153,5/6,04	153,5/6,04	153,5/6,04	218,5/8,60	218,5/8,60	283,5/11,16
B	201,7/9,1	266/10,47	331/13,03	331/13,03	396/15,59	461/18,15
A1	177/6,97	242/9,53	307/12,09	307/12,09	372/14,65	437/17,20
A2	88,5/3,48	88,5/3,48	88,5/3,48	153,5/6,04	153,5/6,04	218,5/8,60
B1	195/7,68	260/10,24	325/12,80	325/12,80	390/15,35	455/17,91
B2	97,5/3,84	97,5/3,84	97,5/3,84	162,5/6,40	162,5/6,40	227,5/8,96
C1	213/8,39	278/10,94	343/13,50	343/13,50	408/16,06	473/18,62
C2	106,5/4,19	106,5/4,19	106,5/4,19	171,5/6,75	171,5/6,75	236,5/9,31



Dimension drawings

Enclosed disconnect switches, accessories

OEZXY91



Contact us

ABB Inc.

Low Voltage Control Products

16250 W. Glendale Drive

New Berlin, WI 53151

Phone: 888-385-1221

Fax: 800-726-1441

USA Technical Support & Customer Service:

888-385-1221, Option 4

7:30AM to 5:30PM, CST,

Monday - Friday

lvps.support@us.abb.com

Web: www.abb.us/lowvoltage