



PRODIGIO&MILK MY MACHINE

Breville

NESPRESSO®



Job: NES-432001-2004D Prodigio-Milk Breville C

Objekt: pUM

Version: --

Seite: p1

Datum: 15-10-21

Uhrzeit: 12:50:46

von: timea.trojko



Job: NES-432001-2004D Prodigio-Milk Breville C

Objekt: pUM

Version: --

Seite: p2

Datum: 15-10-21

Uhrzeit: 12:50:46

von: timea.trojko

Nespresso Prodigio&Milk

Congratulations on getting *Nespresso Prodigio&Milk*, the first connected coffee machine by *Nespresso*. This machine allows you to brew a perfect coffee time after time while living a unique connected experience with your Smartphone or Tablet. To start your connected journey, you will need to get the *Nespresso App* and pair your Smartphone to your *Nespresso Prodigio&Milk* machine.

To check your device's compatibility, go on www.nespresso.com/Prodigio



Job: NES-432001-2004D Prodigio-Milk Breville C

Objekt: pUM

Version: --

Seite: p3

Datum: 15-10-21

Uhrzeit: 12:50:46

von: timea.trojko

EN Get the App

- 1 **Download** the *Nespresso* App.
If you have it already, please update the App.



- 2 **Launch** the App.

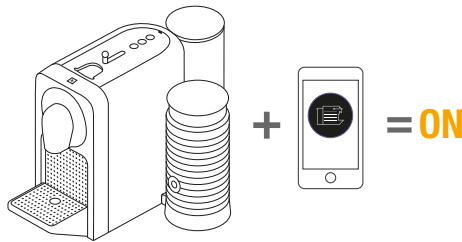


- 3 **Click** on the Machine Icon.



Pairing

- i** **Please remember** that the *Bluetooth®* mode must be activated beforehand on your smartphone or tablet.



When the pairing is complete, the *Nespresso* Light will blink 3 times.

Connectivity Functions

WHAT ARE THEY?

- Capsules stock management
- Schedule a coffee brewing
- Brew Now
- Maintenance notifications
- Descaling alert
- And more to see via the App



Job: NES-432001-2004D Prodigio-Milk Breville C

Objekt: pUM

Version: --

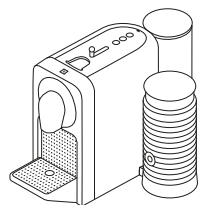
Seite: p4

Datum: 15-10-21

Uhrzeit: 12:50:46

von: timea.trojko

Packaging Content



- ❶ **Prodigio&Milk** Coffee Machine

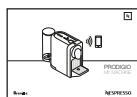


X16

- ❷ **Tasting Box** of *Nespresso*
Grands Crus Capsules



- ❸ **Nespresso** Welcome Brochure



- ❹ **User** Manual



- ❺ **2 x Water Hardness** Test Stick, in the User
Manual and on Quickstart guide

Prodigio&Milk

INSTRUCTION MANUAL

Nespresso is an exclusive system creating the perfect Espresso, time after time. All *Nespresso* machines are equipped with a unique extraction system that guarantees up to 19 bar pressure. Each parameter has been calculated with great precision to ensure that all the aromas from each Grand Cru can be extracted, to give the coffee body and create an exceptionally thick and smooth crema.

⚠ CAUTION: when you see this sign, please refer to the safety precautions to avoid possible harm and damage.

i INFORMATION: when you see this sign, please take note of the advice for the correct and safe usage of your coffee machine.

📱 INFORMATION: when you see this sign, please note that you can also use the App for this function. Consult App for more information.

C75 Specifications

BEC500

~ 220-240 V~, 50-60 Hz, 1700 W

Pmax 19 bar / 1.9 MPa

kg ~ 4 kg / 8 lbs

📄 0.8 L / 27 oz

📏 21.84 cm 25.53 cm 37.4 cm
8.6 in 10.53 in 14.7 in



Job: NES-432001-2004D Prodigio-Milk Breville C
Objekt: pUM
Version: --
Seite: p5

Datum: 15-10-21
Uhrzeit: 12:50:46
von: timea.trojko

Content

<i>Nespresso Prodigio&Milk</i>	3
Get the App	4
Pairing	4
Connectivity Functions	4
Packaging Content	5
Prodigio&Milk	5
Specifications	5
Safety Precautions	7-9
Machine Overview	10
First Use	11-12
Regular Coffee Preparation	13-14
Milk Froth Preparation	15
Energy Saving Concept	16
Programming the Water Volume	16
Reset to Factory Setting	17
Emptying the System	17
Cleaning	18
Descaling	19-21
Troubleshooting	22
Troubleshooting Milk Froth Preparation	23
Contact <i>Nespresso</i> Club	24
<i>The Positive Cup</i> : Our approach to sustainability	24
Disposal and Environmental Protection	25
Limited Guarantee	26



Job: NES-432001-2004D Prodigio-Milk Breville C

Objekt: pUM

Version: --

Seite: p6

Datum: 15-10-21

Uhrzeit: 12:50:46

von: timea.trojko

Safety Precautions



⚠ CAUTION: the safety precautions are part of the appliance. Read them carefully before using your new appliance for the first time. Keep them in a place where you can find and refer to them later on.

⚠ CAUTION: when you see this sign, please refer to the safety precautions to avoid possible harm and damage.

i INFORMATION: when you see this sign, please take note of the advice for the correct and safe usage of your appliance.

- The appliance is intended to prepare beverages according to these instructions.
- Do not use the appliance

for anything other than its intended use.

- This appliance has been designed for indoor and non-extreme temperature conditions use only.
- Protect the appliance from direct sunlight effect, prolonged water splash and humidity.
- This is a household appliance only. It is not intended to be used in: staff kitchen areas in shops, offices and other working environments; farm houses; by clients in hotels, motels and other residential type environments; bed and breakfast type environments.
- This appliance may be used by children of at least 8 years of age, as long as they are supervised and have been given instructions about using the appliance safely and are fully aware of the dangers involved. Cleaning and user maintenance shall not be made by children unless they are older than 8 and they are supervised by an adult.
- Keep the appliance and its cord out of reach of children under 8 years of age.
- This appliance may be used by persons with reduced physical, sensory or mental capabilities, or whose experience or knowledge is not sufficient, provided they are supervised or have received instruction to use the appliance safely and understand the dangers.
- Children shall not use the device as a toy.
- The manufacturer accepts no responsibility and the

warranty will not apply for any commercial use, inappropriate handling or use of the appliance, any damage resulting from use for other purposes, faulty operation, non-professionals repair or failure to comply with the instructions.

Avoid risk of fatal electric shock and fire.

- In case of an emergency: immediately remove the plug from the power socket.
- Only plug the appliance into suitable, easily accessible, earthed mains connections. Make sure that the voltage of the power source is the same as that specified on the rating plate. The use of an incorrect connection voids the warranty.
- Do not put in the dishwasher



EN Safety Precautions

and do not immerse into water for cleaning purposes, do not water the bottom part of the Aeroccino which contains the electrical plug, but clean the interior of the Aeroccino with the detergent and rinse with warm/hot water.

- Dry all Aeroccino with a fresh and clean towel, cloth or paper and reassemble all parts.
- If the bottom part of the Aeroccino is wet, dry it before putting it back in contact with the plug.

The appliance must only be connected after installation.

- Do not pull the cord over sharp edges, clamp it or allow it to hang down.
- Keep the cord away from

heat and damp.

- If the supply cord is damaged, it must be replaced by the manufacturer, its service agent or similarly qualified persons, in order to avoid all risks.
- If the cord is damaged, do not operate the appliance; return the appliance to the *Nespresso* Club or to a *Nespresso* authorised representative.
- If an extension cord is required, use only an earthed cord with a conductor cross-section of at least 1.5 mm² or matching input power.
- To avoid hazardous damage, never place the appliance on or beside hot surfaces such as radiators, stoves, ovens, gas burners, open flame, or similar.
- Always place it on a

horizontal, stable and even surface. The surface must be resistant to heat and fluids, like water, coffee, descaler or similar liquids.

- Disconnect the appliance from the mains when not in use for a long period. Disconnect by pulling out the plug and not by pulling the cord itself or the cord may become damaged.
- Before cleaning and servicing, remove the plug from the mains socket and let the appliance cool down.
- Never touch the cord with wet hands.
- Never immerse the appliance or part of it in water or other liquid.
- Never put the appliance or part of it in a dishwasher.
- Electricity and water together is dangerous and can lead to

fatal electrical shocks.

- Do not open the appliance. Hazardous voltage inside!
- Do not put anything into any openings. Doing so may cause fire or electrical shock!
- Use cold milk for better quality foam.
- Use UHT Milk (or minimum fresh pasteurized).
- Clean after each preparation. Use detergent and rinse with warm/hot water. For Aeroccinos, remove seal from lid and remove whisk.
- Use dishwasher for dishwasher components. If not, use a non-abrasive cloth.

Avoid possible harm when operating the appliance.

- Never leave the appliance unattended during operation.
- Do not use the appliance if it



is damaged or not operating perfectly. Immediately remove the plug from the power socket. Contact the *Nespresso* Club or *Nespresso* authorised representative for examination, repair or adjustment.

- A damaged appliance can cause electrical shocks, burns and fire.
- Always completely close the slider and never open it during operation. Scalding may occur.
- Do not put fingers under coffee outlet, risk of scalding.
- Do not put fingers into capsule compartment or the capsule shaft. Danger of injury!
- Water could flow around a capsule when not perforated by the blades and damage the appliance.
- Never use a damaged or deformed capsule. If a capsule is blocked in the capsule compartment, turn the machine off and unplug it before any operation. Call the *Nespresso* Club or *Nespresso* authorised representative.
- Fill the water tank only with fresh and potable water.
- Empty water tank if the appliance will not be used for an extended time (holidays, etc.).
- Replace water in water tank when the appliance is not operated for a weekend or a similar period of time.
- Do not use the appliance without the drip tray and drip grid to avoid spilling any liquid on surrounding surfaces.
- Do not use any strong cleaning agent or solvent cleaner. Use a damp cloth and mild cleaning agent

to clean the surface of the appliance.

- To clean machine, use only clean cleaning tools.
- When unpacking the machine, remove the plastic film and dispose.
- This appliance is designed for *Nespresso* coffee capsules available exclusively through the *Nespresso* Club or your *Nespresso* authorised representative.
- All *Nespresso* appliances pass stringent controls. Reliability tests under practical conditions are performed randomly on selected units. This can show traces of any previous use.
- *Nespresso* reserves the right to change instructions without prior notice.
- This machine contains magnets.

Descaling

- *Nespresso* descaling agent, when used correctly, helps ensure the proper functioning of your machine over its lifetime and that your coffee experience is as perfect as the first day.
- For coffee and coffee&milk machines, descale according to user manual recommendations or specific alerts.

SAVE THESE INSTRUCTIONS

Pass them on to any subsequent user.

This instruction manual is also available as a PDF at nespresso.com



EN Machine Overview

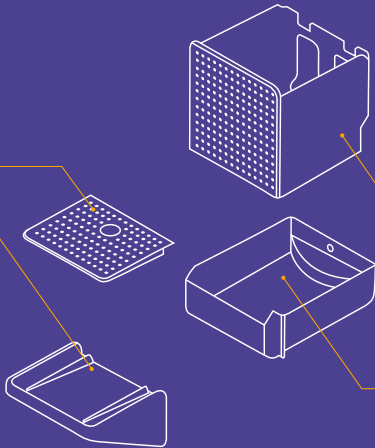
Maintenance Light: water tank empty, capsule container out or full, *descaling needed

Coffee Buttons (Ristretto, Espresso & Lungo)

Slider for Capsule Insertion

*Nespresso Light: capsules stock management

Adjustable Cup Support & Drip Grid



Used Capsule Container & Drip Tray

Coffee Outlet

Water Tank & Lid

Adjustable Water Tank & Milk Frother Arm

Mixer (for hot milk)

Frothing Spring (for Milk Froth)

Lid

Seal

Aeroccino Milk Frother

Start/Stop Button

*Available only with a connected machine



Job: NES-432001-2004D Prodigio-Milk Breville C

Objekt: pUM

Version: --

Seite: p10

Datum: 15-10-21

Uhrzeit: 12:50:46

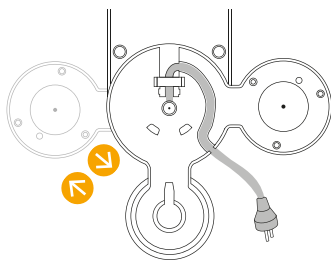
von: timea.trojko

First Use

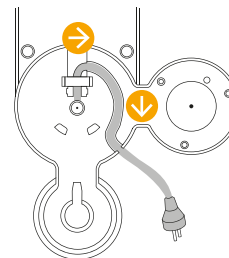


Read the safety precautions first to avoid risks of fatal electrical shock and fire.

- 1 Choose position** for water tank.

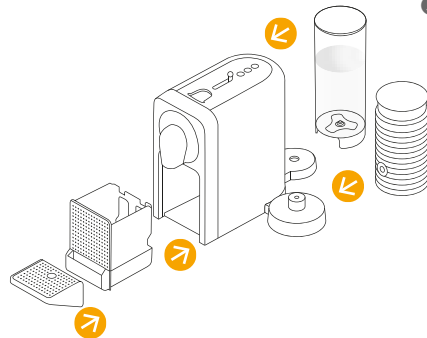


- 2 Remove** the Aeroccino, water tank and capsule container to clean them.



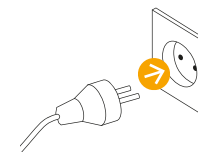
- 3 Insert the remaining cable** in the guide under water tank left or right socket, depending on the position chosen for the water tank. Ensure machine is in the upright position.

- 4 Rinse the water tank** before filling it with potable water.



- 5 Place the water tank,** insert the drip tray, Aeroccino and the capsule container in position. For your safety, operate the machine only with drip tray and capsule container in position.

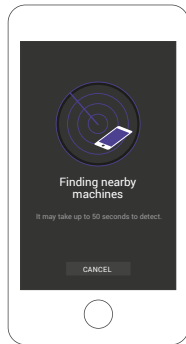
- 6 Plug the machine** into the mains.



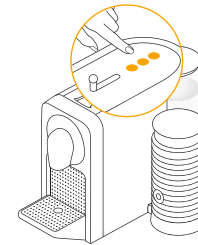
Job: NES-432001-2004D Prodigio-Milk Breville C
Objekt: pUM
Version: --
Seite: p11

Datum: 15-10-21
Uhrzeit: 12:50:46
von: timea.trojko

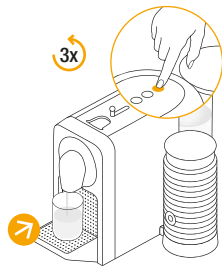
EN First Use



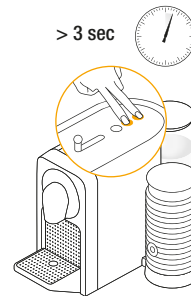
- 7 **To connect your machine**, please follow the instructions in sections «Get the App» and «Pairing» on page 4.
Multiple devices can be connected to your Prodigio&Milk machine only if using a unique club members number. To pair these additional devices, please follow the instructions in sections «Get the App» and «Pairing» on page 4.



- 8 **Turn the machine ON** by pressing any coffee button or by opening the slider. Lights will blink. Heating up takes approximately 25 seconds. Steady lights: machine is ready.



- 9 **Before making any coffee**, make sure to rinse your machine by:
1. Placing a container under coffee outlet.
 2. Closing the slider and pressing the Lungo button to rinse the machine.
 3. Repeat three times.



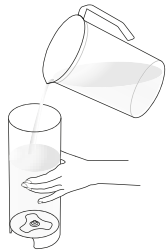
- 10 **To turn OFF your machine**, ensure all the 3 coffee buttons are ON. Press and hold Lungo and Espresso buttons simultaneously for 3 seconds.



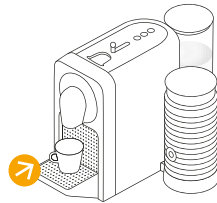


Regular Coffee Preparation

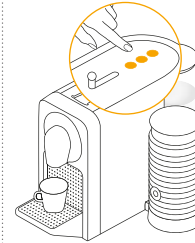
EN



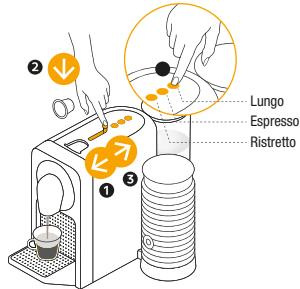
- 1 **Fill the water tank** with potable water.



- 2 **Place a cup** under the coffee outlet.



- 3 **Turn machine ON** by pressing any coffee button or by opening the slider. Lights will blink. Heating up approximately takes 25 seconds. Steady lights: ready.



- 4 **Open the slider**, insert a capsule and close the slider. Select your coffee size based on the chosen Grand Cru:

	Ristretto (25 ml / 0.84 oz)
	Espresso (40 ml / 1.35 oz)
	Lungo (110 ml / 3.7 oz)

You can select the desired coffee button, by pressing it, even while the machine is still heating up.
The selected coffee button will blink and becomes steady on when machine is ready to brew. The coffee will then flow.

To ensure hygienic conditions, it is highly recommended to not reuse a used capsule.



EN



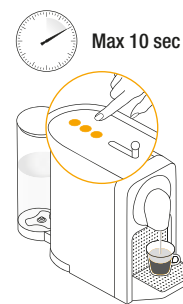
Regular Coffee Preparation



- 5 **Preparation** will stop automatically. The capsule will eject automatically.



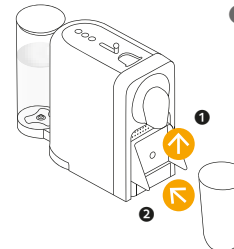
- 6 **To stop the coffee flow**, press the selected coffee button or slightly move the slider towards the back of the machine until the coffee flow stops. Please note, a manual top-up is not possible in this case.



- 7 **To manually top up** your coffee, touch any of the coffee buttons within 10 seconds from the end of preparation.



- 8 **To change the selected cup size** during brewing select the new desired coffee button. The machine will immediately stop if the coffee volume extracted is larger than new desired coffee size.



- 9 **To accommodate** a milk recipe glass, lift the cup support.

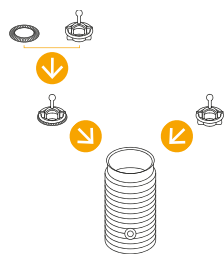


Milk Froth Preparation

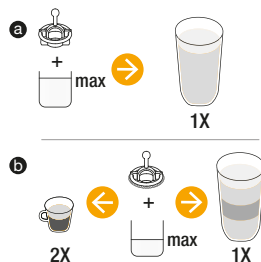
i Only use the Aeroccino with the base provided.

i **TIP:** For optimal milk froth, use whole or semi skimmed milk at refrigerated temperature (about 4-6 °C).

⚠ WARNING: Do not put the Aeroccino in the dishwasher. Risk of electrical shock and fire! Make sure the under side of the milk frother is dry.

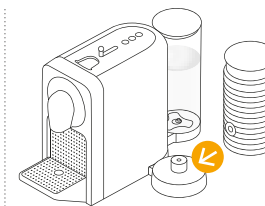


1 Attach the relevant whisk.

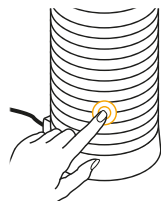


2 Fill milk frother up to one of the two «max» level indicators:

- Highest «max milk» level indicator (230 ml/ 7.78 oz) is for hot milk preparations.
- Lowest «max foam» level indicator (110 ml/ 3.72 oz) is for milk froth preparations.

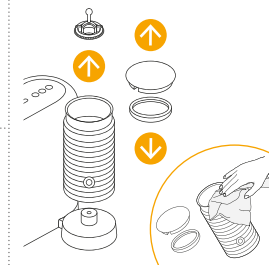


3 Close the Aeroccino with its lid and place it on the base.



4 For a hot preparation, briefly press button to start.
- Button lights up red.
Takes approx. 70-80 sec.

For cold milk froth, keep button pressed for approx. 2 seconds.
- Button lights up blue.
Takes approx. 60 sec.



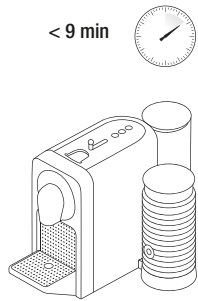
5 Clean after each preparation.
Only use non abrasive cloth, never use a brush.
Jug is waterproof.
Do not put in dishwasher.



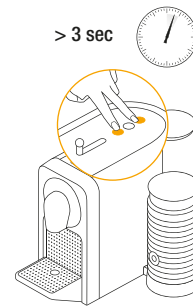
Job: NES-432001-2004D Prodigio-Milk Breville C
Objekt: pUM
Version: --
Seite: p15

Datum: 15-10-21
Uhrzeit: 12:50:46
von: timea.trojko

EN Energy Saving Concept



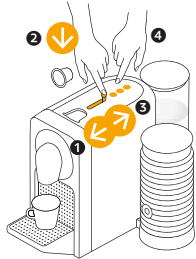
- 1 Automatic OFF mode:** the machine will turn into OFF mode automatically after 9 minutes of non-use.



- 2 To change automatic OFF mode from 9 to 30 minutes:**
- Ensure the machine is turned OFF
 - Press and hold both the Lungo and Ristretto buttons for more than 3 sec.
 - Espresso button flashes 3 times for confirmation.

To revert back to 9 minutes, repeat the same procedure. Espresso button flashes once for confirmation.

Programming the Water Volume



- 1 Any coffee button can be programmed.**
1. Ristretto button: from 15 to 30 ml / 0.5-1 oz.
 2. Espresso button: from 30 to 70 ml / 1 to 2.33 oz.
 3. Lungo button: from 70 to 130 ml / 2.33 to 3 oz.

- - Ensure the machine is ON
- Open the slider and insert the capsule.
 - Close the slider.
 - Press and hold the selected coffee button.
 - Release the button when desired volume is reached.
 - The 3 coffee buttons flash for confirmation.
 - Water volume is now stored for the button used during programming.



Job: NES-432001-2004D Prodigio-Milk Breville C

Objekt: pUM

Version: --

Seite: p16

Datum: 15-10-21

Uhrzeit: 12:50:46

von: timea.trojko



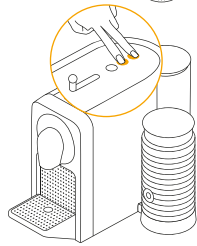
Reset to Factory Settings

EN

Min 5 sec



If you reset to factory settings, this will cancel the pairing, reset the capsules stock management and the descaling alert.



1 Factory settings are:

- Lungo, Espresso, Ristretto coffee buttons 110ml / 3.7oz, 40ml / 1.35 oz., 25ml / 0.84 oz.
- Automatic OFF mode after 9 minutes.
- The water hardness set by default is hard, which corresponds to around 1000 Espresso cups.

To do it via your machine:

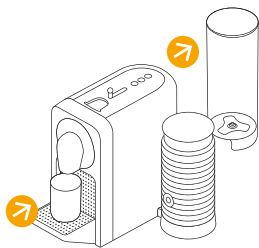
1. Ensure the machine is turned OFF.
2. Press and hold Espresso & Lungo buttons for at least 5 seconds.

All the coffee buttons and LEDs will blink once as confirmation. To unpair your machine, please refer to the «Troubleshooting section».

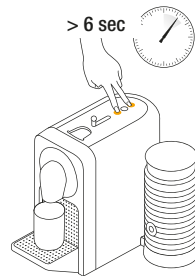
Emptying the System before a period of non-use or for frost protection



To note, the machine remains blocked for 10 minutes after emptying!



- 1 Remove the water tank. Place a container under the coffee outlet.



- 2 Ensure the machine is ON, press and hold the Ristretto & Lungo buttons together for at least 6 seconds.



- 3 The Ristretto and Lungo coffee buttons will flash for confirmation. Then close the slider to start procedure. If the slider was already closed, the emptying process starts automatically. When the procedure is finished, clean the drip tray and the cup support. Machine turns to OFF mode automatically when empty.



Job: NES-432001-2004D Prodigio-Milk Breville C

Objekt: pUM

Version: --

Seite: p17

Datum: 15-10-21

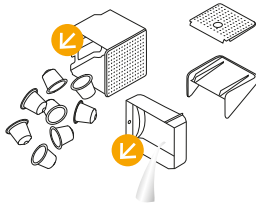
Uhrzeit: 12:50:47

von: timea.trojko

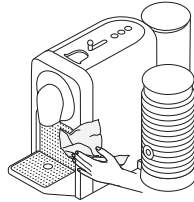
EN Cleaning



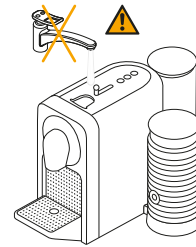
To ensure hygienic conditions, it is highly recommended to empty and clean the used capsule container every day.



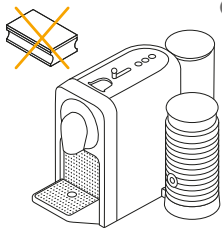
- 1 **Empty the drip tray** and the capsule container every day. Also remove lid and water tank and clean them all with odorless detergent and rinse with warm / hot water.



- 2 **Dry all water tank** container parts with a fresh and clean towel, cloth or paper and reassemble all parts. Clean the coffee outlet and inside the machine regularly with a damp cloth.



- 3 **Never immerse** the appliance or part of it in water or any other liquid.



- 4 **Do not use** any strong or abrasive solvent, sponge or cream cleaner. Do not put in the dishwasher.



Job: NES-432001-2004D Prodigio-Milk Breville C

Objekt: pUM

Version: --

Seite: p18

Datum: 15-10-21

Uhrzeit: 12:50:47

von: timea.trojko



Descaling

EN



Duration approximately 15 minutes.



Read the safety precautions on the descaling package and refer to the table for the frequency of use. The descaling solution can be harmful. Avoid contact with eyes, skin and surfaces. Never use any product other than the *Nespresso* descaling kit available at the *Nespresso* Club to avoid damage to your machine. The following table will indicate the descaling frequency required for the optimum performance of your machine, based on water hardness. For any additional questions you may have regarding descaling, please contact the *Nespresso* Club.



Job: NES-432001-2004D Prodigio-Milk Breville C

Objekt: pUM

Version: --

Seite: p19

Datum: 15-10-21

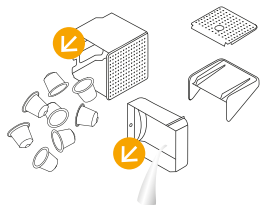
Uhrzeit: 12:50:47

von: timea.trojko

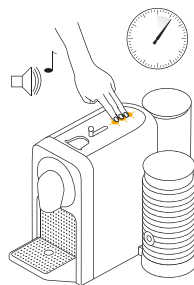
EN



Descaling



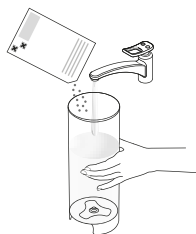
- 1 **Empty the drip tray** and the used capsule container.



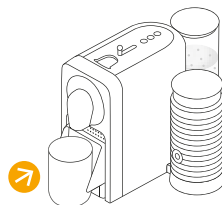
- 2 **To enter the descaling mode**, ensure the machine is ON, press and hold the 3 coffee buttons for 6 seconds until the confirmation with a beep. The 3 buttons will start blinking (buttons will flash until the exit of this mode).



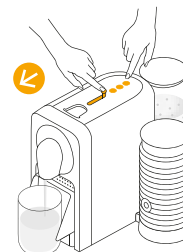
Info: maintenance light is ON during the descaling process.



- 3 **Fill the water tank** with 1 unit of *Nespresso* descaling liquid and add 0.5 L / 17 oz of water.



- 4 **Place a container** (minimum volume: 0.8 L / 27 oz) under the coffee outlet.



- 5 **Ensure the slider is closed** and press any coffee button to start the descaling cycle, pump will run. Machine will stop automatically when water tank is empty.



Job: NES-432001-2004D Prodigio-Milk Breville C

Objekt: pUM

Version: --

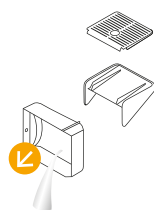
Seite: p20

Datum: 15-10-21

Uhrzeit: 12:50:47

von: timea.trojko

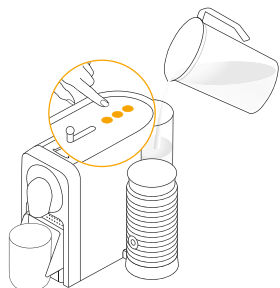
- 6 **Refill the water tank** with the used descaling agent (already passed in the machine) collected into the container.



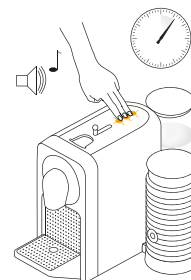
- 7 **Empty** the drip tray.



- 8 **Press any button to start** descaling a second time. Machine will stop automatically when the water tank is empty. Empty and rinse the water tank, drip tray and cup support thoroughly to avoid any residue.





- 9 **Refill the water tank** with fresh potable water. Press any button to start rinsing the machine, pump will run. Machine will stop automatically when the water tank is empty. Repeat this twice.



- 10 **To exit the descaling mode**, press and hold the 3 buttons for 6 seconds until the confirmation with a beep. The machine is now ready for use.

Water hardness:*

	App.	fH	dH	CaCO ₃	 (40 ml)
	Level / Niveau 0	< 5	< 3	< 50 mg/l	4000
	Level / Niveau 1	> 7	> 4	> 70 mg/l	3000
	Level / Niveau 2	> 13	> 7	> 130 mg/l	2000
	Level / Niveau 3	> 25	> 14	> 250 mg/l	1500
	Level / Niveau 4	> 38	> 21	> 380 mg/l	1000

fH French degree
dH German Grade
CaCO₃ Calcium Carbonate

*On the App, the water hardness can be adjusted any time under "Water status".



Job: NES-432001-2004D Prodigio-Milk Breville C
Objekt: pUM
Version: --
Seite: p21

Datum: 15-10-21
Uhrzeit: 12:50:47
von: timea.trojko

EN Troubleshooting

 **Videos are available** on the App and on www.nespresso.com - Go to section «services».

Pairing has not been successful.	<ul style="list-style-type: none"> - Check that the <i>Bluetooth®</i> on the smartphone or tablet is activated. - Check the compatibility of your smartphone or tablet with the machine (see page 3). 	<ul style="list-style-type: none"> - Ensure the smartphone or tablet is placed next to the machine during the pairing - Make sure to not turn ON any microwave close to the machine during pairing.
If you want to unpair your machine, via the app:	<ul style="list-style-type: none"> - Go on the App «Name», click on «Machine status», then click on «Unpair this machine». - Click on «unpair this device» to confirm the unpairing. 	<ul style="list-style-type: none"> - Note: In case of a unpairing, all the setups and specifications will be lost and the machine will be reset to factory settings.
If you want to unpair your machine, via the machine:	<ul style="list-style-type: none"> - Press simultaneously Ristretto and Espresso buttons and remove the plug from the mains. 	<ul style="list-style-type: none"> - Note: this action will deactivate the <i>Bluetooth®</i> function from the machine.
If you want to reactivate the <i>Bluetooth®</i> on your machine, via the machine:	<ul style="list-style-type: none"> - Please reset to factory settings. See paragraph on «Reset to Factory Settings». 	
No light on the coffee buttons.	<ul style="list-style-type: none"> - Machine turns OFF automatically. See paragraph on «Energy Saving Concept». 	<ul style="list-style-type: none"> - Check the mains: plug, voltage, fuse.
No coffee, no water, unusual coffee flow.	<ul style="list-style-type: none"> - Check if the water tank is correctly positioned, if empty, fill with potable water. - Descale it if necessary. 	
Coffee is not hot enough.	<ul style="list-style-type: none"> - Preheat cup. 	<ul style="list-style-type: none"> - Descale the machine if necessary.
The slider does not close completely or the machine doesn't start brewing.	<ul style="list-style-type: none"> - Empty the capsule container. 	<ul style="list-style-type: none"> - Check that no capsule is blocked inside the machine. (Note: do not put the finger inside the machine)
Leakage (water under the machine). Maintenance light is ON.	<ul style="list-style-type: none"> - Empty drip tray if full. - Empty the used capsule container and check no capsules are blocked. - Check the water tank. If empty, fill with potable water and brew a coffee. 	<ul style="list-style-type: none"> - If problem persists, call the <i>Nespresso</i> Club. - If problem persists, call the <i>Nespresso</i> Club.
Nespresso light is ON.	<ul style="list-style-type: none"> - It means your capsules stock is empty. You can order capsules via the App or <i>Nespresso</i> website. 	
3 coffee buttons flash quickly.	<ul style="list-style-type: none"> - To exit the descaling mode, press and hold the 3 buttons for 6 seconds until the confirmation with a beep. 	<ul style="list-style-type: none"> - If problem persists, call the <i>Nespresso</i> Club, or check the App for more information.
Water or coffee flow does not stop even when pushing a coffee button.	<ul style="list-style-type: none"> - Gently move the slider towards the back of the machine to stop the flow. 	
No coffee flow, water goes directly into the drip tray (despite inserted capsule).	<ul style="list-style-type: none"> - Pull the slider to ensure it is closed. 	<ul style="list-style-type: none"> - If problem persists, call the <i>Nespresso</i> Club.
Machine turns to OFF mode.	<ul style="list-style-type: none"> - To save energy the machine will turn to OFF mode after 9 minutes of non-use. - See paragraph on «Energy Saving Concept». 	<ul style="list-style-type: none"> - Press one of the coffee buttons to turn to "ON-mode" or open the slider.



Job: NES-432001-2004D Prodigio-Milk Breville C

Objekt: pUM

Version: --

Seite: p22

Datum: 15-10-21

Uhrzeit: 12:50:47

von: timea.trojko

Troubleshooting Milk Froth Preparation

Aeroccino does not start.

- Be sure to position the jug correctly on a clean base. Be sure to attach the whisk to the jug correctly.

Quality of milk froth not up to standard.

- Be sure to use whole or semi-skimmed milk at refrigerated temperature (about 4-6 °C). For a best result, the milk must be newly opened.

- Be sure to use the appropriate whisk and the jug is clean.

Red Button blinking.

a) The appliance is too hot.
Rinse it under cool water.

b) Whisk is missing.

c) Not enough milk. Fill milk frother up to one of the two «max» level.

Milk Overflows.

- Be sure to use the appropriate whisk.
- Check the corresponding indicator level.



Job: NES-432001-2004D Prodigio-Milk Breville C

Objekt: pUM

Version: --

Seite: p23

Datum: 15-10-21

Uhrzeit: 12:50:47

von: timea.trojko

EN Contact the *Nespresso* Club

As we may not have foreseen all uses of your appliance, should you need any additional information, in case of problems or simply to seek advice, call the *Nespresso* Club or your *Nespresso* authorised representative. Contact details for your *Nespresso* Club or your *Nespresso* authorised representative can be found in the «Welcome to *Nespresso*» folder in your machine box or at nespresso.com

The Positive Cup: our approach to sustainability

At Nespresso, we believe that each cup of coffee can not only deliver a moment of pleasure, but also restore, replenish and revive environmental resources and communities. As a company, sustainability is our way of doing business and is at the heart of everything we do.

Through our sustainability strategy *The Positive Cup*, we are aiming to reach our 2020 goal of making every cup of *Nespresso* a positive cup. To realise this vision, *Nespresso* has set itself ambitious commitments:

Coffee: 100% sustainably sourced coffee
Capsules: 100% sustainably managed aluminum
Climate: 100% carbon insetting

For more information, go to www.nespresso.com/positive



Job: NES-432001-2004D Prodigio-Milk Breville C

Objekt: pUM

Version: --

Seite: p24

Datum: 15-10-21

Uhrzeit: 12:50:47

von: timea.trojko

Disposal and environmental protection

This appliance complies with the EU Directive 2012/19/EC. Packaging materials and appliance contain recyclable materials. Your appliance contains valuable materials that can be recovered or can be recycled. Separation of the remaining waste materials into different types facilitates the recycling of valuable raw materials. Leave the appliance at a collection point. You can obtain information on disposal from your local authorities.



Job: NES-432001-2004D Prodigio-Milk Breville C

Objekt: pUM

Version: --

Seite: p25

Datum: 15-10-21

Uhrzeit: 12:50:47

von: timea.trojko

EN Limited Guarantee

Breville guarantees this product against defects in materials and workmanship for two years domestic use (or 3 months commercial use) from the date of purchase. During this period, Breville will either repair or replace, at its discretion, any defective product at no charge to the consumer. In the event of a product or accessory being repaired or replaced during the guarantee period, the guarantee on the repaired product will expire two years from the purchase date of the original product, not two years from the date of repair. This guarantee excludes liability for consequential loss or any other loss or damage caused to property or person arising from any cause whatsoever. It also excludes defects caused by the product not being used in accordance with instructions, accidental damage, misuse, being tampered with by unauthorised persons, improper maintenance, consumable items or normal wear and tear and does not cover the cost of claiming under the warranty. Except to the extent applicable by law, the terms of this warranty do not exclude, restrict or modify, and are in addition to, the mandatory statutory rights applicable to the sale of the product to you. Only the use of *Nespresso* capsules will guarantee the proper functioning and lifetime of your *Nespresso* machine. Any defect resulting from the usage of non-genuine *Nespresso* capsules will not be covered by this warranty.

How to Claim Under the Breville Warranty

Nespresso is handling product enquiries and product servicing on Breville's behalf. If you believe your product is defective, contact the *Nespresso* customer service team directly for instructions on where to send or bring it for repair by a Breville authorised service agent. Contact *Nespresso* **Australia:** 1800 623 033 or **New Zealand:** 0800 234 579 auclub@nespresso.com.

This product is imported and distributed by Breville and this warranty is provided by Breville. To the extent permitted by law, *Nespresso* has no liability for the product and all guarantees, warranties and conditions by *Nespresso* are excluded.

Breville



Job: NES-432001-2004D Prodigio-Milk Breville C

Objekt: pUM

Version: --

Seite: p26

Datum: 15-10-21

Uhrzeit: 12:50:47

von: timea.trojko

Blank lined area for notes or drawing.



Breville

PRODIGIO&MILK
by Nespresso



Job: NES-432001-2004D Prodigio-Milk Breville C

Objekt: pUM

Version: --

Seite: p28

Datum: 15-10-21

Uhrzeit: 12:50:47

von: timea.trojko