

Innovations in Practice and Policy to End Infant  
Mortality Disparities Conference  
May 21, 2009

Brick by Brick  
Building an MCH Life Course Organization  
to Improve Women's Health Across the Lifespan

Tamara Wrenn, MA, CCE, CIMT  
Consultant, Practice Matters , a subsidiary of  
Northern Manhattan Perinatal Partnership, Inc

# Objectives

- I. Define a Maternal Child Health Life Course Organization (MCHLCO)
- II. Demonstrate a step-by-step organizational approach to moving the Life Course Framework from theory to practice for interconceptional care
- III. Summarize the benefits and impact of NMPP as a MCHLCO

# *Our Why!*



The Northern Manhattan Perinatal Partnership, Inc. (NMPP) is a not-for-profit organization comprised of a network of public and private agencies, community residents, health organizations and local businesses. NMPP provides crucial services to women and children in Central, West and East Harlem and Washington Heights.

# Mission Statement

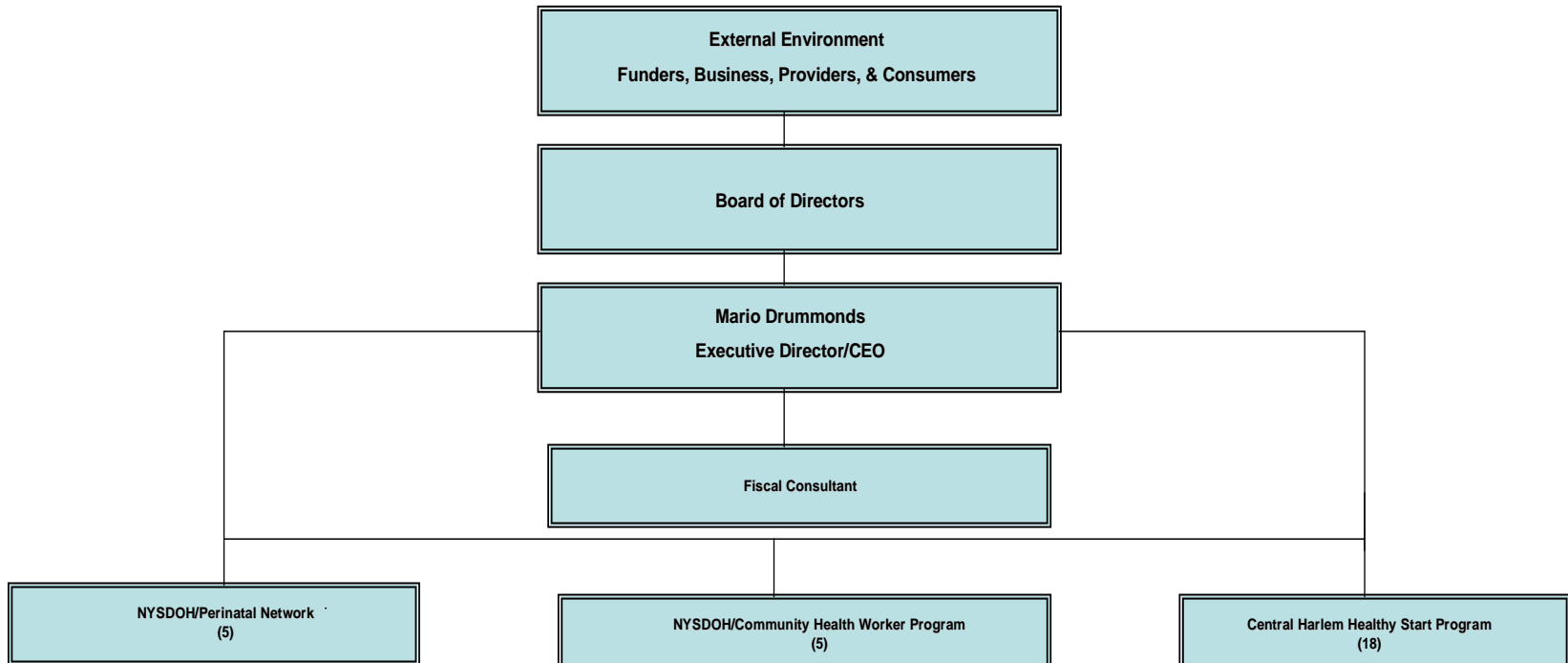
NMPP's mission is to save babies and help women take charge of their reproductive, social and economic lives. We achieve this mission by offering a number of programs that help reduce the infant mortality rate and increase the self-sufficiency of poor and working class women throughout the above communities.

# NMPP 1995

**NORTHERN MANHATTAN PERINATAL PARTNERSHIP, INC.**

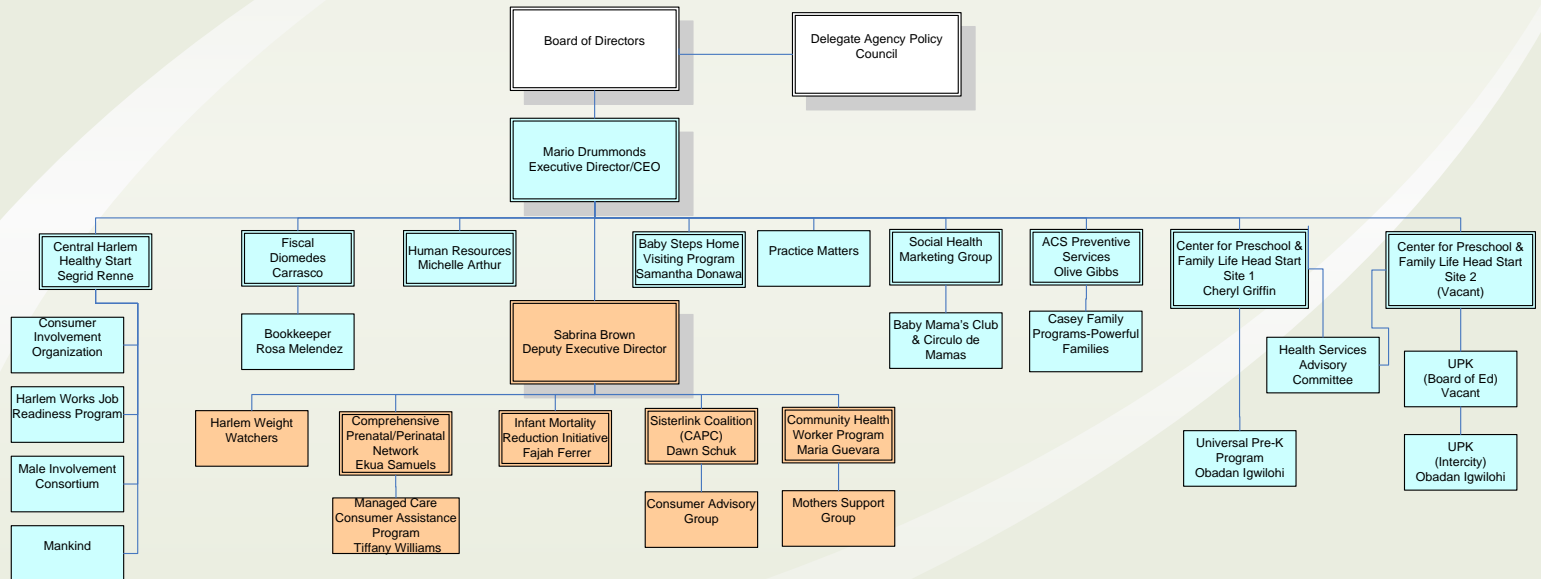
**MANAGERIAL/PROGRAM CHART for 1995**

**SUSTAINABILITY as ORGANIZATIONAL STRATEGIC INTENT**

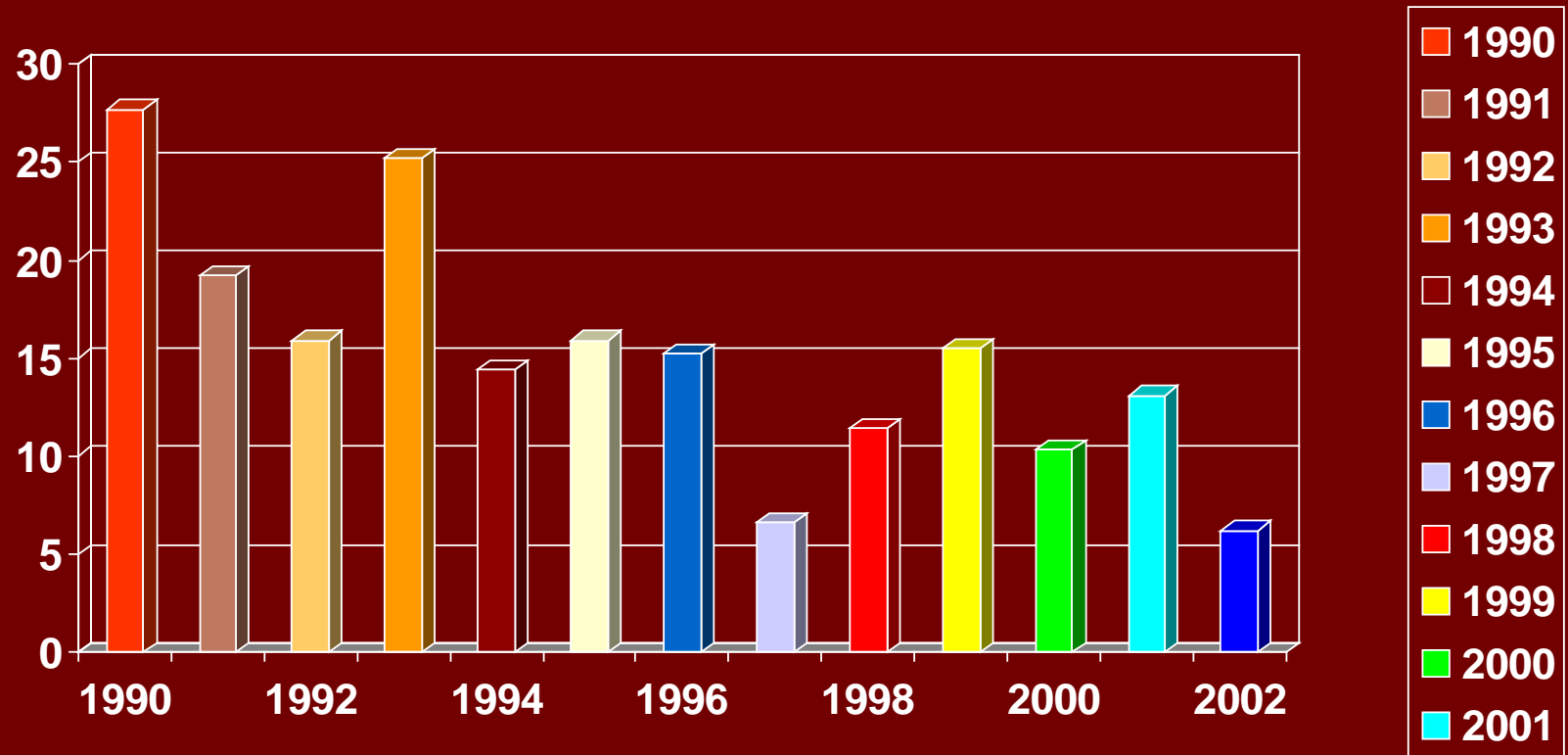


# NMPP 2009

Northern Manhattan Perinatal Partnership – Organizational Chart



# Central Harlem Infant Mortality Rate





# Infant Deaths and Infant Mortality Rate by Health Center District of Residence

New York City, 2001-2007

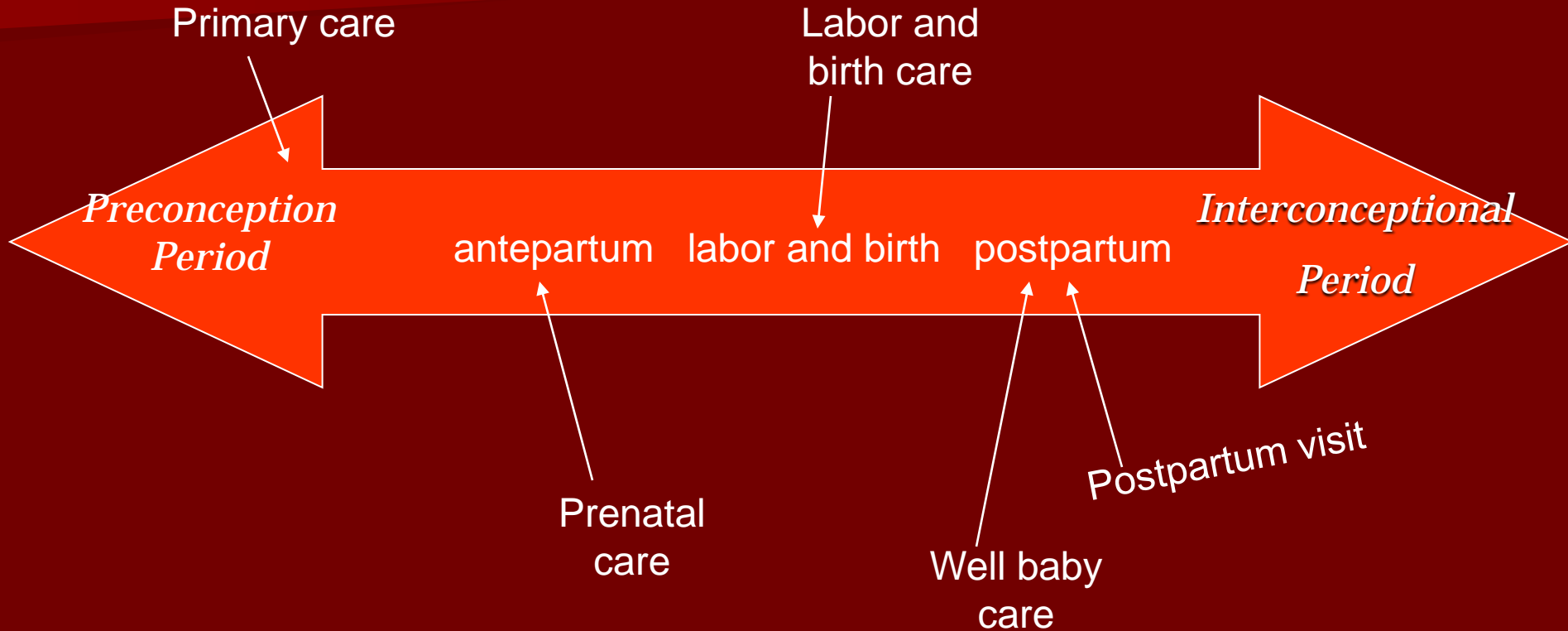
<b>Health Center District</b>	<b>2001 IMR</b>	<b>2002 IMR</b>	<b>2003 IMR</b>	<b>2004 IMR</b>	<b>2005 IMR</b>	<b>2006 IMR</b>	<b>2007 IMR</b>
<b>New York City</b>	<b>6.1</b>	<b>6.0</b>	<b>6.5</b>	<b>6.1</b>	<b>6.0</b>	<b>5.9</b>	<b>5.4</b>
<b>Central Harlem</b>	<b>13.1</b>	<b>6.2</b>	<b>7.3</b>	<b>5.1</b>	<b>7.4</b>	<b>11.0</b>	<b>8.0</b>
<b>East Harlem</b>	<b>7.8</b>	<b>8.3</b>	<b>5.0</b>	<b>5.5</b>	<b>3.6</b>	<b>5.0</b>	<b>8.4</b>
<b>Washington Heights</b>	<b>5.5</b>	<b>4.2</b>	<b>7.3</b>	<b>5.9</b>	<b>4.5</b>	<b>3.8</b>	<b>2.8</b>

*September 13, 2006*

*Bureau of Vital Statistics*

*New York City Department of Health and Mental Hygiene*

# Traditional Perinatal Care Continuum



# Lifespan Approach



Birth Early childhood Pre-teen Teen Young adult Women 35> Seniors

# Definition

**A MCH Life Course Organization** is an entity (local/state) that develops the capacity over time to deliver integrated, continuous and comprehensive health and social services and support to women and their family members from the womb to the tomb.

# Upstream Levels of Impact

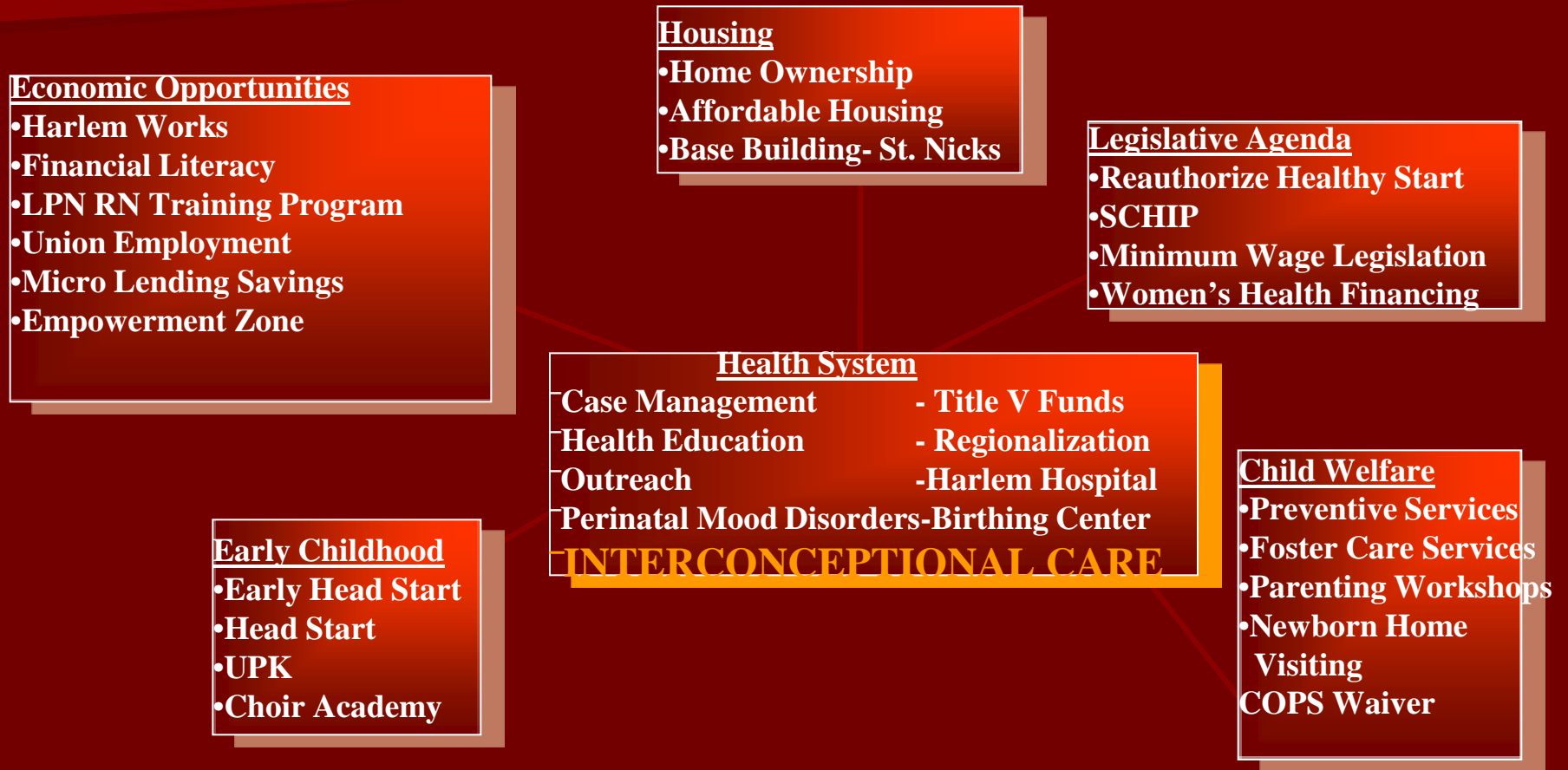
- Individual level
  - Monitor stress level
  - Periodontal checkup
  - Screen for diet and nutrition needs
- Group & Interpersonal level
  - Baby Mama's Group
  - Sister Chat
  - Collard Greens for the Ghetto Soul Cultural Work
- Organizational level
  - Citywide Coalition to End Infant Mortality
- Community Environment level
  - Anti-Stigma Campaign/Harlem Strategic Action Committee
  - Weight Watchers
- Society/Public Policy level
  - City Council Funding

# Benefits of Building a MCHLCO

- Reduces fragmented health care system
- Increases continuity of care
- Cost Efficient
- Increases organizational efficiency
- Increases funding opportunities
- Increases sustainability
- Impacts health needs of women & their families from the womb to the tomb

# Spectrum of Work for MCH Life Course Organization

## Building Public Health Social Movement



# Crossing the Bridge into Interconceptional Care





# Goals of Interconceptional Care

- The reduction of low birth weight & infant mortality
- To increase women's access to healthcare
- The reduction of disparities in mother & infant health outcomes

# Input

- Interconceptional Care Case Management
- Clients/Consumers
- Strength based framework
- Money
- Sacrifice
- Time & Patience

# Key Concepts

- Organizations begin by developing a Life Course position and framework for conceptualizing the theory
- Action steps are taken from the top down to internalize this position as part of the organizational culture
- Interconceptional care becomes the driving force for strategic programming and funding
- Organizations develop an interconceptional care protocol for working with women

# Activities

- Staff – training
  - Interconceptional Care Case Management: coordination of comprehensive quality services
  - Leadership
- Clients - training
  - Reproductive life planning
  - Leadership
  - SMART goal setting
- Outreach – upstream approach
- Core Contents of Case Management – every woman
  - Risk assessment
  - Health promotion
  - Clinical interventions
  - Psychosocial interventions
  - Socioeconomic interventions

\*\*Enhanced contents utilized for high risk women

# Key Concepts

- Intake, screening and assessment of clients is key
- Staff training must be specific to developing the staff's capacity to transition to an interconceptual care model
- Leadership capacity is built which enables programmatic experimentation
- Clients assume their rightful position as the authority in their lives, relegating staff to facilitator on their journey to change

# Client short-term outcomes

- Identification of baselines for physical and mental health, and wellness issues
- Engagement of fathers, male partners and spouses
- Circle of support
- Referrals to services based on intake, screening and assessment

# Key Concepts

- Short term outcomes will include the baseline data collected from the client's risk assessments
- Male involvement will be a cornerstone of interconceptional care
- Intergenerational involvement will be a cornerstone of interconceptional care

# Client long-term outcomes

- Birth spacing
- Grassroots legislative involvement and advocacy
- Improved interpersonal relationships
- Improved self-efficacy
- Ongoing support network
- Increased economic and educational opportunities
- Planned pregnancies
- Sustained healthcare
- Life Course Ambassador



# Key Concepts

- Outcomes related to the clients current health status and future pregnancies are included

# Measure of Success



The successful transition from theory to practice of an MCH Life Course Organization is measured by its upstream impact.

# NMPP MCHLCO

## Areas of Upstream Impact in Central & East Harlem

- Chronic disease management – diabetes/asthma
- Overweight & obesity
- Perinatal mood disorders
- Fatherhood
- Headstart & Pre-K
- Nutrition & Fitness
- HIV/AIDS
- Gynecological & reproductive health care
- Infant mortality reduction & advocacy work
- Poverty reduction activities
- Workforce empowerment
- Health policy & financing

# Where does Memphis Go from Here?



1. Assess your organizations existing capacity
2. Build internal capacity
3. Develop a strategic interconceptional care approach
4. Build collaborations to create an integrated system of care

# Contact

Tamara Wrenn, MA, CCE, CIMT

Practice Matters

c/o Northern Manhattan Perinatal

Partnership, Inc.

127 West 127<sup>th</sup> Street

Suite 305

New York, NY 10027

917-945-0765

[Tamara.Wrenn@justuswomen.org](mailto:Tamara.Wrenn@justuswomen.org)

