

BRIDGESTONE

*Stay on the
right track*



RUBBER TRACKS
For Track Loaders

A WORLD LEADER IN THE TIRE AND RUBBER INDUSTRY

Bridgestone Corporation is a world leading tire and rubber company, with 98 manufacturing plants and sales networks in 150 countries.

The company is renowned for its R & D and design capability, exemplified by the success of Bridgestone's racing tires. This expertise extends to a wide range of products, including automotive parts, industrial rubber products... and Rubber Tracks.

BRIDGESTONE, RUBBER TRACK EXPERT

It was Bridgestone engineers who pioneered the Rubber Track for track loaders in the 1990's. Many construction machinery manufacturers all over the world have adopted our Rubber Tracks for track loaders. Bridgestone has the largest market share in the world for Rubber Tracks.

By drawing on the group's extensive R&D, design and testing resources—and combining this with our vast experience of tracked vehicles, Bridgestone Rubber Tracks for track loaders meet the most demanding specifications in the industry.

TECHNOLOGY

Bridgestone and its subsidiary companies develop and make raw materials such as natural rubber, synthetic rubber, carbon, and steel cord that are used in our Rubber Tracks.

BRIDGESTONE PROVING GROUND

Bridgestone's state-of-the-art Rubber Track proving grounds, located in Tochigi, Japan, assures the highest integrity designs for Rubber Tracks and under-carriage systems. A variety of real-world terrain conditions are maintained in order to establish consistency during the testing process.

LABORATORY BENCH TESTING

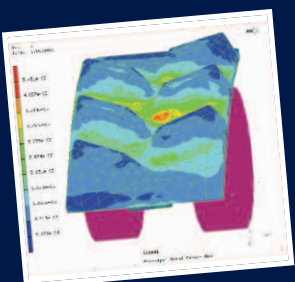
Laboratory bench testing is very important to accelerate evaluation under controlled conditions. Bridgestone's Rubber Tracks have been tested, evaluated, and proved.

FEM ANALYSIS SYSTEM

Bridgestone's academically established non-linear, large-displacement FEM analysis system helps engineers to create innovative technologies.

PRODUCT AND TECHNICAL ASSISTANCE

Bridgestone evaluates in real-world environments and proves products by using actual machines in actual field conditions throughout the world for all Rubber Track applications.



DESIGN AND CONSTRUCTION OF RUBBER TRACKS



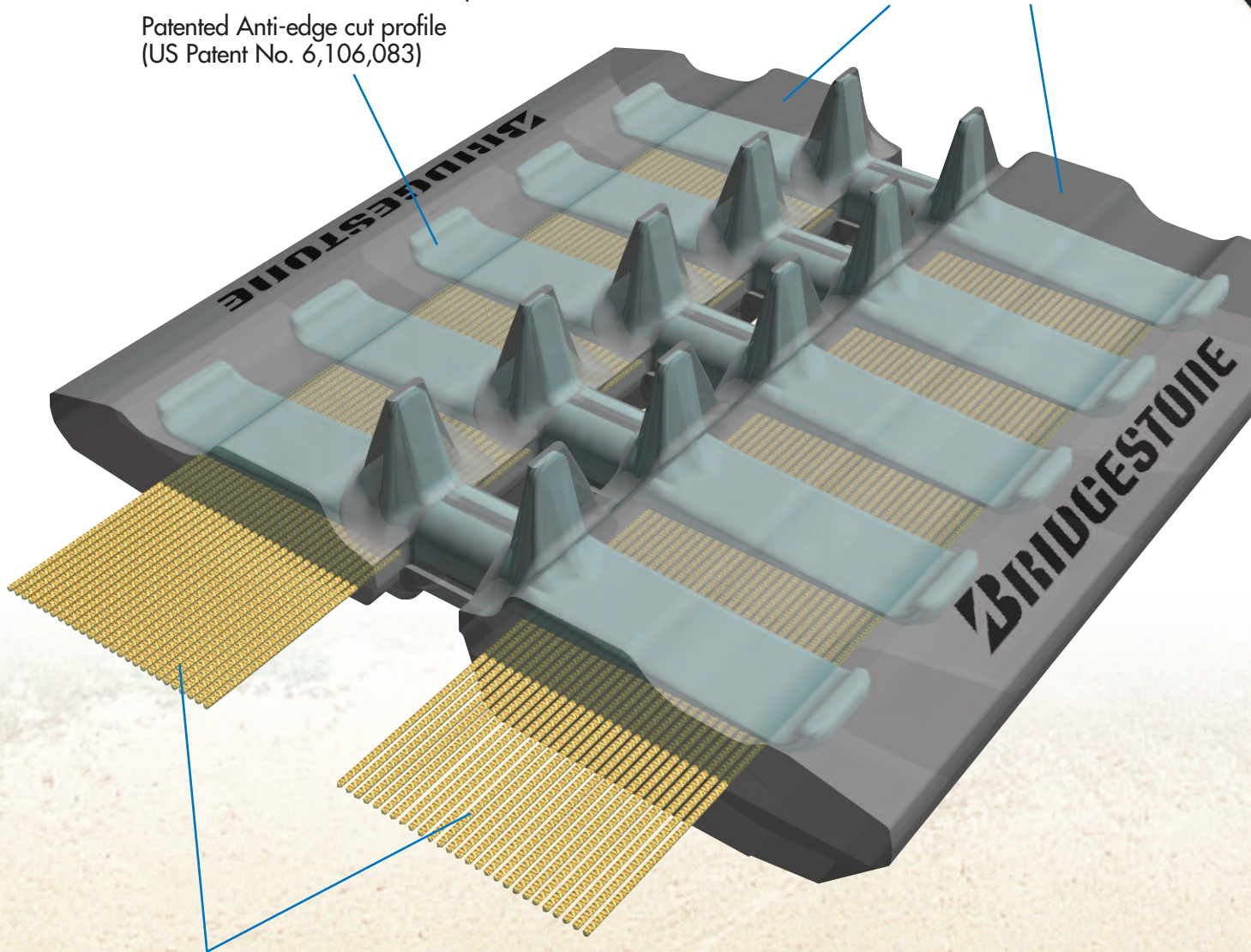
Pro-Edge™

Optimum Sidewall Protection Technology—utilizes forged iron and stress reducing winged embed design.

- Unique sidewall profile
- Specially formulated anti-cut/anti-gouge, abrasion resistant rubber compound

Patented Anti-edge cut profile (US Patent No. 6,106,083)

Reinforced Roller Path
For extended durability



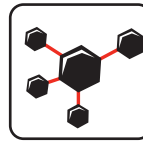
No-Wave Cable

Exclusively designed and manufactured for Rubber Tracks by Bridgestone.

- High Strength for maximum durability
- Ultra Flexible for power efficiency
- Compression and Stretch Resistant
- Anti-Corrosive Braiding Technology

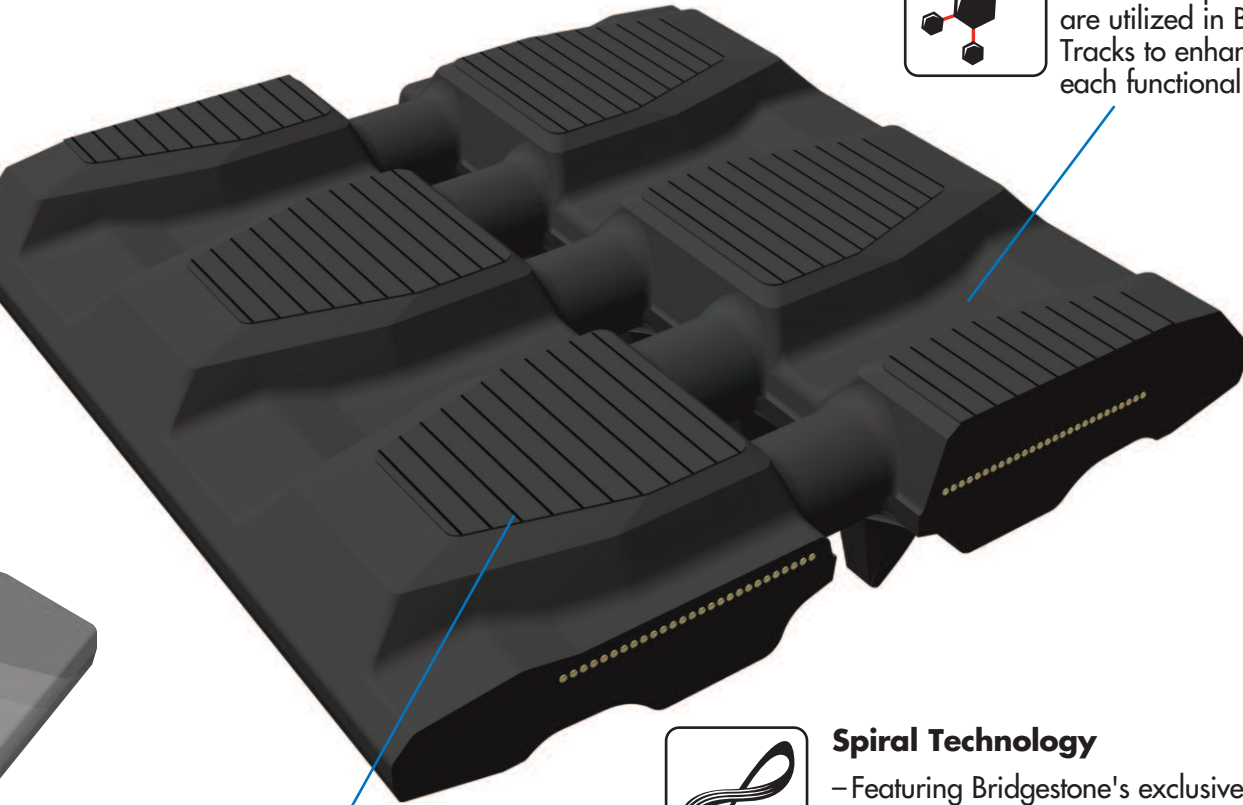


FOR TRACK LOADERS



Rubber Compounds

Several unique rubber compounds are utilized in Bridgestone Rubber Tracks to enhance performance in each functional area.



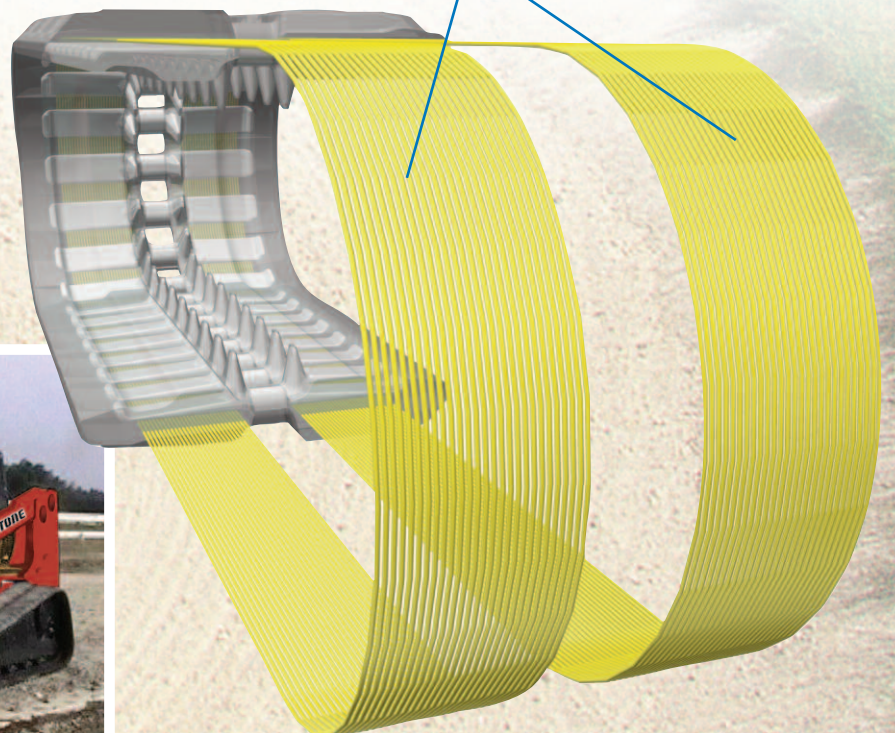
Spiral Technology

- Featuring Bridgestone's exclusive No-Wave Cable
- Essential for high speed, high power applications
- Even tension distribution
- Providing no pitch variance
- Accurate circumferential length
- Even traction distribution

Tread Design

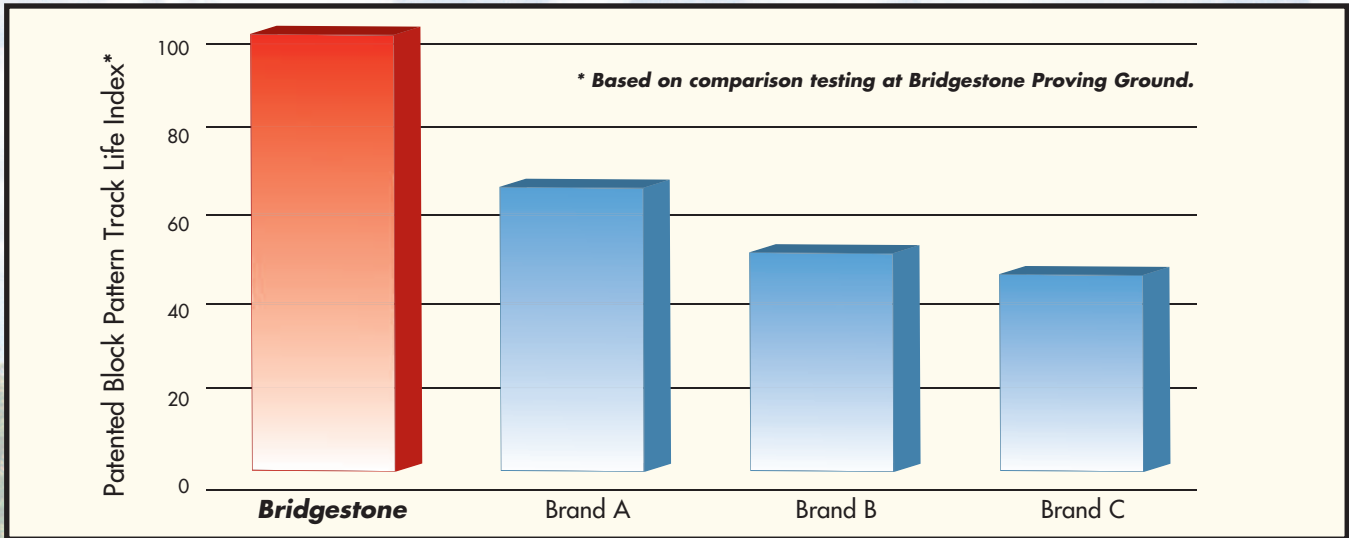
- Cut resistant, anti-gouge rubber compound
- Rounded profile tread bridge (patent pending)

Patented Tread Design
(US Patent No. D484,515 S)







ON THE RIGHT TRACK.

COMPARISON



PRODUCT AVAILABILITY**

** Bridgestone is constantly updating its products and availability. Contact your local Bridgestone sales representative or visit www.bridgestonerubbertrack.com

TEHNIICAL ATTRIBUTES (All Tracks)																			
	320mm				400mm					450mm									
TRACK WIDTH (mm)	320mm				400mm					450mm									
TRACK LENGTH (Pitches)	49	50	52	56	49	50	52	55	56	52	55	56	58	59					
PITCH LENGTH (mm)	86mm				86mm					86mm									
OPTIONAL TREAD PATTERNS	POLAR TREAD	POLAR TREAD	POLAR TREAD								POLAR TREAD	POLAR TREAD							

HOW TO GET THE MOST OUT OF YOUR RUBBER TRACKS

Bridgestone utilizes its vast experience to design and test Rubber Tracks for superior performance. But to get the most out of your Rubber Tracks, you must treat them with care. We recommend the following basic guidelines:

1. It is essential that you maintain the correct tension on your Rubber Tracks at all times. Check your machine operating manual for details.
2. Check the undercarriage components (i.e. sprocket, rollers and idler) for wear periodically. Wear and damage of undercarriage components will affect Rubber Track performance and durability.
3. Limit the use of your machine on large, sharp rocky surfaces and sharp steel edges.
4. Avoid fast sharp turns, and side slope turns.
5. Prevent large foreign objects from becoming entangled in your undercarriage.
6. Do not drive with Rubber Track sidewall edges pressing against hard walls, curbs and/or other objects.
7. If oil or similar products get on the Rubber Tracks, clean it off. Over time, oil will degrade the rubber quality.
8. When storing your machine for a period of time, keep it indoors away from rain and direct sunlight. If the machine must be stored outdoors, cover the Rubber Tracks to reduce exposure.



"The information contained in this publication is for guidance purposes only. While every effort has been made in its production, no responsibility can be accepted for any loss or damage arising from any undetected error. Any data supplied is subject to possible revision following the date of publication." Produced 09/09

Bridgestone Rubber Tracks are manufactured at facilities that are recognized for their quality of management by the highest international certification standards:



Quality Management Systems. ISO 9001/2000 Approved



Environmental Management Systems. ISO 14001

Your Local Dealer:

BRIDGESTONE

Bridgestone Industrial Products America, Inc.
www.bridgestonerubbertrack.com

©2009 Bridgestone Industrial Products America Inc. All rights reserved.
Bridgestone, Bridgestone "B", Passion for Excellence, Spiral Technology, Rubber Compounds and No-Wave Cable are trademarks of Bridgestone Corporation or one of its affiliated companies.