

**ONZLC**<sup>®</sup>  
NEW ZEALAND LANGUAGE CENTRES

2020  
*Create* YOUR OWN  
**NEW ZEALAND**  
**ENGLISH**  
EXPERIENCE



**LanguageCourse**<sup>net</sup> Book at worldwide lowest price at:

<https://www.languagecourse.net/discount-ryugaku/gakko-nzlc-new-zealand-language-centres-wellington.php3>

🇺🇸 +1 646 503 18 10  
🇧🇷 +31 858880253

🇬🇧 +44 330 124 03 17  
🇫🇷 +7 4995000466

🇪🇸 +34 93 220 38 75  
🇮🇹 +46 844 68 36 76

● +81 345 895 399

🇫🇷 +33 1-78416974  
🇳🇱 +47 219 30 570

🇧🇷 +55 213 958 08 76

🇨🇭 +41 225 180 700  
🇨🇭 +45 898 83 996

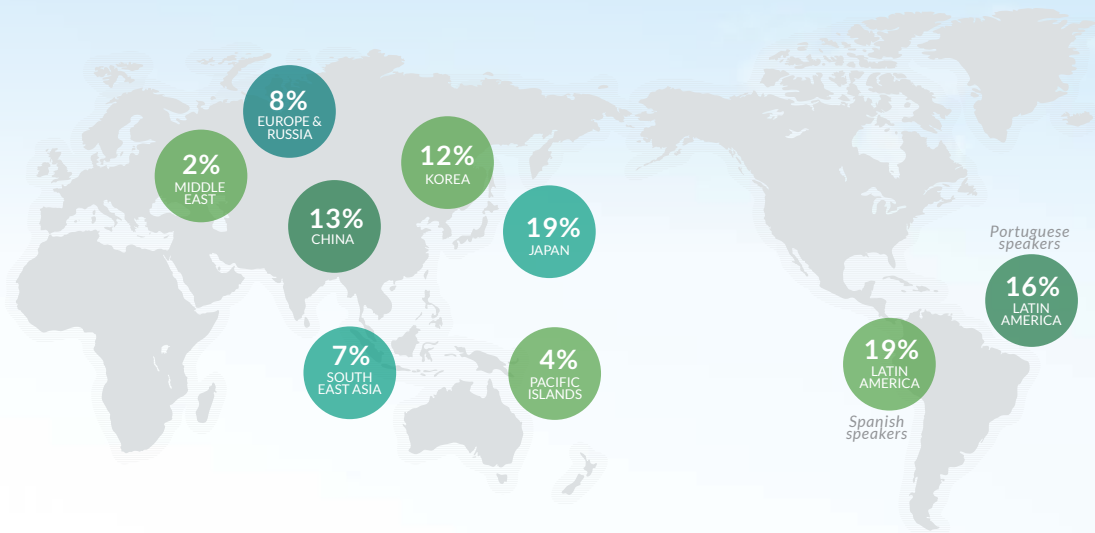
🇨🇭 +86 19816218990

🇩🇪 +49 221 162 56897  
🇮🇹 +39 02-94751194

🇯🇵 +43 720116182  
🇯🇵 +48 223 988 072



# WELCOME TO AN INDUSTRY LEADING ENGLISH LANGUAGE CENTRE



Over **3000** students from over **25** countries every year



1

**LanguageCourse**<sup>net</sup> Book at worldwide lowest price at: <https://www.languagecourse.net/discount-ryugaku/gakko-nzlc-new-zealand-language-centres-wellington.php3>

- 🇺🇸 +1 646 503 18 10
- 🇬🇧 +44 330 124 03 17
- 🇪🇸 +34 93 220 38 75
- 🇫🇷 +33 1-78416974
- 🇨🇭 +41 225 180 700
- 🇩🇪 +49 221 162 56897
- 🇯🇵 +43 720116182
- 🇧🇷 +31 858880253
- 🇮🇹 +7 4995000466
- 🇺🇦 +46 844 68 36 76
- 🇳🇱 +47 219 30 570
- 🇨🇦 +45 898 83 996
- 🇮🇹 +39 02-94751194
- 🇦🇺 +48 223 988 072
- 🇨🇳 +81 345 895 399
- 🇧🇷 +52 213 958 08 76
- 🇨🇳 +86 19816218990

## NZLC

p 3 - 4 About

## CAMPUSES

p 5 - 6 NZLC Auckland  
p 7 - 8 NZLC Wellington

## OUR SERVICES

p 9 - 10 Accommodation  
p 11 - 12 Student Services  
p 13 - 14 Study Support & Job Workshops  
p 15 - 16 Activities  
p 17 - 18 Specials and Packages

## OUR COURSES

p 19 - 20 2020 Course Calendar  
p 21 Level and Course Chart  
p 22 General English  
p 23 IELTS Preparation  
p 24 Pathway Programme  
p 25 Cambridge B2 First (FCE) & C1 Advanced (CAE)  
p 26 Business English  
p 27 - 28 English Teacher Training  
(CELTA/TE SOL/TECSOL/TKT)  
p 29 - 30 English for Young Learners  
p 31 - 32 Group Study Tours  
p 33 Testimonials

## ENROL & START

p 34 How to Enrol & First Day at NZLC



2



# GUARANTEED QUALITY

**98%** OF OUR GRADUATES SAID YES  
★★★★★

“Our Mission is to provide industry-leading English language education that enriches lives and creates pathways to new opportunities in New Zealand and beyond.”

“I will recommend or have recommended NZLC to my family / friends.”

“NZLC helped me to achieve my goal.”



## NZLC's Values:

**WE** are **OPEN**  
**CARE**  
**EMPOWER** people  
are a **COMMUNITY**

- ✔ We value new ideas, welcome feedback, and embrace change.
- ✔ We are ready to help and we take pride in everything we do.
- ✔ We inspire each other to grow.
- ✔ We respect diversity and we work together to create a positive local and global impact.



## NZLC's Team of Specialists

### ENGLISH LANGUAGE

Students can choose from General English, IELTS, University pathway, Cambridge B2 First (FCE), Cambridge C1 Advanced (CAE) or Business English; complimented by progress tests, goal setting and pathway planning.

### ENGLISH TEACHER TRAINING

NZLC is a CELTA Training Centre and a TKT Testing Centre, accredited by Cambridge Assessment English. We have courses for both native and non-native English speakers to become professional English teachers.

### YOUNG LEARNERS ENGLISH

NZLC is accredited by NZQA to teach young learners. Our General English/High School Preparation course is based on a Global Citizen programme. We also offer an English and Activities course during the holiday seasons.

### GROUP STUDY TOURS

Our team can make your student group programme a reality. Students can study English along with a homestay experience, sightseeing activities, weekend excursions, and workshops. NZLC can also create a special curriculum for your group.

### STUDENT SERVICES

We offer everything from accommodation arrangement to airport pick up; as well as activities, job workshops, study support and more. Our team is committed to helping you create new opportunities and your own complete New Zealand English experience!

### PROGRAMME DEVELOPMENT & RESEARCH

Through ongoing research and innovation our highly experienced team of specialists is committed to maintaining NZQA Category One assessment and to providing industry leading English language education and services.

### INTERNATIONAL PROGRAMME

If you have a group of people who need to improve specific English language skills or their English language teaching skills, then we can provide a customised programme anywhere in the world. Our trainers can come to you.

### CORPORATE SOCIAL RESPONSIBILITY

We monitor environmental standards and are committed to applying the principles of CSR to our practices. We are constantly considering the impact of our actions and operations within NZ and beyond.



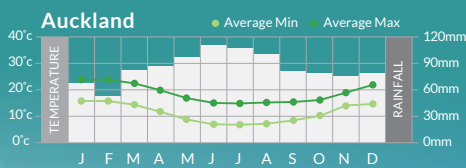


# AUCKLAND

Auckland is New Zealand's largest city with a population of 1.8 million. The city is surrounded by beautiful harbours, islands, beaches, vineyards and reserves. International events, festivals, concerts and exhibitions are hosted in Auckland throughout the year.

## "RANKED NO.1 FOR QUALITY OF LIVING"

amongst English-Speaking Countries (Mercer Survey 2019)



## NZLC AUCKLAND

- 450 – 550 students
- 40 classrooms
- Free WiFi
- 60 PCs
- Student kitchens & lounges
- Library
- Movie projector
- 2 campuses and additional campus available during peak season
- Free job workshops & CV check sessions p14
- Weekday & weekend activities p15-16
- Volunteer & community project opportunities
- First language support
- Free Pronunciation Workshop
- Free online study material access
- Free DVD rental

## COURSES

### General English & Academic English p22-26

- General English (Part Time/Full Time)
- IELTS (Part Time/Full Time) & Pathway
- Cambridge B2 First (FCE) / C1 Advanced (CAE)
- Business English
- TOEIC (Part Time)

### English Teacher Training p27-28

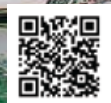
- Cambridge CELTA
- TESOL + TKT
- TECSOL + TKT

### Young Learners English (13 – 17yrs) p29-30

- General English/High School Prep & Pathway
- English + Activities Holiday Programme

### Others

- Private Lessons
- Group Study Tours p31-32
- Package Programme p17-18



ENJOY our video

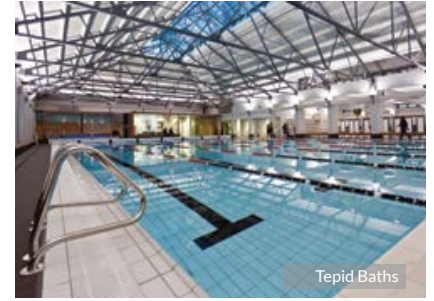




Student Lounge Main Campus



Main Campus



Tepid Baths



Academic Campus



Classroom



Viaduct



A few steps from the Viaduct Harbour



A few minutes' walk to the main street and public transport



Next door to a swimming pool, gym and sauna

## LOCATIONS

### Main Campus



Level 2,  
104 Customs Street West  
Auckland 1010, New Zealand



+64 (0)9 303 1962

### Academic Campus



Level 2,  
4 Hobson Street  
Auckland 1010, New Zealand



info@nzlc.ac.nz



AUCKLAND  
Campus  
location



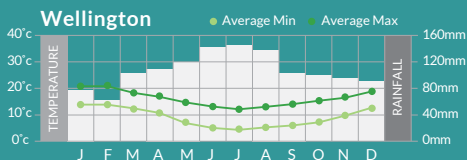
# WELLINGTON

From the moment you arrive in Wellington, you will be inspired by the city's art, café and music scene.

Wellington is the capital city of New Zealand with a population of 500,000.

## “THE WORLD'S COOLEST LITTLE CAPITAL”

(Lonely Planet 2011)



## NZLC WELLINGTON

- 90 - 120 students
- 9 - 12 classrooms
- Free Wi-Fi
- 30 PCs
- Student kitchen & lounge
- Library
- Movie projector
- Free job workshops & CV check sessions p14
- Weekday & weekend activities p15-16
- Volunteer & community project opportunities
- First language support
- Free Pronunciation Workshop
- Free online study material access
- Free DVD rental

## COURSES

### General English & Academic English p22-24

- General English (Part Time/Full Time)
- IELTS (Part Time/Full Time) & Pathway

### Others

- Private Lessons
- Group Study Tours p31-32
- Package Programme p17-18



LanguageCourse<sup>net</sup> Book at worldwide lowest price at:

<https://www.languagecourse.net/discount-ryugaku/gakko-nzlc-new-zealand-language-centres-wellington.php3>

+1 646 503 18 10  
+31 858880253

+44 330 124 03 17  
+7 4995000466

+34 93 220 38 75  
+46 844 68 36 76  
+81 345 895 399

+33 1-78416974  
+47 219 30 570  
+55 213 958 08 76

+41 225 180 700  
+45 898 83 996  
+86 19816218990

+49 221 162 56897  
+39 02-94751194

+43 720116182  
+48 223 988 072





Te Papa Museum



Dining



Surroundings



Reception Area



Graduation Day



Parliament House and The Beehive



5 minutes' walk away from Cuba St. and the city centre



Close to Te Papa and a range of other museums and galleries



Close to the waterfront and the best coffee shops

## LOCATION

🏠 Level 4, 186 Willis Street, Te Aro Wellington 6011, New Zealand

📞 +64 (0)4 802 4620

✉️ info@nzlc.ac.nz



**WELLINGTON**  
Campus location



🇺🇸 +1 646 503 18 10  
🇧🇷 +31 858880253

🇬🇧 +44 330 124 03 17  
🇯🇵 +7 4995000466

🇪🇸 +34 93 220 38 75  
🇮🇹 +46 844 68 36 76  
☎️ +81 345 895 399

🇫🇷 +33 1-78416974  
🇳🇯 +47 219 30 570  
🇧🇷 +55 213 958 08 76

🇨🇭 +41 225 180 700  
🇸🇪 +45 898 83 996  
🇨🇳 +86 19816218990

🇩🇪 +49 221 162 56897  
🇮🇹 +39 02-94751194

🇯🇵 +43 720116182  
🇺🇸 +48 223 988 072

# CHOOSE THE PERFECT ACCOMMODATION



9



# HOMESTAY

100% New Zealand multi-cultural experience



## HALF BOARD

Includes breakfast and dinner during the week and 3 meals on weekends. (Full Board and Twin Share options are also available)

## AVERAGE TRAVEL TIME

## PUBLIC TRANSPORT

Auckland	45 - 60 min	\$40 - 50 p/w
Wellington	30 - 60 min	\$30 - 40 p/w

# CITY ACCOMMODATION

Convenience & freedom in self-contained apartments or shared spaces (18 years old+)



If you are looking for more freedom and a convenient location or you would like to stay with your family or friends, city accommodation is for you! Ranging from budget to luxury, our partners provide a variety of accommodation options with both private or shared rooms and facilities available.



**CHECK**  
accommodation  
options

10

**LanguageCourse**<sup>net</sup> Book at worldwide lowest price at:

<https://www.languagecourse.net/discount-ryugaku/gakko-nzlc-new-zealand-language-centres-wellington.php3>

+1 646 503 18 10  
 +31 858880253

+44 330 124 03 17  
 +7 4995000466

+34 93 220 38 75  
 +46 844 68 36 76  
 +81 345 895 399

+33 1-78416974  
 +47 219 30 570  
 +55 213 958 08 76

+41 225 180 700  
 +45 898 83 996  
 +86 19816218990

+49 221 162 56897  
 +39 02-94751194

+43 720116182  
 +48 223 988 072

# TALK TO STUDENT SERVICES WHEN YOU NEED HELP



11

**LanguageCourse**<sup>net</sup> Book at worldwide lowest price at:  
<https://www.languagecourse.net/discount-ryugaku/gakko-nzlc-new-zealand-language-centres-wellington.php3>

🇺🇸 +1 646 503 18 10  
 🇧🇷 +31 858880253

🇬🇧 +44 330 124 03 17  
 🇩🇪 +7 4995000466

🇪🇸 +34 93 220 38 75  
 🇩🇰 +46 844 68 36 76

● +81 345 895 399

🇫🇷 +33 1-78416974  
 🇳🇴 +47 219 30 570

🇧🇷 +55 213 958 08 76

🇨🇭 +41 225 180 700  
 🇸🇬 +45 898 83 996

🇨🇳 +86 19816218990

🇩🇪 +49 221 162 56897  
 🇮🇹 +39 02-94751194

🇯🇵 +43 720116182  
 🇺🇸 +48 223 988 072



# ADVICE

About settling into life in NZ



## Bank Accounts / Visa Assistance



We can show you how easy it is to open a New Zealand bank account. We will also support you in your visa extension process.

## First Language Support



Our friendly Student Services team speak a range of languages to help you with your life in NZ.

## Internet / Wifi / Phones



FREE Internet and Wifi are available at our schools for your use! NZLC can also arrange reasonably priced phones, SIM cards and international calling cards.

## Public Transport Pass / Student ID



Once you arrive at NZLC, we will issue you a Student ID card which can give you various discounts. We can show you the cheapest way to buy your public transport pass.

## Accommodation Advice



Our Accommodation department is happy to offer advice when you look for a place to live in the city or stay on weekend trips.

## Job Workshops



Our FREE job workshops once a week will give you all the support to make your job search easy! [p14](#)

# STUDY SUPPORT

After-school language practice



## Study Plan & Advice



Our Academic and Student Services team will help you choose the perfect programme for you.

## Online Study Materials



You have access to various study materials which you can use during our school opening hours.

## Study Areas & Support



If you have any questions about your courses, you can ask our Academic team! We have dedicated study areas for you to use after school.

## Pronunciation Workshops / Conversation Practice / Debate Club



Join our after school FREE English programmes and improve your confidence and speaking skills!

## Course Information Sessions



Learn more about our academic courses, teacher training courses and pathway programmes to help you make the best study plan.

## TOEIC



All NZLC Auckland students can take the Friday PM TOEIC course for FREE!



# JOB WORKSHOPS

Available every week after school



FIND OUT  
more



- ✓ Au Pair
- ✓ Volunteering
- ✓ Café & Restaurant work
- ✓ Farm Stay or Fruit Picking
- ✓ Work Experience / Internship
- ✓ Casual/Seasonal/Part-time/Full-time work

## Job Tips



- How to apply for an IRD number
- What kind of work is available
- How to find a job
- How to set up a job interview
- What English level is required for different jobs

## CV & Cover Letter Writing Skills



- How to write a CV for the New Zealand market
- How to make an attractive CV
- How to write a cover letter

## Job Interview Skills



- How to make a good impression at the interview
- What to prepare
- How to present yourself
- What kind of questions will be asked

## Working in the Hospitality Industry



- Visit the Café & Bar Training School
- Information about Café, Bar & Barista Training
- Information about the Café Internship
- Special Packages [p18](#)

# ACTIVITIES

Have unforgettable experiences



## Something for you to enjoy everyday !

We offer a range of different after-school activities with a new calendar every month. You can try something different every day while meeting new friends from all over the world, practising your English and exploring our cities!

**PRACTISE  
ENGLISH  
WHILE  
HAVING FUN"**



**CHECK**  
our monthly  
Activity Calendar

15

### AFTER SCHOOL

- **Seasonal:**  
Parties & events
- **Sports:**  
Surfing, football, touch rugby, sailing, kayaking
- **Nature:**  
Farm visits, bush walking, bike riding
- **Entertainment:**  
Rugby games, music, local events
- **Cultural:**  
Maori shows, museums, BBQs
- **Sight-Seeing:**  
Sky Tower, Parliament House, city discovery, islands
- **Community Friendly:**  
Tree planting, nature clean-ups, volunteering, fundraising

### WEEKEND TRIPS

- **Day Trips:**  
Beaches, BBQs, wineries, horse riding, 'Lord of the Rings' film location tours
- **Overnight Trips:**  
Hiking, ski/snowboarding, bungee jumping, sky diving, snorkelling, diving, dolphin and whale cruises, hot springs, island discovery, New Zealand tours

**LanguageCourse**<sup>net</sup> Book at worldwide lowest price at:

<https://www.languagecourse.net/discount-ryugaku/gakko-nzlc-new-zealand-language-centres-wellington.php3>

🇺🇸 +1 646 503 18 10  
🇧🇷 +31 858880253

🇬🇧 +44 330 124 03 17  
🇫🇷 +7 4995000466

🇪🇸 +34 93 220 38 75  
🇩🇪 +46 844 68 36 76  
🇯🇵 +81 345 895 399

🇫🇷 +33 1-78416974  
🇩🇪 +47 219 30 570  
🇨🇦 +55 213 958 08 76

🇨🇭 +41 225 180 700  
🇨🇦 +45 898 83 996  
🇨🇳 +86 19816218990

🇩🇪 +49 221 162 56897  
🇮🇹 +39 02-94751194

🇺🇸 +43 720116182  
🇺🇸 +48 223 988 072





# SPECIALS AND PACKAGES



## NZLC CITY LINK

Free flights between Auckland and Wellington

**FREE return ticket (Wellington to Auckland or vice versa)**

ONE Enrolment Fee for TWO campuses (\$250)

ONE Accommodation Arrangement fee for TWO locations (\$250)

1. Select **NZLC CITY LINK** on the enrolment form.
2. Enrol in a full time course of 12 weeks or more in total.
3. Study a minimum of 4 weeks at each campus.
4. Receive a FREE return air ticket between both campuses.

\* Please check the full NZLC CITY LINK conditions on the NZLC Enrolment Form



## FAMILY AND FRIENDS SPECIAL

Share your study experience with a friend and save

This offer applies if two or three people enrol together, follow the same course dates and stay in the same accommodation.

No. of people	Enrolment Fee (not applicable for City Link)	Accommodation Arrangement fee	Auckland Airport Transfer (Adult)		Auckland Airport Transfer (YL*)		Wellington Airport Transfer	
			One-way	Return	One-way	Return	One-way	Return
1	\$250	\$250	\$130	\$220	\$130	\$250	\$75	\$120
2	\$175	\$175	\$100	\$165	\$100	\$190	\$60	\$90
3	\$125	\$125	\$90	\$150	\$90	\$170	\$50	\$80

Fees shown are per person in NZD. \*YL - Young Learner ( 13-17 years ).



### English + Barista



English Level: Intermediate +  
Barista Course Start: Every 2 weeks  
Time: 4:30pm - 7:30pm (after school)  
Course Completion Certificate: Yes  
Age: 18+  
NZLC: Minimum 4 weeks

Barista Basic PART 1: \$250 (3 day course)  
Barista Pro PART 1+2: \$417 (5 day course)  
Bartending & Cocktail: \$318 (3 day course)

**Note:** Combined programme with NZSFW.  
NZLC Auckland ONLY.

### English + Café Internship



English Level: Intermediate +  
Programme Start: Every Week  
Time: 2 hours a day  
Programme Completion Certificate: Yes  
Age: 18+  
NZLC: Minimum 4 weeks

Café Intern Placement Fee: \$35 (2 hour/day)

**Note:** Combined programme with NZSFW.  
Students must complete Barista Pro Part 1 + 2.  
NZLC Auckland ONLY.

### English + Sports/Culture



English Level: Pre-Intermediate to Advanced  
Programme Start: Varied  
Length: Varied  
Age: 13+ for NZLC Auckland  
18+ for NZLC Wellington  
NZLC: Minimum 2 weeks

Arrangement Fee: \$250 + actual cost

**Note:** NZLC will find an available option to suit your request. Please contact NZLC to find out more, e.g. football, swimming, dancing, cooking, flower arranging, community work, etc.

### English + Intern & Work Experience



English Level: Intermediate to Advanced  
Programme Start:  
After NZLC course completion  
Length: 1 week to 2 months  
Age: 18+  
NZLC: Minimum 4 weeks

Arrangement Fee: \$350 - 800

Requirement: Student Visa with work permit or Working Holiday Visa holder, relevant experience may be required  
Wages: No

**Tip!!** Join the NZLC FREE Job Workshops first before applying for this programme.

### English + Au Pair



English Level: Intermediate +  
Programme Start:  
After NZLC course completion  
Length: Minimum 3 months  
Age: 18+  
NZLC: Minimum 4 weeks

Arrangement Fee: up to \$400

Requirement: Working Holiday Visa holder, over 100 hours of experience with children, police certificate, reference letter (if applicable).  
Wages: Students can earn a wage depending on the working hours and qualification (e.g. \$120 is normally paid for 20h p/w), Accommodation & meals will be provided.

**Tip!!** Join the NZLC FREE Job Workshops first before applying for this programme.

### English + Farm Stay Experience



English Level: Pre-Intermediate +  
Programme Start: Every weekend  
Length: Minimum 1 day  
Age: 18+  
NZLC: Minimum 2 weeks

Arrangement Fee: \$250  
1 Day: \$400  
1 night 2 days: \$550  
2 nights 3 days: \$700

**Note:** The fees include pick up and drop off, accommodation (for over night stays), meals and farm stay experience.

### English + Rugby



English Level: Elementary +  
Programme Start: Every week during the season

NZLC Auckland ONLY.

#### (A) Local Team Programme

Local Team Programme: Minimum 4 weeks  
Season: February to mid-July  
Age: 18+  
NZLC: Minimum 2 weeks  
Local Team Programme schedule: Twice a week after school  
Requirement: Some experience playing Rugby

Programme Arrangement Fee: \$250  
Local team membership Fee: \$500/season (including first day group leader)

#### (B) Local Team Programme (A) + Auckland Rugby Academy Intensive Training

Local Team Programme (A): As above  
Intensive Rugby Training: Minimum 2 weeks  
Age: 18+  
NZLC: Minimum 4 weeks  
Intensive Rugby Training schedule: Full Day after graduation from NZLC

Programme Arrangement Fee: \$300  
Local team membership Fee: \$500/season (including first day group leader)  
Intensive Rugby Training Fee: \$600/week (including first day group leader and uniform)

\*Contact [info@nzlc.ac.nz](mailto:info@nzlc.ac.nz) for availability

# 2020 COURSE CALENDAR

NZLC®

		TERM 1										TERM 2											
		23-Dec*	30-Dec*	6-Jan	13-Jan	20-Jan*	27-Jan*	3-Feb*	10-Feb	17-Feb	24-Feb	2-Mar	9-Mar	16-Mar	23-Mar	30-Mar	6-Apr*	14-Apr*	20-Apr	28-Apr*	4-May	11-May	18-May
		11	12	1	2	3	4	5	6	7	8	9	10	1	2	3	4	5	6	7	8	9	10
GENERAL	<b>General English</b> Full Time / Part Time Weekly intake - Week 1 recommended	✓	✓	6 Jan (Start any Monday)										16 Mar (Start any Monday)									
	<b>Mid Term Survey</b> <b>Progress Tests</b> <b>Goal Setting</b>	✓	✓																				
ACADEMIC & CAMBRIDGE COURSES	<b>IELTS</b> Full Time / Part Time 5-40 weeks	✓	✓	6 Jan - 7 Feb					10 Feb - 13 Mar					16 Mar - 17 Apr					20 Apr - 22 May				
	<b>Business English</b> Full Time 5 weeks	✓		6 Jan - 7 Feb					10 Feb - 13 Mar					16 Mar - 17 Apr					20 Apr - 22 May				
	<b>Cambridge B2 First (FCE)</b> Full Time 10 or 12 weeks	✓		6 Jan - 13 Mar (10 weeks) B2 First (FCE) Exam - 13 Mar										16 Mar - 5 Jun (12 weeks) B2 First (FCE) Exam - 9 Jun									
	<b>Cambridge C1 Advanced (CAE)</b> Full Time 10 or 12 weeks	✓		6 Jan - 13 Mar (10 weeks) C1 Advanced (CAE) Exam - 14 Mar										16 Mar - 5 Jun (12 weeks) C1 Advanced (CAE) Exam - 10 Jun									
	<b>TOEIC</b> Part Time 5 weeks - 1 class per week: Friday PM	✓		10 Jan - 7 Feb					14 Feb - 13 Mar					20 Mar - 17 Apr					24 Apr - 22 May				
	<b>TESOL + Cambridge TKT</b> Full Time 5 weeks	✓		6 Jan - 7 Feb TKT - 8 Feb										16 Mar - 17 Apr TKT - 18 Apr									
TEACHER TRAINING	<b>TECSOL + Cambridge TKT</b> Full Time 5 weeks	✓							10 Feb - 13 Mar TKT - 13 Mar										20 Apr - 22 May TKT - 22 May				
	<b>Cambridge CELTA</b> Full Time 5 weeks	✓												16 Mar - 17 Apr									
YOUNG LEARNER	<b>YL General English / High School Prep</b> Full Time Weekly intake	✓		6 Jan (Start any Monday)										16 Mar (Start any Monday)									
	<b>English + Activities</b> Full Time Weekly intake during holiday season	✓		16 Dec - 31 Jan																			

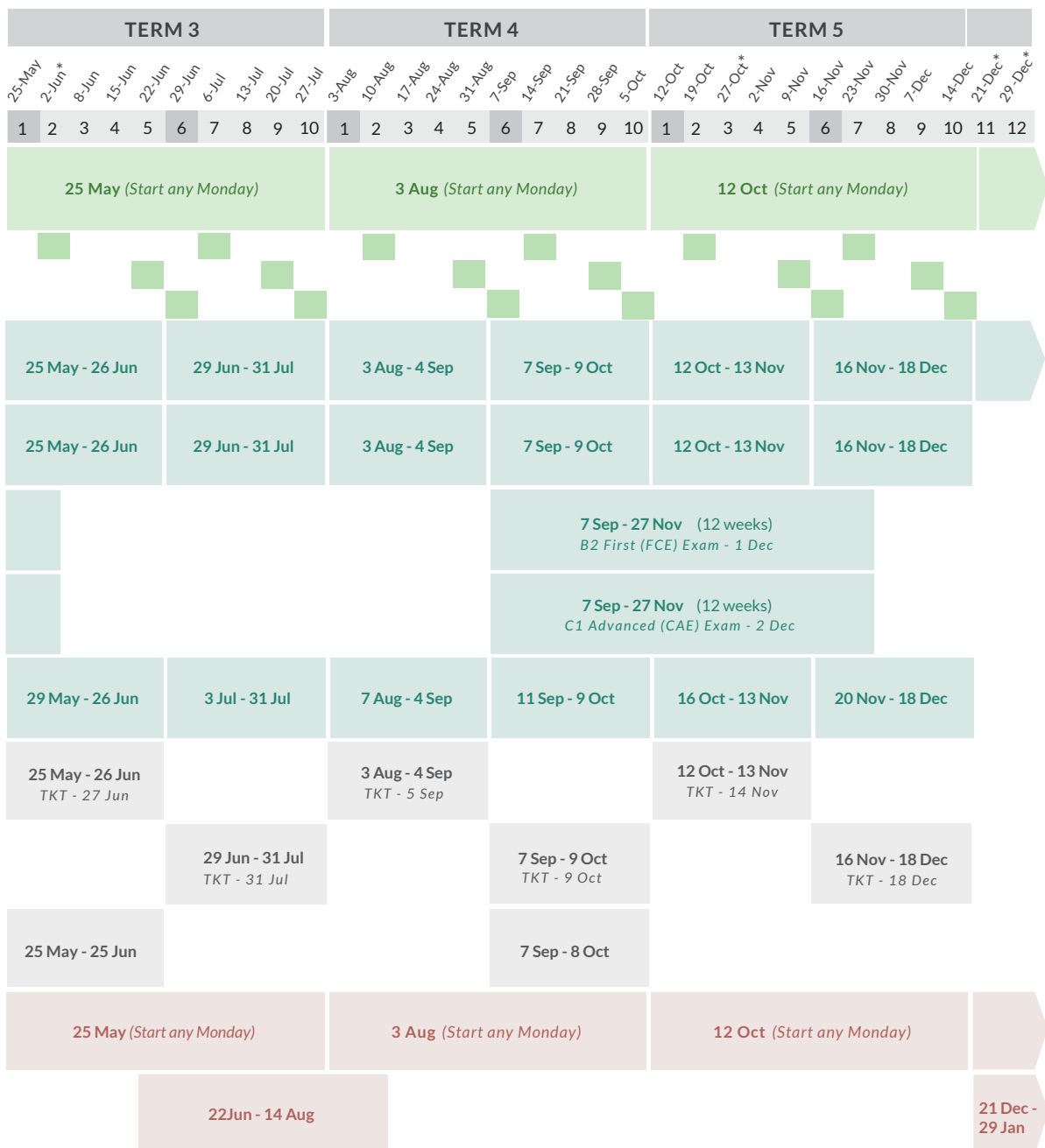
NZLC Schools are open all year except on weekends and public holidays in the year 2020.

The usual weekly tuition rates apply, and no refunds or time in lieu will apply for public holidays falling within the week of tuition.

In week 11 and/or 12 of Term 5, our General English and IELTS courses follow a special curriculum

as most of our students take holidays over this time. During these weeks, classes and teachers may change each week. Lessons will change focus depending on the students in class.





**\*2020 PUBLIC HOLIDAYS:**

1 & 2 Jan (New Year's), 20 Jan (Wellington Day - NZLC Wellington ONLY), 27 Jan (Auckland Day - NZLC Auckland ONLY), 6 Feb (Waitangi Day), 10 Apr (Good Friday), 13 Apr (Easter Monday), 27 Apr (ANZAC Day Observed), 1 Jun (Queen's Birthday), 26 Oct (Labour Day), 25 Dec (Christmas Day), 28 Dec (Boxing Day Observed)

# CHOOSE THE PERFECT PROGRAMME

## NZLC English Level and Course Chart

General English Level	CEFR Level (Common European Framework)	Cambridge Scale	Cambridge Exam	IELTS	Business English	English Teacher Training	TOEIC
	C2					CELTA	
Advanced	C1	180 - 200	C1 Advanced (CAE)	IELTS Adv Band 6.0 - 7.5	Business English Upper Int to Adv	TESOL / TECSOL with TKT Prep	945 - 990
Upper Intermediate	B2	160 - 180	B2 First (FCE)	IELTS Up Int Band 5.0 - 6.0			785 - 940
Intermediate 2	B1+	150 - 160		IELTS Int 2 Band 4.5 - 5.0	Business English Intermediate 1 & 2		550 - 780
Intermediate 1	B1	140 - 150		IELTS Int 1 Band 4.0 - 4.5			
Pre - Intermediate	A2	120 - 140					
Elementary	A1						
Beginner	Pre CEFR						

### MID TERM SURVEY

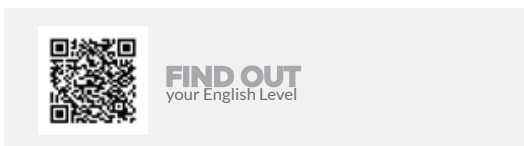
**NZLC values student feedback and always aims to maximise your New Zealand experience**

It is really important for us to know if our students are happy and well-supported. We conduct online feedback surveys every 5 weeks so that we can address any student concerns or questions, and understand how best to support you during your studies.

### TEACHING PHILOSOPHY

The connection between what we do in class and what happens outside of the class need to be seamless. Students do not practise life in the classroom; the classroom is life.

*"Education is not preparation for life; it is life itself"*  
- John Dewey



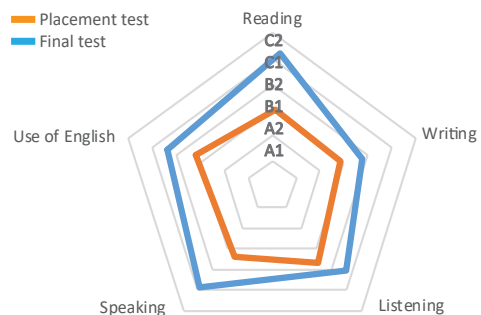
### FEEDBACK & GOAL SETTING

**Setting goals is the first step in turning your dreams into reality!**

We help you maximise your study time at NZLC by helping you identify your strengths and weaknesses. Students in General English and IELTS courses make an individual study plan with the help of their teacher every 5 weeks. The study plan will help you identify what you need to improve, and give you actionable and specific ways to improve it.

### PROGRESS REPORT DIAGRAM

All General English students receive a spider diagram in week 9 showing their progress against the CEFR (Common European Framework) levels.





# GENERAL ENGLISH

COMMUNICATE IN ENGLISH WITH CONFIDENCE IN ANY SITUATION!

## ? Why study General English at NZLC?

NZLC's General English courses are the best way for you to develop comprehensive English skills for education, work, social situations and travel in New Zealand and beyond.

- ✓ Taught by qualified, friendly and supportive teachers
- ✓ Weekly reviews
- ✓ Feedback and goal setting lesson every 5 weeks
- ✓ Pathway to NZLC Academic and English Teacher Training Courses
- ✓ Graduation certificate and Academic Report

### AM: Communicative Approach

Focuses on language systems, and listening, speaking, reading and writing skills.

### PM: Functional Approach

Builds confidence and fluency using practical, everyday language so that you can use what you learn straight away outside the classroom.

Communicate with **CONFIDENCE**

### Authentic Materials

Combines the best published materials with authentic resources from TV, radio, the internet and social media.

### Real-world Activities

Activities and project work give you opportunities to use English in real life situations so that English becomes part of your everyday life.

## COURSE INFORMATION

Levels	Beginner to Advanced
Entry test	Yes
Length	1 - 52 weeks / 1 level = 10 week cycle
Type	Full Time (23h p/w) AM Part Time (15h p/w) PM Part Time (8h p/w)
Course Starts*	Every Monday except Public Holidays (p19-20)
Campus	Auckland / Wellington
Class Size	12 (average) / 16 (max)
Age**	16+ Auckland / 18+ Wellington

\*Minimum number of students required

\*\*Acceptance of 16 and 17 year olds will be at the discretion of the Academic Department

## TIMETABLE

TIME	MON	TUE	WED	THU	FRI	SAT/SUN/HOL
09:00 - 10:30	LESSON					FREE TIME a variety of trips are available
10:30 - 10:45	BREAK					
10:45 - 12:15	LESSON					
12:15 - 13:15	LUNCH				TOEIC	
13:15 - 15:15	LESSON					
After School	Study Support / Activities / Student Services					
					Activities Weekend trips	

**LanguageCourse**<sup>net</sup> Book at worldwide lowest price at:

<https://www.languagecourse.net/discount-ryugaku/gakko-nzlc-new-zealand-language-centres-wellington.php3>

🇺🇸 +1 646 503 18 10  
🇧🇷 +31 858880253

🇬🇧 +44 330 124 03 17  
🇩🇪 +7 4995000466

🇪🇸 +34 93 220 38 75  
🇫🇷 +46 844 68 36 76  
🇯🇵 +81 345 895 399

🇫🇷 +33 1-78416974  
🇩🇪 +47 219 30 570  
🇯🇵 +55 213 958 08 76

🇨🇭 +41 225 180 700  
🇩🇪 +45 898 83 996  
🇨🇳 +86 19816218990

🇩🇪 +49 221 162 56897  
🇮🇹 +39 02-94751194

🇮🇹 +43 720116182  
🇮🇹 +48 223 988 072

# IELTS PREPARATION

LET US HELP YOU GET THE IELTS BAND SCORE YOU NEED!

## ? Why study IELTS at NZLC?

The International English Language Testing System (IELTS) assesses the English language proficiency of people who want to study or work where English is used as the language of communication. At NZLC, we offer industry-leading IELTS courses designed and managed by IELTS experts.

- ✓ Approved IELTS pre-testing centre
- ✓ Four levels in Auckland and two levels in Wellington
- ✓ Part-time or full-time course options
- ✓ FREE after school study support with individual feedback
- ✓ Weekly progress test and feedback
- ✓ Feedback and goal setting lesson every 5 weeks
- ✓ Full IELTS exam practice at least every 5 weeks
- ✓ Academic Pathway Programme
- ✓ Approved Student Visa Pathway Education Provider



General English Level	IELTS
Advanced	IELTS Advanced Band 6.0 - 7.5
Upper Intermediate	IELTS Up Intermediate Band 5.0 - 6.0
Intermediate 2	IELTS Intermediate 2 Band 4.5 - 5.0
Intermediate 1	IELTS Int 1 Band 4.0 - 4.5

## COURSE INFORMATION

Levels	Intermediate to Advanced
Entry test	Yes
Length	5 weeks (min) / 50 weeks (max) 1 level = 5 to 10 weeks per level
Type	Full Time (23h p/w) AM Part Time (15h p/w) PM Part Time (8h p/w)
Course Starts*	Every 5 weeks except Public Holidays (p19-20)
Campus	Auckland (3 - 4 levels) Wellington (1 - 2 levels)
Class Size	12 (average) / 16 (max)
Age**	16+ Auckland / 18+ Wellington

\*Minimum number of students required  
\*\*Acceptance of 16 and 17 year olds will be at the discretion of the Academic Department

## TIMETABLE

TIME	MON	TUE	WED	THU	FRI	SAT/SUN/HOL
09:00 - 10:30	AM IELTS - Reading & Writing					FREE TIME a variety of trips are available
10:30 - 10:45	BREAK					
10:45 - 12:15	AM IELTS - Reading & Writing					
12:15 - 13:15	LUNCH					
13:15 - 15:15	PM IELTS - Speaking & Listening				TOEIC Activities Weekend trips	
After School	Study Support / Activities / Student Services					

## Study Support

Students can receive extra feedback on their writing and speaking, individual advice about which IELTS resources to use, and help with IELTS test applications after school.



# PATHWAY PROGRAMME

CREATE YOUR PATHWAY TO NEW OPPORTUNITIES

## University Pathways Massey University

**NO IELTS score required** but must meet Massey University's academic requirements for the applied programmes.

### Completion level required at NZLC

Intermediate 2/CEFR B1+
Upper-Intermediate/CEFR B2
Upper-Intermediate/CEFR B2 (Young Learners)



### MASSEY UNIVERSITY

16 weeks Direct Entry English Pathway (DEEP)	⇒ Bachelor
16 weeks Direct Entry English Pathway - Advanced (DEEP Adv)	⇒ Postgraduate
Certificate in Foundation Studies (CFS)	⇒ Bachelor



## PATHWAY VISA

NZLC is under the pathway visa scheme

What students can do on a pathway visa:

- ✓ Stay for up to 5 years
- ✓ Study up to 3 courses, one after the other on a single student visa
- ✓ Work part time for up to 20 hours a week while they are studying and full time in the holidays, depending on the course of study
- ✓ The visa is only available for study with approved Pathway education providers and for some courses of study

# CAMBRIDGE EXAMS

OPENING THE DOOR TO SUCCESS IN ENGLISH

## ? Why study Cambridge B2 First (FCE) & C1 Advanced (CAE) at NZLC?

Cambridge English exams are the most recognised English exams in the world and are accepted by employers, educational institutions, Immigration NZ and government departments around the world. NZLC is proud of its very high student pass rate.

- ✓ Taught by qualified, supportive and friendly teachers
- ✓ High success rate
- ✓ Additional after-school study support up to twice a week
- ✓ Dedicated study areas with computers
- ✓ Extra study materials available and homework given regularly
- ✓ Regular progress tests and feedback
- ✓ Graduation certificate and Academic Report
- ✓ Guaranteed start dates



## COURSE INFORMATION

Levels	B2 First (FCE) / Upper-Intermediate & C1 Advanced (CAE) / Advanced
Entry test	Yes
Length	10 or 12 weeks
Type	Full Time (23h p/w)
Course Starts*	6 Jan, 16 Mar, 7 Sep (p19-20)
Campus	Auckland
Class Size	12 (max)
Age**	16+ Auckland

\*\*Acceptance of 16 and 17 year olds will be at the discretion of the Academic Department

## TIMETABLE

TIME	MON	TUE	WED	THU	FRI	SAT/SUN/HOL
09:00 - 10:30	LESSON					FREE TIME a variety of trips are available
10:30 - 10:45	BREAK					
10:45 - 12:15	LESSON					
12:15 - 13:15	LUNCH				TOEIC Activities	
13:15 - 15:15	LESSON				Weekend trips	
After School	Study Support / Activities / Student Services					

### Study Support

Students can receive extra feedback on their writing and speaking and individual advice about which Cambridge resources to use.



# BUSINESS ENGLISH

THE WHOLE WORLD BECOMES YOUR CAREER OPPORTUNITY

## ? Why study Business English at NZLC?

The 5 week Full-Time NZLC Business English course is very practical and focuses on commonly used English and communication skills at work.

- ✓ Taught by qualified, supportive and friendly teachers
- ✓ A focus on practical skills
- ✓ Extra Business English study materials available
- ✓ Regular progress tests and feedback
- ✓ Graduation certificate and Academic Report

## Business English includes:

- Meetings
- Telephone skills
- Networking
- Business writing (emails, formal letters, reports, writing for the internet, meeting agendas/minutes)
- Business etiquette in different cultures
- Presentation skills
- Customer service English
- Interview techniques



## COURSE INFORMATION

Level	Module 1: Upper Int to Advanced Module 2: Intermediate 1 and 2
Entry test	Yes
Length	5 weeks
Type	Full Time (23h p/w)
Course Starts*	Every 5 weeks (Auckland) (p19-20)
Campus	Auckland (2 levels)
Class Size	12 (average) / 16 (max)
Age**	16+ Auckland

\*Minimum number of students required  
\*\*Acceptance of 16 and 17 year olds will be at the discretion of the Academic Department

## TIMETABLE

TIME	MON	TUE	WED	THU	FRI	SAT/SUN/HOL
09:00 - 10:30	LESSON					FREE TIME a variety of trips are available
10:30 - 10:45	BREAK					
10:45 - 12:15	LESSON					
12:15 - 13:15	LUNCH				TOEIC Activities Weekend trips	
13:15 - 15:15	LESSON					
After School	Study Support / Activities / Student Services					

# ENGLISH TEACHER TRAINING

OPEN UP A WHOLE WORLD OF EXCITING TEACHING OPPORTUNITIES

## CELTA

Certificate in Teaching English to Speakers of Other Languages



Authorised Centre

### ? Why study CELTA at NZLC?

CELTA is an internationally recognised teaching qualification and is accepted throughout the world by organisations which employ English language teachers across the globe. It is suitable for people who want to start a career in English language teaching or those already teaching English with no formal qualification. NZLC runs unique 5 week full-time courses so you can have more time to prepare.



### COURSE INFORMATION

Levels	Native English speakers or equivalent (C1+ to C2)
Entry test	Yes
Length	5 weeks
Type	Full Time (35h p/w)
Course Starts*	16 Mar / 25 May / 7 Sep (p19-20)
Campus	Auckland
Class Size	12 (average) or 18 (max)
Age	18+

\*Minimum number of students required

### SAMPLE COURSE TIMETABLE (WEEK 1)

TIME	MON	TUE	WED	THU
09:30 - 10:50	Introduction to course	Receptive Skills	Vocabulary teaching	Presenting & Practising Language
11:10 - 12:30	Language Awareness	Skills Workshop	Phonology	Lesson Planning
13:30 - 14:00	Introduction Teaching Practice	Observation Feedback	Teaching Practice Feedback	
14:15 - 15:00	Supervised Lesson Planning	Supervised Lesson Planning		
15:30 - 17:30	Lesson Observation	Teaching Practice		





# TESOL

Teaching English to Speakers of Other Languages + TKT Preparation

## TESOL+ TKT Preparation includes:

- 4 Observed peer teaching practice sessions with oral and written feedback
- 1 Formally assessed final lesson with current NZLC students
- 2 assessed written assignments and homework
- TKT Modules 1, 2 and 3 Preparation

# TECSOL

Teaching English to Child Speakers of Other Languages + TKT Preparation

## TECSOL + TKT Preparation includes:

- A primary school visit and lesson observations
- Library visit to learn about their literacy support programmes
- 5 peer-teaching sessions with written and oral feedback
- 3 assessed written assignments and homework
- TKT Young Learner module preparation

## ? Why study TESOL & TECSOL at NZLC?

NZLC TESOL & TECSOL are intensive 5 week teacher training courses for non-native English speakers where you study both the theory and methodology of English Language Teaching to either adults (TESOL) or children aged between 6 and 12 years old (TECSOL). These NZQA approved courses are designed based on the Cambridge methodology and include peer teaching practice and TKT preparation.

- ✓ Pre-course task provided
- ✓ NZQA Level 4 approved course completion certificate
- ✓ Performance and progress reports at the end of course
- ✓ Tutor supported study time
- ✓ Work placement / work experience support provided
- ✓ Opportunity to work as a Teacher Aide at NZLC

## What is Cambridge English TKT? (Teaching Knowledge Test)

The TKT is a test that focuses on the teaching knowledge needed by English language teachers. The TKT has been developed for people who would like to teach English and would like to take an internationally recognised qualification to gain formal recognition. You will receive a certificate for each module completed.



## COURSE INFORMATION

Levels	Minimum Upper Intermediate (B2) IETLS 5.0 or subject to the interview
Entry test	Yes
Length	5 weeks
Type	Full Time (35h p/w = 25 contact hours + 5 hours supported self-study)
Course Starts*	Every 10 weeks for each course (p19-20)
Campus	Auckland
Class Size	12 (max)
Age	18+

\*Minimum number of students required

## TIMETABLE

TIME	MON	TUE	WED	THU	FRI	SAT/SUN/HOL
09:00 - 10:30			LESSON			FREE TIME a variety of trips are available
10:30 - 10:45			BREAK			
10:45 - 12:15			LESSON			
12:15 - 13:15			LUNCH			
13:15 - 14:30			LESSON PREPARATION AND FEEDBACK			
14:30 - 16:30			Teaching Practice			

# ENGLISH FOR YOUNG LEARNERS

IT'S NEVER TOO EARLY TO GET INTERNATIONAL EXPERIENCE!

## ? Why study the Young Learners English Programme at NZLC?

NZLC Auckland is accredited by NZQA for young learners between 13 and 17 years and we welcome students from all over the world. Our General English / High School Preparation course is guaranteed to run throughout the year. The programme is specially designed for young learners.

- ✓ Accredited by NZQA for young learners
- ✓ Safe and friendly homestay families and airport transfer
- ✓ Regular progress tests and report every 5 weeks
- ✓ Graduation certificate and Academic Report
- ✓ Optional extra caregiver support (\$100 - \$140 /w)
- ✓ High School & University Foundation Pathway and placement
- ✓ Approved Student Visa Pathway Education Provider



### COURSE INFORMATION

Levels	Beginner to Advanced
Entry test	Yes
Length	1 - 52 weeks
Type	Full Time on English + Activities (25h p/w) Every Monday except public holidays
Course Starts*	During the holiday season for English + Activities (p 19-20)
Campus	Auckland
Class Size	12 (average) / 16 (max)
Age**	13-17 years old

### TIMETABLE

TIME	MON	TUE	WED	THU	FRI	SAT/SUN/HOL
09:00 - 10:30	LESSON					FREE TIME a variety of trips are available
10:30 - 10:45	BREAK					
10:45 - 12:15	LESSON					
12:15 - 13:15	LUNCH					
13:15 - 15:15	LESSON (YL GE/HSP) or ACTIVITIES (English + Activities)					
After School	Study Support / Activities / Student Services					

\*Minimum number of students required  
\*\*Acceptance in adult General English and Academic courses for 16 and 17 years olds will be at the discretion of the Academic Department





## COURSE OPTIONS



**MORNING CLASSES**

The morning class approach is communicative, and learners are encouraged to use and practise the language as much as possible. The teaching methods are skills-based (reading, writing, listening and speaking) with vocabulary and grammar structures introduced around interesting and relevant themes to suit and motivate young learners.

**AFTERNOON CLASSES**

Afternoon classes focus on project-based learning centred around specific themes relevant to this age group. The learning outcomes are aligned with the NZ ESOL curriculum. For example, creating an information report or describing a process while also providing practice of 21st century skills such as critical thinking, virtual learning and technology in the classroom. The course also highlights the importance of a collaborative learning environment where cultural diversity is embraced.

### 6 CORE SKILLS OF THE NZLC YOUNG LEARNER Global Citizen



Critical Thinking



Creativity



Teamwork



Technology



Communication



Sustainability

**AFTERNOON ACTIVITIES**

Explore Auckland with fun cultural and sightseeing activities! From kayaking in the beautiful ocean, sailing in Auckland's viaduct harbour, meeting the iconic kiwi bird and more! Share memorable moments with friends in your class.



**ENJOY**  
our video  
of the YL English  
Programme



### Pathway to High School and University Foundation

An "NZLC Academic Recommendation Letter" will be issued upon successful completion and will help students gain entry into a local school.

### New Zealand Local School Standard Term Dates 2020

TERM	STARS	ENDS
Term 1	27 Jan - 7 Feb	9 April
Term 2	28 April	3 July
Term 3	20 July	25 Sep
Term 4	12 Oct	No later than 16 Dec

*Term 1 or 2 start recommended*

### Pathway Student Visa

Students can apply to study up to 3 consecutive courses on a single student visa for up to 5 years in New Zealand. For more details, please visit:  
[www.immigration.govt.nz](http://www.immigration.govt.nz)

### What accommodation options are there for Young Learners?

- NZLC Homestay
- Parent(s)
- A designated caregiver appointed by parent
- A local high school homestay family
- NZLC Education Consultant appointed homestay

# GROUP STUDY TOURS

CREATE AN ORIGINAL STUDY TOUR FOR YOUR GROUP TO MAXIMISE YOUR NEW ZEALAND EXPERIENCE

## ? Why choose NZLC for your Group Study Tour?

### ✓ 100% your style

The NZLC Study Tour Team can make your ideal programme a reality.

### ✓ Hassle FREE

NZLC can arrange every detail of your tour from arrival to departure.

### ✓ Flexible

NZLC can tailor the activities to meet your group's needs. Choose the length of your stay and size of your group.

### ✓ Experience and Reputation

NZLC has been hosting a wide variety of groups since 1984 and provides a safe and friendly environment.



## PROGRAMME INFORMATION

Levels	Beginner to Advanced
Entry test	Yes
Length	Any length
Type	Any type
Programme	Any time
Starts	Monday start recommended
Campus	Auckland & Wellington
Group Size	Minimum 8
Age*	13 yrs +

\* 13 years old + : closed classes or integrated classes (limited spaces)

## 2 WEEKS SAMPLE ITINERARY (English + Activities)

<b>WEEKEND</b> Arrive at Auckland airport and transfer to NZLC. Orientation and meet homestay family					
Week 1	<b>MON</b> AM - English PM - Sky Tower	<b>TUE</b> AM - English PM - Museum & Maori Show	<b>WED</b> AM - English PM - Devonport	<b>THU</b> AM - English PM - Wall Climbing	<b>FRI</b> AM - English PM - Sheepworld
	<b>WEEKEND</b> Enjoy time with homestay family or have a group day trip/over night trip outside of Auckland (e.g. Rotorua)				
Week 2	<b>MON</b> AM - English PM - Kelly Tarlton's Aquarium	<b>TUE</b> AM - English PM - Kayaking	<b>WED</b> AM - English PM - Auckland Zoo	<b>THU</b> AM - English PM - Shopping	<b>FRI</b> AM - English PM - Graduation Ceremony
	<b>WEEKEND</b> Transfer to Auckland airport and depart New Zealand				





## Programme Options for Group Study Tours

All options can be combined with General English, Academic English, English Teacher Training, or various activities.

### 1. PART TIME ENGLISH

**AM English Course**

#### AM English Course

Morning English class (approx 3 hours). Communicative approach. Focuses on language systems and listening, speaking, reading and writing skills.

### 2. FULL TIME ENGLISH

**AM English Course:**

**PM** – Functional approach. Builds confidence and fluency using practical, everyday language so that you can use what you learn straight away outside the classroom.

### 3. ENGLISH + ACTIVITIES

**AM English Course:**

**PM** – Your choice of activities/field trips (indoor/outdoor/educational activities/workshops) or a scheduled programme.

### 4. LOCAL SCHOOL

**AM English Course:**

**PM** – Activities at a local school and/or around the city.

### 5. SPECIAL COURSES

Choose from General English, Business English, IELTS, TOEIC, English Teacher Training. NZLC can also organise a tailored curriculum (e.g. nutrition).

### 6. GLOBAL CITIZEN ENGLISH PROGRAMME

**AM English Course:**

**PM** – Once a week field trip included. Through student-centred weekly projects, students are given authentic opportunities to communicate by investigating an issue, providing a solution, and publically presenting what they have learnt. Students then evaluate and reflect on the process, identifying what they have learnt and what they could do further to improve.

Sample project + field trip for closed classes:

- New Zealand Culture (Auckland Museum & Maori Show)
- Sustainability (Tree planting)
- Environment (Sustainable Coast Line)



GET YOUR  
**FREE  
QUOTE**

## What services can NZLC offer?

- Auckland and Wellington location
- Homestay and city accommodation options
- Integrated or closed classes
- Weekdays and weekend activities/field Trips
- First language support
- Airport transfers
- Public transportation pass
- Medical insurance
- Mobile phone SIM Card
- Farewell party
- Meals
- And more!



# STUDENT COMMENTS

LISTEN TO WHAT OUR STUDENTS SAY



## General English

Since I started studying at NZLC, my classes, teachers and classmates have helped me to achieve my goals. I am so happy with the quality of teaching here!

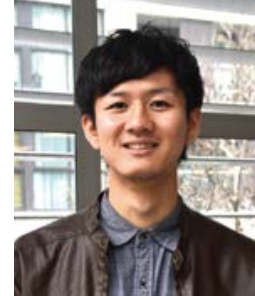
*Luiz Fernando Dos Santos Brito,*  
**BRAZIL**



## Business English

Choosing the NZLC Business Course was the best decision. I learnt so much useful vocabulary and I loved the individual feedback we got after our presentations.

*Paula Giraldo*  
**COLOMBIA**



## Cambridge B2 First (FCE)

The FCE teachers were amazing and my English improved dramatically after doing this course and now I have a certificate from Cambridge University which will last a lifetime!

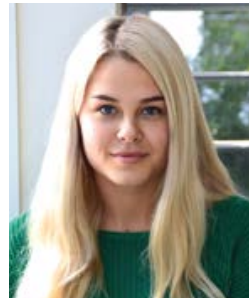
*Masaki Kotake*  
**JAPAN**



## IELTS

The advice and exercises given by the experienced IELTS teachers helped me to achieve a band score of 8.5! The nationality mix in the classes also provided a great study and social experience. I would definitely recommend this course.

*Nils Bouillard*  
**BELGIUM**



## YOUNG LEARNER

My teachers were very helpful and awesome! This school really helped me with my English and I'm so happy to study here!

*Kristina Polyaeva*  
**RUSSIA**



## TECSOL

I had no experience teaching before but the TECSOL course was amazing and made me really confident to teach children. Now I'm sure I can be a teacher! Thank you NZLC!

*Nisara Yodmum*  
**THAILAND**

# HOW TO ENROL

Create your own NZLC programme, and get started!

STEP  
1.

## Choose the courses and services you want

- Check for full details at [www.nzlc.ac.nz](http://www.nzlc.ac.nz) or contact [info@nzlc.ac.nz](mailto:info@nzlc.ac.nz)

STEP  
2.

## Complete the NZLC Enrolment Form

- Visit [www.nzlc.ac.nz](http://www.nzlc.ac.nz) and complete the NZLC enrolment form online or download it and send the completed form to: **Auckland:** [akenrol@nzlc.ac.nz](mailto:akenrol@nzlc.ac.nz) / **Wellington:** [wnenrol@nzlc.ac.nz](mailto:wnenrol@nzlc.ac.nz)
- NZLC will send you an offer letter and an invoice

STEP  
3.

## Send Payment and Flight Details

- Pay your fees and send NZLC your flight arrival details
- Check the enrolment deadlines below

STEP  
4.

## Receive Final Confirmation

- NZLC will send you a receipt of payment and a COE (Confirmation of Enrolment) You can use these documents to apply for a visa (if required)
- Once NZLC receives full payment and flight details, NZLC can begin to arrange accommodation and airport transfer services and will send you final confirmation

### Payment options

Bank Transfer, Cash, Western Union, TransferWise, EFTPOS or Credit Card (Visa or Mastercard)

- Please submit your enrolment, payment and flight details 4 - 8 weeks (see table on the right) prior to your start date in order for NZLC to arrange your services
- Make sure you allow enough time to apply for a New Zealand visa, where necessary
- For enrolments made less than the minimum required notice, please contact [info@nzlc.ac.nz](mailto:info@nzlc.ac.nz) to check course and service availability and the appropriate enrolment procedure

### NZLC Fee Protection

All student fees are transferred directly to an independent Trust Account. "Walker Wayland Auckland Ltd" is the nominated trustee for the protection of all NZLC student fees. Fees are released to NZLC by the Trustee on a drawdown basis as the student's course is provided by NZLC.

### Enrolment deadlines

Visa Type	Enrolment Form	Payment	Flight Details
Visitor* / Working Holiday / Residence	4 WEEKS	4 WEEKS	4 WEEKS
Student / Visitor**	8 WEEKS	8 WEEKS	4 WEEKS

NZLC reserves the right to decline the course or services if enrolment forms and details are not sent within the required timeframe.

Visitor\* - Visa-waiver countries / Visitors\*\* - Non Visa-waiver countries

# FIRST DAY AT NZLC

Be excited! Our friendly and welcoming staff will take good care of you.

### SAMPLE SCHEDULE

TIME	FIRST DAY
08:30 - 08:45	Arrive at School
08:45 - 09:00	Check-In
09:00 - 10:45	Welcome Speech/ Test / Admin
10:45 - 12:15	Orientation
12:15 - 13:15	Lunch
13:15 - 15:15	City tour & computer resources lessons
After School	Student Services/Activities/Study Support

### What to bring?

1. Passport & valid NZ visa
2. Insurance certificate and insurance policy in English
3. Your NZ contact address and phone number while in New Zealand
4. Taxpayer Identification Number or National Identity Number from your country (if you are planning to open a bank account in NZ)
5. Pens, a notebook and English dictionary
6. Re-usable water bottle





## AUCKLAND

-  **Main Campus**  
Level 2, 104 Customs Street West  
Auckland 1010, New Zealand
-  **Academic Campus**  
Level 2, 4 Hobson Street  
Auckland 1010, New Zealand
-  +64 (0)9 303 1962
-  info@nzlc.ac.nz

## WELLINGTON

-  Level 4, 186 Willis Street, Te Aro  
Wellington 6011, New Zealand
-  +64 (0)4 802 4620
-  info@nzlc.ac.nz

[www.nzlc.ac.nz](http://www.nzlc.ac.nz)



## TRAVEL TIMES



Auckland - Wellington	7 hours	1 hour
Auckland - Queenstown	21 hour 31 min	1 hour 40 min
Auckland - Christchurch	15 hour 58 min	1 hour 20 min
Wellington - Queenstown	8 hours	45 min
Wellington - Christchurch	15 hour 58 min	1 hour 45 min