

 **MONITOR AUDIO**<sup>®</sup>  
design for sound

Bronze<sup>BX</sup> series





## Bronze**BX**

This is Bronze BX, Monitor Audio's 'entry level' speaker range. Blending the best of its award-winning predecessors with advanced technologies from our up-market RX and flagship Platinum ranges, Bronze BX far exceeds the standards of performance and quality you'd normally expect from a speaker in its price class. By using ever more accurate computer simulations and the latest materials, we've fine-tuned our acclaimed Bronze Reference range to a new industry high, developing its astonishingly precise and

naturally dynamic sound to place Bronze BX on a level way beyond the capabilities of many more expensive rivals. In Bronze BX the benefits of our ceaseless search for audio purity are dedicated to your enjoyment of music and film audio. And BX is engineered for stunning aesthetic results as well. By harvesting greater accuracy and efficiency from comprehensive test and measurement data, our in-house teams have created a beautiful union of breathtaking fidelity and slender lifestyle design that represents the truest spirit of Monitor Audio. Bronze BX is a class apart.



Technical expertise

Performance

Innovation

Superior Design

Pride of ownership

## Definitive**Style**

Resplendent in a choice of high quality vinyl wood finishes in Walnut, Natural Oak, Rosemah and Black Oak and built with the accuracy that exemplifies the Monitor Audio brand world-wide, the seven slender Bronze BX models will look gorgeous in any room. From their smart range ID baffle-crowns to their precision-machined footings, the Bronze BX speakers project an understated elegance, which borrows styling cues from our range-topping Platinum speakers. Beneath the BX skin, a sophisticated acoustic design of dedicated driver chambers, rigid bracing, bolt-through drivers and hard-wired connections ensures that the sonic impact of Bronze BX is as tangible and three-dimensional as the silky BX cabinets themselves.

# Design For Monitor Audio's Entry level



## Single Bolt-Through Drivers

In utilising a design feature perfected for our highly acclaimed RX speakers, all BX drivers are secured on a single rigid bolt, which is fixed to the back panel and passes through the cabinet. This means that the driver effectively 'floats' in the front baffle and cannot transmit vibrations to the cabinet itself, thereby eliminating a common source of box colouration in more conventional speaker designs. The driver bolts also act to further brace the cabinet, adding rigidity and transparency to the system.

## C-CAM® tweeter

Ever more advanced computer simulation has allowed us to optimise the C-CAM (Ceramic-Coated Aluminium/Magnesium) tweeter design to deliver higher sensitivity, greater detail and a wider bandwidth beyond 30kHz. The new tweeter includes a dedicated chamber, which incorporates graduated damping to reduce undesirable resonances for a smoother more accurate response.



## C-CAM bass drivers

One of the key BX design features is the use of high performance C-CAM alloy for its bass drivers. C-CAM is extremely rigid and holds its shape during explosive film scenes and dynamic musical passages. It's also very light, giving high efficiency. This means that BX models will convey more dynamic detail at a naturally faster rate than ordinary speakers, so you can enjoy jaw-dropping musical resolution and movie surround sound action that enhances the highest definition pictures. To ensure ultimate reliability we've optimised the bass driver system with Finite Element Analysis (FEA), strengthening the chassis at critical points and perfecting a more precise motor action for greater accuracy and deeper, more liquid bass.







### **C-CAM mid-range drivers**

Advanced FEA has also helped us to realise greater linearity, efficiency and a wider response from the BX mid-range drivers. With improved voice-coil design and more agile motor assemblies, we've smoothed the off-axis response for more articulate mid-band detail and natural vocal timbre.

### **Magnetic grilles**

Bronze BX may be modestly priced, but it can still impart the spirit of luxury. To complement the slender proportions and precision finish of the BX design, magnetic grille attachment adds to a sense of fuss-free chic.

### **New crossovers**

Crossover design has been optimised for each BX speaker. Incorporating audiophile-grade components, the new PCB layouts keep paths as short as possible to maintain high levels of signal integrity.

### **HiVE®II Reflex Ports**

A technology developed for our flagship Platinum and mid-market RX speakers uses a series of rifled grooves inside the reflex port to speed the transit of air from the cabinet, resulting in more dynamic bass.



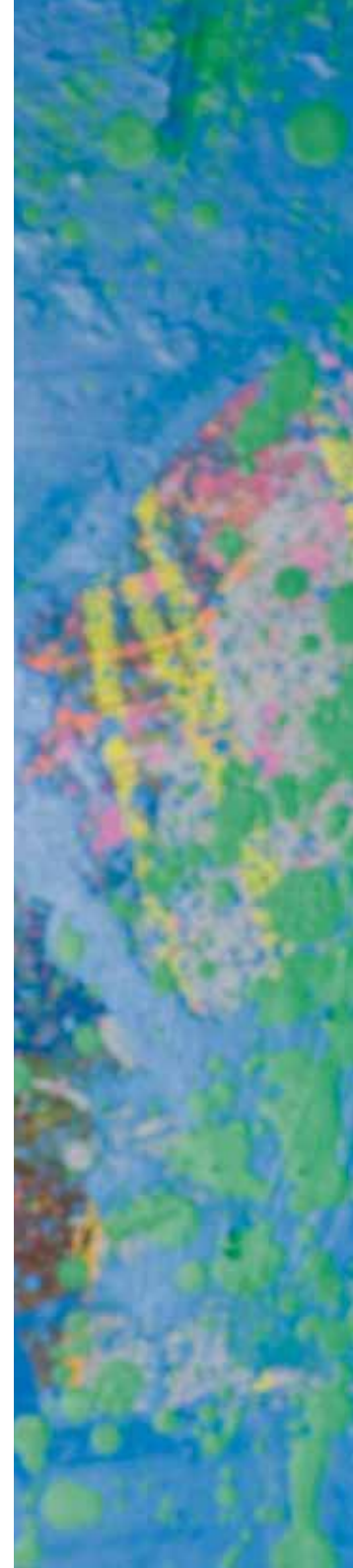
## Bronze<sup>BX1</sup>

The innovative BX1 squeezes the performance of a much larger speaker into a format that's easy to enjoy anywhere in the home. A wider more consistent frequency response from its C-CAM drivers will give you the fidelity and bandwidth you'll need to liberate the essence of your music and film favourites, while leaving the choice of installation options wide open. The two-way BX1 utilises a single 140mm (5 1/2") C-CAM bass driver and 25mm (1") C-CAM tweeter in a system designed to defy the usual size/performance assumptions.



## Bronze<sup>BX2</sup>

The BX2 develops the considerable talents of its award-winning BR2 forerunner to a new intensity. Improved crossover and driver designs combine to re-calibrate the capabilities of an acknowledged class champion, bringing greater dynamic expression, mid-range clarity and lower distortion to lovers of music and film sound. Loaded with a 165mm (6 1/2") C-CAM bass driver and 25mm (1") C-CAM tweeter, the BX2's high quality cabinet mirrors the unobtrusive dimensions of the celebrated BR2, and so is easy to position, even in smaller rooms. Compact in size, but equipped to reproduce sound of immense stature and detail, the BX2 is our new definitive budget blockbuster.







**WHAT HI\*FI?**  
SOUND AND VISION  
**AWARDS 2011**

**STEREO SPEAKERS & SUBWOOFERS**  
BEST STEREO SPEAKER £200-£350  
**MONITOR AUDIO BRONZE BX2**

**WHAT HI\*FI?**  
SOUND AND VISION  
**AWARDS 2010**

**PRODUCT OF THE YEAR**  
STEREO SPEAKERS  
**MONITOR AUDIO BRONZE BX2**

Enthralling sound in two channel and multi-channel systems







## Bronze<sup>BX</sup>5

The slender BX5 represents a careful re-tuning of the acclaimed BR5 floor-standing model, adding further bandwidth and resolution to a recognised class act. Its sophisticated 2 1/2-way system of twin 140mm (5 1/2") C-CAM drivers and 25mm (1") C-CAM tweeter is perfected through a series of internal chambers providing the optimum operating environment for each driver and lending further rigidity to the cabinet. For such a modestly priced speaker, the BX5 is exceedingly coherent, having the transparency to expose the texture of complex musical passages and the control to communicate the natural dynamics of every performance. Astride the driver-matched BX Centre in a multichannel system, the BX5 will deliver a captivating blend of stratospheric highs, percussive mid-band and gripping bass extension for mesmerising three-dimensional AV fidelity.





## Bronze<sup>BX6</sup>

The flagship BX6 offers the fluid neutrality of the BX5 but brings the scale of its larger 2 1/2 way system into play. This potent configuration of twin 165mm (6 1/2") C-CAM bass drivers, single 165mm (6 1/2") C-CAM mid-bass driver and 25mm (1") C-CAM tweeter adds effortless authority to a long list of BX range virtues. The drivers work in tandem with a rigid multi-chamber structure to reveal greater muscularity and refinement in music and film sound. Still, the BX6 retains the elegant room-friendly proportions of the BX5 - its deceptively compact cabinet, finished in any of the beautiful BX vinyl wood finishes, will enhance the look of any environment.





## Bronze **BXW-10**

The BXW-10 subwoofer represents a significant step up from its predecessor, the highly regarded BRW10. It's as compact as its forerunner, but more potent in every respect. A 10" C-CAM driver and 200 watt Class-D power amplifier have been devised in tandem to provide class-leading standards of control, speed and punch. Featuring a new, fully integrated switch mode power supply, the new amplifier develops considerably more power than its predecessor, adding grip and clean bass delivery below 30Hz. A range of beautiful vinyl wood finishes provides the superlative looks to complement its accomplished deep bass performance.





## Bronze<sup>BX</sup>centre

For the BX Centre we've demolished the limitations of entry-level design by creating a speaker that reproduces voice with unfailing detail and accuracy. Its system of twin 140mm (5 1/2") C-CAM drivers and 25mm (1") C-CAM tweeter complements the driver architecture of other BX series speakers, to create a wide and detailed front sound-stage, characterised by pin-point imaging.



## Bronze BX-FX

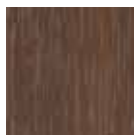
The versatile BX-FX dual-mode surround speaker adds the facility to switch dispersion for side or rear channel use, allowing the BX-FX to optimise five or seven channel systems. Utilising a single 140mm (5 1/2") C-CAM bass/mid-range driver flanked by two 25mm (1") C-CAM tweeters on angled baffles, the super-compact BX-FX is easy to position for amazing surround effects and is available in the BX range of finishes for a closer décor blend.



# Bronze**BX** Specifications



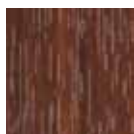
Black Oak



Walnut



Natural Oak



Rosemah



To discover how we reach music lovers all over the world, please visit:  
[monitoraudio.com](http://monitoraudio.com)



	BX1	BX2	BX5	BX6	BXCenter	BXFX
System Format	2 Way	2 Way	2 1/2 Way	2 1/2 Way	2 Way	2 Way
Frequency Response	55Hz – 30kHz	42Hz – 30kHz	36Hz – 30kHz	34Hz – 30kHz	60Hz – 30kHz	65Hz – 30kHz
Sensitivity (dB) 1w@1m	88	90	90	90	90	88
Nominal Impedance (ohms)	8	8	8	8	8	8
Power Handling Single R.M.S (W)	70	100	120	150	120	80
Recommended Amp Requirements R.M.S (W)	15-70	30-100	30-120	40-150	20-120	25-80
Cabinet Design	Rear ported bass reflex. HiVe®II port technology	Front ported bass reflex. HiVe II port technology	Dual chamber Bass reflex - Ported front and rear. HiVe II port technology	Dual chamber Bass reflex - Ported front and rear. HiVe II port technology	Sealed cabinet	Sealed cabinet
Drive Unit Complement mm (inches)	1 x 140mm (5 <sup>1/2</sup> ) C-CAM® bass mid-range driver. 1 x 25mm (1") gold dome C-CAM tweeter.	1 x 165mm (6 <sup>1/2</sup> ) C-CAM bass mid-range driver. 1 x 25mm (1") gold dome C-CAM tweeter.	1 x 140mm (5 <sup>1/2</sup> ) C-CAM bass. 1 x 140mm (5 <sup>1/2</sup> ) C-CAM bass mid-range driver. 1 x 25mm (1") gold dome C-CAM tweeter.	2 x 165mm (6 <sup>1/2</sup> ) C-CAM bass. 1 x 165mm (6 <sup>1/2</sup> ) C-CAM bass mid-range driver. 1 x 25mm (1") gold dome C-CAM tweeter.	2 x 140mm (5 <sup>1/2</sup> ) C-CAM bass mid-range driver. 1 x 25mm (1") gold dome C-CAM tweeter.	1 x 140mm (5 <sup>1/2</sup> ) C-CAM bass mid-range driver. 2 x 25mm (1") gold dome C-CAM tweeter.
Crossover Frequency	3.2kHz	3.2kHz	LF: -6dB @400Hz MF/HF: 3.2Hz	LF: -6dB @600Hz MF/HF: 3.4Hz	3.2kHz	2.2kHz
External Dimensions H x W x D (mm)	260 x 165 x 180	350 x 185 x 255	850 x 166 x 248 (868 x 215 x 282 inc plinth)	985 x 185 x 315 (1003 x 235 x 350 inc plinth)	166 x 460 x 165	287 x 276 x 105 (118 deep inc grille & bracket)
External Dimensions HxWxD (inches)	10 <sup>1/4</sup> x 6 <sup>1/2</sup> x 7 <sup>1/16</sup>	13 <sup>3/4</sup> x 7 <sup>5/16</sup> x 10 <sup>1/16</sup>	33 <sup>7/16</sup> x 6 <sup>9/16</sup> x 9 <sup>3/4</sup> (34 <sup>3/16</sup> x 8 <sup>7/16</sup> x 11 <sup>1/8</sup> inc plinth)	38 <sup>3/4</sup> x 7 <sup>5/16</sup> x 12 <sup>3/8</sup> (39 <sup>1/2</sup> x 9 <sup>1/4</sup> x 13 <sup>3/4</sup> inc plinth)	6 <sup>9/16</sup> x 18 <sup>1/8</sup> x 6 <sup>1/2</sup>	11 <sup>5/16</sup> x 10 <sup>7/8</sup> x 4 <sup>1/8</sup> (4 <sup>5/8</sup> deep inc grille & bracket)
Product Weight kg (lbs)	3.86 (8.5)	5.84 (12.8)	12 (26.4)	18.25 (40.2)	6.18 (13.6)	3.62 (8)

	BXW10
Low frequency limit	27Hz
Upper frequency limit	40-150Hz (variable low pass filter)
Low pass filter alignment	12dB/Octave variable + 12dB Octave fixed @ 150Hz
Amplifier Output	200W R.M.S
Amplifier classification	Class D with switch mode PSU
Cabinet alignment	Sealed box
Input Impedance	20K ohms
Input Connections	2 x stereo RCA, 1 x LFE RCA connection
Drive unit complement	1 x 10" C-CAM Long throw subwoofer driver
External Dimensions H x W x D (mm)	320 x 320 x 330 (336 High inc feet)
External Dimensions H x W x D (inches)	12 <sup>5/8</sup> x 12 <sup>5/8</sup> x 13 (13 <sup>1/4</sup> High inc feet)
Mains input voltage	110-120 Vac - 50-60Hz 220-240 Vac - 50-60Hz. Factory region pre-set.
Standby power consumption	0.17 watts (ErP certified)
Product Weight Kg (lbs)	10.92 (24)

\*Electronics kindly supplied by - Onkyo: [www.onkyo.com](http://www.onkyo.com)



Monitor Audio Ltd  
24 Brook Road, Rayleigh  
Essex, SS6 7XJ  
England  
Tel: + 44 (0)1268 740580  
Fax: + 44 (0)1268 740589  
Email: [info@monitoraudio.co.uk](mailto:info@monitoraudio.co.uk)

[monitoraudio.com](http://monitoraudio.com)  
Designed in the United Kingdom