

## **BROWNING...OFFERS THE LARGEST SELECTION OF V-BELTS IN THE UNIVERSE!**

*Browning is universally known for V-belt drives. In fact, nowhere else can you find such a complete range of V-belting — and the sheaves to run them — all in stock. Choose the type that's best for your application — classical, "358", Gearbelt®, Poly-V\*, Gripnotch®, FHP.*

B

*And there's no problem with matched belt sizes either. Browning now offers the **CODE 1®** one match belt system on all classical and "358" belts, allowing easy selection with just one match number for each belt size. The **CODE 1** symbol on any Browning belt indicates matching tolerances tighter than RMA (Rubber Manufacturers Association) standards. Machine matching of belts is also available for critical match requirements.*

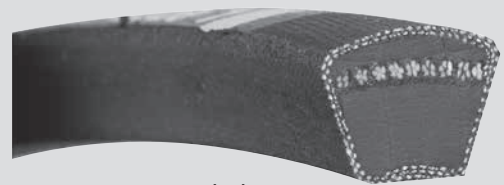
*Wherever you are in the universe — make Browning your first choice in V-belts, There's a Browning Distributor near you to give you prompt service and delivery.*



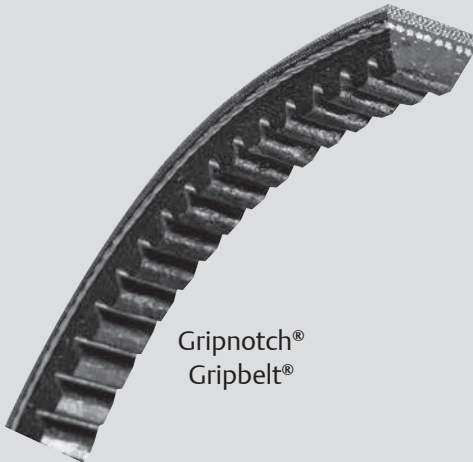
"358" Gripbelt



Double V-Gripbelt



Super Gripbelt

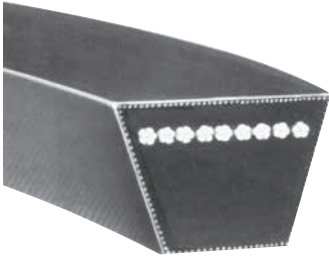


Gripnotch® Gripbelt®



Gripband Gripbelt

\* Poly-V is believed to be the trademark and/or trade name of Veyance Technologies, Inc., and is not owned or controlled by Regal Power Transmission Solutions.



**"A" Belts**  
1/2" x 5/16"



**"B" Belts**  
21/32" x 7/16"



**"C" Belts**  
7/8" x 17/32"



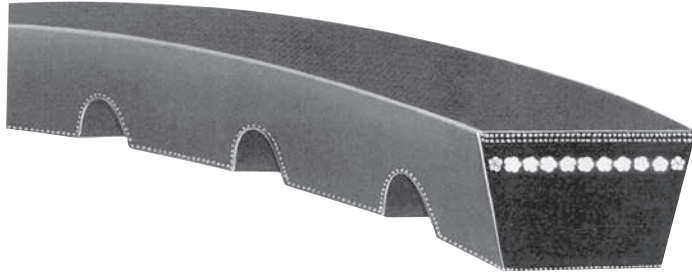
**"D" Belts**  
1 1/4" x 3/4"

Super Gripbelt® V-belts are static conducting

Table No. 1

**Stock Sizes**

Belt No.	Length		Wt. Lbs.	Belt No.	Length		Wt. Lbs.	Belt No.	Length		Wt. Lbs.	Belt No.	Length		Wt. Lbs.
	Outside	Pitch			Outside	Pitch			Outside	Pitch			Outside	Pitch	
A21	23.2	22.3	.2	A90	92.2	91.3	.6	B74	77	75.8	0.8	C75	79.2	77.9	1.4
A22	24.2	23.3	.2	A91	93.2	92.3	.6	B75	78	76.8	0.8	C78	82.2	80.9	1.5
A23	25.2	24.3	.2	A92	94.2	93.3	.6	B76	79	77.8	0.8	C81	85.2	83.9	1.6
A24	26.2	25.3	.2	A93	95.2	94.3	.6	B77	80	78.8	0.8	C85	89.2	87.9	1.6
A25	27.2	26.3	.2	A94	96.2	95.3	.6	B78	81	79.8	0.8	C90	94.2	92.9	1.7
A26	28.2	27.3	.2	A95	97.2	96.3	.6	B79	82	80.8	0.8	C96	100.2	98.9	1.8
A27	29.2	28.3	.2	A96	98.2	97.3	.7	B80	83	81.8	0.9	C97	101.2	99.9	1.8
A28	30.2	29.3	.2	A97	99.2	98.3	.7	B81	84	82.8	0.9	C99	103.2	101.9	1.9
A29	31.2	30.3	.2	A98	100.2	99.3	.7	B82	85	83.8	0.9	C100	104.2	102.9	1.9
A30	32.2	31.3	.2	A100	102.2	101.3	.7	B83	86	84.8	0.9	C101	105.2	103.9	1.9
A31	33.2	32.3	.2	A103	105.2	104.3	.7	B84	87	85.8	0.9	C105	109.2	107.2	2.0
A32	34.2	33.3	.2	A105	107.2	106.3	.7	B85	88	86.8	0.9	C108	112.2	110.9	2.0
A33	35.2	34.3	.2	A110	112.2	111.3	.8	B86	89	87.8	1.0	C109	113.2	111.9	2.0
A34	36.2	35.3	.2	A112	114.2	113.3	.8	B87	90	88.8	1.0	C111	115.2	113.9	2.1
A35	37.2	36.3	.2	A120	122.2	121.3	.8	B88	91	89.8	1.0	C112	116.2	114.9	2.1
A36	38.2	37.3	.3	A128	130.2	129.3	.9	B89	92	90.8	1.0	C115	119.2	117.9	2.1
A37	39.2	38.3	.3	A136	138.2	137.3	.9	B90	93	91.8	1.0	C120	124.2	122.9	2.3
A38	40.2	39.3	.3	A144	146.2	145.3	1.0	B91	94	92.8	1.0	C124	128.2	126.9	2.4
A39	41.2	40.3	.3	A158	160.2	159.3	1.1	B92	95	93.8	1.0	C128	132.2	130.9	2.4
A40	42.2	41.3	.3	A173	175.2	174.3	1.2	B93	96	94.8	1.0	C136	140.2	138.9	2.6
A41	43.2	42.3	.3	A180	182.2	181.3	1.2	B94	97	95.8	1.0	C144	148.2	146.9	2.8
A42	44.2	43.3	.3	B25	28	26.8	.3	B95	98	96.8	1.0	C148	152.2	150.9	2.8
A43	45.2	44.3	.3	B26	29	27.8	.3	B96	99	97.8	1.1	C150	154.2	152.9	2.9
A44	46.2	45.3	.3	B28	31	29.8	.3	B97	100	98.8	1.1	C158	162.2	160.9	3.0
A45	47.2	46.3	.3	B29	32	30.8	.3	B98	101	99.8	1.1	C162	166.2	164.9	3.1
A46	48.2	47.3	.3	B30	33	31.8	.3	B99	102	100.8	1.1	C173	177.2	175.9	3.3
A47	49.2	48.3	.3	B31	34	32.8	.3	B100	103	101.8	1.1	C180	184.2	182.9	3.4
A48	50.2	49.3	.3	B32	35	33.8	.3	B101	104	102.8	1.1	C195	199.2	197.9	3.7
A49	51.2	50.3	.4	B33	36	34.8	.4	B103	106	104.8	1.1	C210	214.2	212.9	4.0
A50	52.2	51.3	.4	B34	37	35.8	.4	B105	108	106.8	1.1	C225	227.2	225.9	4.3
A51	53.2	52.3	.4	B35	38	36.8	.4	B106	109	107.8	1.1	C240	242.2	240.9	4.6
A52	54.2	53.3	.4	B36	39	37.8	.4	B108	111	109.8	1.2	C255	257.2	255.9	4.9
A53	55.2	54.3	.4	B37	40	38.8	.4	B111	114	112.8	1.2	C270	272.2	270.9	5.2
A54	56.2	55.3	.4	B38	41	39.8	.4	B112	115	113.8	1.2	C285	287.2	285.9	5.4
A55	57.2	56.3	.4	B39	42	40.8	.4	B116	119	117.8	1.3	C300	302.2	300.9	5.7
A56	58.2	57.3	.4	B40	43	41.8	.5	B120	123	121.8	1.3	C315	317.2	315.9	6.0
A57	59.2	58.3	.4	B41	44	42.8	.5	B123	126	124.8	1.3	C330	332.2	330.9	6.3
A58	60.2	59.3	.4	B42	45	43.8	.5	B124	127	125.8	1.3	C345	347.2	345.9	6.6
A59	61.2	60.3	.4	B43	46	44.8	.5	B126	129	127.8	1.4	C360	362.2	360.9	6.9
A60	62.2	61.3	.4	B44	47	45.8	.5	B128	131	129.8	1.4	C390	392.2	390.9	7.5
A61	63.2	62.3	.4	B45	48	46.8	.5	B133	136	134.8	1.5	C420	422.2	420.9	8.0
A62	64.2	63.3	.4	B46	49	47.8	.5	B136	139	137.8	1.5	D120	125.2	123.3	4.0
A63	65.2	64.3	.4	B47	50	48.8	.5	B140	143	141.8	1.6	D128	133.2	131.3	4.4
A64	66.2	65.3	.4	B48	51	49.8	.5	B144	147	145.8	1.6	D144	149.2	147.3	5.0
A65	67.2	66.3	.5	B49	52	50.8	.6	B148	151	149.8	1.6	D158	163.2	161.3	5.3
A66	68.2	67.3	.5	B50	53	51.8	.6	B150	153	151.8	1.6	D162	167.2	165.3	5.5
A67	69.2	68.3	.5	B51	54	52.8	.6	B154	157	155.8	1.7	D173	178.2	176.3	5.8
A68	70.2	69.3	.5	B52	55	53.8	.6	B158	161	159.8	1.7	D180	185.2	183.3	6.0
A69	71.2	70.3	.5	B53	56	54.8	.6	B162	165	163.8	1.7	D195	200.2	198.3	6.3
A70	72.2	71.3	.5	B54	57	55.8	.6	B173	176	174.8	1.9	D210	215.2	213.3	6.8
A71	73.2	72.3	.5	B55	58	56.8	.6	B180	183	181.8	1.9	D225	227.2	225.8	7.1
A72	74.2	73.3	.5	B56	59	57.8	.6	B190	193	191.8	2.0	D240	242.2	240.8	7.7
A73	75.2	74.3	.5	B57	60	58.8	.7	B191	194	192.2	2.0	D255	257.2	255.8	8.1
A74	76.2	75.3	.5	B58	61	59.8	.7	B195	198	196.8	2.0	D270	272.2	270.8	8.9
A75	77.2	76.3	.5	B59	62	60.8	.7	B205	208	206.9	2.2	D285	287.2	285.8	9.8
A76	78.2	77.3	.5	B60	63	61.8	.7	B210	213	211.8	2.3	D300	302.2	300.8	10.5
A77	79.2	78.3	.5	B61	64	62.8	.7	B225	226.5	225.3	2.5	D315	317.2	315.8	10.8
A78	80.2	79.3	.5	B62	65	63.8	.7	B240	241.5	240.3	2.6	D330	332.2	330.8	11.4
A79	81.2	80.3	.5	B63	66	64.8	.7	B255	256.5	255.3	2.8	D345	347.2	345.8	11.7
A80	82.2	81.3	.5	B64	67	65.8	.7	B270	271.5	270.3	2.9	D360	362.2	360.8	12.2
A81	83.2	82.3	.5	B65	68	66.8	.7	B285	286.5	285.3	3.1	D390	392.2	390.8	13.4
A82	84.2	83.3	.6	B66	69	67.8	.7	B300	301.5	300.3	3.2	D420	422.2	420.8	14.7
A83	85.2	84.3	.6	B67	70	68.8	.7	B315	316.5	315.3	3.4	D450	452.2	450.8	16.3
A84	86.2	85.3	.6	B68	71	69.8	.7	B360	361.5	360.3	4.0	D480	482.2	480.8	16.8
A85	87.2	86.3	.6	B69	72	70.8	.8	C51	55.2	53.9	1.0	D540	542.2	540.8	19.9
A86	88.2	87.3	.6	B70	73	71.8	.8	C55	59.2	57.9	1.1	D600	602.2	600.8	21.6
A87	89.2	88.3	.6	B71	74	72.8	.8	C60	64.2	62.9	1.2	D660	662.2	660.8	28.8
A88	90.2	89.3	.6	B72	75	73.8	.8	C68	72.2	70.9	1.3				
A89	91.2	90.3	.6	B73	76	74.8	.8	C72	76.2	74.9	1.4				



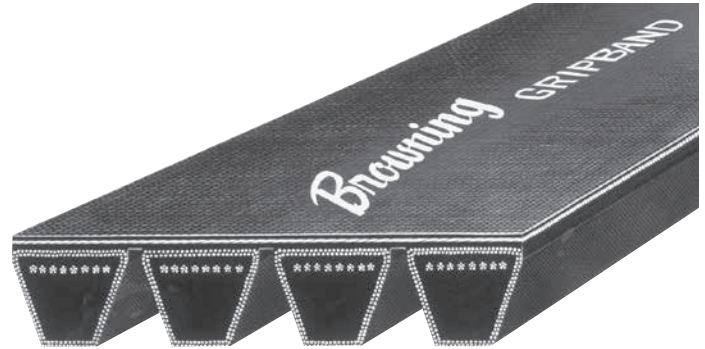
- Precision Molded Raw Edge Construction
- More Horsepower in Less Space
- Notches are Molded Extra Deep
- Oil and Heat Resistant

Table No. 1

### Browning® Gripnotch® Belts

Belt No.	Length		Wt. Lbs.	Belt No.	Length		Wt. Lbs.	Belt No.	Length		Wt. Lbs.	Belt No.	Length		Wt. Lbs.
	Outside	Pitch			Outside	Pitch			Outside	Pitch			Outside	Pitch	
AX20	22.2"	21.3"	0.2	AX82	84.2"	83.3"	0.5	BX62	65.0"	63.8"	0.7	BX191	194.0"	192.8"	2.2
AX21	23.2	22.3	0.2	AX83	85.2	84.3	0.5	BX63	66.0	64.8	0.7	BX195	198.0	196.8	2.3
AX22	24.2	23.3	0.2	AX84	86.2	85.3	0.5	BX64	67.0	65.8	0.7	BX210	213.0	211.8	2.5
AX23	25.2	24.3	0.2	AX85	87.2	86.3	0.6	BX65	68.0	66.8	0.8	BX225	228.0	226.8	2.7
AX24	26.2	25.3	0.2	AX86	88.2	87.3	0.6	BX66	69.0	67.8	0.8	BX240	241.5	240.3	2.8
AX25	27.2	26.3	0.2	AX87	89.2	88.3	0.6	BX67	70.0	68.8	0.8	BX255	256.5	255.3	3.0
AX26	28.2	27.3	0.2	AX88	90.2	89.3	0.6	BX68	71.0	69.8	0.8	BX270	271.5	270.3	3.2
AX27	29.2	28.3	0.2	AX89	91.2	90.3	0.6	BX70	73.0	71.8	0.8	BX300	301.5	300.3	3.6
AX28	30.2	29.3	0.2	AX90	92.2	91.3	0.6	BX71	74.0	72.8	0.8	CX51	55.2	53.9"	1.0
AX29	31.2	30.3	0.2	AX91	93.2	92.3	0.6	BX72	75.0	73.8	0.8	CX55	59.2	57.9	1.1
AX30	32.2	31.3	0.2	AX92	94.2	93.3	0.6	BX73	76.0	74.8	0.8	CX60	64.2	62.9	1.2
AX31	33.2	32.3	0.2	AX93	95.2	94.3	0.6	BX74	77.0	75.8	0.8	CX68	72.2	70.9	1.4
AX32	34.2	33.3	0.2	AX94	96.2	95.3	0.6	BX75	78.0	76.8	0.9	CX72	76.2	74.9	1.4
AX33	35.2	34.3	0.2	AX95	97.2	96.3	0.6	BX76	79.0	77.8	0.9	CX75	79.2	77.9	1.5
AX34	36.2	35.3	0.2	AX96	98.2	97.3	0.7	BX77	80.0	78.8	0.9	CX78	82.2	80.9	1.6
AX35	37.2	36.3	0.2	AX97	99.2	98.3	0.7	BX78	81.0	79.8	0.9	CX81	85.2	83.9	1.6
AX36	38.2	37.3	0.3	AX98	100.2	99.3	0.7	BX79	82.0	80.8	0.9	CX85	89.2	87.9	1.7
AX37	39.2	38.3	0.3	AX100	101.2	100.3	0.7	BX80	83.0	81.8	0.9	CX90	94.2	92.9	1.8
AX38	40.2	39.3	0.3	AX105	107.2	106.3	0.7	BX81	84.0	82.8	0.9	CX96	100.2	98.9	1.9
AX39	41.2	40.3	0.3	AX110	112.2	111.3	0.8	BX82	85.0	83.8	0.9	CX100	104.2	102.2	2.0
AX40	42.2	41.3	0.3	AX112	114.2	113.3	0.8	BX83	86.0	84.8	1.0	CX101	105.2	103.9	2.0
AX41	43.2	42.3	0.3	AX120	122.2	121.3	0.8	BX84	87.0	85.8	1.0	CX105	109.2	107.9	2.0
AX42	44.2	43.3	0.3	AX128	130.2	129.3	0.9	BX85	88.0	86.8	1.0	CX109	113.2	111.9	2.1
AX43	45.2	44.3	0.3	AX136	138.2	137.3	0.9	BX86	89.0	87.8	1.0	CX111	115.2	113.9	2.2
AX44	46.2	45.3	0.3	AX144	146.2	145.3	1.0	BX87	90.0	88.8	1.0	CX112	116.2	114.9	2.2
AX45	47.2	46.3	0.3	AX158	160.2	159.3	1.0	BX88	91.0	89.8	1.0	CX115	119.2	117.9	2.3
AX46	48.2	47.3	0.3	AX173	175.2	174.3	1.1	BX89	92.0	90.8	1.0	CX120	124.2	122.9	2.4
AX47	49.2	48.3	0.3	AX180	182.2	181.3	1.2	BX90	93.0	91.8	1.1	CX128	132.2	130.9	2.6
AX48	50.2	49.3	0.3	BX28	31.0	29.8	0.4	BX91	94.0	92.8	1.1	CX136	140.2	138.9	2.7
AX49	51.2	50.3	0.4	BX29	32.0	30.8	0.4	BX92	95.0	93.8	1.1	CX144	148.2	146.9	2.9
AX50	52.2	51.3	0.4	BX30	33.0	31.8	0.4	BX93	96.0	94.8	1.1	CX148	152.2	150.9	3.0
AX51	53.2	52.3	0.4	BX31	34.0	32.8	0.4	BX94	97.0	95.8	1.1	CX150	154.2	152.9	3.0
AX52	54.2	53.3	0.4	BX32	35.0	33.8	0.4	BX95	98.0	96.8	1.1	CX158	162.2	160.9	3.0
AX53	55.2	54.3	0.4	BX33	36.0	34.8	0.4	BX96	99.0	97.8	1.1	CX162	166.2	164.9	3.1
AX54	56.2	55.3	0.4	BX34	37.0	35.8	0.4	BX97	100.0	98.8	1.1	CX173	177.2	175.9	3.1
AX55	57.2	56.3	0.4	BX35	38.0	36.8	0.4	BX98	101.0	99.8	1.1	CX180	184.2	182.9	3.2
AX56	58.2	57.3	0.4	BX36	39.0	37.8	0.4	BX99	102.0	100.8	1.2	CX195	199.2	197.9	3.5
AX57	59.2	58.3	0.4	BX37	40.0	38.8	0.4	BX100	103.0	101.8	1.2	CX210	214.2	212.9	4.0
AX58	60.2	59.3	0.4	BX38	41.0	39.8	0.4	BX103	106.0	104.8	1.2	CX225	229.2	227.9	4.2
AX59	61.2	60.3	0.4	BX39	42.0	40.8	0.5	BX105	108.0	106.8	1.2	CX238	242.2	240.9	4.3
AX60	62.2	61.3	0.4	BX40	43.0	41.8	0.5	BX106	109.0	107.8	1.2	CX255	259.2	257.9	4.6
AX61	63.2	62.3	0.4	BX41	44.0	42.8	0.5	BX108	111.0	109.8	1.3	CX268	272.2	270.9	5.0
AX62	64.2	63.3	0.4	BX42	45.0	43.8	0.5	BX112	115.0	113.8	1.3	CX300	304.2	302.9	5.4
AX63	65.2	64.3	0.4	BX43	46.0	44.8	0.5	BX113	116.0	114.8	1.3	CX330	334.2	332.9	5.9
AX64	66.2	65.3	0.4	BX44	47.0	45.8	0.5	BX115	118.0	116.8	1.4	CX360	364.2	362.9	6.3
AX65	67.2	66.3	0.4	BX45	48.0	46.8	0.5	BX116	119.0	117.8	1.4	DX120	125.2	123.3	4.3
AX66	68.2	67.3	0.5	BX46	49.0	47.8	0.5	BX120	123.0	121.8	1.4	DX128	133.2	131.3	4.4
AX67	69.2	68.3	0.5	BX47	50.0	48.8	0.5	BX123	126.0	124.8	1.4	DX144	149.2	147.3	5.0
AX68	70.2	69.3	0.5	BX48	51.0	49.8	0.6	BX124	127.0	125.8	1.4	DX158	163.2	161.3	5.4
AX69	71.2	70.3	0.5	BX49	52.0	50.8	0.6	BX126	129.0	127.8	1.4	DX162	167.2	165.3	5.6
AX70	72.2	71.3	0.5	BX50	53.0	51.8	0.6	BX128	131.0	129.8	1.5	DX173	178.2	176.3	5.9
AX71	73.2	72.3	0.5	BX51	54.0	52.8	0.6	BX133	136.0	134.8	1.5	DX180	185.2	183.2	6.2
AX72	74.2	73.3	0.5	BX52	55.0	53.8	0.6	BX136	139.0	137.8	1.6	DX195	200.2	198.3	6.4
AX73	75.2	74.3	0.5	BX53	56.0	54.8	0.6	BX140	143.0	141.8	1.6	DX210	215.2	213.8	7.3
AX74	76.2	75.3	0.5	BX54	57.0	55.8	0.6	BX144	147.0	145.8	1.7	DX225	227.7	225.8	7.6
AX75	77.2	76.3	0.5	BX55	58.0	56.8	0.6	BX148	151.0	149.8	1.7	DX240	242.7	240.8	8.4
AX76	78.2	77.3	0.5	BX56	59.0	57.8	0.6	BX150	153.0	151.8	1.8	DX255	257.7	225.8	8.6
AX77	79.2	78.3	0.5	BX57	60.0	58.8	0.6	BX154	157.0	155.8	1.8	DX270	272.7	270.8	9.5
AX78	80.2	79.3	0.5	BX58	61.0	59.8	0.6	BX158	161.0	159.8	1.8	DX300	302.7	300.8	10.0
AX79	81.2	80.3	0.5	BX59	62.0	60.8	0.7	BX162	165.0	163.8	1.9	DX330	332.7	330.8	11.5
AX80	82.2	81.3	0.5	BX60	63.0	61.8	0.7	BX173	176.0	174.8	2.0	DX360	362.7	360.8	12.3
AX81	83.2	82.3	0.5	BX61	64.0	62.8	0.7	BX180	183.0	181.8	2.1				

### Multiple V- Belts in Unit Construction



- Oil and Heat Resistant
- Ideal for Pulsating Loads and Long Centers

Table No. 1

Stock Sizes

Part No.	Pitch Length	Wt Lbs.	Part No.	Pitch Length	Wt Lbs.	Part No.	Pitch Length	Wt Lbs.	Part No.	Pitch Length	Wt Lbs.	Part No.	Pitch Length	Wt Lbs.
3GBBX51	52.8"	1.8	3GBBX77	78.8	3.5	2GBBX108	109.8	3.3	2GBB210	211.8	6.2	2GBC158	160.9	8.2
3GBBX53	54.8	1.8	2GBBX78	79.8	2.4	3GBBX108	109.8	5.0	3GBB210	211.8	9.3	3GBC158	160.9	12.3
2GBBX55	56.8	1.8	3GBBX78	79.8	3.6	4GBBX108	109.8	6.6	4GBB210	211.8	12.4	4GBC158	160.9	16.4
2GBBX56	57.8	1.8	4GBBX78	79.8	4.8	2GBBX112	113.8	3.4	2GBB240	240.3	7.0	2GBC162	164.9	8.4
3GBBX56	57.8	2.7	3GBBX79	80.8	3.6	3GBBX112	113.8	5.1	3GBB240	240.3	10.5	3GBC162	164.9	12.6
4GBBX56	57.8	3.6	2GBBX80	81.8	2.4	4GBBX112	113.8	6.8	4GBB240	240.3	14.0	4GBC162	164.9	16.8
2GBBX60	61.8	1.8	3GBBX80	81.8	3.6	3GBBX133	134.8	8.1	2GBCX75	77.9	4.0	2GBC173	175.9	9.0
3GBBX60	61.8	2.7	4GBBX80	81.8	4.8	2GBB120	121.8	3.6	3GBCX75	77.9	6.0	3GBC173	175.9	13.5
4GBBX60	61.8	3.6	2GBBX81	82.8	2.5	3GBB120	121.8	5.4	4GBCX75	77.9	8.0	4GBC173	175.9	18.0
2GBBX62	63.8	1.8	3GBBX81	82.8	3.8	4GBB120	121.8	7.2	2GBCX81	83.9	4.2	2GBC180	182.9	9.4
3GBBX62	63.8	2.7	4GBBX81	82.8	5.0	2GBB124	125.8	3.8	3GBCX81	83.9	6.3	3GBC180	182.9	14.1
4GBBX62	63.8	3.6	3GBBX82	83.8	3.8	3GBB124	125.8	5.7	4GBCX81	83.9	8.4	4GBC180	182.9	18.8
2GBBX63	64.8	2.0	2GBBX83	84.8	2.6	4GBB124	125.8	7.6	2GBCX85	87.9	4.4	2GBC195	197.9	10.2
3GBBX63	64.8	3.0	3GBBX83	84.8	3.9	2GBB128	129.8	3.9	3GBCX85	87.9	6.6	3GBC195	197.9	15.3
4GBBX63	64.8	4.0	4GBBX83	84.8	5.2	3GBB128	129.8	5.9	4GBCX85	87.9	8.8	4GBC195	197.9	20.4
2GBBX64	65.8	2.0	2GBBX85	86.8	2.7	4GBB128	129.8	7.8	2GBCX90	92.9	4.8	2GBC210	212.9	11.0
3GBBX64	65.8	3.0	3GBBX85	86.8	4.1	2GBB136	137.8	4.0	3GBCX90	92.9	7.2	3GBC210	212.9	16.5
4GBBX64	65.8	4.0	4GBBX85	86.8	5.4	3GBB136	137.8	6.0	4GBCX90	92.9	9.6	4GBC210	212.9	22.0
2GBBX65	66.8	2.0	2GBBX90	91.8	2.8	4GBB136	137.8	8.0	2GBCX96	98.9	5.0	2GBC225	225.9	11.8
3GBBX65	66.8	3.0	3GBBX90	91.8	4.2	2GBB144	145.8	4.4	3GBCX96	98.9	7.5	3GBC225	225.9	17.7
4GBBX65	66.8	4.0	4GBBX90	91.8	5.6	3GBB144	145.8	6.6	4GBCX96	98.9	10.0	4GBC225	225.9	23.6
2GBBX66	67.8	2.0	2GBBX93	94.8	2.8	4GBB144	145.8	8.8	2GBCX100	102.9	5.2	2GBC240	240.9	12.6
3GBBX66	67.8	3.0	3GBBX93	94.8	4.2	2GBB158	159.8	4.8	3GBCX100	102.9	7.8	3GBC240	240.9	18.9
4GBBX66	67.8	4.0	4GBBX93	94.8	5.6	3GBB158	159.8	7.2	4GBCX100	102.9	10.4	4GBC240	240.9	25.2
2GBBX67	68.8	2.0	2GBBX95	96.8	2.9	4GBB158	159.8	9.6	2GBCX105	107.9	5.6	2GBC255	255.9	11.8
3GBBX67	68.8	3.1	3GBBX95	96.8	4.4	2GBB162	163.8	5.0	3GBCX105	107.9	8.4	3GBC255	255.9	17.7
4GBBX67	68.8	4.2	4GBBX95	96.8	5.8	3GBB162	163.8	7.5	4GBCX105	107.9	11.2	4GBC255	255.9	23.6
3GBBX69	70.8	3.1	2GBBX97	98.8	3.0	4GBB162	163.8	10.0	2GBCX112	114.9	5.8	2GBC270	270.9	14.0
2GBBX70	71.8	2.2	3GBBX97	98.8	4.5	2GBB173	174.8	5.2	3GBCX112	114.9	8.4	3GBC270	270.9	21.0
3GBBX70	71.8	3.3	4GBBX97	98.8	6.0	3GBB173	174.8	7.8	4GBCX112	114.9	11.6	4GBC270	270.9	28.0
4GBBX70	71.8	4.4	2GBBX100	101.8	3.0	4GBB173	174.8	10.4	2GBC120	122.9	6.2	2GBC300	300.9	15.6
2GBBX71	72.8	2.2	3GBBX100	101.8	4.5	2GBB180	181.8	5.4	3GBC120	122.9	9.3	3GBC300	300.9	23.4
3GBBX71	72.8	3.3	4GBBX100	101.8	6.0	3GBB180	181.8	8.1	4GBC120	122.9	12.4	4GBC300	300.9	31.2
4GBBX71	72.8	4.4	2GBBX103	104.8	3.1	4GBB180	181.8	10.8	2GBC128	130.9	6.8			
2GBBX75	76.8	2.3	3GBBX103	104.8	4.7	2GBB195	196.8	5.8	3GBC128	130.9	9.6			
3GBBX75	76.8	3.5	4GBBX103	104.8	6.2	3GBB195	196.8	8.7	4GBC128	130.9	12.8			
4GBBX75	76.8	4.6	2GBBX105	106.8	3.2	4GBB195	196.8	11.6	2GBC144	146.9	7.6			
			3GBBX105	106.8	4.8				3GBC144	146.9	11.4			
			4GBBX105	106.8	6.4				4GBC144	146.9	15.2			

Gripbands with more ribs are available on Special Order or combinations of Stock Gripbands may be ordered in matched sets for drives with more grooves; for example, two matched three rib Gripbands may be used on a six groove drive.

Horsepower Ratings for "X" Gripbands are the same as appropriate number of Gripnotch Belts; others same as Super Gripbelts.

Part No. 2GBBX56 means -

- 2 = Two Ribs
- GB = Gripband
- B = Cross Section
- X = Notched Construction
- 56 = Length Designation

For  
Multiple Shaft  
Drives with  
Shaft Operating  
in the Same  
or Opposite  
Directions

Single and  
Multiple Ply  
Construction

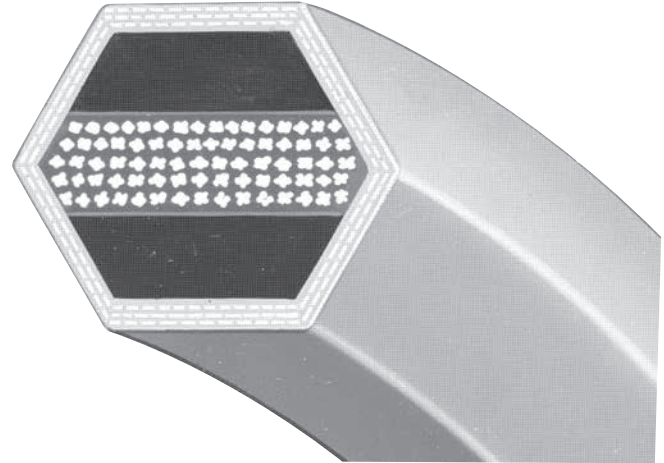


Table No. 1

Browning® Double "V" Gripbelt®

Belt No.	Length		Wt. Lbs.	Belt No.	Length		Wt. Lbs.	Belt No.	Length		Wt. Lbs.	Belt No.	Length		Wt. Lbs.
	Outside	Pitch			Outside	Pitch			Outside	Pitch			Outside	Pitch	
AA51	54.5"	53.1"	.5	BB83	87.7"	85.9"	1.2	BB158	162.7"	160.9"	2.5	CC136	142.2"	140.2"	3.3
AA55	58.5	57.1	.5	BB85	89.7	87.9	1.2	BB168	172.7	170.9	2.5	CC144	150.2	148.2	3.5
AA60	63.5	62.1	.6	BB90	94.7	92.9	1.3	BB173	177.7	175.9	2.6	CC158	164.2	162.2	3.9
AA68	71.5	70.1	.6	BB93	97.7	95.9	1.3	BB180	184.7	182.9	2.8	CC162	168.2	166.2	3.9
AA75	78.5	77.1	.7	BB94	98.7	96.9	1.4	BB182	186.7	184.9	2.8	CC173	179.2	177.2	4.2
				BB97	101.7	99.9	1.4								
AA80	83.5	82.1	.8					BB190	194.7	192.9	2.9	CC180	186.2	184.2	4.4
AA85	88.5	87.1	.8	BB103	107.7	105.9	1.5	BB195	199.7	197.9	2.9	CC195	201.2	199.2	4.8
AA90	93.5	92.1	.9	BB105	109.7	107.9	1.5	BB210	214.7	212.9	3.1	CC210	216.2	214.2	5.3
AA96	99.5	98.1	1.0	BB107	111.7	109.9	1.6	BB226	229.2	227.4	3.4				
AA105	108.5	107.1	1.0	BB108	112.7	109.9	1.6								
								BB228	231.2	229.4	3.4				
AA112	115.5	114.1	1.1	BB111	115.7	113.9	1.7	BB240	243.2	241.4	3.6	CC300	304.2	302.2	7.6
AA120	123.5	122.1	1.2	BB112	116.7	114.9	1.5	BB270	273.2	271.4	4.0	CC330	334.2	332.2	7.5
AA128	131.5	130.1	1.2					BB273	276.2	274.4	4.1	CC360	364.2	362.2	8.1
				BB116	120.7	118.9	1.8	BB300	303.2	301.4	4.6	▲CC360DC	364.2	362.2	8.1
BB45	49.7	47.9	.6	BB117	121.7	119.9	1.8								
BB54	58.7	56.9	.8	BB118	122.7	120.9	1.8	CC75	81.2	79.2	1.8	▲CC480DC	484.2	480.9	14.3
				BB120	124.7	122.9	1.8	CC85	91.2	89.2	1.9	▲CC540DC	544.2	540.9	17.5
BB55	59.7	57.9	.8	BB123	127.7	125.9	1.9	CC90	96.2	94.2	2.0				
BB60	64.7	62.9	.9	BB124	128.7	126.9	1.9	CC96	102.2	100.2	2.1				
BB68	72.7	70.9	.9									▲CC700DC	704.2	700.9	21.5
BB74	78.7	76.9	1.0	BB128	132.7	130.9	1.9	CC105	111.2	109.2	2.3	▲CC720DC	724.2	720.9	23.0
BB75	79.7	77.9	1.0	BB129	133.7	131.9	2.0	CC112	118.2	116.2	2.6				
BB81	85.7	83.9	1.1	BB136	140.7	138.9	2.1	CC120	126.2	124.2	2.9				
				BB144	148.7	146.9	2.2	CC128	134.2	132.2	3.1				
				BB155	159.7	157.9	2.3								

▲Deep-Cog Construction.

- Wrapped construction provides smooth, quiet operation.
- Formulated for maximum flexibility for use with smaller diameter sheaves.
- More tolerant of slip and misalignment than raw edge belts.
- Oil and heat resistant — static conducting.

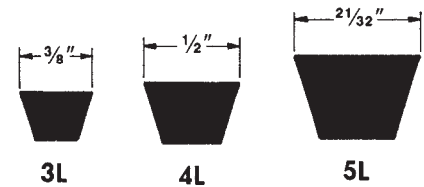
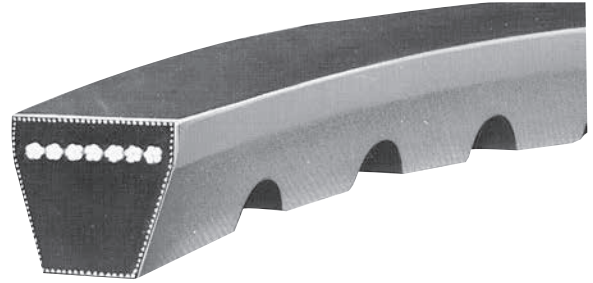
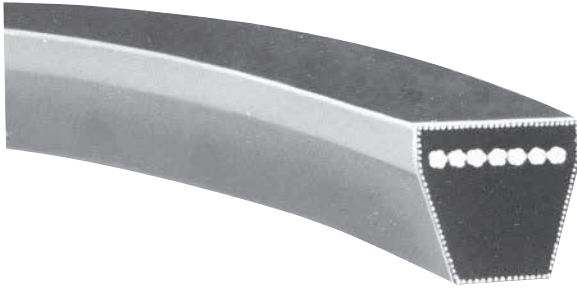


Table No. 1

Stock Sizes

Belt No.	Length		Wt. Lbs.	Belt No.	Length		Wt. Lbs.	Belt No.	Length		Wt. Lbs.	Belt No.	Length		Wt. Lbs.
	Outside	Pitch			Outside	Pitch			Outside	Pitch			Outside	Pitch	
				4L220	22"	21.0"	.12	4L780	78"	77.0"	.44	5L570	57"	55.8"	.50
				4L225	22 1/2"	21.5	.13	4L790	79	78.0	.44	5L580	58	56.8	.50
3L120	12"	11.3"	.04	4L230	23	22.0	.13	4L800	80	79.0	.44	5L590	59	57.8	.50
3L130	13	12.3	.04	4L240	24	23.0	.13	4L810	81	80.0	.44	5L600	60	58.8	.56
3L140	14	13.3	.05					4L820	82	81.0	.44	5L610	61	59.8	.56
3L150	15	14.3	.05	4L250	25	24.0	.13	4L830	83	82.0	.44	5L620	62	60.8	.56
3L160	16	15.3	.05	4L260	26	25.0	.13	4L840	84	83.0	.44	5L630	63	61.8	.56
3L170	17	16.3	.05	4L270	27	26.0	.13	4L850	85	84.0	.50	5L640	64	62.8	.63
3L180	18	17.3	.06	4L280	28	27.0	.13	4L860	86	85.0	.50	5L650	65	63.8	.63
3L190	19	18.3	.06	4L290	29	28.0	.13	4L870	87	86.0	.50	5L660	66	64.8	.63
3L200	20	19.3	.06	4L300	30	29.0	.13	4L880	88	87.0	.50	5L670	67	65.8	.63
3L210	21	20.3	.07	4L310	31	30.0	.19	4L890	89	88.0	.50	5L680	68	66.8	.63
3L220	22	21.3	.07	4L320	32	31.0	.19	4L900	90	89.0	.50	5L690	69	67.8	.63
3L230	23	22.3	.07	4L330	33	32.0	.19	4L910	91	90.0	.50	5L700	70	68.8	.69
3L240	24	23.3	.08	4L340	34	33.0	.19	4L920	92	91.0	.50	5L710	71	69.8	.69
3L250	25	24.3	.08	4L350	35	34.0	.19	4L930	93	92.0	.50	5L720	72	70.8	.69
3L260	26	25.3	.08	4L360	36	35.0	.19	4L940	94	93.0	.50	5L730	73	71.8	.69
3L270	27	26.3	.08	4L370	37	36.0	.19	4L950	95	94.0	.50	5L740	74	72.8	.69
3L280	28	27.3	.09	4L380	38	37.0	.19	4L960	96	95.0	.50	5L750	75	73.8	.69
3L290	29	28.3	.09	4L390	39	38.0	.25	4L970	97	96.0	.50	5L760	76	74.8	.69
3L300	30	29.3	.09	4L400	40	39.0	.25	4L980	98	97.0	.56	5L770	77	75.8	.69
3L310	31	30.3	.10	4L410	41	40.0	.25	4L990	99	98.0	.56	5L780	78	76.8	.75
3L320	32	31.3	.10	4L415	41 1/2"	40.5	.25	4L1000	100	99.0	.56	5L790	79	77.8	.75
3L330	33	32.3	.10	4L420	42	41.0	.25					5L800	80	78.8	.75
3L340	34	33.3	.11	4L430	43	42.0	.25					5L810	81	79.8	.75
3L350	35	34.3	.11	4L440	44	43.0	.25	5L230	23	21.8	.20	5L820	82	80.8	.75
3L360	36	35.3	.11	4L450	45	44.0	.25	5L240	24	22.8	.20	5L830	83	81.8	.75
3L370	37	36.3	.12	4L460	46	45.0	.25	5L250	25	23.8	.20	5L840	84	82.8	.75
3L380	38	37.3	.12	4L470	47	46.0	.25	5L260	26	24.8	.20	5L850	85	83.8	.81
3L390	39	38.3	.12	4L480	48	47.0	.25	5L270	27	25.8	.22	5L860	86	84.8	.81
3L400	40	39.3	.13	4L490	49	48.0	.31	5L280	28	26.8	.22	5L870	87	85.8	.81
3L410	41	40.3	.13	4L500	50	49.0	.31	5L290	29	27.8	.24	5L880	88	86.8	.81
3L420	42	41.3	.13	4L510	51	50.0	.31	5L300	30	28.8	.26	5L890	89	87.8	.81
3L430	43	42.3	.13	4L520	52	51.0	.31	5L310	31	29.8	.26	5L900	90	88.8	.81
3L440	44	43.3	.14	4L530	53	52.0	.31	5L320	32	30.8	.26	5L910	91	89.8	.88
3L450	45	44.3	.14	4L540	54	53.0	.31	5L330	33	31.8	.28	5L920	92	90.8	.88
3L460	46	45.3	.14	4L550	55	54.0	.31	5L340	34	32.8	.28	5L930	93	91.8	.88
3L470	47	46.3	.15	4L560	56	55.0	.31	5L350	35	33.8	.31	5L940	94	92.8	.88
3L480	48	47.3	.15	4L570	57	56.0	.31	5L360	36	34.8	.31	5L950	95	93.8	.88
3L490	49	48.3	.15	4L580	58	57.0	.31	5L370	37	35.8	.31	5L960	96	94.8	.88
3L500	50	49.3	.16	4L590	59	58.0	.31	5L380	38	36.8	.31	5L970	97	95.8	.88
3L510	51	50.3	.16	4L600	60	59.0	.31	5L390	39	37.8	.31	5L980	98	96.8	.94
3L520	52	51.3	.16	4L610	61	60.0	.31	5L400	40	38.8	.38	5L990	99	97.8	.94
3L530	53	52.3	.17	4L620	62	61.0	.31	5L410	41	39.8	.38	5L1000	100	98.8	.94
3L540	54	53.3	.17	4L630	63	62.0	.31	5L420	42	40.8	.38				
3L550	55	54.3	.18	4L640	64	63.0	.38	5L430	43	41.8	.38				
3L560	56	55.3	.18	4L650	65	64.0	.38	5L440	44	42.8	.38				
3L570	57	56.3	.18	4L660	66	65.0	.38	5L450	45	43.8	.38				
3L580	58	57.3	.18	4L670	67	66.0	.38	5L460	46	44.8	.44				
3L590	59	58.3	.19	4L680	68	67.0	.38	5L470	47	45.8	.44				
3L600	60	59.3	.19	4L690	69	68.0	.38	5L480	48	46.8	.44				
3L610	61	60.3	.19	4L700	70	69.0	.38	5L490	49	47.8	.50				
3L620	62	61.3	.19	4L710	71	70.0	.38	5L500	50	48.8	.50				
3L630	63	62.3	.20	4L720	72	71.0	.38	5L510	51	49.8	.50				
4L170	17	16.0	.10	4L730	73	72.0	.38	5L520	52	50.8	.50				
4L180	18	17.0	.10	4L740	74	73.0	.38	5L530	53	51.8	.50				
4L190	19	18.0	.11	4L750	75	74.0	.44	5L540	54	52.8	.50				
4L200	20	19.0	.11	4L760	76	75.0	.44	5L550	55	53.8	.50				
4L210	21	20.0	.12	4L770	77	76.0	.44	5L560	56	54.8	.50				



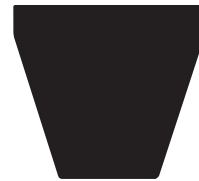
- Oil and Heat Resistant
- More HORSEPOWER in Less Space



**3V**  
3/8" x 15/16



**5V**  
5/8" x 17/32



**8V**  
1" x 29/32

Table No. 1

Specifications

PART NO.	OUTSIDE LENGTH	WT. LBS.	PART NO.	OUTSIDE LENGTH	WT. LBS.	PART NO.	OUTSIDE LENGTH	WT. LBS.
3VX250	25.0	.1	5VX590	59.0	.6	5V2120	212.0	2.4
3VX265	26.5	.1	5VX600	60.0	.7	5V2240	224.0	2.6
3VX280	28.0	.1	5VX610	61.0	.7	5V2360	236.0	2.8
3VX300	30.0	.1	5VX630	63.0	.7	5V2500	250.0	2.9
3VX315	31.5	.1	5VX650	65.0	.7	5V2650	265.0	3.2
3VX335	33.5	.1	5VX660	66.0	.8	5V2800	280.0	3.3
3VX355	35.5	.2	5VX670	67.0	.8	5V3000	300.0	3.6
3VX375	37.5	.2	5VX680	68.0	.8	5V3150	315.0	3.9
3VX400	40.0	.2	5VX690	69.0	.8	5V3350	335.0	4.0
3VX425	42.5	.2	5VX710	71.0	.8	5V3550	355.0	4.3
3VX450	45.0	.2	5VX730	73.0	.8	8V1000	100.0	3.3
3VX475	47.0	.2	5VX740	74.0	.8	8V1120	112.0	3.6
3VX500	50.0	.2	5VX750	75.0	.8	8V1180	118.0	3.8
3VX530	53.0	.2	5VX780	78.0	.8	8V1250	125.0	3.9
3VX560	56.0	.2	5VX800	80.0	.9			
3VX600	60.0	.3	5VX810	81.0	.9	8V1400	140.0	4.5
3VX630	63.0	.3	5VX830	83.0	.9	8V1500	150.0	4.8
3VX670	67.0	.3	5VX840	84.0	.9	8V1600	160.0	5.1
3VX710	71.0	.3	5VX850	85.0	.9	8V1700	170.0	5.6
3VX750	75.0	.3	5VX860	86.0	.9	8V1800	180.0	6.0
3VX800	80.0	.4	5VX880	88.0	.9	8V1900	190.0	6.3
3VX850	85.0	.4	5VX900	90.0	1.0	8V2000	200.0	6.5
3VX900	90.0	.4	5VX930	93.0	1.0	8V2120	212.0	6.9
3VX950	95.0	.4	5VX950	95.0	1.0	8V2240	224.0	7.2
3VX1000	100.0	.4	5VX960	96.0	1.0	8V2360	236.0	7.6
3VX1060	106.0	.4	5VX1000	100.0	1.1	8V2500	250.0	8.0
3VX1120	112.0	.5	5VX1030	103.0	1.1	8V2650	265.0	8.5
3VX1180	118.0	.5	5VX1060	106.0	1.2	8V2800	280.0	8.9
3VX1250	125.0	.6	5VX1080	108.0	1.2	8V3000	300.0	9.6
3VX1320	132.0	.6	5VX1120	112.0	1.3	8V3150	315.0	10.3
3VX1400	140.0	.6	5VX1150	115.0	1.3	8V3350	335.0	11.4
5VX450	45.0	.4	5VX1180	118.0	1.4	8V3550	355.0	12.4
5VX470	47.0	.5	5VX1230	123.0	1.4	8V3750	375.0	11.4
5VX490	49.0	.5	5VX1250	125.0	1.4	8V4000	400.0	13.0
5VX500	50.0	.6	5VX1320	132.0	1.5	8V4250	425.0	12.9
5VX510	51.0	.6	5VX1400	140.0	1.6	8V4500	450.0	14.4
5VX530	53.0	.6	5VX1500	150.0	1.8	8V4750	475.0	14.5
5VX540	54.0	.6	5VX1600	160.0	1.8	8V5000	500.0	15.3
5VX550	55.0	.6	5VX1700	170.0	2.0			
5VX560	56.0	.6	5VX1800	180.0	2.1			
5VX570	57.0	.6	5VX1900	190.0	2.3			
5VX580	58.0	.6	5VX2000	200.0	2.4			

Belts with "X" in Part Number are Gripnotch Belts.

### Multiple V- Belts in Unit Construction



- Oil and Heat Resistant
- Ideal for Pulsating Loads and Long Centers

Table No. 1

Stock Sizes

PART NO.	OUTSIDE LENGTH	WT. LBS.	PART NO.	OUTSIDE LENGTH	WT. LBS.	PART NO.	OUTSIDE LENGTH	WT. LBS.	PART NO.	OUTSIDE LENGTH	WT. LBS.	PART NO.	OUTSIDE LENGTH	WT. LBS.
2GB3VX450	45.0"	.6	2GB3VX750	75.0	1.0	2GB3V1320▲	132.0	1.8	2GB5VX1060	106.0	3.4	2GB5V1800	180.0	6.0
3GB3VX450	45.0	.9	3GB3VX750	75.0	1.5	3GB3V1320▲	132.0	2.7	3GB5VX1060	106.0	5.1	3GB5V1800	180.0	9.0
4GB3VX450	45.0	1.2	4GB3VX750	75.0	2.0	4GB3V1320▲	132.0	3.6	4GB5VX1060	106.0	6.8	4GB5V1800	180.0	12.0
									5GB5VX1060	106.0	8.5			
2GB3VX475	47.5	.6	2GB3VX800	80.0	1.0	2GB3V1400▲	140.0	1.8				2GB5V1900	190.0	6.4
3GB3VX475	47.5	.9	3GB3VX800	80.0	1.5	3GB3V1400▲	140.0	2.7	2GB5VX1120	112.0	3.6	3GB5V1900	190.0	9.6
4GB3VX475	47.5	1.2	4GB3VX800	80.0	2.0	4GB3V1400▲	140.0	3.6	3GB5VX1120	112.0	5.4	4GB5V1900	190.0	12.8
									4GB5VX1120	112.0	7.2			
2GB3VX500	50.0	.6	2GB3VX850	85.0	1.2	2GB5VX670	67.0	2.2				2GB5V2000	200.0	6.6
3GB3VX500	50.0	.9	3GB3VX850	85.0	1.8	3GB5VX670	67.0	3.3	2GB5V1180	118.0	3.8	3GB5V2000	200.0	9.9
4GB3VX500	50.0	1.2	4GB3VX850	85.0	2.4	4GB5VX670	67.0	4.4	3GB5V1180	118.0	5.7	4GB5V2000	200.0	13.2
									4GB5V1180	118.0	7.6			
2GB3VX530	53.0	.8	2GB3VX900	90.0	1.2	2GB5VX710	71.0	2.4				2GB5V2120	212.0	7.0
3GB3VX530	53.0	1.2	3GB3VX900	90.0	1.8	3GB5VX710	71.0	3.6	2GB5V1250	125.0	4.0	3GB5V2120	212.0	10.5
4GB3VX530	53.0	1.6	4GB3VX900	90.0	2.4	4GB5VX710	71.0	4.8	3GB5V1250	125.0	6.0	4GB5V2120	212.0	14.0
									4GB5V1250	125.0	8.0			
2GB3VX560	56.0	.8	2GB3VX950	95.0	1.2	2GB5VX750	75.0	2.6	5GB5V1250	125.0	10.0	2GB5V2240	224.0	7.6
3GB3VX560	56.0	1.2	3GB3VX950	95.0	1.8	3GB5VX750	75.0	3.9				3GB5V2240	224.0	11.4
4GB3VX560	56.0	1.6	4GB3VX950	95.0	2.4	4GB5VX750	75.0	5.2	2GB5V1320	132.0	4.0	4GB5V2240	224.0	15.2
									3GB5V1320	132.0	6.0			
2GB3VX600	60.0	.8	2GB3VX1000	100.0	1.4	2GB5VX800	80.0	2.6	4GB5V1320	132.0	8.0	4GB5V2360	236.0	16.0
3GB3VX600	60.0	1.2	3GB3VX1000	100.0	2.1	3GB5VX800	80.0	3.9						
4GB3VX600	60.0	1.6	4GB3VX1000	100.0	2.8	4GB5VX800	80.0	5.2	2GB5V1400	140.0	4.4	2GB5V2500	250.0	8.4
									3GB5V1400	140.0	6.6	3GB5V2500	250.0	12.6
2GB3VX630	63.0	.8	2GB3VX1060	106.0	1.4	2GB5VX900	90.0	3.0	4GB5V1400	140.0	8.8	4GB5V2500	250.0	16.8
3GB3VX630	63.0	1.2	3GB3VX1060	106.0	2.1	3GB5VX900	90.0	4.5						
4GB3VX630	63.0	1.6	4GB3VX1060	106.0	2.8	4GB5VX900	90.0	6.0	2GB5V1500	150.0	4.6	2GB5V2650	265.0	8.6
									3GB5V1500	150.0	6.9	3GB5V2650	265.0	12.9
2GB3VX670	67.0	.8	2GB3VX1120	112.0	1.4	2GB5VX950	95.0	3.0	4GB5V1500	150.0	9.2	4GB5V2650	265.0	17.2
3GB3VX670	67.0	1.2	3GB3VX1120	112.0	2.1	3GB5VX950	95.0	4.5	5GB5V1500	150.0	11.5			
4GB3VX670	67.0	1.6	4GB3VX1120	112.0	2.8	4GB5VX950	95.0	6.0				2GB5V2800	280.0	9.0
												3GB5V2800	280.0	13.5
2GB3VX710	71.0	1.0	2GB3V1180▲	118.0	1.6	2GB5VX1000	100.0	3.2	3GB5V1600	160.0	7.5	4GB5V2800	280.0	18.0
3GB3VX710	71.0	1.5	3GB3V1180▲	118.0	2.4	3GB5VX1000	100.0	4.8	4GB5V1600	160.0	10.0			
4GB3VX710	71.0	2.0	4GB3V1180▲	118.0	3.2	4GB5VX1000	100.0	6.4				2GB5V3000	300.0	10.0
						5GB5VX1000	100.0	8.0	2GB5V1700	170.0	5.6	3GB5V3000	300.0	15.0
			2GB3V1250▲	125.0	1.6				3GB5V1700	170.0	8.4	4GB5V3000	300.0	20.0
			3GB3V1250▲	125.0	2.4				4GB5V1700	170.0	11.2			
			4GB3V1250▲	125.0	3.2				5GB5V1700	170.0	14.0			

Gripbands with more ribs are available on Special Order or combinations of Stock Gripbands may be ordered in matched sets for drives with more grooves; for example, two matched three rib Gripbands may be used on a six groove drive.

Horsepower Ratings for "X" Gripbands are the same as appropriate number of Gripnotch Belts; others same as Super Gripbelts except "3V" Gripbands marked (▲) are rated at 80% of "3VX" Gripnotch ratings

Part No. 2GB3VX450 means

2 = Two Ribs

GB = Gripband

3V = Cross Section

X = Notched Construction

450 = 45" Outside Length