



Borsa Italiana

London Stock Exchange Group

New BTS client Installation Guide

(CDS and Production environment)



Bit Market Services

London Stock Exchange Group

Table of Contents

1	Introduction	3
1.1	Purpose	3
2	BTS - installation and checks	3
2.1	Hardware requirements	3
2.2	Client Installation & checks	3
2.3	Installation in PRODUCTION environment (& SDC)	6
2.4	Installation in CDS environment.....	7
3	New Functionalities and Windows Management	7
3.1	Desktop Saving Management	7
3.2	Drag & Drop	7
3.3	Docked Price Info	8
3.4	Order Entry	8
3.5	Contract selection.....	8
3.6	New Flexco creation (for Derivatives Users only)	8
3.7	New column labels and default	8
3.8	Filters and Sorting	8
3.9	Settings	8
3.10	New Strategy Tool	9
4	Appendix.....	9

1 Introduction

The Bit Trading Station (BTS) is a multi market client application that works as trading and information front-end for equities and derivatives markets.

Customer satisfaction surveys have led us to review the graphical application lay out and functional interaction of the GUI application in order to add value in terms of usability and commercial appeal.

The new BTS GUI application lay out has been reviewed and optimised to offer our clients not only new functionalities but also a more intuitive and user friendly application. Some windows have completely rebuilt. See:

- Windows colours and layout
- Filters management
- Columns settings and label renaming
- Price Info docked window
- Dictionary layout and management
- Flexco creation window for derivatives market, among others.

1.1 Purpose

This document aims to provide customers with a quick guide line for the correct installation, configuration of the new client and the list of checks to perform before starting using the new client (the following instructions are valid for the client version 7.0.0.499 and higher)

A brief description of the new functionalities is provided at chapter 3 and a more detailed one, including screenshot, is provided in the *BTS Reference Guide* published on the BIT website.

2 BTS - installation and checks

The Bit Trading Station (BTS) is a multimarket access client application developed on Java platform and can be downloaded from Internet and installed directly on a member's PC.

2.1 Hardware requirements

There are some minimum HW requirements that need to be met to guarantee the correct functioning of a BTS:

- CPU: Pentium Dual Core 2GHz
RAM: 1GB
HD: 100GB
- JVM 1.5.06 or higher version
- Network Adapter: 100 Mbit/s or 1 Gbit/s

2.2 Client Installation & checks

BTS client installation files are available for downloading in BIT website :

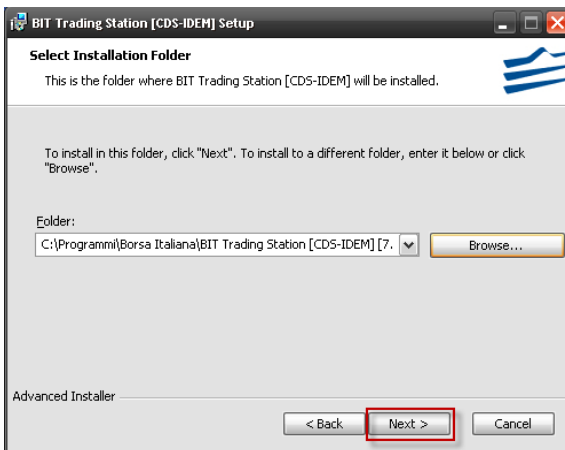
<http://www.borsaitaliana.it/borsaitaliana/intermediari/gestione-mercati/bts-bittradingstation/bts.htm>

Although BTS GUI guarantees the complete backward compatibility, it's highly recommended to download always the latest version available in our website.

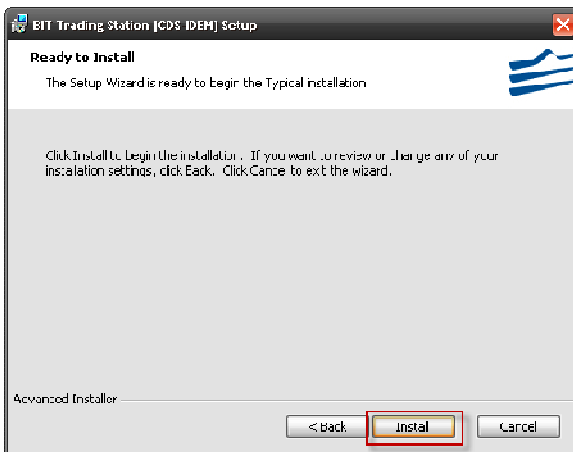
After downloading the file, please follow the installation instructions:



Click on 'Next'



Click on 'Next' to continue installation in the predefined destination folder or 'Browse' if the installation folder needs to be changed and then 'Next'



Once the installation is completed, the application is ready to be used and the customer can access using his credentials. However, there are some checks that can be carried out in order to make sure the configuration is correct.

Launch the application and click on Help > About



Make sure you are using the correct Look and Feel properties "*MetalLookAndFeelFactory*"



If not, go to the installation folder i.e: `\Programmi\Borsa Italiana\BIT Trading Station [PROD-IDEM] [7.0.0.499]\etc\client\`

Open file `StartProperties.config` and make sure the following string is not commented:

OK:

`look.feel=it.gateti.gatemarket.gui.util.laf.MetalLookAndFeelFactory`

KO:

`# look.feel=it.gateti.gatemarket.gui.util.laf.MetalLookAndFeelFactory`

Note: If the user does not know the installation destination folder, go to **Start > All Programs > Borsa Italiana > BIT Trading Station [PROD-IDEM] [7.0.0.499]**. Right click on **Bit Trading Station > Properties**.



In order to access the Bit Trading Station, customers need a user id, a password and a Member Code. Credentials are provided by Borsa Italiana Clients-Services team upon request.

In case of problems during the login, please close the BTS GUI interface and follow the steps described in chapter 2.3 and 2.4 below.

2.3 Installation in PRODUCTION environment (& SDC)

The following instructions are to be followed for the installation of BTS in the production environment (PDC) and SDC :

Verify server naming and the ip address as follows :

- go to the BTS client installation directory. i.e: \Programmi\Borsa Italiana\BIT Trading Station [PROD-IDEM] [7.0.0.499]\etc\server\
- Open the configuration file *GKApi_J_Version.cfg* and check the SERVER LIST. To connect to the PROD environment the server list should be configured as follows:

```
SERVER_LIST=TPAPPSVR01_PROD;TPAPPSVR02_PROD
```

Or:

```
SERVER_LIST= TPAPPSVR01_PROD;TPAPPSVR02_PROD;  
SS_TPAPPSVR01_PROD;SS_TPAPPSVR02_PROD (if the user has the Strategy tool)
```

The correct ip addresses should be the following:

```
TPAPPSVR01_PROD and SS_TPAPPSVR01_PROD = 194.169.15.134
```

```
TPAPPSVR02_PROD and SS_TPAPPSVR02_PROD = 194.169.15.135
```

and Port: 34900 and 34902 (for the IDEM strategies tool)

- Verify that servers are correctly configured in the file \Programmi\Borsa Italiana\BIT Trading Station [PROD-IDEM]\[7.0.0.499]\etc\client\ContextManagerSetup.config.

The correct values should be the following (be aware of the comment characters #):

```
Server1= TPAPPSVR01_PROD
```

```
Server2= TPAPPSVR02_PROD
```

If connection to the Strategy server is needed, add server3 and server4

```
Server3= SS_TPAPPSVR01_PROD,2,200
```

Server4= SS_TPAPPSVR02_PROD,2,200

In case of natted addresses, verify that in the `etc/server/GKApi_J_Version.cfg` file the right IP addresses have been specified.

2.4 Installation in CDS environment

The following instructions are to be followed for the installation of BTS in the CDS environment:

- Verify server naming and the ip address as follows :

go to the BTS client installation directory. i.e: \Programmi\Borsa Italiana\BIT Trading Station [CDS-IDEM] [7.0.0.499]\etc\server\

Open the configuration file `GKApi_J_Version.cfg` and check the `SERVER LIST`. To connect to the CDS environment the server list should be configured as follows:

`SERVER_LIST=TPAPPSVR01_CDS`

Or:

`SERVER_LIST= TPAPPSVR01_CDS;SS_TPAPPSVR01_CDS` (if the user has the Strategy tool)

The correct Ip address is:

`TPAPPSVR01_CDS` and `SS_TPAPPSVR01_CDS` = 194.169.15.168

Port: 34900 and 34902 (for the IDEM strategies tool)

- Verify that the server is configured correctly in the file i.e: \Programmi\Borsa Italiana\BIT Trading Station [CDS-IDEM] [7.0.0.499]\etc\client\ContextManagerSetup.config.

The correct names are (be aware of the comment characters #):

`Server1= TPAPPSVR01_CDS`

If connection to the Strategy server is needed, add `server2`

`Server2= SS_TPAPPSVR01_CDS,2,200`

In case of natted address, verify that in the `etc/server/GKApi_J_Version.cfg` file the right IP address has been specified.

3 New Functionalities and Windows Management

3.1 Desktop Saving Management

A new logic of desktop saving management has been implemented in order to make easier to customers the client layout configuration. Windows layout, general settings and profile will be saved only upon request. It will be also possible to save anytime single or multiple desks by using the functionalities 'Save All Desk Layouts' and 'Save Current Desk Layout'. Moreover, if one or more desks are modified, it will be possible to reload the previously saved layout by selecting the functionality "Reload Desk".

Besides, customers will be able to move windows from one virtual desk to another by simply selecting the desk from every window's tool bar.

3.2 Drag & Drop

In order to facilitate the customization of windows, functionality Drag and Drop has been implemented to:

- move columns within the window

- drag instruments from the Dictionary to other windows (see Price Info, order entry, Flexco creation, among others)
- move one or more instruments from one Price Info watcher to another watcher
- drag instruments from the Ticker and the Trading Manager to the Watcher within the Price Info

3.3 Docked Price Info

Price Info window has been configured as a container of windows displaying real time market data such as:

- Ticker
- Order and Price Depth
- Watcher
- Embedded Order Entry

However, customers will be able to configure it by closing, opening or disposing windows within the frame without overlapping.

3.4 Order Entry

A new order entry window has been added to the existing ones:

- Buy Order (F5)
- Sell Order (F9)
- Both sides Order Entry (F7)
- Cross Order (F6)
- New: Stop Order

3.5 Contract selection

The current Dictionary has been optimized with a much easier navigation and it's available from all the windows where it currently is. Moreover, it will be possible to open the dictionary both as a separate window, or as it is now, linked to a single window or action (see order entry).

3.6 New Flexco creation (for Derivatives Users only)

With the purpose of making the Flexco instrument creation easier and intuitive, a new logic has been implemented in order to meet the trader intention in case market changes the structure of the Strategy.

For the Trader the operation will be seamless: the only instructions he will give to the BTS are what positions (buy what and sell what) shall be built on the individual legs and if money shall be paid or received for building that positions.

3.7 New column labels and default

Columns naming and default visible columns have been reviewed in all windows in order to uniform them all.

3.8 Filters and Sorting

A new quick filter has been added to the Ticker and the Trading Manager window to allow customers to filter by instrument, ISIN, price, quantity, etc. It will be possible to apply multiple filters.

Besides, customers will be able to sort columns by clicking on Sort Asc/Sort Desc option. Sort can be applied on multiple columns.

3.9 Settings

New columns and windows settings have been implemented in order to make the client more configurable.

The following actions can be carried out by right clicking on columns header:

- Hide Columns

- Customize (to recover previously hidden columns)
- Autofit Column: resizes the column length on the basis of the contained data
- Autofit All Columns: resizes all the columns length on the basis of the contained data

3.10 New Strategy Tool

An additional module has been introduced to meet users requirements on algo trading that will permit customers to apply different kind of strategies such as:

- Automatic Order
- OCO (Order cancel order)
- Automatic Interbank
- Automatic Cross
- POV (Percentage of volume)

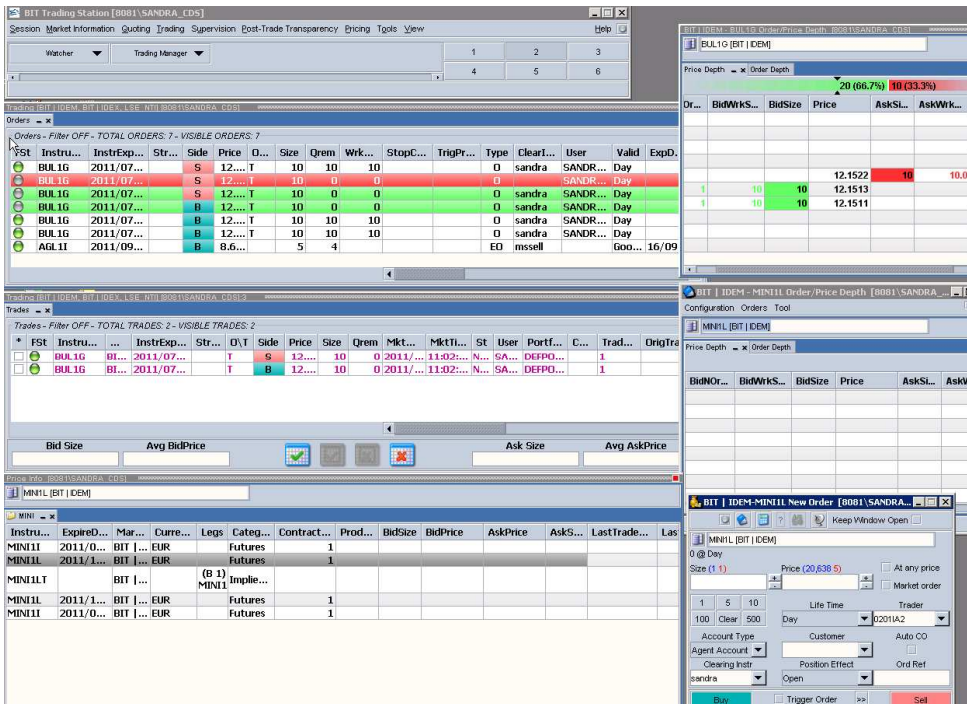
This will be associated to the user's profile only upon request as an advanced tool.

4 Appendix

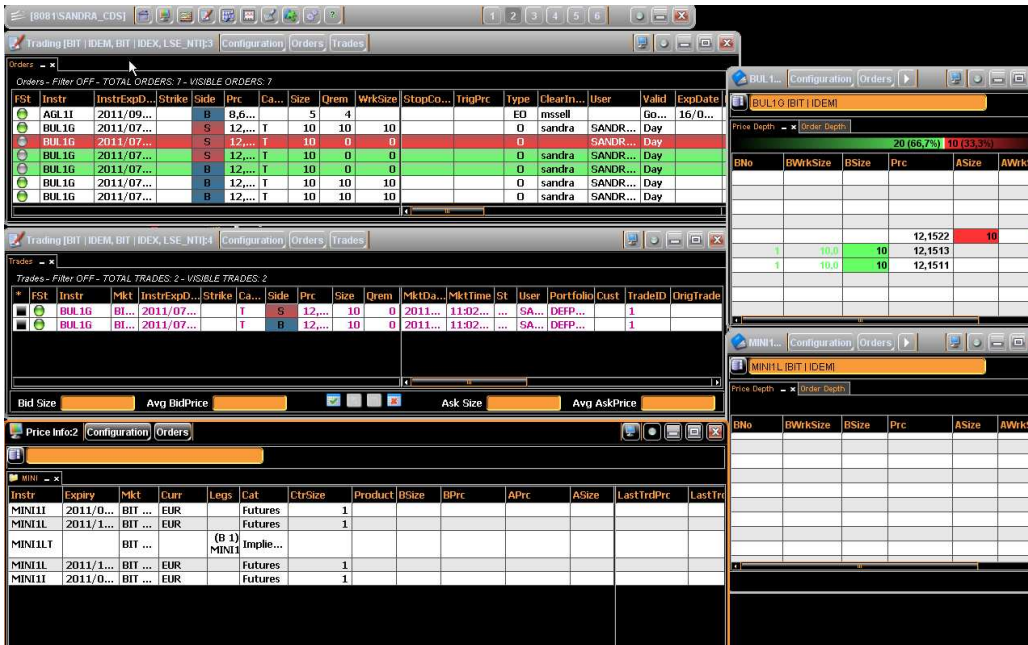
For Derivatives markets BTS users only

In order to make the GUI client look more attractive and intuitive to customers, the restyling of the client has been done at several levels, from windows decoration, functional reviewing, to windows layout in the user screen. For this reason and in order not to compromise the correct behavior of the new GUI configuration lay out with old saved settings, users are recommended to carry out some steps.

A previously saved desktop like this:

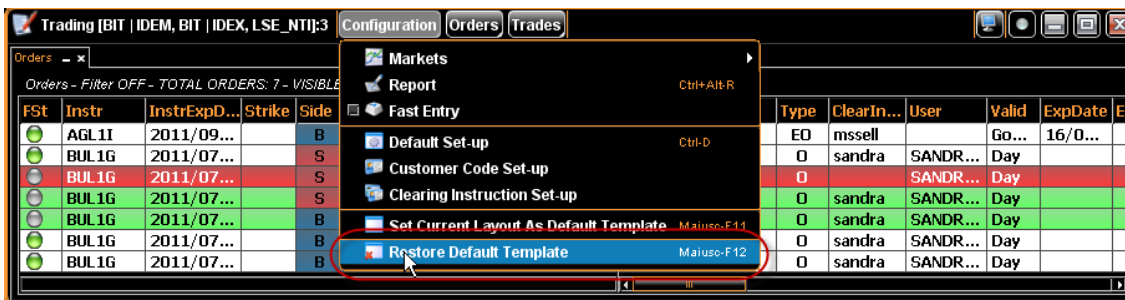


Will look like this when connecting for the first time with the new BTS client:



In order to visualise correctly the new client windows layout, it's necessary to restore the default configurations.

Open the Configuration menu of one of the saved windows and select *Restore Default Template*.



Repeat this operation for every saved window. Close all windows, save the environment and start the configuration of the desks from the beginning.