

ENCLAVE

BUICK.COM

Discover more about Buick and join the dialogue on Facebook.
facebook.com/buick

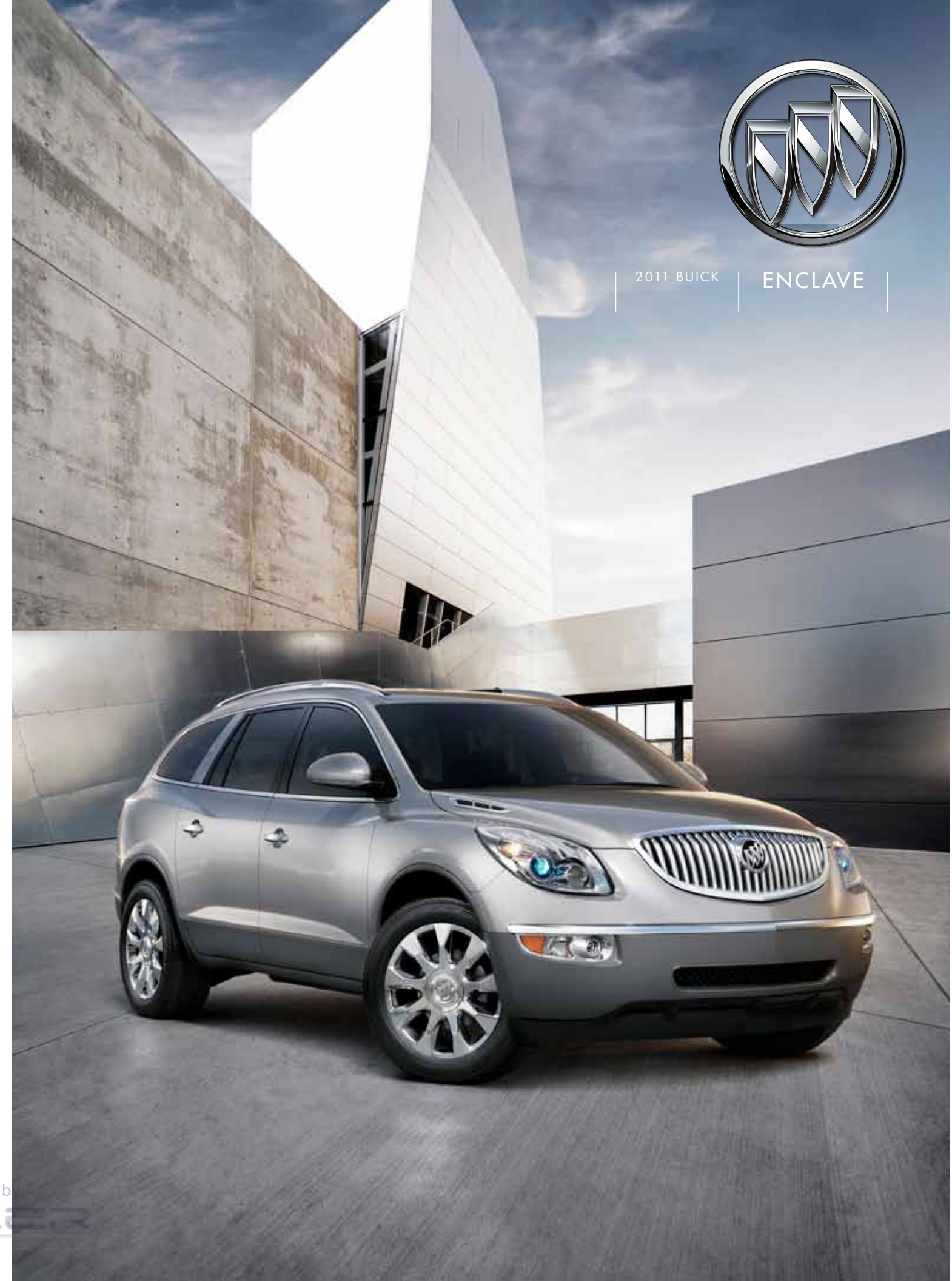


THE NEW CLASS OF WORLD CLASS



2011 BUICK

ENCLAVE



Information Provided by



You've just discovered the New, the Modern, the Intelligent. This is not another "been there, done that" moment.

2011 BUICK ENCLAVE THE NEW CLASS OF WORLD CLASS

Information Provided by:
DEALER

WORLD-CLASS VALEDICTORIAN.

WE CREATED ENCLAVE AND THE WORLD QUICKLY TOOK NOTICE. SURE IT'S STYLISH, SPACIOUS AND WELL APPOINTED. BUT WHAT REALLY EARNS IT TOP MARKS IS THAT IT'S PREMIUM WITHOUT BEING PRETENTIOUS, AND SMART WITHOUT BEING STUFFY. THREE ROWS OF FIRST-CLASS SEATING IN A QUIETTUNED INTERIOR, AN INGENUOUS NAVIGATION AND ENTERTAINMENT SYSTEM,¹ AN ACTIVE APPROACH TO SAFETY AND INTELLIGENT ALL-WHEEL DRIVE¹ ARE JUST A FEW OF THE QUALITIES THAT MAKE IT THE NEW CLASS OF WORLD CLASS.



¹Optional equipment.

Information Provided by:
DEALER

SUDDENLY, THE CLOUDS PARTED.

Once in a great while something comes along that disrupts (in a good way) our vision. That's exactly the design philosophy behind Enclave. And why it was crafted to never blend—but rather to stand far apart. Curves sweep from one end to the other. Up front, wraparound high-intensity discharge xenon headlamps provide a brighter light than halogen to help you see road signs better. From there, the signature waterfall grille, chrome portholes and sculpted lines flow undisturbed into three-dimensional, multi-lens taillamps. They're all hallmarks of Buick design introduced by Enclave.

Clearly, a new day in design has dawned.



Information Provided by:
DEALER



115 cubic ft
BEHIND THE FRONT ROW

GET LOST IN SPACE.

Discovering new places on your own is great; sharing them with seven of your closest friends is even better. We did the numbers and gave Enclave three rows of first-class seating for up to eight—something not found on any luxury crossover. And with SmartSlide, getting to the third row is simple thanks to second-row seats that easily slide forward using only one hand.

Plenty of storage space also comes along for the ride. Fold down the second- and third-row seats to create a level load floor, freeing up 115 cubic feet¹ (that's room for enough food to fill five full-size refrigerators for your next dinner party). With the third row down, you have 65.9 cubic feet, plenty of luggage space for a family of four. And with both rows up, you still have 23.3 cubic feet behind the third row for that end table you just have to have.

SKY. WHAT LIMITS? On top of plenty of leg room, there's lots of wide-open space up above. Bring the outside in to illuminate the spacious interior with an available power sunroof and companion 3-foot by 4-foot skylight. The sunroof tilts up or slides open while the skylight offers a sunshade to control all those rays. You'll thrill to the joy of open-air driving.

¹Cargo and load capacity limited by weight and distribution.



EVERY ONE IS A RESERVED SEAT.

Take the driver's, for instance. Beyond its warm camphor wood tones and brushed aluminum at-a-glance gauges, the driver's seat in Enclave is command central. Responding to you from its genuine mahogany-inlaid steering wheel—placing buttons for cruise control, speaker volume and Bluetooth®¹ at your fingertips. Passengers can enjoy the comforts that result from 1,400 hours of real-world evaluation.

French-stitched seams highlight available leather seating surfaces infused with silk and perforated for breathing and sound deadening. The driver and front-passenger seats may be heated and cooled, with the driver's power adjustable up to eight directions including lumbar, when you choose these options.

¹Go to gm.com/bluetooth to find out which Bluetooth phones are compatible with the vehicle.

THE BEST MAPS DON'T FOLD.

Don't let the art-deco-inspired analog quartz clock fool you. We gave Enclave all the latest technologies you need to find whatever you're searching for. To help guide you, the available voice- and touch-screen activated DVD NAVIGATION SYSTEM¹ charts over 6 million miles of North American roads.

To navigate those roads, optional XM NAVTRAFFIC² incorporates real-time road conditions right into your NAV screen, directing you around trouble spots and toward the most efficient route. And while you're on the road, keep your hands on the wheel thanks to BLUETOOTH³ connectivity. So get ready, the adventure is about to begin.

¹Map coverage available in the United States, U.S. Virgin Islands, Puerto Rico and Canada.

²Required XM Radio and XM NavTraffic monthly subscriptions sold separately by XM after trial period. XM NavTraffic only available in select markets. Certain real-time traffic data provided by NAVTEQ. ©2010 NAVTEQ. For more information, see xmradio.com/navtraffic.

³Go to gm.com/bluetooth to find out which Bluetooth phones are compatible with the vehicle.

DVD NAV system

OFFERS OVER 6 MILLION MILES OF NORTH AMERICAN ROADS

Information Provided



Bose® 5.1 SURROUND SOUND SYSTEM



WE NEVER MISS A BEAT.

Since music is recorded in an acoustically tuned room, we think you should hear it in a similar environment. That's why Buick pioneered the QUIETTUNING process to reduce, block and absorb noise and vibration. Leaving outside noises outside, so you're left with quiet solitude.

Nothing stands between your ears and the Bose 10-speaker 5.1 surround sound system. This available technology was engineered specifically for the Enclave cabin. The system reproduces instrumental nuances and vocal inflections captured during live recordings so you won't miss a single note.

Plug your iPod® into the available USB port¹ and your tunes travel everywhere you do. Rear-seat passengers aren't left out; they will enjoy the optional overhead DVD ENTERTAINMENT SYSTEM with an 8-inch screen and two pairs of wireless headphones.

¹Not compatible with all devices.

DOING MORE WITH MORE.

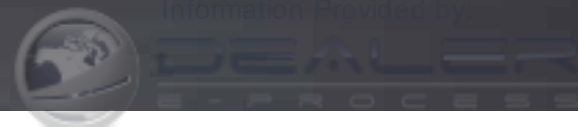
In Enclave, it's all about the power of teamwork. Intricately tuned shift points make the 6-speed automatic transmission one half of a high-tech powertrain. The other is a 288-hp 3.6L V-6 engine with direct fuel injection and Variable Valve Timing (VVT). Together, they maximize performance and efficiency, producing better highway fuel economy than any other eight-passenger crossover.¹

The gearbox is specifically engineered for either Enclave's front-wheel- or all-wheel-drive configurations. A sophisticated 32-bit control module monitors its operation and enables smooth shifts even at high speeds to help minimize vibrations. And because we realize sometimes you can't wait, you can start Enclave and activate climate controls (based on previous settings) from nearly 200 feet away with a handy optional remote starter system.

¹Based on EPA-est. 24 mpg hwy (FWD).



288-hp
3.6L VVT V-6 ENGINE

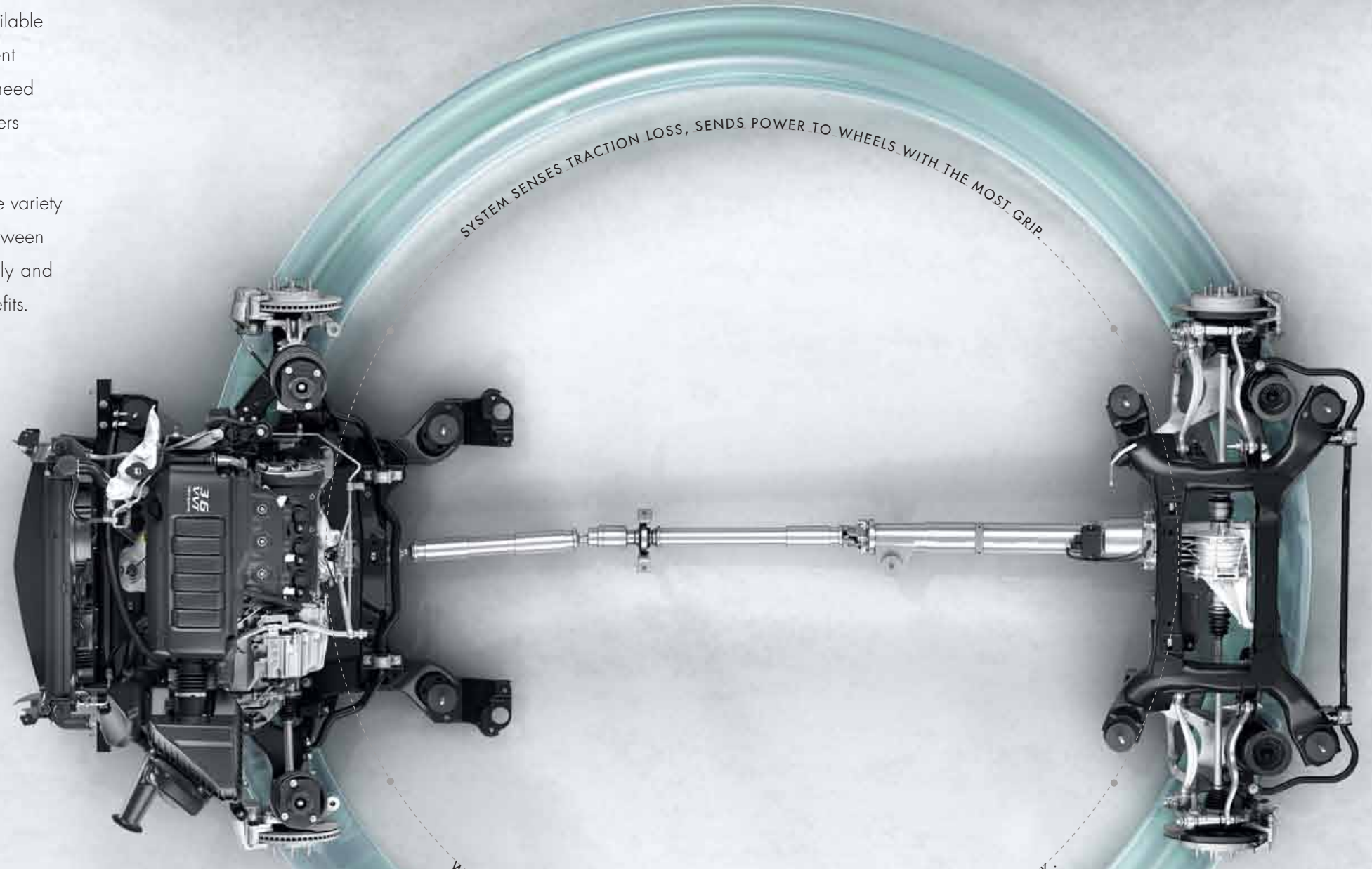




THE ART OF TRACTION.

In challenging situations, handling becomes utterly priceless. That's where Enclave's available ALL-WHEEL DRIVE (AWD) comes in. When conditions demand more traction, the intelligent AWD system doesn't ask you to push buttons. It's activated automatically when you need it most. It constantly monitors traction at all four wheels, and when it detects slip, it delivers power to the wheels with the best grip.

Unlike passive systems that merely react to wheel slippage, Enclave's AWD reads a wide variety of vehicle conditions to continuously monitor and provide optimal power distribution between all wheels. This proactive system optimizes both handling and traction independently and simultaneously. Providing both slippery-surface traction and dry-road performance benefits.



SYSTEM SENSES TRACTION LOSS, SENDS POWER TO WHEELS WITH THE MOST GRIP.

WITHOUT PUSHING A BUTTON, POWER AUTOMATICALLY SHIFTS FROM FRONT TO BACK.

AWD
ON-DEMAND SYSTEM

Information Provided by **DEALER**



HOLD THAT LINE. //



From its curved lines to the ones in the road, Enclave happily marries form with function. It may be called a crossover, but when it comes to how it looks and acts, Enclave is anything but.

Underneath its unique bodylines, Enclave boasts a four-wheel independent suspension with spring rates and stabilizer bars engineered to deliver a premium ride with stable cornering.

All four wheels work in tandem with anti-lock brakes and STABILITRAK'S electronic stability control system with rollover mitigation. StabiliTrak has the uncanny ability to constantly monitor Enclave to help retain traction and assist you in maintaining your steering path for optimal control. The technology shines when traveling over ice, snow, gravel, wet pavement or uneven roads.

A holistically designed structure strategically positions high-strength steel to create a protective safety cage for occupant protection. This includes building in crush zones in the front and rear, and giving doors the reassurance of steel-reinforcing beams to help preserve occupant space in impacts.

Inside, all rows have head curtain side-impact air bags with rollover protection, along with driver and front passenger side-impact and dual-stage frontal air bags.¹ Technology includes pretensioners (tighten belts to prevent you and your passenger from jerking forward during sudden braking) for front safety belts and side-impact door beams.

Enclave's approach to safety also includes available high-intensity discharge articulating XENON HEADLAMPS to help you see around curves and beyond corners. A quick glance in the rearview mirror allows you to see objects behind you with the available BACKUP CAMERA.

And with ONSTAR—standard for 6 months—Automatic Crash Response² can get you help fast even if you can't ask for it. In the event of a crash, built-in sensors can automatically send an alert to OnStar.

¹Always use safety belts and the correct restraint for your child's age and size. Even in vehicles equipped with the Passenger Sensing System, children are safer when properly secured in a rear seat in the appropriate infant, child or booster seat. Never place a rear-facing infant restraint in the front seat of any vehicle equipped with a passenger air bag. See the Owner's Manual and child safety seat instructions for more safety information.

²OnStar acts as a link to existing emergency service providers. Visit onstar.com for details and system limitations.



WE START FROM A POSITION OF STRENGTH.

At its core, Enclave's approach to safety helps you and your passengers feel safe and secure. Enclave's wide track, long wheelbase and low ride height help provide a stable structure for safe, confident handling. It starts with an optimized Body Frame Integral (BFI) structure that helps protect everyone in impact situations.



Information provided by





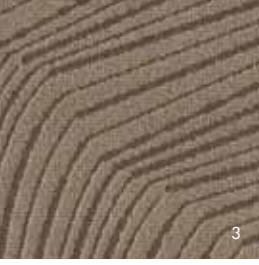
INTERIOR COLORS

from top to bottom:

TITANIUM LEATHER-APPOINTED SEATING (1) AND DARK TITANIUM TRIM.
 CASHMERE LEATHER-APPOINTED SEATING (2) AND COCOA TRIM. ALSO AVAILABLE IN CASHMERE CLOTH (3).
 EBONY LEATHER-APPOINTED SEATING (4) AND EBONY TRIM. ALSO AVAILABLE IN EBONY CLOTH (5).



2



3



4



5

ACCESSORIES¹

from top to bottom:

ROOF-MOUNTED HARD CARGO CARRIER² This lockable carrier, co-developed by Thule, is made of durable materials to provide many years of use.

DUAL-PLAYER HEAD-RESTRAINT DVD SYSTEM A 7-inch diagonal LCD flat-screen monitor and a top-loading DVD/CD/MP3 player are integrated into the back of the front head restraints, so two passengers each have their own screen. A pair of wireless two-channel headphones and a remote control are included.

ASSIST STEPS These 6-inch, high-strength aluminum steps topped with full-length traction pads make getting in and out of your Enclave easier.

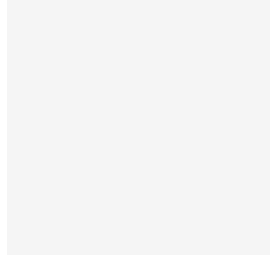
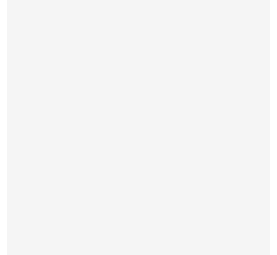
ALL-WEATHER FLOOR MATS Front and rear premium floor mats, custom-designed to conform to Enclave, have deep patterned grids to collect rain, mud, snow and debris. Nibs on back help hold mats in place.

ROOF RACK CROSS RAILS Carry a load on the roof of your Enclave with these rails. They are designed to provide both function and style. For use along with the factory rails.

19- AND 20-INCH WHEELS³ Add a new level of dimension to your Enclave with impressive 19-inch wheel choices and stunning 20-inch styles. These wheels are cast from high-strength aluminum, then given a long-lasting, brilliant chrome finish.



¹Available dealer-installed accessories.
²Cargo and load capacity limited by weight and distribution. Secure loose items before driving.
³Use only GM-approved tire and wheel combinations. Unapproved combinations may change the vehicle's performance characteristics. For important tire and wheel information, go to gmaccessorieszone.com or see your dealer for details.
⁴Additional charge, premium paint.



EXTERIOR COLORS

from top to bottom:

WHITE OPAL
 WHITE DIAMOND TRICOAT⁴
 QUICKSILVER METALLIC
 GOLD MIST METALLIC
 CYBER GRAY METALLIC
 GRAY GREEN METALLIC
 COCOA METALLIC
 RED JEWEL TINTCOAT⁴
 MING BLUE METALLIC
 CARBON BLACK METALLIC⁴



	CX	CXL 1	CXL 2
POWER AND PERFORMANCE			
DRIVETRAIN Front-Wheel Drive (FWD)	S	S	S
All-Wheel Drive (AWD)	A	A	A
ENGINE 3.6L V-6 direct-injection engine with Variable Valve Timing (VVT)	S	S	S
TRANSMISSION 6-speed automatic, electronically controlled with automatic shift grade logic, 3.16 axle ratio	S	S	S
SUSPENSION Premium ride, 4-wheel independent	S	S	S
STEERING Power, variable effort	S	S	S
BRAKES 4-wheel anti-lock, 4-wheel disc	S	S	S
TRACTION CONTROL Full-range	S	S	S
STABILITRAK Stability control system with rollover mitigation	S	S	S
EXHAUST Dual with bright chromed tips	S	S	S
ENGINE BLOCK HEATER	A	A	A
COMFORT AND CONVENIENCE			
SEAT TRIM Deluxe cloth	S	-	-
Leather seating surfaces with perforated inserts	-	S	S
SEATING 8-way power driver seat adjuster with power recline and lumbar control	S	-	-
Front passenger 2-way power (fore/aft) seat adjuster with manual recline and lumbar	S	-	-
8-way power driver seat adjuster with power recline and lumbar control and memory	-	S	S
4-way power front passenger seat adjuster with power recline and lumbar control	-	S	S
7-passenger seating, includes second-row captain's chairs, flat-folding and SmartSlide access to the third row and third-row flat-folding 60/40 split bench	S	S	S
8-passenger seating, includes second-row 60/40 bench, flat-folding and SmartSlide access to the third row and third-row flat-folding 60/40 split bench	A	A	A
Heated driver and front passenger seats	-	S	-
Heated and cooled driver and front passenger seats	-	-	S
Memory presets for 2 drivers, with 8-way power driver seat, includes easy-exit driver seat, power outside mirrors and power tilt and telescopic steering column (if equipped)	-	S	S
CONSOLE Second-row center, includes armrest, cupholders, storage and 12-volt power outlet. Not available with 8-passenger seating.	-	A	A
INSTRUMENTATION Includes Driver Information Center, tachometer, speedometer, fuel, coolant temperature, battery, gear selector, outside air temperature and compass display and engine oil life monitor	S	S	S

	CX	CXL 1	CXL 2
COMFORT AND CONVENIENCE (CONTINUED)			
STEERING WHEEL Leather-wrapped with mahogany wood accents	S	S	S
Steering-wheel-mounted controls for audio and cruise control	S	S	S
Tilt and telescopic steering column	S	S	-
Power tilt and telescopic	-	-	S
CRUISE CONTROL	S	S	S
MIRROR Inside rearview, auto-dimming	S	S	S
REAR PARKING ASSIST Ultrasonic with audible warning	A ¹	S	S
REMOTE VEHICLE STARTER SYSTEM	A ¹	S	S
BLUETOOTH®² Cell-phone connectivity to vehicle audio system	S	S	S
POWER OUTLET 3-prong household style, 115-volt	A ¹	A ¹	S
REARVIEW CAMERA SYSTEM Integrated into rearview mirror. Integrated into available DVD-based navigation display if (UUM) audio system with touch-screen navigation or (U4H) audio system with rear-seat entertainment and navigation are ordered on CXL 1 and CXL 2 models.	A ¹	S	S
VISORS Driver and front passenger illuminated vanity mirrors	S	S	S
CLIMATE CONTROL Air conditioning, tri-zone automatic, with individual climate settings for driver, front passenger and rear-seat occupants	S	S	S
Defogger, rear-window electric	S	S	S
WINDOWS Power with driver express-up and -down features and passenger express-down	S	S	S
SUNROOF Power, tilt-sliding with companion fixed-glass skylight and manual sunshade	-	A	A
QUIETTUNING Buick-pioneered process to reduce, block and absorb noise and vibration to create a quiet interior cabin	S	S	S
ENTERTAINMENT SYSTEMS			
(U8) AM/FM/XM³ STEREO With CD player and MP3 playback, speed-compensated volume, Radio Data System (RDS), ⁴ TheftLock, auxiliary input jack that enables plug/play connection of all auxiliary audio players and 6 speakers	S	S	-
(PCU) BOSE® SOUND SYSTEM With single-disc CD player with MP3 playback. Includes Advanced Bose 10-speaker system, AM/FM/XM ³ stereo, auxiliary audio jack that enables plug/play connection of all auxiliary audio players, speed-compensated volume, TheftLock, ⁴ and rear audio controls with 2 headphone jacks (headphones not included). 115-volt inverter and USB port ⁵ included.	A	A	S

	CX	CXL 1	CXL 2
ENTERTAINMENT SYSTEMS (CONTINUED)			
(UUJ) AUDIO SYSTEM WITH REAR-SEAT ENTERTAINMENT AM/FM/XM ³ stereo CD player, MP3 playback and Advanced Bose 10-speaker 5.1 surround sound DVD Entertainment System, auxiliary audio jack that enables plug/play connection of all auxiliary audio players, speed-compensated volume, TheftLock and RDS. ⁴ DVD Entertainment System includes 8" screen, rear audio controls with 2 headphone jacks and 2 wireless headphones. 115-volt inverter and USB port ⁵ included.	-	A	A
(UUM) AUDIO SYSTEM WITH NAVIGATION⁶ AM/FM/XM ³ stereo CD player, MP3 playback, Advanced Bose 10-speaker system and DVD-based touch-screen navigation system with rearview camera. Includes auxiliary audio jack that enables plug/play connection of all auxiliary audio players, speed-compensated volume, TheftLock, RDS ⁴ and rear audio controls with 2 headphone jacks (headphones not included). 115-volt inverter and USB port ⁵ included.	-	A	A
(U4H) AUDIO SYSTEM WITH REAR-SEAT ENTERTAINMENT AND NAVIGATION⁶ AM/FM/XM ³ stereo, Advanced Bose 10-speaker 5.1 surround sound DVD Entertainment System and DVD-based touch-screen navigation system with rearview camera. Includes auxiliary audio jack that enables plug/play connection of all auxiliary audio players, speed-compensated volume, TheftLock and RDS. ⁴ DVD entertainment system includes 8" screen, rear audio controls with 2 headphone jacks and 2 wireless headphones. 115-volt inverter and USB port ⁵ included.	-	A	A
XM RADIO³ Includes 3 trial months of service. For more information, visit gm.xradio.com.	S	S	S
XM NAVTRAFFIC⁷ Satellite-delivered traffic information service that enhances a GPS navigation system with the ability to show real-time traffic data. Requires UUM or U4H audio systems.	-	A	A
USB PORT⁵ Connectivity for various digital media	A ¹	A ¹	S
SAFETY AND SECURITY			
AIR BAGS⁸ Dual-stage frontal and side-impact driver and right-front passenger	S	S	S
Head curtain side-impact air bags for first-, second- and third-row outboard passengers with Passenger Sensing System and rollover protection	S	S	S
POWER DOOR LOCKS Programmable with rear child security	S	S	S
ONSTAR⁹ Six months of Directions & Connections plan	S	S	S
THEFT-DETERRENT SYSTEM PASS-Key III, engine immobilizer and content theft alarm	S	S	S
TIRE PRESSURE MONITOR SYSTEM Does not apply to spare tire	S	S	S

	CX	CXL 1	CXL 2
STYLING AND FUNCTIONALITY			
LIGHTS High-Intensity Discharge (HID) xenon, projector headlamps, high/low bi-functional with blue-tint lenses and chromed bezels	S	S	S
Articulating headlamps	-	-	S
Fog lamps, front halogen with projector technology	S	S	S
Daytime running lamps with automatic exterior lamp control	S	S	S
Headlamp control with automatic on/off	S	S	S
GLASS Solar-Ray deep-tinted, rear-side, quarter panel and liftgate	S	S	S
OUTSIDE MIRRORS Heated, power-adjustable, body-color with integrated turn signal indicators	S	S	S
Manual-folding	S	S	-
Heated, power-folding body-color with driver-side auto-dimming and memory	-	-	S
WIPERS Front and rear intermittent with washers	S	S	S
REAR LIFTGATE Power	S	S	S
LUGGAGE RACK SIDE RAILS Roof-mounted, chromed	S	S	S
LICENSE PLATE BRACKET Front mounting package	A	A	A
PACKAGES			
DRIVER CONFIDENCE PACKAGE Includes remote vehicle starter system, Ultrasonic Rear Parking Assist and rearview camera system integrated into rearview mirror	A	S	S
LUXURY PACKAGE Includes outside, power-folding, auto-dimming driver-side, body-color, heated mirrors with turn signal indicators; articulating headlamps; power, tilt and telescopic steering column; heated and cooled driver and front passenger seats	-	-	S
HIT-THE-ROAD ACCESSORY PACKAGE Includes body-color molded assist steps, Roof Rack Cross Rail Package and cargo area all-weather floor mat (dealer-installed accessories)	A	A	A
TRAILERING PROVISION PACKAGE Extends trailering capacity up to 4,500 lbs. ¹⁰ Includes heavy-duty engine cooling system, wiring harness and factory-installed hitch. Includes compact aluminum spare wheel.	A	A	A

¹Requires available option package.
²Go to gm.com/bluetooth to find out which Bluetooth phones are compatible with the vehicle.
³XM Radio requires a subscription, sold separately by XM after the first 90 days. XM Radio U.S. service only available in the 48 contiguous United States and the District of Columbia. For more information, visit gm.xradio.com.
⁴RDS functions only where stations broadcast RDS information.
⁵Not compatible with all devices.
⁶Map coverage available in the United States, U.S. Virgin Islands, Puerto Rico and Canada.
⁷Required XM Radio and XM NavTraffic monthly subscriptions sold separately by XM after trial period. XM NavTraffic only available in select markets. Certain real-time traffic data provided by NAVTEQ. ©2010 NAVTEQ. For more information, see xradio.com/navtraffic.
⁸Always use safety belts and the correct restraint for your child's age and size. Even in vehicles equipped with the Passenger Sensing System, children are safer when properly secured in a rear seat in the appropriate infant, child or booster seat. Never place a rear-facing infant restraint in the front seat of any vehicle equipped with a passenger air bag. See the Owner's Manual and child safety seat instructions for more safety information.
⁹OnStar services require vehicle electrical system (including battery), wireless service and GPS satellite signals to be available and operating for features to function properly. OnStar acts as a link to existing emergency service providers. Subscription Service Agreement required. Call 1-888-4ONSTAR (466-7827) or visit onstar.com for OnStar's Terms and Conditions, Privacy Policy, details and system limitations.
¹⁰Maximum trailer weight ratings are calculated assuming a base vehicle, except for any option(s) necessary to achieve the rating, plus driver. The weight of other optional equipment, passengers and cargo will reduce the maximum trailer weight your vehicle can tow. See your dealer for additional details.



	CX	CXL 1	CXL 2
WHEELS			
P64 19" 15-spoke machined aluminum	S	S	-
P6A 19" 9-spoke chrome-clad aluminum	-	A	S
PPE 20" chrome-clad aluminum ¹	-	-	A
TIRE SEALANT AND INFLATOR KIT	S	-	-
WHEEL Spare, compact, steel	A	S	S



SPECIFICATIONS AND CAPACITIES

ENGINE TYPE	3.6L VVT V-6 direct injection
HORSEPOWER (HP @ RPM)	288 @ 6300 rpm
TORQUE (LB-FT @ RPM)	270 lb-ft @ 3400 rpm
EPA-ESTIMATED MPG	17 city/24 hwy FWD 16 city/22 hwy AWD
CARGO VOLUME (CU. FT.)²	115 behind 1st-row seats with 2nd and 3rd row folded 65.9 behind 2nd-row seat with 3rd row folded 23.3 behind 3rd-row seat
SEATING CAPACITY	2/2/3 or 2/3/3 (front/middle/rear)
FUEL TANK (APPROX.)	22 gallons
BASE CURB WEIGHT	4,780 CX, CXL FWD 4,980 CX, CXL AWD
MAX. TRAILER WEIGHT³	4,500-lbs rating with available Trailing Provision Package (2,000 lbs without package)

¹Use only GM-approved tire and wheel combinations. For important tire and wheel information, go to gmaccessorieszone.com or see your dealer for details. ²Cargo and load capacity limited by weight and distribution. ³Maximum trailer weight ratings are calculated assuming a base vehicle, except for any option(s) necessary to achieve the rating, plus driver. The weight of other optional equipment, passengers and cargo will reduce the maximum trailer weight your vehicle can tow. See your dealer for additional details.

DIMENSIONS (INCHES)

WHEELBASE	118.9
OVERALL LENGTH	201.8
BODY WIDTH	79.0
OVERALL HEIGHT, WITH LUGGAGE RACK	72.5
OVERALL HEIGHT, W/O LUGGAGE RACK	69.6
MINIMUM GROUND CLEARANCE	8.4
HEAD ROOM, 1ST ROW	40.4
HEAD ROOM, 2ND ROW, WITH SUNROOF	38.7
HEAD ROOM, 2ND ROW, W/O SUNROOF	39.3
HEAD ROOM, 3RD ROW	37.7
SHOULDER ROOM, 1ST ROW	62.0
SHOULDER ROOM, 2ND ROW	61.4
SHOULDER ROOM, 3RD ROW	57.4
HIP ROOM, 1ST ROW	57.4
HIP ROOM, 2ND ROW	57.0
HIP ROOM, 3RD ROW	48.3
LEG ROOM, 1ST ROW	41.3
LEG ROOM, 2ND ROW	36.9
LEG ROOM, 3RD ROW	33.2

CX, CXL 1, CXL 2

IMPORTANT WORDS ABOUT THIS CATALOG.

Since some information may have been updated since the time of printing (July 2010), please check with your Buick dealer for complete details. Buick reserves the right to lengthen or shorten the model year for any product for any reason, or to start and end model years at different times.

NEW-VEHICLE LIMITED WARRANTY. This warranty is for GM vehicles registered in the U.S.A. See your Buick dealer for terms and conditions.

A 5-year/100,000-mile (whichever comes first) Transferable Powertrain Limited Warranty plus Roadside Assistance and Courtesy Transportation.

Covered for 4 years/50,000 miles (whichever comes first): The complete vehicle | Cosmetic corrosion resulting from defects | Tires | Repairs made to correct any vehicle defect | Towing to your nearest Buick dealership | No charge for most warranty repairs

Covered for 6 years/100,000 miles (whichever comes first): Rust-through corrosion

AN IMPORTANT NOTE ABOUT ALTERATIONS AND WARRANTIES. Installations or alterations to the original equipment vehicle (or chassis) as distributed by General Motors are not covered by the General Motors New-Vehicle Limited Warranty. The special body company, assembler, equipment installer or upfitter is solely responsible for warranties on the body or equipment and any alterations (or any effect of the alterations) to any of the parts, components, systems or assemblies installed by GM. General Motors is not responsible for the safety or quality of design features, materials or workmanship of any alterations by such suppliers.

ASSEMBLY. Buick vehicles and their components are assembled or produced by different operating units of General Motors, its subsidiaries or suppliers to GM worldwide. We sometimes find it necessary to produce Buick vehicles with different or differently sourced components than originally scheduled. Since some options may be unavailable when your vehicle is assembled, we suggest that you verify that your vehicle includes the equipment you ordered or, if there are changes, that they are acceptable to you.

ENGINES. Buick products are equipped with engines produced by GM Powertrain or other suppliers to GM worldwide. The engines in Buick products may also be used in other GM makes and models.

TRAILERING AND OFF-ROAD DRIVING INFORMATION. Please go to buick.com and carefully review the vehicle Owner's Manual for important safety information about trailering or off-road driving in your vehicle.

A NOTE ABOUT CHILD SAFETY. Always use safety belts and the correct restraint for your child's age and size. Even in vehicles equipped with the Passenger Sensing System, children are safer when properly secured in a rear seat in the appropriate infant, child or booster seat. Never place a rear-facing infant restraint in the front seat of any vehicle equipped with a passenger air bag. See the Owner's Manual and child safety seat instructions for more safety information.



FLEET ORDERS. Some standard content may be deleted with fleet orders. See dealer for details.

ENHANCE YOUR OWNERSHIP EXPERIENCE. The Owner Center at My GMLink is an online service that helps you make the most of your vehicle ownership.

Sign up for e-mail reminders about service visits | Keep an online history of services performed | Read your vehicle Owner's Manual, warranty and more online | Receive the recall notices that apply only to your vehicle | Watch do-it-yourself videos and much more.

Register today at mygmlink.com.

GM, the GM logo, Buick, the Buick emblem, OnStar, the OnStar emblem and the slogans, emblems, vehicle model names, vehicle body designs and other marks appearing in this catalog are the trademarks and/or service marks of General Motors, its subsidiaries, affiliates or licensors. The XM name and related logos are registered trademarks of XM Satellite Radio, Inc. Facebook is a registered trademark of Facebook, Inc. iPod is a registered trademark of Apple, Inc. ©2010 General Motors. All rights reserved. Litho in U.S.A., July 2010.

To learn more about why Goodwrench service is the perfect companion for your Enclave, click on goodwrench.com.

