

LACROSSE

BUICK.COM

Discover more about Buick and join the dialogue on Facebook.
facebook.com/buick

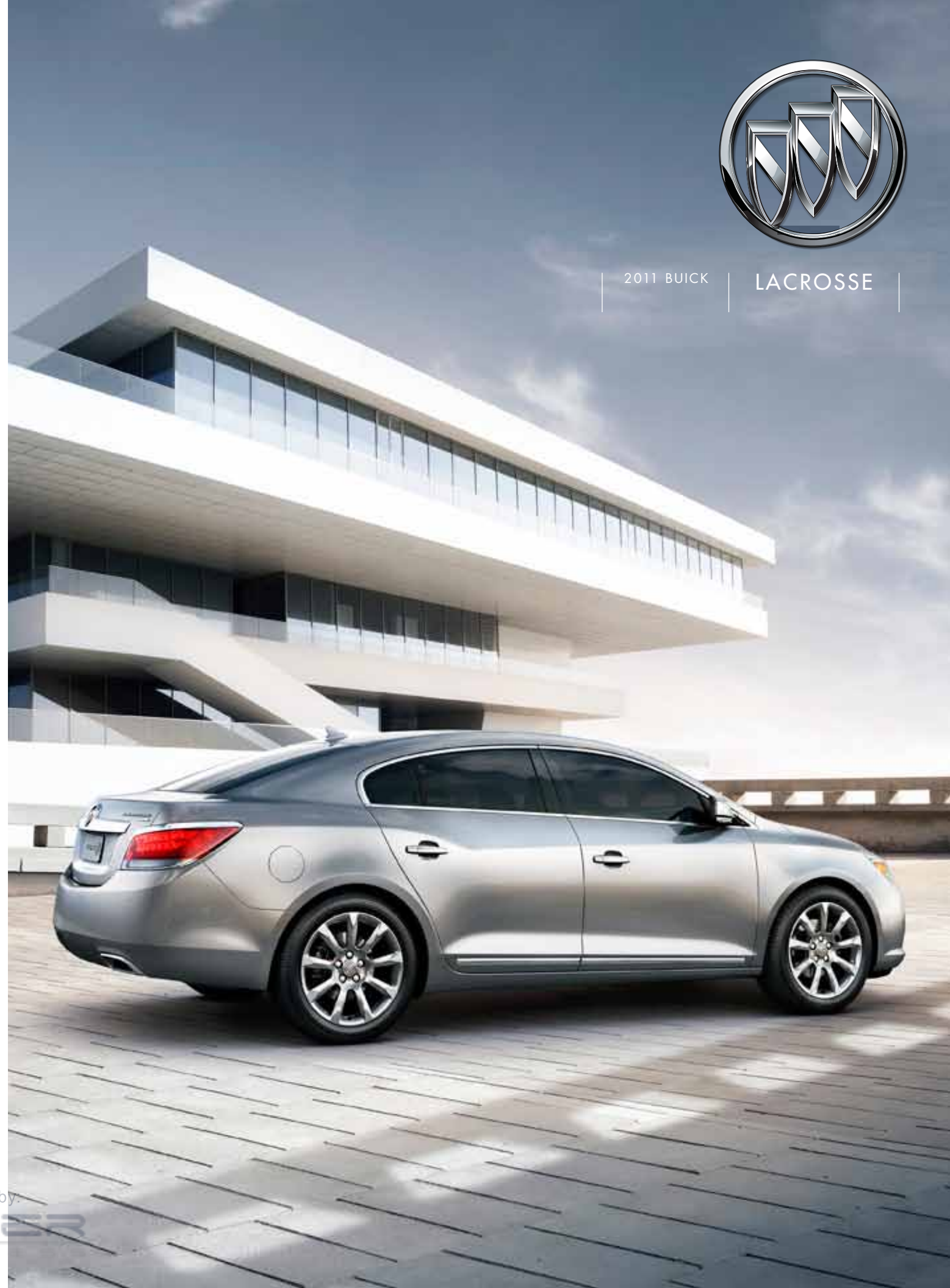


THE NEW CLASS OF WORLD CLASS



2011 BUICK

LACROSSE




Information Provided by



The world never saw it coming. Out of the blue it appeared. Changing everything going forward. Reshaping. Reimagining. Refreshing.

2011 BUICK LACROSSE THE NEW CLASS OF WORLD CLASS

Information Provided by:
 **DEALER**

WHERE THE WORLD IS TURNING.

WE INFUSED LACROSSE WITH SOMETHING COMPLETELY NEW. THE SMARTEST THINKING EXECUTED IN THE FRESHEST WAYS EQUALS AN ENLIGHTENED DRIVING EXPERIENCE. REDEFINING THE TERM MODERN LUXURY SEDAN WHEREVER YOU LOOK, TOUCH AND ENGAGE.

ON THE OUTSIDE, ITS LINES ARE SMOOTH AND FLOWING. LEADING FROM ONE SCULPTED CURVE TO THE NEXT—ALMOST BEGGING YOU TO TOUCH IT. YOU'LL FIND THE SAME UNINTERRUPTED, FLOWING LINES INSIDE. LACROSSE ALSO OFFERS ADVANCED PERFORMANCE, ENTERTAINMENT AND NAVIGATION TECHNOLOGY. OPENING DOORS TO NEW EXPERIENCES LIES AT THE VERY SOUL OF THE NEW CLASS OF WORLD CLASS.

YOUR DISCOVERY BEGINS NOW.



ENGINE
START/STOP

LET'S GET THIS PERFORMANCE STARTED.



The optional push-button start is much more than a modern way to ignite LaCrosse's responsive performance. It represents an appropriate beginning to a journey that unites engine, transmission and suspension in a formidable configuration.

The Buick approach to motion is all about you possessing power as well as the ability to handle it. As you'll discover, once you press Start in the LaCrosse, an elaborate series of technologies begin communicating in anticipation of the driver's shift into Drive. At that very moment, highly sophisticated systems spanning engine, transmission, available all-wheel drive, suspension, handling and safety are sharing data all in preparation to go.

provided by
N I P
ACCESS

COLUMBUS WOULD BE PROUD.

Sitting behind the wheel of a Buick means having the knowledge to discover and explore new lands. To help you navigate, the available voice- and touch-screen-activated hard-drive-based NAVIGATION SYSTEM¹ in LaCrosse offers over 6 million miles of North American roads.

To save time, optional XM NAVTRAFFIC² incorporates real-time traffic and road conditions right into your Nav screen, directing you around trouble spots and toward the most efficient route. And while you're on the road, your hands don't have to leave the wheel thanks to available BLUETOOTH.³ LaCrosse lets you pair your Bluetooth-enabled phone with hands-free features to talk, store numbers and receive calls through the audio system. So go forth. There's no telling what you'll discover.

¹Map coverage available in the United States, U.S. Virgin Islands, Puerto Rico and Canada. ²Required XM Radio and XM NavTraffic monthly subscriptions sold separately by XM after trial period. XM NavTraffic only available in select markets. Certain real-time traffic data provided by NAVTEQ. ©2010 NAVTEQ. For more information, see xmradio.com/navtraffic. ³Go to gm.com/bluetooth to find out which Bluetooth phones are compatible with the vehicle.



Voice-activated
HARD-DRIVE-BASED NAVIGATION

by:

THE DRIVER WON'T BE THE ONLY ONE ENTERTAINED.

LaCrosse ensures that half the fun of getting there is the sights and sounds you discover inside. Buick's QUIETTUNING process reduces, blocks and absorbs noise to make LaCrosse an acoustic haven. The laminated windshield, triple door seals, minute body panel tolerances and other acoustical technologies throughout help outside noises stay outside.

So then you can hear the optional Harman Kardon® 5.1 Matrix surround sound system and its 11 speakers pumping out 384 watts of your favorite tunes. Speaking of which, there's an available USB port¹ to sync your iPod®.

LaCrosse also offers an optional hard drive packing 40GB of navigation power and music-storing capacity for thousands of songs.² Like your home DVR, you can pause and replay live radio. If you're listening to a game on available XM³ and your cell phone rings, hit pause, take your call and after hanging up, pick up the action where you left off.

¹Not compatible with all devices. ²10GB for music storage, 30GB for navigation storage. ³XM Radio requires a subscription, sold separately by XM after the first 90 days. XM Radio U.S. service only available in the 48 contiguous United States and the District of Columbia. For more information, visit gm.xmradio.com.



Harman Kardon

SURROUND SOUND SYSTEM



Information Provided by



And to entertain back-seat passengers, the LaCrosse offers integrated dual rear seatback-mounted DVD screens (each one allows for independent video playback or use of an auxiliary device like a gaming console) with available companion wireless headphones.



PERFORMANCE ART.

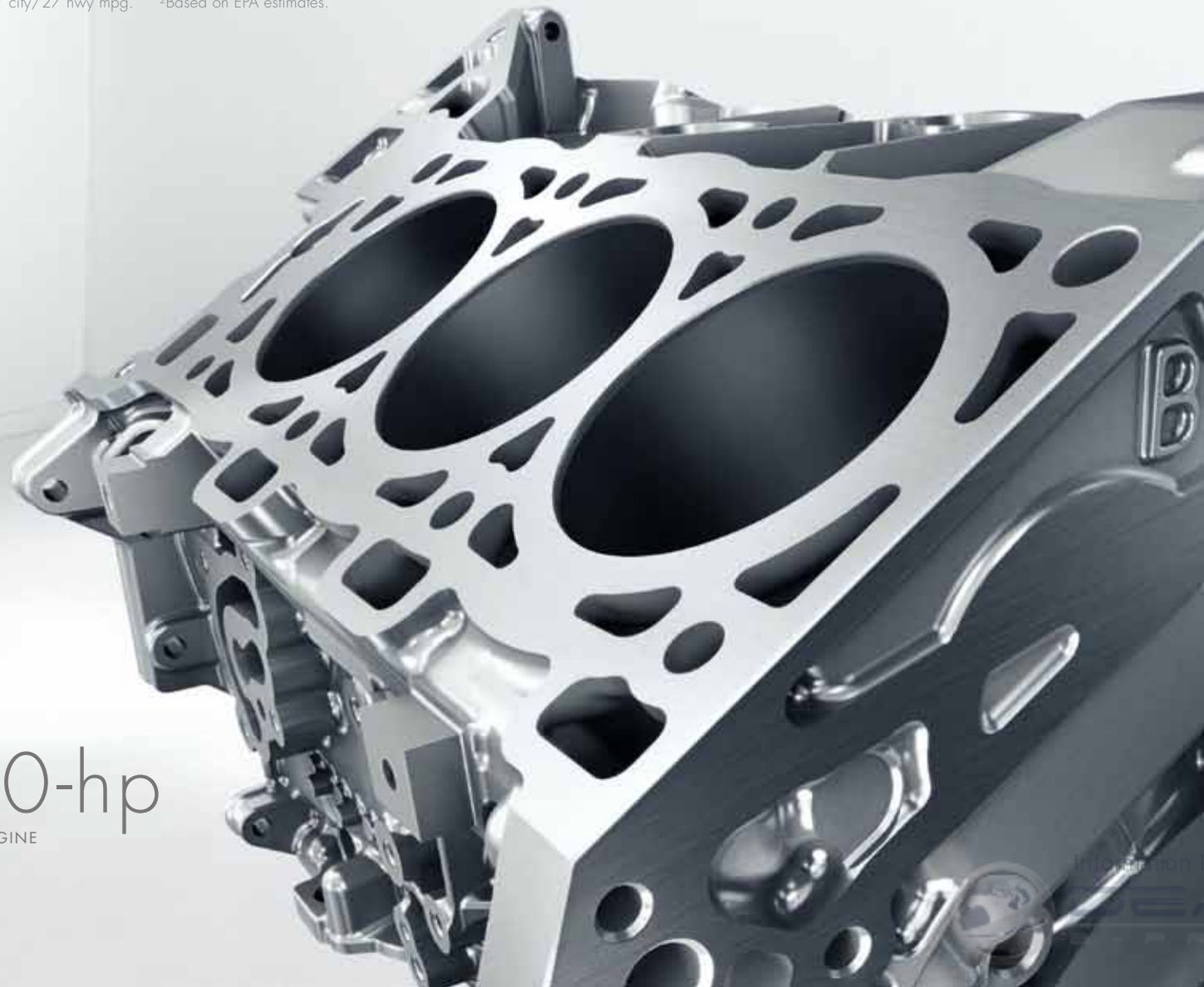
Is it a highly advanced piece of engine technology or a work of art? Yes.

Being a Buick means performance isn't merely measured in numbers. It's determined by how the driver uses, controls and channels that power. So while the optional 3.6L V-6 uses direct fuel injection and variable valve timing to generate 280 hp and 259 lb-ft of torque, that's not the entire story.

Pair it with an electronically controlled 6-speed automatic transmission, and now you're fully maximizing performance while still delivering remarkable fuel efficiency! The controlled "hands-on" experience comes when you simply move the gear selector to the left for the clutchless manual operation of DRIVER SHIFT CONTROL. A quick tap is all that's needed for smooth, crisp shifts.

You'll also find a technological marvel inside the 2.4L 182-hp ECOTEC four-cylinder engine. Dual overhead cams, variable valve timing and direct fuel injection deliver the optimal balance of low-end torque and high-end horsepower. This ingenious engineering produces enhanced performance and an impressive 19 city/30 hwy mpg²

¹EPA-estimated 17 city/27 hwy mpg. ²Based on EPA estimates.



280-hp
3.6L V-6 ENGINE

PUTTING OUR BEST GRIP FORWARD.

Fortunately, we never leave well enough alone—in this case, traditional front suspensions. With all of LaCrosse's horsepower, we created the HiPer (short for High Performance) Strut Front Suspension on the CXS model to handle it.

LaCrosse's chief engineer describes it best: "The most significant attribute of HiPer Strut is what the driver doesn't feel. Torque steer will be minimized (when steering pulls to one side during full acceleration); the normal tugging and vibration felt through the steering wheel on rough roads is significantly reduced. They simply experience a smoother, more controlled and more balanced driving experience."

In other words, it improves grip in dry and wet conditions, as well as the direct feel of the road.





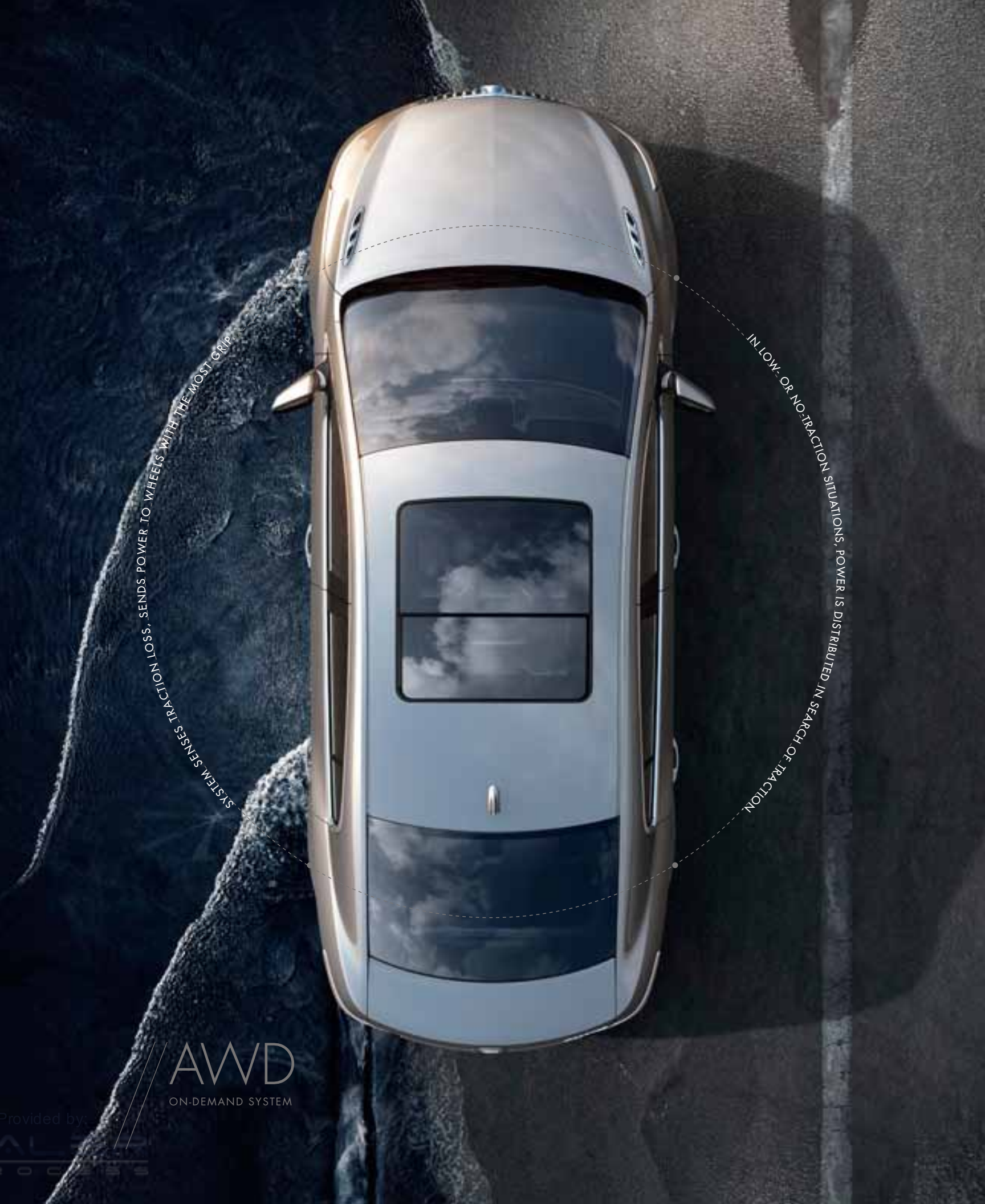
WORD ON THE STREET IS, IT'S ONE SMART SYSTEM.

The intelligent ALL-WHEEL-DRIVE (AWD) system available on the LaCrosse CXL model turns handling into a team sport. It's one of the most advanced all-wheel-drive systems on the road. Combined with an electronic limited-slip differential, AWD helps optimize traction by distributing power to the wheels with the most grip. In low-traction situations, it can send up to 50 percent of engine torque to an individual front wheel and up to 85 percent to either rear wheel (as illustrated at right). Seamlessly integrated with StabiliTrak and traction control, AWD helps handle dry, wet and snowy roads.



Information Provided by:

AWD
ON-DEMAND SYSTEM



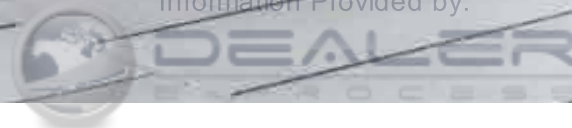
SEPARATED AT BIRTH.

Architects. Buick designers. At times like this, it's hard to tell them apart. They both create one-of-a-kind designs that reinvent what has gone before—or in this case, The New Class of World Class. Using the very finest materials, they astound all who visit.

The sweeping lines of LaCrosse never seem to end. Seductive and uninterrupted, they lead you from one curve to the next. This sense of continuity is found throughout LaCrosse. Like how wraparound headlamps flow into the side sweep spears, which merge seamlessly into the LED taillamps. Along the way, they complement Buick's signature chrome portholes and waterfall grille. It's been said by many an admirer, "It takes you places even standing still." And isn't that really the beauty of the world's most striking designs?



Information Provided by:



SURROUND SOUND FOR THE REST OF YOUR SENSES.

The Buick Design Philosophy of uninterrupted, flowing lines continues inside the sculpted LaCrosse interior. The ice-blue ambient lighting welcomes and calms you. Highly crafted, premium materials like contrasting French-seam stitching, smoked chrome accents and dark poplar wood grain appliques surround you in style.

Ventilated and heated leather-appointed front seats and a heated steering wheel are available for year-round comfort. As is a power rear-window sunshade. And the soft-touch instrument panel with real stitching not only provides a tactile feel, but its "low and away" design gives the cabin a sense of openness.



Information Provided by

DEALER
PROCESS

Ice-blue
AMBIENT LIGHTING

A FITTING TRIBUTE.

Since Buick has always stood for quality, we consulted the finest minds from around the globe—from engineers in Germany and designers in China to manufacturing experts in the United States—to create a LaCrosse like no other. Producing a modern luxury sedan means considering everything. No matter how small.

Actually, more than 1,000 critical points in LaCrosse have been obsessively scrutinized—resulting in precise craftsmanship. Materials and technology from the inside out were evaluated and chosen with strict tolerances for appearances, durability and ease of use. And with tight interior and exterior surface-to-surface harmony, LaCrosse clearly achieves world-class fit and finish. This results in a superb driving experience today, tomorrow and a very long way down the road.

Information Provided by:



DEALER

OUT HERE, PASSING GRADES AREN'T ENOUGH.

On the world's most grueling test tracks, performance and durability are merely theories until you put them to the test. That's exactly what LaCrosse did, over and over again. From computer simulations while still on the drawing board, to thousands of hours and millions of miles spent taking LaCrosse to its breaking point and beyond.

A team of quality-obsessed engineers not only put LaCrosse through its 0-60 and 60-0 performance paces, they also took the smallest components and methodically tortured them. Like pushing all the buttons over a half a million times in temperatures ranging from -40 to 185 degrees. It's the kind of course work you do when excellence is around the next curve.



You'll find six air bags for protection. They include dual-stage frontal and side-impact driver and right-front passenger with Passenger Sensing System, head curtain side-impact and front and rear outboard seating positions.¹ Plus, rear outboard seat-mounted thorax air bags are available.

For enhanced visibility, available XENON High-Intensity Discharge (HID) articulating headlamps turn as you turn. They help you see and respond to approaching obstacles sooner for enhanced nighttime cornering.

The optional HEAD-UP DISPLAY (HUD) allows you to see instrumentation without taking your eyes off the road. And available SIDE BLIND ZONE ALERT uses radar to warn you when another vehicle is in your outside mirror blind spot.² You won't find this combination of collision avoidance technologies on Acura TL, Infiniti G37 or even Lexus ES 350.

An available REARVIEW CAMERA SYSTEM can help you see objects while in reverse, so you might say your back is covered, too. Even the available LED turn signal indicators on the side mirrors are designed to provide greater visibility to drivers in the blind spot areas around and behind LaCrosse. Just to be safe.

With OnStar³ Directions & Connections plan, standard for six months, you've got all the help you'll need. Wherever you travel, Automatic Crash Response can send an alert to OnStar in case of a crash. You can get help fast even if you can't ask for it.



"WHAT IF" DOESN'T STAND A CHANCE.

Buick's proactive approach to safety provides you with technologies and information to help anticipate situations and conditions rather than just react when they appear. In LaCrosse, safety features abound. Right from the start, LaCrosse was engineered with a Body Frame Integral (BFI) structure that helps protect you and your passengers in impact situations. Strategically positioned high-strength steel helps enable refined ride and handling while creating a protective safety cage for occupant protection.



Information Provided by



DEALER

¹Always use safety belts and the correct restraint for your child's age and size. Even in vehicles equipped with the Passenger Sensing System, children are safer when properly secured in a rear seat in the appropriate infant, child, or booster seat. Never place a rear-facing infant restraint in the front seat of any vehicle equipped with a passenger air bag. See the Owner's Manual and child safety seat instructions for more safety information. ²Before making a lane change, always check the Side Blind Zone Alert display, check the side and inside rearview mirrors, look over your shoulder for vehicles and hazards and start the turn signal. ³Go to onstar.com for details and system limitations.



INTERIOR COLORS

from top to bottom:

LIGHT TITANIUM LEATHER-APPOINTED SEATING (1) AND DARK TITANIUM TRIM. ALSO AVAILABLE IN LIGHT TITANIUM CLOTH (2).
CASHMERE LEATHER-APPOINTED SEATING (3) AND COCOA TRIM. ALSO AVAILABLE IN CASHMERE CLOTH (4).
EBONY LEATHER-APPOINTED SEATING (5) AND EBONY TRIM.



ACCESSORIES¹

from top to bottom:

CARGO TRAY Designed to protect LaCrosse's trunk area, its heavy-duty nonskid surface and raised outer lip help contain cargo and spills.

REAR SPOILER This one-piece, custom-molded spoiler adds to the already sweeping lines of your LaCrosse. Its integrated attachments and matching body color make for a seamless addition.

NOISE-CANCELLING HEADPHONES The ultimate in sound entertainment, these acoustically tuned headphones help reduce road and engine noise while providing a movie- or concert-like listening experience. For use with DVD Entertainment System and for rear-passenger use only.

REAR SPLASH GUARDS Designed and engineered custom-molded splash guards fit directly behind your wheels and help protect against tire splashes and mud. Specifically tooled for your vehicle and include styling features to accent the exterior.

ALL-WEATHER FLOOR MATS Front and rear premium floor mats, custom-designed to conform to LaCrosse, have deep-patterned grids to collect rain, mud, snow and debris. Nibs on back help hold mats in place.

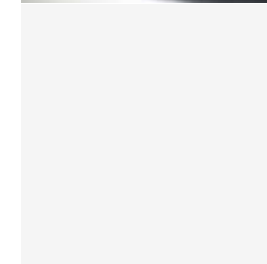
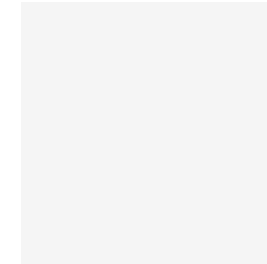
19-INCH WHEELS² Accentuate LaCrosse's wide, athletic stance with distinctive painted/polished 5-spoke aluminum wheels.



¹Available dealer-installed accessories.

²Use only GM-approved tire and wheel combinations. Unapproved combinations may change the vehicle's performance characteristics. For important tire and wheel information, go to gmaccessorieszone.com or see dealer for details.

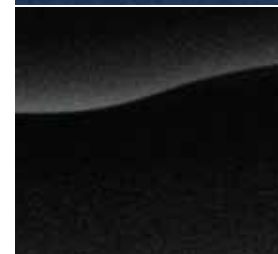
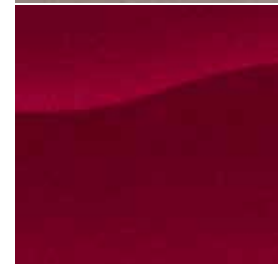
³Additional charge, premium paint.



EXTERIOR COLORS

from top to bottom:

SUMMIT WHITE
WHITE DIAMOND TRICOAT³
QUICKSILVER METALLIC
GOLD MIST METALLIC
MOCHA STEEL METALLIC
RED JEWEL TINTCOAT³
MIDNIGHT BLUE METALLIC
CARBON BLACK METALLIC³



	CX	CXL	CXS
POWER AND PERFORMANCE			
DRIVETRAIN All-wheel drive	-	A	-
ENGINES 2.4L DOHC, SIDI 4-cylinder engine with Variable Valve Timing (VVT)	S	S ¹	-
3.6L DOHC, SIDI V-6 engine with VVT. Standard on CXL AWD model.	A	A	S
TRANSMISSION 6-speed automatic, electronically controlled with overdrive, includes Driver Shift Control, tap up/tap down	S	S	S
AXLE 2.77 ratio	A ²	A ²	S
3.23 ratio	S	S ¹	-
Electronic limited-slip rear differential. AWD model.	-	S	-
SUSPENSION Front, MacPherson strut	S	S	-
Front, HiPer strut	-	-	S
Rear, 4-link	S	S ¹	S
Rear, H-arm. Standard on CXL AWD model.	-	-	A ³
STEERING Power, electric	S	S	-
Power, rack-and-pinion, magnetic, variable effort. Standard on CXL AWD model.	A ²	A ²	S
Power, rack-and-pinion	A	-	-
BRAKES 4-wheel anti-lock, 4-wheel disc with intelligent assist	S	S	S
TRACTION CONTROL	S	S	S
STABILITRAK Vehicle stability enhancement system	S	S	S
EXHAUST Dual stainless steel. Bright tips on CXS model.	S	S	S
BATTERY Maintenance-free with rundown protection	S	S	S
ENGINE BLOCK HEATER	A	A	A
COMFORT AND CONVENIENCE			
SEAT TRIM Cloth	S	-	-
Leather-appointed	-	S	-
Perforated leather-appointed	-	A ⁴	S
SEATING Front bucket seats with 8-way power driver's seat	S	S	S
Heated driver and front passenger seats	-	S	S
Ventilated driver and front passenger seats	-	A ⁴	S
Driver 4-way power lumbar seat adjuster	A ⁴	S	S
Front passenger 4-way manual, 2-way power vertical seat adjuster	S	-	-
Front passenger 8-way power seat adjuster	A ⁴	S	S
2-way front adjustable headrests, rear outboard adjustable	S	S	S
ARMRESTS Front sliding armrest with multi-level storage	S	S	S
Rear center with 2 integral cupholders	S	S	S
ASSIST HANDLES Front and rear outboard	S	S	S
DISPLAY Enhanced one-color with driver instrument information	S	S	-
Enhanced multi-color with driver instrument information	-	-	S
COMPASS DISPLAY	S	S	S

S = Standard A = Available - = Not Available

	CX	CXL	CXS
COMFORT AND CONVENIENCE (CONTINUED)			
HEAD-UP DISPLAY (HUD) Projects driver information onto windshield	-	A ⁴	A ⁴
BLUETOOTH®⁵ Personal cell-phone connectivity to vehicle audio system	A ⁴	S	S
STEERING WHEEL Leather-wrapped rim	S	S	-
Leather and wood grain, heated	-	A ⁴	S
Steering-wheel-mounted audio controls	S	S	S
Rake- and telescopic-adjustable steering column	S	S	S
CRUISE CONTROL	S	S	S
SHIFT KNOB Leather-wrapped	S	S	S
PARKING BRAKE Electric powered	S	S	S
LIGHTING Custom, interior front and rear reading, front footwell and puddle lights	S	S	S
Ice-blue ambient front and rear door, console and instrument panel light pipe	S	S	S
MIRRORS Inside rearview, manual day/night	S	-	-
Inside rearview, auto-dimming	A ⁴	S	S
CLIMATE CONTROL Air conditioning, single-zone automatic	S	-	-
Air conditioning, dual-zone automatic with individual settings for driver and front passenger and rear-seat heating/cooling outlets	A ⁴	S	S
Air filtration system	S	S	S
Defogger, rear-window electric	S	S	S
WINDOWS Power with front express-up/down, rear express-down	S	S	S
CUPHOLDERS 2 front console, covered; 2 rear armrest	S	S	S
AUXILIARY POWER OUTLETS 2 12-volt	S	S	S
120-volt, 3-prong household-style power outlet (150-watt max capacity)	A ⁴	A ⁴	S
SUNROOF Power, oversized	-	A	A
SUNSHADE Power, rear	-	A ⁴	S
FLOOR MATS Carpeted front and rear with front fixation points	S	S	S
TRUNK CARGO NET	S	S	S
REARVIEW CAMERA SYSTEM Requires available UYS audio system with navigation	-	A ⁴	A
ULTRASONIC REAR PARKING ASSIST	-	A ⁴	S
REMOTE VEHICLE STARTER SYSTEM	A ⁴	S	S
PUSH-BUTTON START	-	A ⁴	S
REMOTE KEYLESS ENTRY Extended-range	S	S	-
E-Z Key Passive Entry System	-	A ⁴	S
UNIVERSAL HOME REMOTE Includes garage door opener, 3-channel programmable	A ⁴	S	S
RETAINED ACCESSORY POWER Power windows, audio system and sunroof remain operational after ignition is switched off for 10 minutes or until a door is opened	S	S	S
QUIETTUNING Buick-pioneered process to reduce, block and absorb noise and vibration to create a quiet interior cabin	S	S	S



	CX	CXL	CXS
ENTERTAINMENT SYSTEMS			
(UYE) AM/FM/XM ⁶ stereo, single-disc CD player with MP3 playback, auxiliary input jack, seek-and-scan, digital clock, auto-tone control, speed-compensated volume and TheftLock	S	S	S
(UYZ) AM/FM/XM ⁶ stereo, single-disc CD/DVD player with 2GB flash memory and MP3 playback. Requires available DVD Entertainment System.	-	A	A
(UYS) AM/FM/XM ⁶ stereo with Navigation ⁷ with single-disc CD/DVD player, 40GB hard drive device, MP3 playback, HDD-based voice- and touch-screen-activated navigation and Rearview Camera System. Requires Entertainment Package.	-	A	A
XM RADIO⁶ Includes 3 trial months of service	S	S	S
AUDIO Premium 7-speaker system	S	S	-
Harman Kardon 11-speaker, 384-watt system with 5.1 Matrix surround sound system	A ⁴	A ⁴	S
DVD ENTERTAINMENT SYSTEM Rear-seat dual-display DVD in the seatbacks with dual wireless headphones. Requires Entertainment Package.	-	A	A
DIGITAL AUDIO INPUT JACK For MP3 players	S	S	S
USB PORT⁸ Connectivity for various digital media	A ⁴	A ⁴	S
SAFETY AND SECURITY			
SAFETY BELTS 3-point, all seating positions	S	S	S
LATCH (Lower Anchors and Top tethers for CHildren) system for child safety seats in all rear seating positions	S	S	S
AIR BAGS⁹ Dual-stage frontal and side-impact, driver and right-front passenger with Passenger Sensing System plus head curtain side-impact, front and rear outboard seating positions	S	S	S
Rear-outboard seat-mounted thorax ⁹	A	A	A
POWER DOOR LOCKS Programmable with lockout protection	S	S	S
ONSTAR¹⁰ 6 months of Directions & Connections plan	S	S	S
THEFT-DETERRENT SYSTEMS Content theft alarm	S	S	S
Engine immobilizer, vehicle and PASS-Key III	S	S	S
SIDE BLIND ZONE ALERT Radar-equipped sensing system	-	A ⁴	A ⁴
TIRE PRESSURE MONITOR SYSTEM Does not apply to spare tire	S	S	S
STYLING AND FUNCTIONALITY			
LIGHTS Halogen headlamps with Twilight Sentinel and flash-to-pass feature	S	S	S
Xenon, adaptive, High-Intensity Discharge (HID) articulating projector lamps	-	A ⁴	A
Front halogen fog lamps with projector technology	-	S	S
Daytime running lamps, switchable	S	S	S
GLASS Solar-Ray light-tinted	S	S	S
Acoustic, laminated front-side and windshield	S	S	S
OUTSIDE MIRRORS Heated power-adjustable, manual folding	S	-	-
Heated power-adjustable, manual-folding with integrated LED turn signal indicators and ground illumination	-	S	-

	CX	CXL	CXS
STYLING AND FUNCTIONALITY (CONTINUED)			
Heated power-adjustable, manual-folding with integrated LED turn signal indicators, ground illumination, driver-side memory and auto-dimming feature	-	A ⁴	S
GRILLE Chrome waterfall	S	S	S
DOOR HANDLES With chrome insert	S	S	S
BODYSIDE MOLDINGS Bright	S	S	S
ANTENNA Integral rear window	S	S	S
LAMPS Center High-Mounted Stop Lamp (CHMSL)	S	S	S
Rear, LED taillamps	S	S	S
TIRE REPAIR KIT	A	A	A
TIRE Compact spare, 17," includes steel wheel and jack kit	S	S	S
PACKAGES			
COMFORT AND CONVENIENCE PACKAGE 1 Includes dual-zone automatic climate control, inside rearview auto-dimming mirror, Bluetooth ⁵ for phone, driver 4-way power lumbar seat adjuster, remote vehicle starter system, front passenger 8-way power seat adjuster and Universal Home Remote	A	S	S
COMFORT AND CONVENIENCE PACKAGE 2 Includes Ultrasonic Rear Parking Assist, memory settings for 2 drivers and outside heated power-adjustable mirrors with integrated turn signal indicators, ground illumination and driver-side auto-dimming feature	-	A	S
LUXURY PACKAGE Includes leather and wood grain heated steering wheel, driver and front passenger ventilated seats, perforated leather-appointed seating, power rear sunshade, E-Z Key Passive Entry System and push-button start	-	A ⁴	S
DRIVER CONFIDENCE PACKAGE Includes Side Blind Zone Alert, articulating xenon HID headlamps and HUD	-	A ⁴	A
TOURING PACKAGE Includes 19" 9-spoke painted, machined alloy wheels; P245/40R19 all-season, blackwall tires; rear H-arm suspension; chassis continuously variable real-time damping and Sport Mode Selectivity	-	-	A
ENTERTAINMENT PACKAGE Includes Harman Kardon 384-watt 11-speaker system, 5.1 Matrix surround sound system, USB port ⁸ and 120-volt 3-prong power outlet	A	A	S

¹Not available on AWD.

²Requires 3.6L V-6 engine.

³Included and only available with Touring Package.

⁴Requires available option package.

⁵Go to gm.com/bluetooth to find out which Bluetooth phones are compatible with the vehicle.

⁶XM Radio requires a subscription, sold separately by XM after the first 90 days. XM Radio U.S. service only available in the 48 contiguous United States and the District of Columbia. For more information, visit gm.xmradio.com.

⁷Map coverage available in the United States, U.S. Virgin Islands, Puerto Rico and Canada.

⁸Not compatible with all devices.

⁹Always use safety belts and the correct restraint for your child's age and size. Even in vehicles equipped with the Passenger Sensing System, children are safer when properly secured in a rear seat in the appropriate infant, child or booster seat. Never place a rear-facing infant restraint in the front seat of any vehicle equipped with a passenger air bag. See the Owner's Manual and child safety seat instructions for more safety information.

¹⁰OnStar services require vehicle electrical system (including battery), wireless service and GPS satellite signals to be available and operating for features to function properly. OnStar acts as a link to existing emergency service providers. Subscription service agreement required. Call 1-888-4ONSTAR (466-7827) or visit onstar.com for OnStar's Terms and Conditions, Privacy Policy, details and system limitations.

	CX	CXL	CXS
WHEELS			
PYX 17" high-vent steel with flush cover	S	-	-
Q04 17" machined alloy	A	-	-
PW2 18" machine-faced alloy, painted	-	S	-
Q52 18" chrome-plated	-	A	S
Q70 19" 9-spoke painted, machined alloy (requires available Touring Package)	-	-	A



SPECIFICATIONS AND CAPACITIES

	CX	CXL/CXL AWD	CXS
ENGINE TYPE	2.4L 4-cyl. VVT/ 3.6L V-6 VVT	2.4L 4-cyl. VVT/ 3.6L V-6 VVT	3.6L V-6 VVT
HORSEPOWER (HP @ RPM)	182 @ 6700/ 280 @ 6300	182 @ 6700/ 280 @ 6300	280 @ 6300
TORQUE (LB-FT @ RPM)	172 @ 4900/ 259 @ 4800	172 @ 4900/ 259 @ 4800	259 @ 4800
EPA-ESTIMATED MPG	19 city/30 hwy 17 city/27 hwy	19 city/30 hwy 16 city/26 hwy	17 city/27 hwy
FUEL TANK (APPROX)	18 gallons	18/19 gallons	18 gallons
CARGO CAPACITY¹	13.3 cu.ft.	13.3 cu.ft.	12.8 cu.ft.

S = Standard A = Available - = Not Available

¹Cargo and load capacity limited by weight and distribution.

CX, CXL, CXS

DIMENSIONS (INCHES)

WHEELBASE	111.7
OVERALL LENGTH	196.9
BODY WIDTH	73.1
OVERALL HEIGHT	59.2
FRONT TRACK WIDTH	61.7
REAR TRACK WIDTH	62.0
HEAD ROOM, FRONT	38.0
HEAD ROOM, REAR	37.3
SHOULDER ROOM, FRONT	57.4
SHOULDER ROOM, REAR	56.0
HIP ROOM, FRONT	55.2
HIP ROOM, REAR	53.9
LEG ROOM, FRONT	41.7
LEG ROOM, REAR	40.5

IMPORTANT WORDS ABOUT THIS CATALOG.

Since some information may have been updated since the time of printing (July 2010), please check with your Buick dealer for complete details. Buick reserves the right to lengthen or shorten the model year for any product for any reason, or to start and end model years at different times.

NEW-VEHICLE LIMITED WARRANTY. This warranty is for GM vehicles registered in the U.S.A. See your Buick dealer for terms and conditions.

A 5-year/100,000-mile (whichever comes first) Transferable Powertrain Limited Warranty plus Roadside Assistance and Courtesy Transportation.

Covered for 4 years/50,000 miles (whichever comes first): The complete vehicle | Cosmetic corrosion resulting from defects | Tires | Repairs made to correct any vehicle defect | Towing to your nearest Buick dealership | No charge for most warranty repairs

Covered for 6 years/100,000 miles (whichever comes first): Rust-through corrosion

AN IMPORTANT NOTE ABOUT ALTERATIONS AND WARRANTIES. Installations or alterations to the original equipment vehicle (or chassis) as distributed by General Motors are not covered by the General Motors New-Vehicle Limited Warranty. The special body company, assembler, equipment installer or upfitter is solely responsible for warranties on the body or equipment and any alterations (or any effect of the alterations) to any of the parts, components, systems or assemblies installed by GM. General Motors is not responsible for the safety or quality of design features, materials or workmanship of any alterations by such suppliers.

ASSEMBLY. Buick vehicles and their components are assembled or produced by different operating units of General Motors, its subsidiaries or suppliers to GM worldwide. We sometimes find it necessary to produce Buick vehicles with different or differently sourced components than originally scheduled. Since some options may be unavailable when your vehicle is assembled, we suggest that you verify that your vehicle includes the equipment you ordered or, if there are changes, that they are acceptable to you.

ENGINES. Buick products are equipped with engines produced by GM Powertrain or other suppliers to GM worldwide. The engines in Buick products may also be used in other GM makes and models.

TRAILERING AND OFF-ROAD DRIVING INFORMATION. Please go to buick.com and carefully review the vehicle Owner's Manual for important safety information about trailering or off-road driving in your vehicle.

A NOTE ABOUT CHILD SAFETY. Always use safety belts and the correct restraint for your child's age and size. Even in vehicles equipped with the Passenger Sensing System, children are safer when properly secured in a rear seat in the appropriate infant, child or booster seat. Never place a rear-facing infant restraint in the front seat of any vehicle equipped with a passenger air bag. See the Owner's Manual and child safety seat instructions for more safety information.



FLEET ORDERS. Some standard content may be deleted with fleet orders. See dealer for details.

ENHANCE YOUR OWNERSHIP EXPERIENCE. The Owner Center at My GMLink is an online service that helps you make the most of your vehicle ownership.

Sign up for e-mail reminders about service visits | Keep an online history of services performed | Read your vehicle Owner's Manual, warranty and more online | Receive the recall notices that apply only to your vehicle | Watch do-it-yourself videos and much more.

Register today at mygmlink.com.

GM, the GM logo, Buick, the Buick emblem, OnStar, the OnStar emblem and the slogans, emblems, vehicle model names, vehicle body designs and other marks appearing in this catalog are the trademarks and/or service marks of General Motors, its subsidiaries, affiliates or licensors. The XM name and related logos are registered trademarks of XM Satellite Radio, Inc. Facebook is a registered trademark of Facebook, Inc. iPod is a registered trademark of Apple, Inc. ©2010 General Motors. All rights reserved. Litho in U.S.A., July 2010.

To learn more about why Goodwrench service is the perfect companion for your LaCrosse, click on goodwrench.com.

