



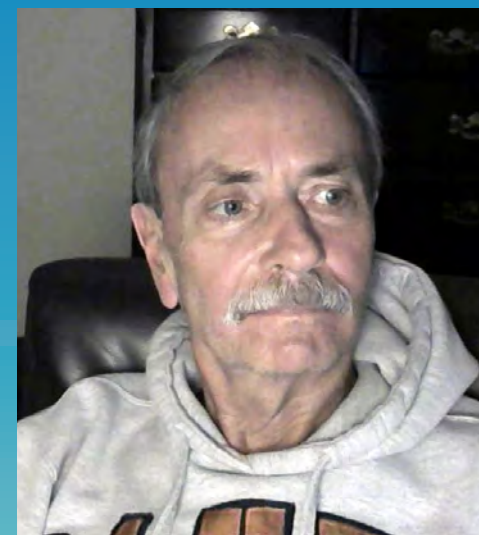
Building
**A STRONGER
TOMORROW**

Kidney disease is striking Americans at a faster rate than any other noncommunicable disease. For the 37 million people in the United States who are living with this serious condition, the American Kidney Fund is the trusted nonprofit that is fighting on all fronts—from prevention through post-transplant living. Through our programs of prevention, early detection, financial support, disease management, clinical research, innovation and advocacy, no kidney organization impacts more lives than AKF. Your donation goes further when you give to AKF: We invest 97 cents of every donated dollar in patients and programs, and we have been a top-rated, 4-Star Charity Navigator nonprofit for the past 18 years. Visit our website, [KidneyFund.org](https://www.kidneyfund.org), to learn more.

*Your support helps to
build a stronger tomorrow!*

“AKF has been there every time I needed help. I now have a new kidney and they helped make this possible. AKF has been there for me whenever I needed them so it’s only fair that I start giving back a bit. We all need help from time to time. I don’t think I will ever be able to thank them enough.”

—Tim, transplant recipient and AKF donor



You made this possible in 2019...



We provided direct financial assistance to more than **84,000** low-income dialysis and transplant patients in every state and U.S. territory.



More than **1,800** people attended our free monthly patient and caregiver webinars, and nearly **100,000** later viewed our webinars on demand.



Our award-winning website, KidneyFund.org, received over **19.4 million** pageviews by visitors seeking to learn about kidney health.



More than **1,400** dialysis patients were able to get kidney transplants with our assistance.



More than **200** patients turned to AKF for emergency financial assistance in the wake of natural disasters.



Our social media community grew to more than **170,000** patients, caregivers and renal professionals.



We provided free kidney health screenings to more than **12,000** people in **30** cities nationwide.



1,250 AKF Kidney Health Coaches across the country educated their communities about kidney disease and how to prevent it.



More than **3,300** health care professionals took AKF's 10 free, certified online courses more than **5,600** times, obtaining continuing education about caring for people with, and at risk for, kidney disease.



More than **14,000** AKF Ambassadors from all 50 states participated in our Advocacy Network.



More than **1,100** members of KidneyNation supported our mission through fundraising campaigns they designed themselves.



A LETTER FROM LAVARNE BURTON

Dear Friends,

Today, 9 out of 10 of the 37 million Americans living with kidney disease do not even know they have it. We have been battling this lack of awareness for decades, and working at the state and federal levels to address this serious and growing public health crisis.

On July 10, 2019, the federal government announced its Advancing American Kidney Health initiative. We were proud to be in the room with the President, the Health and Human Services Secretary and the Centers for Medicare & Medicaid Services Administrator, along with a group of AKF Ambassadors, for this important announcement that put kidney disease in the spotlight.

The priorities outlined by the Administration align with our own: increasing the number of kidney transplants in the United States, educating patients about their treatment options, supporting innovation in treatment, and detecting chronic kidney disease early to help prevent its progression to kidney failure.

In this annual report, you'll see the results of our efforts in these areas and more. Your support is what makes it possible for us to run the nation's largest free kidney screening program, Know Your Kidneys; to help pass legislation in states to protect living organ donors from employment and insurance discrimination; to fund innovative clinical research; to educate patients and their caregivers on how to live their best lives with kidney disease; and to fight for access to the health care that Americans living with kidney failure need to stay alive.

We fought one such battle in California, which enacted a law that would have prevented AKF from helping 3,700 low-income California dialysis and transplant patients keep their health insurance. For the first time ever, we took this fight to the courts and won a temporary reprieve, though that battle continues.

We are so grateful to everyone who supports our vital, lifesaving work. Together we are building a stronger tomorrow for all those whose lives are affected by kidney disease.

Sincerely,

LaVarne A. Burton
President and CEO

*Together we
are building
a stronger
tomorrow for all
those whose lives
are affected by
kidney disease.*



A LETTER FROM BOARD CHAIR JERRY KLEPNER

Dear Friends,

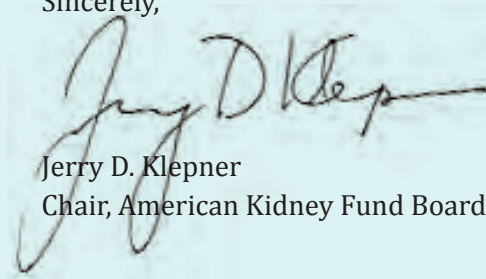
The impact of AKF's work on the lives of people living with, and at risk for, kidney disease is unmatched by any other kidney organization. I am proud that AKF can accomplish all of that while spending 97 cents of every donated dollar on patients and programs.

To our donors, that is the assurance that investing in AKF's work means your dollars are spent efficiently and effectively and deliver results. Every charity rating organization recognizes AKF's incredible stewardship of the donated dollar. In 2019, we received our 18th consecutive 4-Star rating from Charity Navigator, which reviews over 9,000 charities each year. Only a handful of organizations have received 18 consecutive 4-Star ratings, and AKF is the only health charity with this distinction.

The fight against kidney disease is complex, and it takes a multifaceted approach encompassing education, prevention, disease management, financial assistance, research and advocacy. AKF's work improves lives, and we meet people wherever they are in their journey with kidney disease, from prevention through post-transplant living. On the following pages you will meet some of the people whose lives have been transformed because of AKF...people of all ages and from all walks of life.

On behalf of the American Kidney Fund Board of Trustees, I thank you for your support and the people we serve. With your help, we are indeed fighting kidney disease on all fronts and working to change the trajectory of kidney disease in this country.

Sincerely,



Jerry D. Klepner
Chair, American Kidney Fund Board of Trustees

*With your help,
we are indeed
fighting kidney
disease on all
fronts and
working to change
the trajectory of
kidney disease in
this country.*





**PUTTING A
NATIONAL SPOTLIGHT**
on kidney disease

For nearly half a century, AKF has worked with every administration to advance public policy to improve the lives and treatment of Americans living with kidney disease.

Even though kidney disease affects 37 million Americans and is the fastest-growing noncommunicable disease, research in the field has been chronically underfunded and it rarely makes headlines. That's why we applaud the Trump Administration's Advancing American Kidney Health initiative, announced in July 2019, which helps put a long-overdue spotlight to this public health crisis.

The initiative's goals align with priorities AKF has been working on for years: keeping Americans with chronic kidney disease off dialysis longer, making significantly more transplants available, and preventing more people from ever developing kidney disease in the first place.

For example, our Know Your Kidneys free health screening program is the nation's largest, and in 2019 we screened more than 12,000 at-risk individuals in 30 cities. And we launched a Know Your Kidneys national education campaign aimed at helping people slow down the progression of kidney disease or prevent it altogether, highlighting the two leading causes of kidney disease and kidney failure: diabetes and high blood pressure.

We focus on early detection because one-third of Americans newly diagnosed with kidney failure "crash" into dialysis, with little or no pre-dialysis nephrology care. This eliminates options for tens of thousands of patients—the option for a pre-emptive transplant, and the option to train and prepare to dialyze at home.

We work tirelessly to make more transplants possible. Because of our charitable premium assistance program, 1,400 low-income dialysis patients were able to get kidney transplants in 2019—an average of more than 100 each month. And because of our advocacy, nine states passed legislation in 2019 that helps eliminate obstacles to living organ donation by protecting living organ donors from job and insurance discrimination and providing tax incentives to offset the costs of donation.

When you donate to the American Kidney Fund, you're giving money to those who financially need help. You're giving money to help empower people to have their voices heard. You're giving money to an organization that is fighting for people with kidney disease—fighting for people like me. —Alysia Yamazaki, transplant recipient



How AKF Advances American Kidney Health

Keeping Americans off dialysis longer:



>12,000

free kidney health screenings through AKF's Know Your Kidneys program



72%
elevated blood pressure



22%
elevated glucose



10%
reduced kidney function

Increasing transplants:



1,400

low-income patients transplanted with AKF's help



9 states

enacted Living Donor Protection sponsored by AKF: Arizona, Arkansas, California, Colorado, Illinois, Maryland, Kansas, Oklahoma and Oregon

Transforming the lives of children with kidney disease: Robert I. Schattner Foundation



Children living with kidney disease often face restrictions that can make them feel different, or left out, from their peers at school. Medical appointments, treatments and hospitalizations are a way of life, and simple pleasures—like summer camp—are not possible. But thanks to a generous grant to AKF’s Summer Enrichment Program from the Robert I. Schattner Foundation, 45 children got to attend Camp All-Stars, put on by Johns Hopkins Children’s Center that gave them a fun overnight camp experience while accommodating their unique medical needs.

Livestreaming for the cause: Daniel Ames and KidneyNation

New to our 2019 peer-to-peer KidneyNation fundraising efforts is streaming fundraising. Online content creators on popular streaming channels have dedicated their livestreams to raising awareness about kidney disease and collecting donations for AKF programs and services. Whether broadcasting video games, cooking demonstrations, live concerts or just chatting with their followers live, these streamers help educate supporters about kidney health and the need to help others using online entertainment and interaction.

Streamer Daniel Ames, known to his followers online as “InboundsCupid,” joined 12 other streamers for a three-day streamathon, playing Lord of the Rings online during his timeslot and asking followers to contribute to AKF.

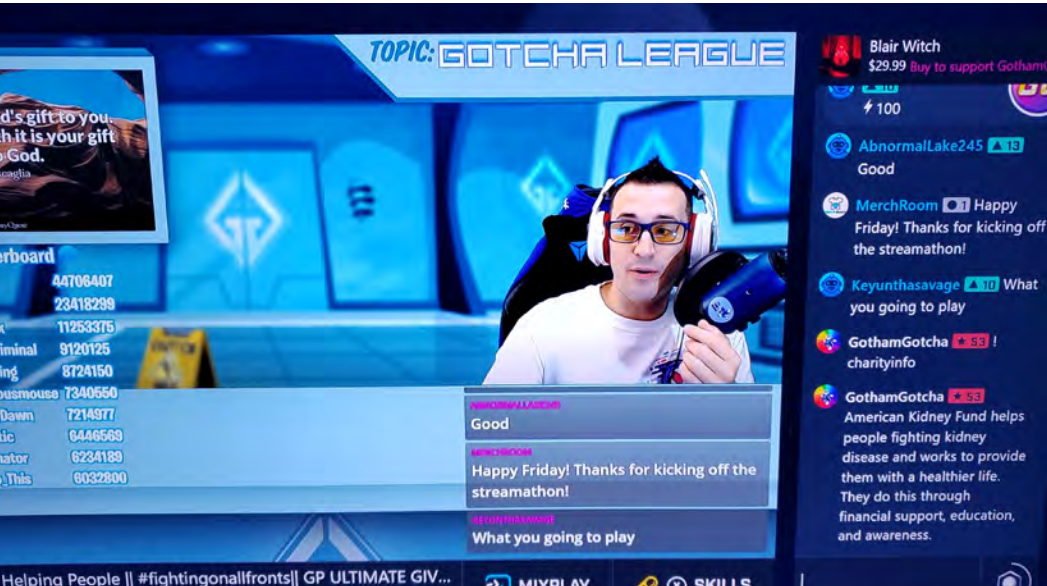


Service learning—combining kidney health education with giving: Raymond Education Campus

Changing the trajectory of kidney disease in this country means teaching all of us to appreciate—and take care of—our kidneys. Second-graders at the Raymond Education Campus in Washington, D.C., inspired by learning their teacher’s mother was on dialysis, combined learning about their kidneys with fundraising to help people living with kidney disease. For three weeks the children heard kidney health tidbits in their morning announcements and had a friendly challenge between classrooms to see who could collect the most donations for AKF. They worked with AKF to put together their learning and fundraising campaign, kicking off with an all-school assembly featuring a video about keeping your kidneys healthy, an original rap about kidneys performed by Ms. Robinson with student-led dance and singing performances.

Raymond Education Campus is truly building a stronger tomorrow, providing its students with kidney health education that will last a lifetime, and inspiring them to give back to kidney patients in need. The group was honored at AKF’s gala, The Hope Affair, with the KidneyNation Excellence Award.

“Amazing organization. Unlike others they really do help those of us living with kidney disease.”
—Becky, dialysis patient



Our KidneyNation fundraisers have climbed mountains, run races, baked cakes, held barbecues and more, all to support AKF's lifesaving programs and services. We are so grateful to the 1,100 KidneyNation fundraisers who raised \$369,000 for AKF in 2019!





PARTNERS *in the fight*

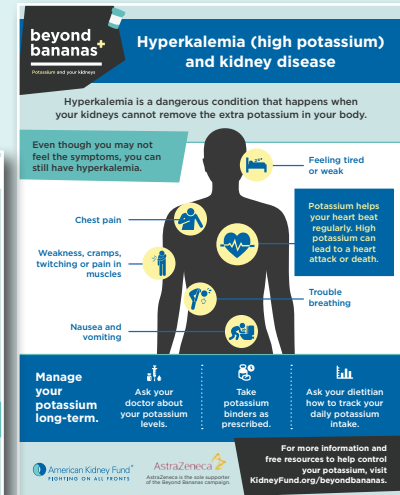
Our corporate partners make many of our educational initiatives possible through their generous support. Our award-winning campaigns empower people living with kidney disease and those at risk to live their best lives.



The danger in high potassium: AstraZeneca and Beyond Bananas™

People living with kidney disease often have to relearn basic facts about health and nutrition because much of the conventional wisdom no longer holds true for them. While many Americans don't get enough potassium, kidney patients have to carefully monitor their levels of potassium to ensure they do not have too much of the mineral in their bloodstream. Hyperkalemia is a common and serious side effects of kidney disease and kidney failure, so AKF developed the award-winning Beyond Bananas™ campaign to take on this topic in a highly engaging and effective way.

Bananas are the food most closely associated with potassium, and AKF's Beyond Bananas campaign capitalizes on that familiarity while at the same time sending the important message that controlling potassium goes beyond diet alone for kidney patients. As the sole sponsor Beyond Bananas, AstraZeneca's generous support funded the development and promotion of this important initiative.



Changing the trajectory of kidney disease: Janssen and Know Your Kidneys™

With greater awareness, the right knowledge and engaging educational tools, we believe more Americans will receive an earlier diagnosis of kidney disease and even prevent it altogether. In 2019 we launched a new campaign, *Know Your Kidneys™*, to empower individuals to fulfill their life's possibilities by preventing or slowing down the progression of chronic kidney disease.

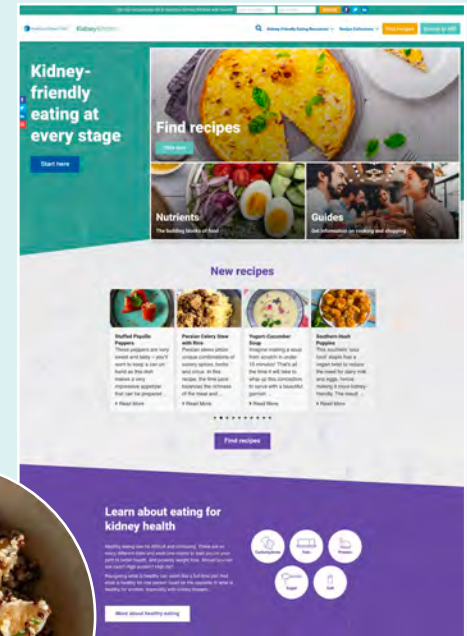
Made possible by the generous support of Janssen Inc., part of the Janssen Pharmaceutical Companies of Johnson & Johnson, *Know Your Kidneys* encourages people to know the central role of the kidneys in their overall health, and ties that to their ability to experience life's possibilities and milestones. By taking the actions necessary to diagnose and manage CKD in its early stages as well as its precursors diabetes and high blood pressure—the leading causes of kidney disease—they can look forward to experiencing life's possibilities rather than CKD robbing them of their most joyous moments.



Putting the joy back into food: Sanofi Genzyme and Kidney Kitchen

One of the most challenging aspects for many people living with kidney disease is having to change how they eat and drink. At the same time, there isn't a standard kidney diet to follow—everyone's nutritional needs are different. Our new online Kidney Kitchen™ is designed to put the joy back into food by helping patients and their caregivers find food options that they can enjoy while still meeting their individual nutritional needs.

Kidney Kitchen quickly became a leading nutrition resource, featuring nutrition information and downloadable guides, searchable recipes, recipe videos and practical tips to help support kidney patients. The project was funded through a generous grant from Sanofi-Genzyme, with additional support from Akebia Therapeutics, Inc., AstraZeneca and Satellite Healthcare.



Boosting representation of minorities in clinical trials: GSK

A persistent lack of minority patient engagement in clinical trials prevents researchers from acquiring data needed to make drugs that work best for minority patients—the very population that is often most affected by many chronic diseases, including kidney disease. A key aspect of increasing participation is getting patients to understand they can and should play an active role in all aspects of research and be proactive participants in their own care.

Through a digital resource hub, with live and recorded webinars, AKF is addressing the reservations that patients may have about clinical trials, myths and misconceptions about how data gathered during the trial will be used, whether they will get the best available care and what their rights as patients are throughout the process. The webinar and educational content on AKF's website, along with additional program materials specific for minority patient engagement in clinical trials, were made possible with support from GSK.



Empowering patients with rare diseases and their caregivers: Horizon Therapeutics and Cystinosis

Navigating life with a rare disease can be challenging, especially for young patients and their families. In recent years AKF has significantly expanded its resources on a variety of rare diseases that affect the kidneys to help address the unmet needs in these communities.

A new educational initiative to support people living with cystinosis—a rare, multisystem genetic disease that leads to kidney failure in the majority of cases—provides patients and their caregivers expanded resources including a toolkit to help empower patients to adhere to treatment, with a special focus on transplant education. The toolkit was developed in cooperation with the Cystinosis Research Network and has sections with information specifically for parents and teens.

Understanding what your child is going through

The diagnosis of kidney disease due to cystinosis can be overwhelming and even unexpected. As a parent, it's natural to feel a wide range of emotions as you adjust to this news and what it will mean for your child and your family. Your child may also feel a combination of emotions such as:

- Confused
- Overwhelmed
- Scared
- Angry
- Sad
- Frustrated

Cystinosis overview

WHAT IS CYSTINOSIS?

Cystinosis is a rare genetic condition that leads to the buildup of cystine (a naturally occurring protein) within the lysosomes of the body's cells. Individuals with cystinosis have a non-working transporter that doesn't allow for the cystine to escape from the lysosomes. The build up of cystine crystallizes and causes cell death. Cystinosis is an autosomal recessive genetic condition caused by mistakes or changes in a specific gene called CTNS.

We all have two copies of the CTNS gene, but individuals with cystinosis have two copies of the CTNS gene that are not working properly due to mutation(s) in them. Cystinosis is passed down through families.

If two parents happen to be carriers of a gene mutation, there is a 25% chance of having a child with cystinosis. A 50% chance of having a child who is a carrier for cystinosis (an affected and a 25% chance of having a child who is neither affected nor a carrier for cystinosis).

Having two faulty copies can damage different parts of the body. Talk to your child's doctor to learn more about the ways cystinosis may be affecting different parts of their body.

- BRAIN**: Visual or hearing issues
- EYES**: Sensitivity to light (photophobia) or blindness
- THYROID**: Poorly regulated thyroid (hypothyroidism), leading to slowed growth
- THROAT**: Trouble swallowing
- PANCREAS**: Diabetes
- KIDNEYS**: Fanconi syndrome (a type of kidney disease)
- MUSCLES**: Muscle weakness and decreased muscle mass (atrophy)
- BONES**: Softening or weakening of bones (osteoporosis)

Children who are too young to understand what their diagnosis of cystinosis-related kidney disease means may react differently than older children.

Horizon Therapeutics logo and American Kidney Fund logo.

FIRST30 YOUR FIRST30 CHECKLIST
Questions to consider asking during your first month of dialysis.

What to ask your SOCIAL WORKER

COPING AND SUPPORT

- How can I get help coping with all these changes?
- What mood changes should I watch out for? How will I notice them?
- Are there support groups I can join?

INSURANCE

- What all does my health insurance cover?

TRANSPORTATION

- Can I drive myself to dialysis?
- What can I do if I can't get a ride to dialysis?

LIVING EXPENSES

- Are there community resources that can help me with my living expenses?
- What number should I call if I have questions?

TRAVEL

- What do I need to do if I want to travel?
- Will my health insurance cover me if I need to go to a different dialysis clinic?
- What number should I call if I have questions?

What to ask your DIETITIAN

HEALTHY EATING

- What changes do I need to make to what I eat and drink?
- What should I look out for when eating restaurant food?
- Are there tools that can help me keep track of what I eat and drink?

COOKING

- Where can I find tasty recipes for how I need to eat?
- What seasonings can I use? Which ones should I not use?

BINDERS

- What are "binders"? How do they work?
- What kinds of binders do I need to take?
- What happens if I forget to take my binders?

KidneyFund.org/First30 | AMGEN | American Kidney Fund



Adjusting to life as a dialysis patient: Amgen and FIRST30

The first 30 days of treatment for those newly diagnosed with kidney failure require an intense lifestyle adjustment. They must make radical lifestyle adjustments and find a way to cope with the fact that there is no cure for their condition. Many people feel overwhelmed, isolated and depressed when they begin treatment.

Our FIRST30 campaign, refreshed with support from Amgen, addresses the needs of newly-diagnosed dialysis patients as they adjust to their “new normal” and transition successfully to the dialysis regimen.



SPECIAL EVENTS

help fund the fight



Regional events in New York and Boston bring together AKF supporters in the business community.



The Hope Affair, AKF's annual national gala, brings together the kidney community in a celebration of the people who inspire us in the fight against kidney disease.

Dr. Ken Sutha, the 2019 American Kidney Fund Hero of Hope, is a pediatric nephrologist, researcher, and two-time kidney transplant recipient. Dr. Sutha is also an AKF Ambassador, advocating for public policy that supports patients, funds kidney disease research, increases kidney transplants and improves care.

9-year-old kidney transplant recipient **Emme Oberbreckling's**, artwork received the most votes from the public in AKF's nationwide Calendar Kids Art Contest and is featured on the cover of AKF's 2020 calendar.

Teacher **Tracy Robinson** and her 2nd grade students at Raymond Education Campus received the KidneyNation Excellence Award. After learning their teacher's mother was a dialysis patient, the children generously worked to raise money to support AKF's programs and services that fight kidney disease as part of a service learning program about kidney health.

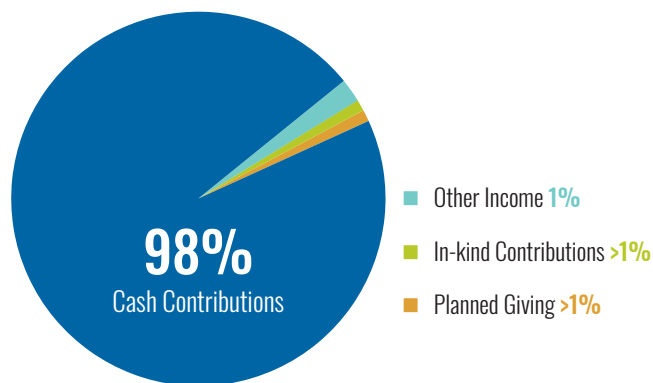
Kidney Action Days bring awareness and prevention to communities at risk.



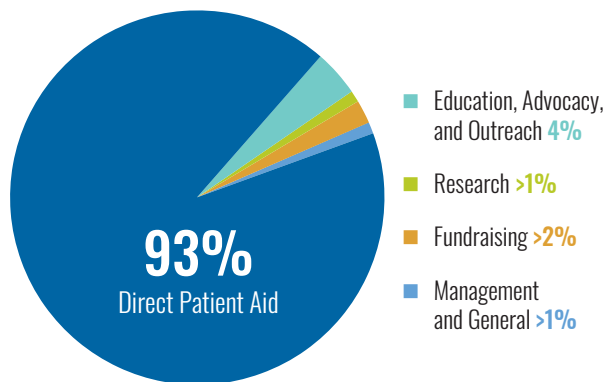
FINANCIAL HIGHLIGHTS

Fiscal year January 1, 2019, through December 31, 2019

Income



Expenses



A complete copy of the audited financial statements is available upon request from the American Kidney Fund, 11921 Rockville Pike, Suite 300, Rockville, MD, 20852, or on our website at KidneyFund.org.

Public Support and Other Revenue

Contributions	\$ 317,726,161
In-kind Contributions	611,798
Planned Giving	1,421,459
Other Income	3,365,829
Total Support and Revenue	\$ 323,125,247

Expenses

Direct Patient Aid	\$ 270,646,791
Education, Advocacy, and Outreach	11,252,960
Research	279,143
Fundraising	4,913,953
Management and General	2,422,921
Total Expenses	\$ 289,515,768
Net Surplus	\$ 33,609,479

STATEMENT OF FINANCIAL POSITION

Assets

Cash and Investments	\$ 57,709,909
Contribution Receivables	1,056,055
Furniture and Equipment, net	1,350,293
Other Assets	1,432,857
Total Assets	\$ 61,549,114

Liabilities

Accounts Payable and Accrued Expenses	\$ 3,805,930
Deferred Rent	400,692
Annuities Payable	190,826
Total Liabilities	\$ 4,397,448

Net Assets

Without Donor Restrictions—Undesignated	\$ 41,327,831
Without Donor Restrictions—Board Designated	13,476,000
With Donor Restrictions	1,027,277
Total Net Assets	\$ 55,831,108
Total Liabilities and Net Assets	\$ 60,228,556

CORPORATE PARTNERS

The following sponsors supported the programs and services of the American Kidney Fund with generous contributions of \$5,000 or more in 2019.

\$100,000–\$499,999

Akebia Therapeutics, Inc.
American Kidney Services, Inc.
American Renal Associates
Amgen USA
AstraZeneca Pharmaceuticals LP
Branstetter, Stranch & Jennings, PLLC
FMC Renal Pharmaceuticals
Hearst Corporation
Horizon Therapeutics Plc
Janssen Pharmaceuticals, Inc.
Natera
Sanofi-Genzyme
Satellite Healthcare, Inc.
U.S. Renal Care, Inc.

\$50,000–\$99,999

Any Lab Test Now
GSK
Mallinckrodt Pharmaceuticals
Relypsa, Inc.

\$25,000–\$49,999

Bargain Hunters Thrift Stores
Dialysis Clinic, Inc.
JohnHart Real Estate
Right Advisory LLC
Ropes & Gray LLP

\$5,000–\$24,999

Alexion Pharmaceuticals, Inc.
Angion Biomedica Corp
Ardelyx, Inc.
Atara Biotherapeutics
Atlantic Dialysis Management Services LLC
Biotechnology Innovation Organization (BIO)
BNY Mellon
BrightVine Solutions
Calliditas Therapeutics
Cambridge BioMarketing
ColorNet Printing & Graphics
EventEQ
Federal Street Strategies LLC
Flushing Bank
Goldman, Sachs & Co.
Grand Lodge IBPOE of W.
Hansa Biotherapeutics
Jochum Shore & Trossevin PC
JP Morgan

JPA Health Communications
Latham & Watkins LLP
Maine Nephrology Associates PA
Northleaf Capital Partners
Orases
Otsuka America Pharmaceutical, Inc.
PhRMA
Premier Benefit Plans Inc.
PROTEK Consulting
QMT Associates Inc.
Ridgewells Catering
Anonymous
Rivkin Radler LLP
RKD Group
Rockpointe Corporation
SPG Fiduciary Partners of Raymond James
SplitOak Strategies LLC
St. Paul Saints Baseball Club
SunTrust
Talaris Therapeutics
Vendorin

FOUNDATION PARTNERS

The following foundations supported the programs and services of the American Kidney Fund with generous contributions in 2019.

Agarwal Family Foundation
AmazonSmile Foundation
American Endowment Foundation
Arnold Foundation
Bahnik Foundation, Inc.
Cavanaugh Family Foundation
Community Foundation of Middle Tennessee
Craig C. Hansen Foundation
Defenbaugh Family Foundation
DeKalb School Employees Foundation, Inc.
Elno Family Foundation
Harry W. and Jo-Ann D. Wallace Charitable Foundation
Hearst Foundation
Dr. Joseph P. D'Angelo Foundation, Inc.
Joseph and Bernice Tanenbaum Foundation
Leonard C. Rosenberg Foundation
Leonard E. Zedeck Charitable Foundation
Pacific Life Foundation
Pledgeling Foundation
Rae and Aaron Alberts Foundation Fund II
Reynolds Family Foundation
Rita & Stanley Kaplan Foundation
Robert I. Schattner Foundation, Inc.
Satter Foundation
The Ina Kay Foundation
The Roger Klauber Family Foundation, Inc.
S. Rubenstein Family Foundation, Inc.
The SAD Foundation
The Sandra Atlas Bass and Edythe and Sol Atlas Fund
Sibley Family Foundation
Sikand Foundation, Inc.
The Slomo and Cindy Silvan Foundation, Inc.
Walpert Family Foundation
The Wasily Family Foundation

CIRCLE OF CHAMPIONS

Members of the Circle of Champions have made a minimum annual investment of \$250 in the American Kidney Fund. This gift represents a steadfast commitment to the patients we serve, and we are grateful for your support.

Platinum

\$10,000+

John C. Barton
Barry Black
Richard Bolte
John P. and Dorothy Butler
Cynthia M. Gilbert
Maria A. Grasso
Ken Hamilton
Joanne E. Becker Revocable Trust
Steven David Joy
Dr. Jeffrey Liss
Donald A. and Madeline L. McMullen
Arthur H. Metcalf, II, CPA
Michael and Mary Kennedy Charitable Fund
Aaron Moore
Robert Nardella
Shirley Stowe Discretionary Trust
William Smith

\$5,000–\$9,999

Harold A. Behnken
Cambridge Charitable Gift Fund
Sylvia Cart
Clayton Family Fund
Andrew Crofton
Ronald G. Friedman
Debra Harmon

Paula Haughey
John and Maria Laffin Trust
Lawrence Jordan
Michelle McCandless
Dr. Silas P. Norman
Timothy Pannell
Pattillo Family Fund
Sharon P. and James B. Riley, Jr., Esq.
Watson Rubenstein
Eric Ruskoski
Adam Ruttner
Robert L. and Margaret A. Schmerker
Heather Wier Vaught
Sheila Von Euer
Heidi L. Wagner, JD
John L. Woolf
Cathy Zoradi

\$1,000–\$4,999

Maureen Anne Abraham
David Ackerman
Louis R. Albrecht
Tonya Alexander
David F. Andersen
Christopher and Clementina Andon
Beth E. Armbruster and Stephen R. Smith, MD, MHS
Eleanor H. Ascher

Johanna Babiak
Elizabeth Baldwin
David K. Barnes
William Barnett
Tony Batarse
Donald J. and Mildred M. Beaudry
Imad Bedros
Rick Bellando
Geoffrey Belsher
Joseph Berger
Thomas and Michelene Berkey
Thomas Bibler
Laura Bieling
Marian Bilvar
Norman Bloch
Sean Bloodwell
Holly Bode
Beverly Boettcher
Louise Breber
Dr. Lawrence P. Bressler
Carol Brigian
Philip A. and Dorothy J. Brown
Karen Brustman
Richard Bullard
Roger A. Burchett
Dr. Steven Burke
LaVarne A. Burton
Lawrence P. Bush
Steve Callas
James Canavan

Jeffrey S. and Linda L. Carbiener
Arturo Carreno
Petra Chacon
Santos Chacon
Richard L. and Carol E. Chadakoff
Harvey Chaplin
Dennis Chesney
Olivia Chiu
Randolph F. Christen
Anne Cleveland
Norman and Kay Cloyes
James C. Coburn
Bill and Brenda Cole
Susan Conkey
Dr. Juan Mauricio Cuellar
Kevin P. Culhane
Jessica Damis
Dr. Ethelyn Daniel
Dr. Byron D. Danielson
Carl Davis
Robert F. Denham
Tracy Denmark and Marc Schwimmer
Dudley G. Diebold
Ernest F. Dorn, III
Mary Downing
Donald F. Dunbar
Lois W. Dyk
B. T. Eades
Gene Eldridge
Dr. Stephen C. Ellen

Kenneth A. and Carole H. Epstein
Wilmot J. and Linda J. Estes
Evlos Technology
Allan A. Fainbarg
Peter Faulisi
Carlyle W. Fay
FBI Agents Association
Mark Ferrogia
Marian S. Filan
Michael W. Flood
Judith A. Foley
Anthony F. and Elaine Forgione
Mary Fox
Maureen N. Franco
Delbert French, II
Jennifer Friedman
Dan Fukushima
Matthew Fulgieri
Francis J. Furtado
Julio Garza
Paul Gauthier
Emily Gibson
John Gittings
Leslie F. Gold
Edith Goldberg
Marc Goldman
Keith and Danee Goodman
J. Scott and Gayle Gray
Anne Green
Jennie T. Green

John and Karen Green
Jay M. and Marni Grossman
Dr. Nicholas Grund
Mindy Guzzone
John F. Hanley, CFA
Dana Harkness
William Harpel
Karen Hayes
Edward Helmer
Shawn and Louise Hendon
Seth Hettich
Nigel D. Higson and Yvonne Gaudelius
Chris Hines
Dr. Sheldon M. and Mrs. Linda F. Hirsch
Dr. Melinda Hockensmith
Aaron and Tracy Hollenberg
Craig M. and Andrea Horowitz
Jill Howell
Robert Howells
James H. Hower
Joseph Hudzik
Larry Humphrey
Kenneth Ichikawa
Robert J. and Barbara R. Iglesias
John Igoo
Mariya Irudhayanathan
Thomas Jenkins
John and Doreen E. Swinney Family Memorial Fund

Wendy Jordan
Bruce Kading
Susan L. Kanach
Robert Keith
Colin and Karen Kelly
Theodora Kelly
Noreen C. Key
Romel Khan
Dr. Suraya Khan
Jonathan Kleiman
Jerry D. Klepner
Karl Koenig
Arthur E. Kohn
Barbara Kohn
Carol W. Kortekamp
Frank W. Korzekwinski
Joseph Kretz
Gerald and Cheryl Kuhn
Camille Lamoureux
Gregory M. LaSpina
Daniel Law
Joseph N. Leo
Dr. Joe C. and Mrs. Karen L.
Leonard
Edna Lewis
Mr. and Mrs. Milton C. Lewis
Peter G. Linde
Patrick Link
Tod Lonero
Chuck Lott
Robert Loughney
John C. Lu
Barbara W. Lundberg
Jeffrey Lyman
Perry J. Lyons
Ma Charity Fund
Gregory P. Madison

Nalini Mahajan
Michael Mancusi
Rexmull F. and Doris O. Manyeto
Mark Teel Charitable Fund
Gregory Maroukian
Cheryl Marquis
Jose Martinez
Sumith Mathew
John Matone
Robert C. Maxwell
Atwood McAndrew, Jr.
Evelyn M. McCarthy
Richard J. McDowell
John McElhany
Jason McGhin
Philip McKinney
Pamela W. McNamara
Dean and Tracy McNichol
Charles Merritt
Matthew Middleman
Jason Miller
Jeffery Miller
Dr. Richard T. and Mrs. Sarah
Miller
Robert Mitchell
John B. Moriarty, Jr., Esq.
Carol A. Morris
Walt and Edie Mossberg
David T. Mott
Sasidhar Mukkamala
Maura Nicolosi, Esq.
Karin M. Niles
Daniel Nolan
Carolyn R. Oehler
Jonathan Ogilvie
David Oliverio
Philip J. O'Neill

Ricki Lipawsky Pearl
Michael R. and Gillian C. Peck
LeAnn Peterson
Reg Peterson
Lester Petracca
Rudy L. Phillips
Art Pike
Sabra Pitler
Plante Moran Trust
PNCE Health and Welfare Trust
Anthony Pogodzinski
Janice Pratt-Scott
Cheryl Purcell
Julianne Puzzo
Leslie C. Quick, III
Mary Randazzo
Terri Ray
Ashley Rebmann
Theodore Reich
Roger G. and Hannelore Reiser
John C. and Diane L. Render
Scott Resnick
Lori Ridgely
Catherine A. Ridgway
Fleurette S. Roberts
Romano Family Fund
Bridget Roots
Mr. Leon Rosenberg
Howard R. Ross
Dr. David Alan Roth
Christy and Donald J. Roy, Jr.
Marjorie Rudi
Tamara Ruggiero
Dr. Amornmarn Rumpa
Sandra Ruscetti
Michael Sapraticone
Steve Schaller

Dr. Elliot and Mrs. Alisa Scher
Jan Schilling
James Schneider
William J. Schuyler
Frank L. Seidman
Guy W. Sellars
William Shakely
Allan Shapiro
Andrew M. Shore, JD
Cynthia Smith
George Smith
Kenneth E. Smith
William B. Snyder
Audrey Solnit
Michael Spigler, MCHES
Janice Steenhoek
James Steverson
David Stokey
Stephanie A. Strickland
Marshall Strisik
Leslie D. Strupp
Travis Sunday
Jerry Sustala
Sharon Sutton
Alan Swartz
Alissa S. and Ross H. Taff
Leon H. and Carol R. Tager
Jean Tam
Patricia A. Taylor
The Gerleit Family Donor Advised
Fund
The Mocknick Family Fund
Fred Tillman
Van N. Timberlake
Dr. Steven Timmis
Sanjeev Tirath
Nita J. Tomlinson

Bethany Trice
James Troutt
Ryan Tyler
Irwin Uhr
Gloria Valdespino
Diane Van Dusen
Mike Van Horn
Pam Voisard
Carol A. Wahlenmayer
Sharon S. Waldolf
Barron S. Wall
Kevin and Martha Wall
Bruce Wallace
Reino I. Wantin
Alan Ward
Larry H. Warren
Geraldine Washington
Phyllis I. Webber
Walter Weber
JoBeth Wells
Joann Werbung
Gary W. Whalen and Sheila A.
McConnell
Cynthia B. White
Martha W. White
Warren and Gail Wick, MHSA, RN
Kathryn L. and Craig A. Willett
Walter W. Wolos, Jr.
Jim Xhema
Leju Yohannan
Theresa Zandi
Eric Zehnder
Walter and Diann Zenda
Mr. and Mrs. Marc Allen
Zimmerman
Martin Zinn, III
Beth Zubatkin
Walter R. Zydlewski

Gold \$500-\$999+

Dr. Jeffrey and Mrs. Ruth Abrams
Raymond and Suzanne Adams
Adrienne Heyward Chandler
Giving Fund
Damien Agostinelli
Larry Aldrich
David A. Alexander
Maria Alioto
Margaret Allen
Susan K. Allen
Harvey Alterman
Lucille Amicone
Howard Anker
Marguerite Arbuckle
Francis Arcaro
Marc L. Archambault
Bernadette Augustinack
Francis R. Barbarino
Barry P. and Karen S. Barbash
Carl E. Baron
Phyllis K. Barsky
Dr. Paul E. and Connie R. Bates
Kendall Beatty
Tad Beatty
Dan Beauvillia
R. Beck
Everett and Joan Bell
Danilo R. Bernardo, MD and
Imelda B. Bernardo, MD
Dale Berndt
Balbir Bhogal
Adi Bhoopathy
Jesse Billberry
Jeffery and Jo-Lea Binger
Karen Black

Thomas G. Blair
Elissa Blattman
Richard Bloch
Walter John and Vicki K. Bormann
Herman Eugene Bowdry
Gene Bower
Dana O. Box
Kathryn C. Boylan
Robert Boyle
Barbara Braddick
Anne M. Bramsen
Arlene A. Brown
Barbara Brown
Taryn Brune
Joseph W. Buchanan
Thea Buholzer
Antoinette Bush
Susan Bustamante
Rebecca R. Cabe
Kathie L. Calandra
Gary Callies
Reginald Campbell
William R. and Margaret Campbell
Ronald V. Caputo
Jack Carey
Dr. Jerry Carle
Edward Carlson, USN Ret.
Sophia Carney
Ken Carton
Margaret E. and Murphy E. Cates
Carlos Chacon
Guy Chan
Zita Chan
Dr. Aruna Chandran
Joan Chapman
Kali and Susan Chaudhuri
Samuel Chen
Clyde S. Cherry, Jr.

Dr. Robert Chevalier
Sharon Chilson
Constantine Chimples
Ben and Mary Chin
Helen O. Chong
The Honorable Donna M.
Christensen, MD
Everett M. Christensen
Roy Christiansen
Joseph Clabby
Robert H. Clark
Richard A. Clarke
Rachel Clay
Carl L. Cline
Karen Cochran
Dr. Katherine Coerver
Arthur Cohen
Arnold Cohn
Robert Colarusso
Margaret M. Cole
William Collins
Daniel O. and Deborah Conkle
Lillian J. Cooper
Paul Cooper
Jimmy Corbett
Kendra Corbin
Raymond Cote
Wendy Covelli
Timothy A. Craig
Harlan Daniels
Paul and Eileen Deloreto
Dr. Steven C. and Mrs. Sheila D.
Dennis
Daniel Desmarais
Brian DeSousa
Rachel Dillensnyder
District of Columbia Schools
Winnifred Dodd

Cathy Dougan
Michael E. Doyle
Pauline Drechsel
David Dubbell
William Duncan
Joan Dunseath
Mary DuPuis
Beth Edelstein
William Edwards
Reed and Mary Eldridge
Gabrielle Elhilow
Sean Elliott
Keith Ellis
Paul and Peggy Eoff
Matthew Esplin
Ruben Estabillo
James A. Evanson
Thomas A. Falin, Jr.
Thomas Joseph Fallon
Nicholas C. Farber
Jack M. Feldman
David Fenderson
Steven B. and Debra A. Fendrich
Shirley Fesenmeyer
Kenneth C. Fibus
Brian Flanigan
Cynthia M. Fogg
Martin Forchheimer
Dorothy L. Foster
Richard Frechette
Michael French
Julia Fulco
Gabbay Family Fund
Cathleen Garman
Stephen J. Garvey
Wayne Gehrt
Richard B. Gentry
Mary C. Gibson

Richard E. Goodman
Ram Gopalakrishnan
Dorothy Gorecki
W. R. and Crystal C. Graybeal
Bunny Green
Michael Green
Keith J. Greene
Beverly Griesert
Cynthia Griswold
Larry Grosse
Fran Guertler
Gordon Lee Gullicksen
Matthew J. Guzowski
Ralph H. Hahnfeld
Matthew J. Halprin
Ronald K. Hamburger
Gregory J. and Brenda C. Hamer,
Sr.
Susan Hammer
Thomas S. Hammerstrom
Megan Harbold
Gisela Harbs
Dorothy Harkness
Harold E. Harris, Jr.
Nicholas Harvey
Rebecca Hawkins
Marie Headley
Salem Health
Richard W. Healy
Pat Hellberg
Arlene Herzberg
Dr. Joel J. Hillhouse and Christine
M. Adler
Larry K. Hinerman
Hugh H. Hoffman
Marie Hoffman
James C. Hogan
Ahna Holloran

Matthew Hopper
Jonalyn Horsfall
Kathleen Hunt
William W. Hyatt
William Iglesias
William Ireland
Sandra Irlando
Gayle Ishima
Allan Jacobs
Sandra J. Jacobson
The Janklow Family
Nancy Janssen
Ann Jennings
Edith J. Johnston
Isabelle Kabrielian
Robert Kalogeros
Joshua Kaminstein
James Kandell
George Karnoutsos
Rajat Kaul
Richard L. and Judith M. Keating
Thomas E. Kennedy
Jeanne W. and George Kenny
Kevin Kershnik
Daniel J. Keyer
John Kibblehouse
Roderick King
Sarath Kolluru
Thomas and Dorothy Komnick
Stephen Korzeniowski
Pavlos Koudellou
Mark Kramer
Thomas Krepelka
Saeed Kronfli
Richard LaBelle
Gilbert A. Larson
Dr. Patrick and Mrs. Kaye Lawler
Thomas S. and Madalena

Lawrence
Maurice Lazenby
James B. Leary
Shuyuan Lei
Steven Lepisto
Frank V. Lester and Diana Lambdin
Carole Ruth Lindroth
Cedric Lloyd
Jeffrey A. Loos
Ernest A. and Joanna Lord
Peter Lucnik
Christoph H. Luebbering
John Lurz
John Maggio
Mary Kay Maher
Anthony Majestro
Amr R. Malik
David B. Malouf and Juliana
Taymans
George Manassis
Sandra Manger
Danielle Manning
Margaret "Bubbles" Chau and Bill
"Milo" Cummings Fund
Cynthia Marker
Emilia R. Martin
Dr. Robert L. Martin
Dr. Ileana Martinez
Orlando Martinez
Hugo E. Martz
Edith Massey
Peter and Barbara Matton
Allan Matusевич
Theodore R. Maynard
Tracy Mayne
Patricia B. McCoubrey
Myron McFarlin
Thomas McGuffin

Kevin and Julie McKinley	Carmen Nelson	Somasekhara Rebala	David Schropfer	Sandra L. Staples	Dr. Joseph A. and Mrs. Emma F. Veys
John McKissoon	Florencia C. Nochetto, MPH	Leonard Reed	Gregory S. Schuh	Donald R. and Sandra C. Stark	Amelia Vinal
Kevin and Lauren McLees	Allen J. Nodonly	Roland R. Reedy, Jr.	Lola F. Schumann	Stec Family Charitable Fund	Dennis Vo
Martin McNutt	Susan Nurdyke-Smith	Joyce Renken	Glen Schwartz	Robert L. and Krystyna M. Steiger	Judith Voet
Mario Melchor	Kathy Norris	Richard Family Charitable Fund	John Schwartz	Lantz and Cathy Stein	Theodore Vogel, Jr.
Douglas Merkobrad	James Novak	Linda Rimmer	Philip J. and Janet L. Schwarz	Dr. Robert E. Stevens	John W. Voorheis
Elaine Milem	Fred A. Oberlender	Ruth B. Rinklin and Alan Hall	Lindsay Seal	Richard C. Stewart	Del Walker
David Miller	Margaret O'Connell	Christoph Ritterson	Ralph Seline	Charles Street	Jo-Anne Wallace
Dr. Michael Miller	Don Ogle	Lisa A. Robin	William J. and Gale L. Senn	Jelle Struiksma	Matthew and Audrey Wallace
Michael M. Miller and Marita A. Powell	Michael O'Keefe	Cynthia T. Robinson	Joel G. and Elizabeth Pagel Serebransky	Lori Suhoski	Marian K. Ward
Randal Miller	Gordon and Lillian O'Neil	John R. Robinson	Serebransky Family Fund	John N. and Suzanne B. Sumrall	Joy M. Warfield
Marlene Mindel	Eileen O'Rouke	John A. Rodger, Jr.	Jennifer Sexton	Vina Tailor	Dr. David Wark
Rev. John J. Mink	Caroline C. Orvis	Annie Rogers	Ruth Shapiro	Mavis Takemoto	Mr. and Mrs. Dale A. Waters, Jr.
Barbara Minton	Margaret K. Osborn	Arlen Romary	Robert B. and Tammy Sher	Jack L. Taylor	Bradley Watson
Mr. and Mrs. Stephen Miraglia	Eliot Ostrow	Lou Rossi	Donny Shlesinger	Norman H. Taylor	Jeffrey Weber
Cynthia Mirsky	Mark Pancoast	Darrin K. Rowe	Clinton A. Short	The Richard and Marian Erskine Charitable Fund	Kathy Weber
Zareen T. Mirza	Peter J. Papisifakis	Buzz and Mary Roye	Susan Shortreed	The Sheehan Family Charitable Fund	John F. and Becky Weidenbruch
Diane Miskell	Valerie D. Pearce	Dr. Jeffrey R. Rubel	Wayne A. Siebert	Patrick Therrien	Max Wepasnick
Ron Missel	Eric and Suzanne Peck	Dr. Robert J. Rubin	Adam Siegel	William Thibodeaux	Kari West
William Mitch	Diane Perry	Gerald Rudolph	Howard Silber	Colin R. Thompson	John Westerman
Matthew W. Mitchell	Cheryl L. Peterson	Bruce M. and Betty J. Russell	Howard Silber	Gary H. Thorstens	Vernon E. Westfall
Joe A. Mitchum	Jane Peterson	Eva M. Russo	Cindy Skramstad	Daena Title	Karen Westman
John Mongiello	Paulette Petretti	Terry Russo	Amy Smith	R. Tomlinson	Krystine and Jamie Whitmore
Timothy Moore	Steven Planchard	Allan Rutherford	Luther Smith	Tommy and Julie Townsend	Robert A. Wild
Michele R. Moran	Edwin J. Popek	Dr. Dawn Sabau	Frederick Snyder	Richard Traub	Katherine Wiley
Patti Morgan	Colleen Potts	Alma Sadewater	Keith and Elaine Snyder	Marlene Trees	Richard Williams
Bryce Morris	Debra Prescott	Janis Sander	Grace Soldoveri	Edwin C. Trisler	Michael Winn
Edward A. Morris	Thomas C. Presley	Thomas Satterfield	Edward Solomon	Mr. and Mrs. Don Turlington	Erin Winterfeldt
Mary Moss	Joy D. Preston	Patsy Saye	Keith Soohoo	Mary Underwood	Christina Wold
Richard L. Muegge	Paul C. Puzzo	George N. Scandalios	Nickolas Spagnolo	Wilson Urday	Joe Wolslager
Dr. Ramani and Mrs. Carmel T. Nathan	Loretta A. Ragusa	Charlene A. Schaffer	Martha Speciale	Janet Uribe	Rebecca Wolters
Rauf Nayaz	Robert S. Raphael	Marcela S. Schaub	Stephen Spence	Robert Van Iten	Harry Yeaggy
Michael Nelskyla	William E. Rasnick	Farhana Schmidt, MA and Daniel Schmidt	Spiegel Family Trust	Karen J. Vesely	Erik Young
	Cotton Rawls, Jr.	Charles Schottenstein	Priya Sreenivasan		Mary Lou Zentner
			Morton Stamm		

Silver

\$250–\$499+

Jayne E. Abshire	Michelle Bardachowski	Lee K. Brasted	Brad and Val Chambers	Nicole R. Crim	Joseph and Kathleen Dunn
Dr. Muna Abu-Shaar	George Barnes	Kathy D. Bratt	Bianne Chan	Charles Crist	Ernestine Dunston
Jane Adams	Joanne Barzegar	Melissa Brazill	Mei Chan	Suzanne C. Crowell	Margarita Duran
Mavis M. Adams	Thomas Bateman	Dr. Eileen Brewer	Kim Chapman	Amy Cunniffe	Sanjay Dwivedi
Janie Adamson	Catherine Bauer	James Brooks	Virayot Chattrabhuti	John Cunningham	Ann Eddy
Cherie Adcock	Michael Baughan	Brent Brookstein	Ruth Chaves	Todd Curtis	Howard S. Edelstein, Esq.
Lisa Akerley	Samantha Bellando	James R. Broten	Edward Chen	Dr. Barbara F. and Mr. Wayne C. Dabb	Donald Edmundson
Toffee Albina	Elaine G. Belter	Diane M. Brown	William Cheney	Dale Daddona	Laurence Eggers
Bob Altman	Carol Beltrame	Kevin Brown	Nolan Cheng	Arik Dadez	Milton Einsteadig
Erin Altobello	Belz Foundation	Linda Brown	Evelyn Chereson	Jennifer Davies	Alejandra Elizondo
Dr. Bruce W. Altrock	Benchmade Knife Company	Ollie Brown	Noel Chesar	Merilyn M. Davis	William Elwood
Minas Amaxilatis	Hilde Benedict	Rosalyn P. Brown	Lawrence Chew	Sallie O. Davis	Dr. David Epstein
Dr. Siva and Mrs. Geetha Ambalavanan	Carole F. Bergman	William H. Browning, Jr.	Stanley Chiu	Sarah Davis	Elizabeth Evans
Catherine Amirfar	Delbert W. Bergstrom	Barbara Bryant	Heide Christensen	Arthur Dean	Romeyn Everdell and Mary R. Anderson
Dawn Amore	Dr. Hans Bergstrom	Donald Bryant	Dr. Nageswara Rao Chundura	Karen DeBenedictis	Jean Fagerstrom
Sally E. Anderson	Adam Berlin	David Buechel	Gina Citrola	James Deck	Dr. Michael Falkenhain
Alice Andors	Lieselotte Betterman	Margaret A. Buening	R. Duane Clark	Abraham Dedios	Cheri M. Farmer
Loren and Margaret M. Andreo	Janice Bienemy	Michael Burnley	William Clarkin	Sharon D. Delawder	David Feierer
Marcie L. Anthone	Eric Birnbaum	David Burns	Ruth E. Clausen	Alcides and Mabel S. Delgado	Joseph and Jamie Felock
Chip Appelbaum	Robert N. Bischoff	Dr. Edward and Mrs. Mildred Cafritz	Nora Coblence	Timothy J. and Mary P. Devanney	James Field
Fredrica Applebaum	Sheree Bisher	Patricia Cahill	James Coffman	Michele A. Devine	Robert Fike
Denise M. Archambault	Leland Blackledge	Bruce Caldwell	Mr. and Mrs. Irvin M. Cohen	Gwendolyn Dewberry	Fire Marshal Benevolent Association of Nassau County Inc.
Peter Arcidiacono	April Blair	Todd Callaway	Linda L. Cohen	David Dick	Paul Fleishman
Denise Arel	Bonnie S. Blair	Kevin Campbell	Sacha Cohen	Gina Dickey	Hanley T.D. Fong
Simin Arjmandi	Michael and Edith Blair	Carol Capps	Steve Colarito	Paul Dietche	Pat Fong
Beverly Arnstein	Marvin W. Blessing	Marilyn Carbon	Collective Goods Atlanta	Richard D. DiGeronimo	Virginia D. Forrest
Sunil Arora	Dr. Alvan Bluhm	Cindy Carpenter	Susan Collins	Jon DiPietra	Laurie Fournie
Dulce Astolfi	Howard L. Blum	Kenneth B. Carpenter	Justin Condon	Darren Doherty	Fox Foundation
Susan G. Atlas	Boccarossa Insurance, LLC	Joan Carreras	Douglas Conner	Stephen Dolman	Brian Fox
Mary Ann and William E. Bach	Bonnie L. Bole	James A. Cartelli, Esq.	Jason Cooper	Donald E. Bugh Revocable Trust	Tom Frakes
Diane Backhus	Catherine Borbone	Anthony and Bonnie Cascio	COPIC Insurance Company	James K. Donnell	Sharon M. France
Jeanne Baer	Elaine Bornstein	Charles B. Casselman	Robert M. Cordova	John P. Donovan	Joel and Marilyn Franklin
Donna Baker	Laura Borst	Thomas Castello	Sue Ann Cormack	Doris H. Douglass Revocable Living Trust	James M. Frederick
Thomas E. and Connie W. Banker	Girard E. Boudreau, Jr.	Sealy H. Cavin	Julia Cornely	Rick Dotterer	Thomas E. Fremgen
	Rick Bowling	Central Louisiana Community Foundation	Gail Cosgrove	Donna A. Drukker	Fred Friedman
	Kenneth J. and Diane Bradle	Kalpana Chakraborty	Alfred Cottrell, Jr.	Scott Dudley	
	Jacqueline Bradley		Fielding Baron and Charlotte P. Craft		
	Allen and Susan Branch				

Gary and Bonnie Friedman	James B. Halpern	Jerry J. and Marie Hornstein	Carol Anne Kalmar	Timothy S. Larson	Marian Family Foundation
Dr. Mitchell S. Friedman	Dale Hand	Alan R. and Mary K. Horsman	Govind Kamath	Stan and Beth Lashner	Allison Marsh
Paul M. and Barbara L. Frison	Jennifer Hankin	Clinton Horton, Jr.	Pamela Kaminski	Lawrence Primary School	Kathleen Martin
Michael Fritz	Leola Hansen	Margaret E. Howard	Roger Karam	Daniel Lee	Dr. Mahendra C. and Mrs. Nalini M. Maru
Pamela Fritzier	Sophia Hansen	Tony Huang	Rutika Karande	Peter Lee	Charles Massare, Jr.
Sharon Funk	Janna Hardy	Jay W. Hubsher	Kathy Kas-Amby	Spencer Lee	Kara Masters
Willis Funn	Jan Hare	Deborah Hunter	Susan Kaufman	Mark Leininger	Julie Mathers
Gary and Kathryn Gallo	Shayla Harris	Mary C. Hunter	Ronald Kay	Arlean Leland	Larry and Linda Matlack
Hope Gamper	Steven Harris	Susan Hurrelle	Terry Kazakos	Stuart Levine	Maverick Capital Foundation
John R. and Lynda Gangeme	Stuart Harris	Harry Hutzler	Keelen Tauch Charitable Fund	Daniel Levitan	Nancy McCachren
Janet Garfinkel	Dr. Phillip Harter	Patricia Hyde	Christie Keenan	William M. Levy	Joan E. McCauley
Mary Garrison	Donald Hartsfield	Linda Hyman	Elsa Keiser	Jacquelyn Liebenthal	Clark McGahee
Sharon Gartner	David Hatch	Thomas Hyndman	Terry Kelaher	Robert Lindemuth	Bill McKiver
Crystal Gay	Debbie Haynes	Roy and Sandra Ichinose	Dr. Randall T. Kelly	Joyce L. Lindler	William H. McVey
Stephen E. Gervasi	Dr. Rebecca L. Hegeman	Charles A. and Debora M. Irish, Jr.	David N. Kennedy	Neal Linebaugh	Andrew Mercker
Brittany Gevanter	Doug Heidorn	Nancy E. and James R. Irwin	Margaret Kennedy	Mark Linenschmidt	Terri Merema
Florence Gigowski	Mary Heinen	Kim Jackson	E. R. Kent	Bryan Lisser	Alvin Meury
Gurcharn K. Gill	Joseph Henderson	Shivani Jain	Steven Kilker	Gary and Marlene Littlejohn	Robert Meyerhoff
Kevin and Angela D. Gilligan	Dr. Milnes Henson	Neill Jakobe	Daniel W. and Valerie King	Dean Lively	Arlene Meyerson
William Giron	Mary Ann Herko	Ernie Janelle	Charlotte Kinnaman	Donna Loeb	David and Judy Migliore-Erdman
Brenda M. Girton-Mitchell	Patricia Hewatt	Nancy M. Janice	Sheldon M. Kline	Barbara Loll	Julie Mikkila
Janice Gitt	Charles P. and Ethel Highsmith	Brian Jenkins	Jeanette M. Klodzen	Linda Lomele	Paul Miles
Benjamin Glickman	Chloe Hill	Jerome A. Kaplan and Deena L. Kaplan Family Foundation	Per S. Kolmers	Joseph F. LoPresti	Avril Miller
Gloria Rosenzweig Revocable Trust	Frederick Hill, Jr.	Vishnu and Rakhi Jindal	James D. Koolish	Haniel Lora	John K. Miller
David H. Goldstein	Cheryl Himes	Johnson Family Charitable Lead Annuity Trust	Herbert A. Kraft	Bruce A. Loughran	Mark Miller
Stefanie Gonzalez	Kennard N. and Janis Hirsch	Amanda Johnson	Patricia Krimmel	Pamela Lowe	Gordon Millner
John W. Gordon, III	Jon and Deanne Hobbs	Clemmie Ann Johnson	Dr. John S. Kruger	Thomas A. Lunney	Peggy L. Milordi
Sandra Gray	Joy Hodges	Joanne M. Johnson	Keith Kruse	Mac Haik Ford	Brenda Milum
Robert Greenberg	Dennis Hogan	Jean O. Jordan	Kimberly Kruse	Keith Maciejewski	Vincent Minerva
Greenspring at Mount Snow HOA	Dr. James Hogan, Jr.	Joseph W. Jordan	Jeffrey Kubik	Jonathan R. and Jessica R. Madden	Michael Mocknick
Linda L. Greer	Robert Holder	Stefan Joselowitz	Alfred Kugel	Neeraj Mahindroo	John Moller
Bevan Grice	Susie Holmes	Gerard Joseph	Charles Kunzmann	Betsy Mak	David Mond
David Griffin	Richard Honda	Lorraine Jurist	Lester Lai	William Mamrack	Dr. Robert F. and Mrs. Anne D. Morrison
Donna Grubisic	Anthony Hook	Samuel G. Kahn	Luis Lainer	Anthony J. Maniaci	Cora W. and Robert R. Morrisette
Lester Carlisle Gustin	David L. Hooker	Allen Kaiden	Graeme Laing	Enid Manning	Brian Morrissey
Karin Hack	John E. and Lena Hopkins	Kenneth Kaleta	Beverly M. Lalley	John A. Maraz	Christine L. Mort
Martin F. Hale	Susan Horn		Greg Lamberton	Kenneth Mardick	
	Michael G. Horner		Gary A. Lane	Marilyn Margolis	

Richard Moss	Arebeth Pease	Maurice Reilly	Paul Savickas	Shining Star Temple	Bradford Stewart
Lorena Moulin	Susan Pedersen	Marvin Reina	Mel and Harriet Savitz	Minnie Shorter	Glenna G. Stewart
Jeffrey S. Muir	Craig Penfold	Dolores Remmick	Lisa Scarsella	Jeff Shuck	James Stillwell
Vincent Muldoon	Wei Peng	Resurrection Baptist Fellowship Church	Landon Schenck	John Sieberg	Joseph S. Stoltzfus
Thomas B. Murphy	Barbara Pennell	Julie Richardson	Beth and William Schilpp	Robert Silvestri	William Stolz
Deborah Muzzin	Ronald C. Perez	Richard T. and Melinda M. Richardson	Theodore G. and Elizabeth E. Schmidt, Jr.	Sophie Sinclair-Kemp	Gordon P. Stone, Jr.
Lauren Muzzy	Jennifer Peters	Donald and Mary Richey	Arthur C. Schneider	Tiffany Singleton	Marilyn Strothmann
Sajid Nadeem	Holly Peterson	George S. Ridenhour, Jr.	Jeffrey Schneiderman	Slovak Athletic Association	Loretta Stuart
Jamie Nakamoto	Albert W. Petraglia	William and Peggy Riemer	Louise P. Schnitzer	Loretta Smith	Samuel Su
Claude W. Naron	Thomas Petschauer	Randolph R. Rihner	Silvia Schnur	Lori Smith	Donna Sullivan
Robin K. Nelson	Philomathean Charity Club Inc.	Ring Charitable Fund	Kent Schobe	Paul M. Smith	Shirin Sundar, PhD
Charles J. and Elidia B. Newbold	Dr. Melinda Phinney	Mary Jane Robbins	William Schoenhard	Nancy Smithman	Donald Sussman
Billie D. Nichols	Irving and Sharon Picard	John Roberts	Audrey S. Schoenwald	Susan A. Snowden	Paula Swanson
Anna Nickerson	Nancy Picchiottino	Brian Robertson	Anne Schrantz	Steven Soares	Mary Ann Swayze
Richard Niemerg	Moshe Piller	Robert S. Rockwell	Leonard and Celia Schuchman	Julie Sohns	Evelyn Sweeney
James C. Noble and Lorraine Sawyer-Noble	Eli and Anita Plaxe	Norman R. and Melinda R. Rogers	Jeffrey B. Schuck	Nita G. Soref	William Sweeney
Scott Nunnally	Louis J. and Janet E. Plaza	Joseph Rosato, Esq.	William and Dorothea Schuler	Marc Sorokin	Natascha Swihart-Stoltz
Fred A. O'Bannion	Kenneth A. Plevan	Phillip Rosing	Maryann Schultz	Roberta Spada	Hope Szabla
Michael O'Brien	Richard A. Pollak	Gary Ross	Helmut Schwab	Gerson Sparer	Mavis Takemoto
Dorothea B. O'Bryne	Gordon L. Porter	Edward Rossi	Benjamin L. Schwartz	Tamara Spell	Steven Taylor
Gerard N. O'Keefe	The Porterfield Family	William D. and Erika Y. Rossiter, Jr.	Selma F. Schwartz	Douglas Spengel	Juliana W. Tchiang
Patrick O'Leary	Arthur Posey	David Rossmere	James J. Schweitz, Jr.	Eric Spett	Johan and Ursula Teeuw
Audrey G. Olson	Jill Posuniak	Stan C. Rouse	Lisa Scott	Kenneth F. Spitler	Marc Tepper
Robert Opdyke	Desiree and Timothy W. Potvin	Joseph Rubel	Jane Scriptunas	Kumar Sreenivasan	Harvey B. Tessler
David Orlando	Robert Power	Henri H. and Valerie R. Rubinstein	Stacey Segal	Robert Stafford	The Eton Station Charitable Fund
Warren D. Orloff	B. C. Prabhakar	Arthur Ryan	Larry M. Segall	Bernard Stalder	The Joel A. Luebke Charitable Giving Fund
Matt Orr	Colonel Mark W. Prentice, Ret.	Alan L. Saabye	Roderic Seibert	JoAnne G. Stamatakos	The Mintz Family Trust
Casey Otis	Jacqueline Pridgen-Pellew	Gemma Sadorra	Michael Self	State Correctional Institution - Mahanoy	The New York Community Trust
William S. Overton	Robert Proebstle	Daniel Salandro	Ibrahim Shaarawy	Joseph C. and Christie M. Steele	Larry Thill
Richard Y. Oyama	Ulric Y. Pryce	Robert E. Salinger	Shohreh Shaheedsaless	Ellen G. Stein	Ernest Thomas
Vincent Paladino	John J. Puljong	Dolores V. Sampedro	William R. Shea, Jr.	Loni Stein	Gail Thomas
Reynold F. Palaganas	Lianna Purcell	Mark Samuels	Glenda L. Shearer	William Stephan	George Thompson
Kristin Pareja	John H. Rains, IV	San Diego Smooth Dancers	Hunter Shedlock	James Stephens	William and Barbara Thompson
Anvay Pathak	William Ramos	Judy San Roman	Annette Sheldon	Gloria M. Sterkel	Robert S. and Lorraine A. Thomson
Susan Payne	Allan and Barbara Ratner	Thomas Sanderson	Paul Shelton	Colleen Stevens	George Tichy
PayPro HCS, LLC	John Ray		Helen Shepherd	Leuvel A. Stevens	John K. Timoney
Shontell Pearson	Sandra S. Ray		Dhiren S. Sheth	Campbell Stewart	Marilyn D. Title
	Sadasiva T. Reddy				

Wai To
Frances M. Tobin
Porntip Tolbert
Dr. Lynn Towbes
Mr. and Mrs. Sydney S. Traum
Jeffrey Travis
Gary Traylor
Keith Tribble
Donald Truitt
Tim S. and Leigh A. Tucker
Francene Tumminello

Linda Tuomaala
Jane Turner
Patrick Turner
Roger Tweed
Alexander Urcioli
Thomas Vales
George T. and Anna L. Van Gilder
Jehangir Varzi
Dr. Michael R. Vaughan
Rick E. Venegas
Tish Vigil

David F. Vila
Bernadett N. Vincent
Virginia Christian Riders
Dr. Thomas Vrobel
Anita Waddell
Patricia A. Wagner
Rita Wahmhoff
Karen Waitz
Paula Walck
John Wall
Ernestine Walls

Dr. Charles Wasilewski
Joseph S. Weening
Raymond Wells
Joseph Wersosky
Ben H. and Donna R. Westberry,
Jr.
Scott R. White
Daniel Whiterell
Dr. Thomas B. Wideman
Vincent Wilkinson
Lucinda Williams

Marc-Andre Wilson
Judith Withee
Dr. Walter Witkowski
Michael Wolf
Jeanne Wong
Nancy Wong
Mark Worthington
Tracey Wright
Jennifer Wroblewski
Steven Yabukov
Maureen Young

Carol Zafiroopoulos
Yaron Zaken
Rose Zaretsky
Michael Zeckel
Terrence R. Zeller
Kendall Zeswitz
Jeffrey and Linda Zissu
Frank Zuccarelli
David Zuklie
Alexander Zutkoff

HERITAGE SOCIETY

The Heritage Society recognizes friends of AKF who have either funded or planned a deferred gift, such as a bequest or life income plan, in 2019.

Louis R. Albrecht
Augusta M. Stocker Charitable Trust
Flora Jean Beam
Karen Brustman
James R. Christiansen
Thomas A. Christiansen
Juanita Coady
Coleman Family Trust
William K. Dorton
Edward J. and Lorraine E. Primet Trust
Enroth Family Charitable Trust
Estate and Trust of Frances D. O'Donnell
Estate of Albert Ebner
Estate of Anna Iovina
Estate of August W. Lentz IV
Estate of Erna E. Zorn
Estate of Eunice Hawkins Butler

Estate of Harry Kalish
Estate of Helen M. Hughes
Estate of Jason Comendador
Estate of Jennifer Elizabeth Cowman
Estate of Karl Fuchs
Estate of Lillie S. Peterson
Estate of Nancy E. Hugo
Estate of Ralph Cohen Trust
Estate of Rosemary A. Kelly
Estate of Ruth Kalish
Estate of Tom Smith
Ferris Hartman Trust
Eugene Forsyth
Malcolm Gailey
Garden State Trust Company
Frederick Good
Gordon L. Polymer Revocable Trust

Guido Walter Trust
Dale Jameson
Nelson M. Kauffmann
Sherrie Keller
Noreen C. Key
Ina G. London
Elsie R. Mannweiler
Marjorie S. Isaac 2009 Charitable Lead Annuity Trust
Mary Ann Meenan Trust
Edward J. and Yong Sun Mattson
Joyce E. McGowan
Mary K. Meeks
Nancy K. Melvin
Ava Lee Mendelson
Patricia A. Gulyas Memorial Fund
Sherwin C. Peltin

Phillip C. Quinn and Marietta L. Quinn Trust
Ralph Cohen Trust
Dyann J. Reilly
Joan M. Rutt
Sam and Lorenza DeMuro Charitable Trust
Samuel C. Cantor Charitable Trust
Sidney and Sylvia Souers Charitable Trust
Marie Simolin
Slawson Exploration Company Inc.
The Davison Family 1994 Revocable Living Trust
The Eric and Joan Norgaard Charitable Trust
Scott Bradford Van Goor
Wendy Klodt Revocable Trust
Scott Wilfong

KIDNEYNATION

Thank you to the following individuals who joined KidneyNation and raised money through DIY fundraising to support our lifesaving work. These individuals raised a minimum of \$1000 each in 2019.

Henrik Alaverdyan
Albert & Roubina
Alice Andors
Any Labs
Matt Baldwin
Elissa Blattman
Holly Bode
Pia Calle
Justin Condon

Craftworks Foundation
Cvent
Deborah Darcy
Marni Frankel
Gayane
Megan Harbold
Shayla Harris
Improved Benevolent Protective Order
of the Elks

Izabell
Marine Janikyan
Amanda Johnson
Bill Lawson
Maine Nephrology Associates
Martin McNutt
Deanna Medina
Elaine Milem
Avril & Paul Miller

Linda Ojeda
Lianna Purcell
Julianne Puzzo
Chrissy Rodriguez
Donald Roy
Tamara Ruggiero
Patricia Sakisyan
Timothy Saulter
Ben Shlesinger

Michael Spigler
Alan St. Pierre
Marshall Strisik
Team Andrea
Team Salem 5k
The Wu & Lei Family
Kendall Zeswitz



11921 Rockville Pike | Suite 300
Rockville, MD 20852
(800) 638-8299

CONNECT WITH US

 /AmericanKidneyFund

 @AKF_Advocacy

 @AmericanKidneyFund

 @KidneyFund

 @KidneyFund

KidneyFund.org