



BUILDING CAREER PATHWAYS

PRYOR PUBLIC SCHOOLS



Oklahoma Schools Advisory Council

Working Together for Quality Education

PARADIGMS

PRYOR PUBLIC SCHOOLS

MAINTAINING AN ACADEMIC FOCUS

We will create opportunities for EVERY LEARNER to grow and reach their fullest potential.

We will create curricular paths of learning that develop literacy, numeracy and provide opportunities in STEM and other curricular subjects.

Extra-curricular, co-curricular and education travel will play a role in broadening learning opportunities throughout our district.

Learners will be given a “Voice” and “Choice” in their learning as we assist them in their personal growth.

CHARACTER DEVELOPMENT

We will work to develop a “Crucible” of character and leadership to help learners develop their core values and establish a high value of personal responsibility.

As a staff, we will look for every way that we can put our learners in situations of leadership and create an environment of high expectations.

Our goal is that our learners “Own” their choices, their learning and their health and well-being.

We strive to graduate learners who will be good citizens, parents and leaders in our society.

CAREER PATHWAYS: FINDING THEIR PASSION

We will provide learners the opportunity to explore possible careers with real life experiences.

We will create relationships with business and industries that allow exposure to the working world and possible career options.

Career explorations will be a part of every grade level from PK-12.

We will work hard to assist our learners in choosing a pathway that is fulfilling to them and creates a passion for learning.

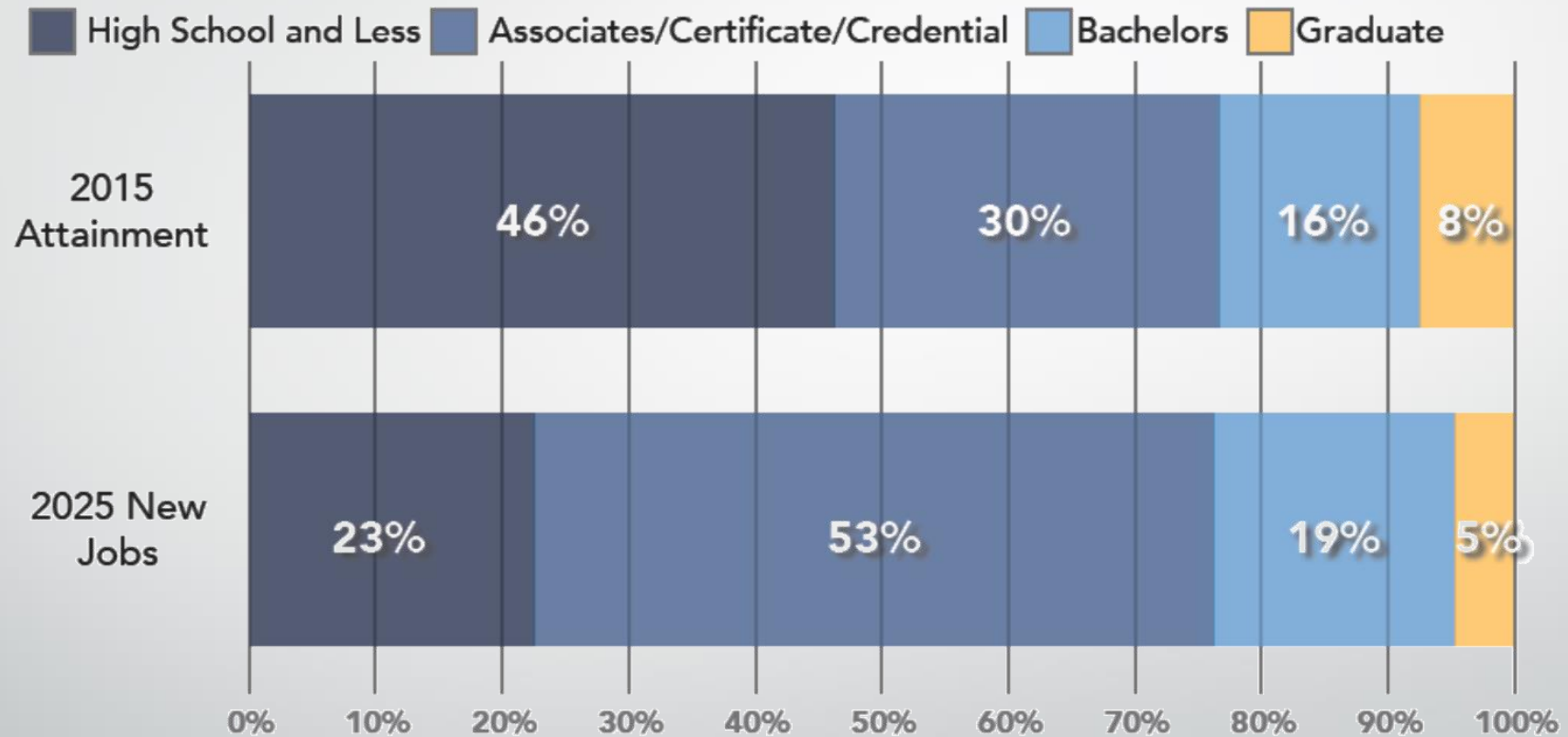
VISION

IF THEY CAN'T SEE IT...THEY CAN'T BE IT

- **Create a College & Career Plan for every student K-12**
- **Create a pedagogy to accomplish this**
- **Learners should be able to identify WHAT they want to do...and HOW they are going to get there.**
- **When they walk across the stage on Friday night, they need to know what they are going to do on Monday morning!**

According to the [Association for Career and Technical Education \(ACTE\)](#), **81 percent** of students who did not finish high school say relevant, real-world learning opportunities would have kept them in school.

OKLAHOMA'S WORKFORCE GAP



Source: OK Office of Workforce Development EMSI Q2, 2015

BASIC CAREER PATHS

CAREER AWARENESS PHASE – EARLY CHILDHOOD AGE APPROPRIATE ACTIVITIES



INTRODUCE THESE BASIC CAREER PATHS? K - 3rd : EARLY CHILDHOOD

- **Building & Fixing Path**
- **Helping Path**
- **Nature Path**
- **Business Path**
- **Creative Path**
- **Health Path**

<http://www.richlandbears.us/APlus/careercluster.JPG>

CAREER AWARENESS PHASE

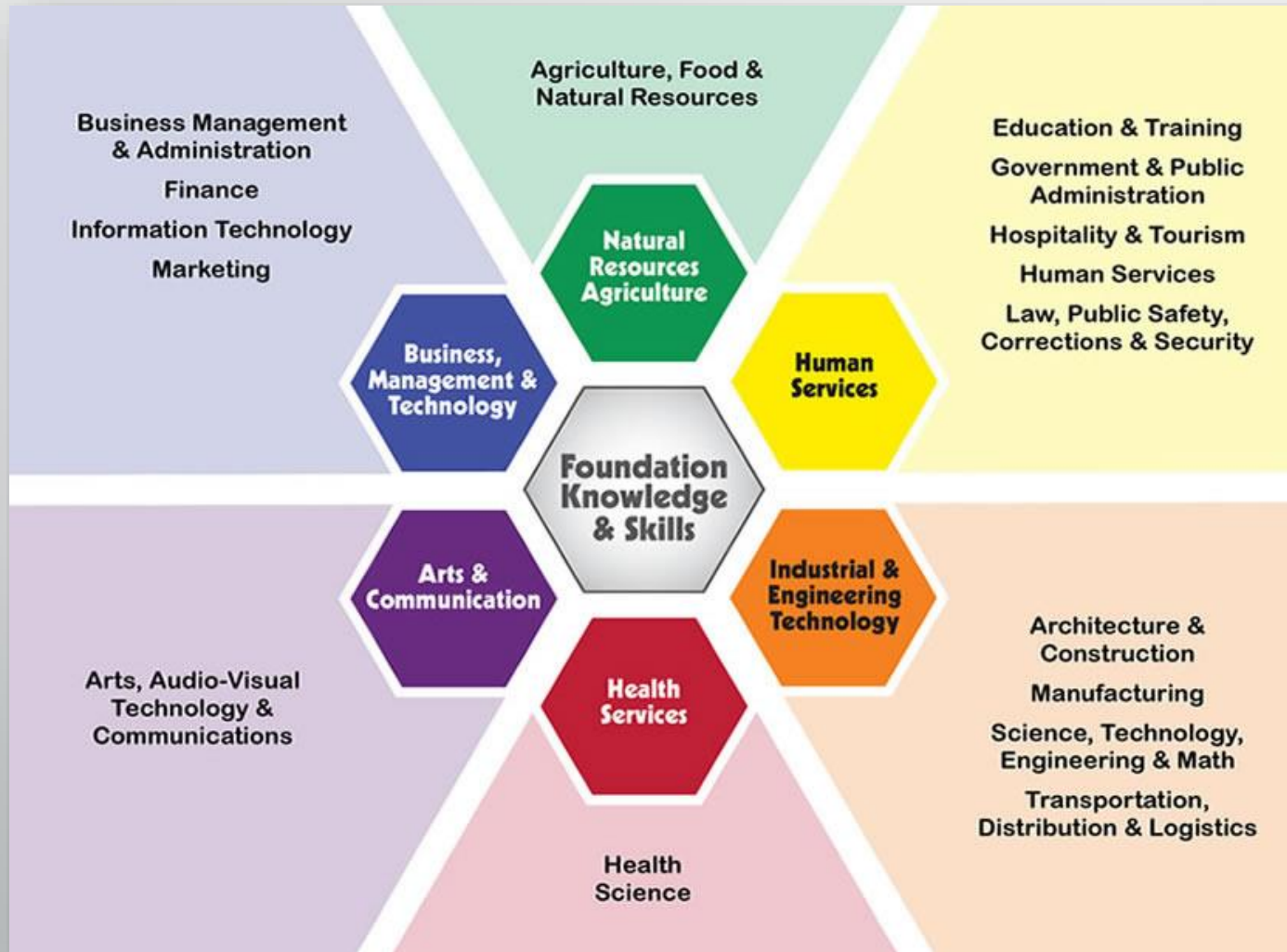
EARLY CHILDHOOD AGE APPROPRIATE ACTIVITIES

CAREER AWARENESS - PHASE I	PLANNED ACTIVITIES	ICAP ACTIVITY AREAS OF EMPHASIS
<i>KINDERGARTEN</i>	2 Activities	Career Awareness
<i>FIRST GRADE</i>	2 Activities	Career Awareness
CAREER AWARENESS - PHASE II		
<i>SECOND GRADE</i>	4 Activities	Career Awareness, Goal Setting, Academic Planning
<i>THIRD GRADE</i>	4 Activities	Career Awareness, Goal Setting, Academic Planning

- **Simple activities to create CAREER AWARENESS**
- **Have activities that build on the previous activity**
- **As we move forward begin to expand the areas of emphasis within the ICAP**
- **Checkpoint – 3rd GRADERS GO TO WORK**

16 CAREER CLUSTERS

CAREER EXPLORATION PHASE – LEARNERS BEGIN TO EXPLORE THE CAREER CLUSTERS



INTRODUCE EACH OF THE CLUSTERS IN 4th GRADE AND FURTHER EXPLORATION THROUGH THE 8th GRADE

...OUR STUDENTS WILL BENEFIT FROM A NEW CAREER EXPLORATION CLASS (7th) – A BLENDED LEARNING OPTION THROUGH FuelEducation PLATFORM

<http://ourkidzfirst.org/wp-content/uploads/2016/05/6paths-to-16clusters-1-1.jpg>

CAREER EXPLORATION PHASE

LEARNERS BEGIN TO EXPLORE CAREER CLUSTERS

CAREER EXPLORATION - PHASE I	PLANNED ACTIVITIES	ICAP ACTIVITY AREAS OF EMPHASIS
<i>FOURTH GRADE</i>	4 Activities	Career Exploration, Goal Setting, Academic Planning
<i>FIFTH GRADE</i>	4 Activities	Career Exploration, Goal Setting, Academic Planning
<i>SIXTH GRADE</i>	4 Activities	Career Exploration, Goal Setting, Academic Planning, Transition Skills
CAREER EXPLORATION - PHASE II		
<i>SEVENTH GRADE</i>	8 Activities	Career Exploration, Academic Planning, Learning Techniques, Self-Awareness, Employability Skills, Personal Financial Literacy
<i>EIGHTH GRADE</i>	8 Activities	Career Exploration, Academic Planning, Learning Techniques, Self-Awareness, Employability Skills, Personal Financial Literacy

- **Have Transition Skills as students move to new buildings**
- **Checkpoint for 6th Grade – JA BIZTOWN**
- **Continuing to expand the areas of emphasis within the ICAP as we move forward**
- **CAREER EXPLORATION CLASS – 7th Grade**
- **Checkpoint for 8th Grade – WASHINGTON D.C. TRIP**

CAREER EXPLORATION PHASE

LEARNERS BEGIN TO EXPLORE CAREER CLUSTERS

COURSE DESCRIPTION: In this course, students will learn about various careers that are available today and complete self-evaluations to determine which careers are most interesting to them. Assignments, including research and interviews, will help give students a hands-on approach to creating a plan for the future.

COURSE OBJECTIVES:

- Explain the importance of work to the individual and society
- Explain the difference between a job and a career
- Identify personal interests and how they relate to possible careers
- Identify personal strengths and weaknesses and how they relate to possible careers
- Identify multiple careers that are a part of the following career clusters:
 - Agricultural, Food & Natural Resources
 - Architecture & Construction
 - Arts, Audio-Video Technology & Communications
 - Business, Management & Administration
 - Education & Training
 - Finance
 - Government & Public Administration
 - Health Science
 - Hospitality & Tourism
 - Human Services
 - Information Technology (IT)
 - Law, Public Safety & Security
 - Manufacturing
 - Marketing, Sales & Service
 - Science, Technology, Engineering & Mathematics
 - Transportation, Distribution & Logistics
- Explain the importance of proper work etiquette
- Use proper workplace etiquette
- Participate in a work experience
- Create a career plan

COURSE OUTLINE:

- Unit 1: Career Explorations Introduction
- Unit 2: What is Work?
- Unit 3: Your Personality & Interests
- Unit 4: Work Profile
- Unit 5: Careers Clusters Overview
- Unit 6: Career Clusters 1
- Unit 7: Career Clusters 2
- Unit 8: Career Clusters 3
- Unit 9: Career Clusters 4
- Unit 10: Career Clusters 5
- Unit 11: Career Clusters 6
- Unit 12: Etiquette
- Unit 13: Interviewing & Networking
- Unit 14: Etiquette at the Job
- Unit 15: Job Shadowing
- Unit 16: What is a Career Plan?
- Unit 17: Student Career Plan

79 CAREER PATHWAYS

CAREER DEVELOPMENT PHASE – LEARNERS REQUIRED TO CHOOSE A CAREER PATHWAY



LEARNERS SHOULD CHOOSE A CAREER PATHWAY PRIOR TO THEIR FRESHMEN YEAR

THEY CAN ALWAYS CHANGE!

THEIR COURSE DECISIONS SHOULD REFLECT THEIR CHOSEN PATHWAY

<http://uqw03nohzf4b5l9s1r9ke214de-wpengine.netdna-ssl.com/wp-content/uploads/2015/08/cpflowchart.jpg>

CAREER DEVELOPMENT PHASE

LEARNERS REQUIRED TO CHOOSE A CAREER PATHWAY

CAREER DEVELOPMENT - PHASE I	PLANNED ACTIVITIES	ICAP ACTIVITY AREAS OF EMPHASIS
<i>NINTH GRADE</i>	8 Activities	Career Development, Post-Secondary Aspirations & Options, Environmental Expectations, Academic Planning, Employability Skills, Personal Financial Literacy, Transition Skills
<i>TENTH GRADE</i>	Weekly Activities in Tiger Time	Career Development, Post-Secondary Aspirations & Options, Environmental Expectations, Academic Planning, Employability Skills, Personal Financial Literacy
CAREER DEVELOPMENT - PHASE II		
<i>ELEVENTH GRADE</i>	Weekly Activities in Tiger Time	Career Development, Post-Secondary Aspirations & Options, Environmental Expectations, Academic Planning, Employability Skills, Personal Financial Literacy
<i>TWELVTH GRADE</i>	Weekly Activities in Tiger Time	Career Development, Post-Secondary Aspirations & Options, Environmental Expectations, Academic Planning, Employability Skills, Personal Financial Literacy

- **Have Transition Skills as students move to new buildings**
- **Continuing to expand the areas of emphasis within the ICAP**
- **TESTING TUESDAYS – ACT PREP PLAN begins in 9th Grade**
- **WORKING WEDNESDAYS – Interest inventories, career research, college research, soft skills training, etc.**

ACT PREPARATION

SCOPE AND SEQUENCE

Freshmen

9

- *ACT Test Preparation via Naviance (Adaptive Plan) – to be done once per week in Tiger Time*
- *Students take a Diagnostic Test to determine strengths and weaknesses*
- *Students work individually on an Adaptive Plan tailored toward the students weaknesses*

Sophomores

10

- *ACT Test Preparation via Naviance (Adaptive Plan) – to be done once per week in Tiger Time*
- *Students take Pre-ACT in the Fall as a Benchmark Test*
- *Students use ACT OpenEd Test Preparation to work on weaknesses based on ACT or Pre-ACT data.*

Juniors

11

- *Students will continue to work on ACT OpenEd platform*
- *Shelly Harris will do an ACT Prep workshop prior to Junior Test , paid for by the Cherokee Nation*
- *Junior students will take Junior State ACT Test in the spring*

Seniors

12

- *College bound students will take National Tests on their own*
- *SREB MATH 4550 – College and Career Math for student having <19 on ACT Math*
- *Seniors will take ACT Work Keys Test*

CAREER DEVELOPMENT PHASE

EVENTS CENTERED AROUND CAREER DEVELOPMENT

9



Career Exposure Week (NOV) – Freshmen (work in progress)

- Students will be introduced to several employers through a panel discussion and Q&A
- Location to be determined

10



Northeast Technology – Sophomore Showcase

- Sophomore students explore the opportunities that are available
- Sophomores choose 4 Career Tech options to explore

11



Manufacturing Day – Movie in the “Park”

- Introduce students to the opportunities available in manufacturing
- Student business tours

12



Mid America Industrial Park Spring Job Fair - Seniors

- Summer Jobs or Post-Secondary Employment
- Resume / Interview







Internships - Seniors

- Offer 3 – 2 Hour Sessions
- Elective Credit in Career Pathway

EDUCATION PAYS

PROPOSAL

	\$\$\$ / Hour	40 Year Impact
Base Pay (no experience)	varies by market	--
GPA 3.0 or greater	+ \$0.50 / hour	+ \$41,000
HS Attendance > 95%	+ \$0.50 / hour	+ \$41,000
 OSHA 10 Hour Credential	+ \$0.50 / hour	+ \$41,000
MAIP Certificate	+ \$0.50 / hour	+ \$41,000
 WorkKeys Silver	+ \$0.50 / hour	+ \$41,000
 WorkKeys Gold	+ \$1.00 / hour	+ \$82,000
 WorkKeys Platinum	+ \$1.50 / hour	+ \$123,000

experience is \$12.00/hr in your area you would start at \$14.50/hr.

OSHA 10 \$.50

Starting Pay **\$14.50**



STUDENT PLANS OF STUDY

MANUFACTURING - PRODUCTION

STUDENT PLAN OF STUDY MANUFACTURING - PRODUCTION

OVERVIEW

People with careers in production work on the shop floor making parts or assembling them. They work with machines, making or assembling electronic parts, constructing or assembling modular housing, performing welding jobs, or printing various materials.

EMPLOYMENT OUTLOOK

Some occupations in this category, such as assemblers and machine operators, are going to grow more slowly than the average as manufacturing plants continue to move toward more automation of their processes. However, those individuals with a broad range of skills or a specific skill that cannot be automated will experience job growth and find their services in demand. Welders, tool and die makers, and multiple machine operators are examples of these growth occupations. The median annual wage for production occupations is \$31,720

RELATED CAREERS

Cabinetmakers and Bench Carpenters

Computer-Controlled Machine Tool Operators, Metal and Plastic

Cutting, Punching, and Press Machine Setters, Operators, and Tenders, Metal and Plastic

Drilling and Boring Machine Tool Setters, Operators, and Tenders, Metal and Plastic

Extruding and Drawing Machine Setters, Operators, and Tenders, Metal and Plastic

Foundry Mold and Coremakers

Furniture Finishers

Grinding, Lapping, Polishing, and Buffing Machine Tool Setters, Operators, and Tenders, Metal and Plastic

Hazardous Materials Removal Workers

Heat Treating Equipment Setters, Operators, and Tenders, Metal and Plastic

Lathe and Turning Machine Tool Setters, Operators, and Tenders, Metal and Plastic

Machinists

Metal Workers and Plastic Workers, All Other

Milling and Planing Machine Setters, Operators, and Tenders, Metal and Plastic

Model Makers

Multiple Machine Tool Setters, Operators, and Tenders, Metal and Plastic

Nuclear Power Reactor Operators

Patternmakers

Recreational Vehicle Service Technicians

Rolling Machine Setters, Operators, and Tenders, Metal and Plastic

Sawing Machine Setters, Operators, and Tenders, Wood

Sheet Metal Workers

Shoe Machine Operators and Tenders

Structural Metal Fabricators and Fitters

Tool and Die Makers

Tool Grinders, Filers, and Sharpeners

Upholsterers

Welders, Cutters, Solderers, and Brazers

Welding, Soldering, and Brazing Machine Setters, Operators, and Tenders

Woodworkers

July 2017



STUDENT NOTES



AVAILABALE MENTORSHIPS

- American Castings– MAIP
- Hem-Saw– MAIP
- Your Company – MAIP
- Your Company – MAIP
- Your Company – MAIP
- Your Company – MAIP
- Your Company – MAIP

STUDENT PLANS OF STUDY

MANUFACTURING - PRODUCTION



STUDENT PLAN OF STUDY MANUFACTURING - PRODUCTION

July 2017

Student: _____ Date: _____

Parent / Guardian Signature: _____ Date: _____

GRADE LEVEL	ENGLISH (TOTAL 4 CREDITS)	HISTORY (TOTAL 3 CREDITS)	MATH (TOTAL 3 CREDITS)	SCIENCE (TOTAL 3 CREDITS)
JUNIOR HIGH	7 ENGLISH 7 ACCL ENGLISH 7	GEOGRAPHY CAREER EXP (.5)	PRE-ALGEBRA 7 MATH	SCIENCE ACCL SCIENCE
	8 ENGLISH 8 ACC ENGLISH 8	OK HISTORY (.5) GOVERNMENT (.5)	ALGEBRA I 8 PRE-ALGEBRA HS MATH READINES	PHYSICAL SCIENCE 8 SCIENCE
SECONDARY LEVEL	9 ENGLISH I	PROB OF DEMOCRACY	GEOMETRY ALGEBRA I INTERMEDIATE ALG I GEOM I ESSENTIALS	BIOLOGY I PHYSICAL SCIENCE
	10 ENGLISH II GRAM & COMP II PRE-AP ENGLISH II	US HISTORY AP US HISTORY	ALGEBRA II CTX GEOMETRY GEOMETRY ALGEBRA II PREP H ALGEBRA II	CHEMISTRY I BIOLOGY II CHEMSITRY II PHYSICAL SCIENCE CTX CHEMISTRY BOTANY / ZOO
	11 ENGLISH III GRAM & COMP III AP HON ENGLISH III	W CULTURES (PSYCH) W CULTURES (SOC) US GOVERNMENT WORLD GEOGRAPHY WORLD HISTORY CUR WORLD ISSUES PSY 1113 HIST 2483/2493	HCP MATH ANALYSIS ALGEBRA II TRIG / ANA GEOM COMPUTER SCI I	PHYSICS ANAT / PHYS CHEMISTRY I CHEMSITRY II BIOLOGY II BOTANY / ZOO
	12 ENGLISH IV GRAM & COMP IV AP HON ENGLISH IV	PSY 1113 HIST 2483/2493	HCP MATH ANALYSIS AP CALCULUS C & C MATH READY	BIOLOGY II CHEMISTRY I CHEMSITRY II ANAT / PHYS PHYSICS BOTANY / ZOOLOGY

CERTIFICATES

National Institute for Metalworking Skills (NIMS) CNC Machine Operator Certification
National Occupational Competency Testing Institute (NOCTI) Precision Machining Exam



CAREER PATHWAY

Learners will be allowed to choose a Career Pathway prior to enrolling their freshmen year. These pathways are a recommended course of study. Learners are not bound to the Career Pathway that they choose. We will be educating our learners on career options so hopefully they can make an informed decision prior to enrolling.

SREB

SOUTHERN REGIONAL EDUCATION BOARD

SREB AC COURSE 1

ADVANCED TECHNOLOGY FOR DESIGN
AND PRODUCTION

SREB AC COURSE 2

SYSTEMS OF ADVANCED MANUFACTURING

SREB AC COURSE 3

MECHATRONIC SYSTEMS FOR
ADVANCED PRODUCTION

SREB AC COURSE 4

DESIGN FOR THE PRODUCTION OF
ADVANCED PRODUCTS



Fueled CTE CAREER PATHWAY

IT & MANUFACTURING EXPLORATIONS (.5)


FUNDAMNETALS OF MANUFACTURING (.5)
MANUFACTURING SYSTEMS (.5)

MANUFACTURING PRODUCTION DEV (.5)
LEAN MANUFACTURING AND AUTOMATION (.5)

PRECISION MACHINING TECHNOLOGY (.5)
OSHA 10 - GENERAL INDSUTRY CERTIFICATE

STUDENT PLANS OF STUDY

MANUFACTURING - PRODUCTION

MANUFACTURING		
Manufacturing Production Process Development		
Production		
IT and Manufacturing Explorations*	●	●
Fundamentals of Manufacturing*	●	●
Manufacturing Systems*	●	●
Manufacturing Product Development*	●	●
Lean Manufacturing and Automation*	●	●
Manufacturing Process Development I*		●
Manufacturing Process Development II*		●
Precision Machining Technology * 	●	

fuelededucation™
the new power of learning

STUDENT PLANS OF STUDY

HEALTH SCIENCE - THERAPEUTIC SERVICES (NURSING)

STUDENT PLAN OF STUDY
HEALTH SCIENCE - THERAPEUTIC SERVICES (NURSING)

Student: _____ Date: _____
 Parent / Guardian Signature: _____ Date: _____

GRADE LEVEL	ENGLISH (TOTAL 4 CREDITS)	HISTORY (TOTAL 3 CREDITS)	MATH (TOTAL 3 CREDITS)	SCIENCE (TOTAL 3 CREDITS)
JUNIOR HIGH	7 ENGLISH 7 ACCL ENGLISH 7	GEOGRAPHY (.5) CAREER EXP (.5)	PRE-ALGEBRA 7 MATH	SCIENCE ACCL SCIENCE
	8 ENGLISH 8 ACCL ENGLISH 8	OK HISTORY (.5) GOVERNMENT (.5)	ALGEBRA I 8 PRE-ALGEBRA HS MATH READINESS	BIOLOGY I 8 SCIENCE
SECONDARY LEVEL	9 ENGLISH I	PROB OF DEMOCRACY	GEOMETRY ALGEBRA I INTERMEDIATE ALG I GEOM I ESSENTIALS	PHYSICAL SCIENCE BIOLOGY I
	10 ENGLISH II GRAM & COMP II PRE-AP ENGLISH II	US HISTORY AP US HISTORY	ALGEBRA II GEOM I ESSENTIALS GEOMETRY ALGEBRA II PREP H ALGEBRA II	CHEMISTRY I BIOLOGY II CHEMISTRY II PHYSICAL SCIENCE CTX CHEMISTRY BOTANY / ZOO
	11 ENGLISH III GRAM & COMP III AP HON ENGLISH III	W CULTURES (PSYCH) W CULTURES (SOC) US GOVERNMENT WORLD GEOGRAPHY WORLD HISTORY CUR WORLD ISSUES PSY 1113 HIST 2483/2493	HCP MATH ANALYSIS ALGEBRA II TRIG / ANA GEOM	ANAT / PHYS CHEMISTRY I CHEMISTRY II PHYSICS BIOLOGY II BOTANY / ZOO
	12 ENGLISH IV GRAM & COMP IV AP HON ENGLISH IV	PSY 1113 HIST 2483/2493	HCP MATH ANALYSIS AP CALCULUS SREB MATH READY	BIOLOGY II CHEMISTRY I CHEMISTRY II ANAT / PHYS PHYSICS BOTANY / ZOOLOGY

CERTIFICATES




CAREER PATHWAY

Learners will be allowed to choose a Career Pathway prior to enrolling their freshmen year. These pathways are a recommended course of study. Learners are not bound to the Career Pathway that they choose. We will be educating our learners on career options so hopefully they can make an informed decision prior to enrolling.



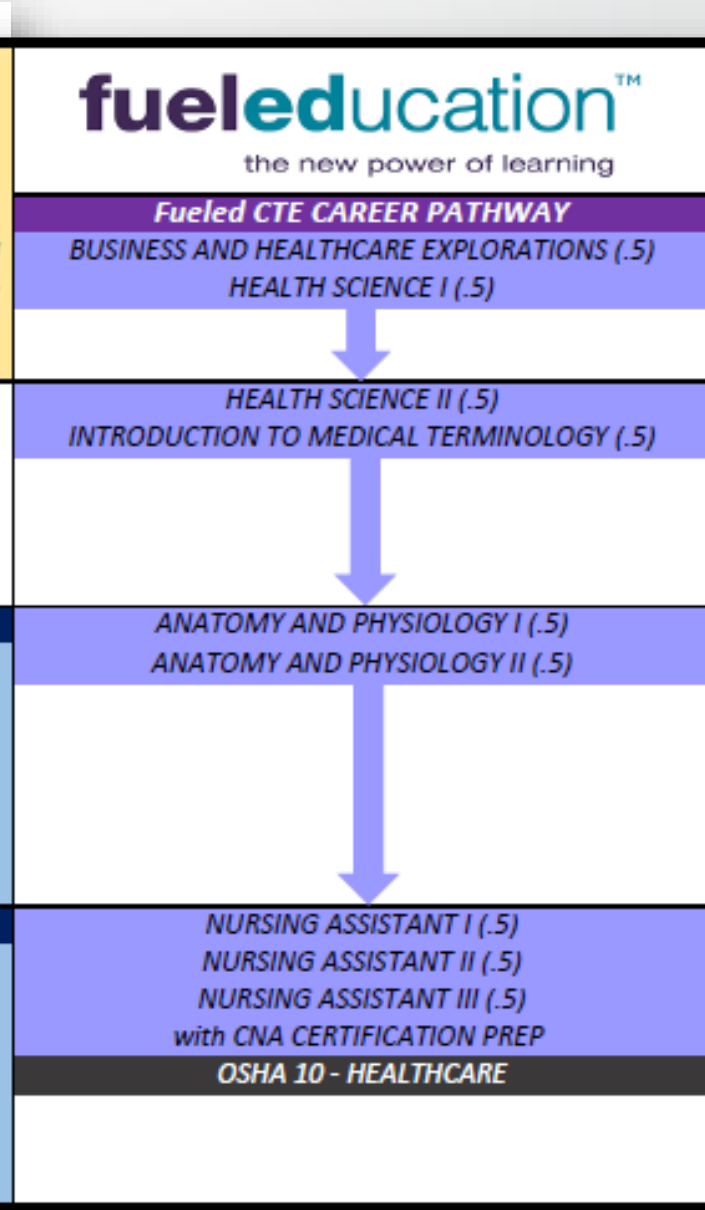
NORTHEAST TECHNOLOGY CENTER

NT - CERTIFIED NUSRES AIDE (CNA)

CORE MEDICAL TERMINOLOGY
 ANATOMY & PHYSIOLOGY
 CORE HEALTHCARE PROVIDER (CPR & FA)
 HEALTH CAREERS CORE CURRICULUM
 HOME HEALTH CARE NURSING ASST
 LONG TERM CARE AIDE
 CAPSTONE I

NT - PRE-NURSING/NURSING ASST (JUNIOR YEAR CNA PREREQUISITE)

PHARMACOLOGY
 INTRO TO FUNDAMENTALS OF NURSING
 CONCEPTS OF NURSING
 ADV ANATOMY AND PHYSIOLOGY
 PN/ADV CORE MEDICAL TERMINOLOGY
 CAPSTONE I



STUDENT PLANS OF STUDY

HEALTH SCIENCE

HEALTH SCIENCE					
Dental Assisting (N)					
Medical Assisting					
Nursing					
Pharmacy Technician					
Sports Medicine (N)					
Business and Healthcare Explorations	•	•	•	•	•
Health Science II (A)	•	•	•	•	•
Introduction to Medical Terminology (A)	•	•	•	•	•
Anatomy and Physiology I (A)	•	•	•	•	•
Anatomy and Physiology II (A)	•	•	•	•	•
Nursing Assistant I (A)			•		
Nursing Assistant II (A)			•		
Nursing Assistant III with Certified Nursing Assistant Certification Preparation (A)			•		
Medical Assistant I (A)				•	
Medical Assistant II (A)				•	
Medical Assistant III with Certified Medical Assistant Certification Preparation (A)				•	
Pharmacy Technician I (NA)		•			
Pharmacy Technician II (NA)		•			
Pharmacy Technician III with Pharmacy Technician Certification Preparation (NA)		•			
Dental Assisting I (NA)					•
Dental Assisting II (NA)					•
Dental Assisting III (NA)					•
Sports Medicine I (NA)	•				
Sports Medicine II (NA)	•				

STUDENT PLANS OF STUDY

HOSPITALITY AND TOURISM – FOOD SERVICE AND HOSPITALITY (CULINARY ARTS)

STUDENT PLAN OF STUDY
HOSPITALITY AND TOURISM - FOOD SERVICE AND HO

Student: _____
 Parent / Guardian Signature: _____


July 2017

GRADE LEVEL	ENGLISH (TOTAL 4 CREDITS)	HISTORY (TOTAL 3 CREDITS)	MATH (TOTAL 3 CREDITS)	SCIENCE (TOTAL 3 CREDITS)
JUNIOR HIGH	7 ENGLISH 7 ACCL ENGLISH 7	GEOGRAPHY CAREER EXP (.5)	PRE-ALGEBRA 7 MATH	SCIENCE ACCL SCIENCE
	8 ENGLISH 8 ACC ENGLISH 8	OK HISTORY (.5) GOVERNMENT (.5)	ALGEBRA I 8 PRE-ALGEBRA HS MATH READINES	PHYSICAL SCIENCE 8 SCIENCE
SECONDARY LEVEL	9 ENGLISH I	PROB OF DEMOCRACY	GEOMETRY ALGEBRA I INTERMEDIATE ALG I GEOM I ESSENTIALS	BIOLOGY I PHYSICAL SCIENCE
	10 ENGLISH II GRAM & COMP II PRE-AP ENGLISH II	US HISTORY AP US HISTORY	ALGEBRA II CTX GEOMETRY GEOMETRY ALGEBRA II PREP H ALGEBRA II	CHEMISTRY I BIOLOGY II CHEMISTRY II PHYSICAL SCIENCE CTX CHEMISTRY BOTANY / ZOOLOG
	11 ENGLISH III GRAM & COMP III AP HON ENGLISH III	W CULTURES (PSYCH) W CULTURES (SOC) US GOVERNMENT WORLD GEOGRAPHY WORLD HISTORY CUR WORLD ISSUES PSY 1113 HIST 2483/2493	HCP MATH ANALYSIS ALGEBRA II TRIG / ANA GEOM COMPUTER SCI I	BOTANY / ZOOLOG ANAT / PHYS CHEMISTRY I CHEMISTRY II BIOLOGY II PHYSICS
	12 ENGLISH IV GRAM & COMP IV AP HON ENGLISH IV	PSY 1113 HIST 2483/2493	HCP MATH ANALYSIS AP CALCULUS C & C MATH READY	BIOLOGY II CHEMISTRY I CHEMISTRY II ANAT / PHYS PHYSICS BOTANY / ZOOLOG


CERTIFICATES

CAREER PATHWAY

Learners will be allowed to choose a Career Pathway prior to enrolling their freshmen year.



the new power of learning



NORTHEAST TECHNOLOGY CENTER

RESTAURANT COOK - JR YEAR SEMESTER I

CULINARY BASIC SKILLS
STOCKS, SOUPS & SALADS
CULINARY ARTS INTERNSHIPS - IE

RESTAURANT COOK - JR YEAR SEMESTER II

RESTAURANT COMMUNICATION
RESTAURANT MANAGEMENT
FRUITS & VEGETABLES
WORKING IN A RESTAURANT
GRAINS, LEGUMES & PASTA
CULINARY ARTS INTERNSHIPS - IF

FOOD SERVICE MGMT ASST - SR YEAR SEMESTER I

BREAKFAST FOODS
BASIC NUTRITION
HOSPITALITY BUSINESS MANAGEMENT
INTRODUCTION TO GARDEN MANAGER
MEAT & POULTRY

FOOD SERVICE MGMT ASST - SR YEAR SEMESTER II

MENUS
DESSERTS
YEAST BREADS, ROLLS & PASTRIES
ENVIRONMENTAL SUSTAINABILITY IN FS
INTERNATIONAL CUISINES

SOPHOMORE YEAR THROUGH Fueled

INTRODUCTION TO HOSPITALITY & TOURISM
INTRODUCTION TO CULINARY ARTS

NOTICE

Students that are interested in attending NTC Culinary Arts Program should use the FuelEducation Sophomore year as a resume builder due to the limited number of accepted students into the NTC Program.

FOOD PRODUCTION I
FOOD PRODUCTION II

NUTRITION AND WELLNESS
RESTAURANT MANAGEMENT

STUDENT PLANS OF STUDY

HOSPITALITY AND TOURISM – FOOD SERVICE AND HOSPITALITY (CULINARY ARTS)

HOSPITALITY AND TOURISM			
Food Science and Nutrition			
Food Service and Hospitality			
Travel and Tourism			
Nutrition and Wellness*			•
Skills for Health*			•
Introduction to Culinary Arts* A		•	•
Food Production I* NA		•	•
Food Production II* NA		•	•
Restaurant Management* NA		•	
Introduction to Hospitality and Tourism* A			
Entrepreneurship I*	•		
Entrepreneurship II*	•		
Marketing I*	•		
Advertising and Sales Promotion* NA	•		
International Business* A	•		

fueled education courses

Forensic Science

Criminology

Java Programming I & II

Biotechnology

Health Science I & II

Restaurant Management

Entrepreneurship I & II

AP Macroeconomics

International Business

Astronomy

Medical Terminology

Algebra I - Credit Recovery

Wildlife and Natural Resource Management I & II

Creative Writing

Audio Engineering

Sports Medicine I & II

Law & Order / Legal Studies

Lean Manufacturing & Automation

MORE STUDENT PLANS OF STUDY



STUDENT PLAN OF STUDY HEALTH SCIENCE - DIAGNOSTIC SERVICES (SPORTS MEDICINE)

Student: _____ Date: _____
Parent / Guardian Signature: _____ Date: _____
Advisor Signature: _____ Date: _____

GRADE LEVEL	ENGLISH (TOTAL 4 CREDITS)	HISTORY (TOTAL 3 CREDITS)	MATH (TOTAL 3 CREDITS)	SCIENCE (TOTAL 3 CREDITS)	HEALTH SCIENCE - THERAPEUTIC
JUNIOR HIGH	ENGLISH 7 ACCL ENGLISH 7	GEOGRAPHY CAREER EXP (5)	PRE-ALGEBRA 7 MATH	SCIENCE ACCL SCIENCE	The 7th grade year, learners will complete the Career Explorations Class, Business, Manufacturing, and IT. They will also prepare for their 8th grade Washington DC Trip. Students should choose a CAREER PATHWAY prior to enrolling in their freshman year.
8	ENGLISH 8 ACC ENGLISH 8	OK HISTORY (5) GOVERNMENT (5)	ALGEBRA I 8 PRE-ALGEBRA HS MATH READINESS	BIOLOGY I 8 SCIENCE	CAREER PATHWAY
9	ENGLISH I	PROB OF DEMOCRACY	GEOMETRY ALGEBRA I INTERMEDIATE ALG I GEOM I ESSENTIALS	PHYSICAL SCIENCE BIOLOGY I	Learners will be allowed to choose a Career Pathway prior to enrolling their freshman year. These pathways are a recommended course of study. Learners are not bound to the Career Pathway that they choose. We will be educating our learners on career options so hopefully they can make an informed decision prior to enrolling.
10	ENGLISH II GRAM & COMP II PRE-AP ENGLISH II	US HISTORY AP US HISTORY	ALGEBRA II GEOM I ESSENTIALS GEOMETRY ALGEBRA II PREP H ALGEBRA II	CHEMISTRY I BIOLOGY II CHEMISTRY II PHYSICAL SCIENCE CTX CHEMISTRY BOTANY / ZOO	CARE AND PREVENTION OF ATHLETIC INJURIES SUMMER CLASS OFFERED OVER A 2 DAY PERIOD
11	ENGLISH III GRAM & COMP III AP HON ENGLISH III	W CULTURES (PSYCH) W CULTURES (SOC) US GOVERNMENT WORLD GEOGRAPHY WORLD HISTORY CUR WORLD ISSUES	HCP MATH ANALYSIS ALGEBRA II TRIG / ANA GEOM	ANAT / PHYS CHEMISTRY I CHEMISTRY II PHYSICS BIOLOGY II BOTANY / ZOO	
12	ENGLISH IV GRAM & COMP IV AP HON ENGLISH IV	COMP 1113/1213 PSY 1113 HIST 2483/2493	MATH 1513 HCP MATH ANALYSIS	BIOL 1114 BIOLOGY II	

CERTIFICATES
Care and Prevention of Athletic Injuries



STUDENT PLAN OF STUDY BUSINESS, MANAGEMENT & ADMINISTRATION - BUSINESS INFORMATION MANAGEMENT (ACCOUNTING)

Student: _____ Date: _____
Parent / Guardian Signature: _____ Date: _____
Advisor Signature: _____ Date: _____

GRADE LEVEL	ENGLISH (TOTAL 4 CREDITS)	HISTORY (TOTAL 3 CREDITS)	MATH (TOTAL 3 CREDITS)	SCIENCE (TOTAL 3 CREDITS)	BUSINESS, MANAGEMENT & ADMINISTRATION - BUSINESS INFORMATION MANAGEMENT
JUNIOR HIGH	ENGLISH 7 ACCL ENGLISH 7	GEOGRAPHY CAREER EXP (5)	PRE-ALGEBRA 7 MATH	SCIENCE ACCL SCIENCE	The 7th grade year, learners will complete the Career Explorations Class, Business, Manufacturing, and IT. They will also prepare for their 8th grade Washington DC Trip. Students should choose a CAREER PATHWAY prior to enrolling in their freshman year.
8	ENGLISH 8 ACC ENGLISH 8	OK HISTORY (5) GOVERNMENT (5)	ALGEBRA I 8 PRE-ALGEBRA HS MATH READINESS	PHYSICAL SCIENCE 8 SCIENCE	CAREER PATHWAY
9	ENGLISH I	PROB OF DEMOCRACY	GEOMETRY ALGEBRA I INTERMEDIATE ALG I GEOM I ESSENTIALS	BIOLOGY I PHYSICAL SCIENCE	Learners will be allowed to choose a Career Pathway prior to enrolling their freshman year. These pathways are a recommended course of study. Learners are not bound to the Career Pathway that they choose. We will be educating our learners on career options so hopefully they can make an informed decision prior to enrolling.
10	ENGLISH II GRAM & COMP II PRE-AP ENGLISH II	US HISTORY AP US HISTORY	ALGEBRA II GEOM I ESSENTIALS GEOMETRY ALGEBRA II PREP H ALGEBRA II	CHEMISTRY I BIOLOGY II CHEMISTRY II PHYSICAL SCIENCE CTX CHEMISTRY BOTANY / ZOO	
11	ENGLISH III GRAM & COMP III AP HON ENGLISH III	W CULTURES (PSYCH) W CULTURES (SOC) US GOVERNMENT WORLD GEOGRAPHY WORLD HISTORY CUR WORLD ISSUES	HCP MATH ANALYSIS ALGEBRA II TRIG / ANA GEOM COMPUTER SCI I	ANAT / PHYS CHEMISTRY I CHEMISTRY II PHYSICS BIOLOGY II BOTANY / ZOO	NT - ADMINISTRATIVE ASSISTANT FUNDAMENTALS OF TECHNOLOGY FUNDAMENTALS OF ADMINISTRATIVE TECH
12	ENGLISH IV GRAM & COMP IV AP HON ENGLISH IV	COMP 1113/1213 PSY 1113 HIST 2483/2493	MATH 1513 HCP MATH ANALYSIS AP CALCULUS C & C MATH READY	BIOL 1114 BIOLOGY II	ACCOUNTING I COMPUTERIZED ACCOUNTING NT - EXECUTIVE ADMINISTRATIVE ASSISTANT ACCOUNTING II PAYROLL ACCOUNTING ADMINISTRATIVE TECHNOLOGIES II CAREER MAJOR CAPSTONE

CERTIFICATES
Microsoft Excel Office Specialist



STUDENTS FOLLOWING SUGGESTED COURSE PATH CAN COMPLETE THE

- 19 COLLEGE COURSE CREDITS - CAN BE TAKEN CONCURRENTLY DURING:
 - 3 FRESHMEN COMP I
 - 3 US HIST FROM 1877
 - 3 FRESHMEN COMP II
 - 3 US HIST TO 1877
 - 3 PSYCHOLOGY 1113
 - 3 COLLEGE ALGEBRA
 - 4 BIOLOGY 1114
- FOLLOW A CAREER PATH AS THE STUDENT CHOOSES
 - 1 - ADVANCED CAREER OPTION FOLLOWING SREB IET PROGRAM
 - 2 - GENERAL CAREER OPTION FOLLOWING FuelEd Program
 - 3 - CAREER OPTION FOLLOWING Northeast Tech



STUDENT PLAN OF STUDY AGRICULTURE, FOOD, & NATURAL RESOURCES - AGRICULTURE MECH

Student: _____ Date: _____
Parent / Guardian Signature: _____ Date: _____
Advisor Signature: _____ Date: _____

GRADE LEVEL	ENGLISH (TOTAL 4 CREDITS)	HISTORY (TOTAL 3 CREDITS)	MATH (TOTAL 3 CREDITS)	SCIENCE (TOTAL 3 CREDITS)	AGRICULTURE, FOOD, & NATURAL RESOURCES - AGRICULTURE MECH
JUNIOR HIGH	ENGLISH 7 ACCL ENGLISH 7	GEOGRAPHY CAREER EXP (5)	PRE-ALGEBRA 7 MATH	SCIENCE ACCL SCIENCE	
8	ENGLISH 8 ACC ENGLISH 8	OK HISTORY (5) GOVERNMENT (5)	ALGEBRA I 8 PRE-ALGEBRA HS MATH READINESS	PHYSICAL SCIENCE 8 SCIENCE	
9	ENGLISH I	PROB OF DEMOCRACY	GEOMETRY ALGEBRA I	BIOLOGY I PHYSICAL SCIENCE	
10	ENGLISH II GRAM & COMP II PRE-AP ENGLISH II	US HISTORY AP US HISTORY	ALGEBRA II CTX GEOMETRY GEOMETRY ALGEBRA II PREP H ALGEBRA II	CHEMISTRY I BIOLOGY II CHEMISTRY II PHYSICAL SCIENCE CTX CHEMISTRY BOTANY / ZOOLOGY	



STUDENT PLAN OF STUDY MANUFACTURING - MANUFACTURING PRODUCTION PROCESS DEVELOPMENT

Student: _____ Date: _____
Parent / Guardian Signature: _____ Date: _____
Advisor Signature: _____ Date: _____

GRADE LEVEL	ENGLISH (TOTAL 4 CREDITS)	HISTORY (TOTAL 3 CREDITS)	MATH (TOTAL 3 CREDITS)	SCIENCE (TOTAL 3 CREDITS)	MANUFACTURING - MANUFACTURING PRODUCTION PROCESS DEVELOPMENT
JUNIOR HIGH	ENGLISH 7 ACCL ENGLISH 7	GEOGRAPHY CAREER EXP (5)	PRE-ALGEBRA 7 MATH	SCIENCE ACCL SCIENCE	The 7th grade year, learners will complete the Career Explorations Class, an introduction to Health Services, Business, Manufacturing, and IT. They will also prepare for their 8th Grade Washington DC Trip. Students should choose a CAREER PATHWAY prior to enrolling into their freshman year.
8	ENGLISH 8 ACC ENGLISH 8	OK HISTORY (5) GOVERNMENT (5)	ALGEBRA I 8 PRE-ALGEBRA HS MATH READINESS	BIOLOGY I 8 SCIENCE	CAREER PATHWAY
9	ENGLISH I	PROB OF DEMOCRACY	GEOMETRY ALGEBRA I INTERMEDIATE ALG I GEOM I ESSENTIALS	PHYSICAL SCIENCE BIOLOGY I	Learners will be allowed to choose a Career Pathway prior to enrolling their freshman year. These pathways are a recommended course of study. Learners are not bound to the Career Pathway that they choose. We will be educating our learners on career options so hopefully they can make an informed decision prior to enrolling.
10	ENGLISH II GRAM & COMP II PRE-AP ENGLISH II	US HISTORY AP US HISTORY	ALGEBRA II CTX GEOMETRY GEOMETRY ALGEBRA II PREP H ALGEBRA II	CHEMISTRY I BIOLOGY II CHEMISTRY II PHYSICAL SCIENCE CTX CHEMISTRY BOTANY / ZOO	SREB SOUTHERN REGIONAL EDUCATION BOARD
11	ENGLISH III GRAM & COMP III AP HON ENGLISH III	W CULTURES (PSYCH) W CULTURES (SOC) US GOVERNMENT WORLD GEOGRAPHY WORLD HISTORY CUR WORLD ISSUES	HCP MATH ANALYSIS ALGEBRA II TRIG / ANA GEOM	ANAT / PHYS CHEMISTRY I CHEMISTRY II PHYSICS BIOLOGY II BOTANY / ZOO	ADVANCED TECHNOLOGY FOR DESIGN AND PRODUCTION SREB AC COURSE 2 SYSTEMS OF ADVANCED MANUFACTURING
12	ENGLISH IV GRAM & COMP IV AP HON ENGLISH IV	COMP 1113/1213 PSY 1113 HIST 2483/2493	MATH 1513 HCP MATH ANALYSIS AP CALCULUS	BIOL 1114 BIOLOGY II	SREB AC COURSE 3 MECHANOTIC SYSTEMS FOR ADVANCED MANUFACTURING SREB AC COURSE 4 DESIGN FOR THE PRODUCTION OF ADVANCED PRODUCTS

CERTIFICATES

- Manufacturing Skill Standards Council (MSSC) Certified Production Technician Certification
- National Occupational Competency Testing Institute (NOCTI) Manufacturing Technology Exam



MANUFACTURING SKILL STANDARDS COUNCIL



STUDENTS FOLLOWING SUGGESTED COURSE PATH CAN COMPLETE THE FOLLOWING

- 19 COLLEGE COURSE CREDITS
- 3 FRESHMEN COMP I
- 3 US HIST TO 1877
- 3 COLLEGE ALGEBRA
- 3 FRESHMEN COMP II
- 3 US HIST FROM 1877
- 4 BIOLOGY 1114
- 3 PSYCHOLOGY 1113
- FOLLOW A CAREER PATH AS THE STUDENT CHOOSES
 - 1 - ADVANCED CAREER OPTION FOLLOWING SREB IET PROGRAM
 - 2 - GENERAL CAREER OPTION FOLLOWING FuelEd Program
 - 3 - CAREER OPTION FOLLOWING NTC CareerTech



STUDENT PLAN OF STUDY HOSPITALITY AND TOURISM - TRAVEL AND TOURISM

Student: _____ Date: _____
Parent / Guardian Signature: _____ Date: _____
Advisor Signature: _____ Date: _____

GRADE LEVEL	ENGLISH (TOTAL 4 CREDITS)	HISTORY (TOTAL 3 CREDITS)	MATH (TOTAL 3 CREDITS)	SCIENCE (TOTAL 3 CREDITS)	HOSPITALITY AND TOURISM - TRAVEL AND TOURISM
JUNIOR HIGH	ENGLISH 7 ACCL ENGLISH 7	GEOGRAPHY CAREER EXP (5)	PRE-ALGEBRA 7 MATH	SCIENCE ACCL SCIENCE	The 7th grade year, learners will complete the Career Explorations Class, an introduction to Health Services, Business, Manufacturing, and IT. They will also prepare for their 8th Grade Washington DC Trip. Students should choose a CAREER PATHWAY prior to enrolling into their freshman year.
8	ENGLISH 8 ACC ENGLISH 8	OK HISTORY (5) GOVERNMENT (5)	ALGEBRA I 8 PRE-ALGEBRA HS MATH READINESS	PHYSICAL SCIENCE 8 SCIENCE	CAREER PATHWAY
9	ENGLISH I	PROB OF DEMOCRACY	GEOMETRY ALGEBRA I INTERMEDIATE ALG I GEOM I ESSENTIALS	BIOLOGY I PHYSICAL SCIENCE	Learners will be allowed to choose a Career Pathway prior to enrolling their freshman year.
10	ENGLISH II GRAM & COMP II PRE-AP ENGLISH II	US HISTORY AP US HISTORY	ALGEBRA II CTX GEOMETRY GEOMETRY ALGEBRA II PREP H ALGEBRA II	CHEMISTRY I BIOLOGY II CHEMISTRY II PHYSICAL SCIENCE CTX CHEMISTRY BOTANY / ZOOLOGY	fuelEducation the new power of learning FuelEd CTE CAREER PATHWAY
11	ENGLISH III GRAM & COMP III AP HON ENGLISH III	W CULTURES (PSYCH) W CULTURES (SOC) US GOVERNMENT WORLD GEOGRAPHY WORLD HISTORY CUR WORLD ISSUES	HCP MATH ANALYSIS ALGEBRA II TRIG / ANA GEOM	ANAT / PHYS CHEMISTRY I CHEMISTRY II PHYSICS BIOLOGY II BOTANY / ZOO	FCCLA FACCS BASIC (5) INTRODUCTION TO HOSPITALITY & TOURISM
12	ENGLISH IV GRAM & COMP IV AP HON ENGLISH IV	COMP 1113/1213 PSY 1113 HIST 2483/2493	MATH 1513 HCP MATH ANALYSIS	BIOL 1114 BIOLOGY II	INTRODUCTION TO HOSPITALITY & TOURISM MARKETING I ENTREPRENEURSHIP I ENTREPRENEURSHIP II ADVERTISING & SALES PROMOTION INTERNATIONAL BUSINESS

STUDENTS CAN COMPLETE THE FOLLOWING CONCURRENTLY DURING JUNIOR & SENIOR YEAR

- 3 FRESHMEN COMP II
- 3 US HIST FROM 1877
- 3 PSYCHOLOGY 1113
- 4 BIOLOGY 1114

SREB IET PROGRAM
FuelEd Program



Oklahoma Schools Advisory Council

Working Together for Quality Education



DAVID DAY

PRYOR HIGH SCHOOL

HEAD BOYS BASKETBALL COACH

COLLEGE & CAREER COORDINATOR

PO BOX 548

PRYOR, OK 74362

(918) 825-2340 x3973 (HS)

(405) 328-1194 (CELL)

dayd@pryorschools.org